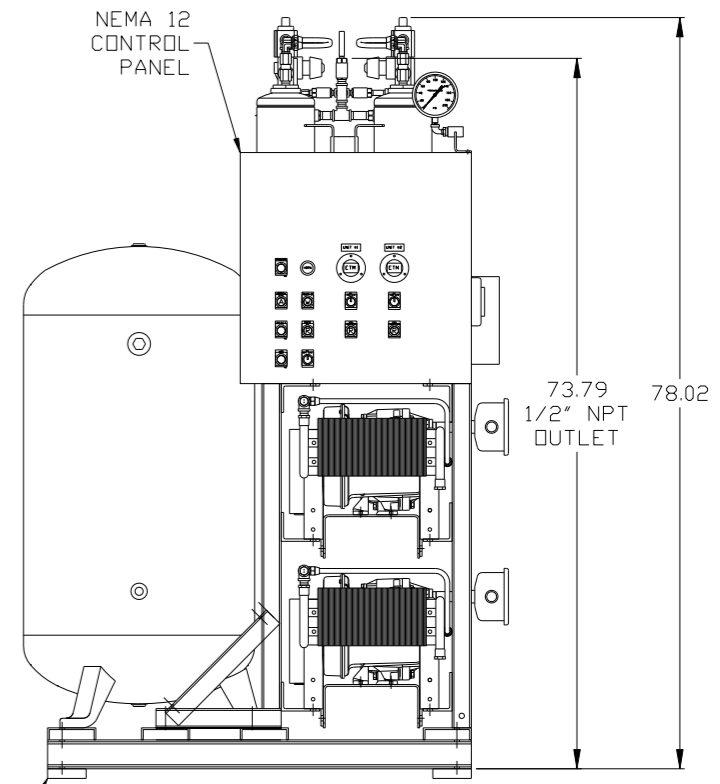
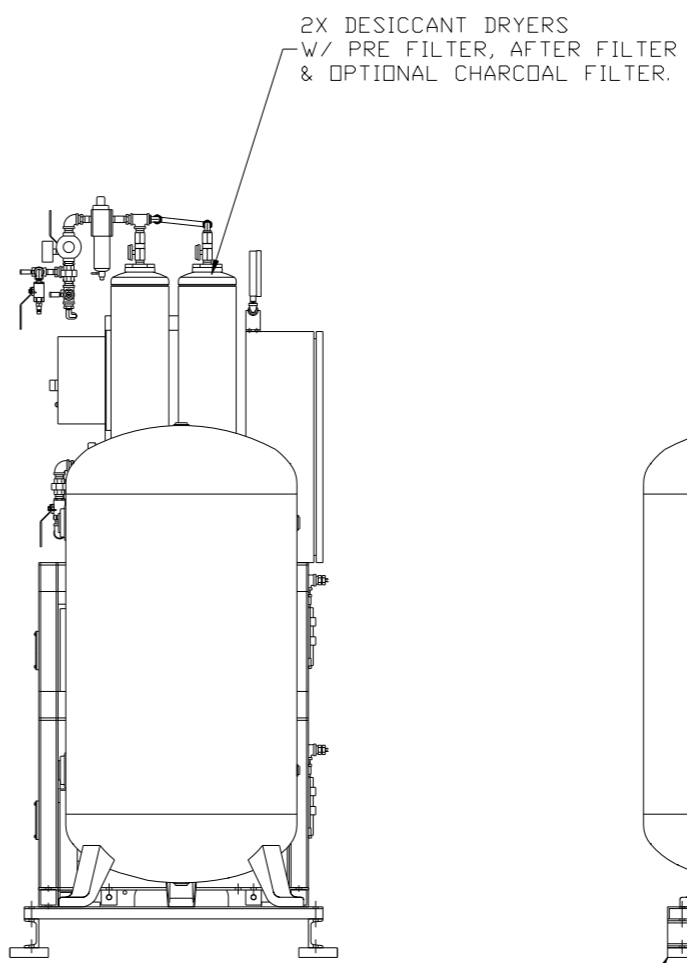
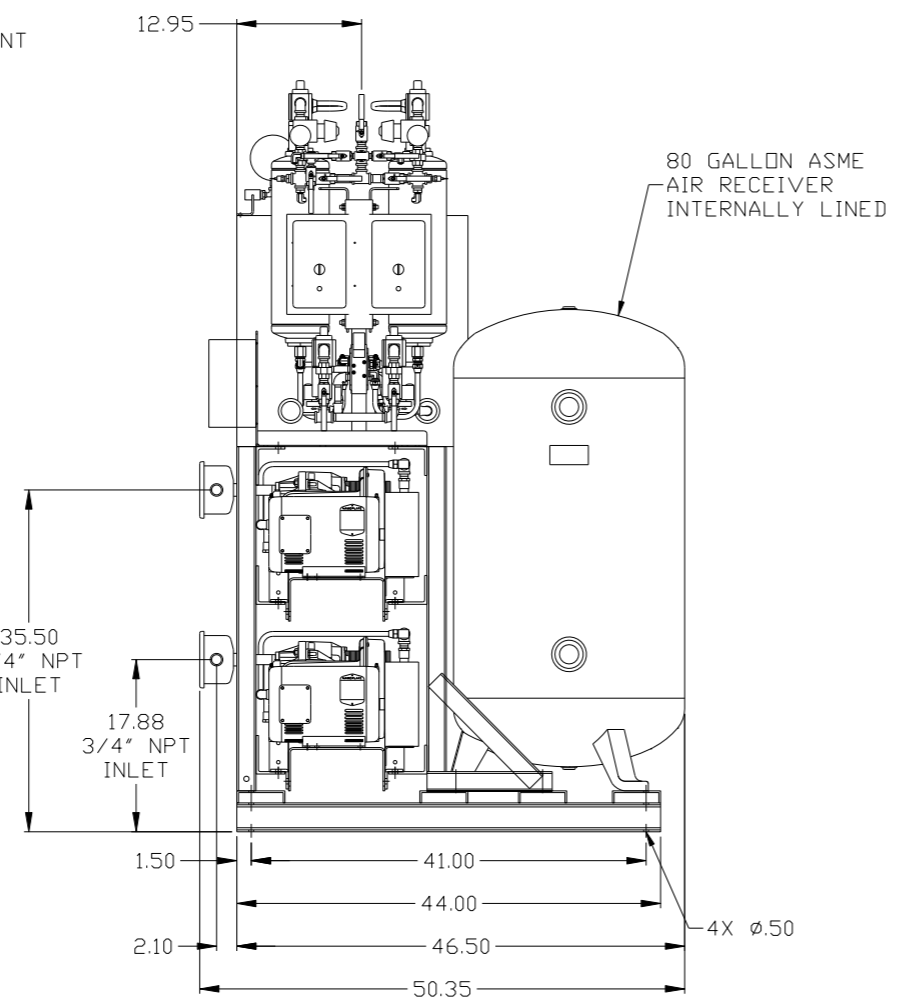
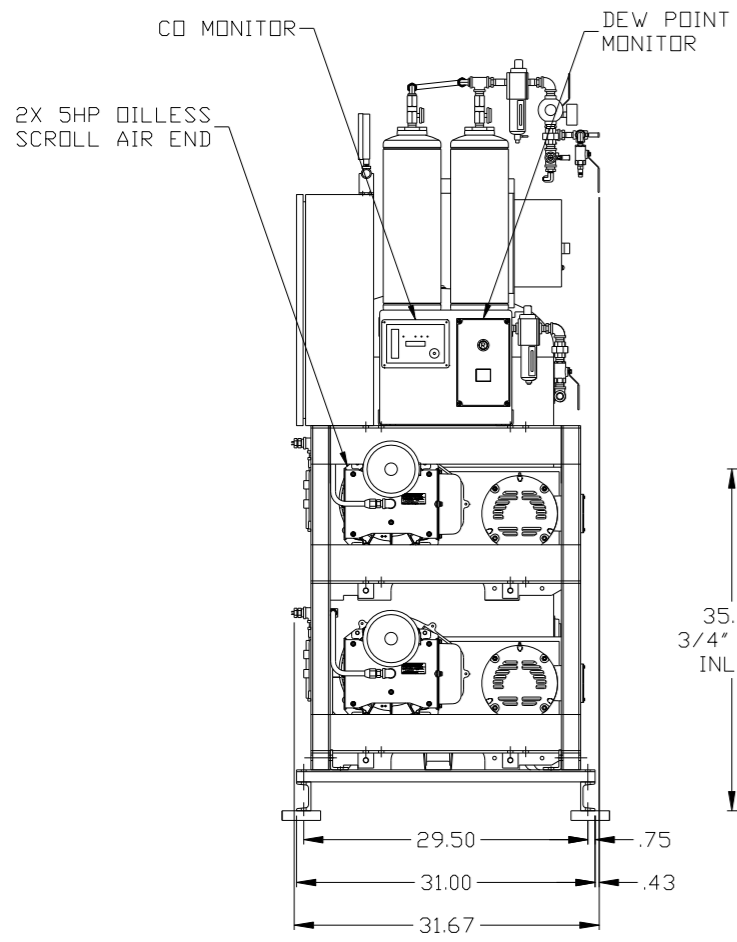
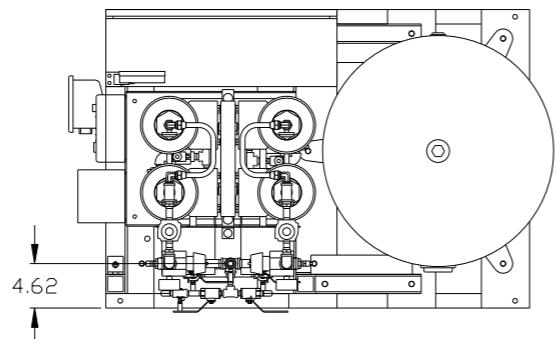


8 7 6 5 4 3 2 1

REV	ZONE	REVISION	DATE	ECN	NAME	CHKD
B-1	ALL	RELEASE TO PRODUCTION	7/07/06	21555	RSN	DMS
C-1	C-4	ADDED MANUAL DRAIN	05/15/07	21669	DMS	GES
C-2	C3,C4	REPLACED DIVERTER VALVES, ADDED 75 PSI SRV	12/19/07	21669	DMS	GES
D-1	D4	ADDED ISO VALVE, HANG TAG, TANK GAUGE	04/06/08	21907	DMS	GES
D-2	ALL	UPDATED LAYOUT & FLOW TO CURRENT STANDARDS	9/9/08	21907	AEK	GES
E-1	1 ALL	RELOCATED MONITORS AND UPDATED FRAME	4/20/09	22127	AEK	GES
E-2	ALL	UPDATED TO POWEX DEW POINT MONITOR	8/20/09	22127	AEK	DMS
F-1	ALL	UPDATED TO POWEX DRYER	11/10/09	22120	AEK	GES
G-1	1 ALL	ADDED SYSTEM OUTLET INFORMATION ADDED SHEET 3	2/24/10	22348	AEK	GES
H-1	ALL	UPDATED TO NEW COST SAVING DESIGN	4/7/10	22402	AEK	GES
J-1	1 ALL	ADDED DRYER CONTROLS	5/2/10	22348	AEK	GES
J-2	2 C7	CORRECTED INLET PLUMBING	6/4/10	22348	AEK	GES
J-3	1 ALL	UPDATED DRYER & MONITOR MOUNTING PER PRODUCTION	8/12/10	22348	AEK	GES
J-4	1 ALL	UPDATED TO DRYER/MONITOR MOUNTING PLATE	11/10/10	22348	AEK	GES
K-1	ALL	ADDED PBM SHEETS	10/10/11	22609	AEK	GES
K-2	1 ALL	UPDATED PBM PANEL MOUNTING	12/15/11	22609	AEK	GES
L-1	ALL	REMOVED EXTERNAL DISCONNECT FROM STANDARD PANEL FACE	7/12/12	22752	AEK	GES
M-1	ALL	CORRECTED FLEX LINES ON FLOW SHEET	8/9/12	PXEC009	GES	DMS
N-1	2 C-4	MOVED PRESSURE SENSING LOCATION	7/28/15	PXEC007	AEK	GES
P-1	2 B5,C5	CHANGED FLEX LINES TO 3/4"	8/13/15	PXEC093	AEK	GES



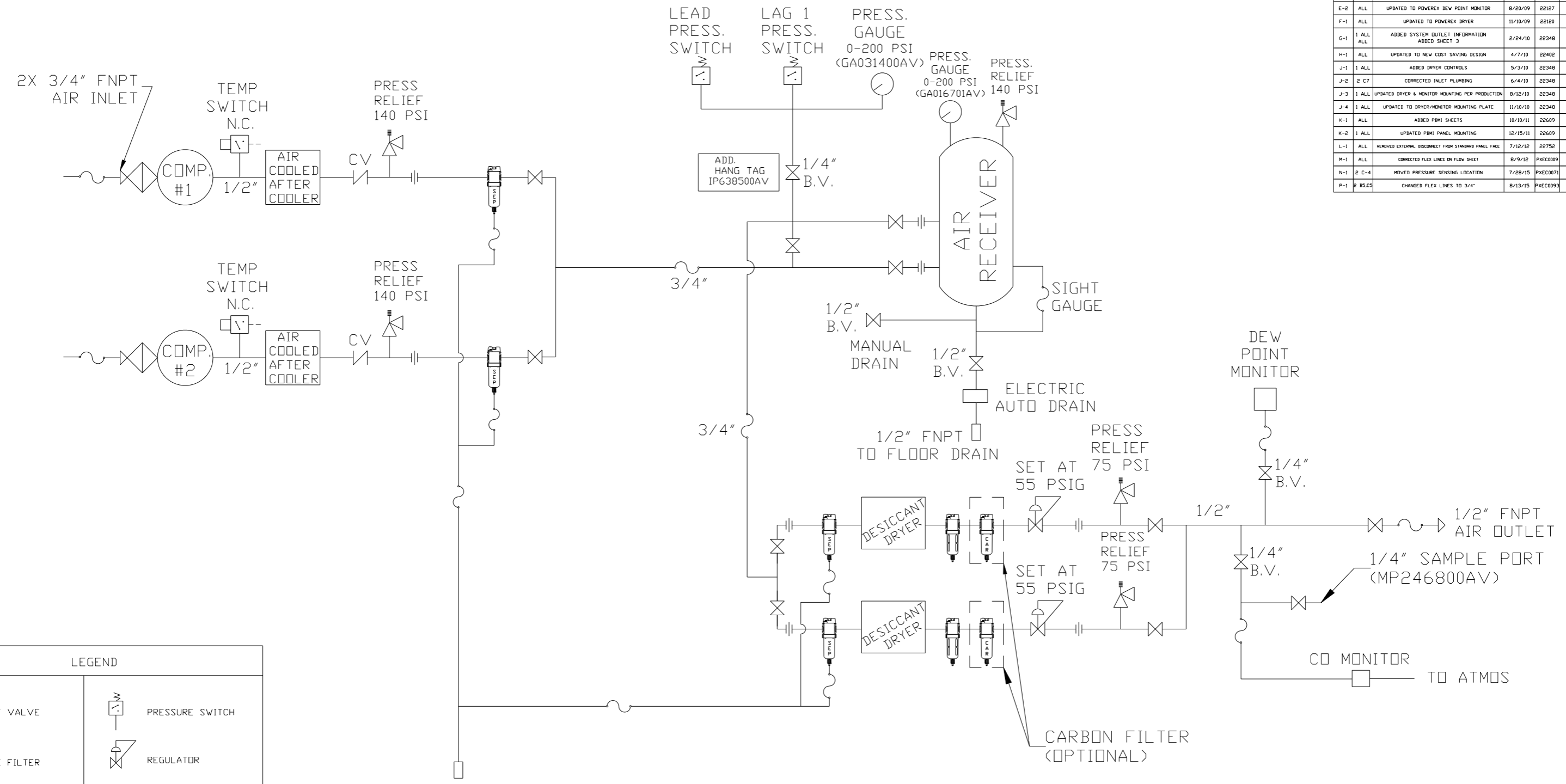
NOTE: A MINIMUM OF 24" CLEARANCE IS RECOMMENDED AROUND THE ENTIRE UNIT.

NOTE: SYSTEM DESIGNED IN COMPLIANCE WITH US NFPA'99, LATEST EDITION.

<b>SYMBOL LEGEND</b> ⊖ = MINUS DRAFT    ⊕ = PLUS DRAFT ⊕ = ADDITIONAL CONTROL REQ'D ⊕ = BRINELL HARDNESS		Drawings to conform to the current revision of the following ANSI standards: Y14.3 Multi and sectional view dgs. Y14.5M Dimensioning and tolerancing	
TOLERANCES NOT SPECIFIED .XX ± .XXX ± <<DEG> ±		AUTOCAD REL2000 <b>INCH</b>	
<b>CONFIDENTIAL DISCLOSURE</b> This drawing is the property of POWEX, INC. of the SCOTT FELTZER COMPANY and subject to return on demand. Its contents are confidential and must not be copied or submitted to outside parties for use or examination.		<b>DO NOT SCALE DRAWING FOR DIMENSIONS</b> Sheet 1 of 3    SCALE 1:10	
DRAWN BY: RSN CHECKED BY: DMS APPROVED BY: DMS, JJ		06/02/06    7/07/06    7/07/06    7/07/06	
MATERIAL: N/A		<b>POWEREX</b> 150 PRODUCTION DRIVE, HARRISON, OHIO 45030 Ph: 888-769-7979 FAX: (513) 367-3125	
PART NAME: DUPLEX OILLESS SCROLL 5HP, 80GAL. BASEMOUNT DUPLEX DESICCANT		DWG NO: MSD0503    SIZE: D	

8 7 6 5 4 3 2 1

REV	ZONE	REVISION	DATE	ECN	NAME	CHKD
B-1	ALL	RELEASE TO PRODUCTION	08/15/06	21555	RSN	DMS
C-1	C-4	ADDED MANUAL DRAIN	05/15/07	21669	DMS	GES
C-2	C3,C4	REPLACED DIVERTER VALVES, ADDED 75 PSI DRV	12/19/07	21669	DMS	GES
D-1	D4	ADDED ISO VALVE, HANG TAG, TANK GAUGE	04/06/08	21907	DMS	GES
D-2	ALL	UPDATED LAYOUT & FLOW TO CURRENT STANDARDS	9/9/08	21907	AEK	GES
E-1	1 ALL	RELOCATED MONITORS AND UPDATED FRAME	4/20/09	22127	AEK	GES
E-2	ALL	UPDATED TO POWEXX BEW POINT MONITOR	8/20/09	22127	AEK	DMS
F-1	ALL	UPDATED TO POWEXX DRYER	11/10/09	22120	AEK	GES
G-1	1 ALL	ADDED SYSTEM OUTLET INFORMATION ADDED SHEET 3	2/24/10	22348	AEK	GES
H-1	ALL	UPDATED TO NEW COST SAVING DESIGN	4/7/10	22402	AEK	GES
J-1	1 ALL	ADDED DRYER CONTROLS	5/3/10	22348	AEK	GES
J-2	2 C7	CORRECTED INLET PLUMBING	6/4/10	22348	AEK	GES
J-3	1 ALL	UPDATED DRYER & MONITOR MOUNTING PER PRODUCTION	8/12/10	22348	AEK	GES
J-4	1 ALL	UPDATED TO DRYER/MONITOR MOUNTING PLATE	11/10/10	22348	AEK	GES
K-1	ALL	ADDED PBM SHEETS	10/10/11	22609	AEK	GES
K-2	1 ALL	UPDATED PBM PANEL MOUNTING	12/15/11	22609	AEK	GES
L-1	ALL	REMOVED EXTERNAL DISCONNECT FROM STANDARD PANEL FACE	7/12/12	22752	AEK	GES
M-1	ALL	CORRECTED FLEX LINES IN FLOW SHEET	8/9/12	PXEC009	GES	DMS
N-1	2 C-4	MOVED PRESSURE SENSING LOCATION	7/28/15	PXEC007	AEK	GES
P-1	2 B5,C5	CHANGED FLEX LINES TO 3/4"	8/13/15	PXEC009	AEK	GES



LEGEND	
	RELIEF VALVE
	INTAKE FILTER
	AIR FILTER
	3 WAY VALVE
	CARBON FILTER
	BALL VALVE
	PRESSURE SWITCH
	REGULATOR
	SEPARATOR
	CHECK VALVE
	FLEX LINE
	HIGH TEMP SWITCH
	UNION

- NOTES:
- 1) IF LAG 1 COMPRESSOR IS ENERGIZED ALARM WILL OCCUR.
  - 2) PIPING TO THE INLET BY OTHERS AND TO BE PER NFPA99 4-3.1.1.9(b)
  - 3) INSTRUMENTS DOWN STREAM OF SOURCE VALVE TO BE SUPPLIED BY OTHERS.
  - 4) THIS DRAWING COVERS PART#'S -25, -35, AND -45.

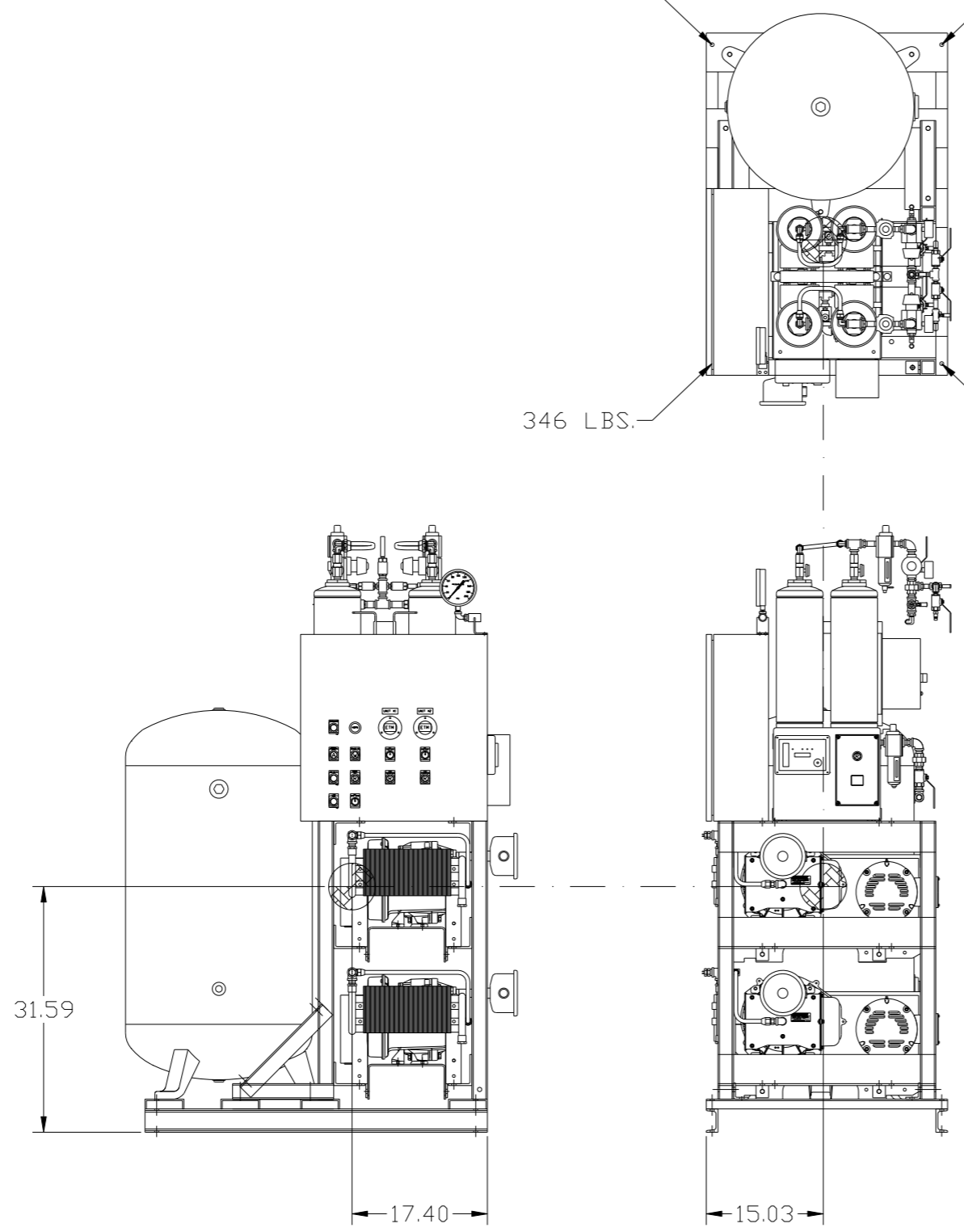
SYMBOL LEGEND		= ADDITIONAL CONTROL REQ'D		Drawings to conform to the current revision of the following ANSI standards:	
= MINUS DRAFT		= BRINELL HARDNESS		Y14.3 Multi and sectional view dgs.	
= PLUS DRAFT				Y14.5M Dimensioning and tolerancing	
TOLERANCES NOT SPECIFIED		AUTOCAD REL2000:		DO NOT SCALE DRAWING FOR DIMENSIONS	
.XX ±		INCH		Sheet 2 of 3	
.XXX ±				SCALE 1:8	
<math>\angle</math>(DEG) ±					
CONFIDENTIAL DISCLOSURE					
This drawing is the property of POWEXX, INC. OF THE SCOTT FETZER COMPANY and subject to return on demand. Its contents are confidential and must not be copied or submitted to outside parties for use or examination.					
DRAWN BY		CHECKED BY		APPROVED BY	
RSN		DMS		DMS JJ	
06/02/06		7/07/06		7/07/06 7/07/06	
MATERIAL N/A					
PART NAME					
5HP. MED. PACKAGE FLOW SCHEMATIC					
DWG NO				SIZE	
MSD0503				D	

8 7 6 5 4 3 2 1

REV	ZONE	REVISION	DATE	ECN	NAME	CHKD
G-1	1 ALL	ADDED SYSTEM OUTLET INFORMATION ADDED SHEET 3	2/24/10	22348	AEK	GES
H-1	ALL	UPDATED TO NEW COST SAVING DESIGN	4/7/10	22402	AEK	GES
J-1	1 ALL	ADDED DRYER CONTROLS	5/3/10	22348	AEK	GES
J-2	2 C7	CORRECTED INLET PLUMBING	6/4/10	22348	AEK	GES
J-3	1 ALL	UPDATED DRYER & MONITOR MOUNTING PER PRODUCTION	8/12/10	22348	AEK	GES
J-4	1 ALL	UPDATED TO DRYER/MONITOR MOUNTING PLATE	11/10/10	22348	AEK	GES
K-1	ALL	ADDED PBM SHEETS	10/10/11	22609	AEK	GES
K-2	1 ALL	UPDATED PBM PANEL MOUNTING	12/15/11	22609	AEK	GES
L-1	ALL	REMOVED EXTERNAL DISCONNECT FROM STANDARD PANEL FACE	7/12/12	22752	AEK	GES
M-1	ALL	CORRECTED FLEX LINES ON FLOW SHEET	8/9/12	PXEC009	GES	DMS
N-1	2 C-4	MOVED PRESSURE SENSING LOCATION	7/28/15	PXEC007	AEK	GES
P-1	2 BS,C5	CHANGED FLEX LINES TO 3/4"	8/13/15	PXEC009	AEK	GES

226 LBS. 213 LBS.

346 LBS. 326 LBS.



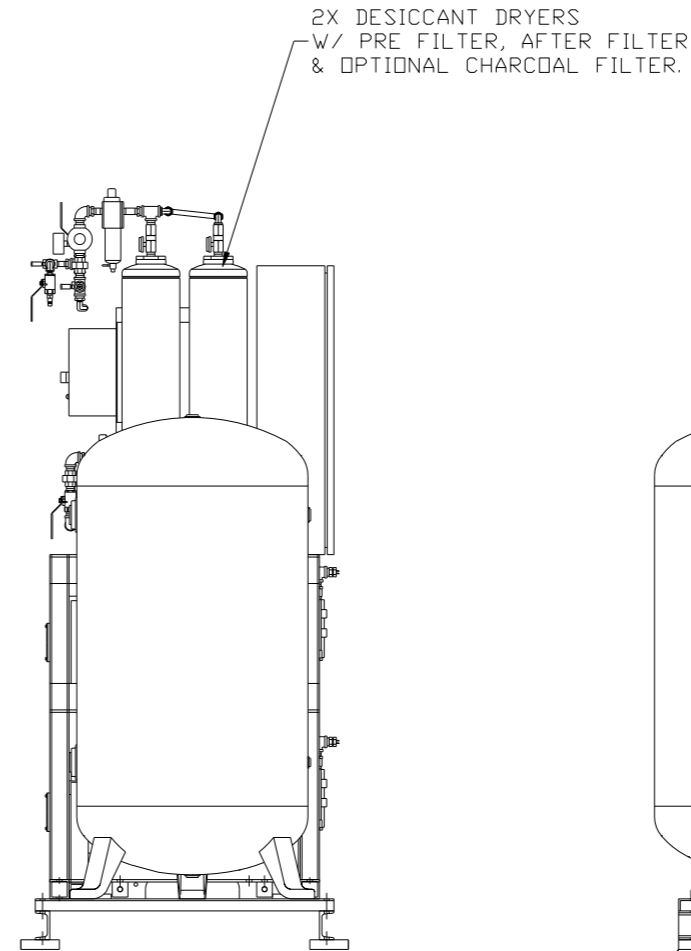
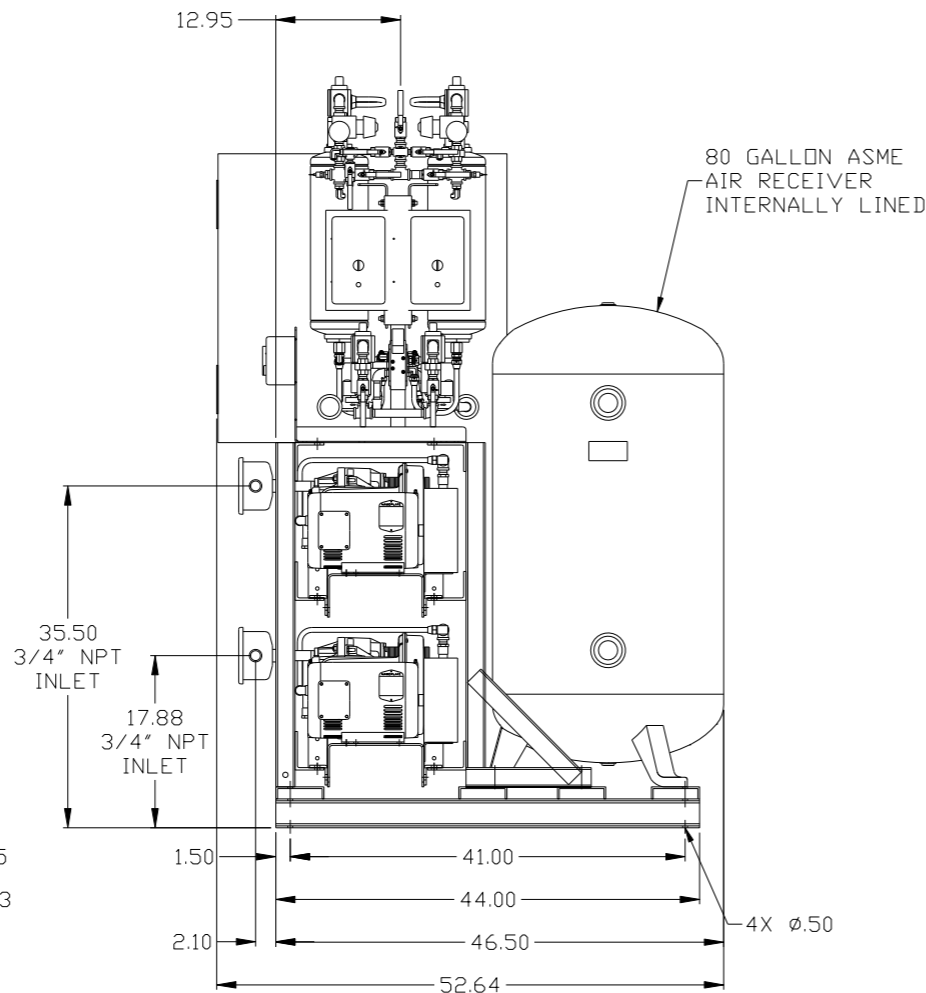
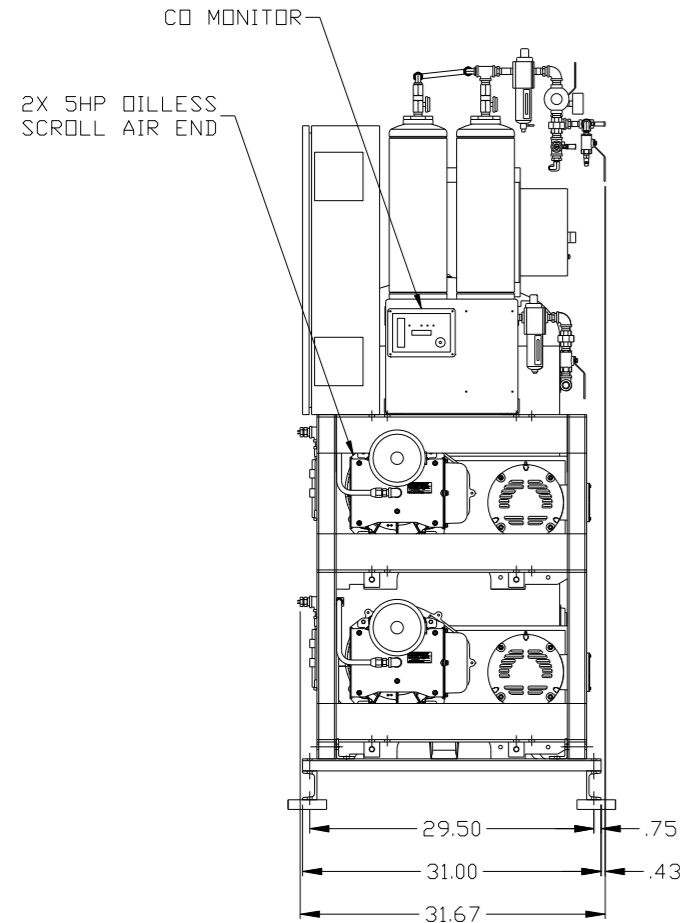
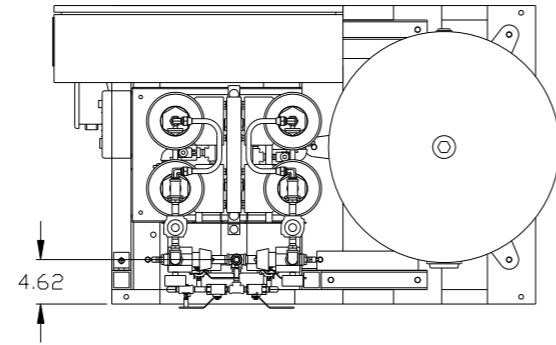
CENTER OF GRAVITY

C.O.G:  
 TOTAL WT - 1111 LBS.  
 X(FRONT) - -17.40  
 Y(RIGHT) - 15.03  
 Z(HEIGHT) - 31.59

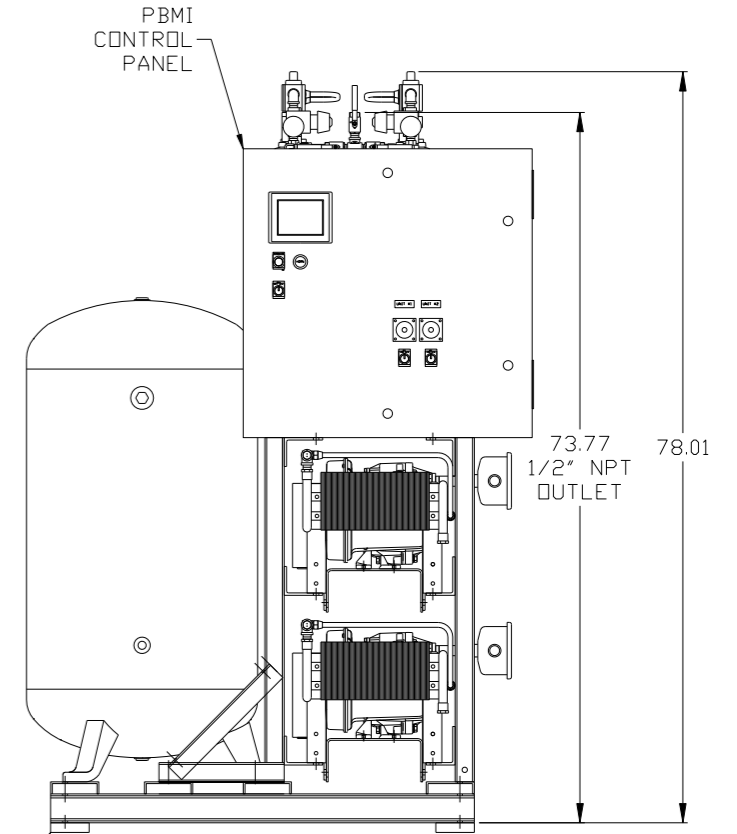
<b>SYMBOL LEGEND</b> ⊖ = MINUS DRAFT ⊕ = PLUS DRAFT HRC = BRINELL HARDNESS ⊕ = ADDITIONAL CONTROL REQ'D HRC = BRINELL HARDNESS		Drawings to conform to the current revision of the following ANSI standards: Y14.3 Multi and sectional view dgs. Y14.5M Dimensioning and tolerancing	
TOLERANCES NOT SPECIFIED .XX ± .XXX ± <math>\angle</math>(DEG.) ±		DO NOT SCALE DRAWING FOR DIMENSIONS SCALE 1:10	
CONFIDENTIAL DISCLOSURE This drawing is the property of POWEREX, INC. or the SCOTT FETZER COMPANY and subject to return on demand. Its contents are confidential and must not be copied or submitted to outside parties for use or examination.		AUTOCAD REL2008 LT Sheet 3 of 3	
MATERIAL N/A		DRAWN BY: AEK CHECKED BY: GES APPROVED BY: ENGINEERING MFG/MRKTG DMS JJ 2/24/10 2/24/10 2/24/10 2/24/10	
PART NAME DUPLEX BILLESS SCROLL 5HP, 80GAL. BASEMOUNT DUPLEX DESICCANT		DWG NO: MSD0503 SIZE: D	

8 7 6 5 4 3 2 1

REV	ZONE	REVISION	DATE	ECN	NAME	CHKD
K-1	ALL	ADDED PBMI SHEETS	10/10/11	22609	AEK	GES
K-2	1 ALL	UPDATED PBMI PANEL MOUNTING	12/15/11	22609	AEK	GES
L-1	ALL	REMOVED EXTERNAL DISCONNECT FROM STANDARD PANEL FACE	7/12/12	22752	AEK	DMS
M-1	ALL	CORRECTED FLEX LINES ON FLOW SHEET	8/9/12	PXEC009	GES	DMS
N-1	2 C-4	MOVED PRESSURE SENSING LOCATION	7/28/15	PXEC007	AEK	GES
P-1	2 B5.C5	CHANGED FLEX LINES TO 3/4"	8/13/15	PXEC009	AEK	GES



ISOLATION PADS  
4" X 4" X 1"(QTY.4)

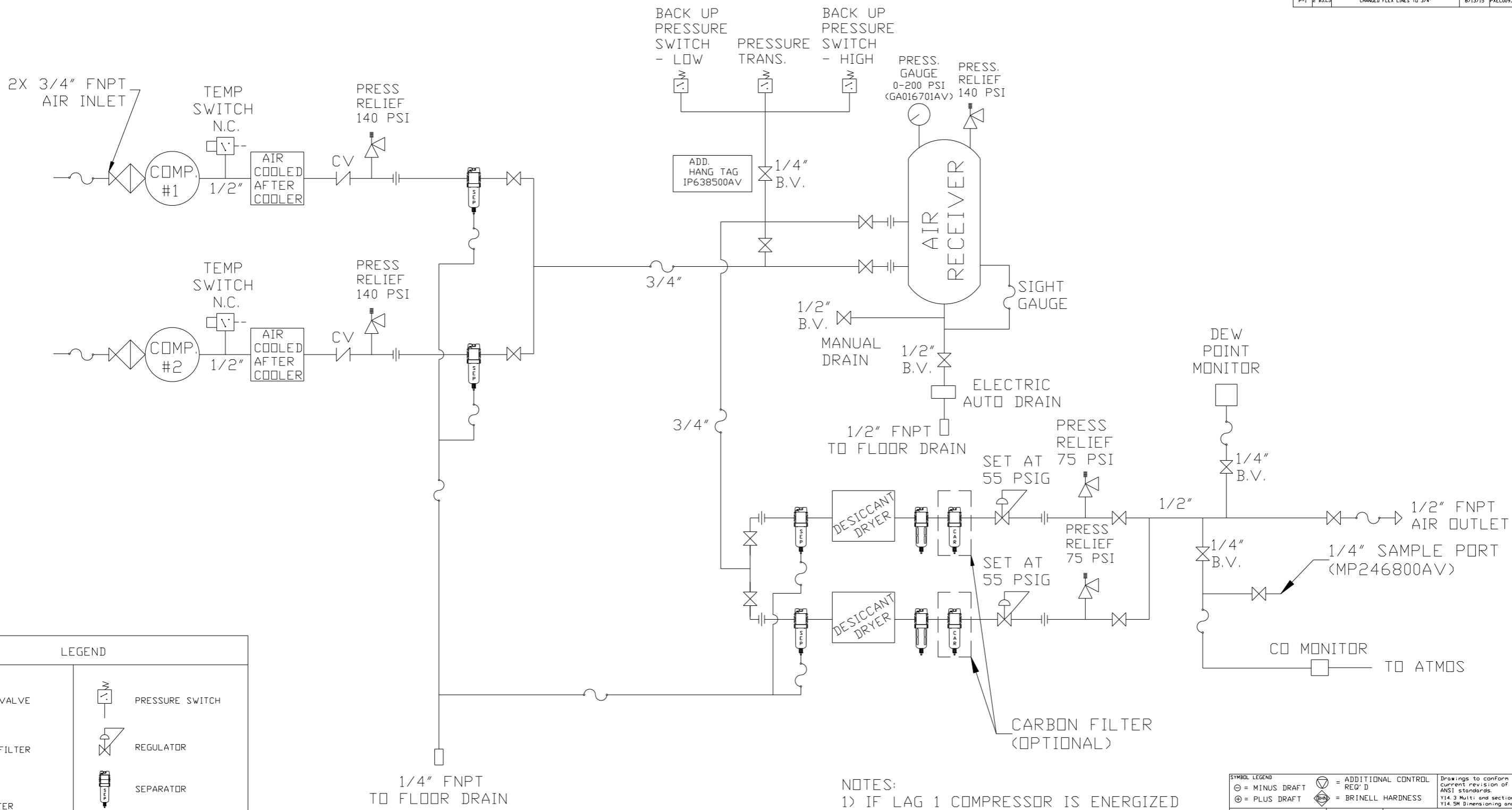


NOTE: A MINIMUM OF 24" CLEARANCE IS RECOMMENDED AROUND THE ENTIRE UNIT.

NOTE: SYSTEM DESIGNED IN COMPLIANCE WITH US NFPA'99, LATEST EDITION.

SYMBOL LEGEND		= ADDITIONAL CONTROL REQ'D		Drawings to conform to the current revision of the following ANSI standards:	
⊖	MINUS DRAFT	⊕	PLUS DRAFT	⊖	ANSI Y14.3 Multi and sectional view dgs.
⊕	PLUS DRAFT	⊖	MINUS DRAFT	⊖	ANSI Y14.5M Dimensioning and tolerancing
⊕	PLUS DRAFT	⊖	MINUS DRAFT	⊖	ANSI Y14.3 Multi and sectional view dgs.
⊕	PLUS DRAFT	⊖	MINUS DRAFT	⊖	ANSI Y14.5M Dimensioning and tolerancing
TOLERANCES NOT SPECIFIED		AUTOCAD REL2008 LT		DO NOT SCALE DRAWING FOR DIMENSIONS	
.XX ±		INCH		Sheet 1 of 3	
.XXX ±				SCALE 1:10	
<<DEG> ±					
CONFIDENTIAL DISCLOSURE					
This drawing is the property of POWEREX, INC. of the SCOTT FELTZER COMPANY and subject to return on demand. Its contents are confidential and must not be copied or submitted to outside parties for use or examination.					
DRAWN BY		CHECKED BY		APPROVED BY	
AEK		GES		DMS RJR	
10/10/11		10/10/11		10/10/11	
MATERIAL N/A					
PART NAME					
2X 5HP OILLESS SCROLL AIR END, 80GAL. BASEMOUNT DUPLEX DESICCANT					
DWG NO MSD0503				SIZE D	

REV	ZONE	REVISION	DATE	ECN	NAME	CHKD
K-1	ALL	ADDED PBM1 SHEETS	10/10/11	22609	AEK	GES
K-2	1 ALL	UPDATED PBM1 PANEL MOUNTING	12/15/11	22609	AEK	GES
L-1	ALL	REMOVED EXTERNAL DISCONNECT FROM STANDARD PANEL FACE	7/12/12	22752	AEK	DMS
M-1	ALL	CORRECTED FLEX LINES ON FLOW SHEET	8/9/12	PXEC009	GES	GES
N-1	2 C-4	MOVED PRESSURE SENSING LOCATION	7/28/15	PXEC007	AEK	GES
P-1	2 B5,C5	CHANGED FLEX LINES TO 3/4"	8/13/15	PXEC009	AEK	GES



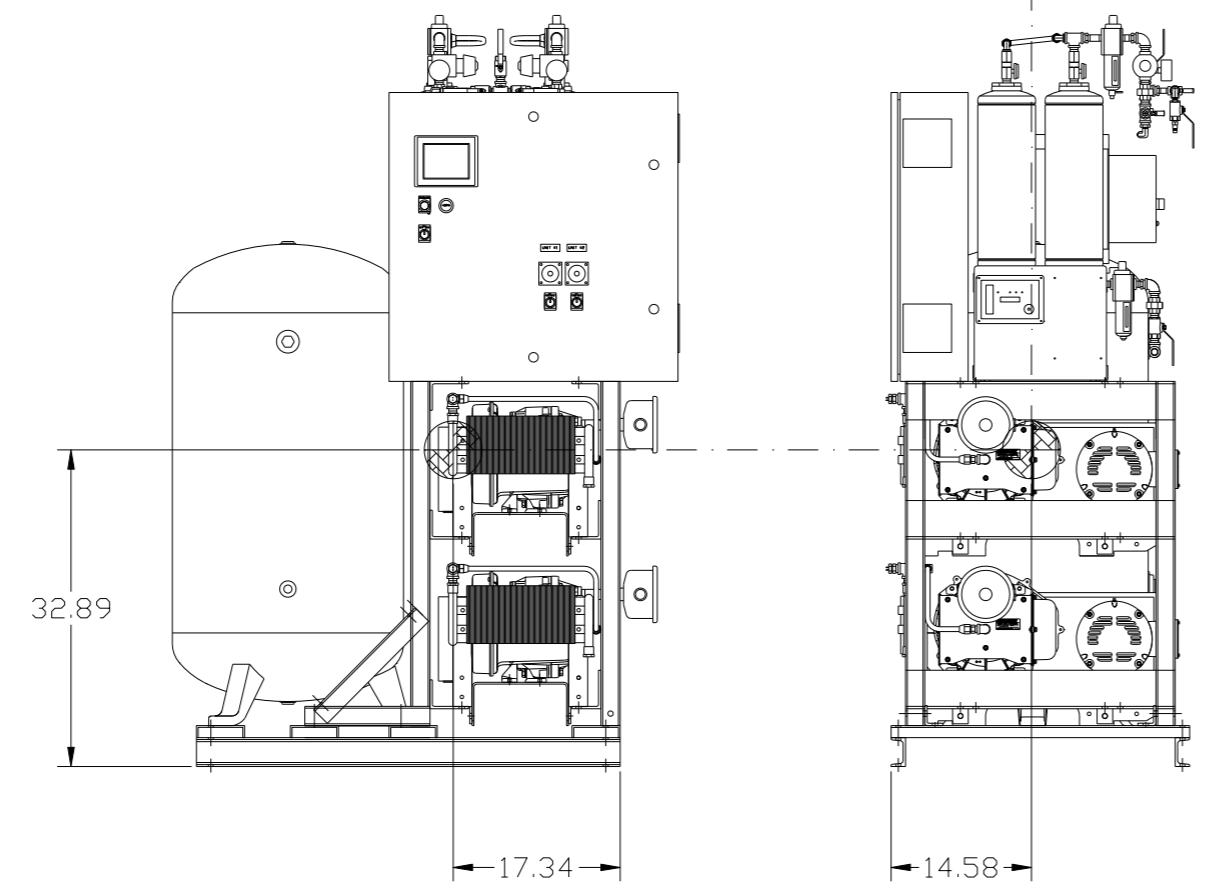
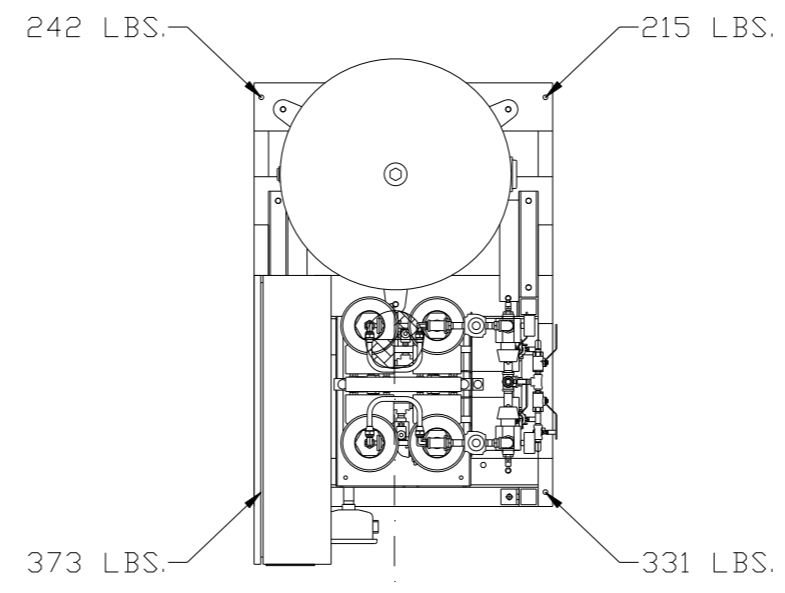
LEGEND	
	RELIEF VALVE
	INTAKE FILTER
	AIR FILTER
	3 WAY VALVE
	CARBON FILTER
	BALL VALVE
	PRESSURE SWITCH
	REGULATOR
	SEPARATOR
	CHECK VALVE
	FLEX LINE
	HIGH TEMP SWITCH
	UNION

- NOTES:
- 1) IF LAG 1 COMPRESSOR IS ENERGIZED ALARM WILL OCCUR.
  - 2) PIPING TO THE INLET BY OTHERS AND TO BE PER NFPA99 4-3.1.1.9(b)
  - 3) INSTRUMENTS DOWN STREAM OF SOURCE VALVE TO BE SUPPLIED BY OTHERS.
  - 4) THIS DRAWING COVERS PART#'S -25, -35, AND -45.

SYMBOL LEGEND			ADDITIONAL CONTROL REQ'D	Drawings to conform to the current revision of the following ANSI standards: Y14.3 Multi and sectional view dgs. Y14.5M Dimensioning and tolerancing
	MINUS DRAFT		BRINELL HARDNESS	
TOLERANCES NOT SPECIFIED		AUTOCAD REL2008 LT	DO NOT SCALE DRAWING FOR DIMENSIONS	
.XX ±	.XXX ±	< < DEG > ±	INCH	SCALE 1:10
CONFIDENTIAL DISCLOSURE This drawing is the property of POWEREX, INC. OF THE SCOTT FETZER COMPANY and subject to return on demand. Its contents are confidential and must not be copied or submitted to outside parties for use or examination.		DRAWN BY AEK	CHECKED BY GES	APPROVED BY ENGINEERING MFG/MKTG DMS RJR
MATERIAL N/A		10/10/11	10/10/11	10/10/11
PART NAME 5HP. MED. PACKAGE FLOW SCHEMATIC		DWG NO MSD0503		SIZE D

8 7 6 5 4 3 2 1

REV	ZONE	REVISION	DATE	ECN	NAME	CHKD
K-1	ALL	ADDED PBM1 SHEETS	10/10/11	22609	AEK	GES
K-2	1 ALL	UPDATED PBM1 PANEL MOUNTING	12/15/11	22609	AEK	GES
L-1	ALL	REMOVED EXTERNAL DISCONNECT FROM STANDARD PANEL FACE	7/12/12	22752	AEK	DMS
M-1	ALL	CORRECTED FLEX LINES ON FLOW SHEET	8/9/12	PXEC009	GES	GES
N-1	2 C-4	MOVED PRESSURE SENSING LOCATION	7/28/15	PXEC007	AEK	GES
P-1	2 B5.C5	CHANGED FLEX LINES TO 3/4"	8/13/15	PXEC009	AEK	GES



 CENTER OF GRAVITY

C.O.G:  
 TOTAL WT - 1161 LBS.  
 X(FRONT) - -17.34  
 Y(RIGHT) - 14.58  
 Z(HEIGHT) - 32.89

<b>SYMBOL LEGEND</b> ⊖ = MINUS DRAFT ⊕ = PLUS DRAFT .XX ± .XXX ± <math>\angle</math>(DEG.) ±		= ADDITIONAL CONTROL REQ'D = BRINELL HARDNESS		Drawings to conform to the current revision of the following ANSI standards: Y14.3 Multi and sectional view dgs. Y14.5M Dimensioning and tolerancing	
TOLERANCES NOT SPECIFIED .XX ± .XXX ± <math>\angle</math>(DEG.) ±		AUTOCAD REL2008 LT INCH		DO NOT SCALE DRAWING FOR DIMENSIONS Sheet 3 of 3 SCALE 1:10	
CONFIDENTIAL DISCLOSURE This drawing is the property of POWEREX, INC. or the SCOTT FETZER COMPANY and subject to return on demand. Its contents are confidential and must not be copied or submitted to outside parties for use or examination.					
DRAWN BY AEK		CHECKED BY GES		APPROVED BY ENGINEERING MFG/MKTG DMS RJR	
MATERIAL N/A		DATE 10/10/11		DATE 10/10/11	
PART NAME DUPLEX DILLESS SCROLL SHP. 80GAL. BASEMOUNT DUPLEX DESICCANT		DWG NO MSD0503		SIZE D	

8 7 6 5 4 3 2 1