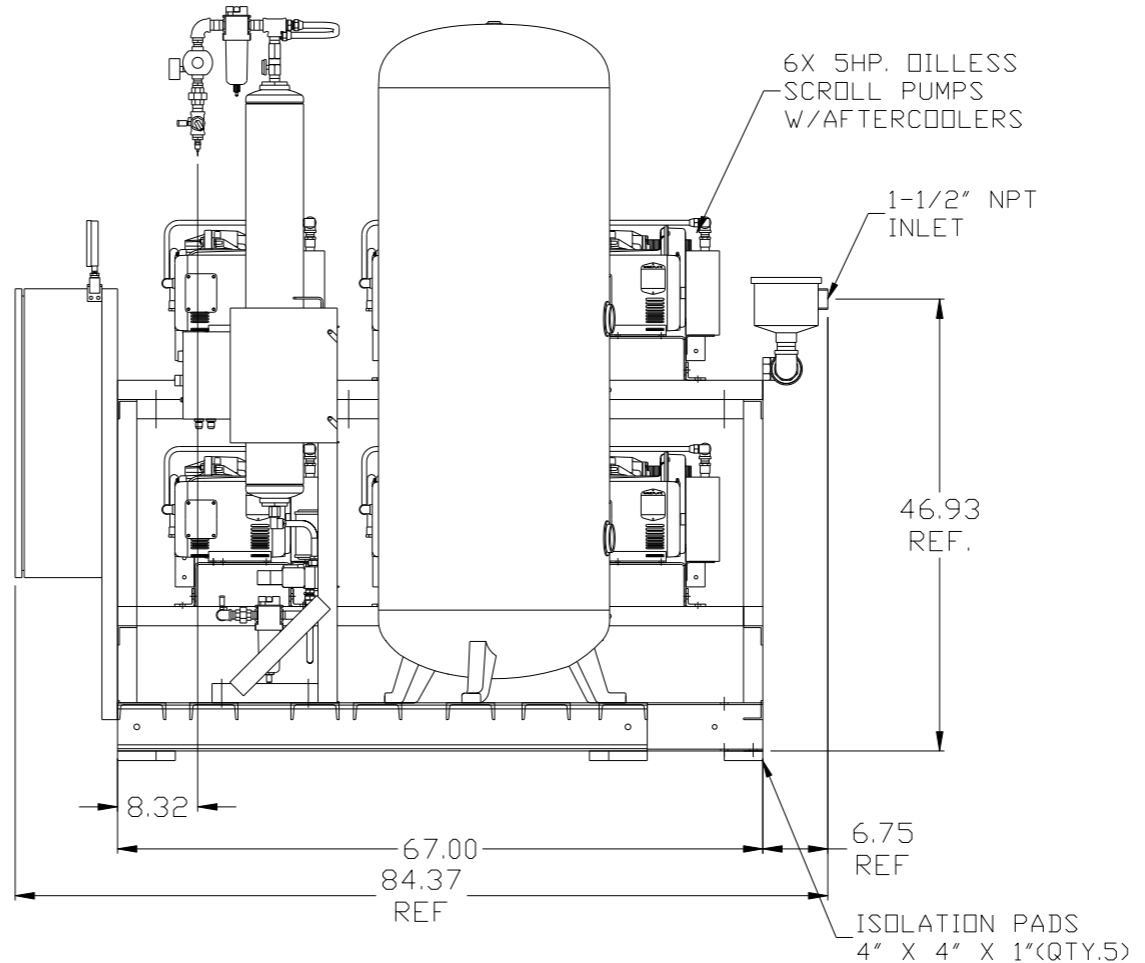
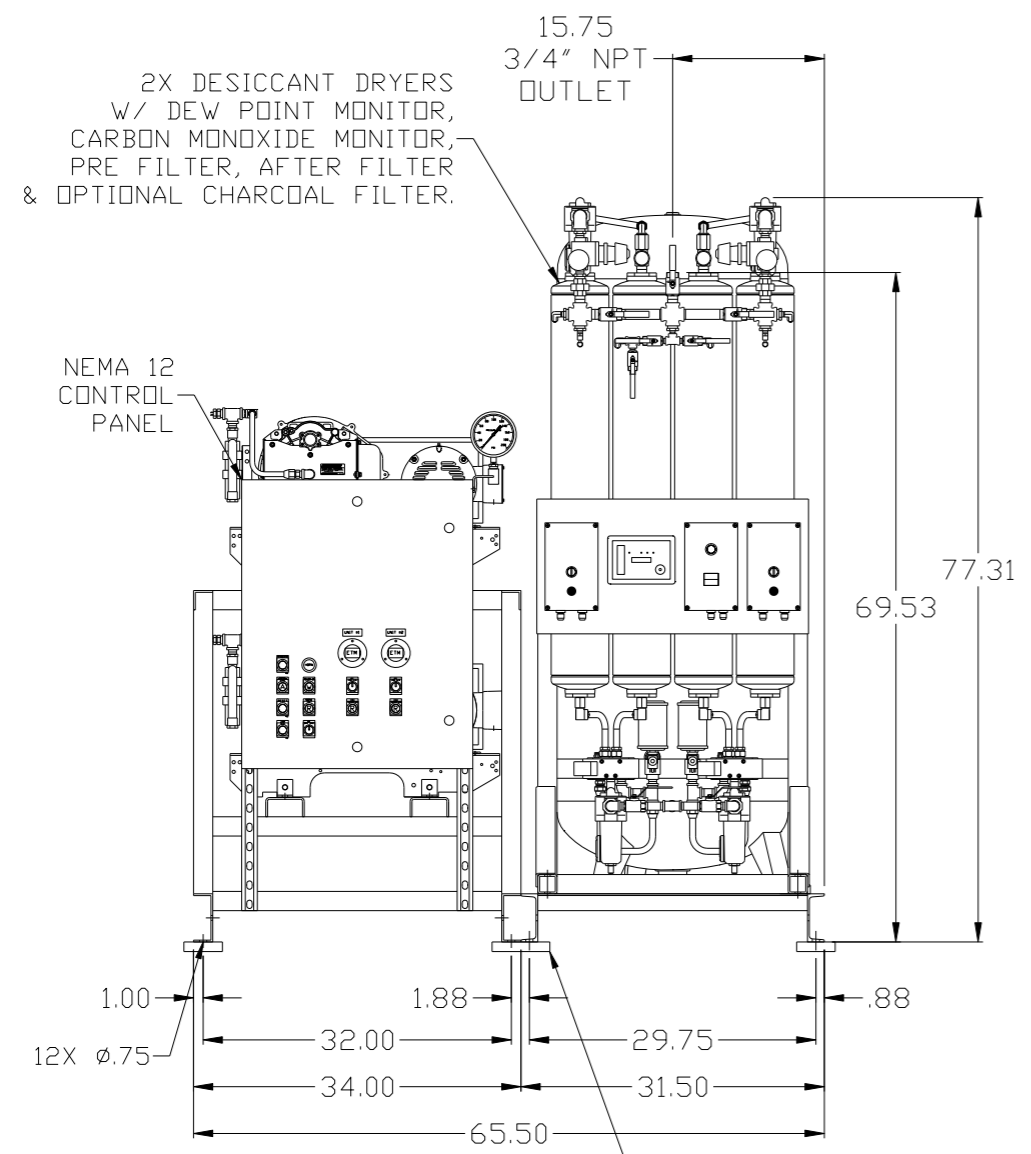
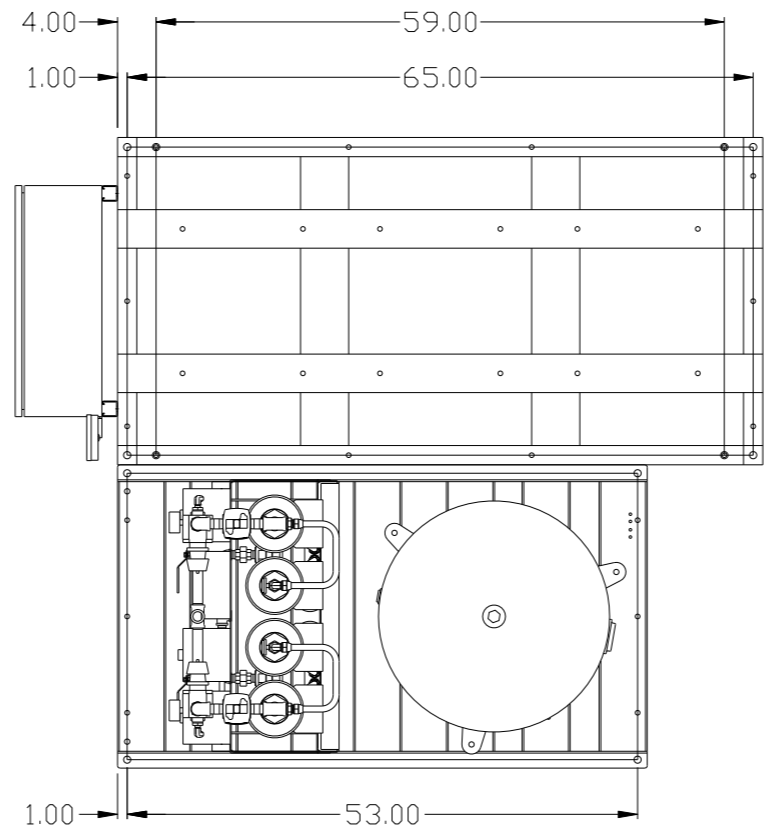


REV	ZONE	REVISION	DATE	ECN	NAME	CHKD
B-1	ALL	RELEASE TO PRODUCTION	07/19/06	21437	RSN	DMS
C-1	C-4	ADDED MANUAL DRAIN	04/11/07	21669	DMS	DMS
D-1	ALL	UPDATED LAYOUT AND FLOW TO CURRENT STANDARDS	9/5/08	21907	AEK	DMS
E-1	2 ALL	CORRECTED SCROLL UNIT NUMBERING	1/14/09	22127	AEK	DMS
E-2	2 ALL	UPDATED FLOW TO CURRENT PRODUCTION	8/18/09	22127	AEK	DMS
F-1	ALL	UPDATED TO POWEX DRYER	8/19/09	22120	AEK	GES
G-1	2 ALL	UPDATED PIPE SIZES	10/22/09	22127	AEK	GES
G-2	ALL	ADDED SHEETS 3-5	11/12/09	22127	AEK	GES
H-1	1 ALL	ADDED SYSTEM OUTLET DIMENSIONS	3/1/10	22348	AEK	GES
J-1	ALL	UPDATED MULTI-SCROLL FRAMES	11/2/10	22405	AEK	GES
K-1	ALL	ADDED P&MI SHEETS	10/10/11	22609	AEK	GES
L-1	2 ALL	UPDATED/ADDED FLEX LINES	10/22/12	PXEC0009	AEK	DMS
M-1	2 C4	MOVED PRESSURE SENSING LOCATION	7/10/14	PXEC0071	AEK	GES

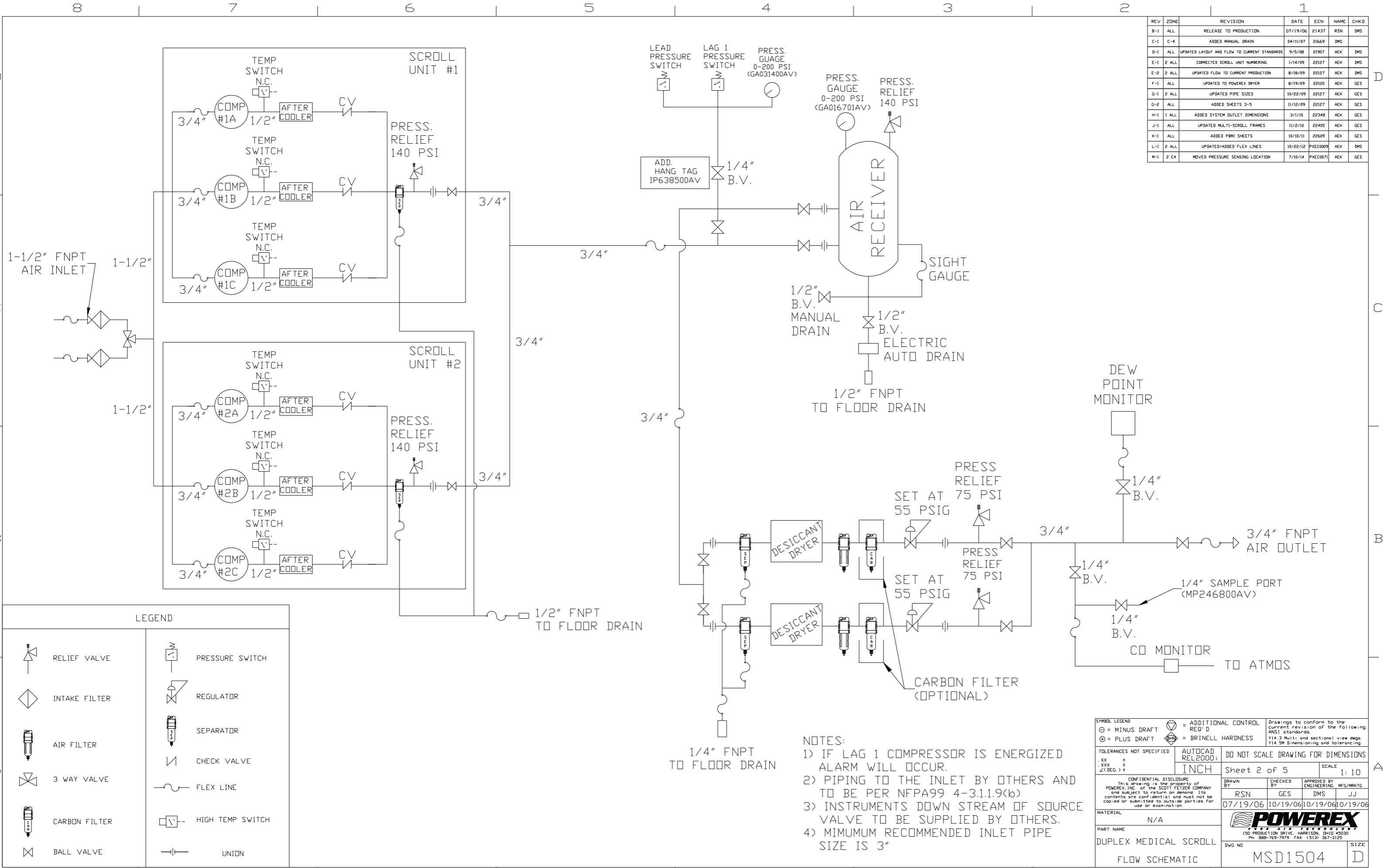


NOTE: A MINIMUM OF 24" CLEARANCE IS RECOMMENDED AROUND THE ENTIRE UNIT.

NOTE: SYSTEM DESIGNED IN COMPLIANCE WITH US NFPA'99, LATEST EDITION.

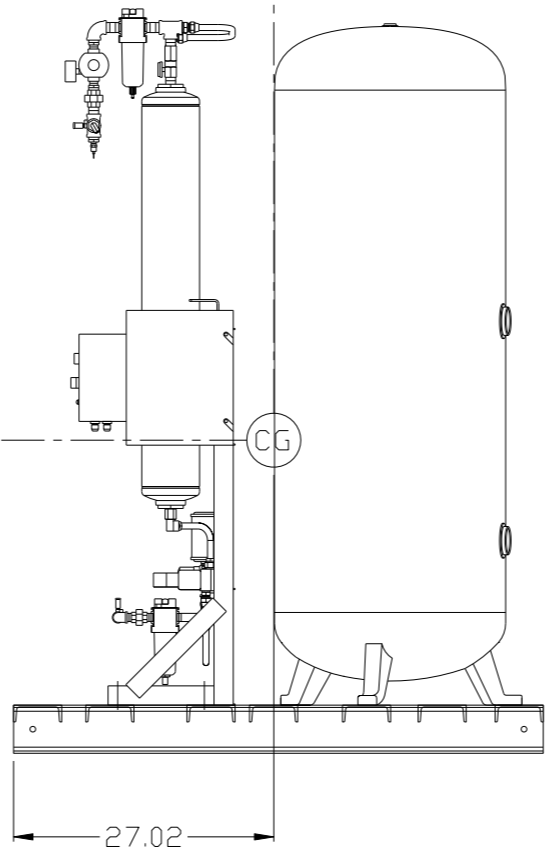
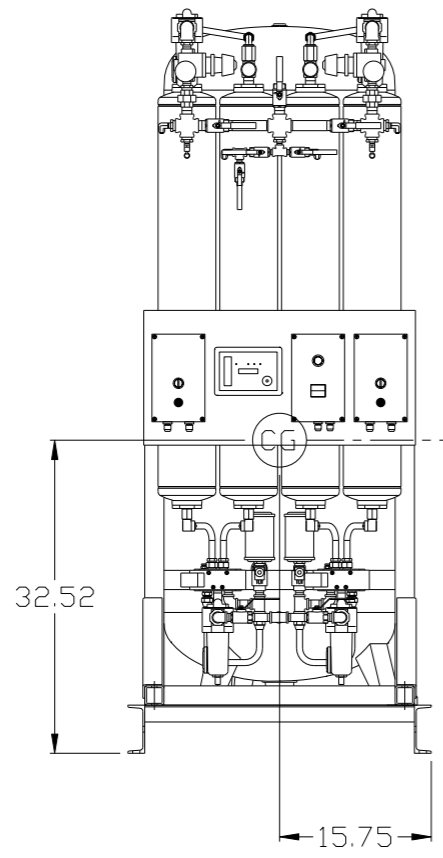
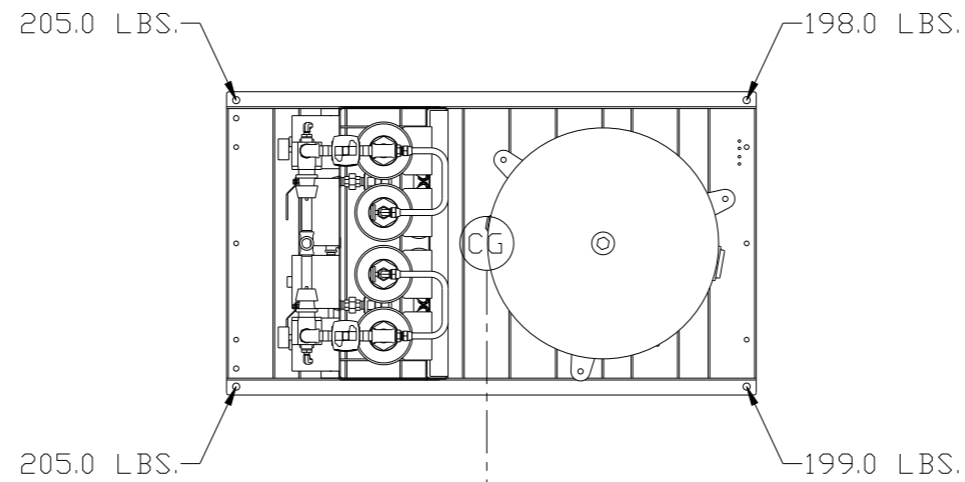
SYMBOL LEGEND ⊖ = MINUS DRAFT ⊕ = PLUS DRAFT ⊕ = ADDITIONAL CONTROL REQ'D ⊕ = BRINELL HARDNESS		Drawings to conform to the current revision of the following ANSI standards: Y14.3 Multi and sectional view dgs. Y14.5M Dimensioning and tolerancing	
TOLERANCES NOT SPECIFIED .XX ± .XXX ± \angle (DEG) ±		DO NOT SCALE DRAWING FOR DIMENSIONS AUTOCAD REL2000 INCH Sheet 1 of 5 SCALE 1:10	
CONFIDENTIAL DISCLOSURE This drawing is the property of POWEX, INC. of the SCOTT FETZER COMPANY and subject to return on demand. Its contents are confidential and must not be copied or submitted to outside parties for use or examination.		DRAWN BY: RSN CHECKED BY: GES APPROVED BY: ENGINEERING MFG/MKTG: DMS JJ 07/19/06 10/19/06 10/19/06 10/19/06	
MATERIAL: N/A		POWEREX 150 PRODUCTION DRIVE, HARRISON, OHIO 45030 Ph: 888-769-7979 Fax: (513) 367-3125	
PART NAME: DUPLEX OILLESS SCROLL 15HP. 120 GAL. BASEMOUNT		DWG NO: MSD1504 SIZE: D	

REV	ZONE	REVISION	DATE	ECN	NAME	CHKD
B-1	ALL	RELEASE TO PRODUCTION	07/19/06	21437	RSN	DMS
C-1	C-4	ADDED MANUAL DRAIN	04/11/07	21669	DMS	
D-1	ALL	UPDATED LAYOUT AND FLOW TO CURRENT STANDARDS	9/5/08	21907	AEK	DMS
E-1	2 ALL	CORRECTED SCROLL UNIT NUMBERING	1/14/09	22127	AEK	DMS
E-2	2 ALL	UPDATED FLOW TO CURRENT PRODUCTION	8/18/09	22127	AEK	DMS
F-1	ALL	UPDATED TO POWEX DRYER	8/19/09	22120	AEK	GES
G-1	2 ALL	UPDATED PIPE SIZES	10/22/09	22127	AEK	GES
G-2	ALL	ADDED SHEETS 3-5	11/12/09	22127	AEK	GES
H-1	1 ALL	ADDED SYSTEM OUTLET DIMENSIONS	3/1/10	22348	AEK	GES
J-1	ALL	UPDATED MULTI-SCROLL FRAMES	11/2/10	22405	AEK	GES
K-1	ALL	ADDED P&ID SHEETS	10/10/11	22609	AEK	GES
L-1	2 ALL	UPDATED/ADDED FLEX LINES	10/22/12	PXEC009	AEK	DMS
M-1	2 C4	MOVED PRESSURE SENSING LOCATION	7/10/14	PXEC007	AEK	GES



SYMBOL LEGEND = MINUS DRAFT = PLUS DRAFT = ADDITIONAL CONTROL REQ'D = BRINELL HARDNESS		Drawings to conform to the current revision of the following ANSI standards: Y14.3 Multi and sectional view dgs. Y14.5M Dimensioning and tolerancing	
TOLERANCES NOT SPECIFIED .XX ± .XXX ± \angle(DEG) ±		DO NOT SCALE DRAWING FOR DIMENSIONS AUTOCAD REL2000 INCH Sheet 2 of 5 SCALE 1:10	
CONFIDENTIAL DISCLOSURE This drawing is the property of POWEX, INC. OF THE SCOTT FETZER COMPANY and subject to return on demand. Its contents are confidential and must not be copied or submitted to outside parties for use or examination.			
MATERIAL N/A		DRAWN BY RSN	
PART NAME DUPLEX MEDICAL SCROLL FLOW SCHEMATIC		CHECKED BY GES	
DWG NO MSD1504		APPROVED BY ENGINEERING MFG/MKTG DMS JJ	
DATE 07/19/06		DATE 10/19/06	
DATE 10/19/06		DATE 10/19/06	

REV	ZONE	REVISION	DATE	ECN	NAME	CHKD
G-2	ALL	ADDED SHEETS 3-5	11/12/09	22127	AEK	GES
H-1	1 ALL	ADDED SYSTEM OUTLET DIMENSIONS	3/1/10	22348	AEK	GES
J-1	ALL	UPDATED MULTI-SCROLL FRAMES	11/2/10	22405	AEK	GES
K-1	ALL	ADDED PBM SHEETS	10/10/11	22609	AEK	GES
L-1	2 ALL	UPDATED/ADDED FLEX LINES	10/22/12	PXEC0009	AEK	DMS
M-1	2 C4	MOVED PRESSURE SENSING LOCATION	7/10/14	PXEC0071	AEK	GES

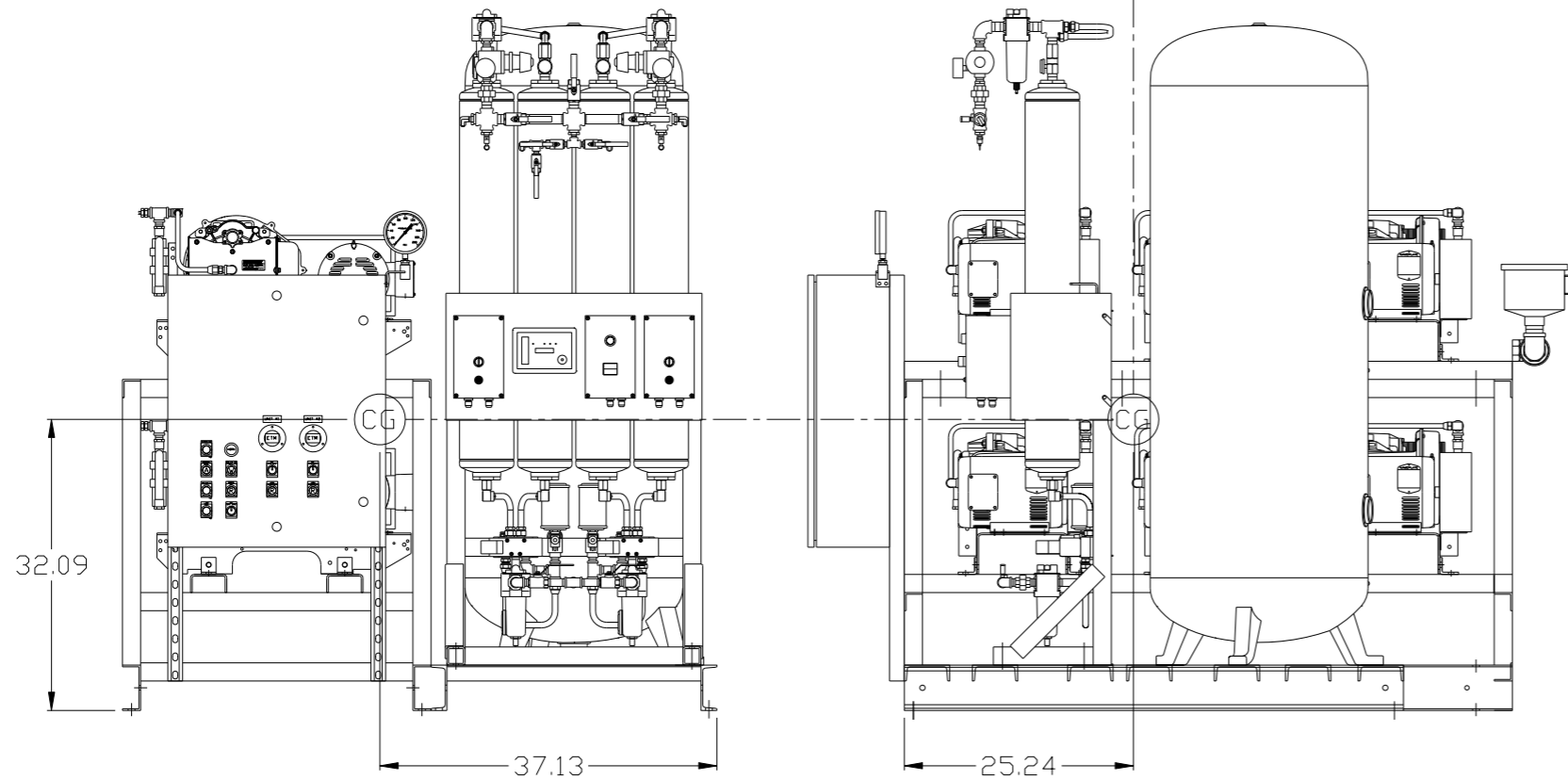
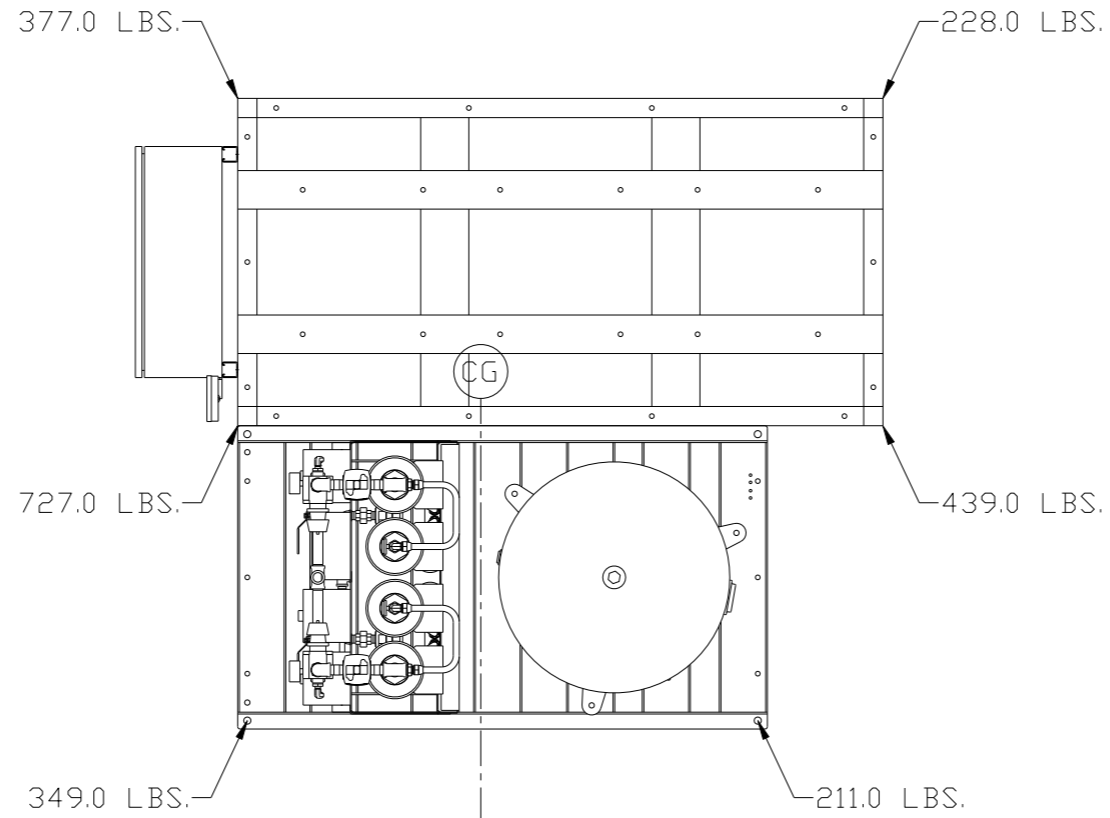


(CG) denotes center of gravity

TOTAL WEIGHT: 809 LBS
 C.O.G. DIMENSIONS
 X (FRONT): -15.75"
 Y (RIGHT): 27.02"
 Z (HEIGHT): 32.52"

SYMBOL LEGEND ⊖ = MINUS DRAFT ⊕ = PLUS DRAFT ∅ = ADDITIONAL CONTROL REQ'D HRC = BRINELL HARDNESS		Drawings to conform to the current revision of the following ANSI standards: Y14.3 Multi and sectional view dgs. Y14.5M Dimensioning and tolerancing	
TOLERANCES NOT SPECIFIED .XX ± .XXX ± <DEG> ±		AUTOCAD REL2008 LT INCH DO NOT SCALE DRAWING FOR DIMENSIONS Sheet 4 of 5 SCALE 1:10	
CONFIDENTIAL DISCLOSURE This drawing is the property of POWEREX, INC. of the SCOTT FETZER COMPANY and subject to return on demand. Its contents are confidential and must not be copied or submitted to outside parties for use or examination.			
DRAWN BY AEK		CHECKED BY GES	
APPROVED BY DMS		MFG/MKTG JJ	
MATERIAL N/A		11/12/09 11/12/09 11/12/09 11/12/09	
PART NAME 15HP DUPLEX SCROLL PKG		 150 PRODUCTION DRIVE, HARRISON, OHIO 45030 Ph: 888-769-7979 FAX: (513) 367-3125	
CENTER OF GRAVITY		DWG NO MSD1504 SIZE D	

REV	ZONE	REVISION	DATE	ECN	NAME	CHKD
G-2	ALL	ADDED SHEETS 3-5	11/12/09	22127	AEK	GES
H-1	1 ALL	ADDED SYSTEM OUTLET DIMENSIONS	3/1/10	22348	AEK	GES
J-1	ALL	UPDATED MULTI-SCROLL FRAMES	11/2/10	22405	AEK	GES
K-1	ALL	ADDED PBM1 SHEETS	10/10/11	22609	AEK	GES
L-1	2 ALL	UPDATED/ADDED FLEX LINES	10/22/12	PXEC0009	AEK	DMS
M-1	2 C4	MOVED PRESSURE SENSING LOCATION	7/10/14	PXEC0071	AEK	GES

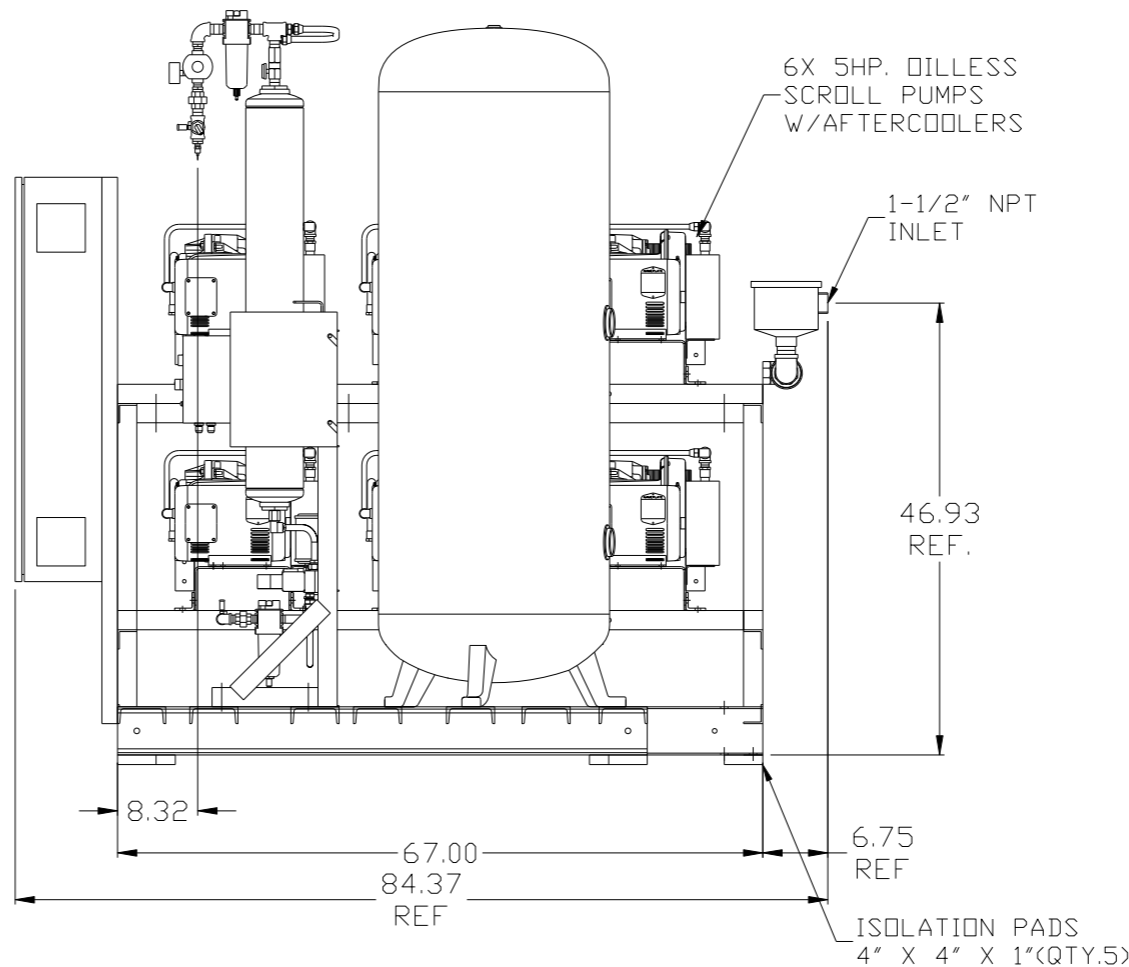
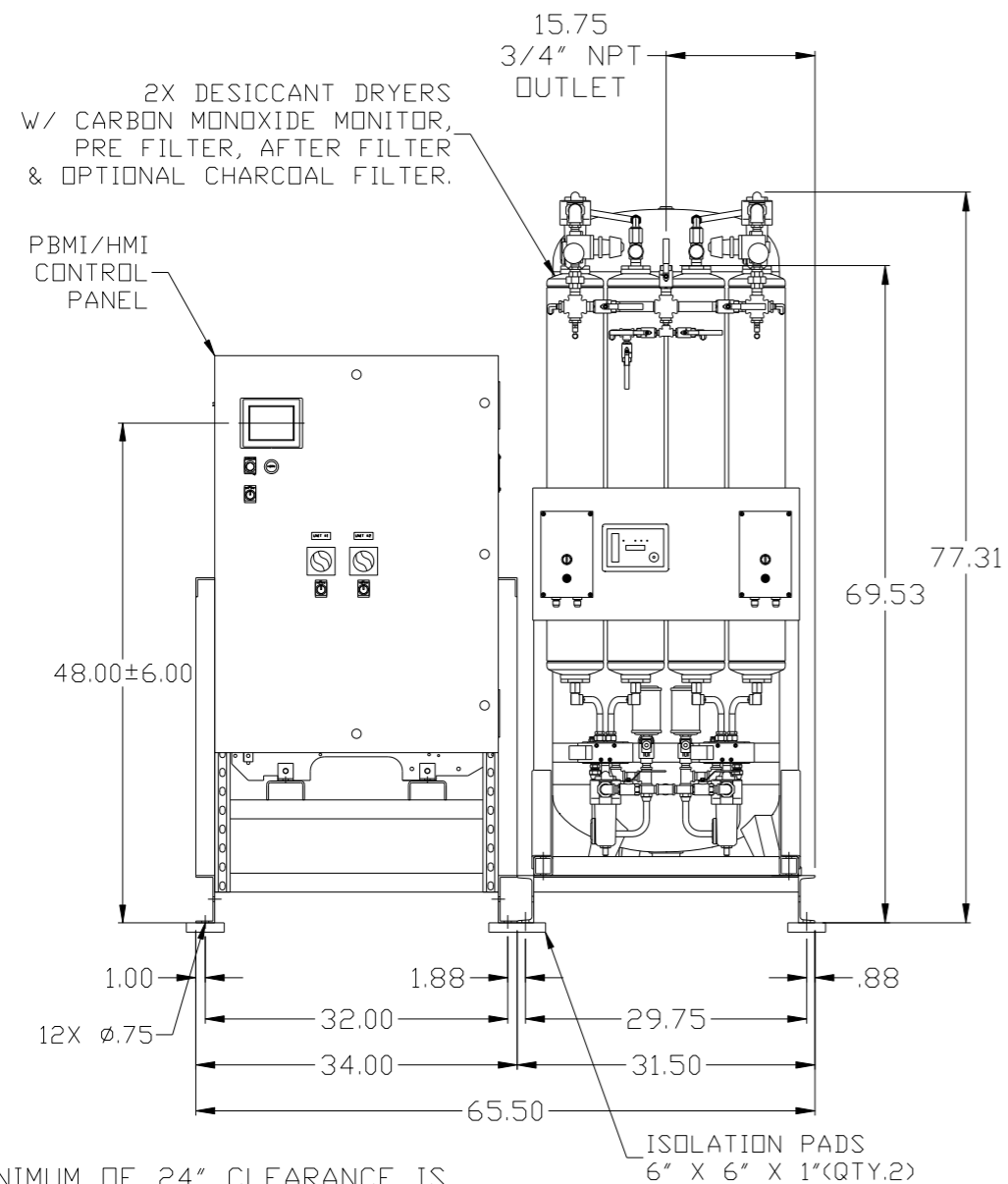
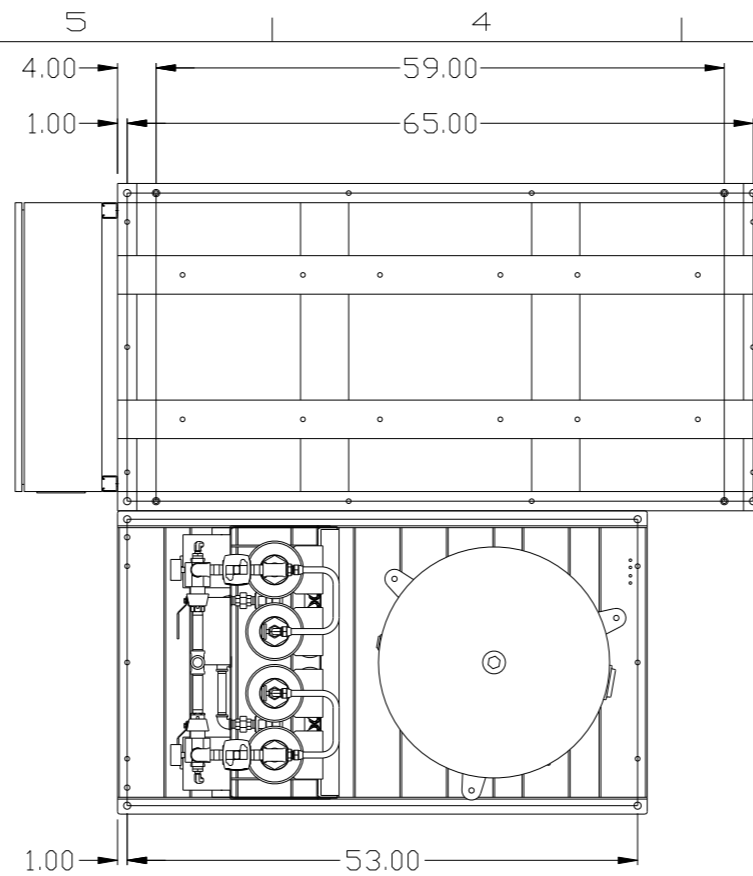


TOTAL WEIGHT: 2331 LBS
 C.O.G. DIMENSIONS
 X (FRONT): -37.13"
 Y (RIGHT): 25.24"
 Z (HEIGHT): 32.09"

(CG) denotes center of gravity

SYMBOL LEGEND		= ADDITIONAL CONTROL REQ'D		Drawings to conform to the current revision of the following ANSI standards	
⊖	MINUS DRAFT	⊕	PLUS DRAFT	⊖	BRINELL HARDNESS
TOLERANCES NOT SPECIFIED		AUTOCAD REL2008 LT		DO NOT SCALE DRAWING FOR DIMENSIONS	
.XX ±		INCH		Sheet 5 of 5	SCALE 1:10
CONFIDENTIAL DISCLOSURE This drawing is the property of POWEREX, INC. of the SCOTT FETZER COMPANY and subject to return on demand. Its contents are confidential and must not be copied or submitted to outside parties for use or examination.					
DRAWN BY		CHECKED BY		APPROVED BY	
AEK		GES		DMS JJ	
11/12/09		11/12/09		11/12/09 11/12/09	
MATERIAL		N/A		 150 PRODUCTION DRIVE, HARRISON, OHIO 45030 Ph: 888-769-7979 FAX: (513) 367-3125	
PART NAME		15HP DUPLEX SCROLL PKG		SIZE	
CENTER OF GRAVITY				MSD1504	

REV	ZONE	REVISION	DATE	ECN	NAME	CHKD
K-1	ALL	ADDED PBMI SHEETS	10/10/11	22609	AEK	GES
L-1	2 ALL	UPDATED/ADDED FLEX LINES	10/22/12	PXEC0009	AEK	DMS
M-1	2 C4	MOVED PRESSURE SENSING LOCATION	7/10/14	PXEC0071	AEK	GES

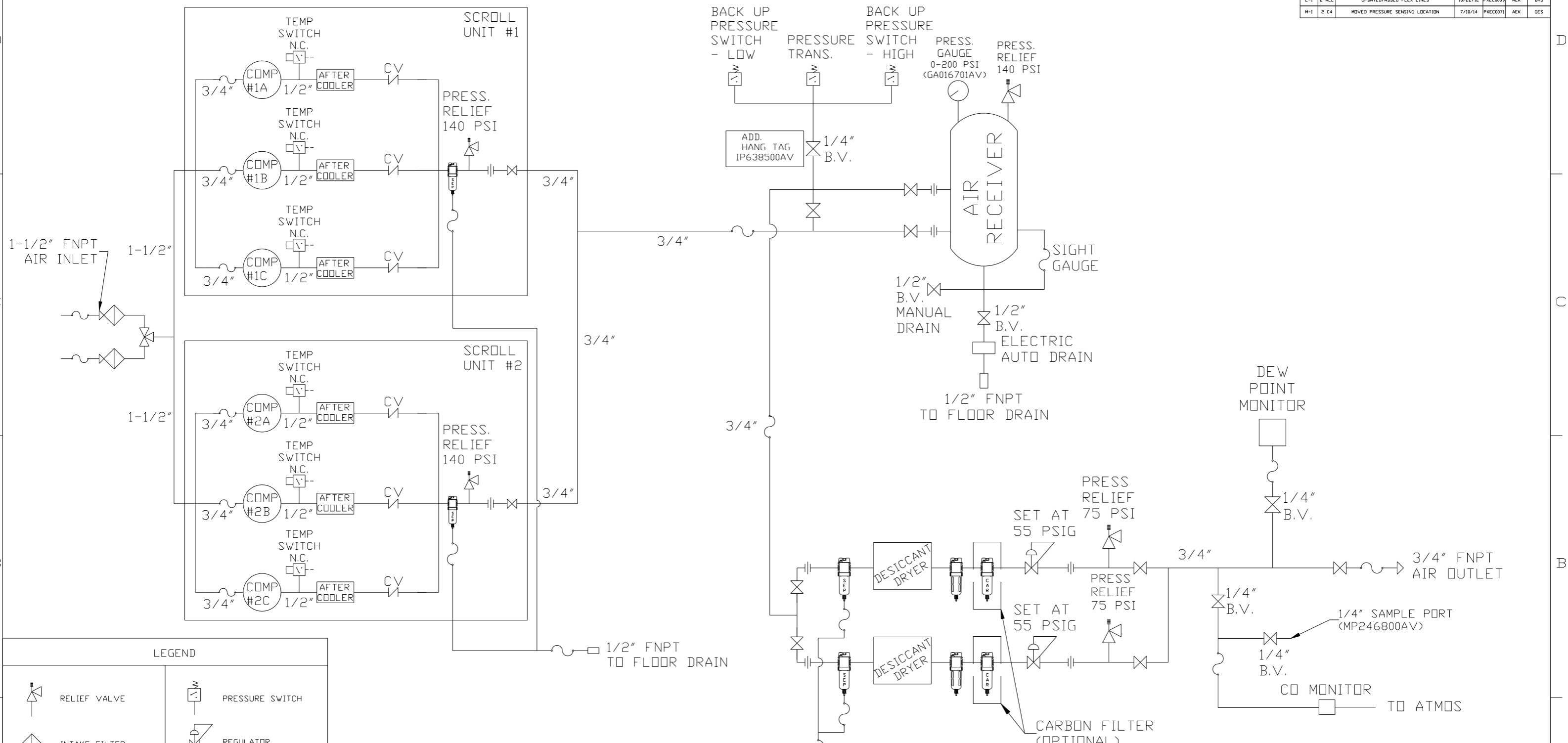


NOTE: SYSTEM DESIGNED IN COMPLIANCE WITH US NFPA'99, LATEST EDITION.

SYMBOL LEGEND		= ADDITIONAL CONTROL REQ'D		Drawings to conform to the current revision of the following ANSI standards:	
⊖	MINUS DRAFT	⊕	PLUS DRAFT	⊖	BRINELL HARDNESS
TOLERANCES NOT SPECIFIED		AUTOCAD REL2008 LT		DO NOT SCALE DRAWING FOR DIMENSIONS	
.XX	±	INCH		Sheet 1 of 5	SCALE 1:10
.XXX	±				
<Z< DEG	±				
CONFIDENTIAL DISCLOSURE					
This drawing is the property of POWEREX, INC. of the SCOTT FETZER COMPANY and subject to return on demand. Its contents are confidential and must not be copied or submitted to outside parties for use or examination.					
DRAWN BY		CHECKED BY		APPROVED BY	
AEK		GES		DMS RJR	
10/10/11		10/10/11		10/10/11	
MATERIAL		N/A			
PART NAME		DUPLX OILLESS SCROLL			
15HP. 120 GAL. BASEMOUNT					
		DWG NO		MSD1504	
		SIZE		D	

NOTE: A MINIMUM OF 24" CLEARANCE IS RECOMMENDED AROUND THE ENTIRE UNIT.

REV	ZONE	REVISION	DATE	ECN	NAME	CHKD
K-1	ALL	ADDED PBM1 SHEETS	10/10/11	22609	AEK	GES
L-1	2 ALL	UPDATED/ADDED FLEX LINES	10/22/12	PXEC0009	AEK	DMS
M-1	2 C4	MOVED PRESSURE SENSING LOCATION	7/18/14	PXEC0071	AEK	GES

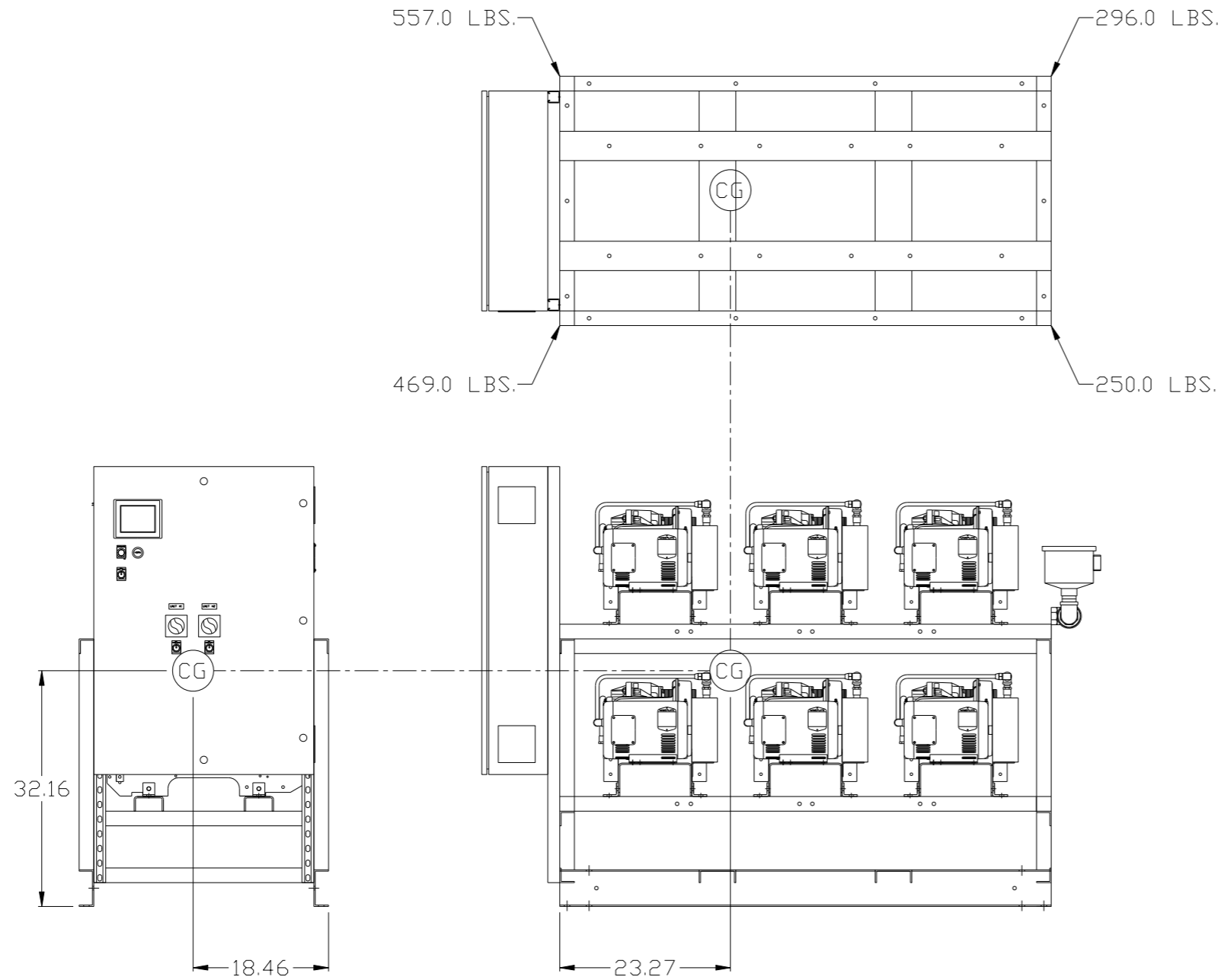


LEGEND	
	RELIEF VALVE
	INTAKE FILTER
	AIR FILTER
	3 WAY VALVE
	CARBON FILTER
	BALL VALVE
	PRESSURE SWITCH
	REGULATOR
	SEPARATOR
	CHECK VALVE
	FLEX LINE
	HIGH TEMP SWITCH
	UNION

- NOTES:
- 1) IF LAG 1 COMPRESSOR IS ENERGIZED ALARM WILL OCCUR.
 - 2) PIPING TO THE INLET BY OTHERS AND TO BE PER NFPA99 4-3.1.9(b)
 - 3) INSTRUMENTS DOWN STREAM OF SOURCE VALVE TO BE SUPPLIED BY OTHERS.
 - 4) MINIMUM RECOMMENDED INLET PIPE SIZE IS 3"


SYMBOL LEGEND			ADDITIONAL CONTROL	Drawings to conform to the current revision of the following ANSI standards: Y14.3 Multi and sectional view dgs. Y14.5M Dimensioning and tolerancing
	MINUS DRAFT		BRINELL HARDNESS	
TOLERANCES NOT SPECIFIED		AUTOCAD REL2008 LT	DO NOT SCALE DRAWING FOR DIMENSIONS	
.XX ±		INCH	Sheet 2 of 5	SCALE 1:10
CONFIDENTIAL DISCLOSURE This drawing is the property of POWEREX, INC. of the SCOTT FETZER COMPANY and subject to return on demand. Its contents are confidential and must not be copied or submitted to outside parties for use or examination.				
DRAWN BY	CHECKED BY	APPROVED BY	MFG/MKTG	
AEK	GES	DMS	RJR	
DATE	DATE	DATE	DATE	
10/10/11	10/10/11	10/10/11	10/10/11	
MATERIAL		N/A		
PART NAME		DUPLIX MEDICAL SCROLL FLOW SCHEMATIC		
DWG NO		MSD1504		
SIZE		D		

REV	ZONE	REVISION	DATE	ECN	NAME	CHKD
K-1	ALL	ADDED PBM1 SHEETS	10/10/11	22609	AEK	GES
L-1	2 ALL	UPDATED/ADDED FLEX LINES	10/22/12	PXEC0009	AEK	DMS
M-1	2 C4	MOVED PRESSURE SENSING LOCATION	7/10/14	PXEC0071	AEK	GES



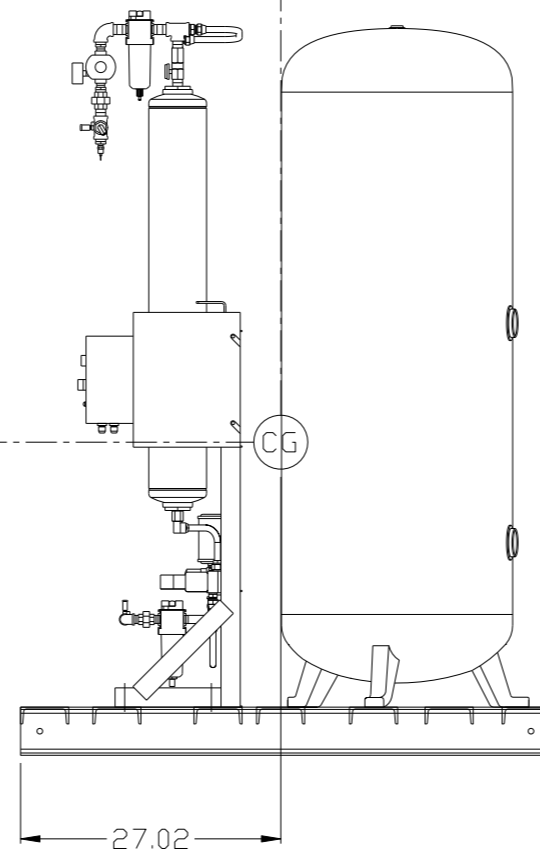
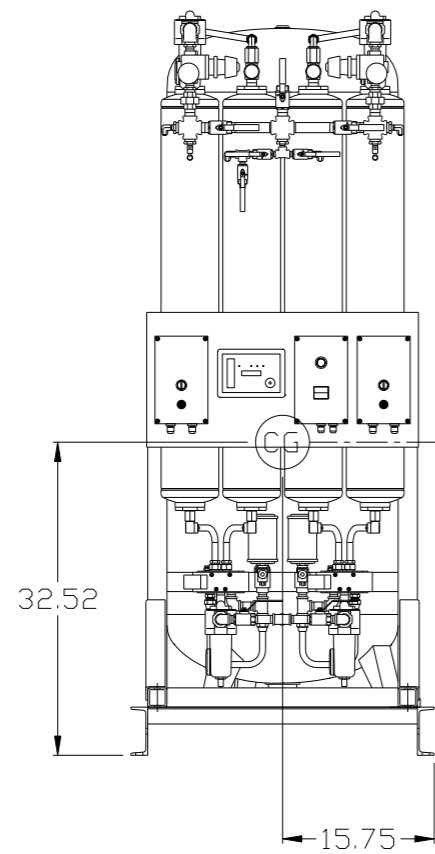
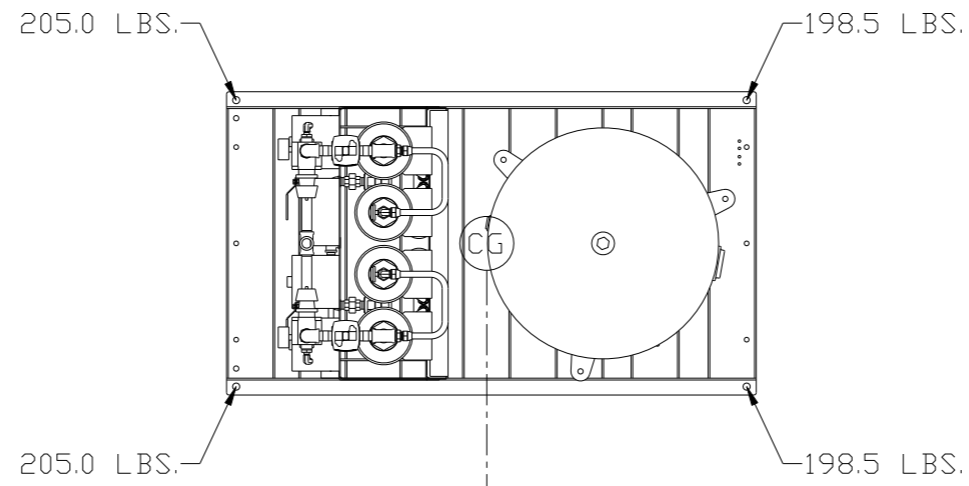
(CG) denotes center of gravity

TOTAL WEIGHT: 1572 LBS
 C.O.G. DIMENSIONS
 X (FRONT): -18.46"
 Y (RIGHT): 23.27"
 Z (HEIGHT): 32.16"

SYMBOL LEGEND		ADDITIONAL CONTROL REQ'D		Drawings to conform to the current revision of the following ANSI standards:	
⊖	MINUS DRAFT	⊕	PLUS DRAFT	Ⓢ	BRINELL HARDNESS
TOLERANCES NOT SPECIFIED		AUTOCAD REL2008 LT		DO NOT SCALE DRAWING FOR DIMENSIONS	
.XX ±		INCH		Sheet 3 of 5	SCALE 1:10
CONFIDENTIAL DISCLOSURE This drawing is the property of POWEREX, INC. of the SCOTT FETZER COMPANY and subject to return on demand. Its contents are confidential and must not be copied or submitted to outside parties for use or examination.		DRAWN BY AEK	CHECKED BY GES	APPROVED BY DMS	MFG/MKTG RJR
MATERIAL N/A		10/10/11	10/10/11	10/10/11	10/10/11
PART NAME 15HP DUPLEX SCROLL PKG		 150 PRODUCTION DRIVE, HARRISON, OHIO 45030 Ph: 888-769-7979 FAX: (513) 367-3125		DWG NO MSD1504	SIZE D
CENTER OF GRAVITY					

8 7 6 5 4 3 2 1

REV	ZONE	REVISION	DATE	ECN	NAME	CHKD
K-1	ALL	ADDED PBM1 SHEETS	10/10/11	22609	AEK	GES
L-1	2 ALL	UPDATED/ADDED FLEX LINES	10/22/12	PXEC0009	AEK	DMS
M-1	2 C4	MOVED PRESSURE SENSING LOCATION	7/10/14	PXEC0071	AEK	GES



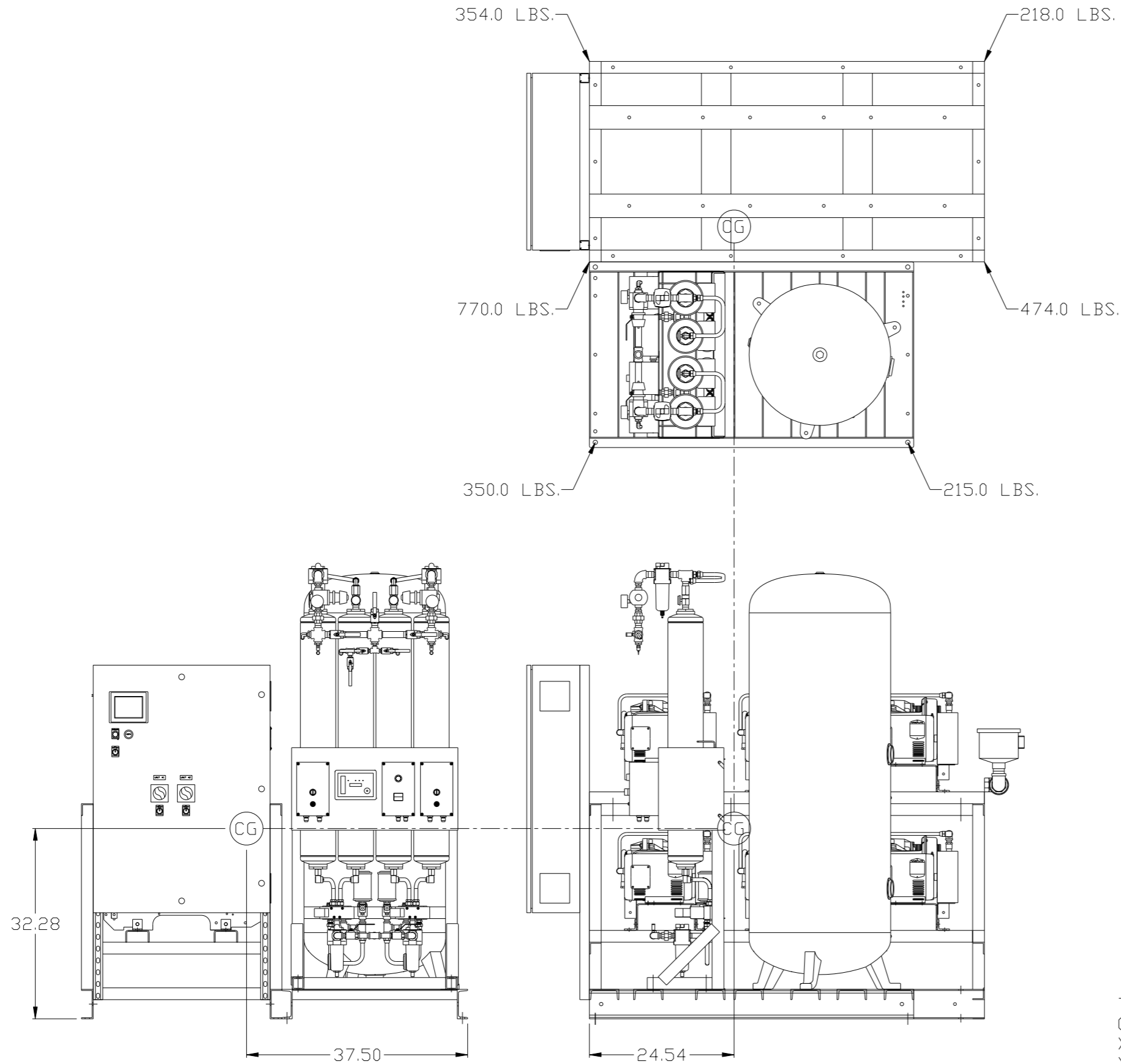
(CG) denotes center of gravity

TOTAL WEIGHT: 809 LBS
 C.O.G. DIMENSIONS
 X (FRONT): -15.75"
 Y (RIGHT): 27.02"
 Z (HEIGHT): 32.52"

SYMBOL LEGEND ⊖ = MINUS DRAFT ⊕ = PLUS DRAFT TOLERANCES NOT SPECIFIED .XX ± .XXX ± <<DEG> ±		= ADDITIONAL CONTROL REQ'D = BRINELL HARDNESS		Drawings to conform to the current revision of the following ANSI standards: Y14.3 Multi and sectional view dgs. Y14.5M Dimensioning and tolerancing
AUTOCAD REL2008 LT INCH		DO NOT SCALE DRAWING FOR DIMENSIONS Sheet 4 of 5 SCALE 1:10		
CONFIDENTIAL DISCLOSURE This drawing is the property of POWEREX, INC. of the SCOTT FETZER COMPANY and subject to return on demand. Its contents are confidential and must not be copied or submitted to outside parties for use or examination.				
DRAWN BY AEK		CHECKED BY GES		
APPROVED BY DMS		MFG/MKTG RJR		
MATERIAL N/A		10/10/11 10/10/11 10/10/11 10/10/11		
PART NAME 15HP DUPLEX SCROLL PKG		 150 PRODUCTION DRIVE, HARRISON, OHIO 45030 Ph: 888-769-7979 FAX: (513) 367-3125		
CENTER OF GRAVITY		DWG NO MSD1504		
		SIZE D		

8 7 6 5 4 3 2 1

REV	ZONE	REVISION	DATE	ECN	NAME	CHKD
K-1	ALL	ADDED PBM1 SHEETS	10/10/11	22609	AEK	GES
L-1	2 ALL	UPDATED/ADDED FLEX LINES	10/22/12	PXEC0009	AEK	DMS
M-1	2 C4	MOVED PRESSURE SENSING LOCATION	7/10/14	PXEC0071	AEK	GES



TOTAL WEIGHT: 2381 LBS
 C.O.G. DIMENSIONS
 X (FRONT): -37.50"
 Y (RIGHT): 24.54"
 Z (HEIGHT): 32.28"

CG denotes center of gravity

SYMBOL LEGEND ⊖ = MINUS DRAFT ⊕ = PLUS DRAFT ⊕ = ADDITIONAL CONTROL REQ'D HRC = BRINELL HARDNESS		Drawings to conform to the current revision of the following ANSI standards: Y14.3 Multi and sectional view dgs. Y14.5M Dimensioning and tolerancing	
TOLERANCES NOT SPECIFIED .XX ± .XXX ± \angle(DEG) ±		AUTOCAD REL2008 LT INCH DO NOT SCALE DRAWING FOR DIMENSIONS Sheet 5 of 5 SCALE 1:10	
CONFIDENTIAL DISCLOSURE This drawing is the property of POWEREX, INC. of the SCOTT FETZER COMPANY and subject to return on demand. Its contents are confidential and must not be copied or submitted to outside parties for use or examination.			
MATERIAL N/A		POWEREX 150 PRODUCTION DRIVE, HARRISON, OHIO 45030 Ph: 888-769-7979 FAX: (513) 367-3125	
PART NAME 15HP DUPLEX SCROLL PKG CENTER OF GRAVITY		DWG NO MSD1504 SIZE D	