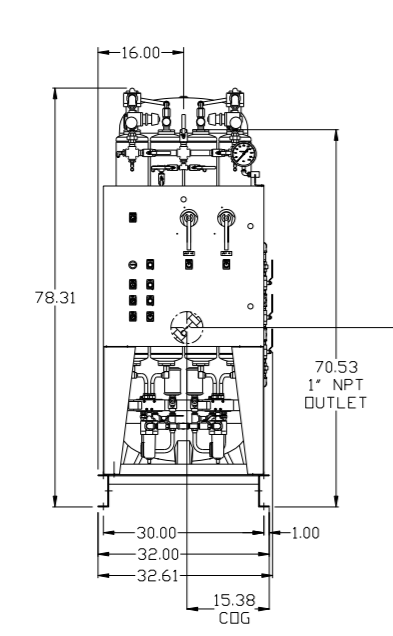
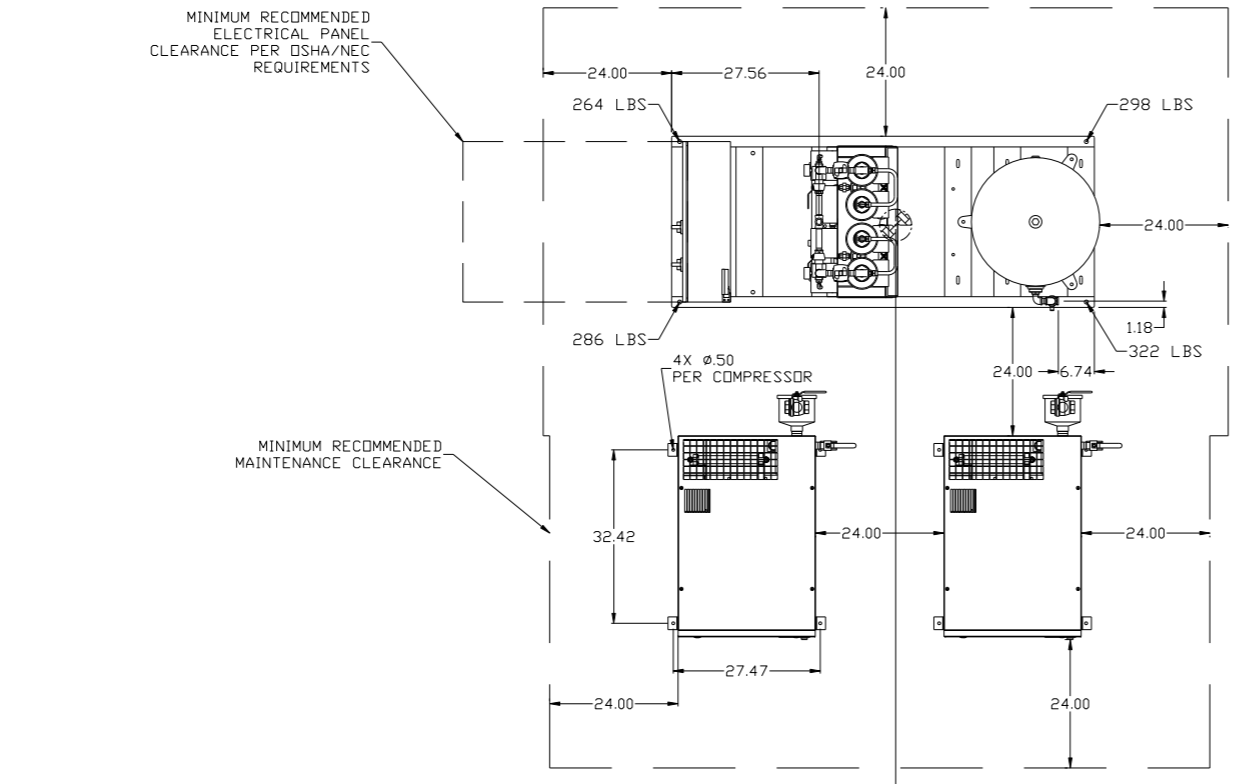


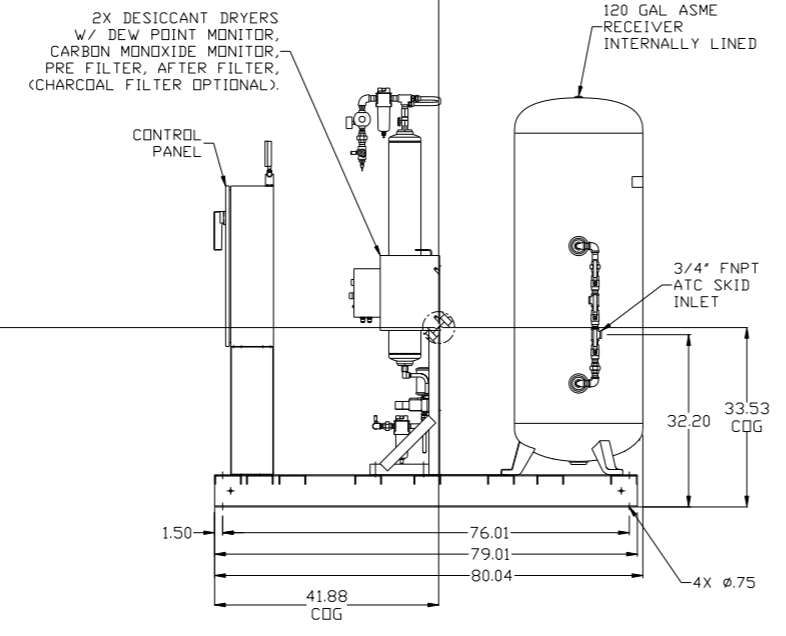
REV	ZONE	REVISION	DATE	ECN	NAME	CHKD
B-1	ALL	RELEASE TO PRODUCTION	10/1/07	21668	AEK	GES
C-1	1 ALL	CHANGES DRYER; CHANGED 40HP TO 20HP IN TITLE BLOCK AND NOTES	1/14/08	21906	AEK	GES
D-1	ALL	UPDATED BUILD & FLOW TO CURRENT STANDARD	6/3/08	21907	AEK	GES
D-2	ALL	CORRECTED INLET PLUMBING & ORIENTATION	10/23/08	21907	AEK	GES
E-1	ALL	UPDATED TO NEW POWEREX DRYER	8/19/09	22120	AEK	GES
F-1	1 ALL	UPDATED TO NEW ENCLOSURE DESIGN	6/18/10	22394	AEK	GES
G-1	2 DS	ADDED RESERVE PRESSURE SWITCH TO FLOW SCHEMATIC	2/10/14	PXEC0024	AEK	GES
G-1	2 ALL 1 ALL 2 CS 1 ALL	ADDED/UPDATED FLEX LINES UPDATED TO CURRENT MASTER CONTROL PANEL ADDED RESERVE PRESSURE SWITCH ADDED ATC SKID INLET LOCATION	2/10/14	PXEC0067	AEK	GES
H-1	1 ALL	ADDED C.O.G. INFORMATION	5/14/18	PXEC0227	GES	KMD

MINIMUM RECOMMENDED ELECTRICAL PANEL CLEARANCE PER OSHA/NEC REQUIREMENTS

MINIMUM RECOMMENDED MAINTENANCE CLEARANCE



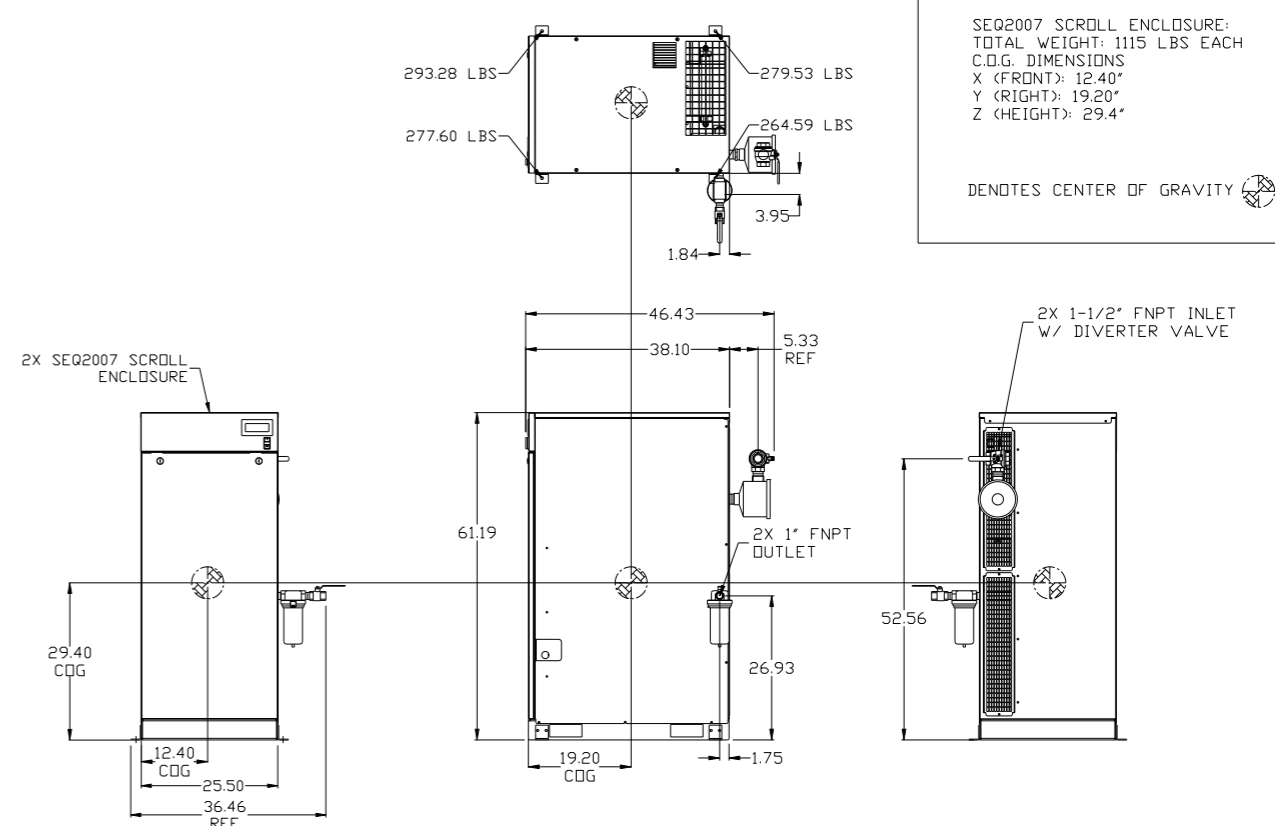
FRONT VIEW (TANK/DRYER SKID)



RIGHT VIEW (TANK/DRYER SKID)

AIR TREATMENT SKID:  
TOTAL WEIGHT: 1170 LBS EACH  
C.O.G. DIMENSIONS  
X (FRONT): 15.38"  
Y (RIGHT): 41.88"  
Z (HEIGHT): 33.53"

DENOTES CENTER OF GRAVITY



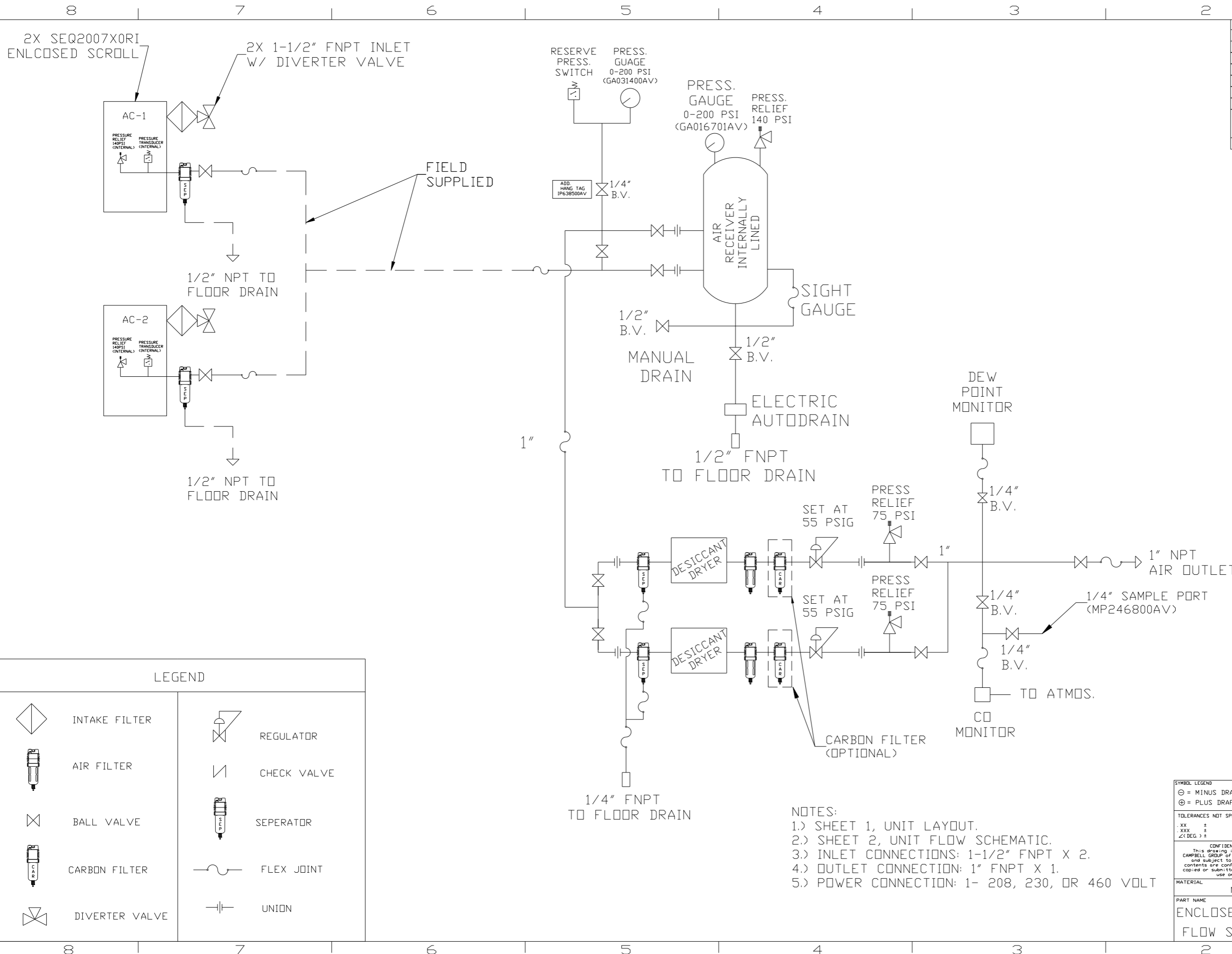
FRONT VIEW (SCROLL ENCLOSURE)    RIGHT VIEW (SCROLL ENCLOSURE)    REAR VIEW (SCROLL ENCLOSURE)

SEQ2007 SCROLL ENCLOSURE:  
TOTAL WEIGHT: 1115 LBS EACH  
C.O.G. DIMENSIONS  
X (FRONT): 12.40"  
Y (RIGHT): 19.20"  
Z (HEIGHT): 29.4"

DENOTES CENTER OF GRAVITY

- NOTES:
- 1.) SHEET 1, UNIT LAYOUT.
  - 2.) SHEET 2, UNIT FLOW SCHEMATIC.
  - 3.) INLET CONNECTIONS: 1-1/2" FNPT X 2.
  - 4.) OUTLET CONNECTION: 1" FNPT X 1.
  - 5.) POWER CONNECTION: 1- 208, 230, OR 460 VOLT
  - 6.) WHEN PACKAGE IS INSTALLED INTO THE FACILITY, MAKE SURE THAT THE INSTALLER REFERENCES TABLE 110.26 (A) (1) FOR MINIMUM WORKING AREA.

SYMBOL LEGEND		= ADDITIONAL CONTROL REQ'D		Drawings to conform to the current revision of the following ANSI standards:	
= MINUS DRAFT		= BRINELL HARDNESS		Y14.3 Multi and sectional view dgs. Y14.5M Dimensioning and tolerancing	
= PLUS DRAFT					
TOLERANCES NOT SPECIFIED		AUTOCAD REL2008 LT		DO NOT SCALE DRAWING FOR DIMENSIONS	
.XX ±		INCH		Sheet 1 of 2	
.XXX ±				SCALE 1:18	
Z<DEG> ±					
CONFIDENTIAL DISCLOSURE This drawing is the property of the CAMPBELL GROUP OF THE SCOTT FETZER COMPANY and subject to return on demand. Its contents are confidential and must not be copied or submitted to outside parties for use or examination.					
DRAWN BY		CHECKED BY		APPROVED BY	
AEK		GES		DMS DB	
10/1/07		10/1/07		10/1/07 10/1/07	
MATERIAL		N/A		POWEREX	
PART NAME		MEDICAL SCROLL ENCLOSED		150 PRODUCTION DRIVE, HARRISON, OHIO 45030 Ph 888-769-7979 FAX (513) 367-3125	
20HP DUPLEX		DWG NO		MSED200	
				SIZE D	



REV	ZONE	REVISION	DATE	ECN	NAME	CHKD
B-1	ALL	RELEASE TO PRODUCTION	10/1/07	21668	AEK	GES
C-1	1	CHANGED DRYERS; CHANGED 40P TO 20P IN TITLE BLOCK AND NOTES	1/14/08	21906	AEK	GES
D-1	ALL	UPDATED BUILD & FLOW TO CURRENT STANDARD	6/3/08	21907	AEK	GES
D-2	ALL	CORRECTED INLET PLUMBING & ORIENTATION	10/23/08	21907	AEK	GES
E-1	ALL	UPDATED TO NEW POWEREX DRYER	8/19/09	22120	AEK	GES
F-1	1	UPDATED TO NEW ENCLOSURE DESIGN	6/18/10	22394	AEK	GES
G-1	2 DS	ADDED RESERVE PRESSURE SWITCH TO FLOW SCHEMATIC	2/10/14	PXEC0024	AEK	GES
G-1	1 ALL 2 CS 1 ALL	ADDED/UPDATED FLEX LINES UPDATED TO CURRENT MASTER CONTROL PANEL ADDED RESERVE PRESSURE SWITCH ADDED ATC SKID INLET LOCATION	2/10/14	PXEC0067	AEK	GES
H-1	1 ALL	ADDED C.D.G. INFORMATION	5/14/18	PXEC0227	GES	KMD

LEGEND

	INTAKE FILTER		REGULATOR
	AIR FILTER		CHECK VALVE
	BALL VALVE		SEPERATOR
	CARBON FILTER		FLEX JOINT
	DIVERTER VALVE		UNION

- NOTES:  
 1.) SHEET 1, UNIT LAYOUT.  
 2.) SHEET 2, UNIT FLOW SCHEMATIC.  
 3.) INLET CONNECTIONS: 1-1/2" FNPT X 2.  
 4.) OUTLET CONNECTION: 1" FNPT X 1.  
 5.) POWER CONNECTION: 1- 208, 230, OR 460 VOLT

SYMBOL LEGEND			= ADDITIONAL CONTROL REQ'D		Drawings to conform to the current revision of the following ANSI standards:	
	= MINUS DRAFT		= BRINELL HARDNESS		Y14.3 Multi and sectional view dsgs. Y14.5M Dimensioning and tolerancing	
TOLERANCES NOT SPECIFIED		AUTOCAD REL2008 LT	DO NOT SCALE DRAWING FOR DIMENSIONS			
.XX ±	.XXX ±	INCH	Sheet 2 of 2	SCALE 1:18		
CONFIDENTIAL DISCLOSURE This drawing is the property of the CAMPBELL GROUP OF THE SCOTT FETZER COMPANY and subject to return on demand. Its contents are confidential and must not be copied or submitted to outside parties for use or examination.		DRAWN BY AEK	CHECKED BY GES	APPROVED BY DMS	MFG/MRKTG DB	
MATERIAL N/A		10/1/07	10/1/07	10/1/07	10/1/07	
PART NAME ENCLOSED SCROLL FLOW SCHEMATIC				150 PRODUCTION DRIVE, HARRISON, OHIO 45030 Ph 888-769-7979 FAX (513) 367-3125		
DWG NO MSED200		SIZE D		nsed200.dwg		