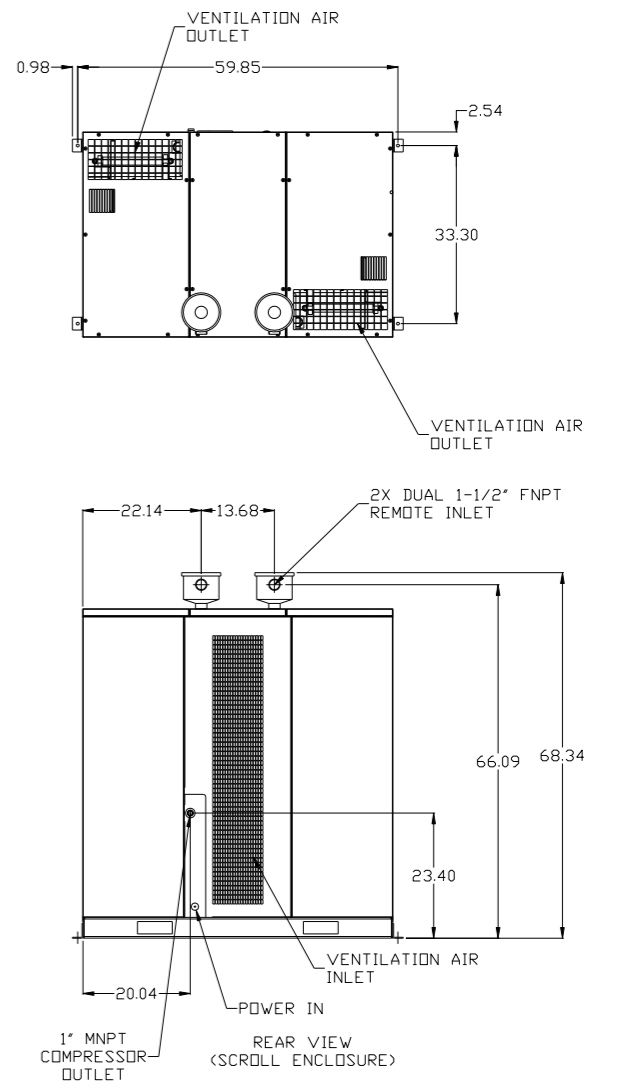
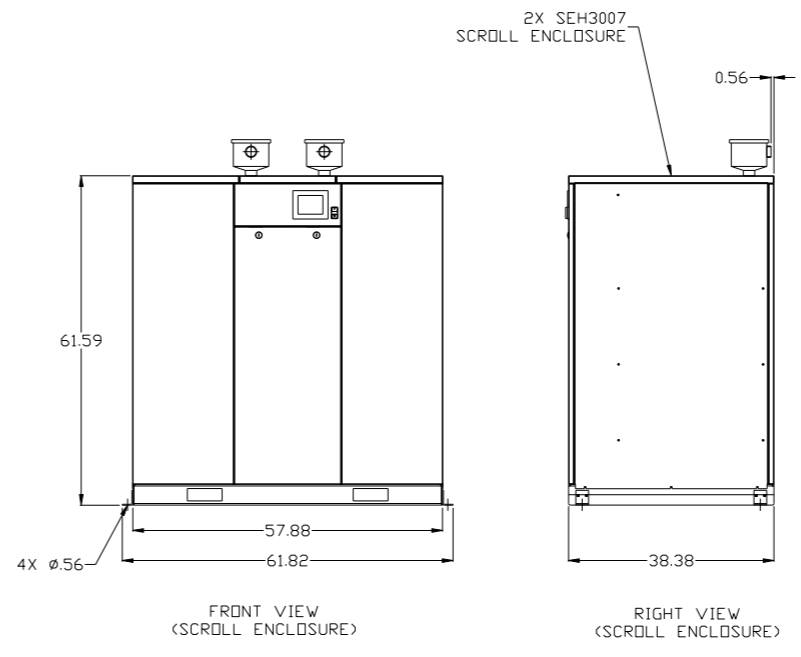
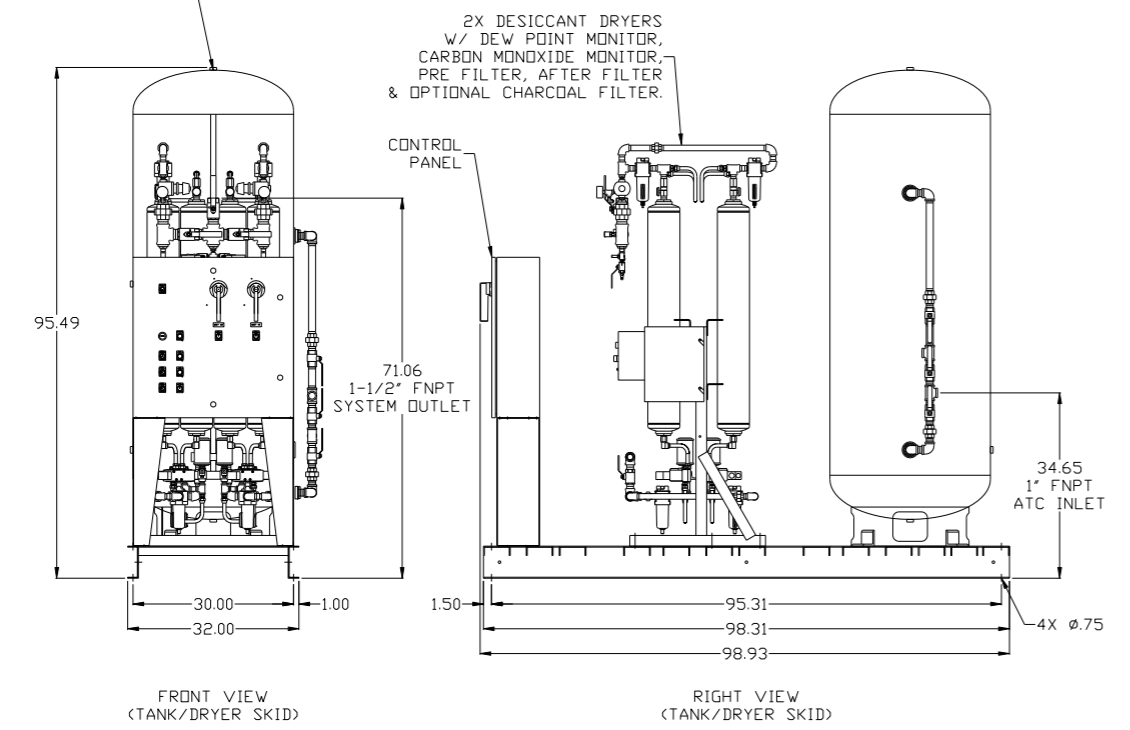
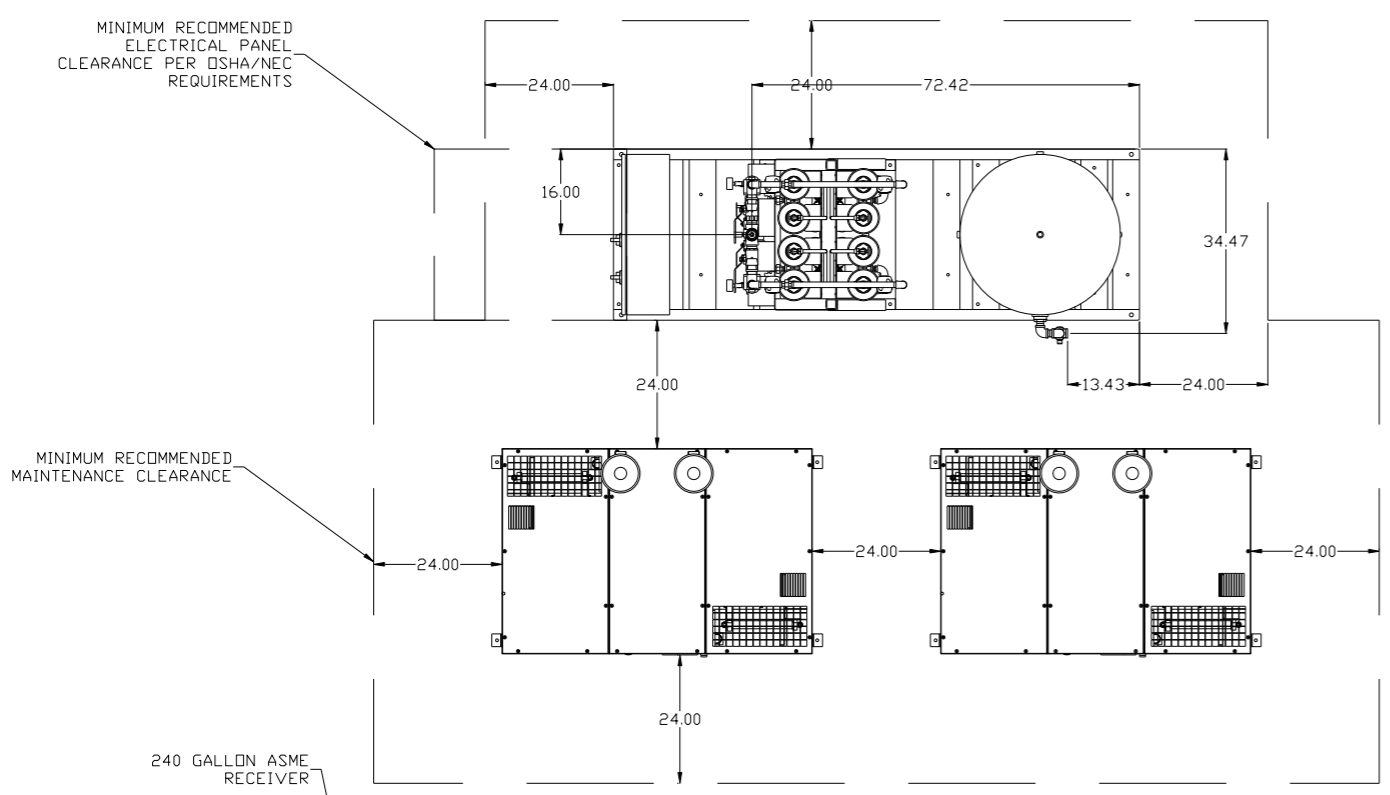


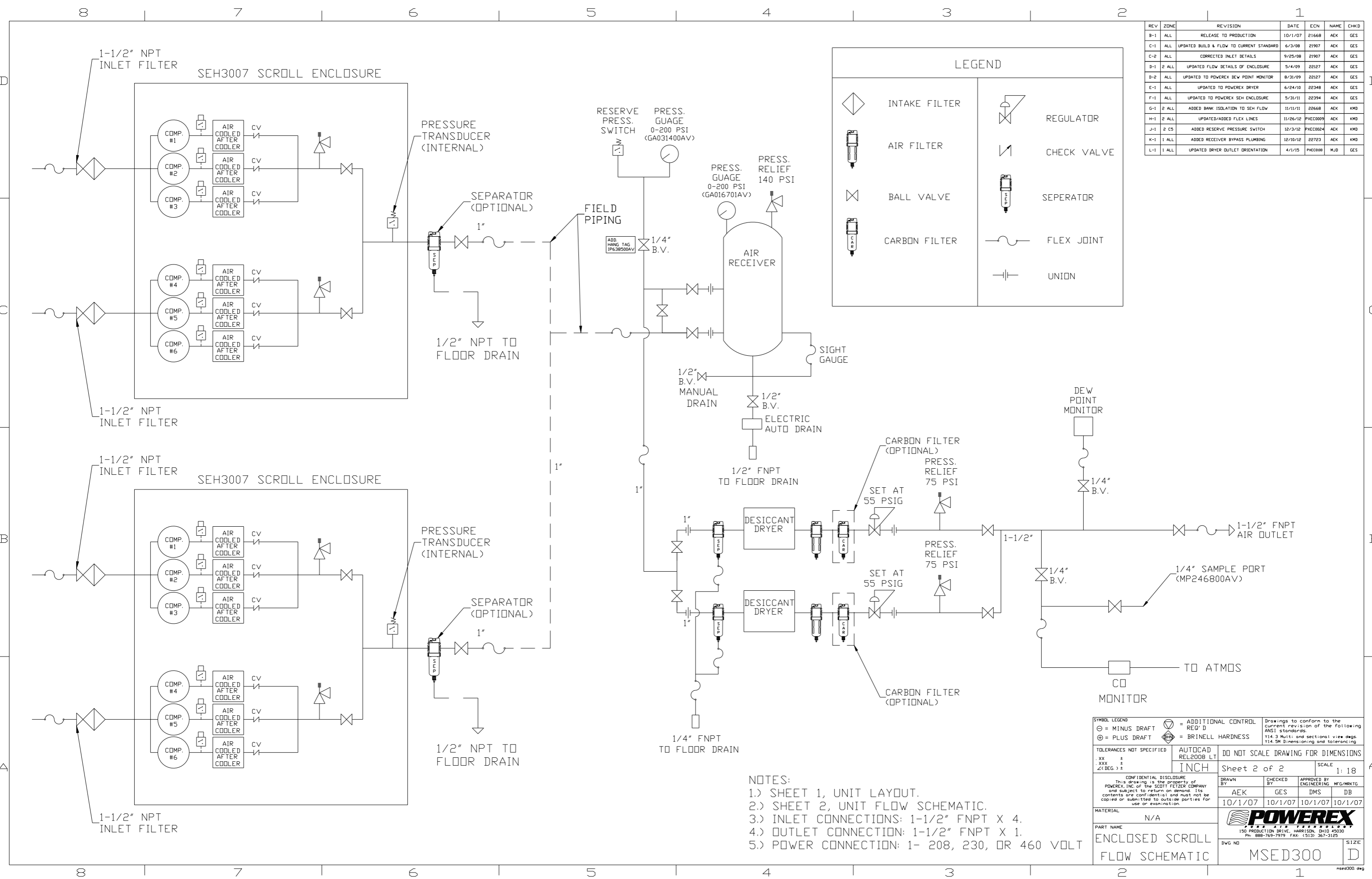
REV	ZONE	REVISION	DATE	ECN	NAME	CHKD
B-1	ALL	RELEASE TO PRODUCTION	10/1/07	21668	AEK	GES
C-1	ALL	UPDATED BUILD & FLOW TO CURRENT STANDARD	6/3/08	21907	AEK	GES
C-2	ALL	CORRECTED INLET DETAILS	9/25/08	21907	AEK	GES
D-1	2 ALL	UPDATED FLOW DETAILS OF ENCLOSURE	5/4/09	22127	AEK	GES
D-2	ALL	UPDATED TO POWEREX DEW POINT MONITOR	8/31/09	22127	AEK	GES
E-1	ALL	UPDATED TO POWEREX DRYER	6/24/10	22348	AEK	GES
F-1	ALL	UPDATED TO POWEREX SEH ENCLOSURE	5/31/11	22394	AEK	GES
G-1	2 ALL	ADDED BANK ISOLATION TO SEH FLOW	11/11/11	22668	AEK	KMD
H-1	2 ALL	UPDATED/ADDED FLEX LINES	11/26/12	PXEC0009	AEK	KMD
J-1	2 CS	ADDED RESERVE PRESSURE SWITCH	12/3/12	PXEC0024	AEK	KMD
K-1	1 ALL	ADDED RECEIVER BYPASS PLUMBING	12/10/12	22723	AEK	KMD
L-1	1 ALL	UPDATED DRYER OUTLET ORIENTATION	4/1/15	PXEC0088	MJD	GES



- NOTES:
- 1.) SHEET 1, UNIT LAYOUT.
 - 2.) SHEET 2, UNIT FLOW SCHEMATIC.
 - 3.) INLET CONNECTIONS: 1-1/2" FNPT X 4.
 - 4.) OUTLET CONNECTION: 1-1/2" FNPT X 1.
 - 5.) POWER CONNECTION: 1- 208, 230, OR 460 VOLT
 - 6.) WHEN PACKAGE IS INSTALLED INTO THE FACILITY, MAKE SURE THAT THE INSTALLER REFERENCES TABLE 110.26 (A) (1) FOR MINIMUM WORKING AREA.

SYMBOL LEGEND ⊖ = MINUS DRAFT ⊕ = PLUS DRAFT Ⓢ = ADDITIONAL CONTROL REQ'D Ⓜ = BRINELL HARDNESS		Drawings to conform to the current revision of the following ANSI standards: Y14.3 Multi and sectional view dgs. Y14.5M Dimensioning and tolerancing	
TOLERANCES NOT SPECIFIED .XX ± .XXX ± \angle(DEG) ±		DO NOT SCALE DRAWING FOR DIMENSIONS Sheet 1 of 2 SCALE 1:18	
CONFIDENTIAL DISCLOSURE This drawing is the property of POWEREX, INC. or the SCOTT FITZGER COMPANY and subject to return on demand. Its contents are confidential and must not be copied or submitted to outside parties for use or examination.		DRAWN BY: AEK CHECKED BY: GES APPROVED BY: ENGINEERING MFG/MKTG: DMS, DB 10/1/07 10/1/07 10/1/07 10/1/07	
MATERIAL: N/A		POWEREX 150 PRODUCTION DRIVE, HARRISON, OHIO 45030 Ph: 888-769-7979 FAX: (513) 367-3125	
PART NAME: MEDICAL SCROLL 30HP DUPLEX		DWG NO: MSED300 SIZE: D	

REV	ZONE	REVISION	DATE	ECN	NAME	CHKD
B-1	ALL	RELEASE TO PRODUCTION	10/1/07	21668	AEK	GES
C-1	ALL	UPDATED BUILD & FLOW TO CURRENT STANDARD	6/3/08	21907	AEK	GES
C-2	ALL	CORRECTED INLET DETAILS	9/25/08	21907	AEK	GES
D-1	2	UPDATED FLOW DETAILS OF ENCLOSURE	5/4/09	22127	AEK	GES
D-2	ALL	UPDATED TO POWEREX DEW POINT MONITOR	8/31/09	22127	AEK	GES
E-1	ALL	UPDATED TO POWEREX DRYER	6/24/10	22348	AEK	GES
F-1	ALL	UPDATED TO POWEREX SEH ENCLOSURE	5/31/11	22394	AEK	GES
G-1	2	ADDED BANK ISOLATION TO SEH FLOW	11/11/11	22668	AEK	KMD
H-1	2	UPDATED/ADDED FLEX LINES	11/26/12	PKEC0009	AEK	KMD
J-1	2	ADDED RESERVE PRESSURE SWITCH	12/3/12	PKEC0024	AEK	KMD
K-1	1	ADDED RECEIVER BYPASS PLUMBING	12/10/12	22723	AEK	KMD
L-1	1	UPDATED DRYER OUTLET ORIENTATION	4/1/15	PKEC0088	MJD	GES



LEGEND	
	INTAKE FILTER
	AIR FILTER
	BALL VALVE
	CARBON FILTER
	REGULATOR
	CHECK VALVE
	SEPERATOR
	FLEX JOINT
	UNION

- NOTES:
- 1.) SHEET 1, UNIT LAYOUT.
 - 2.) SHEET 2, UNIT FLOW SCHEMATIC.
 - 3.) INLET CONNECTIONS: 1-1/2" FNPT X 4.
 - 4.) OUTLET CONNECTION: 1-1/2" FNPT X 1.
 - 5.) POWER CONNECTION: 1- 208, 230, OR 460 VOLT

SYMBOL LEGEND		= ADDITIONAL CONTROL REQ'D		Drawings to conform to the current revision of the following ANSI standards:	
= MINUS DRAFT		= BRINELL HARDNESS		Y14.3 Multi and sectional view dsgs. Y14.5M Dimensioning and tolerancing	
= PLUS DRAFT					
TOLERANCES NOT SPECIFIED		AUTOCAD REL2008 LT		DO NOT SCALE DRAWING FOR DIMENSIONS	
.XX ±		INCH		Sheet 2 of 2	
.XXX ±				SCALE 1:18	
\angle (DEG) ±					
CONFIDENTIAL DISCLOSURE					
This drawing is the property of POWEREX, INC. of the SCOTT FETZER COMPANY and subject to return on demand. Its contents are confidential and must not be copied or submitted to outside parties for use or examination.					
DRAWN BY		CHECKED BY		APPROVED BY	
AEK		GES		DMS DB	
10/1/07		10/1/07		10/1/07 10/1/07	
MATERIAL N/A					
PART NAME ENCLOSED SCROLL FLOW SCHEMATIC					
DWG NO MSED300				SIZE D	