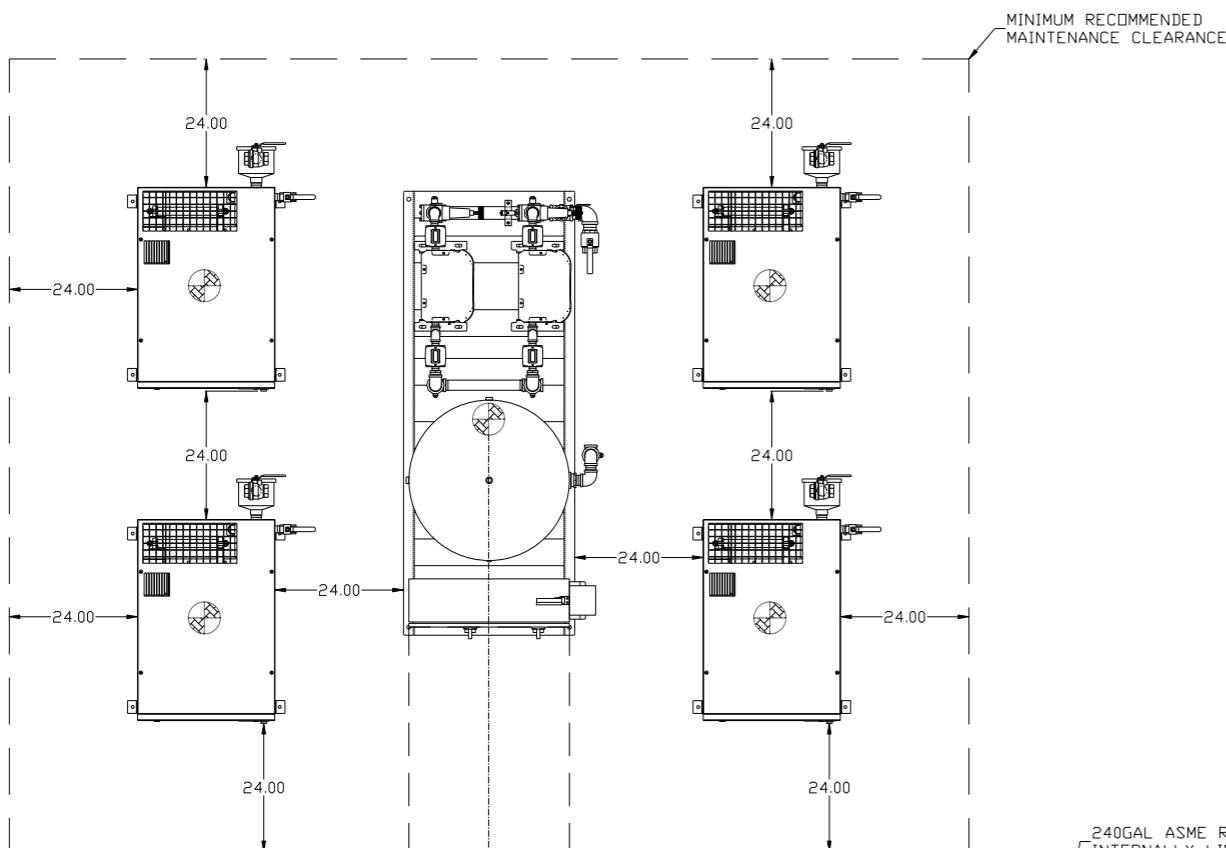
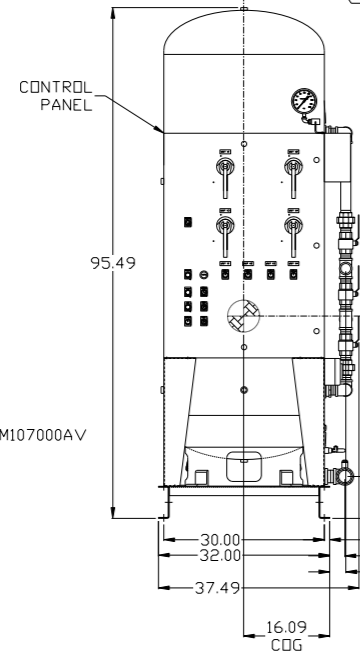


REV	ZONE	REVISION	DATE	ECN	NAME	CHKD
B-1	ALL	RELEASE TO PRODUCTION	10/1/07	21668	AEK	GES
C-1	ALL	UPDATED BUILD & FLOW TO CURRENT STANDARD	6/3/08	21906	AEK	GES
D-1	ALL	CORRECTED INLET PLUMBING & ORIENTATION	10/23/08	21907	AEK	GES
E-1	1 ALL	UPDATED TO NEW ENCLOSURE DESIGN	6/22/10	22394	AEK	GES
F-1	1 ALL	CHANGED ATC SKID CONFIG FOR BETTER SERVICEABILITY	6/24/10	22348	AEK	GES
F-2	1 ALL	ADDED CDG INFO	12/7/10	22348	AEK	GES
G-1	1 ALL	UPDATED ATC SKID FRAME	7/29/11	22546	AEK	GES
G-2	1 C4	MOVED MONITORS TO CORRECT LOCATION	8/19/11	22546	AEK	GES
H-1	2 ALL	ADDED FILTER CALL-OUTS TO DRYER CALL-OUT	1/18/13	PXEC0030	AEK	KMB
J-1	1 ALL	UPDATED/ADDED FLEX LINES	1/18/13	PXEC0030	AEK	KMB
K-1	1 ALL	UPDATED TO NANO DRYERS	8/10/17	PXEC0174	AEK	GES

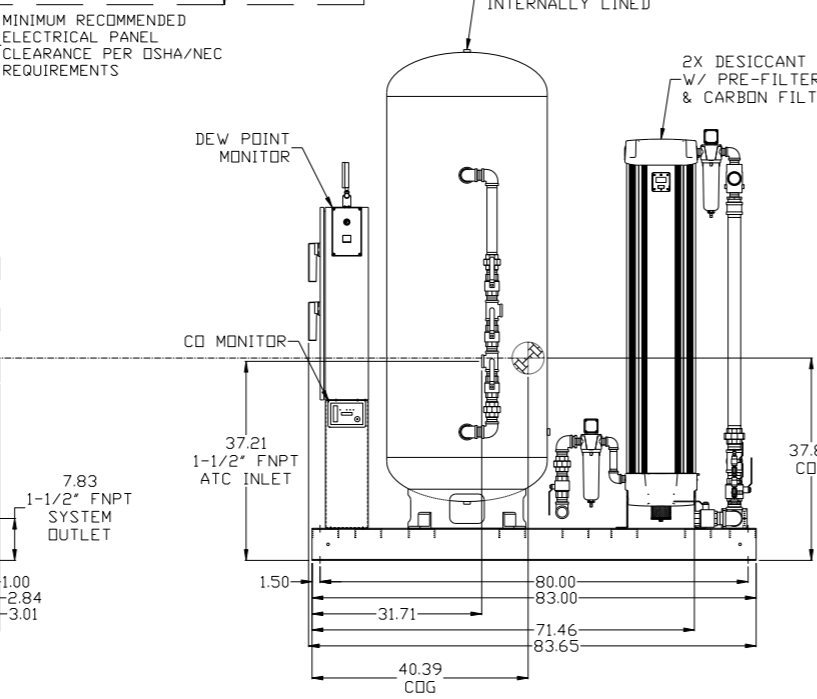


ATC/CONTROL SKID:
 TOTAL WEIGHT: 1639 LBS
 C.O.G. DIMENSIONS
 X (FRONT): -16.09"
 Y (RIGHT): 40.39"
 Z (HEIGHT): 37.82"

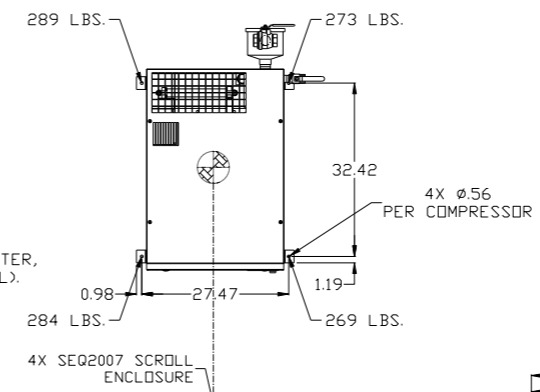
DRYER FRAME: AMI07000AV



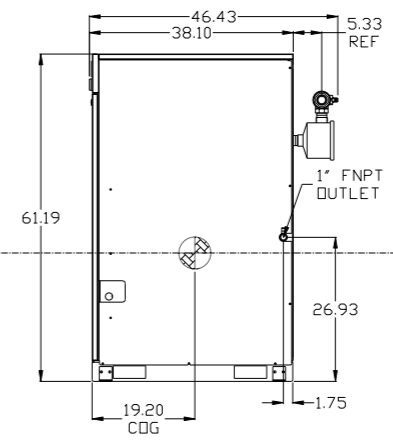
FRONT VIEW
(TANK/DRYER SKID)



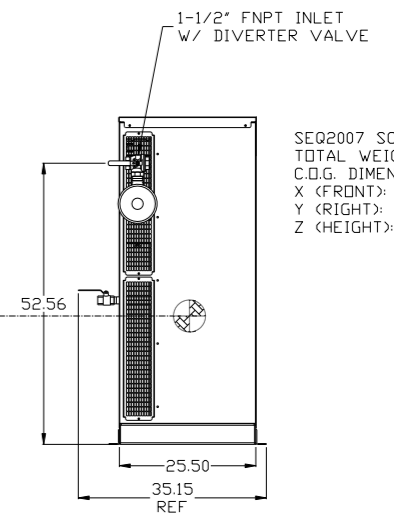
RIGHT VIEW
(TANK/DRYER SKID)



FRONT VIEW
(SCROLL ENCLOSURE)



RIGHT VIEW
(SCROLL ENCLOSURE)



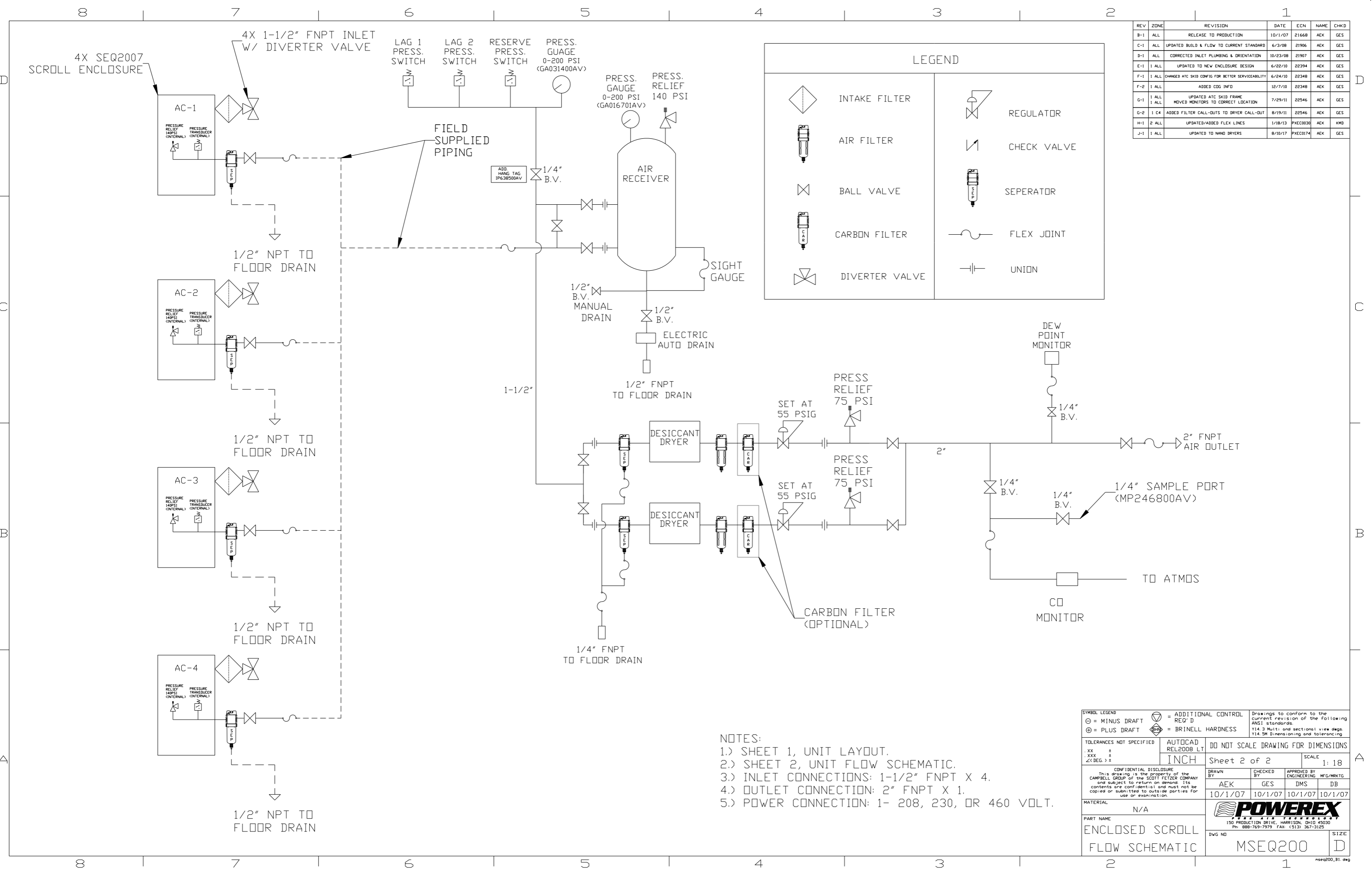
REAR VIEW
(SCROLL ENCLOSURE)

SEQ2007 SCROLL ENCLOSURE:
 TOTAL WEIGHT: 1115 LBS
 C.O.G. DIMENSIONS
 X (FRONT): 12.40"
 Y (RIGHT): 19.20"
 Z (HEIGHT): 24.00"

⊙ DENOTES CENTER OF GRAVITY

- NOTES:
 1.) SHEET 1, UNIT LAYOUT.
 2.) SHEET 2, UNIT FLOW SCHEMATIC.
 3.) INLET CONNECTIONS: 1-1/2" FNPT X 4.
 4.) OUTLET CONNECTION: 2" FNPT X 1.
 5.) POWER CONNECTION: 1- 208, 230, OR 460 VOLT.
 6.) WHEN PACKAGE IS INSTALLED INTO THE FACILITY, MAKE SURE THAT THE INSTALLER REFERENCES NEC TABLE 110.26 (A) (1) FOR MINIMUM WORKING AREA.

SYMBOL LEGEND ⊖ = MINUS DRAFT ⊕ = PLUS DRAFT ⊕ = ADDITIONAL CONTROL REQ'D BRINELL HARDNESS		Drawings to conform to the current revision of the following ANSI standards: Y14.3 Multi and sectional view dgs. Y14.5M Dimensioning and tolerancing	
TOLERANCES NOT SPECIFIED .XX ± .XXX ± \angle(DEG) ±		DO NOT SCALE DRAWING FOR DIMENSIONS Sheet 1 of 2 SCALE: 1:18	
AUTOCAD REL2008 LT INCH		DRAWN BY: AEK CHECKED BY: GES APPROVED BY: DMS, DB 10/1/07 10/1/07 10/1/07 10/1/07	
CONFIDENTIAL DISCLOSURE This drawing is the property of the CAMPBELL GROUP OF THE SCOTT FETZER COMPANY and subject to return on demand. Its contents are confidential and must not be copied or submitted to outside parties for use or examination.		POWEREX 150 PRODUCTION DRIVE, HARRISON, OHIO 45030 Ph: 888-769-7979 Fax: (513) 367-3125	
MATERIAL: N/A		PART NAME: MEDICAL SCROLL 20HP QUADPLEX DWG NO: MSEQ200 SIZE: D	



REV	ZONE	REVISION	DATE	ECN	NAME	CHKD
B-1	ALL	RELEASE TO PRODUCTION	10/1/07	21668	AEK	GES
C-1	ALL	UPDATED BUILD & FLOW TO CURRENT STANDARD	6/3/08	21906	AEK	GES
D-1	ALL	CORRECTED INLET PLUMBING & ORIENTATION	10/23/08	21907	AEK	GES
E-1	1 ALL	UPDATED TO NEW ENCLOSURE DESIGN	6/22/10	22394	AEK	GES
F-1	1 ALL	CHANGED ATC SKID CONFIG FOR BETTER SERVICEABILITY	6/24/10	22348	AEK	GES
F-2	1 ALL	ADDED CDG INFO	12/7/10	22348	AEK	GES
G-1	1 ALL	UPDATED ATC SKID FRAME	7/29/11	22546	AEK	GES
G-2	1 C4	ADDED FILTER CALL-OUTS TO DRYER CALL-OUT	8/19/11	22546	AEK	GES
H-1	2 ALL	UPDATED/ADDED FLEX LINES	1/18/13	PXEC0030	AEK	KMB
J-1	1 ALL	UPDATED TO HANG DRYERS	8/10/17	PXEC0174	AEK	GES

LEGEND

	INTAKE FILTER		REGULATOR
	AIR FILTER		CHECK VALVE
	BALL VALVE		SEPERATOR
	CARBON FILTER		FLEX JOINT
	DIVERTER VALVE		UNION

- NOTES:
- 1.) SHEET 1, UNIT LAYOUT.
 - 2.) SHEET 2, UNIT FLOW SCHEMATIC.
 - 3.) INLET CONNECTIONS: 1-1/2" FNPT X 4.
 - 4.) OUTLET CONNECTION: 2" FNPT X 1.
 - 5.) POWER CONNECTION: 1- 208, 230, OR 460 VOLT.

SYMBOL LEGEND		AUTOCAD REL2008 LT		DO NOT SCALE DRAWING FOR DIMENSIONS	
⊖	MINUS DRAFT	INCH	SCALE	Sheet 2 of 2	1:18
⊕	PLUS DRAFT	Drawings to conform to the current revision of the following ANSI standards: Y14.3 Multi and sectional view dsgs. Y14.5M Dimensioning and tolerancing			
⊕	BRINELL HARDNESS	CONFIDENTIAL DISCLOSURE This drawing is the property of the CAMPBELL GROUP OF THE SCOTT FETZER COMPANY and subject to return on demand. Its contents are confidential and must not be copied or submitted to outside parties for use or examination.			
TOLERANCES NOT SPECIFIED		DRAWN BY		CHECKED BY	
.XX ±		AEK		GES	
.XXX ±		10/1/07		10/1/07	
<< DEG >> ±		10/1/07		10/1/07	
MATERIAL		APPROVED BY		MFG/MRKTG	
N/A		AEK		DMS DB	
PART NAME		10/1/07		10/1/07	
ENCLOSED SCROLL		10/1/07		10/1/07	
FLOW SCHEMATIC		POWEREX		150 PRODUCTION DRIVE, HARRISON, OHIO 45030 Ph 888-769-7979 FAX (513) 367-3125	
DWG NO		MSEQ200		SIZE	
				D	