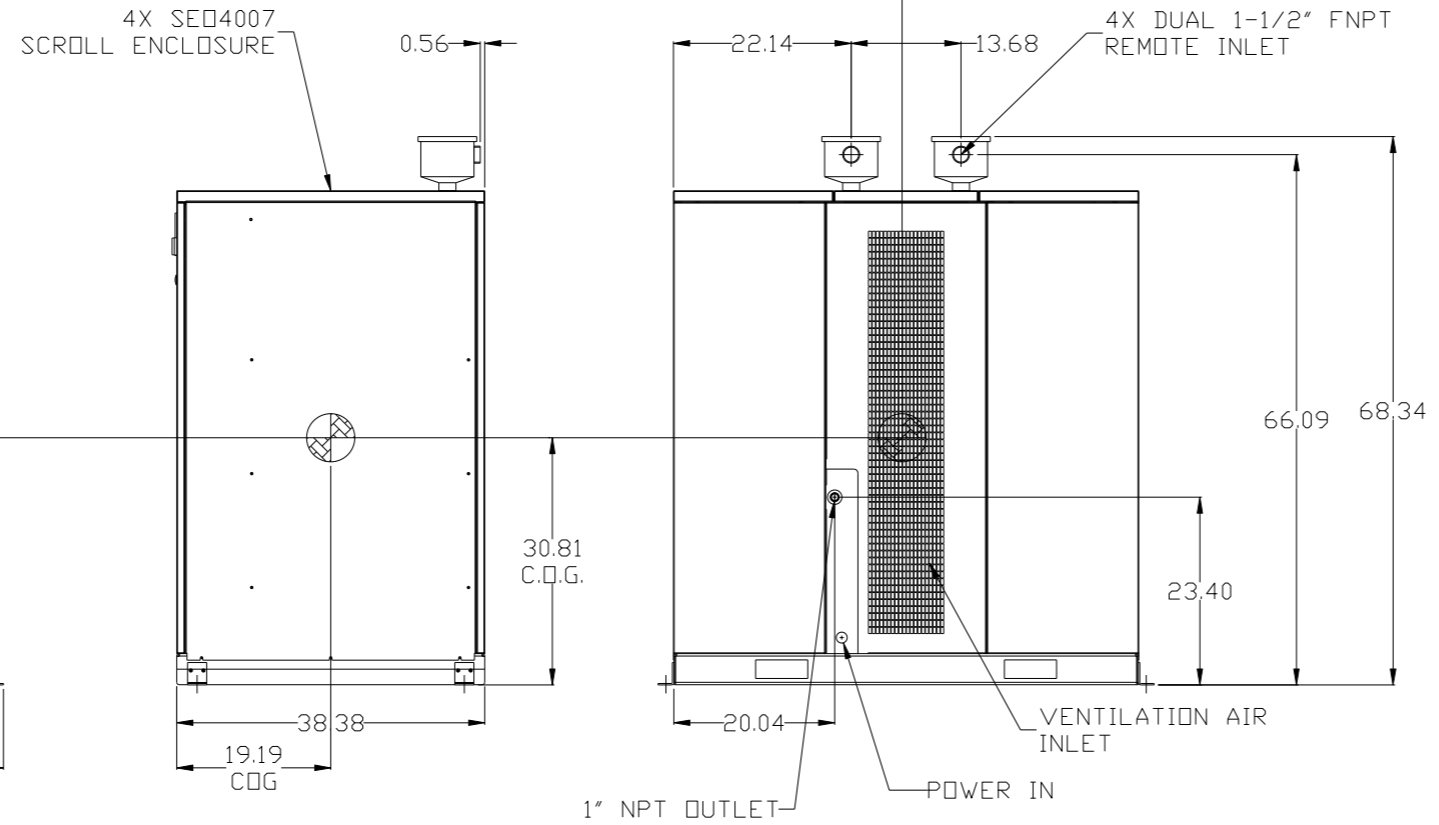
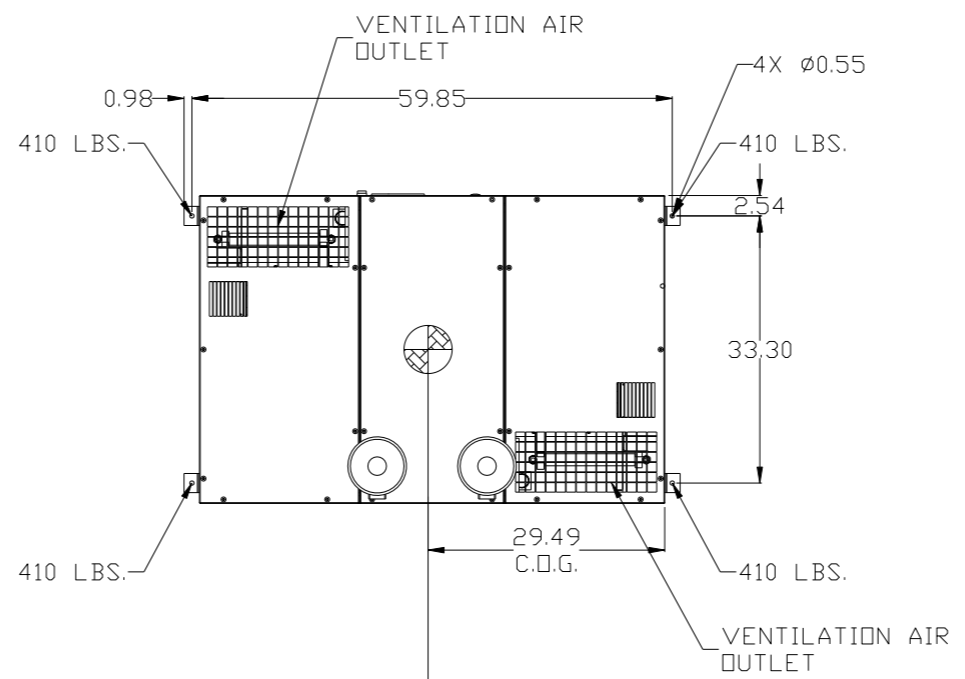


8 7 6 5 4 3 2 1

REV	ZONE	REVISION	DATE	ECN	NAME	CHKD
A-1	ALL	RELEASE FOR SUBMITTAL	10/10/07	21668	AEK	GES
B-1	ALL	UPDATED BUILD & FLOW TO CURRENT STANDARD	6/9/08	21907	AEK	GES
C-1	ALL	CORRECTED INLET DETAILS	9/25/08	21907	AEK	GES
D-1	1 ALL 2 ALL	UPDATED PANEL AND MONITORS UPDATED FLOW TO CURRENT PRODUCTION	6/24/10	22348	AEK	GES
E-1	ALL	CORRECTED OUTLET PLUMBING TO 2-1/2" NPT	1/12/11	22546	AEK	GES
F-1	ALL	UPDATED TO POWEREX SED ENCLOSURE	5/31/11	22394	AEK	GES
G-1	1 B6	ADDED DRYER/FILTER CALL-OUT	8/19/11	22546	AEK	GES
H-1	ALL	ADDED SHEETS 3 THRU 5 ADDED CENTER OF GRAVITY INFORMATION RENUMBERED SHEETS	6/15/12	22723	AEK	GES
J-1	2,4 ALL	UPDATED TO HAND DRYERS	9/8/17	PXEC0174	AEK	GES



SED4007 SCROLL ENCLOSURE:  
 TOTAL WEIGHT: 2000 LBS  
 C.O.G. DIMENSIONS  
 X (FRONT): -29.49"  
 Y (RIGHT): 19.19"  
 Z (HEIGHT): 30.81"

- NOTES:
- 1) SHEET 1 - SED4007 SCROLL ENCLOSURE LAYOUT  
 SHEET 2 - RECEIVER LAYOUT  
 SHEET 3 - AIR TREATMENT LAYOUT  
 SHEET 4 - PLAN VIEW  
 SHEET 5 - FLOW SCHEMATIC
  - 2) INLET CONNECTIONS: 1-1/2" FNPT X 8.
  - 3) OUTLET CONNECTION: 2-1/2" FNPT X 1.
  - 4) POWER CONNECTION: 1- 208, 230, OR 460 VOLT.
  - 5) WHEN PACKAGE IS INSTALLED INTO THE FACILITY, MAKE SURE THAT THE INSTALLER REFERENCES TABLE 110.26 (A) (1) FOR MINIMUM WORKING AREA.

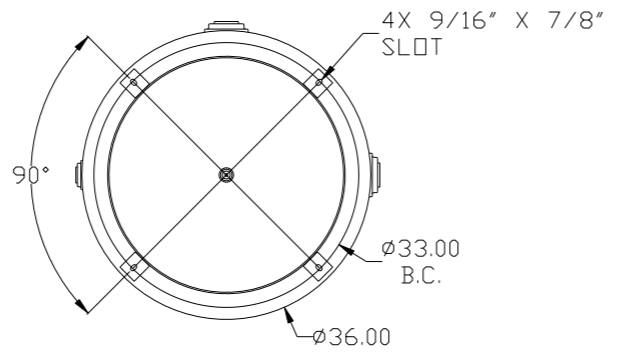
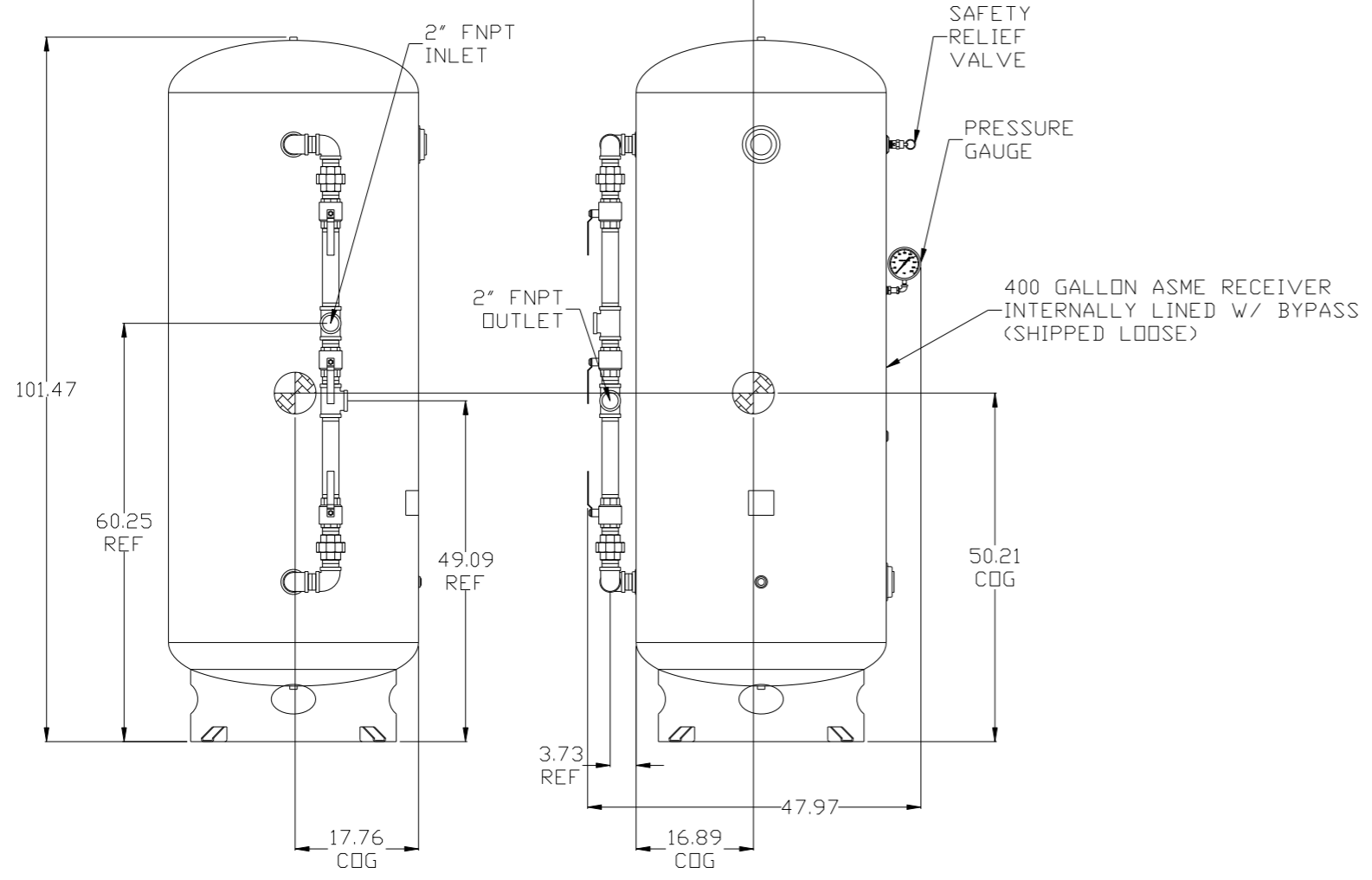
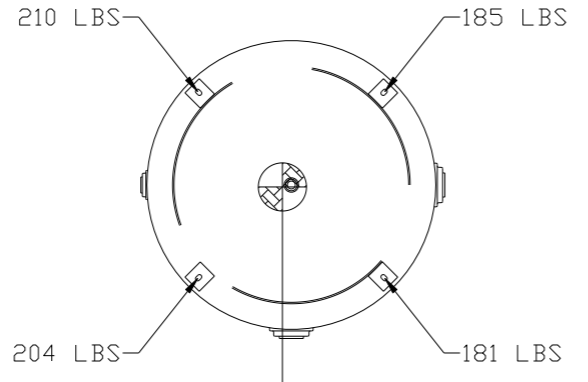
⊙ INDICATES CENTER OF GRAVITY

SYMBOL LEGEND		AUTOCAD REL2008 LT		DO NOT SCALE DRAWING FOR DIMENSIONS	
⊖	MINUS DRAFT	⊕	PLUS DRAFT	Sheet 1 of 5	
⊙	ADDITIONAL CONTROL REQ'D	⊖	BRINELL HARDNESS	SCALE 1:12	
TOLERANCES NOT SPECIFIED		INCH		DRAWN BY: AEK	
CONFIDENTIAL DISCLOSURE		DRAWN BY: AEK		CHECKED BY: GES	
This drawing is the property of POWEREX, INC. of the SCOTT FETZER COMPANY and subject to return on demand. Its contents are confidential and must not be copied or submitted to outside parties for use or examination.		APPROVED BY: DMS		APPROVED BY: DB	
MATERIAL: N/A		10/12/07		10/12/07	
PART NAME: MEDICAL SCROLL 40HP QUADPLEX		10/12/07		10/10/07	
DWG NO: MSEQ400		SIZE: D		1	

8 7 6 5 4 3 2 1

REV	ZONE	REVISION	DATE	ECN	NAME	CHKD
H-1	ALL	ADDED SHEETS 3 THRU 5				
ALL	ALL	ADDED CENTER OF GRAVITY INFORMATION	6/15/12	22723	AEK	GES
ALL	ALL	RENUMBERED SHEETS				
J-1	3,4	UPDATED TO HAND DRYERS	9/8/17	PXEC0174	AEK	GES

8 7 6 5 4 3 2 1



400GAL RECEIVER:  
TOTAL WEIGHT: 780 LBS  
C.D.G. DIMENSIONS  
X (FRONT): 16.89"  
Y (RIGHT): -17.76"  
Z (HEIGHT): 50.21"

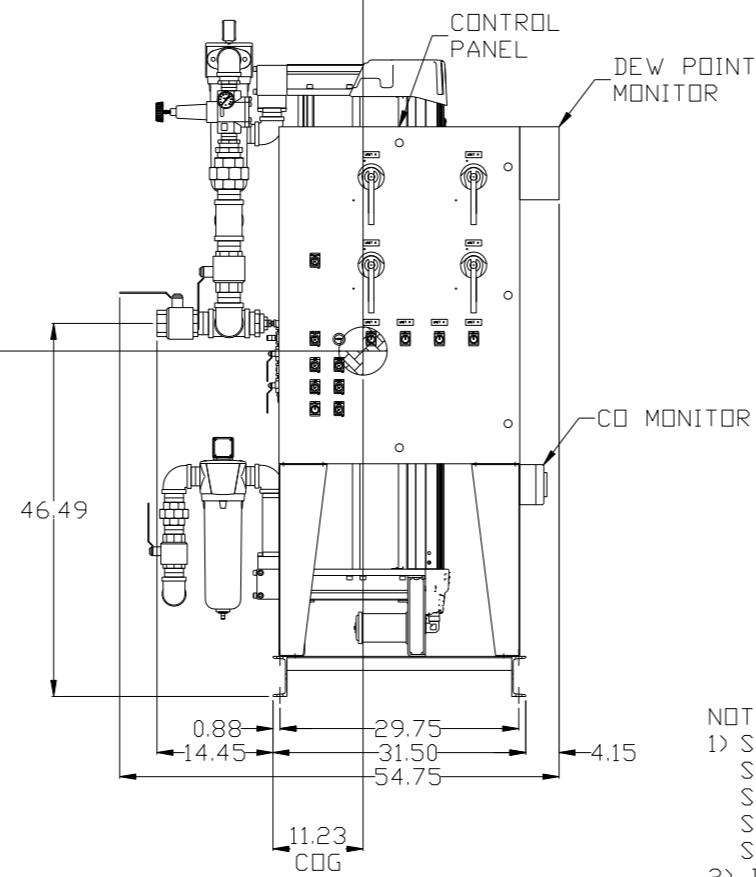
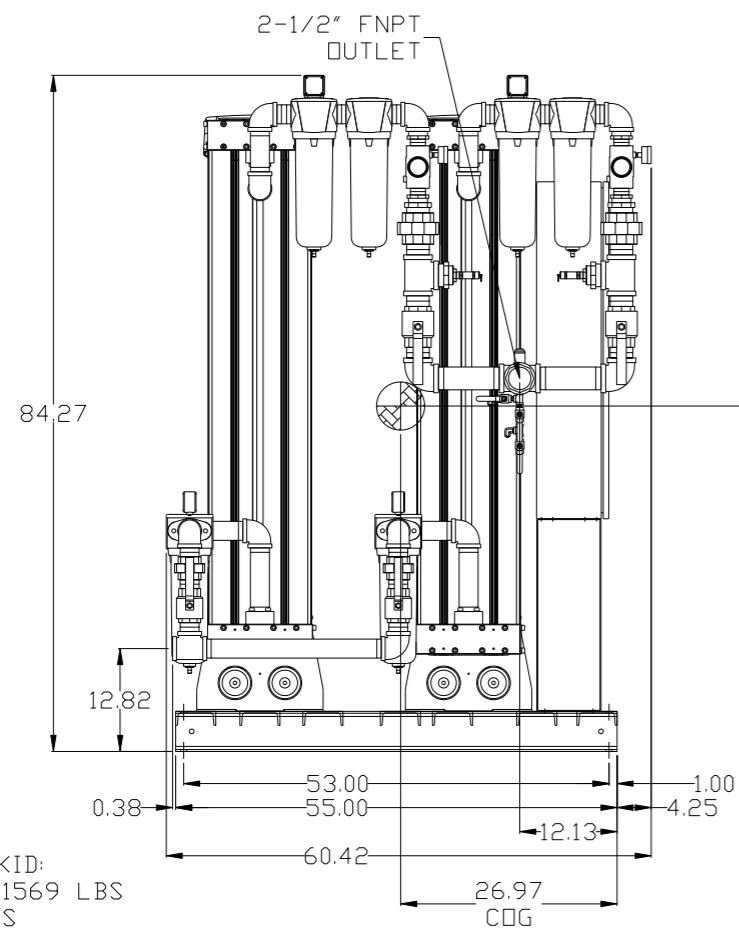
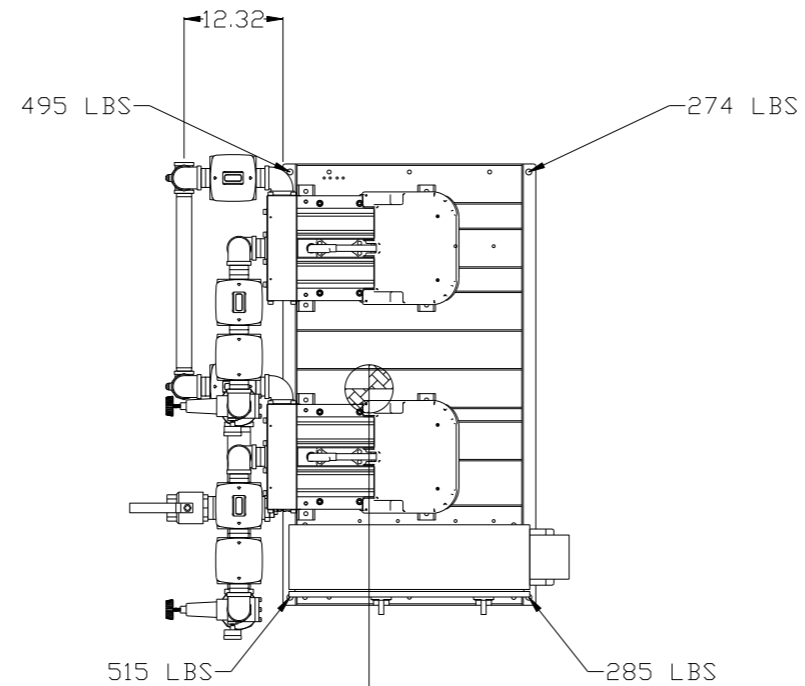
INDICATES CENTER OF GRAVITY

- NOTES:
- 1) SHEET 1 - SEQ4007 SCROLL ENCLOSURE LAYOUT  
SHEET 2 - RECEIVER LAYOUT  
SHEET 3 - AIR TREATMENT LAYOUT  
SHEET 4 - PLAN VIEW  
SHEET 5 - FLOW SCHEMATIC
  - 2) INLET CONNECTIONS: 1-1/2" FNPT X 8.
  - 3) OUTLET CONNECTION: 2-1/2" FNPT X 1.
  - 4) POWER CONNECTION: 1- 208, 230, OR 460 VOLT.
  - 5) WHEN PACKAGE IS INSTALLED INTO THE FACILITY, MAKE SURE THAT THE INSTALLER REFERENCES TABLE 110.26 (A) (1) FOR MINIMUM WORKING AREA.

SYMBOL LEGEND		AUTOCAD REL2008 LT		DO NOT SCALE DRAWING FOR DIMENSIONS		
	= MINUS DRAFT		= ADDITIONAL CONTROL REQ'D	Drawings to conform to the current revision of the following ANSI standards:		
	= PLUS DRAFT		= BRINELL HARDNESS	Y14.3 Multi and sectional view dgs. Y14.5M Dimensioning and tolerancing		
TOLERANCES NOT SPECIFIED	.XX ±	INCH	SCALE	Sheet 2 of 5 1:12		
CONFIDENTIAL DISCLOSURE This drawing is the property of POWEREX, INC. of the SCOTT FEITZER COMPANY and subject to return on demand. Its contents are confidential and must not be copied or submitted to outside parties for use or examination.		DRAWN BY	CHECKED BY	APPROVED BY	MFG/MKTG	
		AEK	GES	DMS	JJ	
		6/15/17	6/15/17	6/15/17	6/15/17	
MATERIAL		N/A				
PART NAME		MEDICAL SCROLL		SIZE		
		40HP QUADPLEX		D		
		DWG NO		MSEQ400		
				MSEQ400.dwg		

8 7 6 5 4 3 2 1

REV	ZONE	REVISION	DATE	ECN	NAME	CHKD
H-1	ALL	ADDED SHEETS 3 THRU 5				
	ALL	ADDED CENTER OF GRAVITY INFORMATION	6/15/12	22723	AEK	GES
	ALL	RENUMBERED SHEETS				
J-1	3,4	UPDATED TO HAND DRYERS	9/8/17	PXEC0174	AEK	GES



ATC/CONTROL SKID:  
TOTAL WEIGHT: 1569 LBS  
C.D.G. DIMENSIONS  
X (FRONT): 11.23"  
Y (RIGHT): -26.97"  
Z (HEIGHT): 43.05"

NOTES:

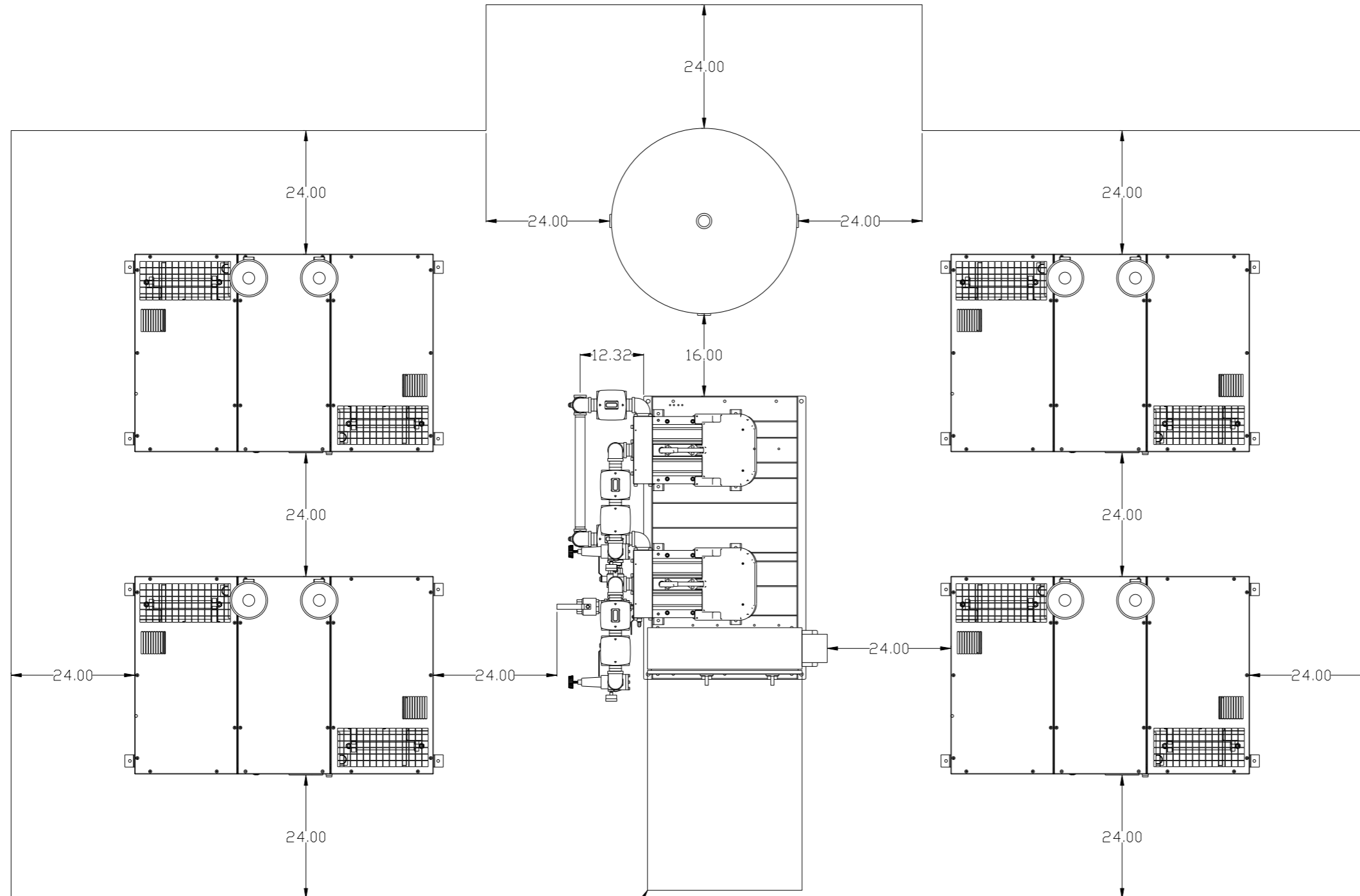
- 1) SHEET 1 - SEQ4007 SCROLL ENCLOSURE LAYOUT  
SHEET 2 - RECEIVER LAYOUT  
SHEET 3 - AIR TREATMENT LAYOUT  
SHEET 4 - PLAN VIEW  
SHEET 5 - FLOW SCHEMATIC
- 2) INLET CONNECTIONS: 1-1/2" FNPT X 8.
- 3) OUTLET CONNECTION: 2-1/2" FNPT X 1.
- 4) POWER CONNECTION: 1- 208, 230, OR 460 VOLT.
- 5) WHEN PACKAGE IS INSTALLED INTO THE FACILITY, MAKE SURE THAT THE INSTALLER REFERENCES TABLE 110.26 (A) (1) FOR MINIMUM WORKING AREA.

INDICATES CENTER OF GRAVITY

AIR TREATMENT SKID WEIGHT - 1867 LBS

SYMBOL LEGEND		= ADDITIONAL CONTROL REQ'D		Drawings to conform to the current revision of the following ANSI standards	
	= MINUS DRAFT		= BRINELL HARDNESS	Y14.3 Multi and sectional view dings Y14.5M Dimensioning and tolerancing	
	= PLUS DRAFT			DO NOT SCALE DRAWING FOR DIMENSIONS	
TOLERANCES NOT SPECIFIED		AUTOCAD REL2008 LT		Sheet 3 of 5	
.XX ±		INCH		SCALE 1:12	
.XXX ±					
<< DEG > ±					
CONFIDENTIAL DISCLOSURE This drawing is the property of POWEREX, INC. of the SCOTT FETZER COMPANY and subject to return on demand. Its contents are confidential and must not be copied or submitted to outside parties for use or examination.					
DRAWN BY		CHECKED BY	ENGINEERING	MFG/MKTG	
AEK		GES	DMS	JJ	
6/15/17		6/15/17	6/15/17	6/15/17	
MATERIAL		N/A			
PART NAME		MEDICAL SCROLL 40HP QUADPLEX			
DWG NO		MSEQ400		SIZE D	

REV	ZONE	REVISION	DATE	ECN	NAME	CHKD
H-1	ALL	ADDED SHEETS 3 THRU 5	6/15/12	22723	AEK	GES
	ALL	ADDED CENTER OF GRAVITY INFORMATION				
	ALL	RENUMBERED SHEETS				
J-1	3,4	UPDATED TO HAND DRYERS	9/8/17	PXEC0174	AEK	GES



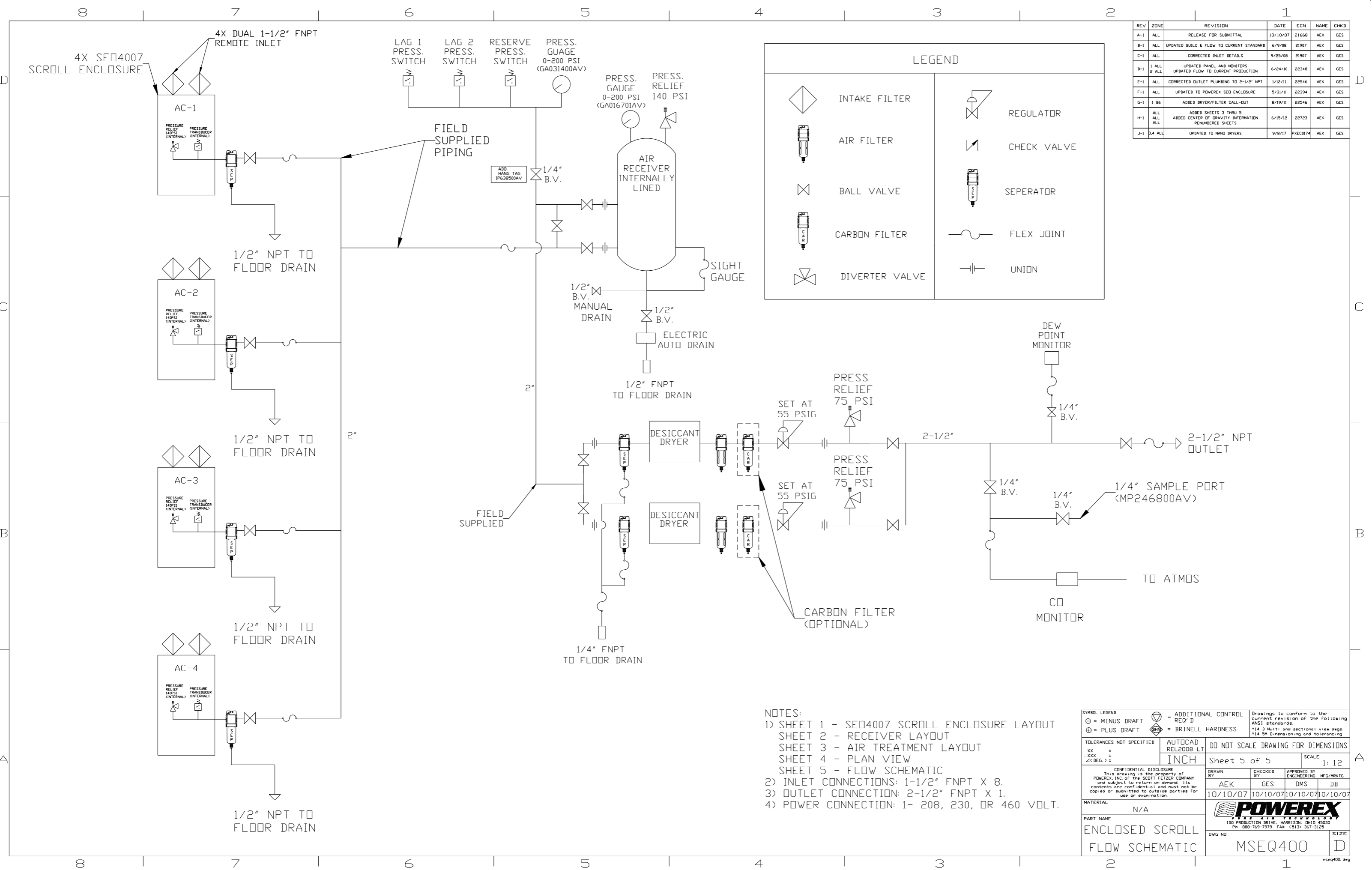
MINIMUM RECOMMENDED  
MAINTENANCE CLEARANCE

MINIMUM RECOMMENDED  
ELECTRICAL PANEL  
CLEARANCE PER OSHA/NEC  
REQUIREMENTS

NOTES:

- 1) SHEET 1 - SEQ4007 SCROLL ENCLOSURE LAYOUT  
SHEET 2 - RECEIVER LAYOUT  
SHEET 3 - AIR TREATMENT LAYOUT  
SHEET 4 - PLAN VIEW  
SHEET 5 - FLOW SCHEMATIC
- 2) INLET CONNECTIONS: 1-1/2" FNPT X 8.
- 3) OUTLET CONNECTION: 2-1/2" FNPT X 1.
- 4) POWER CONNECTION: 1- 208, 230, OR 460 VOLT.
- 5) WHEN PACKAGE IS INSTALLED INTO THE FACILITY, MAKE SURE THAT THE INSTALLER REFERENCES TABLE 110.26 (A) (1) FOR MINIMUM WORKING AREA.

SYMBOL LEGEND		= ADDITIONAL CONTROL REQ'D		Drawings to conform to the current revision of the following ANSI standards:	
⊖	MINUS DRAFT	⊕	PLUS DRAFT	⊖	BRINELL HARDNESS
TOLERANCES NOT SPECIFIED		AUTOCAD REL2008 LT		DO NOT SCALE DRAWING FOR DIMENSIONS	
.XX ±		INCH		Sheet 4 of 5	SCALE 1:12
.XXX ±					
<<DEG>> ±					
CONFIDENTIAL DISCLOSURE This drawing is the property of POWEREX, INC. of the SCOTT FETZER COMPANY and subject to return on demand. Its contents are confidential and must not be copied or submitted to outside parties for use or examination.		DRAWN BY AEK	CHECKED BY GES	APPROVED BY ENGINEERING DMS	MFG/MKTG JJ
MATERIAL N/A		6/15/17	6/15/17	6/15/17	6/15/17
PART NAME MEDICAL SCROLL 40HP QUADPLEX		 150 PRODUCTION DRIVE, HARRISON, OHIO 45030 Ph: 888-769-7979 FAX: (513) 367-3125		DWG NO MSEQ400	SIZE D



REV	ZONE	REVISION	DATE	ECN	NAME	CHKD
A-1	ALL	RELEASE FOR SUBMITTAL	10/10/07	21668	AEK	GES
B-1	ALL	UPDATED BUILD & FLOW TO CURRENT STANDARD	6/9/08	21907	AEK	GES
C-1	ALL	CORRECTED INLET DETAILS	9/25/08	21907	AEK	GES
D-1	1 ALL 2 ALL	UPDATED PANEL AND MONITORS UPDATED FLOW TO CURRENT PRODUCTION	6/24/10	22348	AEK	GES
E-1	ALL	CORRECTED OUTLET PLUMBING TO 2-1/2" NPT	1/12/11	22546	AEK	GES
F-1	ALL	UPDATED TO POWEREX SED ENCLOSURE	5/31/11	22394	AEK	GES
G-1	1 B6	ADDED DRYER/FILTER CALL-OUT	8/19/11	22546	AEK	GES
H-1	ALL	ADDED SHEETS 3 THRU 5	6/15/12	22723	AEK	GES
J-1	2,4 ALL	UPDATED TO HAND DRYERS	9/8/17	PXEC0174	AEK	GES

### LEGEND

	INTAKE FILTER		REGULATOR
	AIR FILTER		CHECK VALVE
	BALL VALVE		SEPERATOR
	CARBON FILTER		FLEX JOINT
	DIVERTER VALVE		UNION

- NOTES:
- 1) SHEET 1 - SEQ4007 SCROLL ENCLOSURE LAYOUT  
SHEET 2 - RECEIVER LAYOUT  
SHEET 3 - AIR TREATMENT LAYOUT  
SHEET 4 - PLAN VIEW  
SHEET 5 - FLOW SCHEMATIC
  - 2) INLET CONNECTIONS: 1-1/2" FNPT X 8.
  - 3) OUTLET CONNECTION: 2-1/2" FNPT X 1.
  - 4) POWER CONNECTION: 1- 208, 230, OR 460 VOLT.

SYMBOL LEGEND		AUTOCAD REL2008 LT		DO NOT SCALE DRAWING FOR DIMENSIONS	
⊖	MINUS DRAFT	+	PLUS DRAFT	Sheet 5 of 5	
⊕	MINUS DRAFT	+	PLUS DRAFT	SCALE 1:12	
⊖	MINUS DRAFT	+	PLUS DRAFT	INCH	
TOLERANCES NOT SPECIFIED		AUTOCAD REL2008 LT		DO NOT SCALE DRAWING FOR DIMENSIONS	
.XX	±			SCALE 1:12	
.XXX	±				
<<DEG>>	±				
CONFIDENTIAL DISCLOSURE This drawing is the property of POWEREX, INC. or the SCOTT FETZER COMPANY and subject to return on demand. Its contents are confidential and must not be copied or submitted to outside parties for use or examination.					
DRAWN BY		CHECKED BY		APPROVED BY	
AEK		GES		DMS DB	
10/10/07		10/10/07		10/10/07	
MATERIAL		N/A		 150 PRODUCTION DRIVE, HARRISON, OHIO 45030 Ph 888-769-7979 FAX (513) 367-3125	
PART NAME		ENCLOSED SCROLL		SIZE	
		FLOW SCHEMATIC		D	
		DWG NO		MSEQ400	