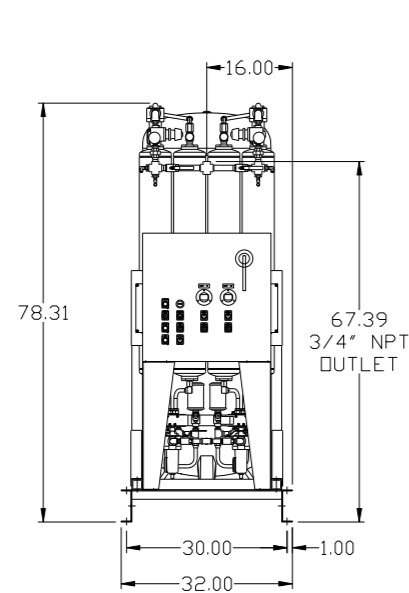
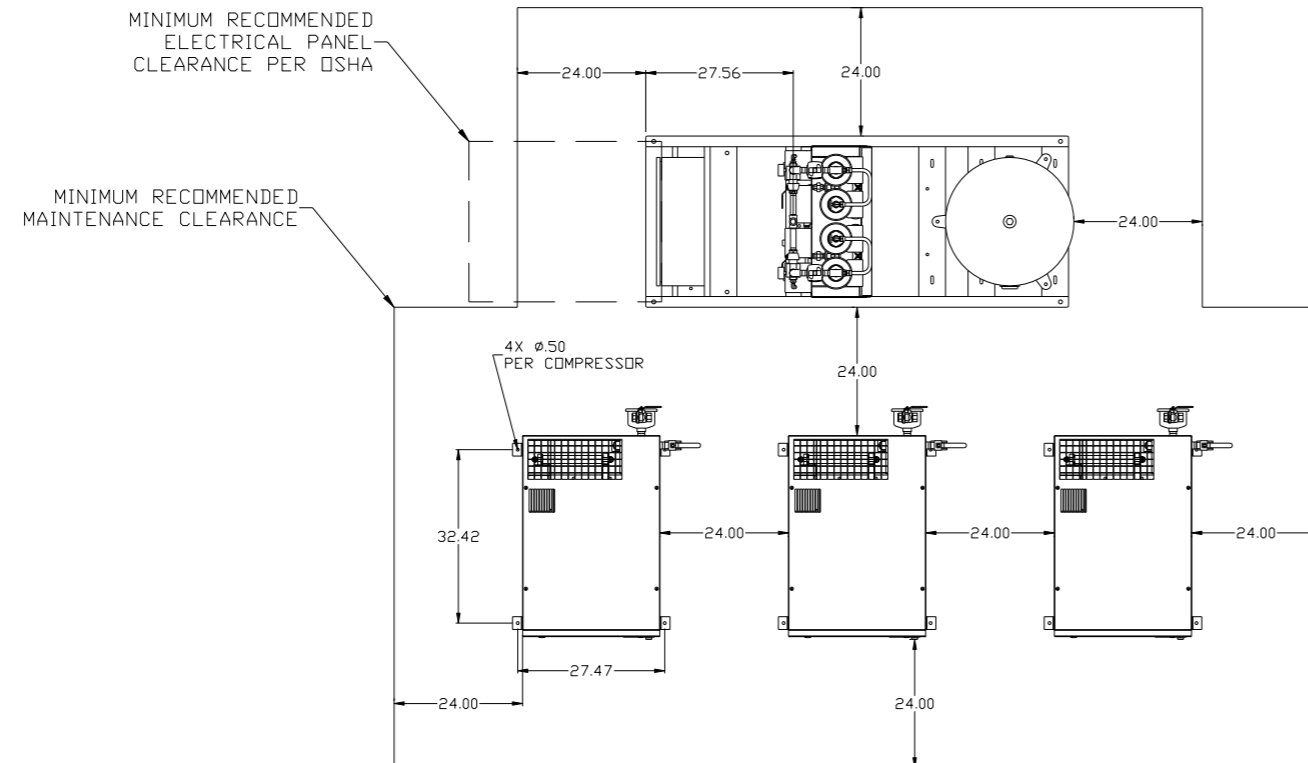
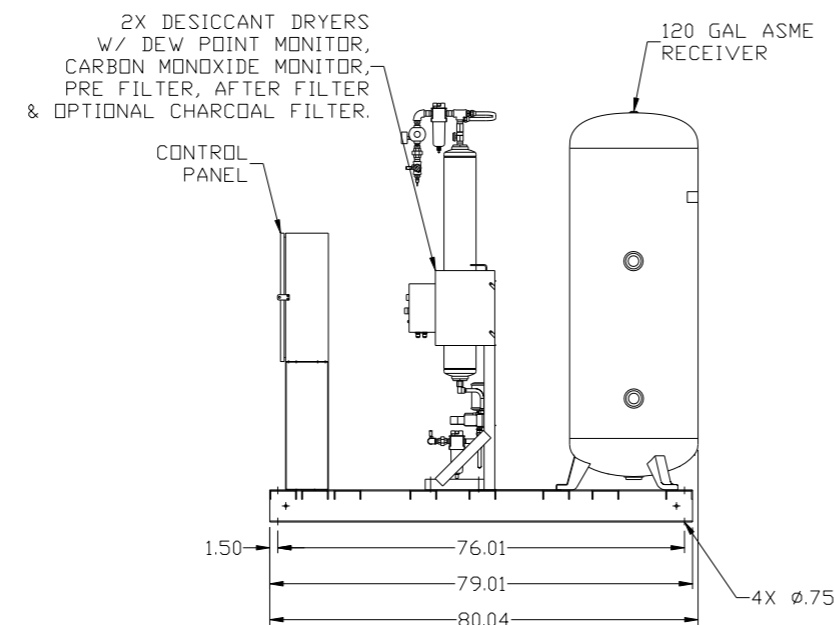


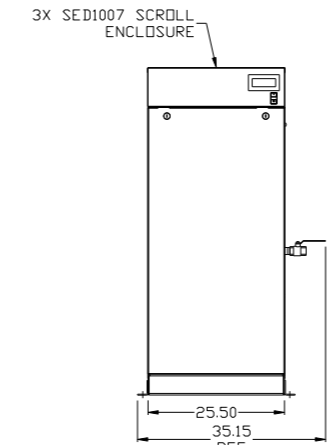
REV	ZONE	REVISION	DATE	ECN	NAME	CHKD
B-1	ALL	RELEASE TO PRODUCTION	9/24/07	21668	AEK	GES
C-1	ALL	UPDATED BUILD & FLOW TO CURRENT STANDARD	6/3/08	21907	AEK	GES
C-2	ALL	CORRECTED AIR INLET ORIENTATION PLUMBING	10/23/08	21907	AEK	GES
D-1	ALL	UPDATED TO NEW POWEREX DRYER	8/19/09	22120	AEK	GES
E-1	ALL	UPDATED TO NEW ENCLOSURE DESIGN	6/21/10	22394	AEK	GES



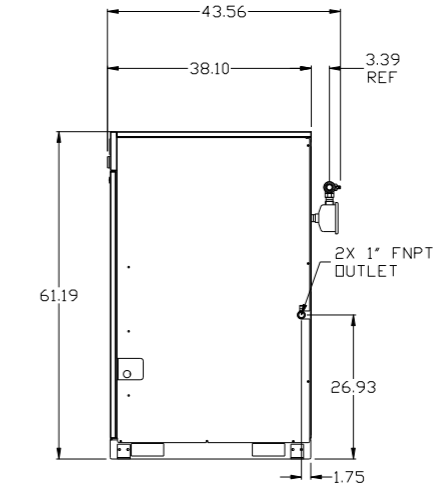
FRONT VIEW  
(TANK/DRYER SKID)



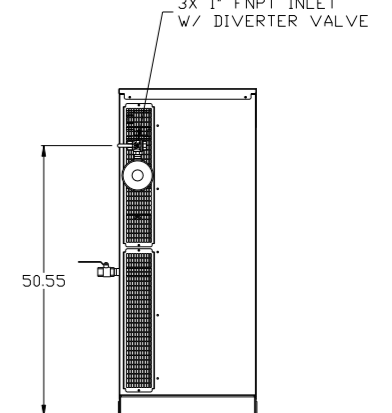
RIGHT VIEW  
(TANK/DRYER SKID)



FRONT VIEW  
(SCROLL ENCLOSURE)



RIGHT VIEW  
(SCROLL ENCLOSURE)



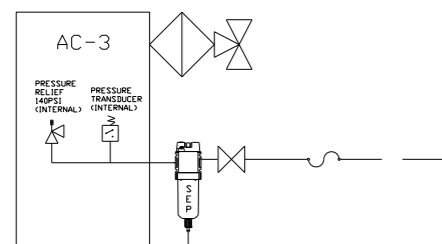
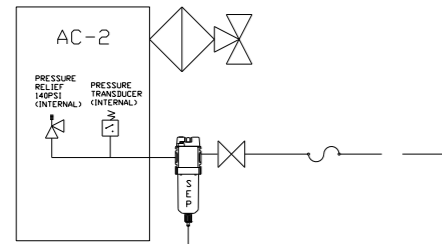
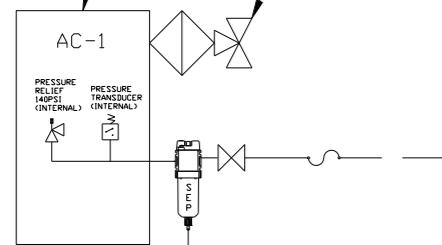
REAR VIEW  
(SCROLL ENCLOSURE)

- NOTES:
- 1.) SHEET 1, UNIT LAYOUT.
  - 2.) SHEET 2, UNIT FLOW SCHEMATIC.
  - 3.) INLET CONNECTIONS: 1" FNPT X 3.
  - 4.) OUTLET CONNECTION: 3/4" FNPT X 1.
  - 5.) POWER CONNECTION: 1- 208, 230, OR 460 VOLT
  - 6.) WHEN PACKAGE IS INSTALLED INTO THE FACILITY, MAKE SURE THAT THE INSTALLER REFERENCES TABLE 110.26 (A) (1) FOR MINIMUM WORKING AREA.

SYMBOL LEGEND		= ADDITIONAL CONTROL REQ'D		Drawings to conform to the current revision of the following ANSI standards:	
⊖	MINUS DRAFT	⊕	PLUS DRAFT	⊖	BRINELL HARDNESS
TOLERANCES NOT SPECIFIED		AUTOCAD REL2008 LT		DO NOT SCALE DRAWING FOR DIMENSIONS	
.XX ±		INCH		Sheet 1 of 2	SCALE 1:18
CONFIDENTIAL DISCLOSURE: This drawing is the property of the CAMPBELL GROUP of the SCOTT FETZER COMPANY and subject to return on demand. Its contents are confidential and must not be copied or submitted to outside parties for use or examination.					
DRAWN BY	CHECKED BY	ENGINEERING	MFG/MKTG		
AEK	GES	DMS	DB		
DATE	DATE	DATE	DATE		
9/24/07	9/24/07	9/24/07	9/24/07		
MATERIAL		N/A			
PART NAME		MEDICAL SCROLL 10HP TRIPLEX			
DWG NO		MSET100		SIZE D	

REV	ZONE	REVISION	DATE	ECN	NAME	CHKD
B-1	ALL	RELEASE TO PRODUCTION	9/24/07	21668	AEK	GES
C-1	ALL	UPDATED BUILD & FLOW TO CURRENT STANDARD	6/3/08	21907	AEK	GES
C-2	ALL	CORRECTED AIR INLET ORIENTATION PLUMBING	10/23/08	21907	AEK	GES
D-1	ALL	UPDATED TO NEW POWEREX DRYER	8/19/09	22120	AEK	GES
E-1	1 ALL	UPDATED TO NEW ENCLOSURE DESIGN	6/21/10	22394	AEK	GES

3X SED1007 ENCLOSED SCROLL  
3X 1" FNPT INLET W/ DIVERTER VALVE



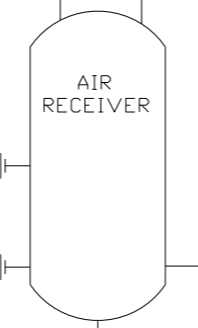
1/2" NPT TO FLOOR DRAIN

1/2" NPT TO FLOOR DRAIN

1/2" NPT TO FLOOR DRAIN

FIELD SUPPLIED

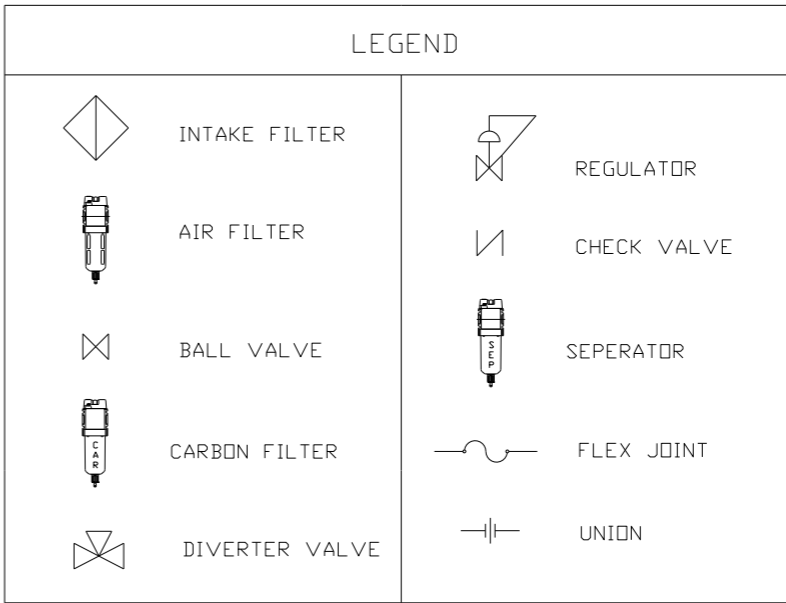
PRESS. GAUGE 0-200 PSI (GA016701AV)  
PRESS. RELIEF 140 PSI



1/2" B.V. MANUAL DRAIN

ELECTRIC AUTO DRAIN

1/2" FNPT TO FLOOR DRAIN



3/4"



SET AT 55 PSIG

SET AT 55 PSIG

PRESS RELIEF 75 PSI

PRESS RELIEF 75 PSI

3/4"

DEW POINT MONITOR

1/4" B.V.

3/4" FNPT AIR OUTLET

1/4" B.V.

1/4" SAMPLE PORT (MP246800AV)

TO ATMOS

CO MONITOR

1/4" FNPT TO FLOOR DRAIN

- NOTES:
- 1.) SHEET 1, UNIT LAYOUT.
  - 2.) SHEET 2, UNIT FLOW SCHEMATIC.
  - 3.) INLET CONNECTIONS: 1" FNPT X 3.
  - 4.) OUTLET CONNECTION: 3/4" FNPT X 1.
  - 5.) POWER CONNECTION: 1- 208, 230, OR 460 VOLT

SYMBOL LEGEND		= ADDITIONAL CONTROL REQ'D		Drawings to conform to the current revision of the following ANSI standards:	
⊖ = MINUS DRAFT		= BRINELL HARDNESS		Y14.3 Multi and sectional view dgs.	
⊕ = PLUS DRAFT				Y14.5M Dimensioning and tolerancing	
TOLERANCES NOT SPECIFIED		AUTOCAD REL2008 LT		DO NOT SCALE DRAWING FOR DIMENSIONS	
.XX ±		INCH		Sheet 2 of 2	
.XXX ±				SCALE 1:18	
<DEG> ±					
CONFIDENTIAL DISCLOSURE This drawing is the property of the CAMPBELL GROUP OF THE SCOTT FETZER COMPANY and subject to return on demand. Its contents are confidential and must not be copied or submitted to outside parties for use or examination.					
DRAWN BY		CHECKED BY		APPROVED BY	
AEK		GES		DMS DB	
9/24/07		9/24/07		9/24/07 9/24/07	
MATERIAL		N/A		POWEREX	
PART NAME		ENCLOSED SCROLL		150 PRODUCTION DRIVE, HARRISON, OHIO 45030 Ph 888-769-7979 FAX (513) 367-3125	
FLOW SCHEMATIC		DWG NO		MSET100	
		SIZE		D	