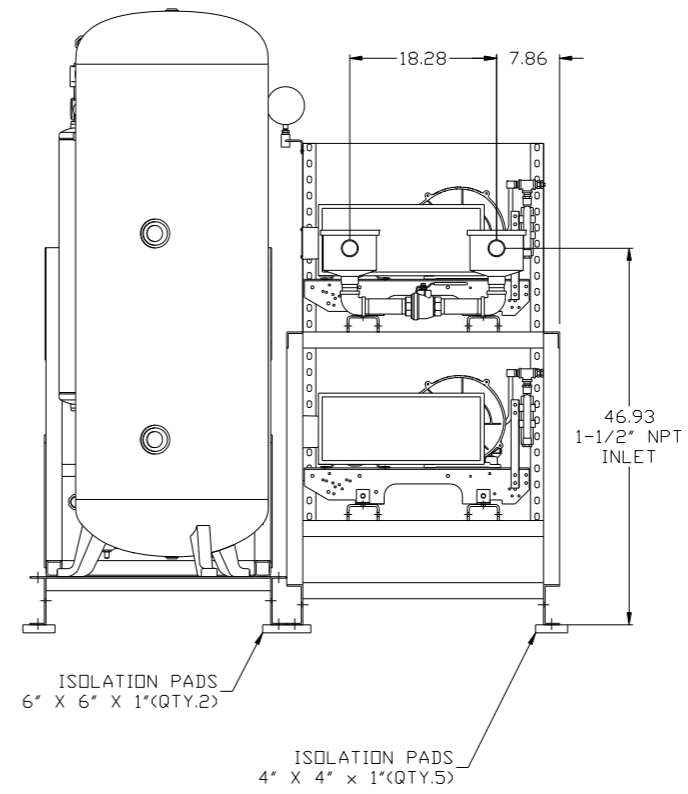
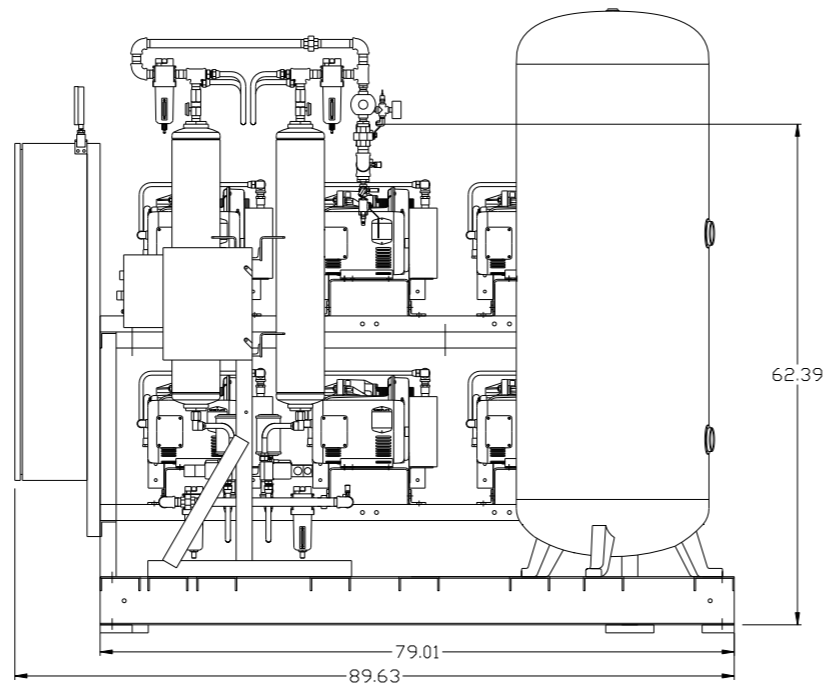
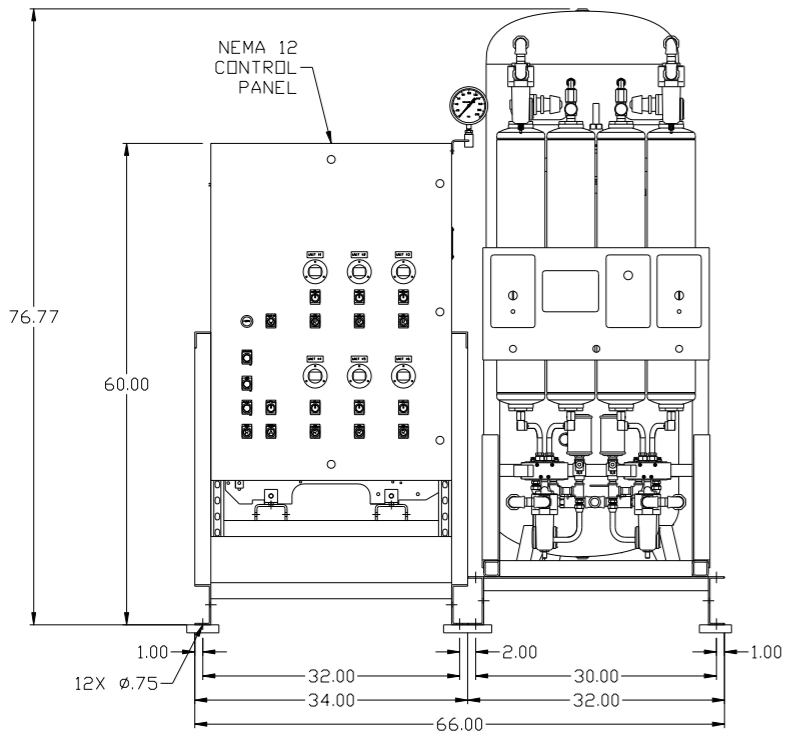
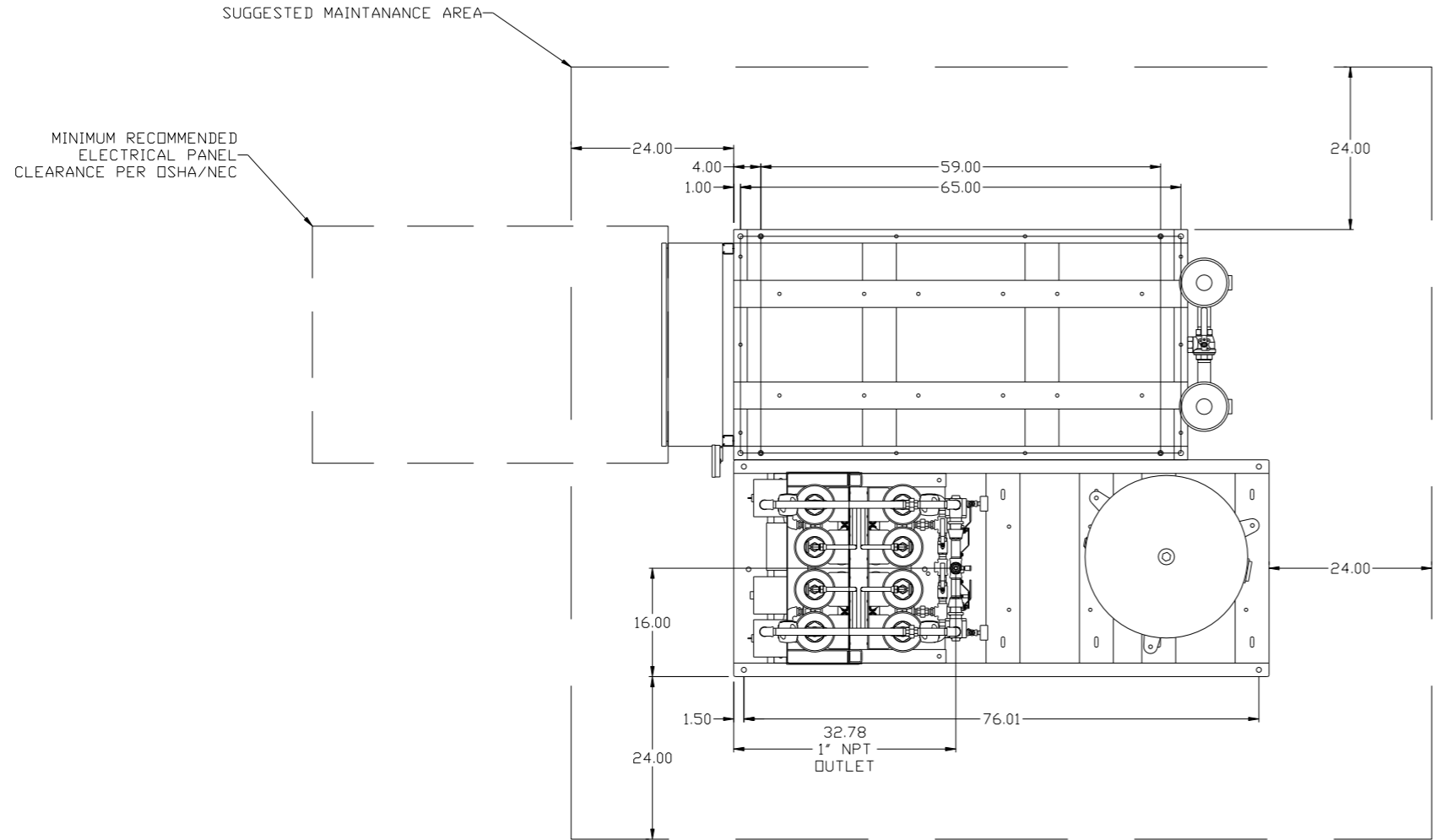


8 7 6 5 4 3 2 1

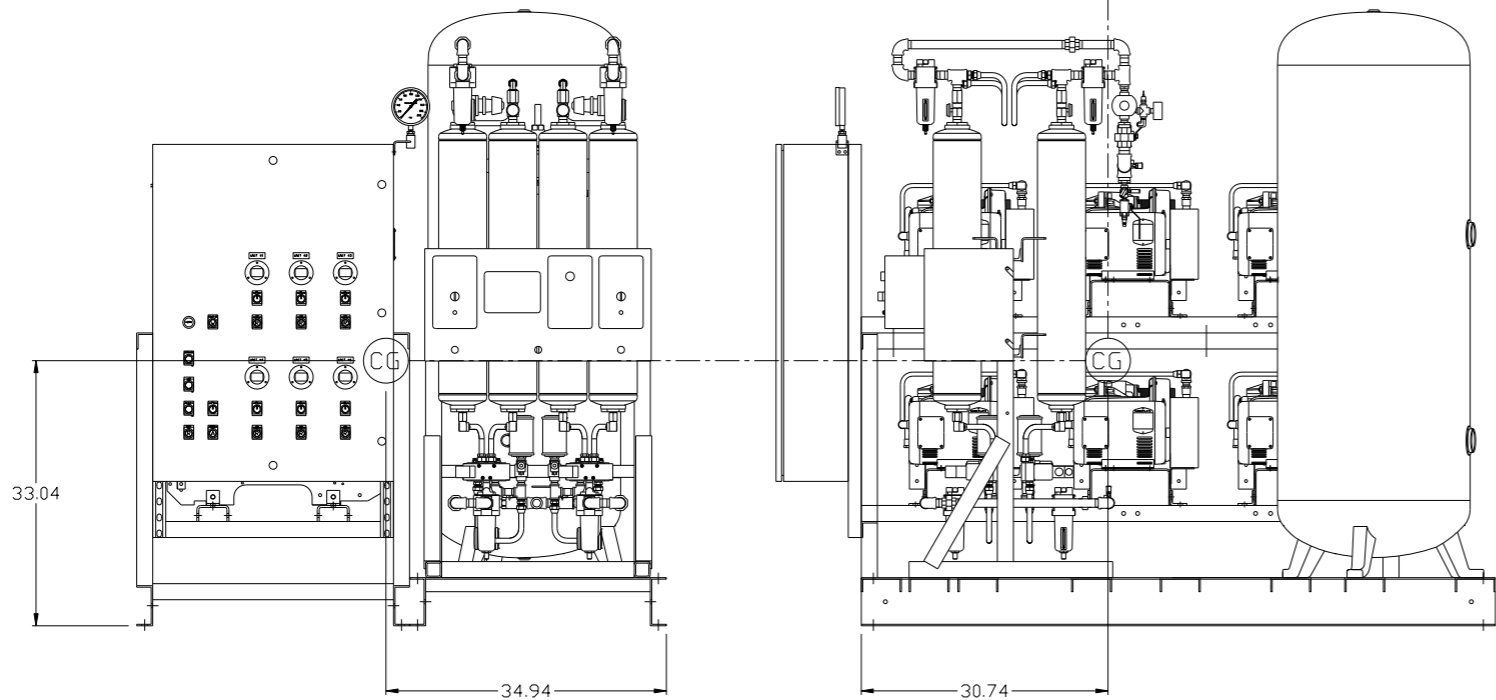
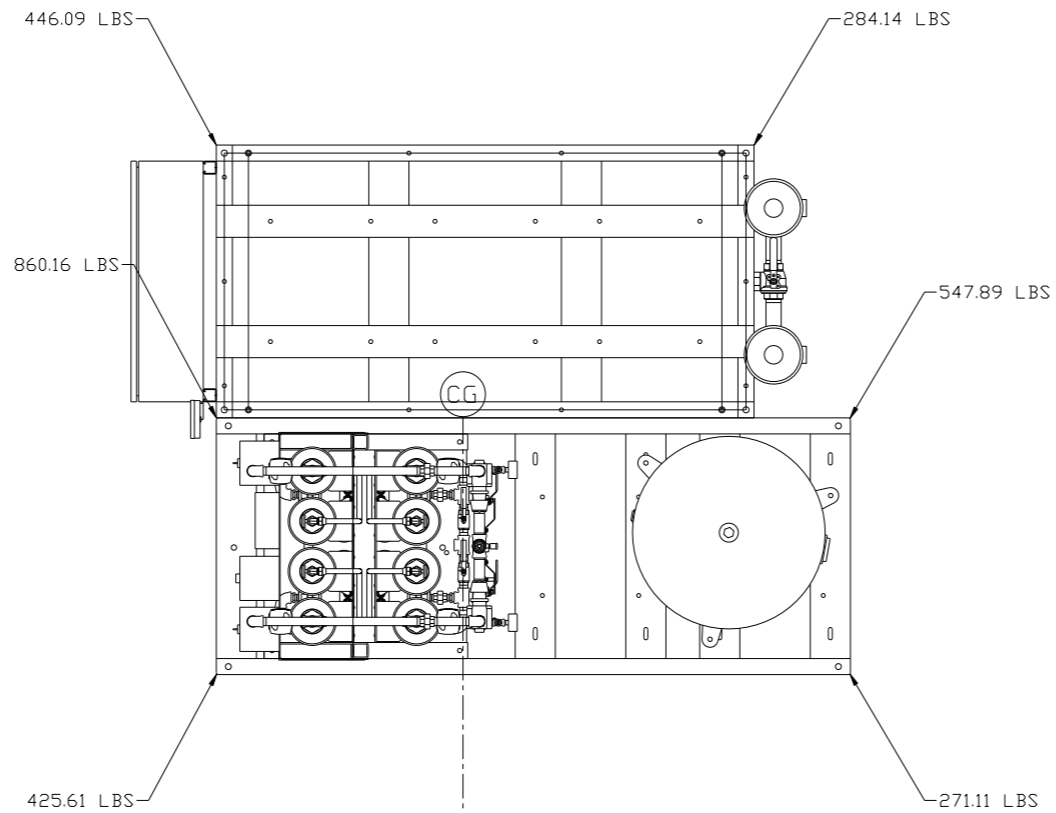
REV	ZONE	REVISION	DATE	ECN	NAME	CHKD
B-1	ALL	RELEASE TO PRODUCTION	9/13/01		GES	DW
B-2	2C-5	REMOVED HATCH FROM ELEC. PANEL	9/24/02		GES	
B-3	2B-3	ADDED MOUNTING FEET ON SCROLL FRAME	11/13/03		GES	GES
B-4	2C-4-6	CORRECTED DRYER SKID AND ELE PANEL	4/21/04		GES	GES
B-6	6.848	ADDED DME DRYER, REMOVED KN SERIES	10/04/06		RSN	DMS
C-1	B-3	REMOVED PRV IN DRYER STRING	3/2/07	21669	GES	DMS
C-2	B-3	ADDED CDG SHEET 3	8/9/07	21669	GES	DMS
D-1	D5	ADDED GAUGE	4/9/09	22127	AEK	GES
D-2	ALL	UPDATED TO CURRENT PRODUCTION	10/28/09	22127	AEK	GES
E-1	ALL	ADDED OUTLET LOCATION DIMENSIONS	4/1/10	22348	AEK	GES
F-1	ALL	UPDATED MULTI-SCROLL FRAMES	11/2/10	22405	AEK	GES
G-1	ALL	REMOVED SYSTEM GAUGE	01/29/11	22546	DMS	GES
H-1	ALL	MOVED SRV LOCATION	03/16/11	22546	DMS	GES
J-1	2 ALL	UPDATED/ADDED FLEX LINES	1/22/13	PXEC009	AEK	DMS
K-1	ALL	ADDED PBM/HMI SHEETS	3/26/13	PXEC030	AEK	GES
L-1	ALL	ADDED PANEL GAUGE TO BASIC CONTROL SHEETS	7/24/13	PXEC030	AEK	GES
M-1	2 C-4	MOVED PRESSURE SENSING LOCATION	10/17/14	PXEC071	AEK	GES



<b>SYMBOL LEGEND</b> ⊖ = MINUS DRAFT ⊕ = PLUS DRAFT HRC = BRINELL HARDNESS		= ADDITIONAL CONTROL REQ'D = BRINELL HARDNESS		Drawings to conform to the current revision of the following ANSI standards: Y14.3 Multi and sectional view dgs. Y14.5M Dimensioning and tolerancing
TOLERANCES NOT SPECIFIED .XX ± .XXX ± <DEG. > ±		AUTOCAD REL2000: <b>INCH</b>		<b>DO NOT SCALE DRAWING FOR DIMENSIONS</b> Sheet 1 of 3 SCALE: 1:12
<b>CONFIDENTIAL DISCLOSURE</b> This drawing is the property of POWEREX, INC. of the SCOTT FEITZER COMPANY and subject to return on demand. Its contents are confidential and must not be copied or submitted to outside parties for use or examination.		DRAWN BY: GES CHECKED BY: DWW DATE: 9/13/01	APPROVED BY: DWW DATE: 9/13/01	APPROVED BY: DWW DATE: 9/13/01
MATERIAL: N/A		 150 PRODUCTION DRIVE, HARRISON, OHIO 45030 Ph: 888-769-7979 FAX: (513) 367-3125		
PART NAME: SHP SCROLL HEXAPLEX MEDICAL PACKAGE		DWG NO: MSH0504		SIZE: D

8 7 6 5 4 3 2 1

REV	ZONE	REVISION	DATE	ECN	NAME	CHKD
C-2	ALL	ADDED C. D. G. SHEET 3.	8/9/07	21669	GES	DMS
D-1	DS	ADDED GAUGE	4/9/09	22127	AEK	GES
D-2	ALL	UPDATED TO CURRENT PRODUCTION	10/28/09	22127	AEK	GES
E-1	ALL	ADDED OUTLET LOCATION DIMENSIONS	4/1/10	22348	AEK	GES
F-1	ALL	UPDATED MULTI-SCROLL FRAMES	11/2/10	22405	AEK	GES
G-1	ALL	REMOVED SYSTEM GAUGE	01/29/11	22546	DMS	GES
H-1	ALL	MOVED SRV LOCATION	03/16/11	22546	DMS	GES
J-1	2 ALL	UPDATED/ADDED FLEX LINES	1/22/13	PXEC0009	AEK	DMS
K-1	ALL	ADDED PBM/HMI SHEETS	3/26/13	PXEC0030	AEK	GES
L-1	ALL	ADDED PANEL GAUGE TO BASIC CONTROL SHEETS	7/24/13	PXEC0030	AEK	GES
M-1	2 C-4	MOVED PRESSURE SENSING LOCATION	10/17/14	PXEC0071	AEK	GES

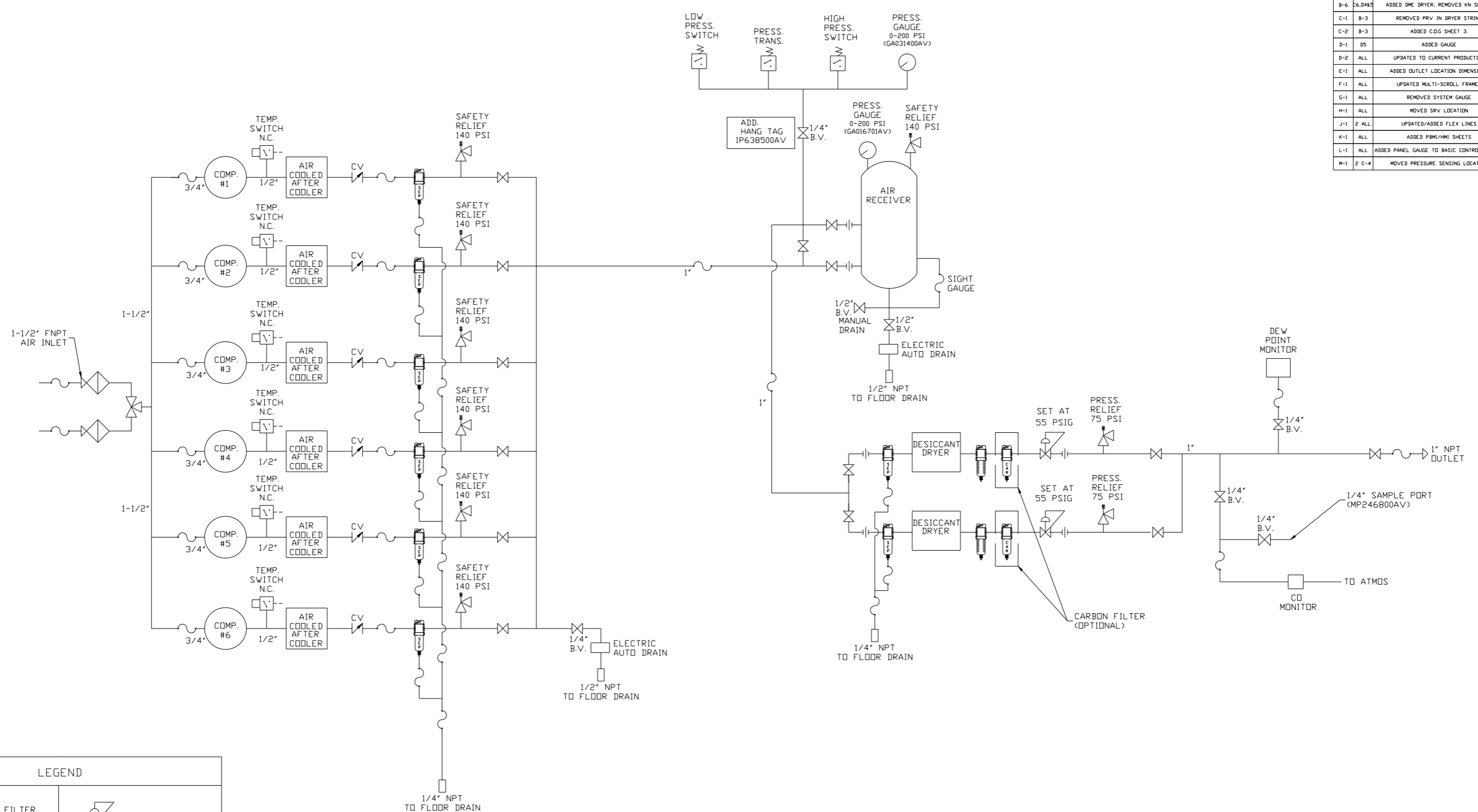


denotes center of gravity (CG)

TOTAL WEIGHT: 2835 LBS  
 C.O.G. DIMENSIONS  
 X (FRONT): -34.94"  
 Y (RIGHT): 30.74"  
 Z (HEIGHT): 33.04"

<b>SYMBOL LEGEND</b> ⊖ = MINUS DRAFT ⊕ = PLUS DRAFT ⊕ = BRINELL HARDNESS		= ADDITIONAL CONTROL REQ'D = BRINELL HARDNESS		Drawings to conform to the current revision of the following ANSI standards: Y14.3 Multi and sectional view dgs. Y14.5M Dimensioning and tolerancing
TOLERANCES NOT SPECIFIED .XX ± .XXX ± <math>\angle</math>(DEG) ±		AUTOCAD REL2000 INCH	DO NOT SCALE DRAWING FOR DIMENSIONS Sheet 3 of 3 SCALE 1:12	
<b>CONFIDENTIAL DISCLOSURE</b> This drawing is the property of POWEREX, INC. of the SCOTT FELTZER COMPANY and subject to return on demand. Its contents are confidential and must not be copied or submitted to outside parties for use or examination.		DRAWN BY GES	CHECKED BY DMS	APPROVED BY ENGINEERING MFG/MKTG GES
MATERIAL N/A				
PART NAME SCROLL HEXAPLEX CENTER OF GRAVITY		DWG NO MSH0504		SIZE D

REV	ZONE	REVISION	DATE	ECN	NAME	CHKD
B-1	ALL	RELEASE FOR PRODUCTION	08/08/07	21437	GES	DMS
B-2	2C-5	REMOVED HATCH FROM ELEC. PANEL	9/24/02		GES	
B-3	2B-3	ADDED MOUNTING FEET ON SCROLL FRAME	11/13/03		GES	GES
B-4	2C-4-6	CORRECTED DRYER SKID AND ELE PANEL	4/21/04		GES	GES
B-6	26.8485	ADDED DME DRYER, REMOVED KN SERIES	10/04/06		RSN	DMS
C-1	B-3	REMOVED PRV IN DRYER STRING	3/2/07	21669	GES	DMS
C-2	B-3	ADDED CDG SHEET 3.	8/9/07	21669	GES	DMS
D-1	D5	ADDED GAUGE	4/9/09	22127	AEK	GES
D-2	ALL	UPDATED TO CURRENT PRODUCTION	10/28/09	22127	AEK	GES
E-1	ALL	ADDED OUTLET LOCATION DIMENSIONS	4/1/10	22348	AEK	GES
F-1	ALL	UPDATED MULTI-SCROLL FRAMES	11/2/10	22405	AEK	GES
G-1	ALL	REMOVED SYSTEM GAUGE	01/29/11	22546	DMS	GES
H-1	ALL	MOVED SRV LOCATION	03/16/11	22546	DMS	GES
J-1	2 ALL	UPDATED/ADDED FLEX LINES	1/22/13	PXEC0009	AEK	DMS
K-1	ALL	ADDED PBM/HMI SHEETS	3/26/13	PXEC0030	AEK	GES
L-1	ALL	ADDED PANEL GAUGE TO BASIC CONTROL SHEETS	7/24/13	PXEC0030	AEK	GES
M-1	2 C-4	MOVED PRESSURE SENSING LOCATION	10/17/14	PXEC0071	AEK	GES



LEGEND	
	INTAKE FILTER
	AIR FILTER
	DIVERTER VALVE
	BALL VALVE
	CARBON FILTER
	REGULATOR
	CHECK VALVE
	SEPERATOR
	FLEX LINE

NOTES:  
 1) IF LAG 5 COMPRESSOR IS ENERGIZED ALARM WILL OCCUR.  
 2) PIPING TO THE INLET BY OTHERS AND TO BE PER NFPA99 4-3.1.1.9(b)  
 3) INSTRUMENTS DOWN STREAM OF SOURCE VALVE TO BE SUPPLIED BY OTHERS.

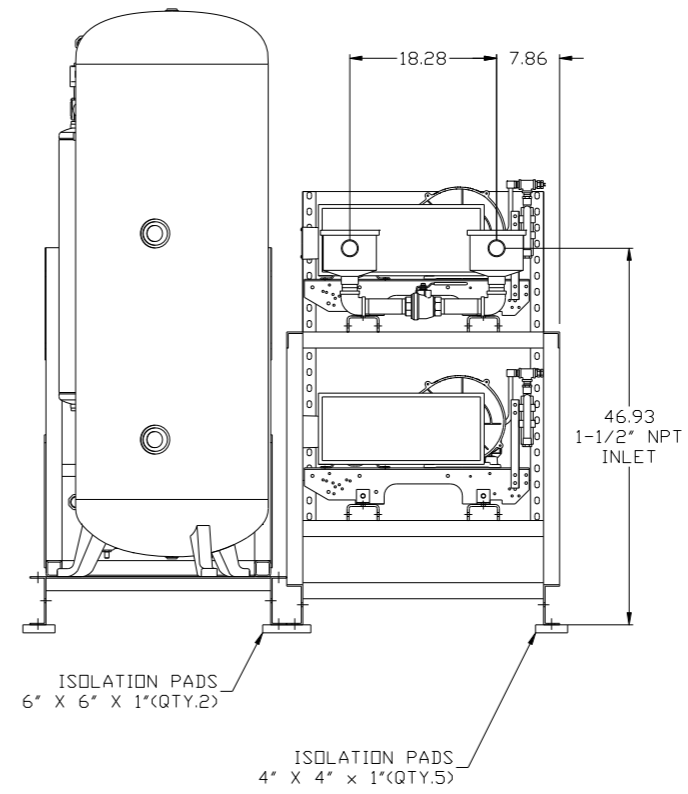
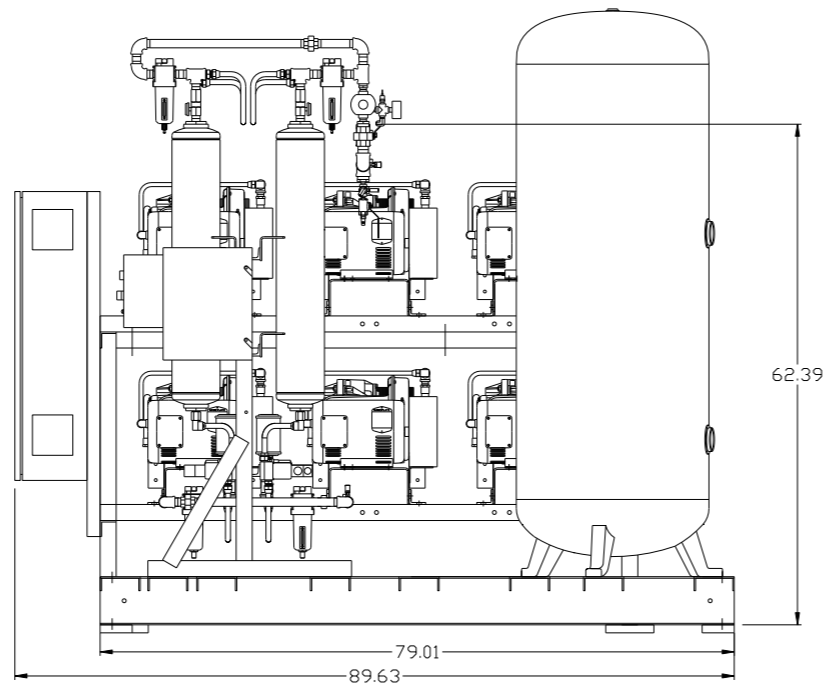
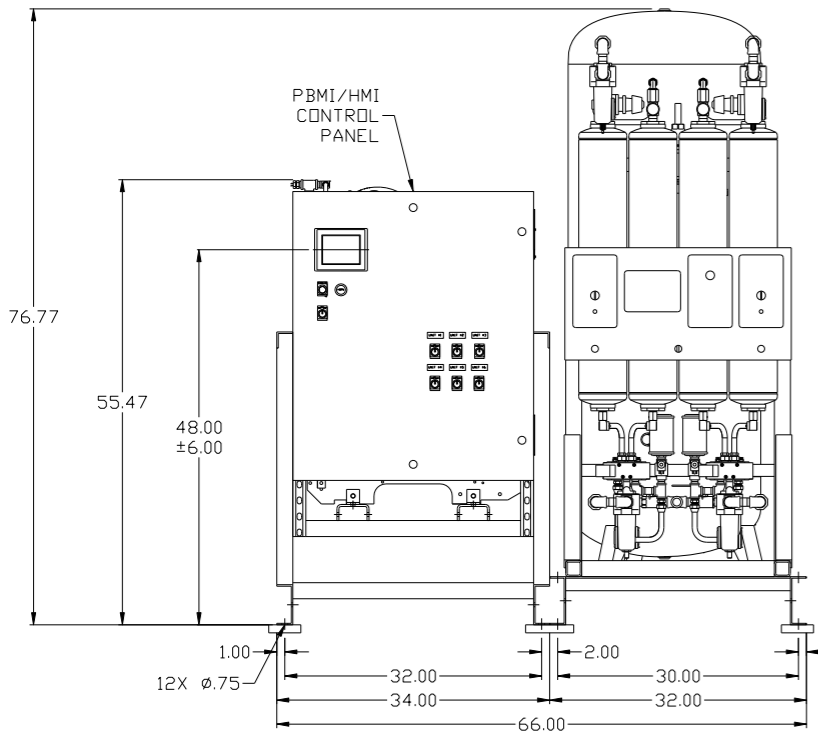
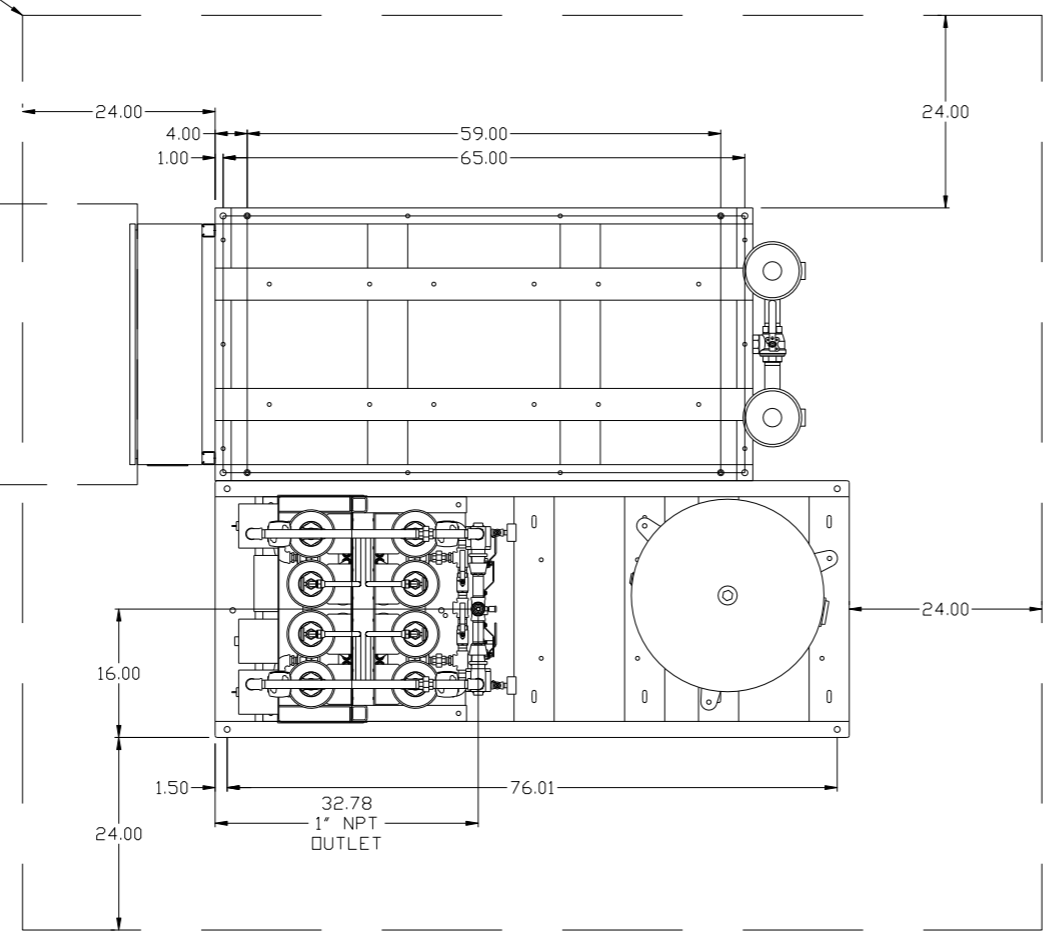
SYMBOL LEGEND ⊖ = MINUS DRAFT ⊕ = PLUS DRAFT TOLERANCES NOT SPECIFIED .XX ± .XXX ± <math>\angle</math> (DEG.) ±		= ADDITIONAL CONTROL REQ'D = BRINELL HARDNESS	Drawings to conform to the current revision of the following ANSI standards: Y14.3 Multi and sectional view dgs. Y14.5M Dimensioning and tolerancing
AUTOCAD 2000i INCH		DO NOT SCALE DRAWING FOR DIMENSIONS Sheet 2 of 3 SCALE 1:12	
CONFIDENTIAL DISCLOSURE This drawing is the property of POWEREX, INC. or the SCOTT FETZER COMPANY and subject to return on demand. Its contents are confidential and must not be copied or submitted to outside parties for use or examination.		DRAWN BY: GES CHECKED BY: DMS APPROVED BY: ENGINEERING MFG/MKTG: DMS, JJ	DATE: 08/08/07 08/08/07 08/08/07 08/08/07 08/08/07
MATERIAL:		 150 PRODUCTION DRIVE, HARRISON, OHIO 45030 Ph 888-769-7979 FAX (513) 367-3125	
PART NAME: HEX FLOW SCHEMATIC		DWG NO: MSH0504	SIZE: D

8 7 6 5 4 3 2 1

REV	ZONE	REVISION	DATE	ECN	NAME	CHKD
K-1	ALL	ADDED PBMI/HMI SHEETS	3/26/13	PXEC0030	AEK	GES
L-1	ALL	ADDED PANEL GAUGE TO BASIC CONTROL SHEETS	7/24/13	PXEC0030	AEK	GES
M-1	2 C-4	MOVED PRESSURE SENSING LOCATION	10/17/14	PXEC0071	AEK	GES

SUGGESTED MAINTANANCE AREA

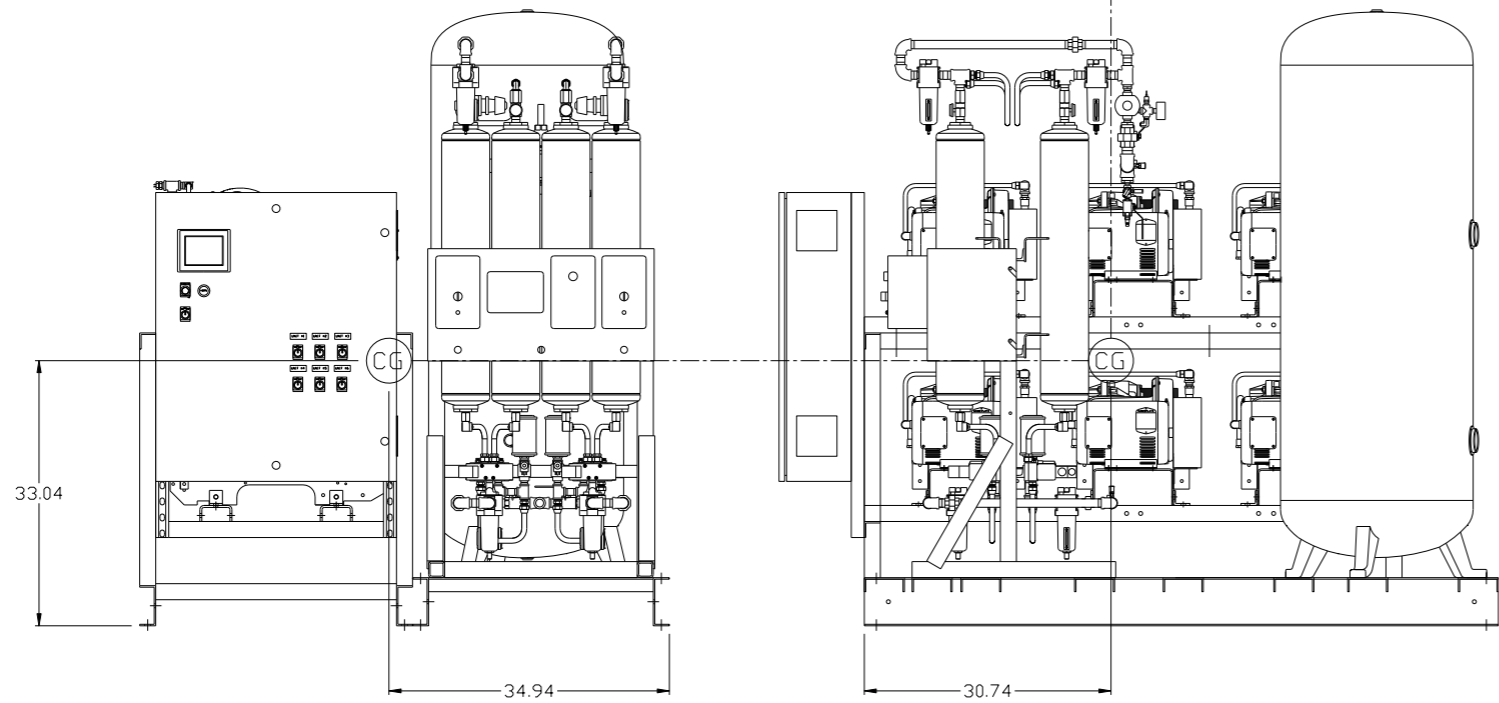
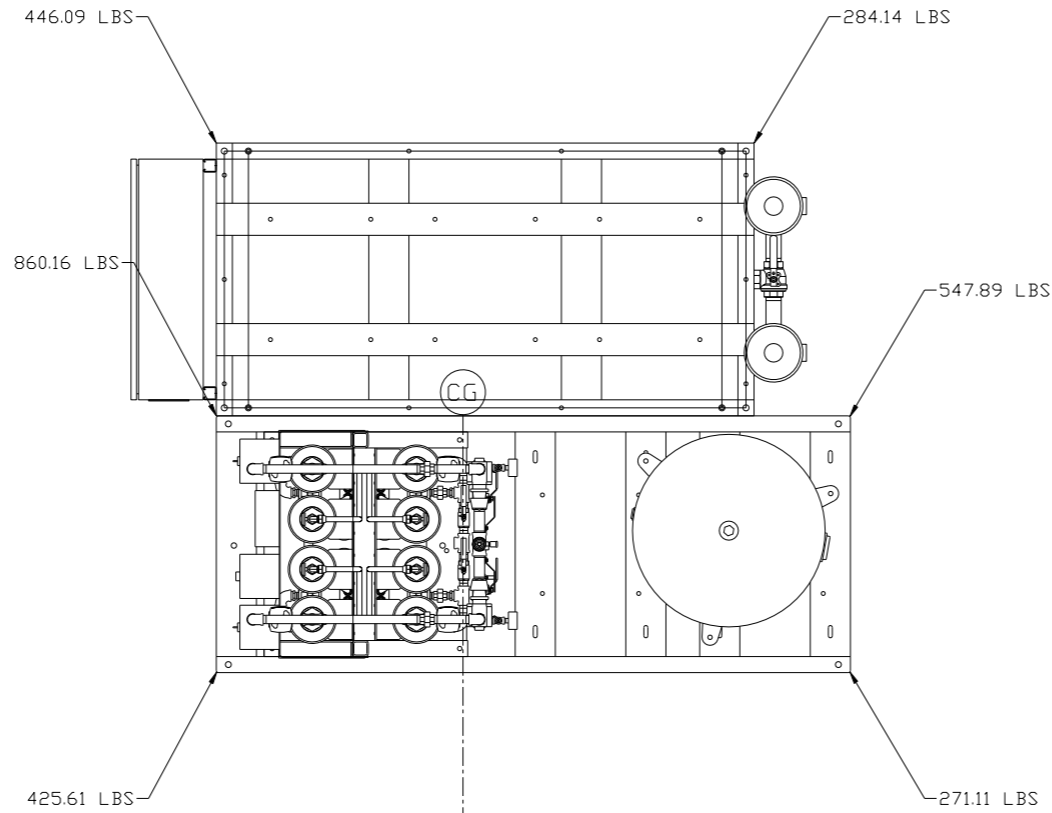
MINIMUM RECOMMENDED ELECTRICAL PANEL CLEARANCE PER OSHA/NEC



<b>SYMBOL LEGEND</b> ⊖ = MINUS DRAFT ⊕ = PLUS DRAFT Ⓢ = ADDITIONAL CONTROL REQ'D Ⓢ = BRINELL HARDNESS		Drawings to conform to the current revision of the following ANSI standards: Y14.3 Multi and sectional view dgs. Y14.5M Dimensioning and tolerancing	
TOLERANCES NOT SPECIFIED .XX ± .XXX ± << DEG > ±		DO NOT SCALE DRAWING FOR DIMENSIONS AUTOCAD REL2008 LT INCH Sheet 1 of 3 SCALE 1:12	
<b>CONFIDENTIAL DISCLOSURE</b> This drawing is the property of POWEREX, INC. of the SCOTT FEITZER COMPANY and subject to return on demand. Its contents are confidential and must not be copied or submitted to outside parties for use or examination.		DRAWN BY: AEK CHECKED BY: GES APPROVED BY: DMS, JJ 3/26/13 3/26/13 3/26/13 3/26/13	
MATERIAL: N/A		 150 PRODUCTION DRIVE, HARRISON, OHIO 45030 Ph: 888-769-7979 FAX: (513) 367-3125	
PART NAME: SHP SCROLL HEXAPLEX MEDICAL PACKAGE		DWG NO: MSH0504 SIZE: D	

8 7 6 5 4 3 2 1

REV	ZONE	REVISION	DATE	ECN	NAME	CHKD
K-1	ALL	ADDED PBM/HMI SHEETS	3/26/13	PXEC0030	AEK	GES
L-1	ALL	ADDED PANEL GAUGE TO BASIC CONTRL SHEETS	7/24/13	PXEC0030	AEK	GES
M-1	2 C-4	MOVED PRESSURE SENSING LOCATION	10/17/14	PXEC0071	AEK	GES

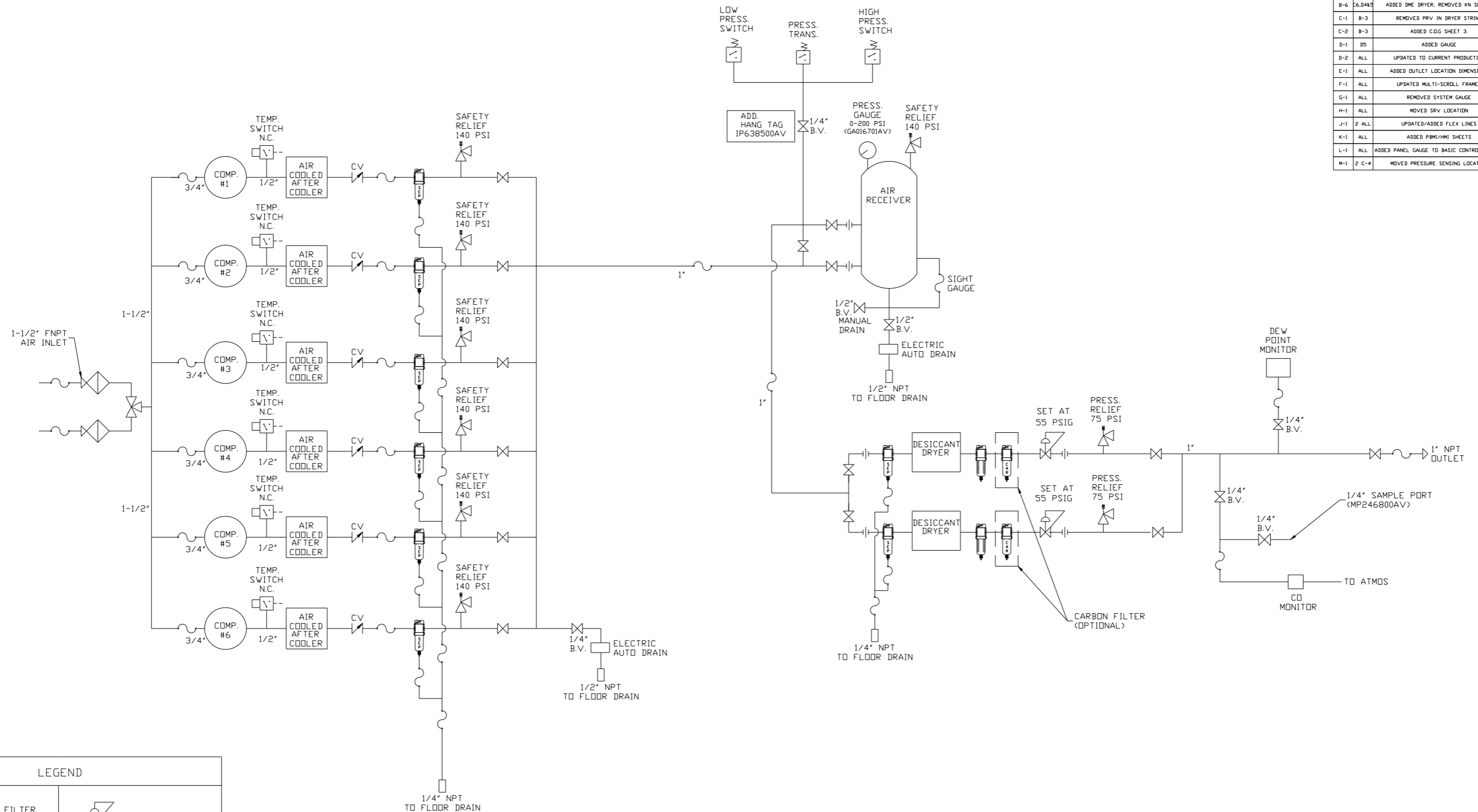


denotes center of gravity (CG)

TOTAL WEIGHT: 2835 LBS  
 C.O.G. DIMENSIONS  
 X (FRONT): -34.94"  
 Y (RIGHT): 30.74"  
 Z (HEIGHT): 33.04"

SYMBOL LEGEND		= ADDITIONAL CONTROL REQ'D		Drawings to conform to the current revision of the following ANSI standards:	
⊖	MINUS DRAFT	⊕	PLUS DRAFT	⊖	Y14.3 Multi and sectional view dsgs.
⊕	PLUS DRAFT	⊖	MINUS DRAFT	⊖	Y14.5M Dimensioning and tolerancing
TOLERANCES NOT SPECIFIED		AUTOCAD REL2008 LT		DO NOT SCALE DRAWING FOR DIMENSIONS	
.XX ±		INCH		Sheet 3 of 3	SCALE 1:12
.XXX ±					
<<DEG> ±					
CONFIDENTIAL DISCLOSURE					
This drawing is the property of POWEREX, INC. of the SCOTT FEITZER COMPANY and subject to return on demand. Its contents are confidential and must not be copied or submitted to outside parties for use or examination.					
DRAWN BY		CHECKED BY		APPROVED BY	
AEK		GES		DMS JJ	
3/26/13		3/26/13		3/26/13 3/26/13	
MATERIAL		N/A			
PART NAME		SCROLL HEXAPLEX		150 PRODUCTION DRIVE, HARRISON, OHIO 45030 Ph: 888-769-7979 FAX: (513) 367-3125	
CENTER OF GRAVITY		MSH0504		SIZE D	

REV	ZONE	REVISION	DATE	ECN	NAME	CHKD
B-1	ALL	RELEASE FOR PRODUCTION	08/08/07	21437	GES	DMS
B-2	2C-5	REMOVED HATCH FROM ELEC. PANEL	9/24/02		GES	
B-3	2B-3	ADDED MOUNTING FEET ON SCROLL FRAME	11/13/03		GES	GES
B-4	2C-4-6	CORRECTED DRYER SKID AND ELE PANEL	4/21/04		GES	GES
B-6	26.8485	ADDED DME DRYER, REMOVED KN SERIES	10/04/06		RSN	DMS
C-1	B-3	REMOVED PRV IN DRYER STRING	3/2/07		21669	GES
C-2	B-3	ADDED CDG SHEET 3.	8/9/07		21669	GES
D-1	D5	ADDED GAUGE	4/9/09		22127	AEK
D-2	ALL	UPDATED TO CURRENT PRODUCTION	10/28/09		22127	AEK
E-1	ALL	ADDED OUTLET LOCATION DIMENSIONS	4/1/10		22348	AEK
F-1	ALL	UPDATED MULTI-SCROLL FRAMES	11/2/10		22405	AEK
G-1	ALL	REMOVED SYSTEM GAUGE	01/29/11		22546	DMS
H-1	ALL	MOVED SRV LOCATION	03/16/11		22546	DMS
J-1	2 ALL	UPDATED/ADDED FLEX LINES	1/22/13		PXEC0009	AEK
K-1	ALL	ADDED PBM/HMI SHEETS	3/26/13		PXEC0030	AEK
L-1	ALL	ADDED PANEL GAUGE TO BASIC CONTROL SHEETS	7/24/13		PXEC0030	AEK
M-1	2 C-4	MOVED PRESSURE SENSING LOCATION	10/17/14		PXEC0071	AEK



LEGEND	
	INTAKE FILTER
	AIR FILTER
	DIVERTER VALVE
	BALL VALVE
	CARBON FILTER
	REGULATOR
	CHECK VALVE
	SEPERATOR
	FLEX LINE

NOTES:  
 1) IF LAG 5 COMPRESSOR IS ENERGIZED ALARM WILL OCCUR.  
 2) PIPING TO THE INLET BY OTHERS AND TO BE PER NFPA99 4-3.1.1.9(b)  
 3) INSTRUMENTS DOWN STREAM OF SOURCE VALVE TO BE SUPPLIED BY OTHERS.

SYMBOL LEGEND ⊖ = MINUS DRAFT ⊕ = PLUS DRAFT TOLERANCES NOT SPECIFIED .XX ± .XXX ± <math>\angle</math> (DEG.) ±		= ADDITIONAL CONTROL REQ'D = BRINELL HARDNESS	Drawings to conform to the current revision of the following ANSI standards: Y14.3 Multi and sectional view dgs. Y14.5M Dimensioning and tolerancing
AUTOCAD 2000i INCH		DO NOT SCALE DRAWING FOR DIMENSIONS Sheet 2 of 3 SCALE 1:12	
CONFIDENTIAL DISCLOSURE This drawing is the property of POWEREX, INC. of the SCOTT FETZER COMPANY and subject to return on demand. Its contents are confidential and must not be copied or submitted to outside parties for use or examination.		DRAWN BY: GES CHECKED BY: DMS APPROVED BY: ENGINEERING MFG/MKTG: DMS, JJ	DATE: 08/08/07 08/08/07 08/08/07 08/08/07 08/08/07
MATERIAL:		 150 PRODUCTION DRIVE, HARRISON, OHIO 45030 Ph 888-769-7979 FAX (513) 367-3125	
PART NAME: HEX FLOW SCHEMATIC		DWG NO: MSH0504	SIZE: D