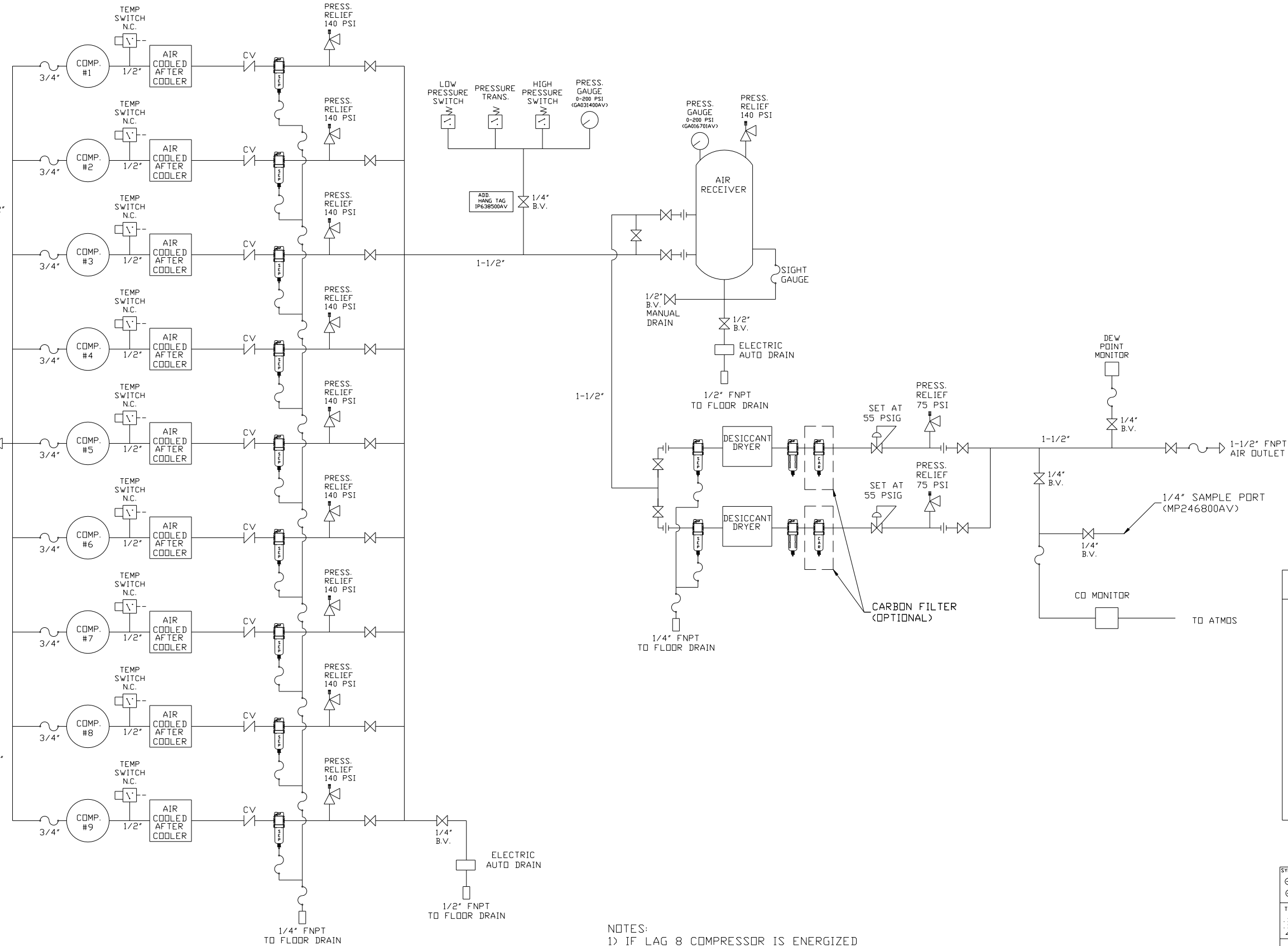




REV	ZONE	REVISION	DATE	ECN	NAME	CHKD
A-1	ALL	RELEASE FOR APPROVAL	5/7/01	18644	GES	DW
B-1	ALL	RELEASE TO PRODUCTION	5/15/01	18644	GES	DW
C-1	1B-4	REM DIV VALVE, ADD SAFETY BALL VALVES	8/20/02	19904	GES	DW
C-1	ALL	REMOVED WATER BOWL OUTLET WAS 1"	6/01/04	20787	DW	DW
D-1	ALL	SWITCHED LOCATION OF CHECK VALVE & SEP	01/19/06	21438	DMS	DMS
E-1	ALL	REVISED DEW POINT CONNECTION	09/01/07	21669	DMS	GES
F1	ALL	REPL DIV VALVES WITH B.V. & 140PSI SRV ADDED MANUAL DRAIN ADDED 75 PSI SRV	01/09/08	21907	DMS	GES
F2	ALL	ADDED HANGTAG/ ISO VALVE CHANGED DRYER TO CORRECT MODEL (DME050) ADDED NEW STYLE TANK AND PANEL	02/25/08	21907	AEK	GES
F-3	1 ALL	UPDATED TO E-SERIES SCROLL	11/17/08	21907	AEK	GES
G-1	1 ALL	UPDATED MULTI-SCROLL FRAMES	11/2/10	22405	AEK	GES
H-1	1 ALL	REVERSE LOCATION OF THE CV & FLEX HOSE	03/28/11	22546	DMS	GES
J-1	2 AB-38	CORRECTED INLET PLUMBING SIZE	4/17/13	PXEC0030	AEK	GES
J-2	ALL	ADDED PBM/HMI SHEETS	11/18/13	PXEC0030	AEK	GES

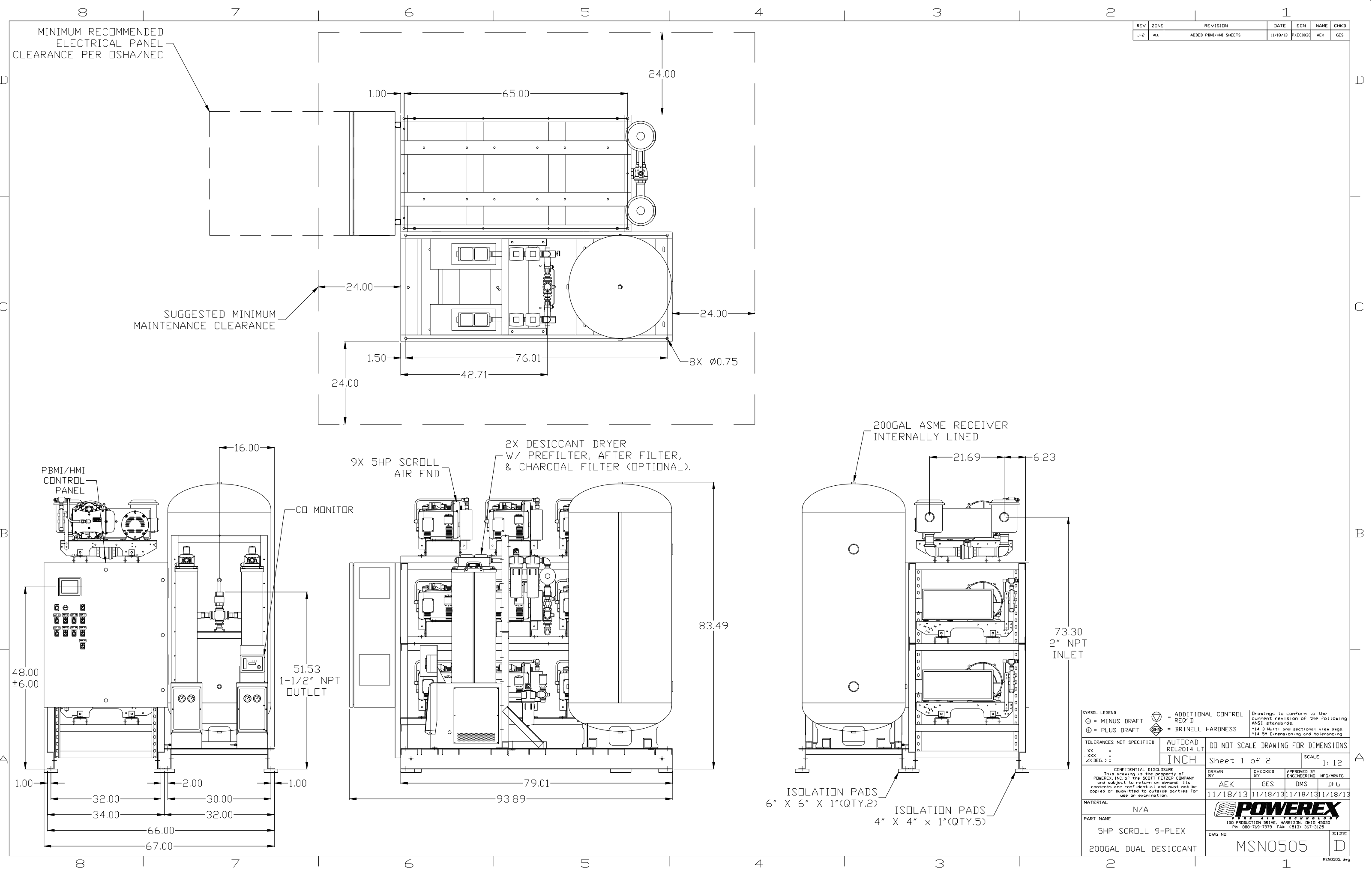


- NOTES:
- 1) IF LAG 8 COMPRESSOR IS ENERGIZED ALARM WILL OCCUR.
  - 2) PIPING TO THE INLET BY OTHERS AND TO BE PER NFPA99 4-3.1.1.9(b)
  - 3) INSTRUMENTS DOWN STREAM OF SOURCE VALVE TO BE SUPPLIED BY OTHERS.
  - 4) THIS DRAWING COVERS PART#'S -25, -35, AND -45.

LEGEND	
	INTAKE FILTER
	AIR FILTER
	DIVERTER VALVE
	BALL VALVE
	CARBON FILTER
	REGULATOR
	CHECK VALVE
	SEPERATOR
	FLEX JOINT

SYMBOL LEGEND		= ADDITIONAL CONTROL REQ'D		Drawings to conform to the current revision of the following ANSI standards:	
⊖ = MINUS DRAFT		= BRINELL HARDNESS		Y14.3 Multi and sectional view dgs.	
⊕ = PLUS DRAFT				Y14.5M Dimensioning and tolerancing	
TOLERANCES NOT SPECIFIED		AUTOCAD 2000i		DO NOT SCALE DRAWING FOR DIMENSIONS	
.XX ±		INCH		Sheet 2 of 2	
.XXX ±				SCALE 1: 12	
∠<DEG. > ±					
CONFIDENTIAL DISCLOSURE		DRAWN BY		CHECKED BY	
This drawing is the property of POWEREX, INC. of the SCOTT FELTZER COMPANY and subject to return on demand. Its contents are confidential and must not be copied or submitted to outside parties for use or examination.		GES		DWW	
		5/7/01		5/7/01	
MATERIAL		APPROVED BY		ENGINEERING	
				MFG/MKTG	
PART NAME		DWG NO		SIZE	
SCROLL 9-PLEX				D	
FLOW SCHEMATIC		MSN0505			

MSN0505.dwg



REV	ZONE	REVISION	DATE	ECN	NAME	CHKD
J-2	ALL	ADDED PBMI/HMI SHEETS	11/18/13	PXEC0030	AEK	GES

<b>SYMBOL LEGEND</b> ⊖ = MINUS DRAFT ⊕ = PLUS DRAFT XXX ± Z<DEG> ±		⊕ = ADDITIONAL CONTROL REQ'D BRINELL HARDNESS	Drawings to conform to the current revision of the following ANSI standards: Y14.3 Multi and sectional view dgs. Y14.5M Dimensioning and tolerancing	
TOLERANCES NOT SPECIFIED		AUTOCAD REL2014 LT	DO NOT SCALE DRAWING FOR DIMENSIONS	
INCH		Sheet 1 of 2	SCALE 1:12	
<b>CONFIDENTIAL DISCLOSURE</b> This drawing is the property of POWEREX, INC. of the SCOTT FELTZER COMPANY and subject to return on demand. Its contents are confidential and must not be copied or submitted to outside parties for use or examination.		DRAWN BY AEK	CHECKED BY GES	APPROVED BY DMS DFG
MATERIAL N/A		11/18/13	11/18/13	11/18/13 11/18/13
PART NAME 5HP SCROLL 9-PLEX 200GAL DUAL DESICCANT		<b>POWEREX</b> 150 PRODUCTION DRIVE, HARRISON, OHIO 45030 Ph: 888-769-7979 FAX: (513) 367-3125		SIZE D

MSN0505.dwg

