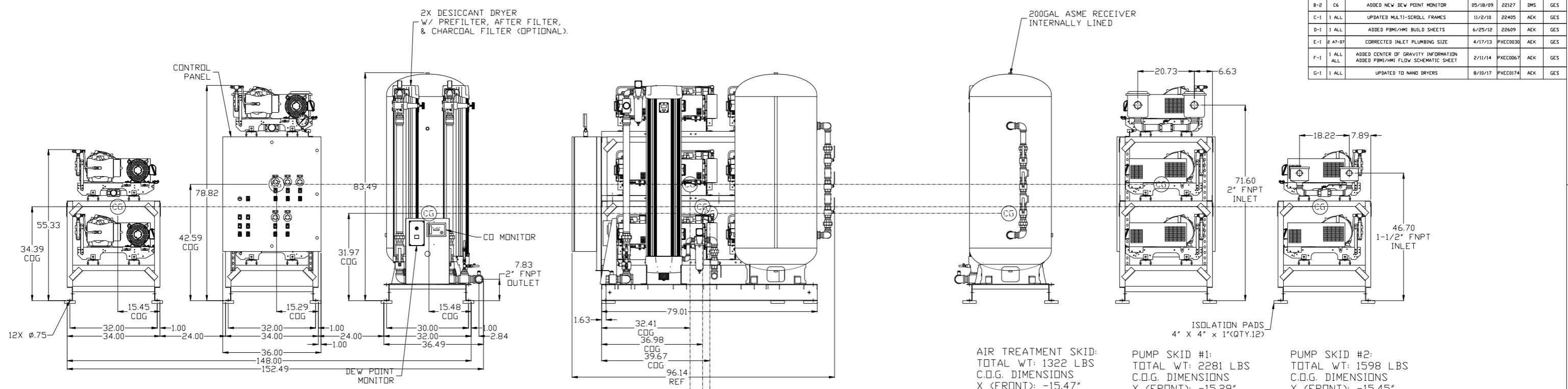


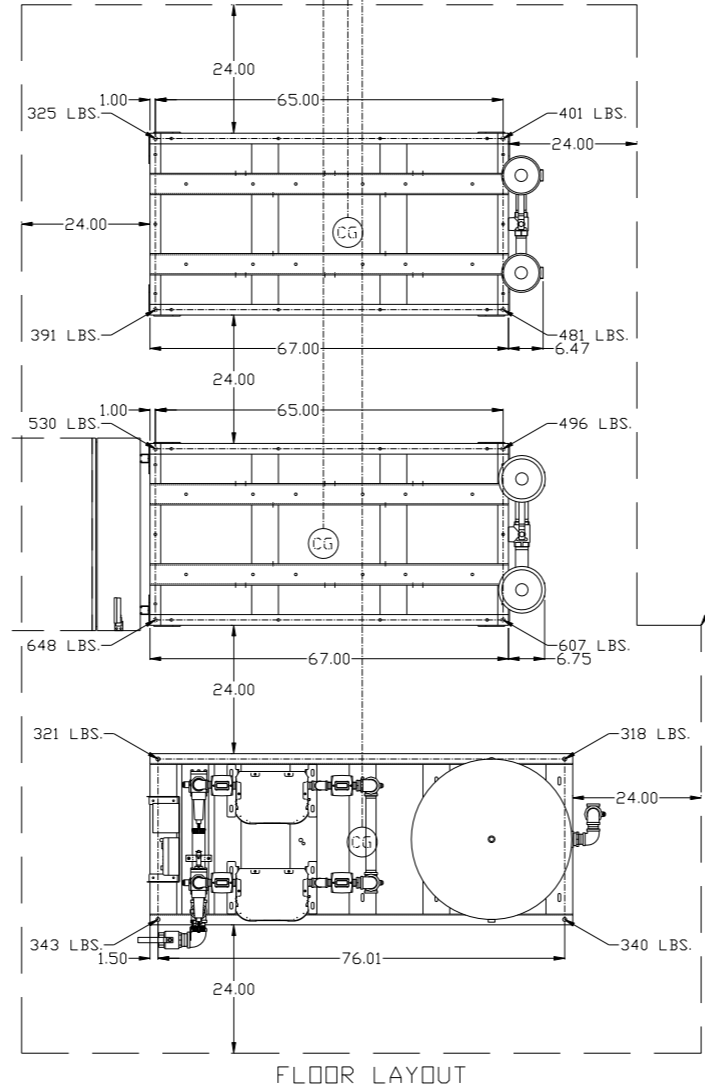
REV	ZONE	REVISION	DATE	ECN	NAME	CHKD
B-1	ALL	RELEASE TO PRODUCTION	1/8/09	22126	AEK	GES
B-2	C6	ADDED NEW DEW POINT MONITOR	05/18/09	22127	DMS	GES
C-1	1 ALL	UPDATED MULTI-SCROLL FRAMES	11/2/10	22405	AEK	GES
D-1	1 ALL	ADDED PBM/HMI BUILD SHEETS	6/25/12	22609	AEK	GES
E-1	2 A7-D7	CORRECTED INLET PLUMBING SIZE	4/17/13	PXEC0030	AEK	GES
F-1	1 ALL	ADDED CENTER OF GRAVITY INFORMATION ADDED PBM/HMI FLOW SCHEMATIC SHEET	2/11/14	PXEC0067	AEK	GES
G-1	1 ALL	UPDATED TO NANO DRYERS	8/18/17	PXEC0174	AEK	GES



AIR TREATMENT SKID:
TOTAL WT: 1322 LBS
C.O.G. DIMENSIONS
X (FRONT): -15.47"
Y (RIGHT): 39.67"
Z (HEIGHT): 31.97"

PUMP SKID #1:
TOTAL WT: 2281 LBS
C.O.G. DIMENSIONS
X (FRONT): -15.29"
Y (RIGHT): 32.41"
Z (HEIGHT): 42.59"

PUMP SKID #2:
TOTAL WT: 1598 LBS
C.O.G. DIMENSIONS
X (FRONT): -15.45"
Y (RIGHT): 36.98"
Z (HEIGHT): 34.39"

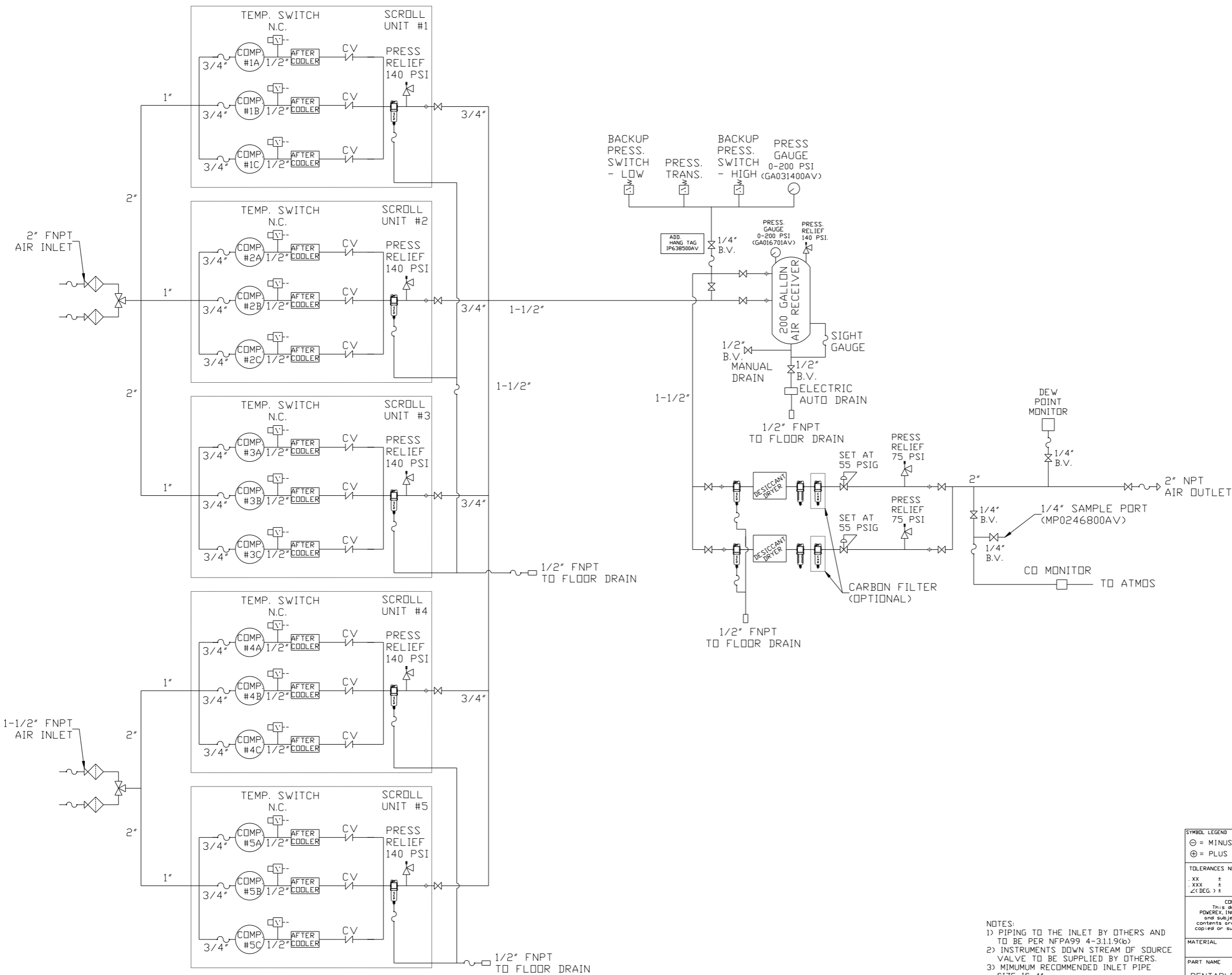


NOTE: SYSTEM DESIGNED IN
COMPLIANCE WITH US NFPA '99,
LATEST EDITION.

CG denotes center of gravity

SYMBOL LEGEND		= ADDITIONAL CONTROL REQ'D		Drawings to conform to the current revision of the following ANSI standards:	
⊖	MINUS DRAFT	⊕	PLUS DRAFT	⊖	BRINELL HARDNESS
TOLERANCES NOT SPECIFIED		AUTOCAD REL2008 LT		DO NOT SCALE DRAWING FOR DIMENSIONS	
.XX ±		INCH		Sheet 1 of 2	
.XXX ±				SCALE 1:18	
<Z< DEG. ±					
CONFIDENTIAL DISCLOSURE This drawing is the property of POWEREX, INC. of the SCOTT FELTZER COMPANY and subject to return on demand. Its contents are confidential and must not be copied or submitted to outside parties for use or examination.					
DRAWN BY		CHECKED BY	APPROVED BY		ENGINEERING MFG/MKTG
AEK		GES	DMS		RJR
1/8/09		1/8/09	1/8/09		1/8/09
MATERIAL N/A					
PART NAME PENTAPLEX DILLESS SCROLL 15HP 200 GAL BASEMOUNT DUPLX DESICCANT					
DWG NO MSP1505X5				SIZE D	

REV	ZONE	REVISION	DATE	ECN	NAME	CHKD
B-1	ALL	RELEASE TO PRODUCTION	1/8/09	22126	AEK	GES
B-2	CE	ADDED NEW DEW POINT MONITOR	05/18/09	22127	DMS	GES
C-1	1 ALL	UPDATED MULTI-SCROLL FRAMES	11/2/10	22405	AEK	GES
D-1	1 ALL	ADDED PBM/HMI BUILD SHEETS	6/25/12	22609	AEK	GES
E-1	2 A7-D7	CORRECTED INLET PLUMBING SIZE	4/17/13	PXEC0030	AEK	GES
F-1	1 ALL	ADDED CENTER OF GRAVITY INFORMATION	2/11/14	PXEC0067	AEK	GES
G-1	1 ALL	UPDATED TO HAND DRYERS	8/18/17	PXEC0174	AEK	GES



	RELIEF VALVE		PRESSURE SWITCH
	INTAKE FILTER		REGULATOR
	AIR FILTER		SEPARATOR
	3 WAY VALVE		CHECK VALVE
	CARBON FILTER		FLEX LINE
	BALL VALVE		TSH
			HIGH TEMP SWITCH

SYMBOL LEGEND		= ADDITIONAL CONTROL REQ'D		Drawings to conform to the current revision of the following ANSI standards:	
= MINUS DRAFT		= BRINELL HARDNESS		Y14.3 Multi and sectional view dgs.	
= PLUS DRAFT				Y14.5M Dimensioning and tolerancing	
TOLERANCES NOT SPECIFIED		AUTOCAD REL2008 LT		DO NOT SCALE DRAWING FOR DIMENSIONS	
.XX ±		INCH		Sheet 2 of 2	
.XXX ±				SCALE 1:18	
<< DEG >> ±					
CONFIDENTIAL DISCLOSURE					
This drawing is the property of POWEREX, INC. or the SCOTT FETZER COMPANY and subject to return on demand. Its contents are confidential and must not be copied or submitted to outside parties for use or examination.					
DRAWN BY		CHECKED BY		APPROVED BY	
AEK		GES		DMS RJR	
1/8/09		1/8/09		1/8/09 1/8/09	
MATERIAL		N/A		DRAWN BY	
PART NAME		PENTAPLEX DILLESS SCROLL MEDICAL PACKAGE FLOW SCHEMATIC		SIZE	
				D	

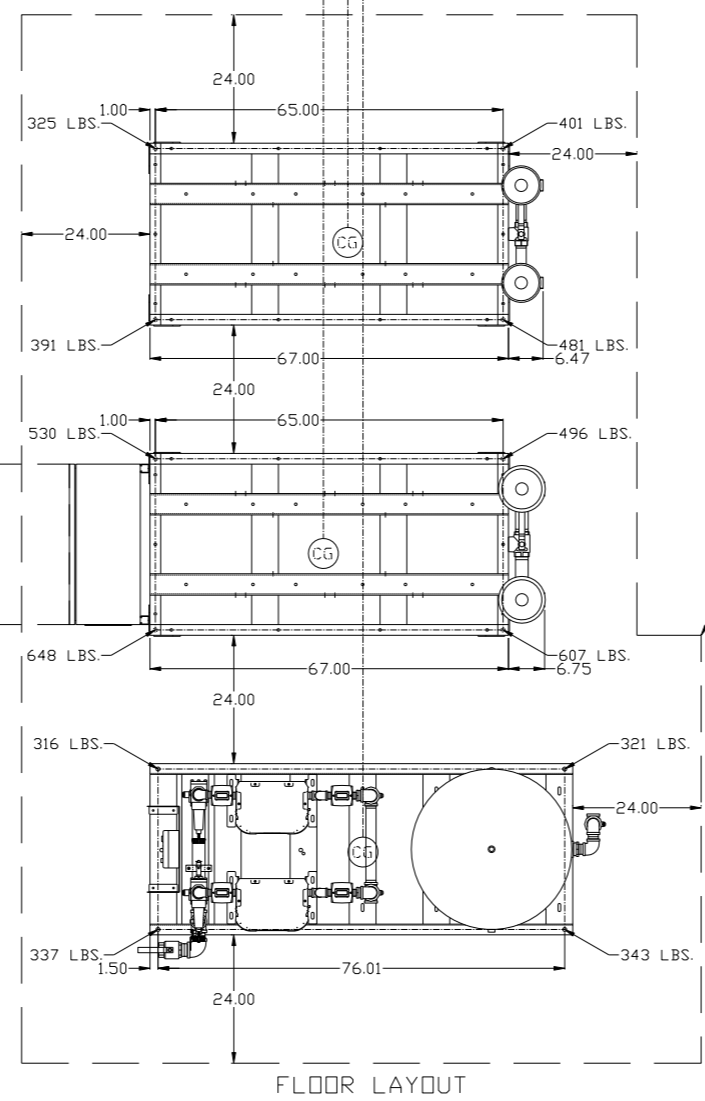
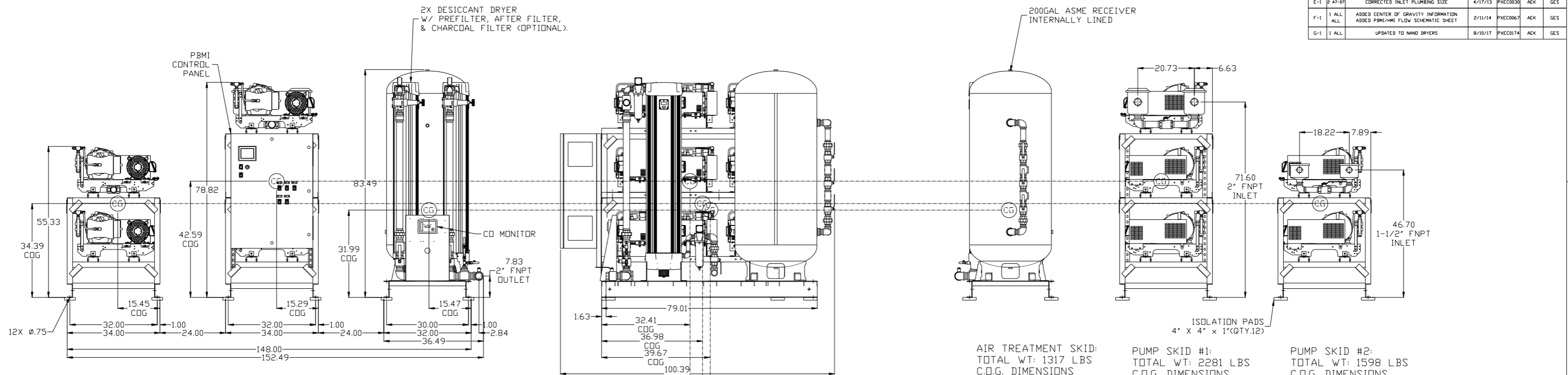
- NOTES:
- 1) PIPING TO THE INLET BY OTHERS AND TO BE PER NFPA99 4-3.1.1.9(b)
 - 2) INSTRUMENTS DOWN STREAM OF SOURCE VALVE TO BE SUPPLIED BY OTHERS.
 - 3) MINIMUM RECOMMENDED INLET PIPE SIZE IS 4"

8 7 6 5 4 3 2 1

8 7 6 5 4 3 2 1

MSP1505X5.dwg

REV	ZONE	REVISION	DATE	ECN	NAME	CHKD
D-1	ALL	ADDED PBMI/HMI BUILD SHEET	6/25/12	22609	AEK	GES
E-1	2 A7-D7	CORRECTED INLET PLUMBING SIZE	4/17/13	PXEC0030	AEK	GES
F-1	1 ALL	ADDED CENTER OF GRAVITY INFORMATION ADDED PBMI/HMI FLOW SCHEMATIC SHEET	2/11/14	PXEC0067	AEK	GES
G-1	1 ALL	UPDATED TO HAND DRYERS	8/10/17	PXEC0174	AEK	GES

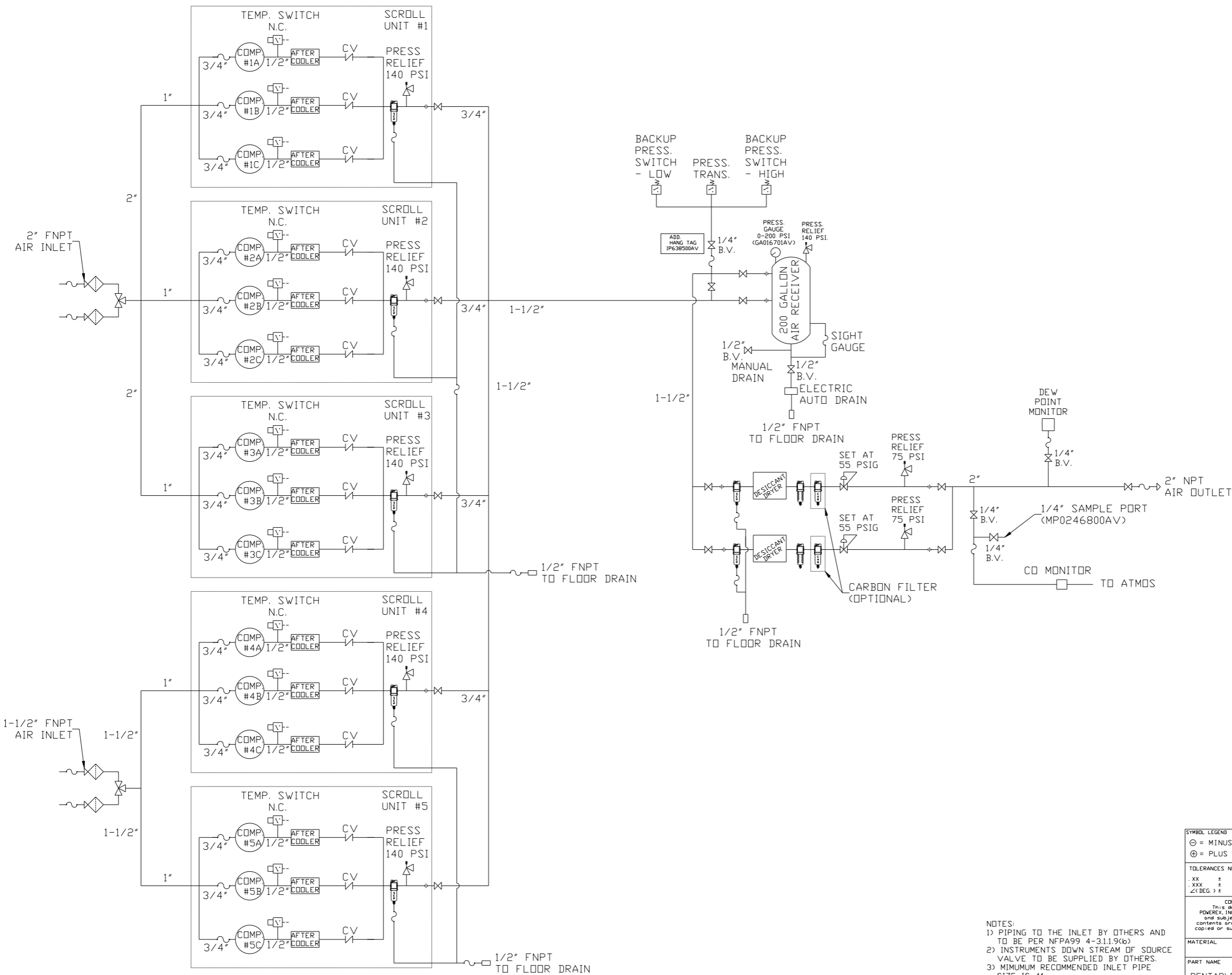


NOTE: SYSTEM DESIGNED IN
COMPLIANCE WITH US NFPA '99,
LATEST EDITION.

⊙ denotes center of gravity

SYMBOL LEGEND		= ADDITIONAL CONTROL REQ'D		Drawings to conform to the current revision of the following ANSI standards:	
⊖	MINUS DRAFT	⊕	PLUS DRAFT	⊖	BRINELL HARDNESS
TOLERANCES NOT SPECIFIED		AUTOCAD REL2008 LT		DO NOT SCALE DRAWING FOR DIMENSIONS	
.XX ±		INCH		Sheet 1 of 2	SCALE 1:18
CONFIDENTIAL DISCLOSURE This drawing is the property of POWEREX, INC. of the SCOTT FELTZER COMPANY and subject to return on demand. Its contents are confidential and must not be copied or submitted to outside parties for use or examination.					
DRAWN BY		CHECKED BY		APPROVED BY	
AEK		GES		DMS RJR	
6/25/12		6/25/12		6/25/12 6/25/12	
MATERIAL		N/A			
PART NAME		PENTAPLEX DILLESS SCROLL		SIZE	
		15HP 200 GAL BASEMOUNT		MSP1505X5	
		DUPLX DESICCANT		D	

REV	ZONE	REVISION	DATE	ECN	NAME	CHKD
B-1	ALL	RELEASE TO PRODUCTION	1/8/09	22126	AEK	GES
B-2	CE	ADDED NEW DEW POINT MONITOR	05/18/09	22127	DMS	GES
C-1	1 ALL	UPDATED MULTI-SCROLL FRAMES	11/2/10	22405	AEK	GES
D-1	1 ALL	ADDED PBM/HMI BUILD SHEETS	6/25/12	22609	AEK	GES
E-1	2 A7-D7	CORRECTED INLET PLUMBING SIZE	4/17/13	PXEC0030	AEK	GES
F-1	1 ALL	ADDED CENTER OF GRAVITY INFORMATION	2/11/14	PXEC0067	AEK	GES
G-1	1 ALL	UPDATED TO HAND DRYERS	8/18/17	PXEC0174	AEK	GES



LEGEND	
	RELIEF VALVE
	INTAKE FILTER
	AIR FILTER
	3 WAY VALVE
	CARBON FILTER
	BALL VALVE
	PRESSURE SWITCH
	REGULATOR
	SEPARATOR
	CHECK VALVE
	FLEX LINE
	TSH
	HIGH TEMP SWITCH

SYMBOL LEGEND		= ADDITIONAL CONTROL REQ'D		Drawings to conform to the current revision of the following ANSI standards:	
= MINUS DRAFT		= BRINELL HARDNESS		Y14.3 Multi and sectional view dgs. Y14.5M Dimensioning and tolerancing	
= PLUS DRAFT					
TOLERANCES NOT SPECIFIED		AUTOCAD REL2008 LT		DO NOT SCALE DRAWING FOR DIMENSIONS	
.XX ±		INCH		Sheet 2 of 2	
.XXX ±				SCALE 1:18	
<< DEG >> ±					
CONFIDENTIAL DISCLOSURE This drawing is the property of POWEREX, INC. or the SCOTT FEITZER COMPANY and subject to return on demand. Its contents are confidential and must not be copied or submitted to outside parties for use or examination.					
DRAWN BY		CHECKED BY		APPROVED BY	
AEK		GES		DMS RJR	
1/8/09		1/8/09		1/8/09 1/8/09	
MATERIAL		N/A		POWEREX	
PART NAME		PENTAPLEX DILLESS SCROLL		150 PRODUCTION DRIVE, HARRISON, OHIO 45030 Ph: 888-769-7979 FAX: (513) 367-3125	
		MEDICAL PACKAGE		DVG NO	
		FLOW SCHEMATIC		MSP1505X5	
				SIZE D	

- NOTES:
- 1) PIPING TO THE INLET BY OTHERS AND TO BE PER NFPA99 4-3.1.1.9(b)
 - 2) INSTRUMENTS DOWN STREAM OF SOURCE VALVE TO BE SUPPLIED BY OTHERS.
 - 3) MINIMUM RECOMMENDED INLET PIPE SIZE IS 4"

8 7 6 5 4 3 2 1

8 7 6 5 4 3 2 1

MSP1505X5.dwg