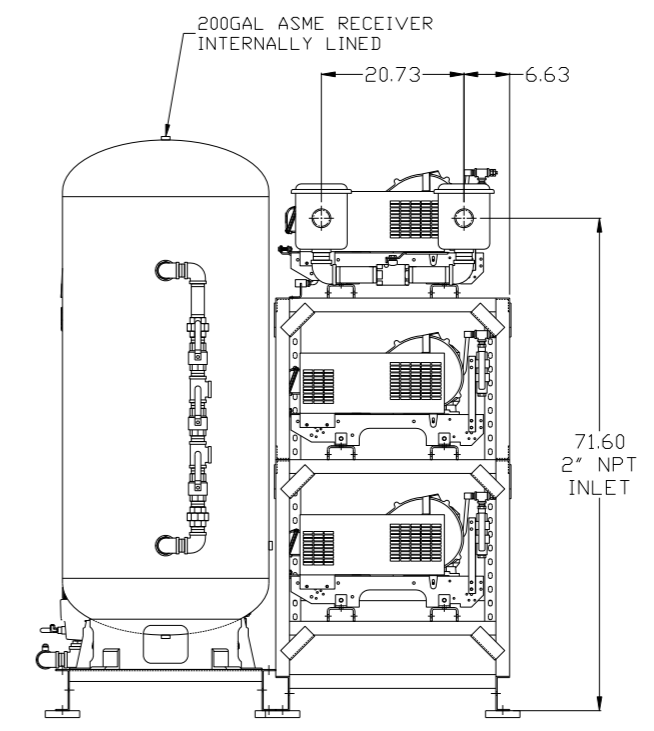
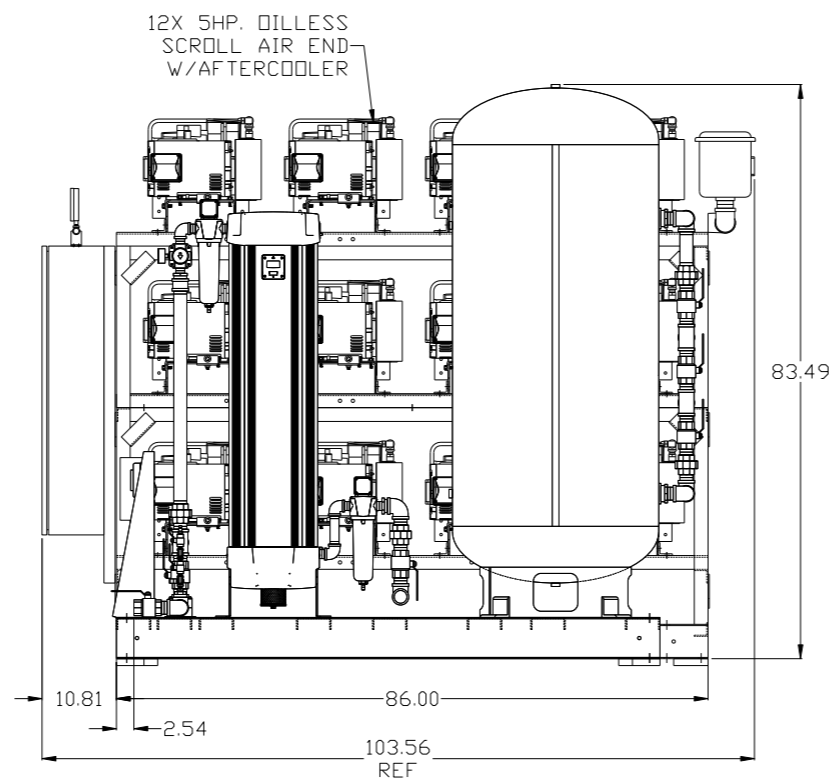
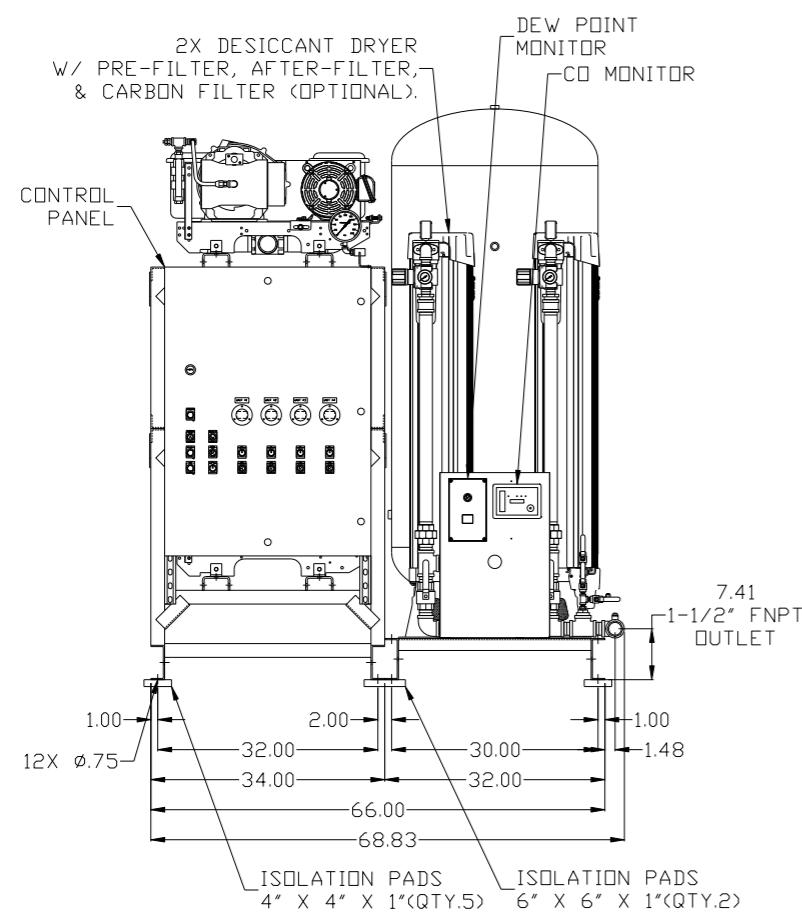
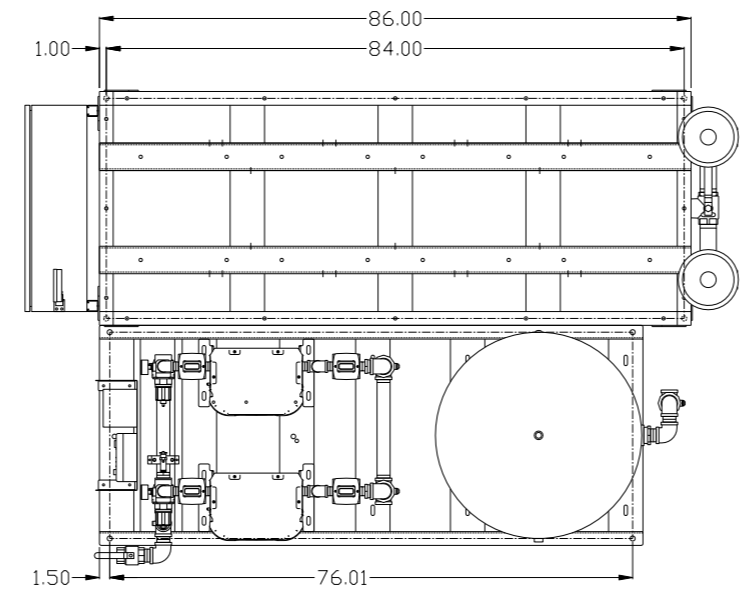


REV	ZONE	REVISION	DATE	ECN	NAME	CHKD
B-1	ALL	RELEASE TO PRODUCTION	08/16/06	21555	RSN	DMS
C-1	A-B	REMOVE MIN CLEARANCE NOTE.	07/02/07	21669	DMS	GES
D-1	ALL	ADDED TOP VIEW	8/9/07	21669	AEK	GES
E-1	C3,D4	ADDED ISO VALVE, HANG TAG & TANK GAUGE ADDED 75 PSI SRV	04/23/08	21907	DMS	GES
E-2	ALL	UPDATED BUILD & FLOW TO CURRENT STANDARDS	10/1/08	21907	AEK	GES
F-1	ALL	UPDATED DEW POINT MONITOR & BASE FRAMES	8/31/09	22127	AEK	GES
F-2	2 ALL	UPDATED PIPE SIZES	10/22/09	22127	AEK	GES
G-1	ALL	UPDATED MULTI-SCROLL FRAMES	4/27/10	22405	AEK	GES
H-1	ALL	ADDED SHEETS 3 THRU 5	12/17/10	22348	AEK	GES
J-1	1 C6	ADDED FILTER CALL-OUTS TO DRYER CALL-OUT	8/19/11	22546	AEK	GES
K-1	ALL	ADDED PBM/HMI SHEETS	6/8/12	22723	AEK	GES
L-1	2 ALL	CORRECTED/ADDED FLEX LINES	2/25/13	PXEC0009	AEK	GES
M-1	2 AB-DE	CORRECTED INLET PLUMBING SIZE	4/17/13	PXEC0030	AEK	GES
N-1	2 D4	MOVED PRESSURE SENSING LOCATION	7/11/14	PXEC0071	AEK	GES
P-1	2 C5	CHANGED 1-1/2" PIPE TO 1-1/4" FLEX HDSE	12/16/16	PXEC0139	AEK	GES
Q-1	1 ALL	UPDATED TO HAND DRYERS	8/10/17	PXEC0174	AEK	GES

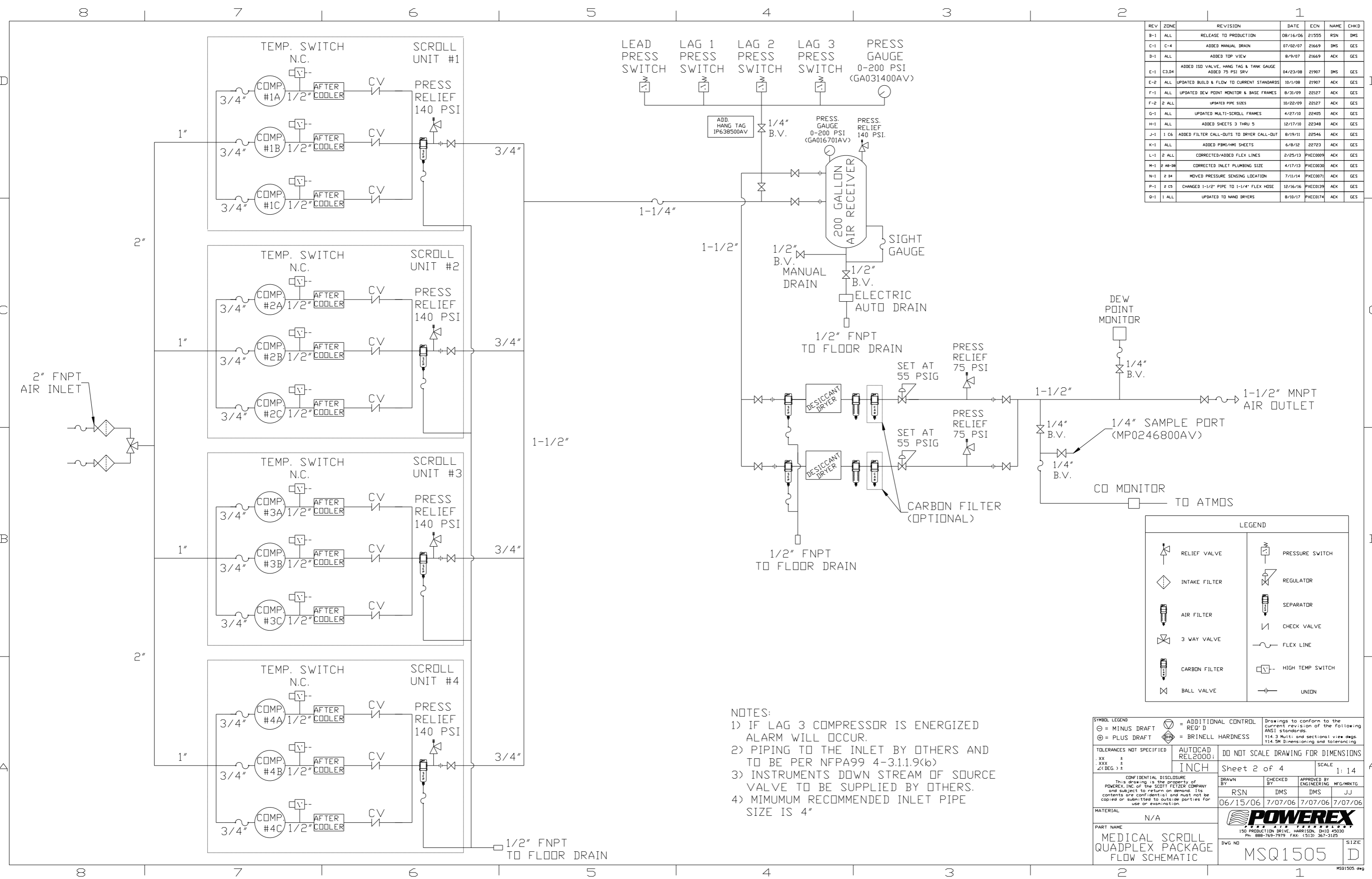


NOTE: SYSTEM DESIGNED IN COMPLIANCE WITH US NFPA'99, LATEST EDITION.

NOTE: A MINIMUM OF 24" CLEARANCE IS RECOMMENDED AROUND THE ENTIRE UNIT.

SYMBOL LEGEND ⊖ = MINUS DRAFT ⊕ = PLUS DRAFT TOLERANCES NOT SPECIFIED: .XX ± .XXX ± \angle (DEG) ±		= ADDITIONAL CONTROL REQ'D = BRINELL HARDNESS		Drawings to conform to the current revision of the following ANSI standards: Y14.3 Multi and sectional view dgs. Y14.5M Dimensioning and tolerancing	
AUTOCAD REL2000: INCH		DO NOT SCALE DRAWING FOR DIMENSIONS Sheet 1 of 4 SCALE: 1:14		CONFIDENTIAL DISCLOSURE This drawing is the property of POWEREX, INC. or the SCOTT FEITZER COMPANY and subject to return on demand. Its contents are confidential and must not be copied or submitted to outside parties for use or examination.	
DRAWN BY: RSN 06/15/06		CHECKED BY: DMS 7/07/06		APPROVED BY: ENGINEERING MFG/MKTG DMS JJ 7/07/06	
MATERIAL: N/A		 150 PRODUCTION DRIVE, HARRISON, OHIO 45030 Ph: 888-769-7979 FAX: (513) 367-3125		PART NAME: QUADPLEX OILLESS SCROLL 15HP, 200GAL. BASEMOUNT DUPLEX DESICCANT DWG NO: MSQ1505 SIZE: D	

REV	ZONE	REVISION	DATE	ECN	NAME	CHKD
B-1	ALL	RELEASE TO PRODUCTION	08/16/06	21555	RSN	DMS
C-1	C-4	ADDED MANUAL DRAIN	07/02/07	21669	DMS	GES
D-1	ALL	ADDED TOP VIEW	8/9/07	21669	AEK	GES
E-1	C3.D4	ADDED ISO VALVE, HANG TAG & TANK GAUGE ADDED 75 PSI SRV	04/23/08	21907	DMS	GES
E-2	ALL	UPDATED BUILD & FLOW TO CURRENT STANDARDS	10/1/08	21907	AEK	GES
F-1	ALL	UPDATED DEW POINT MONITOR & BASE FRAMES	8/31/09	22127	AEK	GES
F-2	2 ALL	UPDATED PIPE SIZES	10/22/09	22127	AEK	GES
G-1	ALL	UPDATED MULTI-SCROLL FRAMES	4/27/10	22405	AEK	GES
H-1	ALL	ADDED SHEETS 3 THRU 5	12/17/10	22348	AEK	GES
J-1	1 C6	ADDED FILTER CALL-OUTS TO DRYER CALL-OUT	8/19/11	22546	AEK	GES
K-1	ALL	ADDED PBM/HMI SHEETS	6/8/12	22723	AEK	GES
L-1	2 ALL	CORRECTED/ADDED FLEX LINES	2/25/13	PXEC0009	AEK	GES
M-1	2 AB-DE	CORRECTED INLET PLUMBING SIZE	4/17/13	PXEC0030	AEK	GES
N-1	2 B4	MOVED PRESSURE SENSING LOCATION	7/11/14	PXEC0071	AEK	GES
P-1	2 C5	CHANGED 1-1/2" PIPE TO 1-1/4" FLEX HDSE	12/16/16	PXEC0139	AEK	GES
Q-1	1 ALL	UPDATED TO HANG DRYERS	8/10/17	PXEC0174	AEK	GES

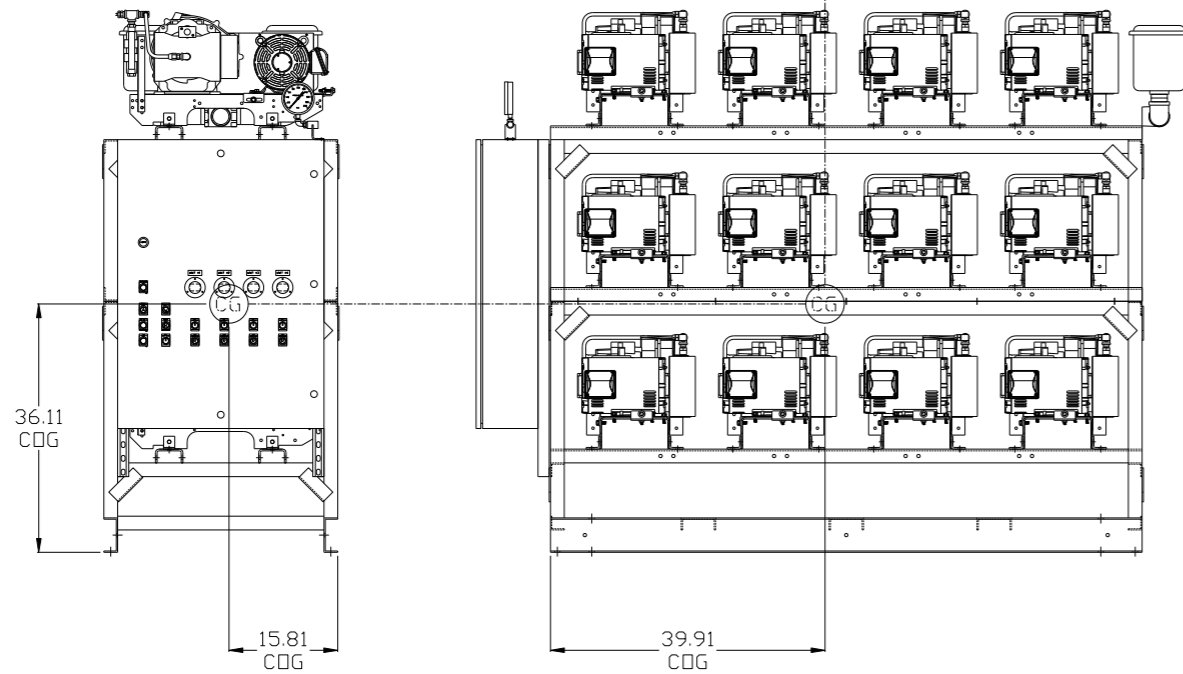
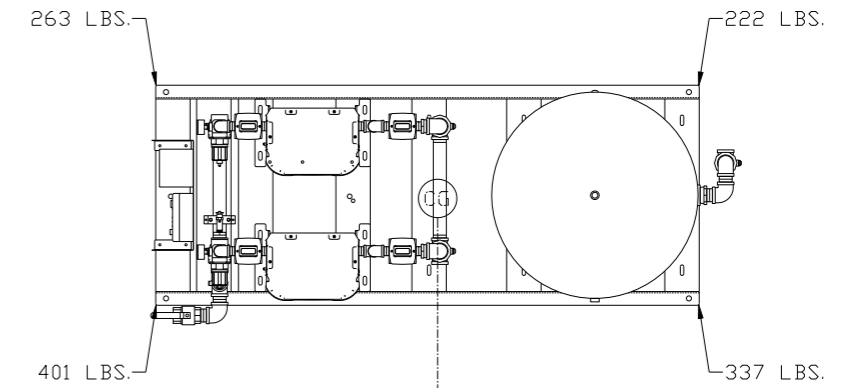
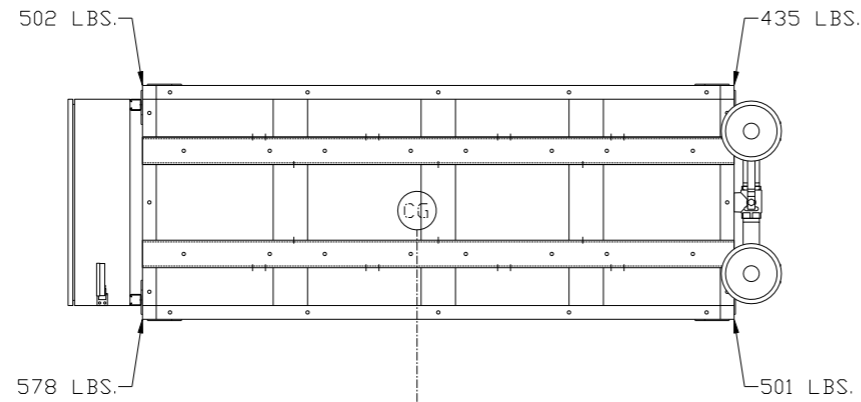


- NOTES:
- 1) IF LAG 3 COMPRESSOR IS ENERGIZED ALARM WILL OCCUR.
 - 2) PIPING TO THE INLET BY OTHERS AND TO BE PER NFPA99 4-3.1.1.9(b)
 - 3) INSTRUMENTS DOWN STREAM OF SOURCE VALVE TO BE SUPPLIED BY OTHERS.
 - 4) MINIMUM RECOMMENDED INLET PIPE SIZE IS 4"

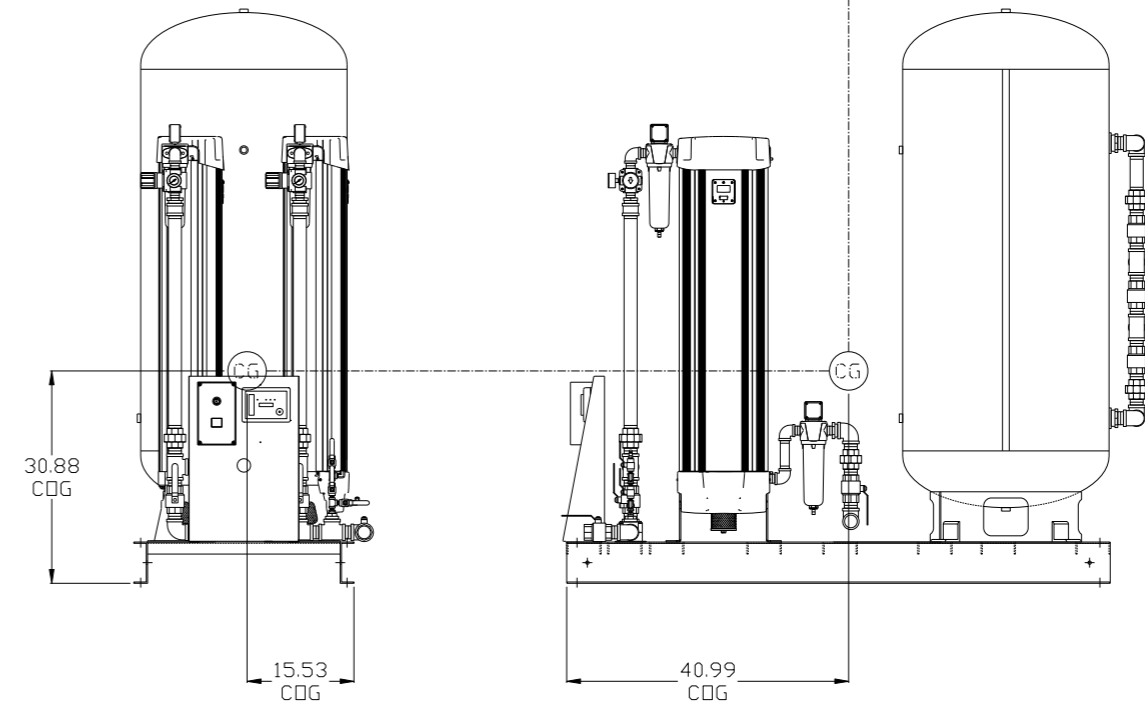
	RELIEF VALVE		PRESSURE SWITCH
	INTAKE FILTER		REGULATOR
	AIR FILTER		SEPARATOR
	3 WAY VALVE		CHECK VALVE
	CARBON FILTER		FLEX LINE
	BALL VALVE		HIGH TEMP SWITCH
			UNION

SYMBOL LEGEND		= ADDITIONAL CONTROL REQ'D		Drawings to conform to the current revision of the following ANSI standards:	
⊖	MINUS DRAFT	⊕	PLUS DRAFT	Y14.3	Multi and sectional view dgs.
TOLERANCES NOT SPECIFIED		AUTOCAD REL2000:		DO NOT SCALE DRAWING FOR DIMENSIONS	
.XX	±	INCH		Sheet 2 of 4	SCALE 1:14
.XXX	±				
<<DEG	±				
CONFIDENTIAL DISCLOSURE: This drawing is the property of POWEREX, INC. of the SCOTT FETZER COMPANY and subject to return on demand. Its contents are confidential and must not be copied or submitted to outside parties for use or examination.					
DRAWN BY		CHECKED BY	APPROVED BY	ENGINEERING MFG/MKTG	
RSN		DMS	DMS	JJ	
06/15/06		7/07/06	7/07/06	7/07/06	
MATERIAL		N/A			
PART NAME		MEDICAL SCROLL QUADPLEX PACKAGE FLOW SCHEMATIC			
DWG NO		MSQ1505		SIZE D	

REV	ZONE	REVISION	DATE	ECN	NAME	CHKD
H-1	ALL	ADDED SHEETS 3 THRU 5	12/17/10	22348	AEK	GES
J-1	1 C6	ADDED FILTER CALL-OUTS TO DRYER CALL-OUT	8/19/11	22546	AEK	GES
K-1	ALL	ADDED PBM/HMI SHEETS	6/8/12	22723	AEK	GES
L-1	2 ALL	CORRECTED/ADDED FLEX LINES	2/25/13	PXEC0009	AEK	GES
M-1	2 AB-D6	CORRECTED INLET PLUMBING SIZE	4/17/13	PXEC0030	AEK	GES
N-1	2 D4	MOVED PRESSURE SENSING LOCATION	7/11/14	PXEC0071	AEK	GES
P-1	2 C5	CHANGED 1-1/2" PIPE TO 1-1/4" FLEX HOSE	12/16/16	PXEC0139	AEK	GES
Q-1	1 ALL	UPDATED TO HAND DRYERS	8/10/17	PXEC0174	AEK	GES



COMPRESSOR SKID:
TOTAL WEIGHT: 2016 LBS
C.O.G. DIMENSIONS
X (FRONT): -15.81"
Y (RIGHT): 39.91"
Z (HEIGHT): 36.11"



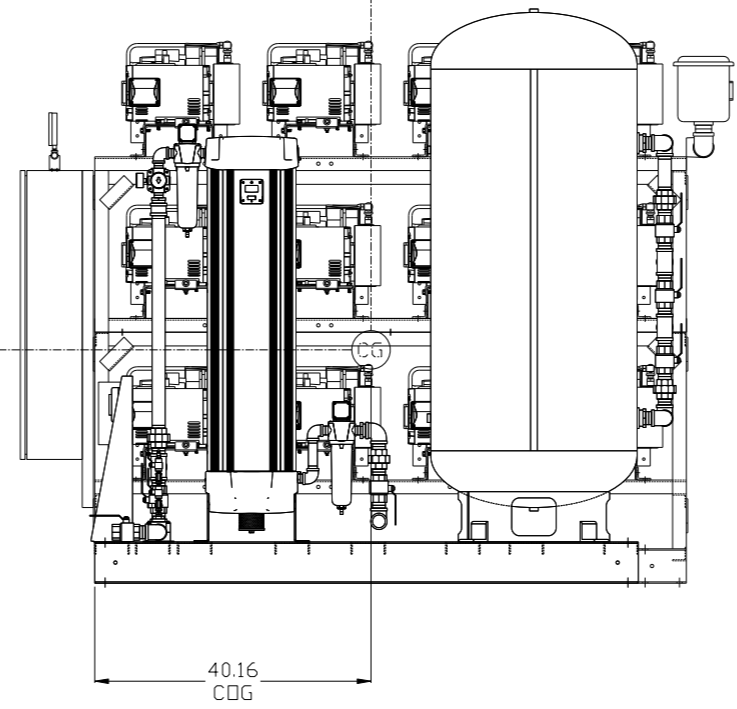
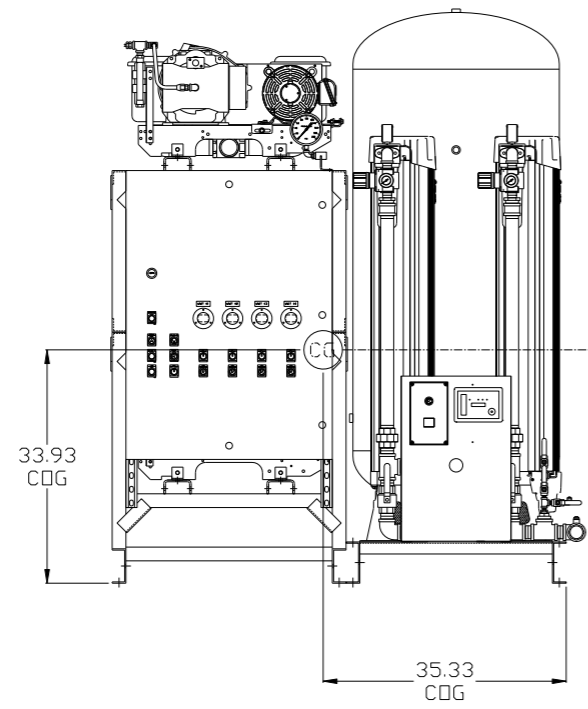
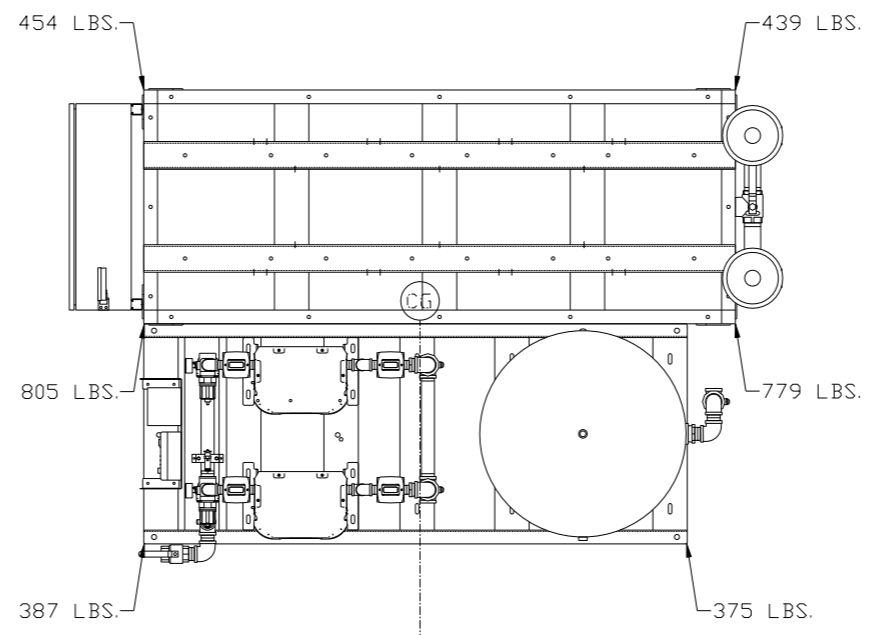
DRYER/TANK SKID:
TOTAL WEIGHT: 1223 LBS
C.O.G. DIMENSIONS
X (FRONT): -15.53"
Y (RIGHT): 40.99"
Z (HEIGHT): 30.88"

CG denotes center of gravity

SYMBOL LEGEND		⊖ = MINUS DRAFT	⊕ = PLUS DRAFT	⊕ = ADDITIONAL CONTROL REQ'D	⊕ = BRINELL HARDNESS	Drawings to conform to the current revision of the following ANSI standards: Y14.3 Multi and sectional view dgs. Y14.5M Dimensioning and tolerancing	
TOLERANCES NOT SPECIFIED		.XX ±	.XXX ±	<Z<DEG> ±	AUTOCAD REL2008 LT	DO NOT SCALE DRAWING FOR DIMENSIONS	
CONFIDENTIAL DISCLOSURE This drawing is the property of POWEREX, INC. of the SCOTT FELTZER COMPANY and subject to return on demand. Its contents are confidential and must not be copied or submitted to outside parties for use or examination.		DRAWN BY	CHECKED BY	APPROVED BY	ENGINEERING	MFG/MKTG	Sheet 3 of 4
MATERIAL		N/A	AEK	GES	DMS	JJ	SCALE 1:14
PART NAME		QUADPLEX OILLESS SCROLL 15HP, 200GAL. BASEMOUNT DUPLEX DESICCANT		12/17/10		12/17/10	12/17/10
DWG NO		MSQ1505		SIZE		D	

8 7 6 5 4 3 2 1

REV	ZONE	REVISION	DATE	ECN	NAME	CHKD
H-1	ALL	ADDED SHEETS 3 THRU 5	12/17/10	22348	AEK	GES
J-1	1 C6	ADDED FILTER CALL-OUTS TO DRYER CALL-OUT	8/19/11	22546	AEK	GES
K-1	ALL	ADDED PBM/HMI SHEETS	6/8/12	22723	AEK	GES
L-1	2 ALL	CORRECTED/ADDED FLEX LINES	2/25/13	PXEC0009	AEK	GES
M-1	2 AB-D6	CORRECTED INLET PLUMBING SIZE	4/17/13	PXEC0030	AEK	GES
N-1	2 D4	MOVED PRESSURE SENSING LOCATION	7/11/14	PXEC0071	AEK	GES
P-1	2 C5	CHANGED 1-1/2" PIPE TO 1-1/4" FLEX HOSE	12/16/16	PXEC0139	AEK	GES
Q-1	1 ALL	UPDATED TO HAND DRYERS	8/10/17	PXEC0174	AEK	GES



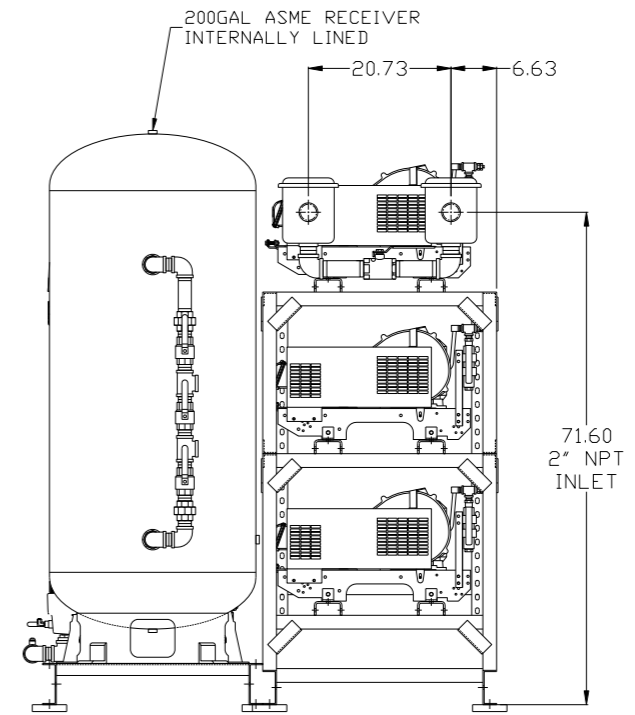
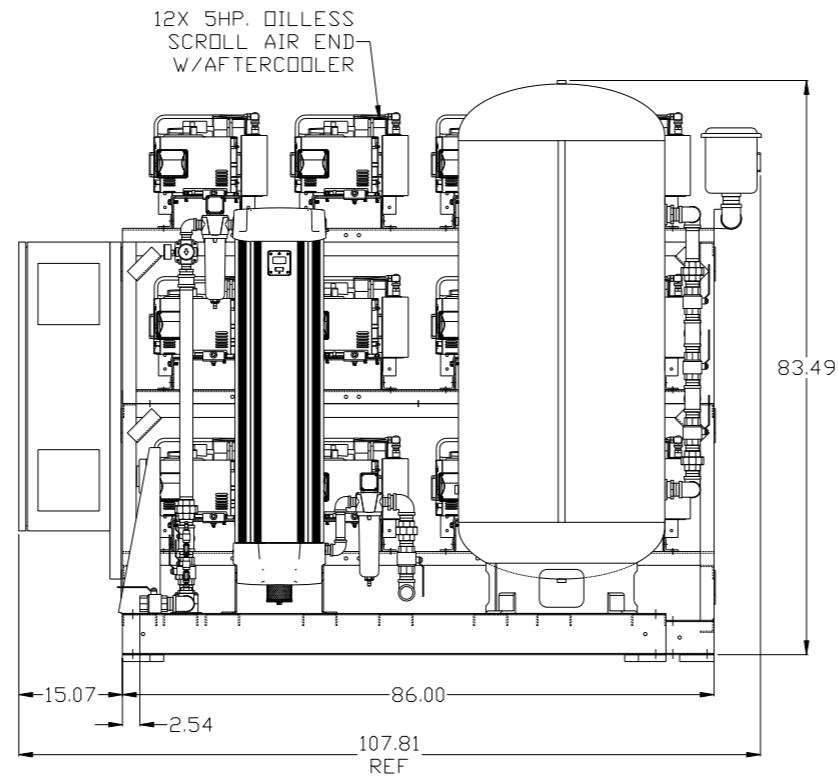
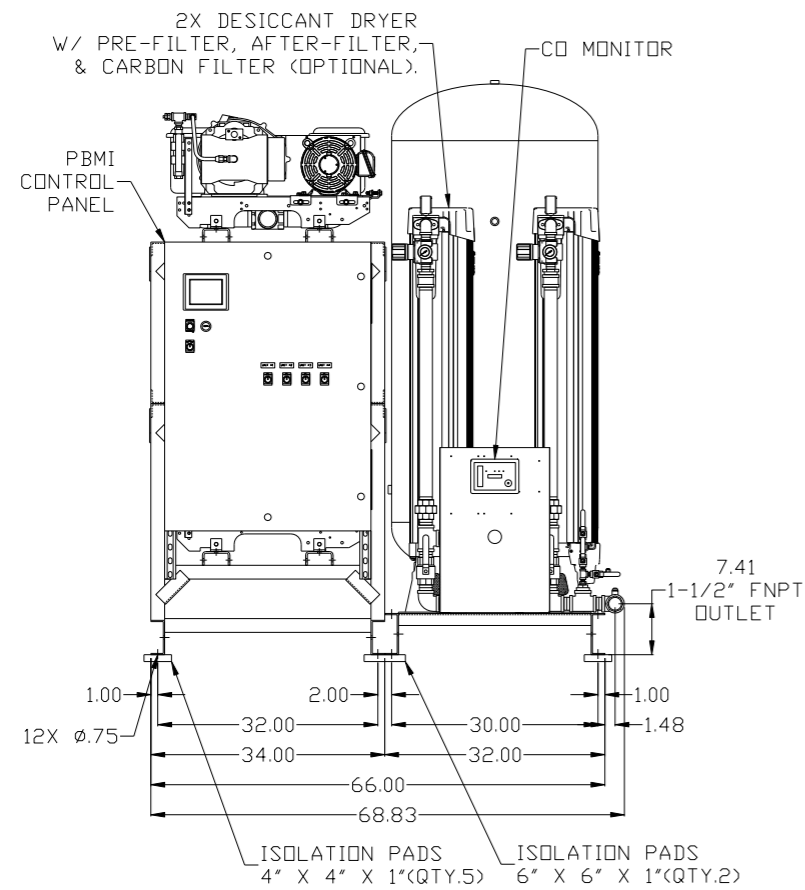
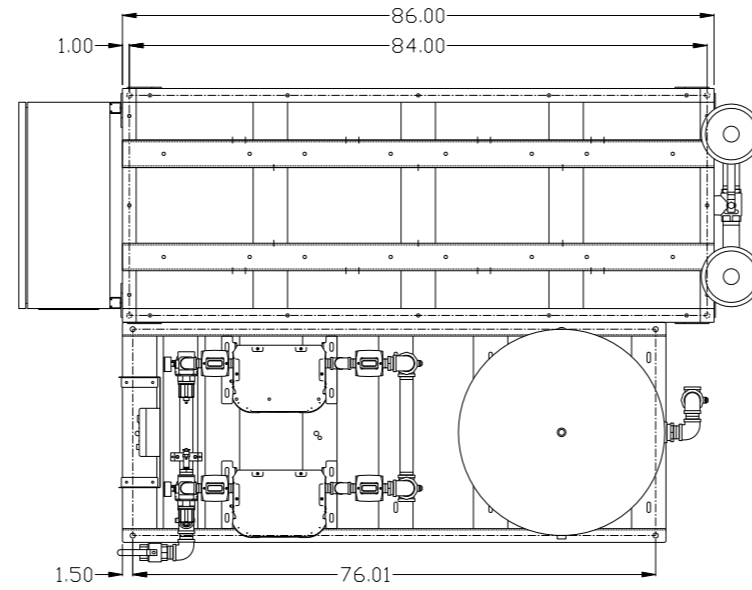
SYSTEM:
 TOTAL WEIGHT: 3239 LBS
 C.O.G. DIMENSIONS
 X (FRONT): -35.32"
 Y (RIGHT): 40.16
 Z (HEIGHT): 33.93"

CG denotes center of gravity

SYMBOL LEGEND ⊖ = MINUS DRAFT ⊕ = PLUS DRAFT TOLERANCES NOT SPECIFIED .XX ± .XXX ± \angle (DEG.) ±		= ADDITIONAL CONTROL REQ'D = BRINELL HARDNESS		Drawings to conform to the current revision of the following ANSI standards: Y14.3 Multi and sectional view dsgs. Y14.5M Dimensioning and tolerancing
AUTOCAD REL2008 LT INCH		DO NOT SCALE DRAWING FOR DIMENSIONS Sheet 4 of 4 SCALE 1: 14		
CONFIDENTIAL DISCLOSURE This drawing is the property of POWEREX, INC. of the SCOTT FETZER COMPANY and subject to return on demand. Its contents are confidential and must not be copied or submitted to outside parties for use or examination.		DRAWN BY AEK 12/17/10	CHECKED BY GES 12/17/10	APPROVED BY ENGINEERING MFG/MKTG DMS JJ 12/17/10
MATERIAL N/A		 150 PRODUCTION DRIVE, HARRISON, OHIO 45030 Ph 888-769-7979 FAX (513) 367-3125		
PART NAME QUADPLEX OILLESS SCROLL 15HP, 200GAL. BASEMOUNT DUPLEX DESICCANT		DWG NO MSQ1505	SIZE D	

8 7 6 5 4 3 2 1

REV	ZONE	REVISION	DATE	ECN	NAME	CHKD
K-1	ALL	ADDED PBMI/HMI SHEETS	6/8/12	22723	AEK	GES
L-1	2 ALL	CORRECTED/ADDED FLEX LINES	2/25/13	PXEC0009	AEK	GES
M-1	2 AB-BB	CORRECTED INLET PLUMBING SIZE	4/17/13	PXEC0030	AEK	GES
N-1	2 BA	MOVED PRESSURE SENSING LOCATION	7/11/14	PXEC0071	AEK	GES
P-1	2 CS	CHANGED 1-1/2" PIPE TO 1-1/4" FLEX HOSE	12/16/16	PXEC0139	AEK	GES
Q-1	1 ALL	UPDATED TO NANO DRYERS	8/10/17	PXEC0174	AEK	GES

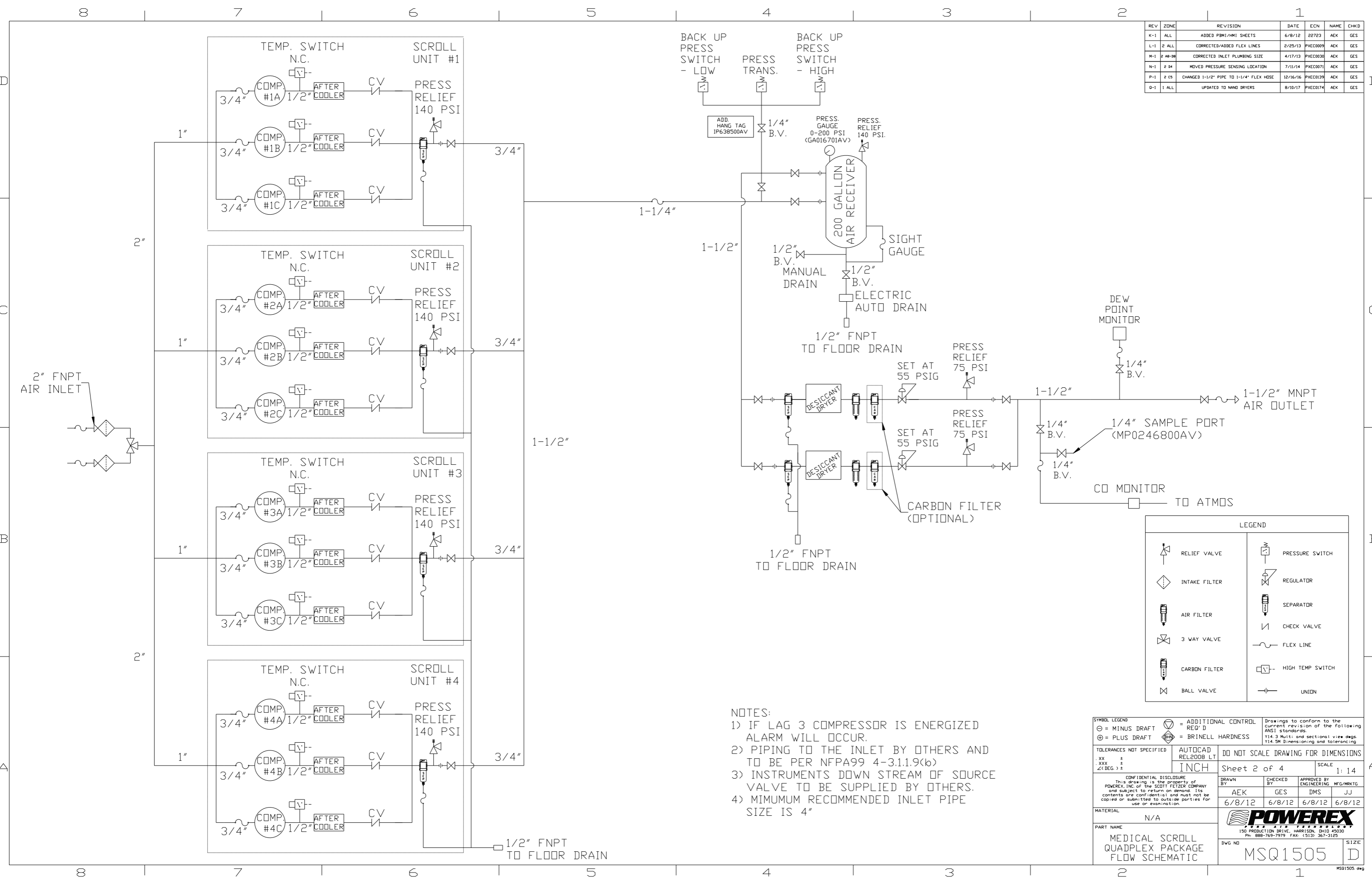


NOTE: SYSTEM DESIGNED IN COMPLIANCE WITH US NFPA'99, LATEST EDITION.

NOTE: A MINIMUM OF 24" CLEARANCE IS RECOMMENDED AROUND THE ENTIRE UNIT.

SYMBOL LEGEND ⊖ = MINUS DRAFT ⊕ = PLUS DRAFT TOLERANCES NOT SPECIFIED .XX ± .XXX ± \angle (DEG) ±		⊕ = ADDITIONAL CONTROL REQ'D HB = BRINELL HARDNESS	Drawings to conform to the current revision of the following ANSI standards: Y14.3 Multi and sectional view dgs. Y14.5M Dimensioning and tolerancing
AUTOCAD REL2008 LT INCH		DO NOT SCALE DRAWING FOR DIMENSIONS Sheet 1 of 4 SCALE 1:14	
CONFIDENTIAL DISCLOSURE This drawing is the property of POWEREX, INC. of the SCOTT FELTZER COMPANY and subject to return on demand. Its contents are confidential and must not be copied or submitted to outside parties for use or examination.			
DRAWN BY AEK	CHECKED BY GES	APPROVED BY DMS	MFG/MKTG JJ
MATERIAL N/A		 150 PRODUCTION DRIVE, HARRISON, OHIO 45030 Ph 888-769-7979 FAX (513) 367-3125	
PART NAME QUADPLEX OILLESS SCROLL 15HP 200GAL BASEMOUNT DUPLEX DESICCANT		DWG NO MSQ1505	SIZE D

REV	ZONE	REVISION	DATE	ECN	NAME	CHKD
K-1	ALL	ADDED PBM/HMI SHEETS	6/8/12	22723	AEK	GES
L-1	2 ALL	CORRECTED/ADDED FLEX LINES	2/25/13	PXEC0009	AEK	GES
M-1	2 AB-BB	CORRECTED INLET PLUMBING SIZE	4/17/13	PXEC0030	AEK	GES
N-1	2 BA	MOVED PRESSURE SENSING LOCATION	7/11/14	PXEC0071	AEK	GES
P-1	2 CS	CHANGED 1-1/2" PIPE TO 1-1/4" FLEX HOSE	12/16/16	PXEC0139	AEK	GES
Q-1	1 ALL	UPDATED TO HANG DRYERS	8/10/17	PXEC0174	AEK	GES

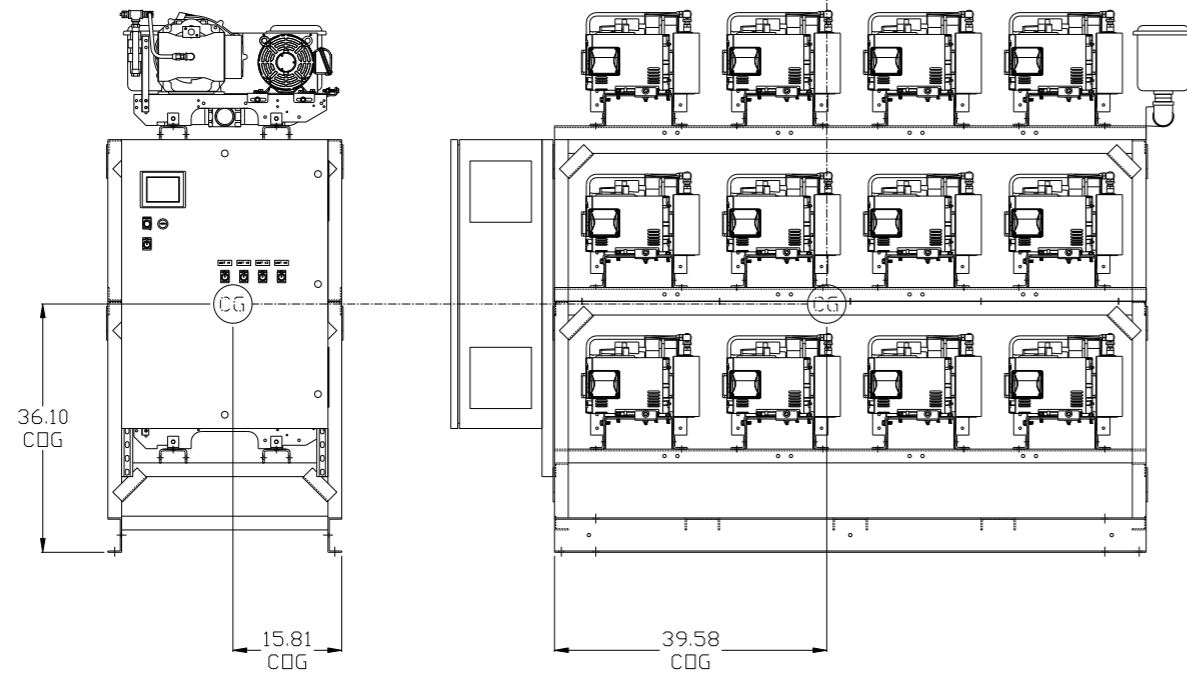
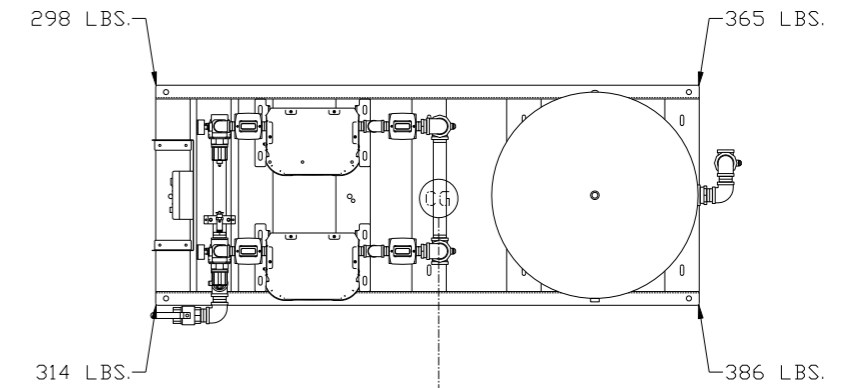
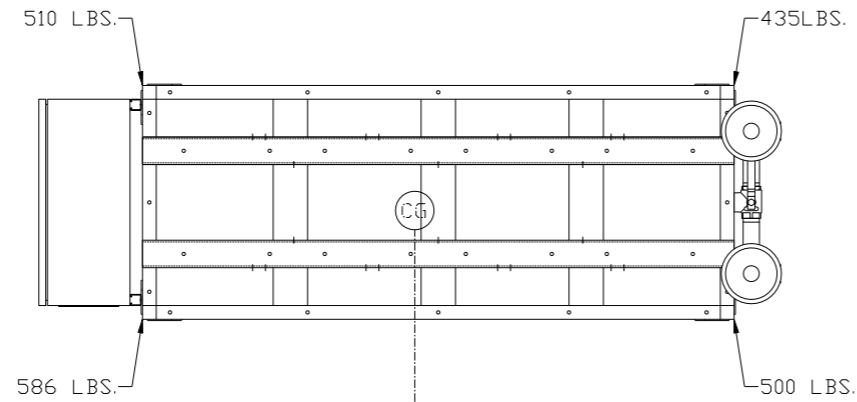


- NOTES:
- 1) IF LAG 3 COMPRESSOR IS ENERGIZED ALARM WILL OCCUR.
 - 2) PIPING TO THE INLET BY OTHERS AND TO BE PER NFPA99 4-3.1.1.9(b)
 - 3) INSTRUMENTS DOWN STREAM OF SOURCE VALVE TO BE SUPPLIED BY OTHERS.
 - 4) MINIMUM RECOMMENDED INLET PIPE SIZE IS 4"

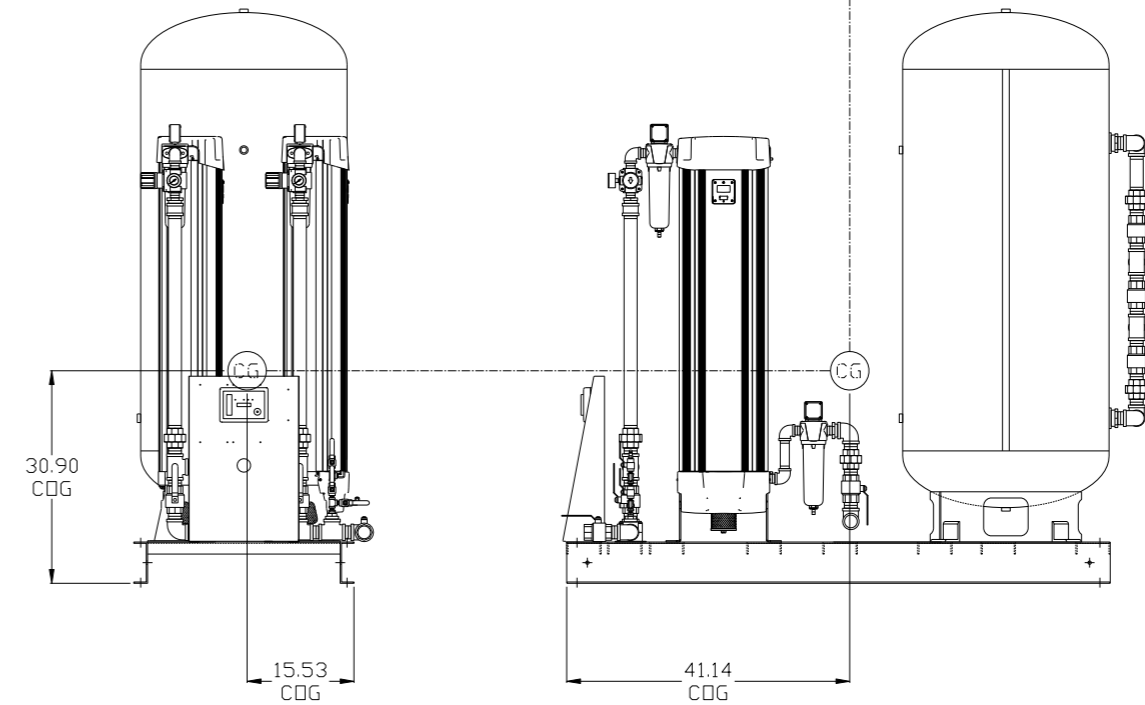
LEGEND	
	RELIEF VALVE
	INTAKE FILTER
	AIR FILTER
	3 WAY VALVE
	CARBON FILTER
	BALL VALVE
	PRESSURE SWITCH
	REGULATOR
	SEPARATOR
	CHECK VALVE
	FLEX LINE
	HIGH TEMP SWITCH
	UNION

SYMBOL LEGEND			ADDITIONAL CONTROL REQ'D	Drawings to conform to the current revision of the following ANSI standards:	
	MINUS DRAFT		BRINELL HARDNESS	Y14.3 Multi and sectional view dsgs. Y14.5M Dimensioning and tolerancing	
TOLERANCES NOT SPECIFIED		AUTOCAD REL2008 LT	DO NOT SCALE DRAWING FOR DIMENSIONS		
.XX ±		INCH	Sheet 2 of 4	SCALE 1:14	
.XXX ±					
<< DEG ±					
CONFIDENTIAL DISCLOSURE This drawing is the property of POWEREX, INC. or the SCOTT FETZER COMPANY and subject to return on demand. Its contents are confidential and must not be copied or submitted to outside parties for use or examination.					
DRAWN BY		CHECKED BY	APPROVED BY	ENGINEERING MFG/MKTG	
AEK		GES	DMS	JJ	
6/8/12		6/8/12	6/8/12	6/8/12	
MATERIAL N/A					
PART NAME					
MEDICAL SCROLL QUADPLEX PACKAGE FLOW SCHEMATIC			150 PRODUCTION DRIVE, HARRISON, OHIO 45030 Ph 888-769-7979 FAX (513) 367-3125		
DWG NO			SIZE		
MSQ1505			D		

REV	ZONE	REVISION	DATE	ECN	NAME	CHKD
H-1	ALL	ADDED SHEETS 3 THRU 5	12/17/10	22348	AEK	GES
J-1	1 C6	ADDED FILTER CALL-OUTS TO DRYER CALL-OUT	8/19/11	22546	AEK	GES
K-1	ALL	ADDED PBM/HMI SHEETS	6/8/12	22723	AEK	GES
L-1	2 ALL	CORRECTED/ADDED FLEX LINES	2/25/13	PXEC0009	AEK	GES
M-1	2 AB-D6	CORRECTED INLET PLUMBING SIZE	4/17/13	PXEC0030	AEK	GES
N-1	2 D4	MOVED PRESSURE SENSING LOCATION	7/11/14	PXEC0071	AEK	GES
P-1	2 C5	CHANGED 1-1/2" PIPE TO 1-1/4" FLEX HOSE	12/16/16	PXEC0139	AEK	GES
Q-1	1 ALL	UPDATED TO HAND DRYERS	8/10/17	PXEC0174	AEK	GES



COMPRESSOR SKID:
TOTAL WEIGHT: 2031 LBS
C.O.G. DIMENSIONS
X (FRONT): -15.81"
Y (RIGHT): 39.58"
Z (HEIGHT): 36.10"



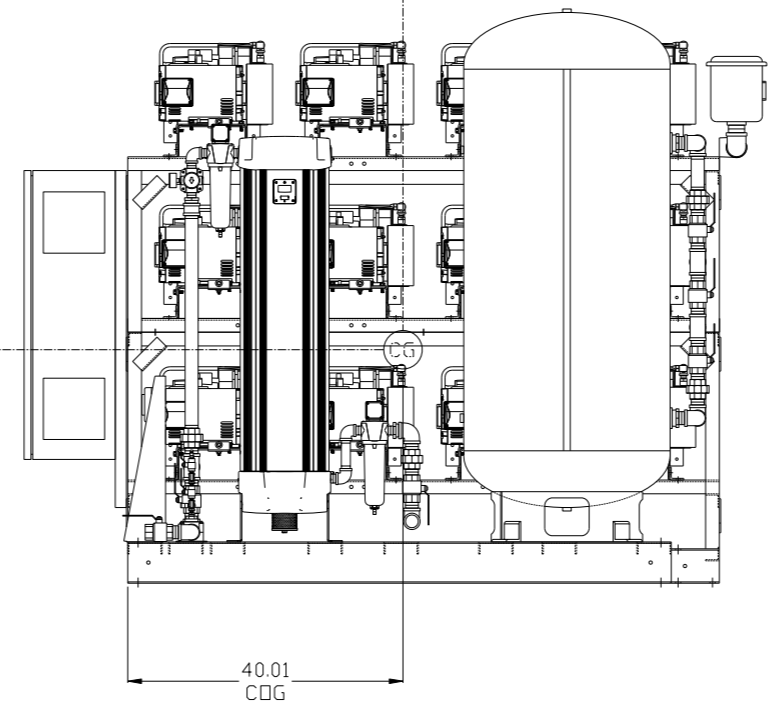
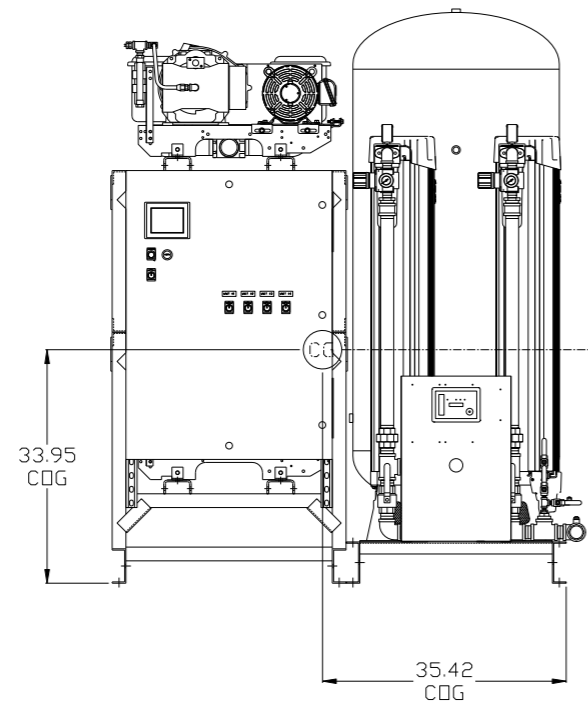
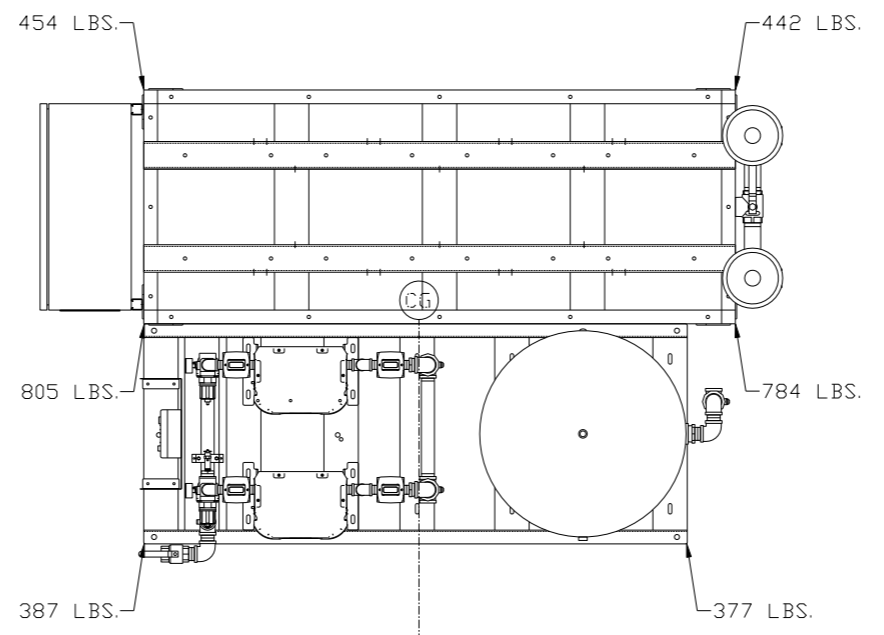
DRYER/TANK SKID:
TOTAL WEIGHT: 1218 LBS
C.O.G. DIMENSIONS
X (FRONT): -15.53"
Y (RIGHT): 41.14"
Z (HEIGHT): 30.90"

CG denotes center of gravity

SYMBOL LEGEND		= MINUS DRAFT		= PLUS DRAFT		= ADDITIONAL CONTROL REQ'D		= BRINELL HARDNESS		Drawings to conform to the current revision of the following ANSI standards: Y14.3 Multi and sectional view dsgs. Y14.5M Dimensioning and tolerancing	
TOLERANCES NOT SPECIFIED		AUTOCAD REL2008 LT		DO NOT SCALE DRAWING FOR DIMENSIONS		Sheet 3 of 4		SCALE		1: 14	
.XX ± .XXX ± Z (DEG) ±		INCH		DRAWN BY		CHECKED BY		APPROVED BY		ENGINEERING MFG/MRKTG	
CONFIDENTIAL DISCLOSURE This drawing is the property of POWEREX, INC. or the SCOTT FELTZER COMPANY and subject to return on demand. Its contents are confidential and must not be copied or submitted to outside parties for use or examination.		AEK		GES		DMS		JJ		12/17/10 12/17/10 12/17/10 12/17/10	
MATERIAL		N/A		POWEREX		150 PRODUCTION DRIVE, HARRISON, OHIO 45030		Ph 888-769-7979 FAX (513) 367-3125		SIZE	
PART NAME		QUADPLEX OILLESS SCROLL 15HP, 200GAL. BASEMOUNT DUPLEX DESICCANT		DWG NO		MSQ1505		D		MSQ1505.dwg	

8 7 6 5 4 3 2 1

REV	ZONE	REVISION	DATE	ECN	NAME	CHKD
H-1	ALL	ADDED SHEETS 3 THRU 5	12/17/10	22348	AEK	GES
J-1	1 C6	ADDED FILTER CALL-OUTS TO DRYER CALL-OUT	8/19/11	22546	AEK	GES
K-1	ALL	ADDED PBM/HMI SHEETS	6/8/12	22723	AEK	GES
L-1	2 ALL	CORRECTED/ADDED FLEX LINES	2/25/13	PXEC0009	AEK	GES
M-1	2 AB-D6	CORRECTED INLET PLUMBING SIZE	4/17/13	PXEC0030	AEK	GES
N-1	2 D4	MOVED PRESSURE SENSING LOCATION	7/11/14	PXEC0071	AEK	GES
P-1	2 C5	CHANGED 1-1/2" PIPE TO 1-1/4" FLEX HOSE	12/16/16	PXEC0139	AEK	GES
Q-1	1 ALL	UPDATED TO HAND DRYERS	8/10/17	PXEC0174	AEK	GES



SYSTEM:
 TOTAL WEIGHT: 3249 LBS
 C.O.G. DIMENSIONS
 X (FRONT): -35.42"
 Y (RIGHT): 40.01
 Z (HEIGHT): 33.95"

(CG) denotes center of gravity

SYMBOL LEGEND ⊖ = MINUS DRAFT ⊕ = PLUS DRAFT TOLERANCES NOT SPECIFIED .XX ± .XXX ± \angle (DEG.) ±		= ADDITIONAL CONTROL REQ'D = BRINELL HARDNESS		Drawings to conform to the current revision of the following ANSI standards: Y14.3 Multi and sectional view dsgs. Y14.5M Dimensioning and tolerancing
AUTOCAD REL2008 LT INCH		DO NOT SCALE DRAWING FOR DIMENSIONS Sheet 4 of 4 SCALE 1: 14		
CONFIDENTIAL DISCLOSURE This drawing is the property of POWEREX, INC. of the SCOTT FETZER COMPANY and subject to return on demand. Its contents are confidential and must not be copied or submitted to outside parties for use or examination.		DRAWN BY AEK	CHECKED BY GES	APPROVED BY ENGINEERING MFG/MRKTG DMS JJ
MATERIAL N/A		12/17/10	12/17/10	12/17/10 12/17/10
PART NAME QUADPLEX OILLESS SCROLL 15HP, 200GAL. BASEMOUNT DUPLEX DESICCANT		 150 PRODUCTION DRIVE, HARRISON, OHIO 45030 Ph 888-769-7979 FAX (513) 367-3125		DWG NO MSQ1505 SIZE D

8 7 6 5 4 3 2 1