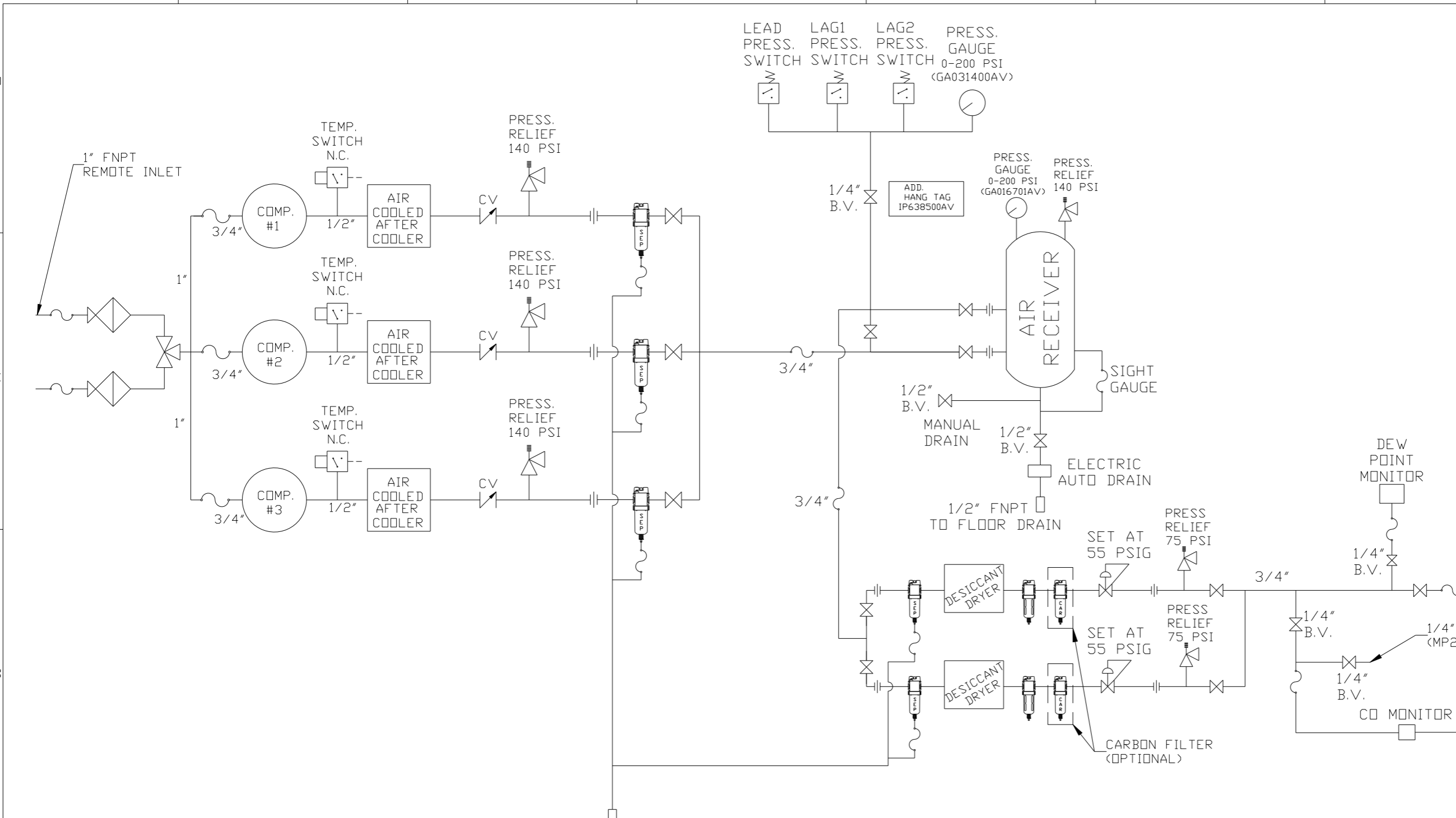


REV	ZONE	REVISION	DATE	ECN	NAME	CHKD
B-1	ALL	RELEASE TO PRODUCTION	8/31/01		GES	DW
B-2	2C-5	CHANGED UNIT TO MIN BASE	9/24/02		GES	
C-1	2C5-7	UPDATED UNIT TO CURRENT PRD	3/22/04	20787	GES	GES
D-1	1B2-4	ADDED UNIONS, MED CON CD MTR	3/22/04	20787	GES	GES
E-1	A3	REVISED PRESSURE SWITCH SETTINGS, REMOVE 1 BALL VALVE	05/06/07	21163	DMS	DMS
F-1	B2	REVISED DEW POINT SENSOR MOUNTING	01/31/06	21438	DMS	DMS
F-2	B2	REVISED CO SAMPLE PORT	5/11/06	21438	GES	GES
G1	B2,C6	REPLACED DIV VALVES WITH B.V & 140PSI SRV ADDED 75PSI SRV	01/14/08	21907	DMS	GES
G-2	C4	ADDED ISO VALVE, HANG TAG & TANK GAUGE	04/08/08	21907	DMS	GES
G-3	ALL	UPDATED LAYOUT & FLOW TO CURRENT STANDARDS	9/25/08	21907	AEK	GES
H-1	1 ALL	RELOCATED CO & DEW POINT MONITORS PER PRODUCTION	4/1/09	22127	AEK	GES
J-1	C-2	REVISED TO NEW DEW POINT MOUNTING	05/28/09	22127	DMS	GES
K-1	ALL	UPDATED TO POWEREX DRYER	8/17/09	22129	AEK	GES
L-1	3ALL	ADDED SHEET 3, C.D.G.	7/20/10	22348	GES	DMS
L-2	1 ALL	ADDED OUTLET LOCATION DIMENSIONS	10/8/10	22348	AEK	GES
M-1	ALL	ADDED P&ID SHEETS	10/18/11	22609	AEK	GES
N-1	107, 207	REMOVED MAIN DISCONNECT FROM STANDARD PANEL FACE	5/11/12	22752	AEK	GES
P-1	1E-8	ADDED FLEX HOSE TO INLET FILTERS	7/13/12	22723	GES	DMS
Q-1	2 ALL	ADDED MISSING FLEX LINES TO FLOW	8/14/12	PXEC0009	AEK	GES
R-1	4ALL	ADDED SHEET 4, SHIP VIEW	8/22/12	22723	AEK	DMS
S-1	2 C4	MOVED PRESSURE SENSING LOCATION	5/6/14	PXEC0071	AEK	GES
T-1	2 C5	CORRECTED 1/2" HOSE TO 3/4" HOSE	6/26/15	PXEC0093	AEK	GES

SYMBOL LEGEND ⊖ = MINUS DRAFT ⊕ = PLUS DRAFT ⊕ = ADDITIONAL CONTROL REQ'D HRC = BRINELL HARDNESS		Drawings to conform to the current revision of the following ANSI standards: Y14.3 Multi and sectional view dgs. Y14.5M Dimensioning and tolerancing	
TOLERANCES NOT SPECIFIED .XX ± .XXX ± \angle (DEG.) ±		AUTOCAD REL2000 INCH DO NOT SCALE DRAWING FOR DIMENSIONS Sheet 2 of 4 SCALE 1:10	
CONFIDENTIAL DISCLOSURE This drawing is the property of the CAMPBELL GROUP OF THE SCOTT FETZER COMPANY and subject to return on demand. Its contents are confidential and must not be copied or submitted to outside parties for use or examination.		DRAWN BY: GES CHECKED BY: DWW APPROVED BY: DWW 8/31/01 8/31/01 8/31/01	
MATERIAL: N/A		 150 PRODUCTION DRIVE, HARRISON, OHIO 45030 Ph: 888-769-7979 Fax: (513) 367-3125	
PART NAME: 3HP SCROLL TRIPLEX 80GAL DUAL DESICCANT		DWG NO: MST0503 SIZE: D	

NOTE: SYSTEM DESIGNED IN COMPLIANCE WITH US NFPA'99, LATEST EDITION.

REV	ZONE	REVISION	DATE	ECN	NAME	CHKD
A-1	ALL	RELEASE FOR APPROVAL	5/4/01	18644	GES	DW
B-1	ALL	RELEASE TO PRODUCTION	5/15/01	18644	GES	DW
B-2	2-ALL	ADDED SHEET 2	8/31/01	18644	GES	DW
C-1	1B-4	REM DIV VALVE, ADD SAFETY BALL VALVES	8/20/02	19904	GES	DW
D-1	1B2-4	ADDED UNIONS, MED CON CD MTR.	3/22/04	20787	GES	GES
E-1	A3	REVISED PRESSURE SWITCH SETTINGS, REMOVE 1 BALL VALVE	05/06/07	21163	DMS	DMS
F-1	B2	REVISED DEW POINT SENSOR MOUNTING	01/31/06	21438	DMS	DMS
F-2	B2	REVISED CO SAMPLE PORT	5/11/06	21438	GES	GES
G1	B2,C6	REPLACED DIV VALVES WITH B.V. & 140PSI SRV ADDED 75PSI SRV	01/14/08	21907	DMS	GES
G-2	C4	ADDED ISO VALVE, HANG TAG & TANK GAUGE	04/09/08	21907	DMS	GES
G-3	ALL	UPDATED LAYOUT & FLOW TO CURRENT STANDARDS	9/25/08	21907	AEK	GES
H-1	1 ALL	RELOCATED CD & DEW POINT MONITORS PER PRODUCTION	4/1/09	22127	AEK	GES
J-1	C-2	REVISED TO NEW DEW POINT MOUNTING	05/28/09	22127	DMS	GES
K-1	ALL	UPDATED TO POWVEREX DRYER	8/17/09	22120	AEK	GES
L-1	3ALL	ADDED SHEET 3, C.D.G.	7/20/10	22348	GES	DMS
L-2	1 ALL	ADDED OUTLET LOCATION DIMENSIONS	10/8/10	22348	AEK	GES
M-1	ALL	ADDED P&ID SHEETS	10/18/11	22609	AEK	GES
N-1	1D7, 3D7	REMOVED MAIN DISCONNECT FROM STANDARDS PANEL FACE	5/11/12	22752	AEK	GES
P-1	1C-8	ADDED FLEX HOSE TO INLET FILTERS	7/13/12	22723	GES	DMS
Q-1	2 ALL	ADDED MISSING FLEX LINES TO FLOW	8/14/12	PXEC009	AEK	GES
R-1	4ALL	ADDED SHEET 4, SHIP VIEW	8/22/12	22723	GES	DMS
S-1	2 C4	MOVED PRESSURE SENSING LOCATION	5/6/14	PXEC007	AEK	GES
T-1	2 C5	CORRECTED 1/2" HOSE TO 3/4" HOSE	6/26/15	PXEC009	AEK	GES

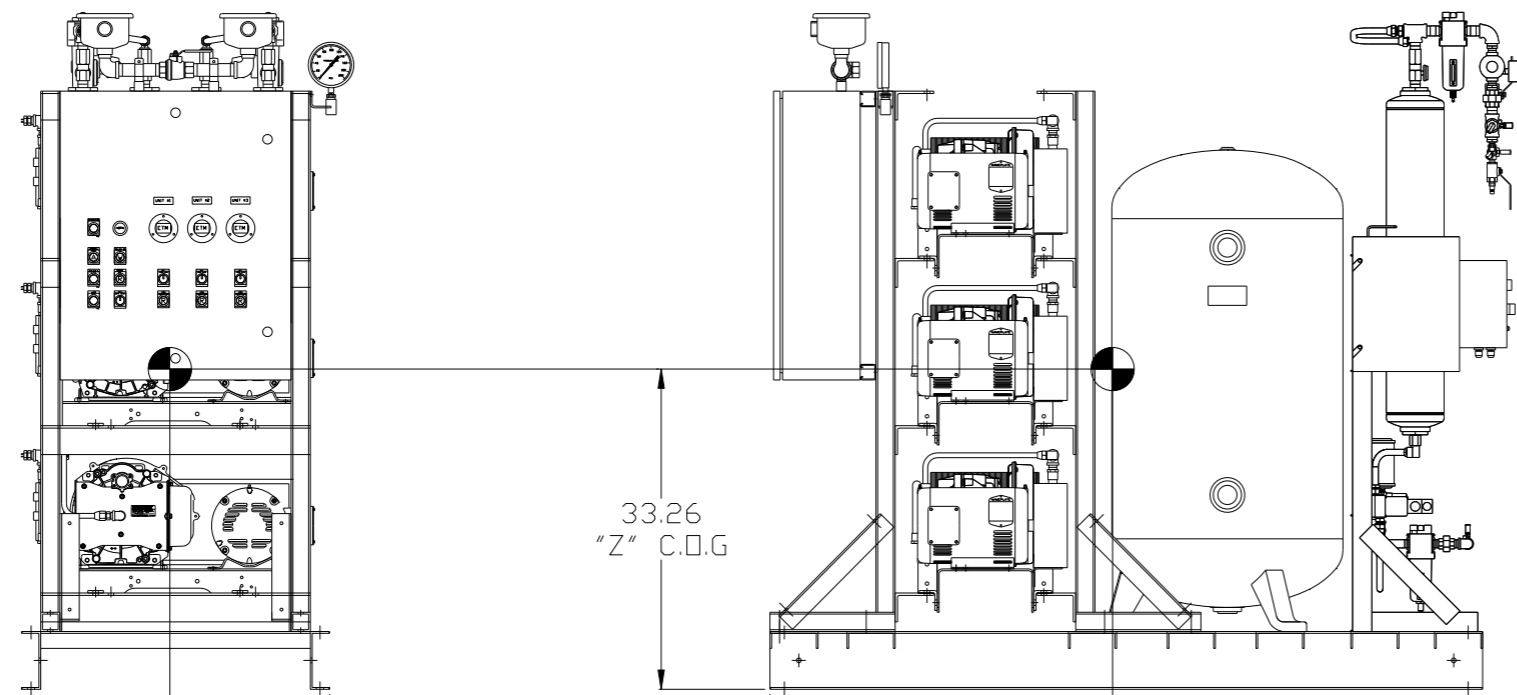


LEGEND	
	RELIEF VALVE
	INTAKE FILTER
	AIR FILTER
	3 WAY VALVE
	CARBON FILTER
	BALL VALVE
	PRESSURE SWITCH
	REGULATOR
	SEPARATOR
	CHECK VALVE
	FLEX LINE
	HIGH TEMP SWITCH
	UNION

NOTES:
 1) IF LAG 2 COMPRESSOR IS ENERGIZED ALARM WILL OCCUR.
 2) PIPING TO THE INLET BY OTHERS AND TO BE PER NFPA99 4-3.1.1.9(b)
 3) INSTRUMENTS DOWN STREAM OF SOURCE VALVE TO BE SUPPLIED BY OTHERS.

SYMBOL LEGEND			ADDITIONAL CONTROL REQ'D	Drawings to conform to the current revision of the following ANSI standards: Y14.3 Multi and sectional view dgs. Y14.5M Dimensioning and tolerancing
	MINUS DRAFT		BRINELL HARDNESS	
TOLERANCES NOT SPECIFIED	AUTOCAD 2000:	DO NOT SCALE DRAWING FOR DIMENSIONS		
.XX ±		Sheet 1 of 4		SCALE 1:10
.XXX ±		CONFIDENTIAL DISCLOSURE This drawing is the property of the CAMPBELL GROUP OF THE SCOTT FETZER COMPANY and subject to return on demand. Its contents are confidential and must not be copied or submitted to outside parties for use or examination.		
< (DEG) ±		DRAWN BY	CHECKED BY	APPROVED BY
		GES	DW	DW
		5/4/01	5/4/01	5/4/01
MATERIAL		N/A		
PART NAME		SCROLL TRIPLEX FLOW SCHEMATIC		
DWG NO		MST0503		
SIZE		D		

REV	ZONE	REVISION	DATE	ECN	NAME	CHKD
L-1	3ALL	ADDED SHEET 3 C. D. G.	7/20/10	22348	GES	DMS
L-2	1 ALL	ADDED OUTLET LOCATION DIMENSIONS	10/8/10	22348	AEK	GES
M-1	ALL	ADDED PBM SHEETS	10/18/11	22609	AEK	GES
N-1	107, 307	REMOVED MAIN DISCONNECT FROM STANDARD PANEL FACE	5/11/12	22752	AEK	GES
P-1	1E-0	ADDED FLEX HOSE TO INLET FILTERS	7/13/12	22723	GES	DMS
Q-1	2 ALL	ADDED MISSING FLEX LINES TO FLOW	8/14/12	PXEC0009	AEK	GES
R-1	4ALL	ADDED SHEET 4, SHIP VIEW	8/22/12	22723	GES	DMS
S-1	2 C4	MOVED PRESSURE SENSING LOCATION	5/6/14	PXEC0071	AEK	GES
T-1	2 C5	CORRECTED 1/2" HOSE TO 3/4" HOSE	6/26/15	PXEC0093	AEK	GES



16.59
"Y" C.O.G

33.26
"Z" C.O.G

35.58
"X" C.O.G

443 LBS

411 LBS

412 LBS

381 LBS

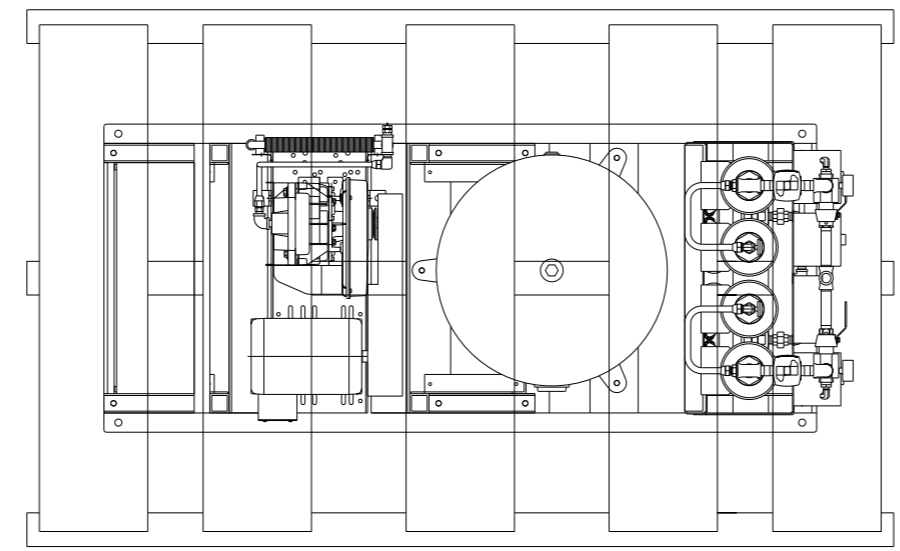
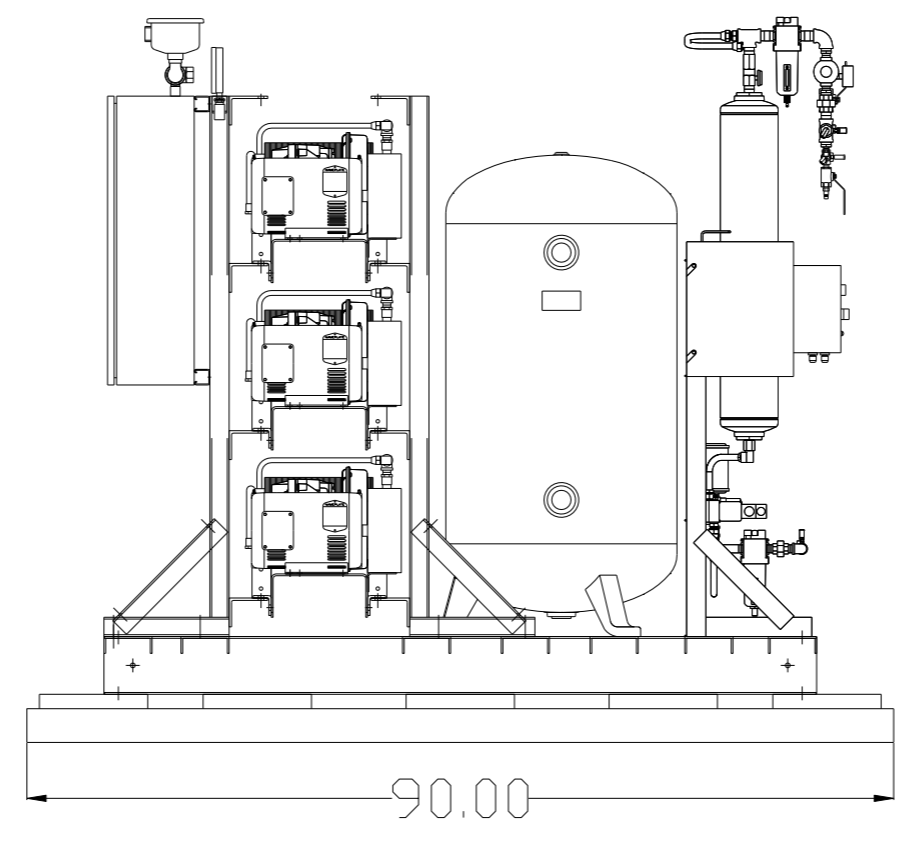
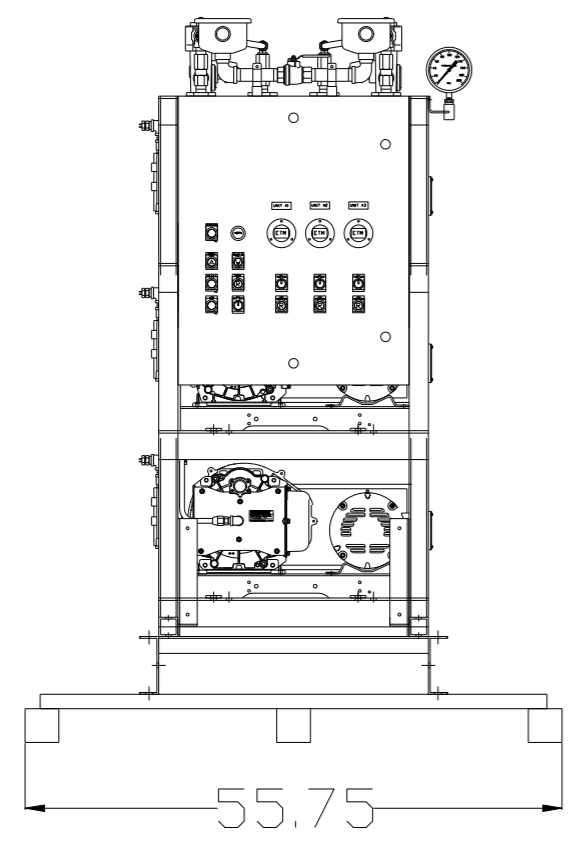
DENOTES CENTER OF GRAVITY LOCATION

SYSTEM:
TOTAL WEIGHT: 1647 LBS
C.O.G. DIMENSIONS
X (FRONT): -35.84"
Y (RIGHT): 16.59"
Z (HEIGHT): 33.26"

SYMBOL LEGEND		AUTOCAD REL2000		DO NOT SCALE DRAWING FOR DIMENSIONS	
⊖ = MINUS DRAFT	⊕ = PLUS DRAFT	⊕ = ADDITIONAL CONTROL REQ'D	⊕ = BRINELL HARDNESS	Drawings to conform to the current revision of the following ANSI standards: Y14.3 Multi and sectional view dsgs. Y14.5M Dimensioning and tolerancing	
.XX ±	.XXX ±	INCH		Sheet 3 of 4	SCALE 1:10
CONFIDENTIAL DISCLOSURE This drawing is the property of the CAMPBELL GROUP OF THE SCOTT FETZER COMPANY and subject to return on demand. Its contents are confidential and must not be copied or submitted to outside parties for use or examination.		DRAWN BY GES	CHECKED BY DMS	APPROVED BY ENGINEERING GES	MFG/MRKTG TH
MATERIAL N/A		7/20/10	7/20/10	7/20/10	7/20/10
PART NAME SHP SCROLL TRIPLEX 80GAL DUAL DESICCANT				SIZE D	
		DWG NO MST0503		nct0503.dwg	

8 7 6 5 4 3 2 1

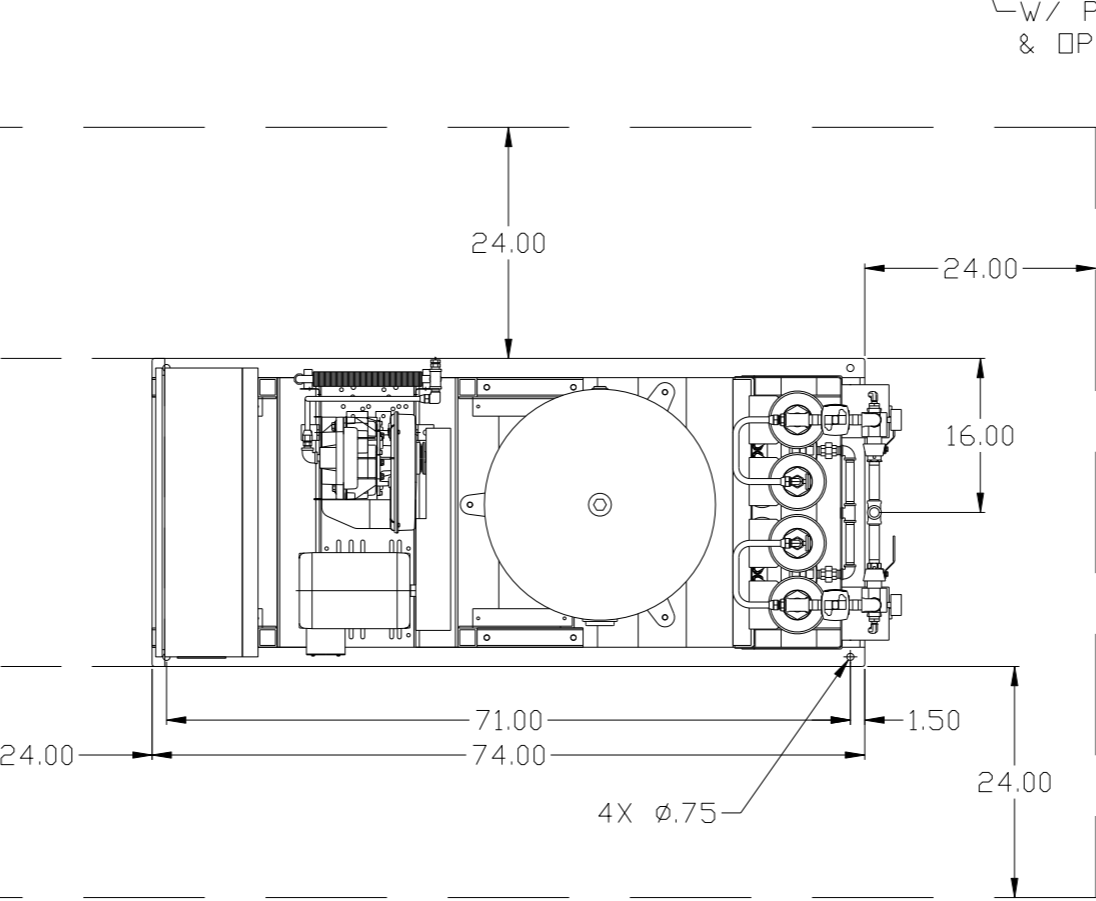
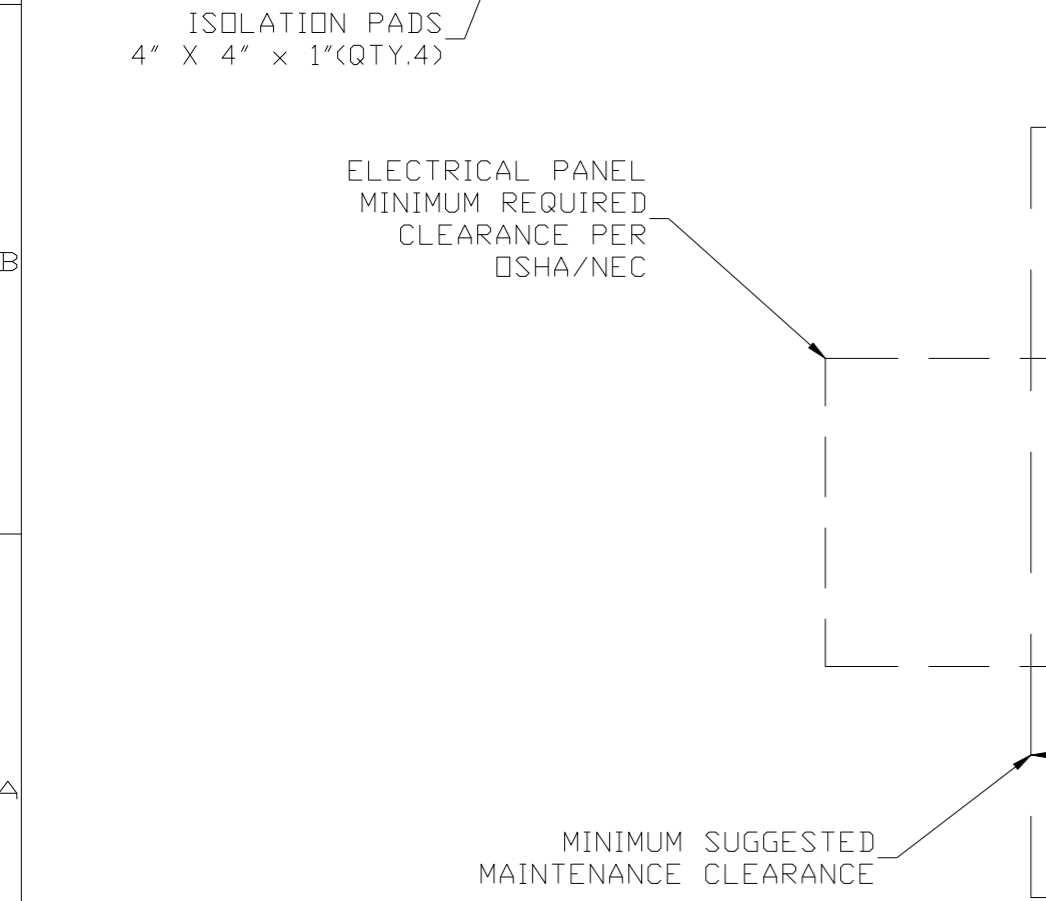
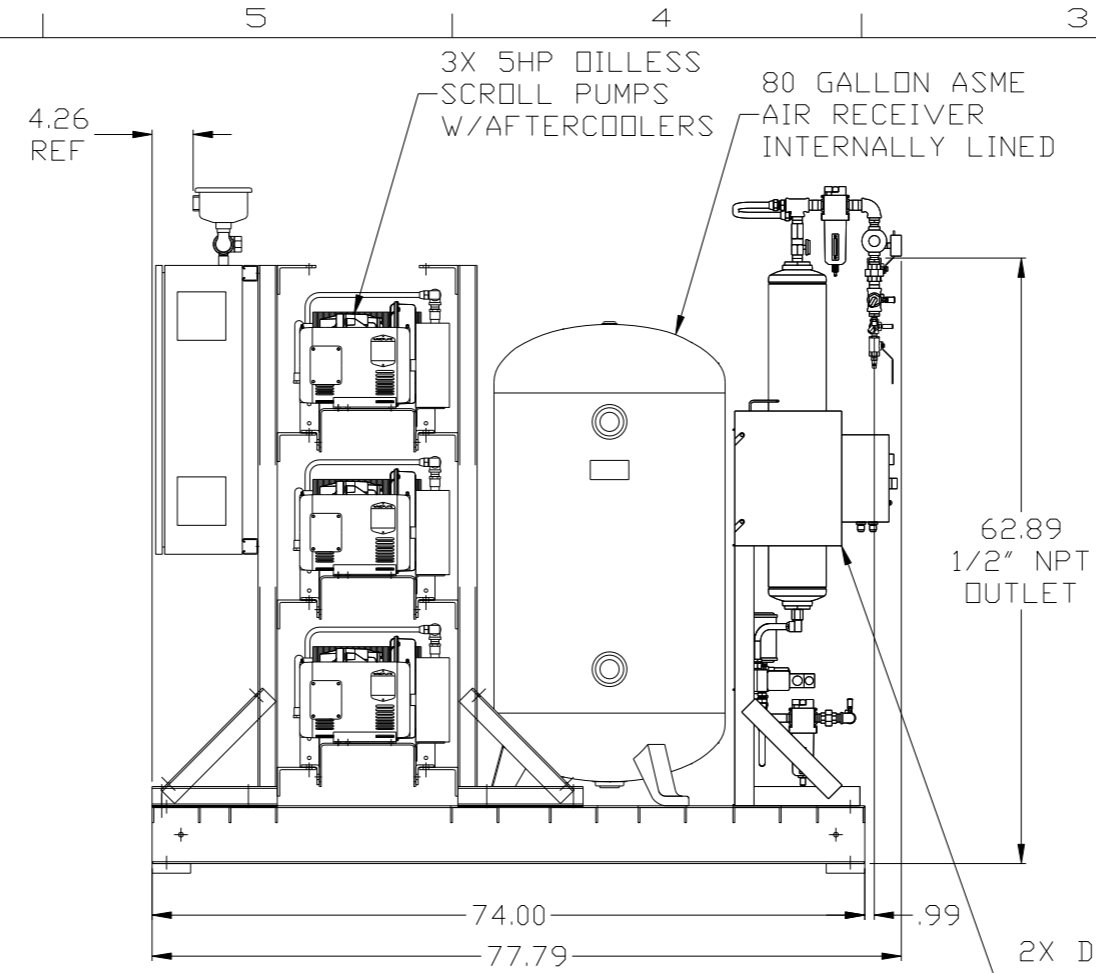
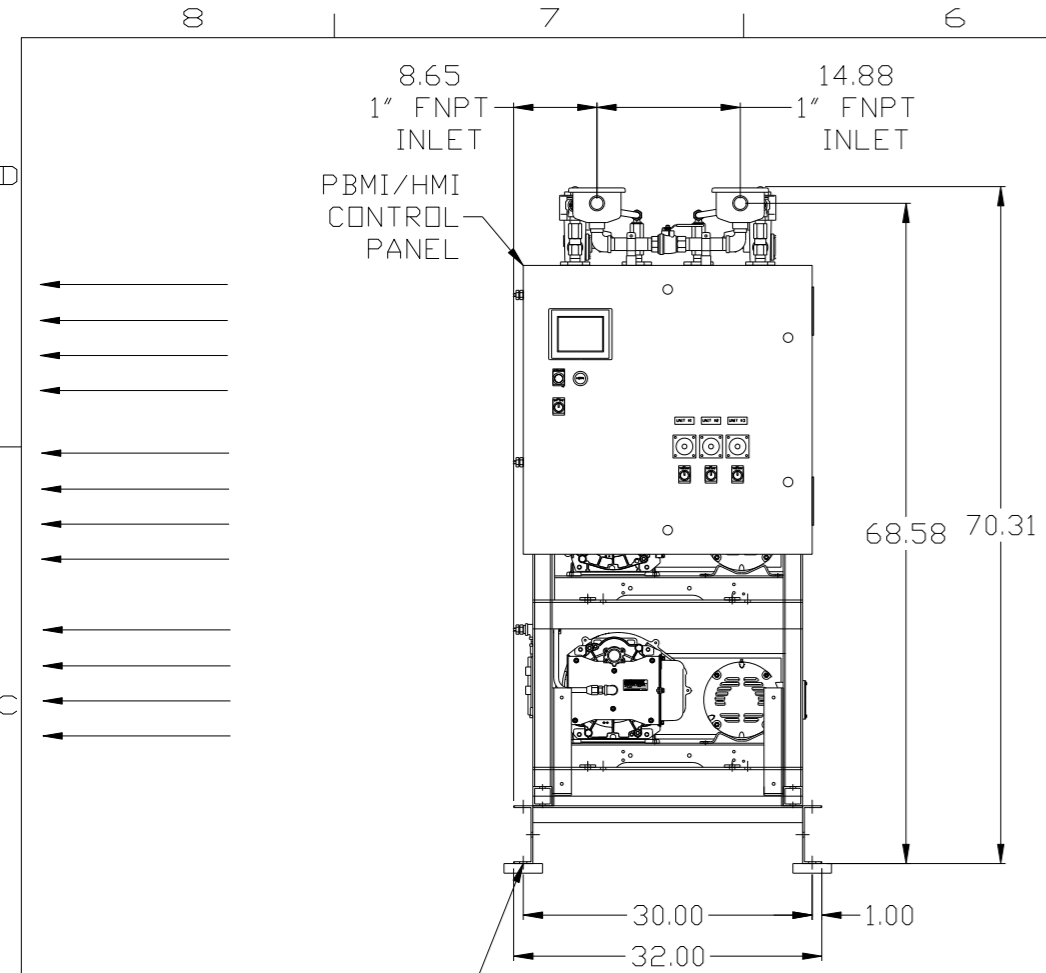
REV	ZONE	REVISION	DATE	ECN	NAME	CHKD
R-1	4 ALL	ADDED SHEET 4, SHIP VIEW	8/22/12	22723	GES	DMS
S-1	2 C4	MOVED PRESSURE SENSING LOCATION	5/6/14	PXEC0071	AEK	GES
T-1	2 C5	CORRECTED 1/2" HOSE TO 3/4" HOSE	6/26/15	PXEC0093	AEK	GES



8 7 6 5 4 3 2 1

SYMBOL LEGEND ⊖ = MINUS DRAFT ⊕ = PLUS DRAFT ⊕ = ADDITIONAL CONTROL REQ'D HRC = BRINELL HARDNESS		Drawings to conform to the current revision of the following ANSI standards: Y14.3 Multi and sectional view dsgs. Y14.5M Dimensioning and tolerancing	
TOLERANCES NOT SPECIFIED .XX ± .XXX ± <<DEG> ±		AUTOCAD REL2000 INCH	
CONFIDENTIAL DISCLOSURE This drawing is the property of the CAMPBELL GROUP OF THE SCOTT FETZER COMPANY and subject to return on demand. Its contents are confidential and must not be copied or submitted to outside parties for use or examination.		DO NOT SCALE DRAWING FOR DIMENSIONS Sheet 4 of 4 SCALE 1:10	
MATERIAL N/A		DRAWN BY: GES CHECKED BY: DMS APPROVED BY: ENGINEERING (GES, TH) 8/22/12 8/22/12 8/22/12 8/22/12	
PART NAME SHP SCROLL TRIPLEX 80GAL DUAL DESICCANT		 150 PRODUCTION DRIVE, HARRISON, OHIO 45030 Ph: 888-769-7979 FAX: (513) 367-3125 DWG NO: MST0503 SIZE: D	

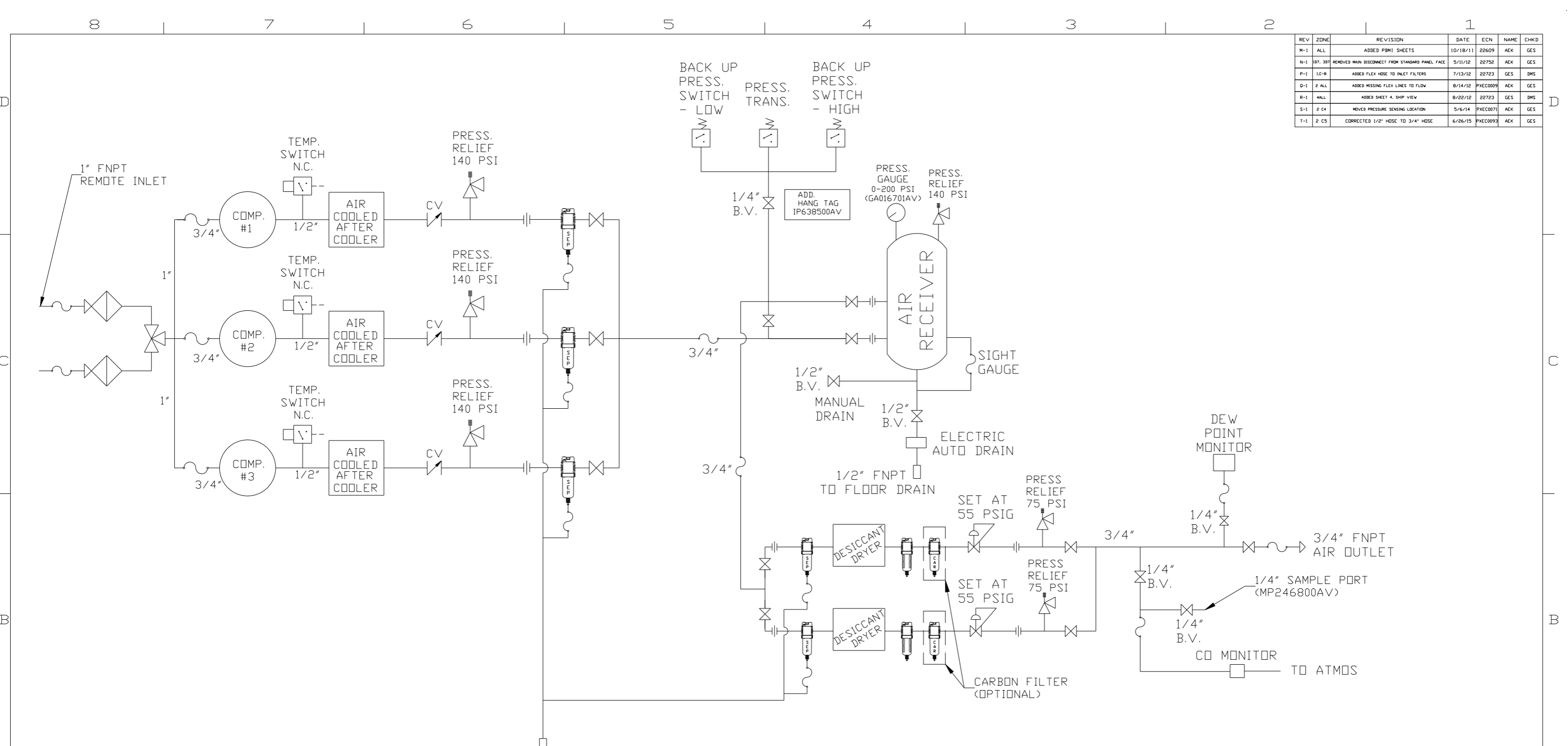
REV	ZONE	REVISION	DATE	ECN	NAME	CHKD
M-1	ALL	ADDED PBMI SHEETS	10/18/11	22609	AEK	GES
N-1	07, 307	REMOVED MAIN DISCONNECT FROM STANDARD PANEL FACE	5/11/12	22752	AEK	GES
P-1	12-B	ADDED FLEX HOSE TO INLET FILTERS	7/13/12	22723	GES	DMS
Q-1	2 ALL	ADDED MISSING FLEX LINES TO FLOW	8/14/12	PXEC0009	AEK	GES
R-1	4ALL	ADDED SHEET 4, SHIP VIEW	8/22/12	22723	GES	DMS
S-1	2 C4	MOVED PRESSURE SENSING LOCATION	5/6/14	PXEC0071	AEK	GES
T-1	2 C5	CORRECTED 1/2" HOSE TO 3/4" HOSE	6/26/15	PXEC0093	AEK	GES



NOTE: SYSTEM DESIGNED IN COMPLIANCE WITH US NFPA'99, LATEST EDITION.

SYMBOL LEGEND ⊖ = MINUS DRAFT ⊕ = PLUS DRAFT ⊕ = ADDITIONAL CONTROL REQ'D HRC = BRINELL HARDNESS		Drawings to conform to the current revision of the following ANSI standards: Y14.3 Multi and sectional view dgs. Y14.5M Dimensioning and tolerancing	
TOLERANCES NOT SPECIFIED .XX ± .XXX ± <DEG> ±		AUTOCAD REL2008 INCH DO NOT SCALE DRAWING FOR DIMENSIONS Sheet 2 of 4 SCALE 1:10	
CONFIDENTIAL DISCLOSURE This drawing is the property of the CAMPBELL GROUP OF THE SCOTT FETZER COMPANY and subject to return on demand. Its contents are confidential and must not be copied or submitted to outside parties for use or examination.		DRAWN BY: AEK CHECKED BY: GES ENGINEERING: DMS MFG/MKTG: RJR 10/18/11 10/18/11 10/18/11 10/18/11	
MATERIAL: N/A		POWEREX 150 PRODUCTION DRIVE, HARRISON, OHIO 45030 Ph: 888-769-7979 Fax: (513) 367-3125	
PART NAME: 5HP SCROLL TRIPLEX 80GAL DUAL DESICCANT		DWG NO: MST0503 SIZE: D	

REV	ZONE	REVISION	DATE	ECN	NAME	CHKD
M-1	ALL	ADDED PBM1 SHEETS	10/18/11	22609	AEK	GES
N-1	07, 207	REMOVED MAIN DISCONNECT FROM STANDARD PANEL FACE	5/11/12	22752	AEK	GES
P-1	1E-8	ADDED FLEX HOSE TO INLET FILTERS	7/13/12	22723	GES	DMS
Q-1	2 ALL	ADDED MISSING FLEX LINES TO FLOW	8/14/12	PXEC0009	AEK	GES
R-1	4ALL	ADDED SHEET 4, SHIP VIEW	8/22/12	22723	GES	DMS
S-1	2 C4	MOVED PRESSURE SENSING LOCATION	5/6/14	PXEC0071	AEK	GES
T-1	2 C5	CORRECTED 1/2" HOSE TO 3/4" HOSE	6/26/15	PXEC0093	AEK	GES

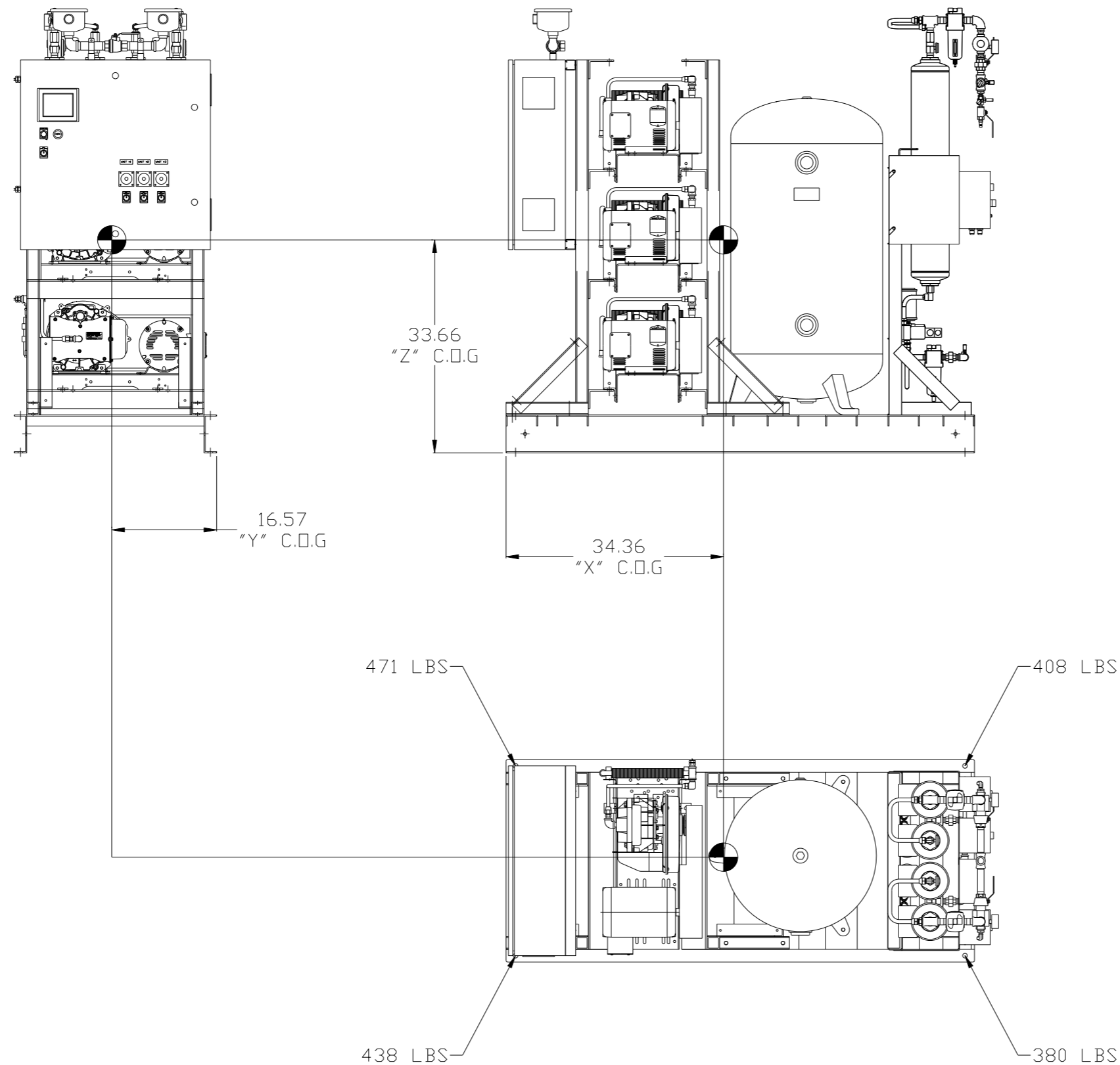


LEGEND	
	RELIEF VALVE
	INTAKE FILTER
	AIR FILTER
	3 WAY VALVE
	CARBON FILTER
	BALL VALVE
	PRESSURE SWITCH
	REGULATOR
	SEPARATOR
	CHECK VALVE
	FLEX LINE
	HIGH TEMP SWITCH
	UNION

- NOTES:
- 1) IF LAG 2 COMPRESSOR IS ENERGIZED ALARM WILL OCCUR.
 - 2) PIPING TO THE INLET BY OTHERS AND TO BE PER NFPA99 4-3.1.1.9(b)
 - 3) INSTRUMENTS DOWN STREAM OF SOURCE VALVE TO BE SUPPLIED BY OTHERS.
 - 4) THIS DRAWING COVERS PART#'S -25, -35, AND -45.

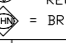
SYMBOL LEGEND			ADDITIONAL CONTROL REQ'D	Drawings to conform to the current revision of the following ANSI standards:
	MINUS DRAFT		BRINELL HARDNESS	Y14.3 Multi and sectional view dsgs. Y14.5M Dimensioning and tolerancing
TOLERANCES NOT SPECIFIED		AUTOCAD REL2008	DO NOT SCALE DRAWING FOR DIMENSIONS	
.XX ±	.XXX ±	<DEG> ±	INCH	Sheet 1 of 4
CONFIDENTIAL DISCLOSURE		This drawing is the property of the CAMPBELL GROUP OF THE SCOTT FETZER COMPANY and subject to return on demand. Its contents are confidential and must not be copied or submitted to outside parties for use or examination.		
DRAWN BY	CHECKED BY	APPROVED BY	MFG/MRKTG	
AEK	GES	DMS	RJR	
10/18/11	10/18/11	10/18/11	10/18/11	
MATERIAL		N/A		
PART NAME		SCROLL TRIPLEX FLOW SCHEMATIC		
DWG NO		MST0503		
SIZE		D		

REV	ZONE	REVISION	DATE	ECN	NAME	CHKD
M-1	ALL	ADDED PBM1 SHEETS	10/18/11	22609	AEK	GES
N-1	07, 307	REMOVED MAIN DISCONNECT FROM STANDARD PANEL FACE	5/11/12	22752	AEK	GES
P-1	1E-8	ADDED FLEX HOSE TO INLET FILTERS	7/13/12	22723	GES	DMS
Q-1	2 ALL	ADDED MISSING FLEX LINES TO FLOW	8/14/12	PXEC0009	AEK	GES
R-1	4ALL	ADDED SHEET 4, SHIP VIEW	8/22/12	22723	GES	DMS
S-1	2 C4	MOVED PRESSURE SENSING LOCATION	5/6/14	PXEC0071	AEK	GES
T-1	2 C5	CORRECTED 1/2" HOSE TO 3/4" HOSE	6/26/15	PXEC0093	AEK	GES



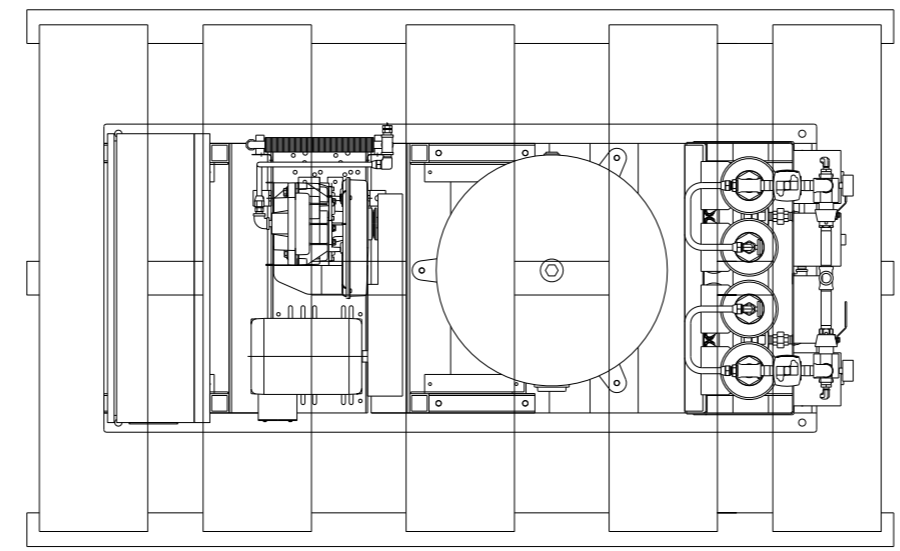
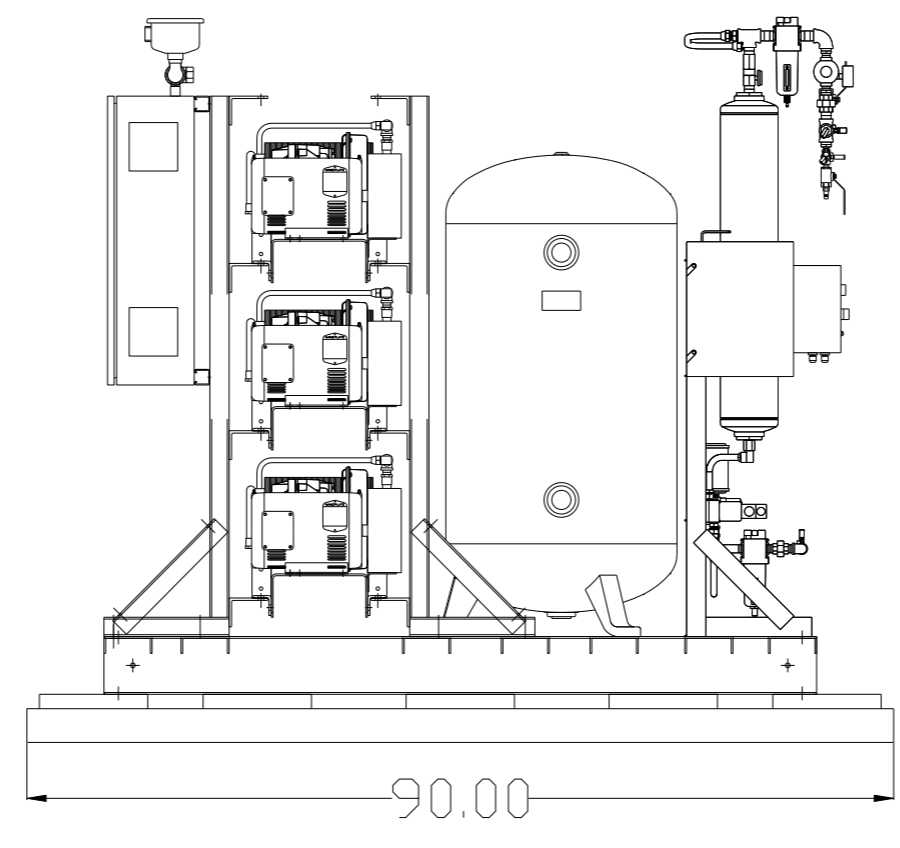
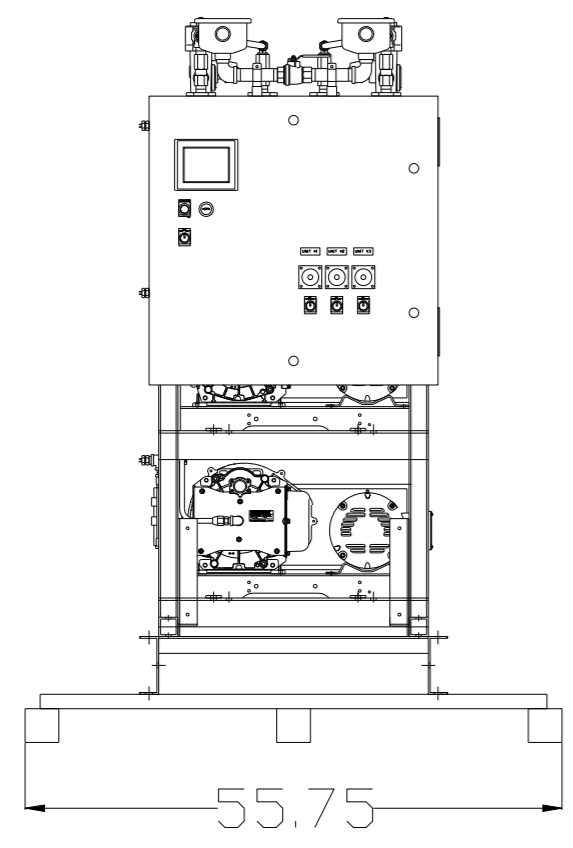
 DENOTES CENTER OF GRAVITY LOCATION

SYSTEM:
 TOTAL WEIGHT: 1697 LBS
 C.O.G. DIMENSIONS
 X (FRONT): -34.36"
 Y (RIGHT): 16.57"
 Z (HEIGHT): 33.66"

SYMBOL LEGEND ⊖ = MINUS DRAFT ⊕ = PLUS DRAFT		⊕ = ADDITIONAL CONTROL REQ'D  = BRINELL HARDNESS		Drawings to conform to the current revision of the following ANSI standards: Y14.3 Multi and sectional view dsgs. Y14.5M Dimensioning and tolerancing	
TOLERANCES NOT SPECIFIED .XX ± .XXX ± \angle (DEG.) ±		AUTOCAD REL2008 INCH		DO NOT SCALE DRAWING FOR DIMENSIONS Sheet 3 of 4 SCALE 1:10	
CONFIDENTIAL DISCLOSURE This drawing is the property of the CAMPBELL GROUP OF THE SCOTT FETZER COMPANY and subject to return on demand. Its contents are confidential and must not be copied or submitted to outside parties for use or examination.		DRAWN BY AEK		CHECKED BY GES	
MATERIAL N/A		APPROVED BY DMS		ENGINEERING MFG/MRKTG RJR	
PART NAME SHP SCROLL TRIPLEX 80GAL DUAL DESICCANT		DATE 10/18/11		DATE 10/18/11	
DWG NO MST0503		DATE 10/18/11		DATE 10/18/11	
SIZE D		DATE 10/18/11		DATE 10/18/11	

8 7 6 5 4 3 2 1

REV	ZONE	REVISION	DATE	ECN	NAME	CHKD
R-1	4ALL	ADDED SHEET 4, SHIP VIEW	8/22/12	22723	GES	DMS
S-1	2 C4	MOVED PRESSURE SENSING LOCATION	5/6/14	PXEC0071	AEK	GES
T-1	2 C5	CORRECTED 1/2" HOSE TO 3/4" HOSE	6/26/15	PXEC0093	AEK	GES



8 7 6 5 4 3 2 1

SYMBOL LEGEND ⊖ = MINUS DRAFT ⊕ = PLUS DRAFT TOLERANCES NOT SPECIFIED .XX ± .XXX ± << DEG > ±		= ADDITIONAL CONTROL REQ'D = BRINELL HARDNESS Drawings to conform to the current revision of the following ANSI standards: Y14.3 Multi and sectional view dsgs. Y14.5M Dimensioning and tolerancing	
AUTOCAD REL2008 INCH		DO NOT SCALE DRAWING FOR DIMENSIONS Sheet 4 of 4 SCALE 1:10	
CONFIDENTIAL DISCLOSURE This drawing is the property of the CAMPBELL GROUP OF THE SCOTT FETZER COMPANY and subject to return on demand. Its contents are confidential and must not be copied or submitted to outside parties for use or examination.		DRAWN BY GES	CHECKED BY DMS
MATERIAL N/A		APPROVED BY GES	MFG/MRKTG TH
PART NAME SHP SCROLL TRIPLEX 80GAL DUAL DESICCANT		8/22/12 8/22/12 8/22/12 8/22/12	 150 PRODUCTION DRIVE, HARRISON, OHIO 45030 Ph: 888-769-7979 FAX: (513) 367-3125
		DWG NO MST0503	SIZE D