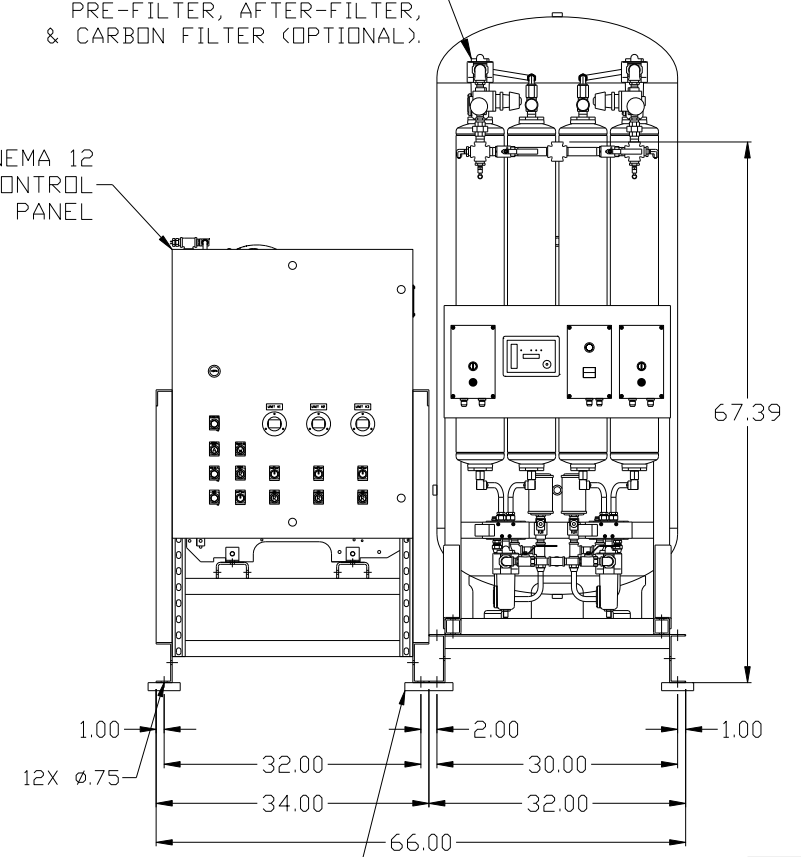


REV	ZONE	REVISION	DATE	ECN	NAME	CHKD
B-1	ALL	RELEASE TO PRODUCTION	08/16/06	21555	RSN	DMS
C-2	1 ALL	ADDED HMT DRYER, NEW STYLE TANK & PANEL	11/16/07	21669	AEK	GES
D-1	E2,C4	ADDED ISO VALVE, HANG TAG, TANK GAUGE & 75PSI SRV	06/03/08	21907	DMS	GES
D-2	ALL	UPDATED TO E-SERIES PUMP, CORRECTED DRYER MODEL	12/16/08	21907	AEK	GES
E-1	ALL	UPDATED TO POWEREX DRYER	8/19/09	22120	AEK	GES
F-1	3, 4ALL	ADDED SHEET 3 & 4	6/3/10	22348	AEK	GES
G-1	ALL	UPDATED MULTI-SCROLL FRAMES	11/2/10	22405	AEK	GES
H-1	ALL	ADDED PBM SHEETS	10/18/11	22609	AEK	GES
J-1	2 ALL	ADDED/UPDATED FLEX LINES	11/5/12	PXEC0009	AEK	DMS
K-1	2, 3, 4	ADDED/UPDATED FLEX LINES	11/13/12	PXEC0009	AEK	DMS
L-1	ALL	REMOVED MAIN DISC FROM BASIC CONTROL PANEL	4/22/14	PXEC0067	AEK	GES

2X DESICCANT DRYERS
W/ DEW POINT MONITOR,
CARBON MONOXIDE MONITOR,
PRE-FILTER, AFTER-FILTER,
& CARBON FILTER (OPTIONAL).

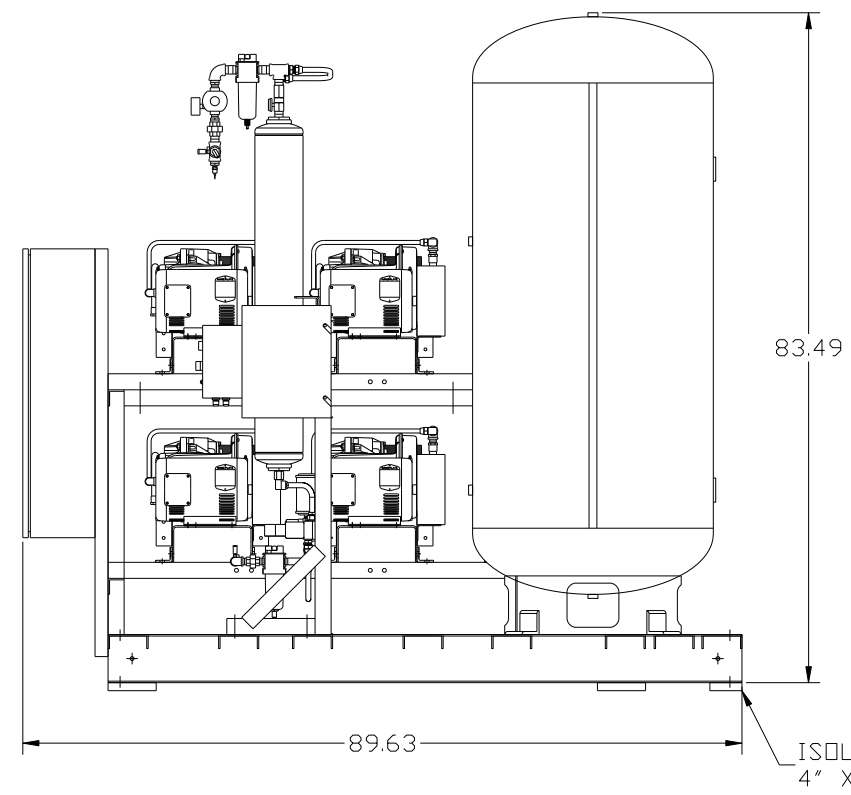
NEMA 12
CONTROL
PANEL



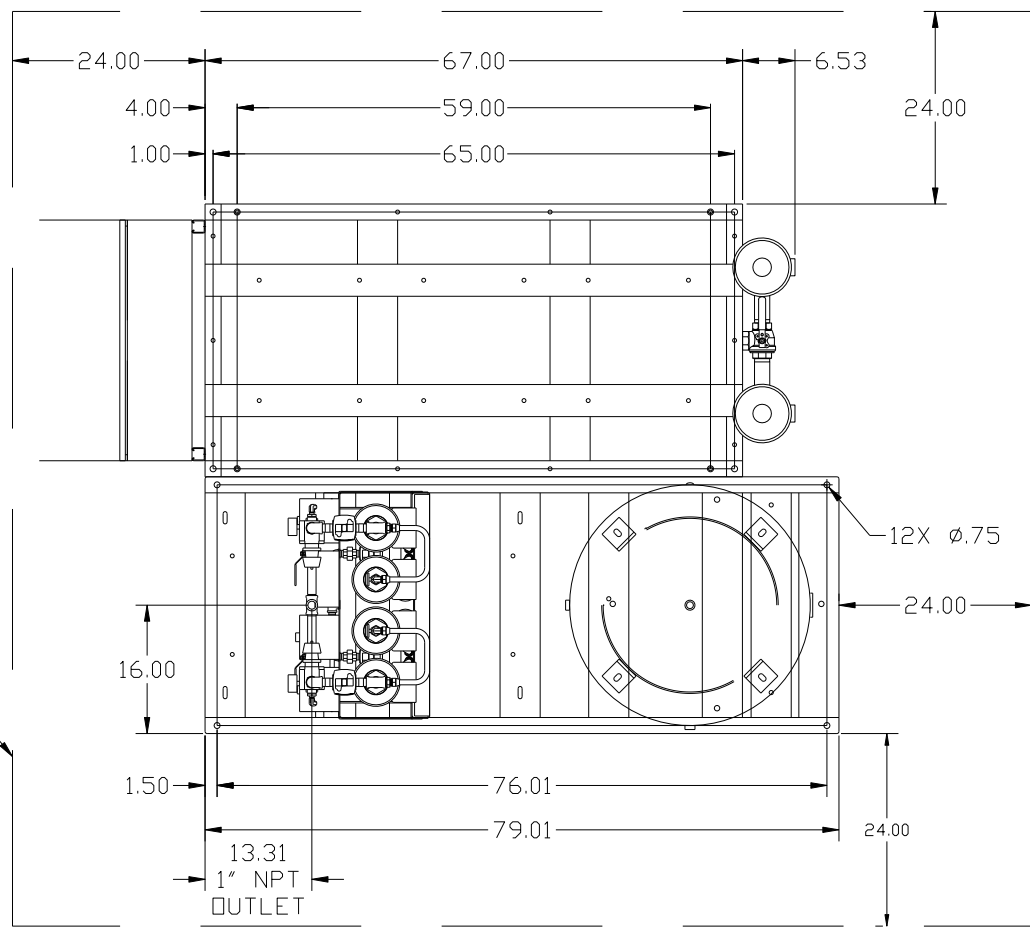
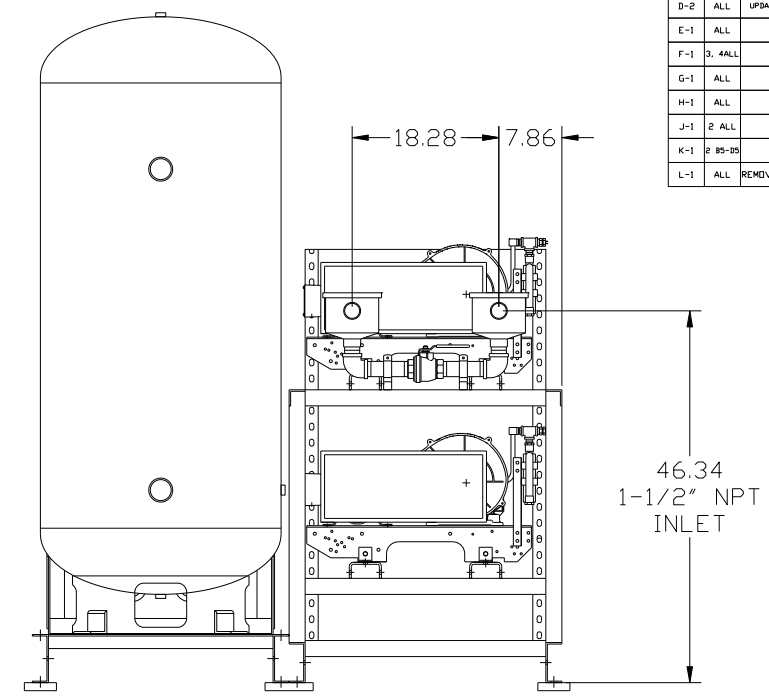
ISOLATION PADS
6" X 6" X 1"(QTY.2)

MINIMUM RECOMMENDED
ELECTRICAL PANEL
CLEARANCE PER OSHA/NEC
REQUIREMENTS

MINIMUM RECOMMENDED
MAINTENANCE
CLEARANCE



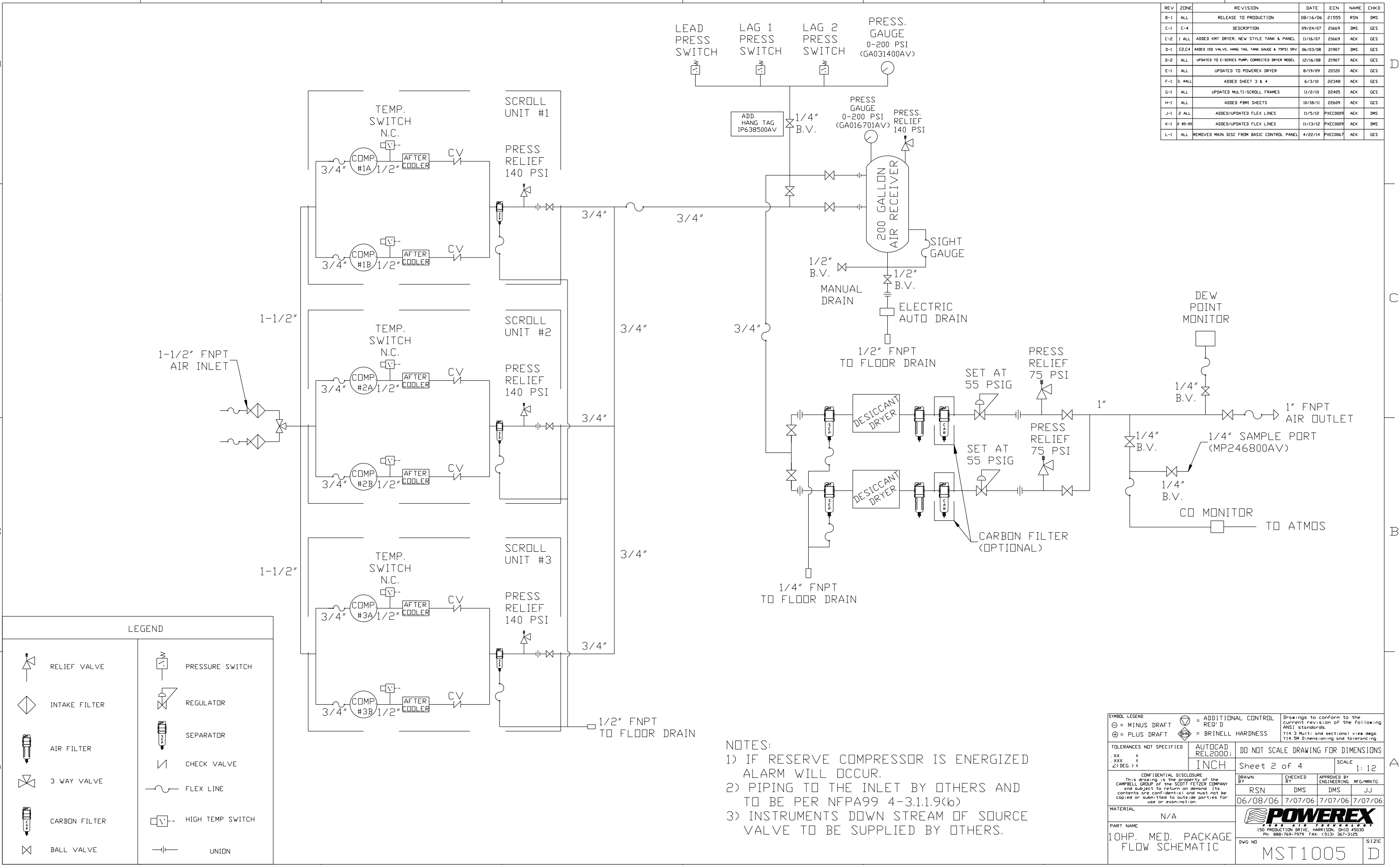
ISOLATION PADS
4" X 4" X 1"(QTY.5)



NOTE: SYSTEM DESIGNED IN
COMPLIANCE WITH US NFPA'99,
LATEST EDITION.

SYMBOL LEGEND ⊖ = MINUS DRAFT ⊕ = PLUS DRAFT ⊕ = ADDITIONAL CONTROL REQ'D ⊕ = BRINELL HARDNESS		Drawings to conform to the current revision of the following ANSI standards: Y14.3 Multi and sectional view dgs. Y14.5M Dimensioning and tolerancing	
TOLERANCES NOT SPECIFIED .XX ± .XXX ± \angle (DEG) ±		AUTOCAD REL2000: INCH DO NOT SCALE DRAWING FOR DIMENSIONS Sheet 1 of 4 SCALE 1:12	
CONFIDENTIAL DISCLOSURE This drawing is the property of the CAMPBELL GROUP OF THE SCOTT FETZER COMPANY and subject to return on demand. Its contents are confidential and must not be copied or submitted to outside parties for use or examination.		DRAWN BY: RSN CHECKED BY: DMS APPROVED BY: DMS, JJ 06/08/06 7/07/06 7/07/06 7/07/06	
MATERIAL: N/A		POWEREX 150 PRODUCTION DRIVE, HARRISON, OHIO 45030 Ph: 888-769-7979 FAX: (513) 367-3125	
PART NAME: TRIPLEX DILLESS SCROLL 10HP, 200GAL. BASEMOUNT DUPLEX DESICCANT		DWG NO: MST1005 SIZE: D	

REV	ZONE	REVISION	DATE	ECN	NAME	CHKD
B-1	ALL	RELEASE TO PRODUCTION	08/16/06	21555	RSN	DMS
C-1	C-4	DESCRIPTION	09/24/07	21669	DMS	GES
C-2	1 ALL	ADDED KMT DRYER, NEW STYLE TANK & PANEL	11/16/07	21669	AEK	GES
D-1	CE,C4	ADDED ISO VALVE, HANG TAG, TANK GAUGE & 75PSI SRV	06/03/08	21907	DMS	GES
D-2	ALL	UPDATED TO E-SERIES PUMP, CORRECTED DRYER MODEL	12/16/08	21907	AEK	GES
E-1	ALL	UPDATED TO POWEX DRYER	8/19/09	22120	AEK	GES
F-1	3, 4ALL	ADDED SHEET 3 & 4	6/3/10	22348	AEK	GES
G-1	ALL	UPDATED MULTI-SCROLL FRAMES	11/2/10	22405	AEK	GES
H-1	ALL	ADDED PBMI SHEETS	10/18/11	22609	AEK	GES
J-1	2 ALL	ADDED/UPDATED FLEX LINES	11/5/12	PXEC0009	AEK	DMS
K-1	2 MS-DS	ADDED/UPDATED FLEX LINES	11/13/12	PXEC0009	AEK	DMS
L-1	ALL	REMOVED MAIN DISC FROM BASIC CONTRL PANEL	4/22/14	PXEC0067	AEK	GES



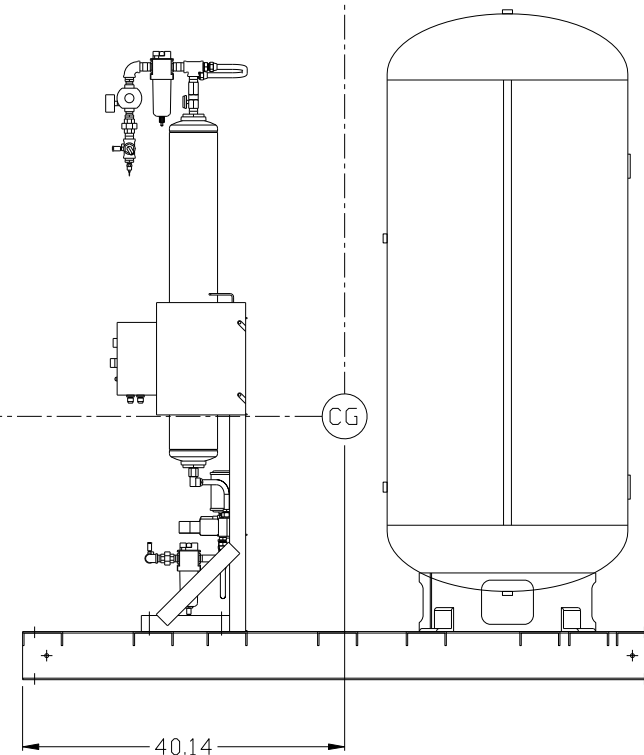
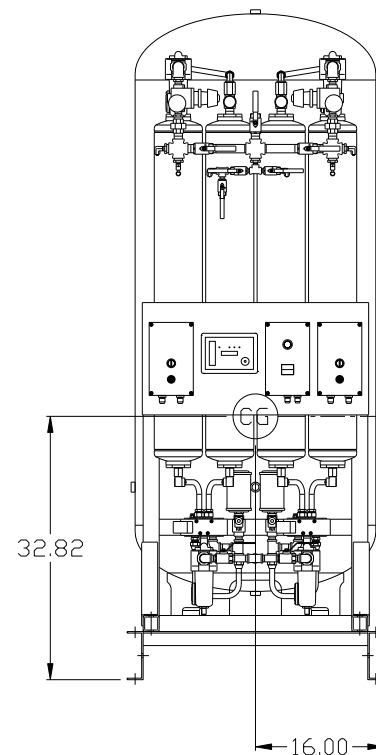
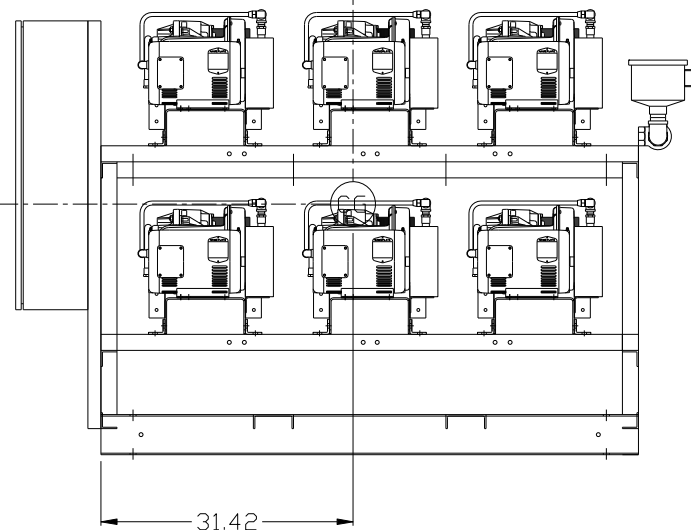
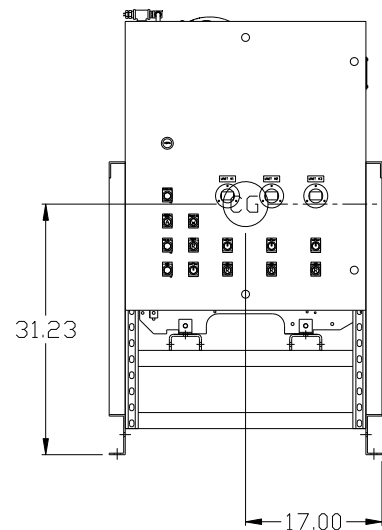
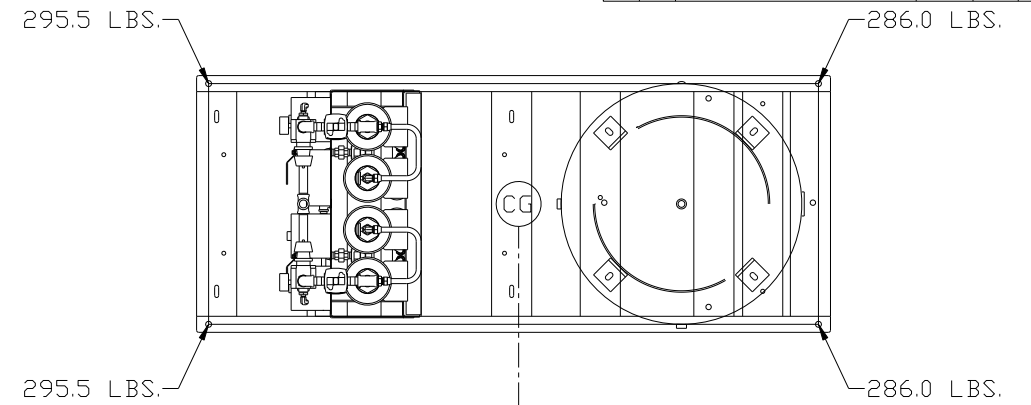
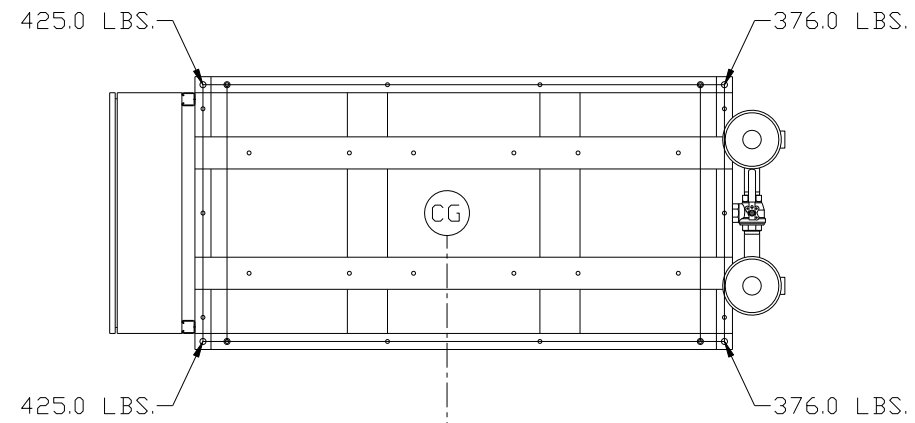
LEGEND

	RELIEF VALVE		PRESSURE SWITCH
	INTAKE FILTER		REGULATOR
	AIR FILTER		SEPARATOR
	3 WAY VALVE		CHECK VALVE
	CARBON FILTER		FLEX LINE
	BALL VALVE		HIGH TEMP SWITCH
			UNION

NOTES:
 1) IF RESERVE COMPRESSOR IS ENERGIZED ALARM WILL OCCUR.
 2) PIPING TO THE INLET BY OTHERS AND TO BE PER NFPA99 4-3.1.1.9(b)
 3) INSTRUMENTS DOWN STREAM OF SOURCE VALVE TO BE SUPPLIED BY OTHERS.

SYMBOL LEGEND		AUTOCAD REL2000		DO NOT SCALE DRAWING FOR DIMENSIONS	
⊖	MINUS DRAFT	+	PLUS DRAFT	Sheet 2 of 4	SCALE 1:12
⊕	PLUS DRAFT	INCH			
TOLERANCES NOT SPECIFIED		CONFIDENTIAL DISCLOSURE		DRAWN BY	
.XX ±		This drawing is the property of the CAMPBELL GROUP of the SCOTT FETZER COMPANY and subject to return on demand. Its contents are confidential and must not be copied or submitted to outside parties for use or examination.		RSN	
.XXX ±				DMS	
< (DEG) ±				DMS	
				JJ	
				06/08/06 7/07/06 7/07/06 7/07/06	
MATERIAL		N/A		APPROVED BY	
				MFG/MKTG	
PART NAME		10HP. MED. PACKAGE FLOW SCHEMATIC		POWEREX	
				150 PRODUCTION DRIVE, HARRISON, OHIO 45030 Ph 888-769-7979 FAX (513) 367-3125	
DWG NO		MST1005		SIZE	
				D	

REV	ZONE	REVISION	DATE	ECN	NAME	CHKD
F-1	3, 4ALL	ADDED SHEET 3 & 4	6/3/10	22348	AEK	GES
G-1	ALL	UPDATED MULTI-SCROLL FRAMES	11/2/10	22405	AEK	GES
H-1	ALL	ADDED PBM SHEETS	10/18/11	22609	AEK	GES
J-1	2 ALL	ADDED/UPDATED FLEX LINES	11/5/12	PXEC0009	AEK	DMS
K-1	2 BS-BS	ADDED/UPDATED FLEX LINES	11/13/12	PXEC0009	AEK	DMS
L-1	ALL	REMOVED MAIN DISC FROM BASIC CONTRL PANEL	4/22/14	PXEC0067	AEK	GES



PUMP SKID:
TOTAL WEIGHT: 1602 LBS
C.O.G. DIMENSIONS
X (FRONT): -17"
Y (RIGHT): 31.42"
Z (HEIGHT): 31.23"

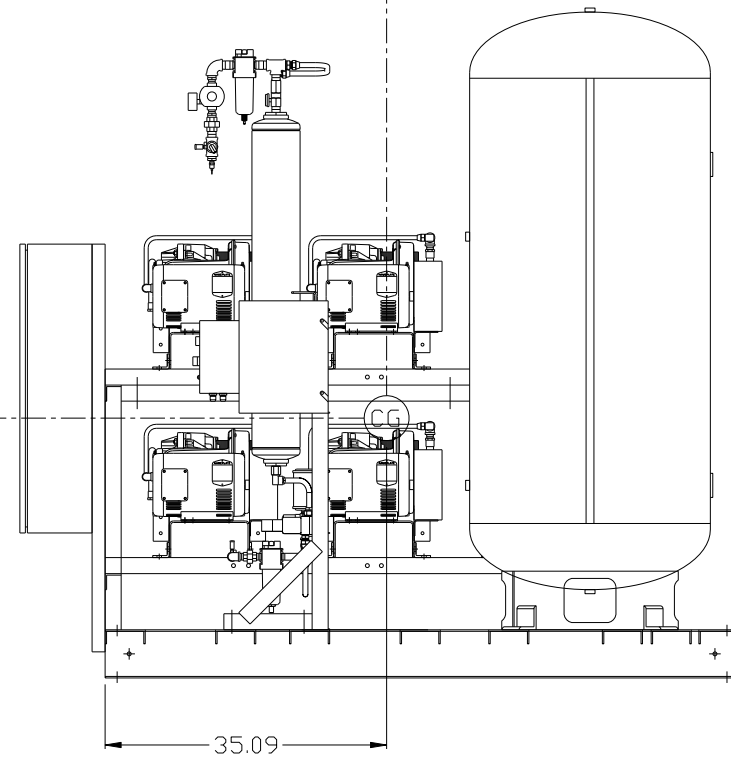
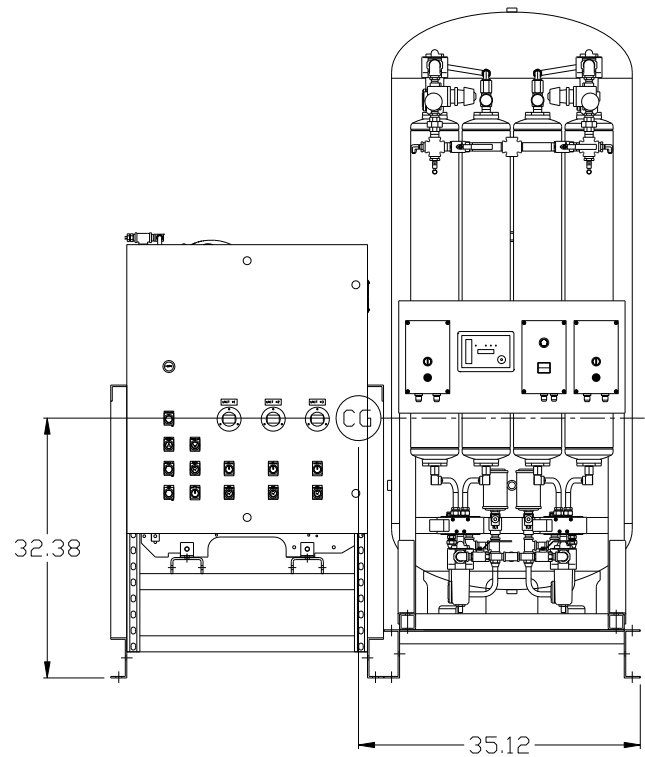
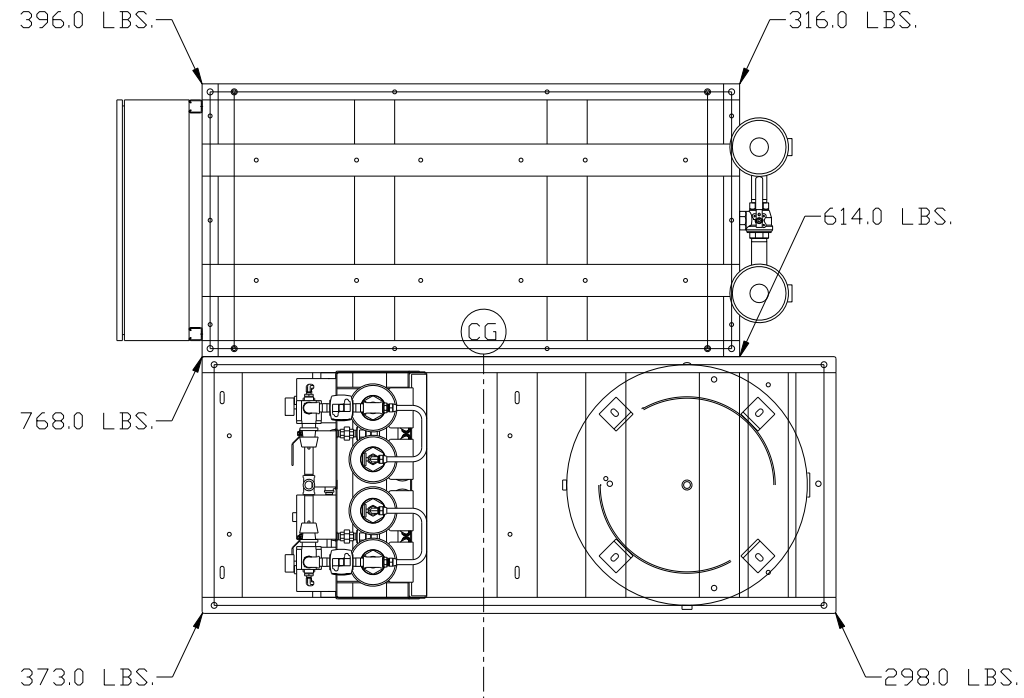
TANK/DRYER SKID:
TOTAL WEIGHT: 1163 LBS
C.O.G. DIMENSIONS
X (FRONT): -16"
Y (RIGHT): 40.14"
Z (HEIGHT): 32.82"

(CG) denotes center of gravity

SYMBOL LEGEND ⊖ = MINUS DRAFT ⊕ = PLUS DRAFT TOLERANCES NOT SPECIFIED .XX ± .XXX ± <<DEG> ±		⊕ = ADDITIONAL CONTROL REQ'D HRC = BRINELL HARDNESS Drawings to conform to the current revision of the following ANSI standards: Y14.3 Multi and sectional view dgs. Y14.5M Dimensioning and tolerancing	
AUTOCAD REL2008 INCH		DO NOT SCALE DRAWING FOR DIMENSIONS Sheet 3 of 4 SCALE 1:12	
CONFIDENTIAL DISCLOSURE This drawing is the property of the CAMPBELL GROUP OF THE SCOTT FETZER COMPANY and subject to return on demand. Its contents are confidential and must not be copied or submitted to outside parties for use or examination.		DRAWN BY AEK	CHECKED BY GES
MATERIAL N/A		APPROVED BY DMS	APPROVED BY JJ
PART NAME TRIPLEX DILLESS SCROLL 10HP, 200GAL. BASEMOUNT DUPLEX DESICCANT		DATE 6/3/10	DATE 6/3/10
DWG NO MST1005		SIZE D	

8 7 6 5 4 3 2 1

REV	ZONE	REVISION	DATE	ECN	NAME	CHKD
F-1	3, 4ALL	ADDED SHEET 3 & 4	6/3/10	22348	AEK	GES
G-1	ALL	UPDATED MULTI-SCROLL FRAMES	11/2/10	22405	AEK	GES
H-1	ALL	ADDED PBM SHEETS	10/18/11	22609	AEK	GES
J-1	2 ALL	ADDED/UPDATED FLEX LINES	11/9/12	PXEC0009	AEK	DMS
K-1	2 BS-BS	ADDED/UPDATED FLEX LINES	11/13/12	PXEC0009	AEK	DMS
L-1	ALL	REMOVED MAIN DISC FROM BASIC CONTRL PANEL	4/22/14	PXEC0067	AEK	GES



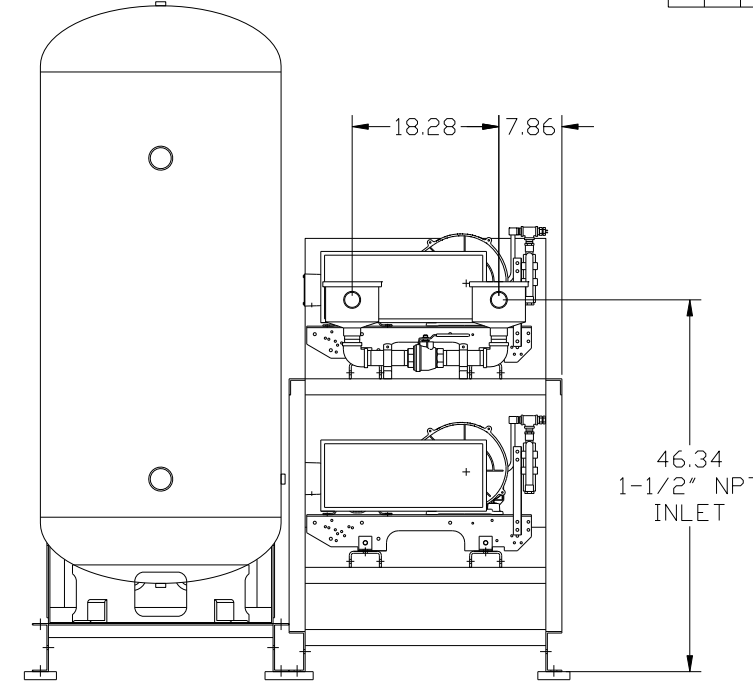
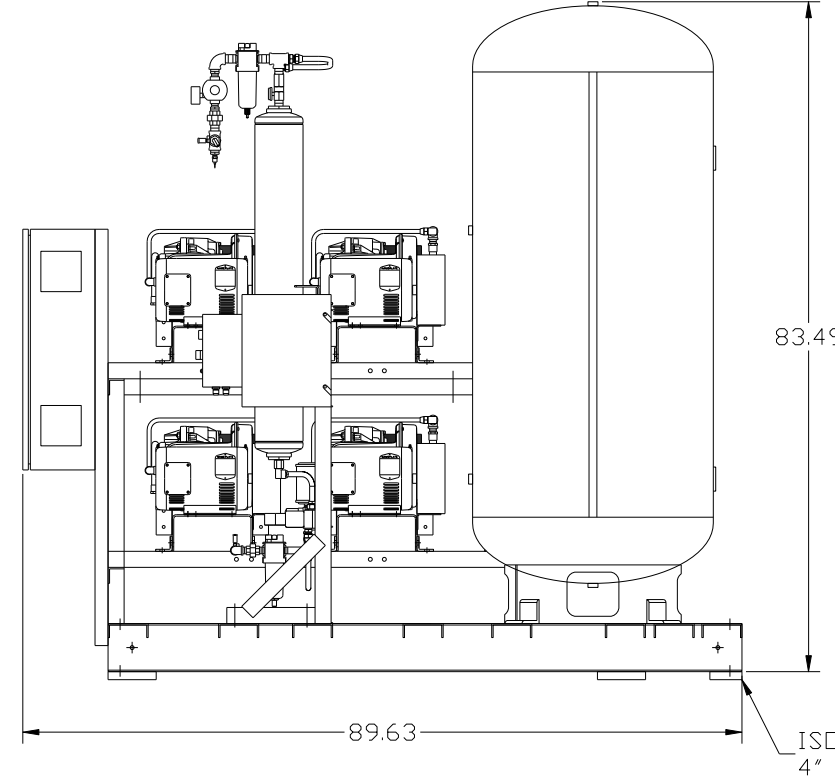
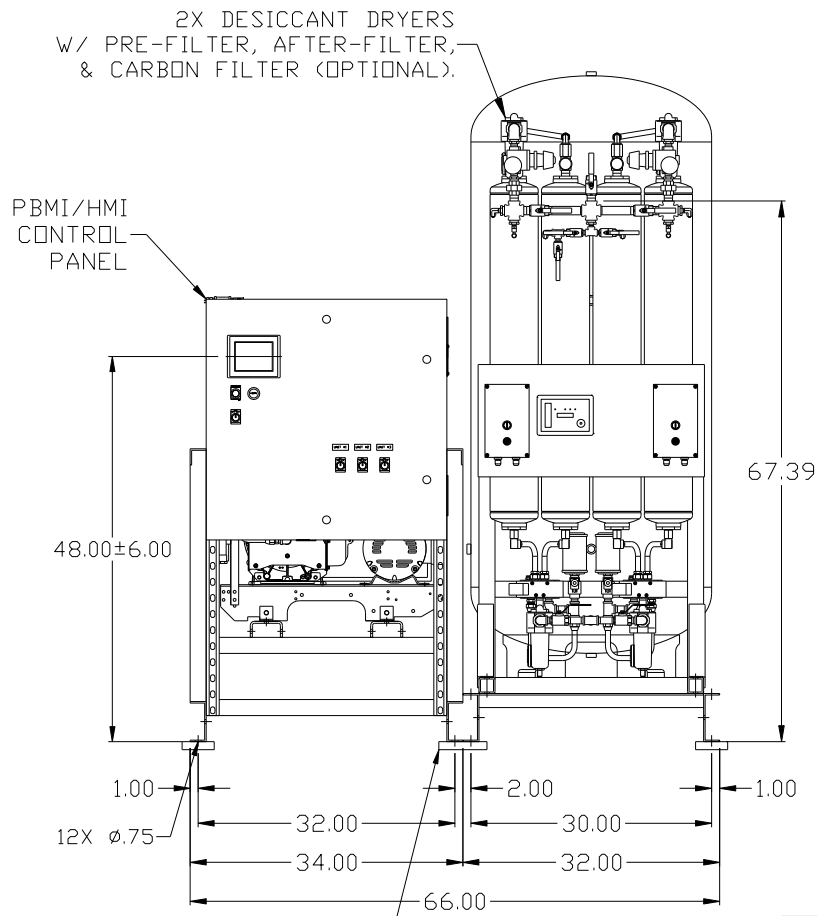
SYSTEM:
 TOTAL WEIGHT: 2765 LBS
 C.O.G. DIMENSIONS
 X (FRONT): -35.12"
 Y (RIGHT): 35.17"
 Z (HEIGHT): 32.38"

(CG) denotes center of gravity

SYMBOL LEGEND		= ADDITIONAL CONTROL REQ'D		Drawings to conform to the current revision of the following ANSI standards	
⊖	MINUS DRAFT	⊕	PLUS DRAFT	⊖	BRINELL HARDNESS
TOLERANCES NOT SPECIFIED		AUTOCAD REL2008		DO NOT SCALE DRAWING FOR DIMENSIONS	
.XX ±		INCH		Sheet 4 of 4	SCALE 1:12
CONFIDENTIAL DISCLOSURE		DRAWN BY		CHECKED BY	
This drawing is the property of the CAMPBELL GROUP OF THE SCOTT FETZER COMPANY and subject to return on demand. Its contents are confidential and must not be copied or submitted to outside parties for use or examination.		AEK		GES	
		6/3/10		6/3/10	
				6/3/10	
				6/3/10	
MATERIAL		N/A		APPROVED BY	
				ENGINEERING MFG/MKTG	
				DMS JJ	
PART NAME		TRIPLEX DILLESS SCROLL 10HP, 200GAL. BASEMOUNT DUPLEX DESICCANT		DWG NO	
				MST1005	
				SIZE D	

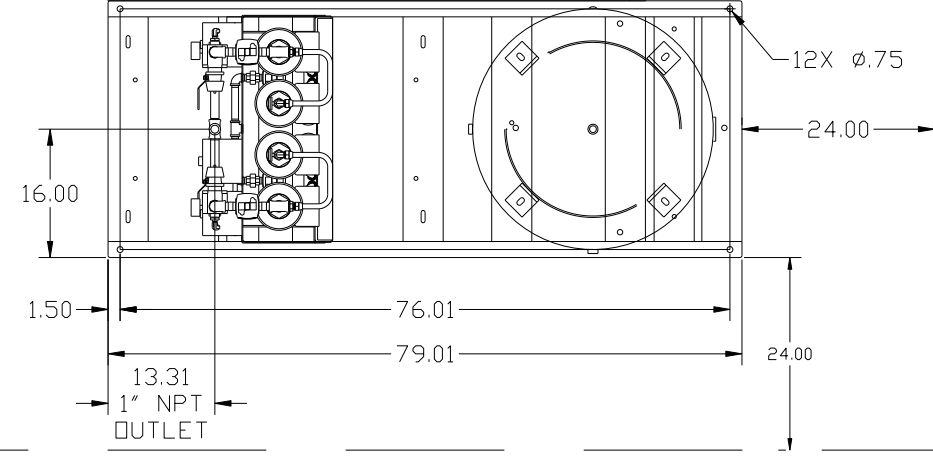
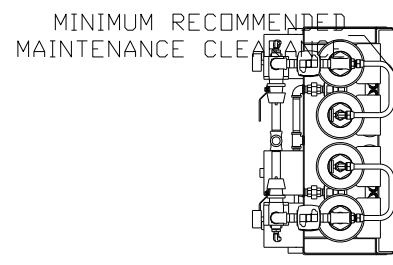
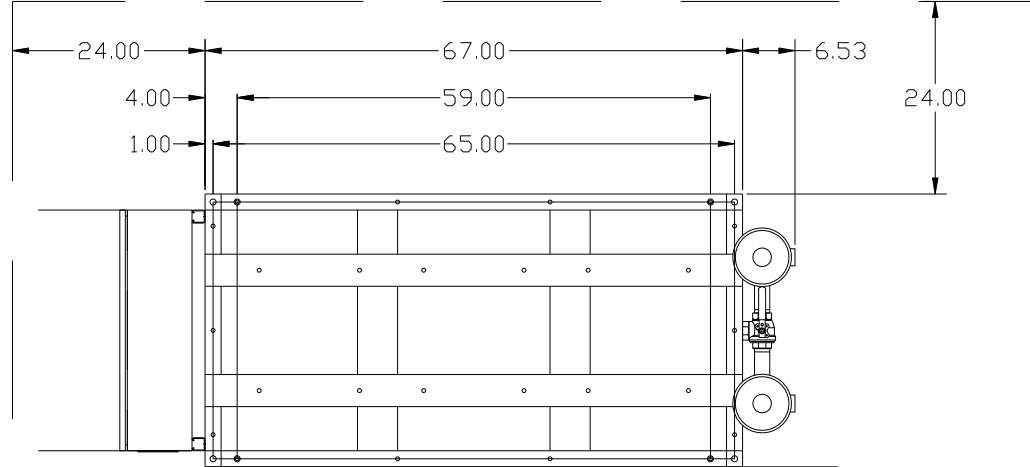
8 7 6 5 4 3 2 1

REV	ZONE	REVISION	DATE	ECN	NAME	CHKD
H-1	ALL	ADDED PBMI SHEETS	10/18/11	22609	AEK	GES
J-1	2 ALL	ADDED/UPDATED FLEX LINES	11/5/12	PXEC0009	AEK	DMS
K-1	2 B5-B5	ADDED/UPDATED FLEX LINES	11/13/12	PXEC0009	AEK	DMS
L-1	ALL	REMOVED MAIN DISC FROM BASIC CONTRL PANEL	4/22/14	PXEC0067	AEK	GES



ISOLATION PADS
6" X 6" X 1"(QTY.2)

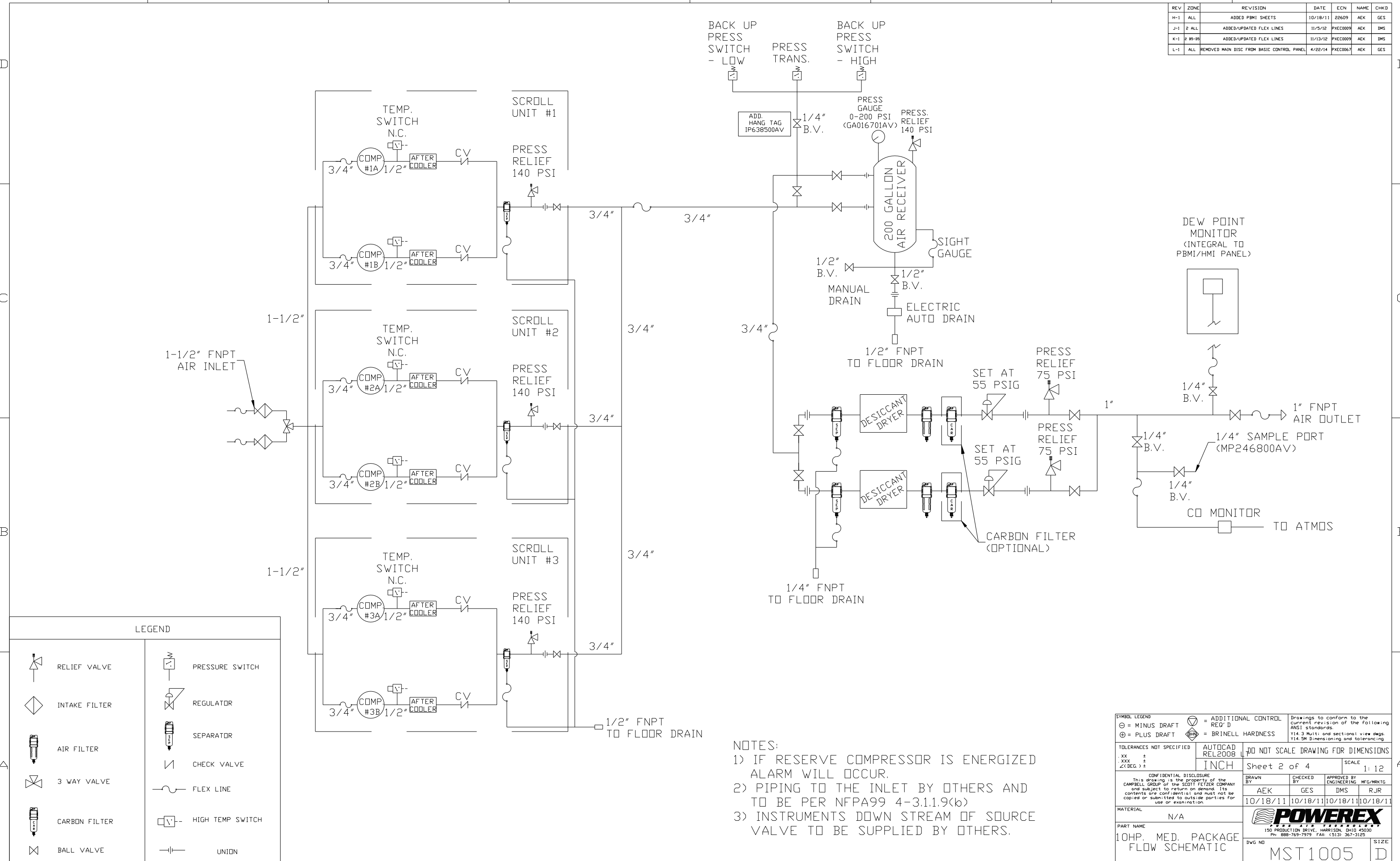
MINIMUM RECOMMENDED
ELECTRICAL PANEL
CLEARANCE PER OSHA/NEC
REQUIREMENTS



NOTE: SYSTEM DESIGNED IN COMPLIANCE WITH US NFPA'99, LATEST EDITION.

SYMBOL LEGEND		= MINUS DRAFT		= PLUS DRAFT		= ADDITIONAL CONTROL REQ'D		= BRINELL HARDNESS		Drawings to conform to the current revision of the following ANSI standards: Y14.3 Multi and sectional view dsgs. Y14.5M Dimensioning and tolerancing	
TOLERANCES NOT SPECIFIED		AUTOCAD REL2008		DO NOT SCALE DRAWING FOR DIMENSIONS		SCALE		Sheet 1 of 4		1:12	
CONFIDENTIAL DISCLOSURE		This drawing is the property of the CAMPBELL GROUP of the SCOTT FETZER COMPANY and subject to return on demand. Its contents are confidential and must not be copied or submitted to outside parties for use or examination.		DRAWN BY		CHECKED BY		APPROVED BY		MFG/MRKTG	
		AEK		GES		DMS		RJR		10/18/11 10/18/11 10/18/11 10/18/11	
MATERIAL		N/A		POWEREX		150 PRODUCTION DRIVE, HARRISON, OHIO 45030		Ph: 888-769-7979 FAX: (513) 367-3125		SIZE	
PART NAME		TRIPLEX DILLESS SCROLL 10HP, 200GAL. BASEMOUNT DUPLEX DESICCANT		DWG NO		MST1005		D		MST1005.dwg	

REV	ZONE	REVISION	DATE	ECN	NAME	CHKD
H-1	ALL	ADDED P&ID SHEETS	10/18/11	22609	AEK	GES
J-1	2 ALL	ADDED/UPDATED FLEX LINES	11/5/12	PXEC0009	AEK	DMS
K-1	2 BS-BS	ADDED/UPDATED FLEX LINES	11/13/12	PXEC0009	AEK	DMS
L-1	ALL	REMOVED MAIN DISC FROM BASIC CONTRL PANEL	4/22/14	PXEC0067	AEK	GES

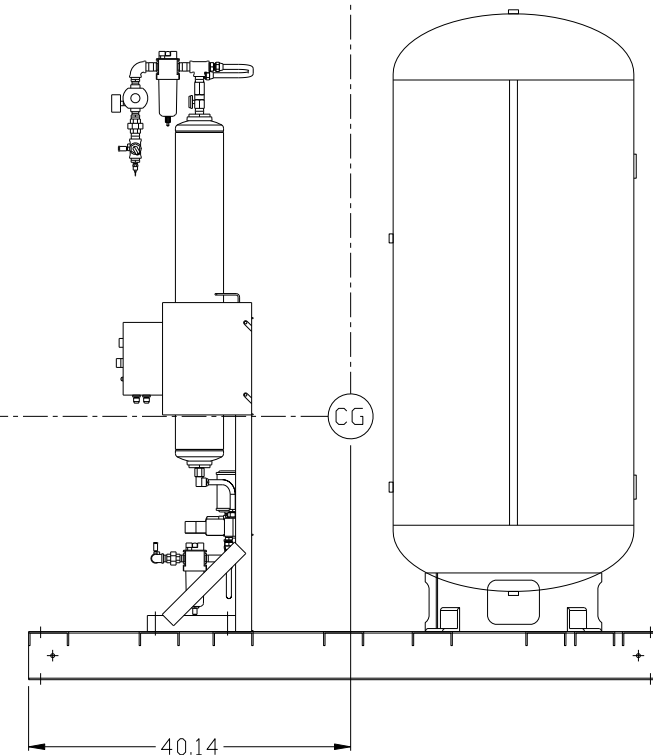
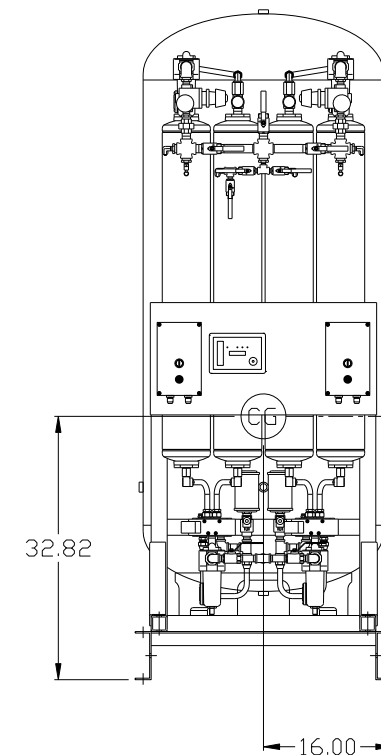
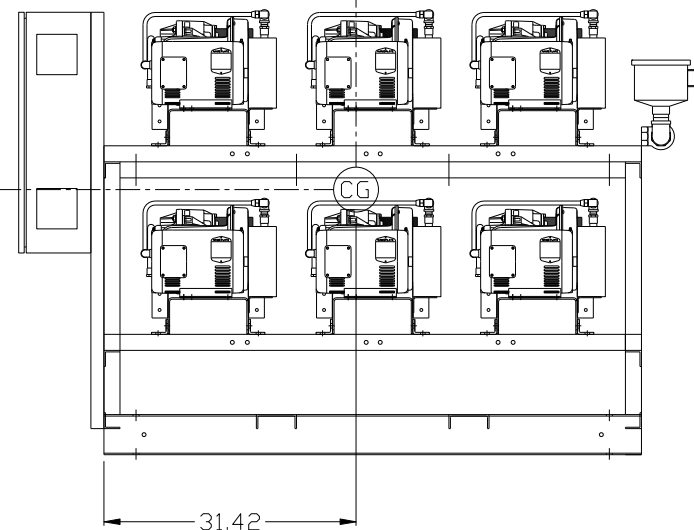
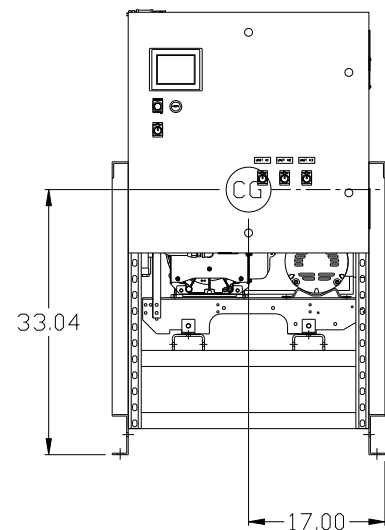
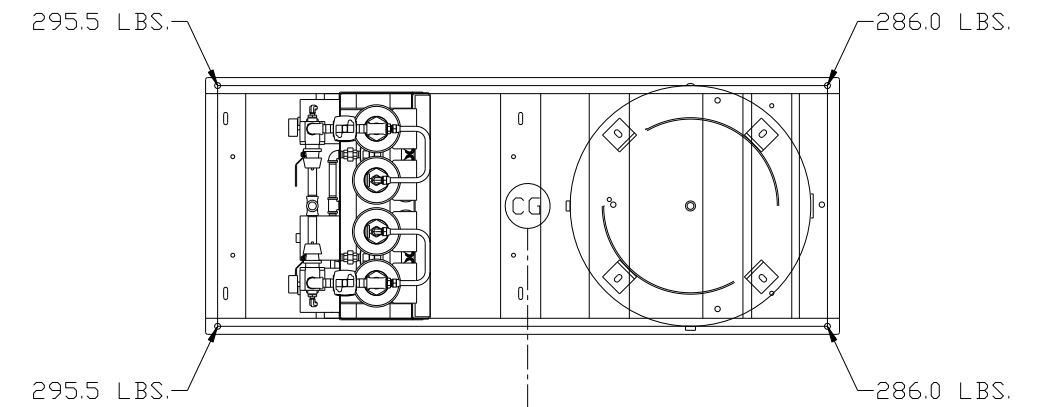
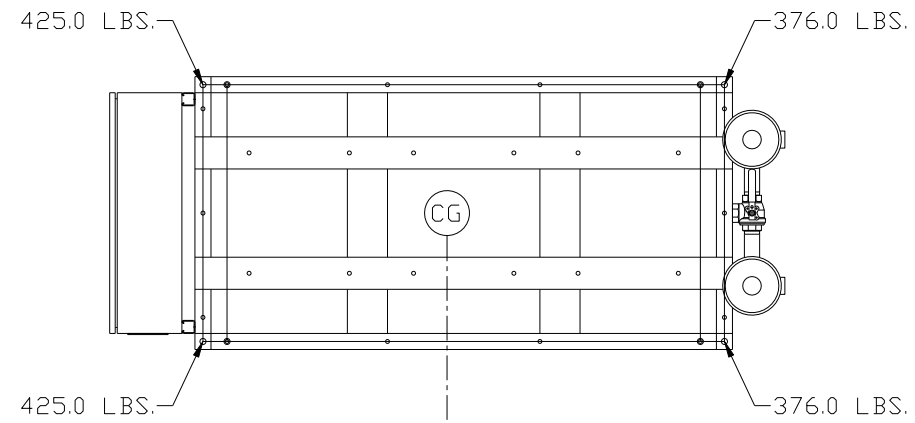


LEGEND	
	RELIEF VALVE
	INTAKE FILTER
	AIR FILTER
	3 WAY VALVE
	CARBON FILTER
	BALL VALVE
	PRESSURE SWITCH
	REGULATOR
	SEPARATOR
	CHECK VALVE
	FLEX LINE
	HIGH TEMP SWITCH
	UNION

- NOTES:
- 1) IF RESERVE COMPRESSOR IS ENERGIZED ALARM WILL OCCUR.
 - 2) PIPING TO THE INLET BY OTHERS AND TO BE PER NFPA99 4-3.1.1.9(b)
 - 3) INSTRUMENTS DOWN STREAM OF SOURCE VALVE TO BE SUPPLIED BY OTHERS.

SYMBOL LEGEND			ADDITIONAL CONTROL REQ'D	Drawings to conform to the current revision of the following ANSI standards:
	MINUS DRAFT		BRINELL HARDNESS	Y14.3 Multi and sectional view dsgs. Y14.5M Dimensioning and tolerancing
TOLERANCES NOT SPECIFIED		AUTOCAD REL2008	DO NOT SCALE DRAWING FOR DIMENSIONS	
.XX ±		INCH	Sheet 2 of 4	SCALE 1:12
.XXX ±				
<2 DEG ±				
CONFIDENTIAL DISCLOSURE This drawing is the property of the CAMPBELL GROUP of the SCOTT FETZER COMPANY and subject to return on demand. Its contents are confidential and must not be copied or submitted to outside parties for use or examination.				
DRAWN BY	CHECKED BY	ENGINEERING	APPROVED BY	MFG/MRKTG
AEK	GES	DMS	RJR	
10/18/11	10/18/11	10/18/11	10/18/11	10/18/11
MATERIAL		N/A		
PART NAME		10HP. MED. PACKAGE FLOW SCHEMATIC		
DWG NO		MST1005		
SIZE		D		

REV	ZONE	REVISION	DATE	ECN	NAME	CHKD
H-1	ALL	ADDED P&MI SHEETS	10/18/11	22609	AEK	GES
J-1	2 ALL	ADDED/UPDATED FLEX LINES	11/5/12	PXEC0009	AEK	DMS
K-1	2 B5-B5	ADDED/UPDATED FLEX LINES	11/13/12	PXEC0009	AEK	DMS
L-1	ALL	REMOVED MAIN DISC FROM BASIC CONTROL PANEL	4/22/14	PXEC0067	AEK	GES



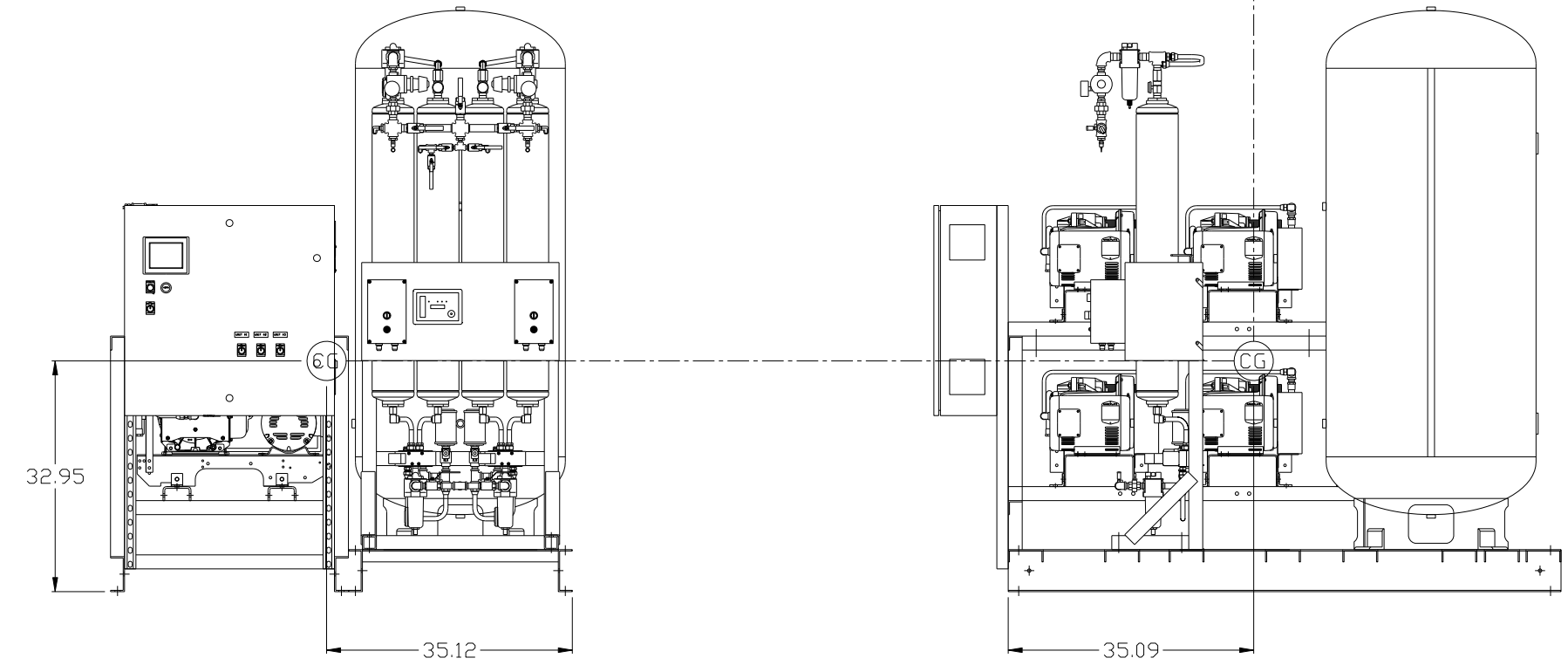
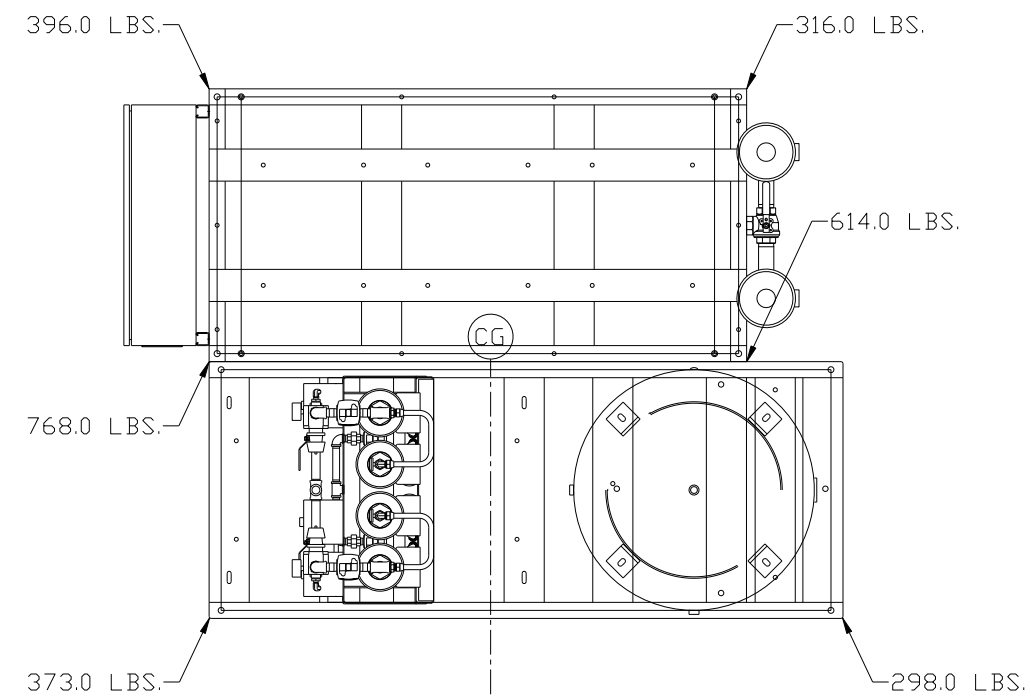
PUMP SKID:
TOTAL WEIGHT: 1602 LBS
C.O.G. DIMENSIONS
X (FRONT): -17"
Y (RIGHT): 31.42"
Z (HEIGHT): 33.04"

TANK/DRYER SKID:
TOTAL WEIGHT: 1163 LBS
C.O.G. DIMENSIONS
X (FRONT): -16"
Y (RIGHT): 40.14"
Z (HEIGHT): 32.82"

⊙ denotes center of gravity

SYMBOL LEGEND ⊖ = MINUS DRAFT ⊕ = PLUS DRAFT TOLERANCES NOT SPECIFIED .XX ± .XXX ± \angle (DEG) ±		= ADDITIONAL CONTROL REQ'D = BRINELL HARDNESS		Drawings to conform to the current revision of the following ANSI standards: Y14.3 Multi and sectional view dgs. Y14.5M Dimensioning and tolerancing
AUTOCAD REL2008 INCH		DO NOT SCALE DRAWING FOR DIMENSIONS Sheet 3 of 4 SCALE 1:12		
CONFIDENTIAL DISCLOSURE This drawing is the property of the CAMPBELL GROUP of the SCOTT FETZER COMPANY and subject to return on demand. Its contents are confidential and must not be copied or submitted to outside parties for use or examination.		DRAWN BY AEK	CHECKED BY GES	APPROVED BY ENGINEERING MFG/MKTG DMS RJR
MATERIAL N/A		10/18/11	10/18/11	10/18/11 10/18/11
PART NAME TRIPLEX DILLESS SCROLL 10HP, 200GAL. BASEMOUNT DUPLEX DESICCANT		 150 PRODUCTION DRIVE, HARRISON, OHIO 45030 Ph 888-769-7979 FAX (513) 367-3125		DWG NO MST1005 SIZE D

REV	ZONE	REVISION	DATE	ECN	NAME	CHKD
H-1	ALL	ADDED PBM1 SHEETS	10/18/11	22609	AEK	GES
J-1	2 ALL	ADDED/UPDATED FLEX LINES	11/5/12	PXEC0009	AEK	DMS
K-1	2 B5-B5	ADDED/UPDATED FLEX LINES	11/13/12	PXEC0009	AEK	DMS
L-1	ALL	REMOVED MAIN DISC FROM BASIC CONTROL PANEL	4/22/14	PXEC0067	AEK	GES



SYSTEM:
TOTAL WEIGHT: 2765 LBS
C.O.G. DIMENSIONS
X (FRONT): -35.12"
Y (RIGHT): 35.17"
Z (HEIGHT): 32.38"

(CG) denotes center of gravity

SYMBOL LEGEND ⊖ = MINUS DRAFT ⊕ = PLUS DRAFT ⊖ = ADDITIONAL CONTROL REQ'D ⊖ = BRINELL HARDNESS		Drawings to conform to the current revision of the following ANSI standards: Y14.3 Multi and sectional view dsgs. Y14.5M Dimensioning and tolerancing	
TOLERANCES NOT SPECIFIED .XX ± .XXX ± <<DEG> ±		AUTOCAD REL2008 INCH	
CONFIDENTIAL DISCLOSURE This drawing is the property of the CAMPBELL GROUP OF THE SCOTT FETZER COMPANY and subject to return on demand. Its contents are confidential and must not be copied or submitted to outside parties for use or examination.		DO NOT SCALE DRAWING FOR DIMENSIONS Sheet 4 of 4 SCALE 1:12	
MATERIAL N/A		POWEREX 150 PRODUCTION DRIVE, HARRISON, OHIO 45030 Ph: 888-769-7979 FAX: (513) 367-3125	
PART NAME TRIPLEX DILLESS SCROLL 10HP, 200GAL. BASEMOUNT DUPLEX DESICCANT		DWG NO MST1005	