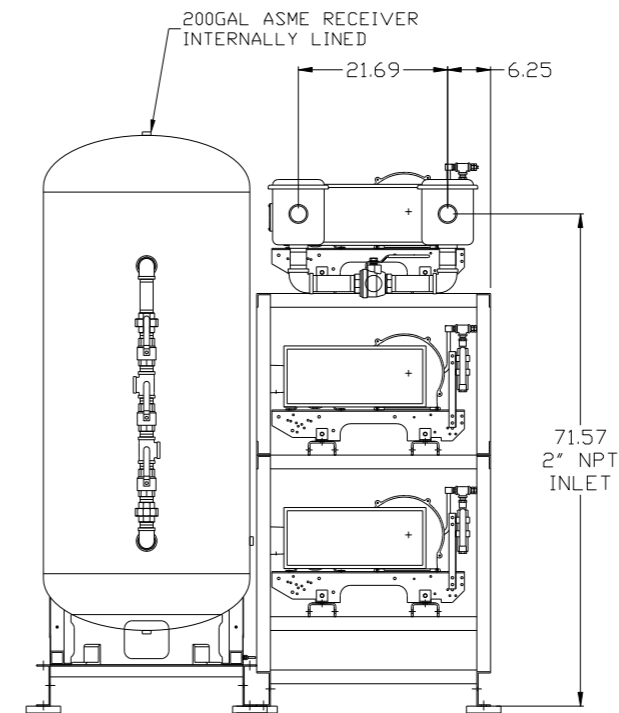
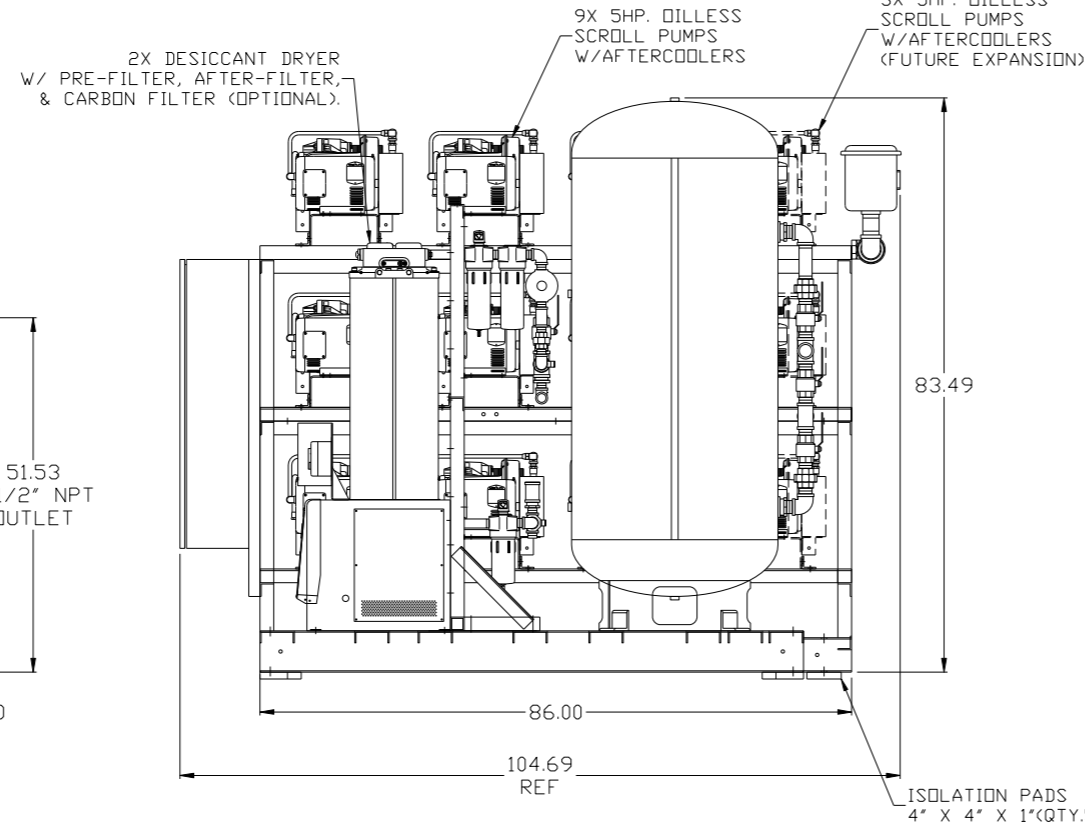
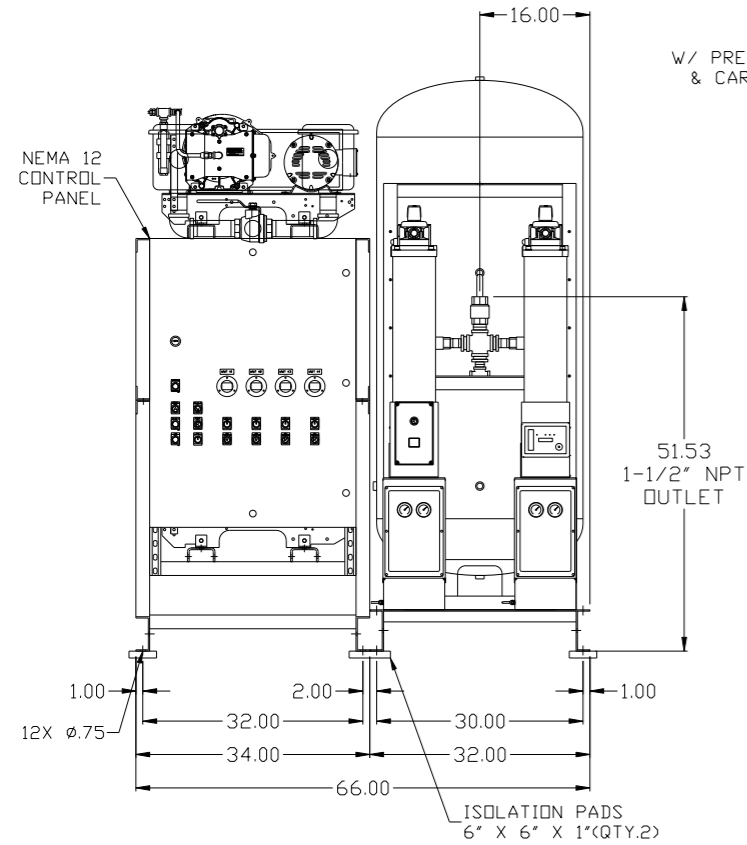
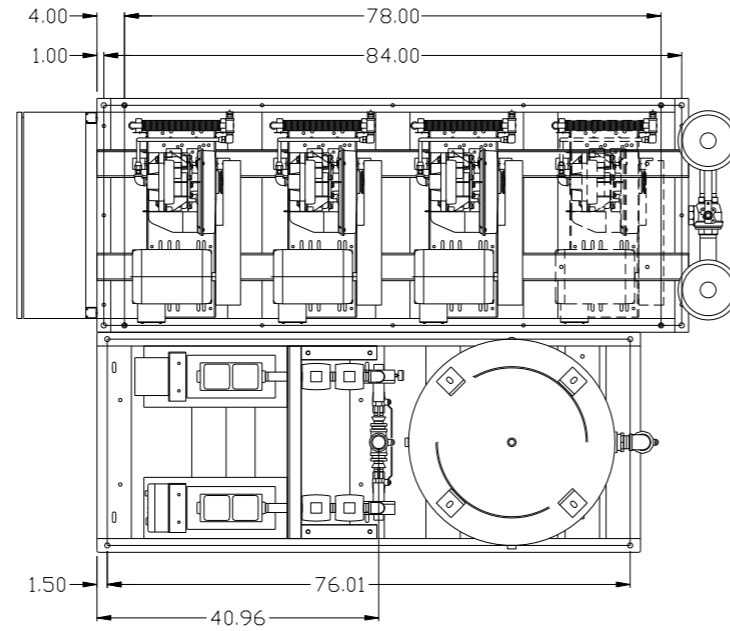


REV	ZONE	REVISION	DATE	ECN	NAME	CHKD
B-1	ALL	RELEASE TO PRODUCTION	10/28/09	22126	AEK	GES
C-1	ALL	UPDATED MULTI-SCROLL FRAMES	4/27/10	22405	AEK	GES
D-1	ALL	ADDED CGG INFO (SHEETS 3-5)	2/13/12	22723	AEK	GES
E-1	2 ALL	CORRECTED/ADDED FLEX HOSES	9/10/12	22723	AEK	DMS
	ALL	ADDED PBM/HMI SHEETS				
E-2	2 A6-D6	ADDED UNIONS	12/19/12	22723	AEK	DMS
F-1	2 A6-D6	CORRECTED INLET PLUMBING SIZE	4/17/13	PXEC0030	AEK	GES



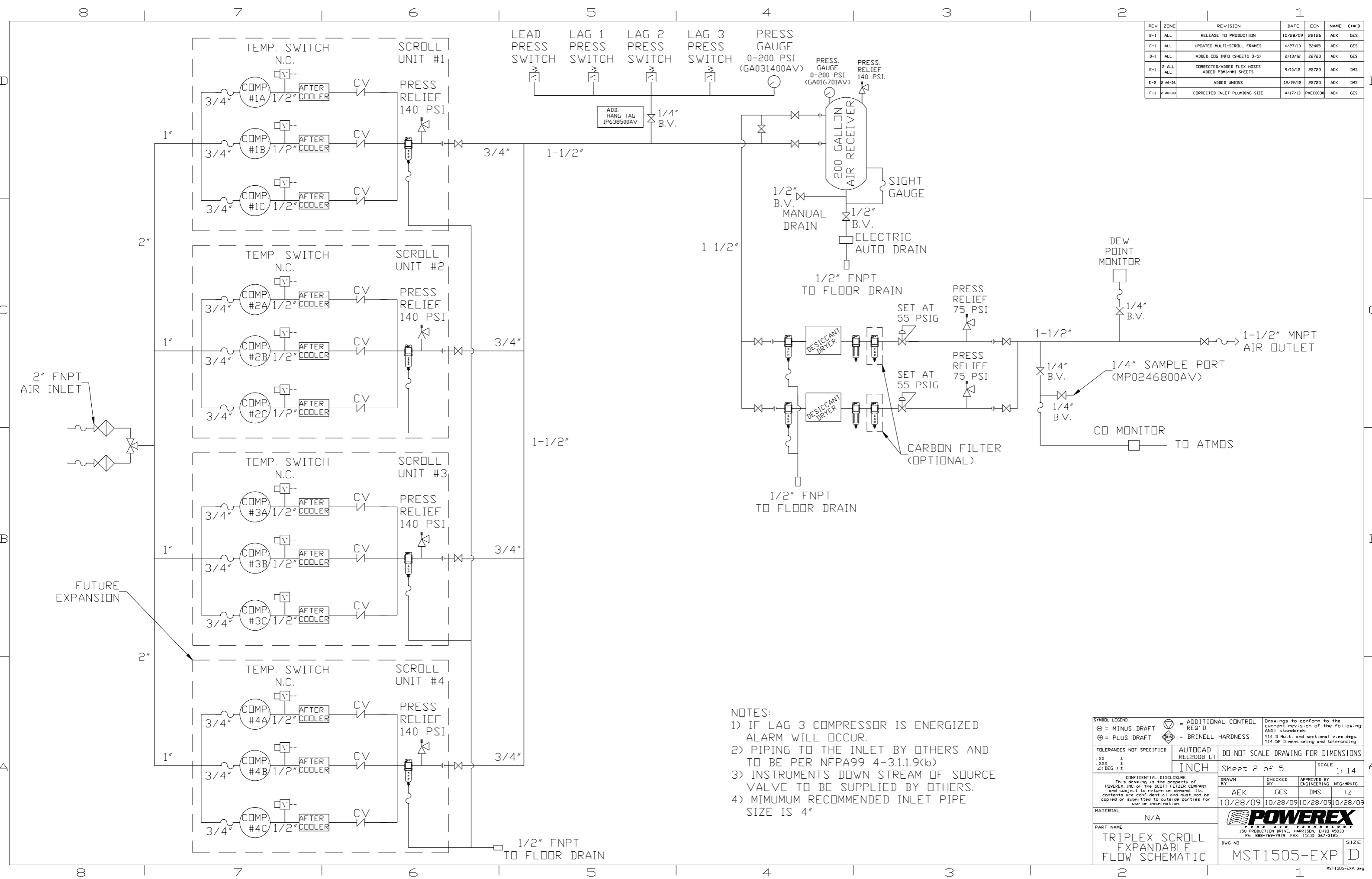
NOTE: EXPANSION PUMPS NOT SHOWN IN THIS VIEW FOR CLARITY.

NOTE: SYSTEM DESIGNED IN COMPLIANCE WITH US NFPA'99, LATEST EDITION.

NOTE: A MINIMUM OF 24" CLEARANCE IS RECOMMENDED AROUND THE ENTIRE UNIT.

SYMBOL LEGEND ⊖ = MINUS DRAFT ⊕ = PLUS DRAFT ⊕ = ADDITIONAL CONTROL REQ'D ⊕ = BRINELL HARDNESS		Drawings to conform to the current revision of the following ANSI standards: Y14.3 Multi and sectional view dgs. Y14.5M Dimensioning and tolerancing	
TOLERANCES NOT SPECIFIED .XX ± .XXX ± \angle (DEG) ±		AUTOCAD REL2008 LT INCH DO NOT SCALE DRAWING FOR DIMENSIONS Sheet 1 of 5 SCALE 1:14	
CONFIDENTIAL DISCLOSURE This drawing is the property of POWEREX, INC. of the SCOTT FELTZER COMPANY and subject to return on demand. Its contents are confidential and must not be copied or submitted to outside parties for use or examination.			
DRAWN BY AEK		CHECKED BY GES	
APPROVED BY DMS		ENGINEERING MFG/MKTG TZ	
MATERIAL N/A		DATE 10/28/09	
PART NAME TRIPLEX EXP DILLESS SCROLL 15HP 200GAL BASEMOUNT DUPLEX DESICCANT		DATE 10/28/09	
DWG NO MST1505-EXP		SIZE D	

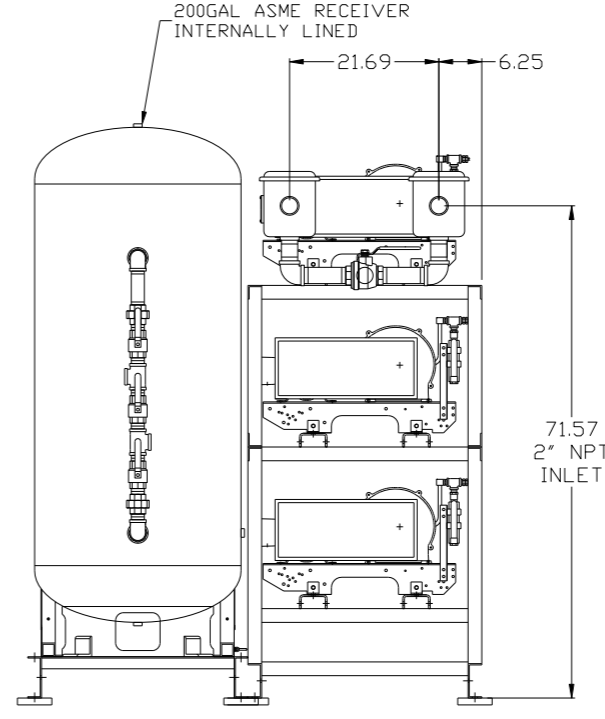
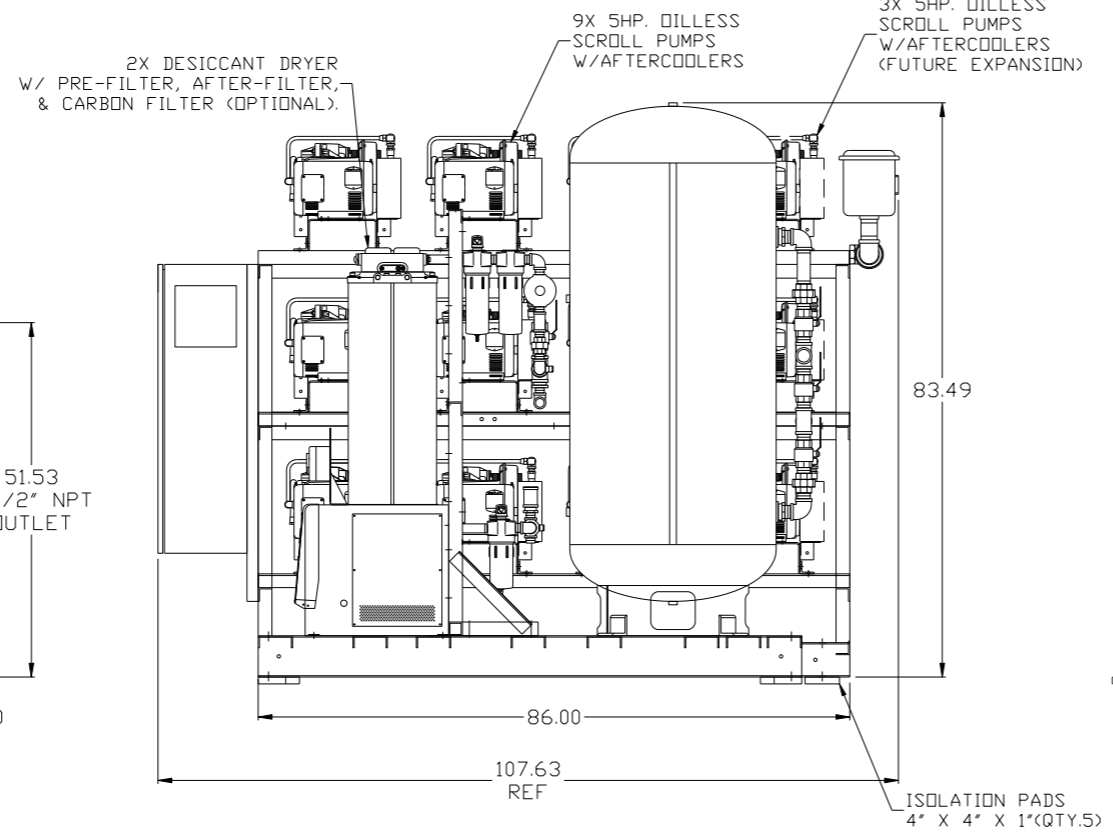
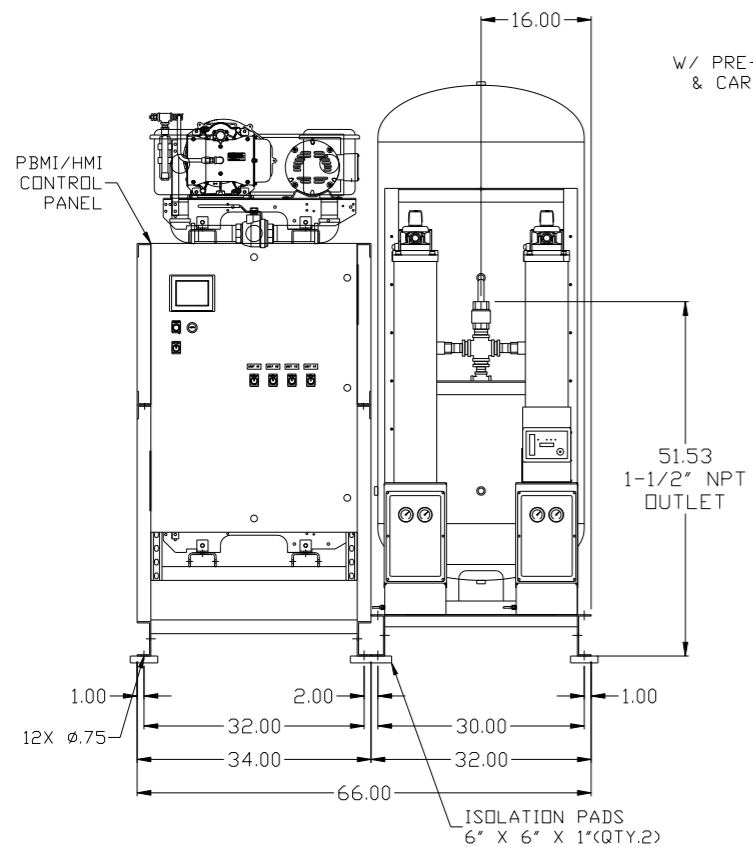
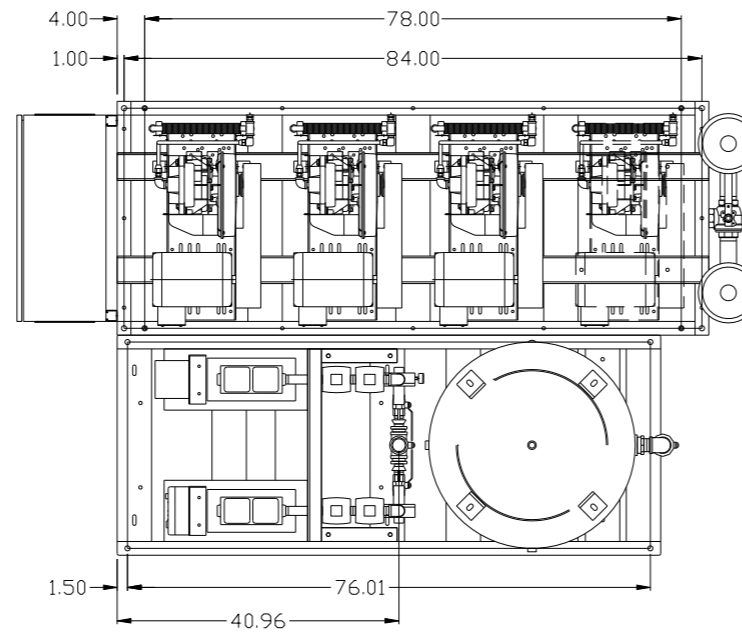
REV	ZONE	REVISION	DATE	ECN	NAME	CHKD
B-1	ALL	RELEASE TO PRODUCTION	10/28/09	22126	AEK	GES
C-1	ALL	UPDATED MULTI-SCROLL FRAMES	4/27/10	22405	AEK	GES
D-1	ALL	ADDED COG INFO (SHEETS 3-5)	2/13/12	22723	AEK	GES
E-1	2 ALL	CORRECTED/ADDED FLEX HOSES ADDED PBM/HMI SHEETS	9/10/12	22723	AEK	DMS
E-2	2 A6-D6	ADDED UNIONS	12/19/12	22723	AEK	DMS
F-1	2 A6-D6	CORRECTED INLET PLUMBING SIZE	4/17/13	PXEC0030	AEK	GES



- NOTES:
- 1) IF LAG 3 COMPRESSOR IS ENERGIZED ALARM WILL OCCUR.
 - 2) PIPING TO THE INLET BY OTHERS AND TO BE PER NFPA99 4-3.1.1.9(b)
 - 3) INSTRUMENTS DOWN STREAM OF SOURCE VALVE TO BE SUPPLIED BY OTHERS.
 - 4) MINIMUM RECOMMENDED INLET PIPE SIZE IS 4"

SYMBOL LEGEND		= ADDITIONAL CONTROL REQ'D		Drawings to conform to the current revision of the following ANSI standards:	
⊖	MINUS DRAFT	⊕	PLUS DRAFT	⊖	ANSI Y14.3 Multi and sectional view dgs.
⊕	PLUS DRAFT	⊖	MINUS DRAFT	⊖	ANSI Y14.5M Dimensioning and tolerancing
⊖	MINUS DRAFT	⊕	PLUS DRAFT	⊖	ANSI Y14.3 Multi and sectional view dgs.
⊕	PLUS DRAFT	⊖	MINUS DRAFT	⊖	ANSI Y14.5M Dimensioning and tolerancing
TOLERANCES NOT SPECIFIED		AUTOCAD REL2008 LT		DO NOT SCALE DRAWING FOR DIMENSIONS	
.XX	±	INCH		Sheet 2 of 5	
.XXX	±			SCALE 1:14	
<<DEG>>	±				
CONFIDENTIAL DISCLOSURE					
This drawing is the property of POWEREX, INC. of the SCOTT FETZER COMPANY and subject to return on demand. Its contents are confidential and must not be copied or submitted to outside parties for use or examination.					
DRAWN BY		CHECKED BY		APPROVED BY	
AEK		GES		DMS TZ	
10/28/09		10/28/09		10/28/09 10/28/09	
MATERIAL N/A					
PART NAME					
TRIPLEX SCROLL EXPANDABLE FLOW SCHEMATIC					
DWG NO				SIZE	
MST1505-EXP				D	

REV	ZONE	REVISION	DATE	ECN	NAME	CHKD
E-1	2 ALL	CORRECTED/ADDED FLEX HOSES ADDED PBMI/HMI SHEETS	9/10/12	22723	AEK	DMS
E-2	2 A6-D6	ADDED UNIONS	12/19/12	22723	AEK	DMS
F-1	2 A9-D9	CORRECTED INLET PLUMBING SIZE	4/17/13	PXEC0030	AEK	GES



NOTE: EXPANSION PUMPS NOT SHOWN IN THIS VIEW FOR CLARITY.

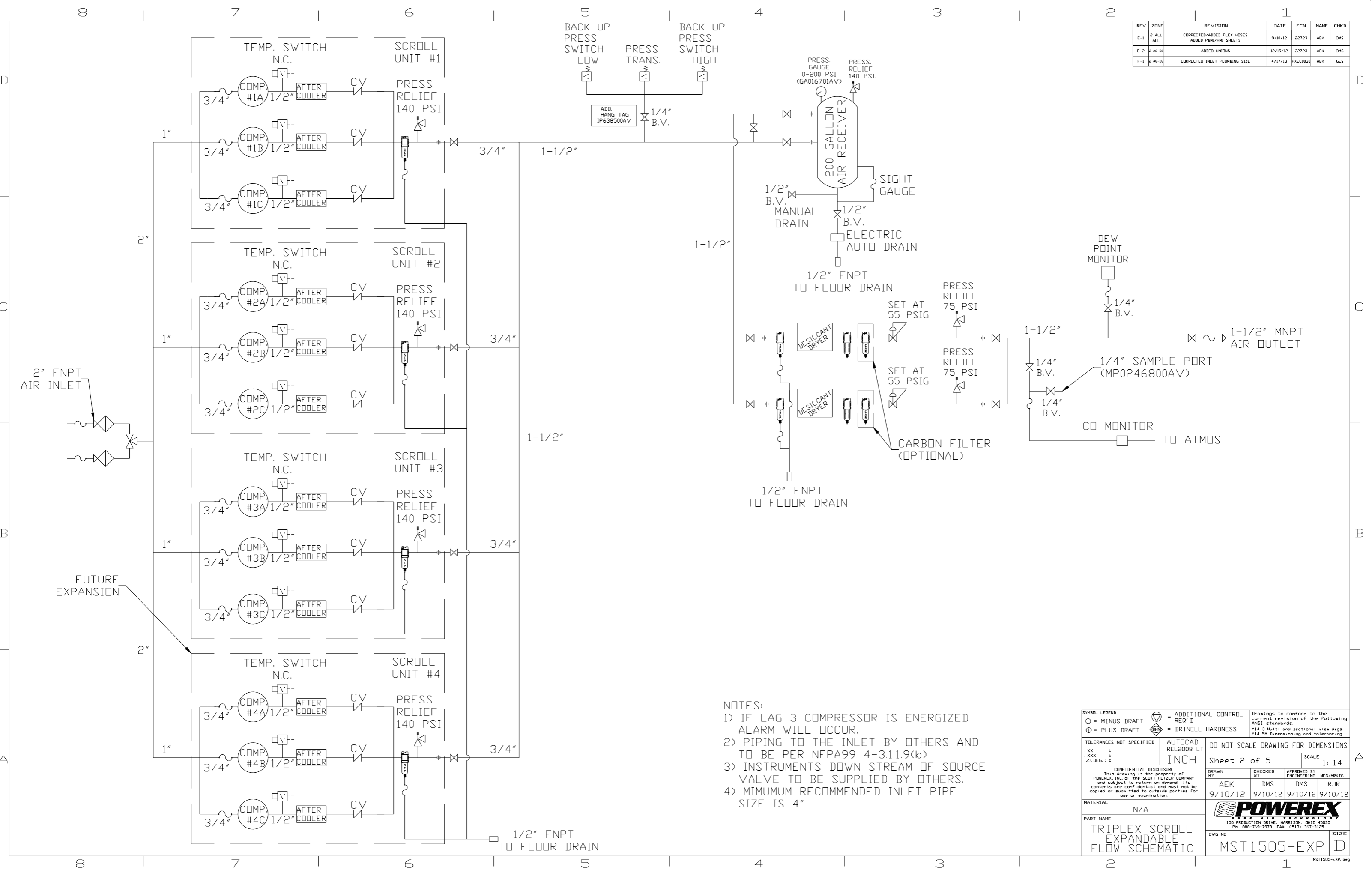
NOTE: SYSTEM DESIGNED IN COMPLIANCE WITH US NFPA'99, LATEST EDITION.

NOTE: CENTER OF GRAVITY FOR SYSTEM WITH PBMI/HMI PANEL IS COMPARABLE TO STANDARD SYSTEM CENTER OF GRAVITY. (SEE SHEETS 3-5 FOR CENTER OF GRAVITY)

NOTE: A MINIMUM OF 24\"/>

SYMBOL LEGEND ⊖ = MINUS DRAFT ⊕ = PLUS DRAFT ⊕ = ADDITIONAL CONTROL REQ'D HRC = BRINELL HARDNESS		Drawings to conform to the current revision of the following ANSI standards: Y14.3 Multi and sectional view dgs. Y14.5M Dimensioning and tolerancing	
TOLERANCES NOT SPECIFIED .XX ± .XXX ± \angle(DEG.) ±		DO NOT SCALE DRAWING FOR DIMENSIONS SCALE: 1:14 SHEET 1 OF 5	
CONFIDENTIAL DISCLOSURE This drawing is the property of POWEREX, INC. of the SCOTT FELTZER COMPANY and subject to return on demand. Its contents are confidential and must not be copied or submitted to outside parties for use or examination.		DRAWN BY: AEK CHECKED BY: DMS ENGINEERING: DMS MFG/MKTG: RJR 9/10/12 9/10/12 9/10/12 9/10/12	
MATERIAL: N/A		POWEREX 150 PRODUCTION DRIVE, HARRISON, OHIO 45030 Ph: 888-769-7979 FAX: (513) 367-3125	
PART NAME: TRIPLEX EXP DILLESS SCROLL 15HP 200GAL BASEMOUNT DUPLEX DESICCANT		DWG NO: MST1505-EXP SIZE: D	

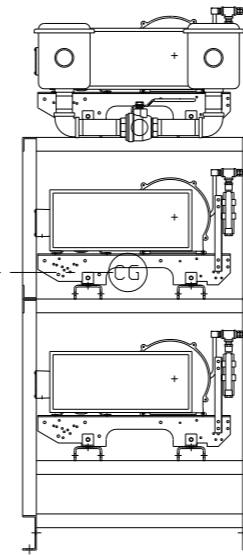
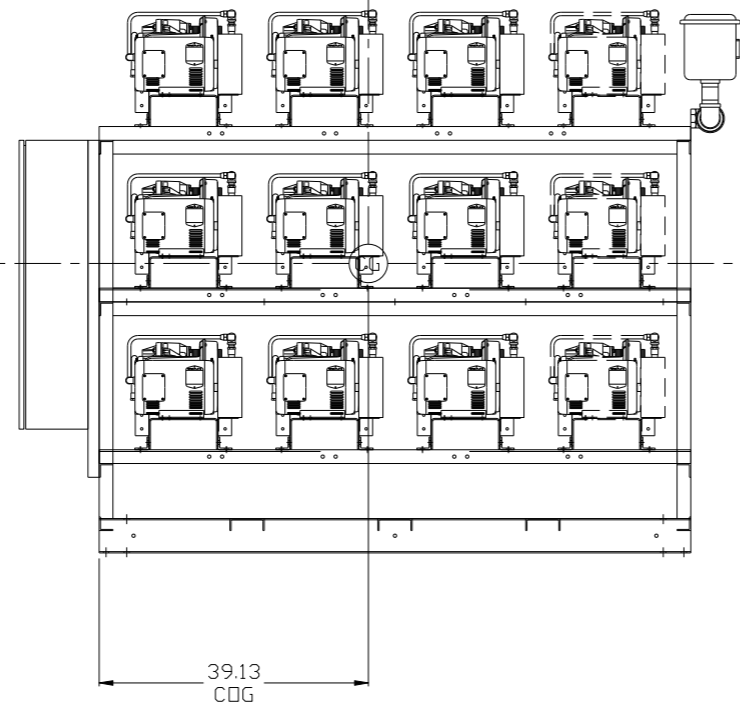
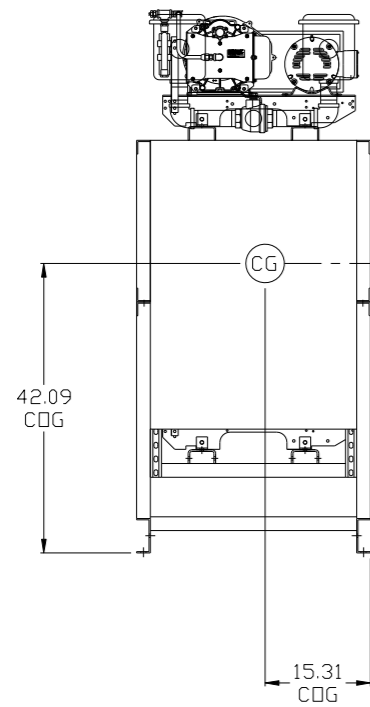
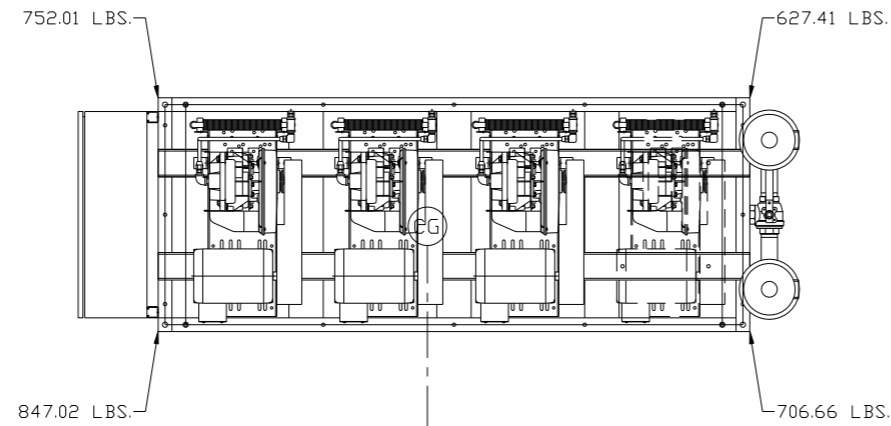
REV	ZONE	REVISION	DATE	ECN	NAME	CHKD
E-1	2 ALL	CORRECTED/ADDED FLEX HOSES ADDED PBM/HMI SHEETS	9/10/12	22723	AEK	DMS
E-2	2 A6-D6	ADDED UNIONS	12/19/12	22723	AEK	DMS
F-1	2 A9-D9	CORRECTED INLET PLUMBING SIZE	4/17/13	PXEC0030	AEK	GES



- NOTES:
- 1) IF LAG 3 COMPRESSOR IS ENERGIZED ALARM WILL OCCUR.
 - 2) PIPING TO THE INLET BY OTHERS AND TO BE PER NFPA99 4-3.1.1.9(b)
 - 3) INSTRUMENTS DOWN STREAM OF SOURCE VALVE TO BE SUPPLIED BY OTHERS.
 - 4) MINIMUM RECOMMENDED INLET PIPE SIZE IS 4"

SYMBOL LEGEND		AUTOCAD REL2008 LT		DO NOT SCALE DRAWING FOR DIMENSIONS	
⊖	MINUS DRAFT	+	PLUS DRAFT	Sheet	2 of 5
⊕	PLUS DRAFT	INCH		SCALE	1:14
TOLERANCES NOT SPECIFIED		.XX ±		DRAWN BY	
.XXX ±		< < DEG > ±		CHECKED BY	
CONFIDENTIAL DISCLOSURE		This drawing is the property of POWEREX, INC. OF THE SCOTT FETZER COMPANY and subject to return on demand. Its contents are confidential and must not be copied or submitted to outside parties for use or examination.		APPROVED BY	
MATERIAL		N/A		ENGINEERING MFG/MKTG	
PART NAME		TRIPLEX SCROLL EXPANDABLE FLOW SCHEMATIC		DRAWN BY	
DWG NO		MST1505-EXP		CHECKED BY	
SIZE		D		ENGINEERING	
				DMS	
				DMS	
				RJR	
				9/10/12	
				9/10/12	
				9/10/12	
				9/10/12	

REV	ZONE	REVISION	DATE	ECN	NAME	CHKD
D-1	ALL	ADDED CDG INFO (SHEETS 3-5)	2/13/12	22723	AEK	GES
E-1	2 ALL	CORRECTED/ADDED FLEX HOSES ADDED PBM/HMI SHEETS	9/10/12	22723	AEK	DMS
E-2	2 A6-D6	ADDED UNIONS	12/19/12	22723	AEK	DMS
F-1	2 A8-D8	CORRECTED INLET PLUMBING SIZE	4/17/13	PXEC0030	AEK	GES



NOTE: EXPANSION PUMPS
NOT SHOWN IN THIS VIEW
FOR CLARITY.

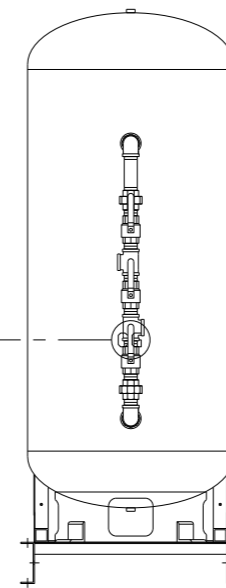
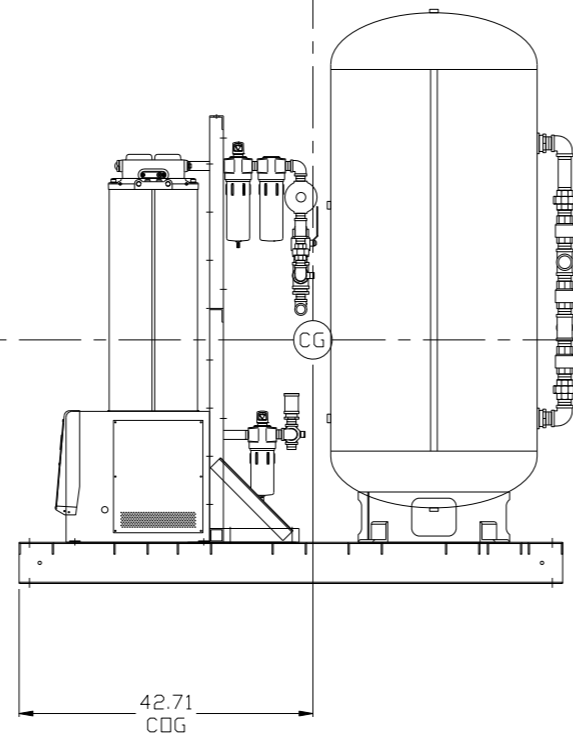
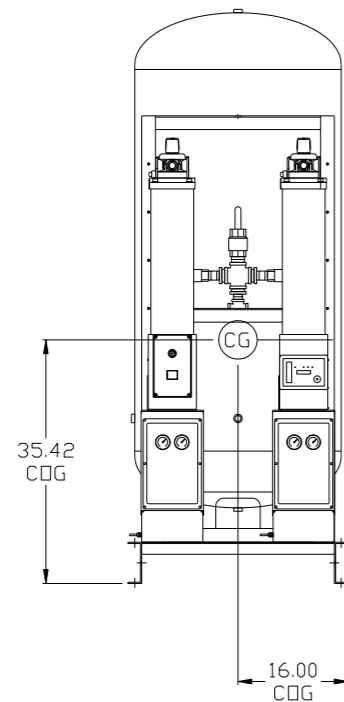
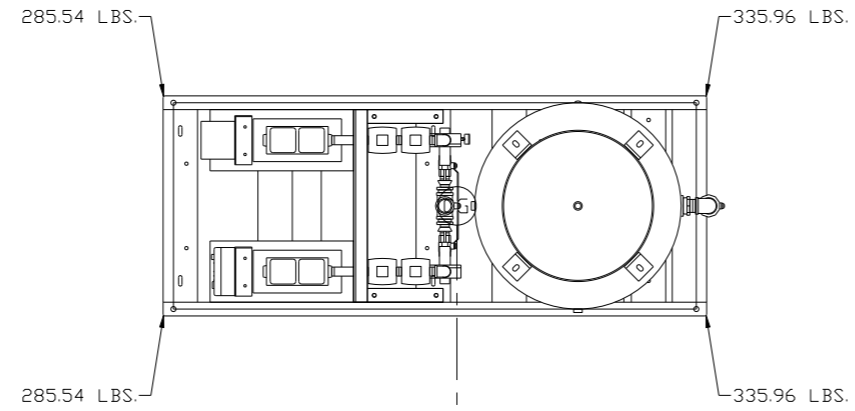
NOTE: CENTER OF GRAVITY CALCULATED
WITH EXPANSION PUMPS INSTALLED.

PUMP SKID:
TOTAL WEIGHT: 2934 LBS
C.O.G. DIMENSIONS
X (FRONT): -15.31"
Y (RIGHT): 39.13"
Z (HEIGHT): 42.09"

(CG) denotes center of gravity

SYMBOL LEGEND		ADDITIONAL CONTROL REQ'D		Drawings to conform to the current revision of the following ANSI standards:	
⊖ = MINUS DRAFT	⊕ = PLUS DRAFT	Ⓢ = SURFACE FINISH	Ⓜ = BRINELL HARDNESS	Y14.3 Multi and sectional view deqs.	Y14.5M Dimensioning and tolerancing
TOLERANCES NOT SPECIFIED		AUTOCAD REL2008 LT	DO NOT SCALE DRAWING FOR DIMENSIONS		
.XX ±	.XXX ±	INCH	Sheet 3 of 5	SCALE 1: 14	
CONFIDENTIAL DISCLOSURE This drawing is the property of POWEREX, INC. of the SCOTT FETZER COMPANY and subject to return on demand. Its contents are confidential and must not be copied or submitted to outside parties for use or examination.		DRAWN BY AEK	CHECKED BY GES	APPROVED BY ENGINEERING DMS	MFG/MKTG RJR
MATERIAL N/A		2/13/12	2/13/12	2/13/12	2/13/12
PART NAME TRIPLEX EXP DILLESS SCROLL 15HP 200GAL BASEMOUNT DUPLEX DESICCANT		 150 PRODUCTION DRIVE, HARRISON, OHIO 45030 Ph: 888-769-7979 FAX: (513) 367-3125		DWG NO MST1505-EXP	SIZE D

REV	ZONE	REVISION	DATE	ECN	NAME	CHKD
D-1	ALL	ADDED CDG INFO (SHEETS 3-5)	2/13/12	22723	AEK	GES
E-1	2 ALL	CORRECTED/ADDED FLEX HOSES ADDED PBM/HMI SHEETS	9/10/12	22723	AEK	DMS
E-2	2 A6-D6	ADDED UNIONS	12/19/12	22723	AEK	DMS
F-1	2 A6-D6	CORRECTED INLET PLUMBING SIZE	4/17/13	PXEC0030	AEK	GES



DRYER SKID:
 TOTAL WEIGHT: 1243 LBS
 C.D.G. DIMENSIONS
 X (FRONT): -16"
 Y (RIGHT): 42.71"
 Z (HEIGHT): 35.42"

(CG) denotes center of gravity

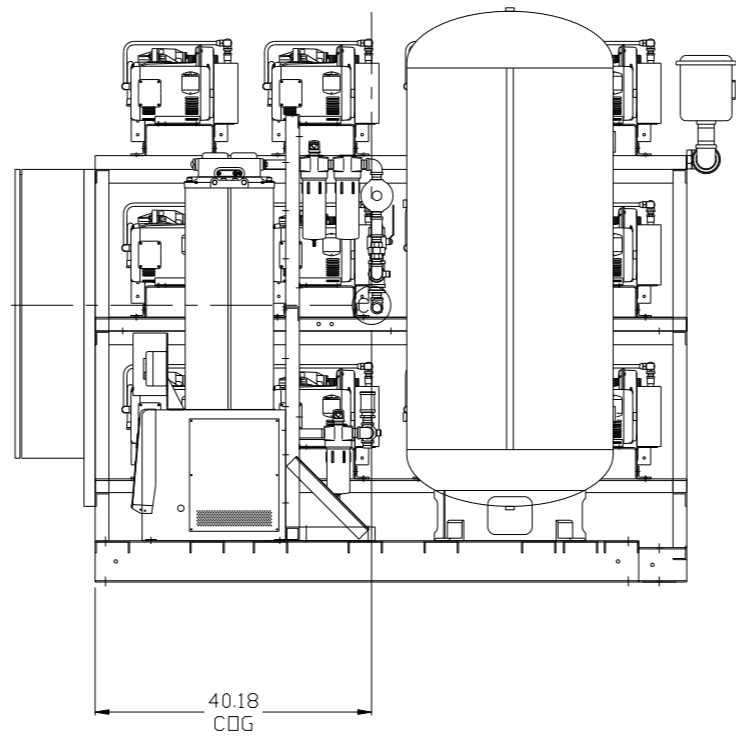
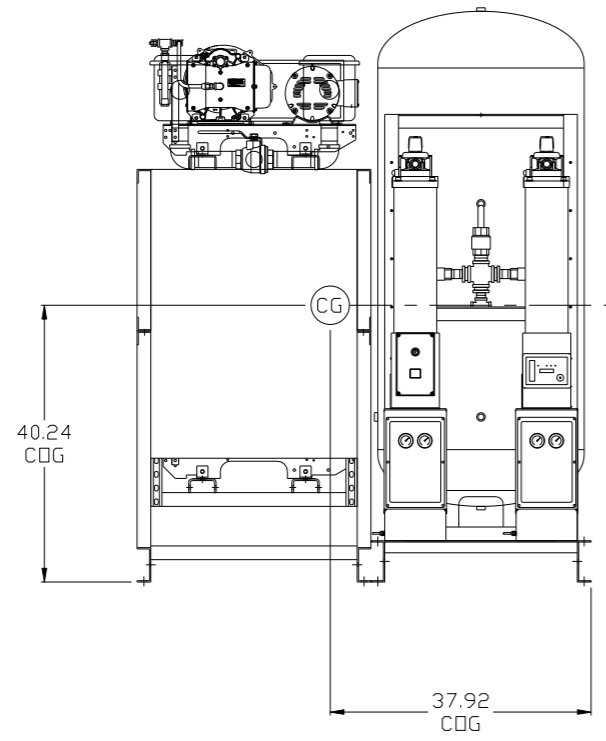
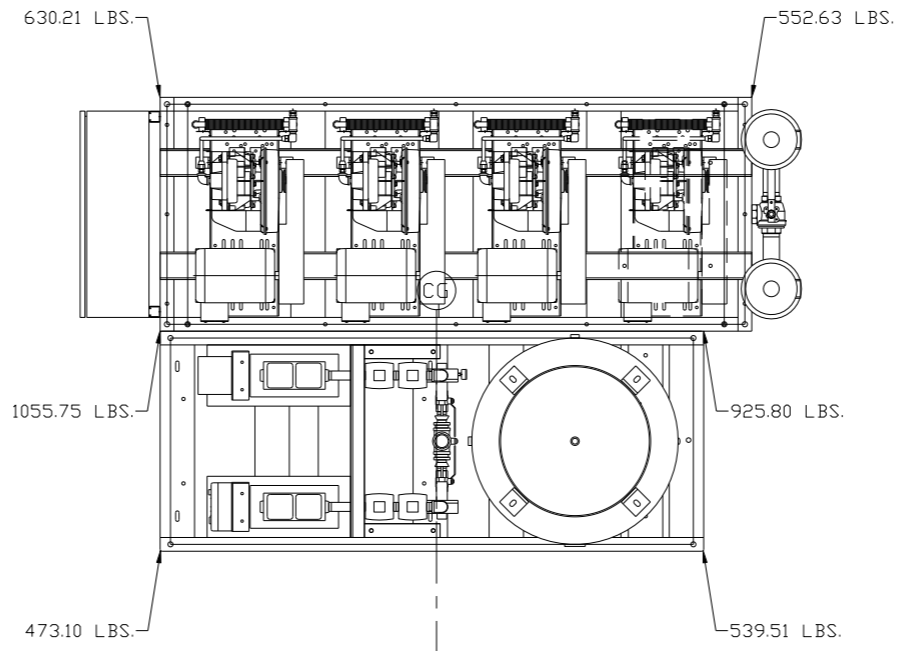
SYMBOL LEGEND		= ADDITIONAL CONTROL REQ'D		Drawings to conform to the current revision of the following ANSI standards:	
⊖	MINUS DRAFT	⊕	PLUS DRAFT	⊖	ANSI Y14.3 Multi and sectional view dgs.
⊕	PLUS DRAFT	⊖	MINUS DRAFT	⊖	ANSI Y14.5M Dimensioning and tolerancing
⊖	MINUS DRAFT	⊕	PLUS DRAFT	⊖	ANSI Y14.3 Multi and sectional view dgs.
⊕	PLUS DRAFT	⊖	MINUS DRAFT	⊖	ANSI Y14.5M Dimensioning and tolerancing

TOLERANCES NOT SPECIFIED	AUTOCAD REL2008 LT	DO NOT SCALE DRAWING FOR DIMENSIONS	
.XX ±	INCH	Sheet 4 of 5	SCALE 1:14
.XXX ±			
<Z(DEG) ±			

CONFIDENTIAL DISCLOSURE This drawing is the property of POWEREX, INC. of the SCOTT FETZER COMPANY and subject to return on demand. Its contents are confidential and must not be copied or submitted to outside parties for use or examination.			
DRAWN BY	CHECKED BY	APPROVED BY	MFG/MRKTG
AEK	GES	DMS	RJR
2/13/12	2/13/12	2/13/12	2/13/12

MATERIAL	N/A	 150 PRODUCTION DRIVE, HARRISON, OHIO 45030 Ph: 888-769-7979 FAX: (513) 367-3125
PART NAME	TRIPLEX EXP DILLESS SCROLL 15HP 200GAL BASEMOUNT DUPLEX DESICCANT	
DWG NO	MST1505-EXP	SIZE D

REV	ZONE	REVISION	DATE	ECN	NAME	CHKD
D-1	ALL	ADDED COG INFO (SHEETS 3-5)	2/13/12	22723	AEK	GES
E-1	2 ALL	CORRECTED/ADDED FLEX HOSES ADDED PBM/HMI SHEETS	9/10/12	22723	AEK	DMS
E-2	2 A6-D6	ADDED UNIONS	12/19/12	22723	AEK	DMS
F-1	2 A8-D8	CORRECTED INLET PLUMBING SIZE	4/17/13	PXEC0030	AEK	GES



SYSTEM:
TOTAL WEIGHT: 4177 LBS
C.D.G. DIMENSIONS
X (FRONT): -37.92"
Y (RIGHT): 40.18"
Z (HEIGHT): 40.24"

(CG) denotes center of gravity

NOTE: CENTER OF GRAVITY CALCULATED WITH EXPANSION PUMPS INSTALLED.

SYMBOL LEGEND ⊖ = MINUS DRAFT ⊕ = PLUS DRAFT ⊕ = ADDITIONAL CONTROL REQ'D ⊕ = BRINELL HARDNESS		Drawings to conform to the current revision of the following ANSI standards: Y14.3 Multi and sectional view dsgs. Y14.5M Dimensioning and tolerancing	
TOLERANCES NOT SPECIFIED .XX ± .XXX ± <<DEG> ±		AUTOCAD REL2008 LT INCH	
CONFIDENTIAL DISCLOSURE This drawing is the property of POWEREX, INC. of the SCOTT FETZER COMPANY and subject to return on demand. Its contents are confidential and must not be copied or submitted to outside parties for use or examination.		DO NOT SCALE DRAWING FOR DIMENSIONS Sheet 5 of 5 SCALE 1: 14	
DRAWN BY AEK	CHECKED BY GES	APPROVED BY ENGINEERING DMS	MFG/MKTG RJR
MATERIAL N/A		POWEREX 150 PRODUCTION DRIVE, HARRISON, OHIO 45030 Ph: 888-769-7979 FAX: (513) 367-3125	
PART NAME TRIPLEX EXP DILLESS SCROLL 15HP 200GAL BASEMOUNT DUPLEX DESICCANT		DWG NO MST1505-EXP	SIZE D