

MINIMUM RECOMMENDED ELECTRICAL PANEL CLEARANCE PER OSHA/NEC REQUIREMENTS

MINIMUM RECOMMENDED MAINTENANCE CLEARANCE

2X DESICCANT DRYERS W/ DEW POINT MONITOR, CARBON MONOXIDE MONITOR, PRE-FILTER, AFTER-FILTER, & CARBON FILTER (OPTIONAL).

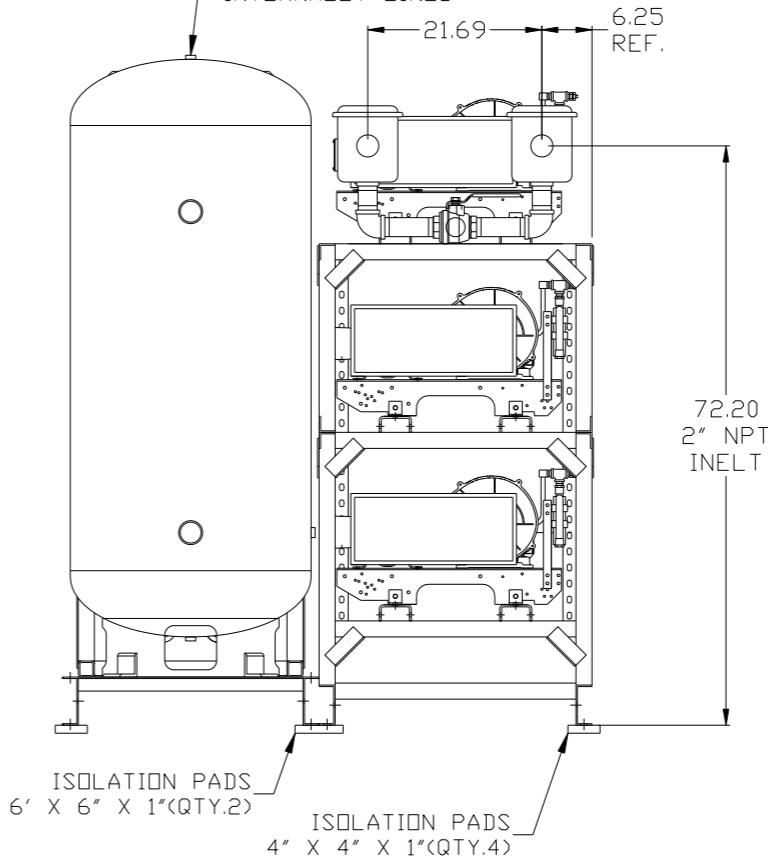
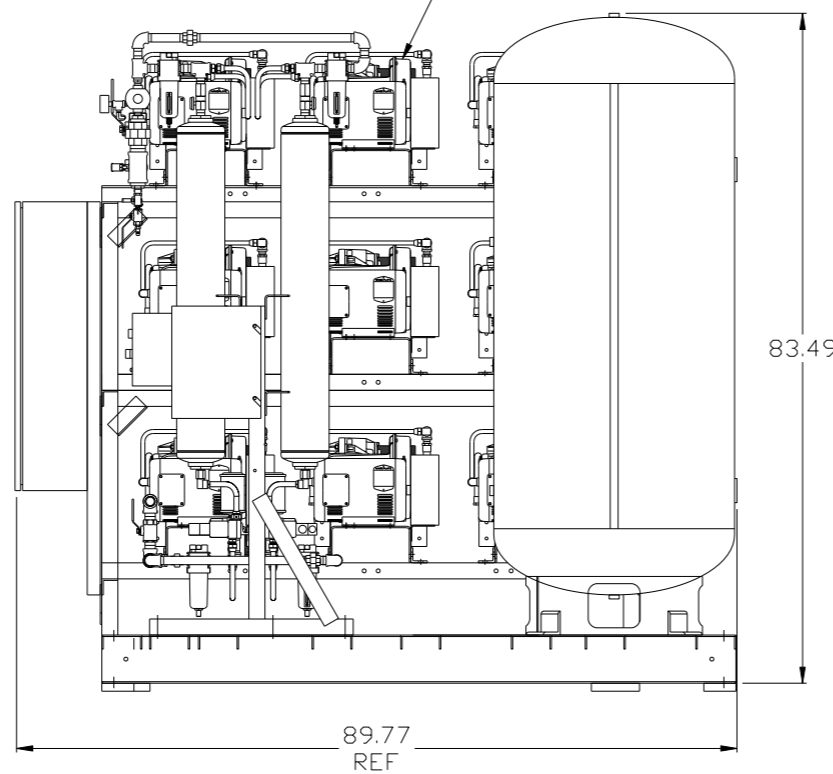
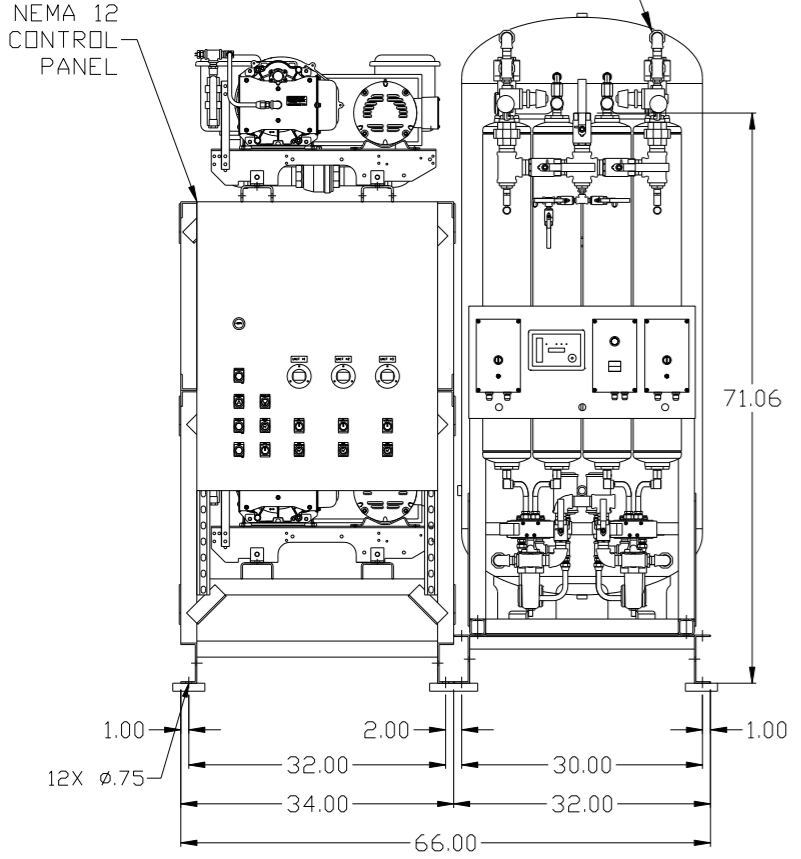
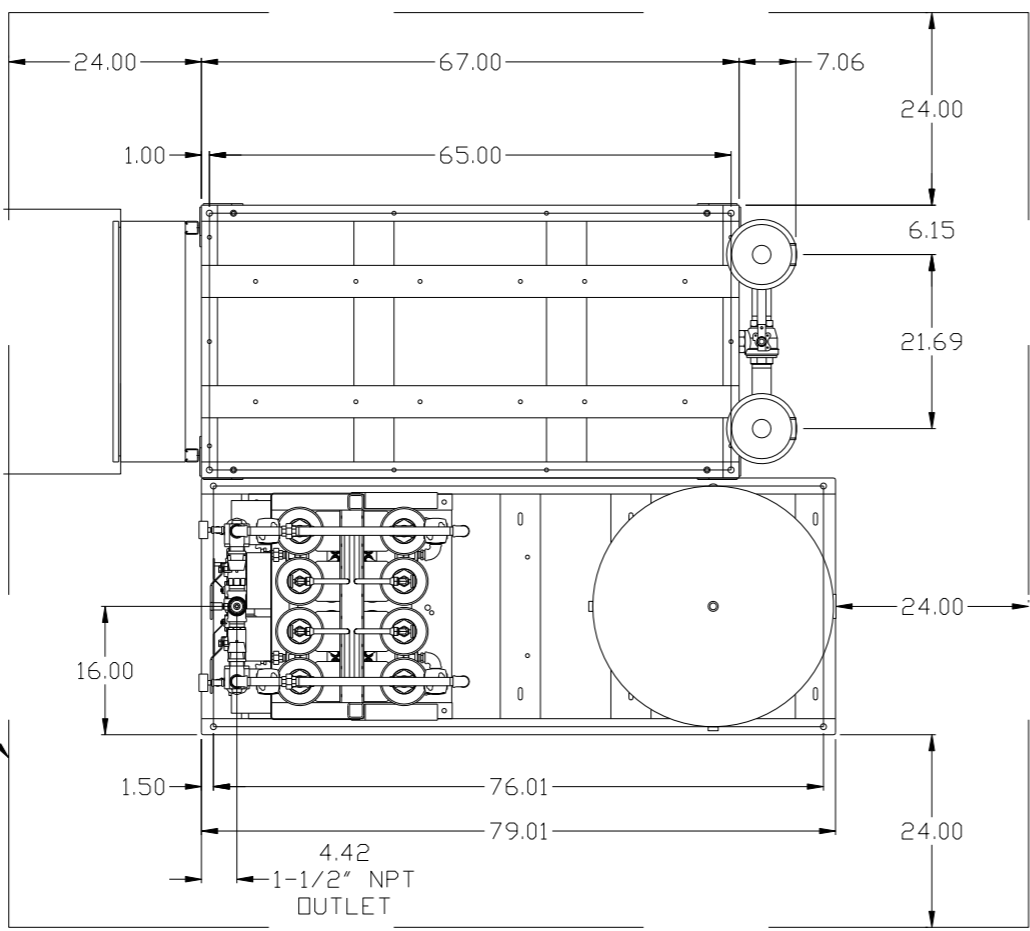
NEMA 12 CONTROL PANEL

9X 5HP SCROLL AIR END

200 GALLON ASME AIR RECEIVER INTERNALLY LINED

NOTE: SYSTEM DESIGNED IN COMPLIANCE WITH US NFPA'99, LATEST EDITION.

REV	ZONE	REVISION	DATE	ECN	NAME	CHKD
B-1	ALL	RELEASE TO PRODUCTION	08/16/06	21555	RSN	DMS
C-1	C-3	ADDED MANUAL DRAIN	03/23/07	21669	DMS	DMS
C-2	1 ALL	ADDED NEW STYLE PANEL & TANK; ADDED CTL FRAME, REPLACED AM0073 WITH AM0036	11/27/07	21669	AEK	GES
D-1	B-3	CHANGED DRYER FRAME TO AM0073	3/5/08	21907	GES	DMS
D-2	1 ALL	UPDATED PUMP TO E-SERIES	9/2/08	21907	AEK	DMS
E-1	ALL	UPDATED BUILD & FLOW TO CURRENT PRODUCTION	9/16/09	22127	AEK	GES
E-2	2 ALL	UPDATED PIPE SIZES	10/22/09	22127	AEK	GES
E-3	1 ALL	UPDATED TO POWEX DRYER	11/23/09	22120	AEK	GES
F-1	1 ALL	UPDATED MULTI-SCROLL FRAMES	11/2/10	22405	AEK	GES
G-1	ALL	ADDED SHEETS 3 & 4	12/17/10	22348	AEK	GES
H-1	ALL	ADDED PBM SHEETS	10/18/11	22609	AEK	GES
J-1	ALL	UPDATED PBM PANEL TO CORRECT ENCLOSURE SIZE	2/21/12	22723	AEK	GES
K-1	2 ALL	CORRECTED/ADDED FLEX LINES	8/20/12	PKEC0009	AEK	GES
L-1	5 ALL	ADDED SHEET 5, SHIP VIEW.	8/28/12	22723	GES	DMS
M-1	2 R9-R5	ADDED UNIONS	2/20/13	PKEC0030	AEK	GES
N-1	2 A7-D7	CORRECTED INLET PLUMBING SIZE	4/17/13	PKEC0030	AEK	GES
N-2	2 A7-D7	CORRECTED INLET PLUMBING PER BUILD	9/10/13	PKEC0030	GES	DMS
P-1	ALL	UPDATED DRYER OUTLET ORIENTATION	4/1/15	PKEC0100	AEK	GES



SYMBOL LEGEND
 ⊖ = MINUS DRAFT
 ⊕ = PLUS DRAFT
 ⊕ = ADDITIONAL CONTROL REQ'D
 ⊕ = BRINELL HARDNESS

Drawings to conform to the current revision of the following ANSI standards:
 Y14.3 Multi and sectional view dgs.
 Y14.5M Dimensioning and tolerancing

TOLERANCES NOT SPECIFIED:
 .XX ±
 .XXX ±
 \angle (DEG) ±

AUTOCAD REL2000:
 INCH

DO NOT SCALE DRAWING FOR DIMENSIONS
 Sheet 1 of 5
 SCALE 1:12

CONFIDENTIAL DISCLOSURE
 This drawing is the property of POWEX, INC. of the SCOTT FELTZER COMPANY and subject to return on demand. Its contents are confidential and must not be copied or submitted to outside parties for use or examination.

DRAWN BY: RSN
 CHECKED BY: DMS
 APPROVED BY: ENGINEERING MFG/MKTG: DMS, JJ
 06/12/06 7/07/06 7/07/06 7/07/06

MATERIAL: N/A

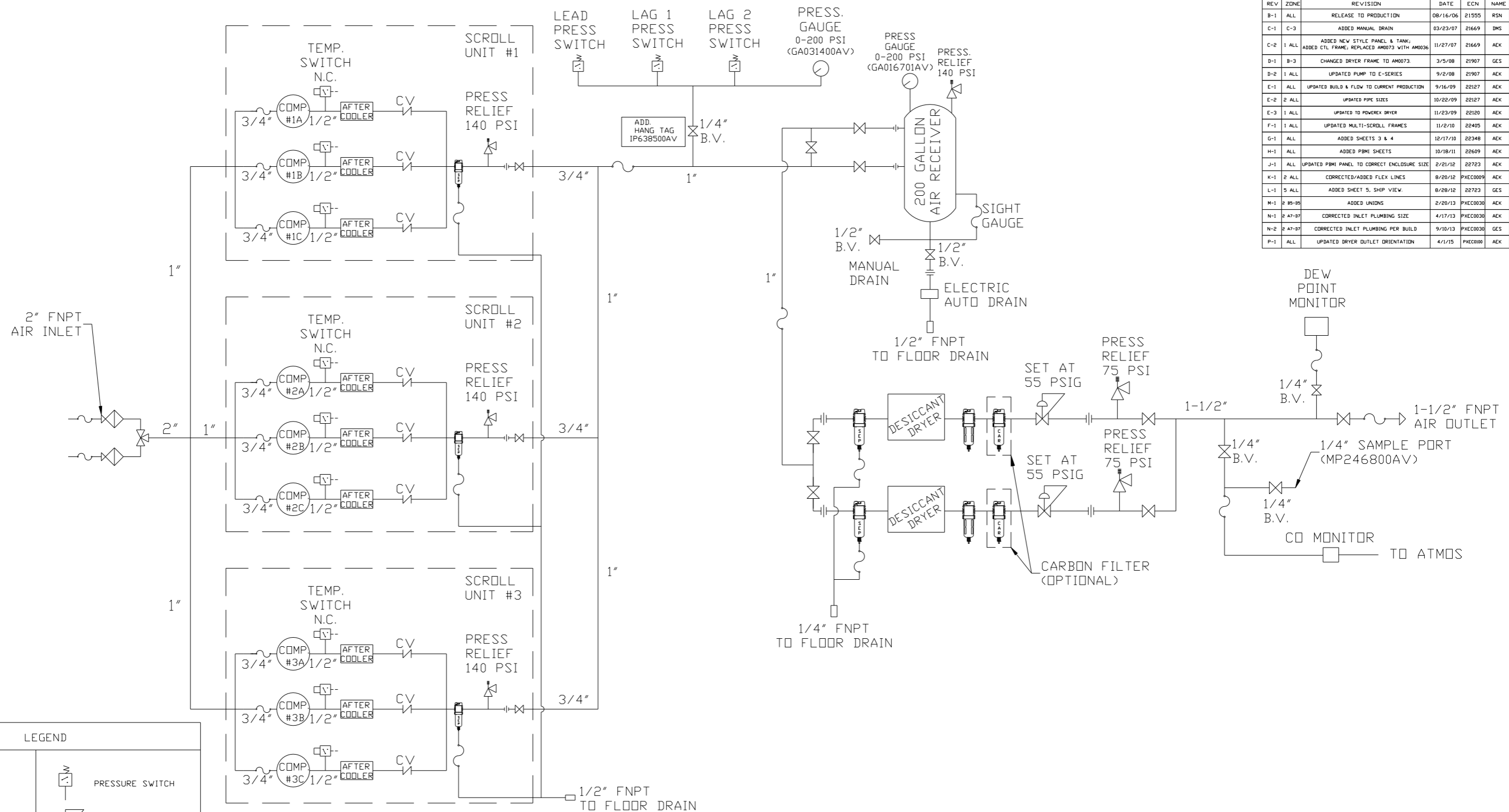
PART NAME: TRIPLEX DILLESS SCROLL 15HP, 200GAL. BASEMOUNT DUPLEX DESICCANT

DWG NO: MST1505
 SIZE: D

150 PRODUCTION DRIVE, HARRISON, OHIO 45030
 Ph: 888-769-7979 FAX: (513) 367-3125

nst1505.dwg

REV	ZONE	REVISION	DATE	ECN	NAME	CHKD
B-1	ALL	RELEASE TO PRODUCTION	08/16/06	21555	RSN	DMS
C-1	C-3	ADDED MANUAL DRAIN	03/23/07	21669	DMS	DMS
C-2	1 ALL	ADDED NEW STYLE PANEL & TANK; ADDED CTL FRAME, REPLACED AM073 WITH AM036	11/27/07	21669	AEK	GES
D-1	B-3	CHANGED DRYER FRAME TO AM0073	3/5/08	21907	GES	DMS
D-2	1 ALL	UPDATED PUMP TO E-SERIES	9/2/08	21907	AEK	DMS
E-1	ALL	UPDATED BUILD & FLOW TO CURRENT PRODUCTION	9/16/09	22127	AEK	GES
E-2	2 ALL	UPDATED PIPE SIZES	10/22/09	22127	AEK	GES
E-3	1 ALL	UPDATED TO POWEREX DRYER	11/23/09	22120	AEK	GES
F-1	1 ALL	UPDATED MULTI-SCROLL FRAMES	11/2/10	22405	AEK	GES
G-1	ALL	ADDED SHEETS 3 & 4	12/17/10	22348	AEK	GES
H-1	ALL	ADDED PBMI SHEETS	10/18/11	22609	AEK	GES
J-1	ALL	UPDATED PBMI PANEL TO CORRECT ENCLOSURE SIZE	2/21/12	22723	AEK	GES
K-1	2 ALL	CORRECTED/ADDED FLEX LINES	8/20/12	PXEC0009	AEK	GES
L-1	5 ALL	ADDED SHEET 5, SHIP VIEW.	8/28/12	22723	GES	DMS
M-1	2 B9-B5	ADDED UNIONS	2/20/13	PXEC0030	AEK	GES
N-1	2 A7-D7	CORRECTED INLET PLUMBING SIZE	4/17/13	PXEC0030	AEK	GES
N-2	2 A7-D7	CORRECTED INLET PLUMBING PER BUILD	9/10/13	PXEC0030	GES	DMS
P-1	ALL	UPDATED DRYER OUTLET ORIENTATION	4/1/15	PXEC0100	AEK	GES

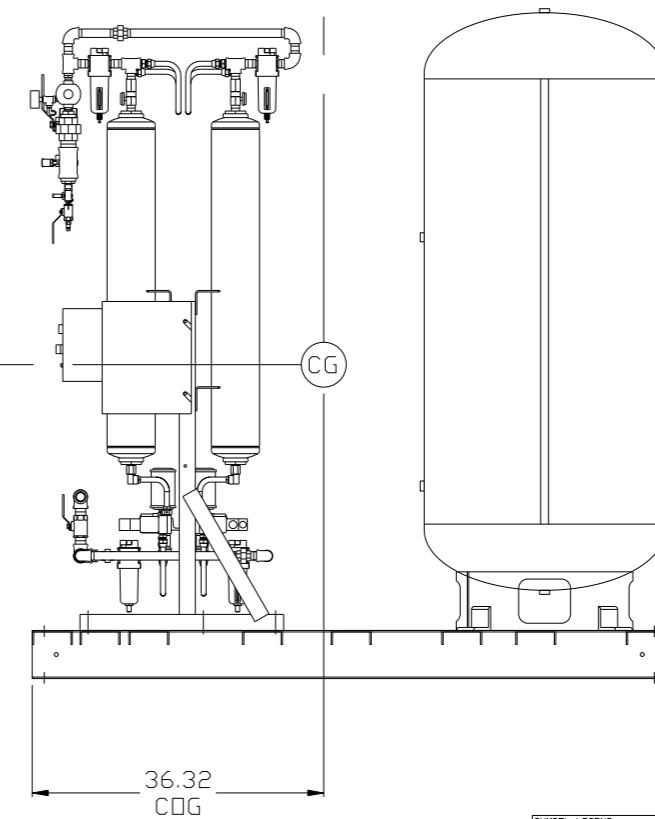
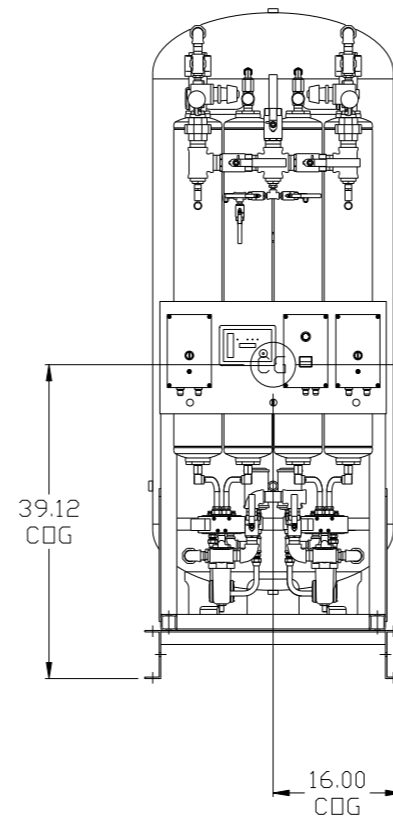
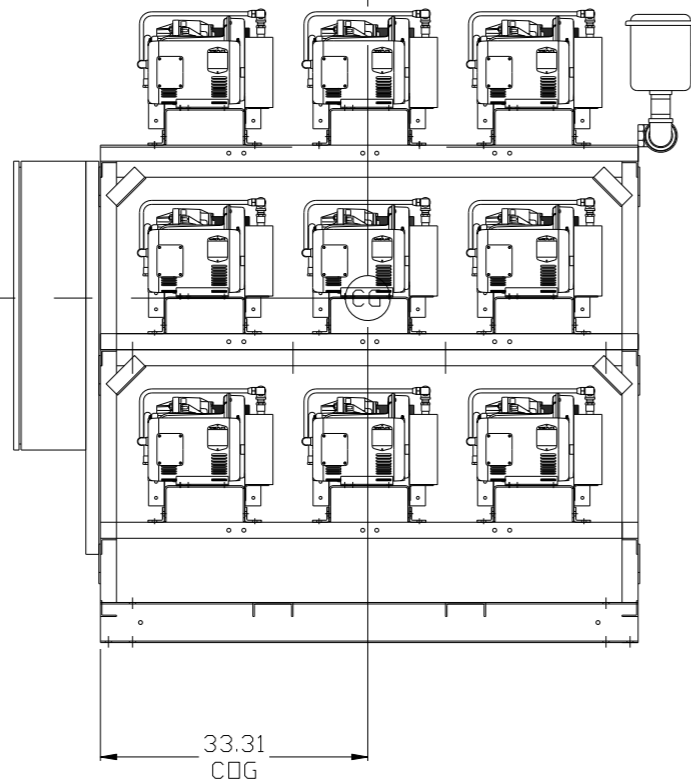
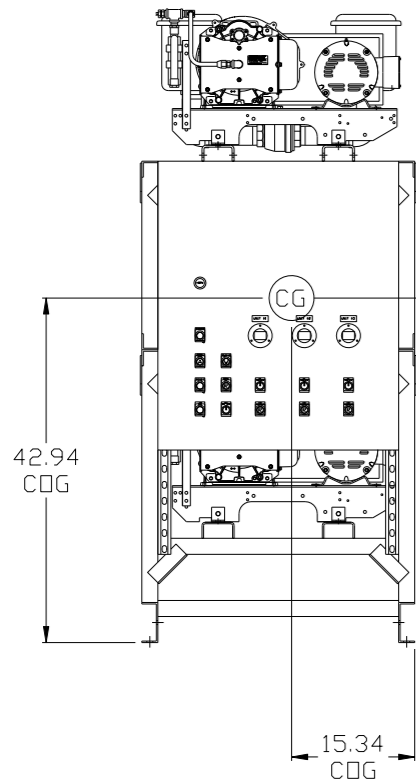
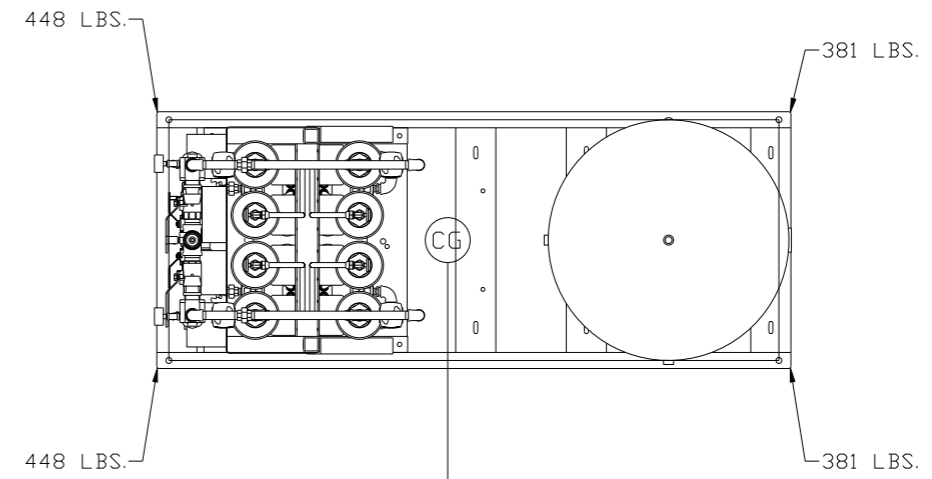
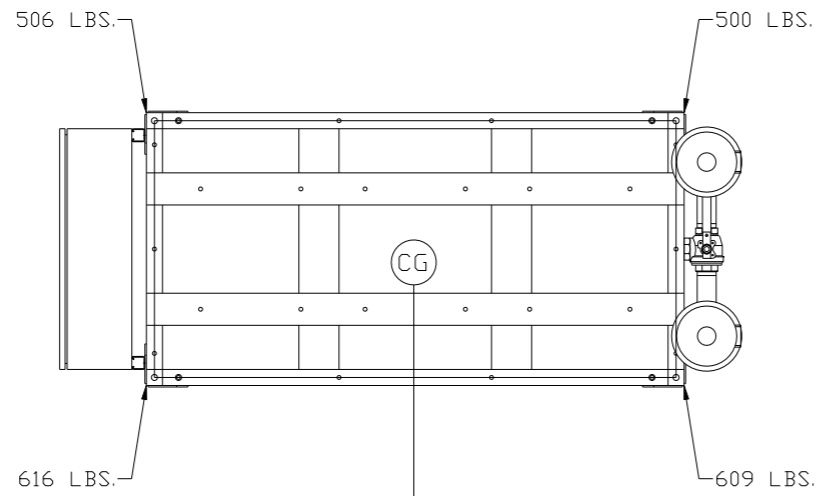


LEGEND	
	RELIEF VALVE
	INTAKE FILTER
	AIR FILTER
	3 WAY VALVE
	CARBON FILTER
	BALL VALVE
	PRESSURE SWITCH
	REGULATOR
	SEPARATOR
	CHECK VALVE
	FLEX LINE
	HIGH TEMP SWITCH
	UNION

NOTES:
 1) IF RESERVE COMPRESSOR IS ENERGIZED ALARM WILL OCCUR.
 2) PIPING TO THE INLET BY OTHERS AND TO BE PER NFPA99 4-3.1.1.9(b)
 3) INSTRUMENTS DOWN STREAM OF SOURCE VALVE TO BE SUPPLIED BY OTHERS.

SYMBOL LEGEND			ADDITIONAL CONTROL REQ'D	Drawings to conform to the current revision of the following ANSI standards:	
	MINUS DRAFT		BRINELL HARDNESS	Y14.3 Multi and sectional view dsgs. Y14.5M Dimensioning and tolerancing	
TOLERANCES NOT SPECIFIED		AUTOCAD REL2000:		DO NOT SCALE DRAWING FOR DIMENSIONS	
.XX ±		INCH		Sheet 2 of 5	SCALE 1:12
CONFIDENTIAL DISCLOSURE This drawing is the property of POWEREX, INC. or the SCOTT FEITZER COMPANY and subject to return on demand. Its contents are confidential and must not be copied or submitted to outside parties for use or examination.					
DRAWN BY		CHECKED BY	APPROVED BY	MFG/MKTG	
RSN		DMS	DMS	JJ	
06/14/06		7/07/06	7/07/06	7/07/06	
MATERIAL N/A					
PART NAME				SIZE	
MEDICAL SCROLL TRIPLEX PACKAGE FLOW SCHEMATIC				MST1505 D	

REV	ZONE	REVISION	DATE	ECN	NAME	CHKD
G-1	ALL	ADDED SHEETS 3 & 4	12/17/10	22348	AEK	GES
H-1	ALL	ADDED PBM SHEETS	10/18/11	22609	AEK	GES
J-1	ALL	UPDATED PBM PANEL TO CORRECT ENCLOSURE SIZE	2/21/12	22723	AEK	GES
K-1	2 ALL	CORRECTED/ADDED FLEX LINES	8/20/12	PXEC0009	AEK	GES
L-1	5 ALL	ADDED SHEET 5, SHIP VIEW	8/28/12	22723	GES	DMS
M-1	2 85-05	ADDED UNIONS	2/20/13	PXEC0030	AEK	GES
N-1	2 A7-D7	CORRECTED INLET PLUMBING SIZE	4/17/13	PXEC0030	AEK	GES
N-2	2 A7-D7	CORRECTED INLET PLUMBING PER BUILD	9/10/13	PXEC0030	GES	DMS
P-1	ALL	UPDATED DRYER OUTLET ORIENTATION	4/1/15	PXEC0088	AEK	GES



PUMP SKID:
TOTAL WEIGHT: 2231 LBS
C.O.G. DIMENSIONS
X (FRONT): -15.34"
Y (RIGHT): 33.31"
Z (HEIGHT): 42.93"

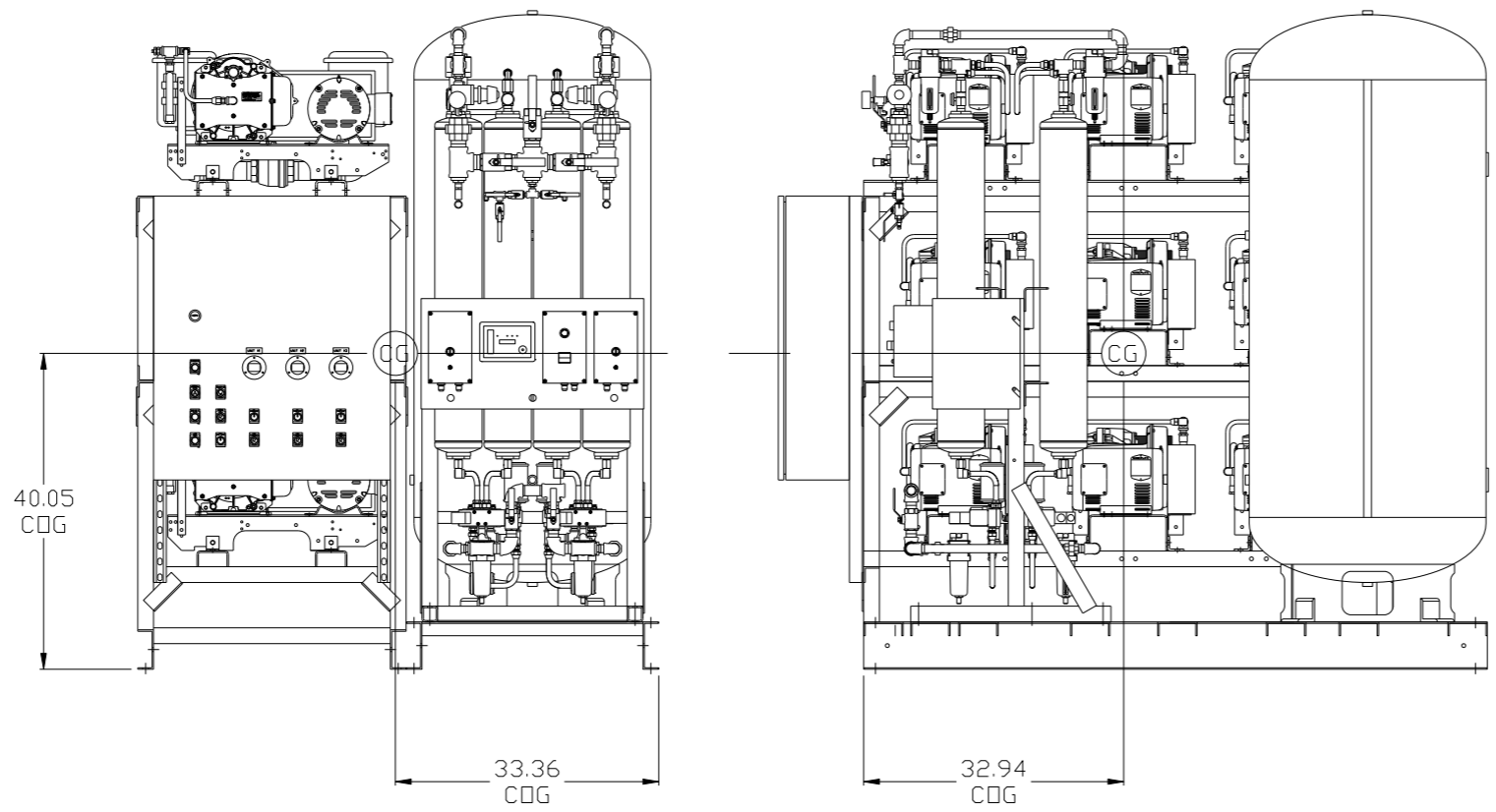
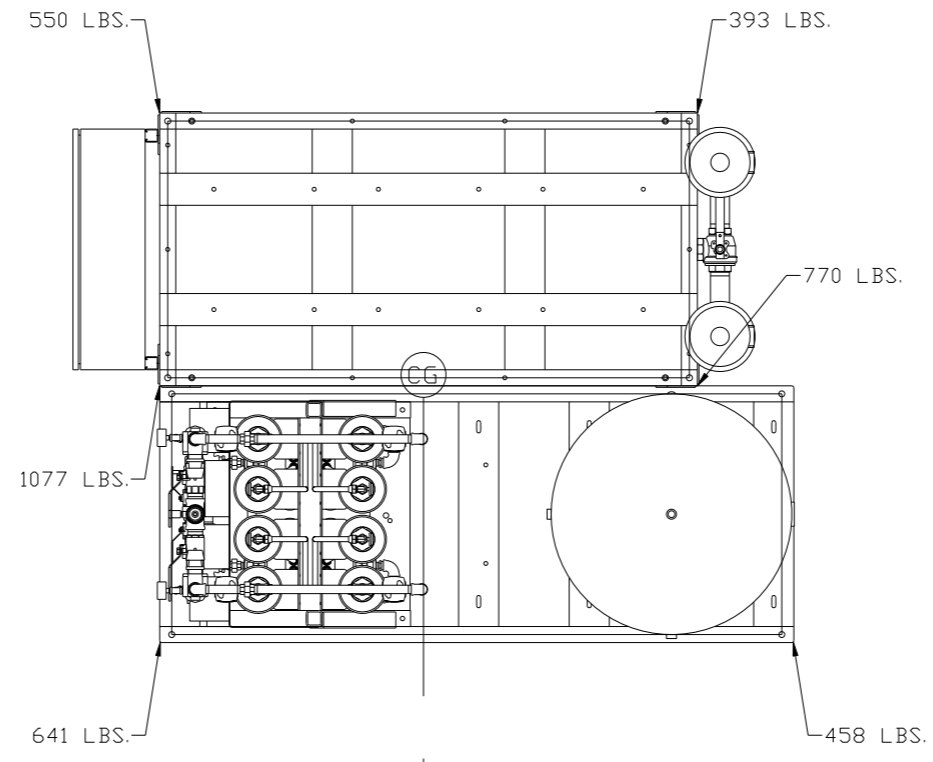
ATC SKID:
TOTAL WEIGHT: 1658 LBS
C.O.G. DIMENSIONS
X (FRONT): -16"
Y (RIGHT): -36.321"
Z (HEIGHT): 39.12"

(CG) denotes center of gravity

SYMBOL LEGEND ⊖ = MINUS DRAFT ⊕ = PLUS DRAFT ⊕ = ADDITIONAL CONTROL REQ'D HRC = BRINELL HARDNESS		Drawings to conform to the current revision of the following ANSI standards: Y14.3 Multi and sectional view dgs. Y14.5M Dimensioning and tolerancing	
TOLERANCES NOT SPECIFIED .XX ± .XXX ± \angle(DEG.) ±		DO NOT SCALE DRAWING FOR DIMENSIONS SCALE: 1:12	
CONFIDENTIAL DISCLOSURE This drawing is the property of POWEREX, INC. or the SCOTT FETZER COMPANY and subject to return on demand. Its contents are confidential and must not be copied or submitted to outside parties for use or examination.		AUTOCAD REL2000 LT Sheet 3 of 5	
MATERIAL: N/A		DRAWN BY: AEK CHECKED BY: GES APPROVED BY: ENGINEERING MFG/MKTG: DMS, JJ	
PART NAME: TRIPLEX DILLESS SCROLL 15HP, 200GAL. BASEMOUNT DUPLEX DESICCANT		DATE: 12/17/10 DATE: 12/17/10 DATE: 12/17/10 DATE: 12/17/10	
DWG NO: MST1505		SIZE: D	



REV	ZONE	REVISION	DATE	ECN	NAME	CHKD
G-1	ALL	ADDED SHEETS 3 & 4	12/17/10	22348	AEK	GES
H-1	ALL	ADDED PBM SHEETS	10/18/11	22609	AEK	GES
J-1	ALL	UPDATED PBM PANEL TO CORRECT ENCLOSURE SIZE	2/21/12	22723	AEK	GES
K-1	2 ALL	CORRECTED/ADDED FLEX LINES	8/20/12	PXEC0009	AEK	GES
L-1	5 ALL	ADDED SHEET 5, SHIP VIEW	8/28/12	22723	GES	DMS
M-1	2 85-DS	ADDED UNIONS	2/20/13	PXEC0030	AEK	GES
N-1	2 A7-D7	CORRECTED INLET PLUMBING SIZE	4/17/13	PXEC0030	AEK	GES
N-2	2 A7-D7	CORRECTED INLET PLUMBING PER BUILD	9/10/13	PXEC0030	GES	DMS
P-1	ALL	UPDATED DRYER OUTLET ORIENTATION	4/1/15	PXEC0088	AEK	GES

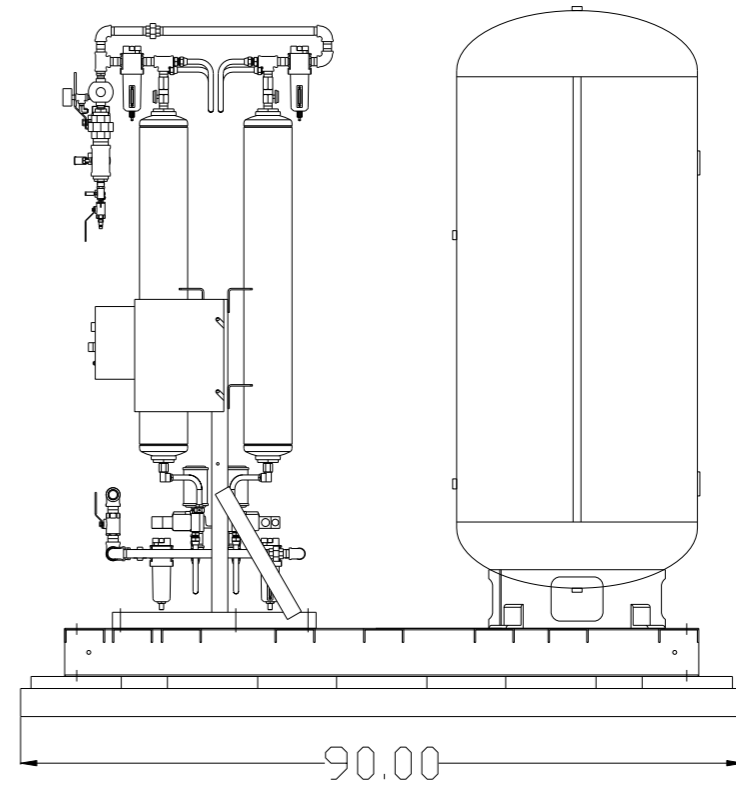
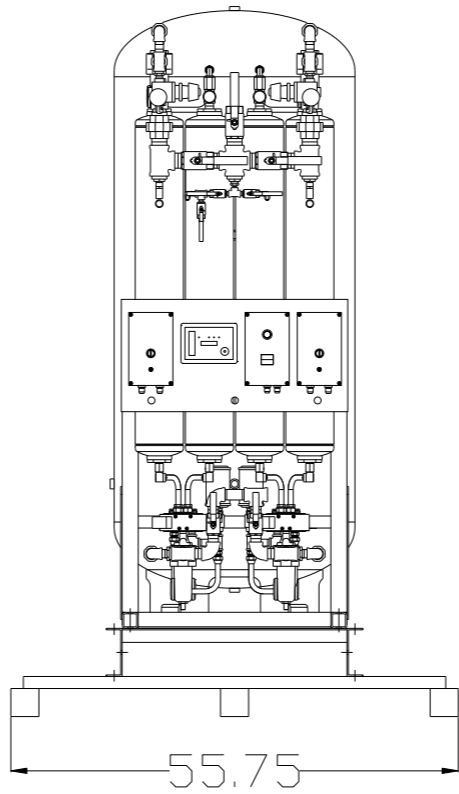
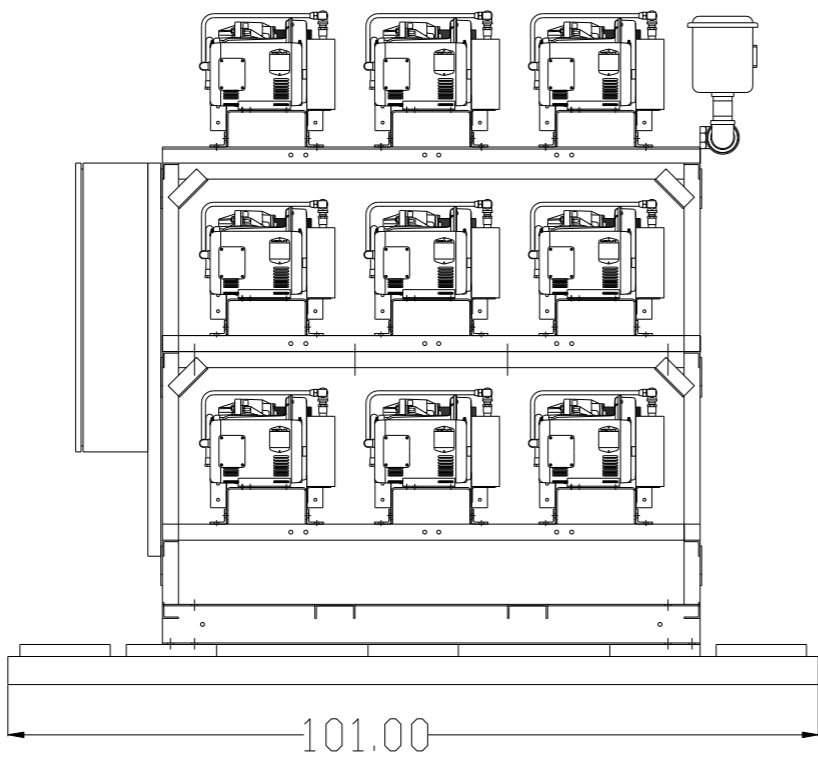
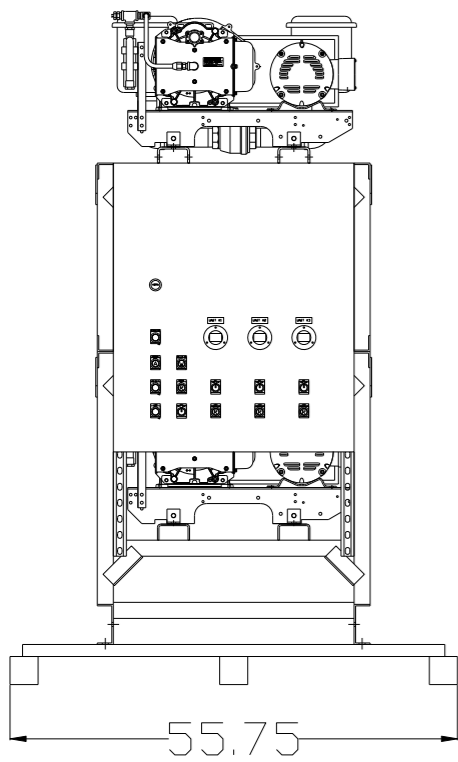
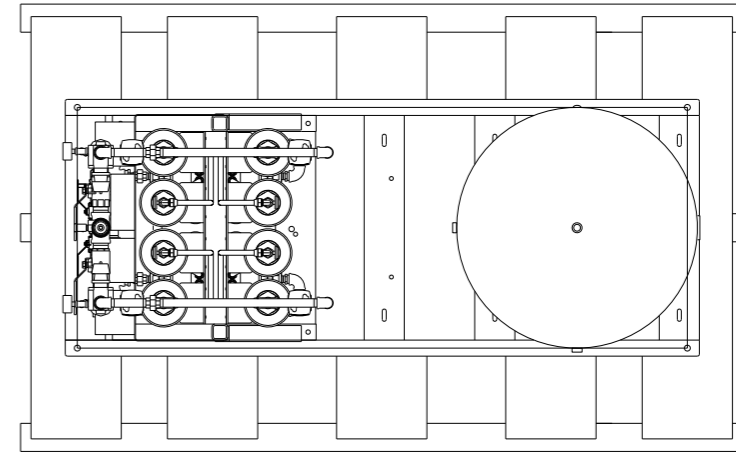
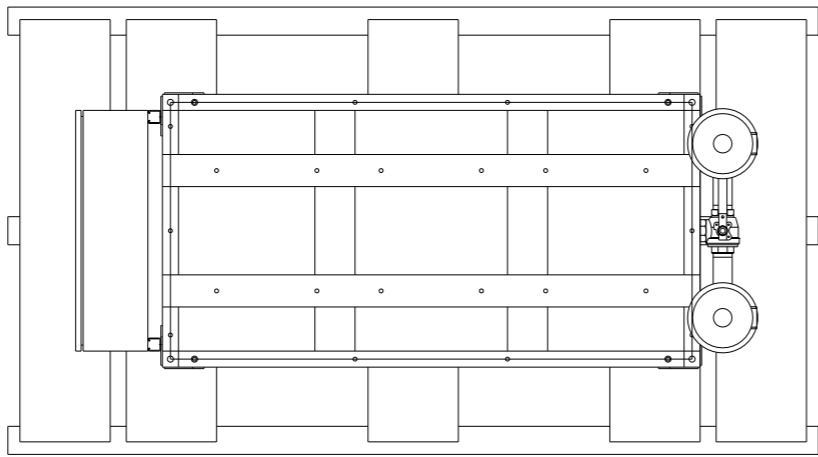


SYSTEM:
TOTAL WEIGHT: 3889 LBS
C.O.G. DIMENSIONS
X (FRONT): -33.36"
Y (RIGHT): 32.94"
Z (HEIGHT): 40.05"

(CG) denotes center of gravity

SYMBOL LEGEND ⊖ = MINUS DRAFT ⊕ = PLUS DRAFT ⊕ = ADDITIONAL CONTROL REQ'D ⊕ = BRINELL HARDNESS		Drawings to conform to the current revision of the following ANSI standards: Y14.3 Multi and sectional view dgs. Y14.5M Dimensioning and tolerancing	
TOLERANCES NOT SPECIFIED .XX ± .XXX ± <<DEG> ±		DO NOT SCALE DRAWING FOR DIMENSIONS SCALE 1:12 Sheet 4 of 5	
CONFIDENTIAL DISCLOSURE This drawing is the property of POWEREX, INC. or the SCOTT FELTZER COMPANY and subject to return on demand. Its contents are confidential and must not be copied or submitted to outside parties for use or examination.		CONFIDENTIAL DISCLOSURE This drawing is the property of POWEREX, INC. or the SCOTT FELTZER COMPANY and subject to return on demand. Its contents are confidential and must not be copied or submitted to outside parties for use or examination.	
MATERIAL N/A		POWEREX 150 PRODUCTION DRIVE, HARRISON, OHIO 45030 Ph: 888-769-7979 FAX: (513) 367-3125	
PART NAME TRIPLEX DILLESS SCROLL 15HP, 200GAL. BASEMOUNT DUPLEX DESICCANT		MST1505 SIZE D	

REV	ZONE	REVISION	DATE	ECN	NAME	CHKD
L-1	4ALL	ADDED SHEET 5, SHIP VIEW.	8/28/12	22723	GES	DMS
M-1	2 85-25	ADDED UNIONS	2/20/13	PKEC0030	AEK	GES
N-1	2 A7-D7	CORRECTED INLET PLUMBING SIZE	4/17/13	PKEC0030	AEK	GES
N-2	2 A7-D7	CORRECTED INLET PLUMBING PER BUILD	9/10/13	PKEC0030	GES	DMS
P-1	ALL	UPDATED DRYER OUTLET ORIENTATION	4/1/15	PKEC0088	AEK	GES



SYMBOL LEGEND

⊖ = MINUS DRAFT ⊕ = PLUS DRAFT ⊕ = ADDITIONAL CONTROL REQ'D ⊕ = BRINELL HARDNESS

TOLERANCES NOT SPECIFIED: .XX ±, .XXX ±, \angle (DEG) ±

AUTOCAD REL2000 LT

DO NOT SCALE DRAWING FOR DIMENSIONS

SCALE: 1:12

Sheet 5 of 5

CONFIDENTIAL DISCLOSURE
This drawing is the property of POWEREX, INC. of the SCOTT FELTZER COMPANY and subject to return on demand. Its contents are confidential and must not be copied or submitted to outside parties for use or examination.

DRAWN BY	CHECKED BY	APPROVED BY	DATE
GES	DMS	GES	DFG
8/28/12	8/28/12	8/28/12	8/28/12

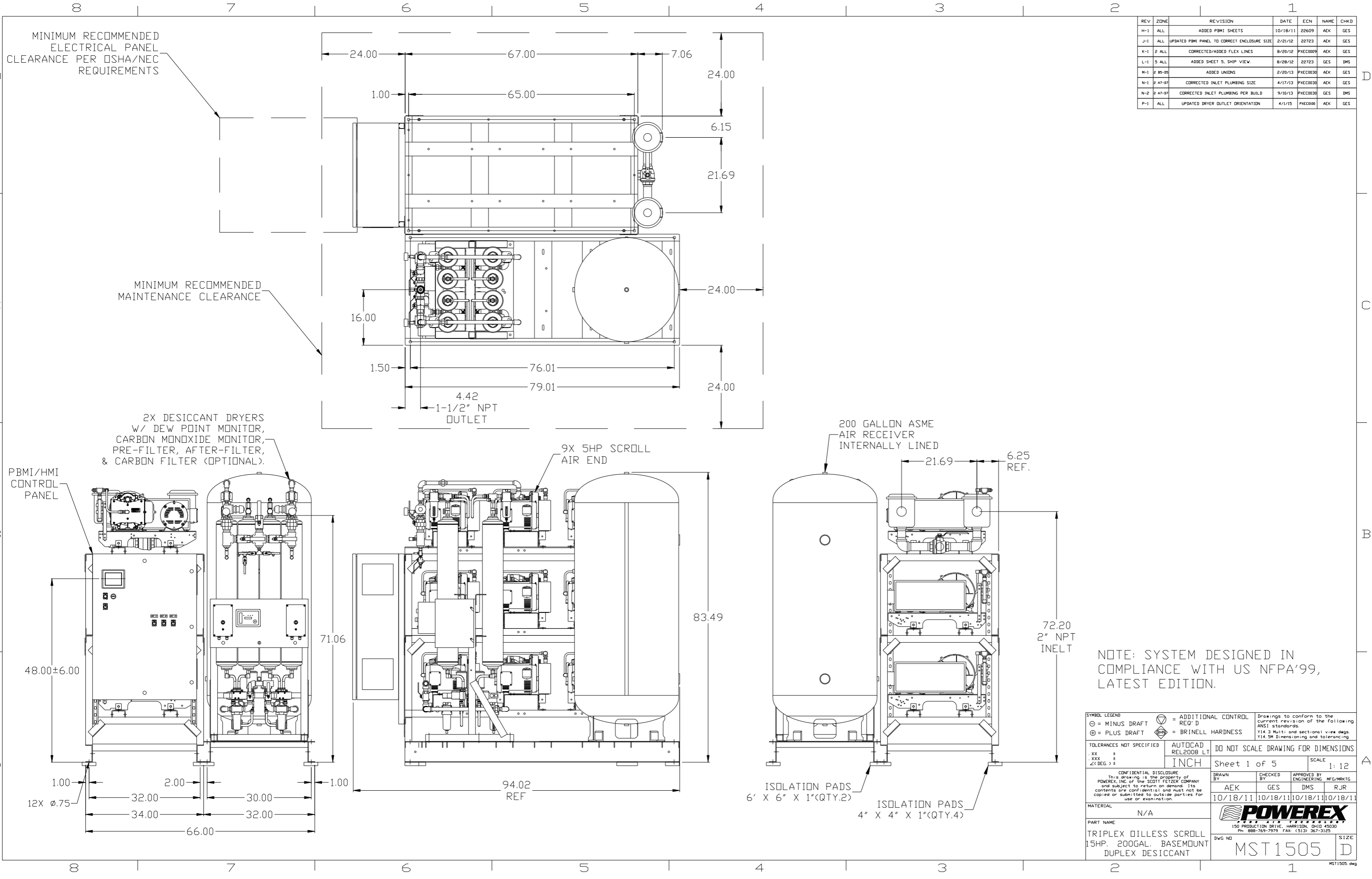
MATERIAL: N/A

PART NAME: TRIPLEX DILLESS SCROLL 15HP, 200GAL. BASEMOUNT DUPLEX DESICCANT

DWG NO: MST1505

SIZE: D

POWEREX
150 PRODUCTION DRIVE, HARRISON, OHIO 45030
Ph: 888-769-7979 FAX: (513) 367-3125



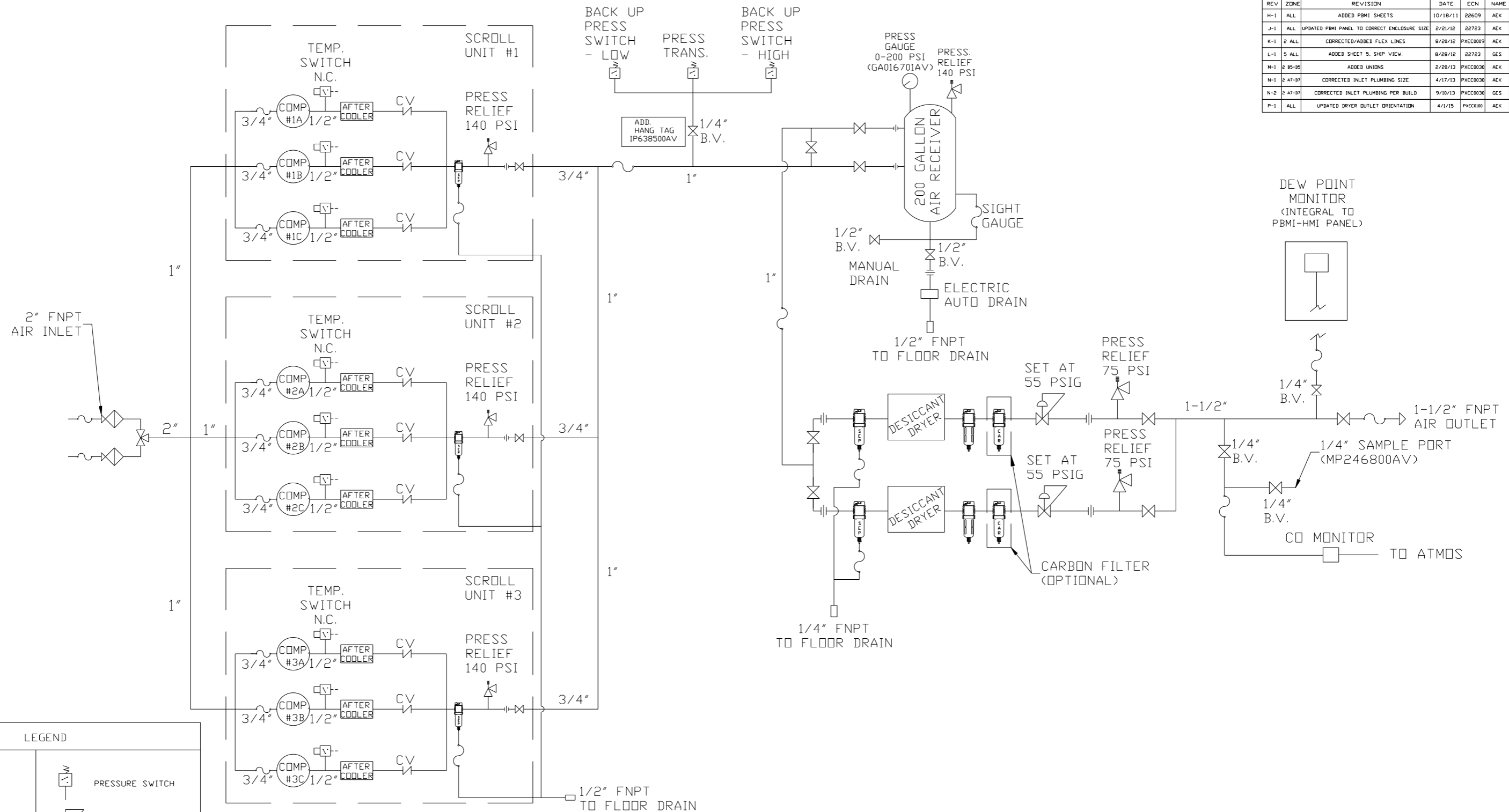
REV	ZONE	REVISION	DATE	ECN	NAME	CHKD
H-1	ALL	ADDED PBMI SHEETS	10/18/11	22609	AEK	GES
J-1	ALL	UPDATED PBMI PANEL TO CORRECT ENCLOSURE SIZE	2/21/12	22723	AEK	GES
K-1	2 ALL	CORRECTED/ADDED FLEX LINES	8/20/12	PXEC0099	AEK	GES
L-1	5 ALL	ADDED SHEET 5, SHIP VIEW.	8/28/12	22723	GES	DMS
M-1	2 BS-BS	ADDED UNIONS	2/20/13	PXEC0030	AEK	GES
N-1	2 A7-D7	CORRECTED INLET PLUMBING SIZE	4/17/13	PXEC0030	AEK	DMS
N-2	2 A7-D7	CORRECTED INLET PLUMBING PER BUILD	9/10/13	PXEC0030	AEK	DMS
P-1	ALL	UPDATED DRYER OUTLET ORIENTATION	4/1/15	PXEC0100	AEK	GES

NOTE: SYSTEM DESIGNED IN COMPLIANCE WITH US NFPA '99, LATEST EDITION.

SYMBOL LEGEND ⊖ = MINUS DRAFT ⊕ = PLUS DRAFT ⊕ = BRINELL HARDNESS		= ADDITIONAL CONTROL REQ'D = BRINELL HARDNESS		Drawings to conform to the current revision of the following ANSI standards: Y14.3 Multi and sectional view dgs. Y14.5M Dimensioning and tolerancing
TOLERANCES NOT SPECIFIED .XX ± .XXX ± <DEG> ±		AUTOCAD REL2008 LT INCH		DO NOT SCALE DRAWING FOR DIMENSIONS Sheet 1 of 5 SCALE 1:12
CONFIDENTIAL DISCLOSURE This drawing is the property of POWEREX, INC. of the SCOTT FELTZER COMPANY and subject to return on demand. Its contents are confidential and must not be copied or submitted to outside parties for use or examination.		DRAWN BY AEK	CHECKED BY GES	APPROVED BY ENGINEERING MFG/MKTG DMS RJR
MATERIAL N/A		10/18/11	10/18/11	10/18/11 10/18/11
PART NAME TRIPLEX DILLESS SCROLL 15HP, 200GAL. BASEMOUNT DUPLEX DESICCANT		DWG NO MST1505		SIZE D

8 7 6 5 4 3 2 1

REV	ZONE	REVISION	DATE	ECN	NAME	CHKD
H-1	ALL	ADDED PBMI SHEETS	10/18/11	22609	AEK	GES
J-1	ALL	UPDATED PBMI PANEL TO CORRECT ENCLOSURE SIZE	2/21/12	22723	AEK	GES
K-1	2 ALL	CORRECTED/ADDED FLEX LINES	8/20/12	PXEC0099	AEK	GES
L-1	5 ALL	ADDED SHEET 5, SHIP VIEW.	8/28/12	22723	GES	DMS
M-1	2 BS-BS	ADDED UNIONS	2/20/13	PXEC0030	AEK	GES
N-1	2 A7-D7	CORRECTED INLET PLUMBING SIZE	4/17/13	PXEC0030	AEK	GES
N-2	2 A7-D7	CORRECTED INLET PLUMBING PER BUILD	9/10/13	PXEC0030	GES	DMS
P-1	ALL	UPDATED DRYER OUTLET ORIENTATION	4/1/15	PXEC0100	AEK	GES

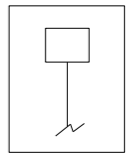


2" FNPT AIR INLET

BACK UP PRESS SWITCH - LOW
PRESS TRANS.
BACK UP PRESS SWITCH - HIGH

PRESS GAUGE 0-200 PSI (GA016701AV)
PRESS. RELIEF 140 PSI

DEW POINT MONITOR (INTEGRAL TO PBMI-HMI PANEL)



1/4" B.V.

1/4" SAMPLE PORT (MP246800AV)

CO MONITOR TO ATMOS

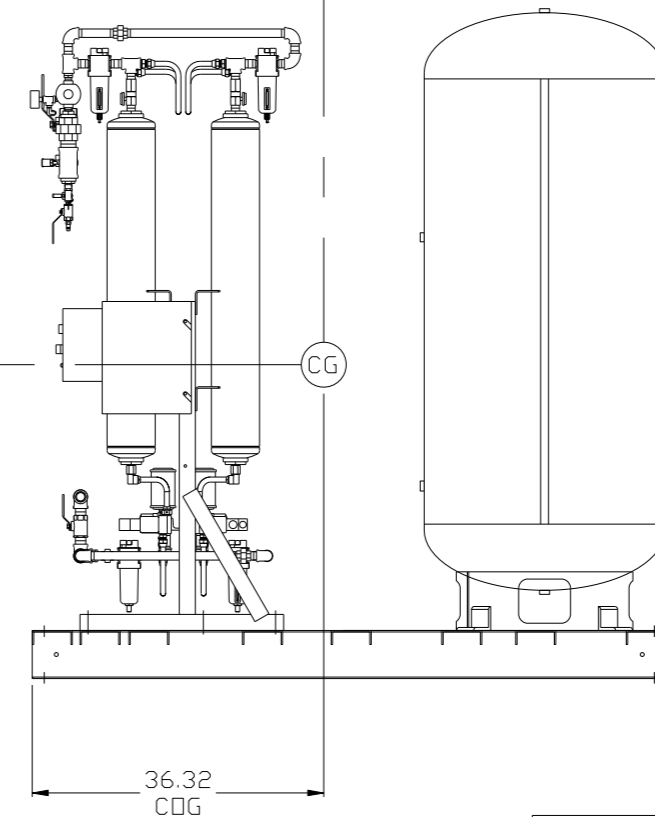
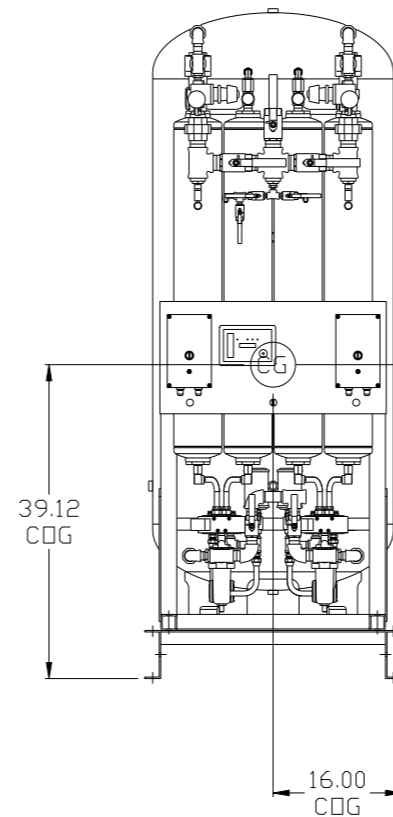
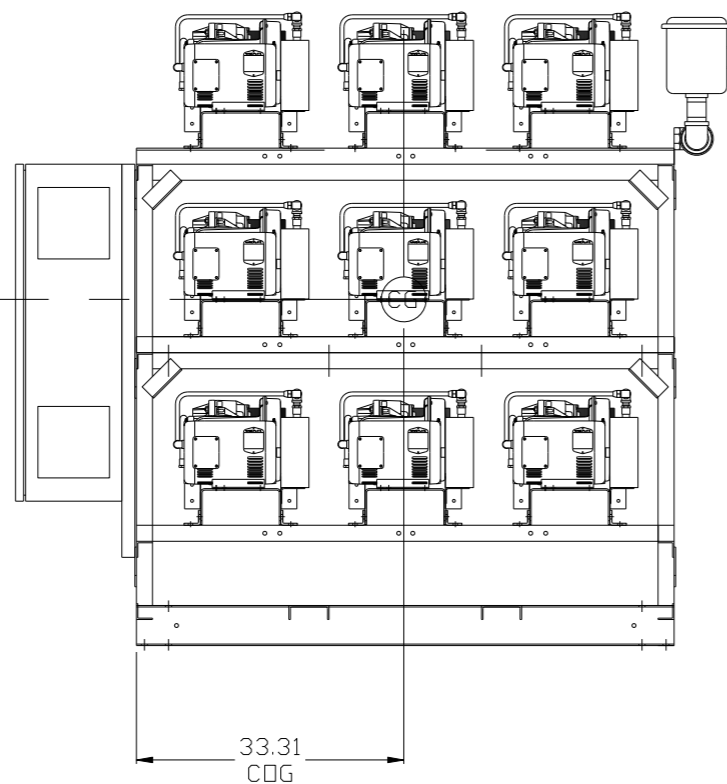
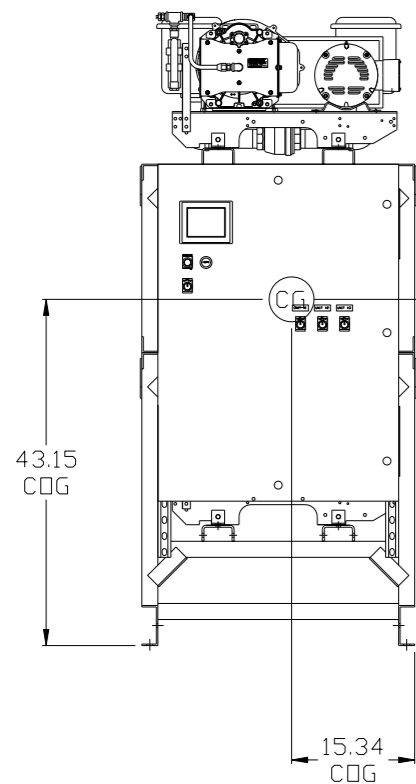
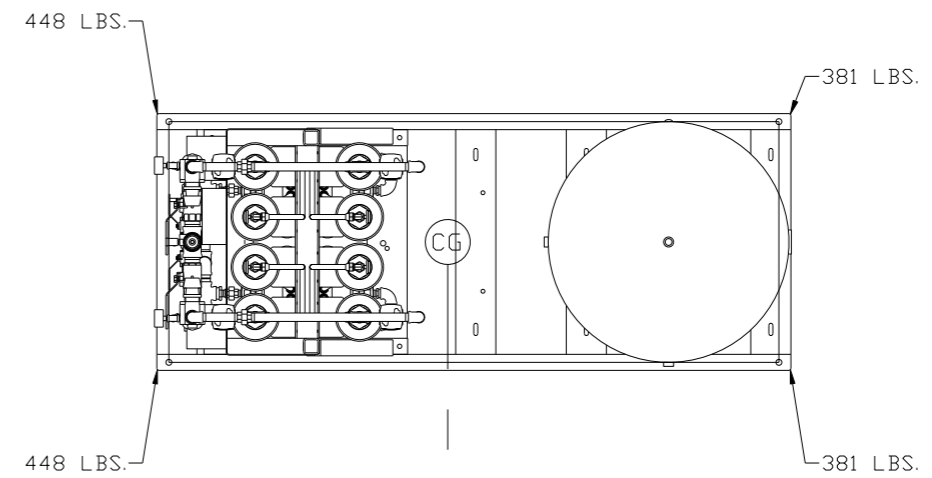
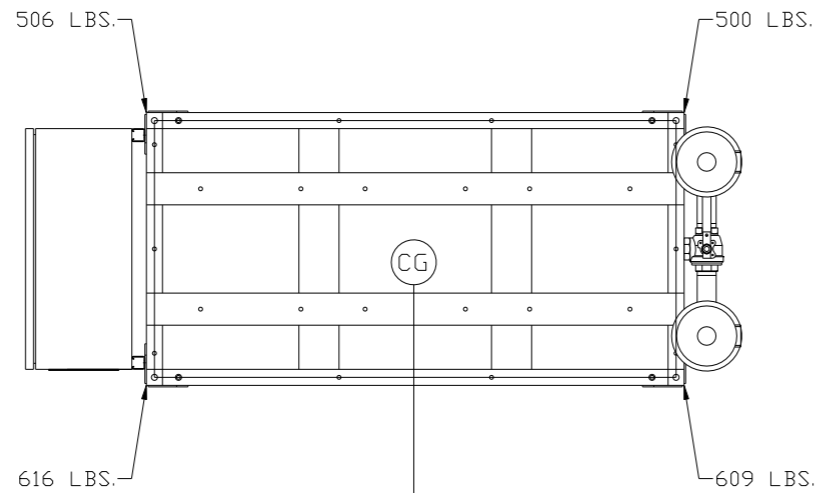
LEGEND	
	RELIEF VALVE
	INTAKE FILTER
	AIR FILTER
	3 WAY VALVE
	CARBON FILTER
	BALL VALVE
	PRESSURE SWITCH
	REGULATOR
	SEPARATOR
	CHECK VALVE
	FLEX LINE
	HIGH TEMP SWITCH
	UNION

- NOTES:
- 1) IF RESERVE COMPRESSOR IS ENERGIZED ALARM WILL OCCUR.
 - 2) PIPING TO THE INLET BY OTHERS AND TO BE PER NFPA99 4-3.1.1.9(b)
 - 3) INSTRUMENTS DOWN STREAM OF SOURCE VALVE TO BE SUPPLIED BY OTHERS.

SYMBOL LEGEND		⊖ = MINUS DRAFT	⊕ = PLUS DRAFT	⊕ = ADDITIONAL CONTROL REQ'D	⊕ = BRINELL HARDNESS	Drawings to conform to the current revision of the following ANSI standards: Y14.3 Multi and sectional view dsgs. Y14.5M Dimensioning and tolerancing	
TOLERANCES NOT SPECIFIED	AUTOCAD REL2008 LT	.XX ±	.XXX ±	<Z< DEG. ±	INCH	DO NOT SCALE DRAWING FOR DIMENSIONS	
CONFIDENTIAL DISCLOSURE This drawing is the property of POWEREX, INC. or the SCOTT FELTZER COMPANY and subject to return on demand. Its contents are confidential and must not be copied or submitted to outside parties for use or examination.		DRAWN BY AEK	CHECKED BY GES	APPROVED BY DMS	ENGINEERING RJR	MFG/MKTG	Sheet 2 of 5 SCALE 1:12
MATERIAL N/A		10/18/11		10/18/11		10/18/11	
PART NAME MEDICAL SCROLL TRIPLEX PACKAGE FLOW SCHEMATIC		DWG NO MST1505		SIZE D		1505.dwg	

8 7 6 5 4 3 2 1

REV	ZONE	REVISION	DATE	ECN	NAME	CHKD
H-1	ALL	ADDED P&MI SHEETS	10/18/11	22609	AEK	GES
J-1	ALL	UPDATED P&MI PANEL TO CORRECT ENCLOSURE SIZE	2/21/12	22723	AEK	GES
K-1	2 ALL	CORRECTED/ADDED FLEX LINES	8/20/12	PXEC0009	AEK	GES
L-1	5 ALL	ADDED SHEET 5, SHIP VIEW.	8/28/12	22723	GES	DMS
M-1	2 BS-BS	ADDED UNIONS	2/20/13	PXEC0030	AEK	GES
N-1	2 A7-D7	CORRECTED INLET PLUMBING SIZE	4/17/13	PXEC0030	AEK	GES
N-2	2 A7-D7	CORRECTED INLET PLUMBING PER BUILD	9/10/13	PXEC0030	GES	DMS
P-1	ALL	UPDATED DRYER OUTLET ORIENTATION	4/1/15	PXEC0100	AEK	GES



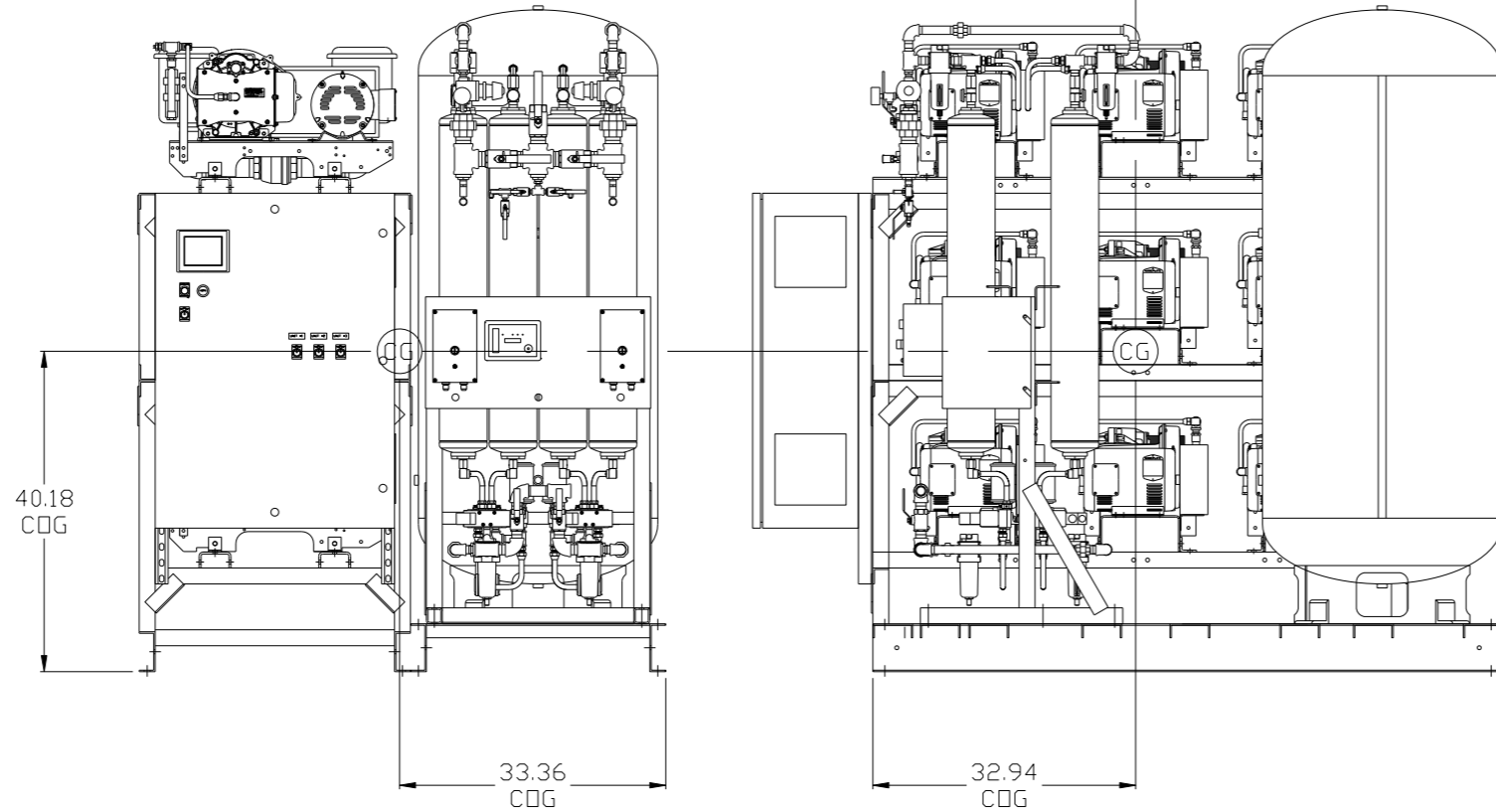
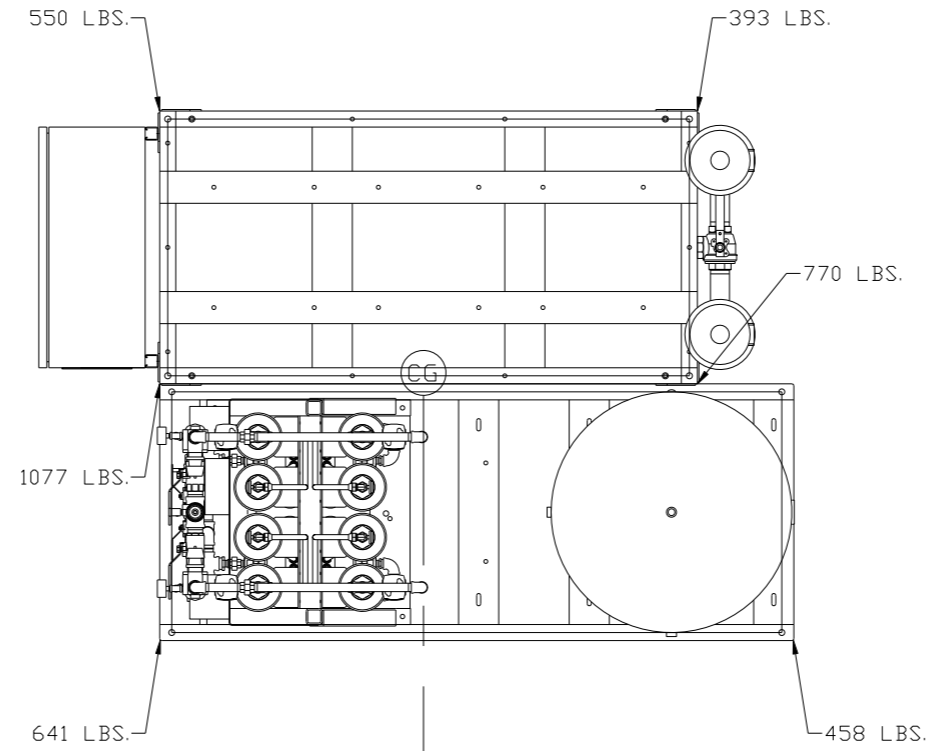
PUMP SKID:
TOTAL WEIGHT: 2231 LBS
C.O.G. DIMENSIONS
X (FRONT): -15.34"
Y (RIGHT): 33.31"
Z (HEIGHT): 43.15"

ATC SKID:
TOTAL WEIGHT: 1658 LBS
C.O.G. DIMENSIONS
X (FRONT): -16"
Y (RIGHT): -36.321"
Z (HEIGHT): 39.12"

(CG) denotes center of gravity

SYMBOL LEGEND ⊖ = MINUS DRAFT ⊕ = PLUS DRAFT ⊕ = ADDITIONAL CONTROL REQ'D HRC = BRINELL HARDNESS		Drawings to conform to the current revision of the following ANSI standards: Y14.3 Multi and sectional view dsgs. Y14.5M Dimensioning and tolerancing	
TOLERANCES NOT SPECIFIED .XX ± .XXX ± \angle(DEG) ±		DO NOT SCALE DRAWING FOR DIMENSIONS Sheet 3 of 5 SCALE 1:12	
CONFIDENTIAL DISCLOSURE This drawing is the property of POWEREX, INC. of the SCOTT FETZER COMPANY and subject to return on demand. Its contents are confidential and must not be copied or submitted to outside parties for use or examination.			
DRAWN BY: AEK CHECKED BY: GES 10/18/11		APPROVED BY: ENGINEERING MFG/MKTG DMS RJR 10/18/11 10/18/11 10/18/11 10/18/11	
MATERIAL: N/A		 150 PRODUCTION DRIVE, HARRISON, OHIO 45030 Ph: 888-769-7979 FAX: (513) 367-3125	
PART NAME: TRIPLEX DILLESS SCROLL 15HP, 200GAL. BASEMOUNT DUPLEX DESICCANT		DWG NO: MST1505 SIZE: D	

REV	ZONE	REVISION	DATE	ECN	NAME	CHKD
H-1	ALL	ADDED PBM1 SHEETS	10/18/11	22609	AEK	GES
J-1	ALL	UPDATED PBM1 PANEL TO CORRECT ENCLOSURE SIZE	2/21/12	22723	AEK	GES
K-1	2 ALL	CORRECTED/ADDED FLEX LINES	8/20/12	PXEC0009	AEK	GES
L-1	5 ALL	ADDED SHEET 5, SHIP VIEW.	8/28/12	22723	GES	DMS
M-1	2 BS-BS	ADDED UNIONS	2/20/13	PXEC0030	AEK	GES
N-1	2 A7-D7	CORRECTED INLET PLUMBING SIZE	4/17/13	PXEC0030	AEK	GES
N-2	2 A7-D7	CORRECTED INLET PLUMBING PER BUILD	9/10/13	PXEC0030	AEK	DMS
P-1	ALL	UPDATED DRYER OUTLET ORIENTATION	4/1/15	PXEC0100	AEK	GES



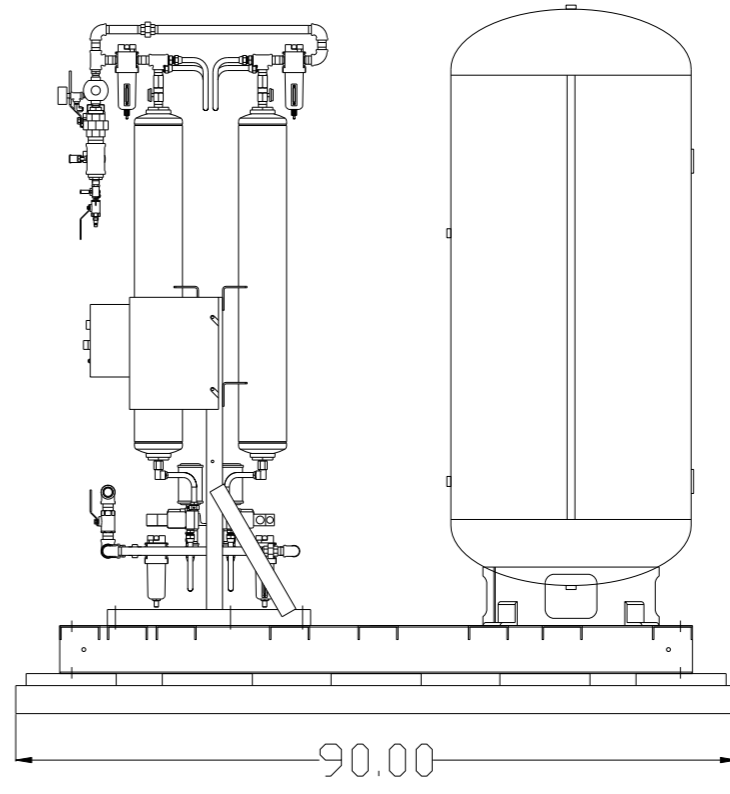
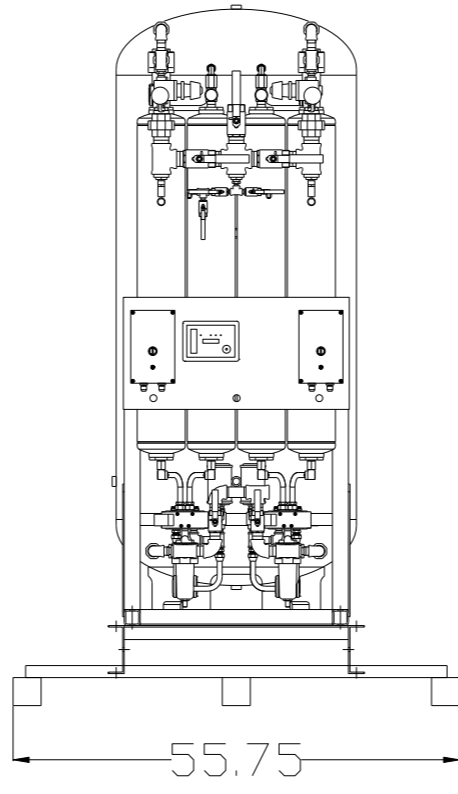
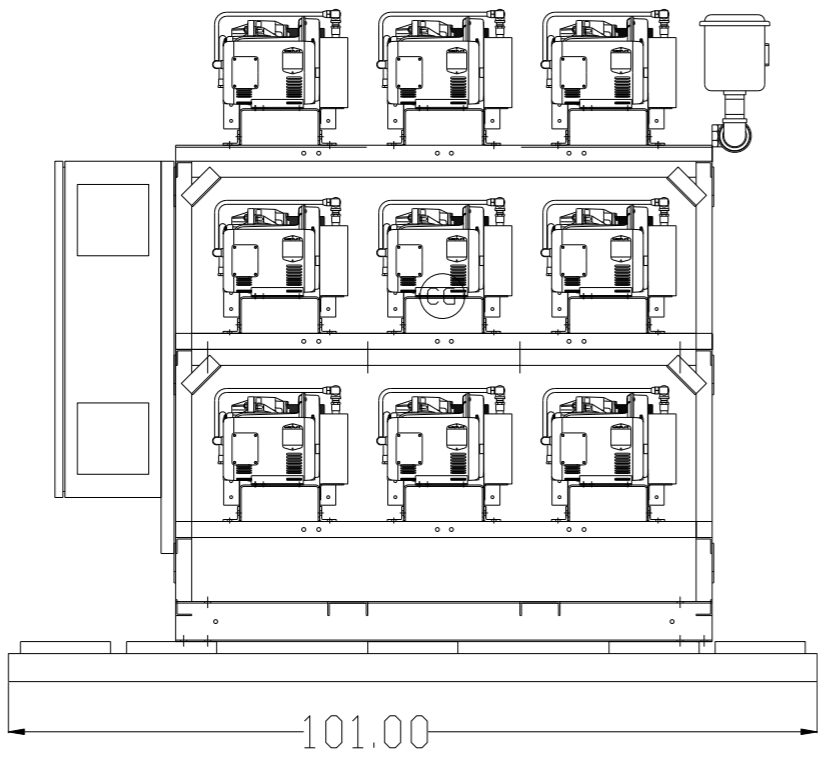
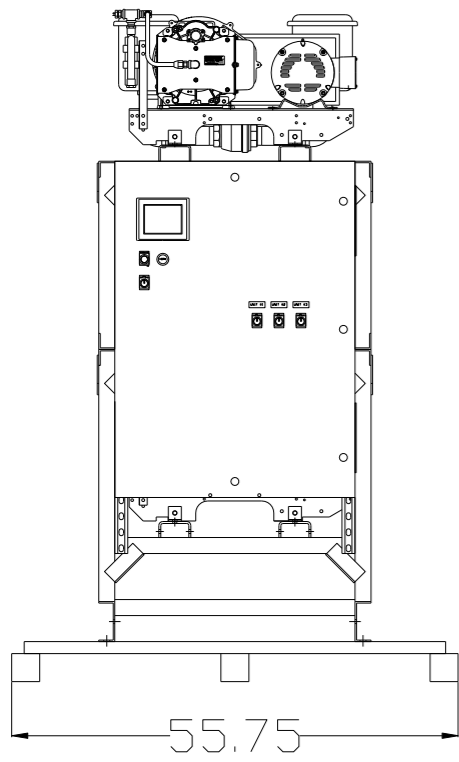
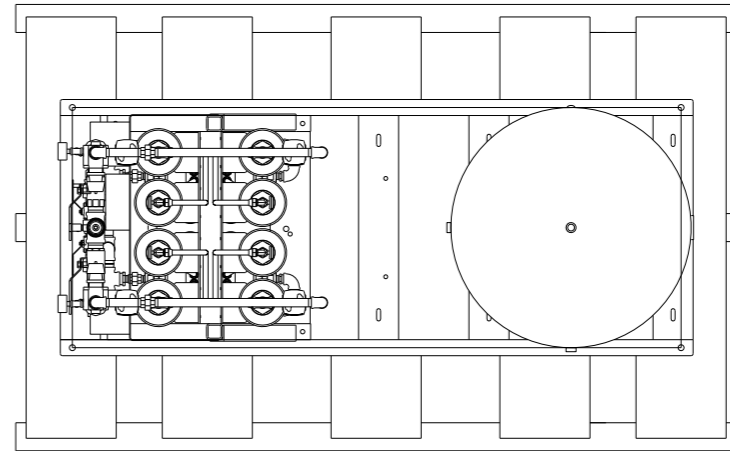
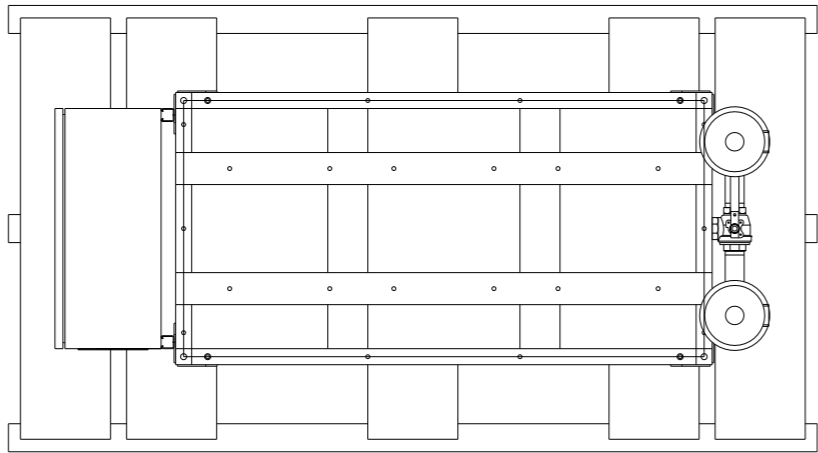
SYSTEM:
 TOTAL WEIGHT: 3889 LBS
 C.O.G. DIMENSIONS
 X (FRONT): -33.36"
 Y (RIGHT): 32.94"
 Z (HEIGHT): 40.18"

(CG) denotes center of gravity

SYMBOL LEGEND ⊖ = MINUS DRAFT ⊕ = PLUS DRAFT TOLERANCES NOT SPECIFIED .XX ± .XXX ± \angle (DEG.) ±		= ADDITIONAL CONTROL REQ'D = BRINELL HARDNESS		Drawings to conform to the current revision of the following ANSI standards: Y14.3 Multi and sectional view dsgs. Y14.5M Dimensioning and tolerancing	
AUTOCAD REL2008 LT INCH		DO NOT SCALE DRAWING FOR DIMENSIONS Sheet 4 of 5 SCALE 1:12			
CONFIDENTIAL DISCLOSURE This drawing is the property of POWEREX, INC. or the SCOTT FELTZER COMPANY and subject to return on demand. Its contents are confidential and must not be copied or submitted to outside parties for use or examination.		DRAWN BY AEK	CHECKED BY GES	APPROVED BY ENGINEERING DMS	MFG/MKTG RJR
MATERIAL N/A		10/18/11	10/18/11	10/18/11	10/18/11
PART NAME TRIPLEX DILLESS SCROLL 15HP, 200GAL. BASEMOUNT DUPLEX DESICCANT		 150 PRODUCTION DRIVE, HARRISON, OHIO 45030 Ph: 888-769-7979 FAX: (513) 367-3125		DWG NO MST1505 SIZE D	

8 7 6 5 4 3 2 1

REV	ZONE	REVISION	DATE	ECN	NAME	CHKD
L-1	4ALL	ADDED SHEET 5, SHIP VIEW.	8/28/12	22723	GES	DMS
M-1	2 85-25	ADDED UNIONS	2/20/13	PXEC0030	AEK	GES
N-1	2 A7-D7	CORRECTED INLET PLUMBING SIZE	4/17/13	PXEC0030	AEK	GES
N-2	2 A7-D7	CORRECTED INLET PLUMBING PER BUILD	9/10/13	PXEC0030	GES	DMS
P-1	ALL	UPDATED DRYER OUTLET ORIENTATION	4/1/15	PXEC0000	AEK	GES



8 7 6 5 4 3 2 1

SYMBOL LEGEND ⊖ = MINUS DRAFT ⊕ = PLUS DRAFT ⊕ = ADDITIONAL CONTROL REQ'D ⊕ = BRINELL HARDNESS		Drawings to conform to the current revision of the following ANSI standards: Y14.3 Multi and sectional view dings Y14.5M Dimensioning and tolerancing	
TOLERANCES NOT SPECIFIED .XX ± .XXX ± <<DEG>> ±		AUTOCAD REL2000 LT INCH DO NOT SCALE DRAWING FOR DIMENSIONS Sheet 5 of 5 SCALE 1:12	
CONFIDENTIAL DISCLOSURE This drawing is the property of POWEREX, INC. of the SCOTT FETZER COMPANY and subject to return on demand. Its contents are confidential and must not be copied or submitted to outside parties for use or examination.		DRAWN BY: GES CHECKED BY: DMS APPROVED BY: GES MFG/MRK'G: DFG 8/28/12 8/28/12 8/28/12 8/28/12	
MATERIAL: N/A		 150 PRODUCTION DRIVE, HARRISON, OHIO 45030 Ph: 888-769-7979 FAX: (513) 367-3125	
PART NAME: TRIPLEX DILLESS SCROLL 15HP, 200GAL, BASEMOUNT DUPLEX DESICCANT		DWG NO: MST1505 SIZE: D	