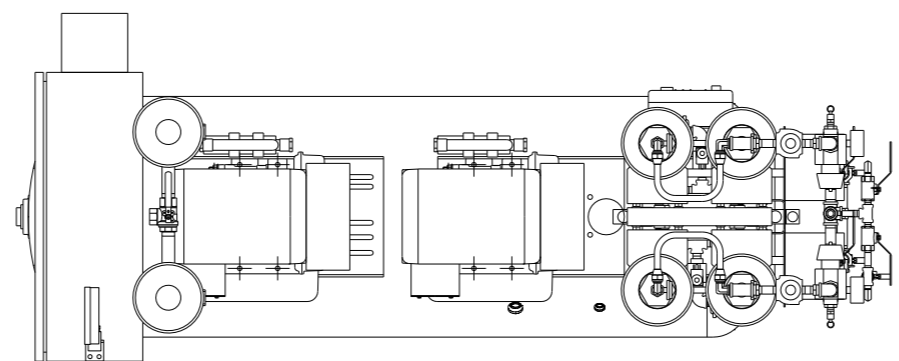


REV	ZONE	REVISION	DATE	ECN	NAME	CHKD
B-1	ALL	RELEASE TO PRODUCTION	08/15/06	21555	RSN	DMS
C-1	C-3	ADDED MANUAL DRAIN	07/31/07	21669	DMS	GES
C-2	D6-B3	REPLACED DIV VALVES WITH BALL VALVES ADDED 140 & 75 PSI SRV	12/07/07	21669	DMS	GES
C-3	D4-D5	ADDED ISO VALVE & HANG TAG ADDED TANK GAUGE	07/02/08	21907	DMS	GES
D-1	ALL	UPDATED DEW POINT MONITOR & ADDED SEPARATOR NOTE	6/16/09	22127	AEK	GES
E-1	ALL	UPDATED TO POWEREX DRYER	11/10/09	22120	AEK	GES
E-2	1 ALL	UPDATED DRYER TO CURRENT BUILD	11/24/09	22120	AEK	GES
F-1	ALL	ADDED P&ID SHEETS	12/19/11	22609	AEK	GES
G-1	1 ALL	REMOVED DISCONNECT FROM PANEL FACE OF STANDARD PANEL	6/13/12	22752	AEK	GES
H-1	2 ALL	ADDED/UPDATED FLEX LINES	10/8/12	PXEC0003	AEK	DMS
H-2	1 ALL	REMOVED CO MONITOR FROM THE CONTROL PANEL ADDED SIGHT GAUGE	11/12/13	PXEC0030	AEK	GES
J-1	2 C4	MOVED PRESSURE SENSING LOCATION	5/21/14	PXEC0071	AEK	GES
K-1	2 BS,C5	CHANGED FLEX LINES TO 3/4"	8/13/15	PXEC0093	AEK	GES
L-1	ALL	ADDED TOP VIEW	10/22/15	PXEC0093	AEK	GES



2X DESICCANT DRYERS  
W/ PRE FILTER, AFTER FILTER  
& OPTIONAL CHARCOAL FILTER.

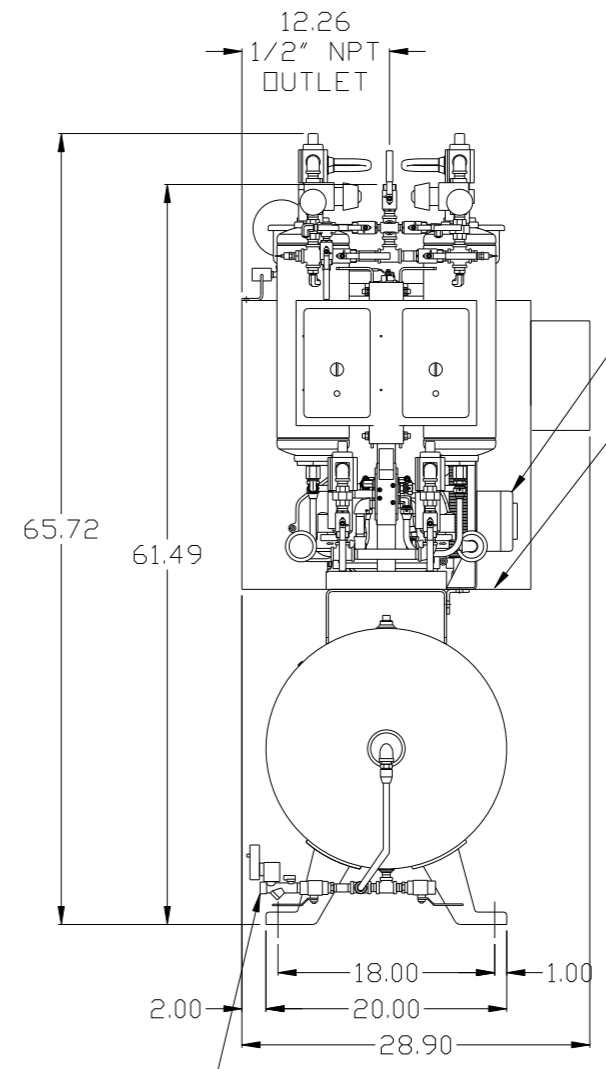
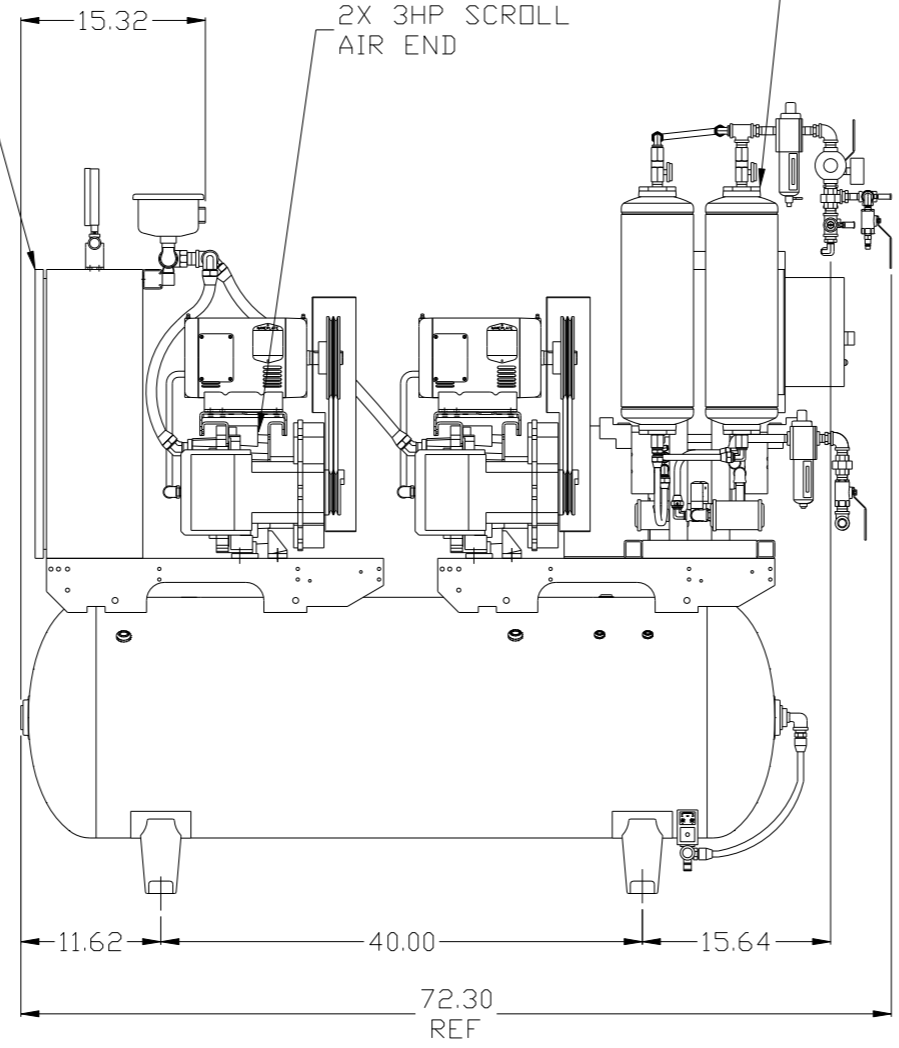
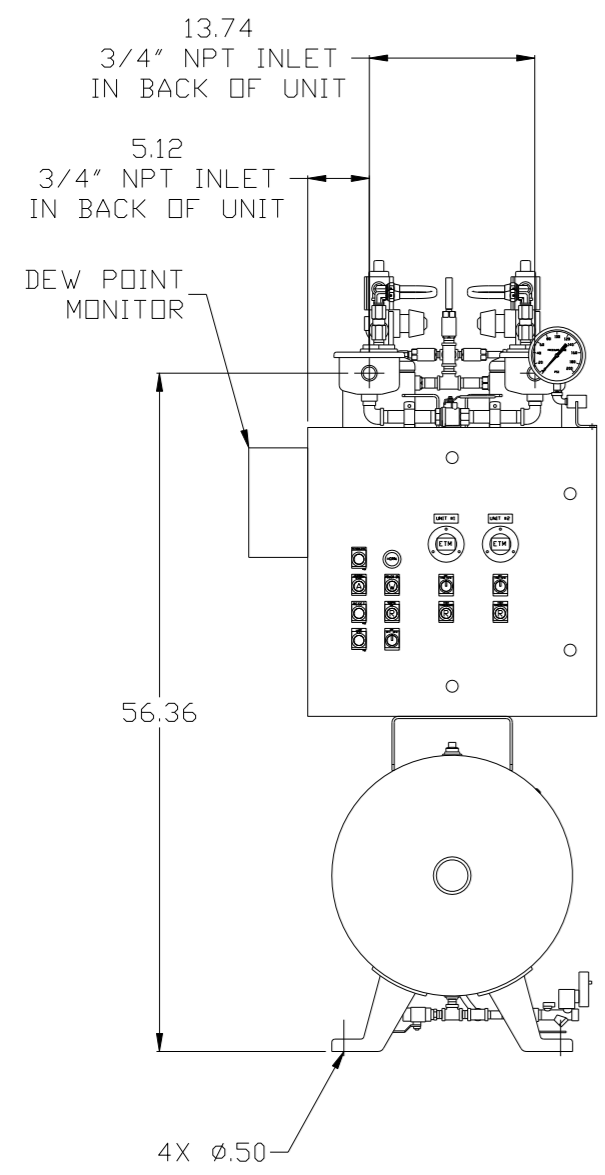
2X 3HP SCROLL  
AIR END

CONTROL  
PANEL

12.26  
1/2" NPT  
OUTLET

CO MONITOR  
SCROLL AFTERCOOLER  
SEPARATORS  
MUST BE RIGIDLY  
SUPPORTED

ELECTRIC  
AUTO DRAIN



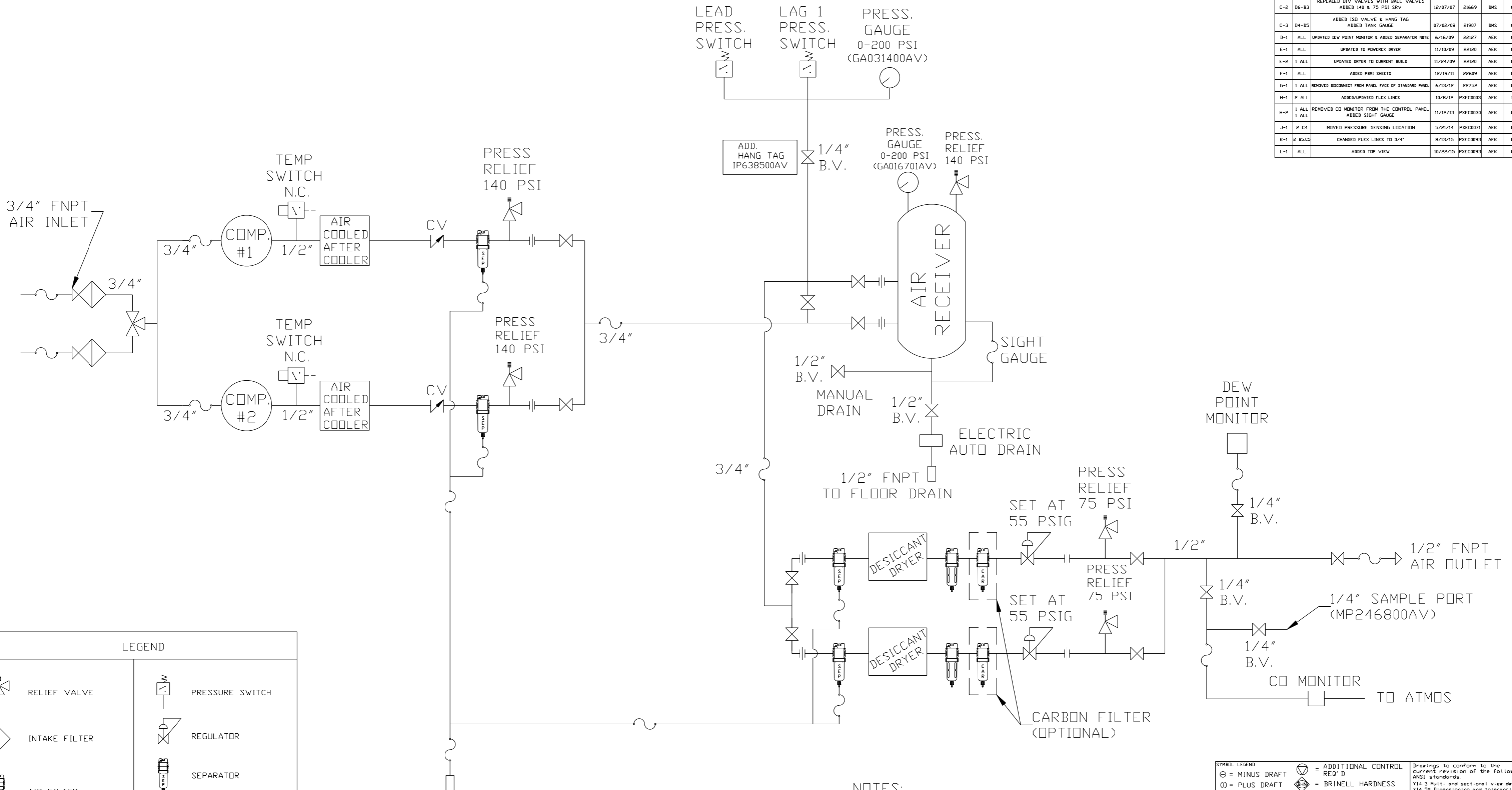
NOTE: SYSTEM DESIGNED IN  
COMPLIANCE WITH U.S. NFPA '99,  
LATEST EDITION.

NOTE: A MINIMUM OF 24" CLEARANCE IS  
RECOMMENDED AROUND THE ENTIRE UNIT.

NOTE: TANK PLUMBING NOT SHOWN  
FOR DRAWING CLARITY.

SYMBOL LEGEND ⊖ = MINUS DRAFT ⊕ = PLUS DRAFT ○ = ADDITIONAL CONTROL REQ'D ◊ = BRINELL HARDNESS		Drawings to conform to the current revision of the following ANSI standards: Y14.3 Multi and sectional view dgs. Y14.5M Dimensioning and tolerancing	
TOLERANCES NOT SPECIFIED .XX ± .XXX ± <math>\angle</math>(DEG) ±		AUTOCAD REL2000: <b>INCH</b>	
CONFIDENTIAL DISCLOSURE This drawing is the property of the CAMPBELL GROUP OF THE SCOTT FETZER COMPANY and subject to return on demand. Its contents are confidential and must not be copied or submitted to outside parties for use or examination.		DO NOT SCALE DRAWING FOR DIMENSIONS Sheet 1 of 2 SCALE 1:8	
DRAWN BY: RSN CHECKED BY: DMS APPROVED BY: DMS, JJ 05/31/06 7/07/06 7/07/06 7/07/06		 150 PRODUCTION DRIVE, HARRISON, OHIO 45030 Ph 888-769-7979 FAX (513) 367-3125	
MATERIAL: N/A PART NAME: DUPLEX OILLESS SCROLL 3HP, 80 GALLON WITH DRYER		DWG NO: MTSD0303 SIZE: D	

REV	ZONE	REVISION	DATE	ECN	NAME	CHKD
B-1	ALL	RELEASE FOR PRODUCTION	07/19/06	21437	RSN	DMS
C-1	C-3	ADDED MANUAL DRAIN	07/31/07	21669	DMS	GES
C-2	D6-B3	REPLACED BIV VALVES WITH BALL VALVES ADDED 140 & 75 PSI SRV	12/07/07	21669	DMS	GES
C-3	D4-D5	ADDED ISD VALVE & HANG TAG ADDED TANK GAUGE	07/02/08	21907	DMS	GES
D-1	ALL	UPDATED DEW POINT MONITOR & ADDED SEPARATOR NOTE	6/16/09	22127	AEK	GES
E-1	ALL	UPDATED TO POWEREX DRYER	11/10/09	22129	AEK	GES
E-2	1 ALL	UPDATED DRYER TO CURRENT BUILD	11/24/09	22120	AEK	GES
F-1	ALL	ADDED P&ID SHEETS	12/19/11	22609	AEK	GES
G-1	1 ALL	REMOVED DISCONNECT FROM PANEL FACE OF STANDARD PANEL	6/13/12	22752	AEK	GES
H-1	2 ALL	ADDED/UPDATED FLEX LINES	10/8/12	PXEC0003	AEK	DMS
H-2	1 ALL	REMOVED CO MONITOR FROM THE CONTROL PANEL ADDED SIGHT GAUGE	11/12/13	PXEC0030	AEK	GES
J-1	2 C4	MOVED PRESSURE SENSING LOCATION	5/21/14	PXEC0071	AEK	GES
K-1	2 B5,C5	CHANGED FLEX LINES TO 3/4"	8/13/15	PXEC0093	AEK	GES
L-1	ALL	ADDED TOP VIEW	10/22/15	PXEC0093	AEK	GES

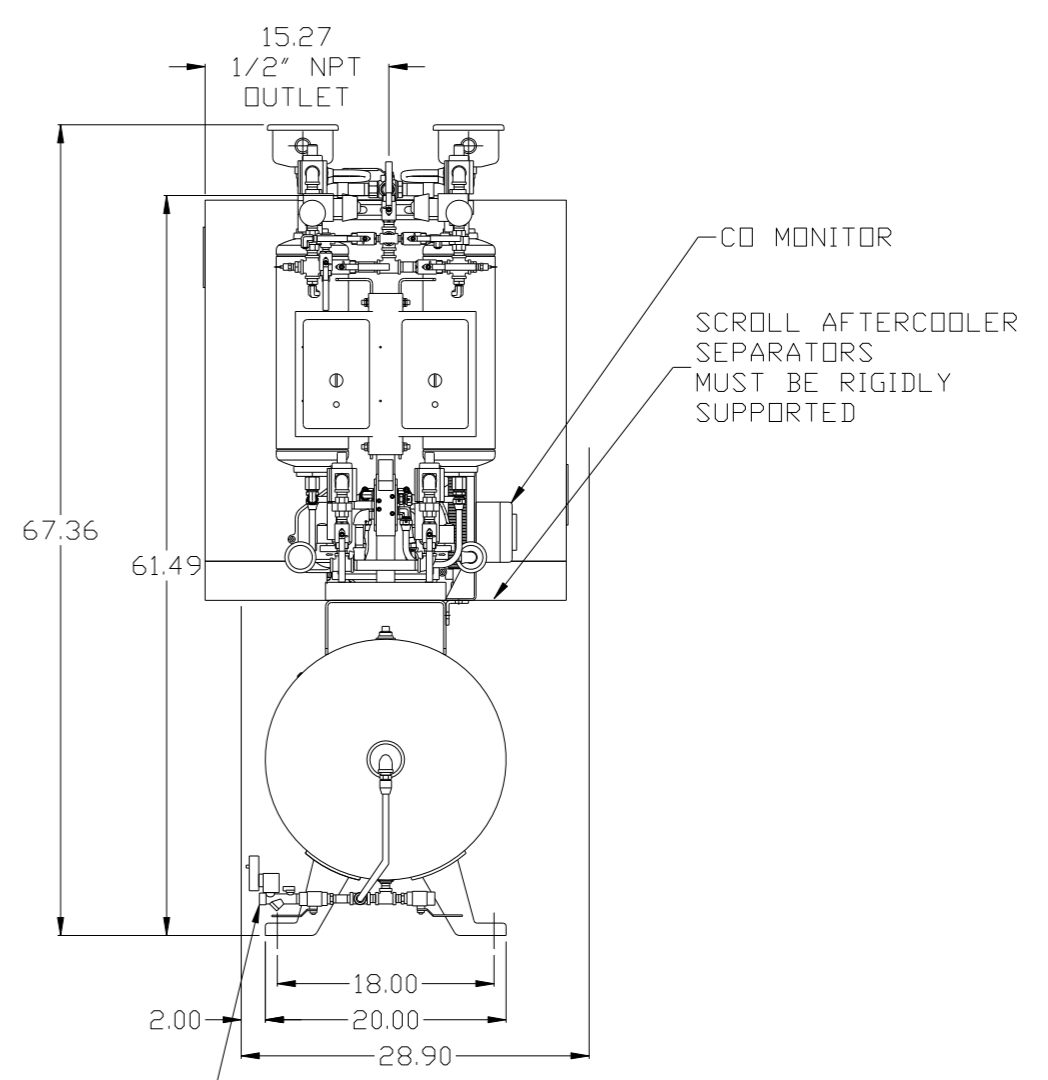
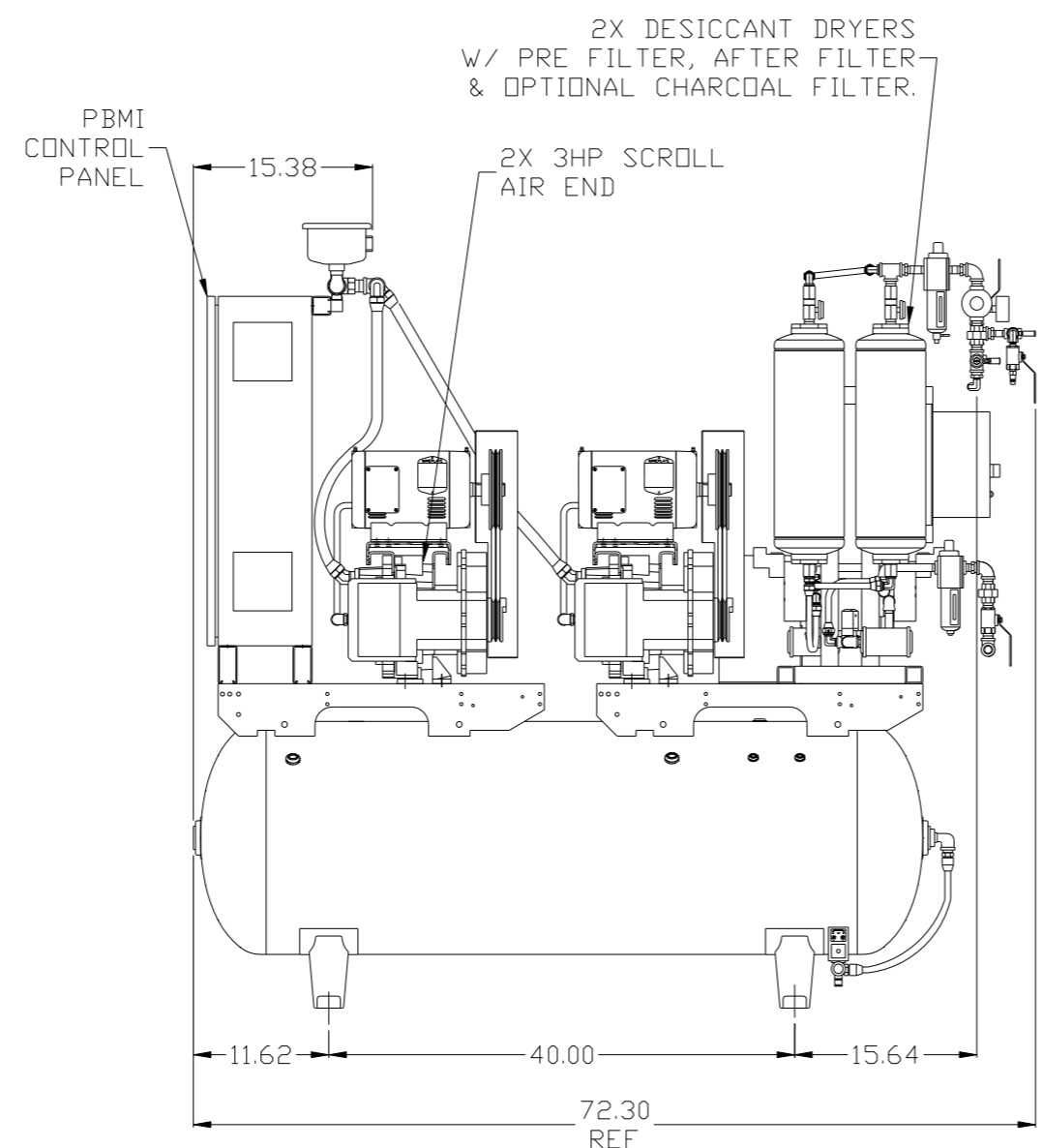
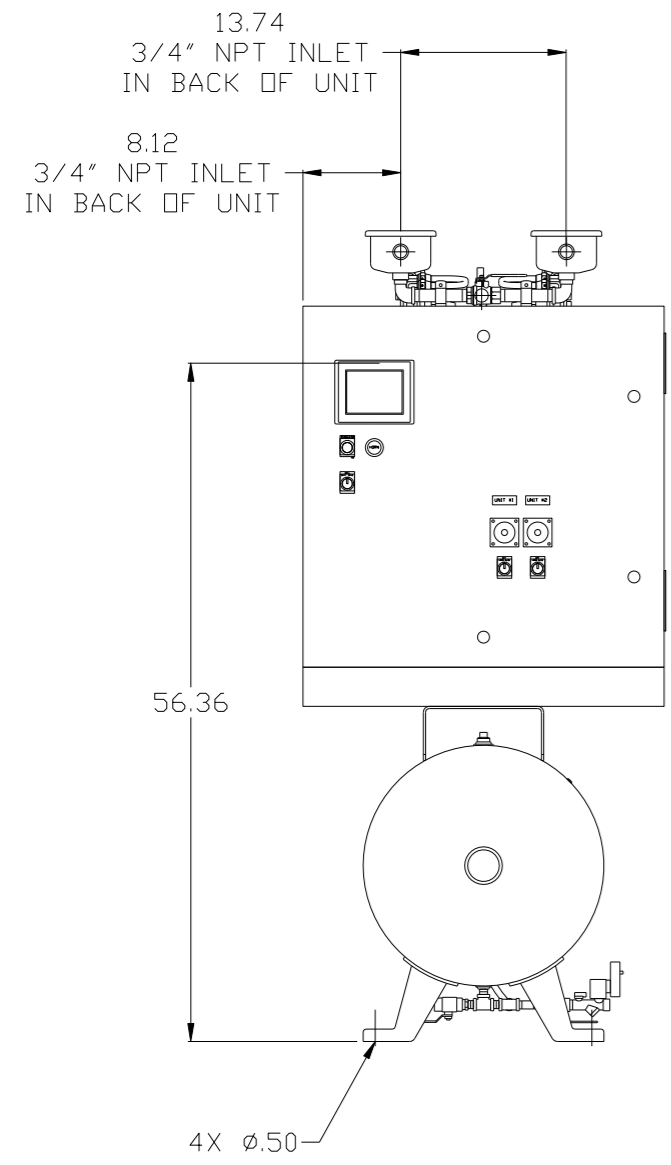
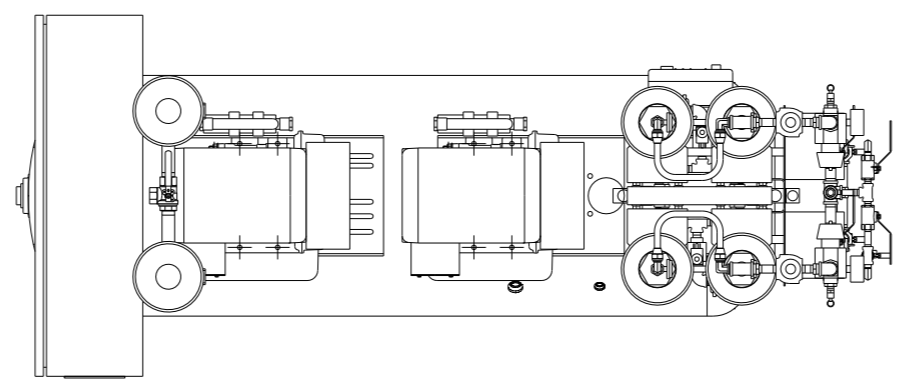


LEGEND	
	RELIEF VALVE
	INTAKE FILTER
	AIR FILTER
	3 WAY VALVE
	CARBON FILTER
	BALL VALVE
	PRESSURE SWITCH
	REGULATOR
	SEPARATOR
	CHECK VALVE
	FLEX LINE
	HIGH TEMP SWITCH
	UNION

- NOTES:
- 1) IF LAG 1 COMPRESSOR IS ENERGIZED ALARM WILL OCCUR.
  - 2) PIPING TO THE INLET BY OTHERS AND TO BE PER NFPA99 4-3.1.1.9(b)
  - 3) INSTRUMENTS DOWN STREAM OF SOURCE VALVE TO BE SUPPLIED BY OTHERS.

SYMBOL LEGEND		= ADDITIONAL CONTROL REQ'D = BRINELL HARDNESS	Drawings to conform to the current revision of the following ANSI standards: Y14.3 Multi and sectional view dgs. Y14.5M Dimensioning and tolerancing
TOLERANCES NOT SPECIFIED	AUTOCAD 2000:	DO NOT SCALE DRAWING FOR DIMENSIONS	
.XX ±	INCH	Sheet 2 of 2	SCALE 1:8
.XXX ±			
<<DEG>> ±			
<small>CONFIDENTIAL DISCLOSURE</small> This drawing is the property of the CAMPBELL GROUP OF THE SCOTT FETZER COMPANY and subject to return on demand. Its contents are confidential and must not be copied or submitted to outside parties for use or examination.		DRAWN BY	CHECKED BY
		RSN	DMS
		APPROVED BY	ENGINEERING MFG/MRKTG
		07/19/06	10/09/06
MATERIAL		N/A/	
PART NAME		DUPLX SCROLL FLOW SCHEMATIC	
DWG NO		MTSD0303	
SIZE		D	

REV	ZONE	REVISION	DATE	ECN	NAME	CHKD
F-1	ALL	ADDED PBM1 SHEETS	12/19/11	22609	AEK	GES
G-1	1 ALL	REMOVED DISCONNECT FROM PANEL FACE OF STANDARD PANEL	6/13/12	22752	AEK	GES
H-1	2 ALL	ADDED/UPDATED FLEX LINES	10/8/12	PXEC0003	AEK	DMS
H-2	1 ALL	REMOVED CO MONITOR FROM THE CONTROL PANEL	11/12/13	PXEC0030	AEK	GES
	1 ALL	ADDED SIGHT GAUGE				
J-1	2 C4	MOVED PRESSURE SENSING LOCATION	5/21/14	PXEC0071	AEK	GES
K-1	2 R5,C5	CHANGED FLEX LINES TO 3/4"	8/13/15	PXEC0093	AEK	GES
L-1	ALL	ADDED TOP VIEW	10/22/15	PXEC0093	AEK	GES



NOTE: SYSTEM DESIGNED IN COMPLIANCE WITH U.S. NFPA '99, LATEST EDITION.

NOTE: A MINIMUM OF 24" CLEARANCE IS RECOMMENDED AROUND THE ENTIRE UNIT.

NOTE: TANK PLUMBING NOT SHOWN FOR DRAWING CLARITY.

<b>SYMBOL LEGEND</b> ⊖ = MINUS DRAFT ⊕ = PLUS DRAFT ○ = ADDITIONAL CONTROL REQ'D ◊ = BRINELL HARDNESS		Drawings to conform to the current revision of the following ANSI standards: Y14.3 Multi and sectional view dgs. Y14.5M Dimensioning and tolerancing	
TOLERANCES NOT SPECIFIED .XX ± .XXX ± <math>\angle</math>(DEG.) ±		DO NOT SCALE DRAWING FOR DIMENSIONS Sheet 1 of 2 SCALE 1:8	
<b>CONFIDENTIAL DISCLOSURE</b> This drawing is the property of the CAMPBELL GROUP OF THE SCOTT FETZER COMPANY and subject to return on demand. Its contents are confidential and must not be copied or submitted to outside parties for use or examination.		DRAWN BY: AEK CHECKED BY: GES ENGINEERING: DMS APPROVED BY: RJR 12/19/11 12/19/11 12/19/11 12/19/11	
MATERIAL: N/A		<b>POWEREX</b> 150 PRODUCTION DRIVE, HARRISON, OHIO 45030 Ph: 888-769-7979 FAX: (513) 367-3125	
PART NAME: DUPLEX OILLESS SCROLL 3HP, 80 GALLON WITH DRYER		DWG NO: MTSD0303 SIZE: D	

ELECTRIC AUTO DRAIN

CO MONITOR  
 SCROLL AFTERCOOLER SEPARATORS MUST BE RIGIDLY SUPPORTED

8 7 6 5 4 3 2 1

D

D

C

C

B

B

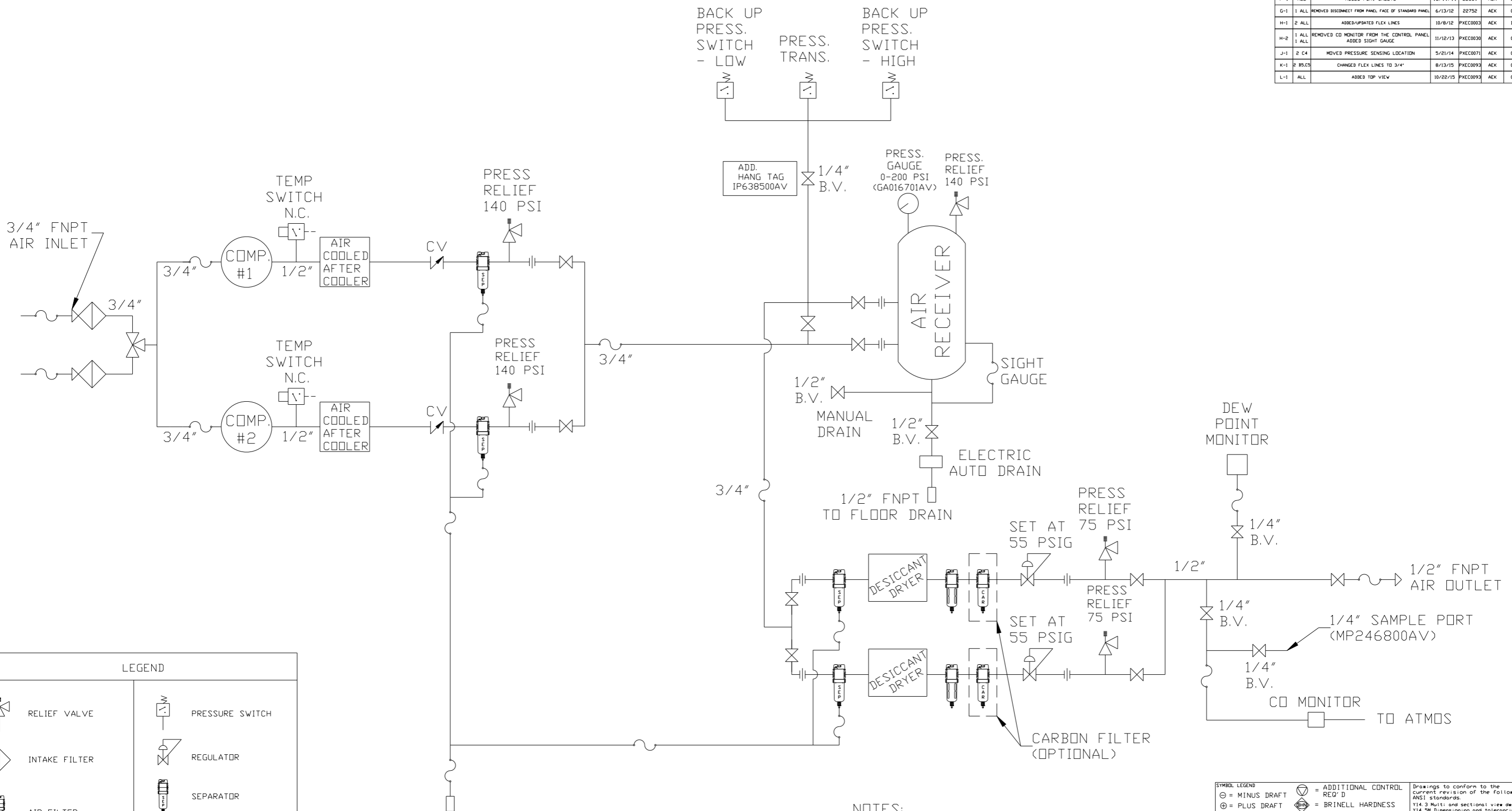
A

A

8 7 6 5 4 3 2 1

MTSD0303.dwg

REV	ZONE	REVISION	DATE	ECN	NAME	CHKD
F-1	ALL	ADDED P&ID SHEETS	12/19/11	22609	AEK	GES
G-1	1 ALL	REMOVED DISCONNECT FROM PANEL FACE OF STANDARD PANEL	6/13/12	22752	AEK	GES
H-1	2 ALL	ADDED/UPDATED FLEX LINES	10/8/12	PXEC0003	AEK	DMS
H-2	1 ALL	REMOVED CO MONITOR FROM THE CONTROL PANEL ADDED SIGHT GAUGE	11/12/13	PXEC0030	AEK	GES
J-1	2 C4	MOVED PRESSURE SENSING LOCATION	5/21/14	PXEC0071	AEK	GES
K-1	2 B5,C5	CHANGED FLEX LINES TO 3/4"	8/13/15	PXEC0093	AEK	GES
L-1	ALL	ADDED TOP VIEW	10/22/15	PXEC0093	AEK	GES



LEGEND	
	RELIEF VALVE
	INTAKE FILTER
	AIR FILTER
	3 WAY VALVE
	CARBON FILTER
	BALL VALVE
	PRESSURE SWITCH
	REGULATOR
	SEPARATOR
	CHECK VALVE
	FLEX LINE
	HIGH TEMP SWITCH
	UNION

- NOTES:
- 1) IF LAG 1 COMPRESSOR IS ENERGIZED ALARM WILL OCCUR.
  - 2) PIPING TO THE INLET BY OTHERS AND TO BE PER NFPA99 4-3.1.1.9(b)
  - 3) INSTRUMENTS DOWN STREAM OF SOURCE VALVE TO BE SUPPLIED BY OTHERS.

SYMBOL LEGEND		= ADDITIONAL CONTROL REQ'D	Drawings to conform to the current revision of the following ANSI standards
= MINUS DRAFT	= BRINELL HARDNESS	Y14.3 Multi and sectional view dsgs. Y14.5M Dimensioning and tolerancing	
TOLERANCES NOT SPECIFIED	AUTOCAD REL2008 LT	DO NOT SCALE DRAWING FOR DIMENSIONS	
.XX ±	INCH	Sheet 2 of 2	SCALE 1:8
.XXX ±		CONFIDENTIAL DISCLOSURE: This drawing is the property of the CAMPBELL GROUP OF THE SCOTT FETZER COMPANY and subject to return on demand. Its contents are confidential and must not be copied or submitted to outside parties for use or examination.	
<<DEG>> ±		DRAWN BY: AEK	CHECKED BY: GES
		APPROVED BY: DMS	APPROVED BY: RJR
		12/19/11	12/19/11
		12/19/11	12/19/11
MATERIAL	N/A		
PART NAME	DUPLEX SCROLL FLOW SCHEMATIC	DWG NO	MTSD0303
		SIZE	D