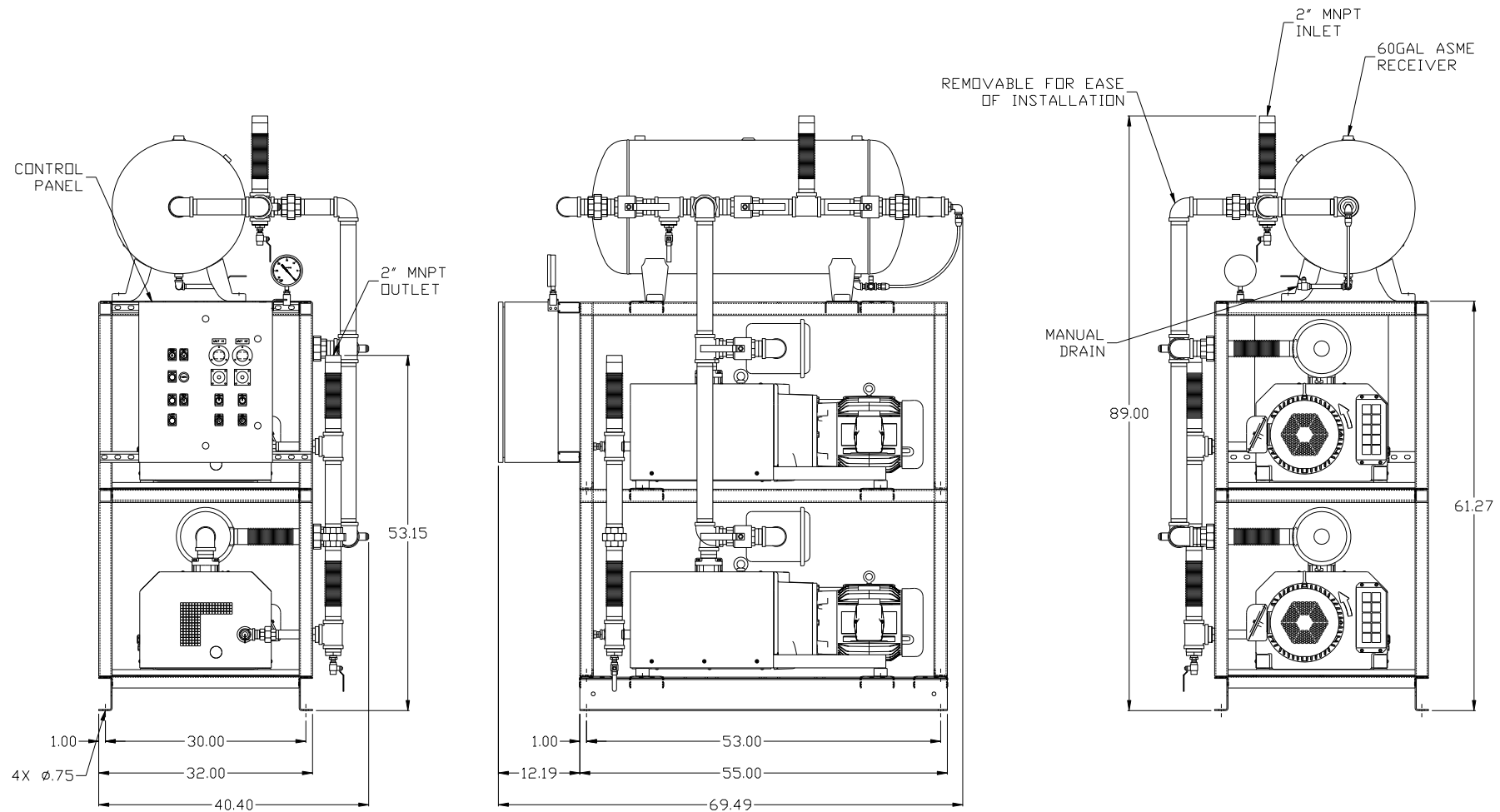
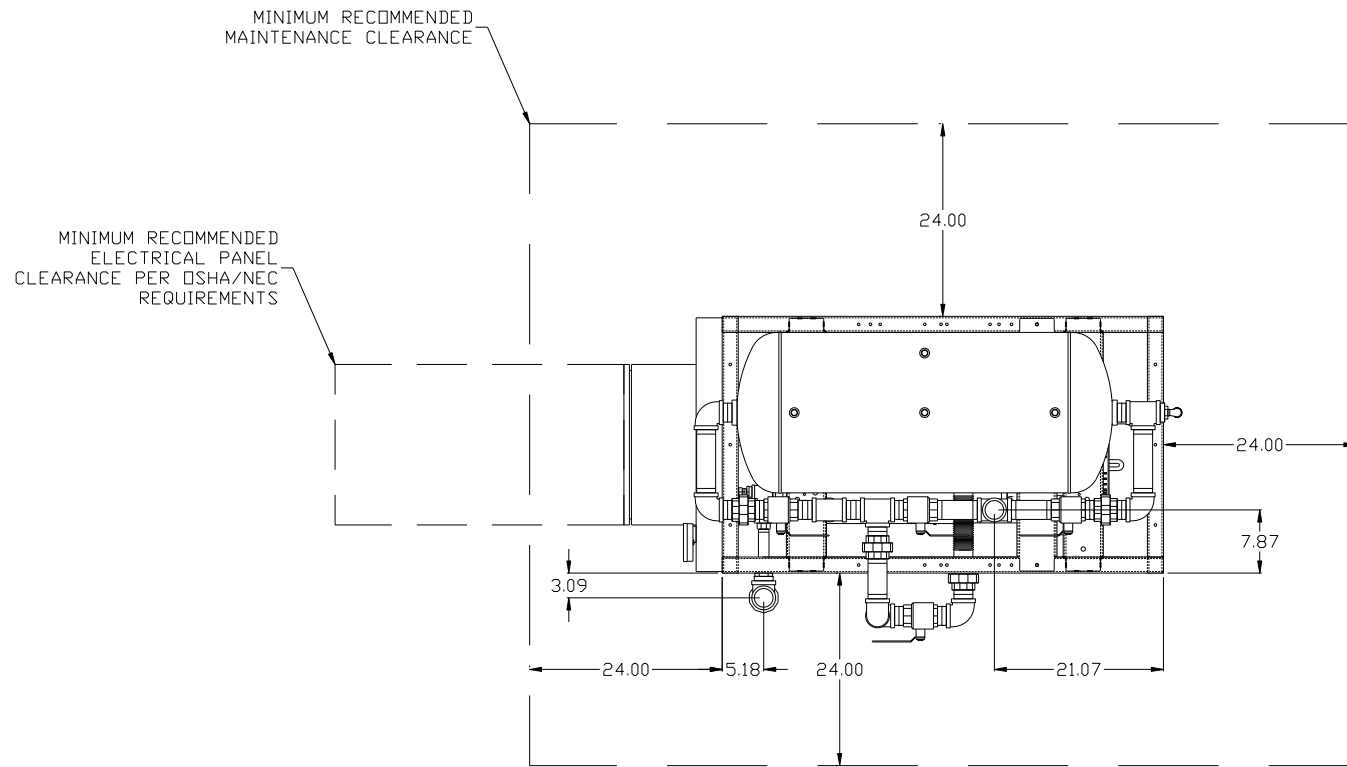


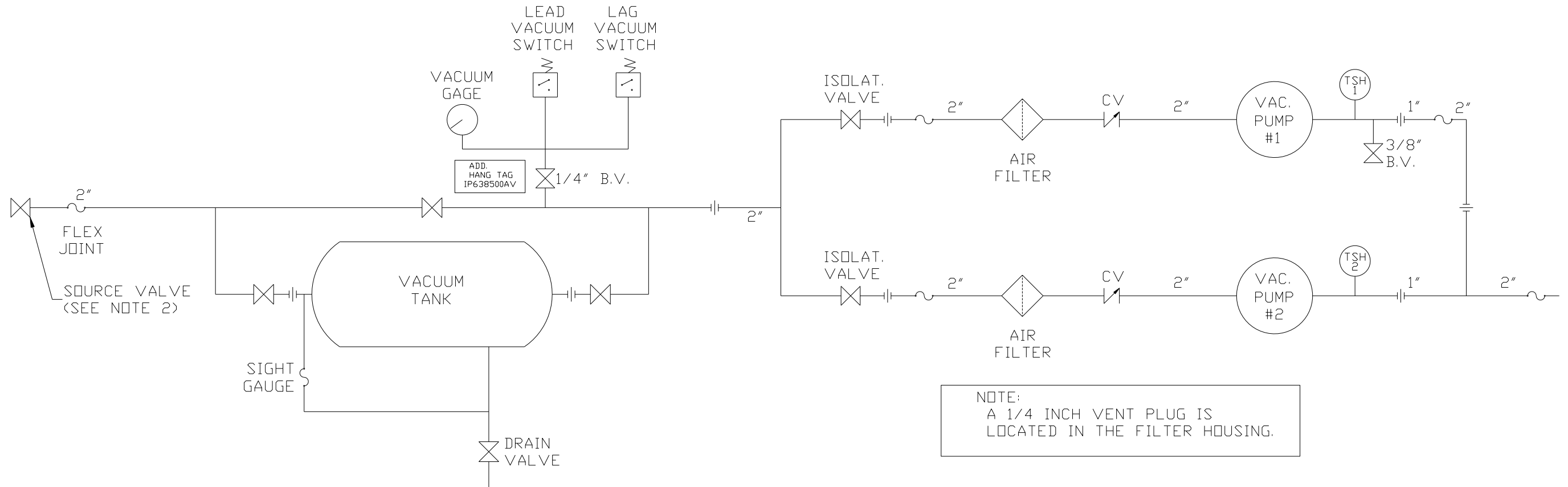
REV	ZONE	REVISION	DATE	ECN	NAME	CHKD
B-1	ALL	RELEASE TO PRODUCTION	5/8/12	22725	AEK	DMS
C-1	ALL	ADDED SIGHT GAUGE	9/19/12	PXEC0019	AEK	DMS
D-1	2 CS	MOVED VAC SWITCH MANIFOLD TO CORRECT LOCATION	12/28/12	22723	AEK	DMS
E-1	ALL	MADE HIGH TEMP STANDARD ON BASIC BUILD	11/6/13	PXEC0030	AEK	DMS
F-1	ALL	CHANGED OUTLET MANIFOLD TO 2"	1/2/15	PXEC0096	AEK	GES
G-1	1 ALL	UPDATED TO PUMP WITH NEMA RATED MOTOR	7/28/16	PXEC0149	AEK	GES



NOTE: SYSTEM DESIGNED IN COMPLIANCE WITH U.S. NFPA '99, LATEST EDITION.

SYMBOL LEGEND ⊖ = MINUS DRAFT ⊕ = PLUS DRAFT ∅ = ADDITIONAL CONTROL REQ'D HRC = BRINELL HARDNESS		Drawings to conform to the current revision of the following ANSI standards: Y14.3 Multi and sectional view dsgs. Y14.5M Dimensioning and tolerancing	
TOLERANCES NOT SPECIFIED .XX ± .XXX ± << DEG > ±		AUTOCAD REL2008 LT INCH DO NOT SCALE DRAWING FOR DIMENSIONS Sheet 1 of 2 SCALE 1:12	
CONFIDENTIAL DISCLOSURE This drawing is the property of POWEREX, INC. of the SCOTT FETZER COMPANY and subject to return on demand. Its contents are confidential and must not be copied or submitted to outside parties for use or examination.			
DRAWN BY AEK		CHECKED BY DMS	
5/8/12		APPROVED BY AEK RJR 5/8/12 5/8/12	
MATERIAL N/A		POWEREX 150 PRODUCTION DRIVE, HARRISON, OHIO 45030 Ph 888-769-7979 FAX (513) 367-3125	
PART NAME 7.5HP CLAW VAC 60GAL DUPLEX		DWG NO CVPDT0752A SIZE D	

REV	ZONE	REVISION	DATE	ECN	NAME	CHKD
B-1	ALL	RELEASE TO PRODUCTION	5/8/12	22725	AEK	DMS
C-1	ALL	ADDED SIGHT GAUGE	9/19/12	PXEC0019	AEK	DMS
D-1	2 CS	MOVED VAC SWITCH MANIFOLD TO CORRECT LOCATION	12/28/12	22723	AEK	DMS
E-1	ALL	MADE HIGH TEMP STANDARD ON BASIC BUILD	11/6/13	PXEC0030	AEK	DMS
F-1	ALL	CHANGED OUTLET MANIFOLD TO 2"	1/2/15	PXEC0096	AEK	GES
G-1	1 ALL	UPDATED TO PUMP WITH NEMA RATED MOTOR	7/28/16	PXEC0149	AEK	GES



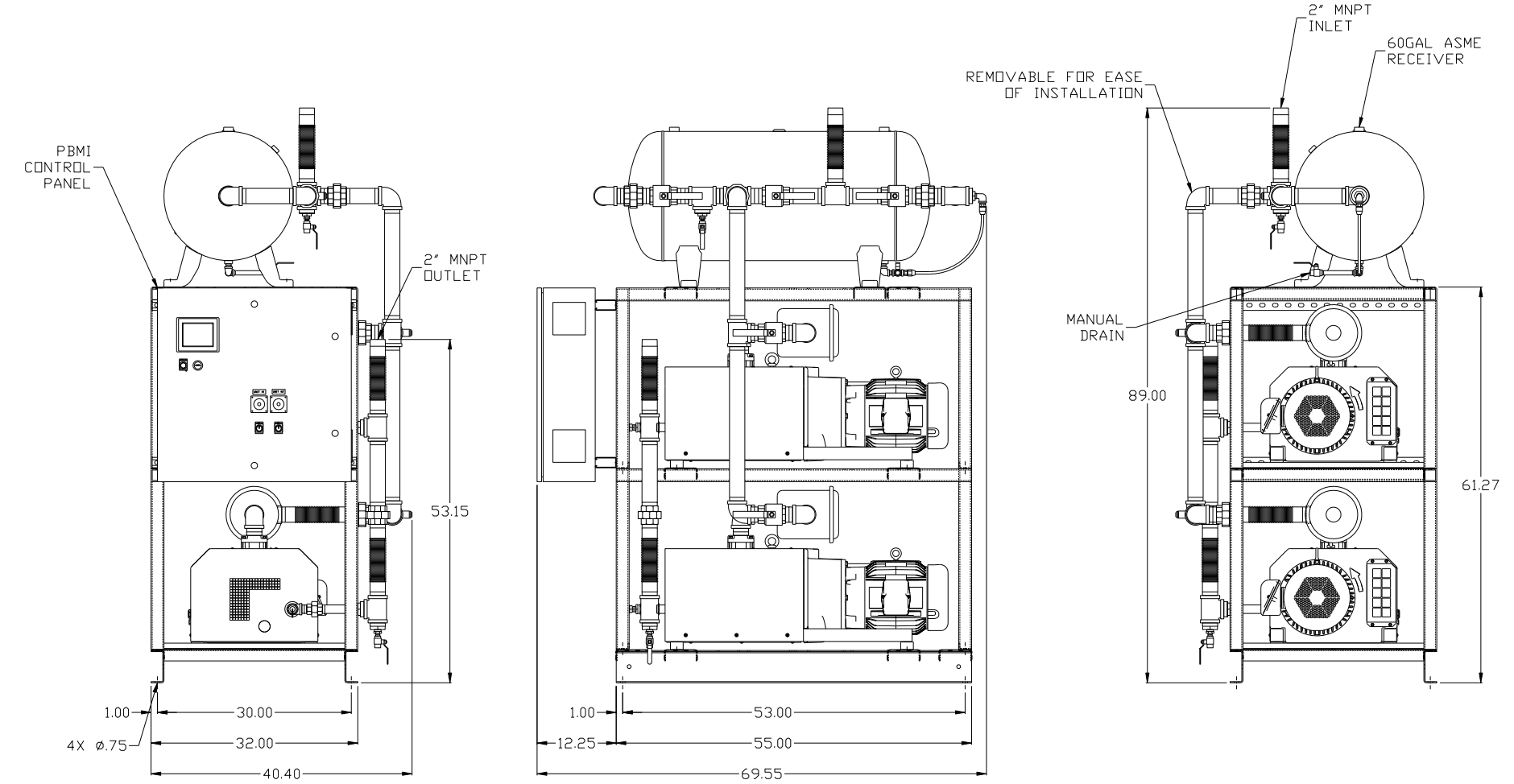
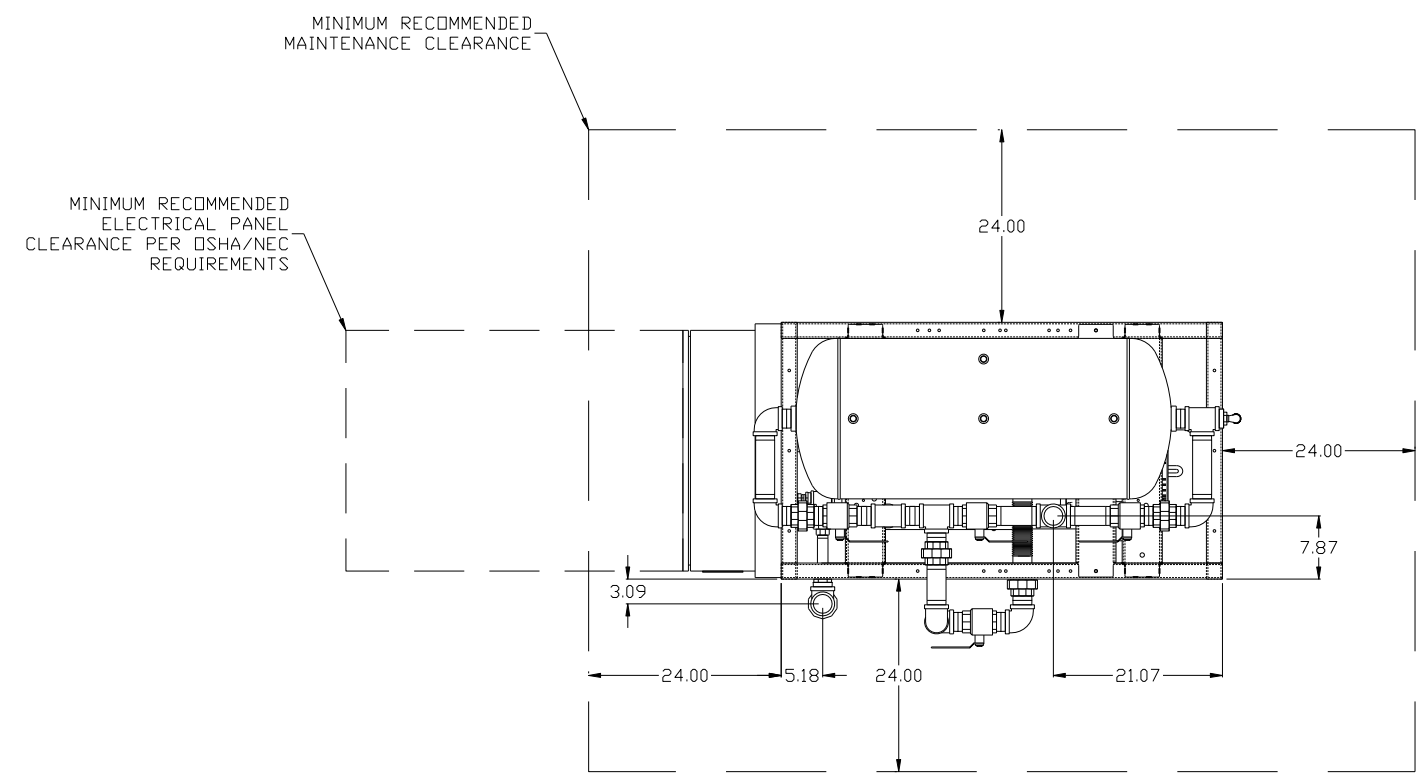
NOTE:
A 1/4 INCH VENT PLUG IS
LOCATED IN THE FILTER HOUSING.

LEGEND	
TEMP. SWITCH	VACUUM SWITCH
AIR FILTER	CHECK VALVE
BALL VALVE	FLEX LINE
	UNION

NOTES:
1) TSH - TEMPERATURE SWITCH HIGH
2) PER NFPA THE SYSTEM WILL REQUIRE A SOURCE VALVE (SUPPLIED BY OTHERS).

SYMBOL LEGEND		= ADDITIONAL CONTROL REQ'D	Drawings to conform to the current revision of the following ANSI standards	
= MINUS DRAFT	= PLUS DRAFT	= BRINELL HARDNESS	Y14.3 Multi and sectional view deqs. Y14.5M Dimensioning and tolerancing	
TOLERANCES NOT SPECIFIED	AUTOCAD REL2008 LT	DO NOT SCALE DRAWING FOR DIMENSIONS		
.XX ±		Sheet 2 of 2		SCALE 1:12
.XXX ±				
<<DEG>> ±				
CONFIDENTIAL DISCLOSURE This drawing is the property of POWEREX, INC. of the SCOTT FETZER COMPANY and subject to return on demand. Its contents are confidential and must not be copied or submitted to outside parties for use or examination.				
DRAWN BY	CHECKED BY	APPROVED BY	MFG/MKTG	
AEK	DMS	AEK	RJR	
5/8/12	5/8/12	5/8/12	5/8/12	
MATERIAL N/A				
PART NAME		150 PRODUCTION DRIVE, HARRISON, OHIO 45030 Ph: 888-769-7979 FAX: (513) 367-3125		
DUPLEX CLAW VACUUM		DWG NO	SIZE	
FLOW SCHEMATIC		CVPDT0752A	D	

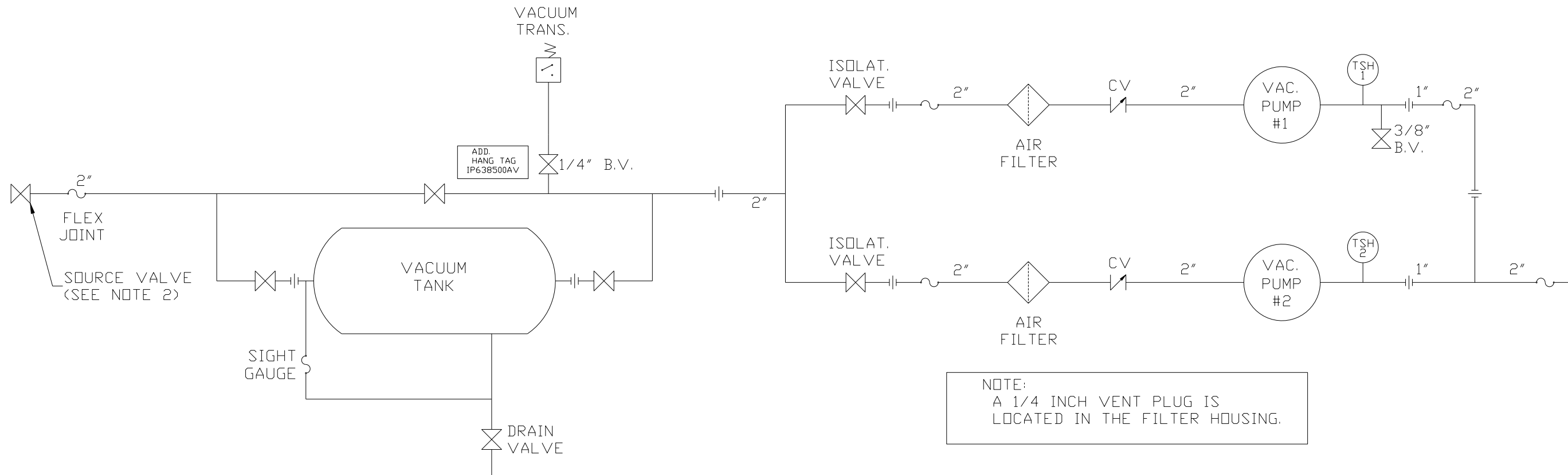
REV	ZONE	REVISION	DATE	ECN	NAME	CHKD
B-1	ALL	RELEASE TO PRODUCTION	5/8/12	22725	AEK	DMS
C-1	ALL	ADDED SIGHT GAUGE	9/19/12	PXEC0019	AEK	DMS
D-1	2 CS	MOVED VAC SWITCH MANIFOLD TO CORRECT LOCATION	12/28/12	22723	AEK	DMS
E-1	ALL	MADE HIGH TEMP STANDARD ON BASIC BUILD	11/6/13	PXEC0030	AEK	DMS
F-1	ALL	CHANGED OUTLET MANIFOLD TO 2"	1/2/15	PXEC0096	AEK	GES
G-1	1 ALL	UPDATED TO PUMP WITH NEMA RATED MOTOR	7/28/16	PXEC0149	AEK	GES



NOTE: SYSTEM DESIGNED IN COMPLIANCE WITH U.S. NFPA '99, LATEST EDITION.

SYMBOL LEGEND ⊖ = MINUS DRAFT ⊕ = PLUS DRAFT .XX ± .XXX ± << DEG >> ±		= ADDITIONAL CONTROL REQ'D = BRINELL HARDNESS		Drawings to conform to the current revision of the following ANSI standards: Y14.3 Multi and sectional view dsgs. Y14.5M Dimensioning and tolerancing
TOLERANCES NOT SPECIFIED AUTOCAD REL2008 LT INCH		DO NOT SCALE DRAWING FOR DIMENSIONS Sheet 1 of 2 SCALE 1:12		
CONFIDENTIAL DISCLOSURE This drawing is the property of POWEREX, INC. of the SCOTT FEITZER COMPANY and subject to return on demand. Its contents are confidential and must not be copied or submitted to outside parties for use or examination.		DRAWN BY AEK	CHECKED BY DMS	APPROVED BY ENGINEERING MFG/MKTG AEK RJR
MATERIAL N/A		DATE 5/8/12	DATE 5/8/12	DATE 5/8/12
PART NAME 7.5HP CLAW VAC 60GAL DUPLEX		 150 PRODUCTION DRIVE, HARRISON, OHIO 45030 Ph: 888-769-7979 FAX: (513) 367-3125		DWG NO CVPDT0752A SIZE D

REV	ZONE	REVISION	DATE	ECN	NAME	CHKD
B-1	ALL	RELEASE TO PRODUCTION	5/8/12	22725	AEK	DMS
C-1	ALL	ADDED SIGHT GAUGE	9/19/12	PXEC0019	AEK	DMS
D-1	2 CS	MOVED VAC SWITCH MANIFOLD TO CORRECT LOCATION	12/28/12	22723	AEK	DMS
E-1	ALL	MADE HIGH TEMP STANDARD ON BASIC BUILD	11/6/13	PXEC0030	AEK	DMS
F-1	ALL	CHANGED OUTLET MANIFOLD TO 2"	1/2/15	PXEC0096	AEK	GES
G-1	1 ALL	UPDATED TO PUMP WITH NEMA RATED MOTOR	7/28/16	PXEC0149	AEK	GES



NOTE:
A 1/4 INCH VENT PLUG IS
LOCATED IN THE FILTER HOUSING.

LEGEND	
TSH 2	TEMP. SWITCH
	AIR FILTER
	BALL VALVE
	VACUUM SWITCH
	CHECK VALVE
	FLEX LINE
	UNION

NOTES:
1) TSH - TEMPERATURE SWITCH HIGH
2) PER NFPA THE SYSTEM WILL REQUIRE A SOURCE VALVE (SUPPLIED BY OTHERS).

SYMBOL LEGEND		= ADDITIONAL CONTROL REQ'D	Drawings to conform to the current revision of the following ANSI standards	
= MINUS DRAFT	= PLUS DRAFT	= BRINELL HARDNESS	Y14.3 Multi and sectional view dgs. Y14.5M Dimensioning and tolerancing	
TOLERANCES NOT SPECIFIED	AUTOCAD REL2008 LT	DO NOT SCALE DRAWING FOR DIMENSIONS		
.XX ±		Sheet 2 of 2		SCALE 1:12
.XXX ±				
<<DEG>> ±				
CONFIDENTIAL DISCLOSURE This drawing is the property of POWEREX, INC. of the SCOTT FETZER COMPANY and subject to return on demand. Its contents are confidential and must not be copied or submitted to outside parties for use or examination.				
DRAWN BY		CHECKED BY	APPROVED BY	
AEK		DMS	AEK RJR	
5/8/12		5/8/12	5/8/12 5/8/12	
MATERIAL N/A				
PART NAME				
DUPLEX CLAW VACUUM				
FLOW SCHEMATIC				
DWG NO			SIZE	
CVPDT0752A			D	