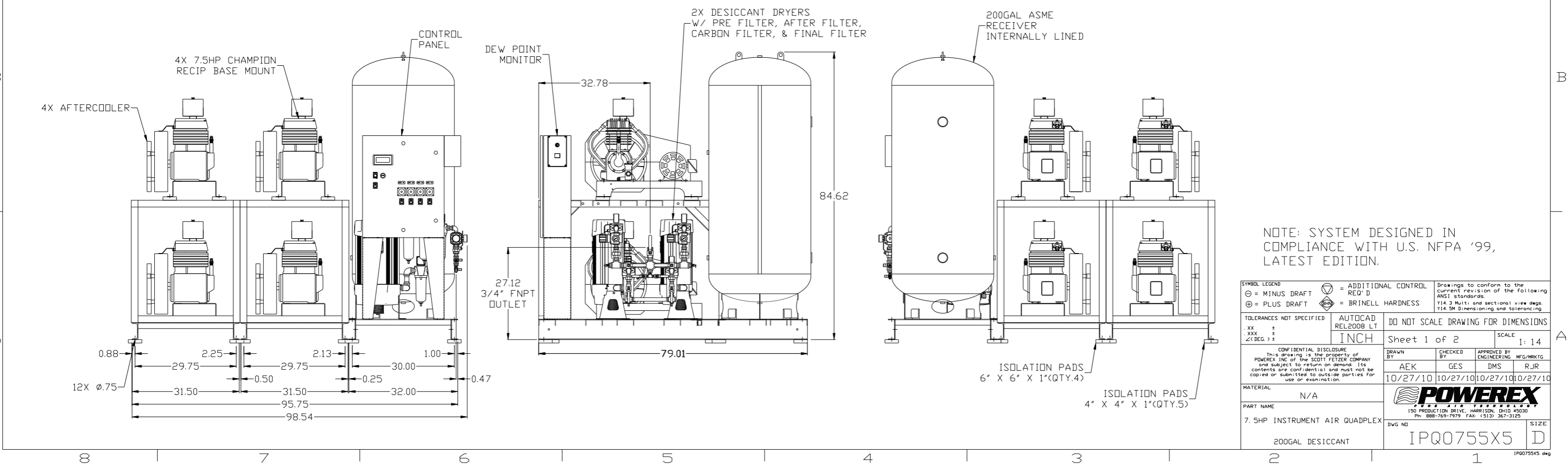
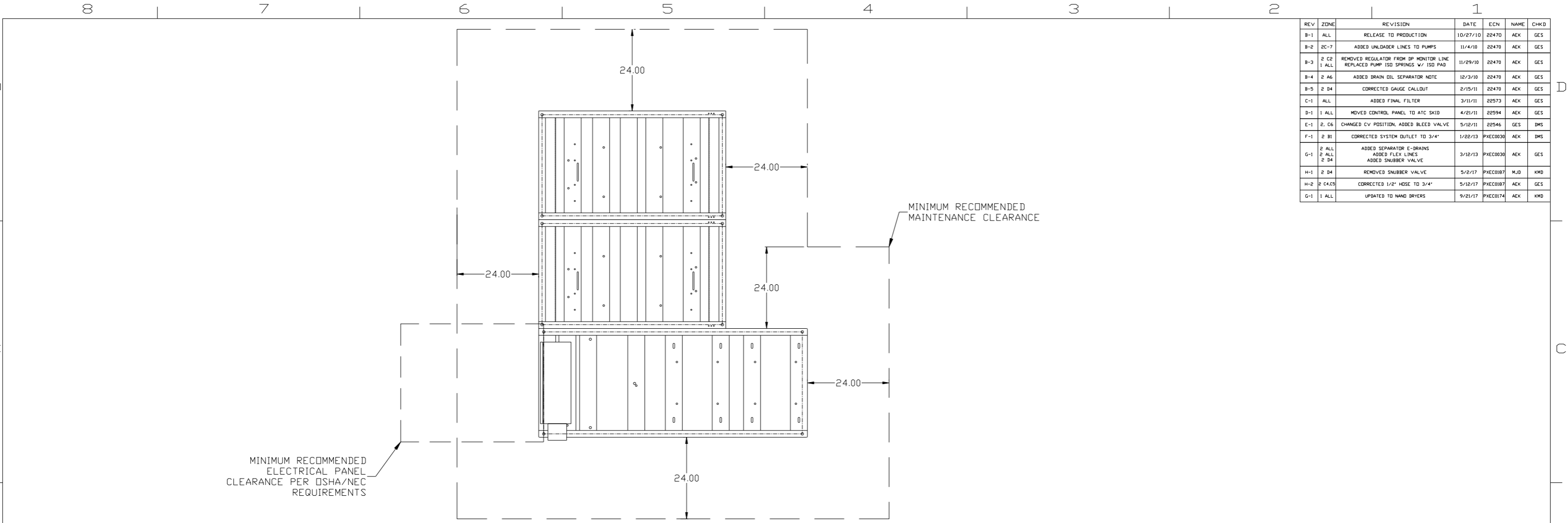


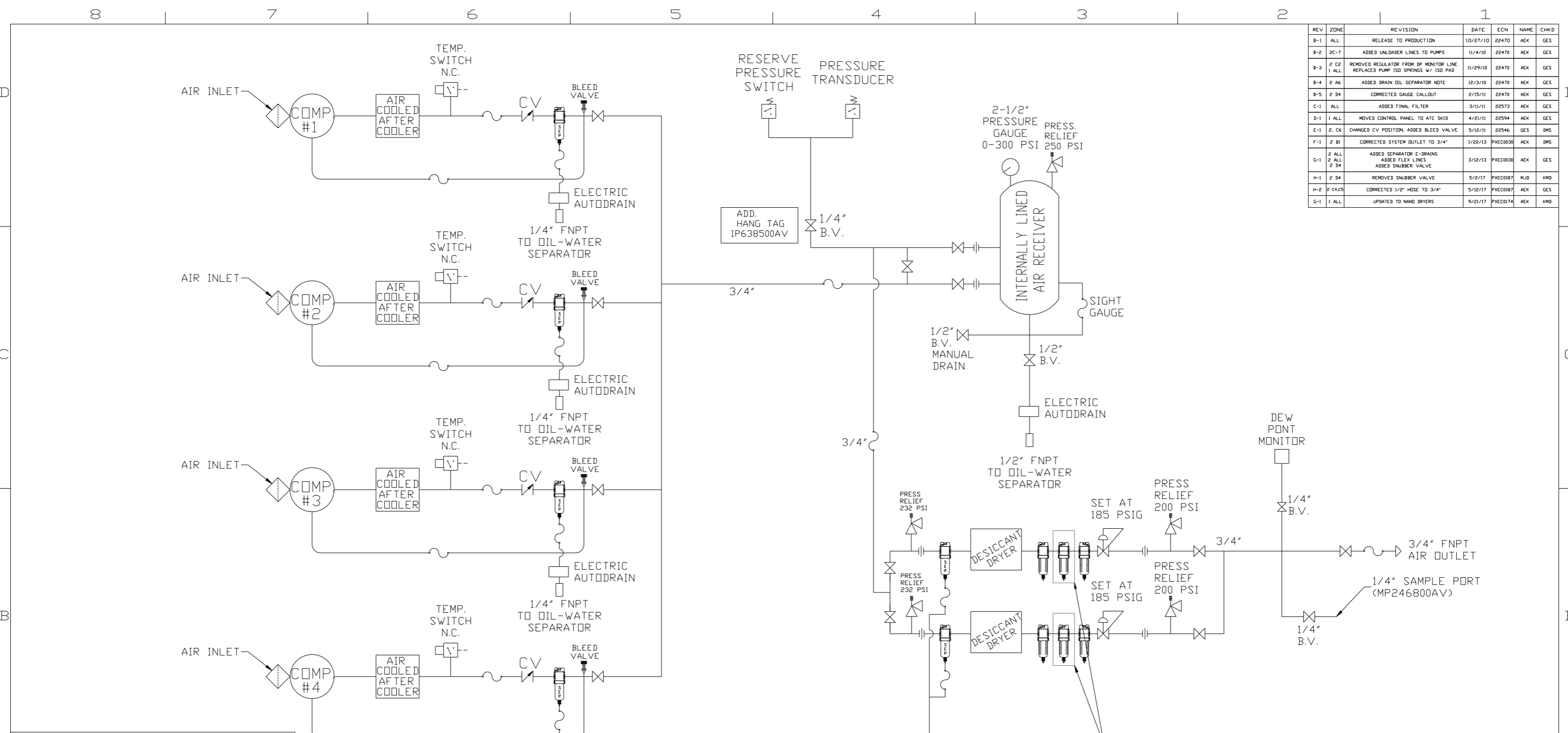
REV	ZONE	REVISION	DATE	ECN	NAME	CHKD
B-1	ALL	RELEASE TO PRODUCTION	10/27/10	22470	AEK	GES
B-2	2C-7	ADDED UNLADDER LINES TO PUMPS	11/4/10	22470	AEK	GES
B-3	2 C2 1 ALL	REMOVED REGULATOR FROM DP MONITOR LINE REPLACED PUMP ISO SPRINGS W/ ISO PAD	11/29/10	22470	AEK	GES
B-4	2 A6	ADDED DRAIN DIL SEPARATOR NDT	12/3/10	22470	AEK	GES
B-5	2 D4	CORRECTED GAUGE CALLOUT	2/15/11	22470	AEK	GES
C-1	ALL	ADDED FINAL FILTER	3/11/11	22573	AEK	GES
D-1	1 ALL	MOVED CONTROL PANEL TO ATC SKID	4/21/11	22594	AEK	GES
E-1	2, C6	CHANGED CV POSITION, ADDED BLEED VALVE	5/12/11	22546	AEK	DMS
F-1	2 B1	CORRECTED SYSTEM OUTLET TO 3/4"	1/22/13	PXEC0030	AEK	DMS
G-1	2 ALL 2 D4	ADDED SEPARATOR E-DRAINS ADDED FLEX LINES ADDED SNUBBER VALVE	3/12/13	PXEC0030	AEK	GES
H-1	2 D4	REMOVED SNUBBER VALVE	5/2/17	PXEC0187	MJD	KMB
H-2	2 C4C5	CORRECTED 1/2" HOSE TO 3/4"	5/12/17	PXEC0187	AEK	GES
G-1	1 ALL	UPDATED TO NANO DRYERS	9/21/17	PXEC0174	AEK	KMB



NOTE: SYSTEM DESIGNED IN COMPLIANCE WITH U.S. NFPA '99, LATEST EDITION.

<b>SYMBOL LEGEND</b> ⊖ = MINUS DRAFT ⊕ = PLUS DRAFT ⊕ = ADDITIONAL CONTROL REQ'D ⊕ = BRINELL HARDNESS		Drawings to conform to the current revision of the following ANSI standards: Y14.3 Multi and sectional view dgs. Y14.5M Dimensioning and tolerancing	
TOLERANCES NOT SPECIFIED .XX ± .XXX ± <math>\angle</math> (DEG) ±		AUTOCAD REL2008 LT <b>INCH</b> DO NOT SCALE DRAWING FOR DIMENSIONS Sheet 1 of 2 SCALE 1:14	
<b>CONFIDENTIAL DISCLOSURE</b> This drawing is the property of POWEREX, INC. of the SCOTT FITZGER COMPANY and subject to return on demand. Its contents are confidential and must not be copied or submitted to outside parties for use or examination.			
DRAWN BY: AEK CHECKED BY: GES 10/27/10		APPROVED BY: ENGINEERING MFG/MKTG: DMS, RJR 10/27/10 <b>POWEREX</b> 150 PRODUCTION DRIVE, HARRISON, OHIO 45030 Ph: 888-769-7979 FAX: (513) 367-3125	
MATERIAL: N/A PART NAME: 7.5HP INSTRUMENT AIR QUADPLEX 200GAL DESICCANT		DWG NO: IPQ0755X5 SIZE: D IPQ0755X5.dwg	

REV	ZONE	REVISION	DATE	ECN	NAME	CHKD
B-1	ALL	RELEASE TO PRODUCTION	10/27/10	22470	AEK	GES
B-2	2C-7	ADDED UNLADDER LINES TO PUMPS	11/4/10	22470	AEK	GES
B-3	2 C2 1 ALL	REMOVED REGULATOR FROM DP MONITOR LINE REPLACED PUMP ISO SPRINGS w/ ISO PAD	11/29/10	22470	AEK	GES
B-4	2 A6	ADDED DRAIN OIL SEPARATOR NOTE	12/3/10	22470	AEK	GES
B-5	2 D4	CORRECTED GAUGE CALLOUT	2/15/11	22470	AEK	GES
C-1	ALL	ADDED FINAL FILTER	3/11/11	22573	AEK	GES
D-1	1 ALL	MOVED CONTROL PANEL TO ATC SKID	4/21/11	22594	AEK	GES
E-1	2, C6	CHANGED CV POSITION, ADDED BLEED VALVE	5/12/11	22546	AEK	DMS
F-1	2 B1	CORRECTED SYSTEM OUTLET TO 3/4"	1/22/13	PKEC0030	GES	DMS
G-1	2 ALL 2 D4	ADDED SEPARATOR E-DRAINS ADDED FLEX LINES ADDED SNUBBER VALVE	3/12/13	PKEC0030	AEK	GES
H-1	2 D4	REMOVED SNUBBER VALVE	5/2/17	PKEC0187	MJD	KMB
H-2	2 C4C5	CORRECTED 1/2" HOSE TO 3/4"	5/12/17	PKEC0187	AEK	GES
G-1	1 ALL	UPDATED TO HANI DRYERS	9/21/17	PKEC0174	AEK	KMB



**LEGEND**

	RELIEF VALVE		PRESSURE SWITCH
	INTAKE FILTER		REGULATOR
	AIR FILTER		SEPARATOR
	CARBON FILTER		CHECK VALVE
	BALL VALVE		FLEX LINE
	UNION		HIGH TEMP SWITCH

**NOTES:**

- 1) IF RESERVE COMPRESSOR IS ENERGIZED ALARM WILL OCCUR.
- 2) PIPING TO THE INLET BY OTHERS AND TO BE PER NFPA99
- 3) INSTRUMENTS DOWN STREAM OF SOURCE VALVE TO BE SUPPLIED BY OTHERS.
- 4) ROUTE ALL DRAINS TO AN OIL-WATER SEPARATOR, & DISPOSE OF ANY OIL IN ACCORDANCE WITH LOCAL, STATE, AND FEDERAL REGULATIONS.

SYMBOL LEGEND		= ADDITIONAL CONTROL REQ'D		Drawings to conform to the current revision of the following ANSI standards	
= MINUS DRAFT		= BRINELL HARDNESS		Y14.3 Multi and sectional view dsgs. Y14.5M Dimensioning and tolerancing	
TOLERANCES NOT SPECIFIED		AUTOCAD REL2008 LT		DO NOT SCALE DRAWING FOR DIMENSIONS	
.XX ±		INCH		Sheet 2 of 2	
.XXX ±				SCALE 1:14	
<DEG. ±					
CONFIDENTIAL DISCLOSURE This drawing is the property of POWEREX, INC. of the SCOTT FETZER COMPANY and subject to return on demand. Its contents are confidential and must not be copied or submitted to outside parties for use or examination.					
DRAWN BY		CHECKED BY		APPROVED BY	
AEK		GES		DMS RJR	
10/27/10		10/27/10		10/27/10 10/27/10	
MATERIAL N/A					
PART NAME					
QUADPLEX INSTRUMENT AIR					
FLOW SCHEMATIC					
DWG NO				SIZE	
IPQ0755X5				D	