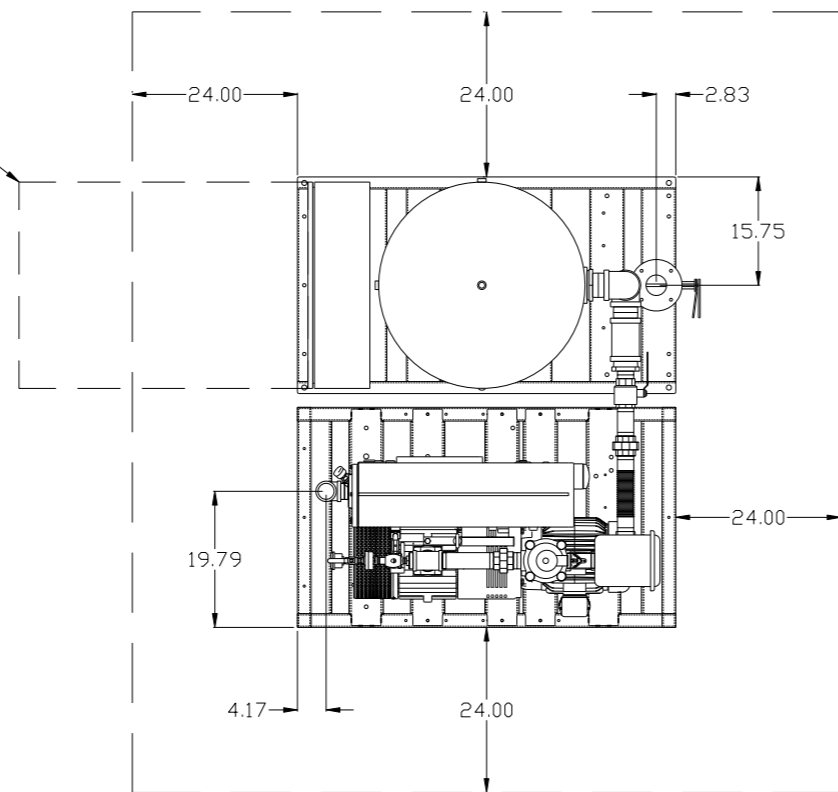
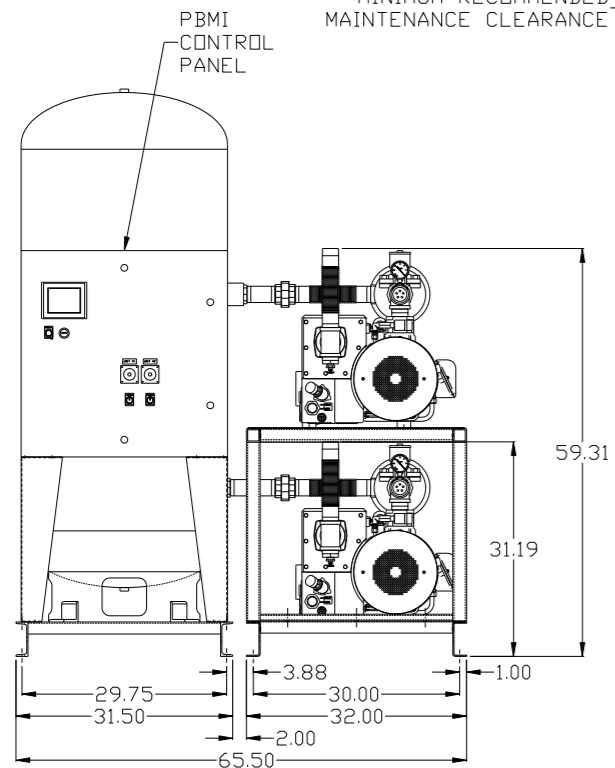


REV	ZONE	REVISION	DATE	ECN	NAME	CHKD
B-1	ALL	RELEASE TO PRODUCTION	01/02/13	PXEC003	GES	DMS
C-1	1 ALL	ADDED 2" CLEARANCE TO PXMI BUILD SHEETS	7/10/14	PXEC004	AEK	GES
D-1	1 ALL	UPDATED TO RA SERIES PUMP	10/20/16	PXEC014B	AEK	GES

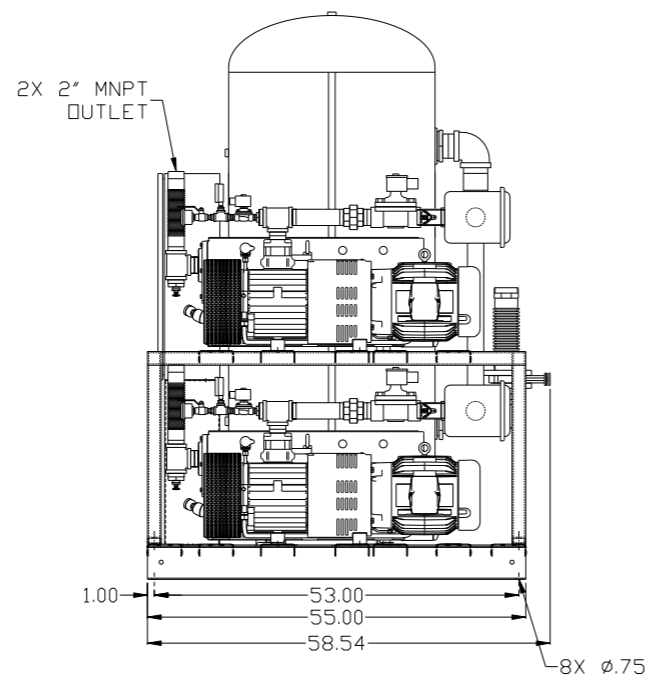
MINIMUM RECOMMENDED ELECTRICAL PANEL CLEARANCE PER OSHA/NEC REQUIREMENTS



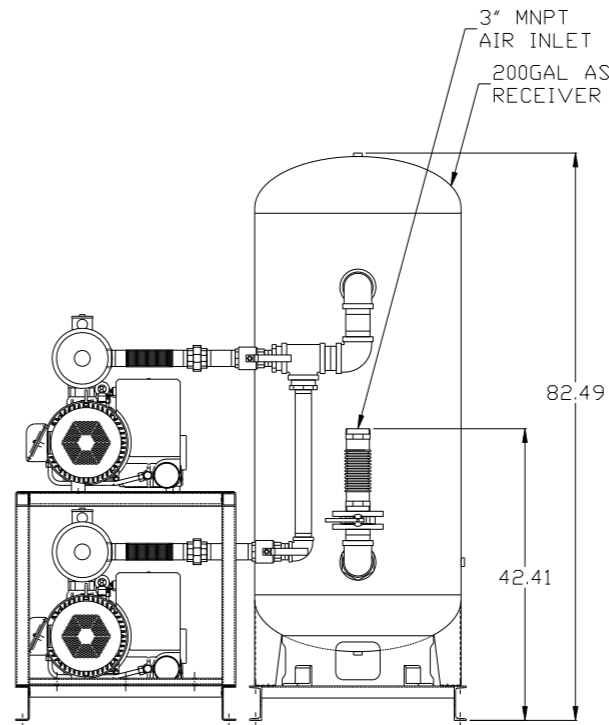
MINIMUM RECOMMENDED MAINTENANCE CLEARANCE



2X 2" MNPT OUTLET

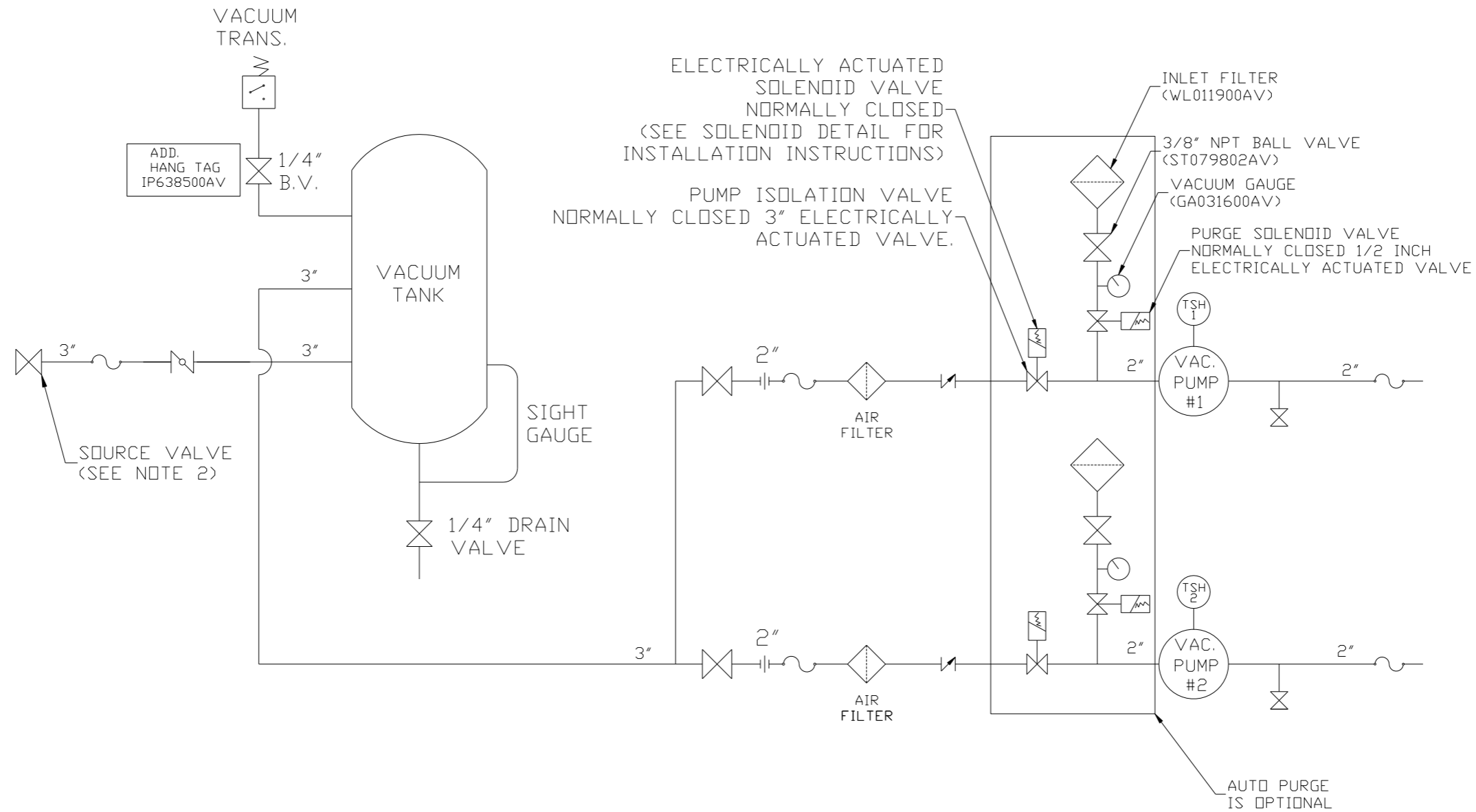


3" MNPT AIR INLET
200GAL ASME RECEIVER



SYMBOL LEGEND		= ADDITIONAL CONTROL REQ'D		Drawings to conform to the current revision of the following ANSI standards	
⊖	MINUS DRAFT	⊕	PLUS DRAFT	⊖	BRINELL HARDNESS
TOLERANCES NOT SPECIFIED		AUTOCAD REL2008 LT		DO NOT SCALE DRAWING FOR DIMENSIONS	
.XX ±		INCH		Sheet 1 of 2	SCALE 1:14
.XXX ±					
<DEG> ±					
CONFIDENTIAL DISCLOSURE: This drawing is the property of POWEREX, INC. of the SCOTT FEITZER COMPANY and subject to return on demand. Its contents are confidential and must not be copied or submitted to outside parties for use or examination.					
DRAWN BY		CHECKED BY	APPROVED BY		ENGINEERING MFG/MRKTG
GES		DMS	JBC	CT	
01/02/13		01/02/13	01/02/13	01/02/13	
MATERIAL		N/A		 150 PRODUCTION DRIVE, HARRISON, OHIO 45030 Ph 888-769-7979 FAX (513) 367-3125	
PART NAME		10HP LAB VACUUM		SIZE	
200G DUPLEX		LVPD1005		D	

REV	ZONE	REVISION	DATE	ECN	NAME	CHKD
B-1	ALL	RELEASE TO PRODUCTION	01/02/13	PXEC0003	GES	DMS
C-1	1 ALL	ADDED 2" CLEARANCE TO PXMI BUILD SHEETS	7/10/14	PXEC0040	AEK	GES
D-1	1 ALL	UPDATED TO RA SERIES PUMP	10/20/16	PXEC0148	AEK	GES



ELECTRICALLY ACTUATED SOLENOID VALVE NORMALLY CLOSED (SEE SOLENOID DETAIL FOR INSTALLATION INSTRUCTIONS)

PUMP ISOLATION VALVE NORMALLY CLOSED 3" ELECTRICALLY ACTUATED VALVE.

INLET FILTER (WL011900AV)

3/8" NPT BALL VALVE (ST079802AV)

VACUUM GAUGE (GA031600AV)

PURGE SOLENOID VALVE NORMALLY CLOSED 1/2 INCH ELECTRICALLY ACTUATED VALVE

LEGEND	
	TEMP. SWITCH
	BUTTERFLY VALVE
	AIR FILTER
	BALL VALVE
	VACUUM SWITCH
	CHECK VALVE
	FLEX LINE
	UNION

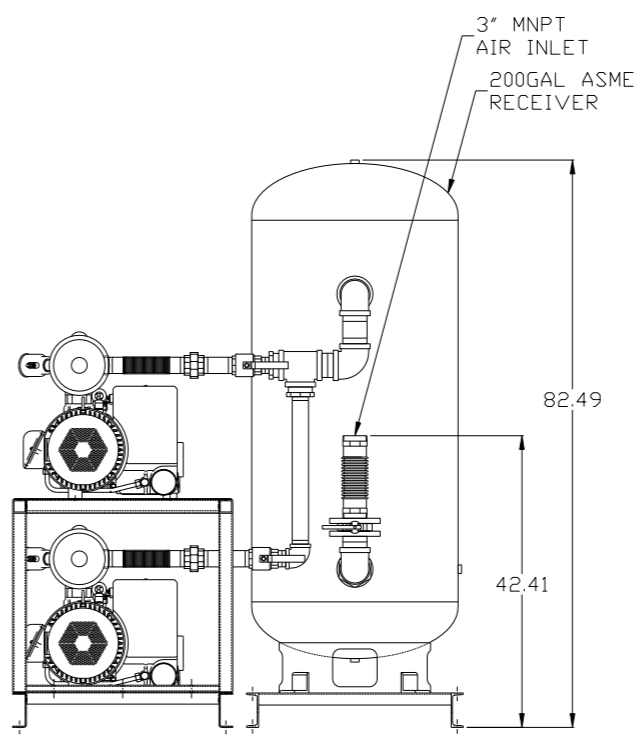
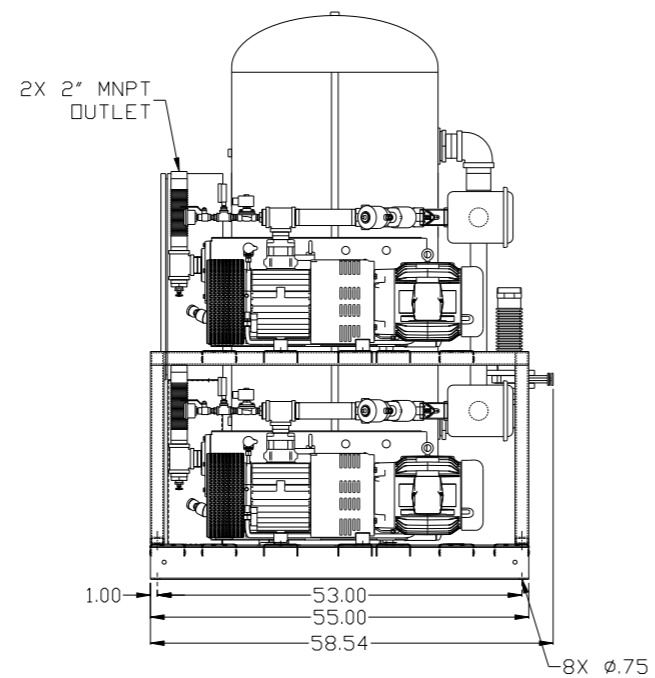
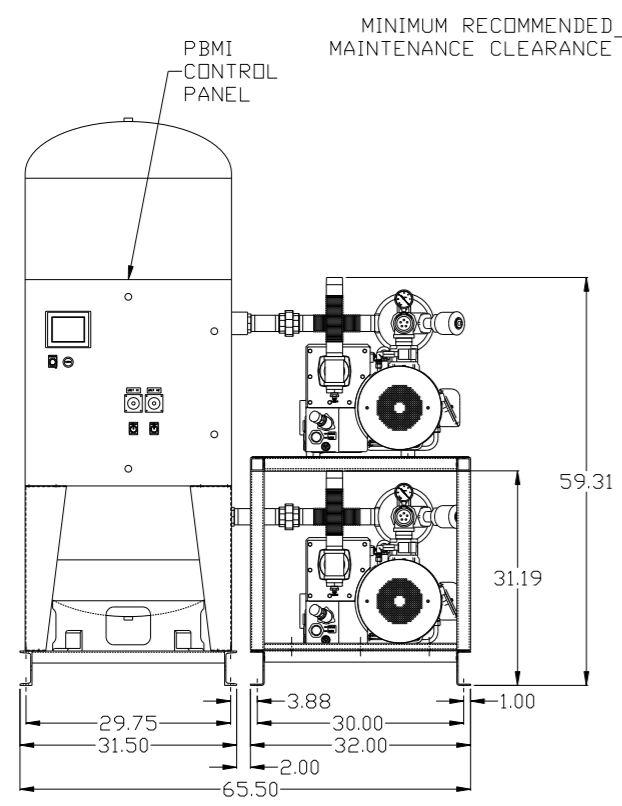
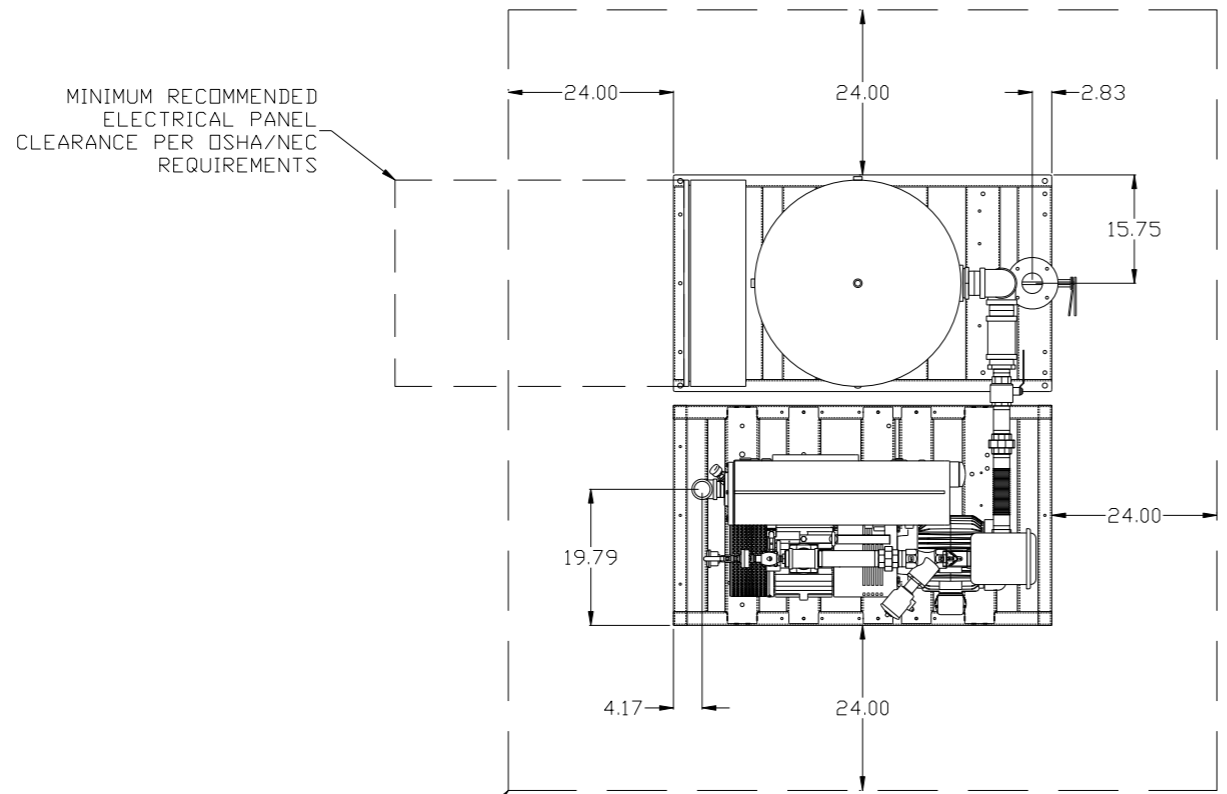
NOTE:
A 1/4 INCH VENT PLUG IS LOCATED IN THE FILTER HOUSING.

NOTE:
1) TSH - TEMPERATURE SWITCH HIGH
2) PER NFPA THE SYSTEM WILL REQUIRE A SOURCE VALVE (SUPPLIED BY OTHERS).

SYMBOL LEGEND			ADDITIONAL CONTROL REQ'D	Drawings to conform to the current revision of the following ANSI standards: Y14.3 Multi and sectional view dgs. Y14.5M Dimensioning and tolerancing
	MINUS DRAFT		BRINELL HARDNESS	
TOLERANCES NOT SPECIFIED		AUTOCAD REL2008 LT		DO NOT SCALE DRAWING FOR DIMENSIONS
.XX ±		INCH		SCALE 1:14
.XXX ±		Sheet 1 of 2		
<<DEG>> ±		DRAWN BY: GES		CHECKED BY: DMS
CONFIDENTIAL DISCLOSURE		APPROVED BY: JBC		ENGINEERING: MFG/MRKTG
This drawing is the property of POWEREX, INC. of the SCOTT FETZER COMPANY and subject to return on demand. Its contents are confidential and must not be copied or submitted to outside parties for use or examination.		01/02/13		01/02/13 01/02/13 01/02/13
MATERIAL: N/A				
PART NAME: DUPLEX VACUUM PACKAGE		DWG NO: LVPD1005		SIZE: D
FLOW SCHEMATIC				LVPD1005.dwg

8 7 6 5 4 3 2 1

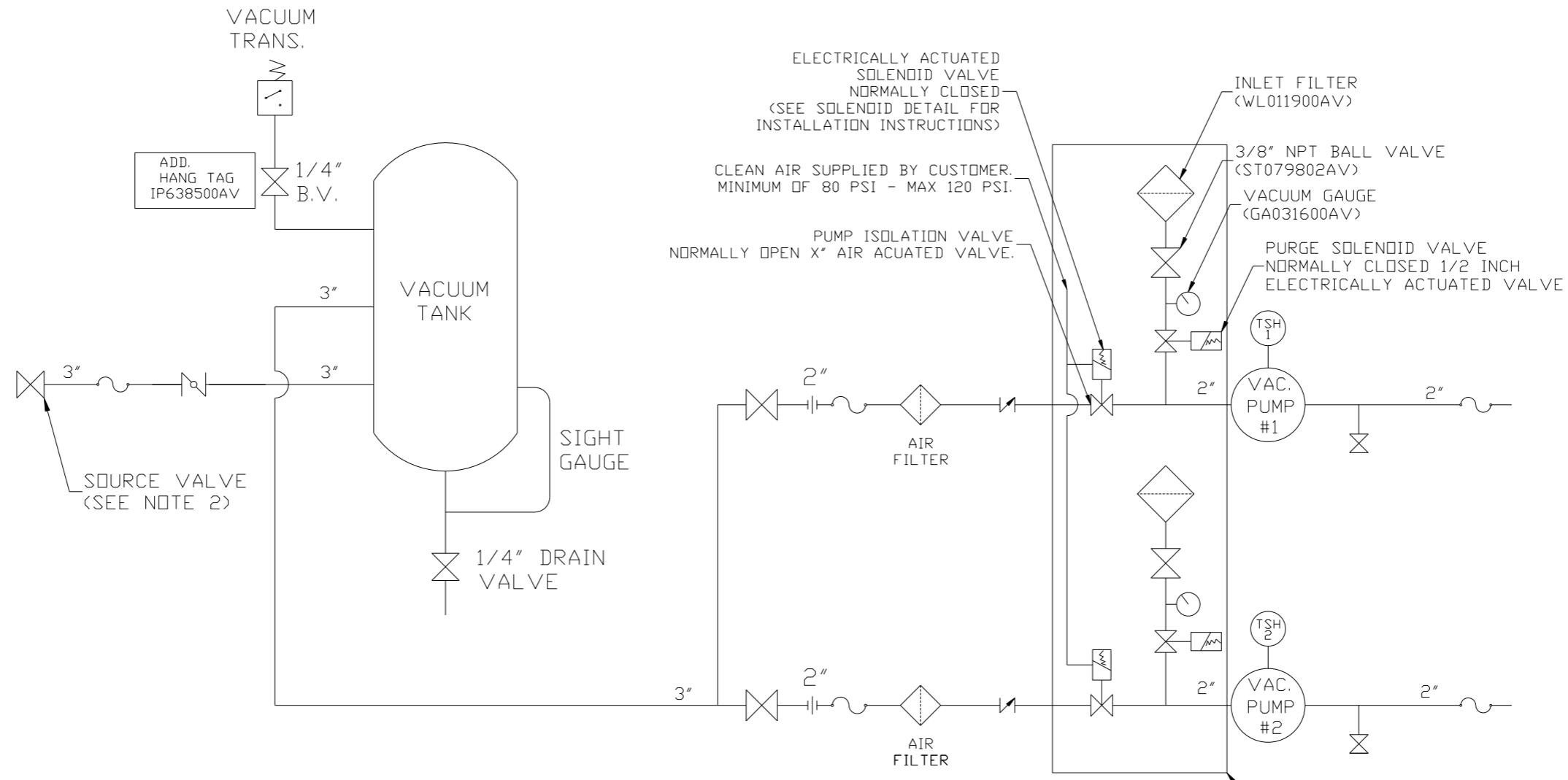
REV	ZONE	REVISION	DATE	ECN	NAME	CHKD
B-1	ALL	RELEASE TO PRODUCTION	01/02/13	PXEC003	GES	DMS
C-1	1 ALL	ADDED 2" CLEARANCE TO PXMI BUILD SHEETS	7/10/14	PXEC004	AEK	GES
D-1	1 ALL	UPDATED TO RA SERIES PUMP	10/20/16	PXEC014B	AEK	GES



SYMBOL LEGEND ⊖ = MINUS DRAFT ⊕ = PLUS DRAFT .XX ± .XXX ± \angle(DEG) ±		= ADDITIONAL CONTROL REQ'D = BRINELL HARDNESS		Drawings to conform to the current revision of the following ANSI standards: Y14.3 Multi and sectional view dgs. Y14.5M Dimensioning and tolerancing	
TOLERANCES NOT SPECIFIED .XX ± .XXX ± \angle(DEG) ±		AUTOCAD REL2008 LT INCH		DO NOT SCALE DRAWING FOR DIMENSIONS Sheet 1 of 2 SCALE 1:14	
CONFIDENTIAL DISCLOSURE This drawing is the property of POWEREX, INC. of the SCOTT FEITZER COMPANY and subject to return on demand. Its contents are confidential and must not be copied or submitted to outside parties for use or examination.					
DRAWN BY GES		CHECKED BY DMS		APPROVED BY JBC CT	
DATE 01/02/13		DATE 01/02/13		DATE 01/02/13 01/02/13	
MATERIAL N/A					
PART NAME 10HP LAB VACUUM 200G DUPLEX				SIZE D	
DWG NO LVPD1005				LVPD1005.dwg	

8 7 6 5 4 3 2 1

REV	ZONE	REVISION	DATE	ECN	NAME	CHKD
B-1	ALL	RELEASE TO PRODUCTION	01/02/13	PXEC0003	GES	DMS
C-1	1 ALL	ADDED 2" CLEARANCE TO PXMI BUILD SHEETS	7/10/14	PXEC0040	AEK	GES
D-1	1 ALL	UPDATED TO RA SERIES PUMP	10/20/16	PXEC0148	AEK	GES

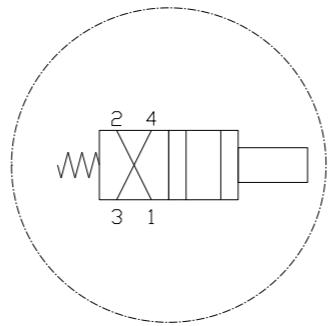


NOTE:
A 1/4 INCH VENT PLUG IS LOCATED IN THE FILTER HOUSING.

AUTO PURGE IS OPTIONAL

LEGEND

	TEMP. SWITCH		VACUUM SWITCH
	BUTTERFLY VALVE		CHECK VALVE
	AIR FILTER		FLEX LINE
	BALL VALVE		UNION



SOLENOID DETAIL:
1) VALVE - INPUT #1
2) MUFFLER - INPUT #2
3) SUPPLY AIR - INPUT #4

NOTE:
1) TSH - TEMPERATURE SWITCH HIGH
2) PER NFPA THE SYSTEM WILL REQUIRE A SOURCE VALVE (SUPPLIED BY OTHERS).

SYMBOL LEGEND			ADDITIONAL CONTROL REQ'D	Drawings to conform to the current revision of the following ANSI standards	
	MINUS DRAFT		BRINELL HARDNESS	Y14.3 Multi and sectional view dgs. Y14.5M Dimensioning and tolerancing	
TOLERANCES NOT SPECIFIED		AUTOCAD REL2008 LT		DO NOT SCALE DRAWING FOR DIMENSIONS	
.XX ±		INCH		Sheet 1 of 2	SCALE 1:14
CONFIDENTIAL DISCLOSURE This drawing is the property of POWEREX, INC. of the SCOTT FETZER COMPANY and subject to return on demand. Its contents are confidential and must not be copied or submitted to outside parties for use or examination.					
DRAWN BY	CHECKED BY	APPROVED BY		MFG/MRKTG	
GES	DMS	JBC	CT		
01/02/13	01/02/13	01/02/13	01/02/13		
MATERIAL		N/A			
PART NAME		DUPLIX VACUUM PACKAGE			
FLOW SCHEMATIC		DWG NO		SIZE	
		LVPD1005		D	

REV	ZONE	REVISION	DATE	ECN	NAME	CHKD
B-1	ALL	RELEASE TO PRODUCTION	01/02/13	PXEC0003	GES	DMS
C-1	1 ALL	ADDED 2" CLEARANCE TO PXMI BUILD SHEETS	7/10/14	PXEC0040	AEK	GES
D-1	1 ALL	UPDATED TO RA SERIES PUMP	10/20/16	PXEC0148	AEK	GES

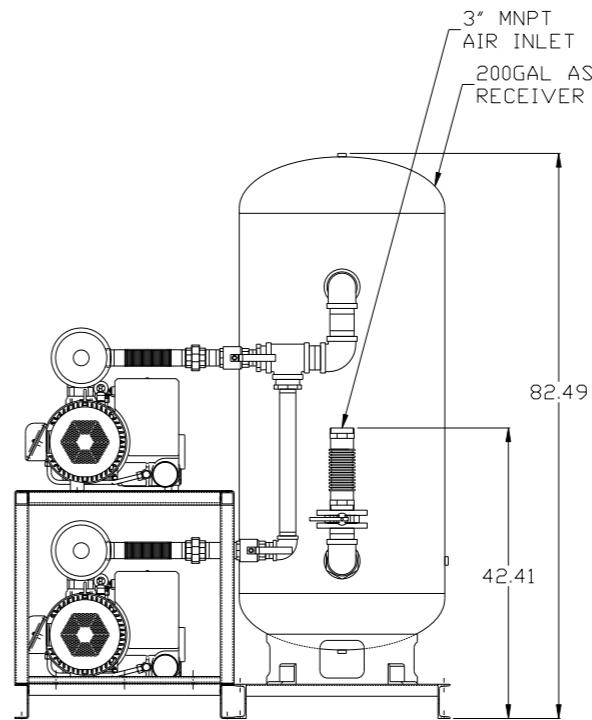
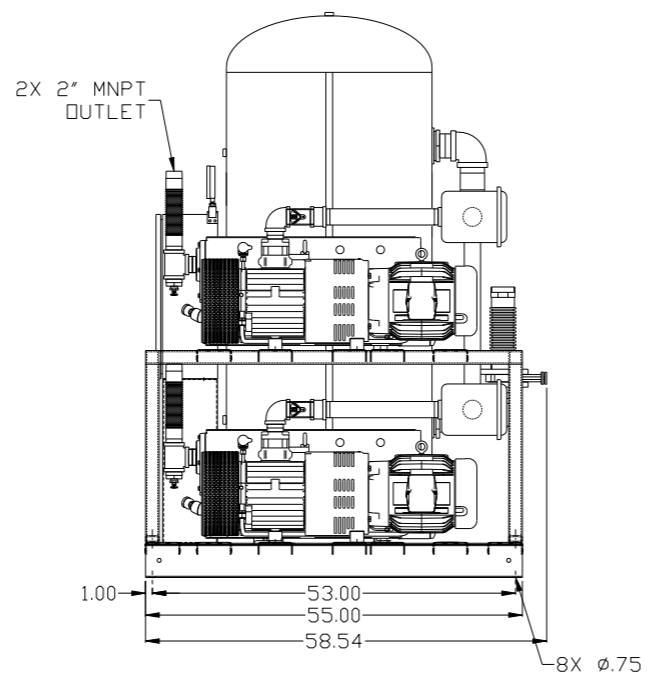
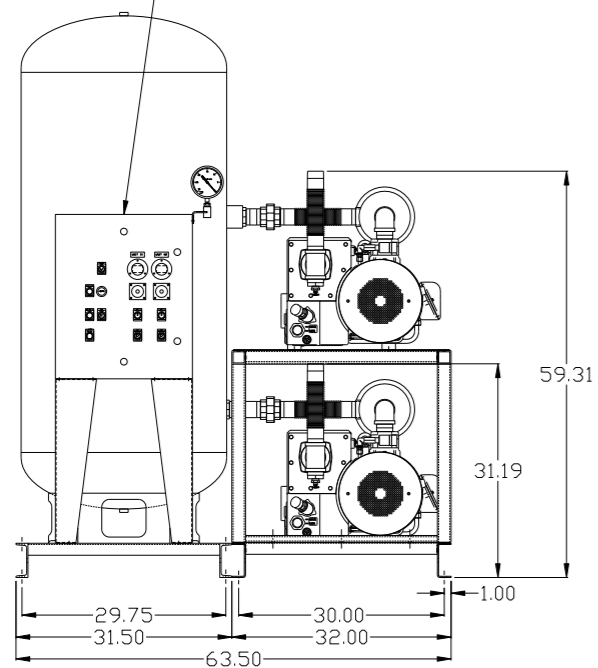
MINIMUM RECOMMENDED ELECTRICAL PANEL CLEARANCE PER OSHA/NEC REQUIREMENTS

MINIMUM RECOMMENDED MAINTENANCE CLEARANCE

CONTROL PANEL

2X 2" MNPT OUTLET

3" MNPT AIR INLET
200GAL ASME RECEIVER



SYMBOL LEGEND
 ⊖ = MINUS DRAFT ⊕ = PLUS DRAFT
 ⊕ = ADDITIONAL CONTROL REQ'D
 HRC = BRINELL HARDNESS

TOLERANCES NOT SPECIFIED
 .XX ±
 .XXX ±
 << (DEG.) ±

AUTOCAD REL2008 LT
 INCH

DO NOT SCALE DRAWING FOR DIMENSIONS
 Sheet 1 of 2
 SCALE 1:14

CONFIDENTIAL DISCLOSURE
 This drawing is the property of POWEREX, INC. of the SCOTT FETZER COMPANY and subject to return on demand. Its contents are confidential and must not be copied or submitted to outside parties for use or examination.

DRAWN BY	CHECKED BY	APPROVED BY	ENGINEERING	MFG/MRKTG
GES	DMS	JBC	CT	
01/02/13	01/02/13	01/02/13	01/02/13	

MATERIAL: N/A

PART NAME: 10HP LAB VACUUM 200G DUPLEX

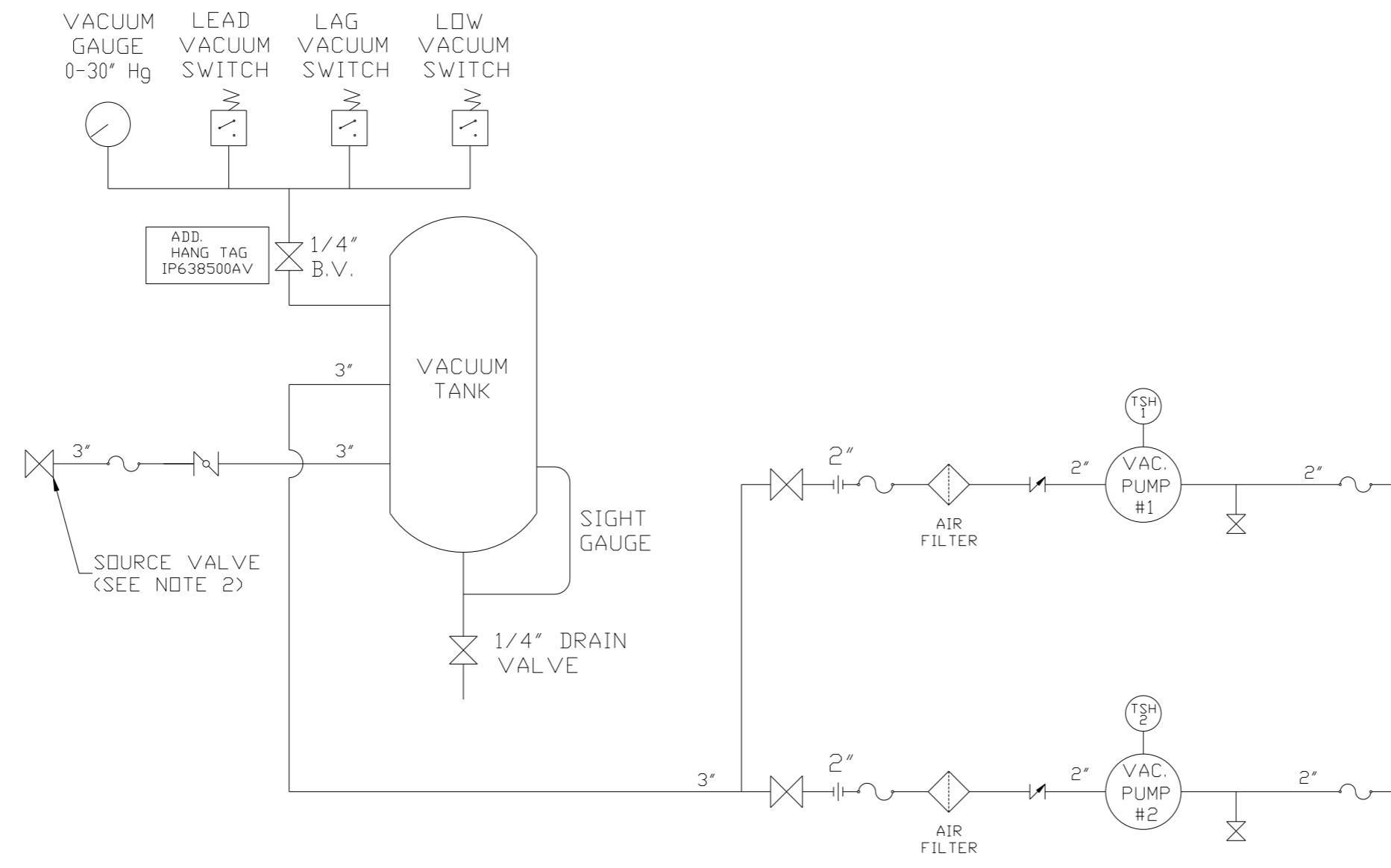
DWG NO: LVPD1005

SIZE: D

POWEREX
 150 PRODUCTION DRIVE, HARRISON, OHIO 45030
 Ph: 888-769-7979 FAX: (513) 367-3125

LVPD1005.dwg

REV	ZONE	REVISION	DATE	ECN	NAME	CHKD
B-1	ALL	RELEASE TO PRODUCTION	01/02/13	PXEC003	GES	DMS
C-1	1 ALL	ADDED 2" CLEARANCE TO PXMI BUILD SHEETS	7/10/14	PXEC0040	AEK	GES
D-1	1 ALL	UPDATED TO RA SERIES PUMP	10/20/16	PXEC0148	AEK	GES



NOTE:
A 1/4 INCH VENT PLUG IS
LOCATED IN THE FILTER HOUSING.

LEGEND

	TEMP. SWITCH		VACUUM SWITCH
	BUTTERFLY VALVE		CHECK VALVE
	AIR FILTER		FLEX LINE
	BALL VALVE		UNION

NOTE:
1) TSH - TEMPERATURE SWITCH HIGH
2) PER NFPA THE SYSTEM WILL REQUIRE A SOURCE VALVE (SUPPLIED BY OTHERS).

SYMBOL LEGEND			= ADDITIONAL CONTROL REQ'D		Drawings to conform to the current revision of the following ANSI standards: Y14.3 Multi and sectional view dgs. Y14.5M Dimensioning and tolerancing
	= MINUS DRAFT		= BRINELL HARDNESS		
TOLERANCES NOT SPECIFIED		AUTOCAD REL2008 LT	DO NOT SCALE DRAWING FOR DIMENSIONS		
.XX ±		INCH	Sheet 1 of 2	SCALE 1:14	
CONFIDENTIAL DISCLOSURE This drawing is the property of POWEREX, INC. of the SCOTT FETZER COMPANY and subject to return on demand. Its contents are confidential and must not be copied or submitted to outside parties for use or examination.		DRAWN BY GES	CHECKED BY DMS	APPROVED BY ENGINEERING JBC	MFG/MKTG CT
MATERIAL N/A		01/02/13	01/02/13	01/02/13	01/02/13
PART NAME DUPLEX VACUUM PACKAGE				SIZE D	
FLOW SCHEMATIC		DWG NO LVPD1005		LVPD1005.dwg	