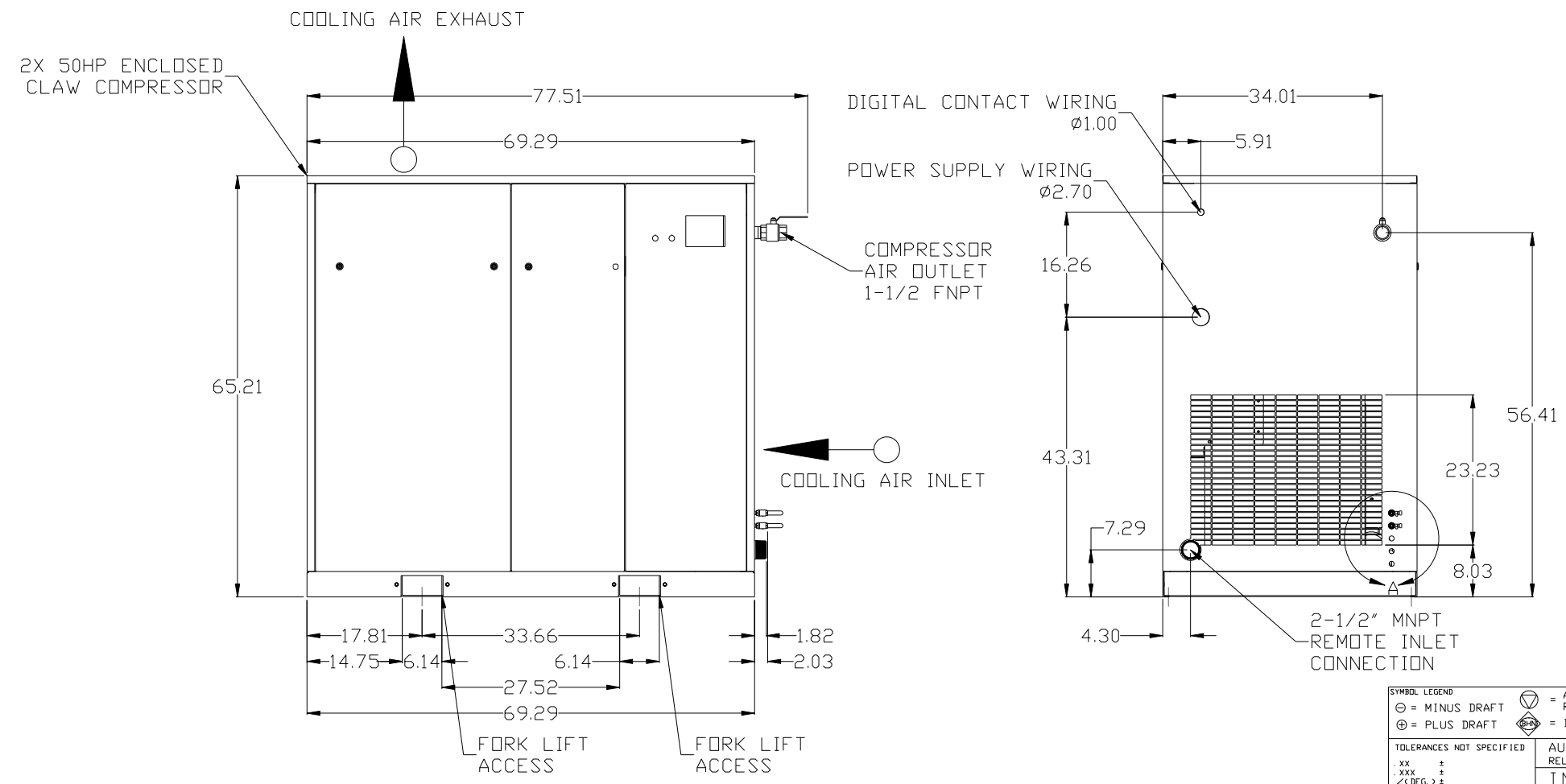
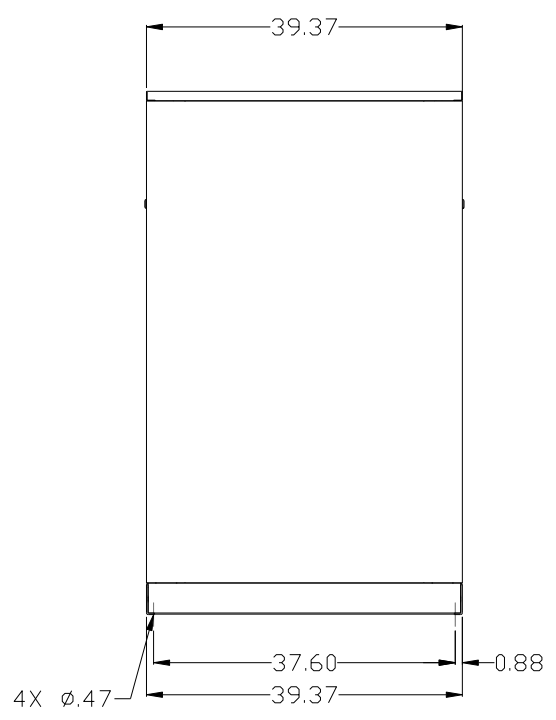
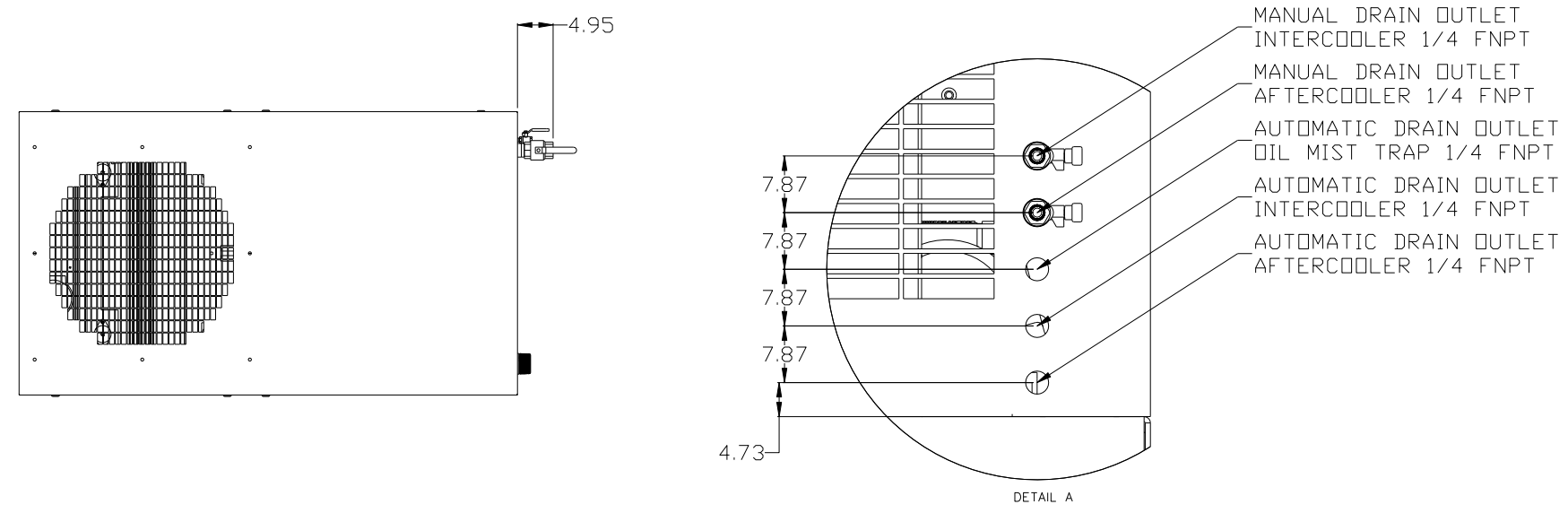


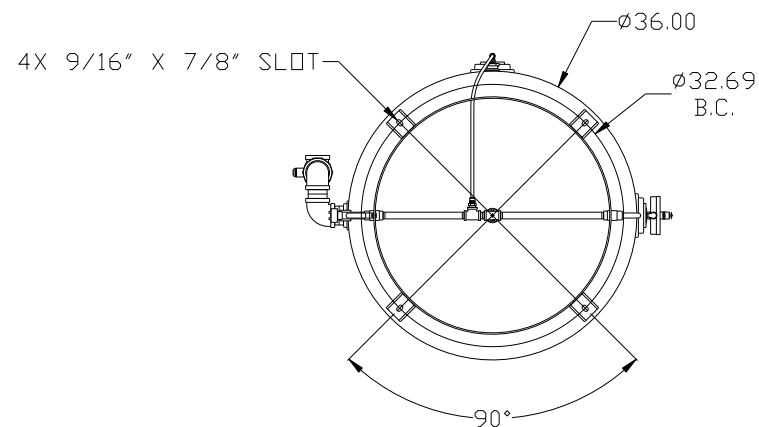
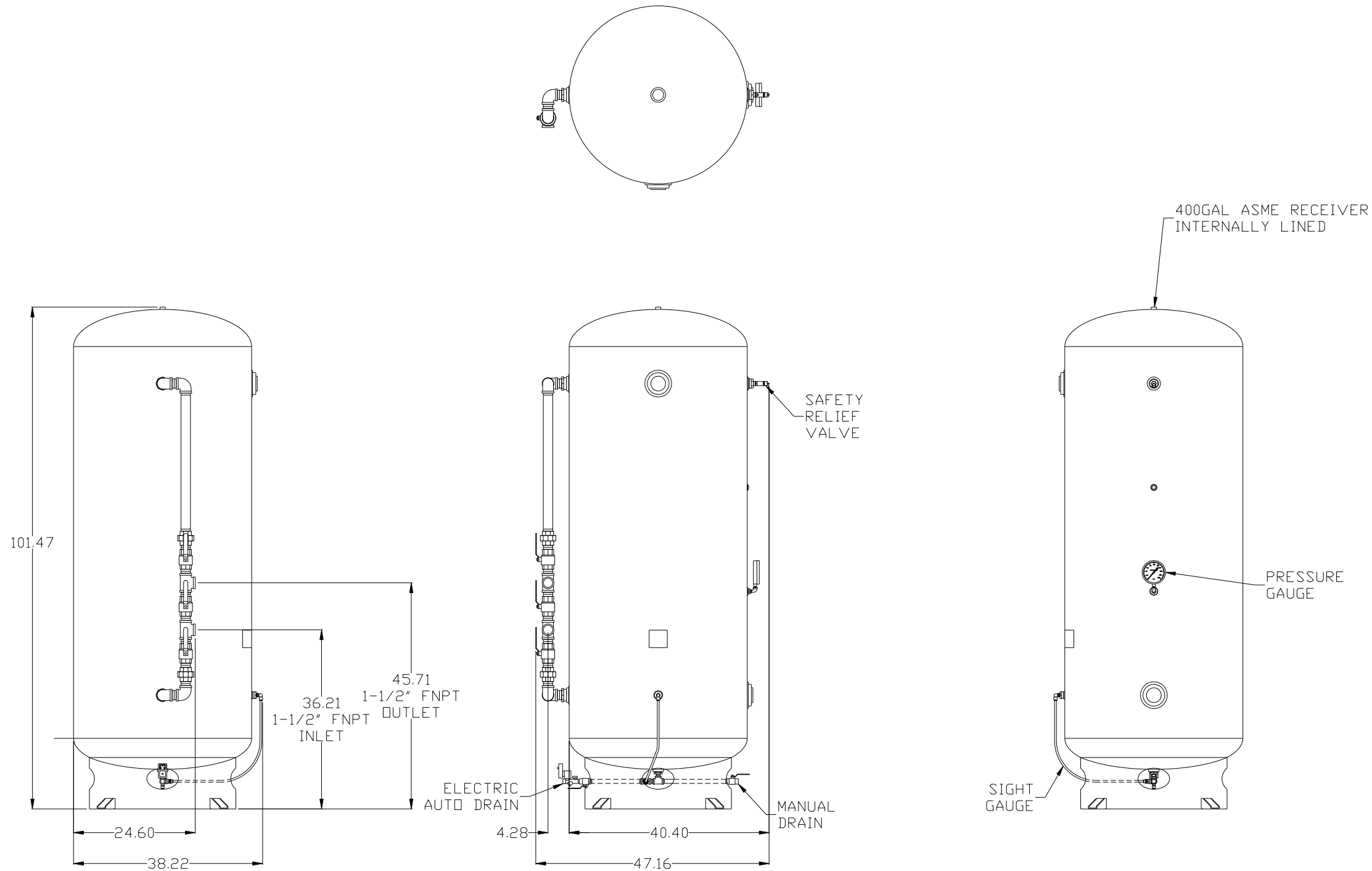
REV	ZONE	REVISION	DATE	ECN	NAME	CHKD
B-1	ALL	RELEASE TO PRODUCTION	2/3/16	PKEC014	MJD	AEK
C-1	35 ALL	UPDATED TO MAND NDL DRYERS	8/10/17	PKEC0174	AEK	GES
D-1	ALL	ADDED INDIVIDUAL COMPONENT WEIGHTS	4/30/18	PKEC0229	GES	DMS



ENCLOSURE WEIGHT EACH: 2940 LBS

SYMBOL LEGEND		= ADDITIONAL CONTROL REQ'D		Drawings to conform to the current revision of the following ANSI standards:	
⊖	MINUS DRAFT	⊕	PLUS DRAFT	⊕	BRINELL HARDNESS
TOLERANCES NOT SPECIFIED		AUTOCAD REL2014 LT		DO NOT SCALE DRAWING FOR DIMENSIONS	
.XX	±	INCH		Sheet 1 of 5	
.XXX	±			SCALE 1:12	
<<DEG>	±				
CONFIDENTIAL DISCLOSURE					
This drawing is the property of POWEREX, INC. or the SCOTT FEITZER COMPANY and subject to return on demand. Its contents are confidential and must not be copied or submitted to outside parties for use or examination.					
MATERIAL		DRAWN BY		APPROVED BY	
N/A		MJD		AEK	
PART NAME		CHECKED BY		ENGINEERING	
CLAW ENCLOSED COMPRESSOR DUPLEX		2/3/16		JAA	
400GAL DUAL DESSICANT PACKAGE		2/3/16		CT	
DWG NO		MATERIAL		SIZE	
MDRC0507		N/A		D	

REV	ZONE	REVISION	DATE	ECN	NAME	CHKD
B-1	ALL	RELEASE TO PRODUCTION	2/3/16	PKEC014	MJD	AEK
C-1	35 ALL	UPDATED TO MAND NDL DRYERS	8/10/17	PKEC0174	AEK	GES
D-1	ALL	ADDED INDIVIDUAL COMPONENT WEIGHTS	4/30/18	PKEC0289	GES	DMS

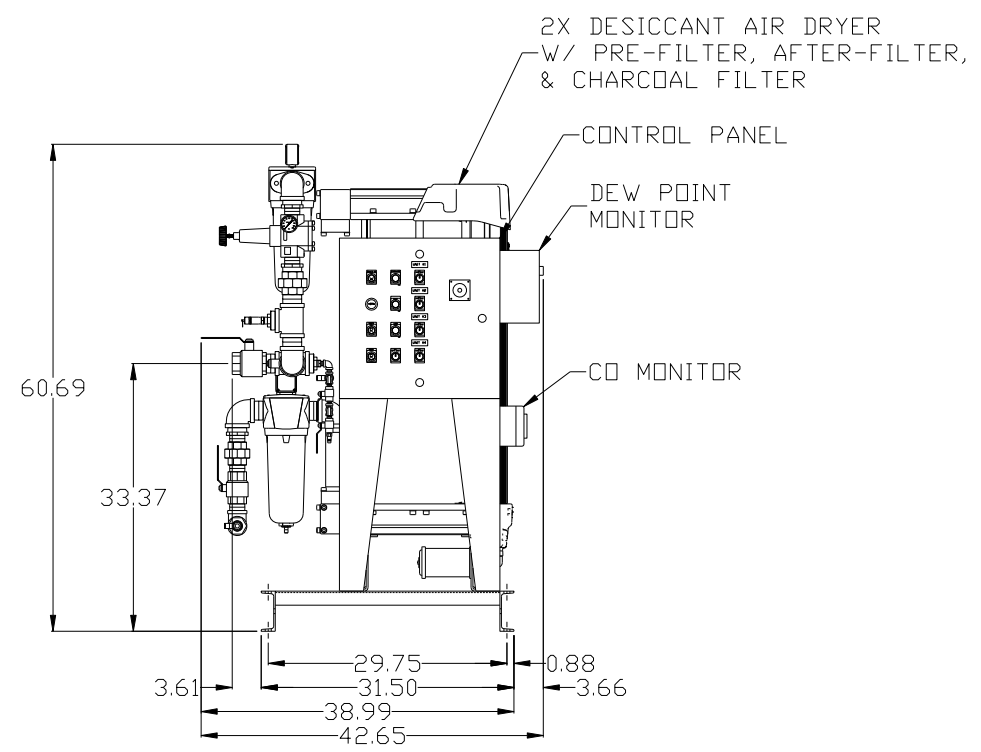
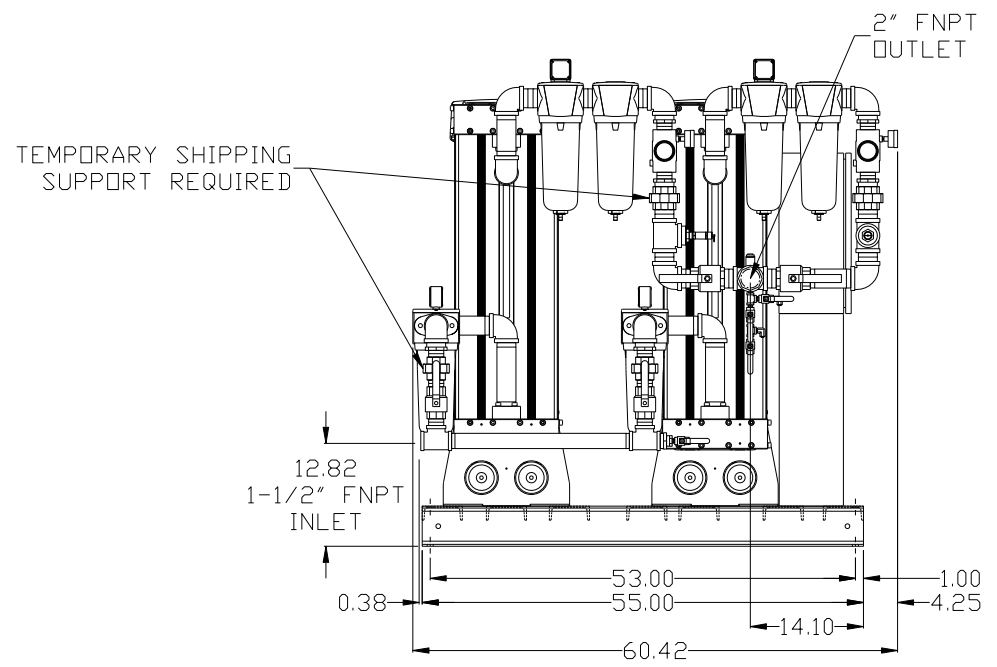
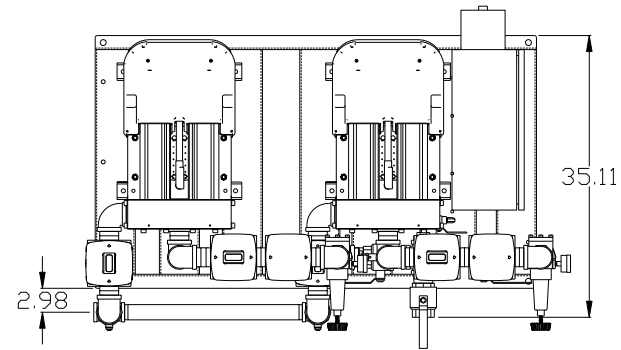


400 GALLON TANK WEIGHT: 740 LBS

SYMBOL LEGEND ⊖ = MINUS DRAFT ⊕ = PLUS DRAFT \angle = ANGLE ∇ = ADDITIONAL CONTROL REQ'D HRC = BRINELL HARDNESS		Drawings to conform to the current revision of the following ANSI standards: Y14.3 Multi and sectional view dgs. Y14.5M Dimensioning and tolerancing	
TOLERANCES NOT SPECIFIED .XX ± .XXX ± \angle (DEG.) ±		AUTOCAD REL2014 LT INCH	DO NOT SCALE DRAWING FOR DIMENSIONS Sheet 2 of 5 SCALE 1:12
CONFIDENTIAL DISCLOSURE This drawing is the property of POWEREX, INC. of the SCOTT FETZER COMPANY and subject to return on demand. Its contents are confidential and must not be copied or submitted to outside parties for use or examination.			
DRAWN BY MJD		CHECKED BY AEK	APPROVED BY JAA CT
MATERIAL N/A		DATE 2/3/16	DATE 2/3/16
PART NAME CLAW ENCLOSED COMPRESSOR DUPLEX		POWEREX 150 PRODUCTION DRIVE, HARRISON, OHIO 45030 Ph: 888-769-7979 FAX: (513) 367-3125	
400GAL DUAL DESSICANT PACKAGE		DWG NO MDRC0507	SIZE D

8 7 6 5 4 3 2 1

REV	ZONE	REVISION	DATE	ECN	NAME	CHKD
B-1	ALL	RELEASE TO PRODUCTION	2/3/16	PKEC014	MJD	AEK
C-1	35 ALL	UPDATED TO MAND NDL DRYERS	8/10/17	PKEC0174	AEK	GES
D-1	ALL	ADDED INDIVIDUAL COMPONENT WEIGHTS	4/30/18	PKEC0229	GES	DMS

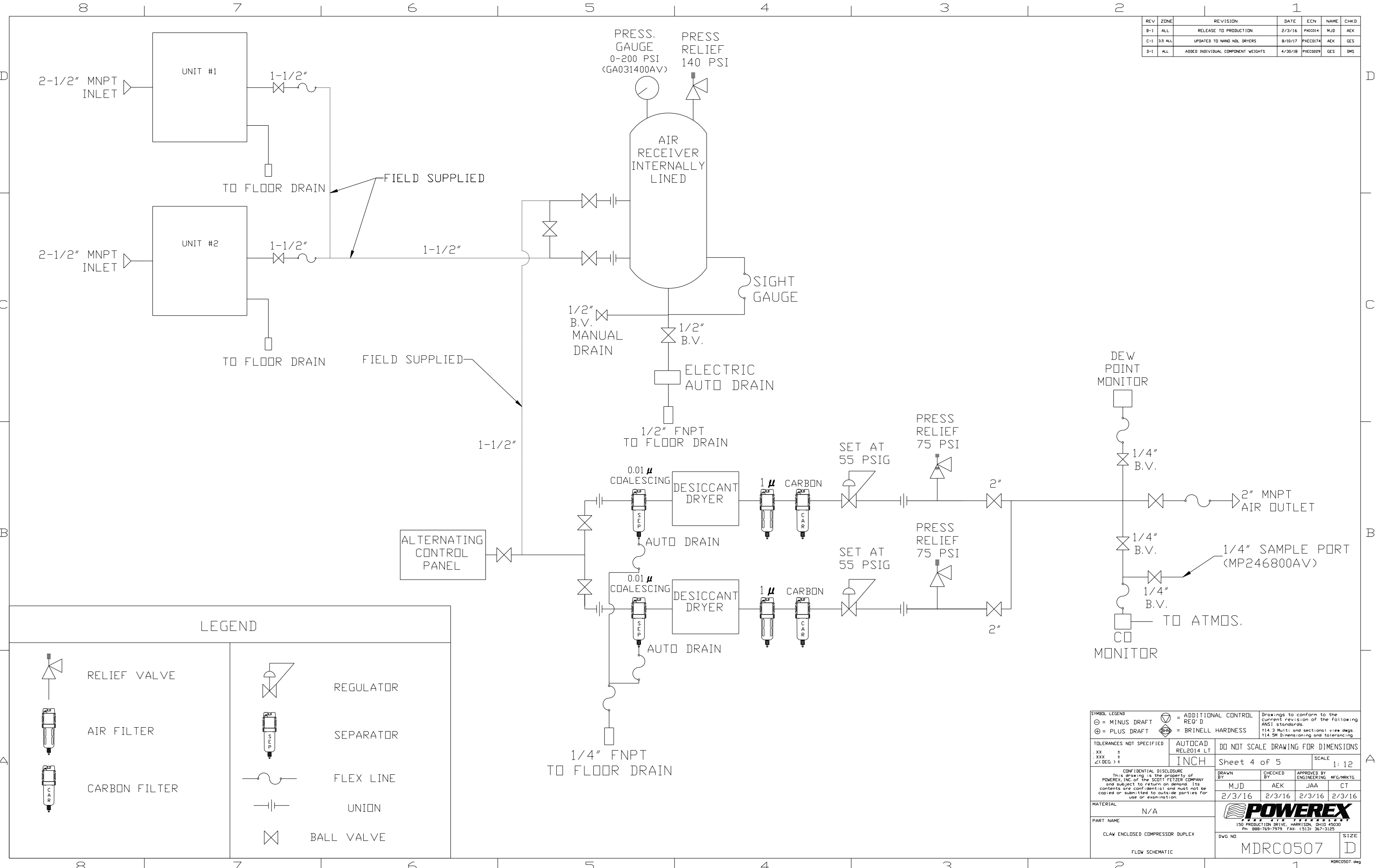


PURIFICATION SKID WEIGHT: 910 LBS

SYMBOL LEGEND ⊖ = MINUS DRAFT ⊕ = PLUS DRAFT HRC = BRINELL HARDNESS		= ADDITIONAL CONTROL REQ'D = BRINELL HARDNESS		Drawings to conform to the current revision of the following ANSI standards: Y14.3 Multi and sectional view dgs. Y14.5M Dimensioning and tolerancing	
TOLERANCES NOT SPECIFIED .XX ± .XXX ± << DEG > ±		AUTOCAD REL2014 LT INCH		DO NOT SCALE DRAWING FOR DIMENSIONS Sheet 3 of 5 SCALE 1:12	
CONFIDENTIAL DISCLOSURE This drawing is the property of POWEREX, INC. of the SCOTT FETZER COMPANY and subject to return on demand. Its contents are confidential and must not be copied or submitted to outside parties for use or examination.					
DRAWN BY MJD		CHECKED BY AEK		APPROVED BY ENGINEERING MFG/MKTG JAA CT	
DATE 2/3/16		DATE 2/3/16		DATE 2/3/16 2/3/16	
MATERIAL N/A		POWEREX 150 PRODUCTION DRIVE, HARRISON, OHIO 45030 Ph 888-769-7979 FAX (513) 367-3125		SIZE D	
PART NAME CLAW ENCLOSED COMPRESSOR DUPLEX		DWG NO MDRC0507		SIZE D	
400GAL DUAL DESSICANT PACKAGE					

8 7 6 5 4 3 2 1

REV	ZONE	REVISION	DATE	ECN	NAME	CHKD
B-1	ALL	RELEASE TO PRODUCTION	2/3/16	PKEC014	MJD	AEK
C-1	35 ALL	UPDATED TO HANI NDL DRYERS	8/10/17	PKEC0174	AEK	GES
D-1	ALL	ADDED INDIVIDUAL COMPONENT WEIGHTS	4/30/18	PKEC0289	GES	DMS

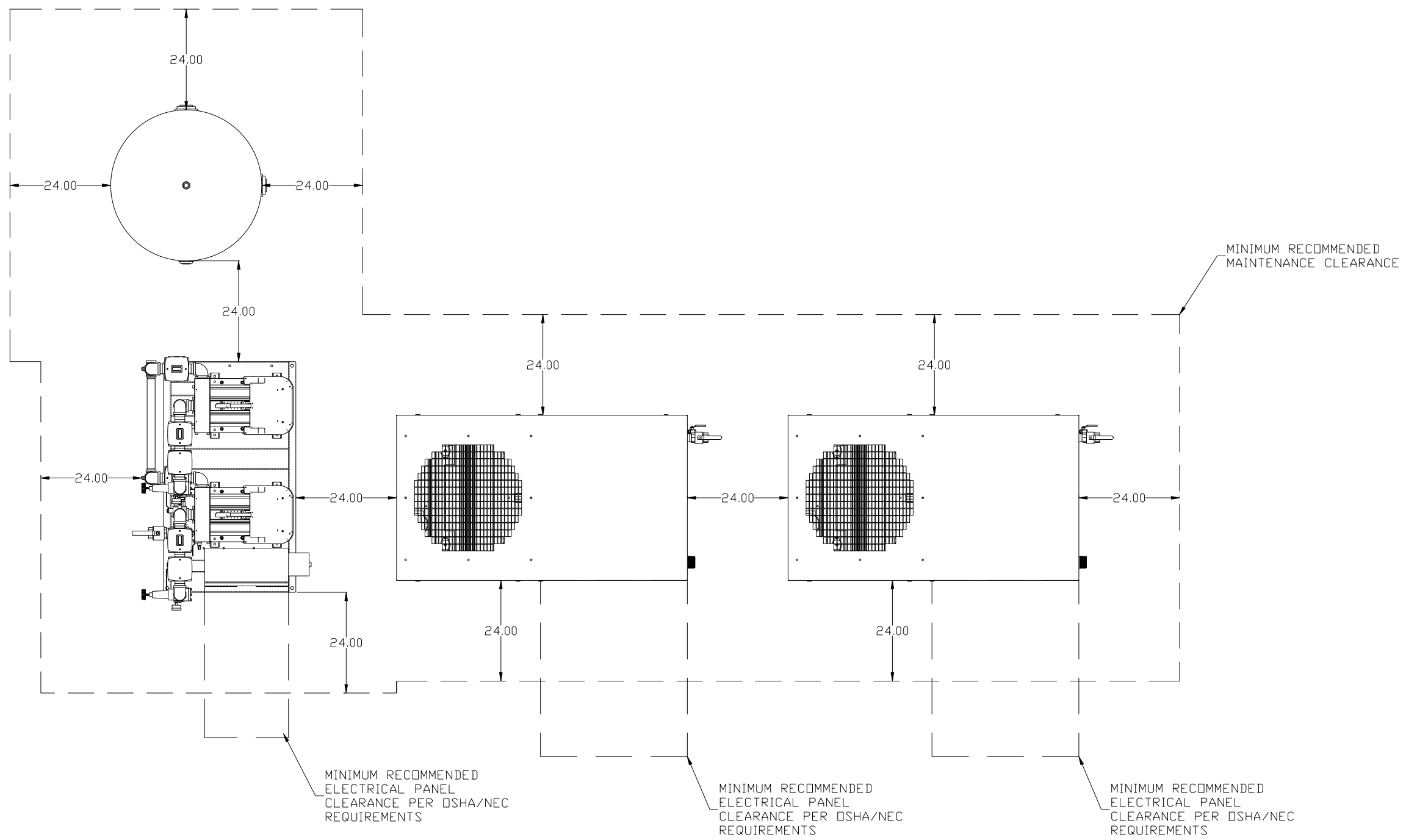


LEGEND	
	RELIEF VALVE
	AIR FILTER
	CARBON FILTER
	REGULATOR
	SEPARATOR
	FLEX LINE
	UNION
	BALL VALVE

SYMBOL LEGEND ⊖ = MINUS DRAFT ⊕ = PLUS DRAFT <small>Drawings to conform to the current revision of the following ANSI standards: Y14.3 Multi and sectional view dsgs. Y14.5M Dimensioning and tolerancing</small>		⊕ = ADDITIONAL CONTROL REQ'D ⊕ = BRINELL HARDNESS
TOLERANCES NOT SPECIFIED .XX ± .XXX ± <DEG> ±	AUTOCAD REL2014 LT INCH	DO NOT SCALE DRAWING FOR DIMENSIONS Sheet 4 of 5 SCALE 1:12
CONFIDENTIAL DISCLOSURE <small>This drawing is the property of POWEREX, INC. of the SCOTT FETZER COMPANY and subject to return on demand. Its contents are confidential and must not be copied or submitted to outside parties for use or examination.</small>		
DRAWN BY MJD	CHECKED BY AEK	APPROVED BY JAA CT
MATERIAL N/A	 150 PRODUCTION DRIVE, HARRISON, OHIO 45030 Ph 888-769-7979 FAX (513) 367-3125	DATE 2/3/16 2/3/16 2/3/16 2/3/16
PART NAME CLAW ENCLOSED COMPRESSOR DUPLEX	DWG NO MDRC0507	SIZE D
FLOW SCHEMATIC		

8 7 6 5 4 3 2 1

REV	ZONE	REVISION	DATE	ECN	NAME	CHKD
B-1	ALL	RELEASE TO PRODUCTION	2/3/16	PKE014	MJD	AEK
C-1	35 ALL	UPDATED TO MAND NDL DRYERS	8/10/17	PKE0174	AEK	GES
D-1	ALL	ADDED INDIVIDUAL COMPONENT WEIGHTS	4/30/18	PKE0289	GES	DMS



TOTAL UNIT WEIGHT: 7530 LBS

SYMBOL LEGEND ⊖ = MINUS DRAFT ⊕ = PLUS DRAFT TOLERANCES NOT SPECIFIED .XX ± .XXX ± <<DEG> ±		= ADDITIONAL CONTROL REQ'D = BRINELL HARDNESS		Drawings to conform to the current revision of the following ANSI standards: Y14.3 Multi and sectional view dgs. Y14.5M Dimensioning and tolerancing
AUTOCAD REL2014 LT INCH		DO NOT SCALE DRAWING FOR DIMENSIONS Sheet 5 of 5 SCALE 1:14		
CONFIDENTIAL DISCLOSURE This drawing is the property of POWEREX, INC. of the SCOTT FETZER COMPANY and subject to return on demand. Its contents are confidential and must not be copied or submitted to outside parties for use or examination.				
DRAWN BY MJD	CHECKED BY AEK	APPROVED BY JAA	MFG/MRKTG CT	
MATERIAL N/A		POWEREX 150 PRODUCTION DRIVE, HARRISON, OHIO 45030 Ph: 888-769-7979 FAX: (513) 367-3125		
PART NAME CLAW ENCLOSED COMPRESSOR DUPLEX 400GAL DUAL DESSICANT PACKAGE		DWG NO MDRC0507	SIZE D	

8 7 6 5 4 3 2 1