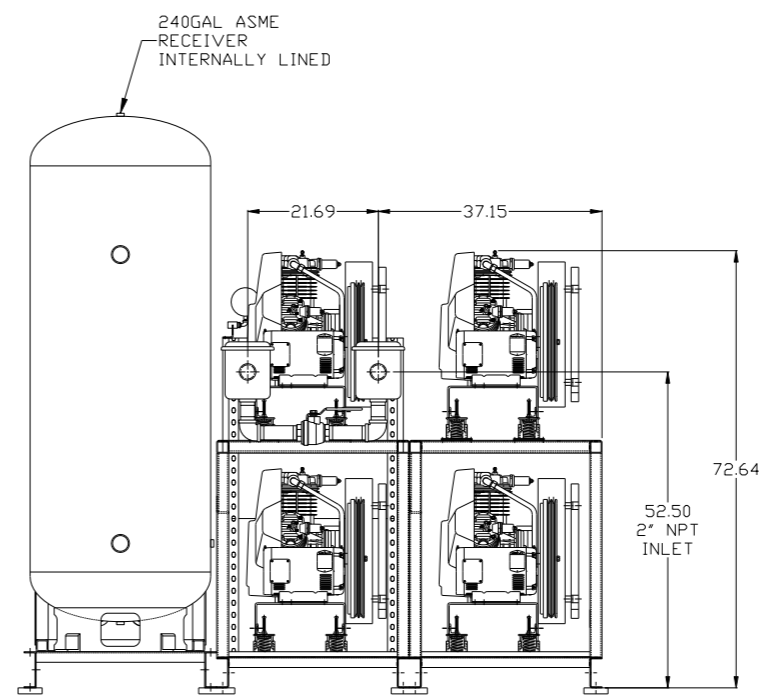
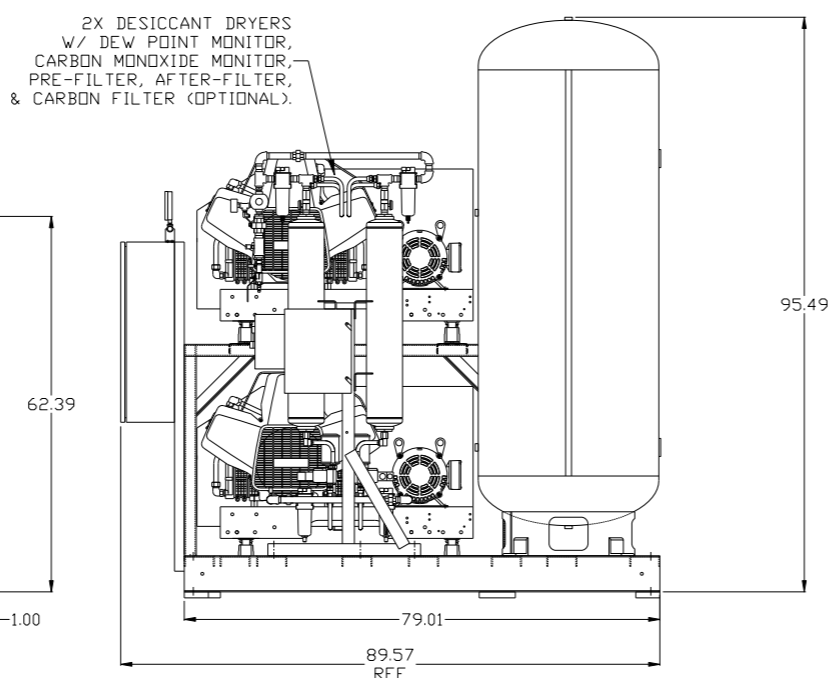
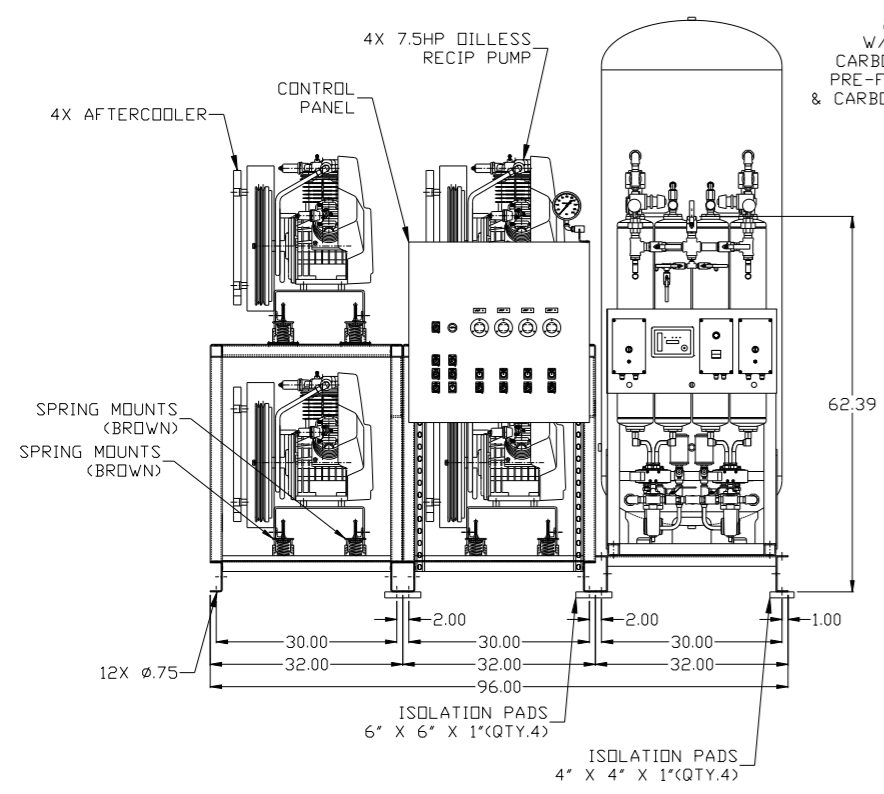
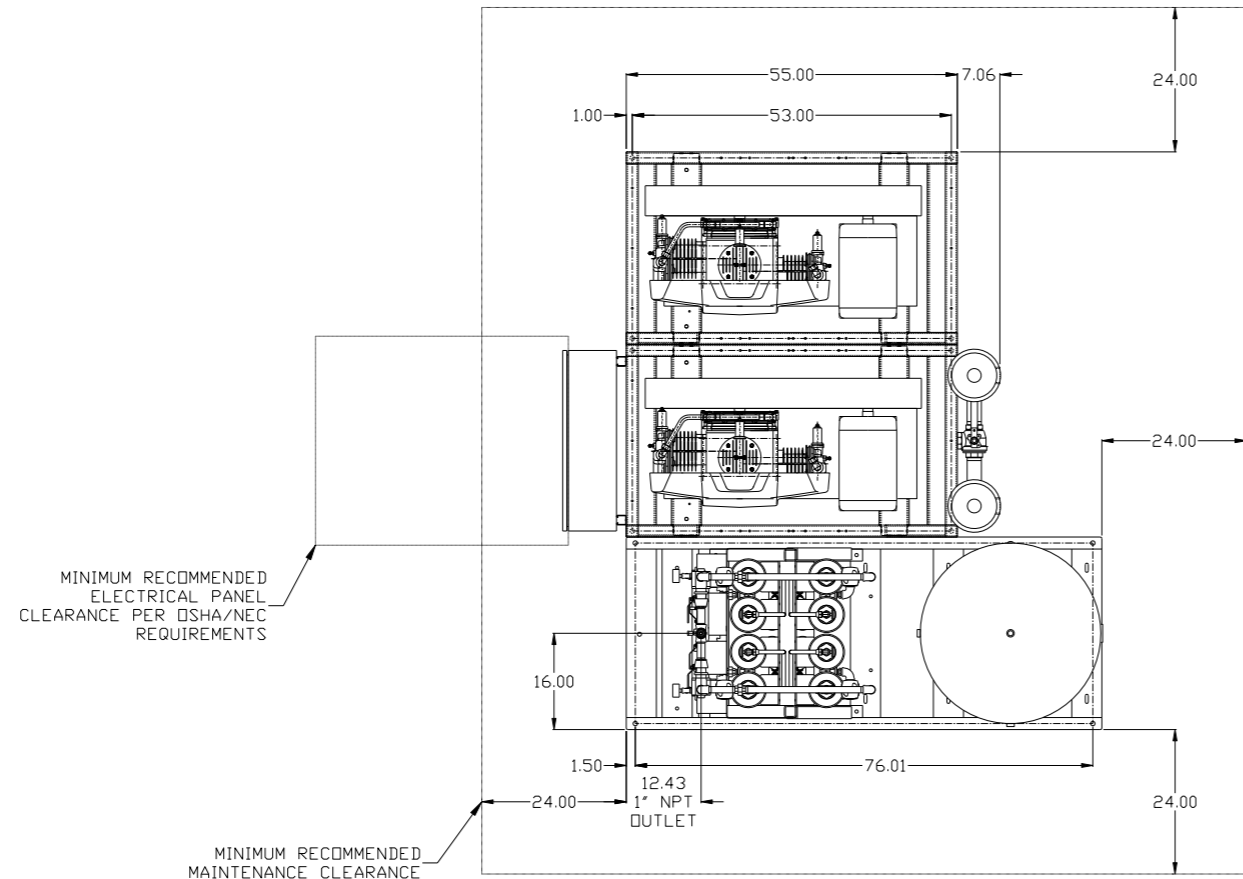


8 7 6 5 4 3 2 1

REV	ZONE	REVISION	DATE	ECN	NAME	CHKD
B-1	ALL	RELEASE TO PRODUCTION	08/14/06	21555	RSN	GES
N-1	ALL	ADDED P&MI SHEETS	9/23/11	22609	AEK	GES
P-1	2 ALL	ADDED/UPDATED FLEX LINES	12/12/13	PKEC030	AEK	GES
Q-1	1 ALL	UPDATED DRYER OUTLET ORIENTATION	4/1/15	PKEC080	MJD	GES
R-1	2 DS	REMOVED SNUBBER VALVE	03/28/16	PKEC033	MJD	AEK

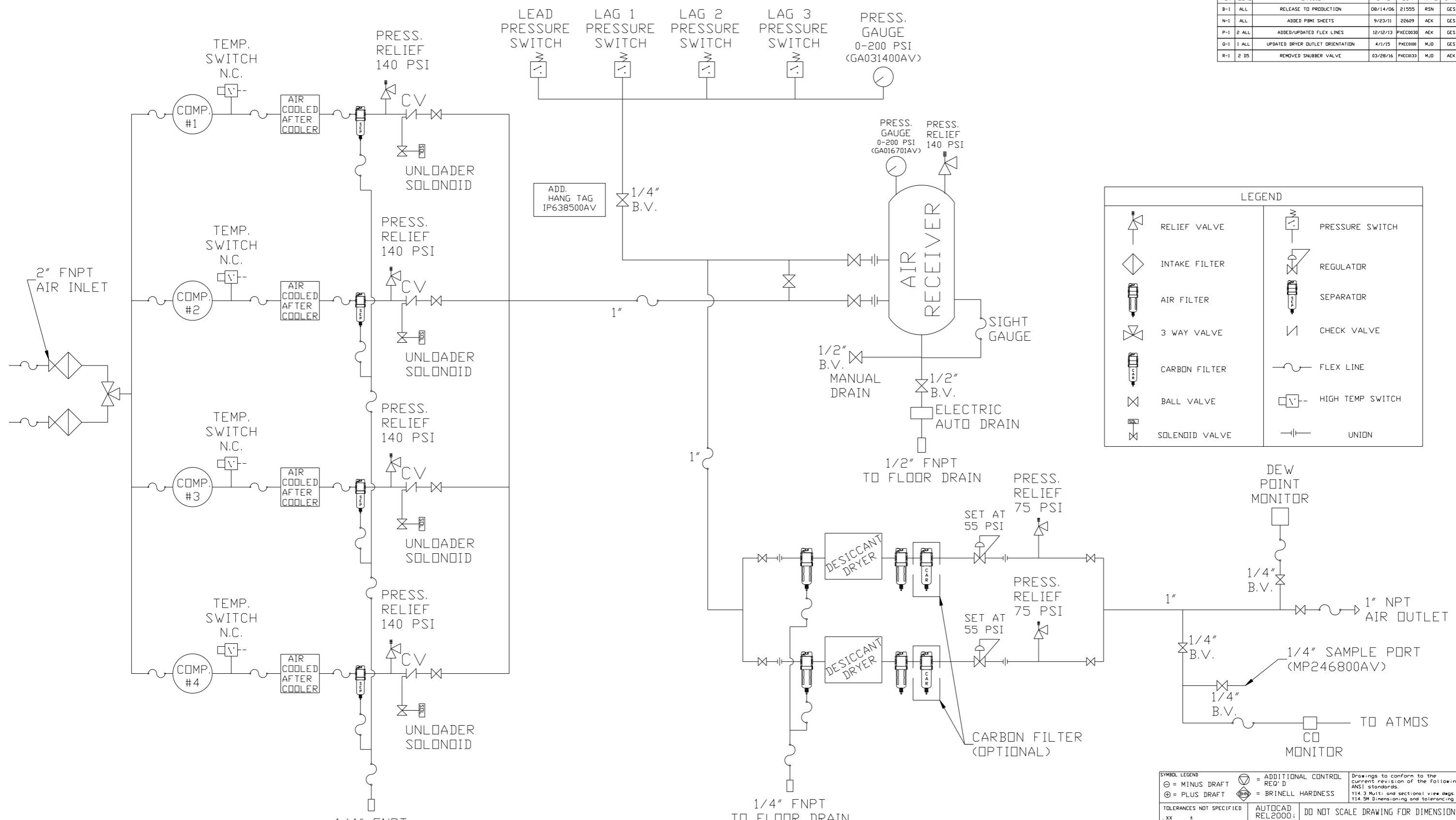


NOTE: SYSTEM DESIGNED IN COMPLIANCE WITH U.S. NFPA '99, LATEST EDITION.

SYMBOL LEGEND ⊖ = MINUS DRAFT ⊕ = PLUS DRAFT ⊕ = ADDITIONAL CONTROL REQ'D ⊕ = BRINELL HARDNESS		Drawings to conform to the current revision of the following ANSI standards: Y14.3 Multi and sectional view dgs. Y14.5M Dimensioning and tolerancing	
TOLERANCES NOT SPECIFIED .XX ± .XXX ± \angle(DEG) ±		AUTOCAD REL2000: DO NOT SCALE DRAWING FOR DIMENSIONS INCH Sheet 1 of 2 SCALE 1:16	
CONFIDENTIAL DISCLOSURE This drawing is the property of POWEREX, INC. of the SCOTT FETZER COMPANY and subject to return on demand. Its contents are confidential and must not be copied or submitted to outside parties for use or examination.			
DRAWN BY: RSN CHECKED BY: GES APPROVED BY: DMS, JJ 04/17/06 4/25/06 4/28/06 7/06/06		POWEREX 150 PRODUCTION DRIVE, HARRISON, OHIO 45030 Ph 888-769-7979 FAX (513) 367-3125	
MATERIAL: N/A PART NAME: QUADPLEX DILLESS RECIP 7.5HP 240GAL BASEMOUNT DUPLEX DESICCANT		DWG NO: MPQ0758 SIZE: D	

8 7 6 5 4 3 2 1

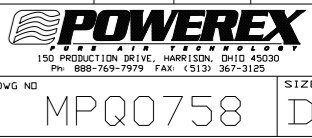
REV	ZONE	REVISION	DATE	ECN	NAME	CHKD
B-1	ALL	RELEASE TO PRODUCTION	08/14/06	21555	RSN	GES
N-1	ALL	ADDED P&MI SHEETS	9/23/11	22609	AEK	GES
P-1	2 ALL	ADDED/UPDATED FLEX LINES	12/12/13	P&EC030	AEK	GES
Q-1	1 ALL	UPDATED DRYER OUTLET ORIENTATION	4/1/15	P&EC010	MJD	GES
R-1	2 DS	REMOVED SMUBBER VALVE	03/28/16	P&EC033	MJD	AEK



	RELIEF VALVE		PRESSURE SWITCH
	INTAKE FILTER		REGULATOR
	AIR FILTER		SEPARATOR
	3 WAY VALVE		CHECK VALVE
	CARBON FILTER		FLEX LINE
	BALL VALVE		HIGH TEMP SWITCH
	SOLENOID VALVE		UNION

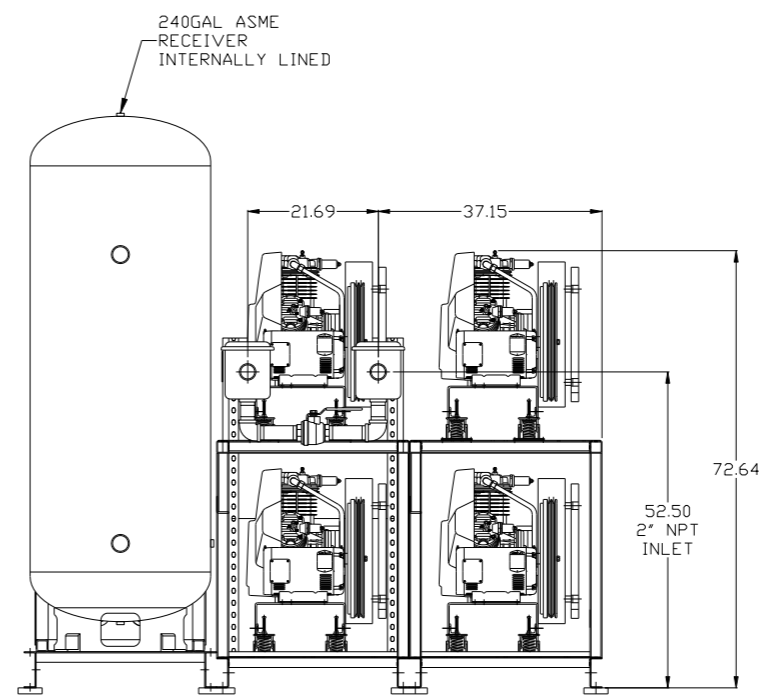
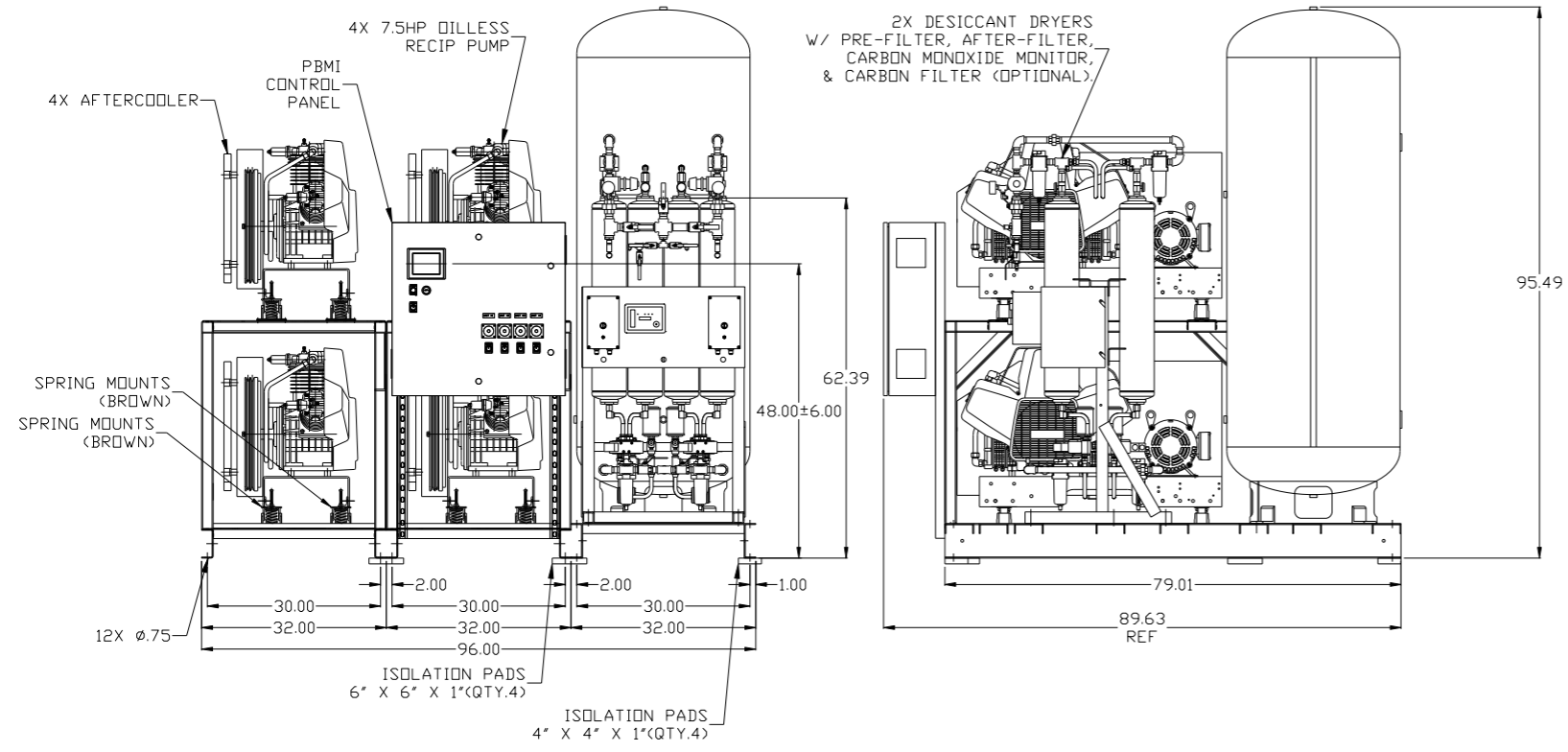
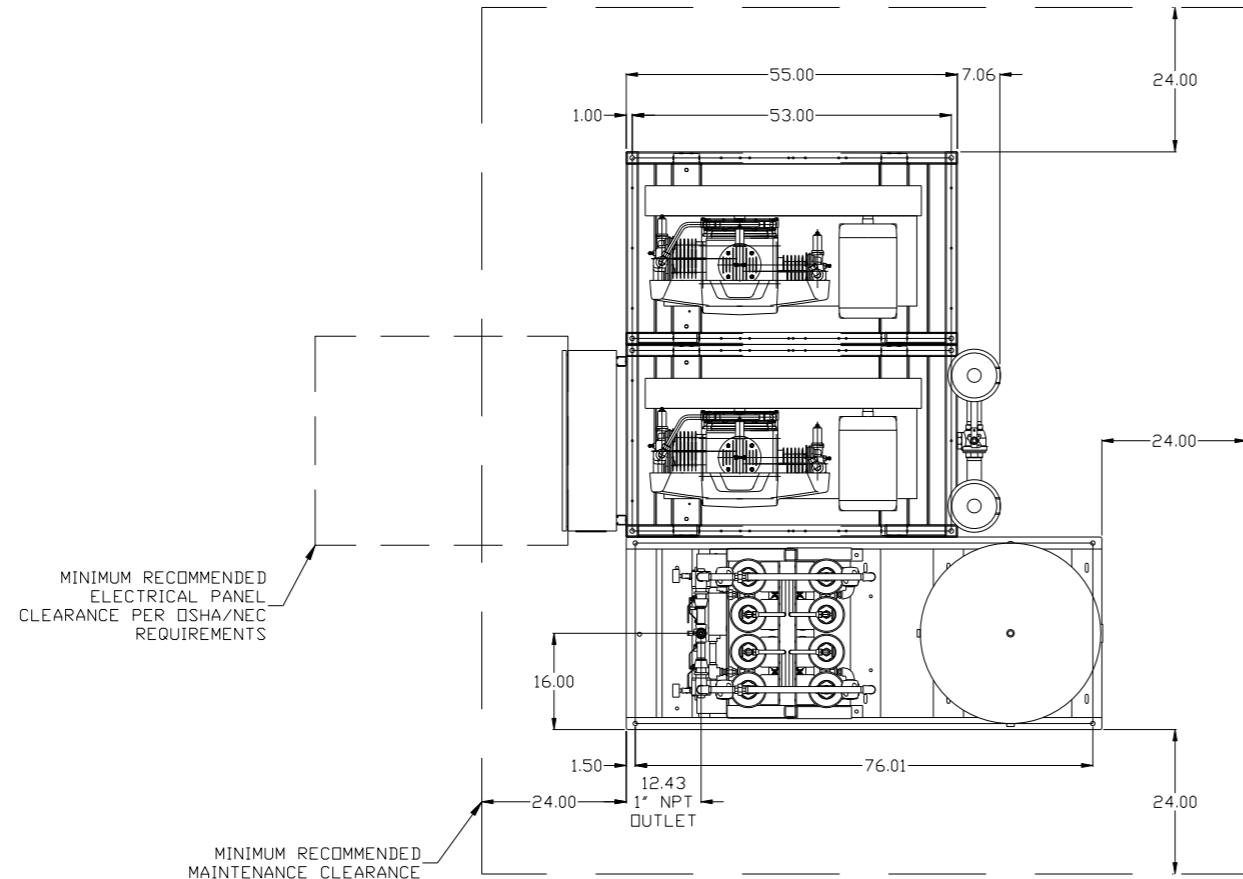
- NOTES:
- 1) IF LAG 3 COMPRESSOR IS ENERGIZED ALARM WILL OCCUR.
 - 2) PIPING TO THE INLET BY OTHERS AND TO BE PER NFPA99
 - 3) INSTRUMENTS DOWN STREAM OF SOURCE VALVE TO BE SUPPLIED BY OTHERS.

SYMBOL LEGEND ⊖ = MINUS DRAFT ⊕ = PLUS DRAFT		⊕ = ADDITIONAL CONTROL REQ'D ⊕ = BRINELL HARDNESS		Drawings to conform to the current revision of the following ANSI standards: Y14.3 Multi and sectional view dgs. Y14.5M Dimensioning and tolerancing	
TOLERANCES NOT SPECIFIED .XX ± .XXX ± \angle (DEG.) ±		AUTOCAD REL2000 INCH		DO NOT SCALE DRAWING FOR DIMENSIONS Sheet 2 of 2 SCALE 1:16	
CONFIDENTIAL DISCLOSURE This drawing is the property of POWEREX, INC. or the SCOTT FEITZER COMPANY and subject to return on demand. Its contents are confidential and must not be copied or submitted to outside parties for use or examination.		DRAWN BY RSN		CHECKED BY GES	
MATERIAL N/A		APPROVED BY DMS		MFG/MKTG JJ	
PART NAME QUADPLEX MED RECIP PKG FLOW SCHEMATIC		DATE 04/17/06		DATE 4/25/06	
DWG NO MPQ0758		DATE 4/28/06		DATE 7/06/06	



8 7 6 5 4 3 2 1

REV	ZONE	REVISION	DATE	ECN	NAME	CHKD
N-1	ALL	ADDED PBMI SHEETS	9/23/11	22609	AEK	GES
P-1	2 ALL	ADDED/UPDATED FLEX LINES	12/12/13	PKEC0030	AEK	GES
Q-1	1 ALL	UPDATED DRYER OUTLET ORIENTATION	4/1/15	PKEC0080	MJD	GES
R-1	2 DS	REMOVED SNUBBER VALVE	03/28/16	PKEC0133	MJD	AEK

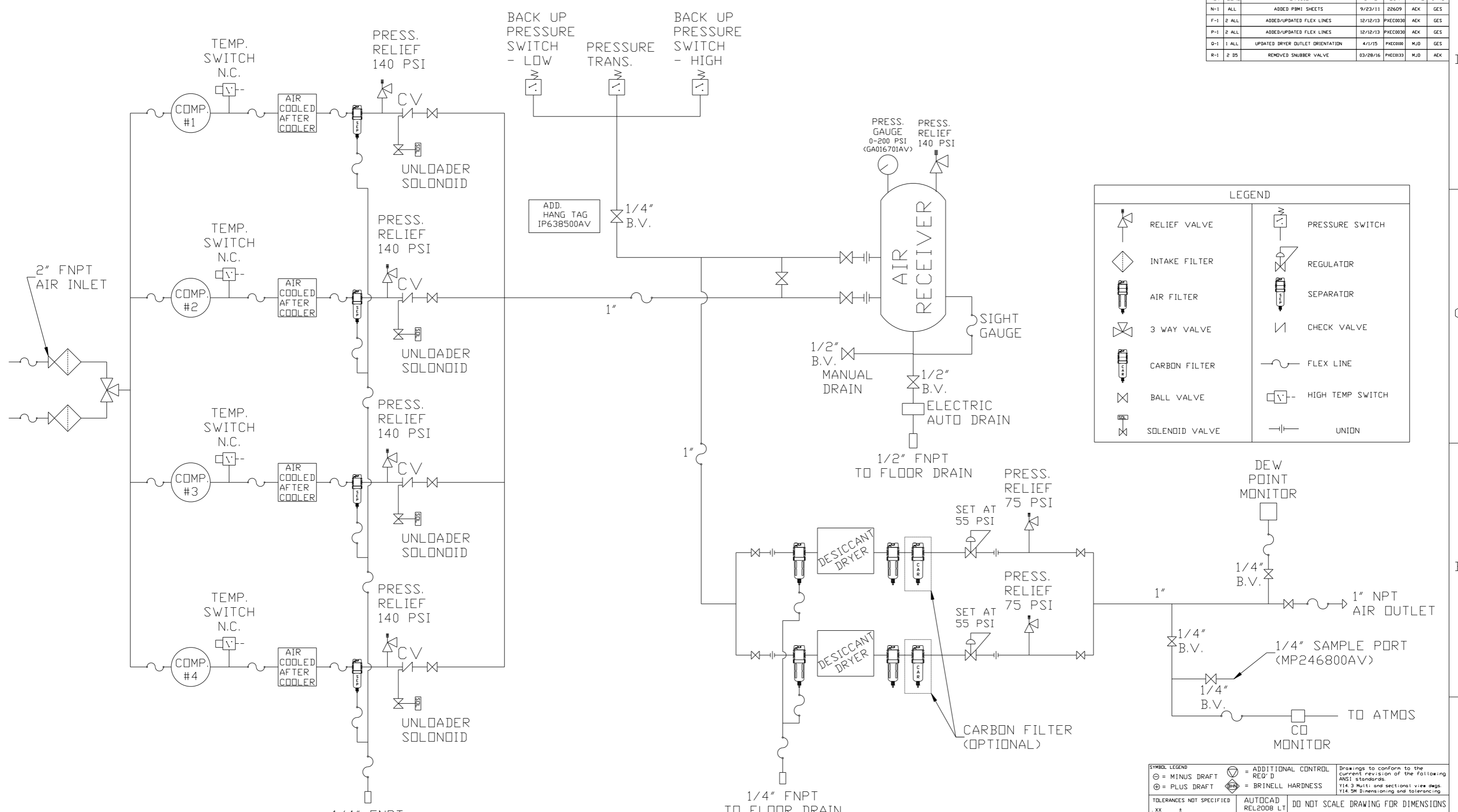


NOTE: SYSTEM DESIGNED IN COMPLIANCE WITH U.S. NFPA '99, LATEST EDITION.

SYMBOL LEGEND ⊖ = MINUS DRAFT ⊕ = PLUS DRAFT ⊕ = ADDITIONAL CONTROL REQ'D ⊕ = BRINELL HARDNESS		Drawings to conform to the current revision of the following ANSI standards: Y14.3 Multi and sectional view dgs. Y14.5M Dimensioning and tolerancing	
TOLERANCES NOT SPECIFIED .XX ± .XXX ± <DEG> ±		AUTOCAD REL2008 LT INCH DO NOT SCALE DRAWING FOR DIMENSIONS Sheet 1 of 2 SCALE 1:16	
CONFIDENTIAL DISCLOSURE This drawing is the property of POWEREX, INC. of the SCOTT FETZER COMPANY and subject to return on demand. Its contents are confidential and must not be copied or submitted to outside parties for use or examination.			
DRAWN BY: AEK CHECKED BY: GES 9/23/11		APPROVED BY: ENGINEERING MFG/MKTG DMS RJR 9/23/11 9/23/11 9/23/11 9/23/11	
MATERIAL: N/A		 150 PRODUCTION DRIVE, HARRISON, OHIO 45030 Ph 888-769-7979 FAX (513) 367-3125	
PART NAME: QUADPLEX OILLESS RECIP 7.5HP 240GAL BASEMOUNT DUPLEX DESICCANT		DWG NO: MPQ0758 SIZE: D	

8 7 6 5 4 3 2 1

REV	ZONE	REVISION	DATE	ECN	NAME	CHKD
N-1	ALL	ADDED P&MI SHEETS	9/23/11	22609	AEK	GES
F-1	2 ALL	ADDED/UPDATED FLEX LINES	12/12/13	PXEC0030	AEK	GES
P-1	2 ALL	ADDED/UPDATED FLEX LINES	12/12/13	PXEC0030	AEK	GES
Q-1	1 ALL	UPDATED DRYER OUTLET ORIENTATION	4/1/15	PXEC0180	MJD	GES
R-1	2 DS	REMOVED SMUBBER VALVE	03/28/16	PXEC0133	MJD	AEK



	RELIEF VALVE		PRESSURE SWITCH
	INTAKE FILTER		REGULATOR
	AIR FILTER		SEPARATOR
	3 WAY VALVE		CHECK VALVE
	CARBON FILTER		FLEX LINE
	BALL VALVE		HIGH TEMP SWITCH
	SOLENOID VALVE		UNION

- NOTES:
- 1) IF LAG 3 COMPRESSOR IS ENERGIZED ALARM WILL OCCUR.
 - 2) PIPING TO THE INLET BY OTHERS AND TO BE PER NFPA99
 - 3) INSTRUMENTS DOWN STREAM OF SOURCE VALVE TO BE SUPPLIED BY OTHERS.

SYMBOL LEGEND ⊖ = MINUS DRAFT ⊕ = PLUS DRAFT .XX ± .XXX ± \angle(DEG.) ±		= ADDITIONAL CONTROL REQ'D = BRINELL HARDNESS	Drawings to conform to the current revision of the following ANSI standards: Y14.3 Multi and sectional view dgs. Y14.5M Dimensioning and tolerancing
TOLERANCES NOT SPECIFIED AUTOCAD REL2008 LT INCH		DO NOT SCALE DRAWING FOR DIMENSIONS Sheet 2 of 2 SCALE 1:16	
CONFIDENTIAL DISCLOSURE This drawing is the property of POWEREX, INC. OF THE SCOTT FETZER COMPANY and subject to return on demand. Its contents are confidential and must not be copied or submitted to outside parties for use or examination.			
MATERIAL N/A		DRAWN BY: AEK CHECKED BY: GES 9/23/11	
PART NAME 7.5HP. MED. PACKAGE FLOW SCHEMATIC		APPROVED BY: DMS, RJR 9/23/11, 9/23/11, 9/23/11, 9/23/11	
DWG NO MPQ0758		SIZE D	

8 7 6 5 4 3 2 1

D
C
B
A

8 7 6 5 4 3 2 1