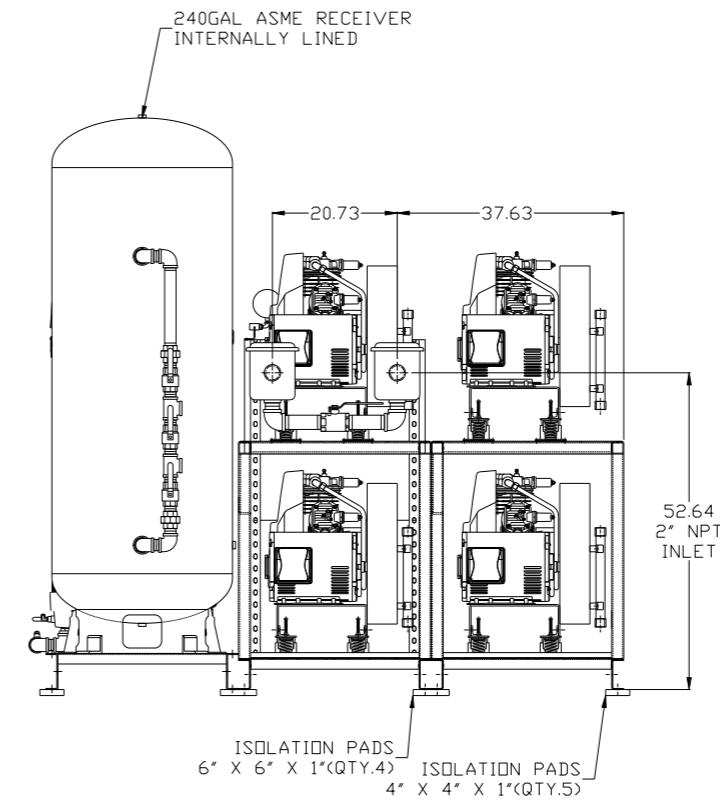
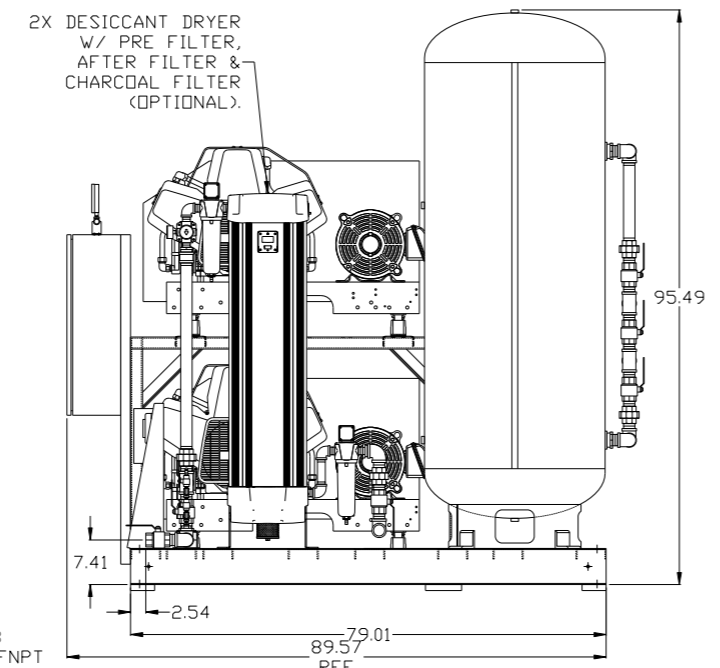
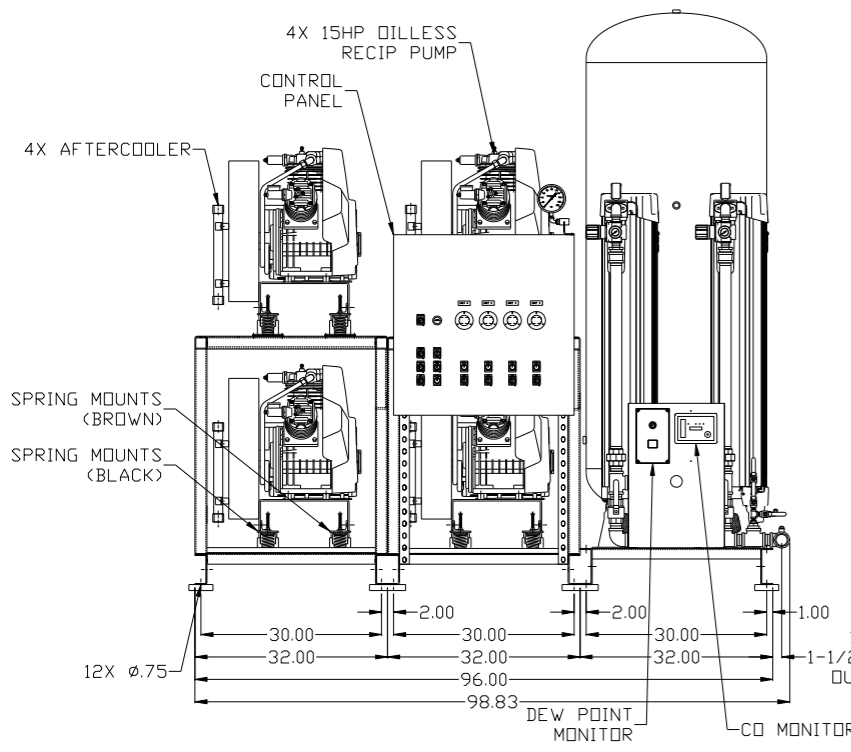
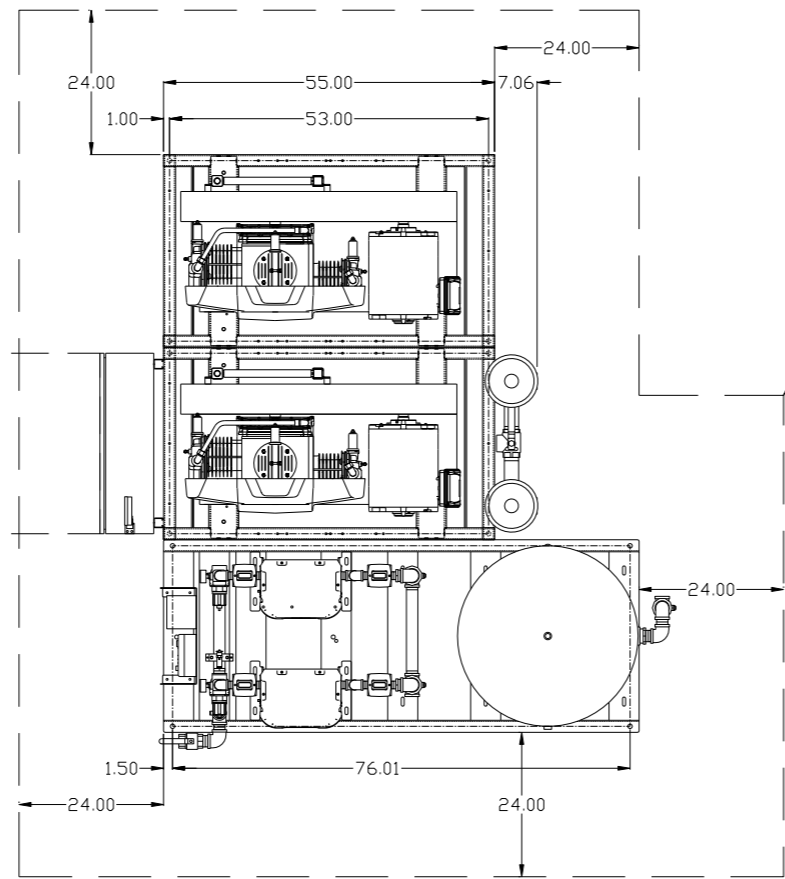


8 7 6 5 4 3 2 1

REV	ZONE	REVISION	DATE	ECN	NAME	CHKD
B-1	ALL	RELEASE TO PRODUCTION	09/11/06	21437	DMS	DMS
C-1	1 ALL	ADDED DME FRAME, NEW STYLE PANEL & TANK	11/8/07	21669	AEK	GES
D-1	2 ALL	UPDATED FLOW SCHEMATIC	12/3/07	21890	AEK	GES
E-1	D-5	ADDED HANG TAG	03/20/08	21907	DMS	GES
F-1	1B-7	ADDED SPRING COLOR LOCATIONS	8/11/08	22039	GES	DMS
G-1	ALL	UPDATED FRAMES, DP. MONITOR, FLOW SCHEMATIC	5/28/09	22127	AEK	GES
H-1	1 ALL	REMOVED 10" BASE SHD & RELOCATED PANEL AND DRYERS	9/24/09	22286	AEK	GES
J-1	1 ALL	UPDATED PUMP FRAMES	4/16/10	22407	AEK	GES
J-2	1 ALL	UPDATED AFTERCOOLER MOUNTING BRACKET	12/3/10	22407	AEK	GES
K-1	ALL	ADDED SHEETS 3 & 4	12/20/10	22348	AEK	KMD
L-1	ALL	ADDED PBMI SHEETS	9/23/11	22609	AEK	GES
M-1	2 ALL	ADDED/UPDATED FLEX LINES	10/10/12	PXEC0009	AEK	DMS
N-1	ALL	ADDED CD MONITOR TO SYSTEM LAYOUT	12/12/13	PXEC0030	AEK	GES
P-1	2 D5	REMOVED SNUBBER VALVE	03/28/16	PXEC0133	MJD	AEK
Q-1	1,3,4 ALL	UPDATED TO HAND DRYERS	8/10/17	PXEC0174	AEK	GES

MINIMUM RECOMMENDED ELECTRICAL PANEL CLEARANCE PER OSHA/NEC REQUIREMENTS

MINIMUM RECOMMENDED MAINTENANCE CLEARANCE



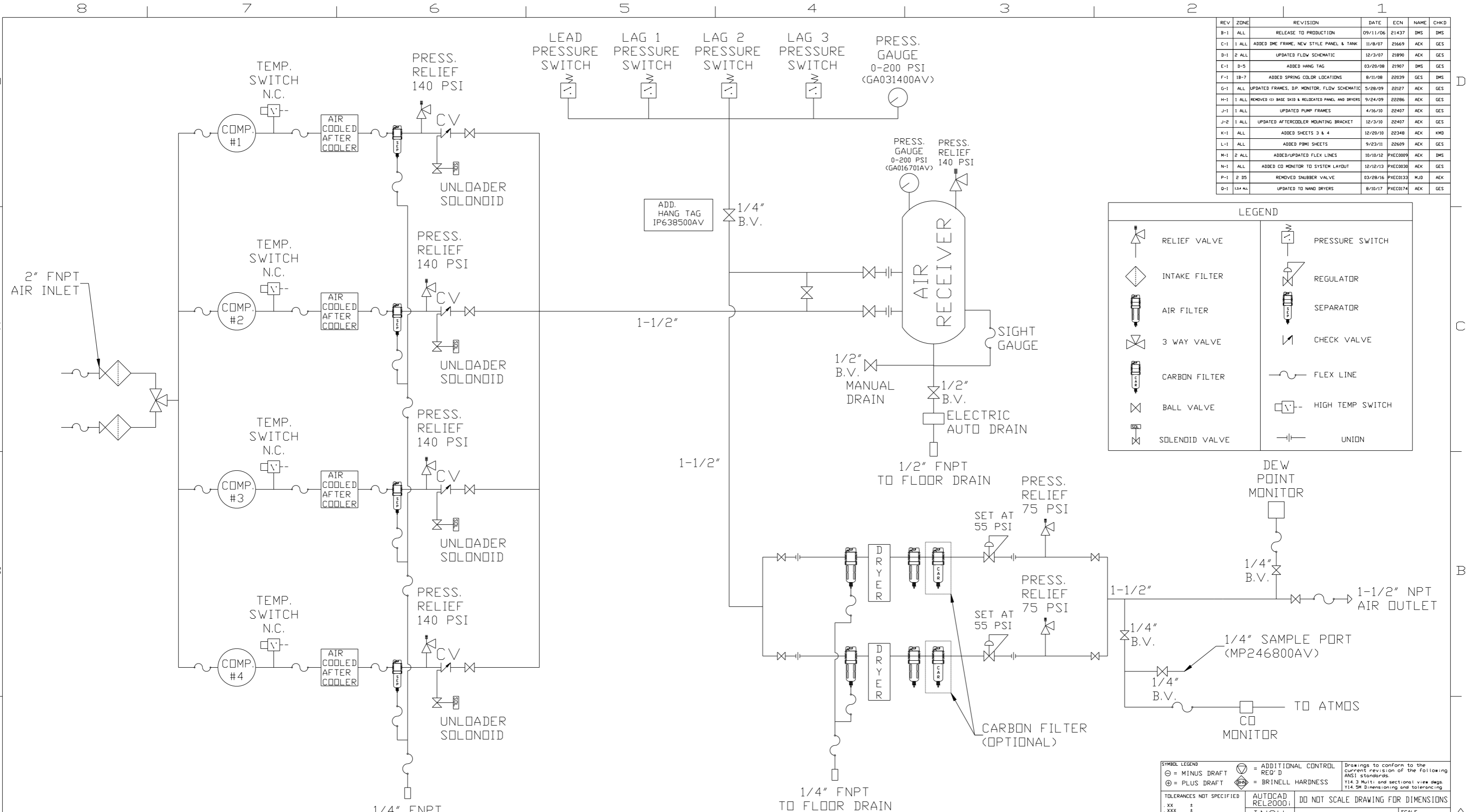
NOTE: SYSTEM DESIGNED IN COMPLIANCE WITH U.S. NFPA '99, LATEST EDITION.

SYMBOL LEGEND		= ADDITIONAL CONTROL REQ'D		Drawings to conform to the current revision of the following ANSI standards:	
⊖ = MINUS DRAFT		= BRINELL HARDNESS		Y14.3 Multi and sectional view dgs. Y14.5M Dimensioning and tolerancing	
⊕ = PLUS DRAFT					
TOLERANCES NOT SPECIFIED		AUTOCAD REL2000:		DO NOT SCALE DRAWING FOR DIMENSIONS	
.XX ±		INCH		Sheet 1 of 4	
.XXX ±				SCALE 1:16	
\angle DEG ±					
CONFIDENTIAL DISCLOSURE					
This drawing is the property of POWEREX, INC. of the SCOTT FEITZER COMPANY and subject to return on demand. Its contents are confidential and must not be copied or submitted to outside parties for use or examination.					
DRAWN BY		CHECKED BY		APPROVED BY	
DMS		DMS		DMS JJ	
09/11/06		09/11/06		09/11/06	
MATERIAL					
N/A					
PART NAME					
QUADPLEX DILLESS RECIP. 15HP. 240GAL. BASEMOUNT DUPLEX DESICCANT					
DWG NO				SIZE	
MPQ1508				D	

8 7 6 5 4 3 2 1

mpq1508.dwg

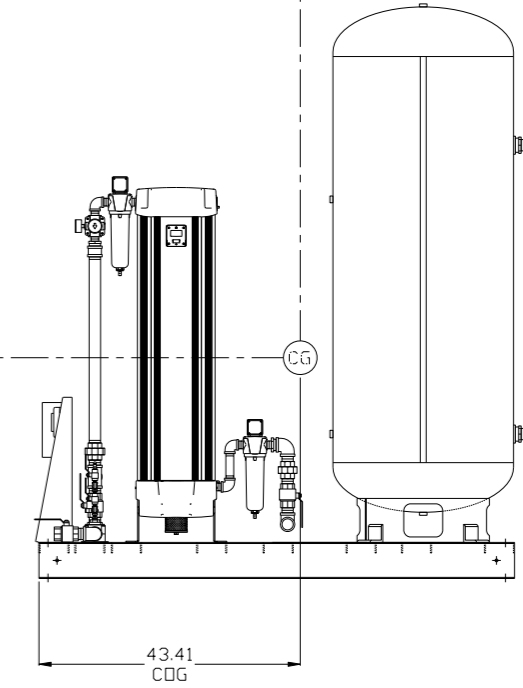
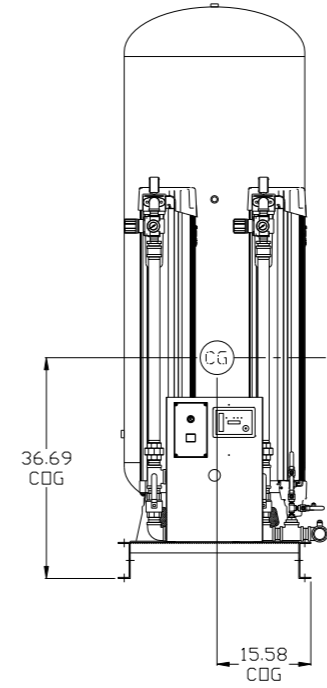
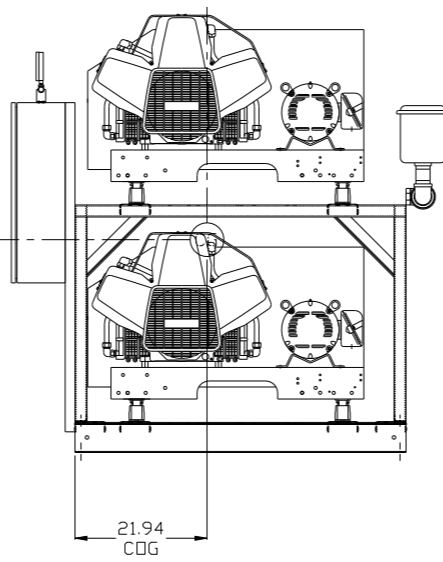
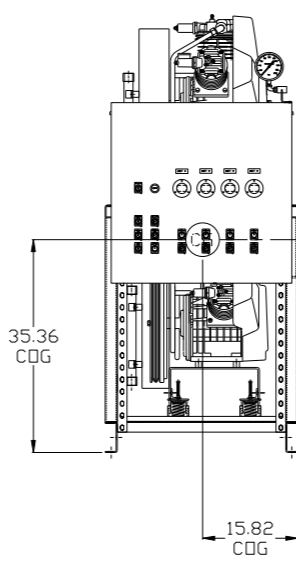
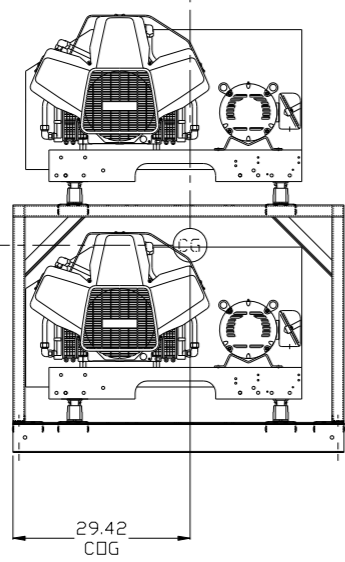
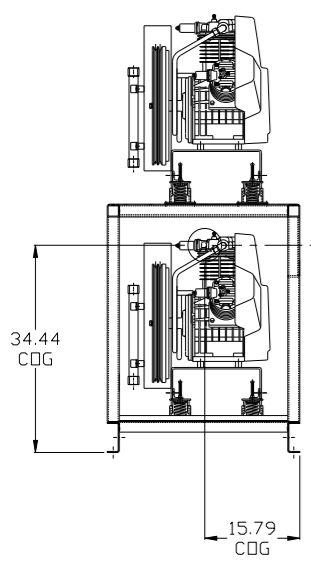
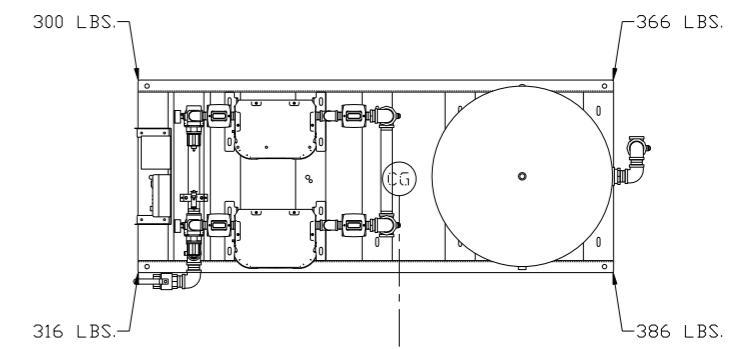
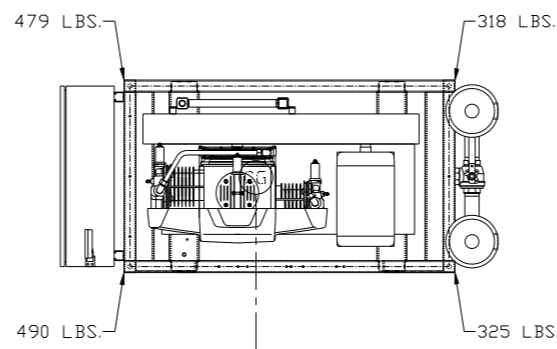
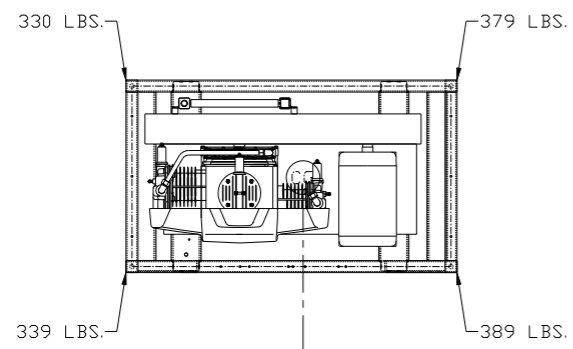
REV	ZONE	REVISION	DATE	ECN	NAME	CHKD
B-1	ALL	RELEASE TO PRODUCTION	09/11/06	21437	DMS	DMS
C-1	1 ALL	ADDED DME FRAME, NEW STYLE PANEL & TANK	11/8/07	21669	AEK	GES
D-1	2 ALL	UPDATED FLOW SCHEMATIC	12/3/07	21890	AEK	GES
E-1	D-5	ADDED HANG TAG	03/20/08	21907	DMS	GES
F-1	1B-7	ADDED SPRING COLOR LOCATIONS	8/11/08	22039	GES	DMS
G-1	ALL	UPDATED FRAMES, DP. MONITOR, FLOW SCHEMATIC	5/28/09	22127	AEK	GES
H-1	1 ALL	REMOVED 10 BASE SH10 & RELOCATED PANEL AND DRYERS	9/24/09	22286	AEK	GES
J-1	1 ALL	UPDATED PUMP FRAMES	4/16/10	22407	AEK	GES
J-2	1 ALL	UPDATED AFTERCOOLER MOUNTING BRACKET	12/3/10	22407	AEK	GES
K-1	ALL	ADDED SHEETS 3 & 4	12/20/10	22348	AEK	KMD
L-1	ALL	ADDED P&ID SHEETS	9/23/11	22609	AEK	GES
M-1	2 ALL	ADDED/UPDATED FLEX LINES	10/10/12	PXEC009	AEK	DMS
N-1	ALL	ADDED CO MONITOR TO SYSTEM LAYOUT	12/12/13	PXEC030	AEK	GES
P-1	2 DS	REMOVED SNUBBER VALVE	03/28/16	PXEC033	MJD	AEK
Q-1	1&4 ALL	UPDATED TO HAND DRYERS	8/10/17	PXEC0174	AEK	GES



- NOTES:
- 1) IF LAG 3 COMPRESSOR IS ENERGIZED ALARM WILL OCCUR.
 - 2) PIPING TO THE INLET BY OTHERS AND TO BE PER NFPA99
 - 3) INSTRUMENTS DOWN STREAM OF SOURCE VALVE TO BE SUPPLIED BY OTHERS.

SYMBOL LEGEND		= ADDITIONAL CONTROL REQ'D		Drawings to conform to the current revision of the following ANSI standards:	
= MINUS DRAFT		= BRINELL HARDNESS		Y14.3 Multi and sectional view dgs. Y14.5M Dimensioning and tolerancing	
TOLERANCES NOT SPECIFIED		AUTOCAD REL2000:		DO NOT SCALE DRAWING FOR DIMENSIONS	
.XX ±		INCH		Sheet 2 of 4	
.XXX ±				SCALE 1:16	
<Z(DEG) ±					
CONFIDENTIAL DISCLOSURE					
This drawing is the property of POWEREX, INC. of the SCOTT FETZER COMPANY and subject to return on demand. Its contents are confidential and must not be copied or submitted to outside parties for use or examination.					
DRAWN BY		CHECKED BY		APPROVED BY	
DMS		DMS		DMS JJ	
09/11/06		09/11/06		09/11/06	
MATERIAL N/A					
PART NAME MEDICAL QUADPLEX OIL-LESS RECIP FLOW SCHEMATIC					
DWG NO MPQ1508				SIZE D	

REV	ZONE	REVISION	DATE	ECN	NAME	CHKD
K-1	ALL	ADDED SHEETS 3 & 4	12/20/10	22348	AEK	KMD
L-1	ALL	ADDED P&MI SHEETS	9/23/11	22609	AEK	GES
M-1	2 ALL	ADDED/UPDATED FLEX LINES	10/10/12	PXEC0009	AEK	DMS
N-1	ALL	ADDED CO MONITOR TO SYSTEM LAYOUT	12/12/13	PXEC0030	AEK	GES
P-1	2 DS	REMOVED SNUBBER VALVE	03/28/16	PXEC0133	MJD	AEK
Q-1	1,2,4 ALL	UPDATED TO NANO DRYERS	8/10/17	PXEC0174	AEK	GES



PUMP SKID:
TOTAL WEIGHT: 1437 LBS
C.D.G. DIMENSIONS
X (FRONT): -15.79"
Y (RIGHT): 25.09"
Z (HEIGHT): 34.44"

PANEL/PUMP SKID:
TOTAL WEIGHT: 1612 LBS
C.D.G. DIMENSIONS
X (FRONT): -15.81"
Y (RIGHT): 21.94"
Z (HEIGHT): 35.36"

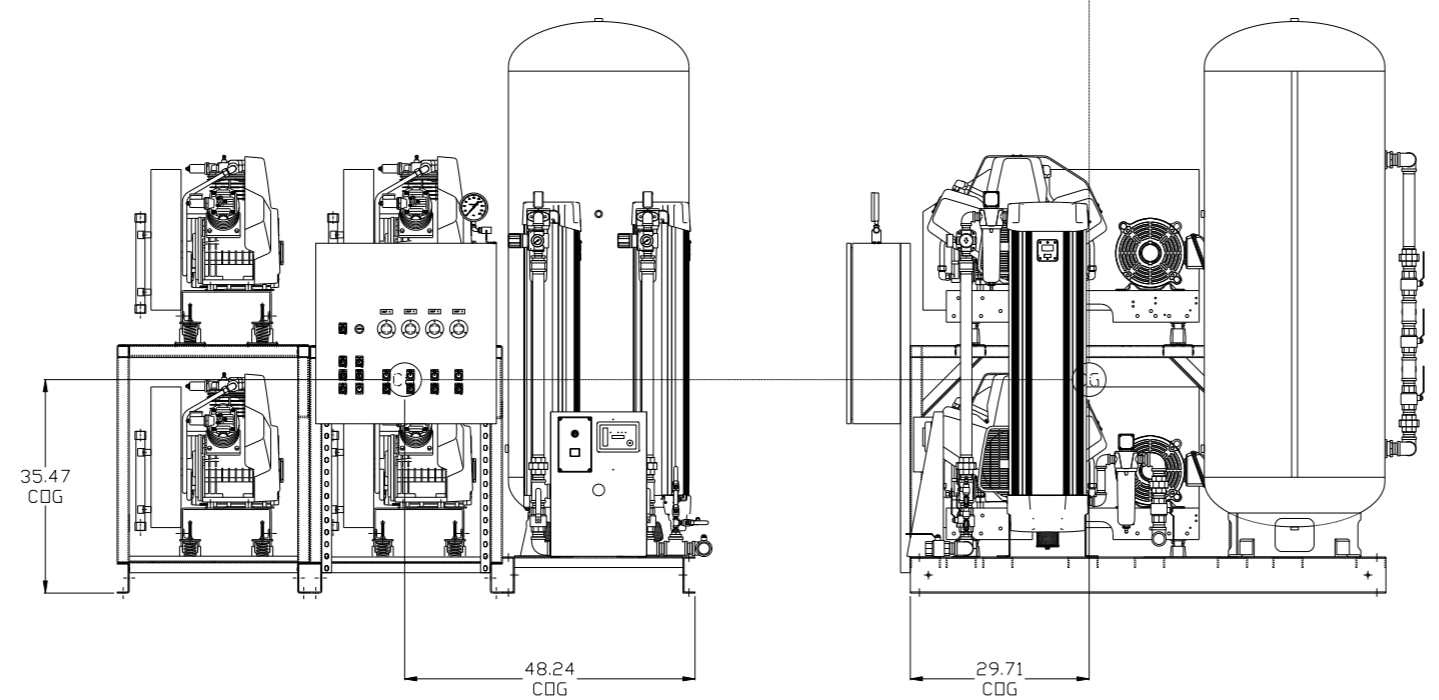
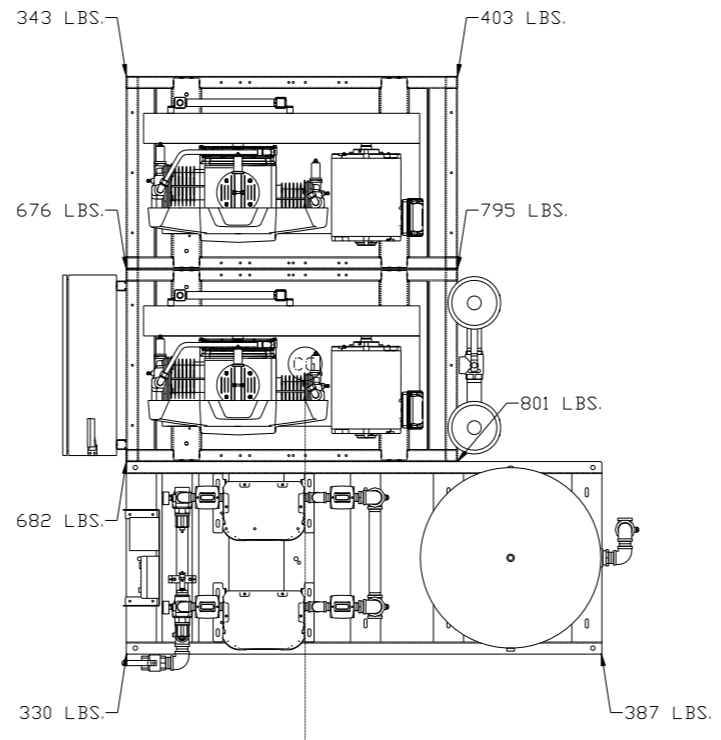
DRYER/TANK SKID:
TOTAL WEIGHT: 1368 LBS
C.D.G. DIMENSIONS
X (FRONT): -15.58"
Y (RIGHT): 43.41"
Z (HEIGHT): 36.69"

(CG) denotes center of gravity

SYMBOL LEGEND ⊖ = MINUS DRAFT ⊕ = PLUS DRAFT TOLERANCES NOT SPECIFIED .xx ± .xxx ± << DEG >> ±		⊕ = ADDITIONAL CONTROL REQ'D HRC = BRINELL HARDNESS Drawings to conform to the current revision of the following ANSI standards: Y14.3 Multi and sectional view dgs. Y14.5M Dimensioning and tolerancing	
AUTOCAD REL2008 INCH		DO NOT SCALE DRAWING FOR DIMENSIONS Sheet 3 of 4 SCALE 1:16	
CONFIDENTIAL DISCLOSURE This drawing is the property of POWEREX, INC. of the SCOTT FETZER COMPANY and subject to return on demand. Its contents are confidential and must not be copied or submitted to outside parties for use or examination.		DRAWN BY AEK	CHECKED BY KMD
MATERIAL N/A		APPROVED BY KMD	MFG/MKTG JJ
PART NAME QUADPLEX DILLESS RECIP. 15HP. 240GAL. BASEMOUNT DUPLX DESICCANT		DATE 12/20/10	DATE 12/20/10
		 150 PRODUCTION DRIVE, HARRISON, OHIO 45030 Ph: 888-769-7979 FAX: (513) 367-3125	
		DWG NO MPQ1508	SIZE D

8 7 6 5 4 3 2 1

REV	ZONE	REVISION	DATE	ECN	NAME	CHKD
K-1	ALL	ADDED SHEETS 3 & 4	12/20/10	22348	AEK	KMD
L-1	ALL	ADDED P&ID SHEETS	9/23/11	22609	AEK	GES
M-1	2 ALL	ADDED/UPDATED FLEX LINES	10/10/12	PXEC0009	AEK	DMS
N-1	ALL	ADDED CO MONITOR TO SYSTEM LAYOUT	12/12/13	PXEC0030	AEK	GES
P-1	2 DS	REMOVED SNUBBER VALVE	03/28/16	PXEC0133	MJD	AEK
Q-1	1,2,4 ALL	UPDATED TO NANO DRYERS	8/10/17	PXEC0174	AEK	GES



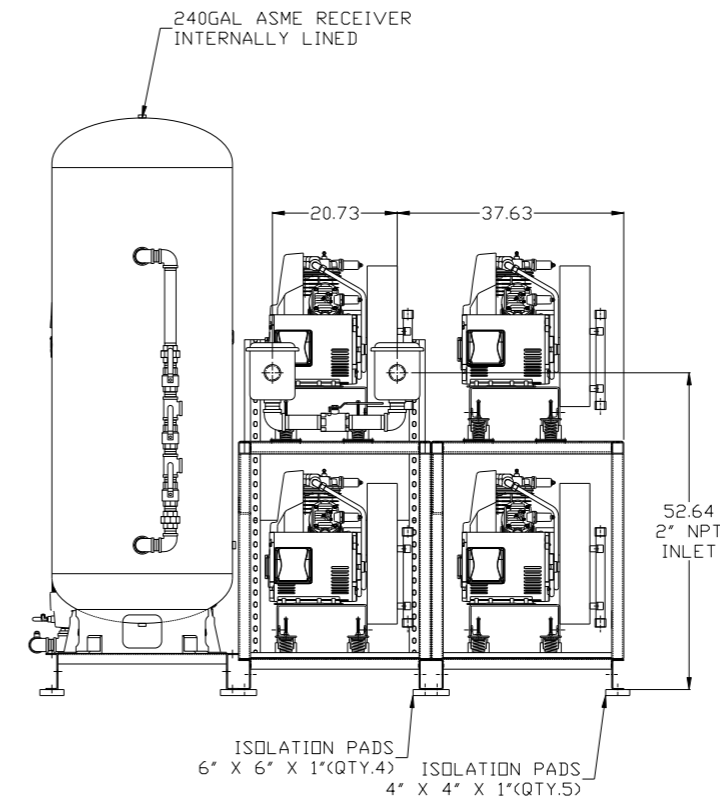
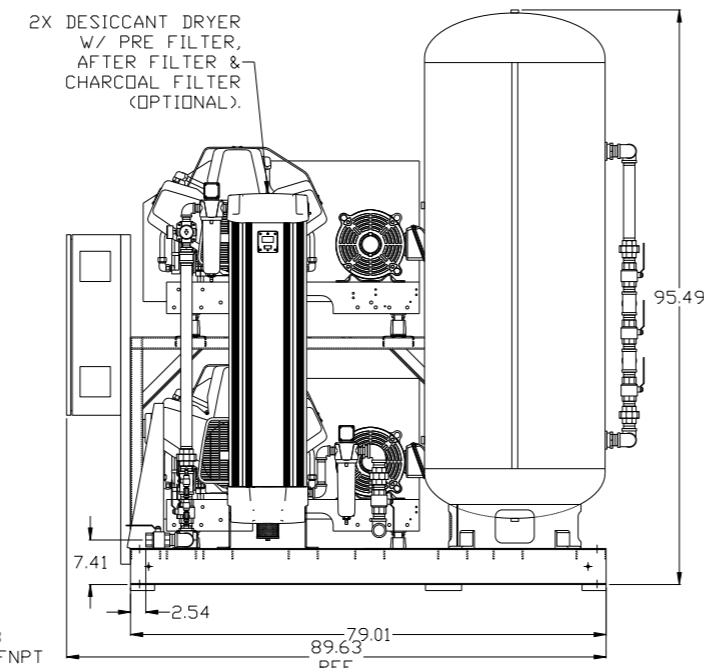
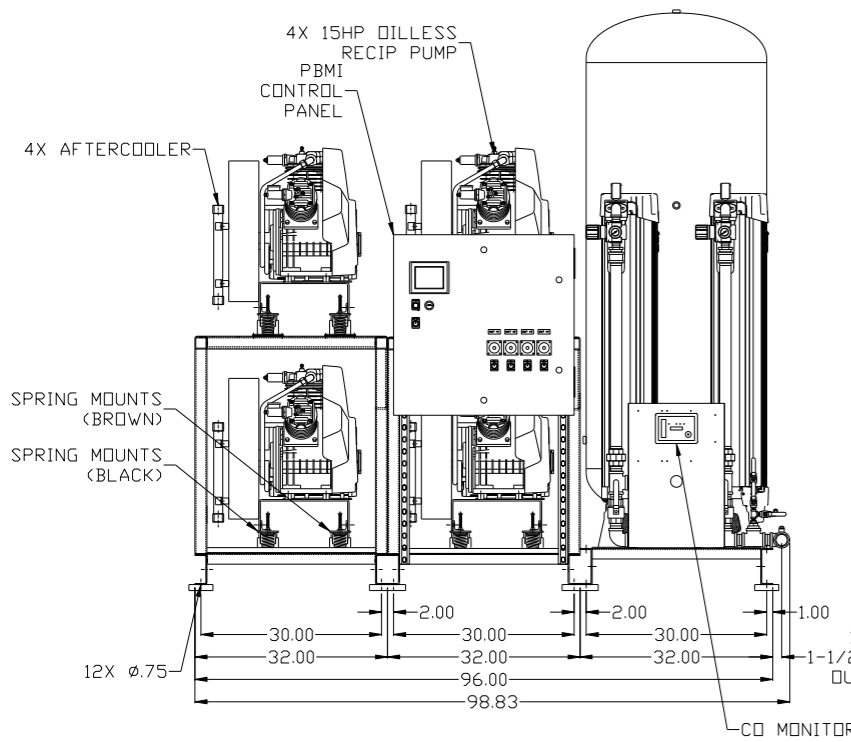
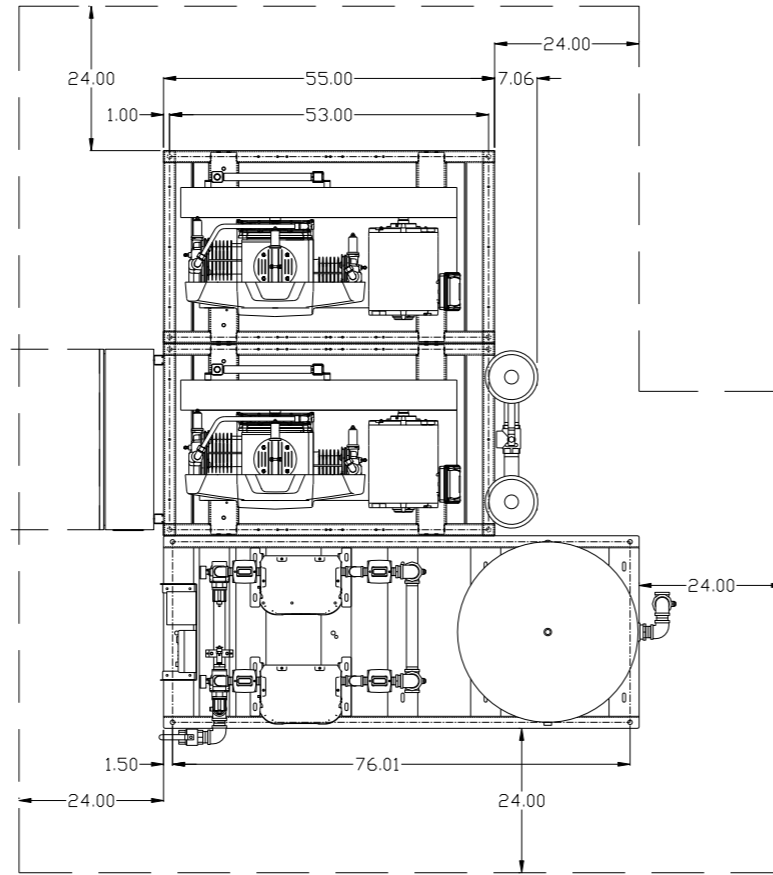
SYSTEM:
 TOTAL WEIGHT: 4417 LBS
 C.O.G. DIMENSIONS
 X (FRONT): -48.24"
 Y (RIGHT): 29.71"
 Z (HEIGHT): 35.47"

(CG) denotes center of gravity

SYMBOL LEGEND ⊖ = MINUS DRAFT ⊕ = PLUS DRAFT		= ADDITIONAL CONTROL REQ'D = BRINELL HARDNESS		Drawings to conform to the current revision of the following ANSI standards: Y14.3 Multi and sectional view dgs. Y14.5M Dimensioning and tolerancing	
TOLERANCES NOT SPECIFIED .XX ± .XXX ± << DEG. > ±		AUTOCAD REL2008 INCH		DO NOT SCALE DRAWING FOR DIMENSIONS SCALE 1:16 Sheet 4 of 4	
CONFIDENTIAL DISCLOSURE This drawing is the property of POWEREX, INC. of the SCOTT FEITZER COMPANY and subject to return on demand. Its contents are confidential and must not be copied or submitted to outside parties for use or examination.		DRAWN BY AEK	CHECKED BY KMD	APPROVED BY KMD	MFG/MKTG JJ
MATERIAL N/A		12/20/10		12/20/10 12/20/10 12/20/10	
PART NAME QUADPLEX DILLESS RECIP. 15HP, 240GAL. BASEMOUNT DUPLEX DESICCANT		DWG NO MPQ1508		SIZE D	

8 7 6 5 4 3 2 1

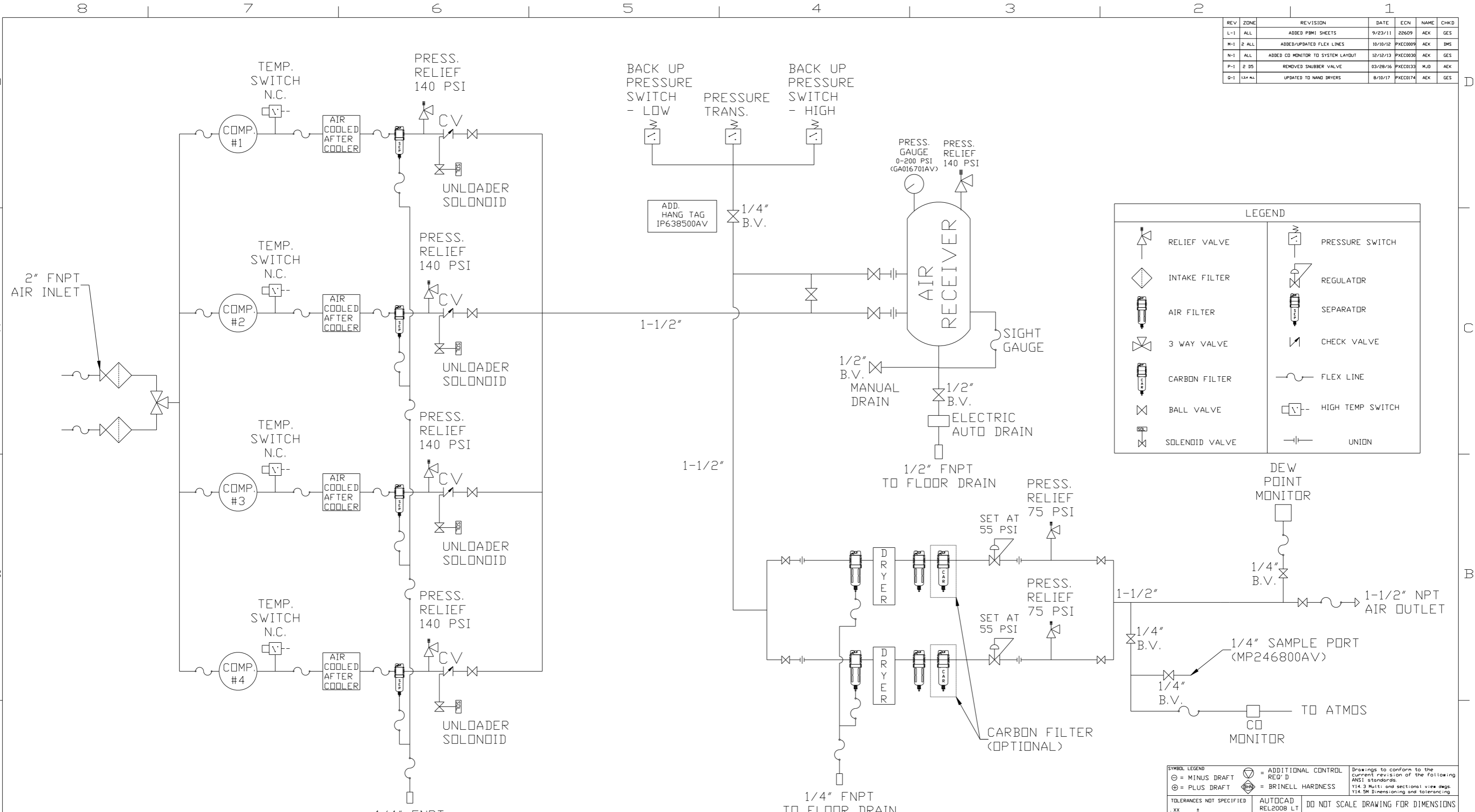
REV	ZONE	REVISION	DATE	ECN	NAME	CHKD
L-1	ALL	ADDED PBMI SHEETS	9/23/11	22609	AEK	GES
M-1	2 ALL	ADDED/UPDATED FLEX LINES	10/10/12	PXEC0009	AEK	DMS
N-1	ALL	ADDED CD MONITOR TO SYSTEM LAYOUT	12/12/13	PXEC0030	AEK	GES
P-1	2 DS	REMOVED SNUBBER VALVE	03/28/16	PXEC0133	MJD	AEK
Q-1	124 ALL	UPDATED TO NANO DRYERS	8/10/17	PXEC0174	AEK	GES



NOTE: SYSTEM DESIGNED IN COMPLIANCE WITH U.S. NFPA '99, LATEST EDITION.

SYMBOL LEGEND		= ADDITIONAL CONTROL REQ'D		Drawings to conform to the current revision of the following ANSI standards:	
⊖	MINUS DRAFT	⊕	PLUS DRAFT	⊖	Y14.3 Multi and sectional view dgs.
⊕	PLUS DRAFT	⊖	MINUS DRAFT	⊖	Y14.5M Dimensioning and tolerancing
⊖	MINUS DRAFT	⊕	PLUS DRAFT	⊖	Y14.5M Dimensioning and tolerancing
TOLERANCES NOT SPECIFIED		AUTOCAD REL2008		DO NOT SCALE DRAWING FOR DIMENSIONS	
.XX	±	INCH		Sheet 1 of 4	
.XXX	±	SCALE		1:16	
<< DEG >>	±				
CONFIDENTIAL DISCLOSURE		DRAWN BY		CHECKED BY	
This drawing is the property of POWEREX, INC. of the SCOTT FEITZER COMPANY and subject to return on demand. Its contents are confidential and must not be copied or submitted to outside parties for use or examination.		AEK		GES	
		9/23/11		9/23/11	
		9/23/11		9/23/11	
MATERIAL		N/A		APPROVED BY	
				MFG/MKTG	
				RJR	
PART NAME		QUADPLEX DILLESS RECIP. 15HP. 240GAL. BASEMOUNT DUPLEX DESICCANT		SIZE	
		DWG NO		MPQ1508	
				D	

REV	ZONE	REVISION	DATE	ECN	NAME	CHKD
L-1	ALL	ADDED PBM1 SHEETS	9/23/11	22609	AEK	GES
M-1	2 ALL	ADDED/UPDATED FLEX LINES	10/10/12	PXEC0009	AEK	DMS
N-1	ALL	ADDED CO MONITOR TO SYSTEM LAYOUT	12/12/13	PXEC0030	AEK	GES
P-1	2 DS	REMOVED SNUBBER VALVE	03/28/16	PXEC0133	MJD	AEK
Q-1	1,2,4 ALL	UPDATED TO NANO DRYERS	8/10/17	PXEC0174	AEK	GES



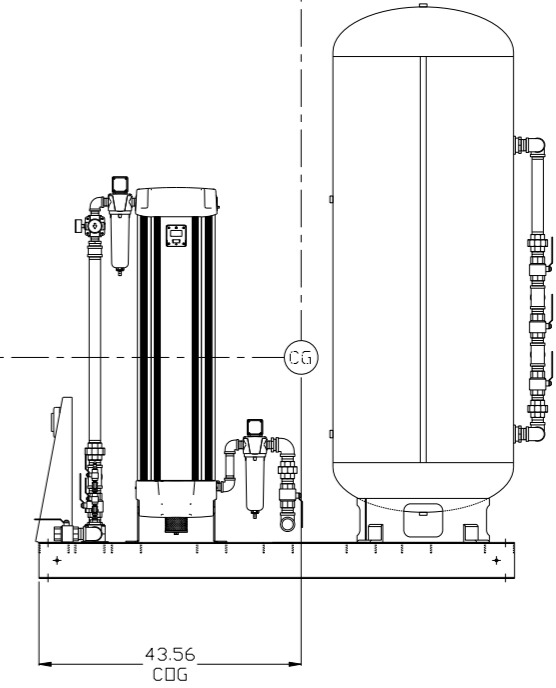
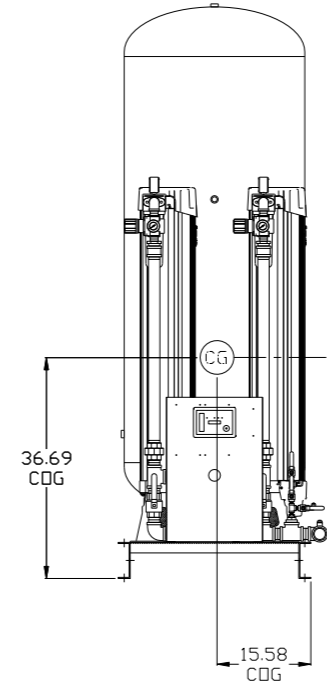
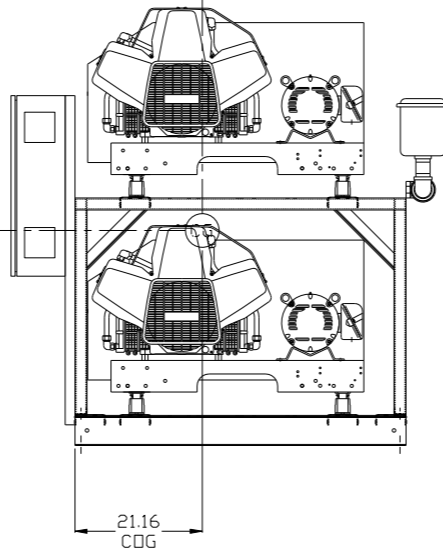
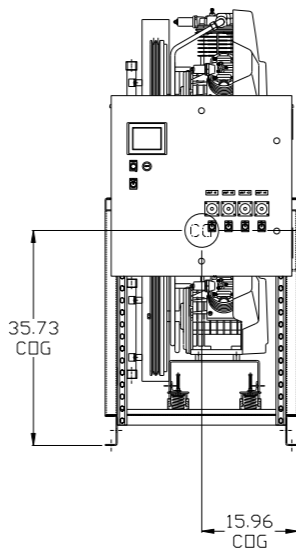
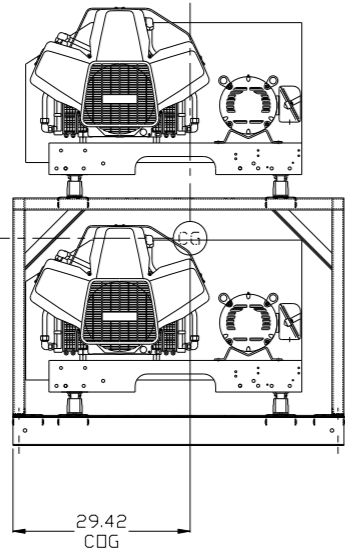
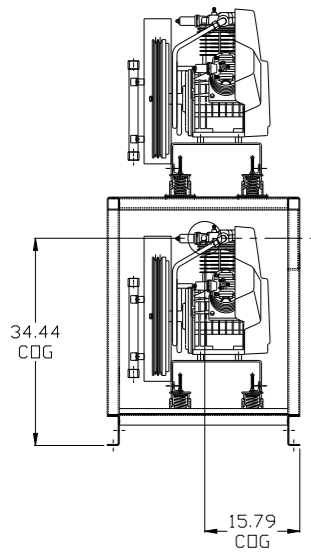
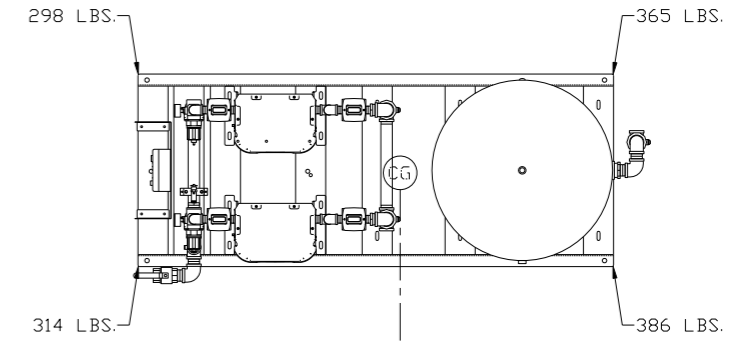
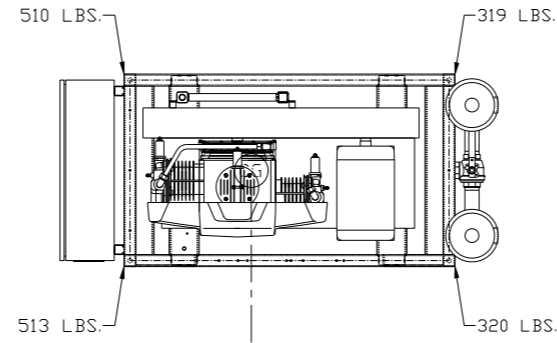
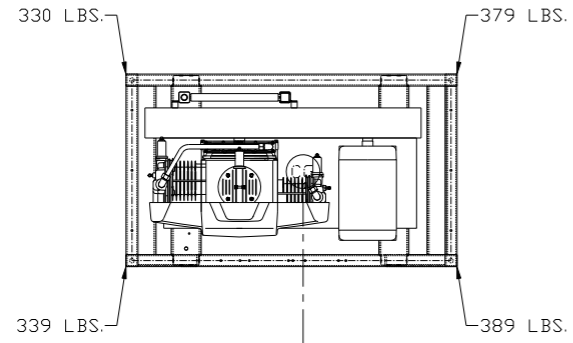
	RELIEF VALVE		PRESSURE SWITCH
	INTAKE FILTER		REGULATOR
	AIR FILTER		SEPARATOR
	3 WAY VALVE		CHECK VALVE
	CARBON FILTER		FLEX LINE
	BALL VALVE		HIGH TEMP SWITCH
	SOLENOID VALVE		UNION

- NOTES:
- 1) IF LAG 3 COMPRESSOR IS ENERGIZED ALARM WILL OCCUR.
 - 2) PIPING TO THE INLET BY OTHERS AND TO BE PER NFPA99
 - 3) INSTRUMENTS DOWN STREAM OF SOURCE VALVE TO BE SUPPLIED BY OTHERS.

SYMBOL LEGEND		= ADDITIONAL CONTROL REQ'D		Drawings to conform to the current revision of the following ANSI standards:	
= MINUS DRAFT		= BRINELL HARDNESS		Y14.3 Multi and sectional view dgs.	
= PLUS DRAFT				Y14.5M Dimensioning and tolerancing	
TOLERANCES NOT SPECIFIED	AUTOCAD REL2008 LT	DO NOT SCALE DRAWING FOR DIMENSIONS		SCALE	
.XX ±		Sheet 2 of 4		1:16	
.XXX ±		DRAWN BY		CHECKED BY	
<Z(DEG) ±		AEK		GES	
CONFIDENTIAL DISCLOSURE		APPROVED BY		MFG/MKTG	
This drawing is the property of POWEREX, INC. of the SCOTT FETZER COMPANY and subject to return on demand. Its contents are confidential and must not be copied or submitted to outside parties for use or examination.		9/23/11		9/23/11	
MATERIAL		N/A		APPROVED BY	
PART NAME		MEDICAL QUADPLEX OIL-LESS RECIP FLOW SCHEMATIC		AEK	
DWG NO		MPQ1508		SIZE	
		D			



REV	ZONE	REVISION	DATE	ECN	NAME	CHKD
L-1	ALL	ADDED PBM1 SHEETS	9/23/11	22609	AEK	GES
M-1	2 ALL	ADDED/UPDATED FLEX LINES	10/10/12	PXEC0009	AEK	DMS
N-1	ALL	ADDED CO MONITOR TO SYSTEM LAYOUT	12/12/13	PXEC0030	AEK	GES
P-1	2 DS	REMOVED SNUBBER VALVE	03/28/16	PXEC0133	MJD	AEK
Q-1	1,2,4 ALL	UPDATED TO NANO DRYERS	8/10/17	PXEC0174	AEK	GES



PUMP SKID:
TOTAL WEIGHT: 1437 LBS
C.D.G. DIMENSIONS
X (FRONT): -15.79"
Y (RIGHT): 25.09"
Z (HEIGHT): 34.44"

PANEL/PUMP SKID:
TOTAL WEIGHT: 1662 LBS
C.D.G. DIMENSIONS
X (FRONT): -15.96"
Y (RIGHT): 21.16"
Z (HEIGHT): 35.73"

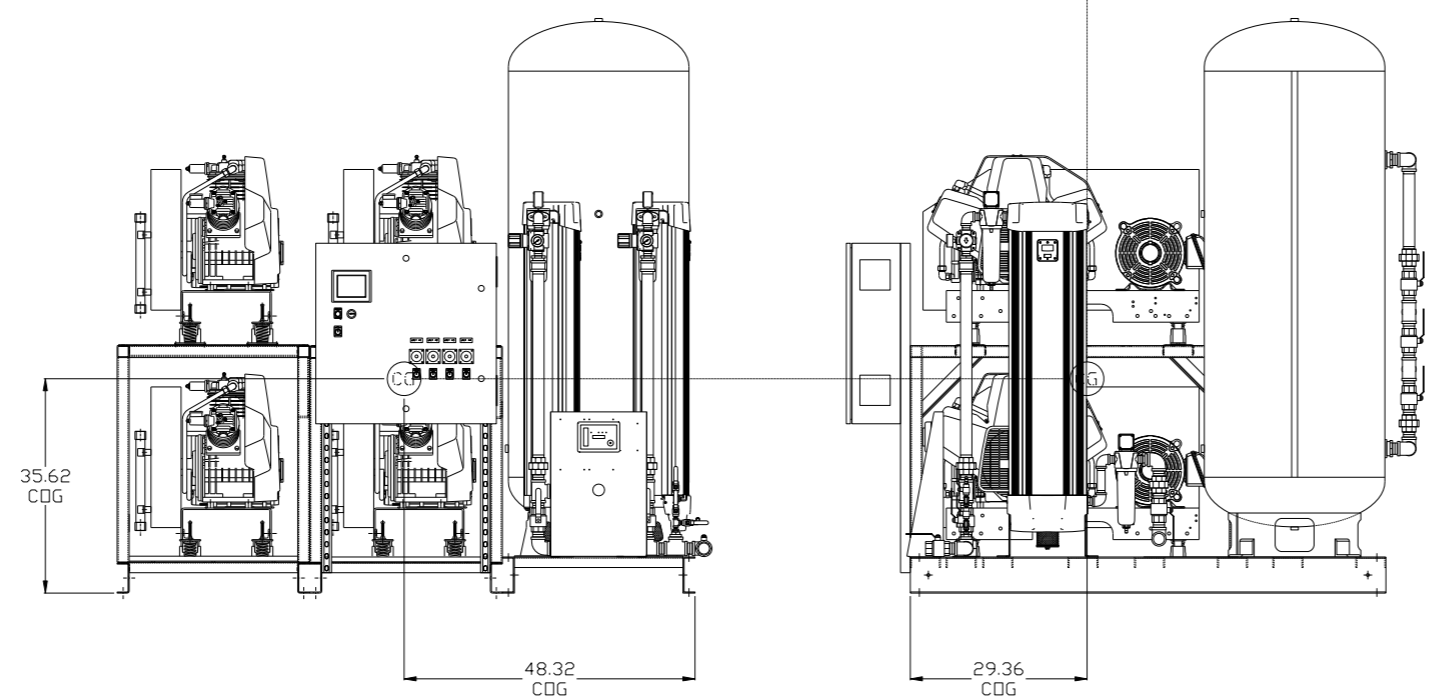
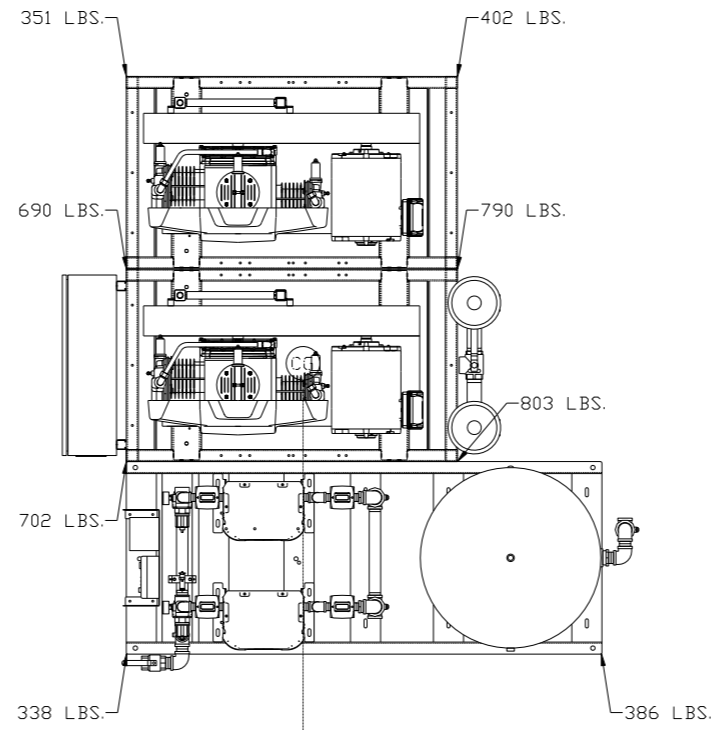
DRYER/TANK SKID:
TOTAL WEIGHT: 1363 LBS
C.D.G. DIMENSIONS
X (FRONT): -15.58"
Y (RIGHT): 43.56"
Z (HEIGHT): 36.73"

CG denotes center of gravity

SYMBOL LEGEND ⊖ = MINUS DRAFT ⊕ = PLUS DRAFT TOLERANCES NOT SPECIFIED XX ± XXX ± << DEG >> ±		= ADDITIONAL CONTROL REQ'D = BRINELL HARDNESS		Drawings to conform to the current revision of the following ANSI standards: Y14.3 Multi and sectional view dgs. Y14.5M Dimensioning and tolerancing	
AUTOCAD REL2008 INCH		DO NOT SCALE DRAWING FOR DIMENSIONS Sheet 3 of 4 SCALE 1:16			
CONFIDENTIAL DISCLOSURE This drawing is the property of POWEREX, INC. of the SCOTT FETZER COMPANY and subject to return on demand. Its contents are confidential and must not be copied or submitted to outside parties for use or examination.		DRAWN BY AEK	CHECKED BY GES	APPROVED BY ENGINEERING DMS	MFG/MKTG RJR
MATERIAL N/A		9/23/11	9/23/11	9/23/11	9/23/11
PART NAME QUADPLEX DILLESS RECIP. 15HP, 240GAL. BASEMOUNT DUPLX DESICCANT		 150 PRODUCTION DRIVE, HARRISON, OHIO 45030 Ph: 888-769-7979 FAX: (513) 367-3125		DWG NO MPQ1508	SIZE D

8 7 6 5 4 3 2 1

REV	ZONE	REVISION	DATE	ECN	NAME	CHKD
L-1	ALL	ADDED PBM1 SHEETS	9/23/11	22609	AEK	GES
M-1	2 ALL	ADDED/UPDATED FLEX LINES	10/10/12	PXEC0009	AEK	DMS
N-1	ALL	ADDED CG MONITOR TO SYSTEM LAYOUT	12/12/13	PXEC0030	AEK	GES
P-1	2 DS	REMOVED SNUBBER VALVE	03/28/16	PXEC0133	MJD	AEK
Q-1	1,2,4 ALL	UPDATED TO NANO DRYERS	8/10/17	PXEC0174	AEK	GES



SYSTEM:
 TOTAL WEIGHT: 4462 LBS
 C.O.G. DIMENSIONS
 X (FRONT): -48.32"
 Y (RIGHT): 29.36"
 Z (HEIGHT): 35.62"

CG denotes center of gravity

SYMBOL LEGEND ⊖ = MINUS DRAFT ⊕ = PLUS DRAFT		⊕ = ADDITIONAL CONTROL REQ'D HRC = BRINELL HARDNESS		Drawings to conform to the current revision of the following ANSI standards: Y14.3 Multi and sectional view dgs. Y14.5M Dimensioning and tolerancing	
TOLERANCES NOT SPECIFIED .XX ± .XXX ± << DEG > ±		AUTOCAD REL2008 INCH		DO NOT SCALE DRAWING FOR DIMENSIONS Sheet 4 of 4 SCALE 1:16	
CONFIDENTIAL DISCLOSURE This drawing is the property of POWEREX, INC. of the SCOTT FEITZER COMPANY and subject to return on demand. Its contents are confidential and must not be copied or submitted to outside parties for use or examination.		DRAWN BY AEK	CHECKED BY GES	APPROVED BY ENGINEERING DMS	MFG/MKTG RJR
MATERIAL N/A		9/23/11	9/23/11	9/23/11	9/23/11
PART NAME QUADPLEX DILLESS RECIP. 15HP, 240GAL. BASEMOUNT DUPLEX DESICCANT		150 PRODUCTION DRIVE, HARRISON, OHIO 45030 Ph: 888-769-7979 FAX: (513) 367-3125		DWG NO MPQ1508	

8 7 6 5 4 3 2 1