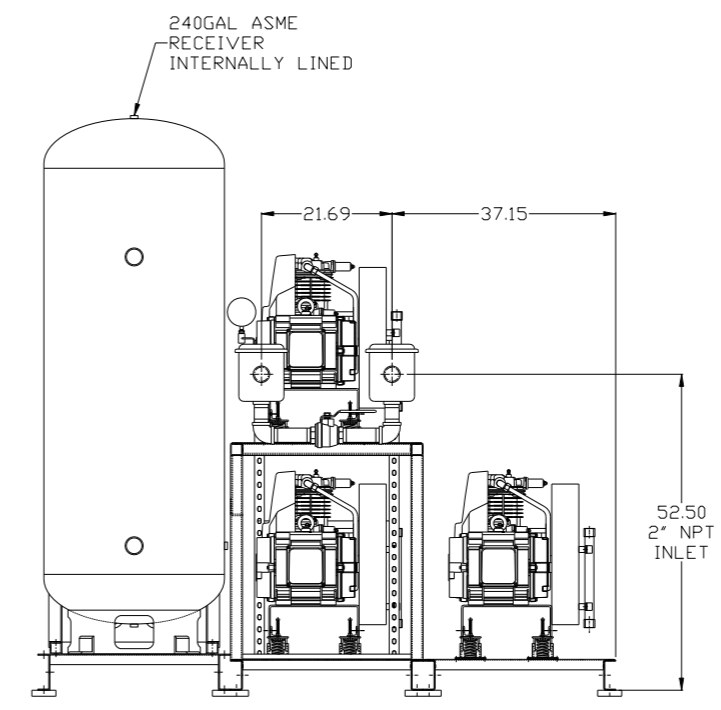
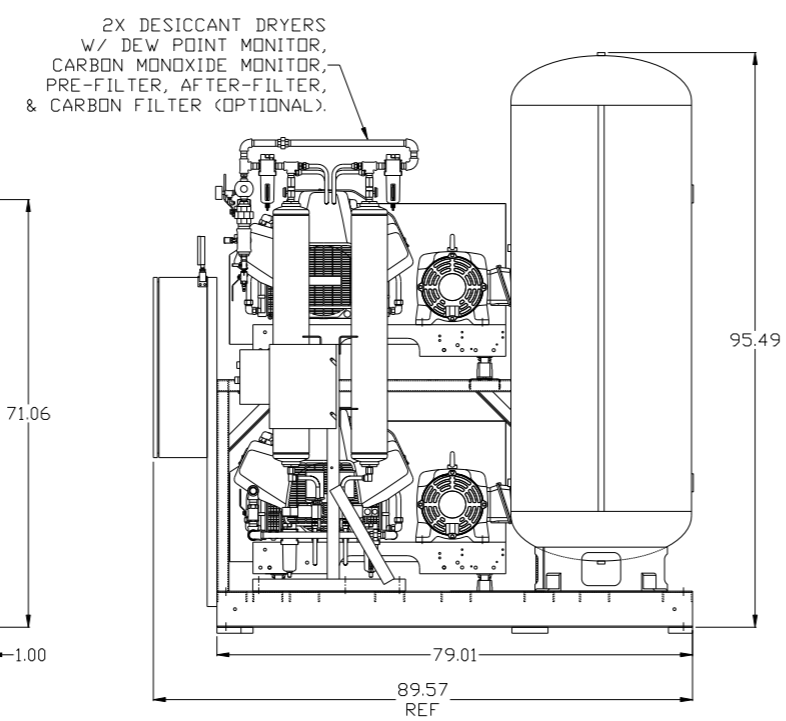
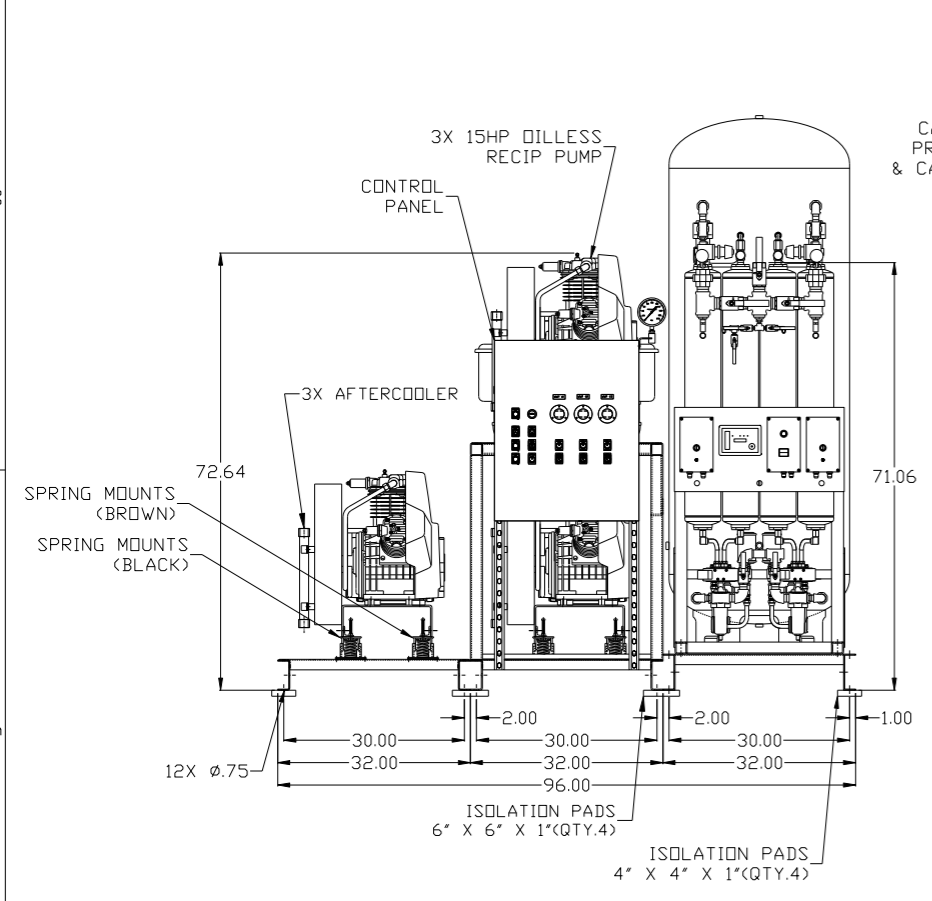
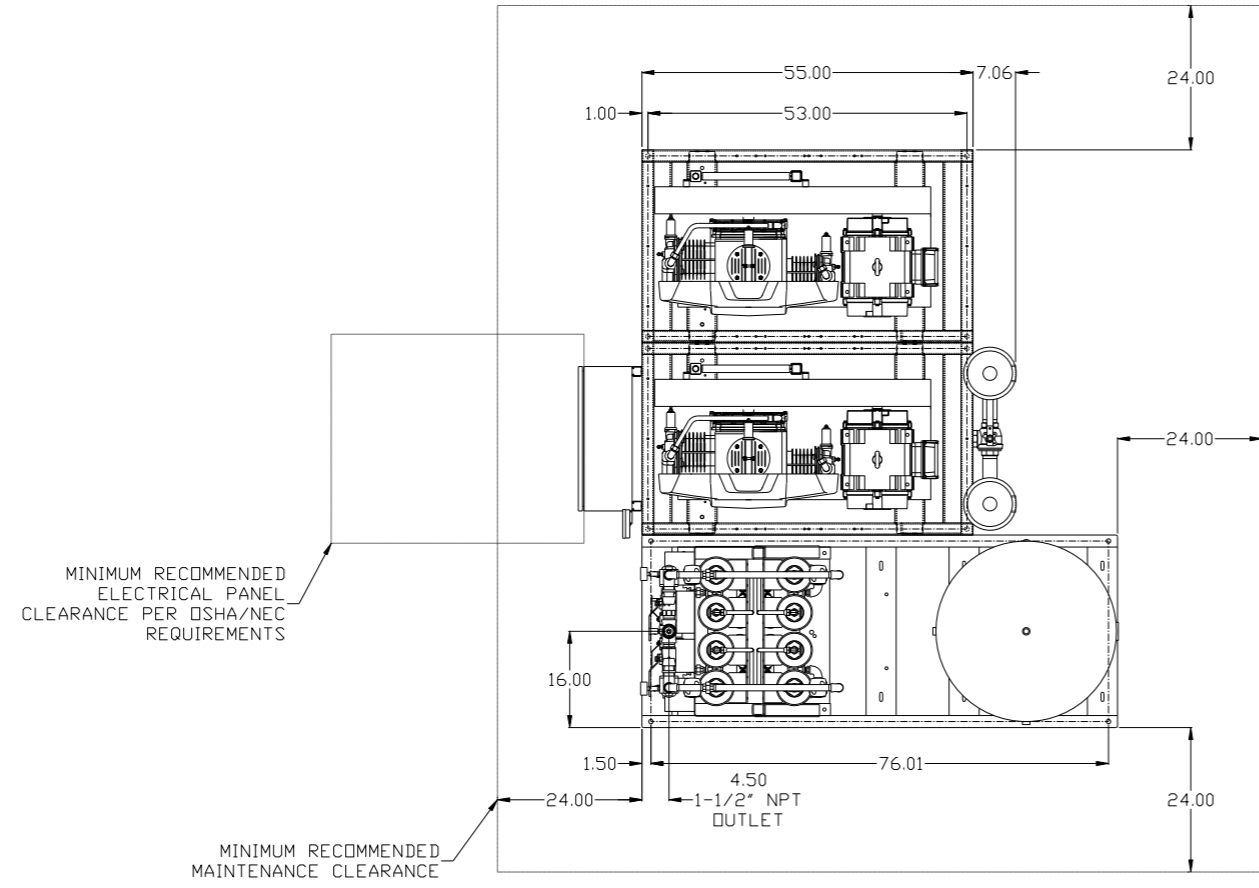


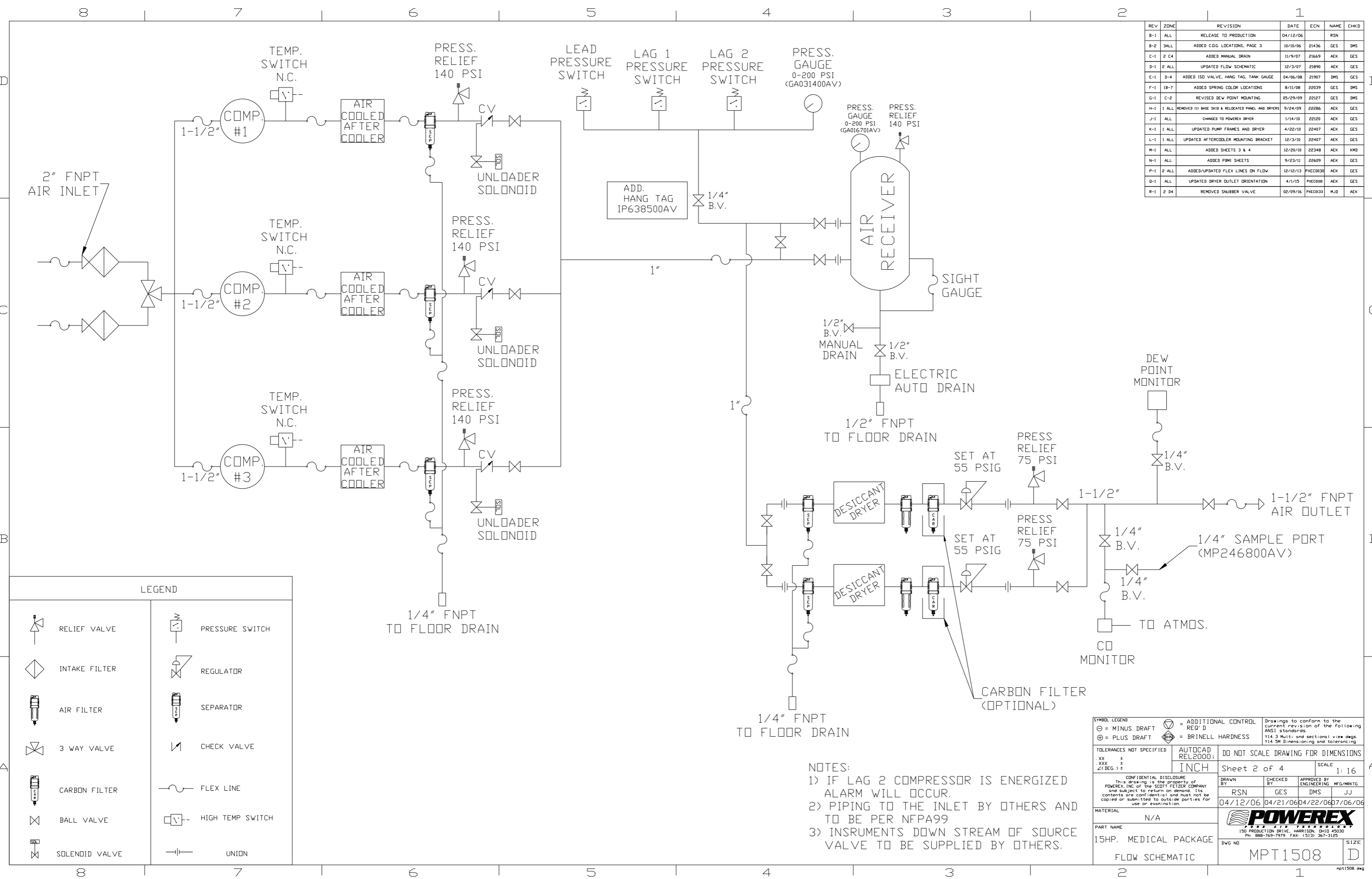
REV	ZONE	REVISION	DATE	ECN	NAME	CHKD
B-1	ALL	RELEASE TO PRODUCTION	04/12/06		RSN	
B-2	3ALL	ADDED CDG. LOCATIONS, PAGE 3	10/10/06	21436	GES	DMS
C-1	2 C4	ADDED MANUAL DRAIN	11/9/07	21669	AEK	GES
D-1	2 ALL	UPDATED FLOW SCHEMATIC	12/3/07	21890	AEK	GES
E-1	D-4	ADDED ISD VALVE, HANG TAG, TANK GAUGE	04/06/08	21907	DMS	GES
F-1	1B-7	ADDED SPRING COLOR LOCATIONS	8/11/08	22039	GES	DMS
G-1	C-2	REVISED DEW POINT MOUNTING	05/29/09	22127	GES	DMS
H-1	1 ALL	REMOVED (1) BASE SKID & RELOCATED PANEL AND DRYERS	9/24/09	22286	AEK	GES
J-1	ALL	CHANGED TO POWEREX DRYER	1/14/10	22120	AEK	GES
K-1	1 ALL	UPDATED PUMP FRAMES AND DRYER	4/22/10	22407	AEK	GES
L-1	1 ALL	UPDATED AFTERCOOLER MOUNTING BRACKET	12/3/10	22407	AEK	GES
M-1	ALL	ADDED SHEETS 3 & 4	12/20/10	22348	AEK	KMB
N-1	ALL	ADDED PBMI SHEETS	9/23/11	22609	AEK	GES
P-1	2 ALL	ADDED/UPDATED FLEX LINES ON FLOW	12/12/13	PXEC0030	AEK	GES
Q-1	ALL	UPDATED DRYER OUTLET ORIENTATION	4/1/15	PXEC0100	AEK	GES
R-1	2 D4	REMOVED SNUBBER VALVE	02/09/16	PXEC0133	MJD	AEK



NOTE: SYSTEM DESIGNED IN COMPLIANCE WITH U.S. NFPA '99, LATEST EDITION

<b>SYMBOL LEGEND</b> ⊖ = MINUS DRAFT    ⊕ = PLUS DRAFT ⊕ = ADDITIONAL CONTROL REQ'D ⊕ = BRINELL HARDNESS		Drawings to conform to the current revision of the following ANSI standards: Y14.3 Multi and sectional view dgs. Y14.5M Dimensioning and tolerancing	
<b>TOLERANCES NOT SPECIFIED</b> .XX ± .XXX ± <<DEG> ±		<b>DO NOT SCALE DRAWING FOR DIMENSIONS</b> AUTOCAD REL2000: INCH Sheet 1 of 4    SCALE: 1:16	
<b>CONFIDENTIAL DISCLOSURE</b> This drawing is the property of POWEREX, INC. of the SCOTT FEITZER COMPANY and subject to return on demand. Its contents are confidential and must not be copied or submitted to outside parties for use or examination.			
<b>DRAWN BY</b> RSN		<b>CHECKED BY</b> GES	
<b>APPROVED BY</b> DMS		<b>ENGINEERING MFG/MKTG</b> JJ	
<b>MATERIAL</b> N/A		<b>DATE</b> 04/12/06 04/21/06 04/22/06 07/06/06	
<b>PART NAME</b> TRIPLEX OILLESS RECIP.		<b>POWEREX</b> 150 PRODUCTION DRIVE, HARRISON, OHIO 45030 Ph: 888-769-7979 Fax: (513) 367-3125	
<b>DWG NO</b> 15HP, 240 GAL. BASEMOUNT		<b>SIZE</b> MPT1508	

REV	ZONE	REVISION	DATE	ECN	NAME	CHKD
B-1	ALL	RELEASE TO PRODUCTION	04/12/06		RSN	
B-2	3 ALL	ADDED CDG. LOCATIONS, PAGE 3	10/10/06	21436	GES	DMS
C-1	2 C4	ADDED MANUAL DRAIN	11/9/07	21669	AEK	GES
D-1	2 ALL	UPDATED FLOW SCHEMATIC	12/3/07	21890	AEK	GES
E-1	D-4	ADDED ISD VALVE, HANG TAG, TANK GAUGE	04/06/08	21907	DMS	GES
F-1	1B-7	ADDED SPRING COLOR LOCATIONS	8/11/08	22039	GES	DMS
G-1	C-2	REVISED DEW POINT MOUNTING	05/29/09	22127	GES	DMS
H-1	1 ALL	REMOVED (1) BASE SKID & RELOCATED PANEL AND DRIVERS	9/24/09	22286	AEK	GES
J-1	ALL	CHANGED TO POWEREX DRYER	1/14/10	22120	AEK	GES
K-1	1 ALL	UPDATED PUMP FRAMES AND DRYER	4/22/10	22407	AEK	GES
L-1	1 ALL	UPDATED AFTERCOOLER MOUNTING BRACKET	12/3/10	22407	AEK	GES
M-1	ALL	ADDED SHEETS 3 & 4	12/20/10	22348	AEK	KMB
N-1	ALL	ADDED PBMI SHEETS	9/23/11	22609	AEK	GES
P-1	2 ALL	ADDED/UPDATED FLEX LINES ON FLOW	12/12/13	PXEC0030	AEK	GES
Q-1	ALL	UPDATED DRYER OUTLET ORIENTATION	4/1/15	PXEC0100	AEK	GES
R-1	2 D4	REMOVED SMUBBER VALVE	02/09/16	PXEC0133	MJD	AEK

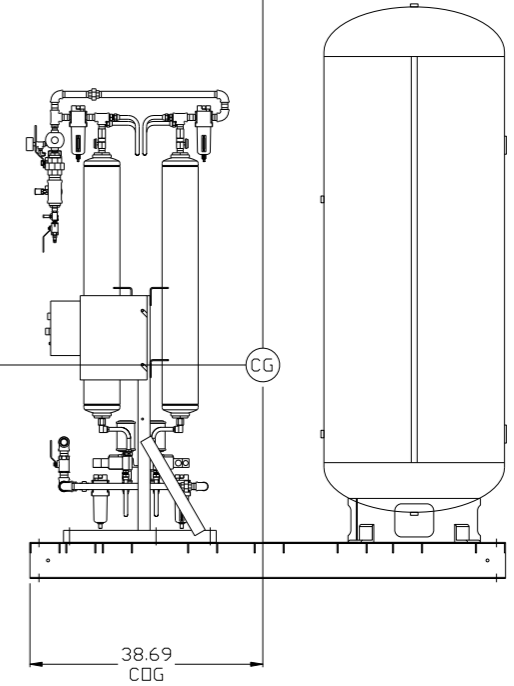
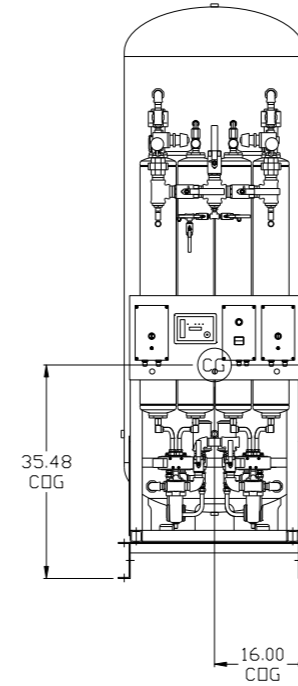
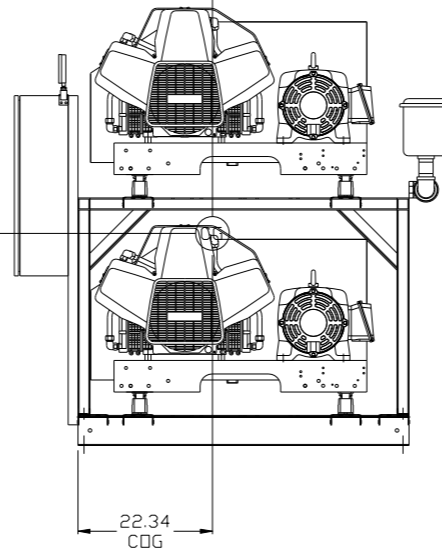
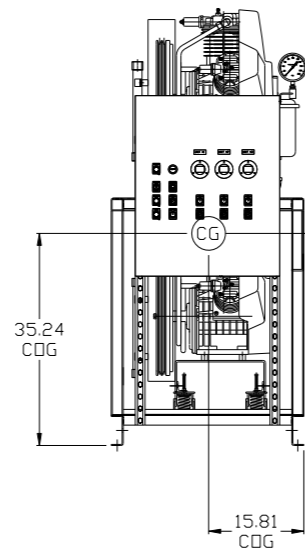
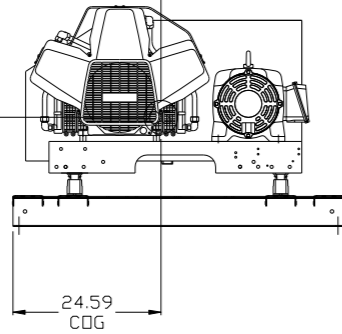
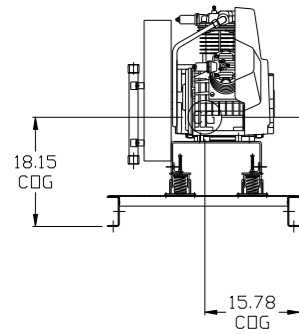
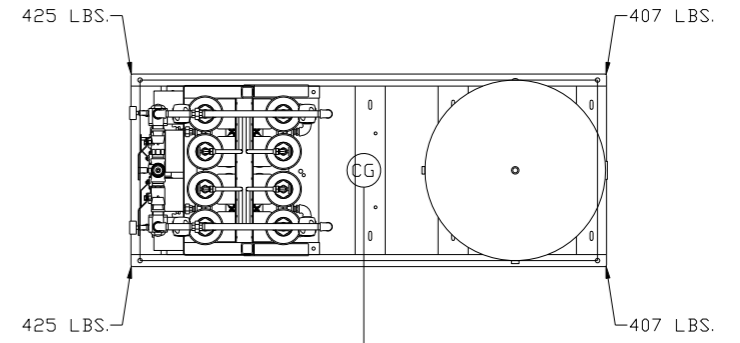
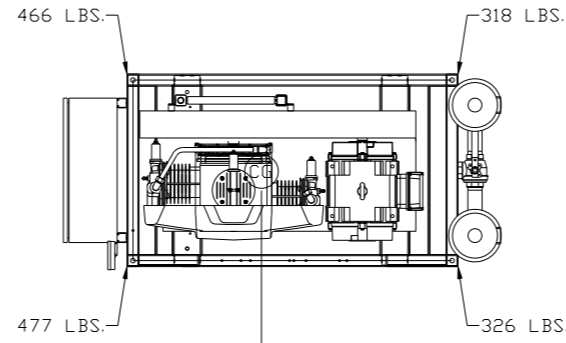
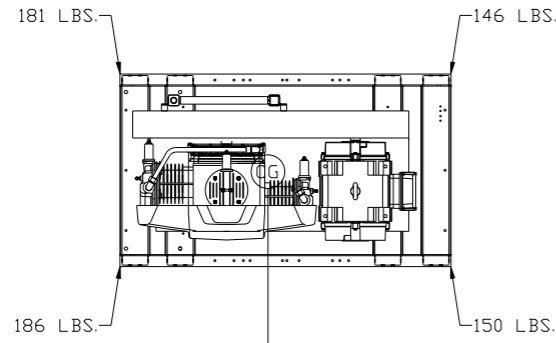


LEGEND	
	RELIEF VALVE
	INTAKE FILTER
	AIR FILTER
	3 WAY VALVE
	CARBON FILTER
	BALL VALVE
	SOLENOID VALVE
	PRESSURE SWITCH
	REGULATOR
	SEPARATOR
	CHECK VALVE
	FLEX LINE
	HIGH TEMP SWITCH
	UNION

- NOTES:
- 1) IF LAG 2 COMPRESSOR IS ENERGIZED ALARM WILL OCCUR.
  - 2) PIPING TO THE INLET BY OTHERS AND TO BE PER NFPA99
  - 3) INSTRUMENTS DOWN STREAM OF SOURCE VALVE TO BE SUPPLIED BY OTHERS.

SYMBOL LEGEND			ADDITIONAL CONTROL REQ'D	Drawings to conform to the current revision of the following ANSI standards:
	MINUS DRAFT		BRINELL HARDNESS	Y14.3 Multi and sectional view dsgs. Y14.5M Dimensioning and tolerancing
TOLERANCES NOT SPECIFIED		AUTOCAD REL2000:	DO NOT SCALE DRAWING FOR DIMENSIONS	
.XX ±	.XXX ±	INCH	Sheet 2 of 4	SCALE 1:16
CONFIDENTIAL DISCLOSURE This drawing is the property of POWEREX, INC. OF THE SCOTT FETZER COMPANY and subject to return on demand. Its contents are confidential and must not be copied or submitted to outside parties for use or examination.				
DRAWN BY		CHECKED BY	APPROVED BY	
RSN		GES	DMS JJ	
DATE		DATE		
04/12/06		04/21/06 04/22/06 07/06/06		
MATERIAL		N/A		
PART NAME		15HP. MEDICAL PACKAGE		
FLOW SCHEMATIC		DVG NO		
		MPT1508		
		SIZE D		

REV	ZONE	REVISION	DATE	ECN	NAME	CHKD
M-1	ALL	ADDED SHEETS 3 & 4	12/20/10	22348	AEK	KMD
N-1	ALL	ADDED P&ID SHEETS	9/23/11	22609	AEK	GES
P-1	2 ALL	ADDED/UPDATED FLEX LINES ON FLOW	12/12/13	PKEC0030	AEK	GES
Q-1	ALL	UPDATED DRYER OUTLET ORIENTATION	4/1/15	PKEC0100	AEK	GES
R-1	2 B4	REMOVED SNUBBER VALVE	02/09/16	PKEC0133	MJD	AEK



SINGLE PUMP SKID:  
TOTAL WEIGHT: 663 LBS  
C.O.G. DIMENSIONS  
X (FRONT): -15.78"  
Y (RIGHT): 24.59"  
Z (HEIGHT): 18.15"

PANEL/PUMP SKID:  
TOTAL WEIGHT: 1587 LBS  
C.O.G. DIMENSIONS  
X (FRONT): -15.81"  
Y (RIGHT): 22.34"  
Z (HEIGHT): 35.24"

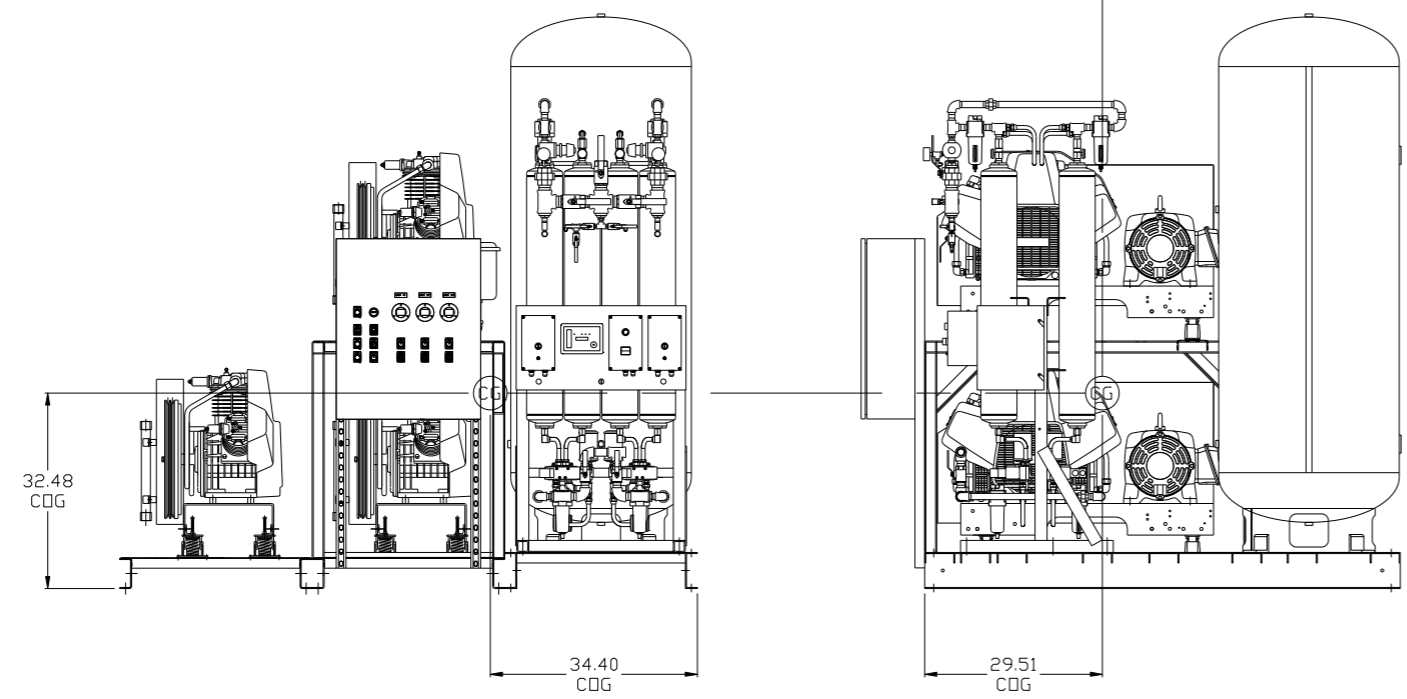
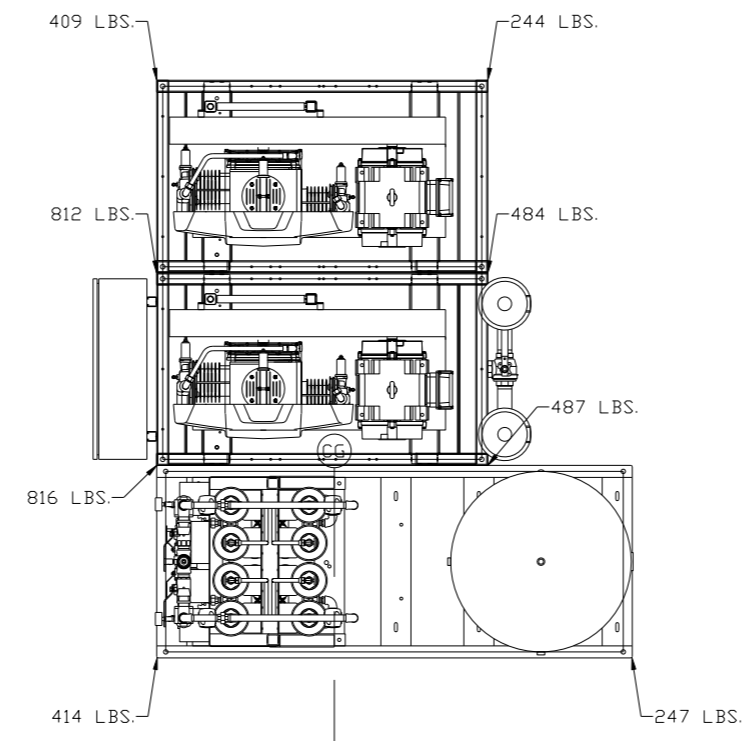
DRYER/TANK SKID:  
TOTAL WEIGHT: 1664 LBS  
C.O.G. DIMENSIONS  
X (FRONT): -16"  
Y (RIGHT): 38.69"  
Z (HEIGHT): 35.48"

CG denotes center of gravity

SYMBOL LEGEND		= ADDITIONAL CONTROL REQ'D		Drawings to conform to the current revision of the following ANSI standards:	
⊖	MINUS DRAFT	⊕	PLUS DRAFT	⊖	ANSI Y14.3 Multi and sectional view dgs.
⊕	PLUS DRAFT	⊖	MINUS DRAFT	⊖	ANSI Y14.5M Dimensioning and tolerancing
TOLERANCES NOT SPECIFIED		AUTOCAD REL2008		DO NOT SCALE DRAWING FOR DIMENSIONS	
.XX ±		INCH		Sheet 3 of 4	
.XXX ±				SCALE 1:16	
<DEG> ±					
CONFIDENTIAL DISCLOSURE					
This drawing is the property of POWEREX, INC. of the SCOTT FETZER COMPANY and subject to return on demand. Its contents are confidential and must not be copied or submitted to outside parties for use or examination.					
DRAWN BY		CHECKED BY		APPROVED BY	
AEK		KMD		KMD JJ	
12/20/10		12/20/10		12/20/10 12/20/10	
MATERIAL		N/A		 150 PRODUCTION DRIVE, HARRISON, OHIO 45030 Ph: 888-769-7979 FAX: (513) 367-3125	
PART NAME		TRIPLEX DILLESS RECIP.		DWG NO	
15HP, 240 GAL. BASEMOUNT				MPT1508	
				SIZE D	

8 7 6 5 4 3 2 1

REV	ZONE	REVISION	DATE	ECN	NAME	CHKD
M-1	ALL	ADDED SHEETS 3 & 4	12/20/10	22348	AEK	KMD
N-1	ALL	ADDED P&ID SHEETS	9/23/11	22609	AEK	GES
P-1	2 ALL	ADDED/UPDATED FLEX LINES ON FLOW	12/12/13	P&EC0030	AEK	GES
Q-1	ALL	UPDATED DRYER OUTLET ORIENTATION	4/1/15	P&EC0100	AEK	GES



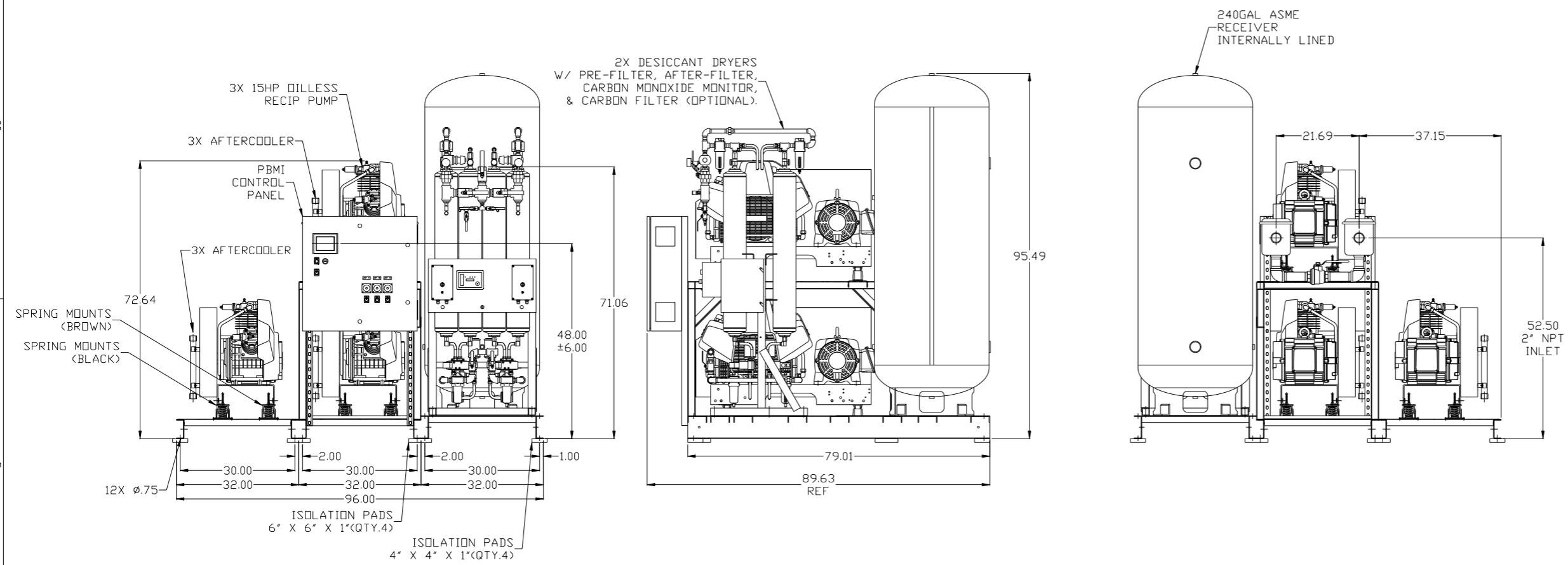
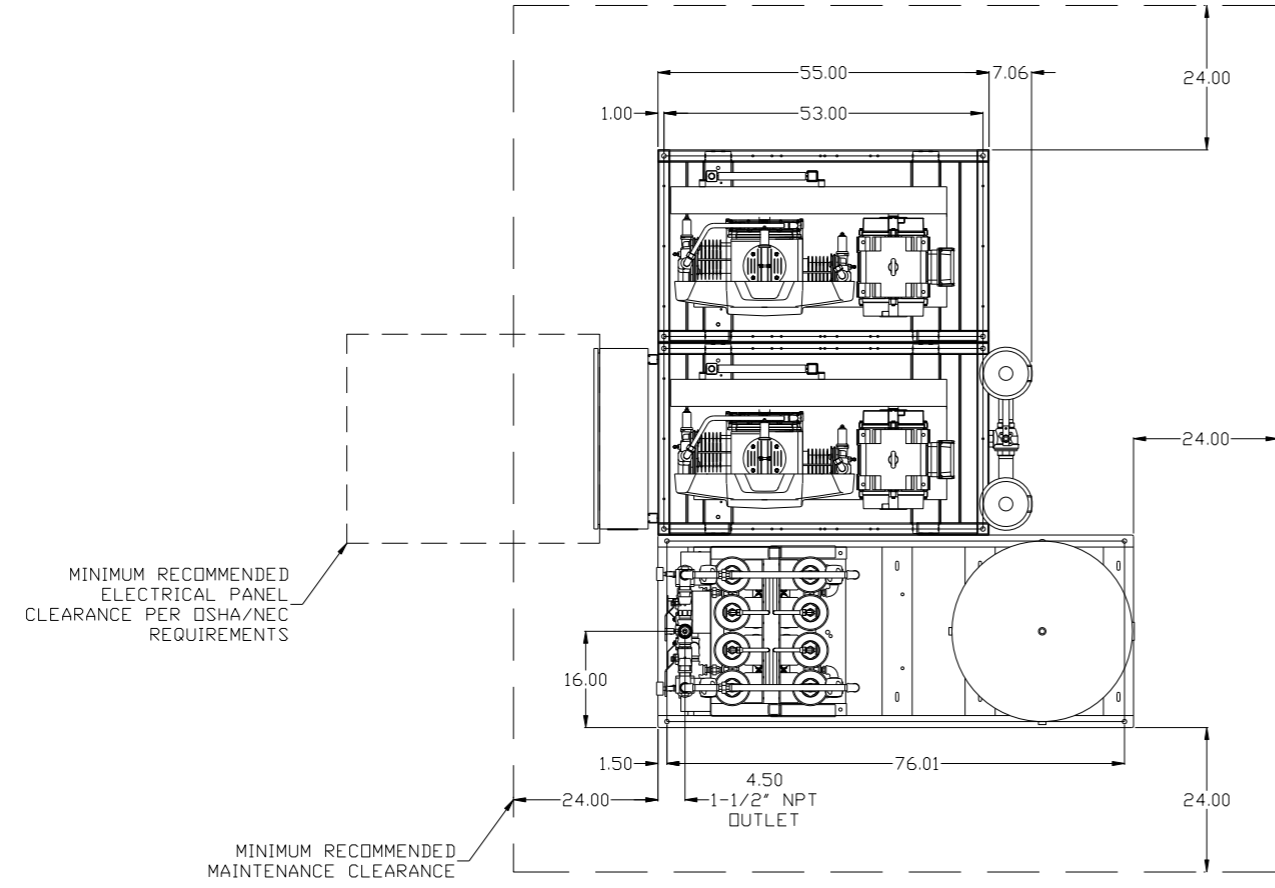
SYSTEM:  
 TOTAL WEIGHT: 3913 LBS  
 C.O.G. DIMENSIONS  
 X (FRONT): -16.25"  
 Y (RIGHT): 29.51"  
 Z (HEIGHT): 32.48"

CG denotes center of gravity

SYMBOL LEGEND ⊖ = MINUS DRAFT ⊕ = PLUS DRAFT ⊕ = ADDITIONAL CONTROL REQ'D HRC = BRINELL HARDNESS		Drawings to conform to the current revision of the following ANSI standards: Y14.3 Multi and sectional view dgs. Y14.5M Dimensioning and tolerancing	
TOLERANCES NOT SPECIFIED .XX ± .XXX ± <<DEG> ±		AUTOCAD REL2008 INCH DO NOT SCALE DRAWING FOR DIMENSIONS Sheet 4 of 4 SCALE 1:16	
CONFIDENTIAL DISCLOSURE This drawing is the property of POWEREX, INC. of the SCOTT FETZER COMPANY and subject to return on demand. Its contents are confidential and must not be copied or submitted to outside parties for use or examination.		DRAWN BY: AEK CHECKED BY: KMD APPROVED BY: KMD, JJ 12/20/10   12/20/10   12/20/10   12/20/10	
MATERIAL: N/A		POWEREX 150 PRODUCTION DRIVE, HARRISON, OHIO 45030 Ph: 888-769-7979 FAX: (513) 367-3125	
PART NAME: TRIPLEX DILLESS RECIP. 15HP, 240 GAL. BASEMOUNT		DWG NO: MPT1508 SIZE: D	

8 7 6 5 4 3 2 1

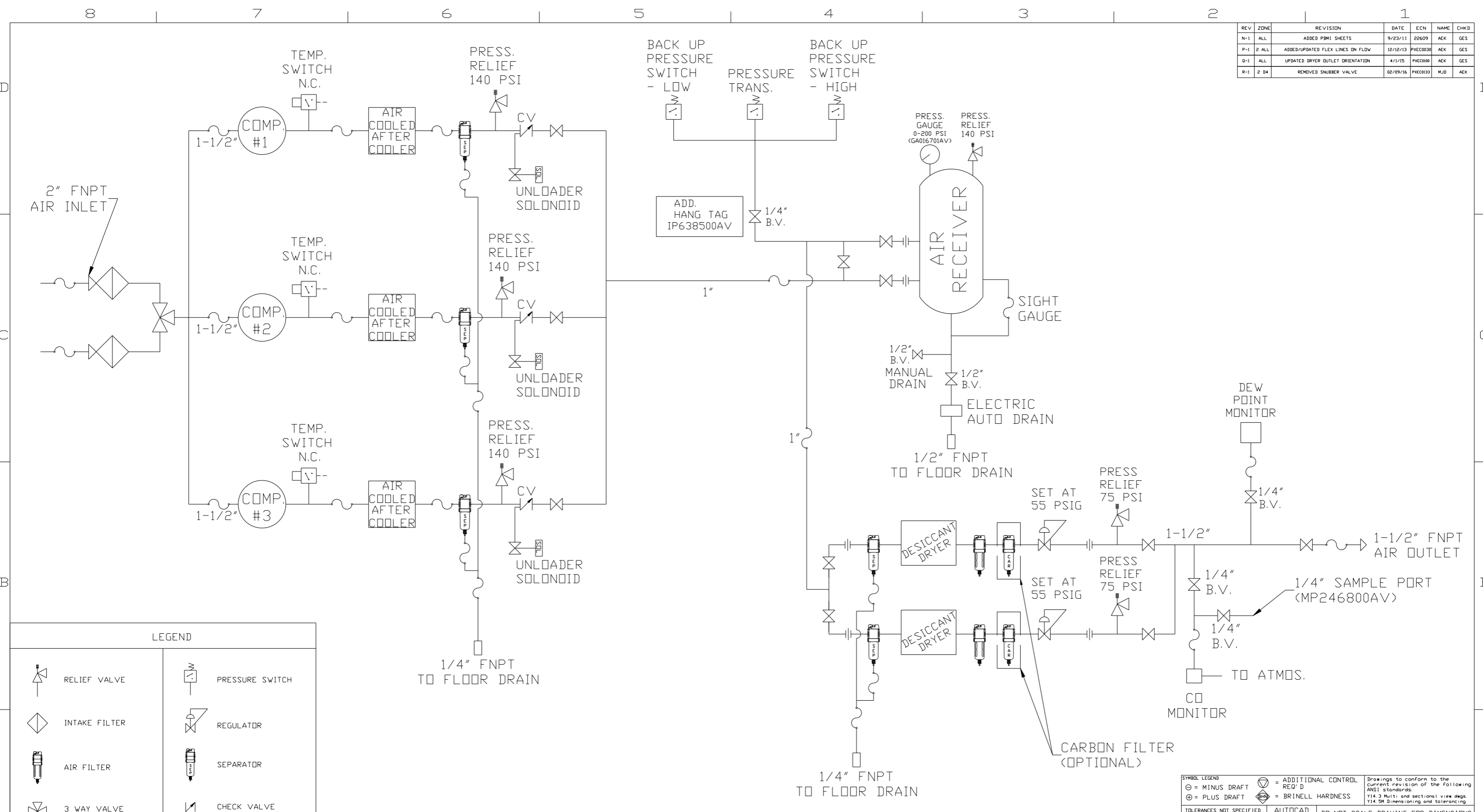
REV	ZONE	REVISION	DATE	ECN	NAME	CHKD
N-1	ALL	ADDED PBMI SHEETS	9/23/11	22609	AEK	GES
P-1	2 ALL	ADDED/UPDATED FLEX LINES ON FLOW	12/12/13	PKEC0030	AEK	GES
Q-1	ALL	UPDATED DRYER OUTLET ORIENTATION	4/1/15	PKEC0080	AEK	GES
R-1	2 D4	REMOVED SNUBBER VALVE	02/09/16	PKEC0133	MJD	AEK



NOTE: SYSTEM DESIGNED IN COMPLIANCE WITH U.S. NFPA '99, LATEST EDITION

SYMBOL LEGEND		⊕ = MINUS DRAFT	⊖ = PLUS DRAFT	⊕ = ADDITIONAL CONTROL REQ'D	⊖ = BRINELL HARDNESS	Drawings to conform to the current revision of the following ANSI standards: Y14.3 Multi and sectional view dsgs. Y14.5M Dimensioning and tolerancing
TOLERANCES NOT SPECIFIED		.XX ±	.XXX ±	<< DEG > ±	AUTOCAD REL2008 LT	DO NOT SCALE DRAWING FOR DIMENSIONS
CONFIDENTIAL DISCLOSURE This drawing is the property of POWEREX, INC. of the SCOTT FETZER COMPANY and subject to return on demand. Its contents are confidential and must not be copied or submitted to outside parties for use or examination.		DRAWN BY AEK		CHECKED BY GES	APPROVED BY DMS	SCALE 1:16
MATERIAL N/A		9/23/11		9/23/11	9/23/11	9/23/11
PART NAME TRIPLEX DILLESS RECIP.		15HP. 240 GAL. BASEMOUNT		DWG NO MPT1508		SIZE D

REV	ZONE	REVISION	DATE	ECN	NAME	CHKD
N-1	ALL	ADDED PBM1 SHEETS	9/23/11	22609	AEK	GES
P-1	2 ALL	ADDED/UPDATED FLEX LINES ON FLOW	12/12/13	PXEC0030	AEK	GES
Q-1	ALL	UPDATED DRYER OUTLET ORIENTATION	4/1/15	PXEC0080	AEK	GES
R-1	2 D4	REMOVED SNUBBER VALVE	02/09/16	PXEC0133	MJD	AEK

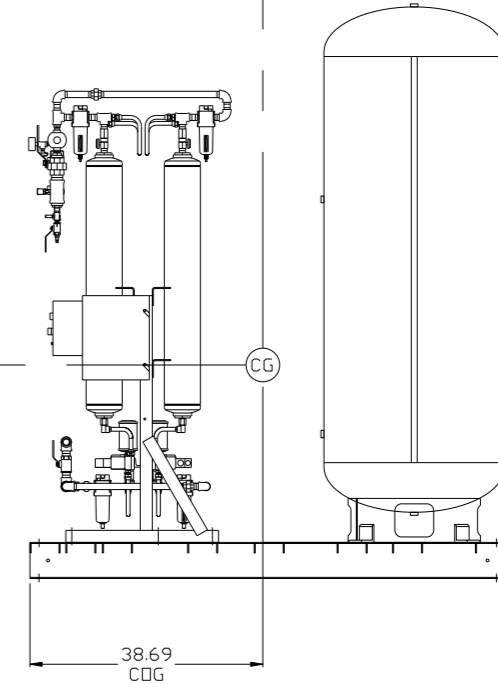
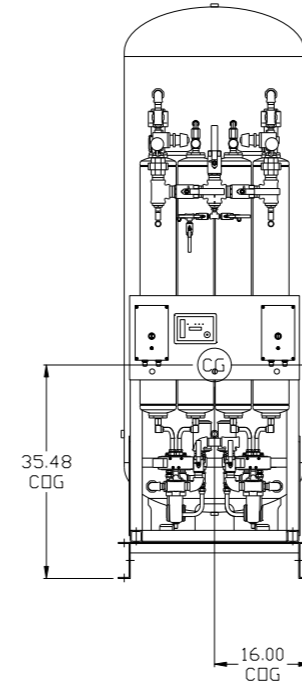
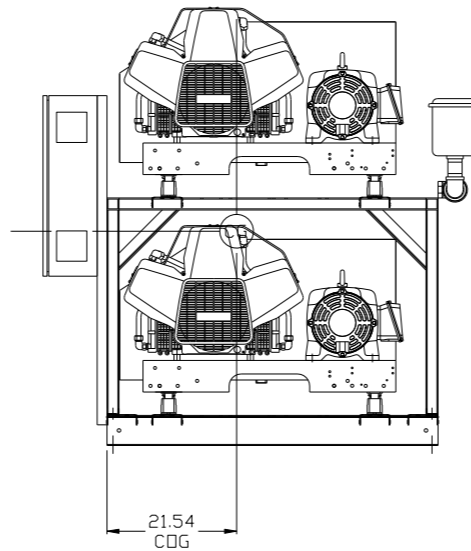
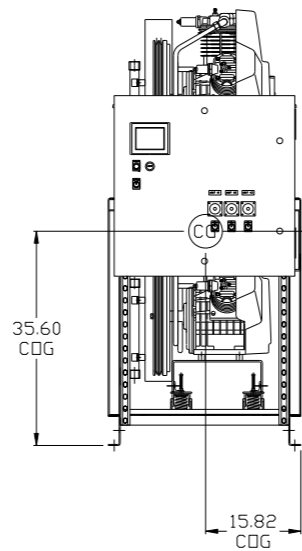
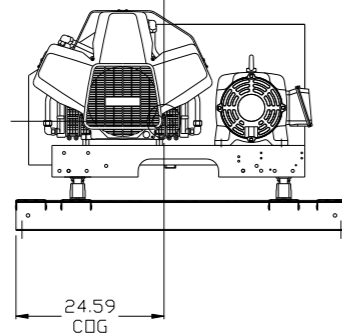
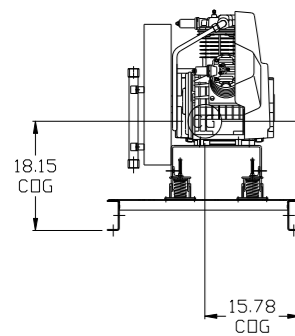
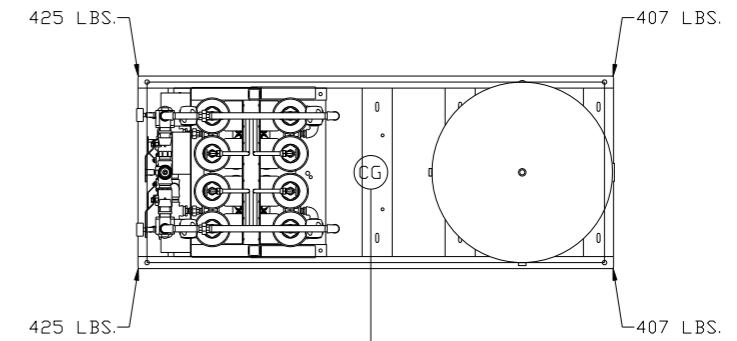
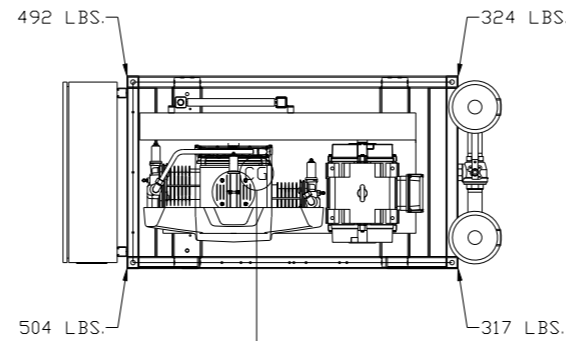
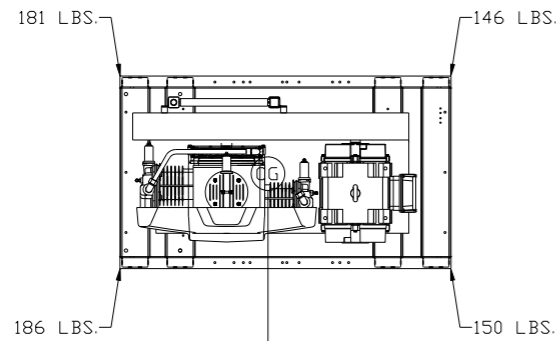


LEGEND	
	RELIEF VALVE
	INTAKE FILTER
	AIR FILTER
	3 WAY VALVE
	CARBON FILTER
	BALL VALVE
	SOLENOID VALVE
	PRESSURE SWITCH
	REGULATOR
	SEPARATOR
	CHECK VALVE
	FLEX LINE
	HIGH TEMP SWITCH
	UNION

- NOTES:
- 1) IF LAG 2 COMPRESSOR IS ENERGIZED ALARM WILL OCCUR.
  - 2) PIPING TO THE INLET BY OTHERS AND TO BE PER NFPA99
  - 3) INSTRUMENTS DOWN STREAM OF SOURCE VALVE TO BE SUPPLIED BY OTHERS.

SYMBOL LEGEND ⊖ = MINUS DRAFT ⊕ = PLUS DRAFT <math>\angle</math> (DEG) =		= ADDITIONAL CONTROL REQ'D = BRINELL HARDNESS	Drawings to conform to the current revision of the following ANSI standards: Y14.3 Multi and sectional view dgs. Y14.5M Dimensioning and tolerancing
TOLERANCES NOT SPECIFIED .XX ± .XXX ± <math>\angle</math> (DEG) ±	AUTOCAD REL2008 LT INCH	DO NOT SCALE DRAWING FOR DIMENSIONS Sheet 2 of 4 SCALE 1:16	
CONFIDENTIAL DISCLOSURE This drawing is the property of POWEREX, INC. of the SCOTT FETZER COMPANY and subject to return on demand. Its contents are confidential and must not be copied or submitted to outside parties for use or examination.		DRAWN BY AEK	CHECKED BY GES
MATERIAL N/A		APPROVED BY DMS	MFG/MKTG RJR
PART NAME 15HP. MEDICAL PACKAGE FLOW SCHEMATIC		DATE 9/23/11	DATE 9/23/11
DVG NO MPT1508		DATE 9/23/11	
SIZE D		DATE 9/23/11	

REV	ZONE	REVISION	DATE	ECN	NAME	CHKD
N-1	ALL	ADDED PBM1 SHEETS	9/23/11	22609	AEK	GES
P-1	2 ALL	ADDED/UPDATED FLEX LINES ON FLOW	12/12/13	PKEC0030	AEK	GES
Q-1	ALL	UPDATED DRYER OUTLET ORIENTATION	4/1/15	PKEC0080	AEK	GES
R-1	2 D4	REMOVED SNUBBER VALVE	02/09/16	PKEC0133	MJD	AEK



SINGLE PUMP SKID:  
TOTAL WEIGHT: 663 LBS  
C.O.G. DIMENSIONS  
X (FRONT): 15.78"  
Y (RIGHT): 24.59"  
Z (HEIGHT): 18.15"

PANEL/PUMP SKID:  
TOTAL WEIGHT: 1637 LBS  
C.O.G. DIMENSIONS  
X (FRONT): 15.81"  
Y (RIGHT): 21.54"  
Z (HEIGHT): 35.60"

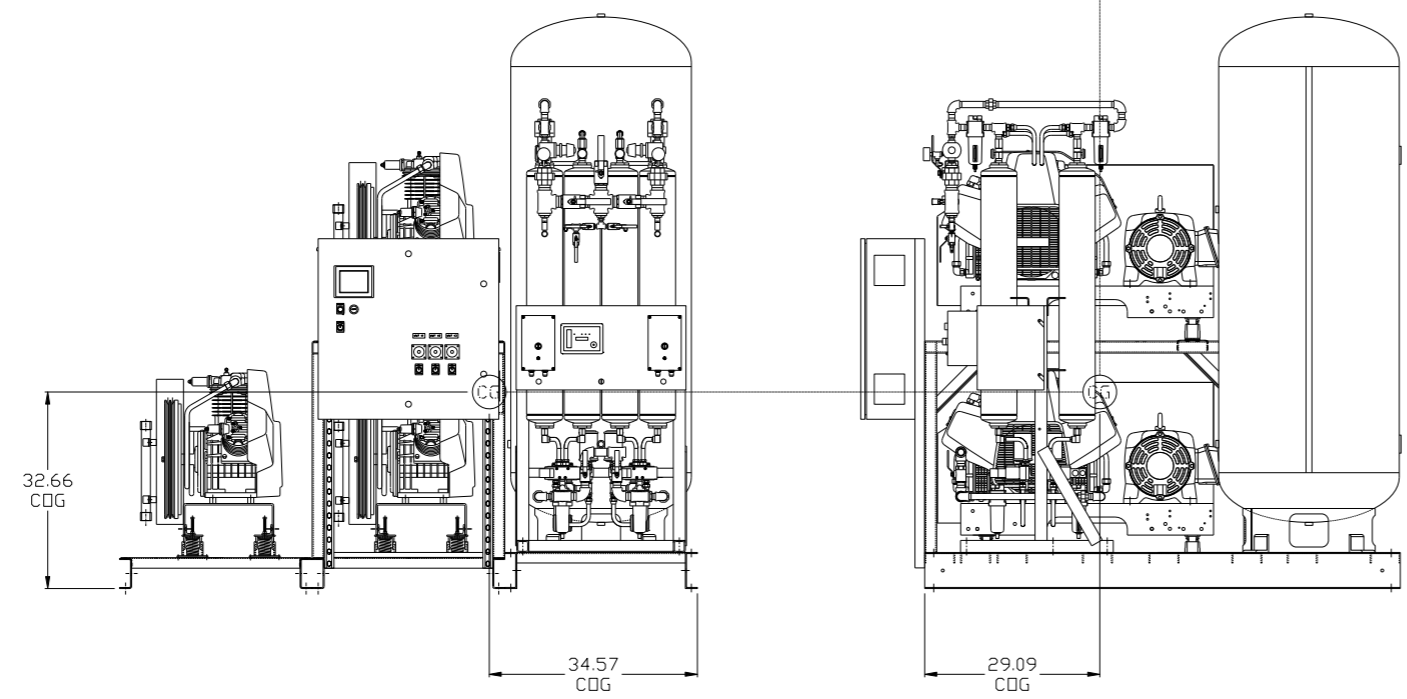
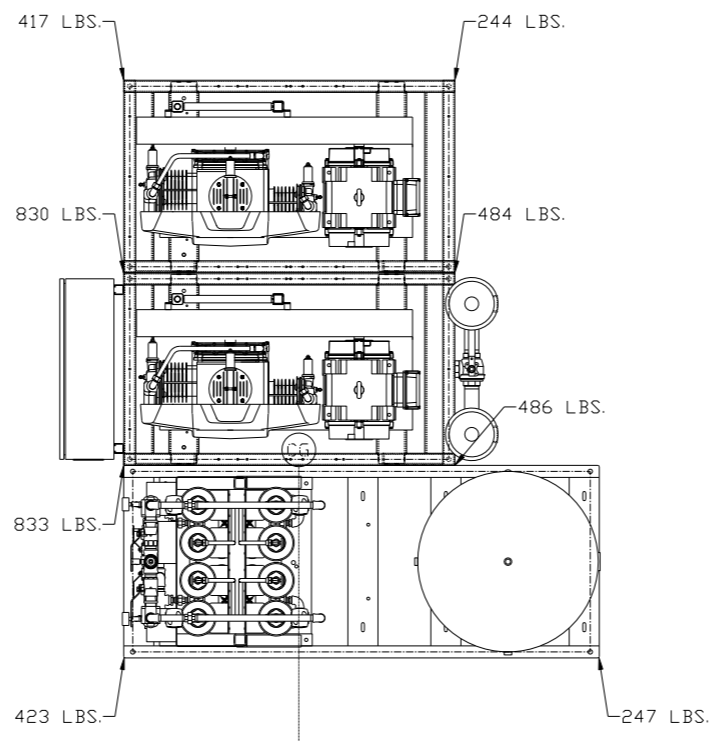
DRYER/TANK SKID:  
TOTAL WEIGHT: 1664 LBS  
C.O.G. DIMENSIONS  
X (FRONT): 16"  
Y (RIGHT): 38.69"  
Z (HEIGHT): 35.48"

(CG) denotes center of gravity

SYMBOL LEGEND		= ADDITIONAL CONTROL REQ'D		Drawings to conform to the current revision of the following ANSI standards:	
⊖	MINUS DRAFT	⊕	PLUS DRAFT	⊖	ANSI Y14.3 Multi and sectional view dgs.
⊕	PLUS DRAFT	⊖	MINUS DRAFT	⊖	ANSI Y14.5M Dimensioning and tolerancing
TOLERANCES NOT SPECIFIED		AUTOCAD REL2008 LT		DO NOT SCALE DRAWING FOR DIMENSIONS	
.XX ±		INCH		Sheet 3 of 4	
.XXX ±				SCALE 1:16	
<<DEG>> ±					
CONFIDENTIAL DISCLOSURE					
This drawing is the property of POWEREX, INC. of the SCOTT FELTZER COMPANY and subject to return on demand. Its contents are confidential and must not be copied or submitted to outside parties for use or examination.					
DRAWN BY		CHECKED BY		APPROVED BY	
AEK		GES		DMS RJR	
9/23/11		9/23/11		9/23/11 9/23/11	
MATERIAL		N/A		POWEREX	
PART NAME		TRIPLEX DILLESS RECIP.		150 PRODUCTION DRIVE, HARRISON, OHIO 45030	
15HP, 240 GAL. BASEMOUNT		DWG NO		MPT1508	
		SIZE		D	

8 7 6 5 4 3 2 1

REV	ZONE	REVISION	DATE	ECN	NAME	CHKD
N-1	ALL	ADDED PBM1 SHEETS	9/23/11	22609	AEK	GES
P-1	2 ALL	ADDED/UPDATED FLEX LINES ON FLOW	12/12/13	PXEC0030	AEK	GES
Q-1	ALL	UPDATED DRYER OUTLET ORIENTATION	4/1/15	PXEC0080	AEK	GES



SYSTEM:  
 TOTAL WEIGHT: 3963 LBS  
 C.O.G. DIMENSIONS  
 X (FRONT): -34.57"  
 Y (RIGHT): 29.09"  
 Z (HEIGHT): 32.66"

CG denotes center of gravity

<b>SYMBOL LEGEND</b> ⊖ = MINUS DRAFT    ⊕ = PLUS DRAFT ⊕ = ADDITIONAL CONTROL REQ'D HRC = BRINELL HARDNESS		Drawings to conform to the current revision of the following ANSI standards: Y14.3 Multi and sectional view dgs. Y14.5M Dimensioning and tolerancing	
TOLERANCES NOT SPECIFIED .XX ± .XXX ± <DEG> ±		AUTOCAD REL2008 LT <b>INCH</b> DO NOT SCALE DRAWING FOR DIMENSIONS Sheet 4 of 4    SCALE 1:16	
<b>CONFIDENTIAL DISCLOSURE</b> This drawing is the property of POWEREX, INC. of the SCOTT FEITZER COMPANY and subject to return on demand. Its contents are confidential and must not be copied or submitted to outside parties for use or examination.		DRAWN BY: AEK CHECKED BY: GES APPROVED BY: DMS, RJR 9/23/11    9/23/11    9/23/11    9/23/11	
MATERIAL: N/A PART NAME: TRIPLEX DILLESS RECIP.		 150 PRODUCTION DRIVE, HARRISON, OHIO 45030 Ph: 888-769-7979 FAX: (513) 367-3125	
15HP, 240 GAL. BASEMOUNT		DWG NO: MPT1508    SIZE: D	

8 7 6 5 4 3 2 1