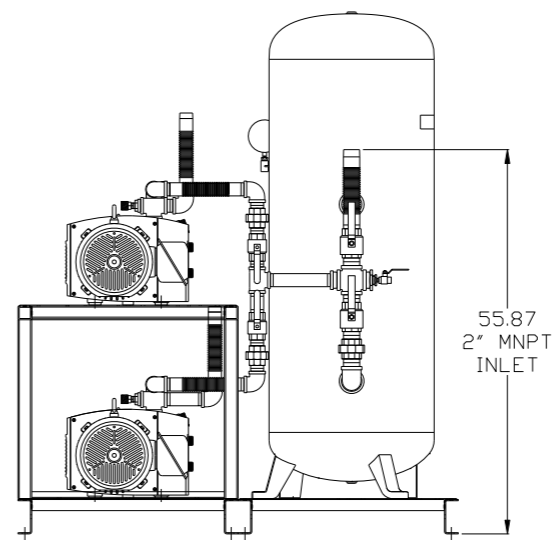
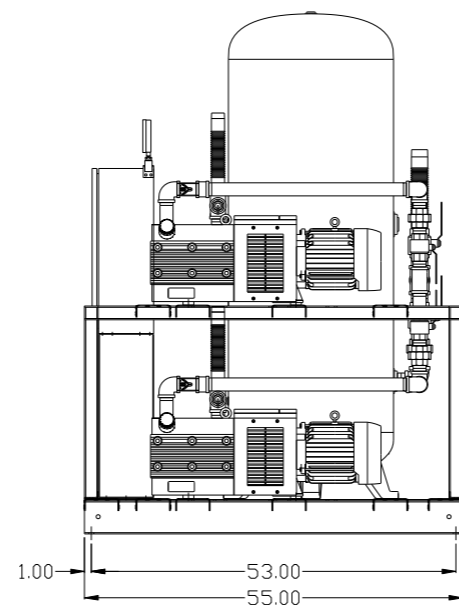
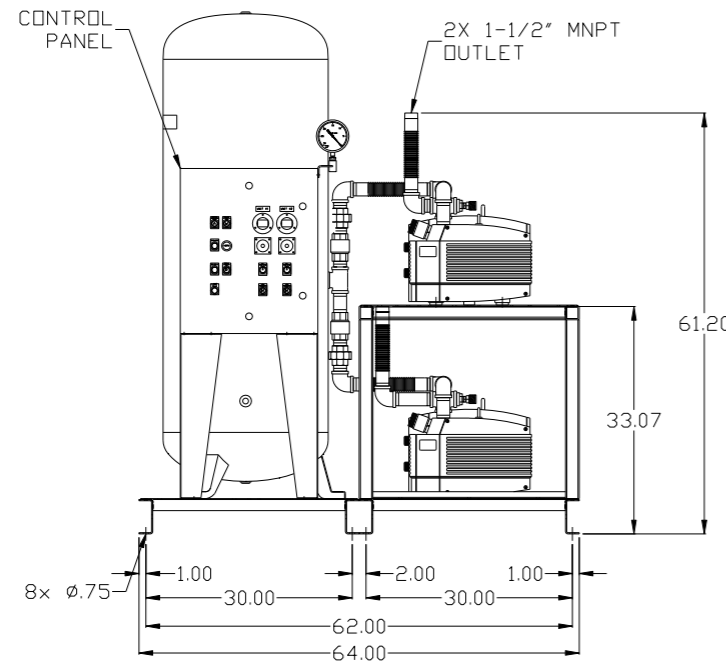
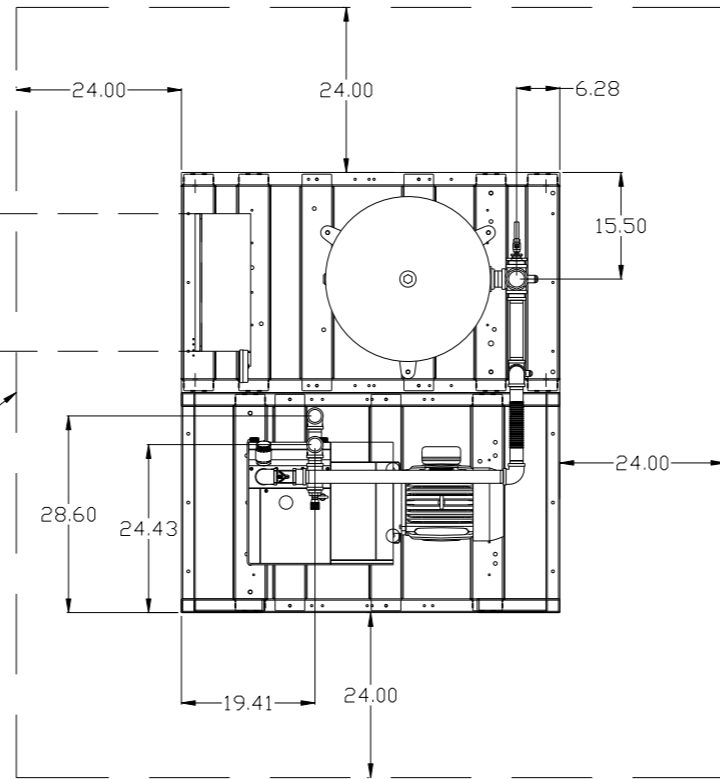


REV	ZONE	REVISION	DATE	ECN	NAME	CHKD
B-1	ALL	RELEASE FOR PRODUCTION	3/4/08	21906	AEK	GES
C-1	1 ALL	UPDATED LAYOUT TO CURRENT STANDARD	3/19/08	21907	AEK	GES
C-2	2 B6	REMOVED SIGHT GAUGE FROM FLOW SCHEMATIC	4/22/08	21907	AEK	GES
C-3	1 ALL	REDREW BUILD TO REFLECT CURRENT PRODUCTION	10/24/08	21907	AEK	DMS
D-1	1 ALL	REMOVED VACUUM SWITCHES FROM CONTROL PANEL	11/19/09	22127	AEK	GES
E-1	ALL 2 ALL 2 B5	MADE HIGH TEMP STANDARD IN BASIC CONTROLS ADDED SOURCE VALVE INFORMATION ADDED SIGHT GAUGE	6/3/14	PXEC0067	AEK	GES

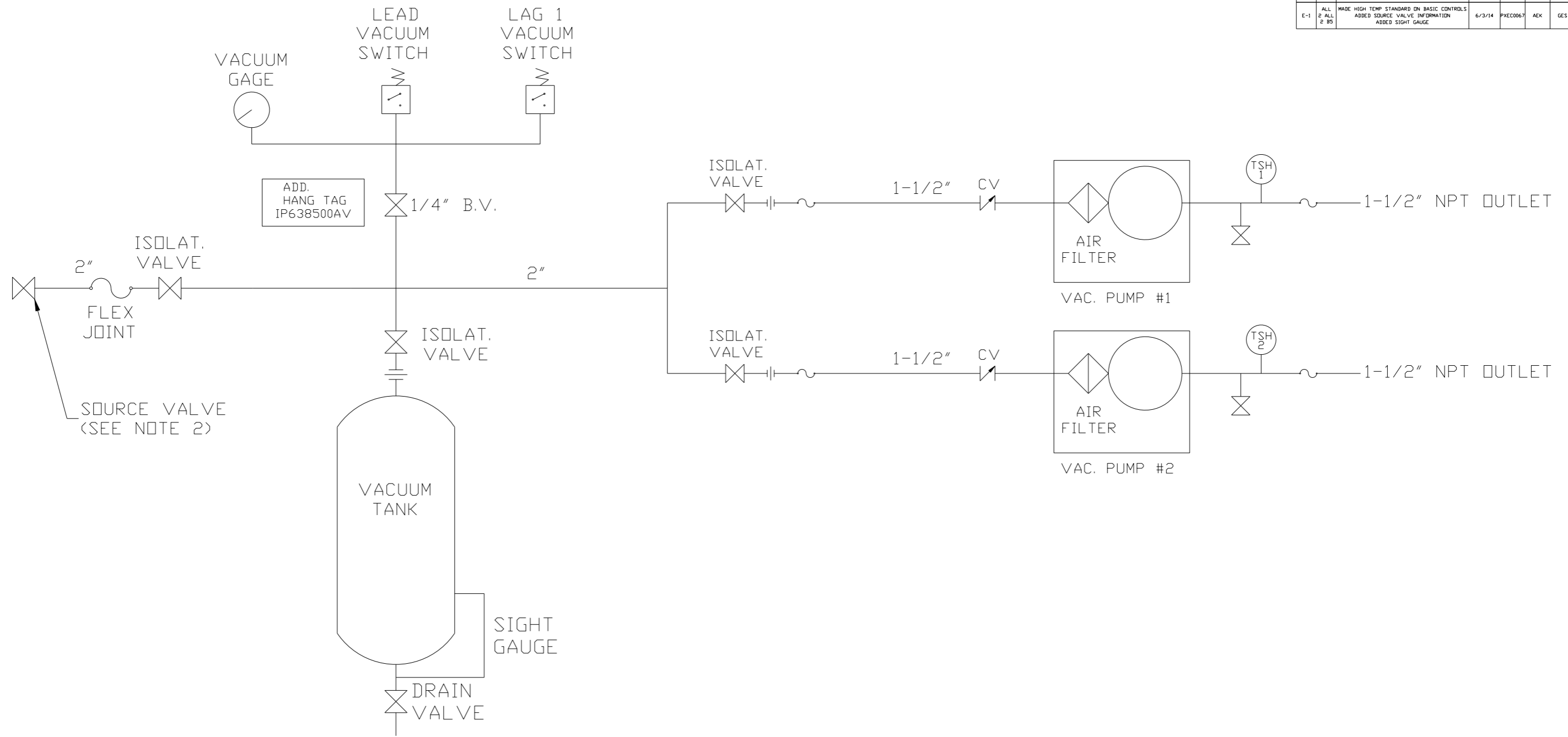
MINIMUM RECOMMENDED ELECTRICAL PANEL CLEARANCE PER OSHA/NEC REQUIREMENTS

MINIMUM RECOMMENDED MAINTENANCE CLEARANCE



SYMBOL LEGEND ⊖ = MINUS DRAFT ⊕ = PLUS DRAFT Ⓢ = ADDITIONAL CONTROL REQ'D Ⓜ = BRINELL HARDNESS		Drawings to conform to the current revision of the following ANSI standards: Y14.3 Multi and sectional view dgs. Y14.5M Dimensioning and tolerancing	
TOLERANCES NOT SPECIFIED .XX ± .XXX ± \angle (DEG) ±		DO NOT SCALE DRAWING FOR DIMENSIONS Sheet 1 of 2 SCALE 1:14	
CONFIDENTIAL DISCLOSURE This drawing is the property of POWEREX, INC. of the SCOTT FELTZER COMPANY and subject to return on demand. Its contents are confidential and must not be copied or submitted to outside parties for use or examination.			
DRAWN BY AEK		CHECKED BY GES	
APPROVED BY DMS		APPROVED BY RJR	
DATE 3/4/08		DATE 3/4/08	
MATERIAL N/A		POWEREX 150 PRODUCTION DRIVE, HARRISON, OHIO 45030 Ph: 888-769-7979 FAX: (513) 367-3125	
PART NAME 7.5HP OILLESS VAC 120GAL DUPLEX		DWG NO VOPD0754	
		SIZE D	

REV	ZONE	REVISION	DATE	ECN	NAME	CHKD
B-1	ALL	RELEASE TO PRODUCTION	3/4/08	21906	AEK	GES
C-1	1 ALL	UPDATED LAYOUT TO CURRENT STANDARD	3/19/08	21907	AEK	GES
C-2	2 B6	REMOVED SIGHT GAUGE FROM FLOW SCHEMATIC	4/22/08	21907	AEK	GES
C-3	1 ALL	REDREW BUILD TO REFLECT CURRENT PRODUCTION	10/24/08	21907	AEK	DMS
D-1	1 ALL	REMOVED VACUUM SWITCHES FROM CONTROL PANEL	11/19/09	22127	AEK	GES
E-1	ALL 2 ALL 2 B5	MADE HIGH TEMP STANDARD IN BASIC CONTROLS ADDED SOURCE VALVE INFORMATION ADDED SIGHT GAUGE	6/3/14	PXEC0067	AEK	GES



LEGEND	
	TEMP. SWITCH
	VACUUM SWITCH
	AIR FILTER
	BALL VALVE
	CHECK VALVE
	FLEX LINE
	UNION

NOTES:
 1) TSH - TEMPERATURE SWITCH HIGH
 2) PER NFPA THE SYSTEM WILL REQUIRE A SOURCE VALVE (SUPPLIED BY OTHERS).

SYMBOL LEGEND			= ADDITIONAL CONTROL REQ'D		Drawings to conform to the current revision of the following ANSI standards: Y14.3 Multi and sectional view dgs. Y14.5M Dimensioning and tolerancing
	= MINUS DRAFT		= BRINELL HARDNESS		
TOLERANCES NOT SPECIFIED		AUTOCAD REL2008 LT	DO NOT SCALE DRAWING FOR DIMENSIONS		
.XX ±		INCH	Sheet 2 of 2	SCALE 1:14	
CONFIDENTIAL DISCLOSURE This drawing is the property of POWEREX, INC. of the SCOTT FETZER COMPANY and subject to return on demand. Its contents are confidential and must not be copied or submitted to outside parties for use or examination.		DRAWN BY AEK	CHECKED BY GES	APPROVED BY ENGINEERING DMS	MFG/MKTG RJR
MATERIAL N/A		3/4/08	3/4/08	3/4/08	3/4/08
PART NAME OILLESS VAC DUPLEX FLOW SCHEMATIC		 150 PRODUCTION DRIVE, HARRISON, OHIO 45030 Ph: 888-769-7979 FAX: (513) 367-3125		DWG NO VOPD0754	SIZE D