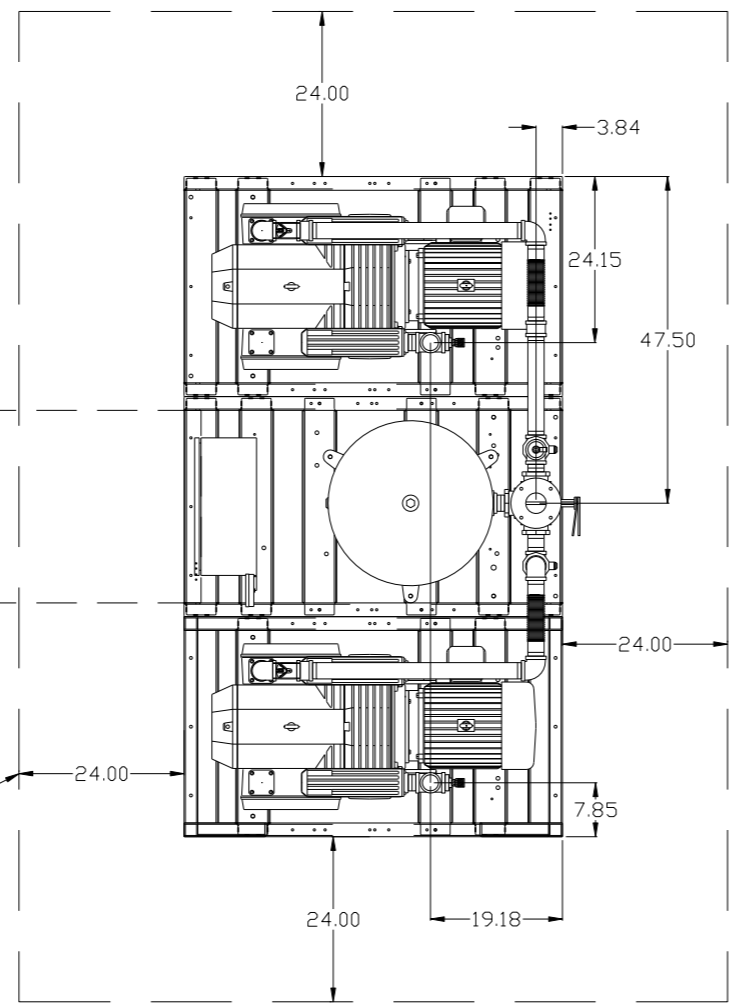


8 7 6 5 4 3 2 1

REV	ZONE	REVISION	DATE	ECN	NAME	CHKD
B-1	ALL	RELEASE TO PRODUCTION	3/6/08	21906	AEK	GES
C-1	1 ALL	UPDATED LAYOUT TO CURRENT STANDARD	3/20/08	21907	AEK	GES
C-2	2 B6	REMOVED SIGHT GAUGE FROM FLOW SCHEMATIC	4/22/08	21907	AEK	GES
C-3	1 ALL	UPDATED LAYOUT TO CURRENT BUILD	10/29/08	21907	AEK	GES
D-1	1 ALL	REMOVED VACUUM SWITCHES FROM CONTROL PANEL	11/19/09	22127	AEK	GES
E-1	ALL	MADE HIGH TEMP STANDARD IN BASIC CONTROLS CHANGED 3" BALL VALVE/UNION TO BUTTERFLY VALVE	6/9/14	PXEC0067	AEK	GES

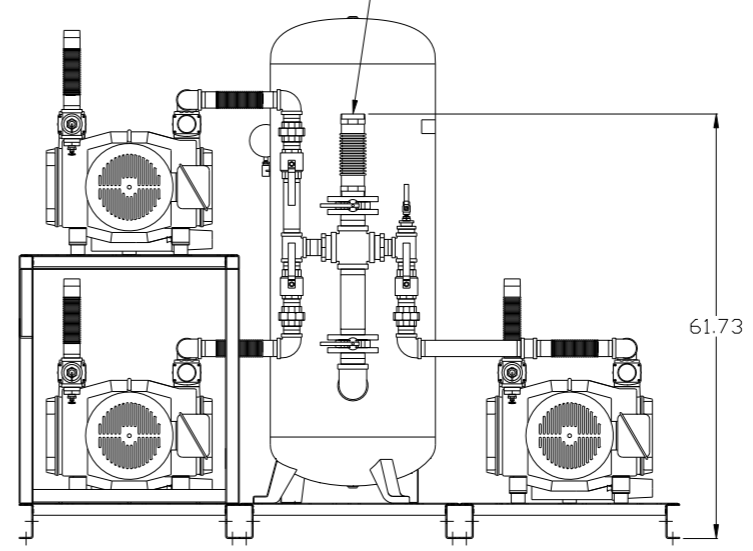
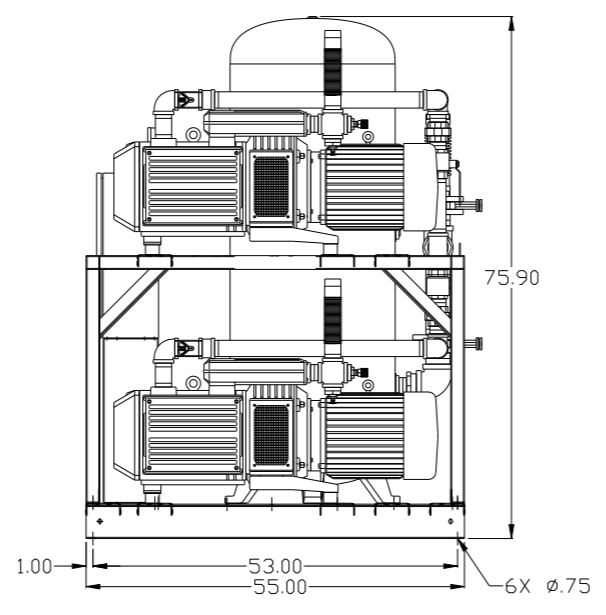
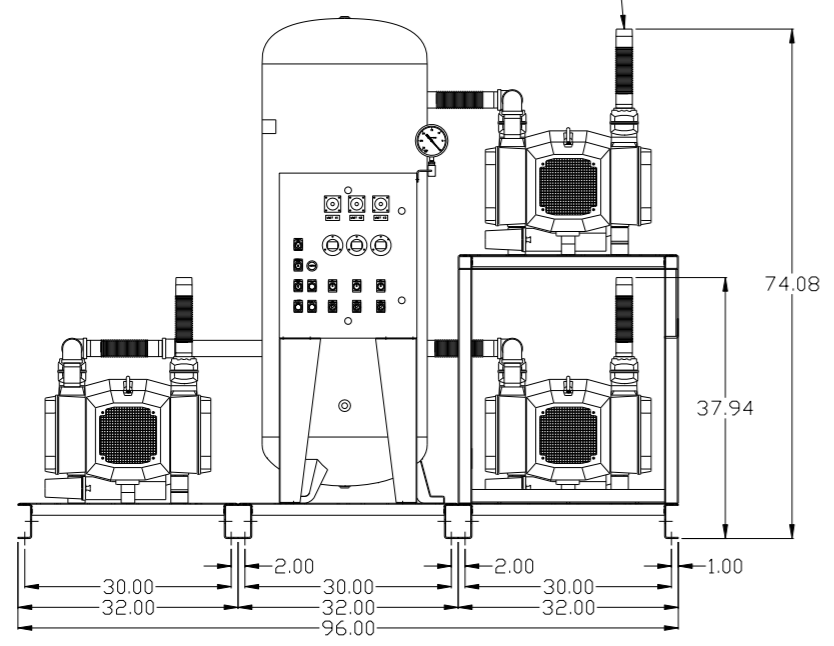
MINIMUM RECOMMENDED  
ELECTRICAL CLEARANCE  
PER OSHA/NEC  
REQUIREMENTS

MINIMUM RECOMMENDED  
MAINTENANCE CLEARANCE



3X 2" MNPT  
OUTLET

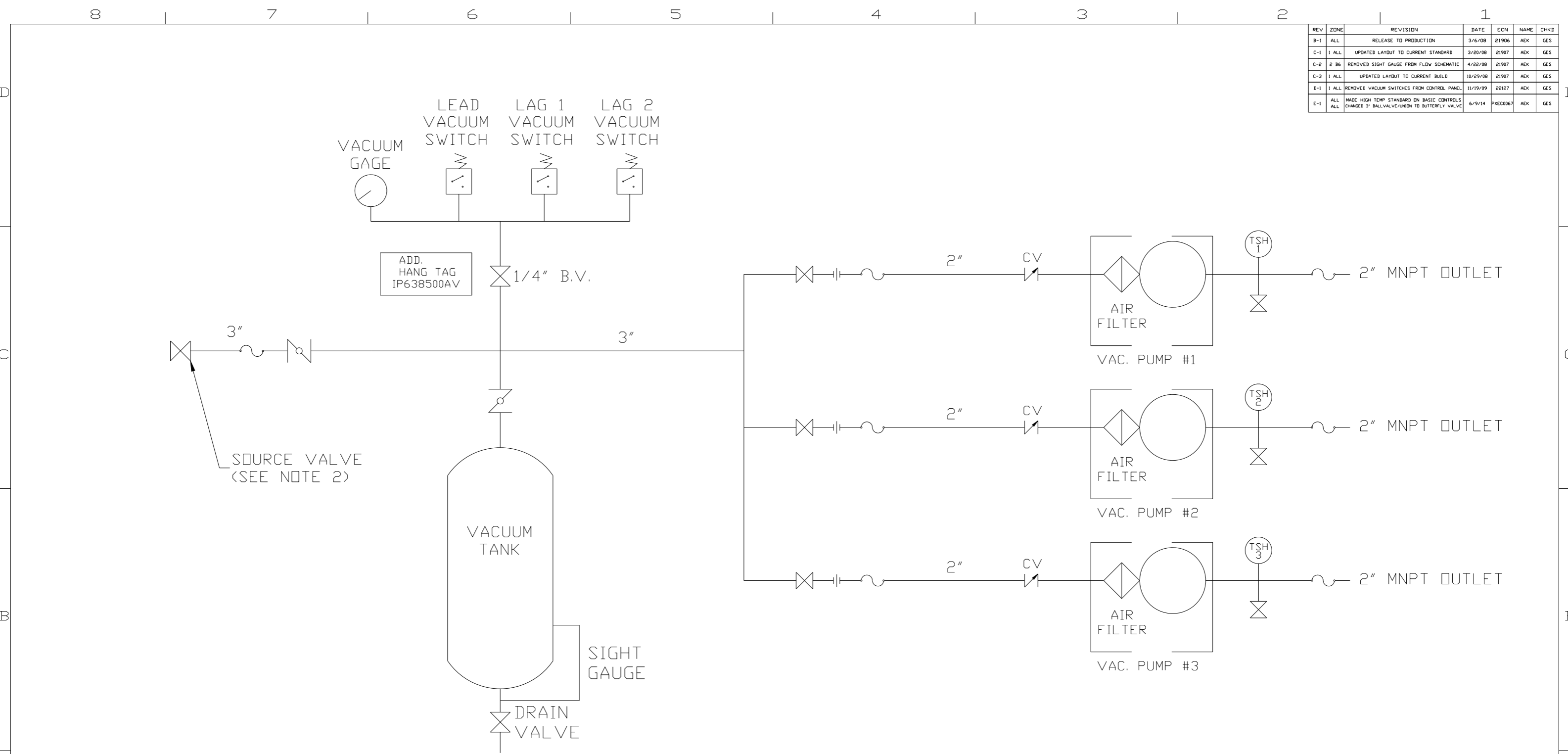
3" MNPT  
INLET



<b>SYMBOL LEGEND</b> ⊖ = MINUS DRAFT ⊕ = PLUS DRAFT ⊕ = BRINELL HARDNESS		= ADDITIONAL CONTROL REQ'D = BRINELL HARDNESS		Drawings to conform to the current revision of the following ANSI standards: Y14.3 Multi and sectional view dsgs. Y14.5M Dimensioning and tolerancing
TOLERANCES NOT SPECIFIED .XX ± .XXX ± <math>\angle</math> DEG ±		AUTOCAD REL2008LT INCH		DO NOT SCALE DRAWING FOR DIMENSIONS Sheet 1 of 2 SCALE 1:14
CONFIDENTIAL DISCLOSURE This drawing is the property of the CAMPBELL GROUP of the SCOTT FETZER COMPANY and subject to return on demand. Its contents are confidential and must not be copied or submitted to outside parties for use or examination.		DRAWN BY AEK	CHECKED BY GES	APPROVED BY ENGINEERING MFG/MKTG DMS RJR
MATERIAL N/A		DATE 3/6/08	DATE 3/6/08	DATE 3/6/08
PART NAME 10HP DILLESS VAC TRIPLEX 120 GAL		 150 PRODUCTION DRIVE, HARRISON, OHIO 45030 Ph 888-769-7979 FAX (513) 367-3125		DWG NO VOPT1004
				SIZE D

8 7 6 5 4 3 2 1

REV	ZONE	REVISION	DATE	ECN	NAME	CHKD
B-1	ALL	RELEASE TO PRODUCTION	3/6/08	21906	AEK	GES
C-1	1 ALL	UPDATED LAYOUT TO CURRENT STANDARD	3/20/08	21907	AEK	GES
C-2	2 B6	REMOVED SIGHT GAUGE FROM FLOW SCHEMATIC	4/22/08	21907	AEK	GES
C-3	1 ALL	UPDATED LAYOUT TO CURRENT BUILD	10/29/08	21907	AEK	GES
D-1	1 ALL	REMOVED VACUUM SWITCHES FROM CONTROL PANEL	11/19/09	22127	AEK	GES
E-1	ALL	MADE HIGH TEMP STANDARD IN BASIC CONTROLS CHANGED 3" BALL VALVE/UNION TO BUTTERFLY VALVE	6/9/14	PXEC0067	AEK	GES



LEGEND	
	TEMP. SWITCH
	VACUUM SWITCH
	AIR FILTER
	CHECK VALVE
	BALL VALVE
	BUTTERFLY VALVE
	FLEX LINE
	UNION

NOTES:  
 1) TSH - TEMPERATURE SWITCH HIGH (OPTIONAL)  
 2) PER NFPA THE SYSTEM WILL REQUIRE A SOURCE VALVE (SUPPLIED BY OTHERS).

SYMBOL LEGEND			ADDITIONAL CONTROL REQ'D	Drawings to conform to the current revision of the following ANSI standards: Y14.3 Multi and sectional view dsgs. Y14.5M Dimensioning and tolerancing
	MINUS DRAFT		BRINELL HARDNESS	
TOLERANCES NOT SPECIFIED		AUTOCAD REL2008LT	DO NOT SCALE DRAWING FOR DIMENSIONS	
.XX ±	.XXX ±	<< DEG > ±	INCH	SCALE 1:14
CONFIDENTIAL DISCLOSURE This drawing is the property of the CAMPBELL GROUP of the SCOTT FETZER COMPANY and subject to return on demand. Its contents are confidential and must not be copied or submitted to outside parties for use or examination.				
DRAWN BY	CHECKED BY	APPROVED BY	MFG/MRKTG	
AEK	GES	DMS	RJR	
3/6/08	3/6/08	3/6/08	3/6/08	
MATERIAL		N/A		
PART NAME		DILLESS VAC TRIPLEX SCHEMATIC		
DWG NO		VOPT1004		
SIZE		D		