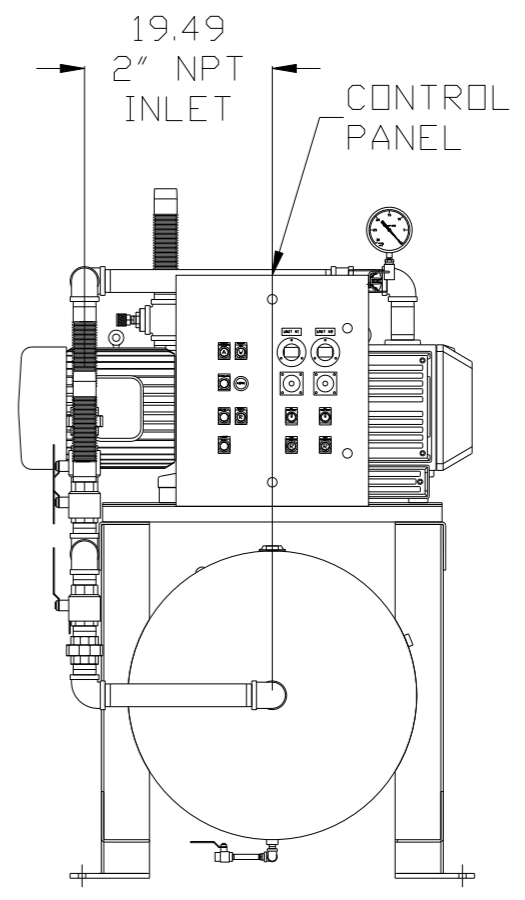
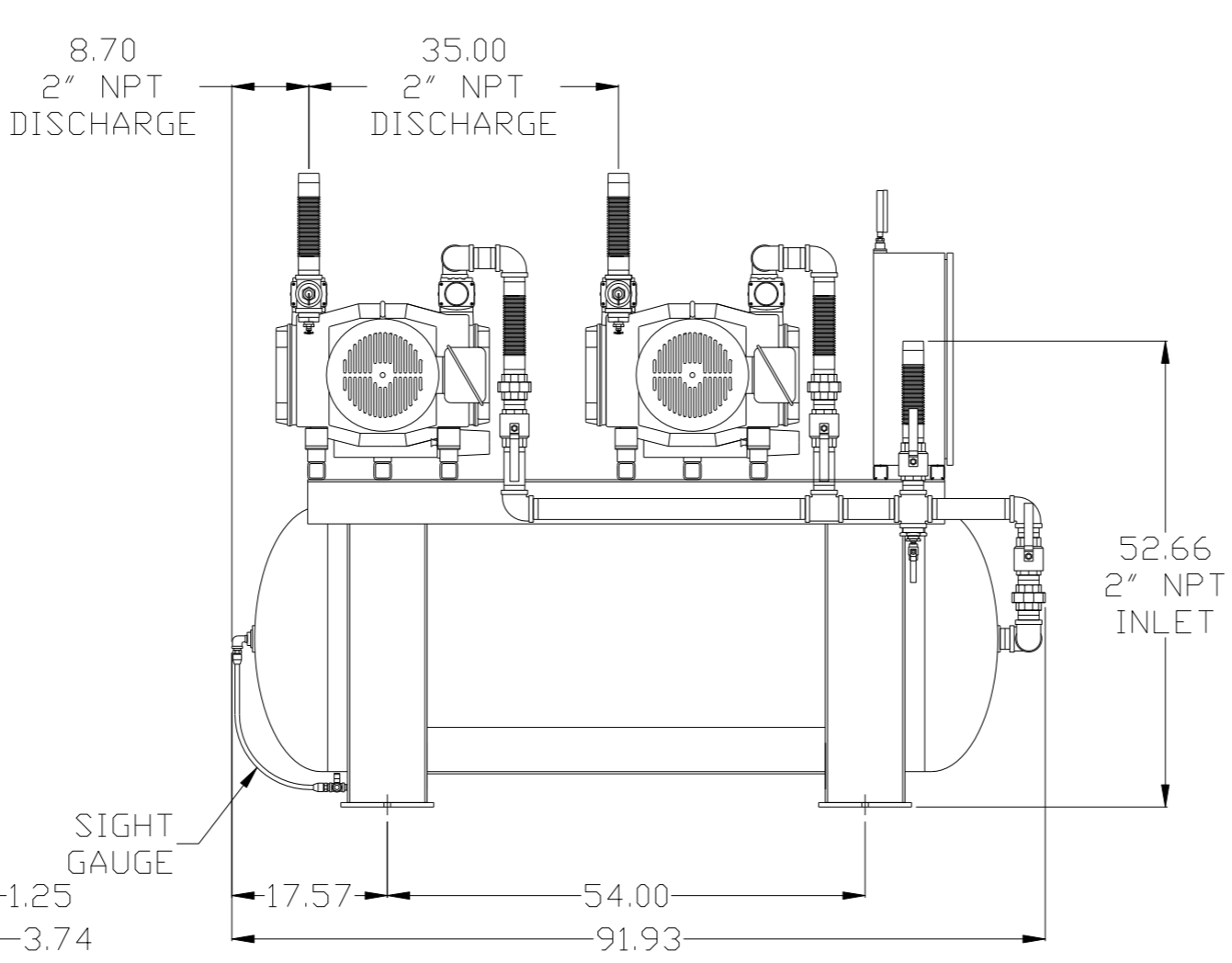
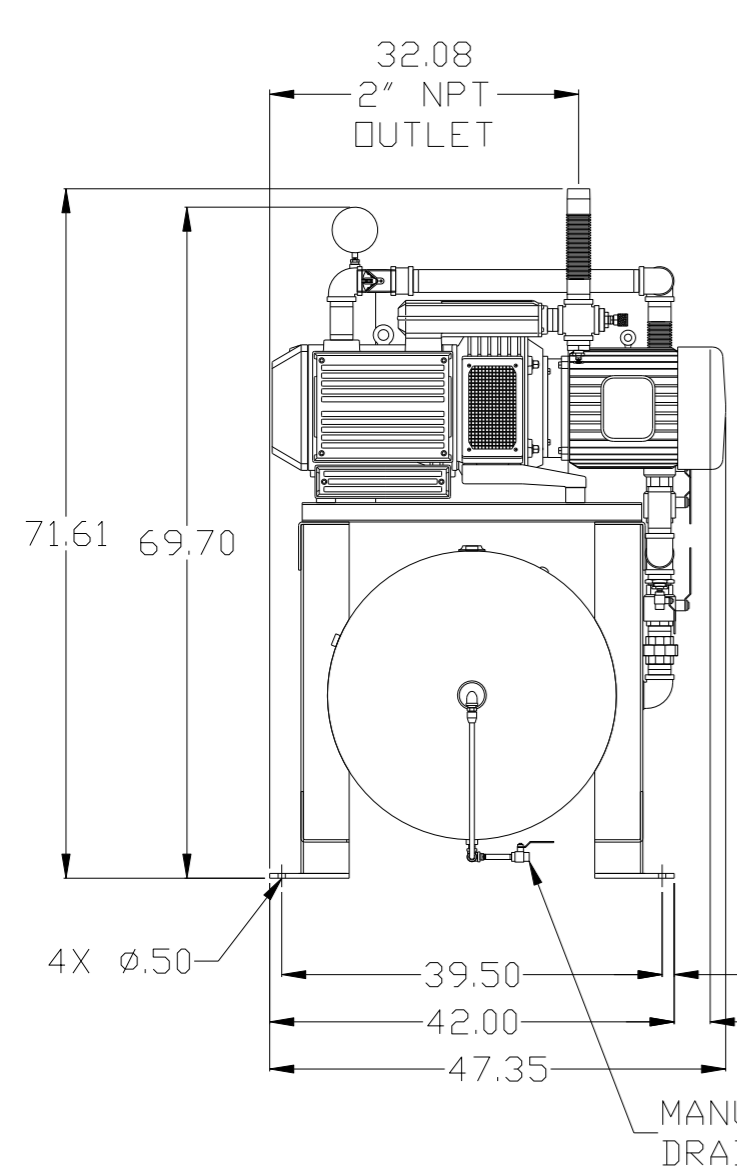
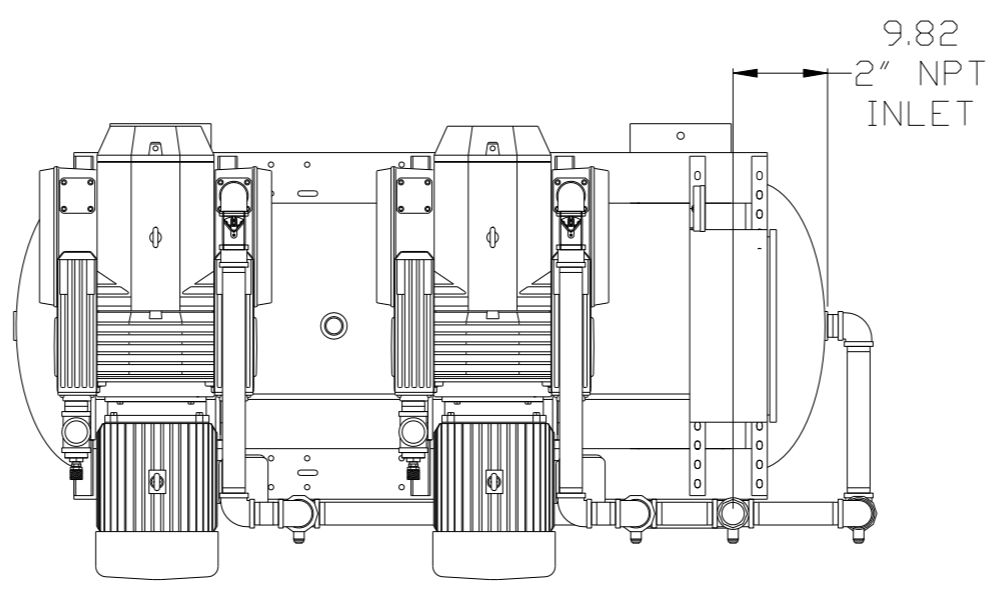


8 7 6 5 4 3 2 1

REV	ZONE	REVISION	DATE	ECN	NAME	CHKD
B-1	ALL	RELEASE TO PRODUCTION	2/1/08	21906	AEK	GES
C-1	1 ALL	MOVED PRESSURE GAUGE TO PANEL	3/25/08	21907	AEK	GES
C-2	ALL	REMOVED SIGHT GAUGE FROM LAYOUT AND FLOW	4/16/08	21907	AEK	GES
C-3	ALL	MOVED INLET PLUMBING TO MOTOR SIDE OF UNIT	10/30/08	21907	AEK	GES
D-1	1 ALL	RELOCATED INLET PLUMBING PER PRODUCTION	4/21/09	22127	AEK	GES
D-2	1 ALL	REMOVED VACUUM SWITCHES FROM CONTROL PANEL	11/19/09	22127	AEK	GES
E-1	2 CE	ADDED DRIP LEG	3/16/10	22348	AEK	DMS
F-1	ALL	ADDED P&ID SHEETS	12/27/11	22610	AEK	GES
G-1	1 ALL	UPDATED BUILD SHEET PLUMBING PER PRODUCTION	5/21/12	22723	AEK	DMS
H-1	ALL	ADDED SIGHT GAUGE	2/3/15	PXEC0093	AEK	GES
	2 ALL	ADDED SOURCE VALVE INFORMATION				
	ALL	MADE HIGH TEMP STANDARD IN BASIC CONTROLS				



NOTE: A MINIMUM OF 24" CLEARANCE IS RECOMMENDED AROUND THE ENTIRE UNIT.

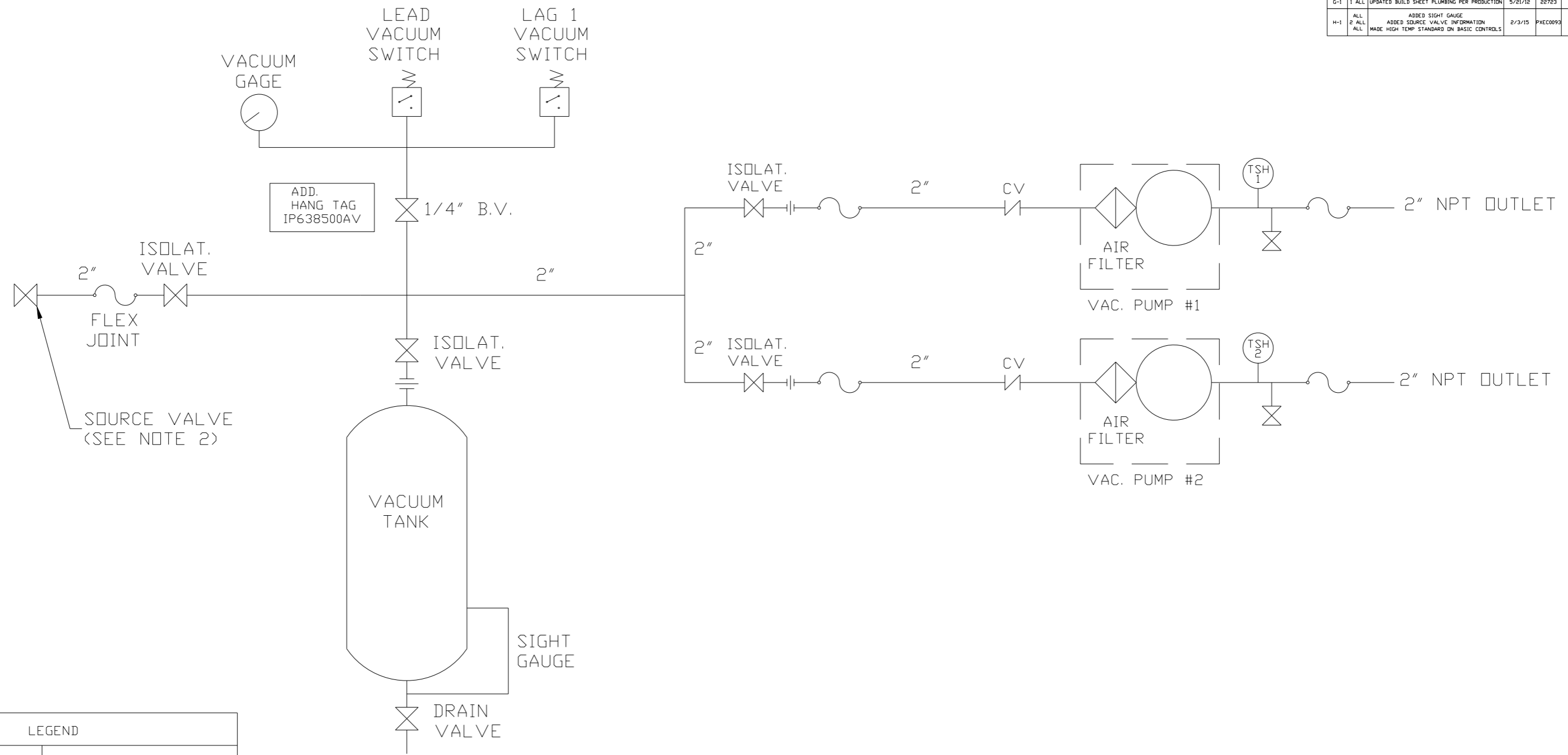
NOTE: SYSTEM DESIGNED IN COMPLIANCE WITH U.S. NFPA '99, LATEST EDITION.

<b>SYMBOL LEGEND</b> ⊖ = MINUS DRAFT ⊕ = PLUS DRAFT .XX ± .XXX ± <math>\angle</math>(DEG) ±		= ADDITIONAL CONTROL REQ'D = BRINELL HARDNESS		Drawings to conform to the current revision of the following ANSI standards: Y14.3 Multi and sectional view dgs. Y14.5M Dimensioning and tolerancing
TOLERANCES NOT SPECIFIED .XX ± .XXX ± <math>\angle</math>(DEG) ±		AUTOCAD REL2008 LT INCH	DO NOT SCALE DRAWING FOR DIMENSIONS Sheet 1 of 2 SCALE 1:10	
<b>CONFIDENTIAL DISCLOSURE</b> This drawing is the property of POWEREX, INC. of the SCOTT FETZER COMPANY and subject to return on demand. Its contents are confidential and must not be copied or submitted to outside parties for use or examination.				
DRAWN BY AEK	CHECKED BY GES	APPROVED BY DMS	MFG/MKTG RJR	DATE 2/1/08
MATERIAL N/A		 150 PRODUCTION DRIVE, HARRISON, OHIO 45030 Ph: 888-769-7979 Fax: (513) 367-3125		
PART NAME 10HP DILLESS VACUUM DUPLEX 240GAL		DWG NO VOTD1006BK	SIZE D	

8 7 6 5 4 3 2 1

VOTD1006BK.dwg

REV	ZONE	REVISION	DATE	ECN	NAME	CHKD
B-1	ALL	RELEASED TO PRODUCTION	2/1/08	21906	GES	DMS
C-1	1 ALL	MOVED PRESSURE GAUGE TO PANEL	3/25/08	21907	AEK	GES
C-2	ALL	REMOVED SIGHT GAUGE FROM LAYOUT AND FLOW	4/16/08	21907	AEK	GES
C-3	ALL	MOVED INLET PLUMBING TO MOTOR SIDE OF UNIT	10/30/08	21907	AEK	GES
D-1	1 ALL	RELOCATED INLET PLUMBING PER PRODUCTION	4/21/09	22127	AEK	GES
D-2	1 ALL	REMOVED VACUUM SWITCHES FROM CONTROL PANEL	11/19/09	22127	AEK	GES
E-1	2 CE	ADDED DRIP LEG	3/16/10	22348	AEK	DMS
F-1	ALL	ADDED P&ID SHEETS	12/27/11	22610	AEK	GES
G-1	1 ALL	UPDATED BUILD SHEET PLUMBING PER PRODUCTION	5/21/12	22723	AEK	DMS
H-1	ALL	ADDED SIGHT GAUGE	2/3/15	PXEC0093	AEK	GES
	2 ALL	ADDED SOURCE VALVE INFORMATION				
	ALL	MADE HIGH TEMP STANDARD IN BASIC CONTROLS				

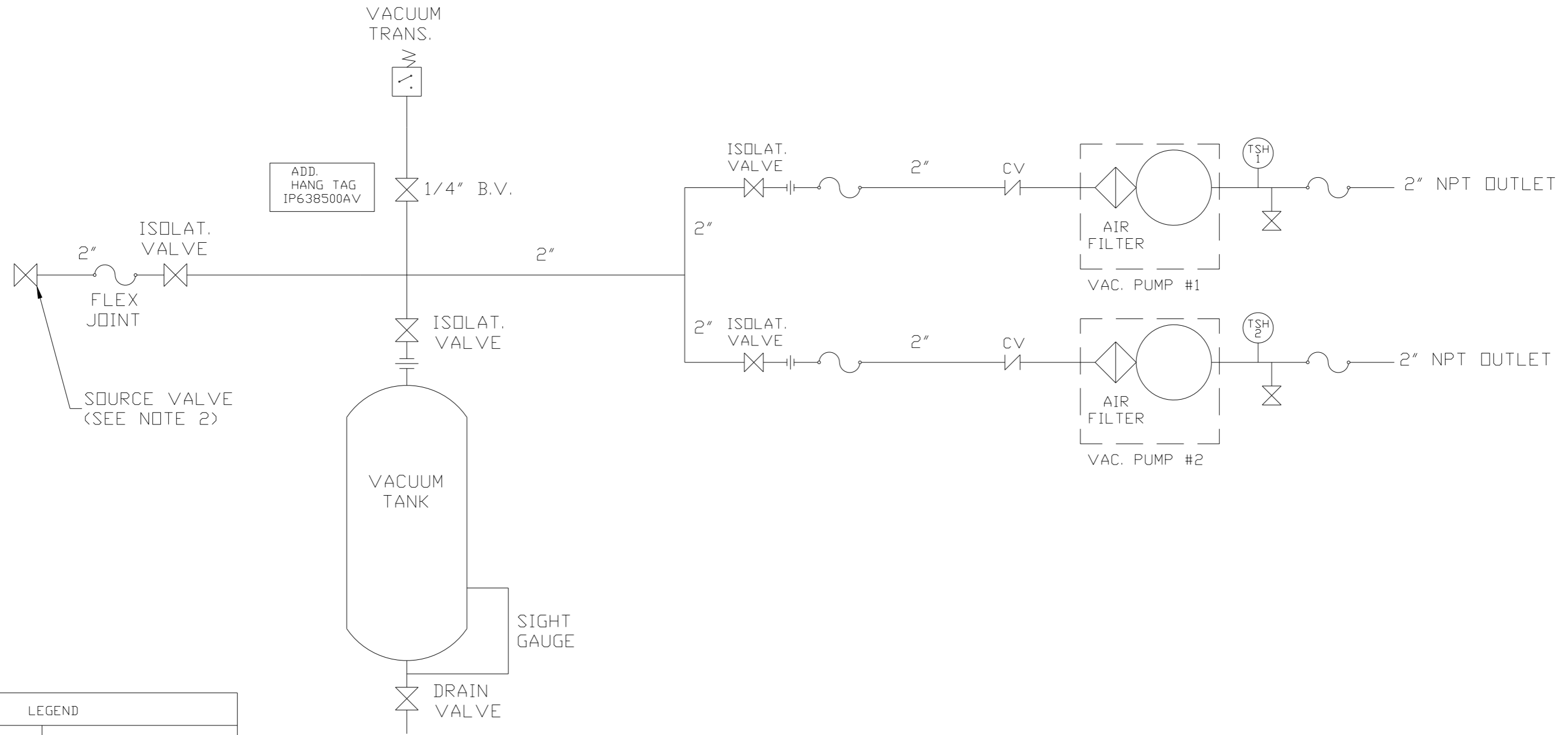


LEGEND	
	TEMP. SWITCH
	VACUUM SWITCH
	AIR FILTER
	BALL VALVE
	ADDITIONAL CONTROL REQ'D
	CHECK VALVE
	FLEX LINE
	UNION

NOTES:  
 1) TSH - TEMPERATURE SWITCH HIGH  
 2) PER NFPA THE SYSTEM WILL REQUIRE A SOURCE VALVE (SUPPLIED BY OTHERS).

SYMBOL LEGEND		Drawings to conform to the current revision of the following ANSI standards: Y14.3 Multi and sectional view dgs. Y14.5M Dimensioning and tolerancing	
⊖ = MINUS DRAFT	⊕ = PLUS DRAFT	⊕ = BRINELL HARDNESS	
TOLERANCES NOT SPECIFIED		DO NOT SCALE DRAWING FOR DIMENSIONS	
.XX ±	.XXX ±	SCALE 1:10	
<<DEG> ±			
AUTOCAD REL2008 LT		Sheet 2 of 2	
CONFIDENTIAL DISCLOSURE This drawing is the property of POWEREX, INC. OF THE SCOTT FETZER COMPANY and subject to return on demand. Its contents are confidential and must not be copied or submitted to outside parties for use or examination.			
DRAWN BY	CHECKED BY	APPROVED BY	DATE
AEK	GES	DMS	RJR
2/1/08	2/1/08	2/1/08	2/1/08
MATERIAL N/A		PART NAME	
OILLESS VAC DUPLEX		FLOW SCHEMATIC	
DWG NO		SIZE	
VOTD1006BK		D	

REV	ZONE	REVISION	DATE	ECN	NAME	CHKD
F-1	ALL	ADDED P&MI SHEETS	12/27/11	22610	AEK	GES
G-1	1 ALL	UPDATED BUILD SHEET PLUMBING PER PRODUCTION	5/21/12	22723	AEK	DMS
H-1	ALL	ADDED SIGHT GAUGE	2/3/15	PXEC0093	AEK	GES
	2 ALL	ADDED SOURCE VALVE INFORMATION				
	ALL	MADE HIGH TEMP STANDARD DN BASIC CONTROLS				

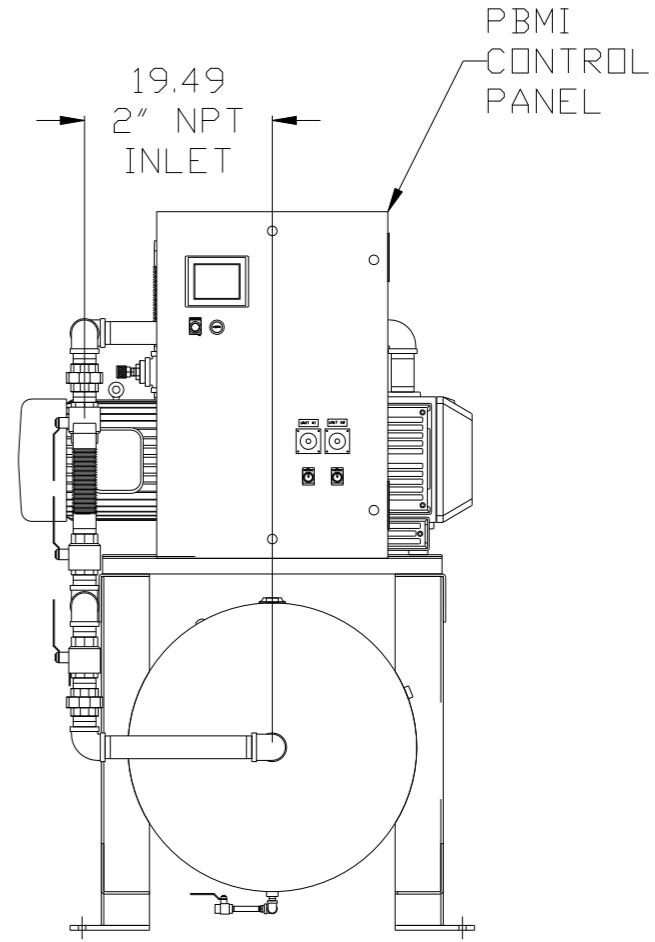
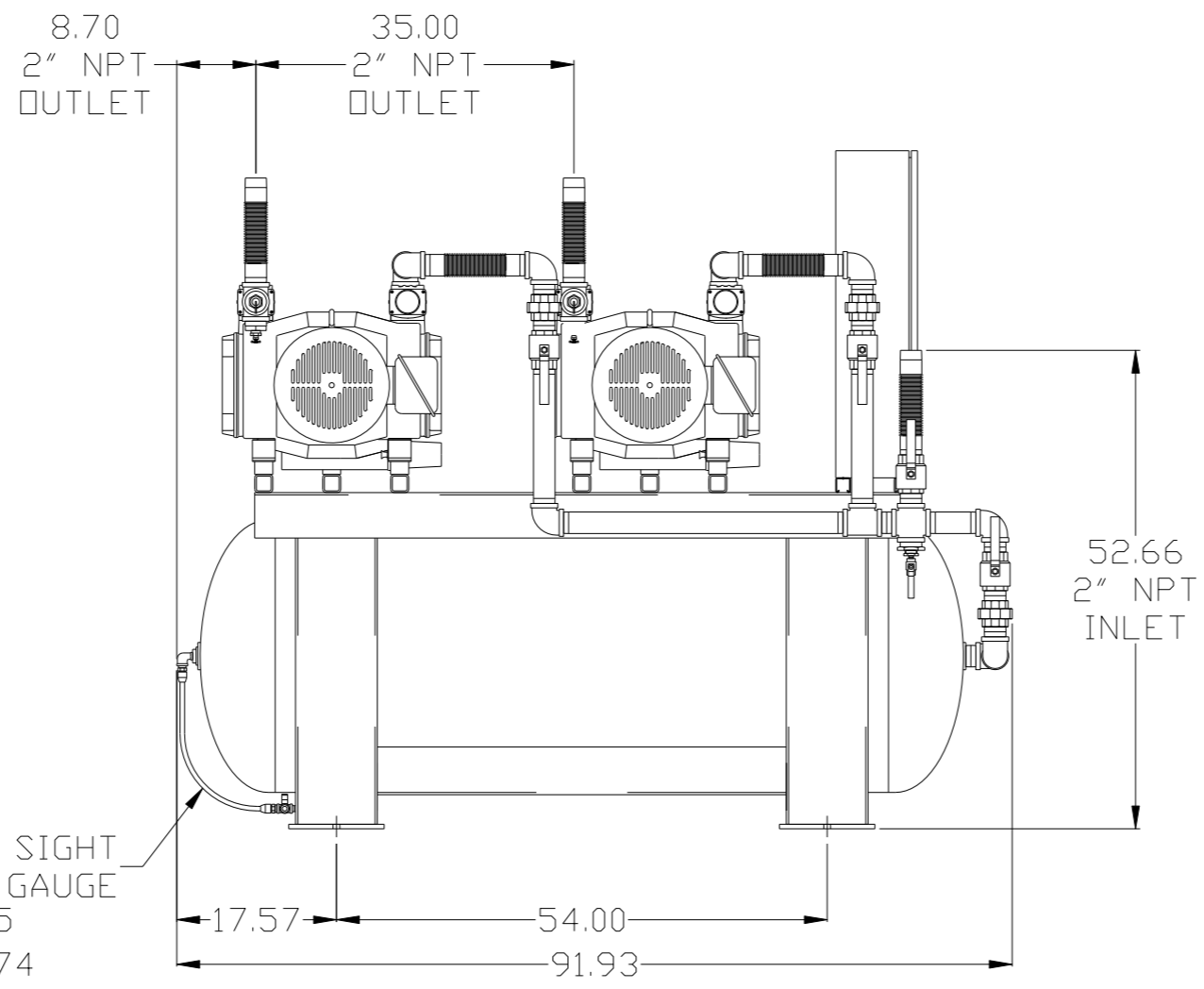
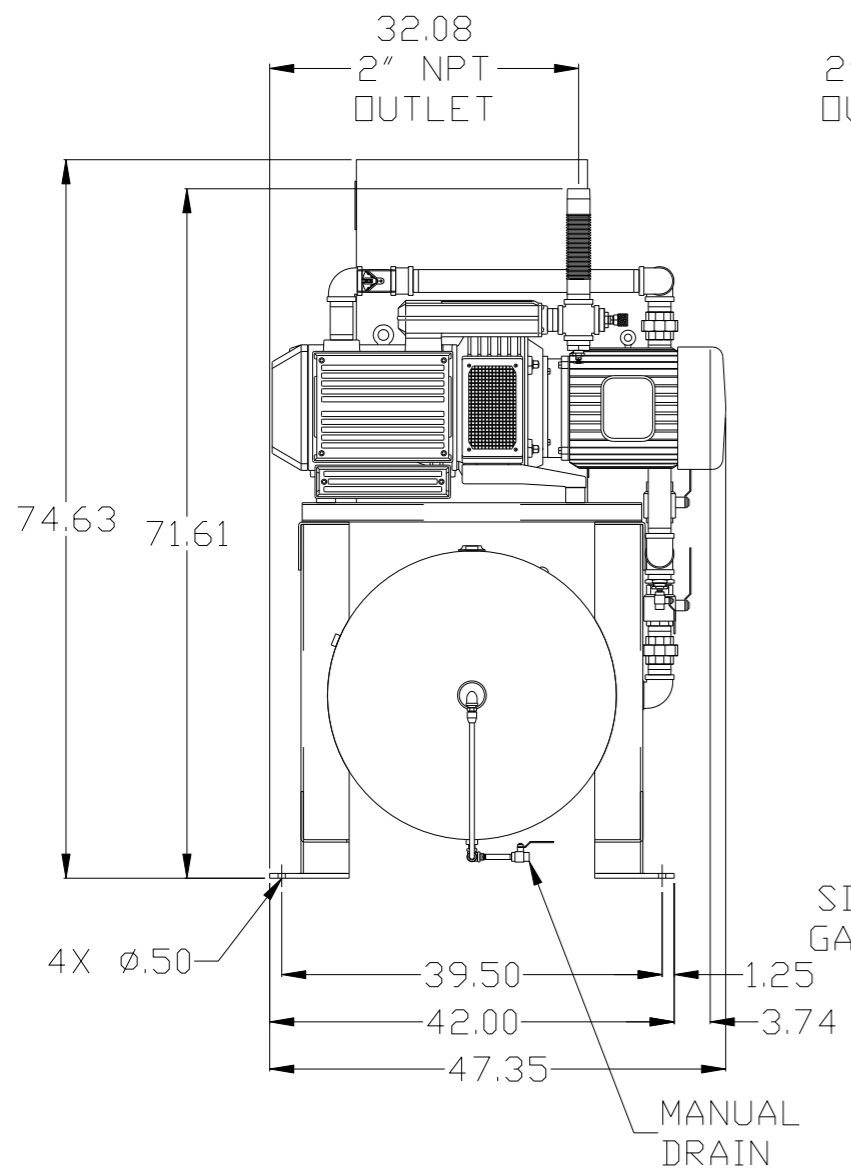
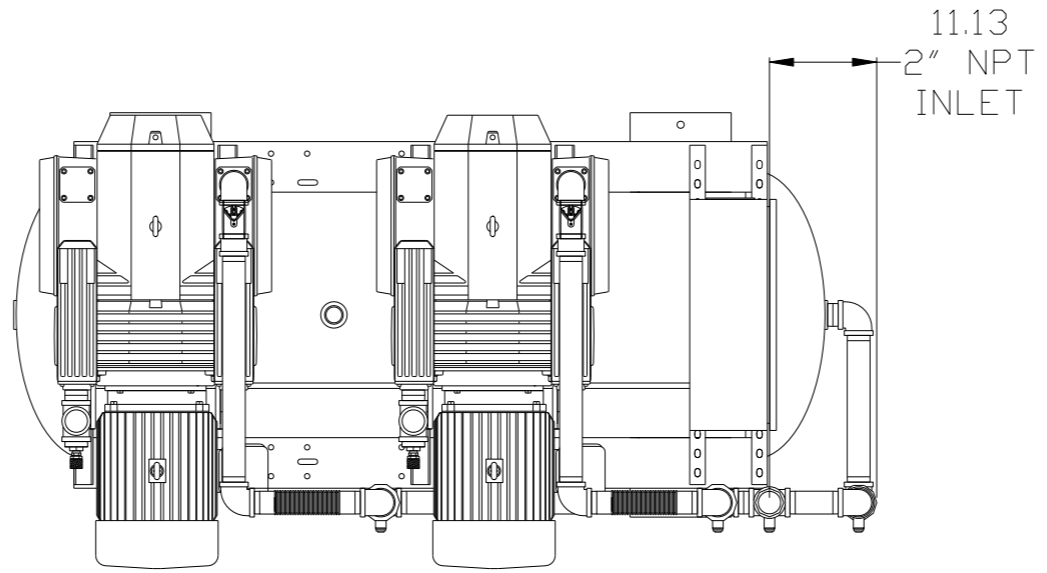


LEGEND	
	TEMP. SWITCH
	AIR FILTER
	BALL VALVE
	VACUUM SWITCH
	CHECK VALVE
	FLEX LINE
	UNION

NOTES:  
 1) TSH - TEMPERATURE SWITCH HIGH  
 2) PER NFPA THE SYSTEM WILL REQUIRE A SOURCE VALVE (SUPPLIED BY OTHERS).

SYMBOL LEGEND			ADDITIONAL CONTROL REQ'D	Drawings to conform to the current revision of the following ANSI standards: Y14.3 Multi and sectional view dsgs. Y14.5M Dimensioning and tolerancing
	MINUS DRAFT		BRINELL HARDNESS	
TOLERANCES NOT SPECIFIED		AUTOCAD REL2008 LT	DO NOT SCALE DRAWING FOR DIMENSIONS	
.XX ±		INCH	Sheet 2 of 2	SCALE 1:10
CONFIDENTIAL DISCLOSURE This drawing is the property of POWEREX, INC. of the SCOTT FETZER COMPANY and subject to return on demand. Its contents are confidential and must not be copied or submitted to outside parties for use or examination.		DRAWN BY AEK	CHECKED BY GES	APPROVED BY ENGINEERING MFG/MKTG AEK RJR
MATERIAL N/A		12/27/11	12/27/11	12/27/11
PART NAME DILLESS VAC DUPLEX FLOW SCHEMATIC		 150 PRODUCTION DRIVE, HARRISON, OHIO 45030 Ph: 888-769-7979 FAX: (513) 367-3125		SIZE D
		DWG NO VOTD1006BK		VOTD1006BK.dwg

REV	ZONE	REVISION	DATE	ECN	NAME	CHKD
F-1	ALL	ADDED PBMI SHEETS	12/27/11	22610	AEK	GES
G-1	1 ALL	UPDATED BUILD SHEET PLUMBING PER PRODUCTION	5/21/12	22723	AEK	DMS
H-1	ALL	ADDED SIGHT GAUGE	2/3/15	PXEC0093	AEK	GES
	2 ALL	ADDED SOURCE VALVE INFORMATION				
	ALL	MADE HIGH TEMP STANDARD DN BASIC CONTROLS				



NOTE: A MINIMUM OF 24" CLEARANCE IS RECOMMENDED AROUND THE ENTIRE UNIT.

NOTE: SYSTEM DESIGNED IN COMPLIANCE WITH U.S. NFPA '99, LATEST EDITION.

<b>SYMBOL LEGEND</b> ⊖ = MINUS DRAFT ⊕ = PLUS DRAFT <math>\text{XX}</math> ± <math>\text{XXX}</math> ± <math>\text{Z<math>\langle</math>DEG}</math> ±		⊕ = ADDITIONAL CONTROL REQ'D HRC = BRINELL HARDNESS	Drawings to conform to the current revision of the following ANSI standards: Y14.3 Multi and sectional view dgs. Y14.5M Dimensioning and tolerancing
TOLERANCES NOT SPECIFIED .XX ± .XXX ± <math>\text{Z<math>\langle</math>DEG}</math> ±		AUTOCAD REL2008 LT INCH	DO NOT SCALE DRAWING FOR DIMENSIONS Sheet 1 of 2 SCALE 1:10
<b>CONFIDENTIAL DISCLOSURE</b> This drawing is the property of POWEREX, INC. OF THE SCOTT FETZER COMPANY and subject to return on demand. Its contents are confidential and must not be copied or submitted to outside parties for use or examination.			
DRAWN BY AEK		CHECKED BY GES	APPROVED BY ENGINEERING MFG/MKTG AEK RJR
MATERIAL N/A		DATE 12/27/11 12/27/11 12/27/11 12/27/11	
PART NAME 10HP OILLESS VACUUM DUPLEX 240GAL		SIZE VOTD1006BK D	