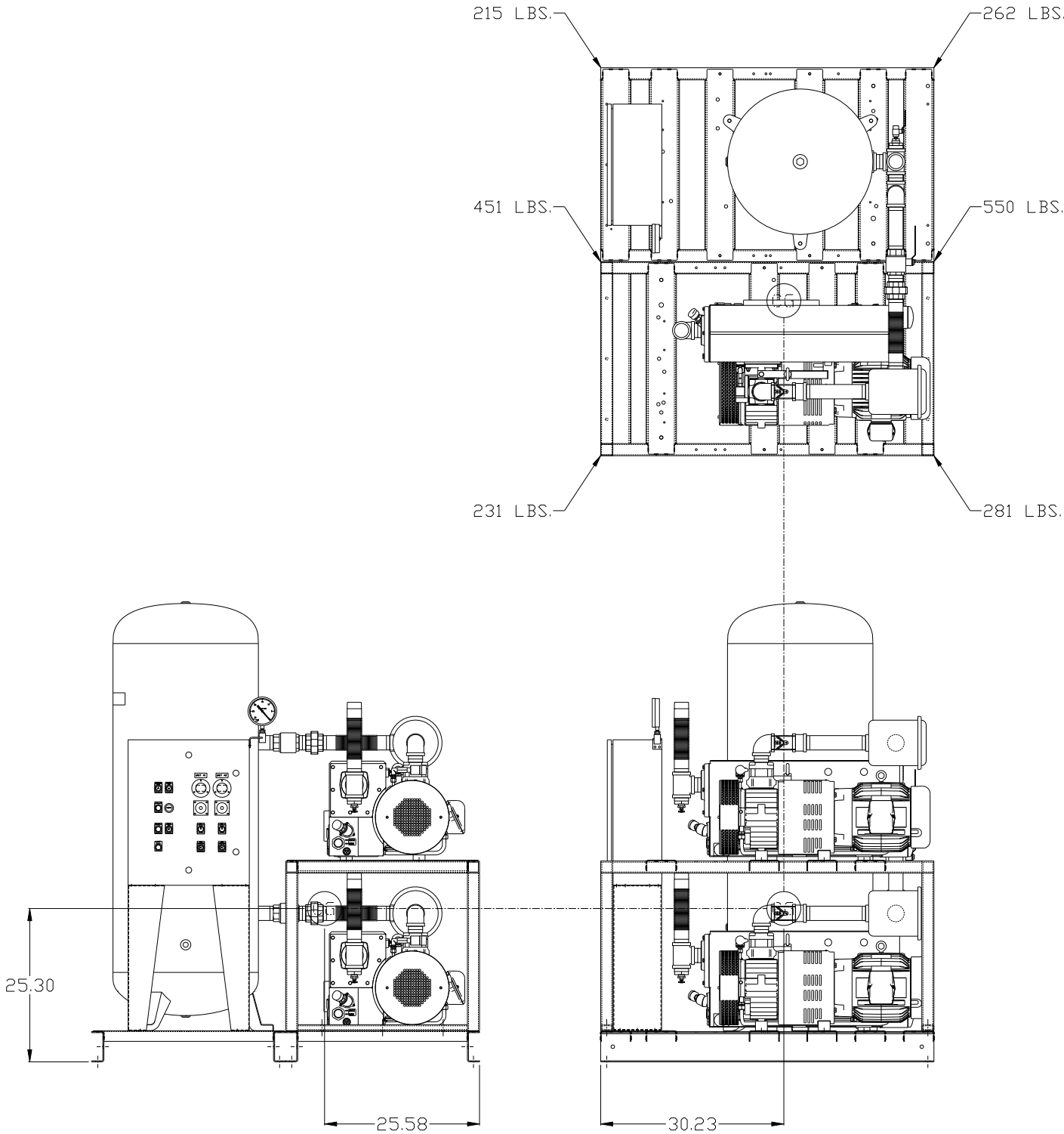


REV	ZONE	REVISION	DATE	ECN	NAME	CHKD
D-2	ALL	ADDED SHEET 3 & 4	12/16/09	22127	AEX	GES
E-1	2 ALL	ADDED DRIP LEG	5/10/10	22348	AEX	DMS
F-1	2 C3	CORRECTED HT SWITCH LOCATION	3/20/12	22772	AEX	GES
G-1	2 B5 2 ALL	ADDED SIGHT GAUGE ADDED SOURCE VALVE INFORMATION	12/7/12	22723	AEX	DMS
H-1	ALL ALL	MADE HIGH TEMP STANDARD ADDED PBM/HMI SHEETS	2/3/14	PXEC0067	AEX	GES
J-1	ALL	ADDED CONTROL PANEL BRACING	9/10/14	PXEC0080	AEX	GES
K-1	1,3,4 ALL	UPDATED TO NEW RA SERIES PUMP	12/8/16	PXEC0148	AEX	GES



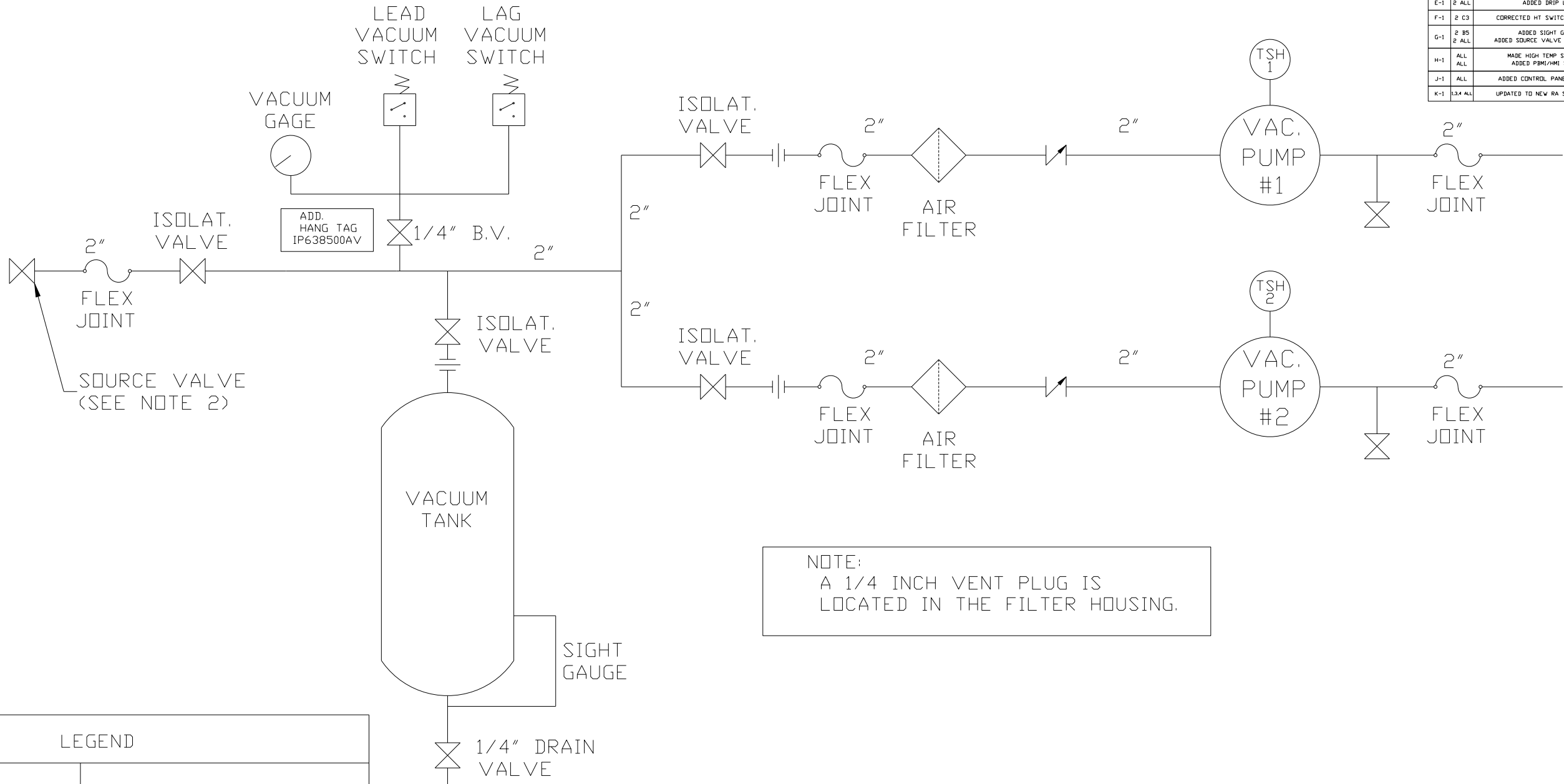
VACUUM SYSTEM:

TOTAL WEIGHT: 1990 LBS
C.O.G. DIMENSIONS
X (FRONT): -25.58"
Y (RIGHT): 30.23"
Z (HEIGHT): 25.30"

denotes center of gravity (CG)

SYMBOL LEGEND ⊖ = MINUS DRAFT ⊕ = PLUS DRAFT		REVISIONS = ADDITIONAL CONTROL REQ'D = BRINELL HARDNESS	Drawings to conform to the current revision of the following ANSI standards: Y14.3 Multi- and sectional view dsgs. Y14.5M Dimensioning and tolerancing	
TOLERANCES NOT SPECIFIED .XX ± .XXX ± <<DEG.> ±		AUTOCAD REL2008 LT INCH	DO NOT SCALE DRAWING FOR DIMENSIONS	
CONFIDENTIAL DISCLOSURE This drawing is the property of POWEREX, INC. of the SCOTT FETZER COMPANY and subject to return on demand. Its contents are confidential and must not be copied or submitted to outside parties for use or examination.		DRAWN BY AEX	CHECKED BY GES	APPROVED BY DMS
MATERIAL N/A		12/16/09		12/16/09
PART NAME 7.5HP VAC PKG		12/16/09		12/16/09
CENTER OF GRAVITY		VPD0754		SIZE D

REV	ZONE	REVISION	DATE	ECN	NAME	CHKD
B-1	ALL	RELEASE TO PRODUCTION	2/29/08	21881	AEK	GES
B-2	1 ALL	MOVED PRESSURE GAUGE TO PANEL	3/18/08	21881	AEK	GES
B-3	1 ALL	SWITCHED OUT P/N AM01200AV FOR P/N AM01200AV	3/25/08	21881	AEK	GES
B-4	1 ALL	MOVED BOTH PUMPS TO THE RIGHT SIDE OF THE TANK/ PANEL SKID	4/10/08	21881	AEK	GES
C-1	2 ALL	REMOVED LOW OIL LIGHT OPTION	7/22/08	21906	AEK	GES
D-1	1 ALL	REMOVED VACUUM SWITCHES FROM PANEL	10/8/09	22127	AEK	GES
D-2	ALL	ADDED SHEET 3 & 4	12/16/09	22127	AEK	GES
E-1	2 ALL	ADDED DRIP LEG	5/10/10	22348	AEK	DMS
F-1	2 G3	CORRECTED HT SWITCH LOCATION	3/20/12	22772	AEK	GES
G-1	2 BS 2 ALL	ADDED SIGHT GAUGE ADDED SOURCE VALVE INFORMATION	12/7/12	22723	AEK	DMS
H-1	ALL ALL	MADE HIGH TEMP STANDARD ADDED PBM/HMI SHEETS	2/3/14	PXEC0067	AEK	GES
J-1	ALL	ADDED CONTROL PANEL BRACING	9/10/14	PXEC0080	AEK	GES
K-1	1,3,4 ALL	UPDATED TO NEW RA SERIES PUMP	12/8/16	PXEC0148	AEK	GES



NOTE:
A 1/4 INCH VENT PLUG IS
LOCATED IN THE FILTER HOUSING.

LEGEND



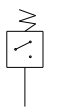
TEMP. SWITCH



AIR FILTER



BALL VALVE



VACUUM SWITCH



CHECK VALVE



FLEX LINE



UNION

NOTES:

- 1) TSH - TEMPERATURE SWITCH HIGH
- 2) PER NFPA THE SYSTEM WILL REQUIRE A SOURCE VALVE (SUPPLIED BY OTHERS).

SYMBOL LEGEND ⊖ = MINUS DRAFT ⊕ = PLUS DRAFT		 = ADDITIONAL CONTROL REQ'D = BRINELL HARDNESS	Drawings to conform to the current revision of the following ANSI standards: Y14.3 Multi and sectional view dgs. Y14.5M Dimensioning and tolerancing	
TOLERANCES NOT SPECIFIED .XX ± .XXX ± Z<DEG> ±		AUTOCAD REL2008 LT	DO NOT SCALE DRAWING FOR DIMENSIONS	
CONFIDENTIAL DISCLOSURE This drawing is the property of POWEREX, INC. OF THE SCOTT FETZER COMPANY and subject to return on demand. Its contents are confidential and must not be copied or submitted to outside parties for use or examination.		SCALE INCH	Sheet 2 of 4	SCALE 1: 12
DRAWN BY AEK		CHECKED BY GES	APPROVED BY DMS	RJR
MATERIAL N/A		2/28/08	2/29/08	2/29/08
PART NAME VACUUM PACKAGE DUPLEX		 150 PRODUCTION DRIVE, HARRISON, OHIO 45030 Ph: 888-769-7979 FAX: (513) 367-3125		SIZE D
DVG NO VPD0754		VPD0754B.dwg		

REV	ZONE	REVISION	DATE	ECN	NAME	CHKD
H-1	ALL	MADE HIGH TEMP STANDARD ADDED PBMI/HMI SHEETS	2/3/14	PXEC0067	AEK	GES
J-1	ALL	ADDED CONTROL PANEL BRACING	9/10/14	PXEC0080	AEK	GES
K-1	ALL	UPDATED TO NEW RA SERIES PUMP	12/8/16	PXEC0148	AEK	GES

MINIMUM RECOMMENDED
ELECTRICAL PANEL
CLEARANCE PER OSHA/ NEC
REQUIREMENTS

MINIMUM RECOMMENDED
MAINTENANCE CLEARANCE


PBMI
CONTROL
PANEL

2X 2" MNPT
OUTLET

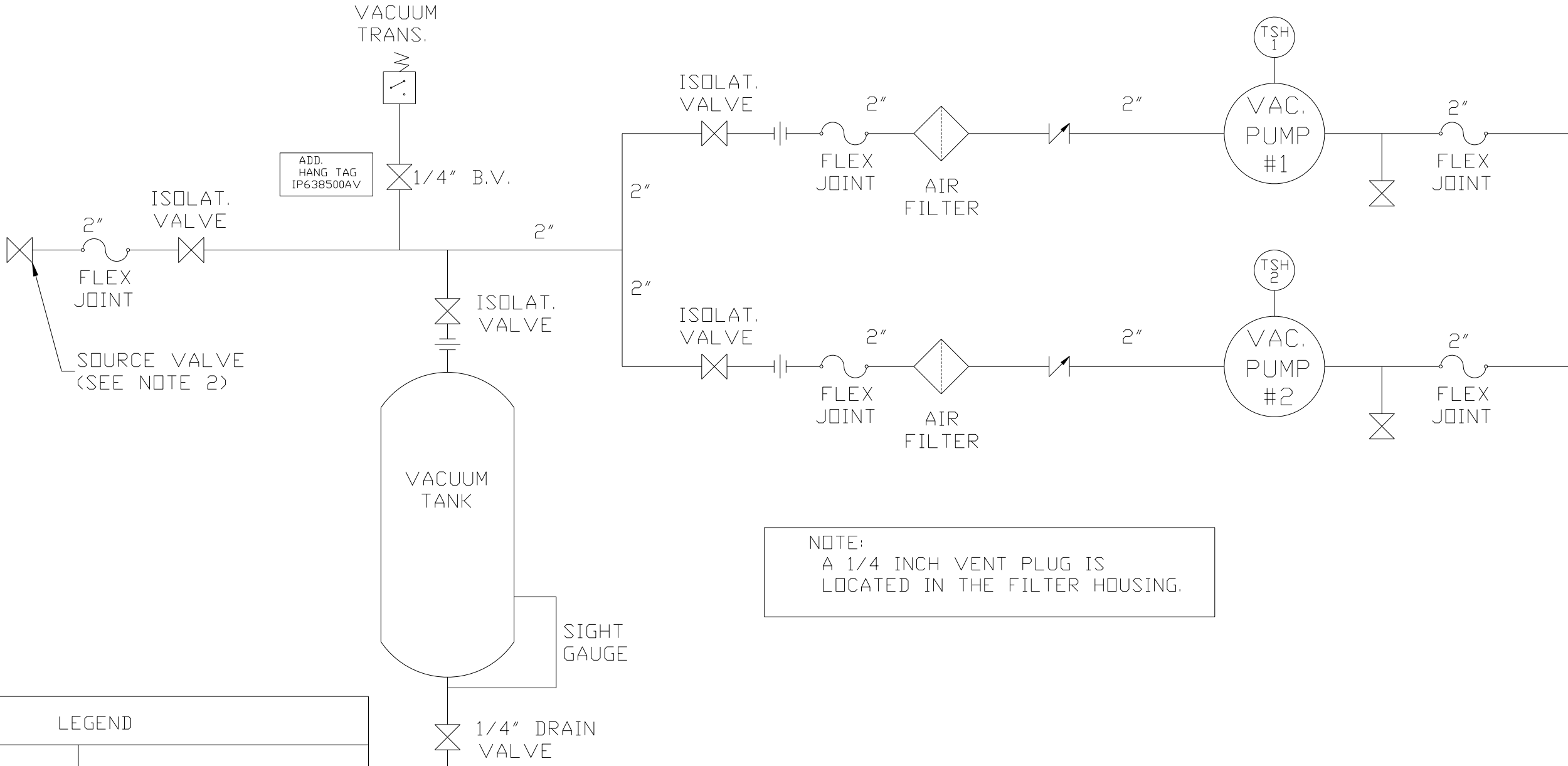
2" MNPT
INLET

120GAL ASME
RECEIVER

NOTE: SYSTEM DESIGNED IN
COMPLIANCE WITH U.S. NFPA '99,
LATEST EDITION.

SYMBOL LEGEND		= ADDITIONAL CONTROL REQ'D = BRINELL HARDNESS		Drawings to conform to the current revision of the following ANSI standards: Y14.3 Multi and sectional view dgs. Y14.5M Dimensioning and tolerancing	
TOLERANCES NOT SPECIFIED .XX ± .XXX ± <DEG> ±		AUTOCAD REL2014 LT INCH		DO NOT SCALE DRAWING FOR DIMENSIONS Sheet 1 of 4 SCALE 1: 12	
CONFIDENTIAL DISCLOSURE This drawing is the property of POWEREX, INC. of the SCOTT FELTZER COMPANY and subject to return on demand. Its contents are confidential and must not be copied or submitted to outside parties for use or examination.		DRAWN BY AEK 2/3/14	CHECKED BY GES 2/3/14	APPROVED BY ENGINEERING DMS 2/3/14	MFG/MKTG JJ 2/3/14
MATERIAL		N/A		 150 PRODUCTION DRIVE, HARRISON, OHIO 45030 Ph: 888-769-7979 FAX: (513) 367-3125	
PART NAME		7. 5HP. VACUUM 120GAL. DUPLEX		DWG NO VPD0754 SIZE D	

REV	ZONE	REVISION	DATE	ECN	NAME	CHKD
H-1	ALL	MADE HIGH TEMP STANDARD ADDED PBM/HMI SHEETS	2/3/14	PXEC0067	AEK	GES
J-1	ALL	ADDED CONTROL PANEL BRACING	9/10/14	PXEC0080	AEK	GES
K-1	ALL	UPDATED TO NEW RA SERIES PUMP	12/8/16	PXEC0148	AEK	GES



LEGEND

TSH 2

TEMP. SWITCH

AIR FILTER

BALL VALVE

VACUUM SWITCH

CHECK VALVE

FLEX LINE

UNION

NOTES:

1) TSH - TEMPERATURE SWITCH HIGH

2)PER NFPA THE SYSTEM WILL REQUIRE A SOURCE VALVE (SUPPLIED BY OTHERS).

SYMBOL LEGEND

= MINUS DRAFT

= PLUS DRAFT

= ADDITIONAL CONTROL REQ'D

= BRINELL HARDNESS

Drawings to conform to the current revision of the following ANSI standards:
Y14.3 Multi and sectional view dgs.
Y14.5M Dimensioning and tolerancing

TOLERANCES NOT SPECIFIED

.XX ±

.XXX ±

∠<DEG> ±

AUTOCAD REL2014 LT

INCH

DO NOT SCALE DRAWING FOR DIMENSIONS

Sheet 2 of 4

SCALE 1: 12

CONFIDENTIAL DISCLOSURE

This drawing is the property of POWEREX, INC. of the SCOTT FELTZER COMPANY and subject to return on demand. Its contents are confidential and must not be copied or submitted to outside parties for use or examination.

DRAWN BY

AEK

2/3/14

CHECKED BY

GES

2/3/14

APPROVED BY

DMS

2/3/14

ENGINEERING

JJ

2/3/14

MATERIAL

N/A

PART NAME

DUPLEX VACUUM PKG

FLOW SCHEMATIC

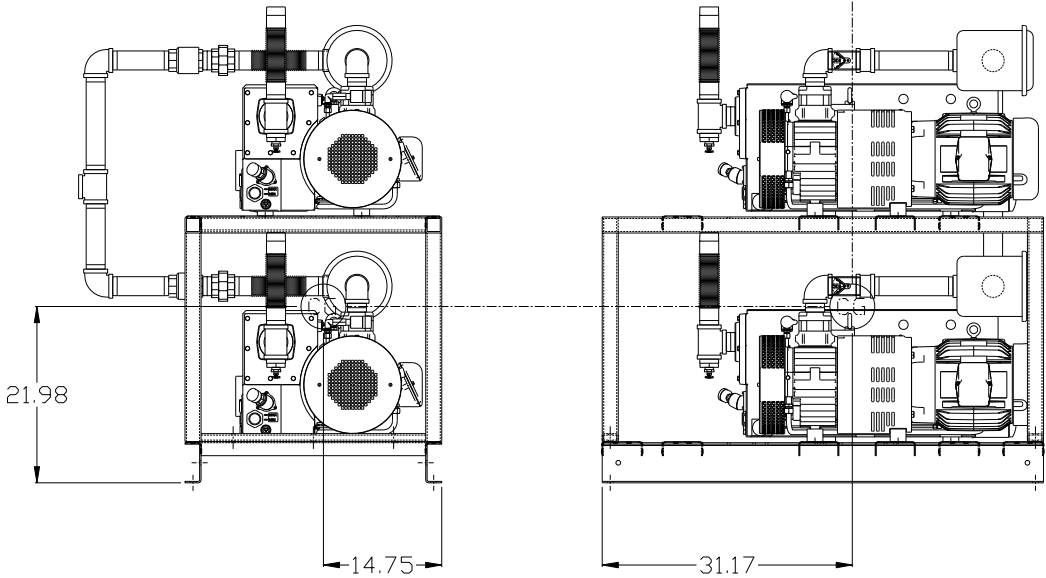
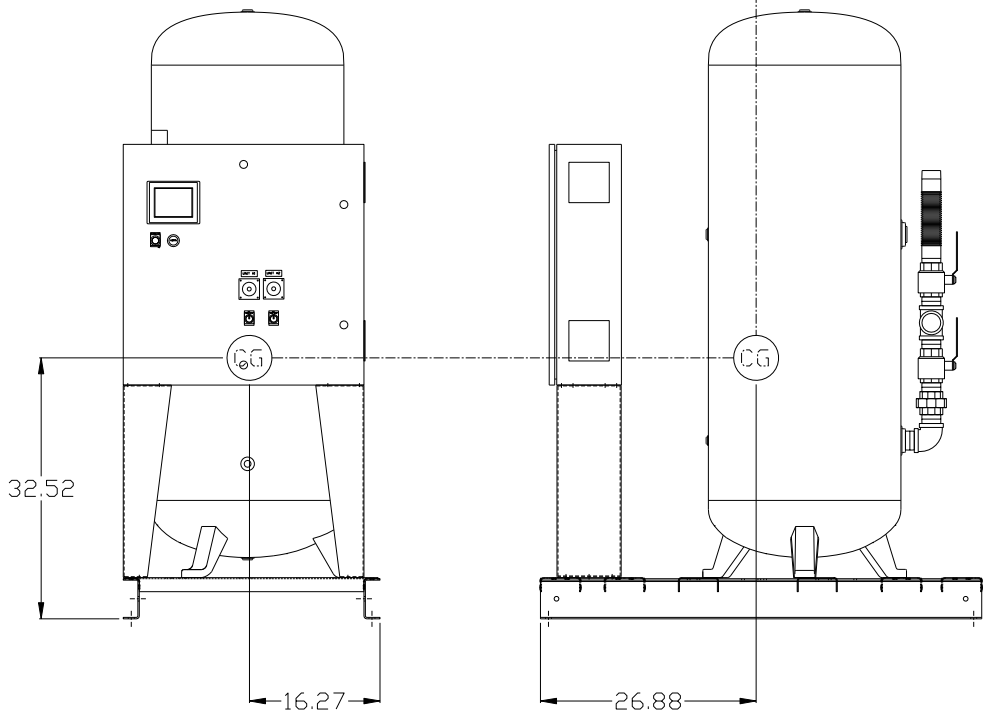
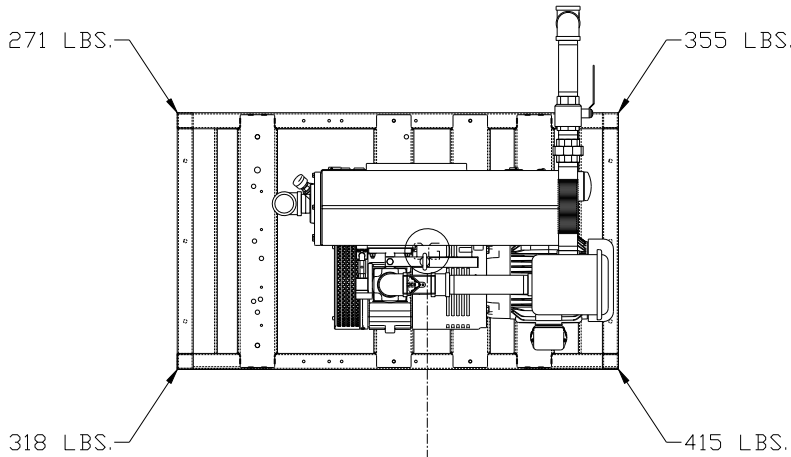
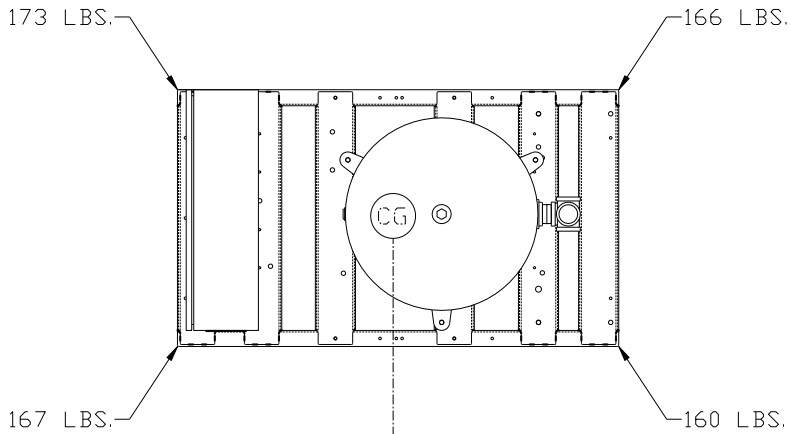
DWG NO

VPD0754

SIZE

D

REV	ZONE	REVISION	DATE	ECN	NAME	CHKD
H-1	ALL	MADE HIGH TEMP STANDARD ADDED PBM/HMI SHEETS	2/3/14	PXEC0067	AEK	GES
J-1	ALL	ADDED CONTROL PANEL BRACING	9/10/14	PXEC0080	AEK	GES
K-1	ALL	UPDATED TO NEW RA SERIES PUMP	12/8/16	PXEC0148	AEK	GES





PANEL/TANK SKID:

TOTAL WEIGHT: 666 LBS
C.O.G. DIMENSIONS
X (FRONT): -16.27"
Y (RIGHT): 26.88"
Z (HEIGHT): 32.52"

PUMP SKID:

TOTAL WEIGHT: 1359 LBS
C.O.G. DIMENSIONS
X (FRONT): -14.75"
Y (RIGHT): 31.17"
Z (HEIGHT): 21.98"

denotes center of gravity (CG)

SYMBOL LEGEND			= ADDITIONAL CONTROL REQ'D	Drawings to conform to the current revision of the following ANSI standards: Y14.3 Multi and sectional view dgs. Y14.5M Dimensioning and tolerancing					
⊖ = MINUS DRAFT									
⊕ = PLUS DRAFT			= BRINELL HARDNESS						
TOLERANCES NOT SPECIFIED		AUTOCAD REL2014 LT		DO NOT SCALE DRAWING FOR DIMENSIONS					
.XX ±		INCH		SCALE					
.XXX ±				1: 12					
Z<DEG> ±		Sheet 3 of 4							
CONFIDENTIAL DISCLOSURE This drawing is the property of POWEREX, INC. of the SCOTT FELTZER COMPANY and subject to return on demand. Its contents are confidential and must not be copied or submitted to outside parties for use or examination.									
						DRAWN BY		CHECKED BY	
						AEK		GES	
						2/3/14		2/3/14	
MATERIAL									
N/A									
PART NAME									
7.5HP VAC PKG									
CENTER OF GRAVITY									
VPD0754									
DWG NO				SIZE					
				D					

