

| REV | ZONE | REVISION | DATE | ECN | NAME | CHKD |
|-----|---------|--|----------|----------|------|------|
| B-1 | ALL | RELEASE TO PRODUCTION | 2/29/08 | 21881 | AEK | GES |
| B-2 | 1 ALL | MOVED PRESSURE GAUGE TO PANEL | 3/18/08 | 21881 | AEK | GES |
| B-3 | ALL | ADDED ADDITIONAL LAYOUT SWITCHES TO SHORT TOP FRAMES | 3/26/08 | 21881 | AEK | GES |
| B-4 | ALL | MOVED PUMPS TO OPPOSITE SIDE OF TANK SKID | 4/10/08 | 21881 | AEK | GES |
| C-1 | 2 ALL | REMOVED LOW OIL LIGHT OPTION | 7/22/08 | 21907 | AEK | GES |
| C-2 | ALL | REMOVED ADDITIONAL LAYOUT | 12/10/08 | 21907 | AEK | DMS |
| D-1 | 1 ALL | REMOVED VACUUM SWITCHES FROM PANEL | 10/8/09 | 22127 | AEK | GES |
| E-1 | 2 C3.03 | ADDED DRIP LEGS | 5/20/11 | 22544 | AEK | DMS |
| F-1 | 2 C3.03 | MOVED TEMP SWITCHES TO PUMPS | 7/9/12 | 22772 | AEK | DMS |
| G-1 | 2 BS | ADDED SIGHT GAUGE | 4/10/13 | PXEC0030 | AEK | GES |
| G-2 | 2 ALL | ADDED SOURCE VALVE INFORMATION | 3/27/14 | PXEC0066 | AEK | GES |
| H-1 | ALL | ADDED CENTER OF GRAVITY INFORMATION (SHEETS 3 & 4) | 9/9/15 | PXEC0093 | AEK | DMS |
| J-1 | ALL | ADDED P&ID SHEETS | 11/23/16 | PXEC0148 | AEK | GES |
| K-1 | ALL | UPDATED TO RA SERIES PUMP | | | | |

MINIMUM RECOMMENDED ELECTRICAL PANEL CLEARANCE PER OSHA/NEC REQUIREMENTS

MINIMUM RECOMMENDED MAINTENANCE CLEARANCE

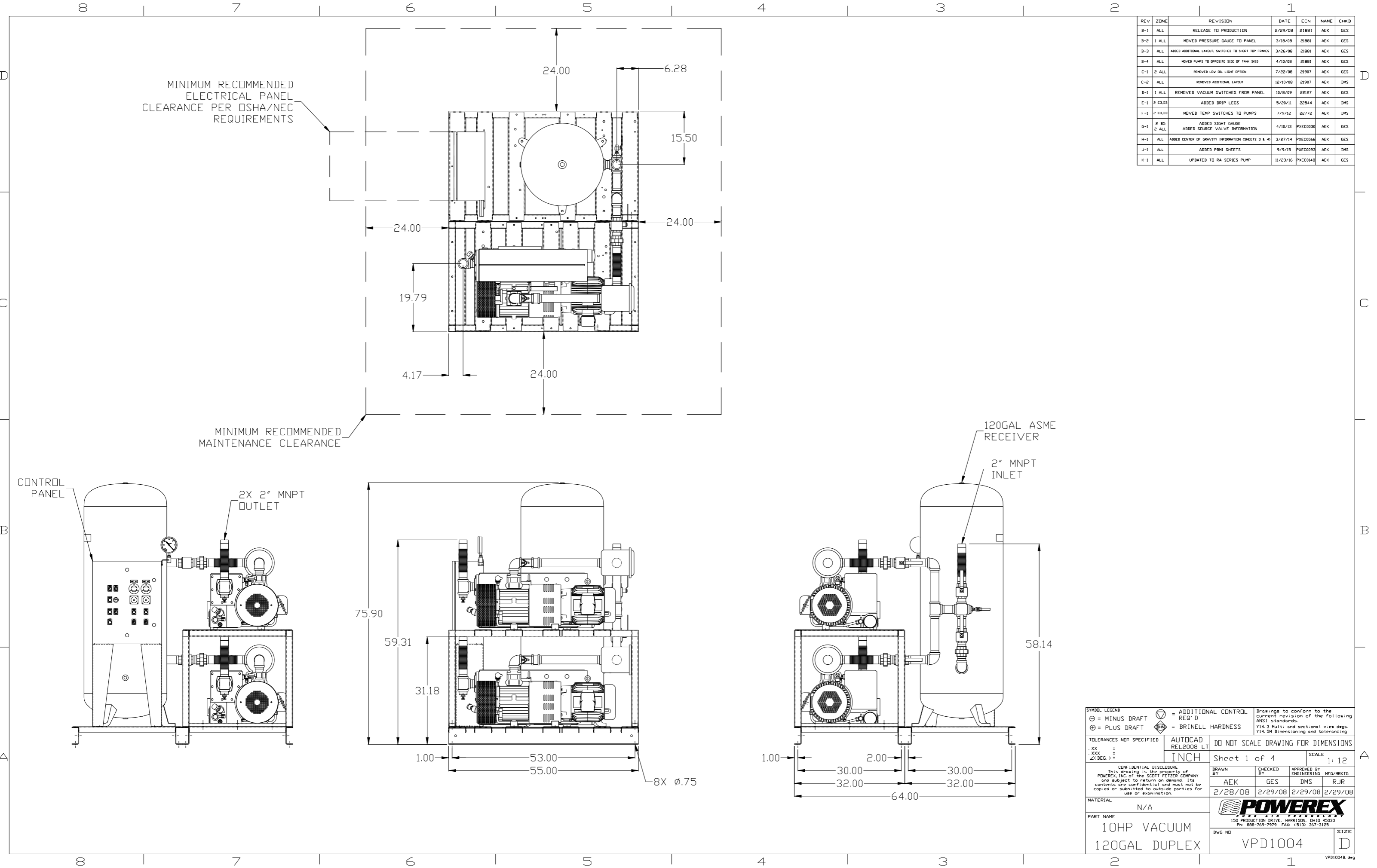
CONTROL PANEL

2X 2" MNPT OUTLET

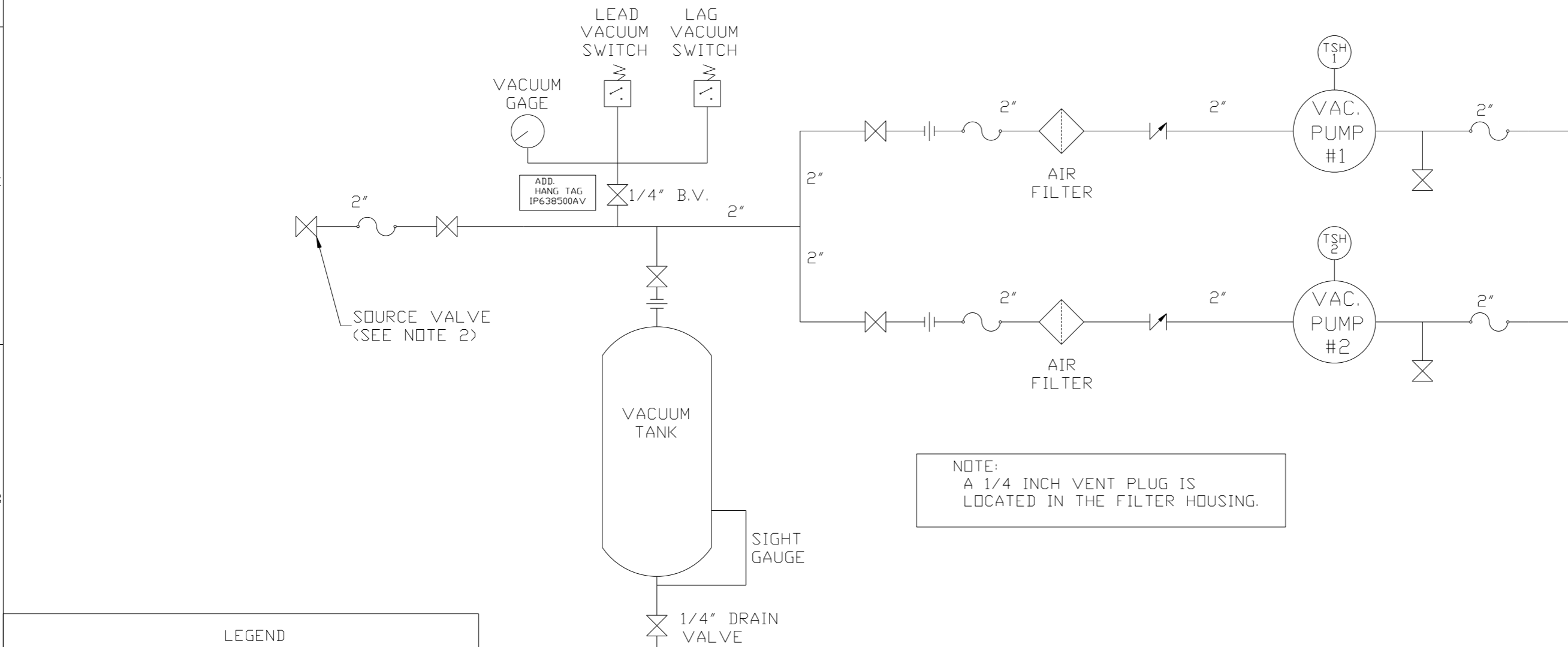
120GAL ASME RECEIVER

2" MNPT INLET

| | | | | | | |
|---|--|-----------------|----------------|------------------------------|----------------------|--|
| SYMBOL LEGEND | | ⊕ = MINUS DRAFT | ⊖ = PLUS DRAFT | ⊕ = ADDITIONAL CONTROL REQ'D | ⊖ = BRINELL HARDNESS | Drawings to conform to the current revision of the following ANSI standards: Y14.3 Multi and sectional view dgs. Y14.5M Dimensioning and tolerancing |
| TOLERANCES NOT SPECIFIED | | .XX ± | .XXX ± | <DEG> ± | AUTOCAD REL2008 LT | DO NOT SCALE DRAWING FOR DIMENSIONS |
| CONFIDENTIAL DISCLOSURE This drawing is the property of POWEREX, INC. of the SCOTT FELTZER COMPANY and subject to return on demand. Its contents are confidential and must not be copied or submitted to outside parties for use or examination. | | SCALE | | Sheet 1 of 4 | | 1:12 |
| DRAWN BY | | AEK | CHECKED BY | GES | APPROVED BY | DMS RJR |
| MATERIAL | | N/A | | 2/28/08 | | 2/29/08 2/29/08 2/29/08 |
| PART NAME | | 10HP VACUUM | | 120GAL DUPLEX | | SIZE D |
| DWG NO | | VPD1004 | | | | VPD1004B.dwg |



| REV | ZONE | REVISION | DATE | ECN | NAME | CHKD |
|-----|---------------|--|----------|----------|------|------|
| B-1 | ALL | RELEASE TO PRODUCTION | 2/29/08 | 21881 | AEK | GES |
| B-2 | 1 ALL | MOVED PRESSURE GAUGE TO PANEL | 3/18/08 | 21881 | AEK | GES |
| B-3 | ALL | ADDED ADDITIONAL LAYOUT SWITCHES TO SHORT TOP FRAMES | 3/26/08 | 21881 | AEK | GES |
| B-4 | ALL | MOVED PUMPS TO OPPOSITE SIDE OF TANK SKID | 4/10/08 | 21881 | AEK | GES |
| C-1 | 2 ALL | REMOVED LOW OIL LIGHT OPTION | 7/22/08 | 21907 | AEK | GES |
| C-2 | ALL | REMOVED ADDITIONAL LAYOUT | 12/10/08 | 21907 | AEK | DMS |
| D-1 | 1 ALL | REMOVED VACUUM SWITCHES FROM PANEL | 10/8/09 | 22127 | AEK | GES |
| E-1 | 2 C3.03 | ADDED DRIP LEGS | 5/20/11 | 22544 | AEK | DMS |
| F-1 | 2 C3.03 | MOVED TEMP SWITCHES TO PUMPS | 7/9/12 | 22772 | AEK | DMS |
| G-1 | 2 B5 2 ALL | ADDED SIGHT GAUGE ADDED SOURCE VALVE INFORMATION | 4/10/13 | PXEC0030 | AEK | GES |
| H-1 | ALL | ADDED CENTER OF GRAVITY INFORMATION (SHEETS 3 & 4) | 3/27/14 | PXEC0066 | AEK | GES |
| J-1 | ALL | ADDED P&MI SHEETS | 9/9/15 | PXEC0093 | AEK | DMS |
| K-1 | ALL | UPDATED TO RA SERIES PUMP | 11/23/16 | PXEC0148 | AEK | GES |



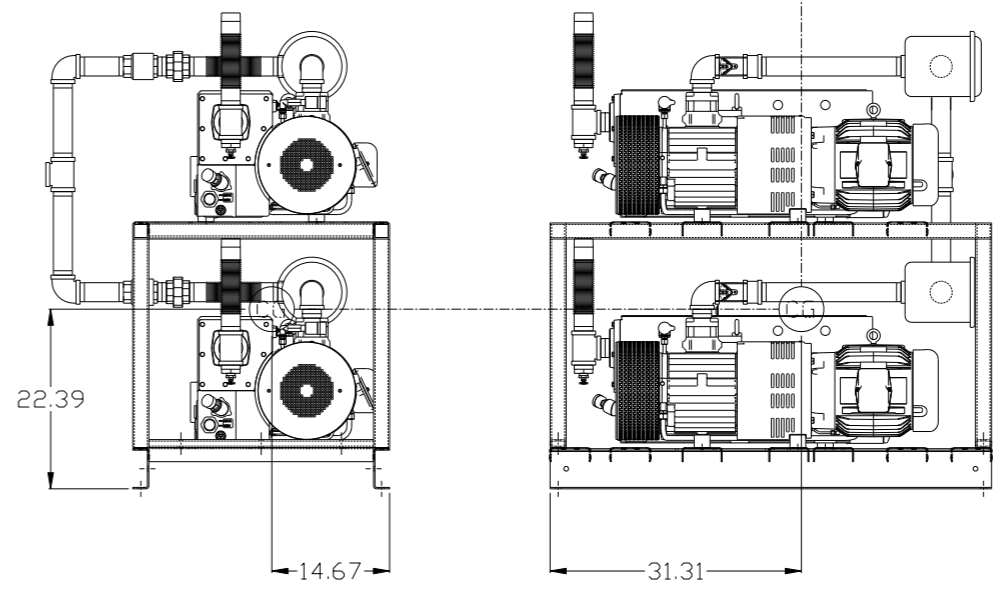
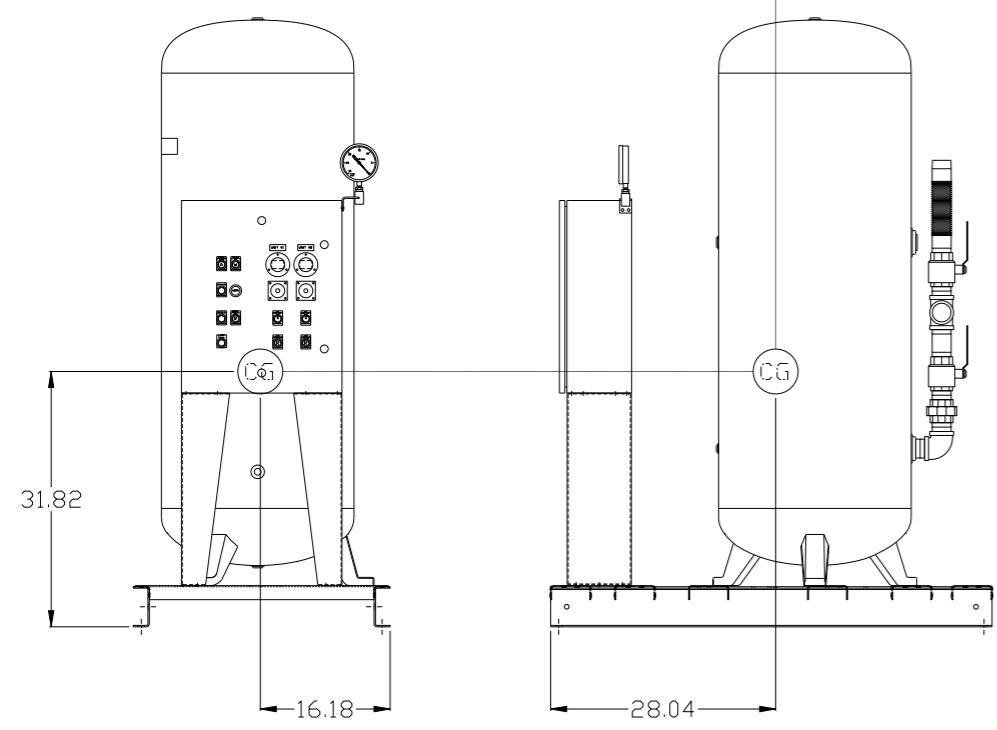
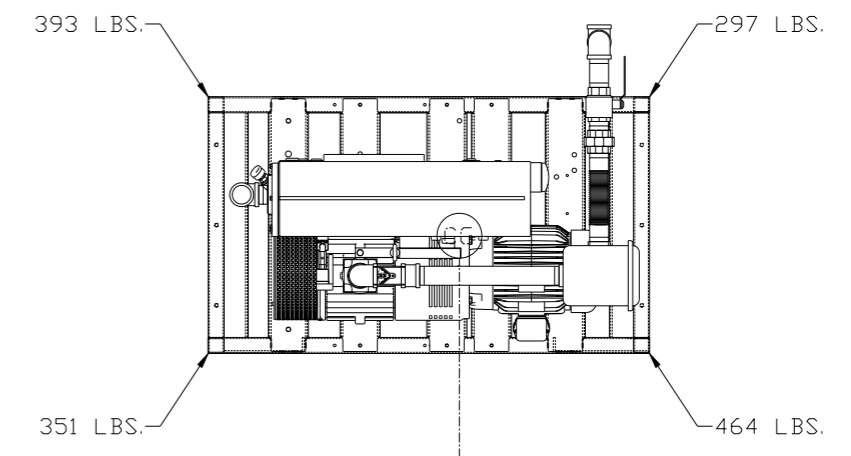
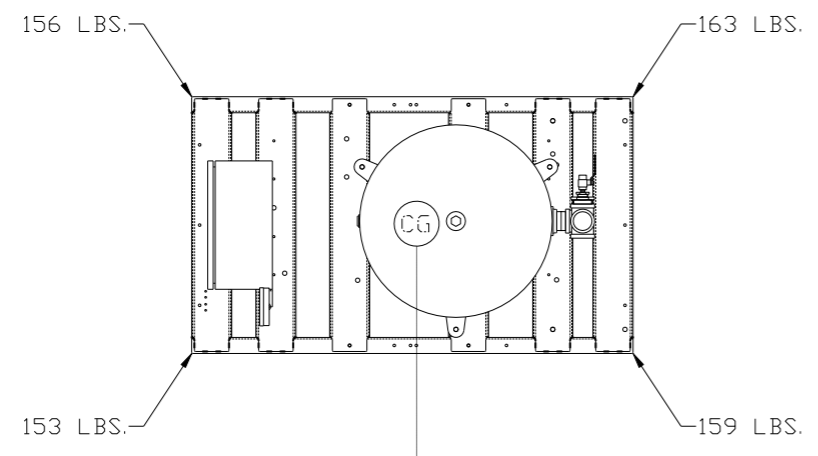
NOTE:
A 1/4 INCH VENT PLUG IS
LOCATED IN THE FILTER HOUSING.

| LEGEND | |
|--------|---------------|
| | TEMP. SWITCH |
| | AIR FILTER |
| | BALL VALVE |
| | VACUUM SWITCH |
| | CHECK VALVE |
| | FLEX LINE |
| | UNION |

NOTES:
1) TSH - TEMPERATURE SWITCH HIGH
2) PER NFPA THE SYSTEM WILL REQUIRE A SOURCE VALVE (SUPPLIED BY OTHERS).

| | | | | |
|--|--------------------|-------------------------------------|--------------------------|--|
| SYMBOL LEGEND | | | ADDITIONAL CONTROL REQ'D | Drawings to conform to the current revision of the following ANSI standards: |
| | MINUS DRAFT | | BRINELL HARDNESS | Y14.3 Multi and sectional view dsgs. Y14.5M Dimensioning and tolerancing |
| TOLERANCES NOT SPECIFIED | | DO NOT SCALE DRAWING FOR DIMENSIONS | | |
| .XX ± | AUTOCAD REL2008 LT | Sheet 2 of 4 | | SCALE 1:12 |
| .XXX ± | | | | |
| <<DEG>> ± | | | | |
| CONFIDENTIAL DISCLOSURE This drawing is the property of POWEREX, INC. or the SCOTT FETZER COMPANY and subject to return on demand. Its contents are confidential and must not be copied or submitted to outside parties for use or examination. | | | | |
| DRAWN BY | | CHECKED BY | APPROVED BY | |
| AEK | | GES | DMS RJR | |
| 2/28/08 | | 2/29/08 | 2/29/08 2/29/08 | |
| MATERIAL | | N/A | | |
| PART NAME | | VACUUM PACKAGE | | |
| DUPLX | | VPD1004 | | |
| DWG NO | | VPD1004 | | |
| SIZE | | D | | |

| REV | ZONE | REVISION | DATE | ECN | NAME | CHKD |
|-----|------|--|----------|----------|------|------|
| H-1 | ALL | ADDED CENTER OF GRAVITY INFORMATION (SHEETS 3 & 4) | 3/27/14 | PXEC0066 | AEK | GES |
| J-1 | ALL | ADDED P&ID SHEETS | 9/9/15 | PXEC0093 | AEK | DMS |
| K-1 | ALL | UPDATED TO RA SERIES PUMP | 11/23/16 | PXEC0148 | AEK | GES |



denotes center of gravity (CG)

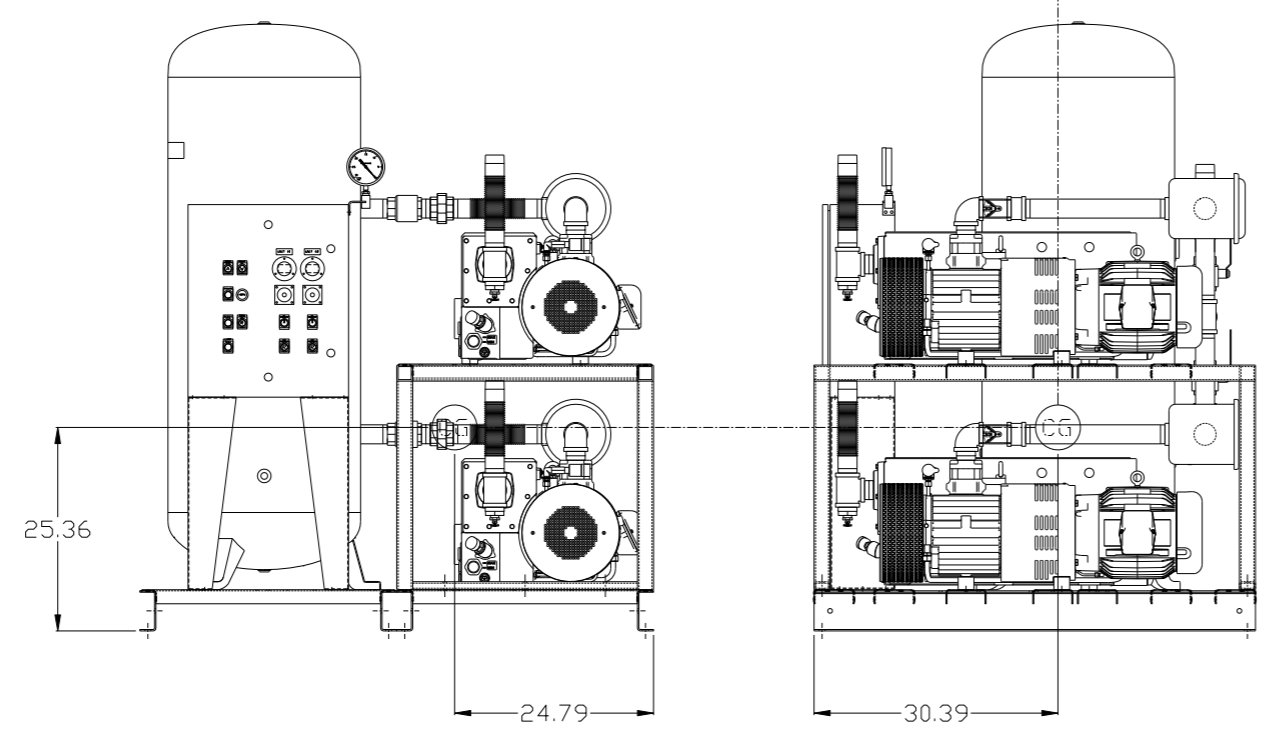
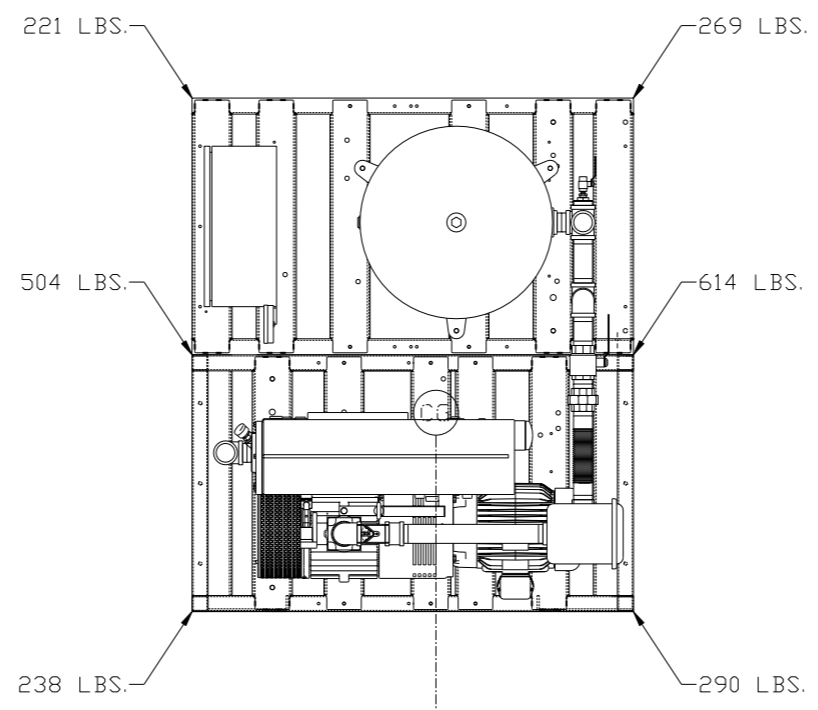
PANEL/TANK SKID:
 TOTAL WEIGHT: 631 LBS
 C.O.G. DIMENSIONS
 X (FRONT): -16.17"
 Y (RIGHT): 28.04"
 Z (HEIGHT): 31.82"

PUMP SKID:
 TOTAL WEIGHT: 1505 LBS
 C.O.G. DIMENSIONS
 X (FRONT): -14.67"
 Y (RIGHT): 31.31"
 Z (HEIGHT): 22.39"

| | | | | |
|--|--|--|-------------------|--|
| SYMBOL LEGEND ⊖ = MINUS DRAFT ⊕ = PLUS DRAFT ⊕ = BRINELL HARDNESS | | = ADDITIONAL CONTROL REQ'D = BRINELL HARDNESS | | Drawings to conform to the current revision of the following ANSI standards: Y14.3 Multi and sectional view dgs. Y14.5M Dimensioning and tolerancing |
| TOLERANCES NOT SPECIFIED .XX ± .XXX ± \angle(DEG) ± | | AUTOCAD REL2014 LT INCH | | DO NOT SCALE DRAWING FOR DIMENSIONS Sheet 3 of 4 SCALE 1:12 |
| CONFIDENTIAL DISCLOSURE This drawing is the property of POWEREX, INC. of the SCOTT FEITZER COMPANY and subject to return on demand. Its contents are confidential and must not be copied or submitted to outside parties for use or examination. | | DRAWN BY AEK | CHECKED BY GES | APPROVED BY ENGINEERING MFG/MKTG DMS NW |
| MATERIAL N/A | | DATE 3/27/14 | DATE 3/27/14 | DATE 3/27/14 |
| PART NAME 10HP VACUUM 120GAL DUPLEX | | 150 PRODUCTION DRIVE, HARRISON, OHIO 45030 Ph 888-769-7979 FAX (513) 367-3125 | | DWG NO VPD1004 SIZE D |

8 7 6 5 4 3 2 1

| REV | ZONE | REVISION | DATE | ECN | NAME | CHKD |
|-----|------|--|----------|----------|------|------|
| H-1 | ALL | ADDED CENTER OF GRAVITY INFORMATION (SHEETS 3 & 4) | 3/27/14 | PXEC0066 | AEK | GES |
| J-1 | ALL | ADDED PBM SHEETS | 9/9/15 | PXEC0093 | AEK | DMS |
| K-1 | ALL | UPDATED TO RA SERIES PUMP | 11/23/16 | PXEC0148 | AEK | GES |



denotes center of gravity (CG)

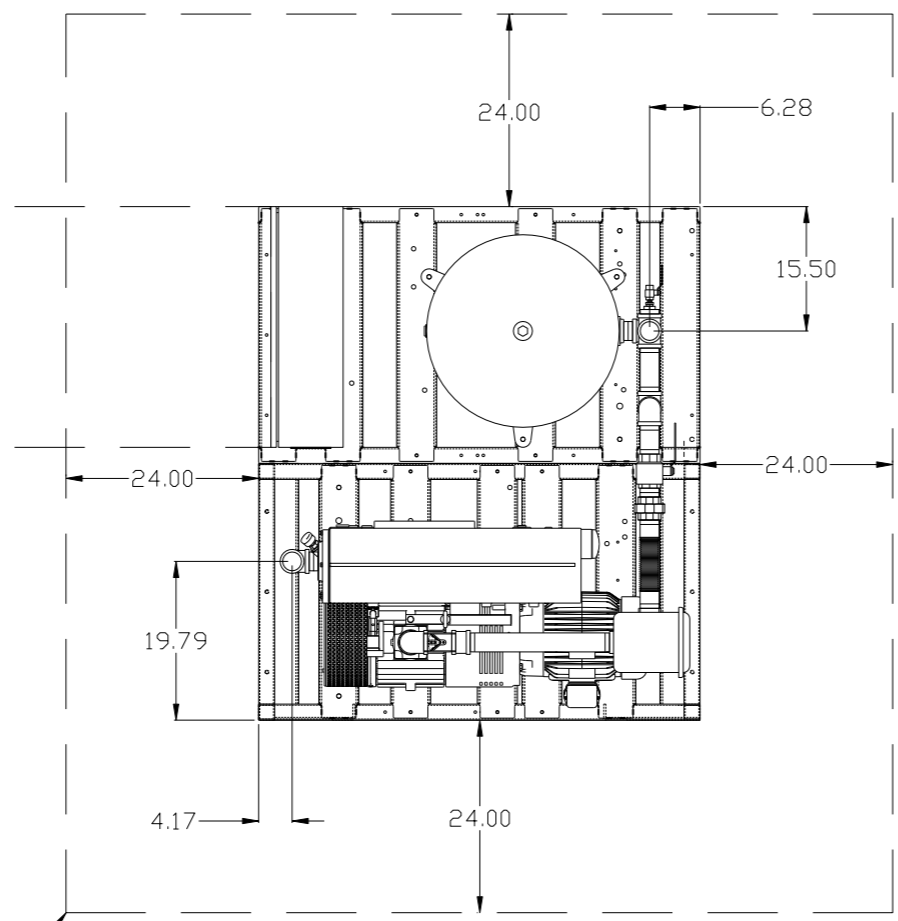
VACUUM SYSTEM:
 TOTAL WEIGHT: 2136 LBS
 C.O.G. DIMENSIONS
 X (FRONT): -24.79"
 Y (RIGHT): 30.39"
 Z (HEIGHT): 25.36"

| | | | |
|--|--|--|--|
| SYMBOL LEGEND ⊖ = MINUS DRAFT ⊕ = PLUS DRAFT ⊕ = ADDITIONAL CONTROL REQ'D HRC = BRINELL HARDNESS | | Drawings to conform to the current revision of the following ANSI standards: Y14.3 Multi and sectional view dgs. Y14.5M Dimensioning and tolerancing | |
| TOLERANCES NOT SPECIFIED .XX ± .XXX ± \angle(DEG.) ± | | DO NOT SCALE DRAWING FOR DIMENSIONS SCALE 1:12 | |
| AUTOCAD REL2014 LT INCH | | Sheet 4 of 4 | |
| CONFIDENTIAL DISCLOSURE This drawing is the property of POWEREX, INC. of the SCOTT FETZER COMPANY and subject to return on demand. Its contents are confidential and must not be copied or submitted to outside parties for use or examination. | | | |
| DRAWN BY AEK | | CHECKED BY GES | |
| APPROVED BY DMS | | APPROVED BY NW | |
| DATE 3/27/14 | | DATE 3/27/14 | |
| DATE 3/27/14 | | DATE 3/27/14 | |
| MATERIAL N/A | | PART NAME 10HP VACUUM 120GAL DUPLEX | |
| DWG NO VPD1004 | | SIZE D | |

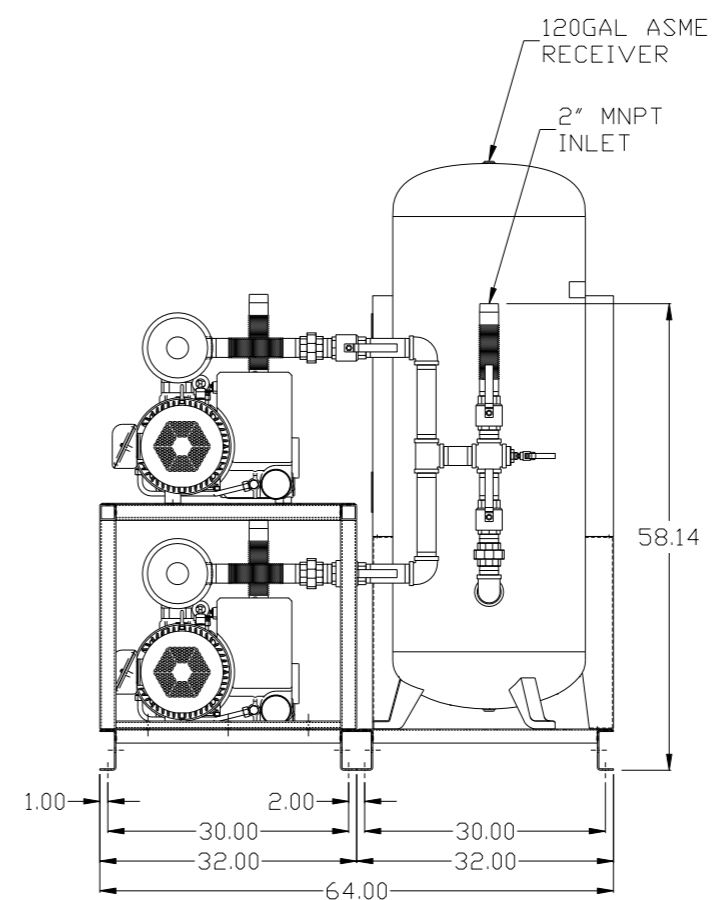
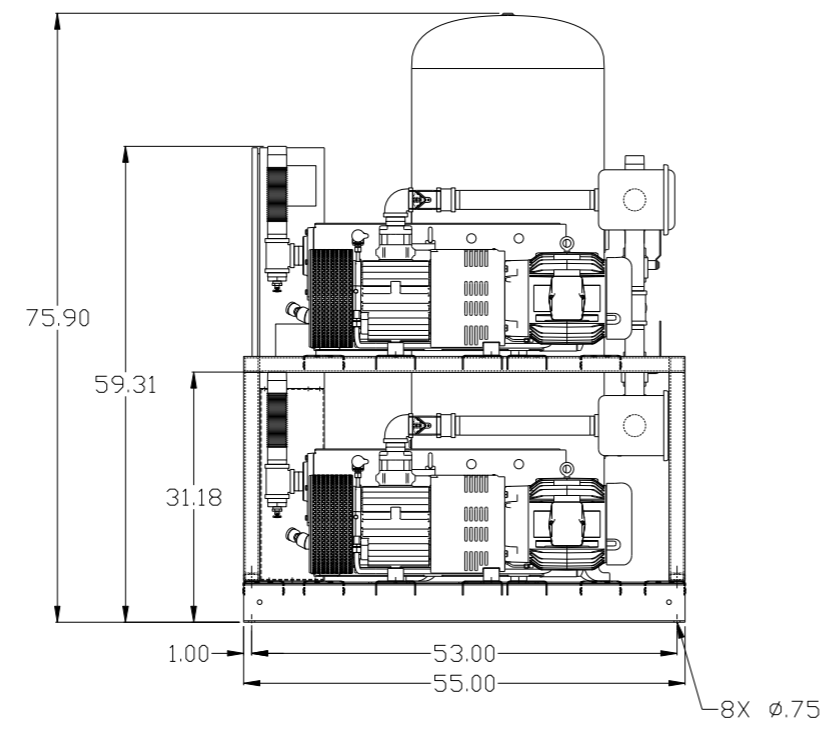
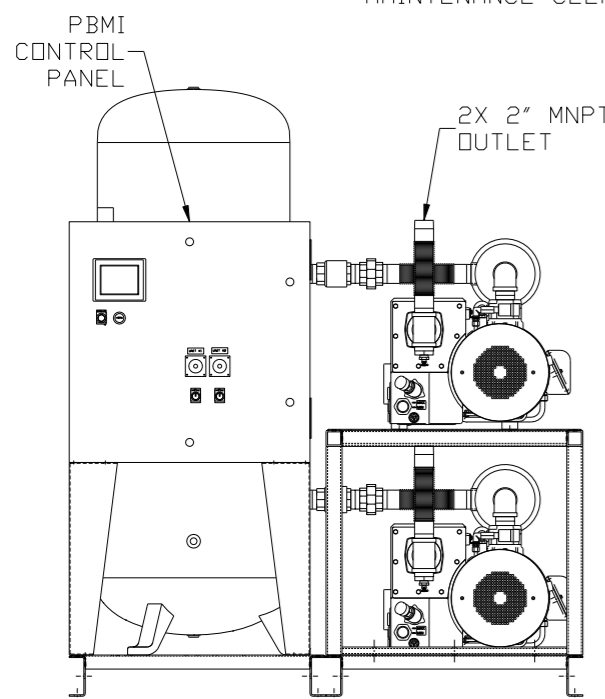
8 7 6 5 4 3 2 1

| REV | ZONE | REVISION | DATE | ECN | NAME | CHKD |
|-----|------|---------------------------|----------|----------|------|------|
| J-1 | ALL | ADDED PBMI SHEETS | 9/9/15 | PXEC0093 | AEK | DMS |
| K-1 | ALL | UPDATED TO RA SERIES PUMP | 11/23/16 | PXEC0148 | AEK | GES |

MINIMUM RECOMMENDED ELECTRICAL PANEL CLEARANCE PER OSHA/NEC REQUIREMENTS

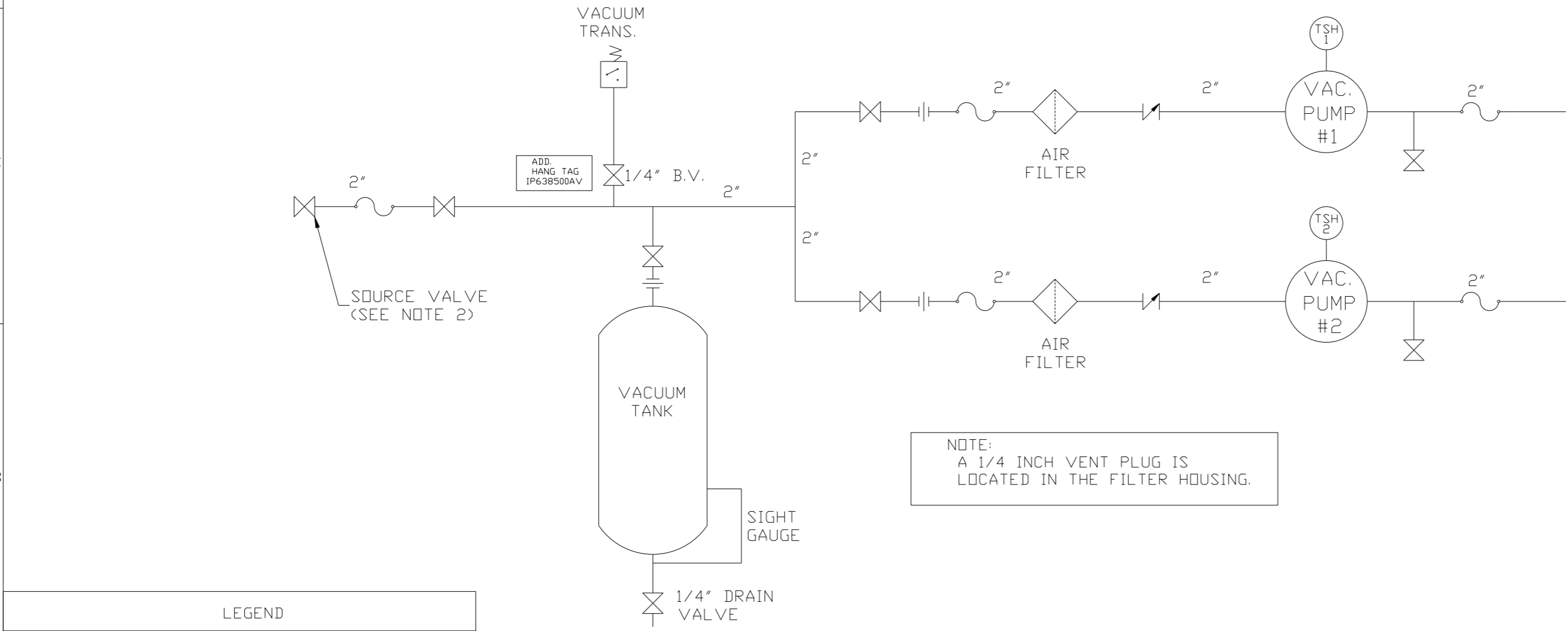


MINIMUM RECOMMENDED MAINTENANCE CLEARANCE



| | | | |
|--|--|--|--|
| SYMBOL LEGEND ⊖ = MINUS DRAFT ⊕ = PLUS DRAFT Ⓢ = ADDITIONAL CONTROL REQ'D Ⓢ = BRINELL HARDNESS | | Drawings to conform to the current revision of the following ANSI standards: Y14.3 Multi and sectional view dsgs. Y14.5M Dimensioning and tolerancing | |
| TOLERANCES NOT SPECIFIED .XX ± .XXX ± \angle (DEG) ± | | DO NOT SCALE DRAWING FOR DIMENSIONS Sheet 1 of 4 SCALE 1:12 | |
| CONFIDENTIAL DISCLOSURE This drawing is the property of POWEREX, INC. of the SCOTT FEITZER COMPANY and subject to return on demand. Its contents are confidential and must not be copied or submitted to outside parties for use or examination. | | AUTOCAD REL2014 LT INCH | |
| MATERIAL N/A PART NAME 10HP VACUUM 120GAL DUPLEX | | DRAWN BY: AEK CHECKED BY: DMS 9/9/15 APPROVED BY: ENGINEERING MFG/MRKTG KMD JJ 9/9/15 9/9/15 9/9/15 POWEREX 150 PRODUCTION DRIVE, HARRISON, OHIO 45030 Ph: 888-769-7979 FAX: (513) 367-3125 | |
| DWG NO: VPD1004 | | SIZE: D | |

| REV | ZONE | REVISION | DATE | ECN | NAME | CHKD |
|-----|------|---------------------------|----------|----------|------|------|
| J-1 | ALL | ADDED PBMI SHEETS | 9/9/15 | PXEC0093 | AEK | DMS |
| K-1 | ALL | UPDATED TO RA SERIES PUMP | 11/23/16 | PXEC0148 | AEK | GES |



NOTE:
A 1/4 INCH VENT PLUG IS
LOCATED IN THE FILTER HOUSING.

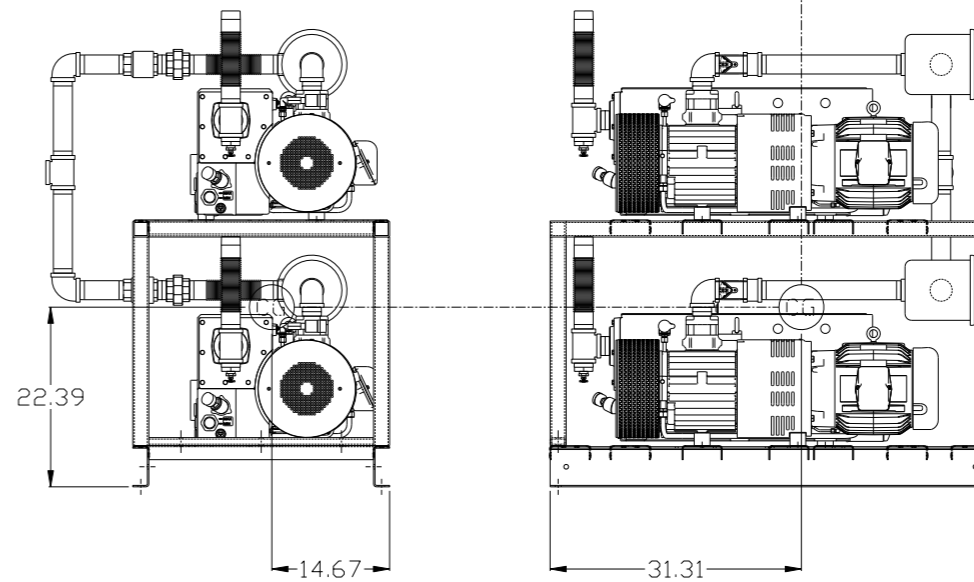
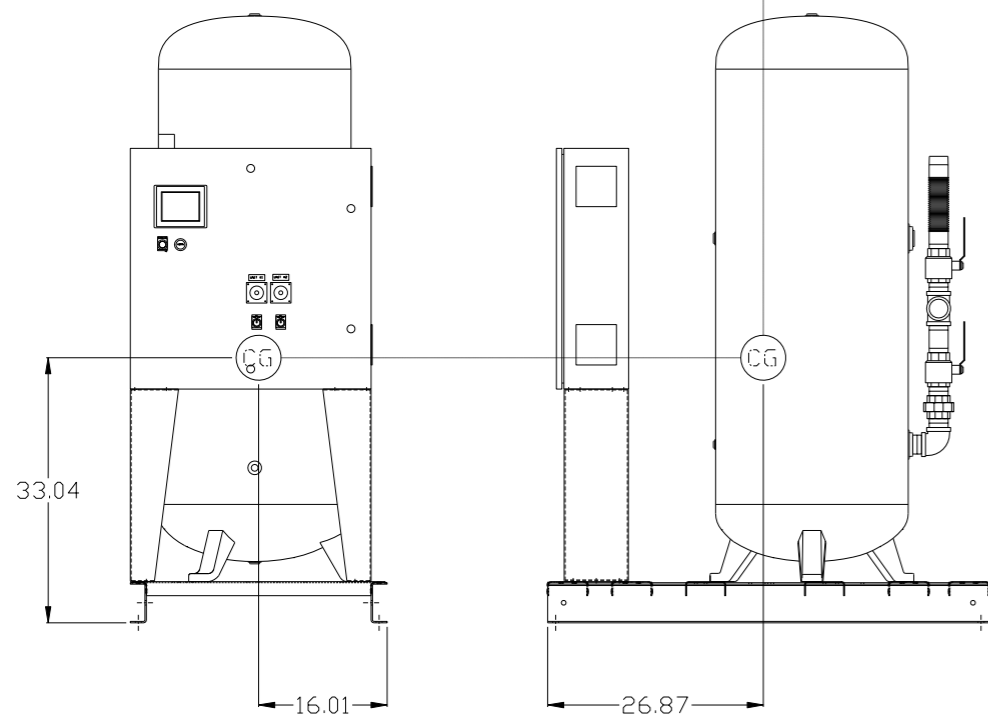
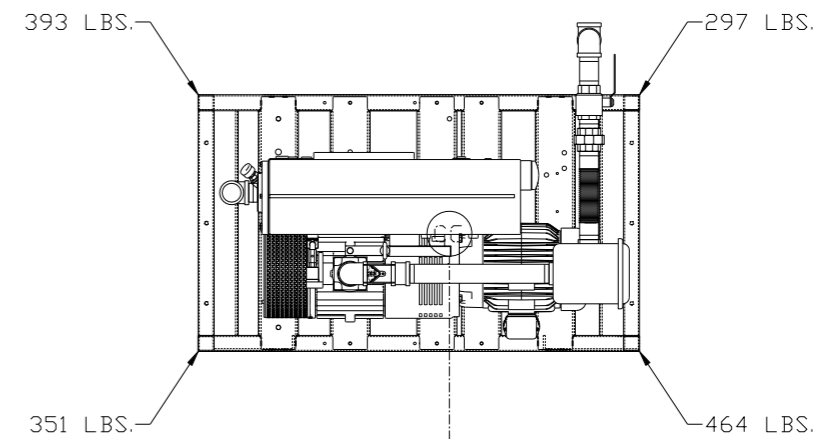
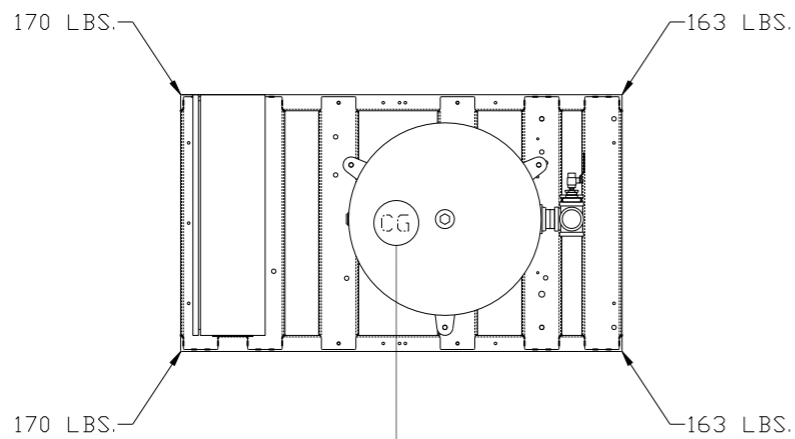
LEGEND

| | | | |
|--|--------------|--|---------------|
| | TEMP. SWITCH | | VACUUM SWITCH |
| | AIR FILTER | | CHECK VALVE |
| | BALL VALVE | | FLEX LINE |
| | | | UNION |

NOTES:
1) TSH - TEMPERATURE SWITCH HIGH
2) PER NFPA THE SYSTEM WILL REQUIRE A SOURCE VALVE (SUPPLIED BY OTHERS).

| | | | | |
|--|---------------|--|-------------------------------------|--|
| SYMBOL LEGEND | | | = ADDITIONAL CONTROL REQ'D | Drawings to conform to the current revision of the following ANSI standards: |
| | = MINUS DRAFT | | = BRINELL HARDNESS | Y14.3 Multi and sectional view dgs. Y14.5M Dimensioning and tolerancing |
| TOLERANCES NOT SPECIFIED | | AUTOCAD REL2014 LT | DO NOT SCALE DRAWING FOR DIMENSIONS | |
| .XX ± | .XXX ± | INCH | Sheet 2 of 4 | SCALE 1:12 |
| CONFIDENTIAL DISCLOSURE This drawing is the property of POWEREX, INC. of the SCOTT FETZER COMPANY and subject to return on demand. Its contents are confidential and must not be copied or submitted to outside parties for use or examination. | | | | |
| DRAWN BY | CHECKED BY | ENGINEERING | MFG/MKTG | |
| AEK | DMS | KMD | JJ | |
| 9/9/15 | 9/9/15 | 9/9/15 | 9/9/15 | |
| MATERIAL N/A | | | | |
| PART NAME VACUUM PACKAGE DUPLEX | | 150 PRODUCTION DRIVE, HARRISON, OHIO 45030 Ph: 888-769-7979 FAX: (513) 367-3125 | | |
| DWG NO VPD1004 | | SIZE D | | |

| REV | ZONE | REVISION | DATE | ECN | NAME | CHKD |
|-----|------|---------------------------|----------|----------|------|------|
| J-1 | ALL | ADDED PBM SHEETS | 9/9/15 | PKEC0093 | AEK | DMS |
| K-1 | ALL | UPDATED TO RA SERIES PUMP | 11/23/16 | PKEC0148 | AEK | GES |



denotes center of gravity (CG)

PANEL/TANK SKID:
 TOTAL WEIGHT: 666 LBS
 C.O.G. DIMENSIONS
 X (FRONT): -16.01"
 Y (RIGHT): 26.87"
 Z (HEIGHT): 33.04"

PUMP SKID:
 TOTAL WEIGHT: 1505 LBS
 C.O.G. DIMENSIONS
 X (FRONT): -14.67"
 Y (RIGHT): 31.31"
 Z (HEIGHT): 22.39"

| SYMBOL LEGEND | | ADDITIONAL CONTROL REQ'D | | Drawings to conform to the current revision of the following ANSI standards: | |
|--|-------------|--------------------------|------------|--|------------|
| ⊖ | MINUS DRAFT | ⊕ | PLUS DRAFT | Ⓡ | GRINDING |
| Ⓡ | GRINDING | Ⓡ | GRINDING | Ⓡ | GRINDING |
| TOLERANCES NOT SPECIFIED | | AUTOCAD REL2014 LT | | DO NOT SCALE DRAWING FOR DIMENSIONS | |
| .XX ± | | INCH | | Sheet 3 of 4 | SCALE 1:12 |
| CONFIDENTIAL DISCLOSURE: This drawing is the property of POWEREX, INC. of the SCOTT FETZER COMPANY and subject to return on demand. Its contents are confidential and must not be copied or submitted to outside parties for use or examination. | | | | | |
| DRAWN BY | | CHECKED BY | | APPROVED BY | |
| AEK | | DMS | | KMD JJ | |
| 9/9/15 | | 9/9/15 | | 9/9/15 9/9/15 | |
| MATERIAL | | N/A | | 150 PRODUCTION DRIVE, HARRISON, OHIO 45030 Ph: 888-769-7979 FAX: (513) 367-3125 | |
| PART NAME | | 10HP VACUUM | | SIZE | |
| 120GAL DUPLEX | | VPD1004 | | D | |