

REV	ZONE	REVISION	DATE	ECN	NAME	CHKD
B-1	ALL	RELEASE TO PRODUCTION	4/25/08	21881	AEK	GES
C-1	2 ALL	REMOVED LOW OIL LIGHT OPTION	7/22/08	21906	AEK	GES
D-1	1 ALL	REMOVED VACUUM SWITCHES FROM PANEL	10/9/09	22127	AEK	GES
E-1	D-2	ADDED DRIP LEGS	03/03/11	22546	DMS	GES
F-1	2 C3.D3	MOVED TEMP SWITCHES TO PUMPS	7/3/12	22772	AEK	DMS
G-1	ALL 2 BS 2 ALL	CHANGED 3" BV/UNIONS TO BUTTERFLY VALVES ADDED SIGHT GAUGE ADDED SOURCE VALVE INFORMATION	5/1/14	PXEC0067	AEK	GES

MINIMUM RECOMMENDED ELECTRICAL PANEL CLEARANCE PER OSHA

200GAL ASME RECEIVER

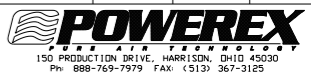
MINIMUM RECOMMENDED MAINTENANCE CLEARANCE

2X 3" MNPT OUTLET

3" MNPT INLET

CONTROL PANEL

NOTE: SYSTEM DESIGNED IN COMPLIANCE WITH U.S. NFPA '99, LATEST EDITION.

<b>SYMBOL LEGEND</b> ⊖ = MINUS DRAFT ⊕ = PLUS DRAFT TOLERANCES NOT SPECIFIED .XX ± .XXX ± << DEG > ±		= ADDITIONAL CONTROL REQ'D = BRINELL HARDNESS		Drawings to conform to the current revision of the following ANSI standards: Y14.3 Multi and sectional view dsgs. Y14.5M Dimensioning and tolerancing
AUTOCAD REL2008 LT INCH		DO NOT SCALE DRAWING FOR DIMENSIONS Sheet 1 of 2 SCALE 1:16		
<b>CONFIDENTIAL DISCLOSURE</b> This drawing is the property of the CAMPBELL GROUP of the SCOTT FETZER COMPANY and subject to return on demand. Its contents are confidential and must not be copied or submitted to outside parties for use or examination.		DRAWN BY AEK	CHECKED BY GES	APPROVED BY ENGINEERING MFG/MKTG DMS RJR
MATERIAL N/A		4/25/08	4/25/08	4/25/08 4/25/08
PART NAME 20HP. VACUUM 200GAL. DUPLEX		 150 PRODUCTION DRIVE, HARRISON, OHIO 45030 Ph 888-769-7979 FAX (513) 367-3125		DWG NO VPD2005 SIZE D

8 7 6 5 4 3 2 1

8 7 6 5 4 3 2 1

D

D

C

C

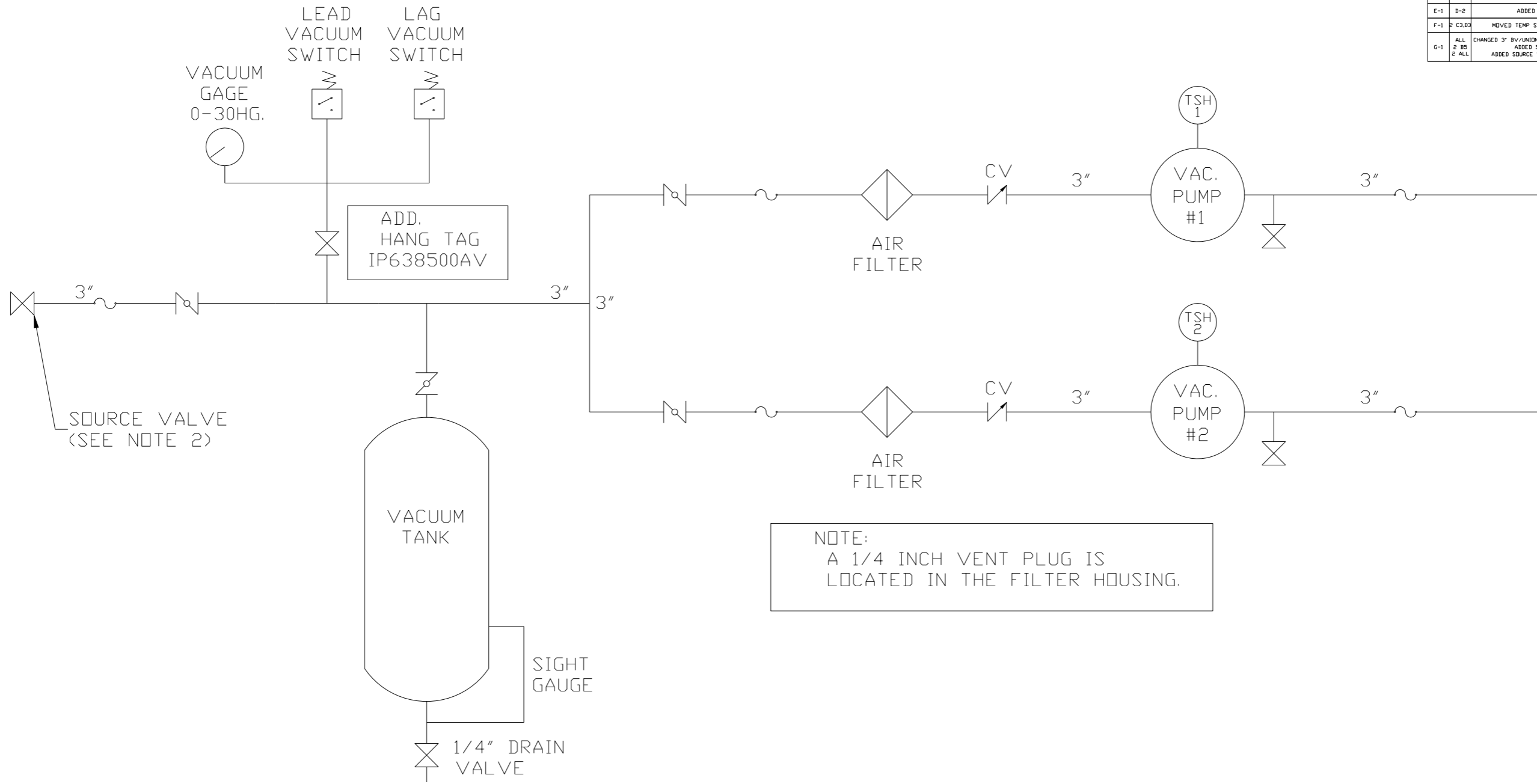
B

B

A

A

REV	ZONE	REVISION	DATE	ECN	NAME	CHKD
B-1	ALL	RELEASE TO PRODUCTION	4/25/08	21881	AEK	GES
C-1	2 ALL	REMOVED LOW OIL LIGHT OPTION	7/22/08	21906	AEK	GES
D-1	1 ALL	REMOVED VACUUM SWITCHES FROM PANEL	10/9/09	22127	AEK	GES
E-1	D-2	ADDED DRIP LEGS	03/03/11	22546	DMS	GES
F-1	2 C3,D3	MOVED TEMP SWITCHES TO PUMPS	7/3/12	22772	AEK	DMS
G-1	ALL 2 BS 2 ALL	CHANGED 3" BV/UNIONS TO BUTTERFLY VALVES ADDED SIGHT GAUGE ADDED SOURCE VALVE INFORMATION	5/1/14	PXEC0067	AEK	GES



NOTE:  
A 1/4 INCH VENT PLUG IS  
LOCATED IN THE FILTER HOUSING.

LEGEND	
	TEMP. SWITCH
	VACUUM SWITCH
	AIR FILTER
	BALL VALVE
	BUTTERFLY VALVE
	CHECK VALVE
	FLEX LINE
	UNION

NOTES:  
1) TSH - TEMPERATURE SWITCH HIGH  
2) PER NFPA THE SYSTEM WILL REQUIRE A SOURCE VALVE (SUPPLIED BY OTHERS).

SYMBOL LEGEND ⊖ = MINUS DRAFT ⊕ = PLUS DRAFT		⊕ = ADDITIONAL CONTROL REQ'D ⊕ = BRINELL HARDNESS		Drawings to conform to the current revision of the following ANSI standards: Y14.3 Multi and sectional view dgs. Y14.5M Dimensioning and tolerancing
TOLERANCES NOT SPECIFIED .XX ± .XXX ± <math>\angle</math> (DEG) ±		AUTOCAD REL2008 LT INCH		DO NOT SCALE DRAWING FOR DIMENSIONS Sheet 2 of 2 SCALE 1:16
CONFIDENTIAL DISCLOSURE This drawing is the property of the CAMPBELL GROUP OF THE SCOTT FETZER COMPANY and subject to return on demand. Its contents are confidential and must not be copied or submitted to outside parties for use or examination.		DRAWN BY AEK	CHECKED BY GES	APPROVED BY ENGINEERING MFG/MRKTG DMS RJR
MATERIAL N/A		DATE 4/25/08	DATE 4/25/08	DATE 4/25/08
PART NAME DUPLEX VACUUM PACKAGE FLOW SCHEMATIC		 150 PRODUCTION DRIVE, HARRISON, OHIO 45030 Ph: 888-769-7979 FAX: (513) 367-3125		DWG NO VPD2005 SIZE D