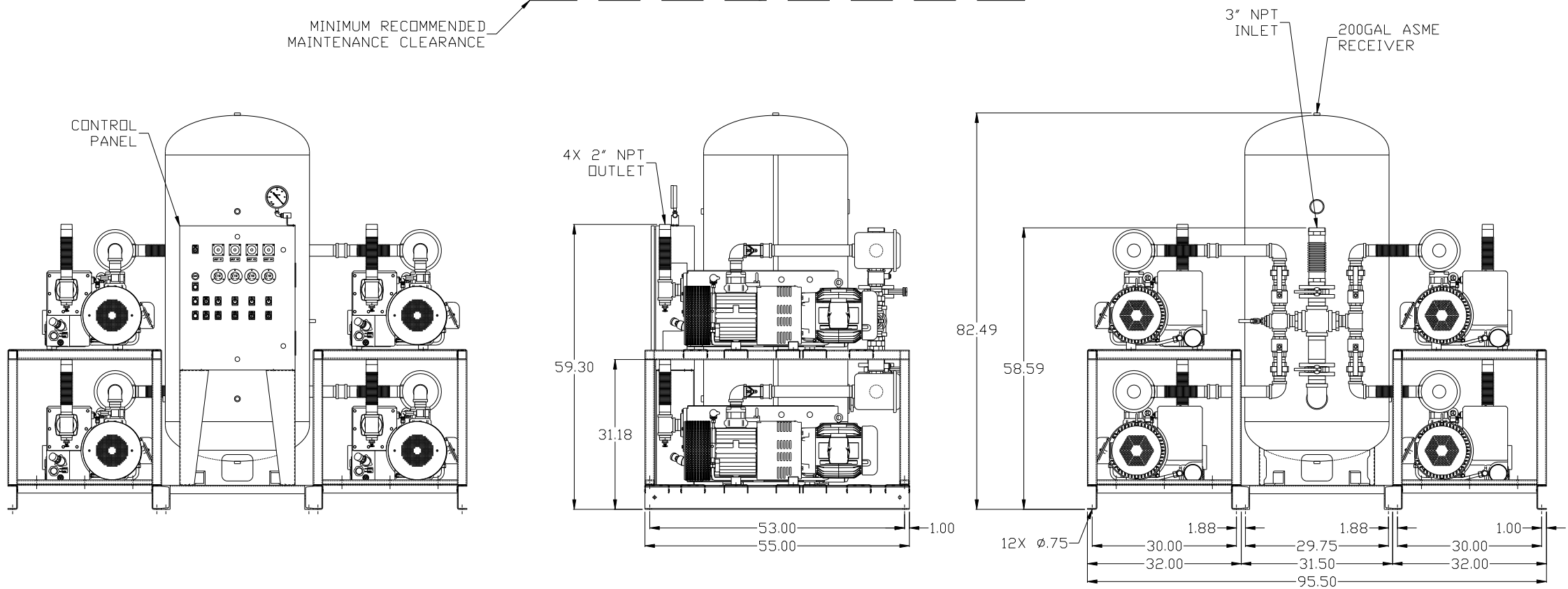
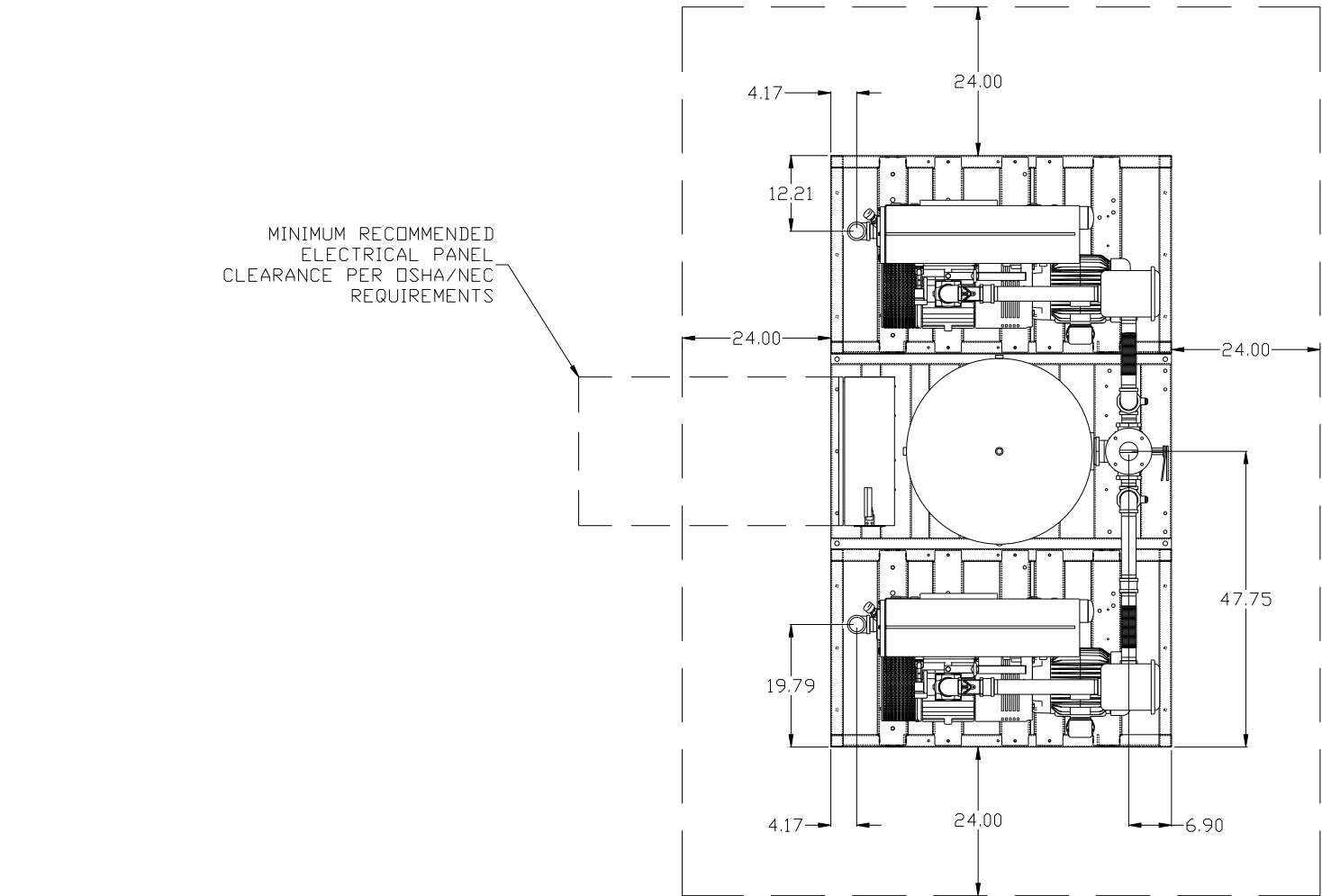


REV	ZONE	REVISION	DATE	ECN	NAME	CHKD
B-1	ALL	RELEASE TO PRODUCTION	4/21/08	21881	AEK	GES
C-1	2 ALL	REMOVED LOW OIL LEVEL SWITCH OPTION	8/18/08	21907	AEK	GES
C-2	3 ALL	ADDED SHEET 3	10/20/08	21907	AEK	GES
D-1	ALL	UPDATED TO CORRECT FRAMES	7/14/09	22127	AEK	GES
D-2	1 ALL	REMOVED VACUUM SWITCHES FROM CONTROL PANEL	10/23/09	22127	AEK	GES
E-1	2 B6 2 ALL ALL	ADDED SIGHT GAUGE ADDED SOURCE VALVE INFORMATION CHANGED 3" BV/JUNDS TO BUTTERFLY VALVES ADDED PBM/HMI SHEETS	10/25/12	22723	AEK	DMS
F-1	ALL	MADE HIGH TEMP STANDARD ON ALL CONTROLS	10/3/14	PXEC0048	AEK	GES
G-1	1,3 ALL	UPDATED TO RA SERIES PUMP	2/8/18	PXEC0148	AEK	GES



SYMBOL LEGEND		= ADDITIONAL CONTROL REQ'D		Drawings to conform to the current revision of the following ANSI standards:	
⊖ = MINUS DRAFT		= BRINELL HARDNESS		Y14.3 Multi and sectional view dsgs.	
⊕ = PLUS DRAFT				Y14.5M Dimensioning and tolerancing	
TOLERANCES NOT SPECIFIED		AUTOCAD REL2008 LT		DO NOT SCALE DRAWING FOR DIMENSIONS	
.XX ±		INCH		Sheet 1 of 3	
.XXX ±				SCALE 1: 14	
< < DEG > ±					
CONFIDENTIAL DISCLOSURE		This drawing is the property of POWEREX, INC. of the SCOTT FETZER COMPANY and subject to return on demand. Its contents are confidential and must not be copied or submitted to outside parties for use or examination.			
DRAWN BY		CHECKED BY		APPROVED BY	
AEK		GES		DMS RJR	
4/21/08		4/21/08		4/21/08 4/21/08	
MATERIAL		N/A			
PART NAME		10HP VACUUM			
200GAL. QUADPLEX					
DWG NO		VPQ1005		SIZE D	

REV	ZONE	REVISION	DATE	ECN	NAME	CHKD
B-1	ALL	RELEASE TO PRODUCTION	4/21/08	21881	AEK	GES
C-1	2 ALL	REMOVED LOW OIL LEVEL SWITCH OPTION	8/18/08	21907	AEK	GES
C-2	3 ALL	ADDED SHEET 3	10/20/08	21907	AEK	GES
D-1	ALL	UPDATED TO CORRECT FRAMES	7/14/09	22127	AEK	GES
D-2	1 ALL	REMOVED VACUUM SWITCHES FROM CONTROL PANEL	10/23/09	22127	AEK	GES
E-1	2 B6 2 ALL ALL	ADDED SIGHT GAUGE ADDED SOURCE VALVE INFORMATION CHANGED 3" BV/UNIONS TO BUTTERFLY VALVES ADDED PBM/HMI SHEETS	10/25/12	22723	AEK	DMS
F-1	ALL	MADE HIGH TEMP STANDARD ON ALL CONTROLS	10/3/14	PXEC0048	AEK	GES
G-1	1,3 ALL	UPDATED TO RA SERIES PUMP	2/8/18	PXEC0148	AEK	GES

D

D

C

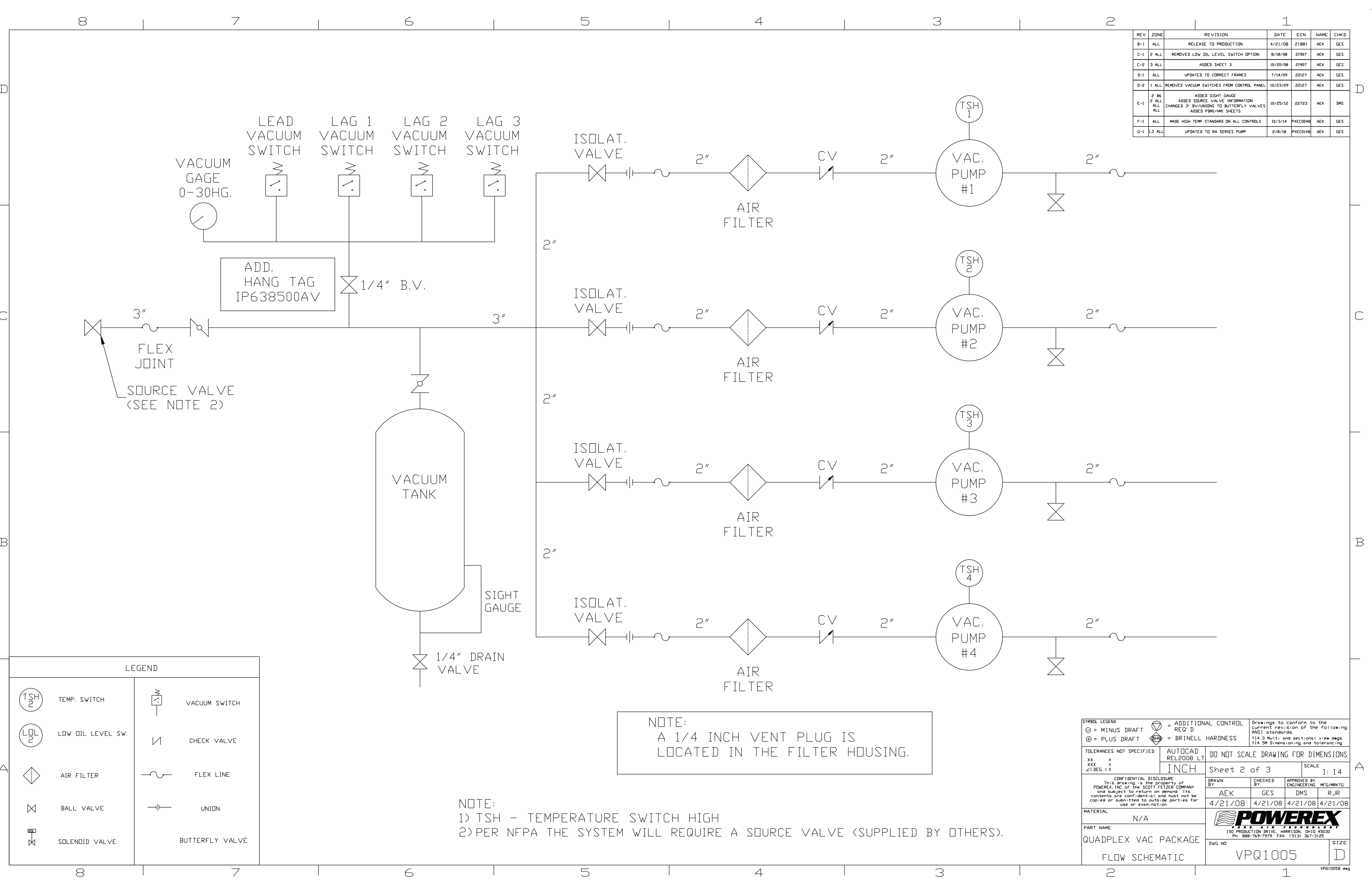
C

B

B

A




A



LEGEND			
	TEMP. SWITCH		VACUUM SWITCH
	LOW OIL LEVEL SW.		CHECK VALVE
	AIR FILTER		FLEX LINE
	BALL VALVE		UNION
	SOLENOID VALVE		BUTTERFLY VALVE

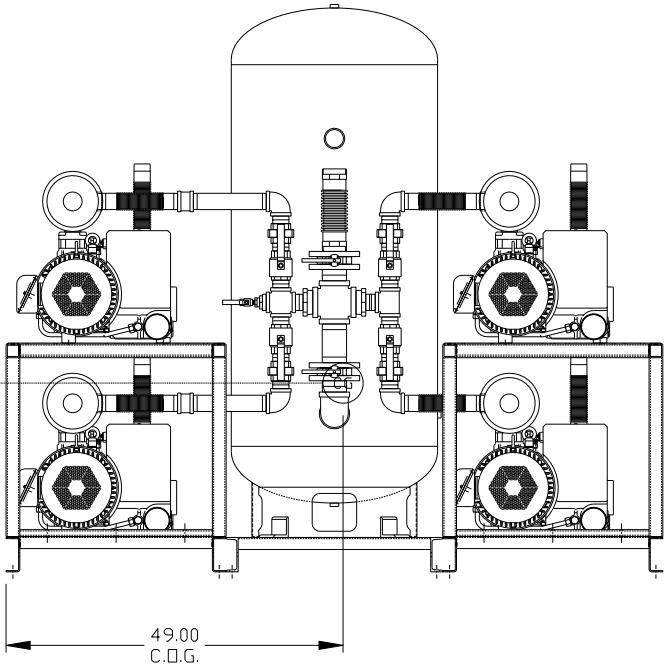
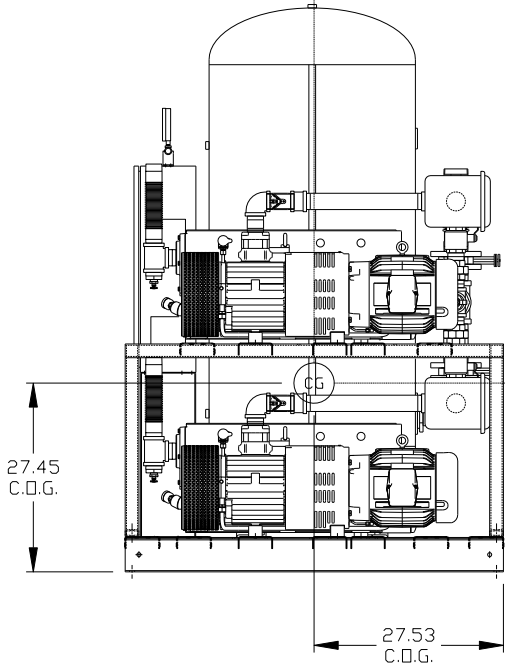
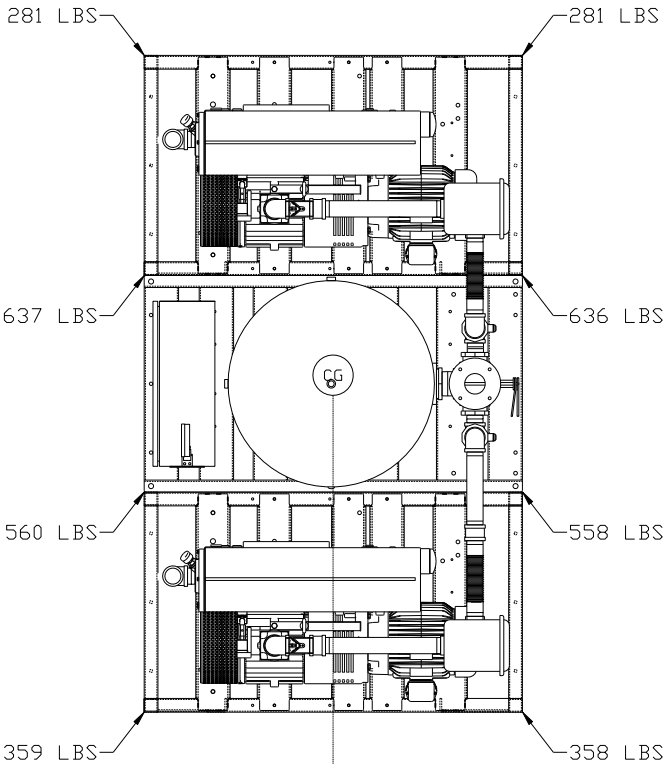
NOTE:  
A 1/4 INCH VENT PLUG IS  
LOCATED IN THE FILTER HOUSING.

NOTE:  
1) TSH - TEMPERATURE SWITCH HIGH  
2) PER NFPA THE SYSTEM WILL REQUIRE A SOURCE VALVE (SUPPLIED BY OTHERS).

SYMBOL LEGEND			= ADDITIONAL CONTROL REQ'D		Drawings to conform to the current revision of the following ANSI standards: Y14.3 Multi and sectional view dsgs. Y14.5M Dimensioning and tolerancing	
⊖ = MINUS DRAFT			= BRINELL HARDNESS			
⊕ = PLUS DRAFT						
TOLERANCES NOT SPECIFIED		AUTOCAD REL2008 LT		DO NOT SCALE DRAWING FOR DIMENSIONS		
.XX ± .XXX ± Z<DEG> ±		INCH				
		Sheet 2 of 3			SCALE 1: 14	
CONFIDENTIAL DISCLOSURE						
This drawing is the property of POWEREX, INC. of the SCOTT FELTZER COMPANY and subject to return on demand. Its contents are confidential and must not be copied or submitted to outside parties for use or examination.						
DRAWN BY		CHECKED BY		APPROVED BY ENGINEERING		MFG/MRKTG
AEK		GES		DMS		RJR
4/21/08		4/21/08		4/21/08		4/21/08
MATERIAL		N/A				
PART NAME		QUADPLEX VAC PACKAGE				
FLOW SCHEMATIC		VPQ1005				
DWG NO		SIZE				
		D				

VPQ1005B.dwg

REV	ZONE	REVISION	DATE	ECN	NAME	CHKD
C-2	3 ALL	ADDED SHEET 3	10/20/08	21907	AEK	GES
D-1	ALL	UPDATED TO CORRECT FRAMES	7/14/09	22127	AEK	GES
D-2	1 ALL	REMOVED VACUUM SWITCHES FROM CONTROL PANEL	10/23/09	22127	AEK	GES
E-1	2 B6 2 ALL 2 ALL ALL	ADDED SIGHT GAUGE ADDED SOURCE VALVE INFORMATION CHANGED 3" BV/UNIONS TO BUTTERFLY VALVES ADDED PBM/HMI SHEETS	10/25/12	22723	AEK	DMS
F-1	ALL	MADE HIGH TEMP STANDARD ON ALL CONTROLS	10/3/14	PXEC0048	AEK	GES
G-1	1,3 ALL	UPDATED TO RA SERIES PUMP	2/8/18	PXEC0148	AEK	GES



SYSTEM WT = 3670 LBS

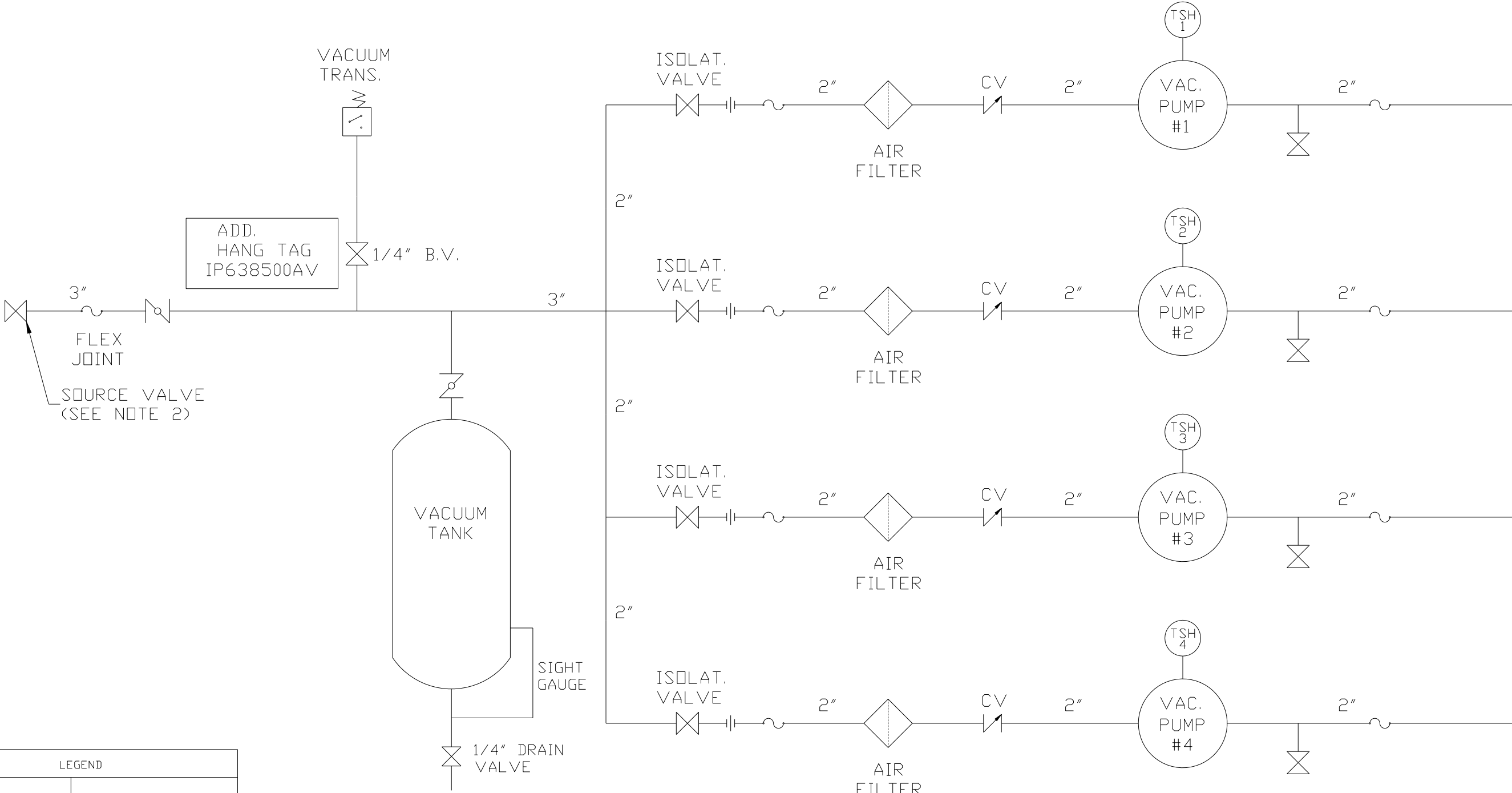
CENTER OF GRAVITY

X = 49.00  
Y = -27.53  
Z = 27.45

SYMBOL LEGEND ⊖ = MINUS DRAFT ⊕ = PLUS DRAFT		= ADDITIONAL CONTROL REQ'D = BRINELL HARDNESS		Drawings to conform to the current revision of the following ANSI standards: Y14.3 Multi and sectional view dgs. Y14.5M Dimensioning and tolerancing	
TOLERANCES NOT SPECIFIED .XX ± .XXX ± Z<DEG> ±		AUTOCAD REL2008 LT INCH		DO NOT SCALE DRAWING FOR DIMENSIONS Sheet 3 of 3 SCALE 1: 14	
CONFIDENTIAL DISCLOSURE This drawing is the property of POWEREX, INC. of the SCOTT FELTZER COMPANY and subject to return on demand. Its contents are confidential and must not be copied or submitted to outside parties for use or examination.		DRAWN BY AEK		CHECKED BY GES	APPROVED BY ENGINEERING DMS RJR
MATERIAL N/A		10/20/08		10/20/08	10/20/08
PART NAME CENTER OF GRAVITY		150 PRODUCTION DRIVE, HARRISON, OHIO 45030 Ph: 888-769-7979 FAX: (513) 367-3125		SIZE VPQ1005	



REV	ZONE	REVISION	DATE	ECN	NAME	CHKD
E-1	2 B6 2 ALL ALL	ADDED SIGHT GAUGE ADDED SOURCE VALVE INFORMATION CHANGED 3" BV/UNIONS TO BUTTERFLY VALVES ADDED PBM/HMI SHEETS	10/25/12	22723	AEK	DMS
F-1	ALL	MADE HIGH TEMP STANDARD ON ALL CONTROLS	10/3/14	PXEC0048	AEK	GES
G-1	1 ALL	UPDATED TO RA SERIES PUMP	2/8/18	PXEC0148	AEK	GES



ADD.  
HANG TAG  
IP638500AV

NOTE:  
A 1/4 INCH VENT PLUG IS  
LOCATED IN THE FILTER HOUSING.

NOTE:  
1) TSH - TEMPERATURE SWITCH HIGH  
2) PER NFPA THE SYSTEM WILL REQUIRE A SOURCE VALVE (SUPPLIED BY OTHERS).

LEGEND			
	TEMP. SWITCH		VACUUM SWITCH
	LOW OIL LEVEL SW.		CHECK VALVE
	AIR FILTER		FLEX LINE
	BALL VALVE		UNION
	SOLENOID VALVE		BUTTERFLY VALVE

SYMBOL LEGEND		= MINUS DRAFT = PLUS DRAFT		= ADDITIONAL CONTROL REQ'D = BRINELL HARDNESS		Drawings to conform to the current revision of the following ANSI standards: Y14.3 Multi and sectional view dgs. Y14.5M Dimensioning and tolerancing	
TOLERANCES NOT SPECIFIED		AUTOCAD REL2008 LT		DO NOT SCALE DRAWING FOR DIMENSIONS		Sheet 2 of 2	
.XX ± .XXX ± Z<DEG> ±		INCH		SCALE		1: 14	
CONFIDENTIAL DISCLOSURE This drawing is the property of POWEREX, INC. or the SCOTT FELTZER COMPANY and subject to return on demand. Its contents are confidential and must not be copied or submitted to outside parties for use or examination.		DRAWN BY AEK		CHECKED BY DMS		APPROVED BY AEK RJR	
MATERIAL N/A		10/25/12		10/25/12		10/25/12	
PART NAME QUADPLEX VAC PACKAGE		DWG NO		VPQ1005		SIZE D	
FLOW SCHEMATIC							