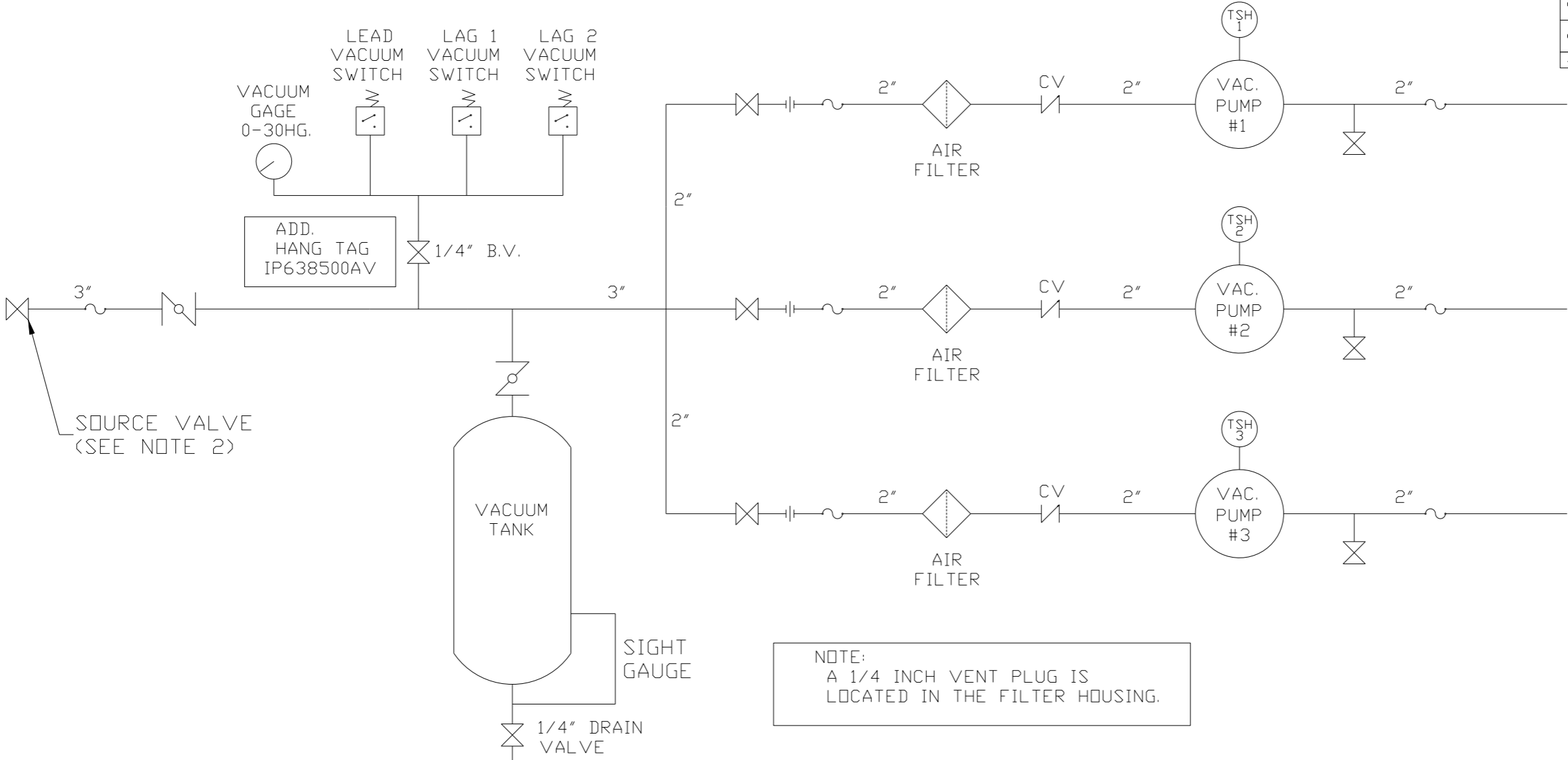





REV	ZONE	REVISION	DATE	ECN	NAME	CHKD
B-1	ALL	RELEASE TO PRODUCTION	2/29/08	21881	AEK	GES
B-2	1 ALL	MOVED PRESSURE GAUGE TO PANEL	3/19/08	21881	AEK	GES
B-3	ALL	SWITCHED TO SHORT TABLETOP, ADDED PIPE SIZES TO FLOW	3/26/08	21881	AEK	GES
B-4	1 ALL	MOVED ALL PUMPS TO RIGHT SIDE OF PANEL	4/23/08	21881	AEK	GES
C-1	2 ALL	REMOVED LOW OIL LIGHT OPTION	8/11/08	21907	AEK	GES
D-1	1 ALL	REMOVED VACUUM SWITCHES FROM CONTROL PANEL	10/15/09	22127	AEK	GES
E-1	2 B3-B5	ADDED DRIP LEGS	10/20/11	22390	AEK	DMS
F-1	ALL	CHANGED 3" BALL VALVES TO BUTTERFLY VALVES	8/17/12	PKEC0006	AEK	DMS
G-1	ALL 2 B5 2 ALL	ADDED PBM/HMI SHEETS ADDED SIGHT GAUGE ADDED SOURCE VALVE INFORMATION	11/5/12	22723	AEK	DMS
H-1	1 B3 1 B6 1 ALL	ADDED INLET SIZE CALL OUT CORRECTED OUTLET CALL OUT CORRECTED INLET MANIFOLD SIZE	8/29/13	PKEC0030	AEK	GES
J-1	1 ALL	UPDATED TO RA SERIES PUMP	10/25/16	PKEC0148	AEK	GES



LEGEND	
TSH 2	TEMP. SWITCH
LOL 2	LOW OIL LEVEL SW.
	AIR FILTER
	BALL VALVE
	VACUUM SWITCH
	CHECK VALVE
	FLEX LINE
	UNION
	BUTTERFLY VALVE

NOTES:
1) TSH - TEMPERATURE SWITCH HIGH
2) PER NFPA THE SYSTEM WILL REQUIRE A SOURCE VALVE (SUPPLIED BY OTHERS).

SYMBOL LEGEND ⊖ = MINUS DRAFT ⊕ = PLUS DRAFT		 = ADDITIONAL CONTROL REQ'D  = BRINELL HARDNESS	Drawings to conform to the current revision of the following ANSI standards: Y14.3 Multi and sectional view dgs. Y14.5M Dimensioning and tolerancing		
TOLERANCES NOT SPECIFIED .XX ± .XXX ± ∠<DEG. > ±		AUTOCAD REL2008 LT INCH	DO NOT SCALE DRAWING FOR DIMENSIONS		
		Sheet 2 of 2		SCALE 1: 14	
CONFIDENTIAL DISCLOSURE This drawing is the property of POWEREX, INC. of the SCOTT FETZER COMPANY and subject to return on demand. Its contents are confidential and must not be copied or submitted to outside parties for use or examination.		DRAWN BY	CHECKED BY	APPROVED BY ENGINEERING	MFG/MRKTG
		AEK	GES	DMS	RJR
		2/29/08	2/29/08	2/29/08	2/29/08
MATERIAL N/A		 150 PRODUCTION DRIVE, HARRISON, OHIO 45030 Ph: 888-769-7979 FAX: (513) 367-3125			
PART NAME TRIPLEX VAC PACKAGE FLOW SCHEMATIC		DWG NO VPT0754		SIZE D	

REV	ZONE	REVISION	DATE	ECN	NAME	CHKD
G-1	ALL	ADDED PBM/HMI SHEETS				
	2 95	ADDED SIGHT GAUGE	11/5/12	22723	AEK	DMS
	2 ALL	ADDED SOURCE VALVE INFORMATION				
H-1	1 B3	ADDED INLET SIZE CALL OUT				
	1 B6	CORRECTED OUTLET CALL OUT	8/29/13	PXEC0030	AEK	GES
	1 ALL	CORRECTED INLET MANIFOLD SIZE				
J-1	1 ALL	UPDATED TO RA SERIES PUMP	10/25/16	PXEC0148	AEK	GES

MINIMUM RECOMMENDED
ELECTRICAL PANEL
CLEARANCE PER OSHA/NEC
REQUIREMENTS

MINIMUM RECOMMENDED
MAINTENANCE CLEARANCE

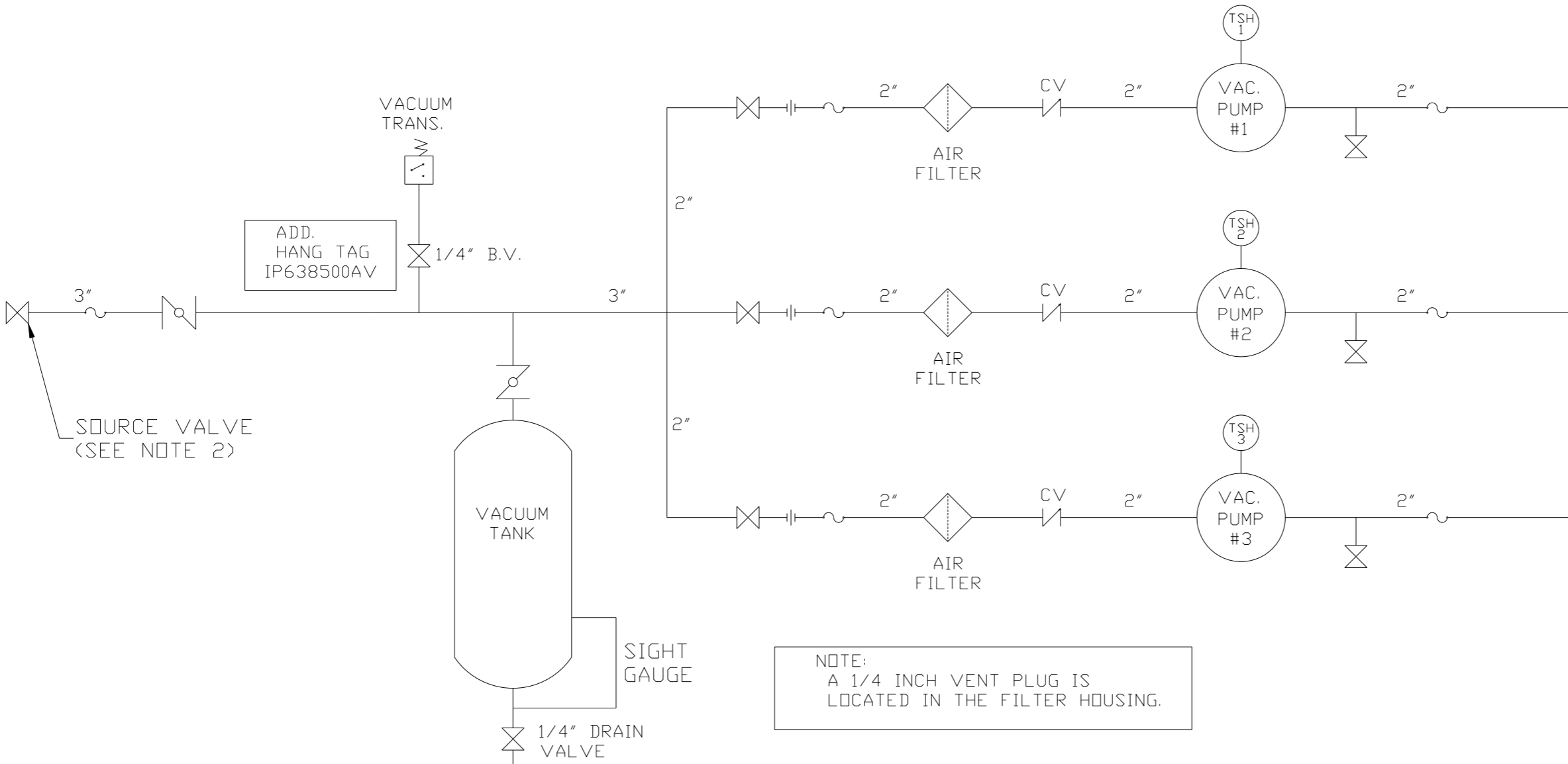
3X 2" MNPT
OUTLET

3" MNPT
INLET

SYMBOL LEGEND		= ADDITIONAL CONTROL REQ'D		Drawings to conform to the current revision of the following ANSI standards:	
⊖ = MINUS DRAFT		= BRINELL HARDNESS		Y14.3 Multi and sectional view deqs.	
⊕ = PLUS DRAFT				Y14.5M Dimensioning and tolerancing	
TOLERANCES NOT SPECIFIED		AUTOCAD REL2008 LT		DO NOT SCALE DRAWING FOR DIMENSIONS	
.XX ±		INCH		Sheet 1 of 2	
.XXX ±				SCALE 1: 14	
Z<DEG> ±					
CONFIDENTIAL DISCLOSURE		DRAWN BY		CHECKED BY	
This drawing is the property of POWEREX, INC. of the SCOTT FETZER COMPANY and subject to return on demand. Its contents are confidential and must not be copied or submitted to outside parties for use or examination.		AEK		DMS	
		11/5/12		11/5/12	
MATERIAL		N/A		APPROVED BY	
				DMS	
				11/5/12	
PART NAME		7.5HP VACUUM		11/5/12	
		120GAL TRIPLEX		11/5/12	
				SIZE	
				D	
				DWG NO	
				VPT0754	

VPT0754B.dwg




REV	ZONE	REVISION	DATE	ECN	NAME	CHKD
G-1	ALL	ADDED PBM/HMI SHEETS				
	2 95	ADDED SIGHT GAUGE				
	2 ALL	ADDED SOURCE VALVE INFORMATION	11/5/12	22723	AEK	DMS
H-1	1 B3	ADDED INLET SIZE CALL OUT				
	1 B6	CORRECTED OUTLET CALL OUT	8/29/13	PXEC0030	AEK	GES
	1 ALL	CORRECTED INLET MANIFOLD SIZE				
J-1	1 ALL	UPDATED TO RA SERIES PUMP	10/25/16	PXEC0148	AEK	GES



NOTE:
A 1/4 INCH VENT PLUG IS
LOCATED IN THE FILTER HOUSING.

LEGEND	
TSH 2	TEMP. SWITCH
LOL 2	LOW OIL LEVEL SW.
	AIR FILTER
	BALL VALVE
	VACUUM SWITCH
	CHECK VALVE
	FLEX LINE
	UNION
	BUTTERFLY VALVE

NOTES:
1) TSH - TEMPERATURE SWITCH HIGH
2) PER NFPA THE SYSTEM WILL REQUIRE A SOURCE VALVE (SUPPLIED BY OTHERS).

SYMBOL LEGEND		 = ADDITIONAL CONTROL REQ'D	Drawings to conform to the current revision of the following ANSI standards:	
⊖ = MINUS DRAFT		 = BRINELL HARDNESS	Y14.3 Multi and sectional view dgs.	
⊕ = PLUS DRAFT			Y14.5M Dimensioning and tolerancing	
TOLERANCES NOT SPECIFIED		AUTOCAD REL2008 LT	DO NOT SCALE DRAWING FOR DIMENSIONS	
.XX ±		INCH	SCALE	
.XXX ±			1: 14	
∠<DEG> ±				
CONFIDENTIAL DISCLOSURE		DRAWN BY	CHECKED BY	APPROVED BY
This drawing is the property of POWEREX, INC. of the SCOTT FETZER COMPANY and subject to return on demand. Its contents are confidential and must not be copied or submitted to outside parties for use or examination.		AEK	DMS	AEK RJR
		11/5/12	11/5/12	11/5/12 11/5/12
MATERIAL				
N/A		150 PRODUCTION DRIVE, HARRISON, OHIO 45030 Ph: 888-769-7979 FAX: (513) 367-3125		
PART NAME				
TRIPLEX VAC PACKAGE				
FLOW SCHEMATIC		DWG NO		SIZE
		VPT0754		D