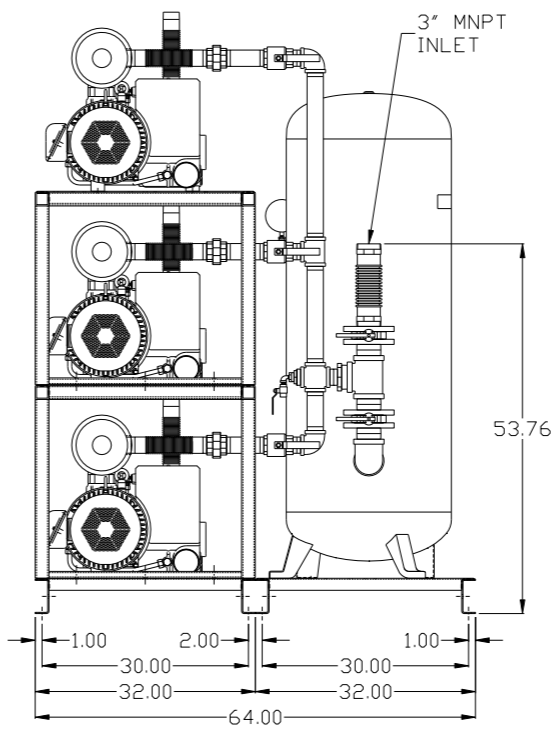
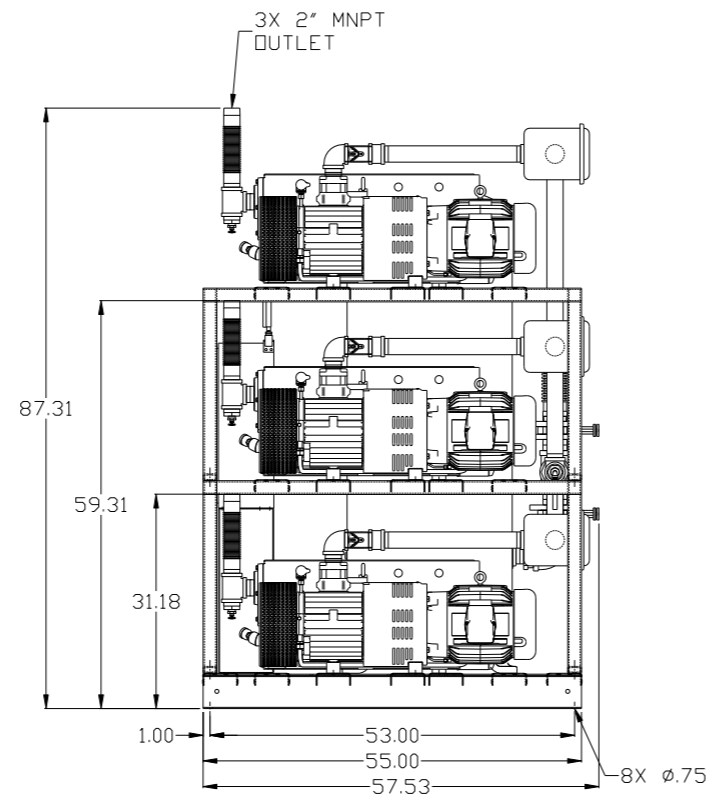
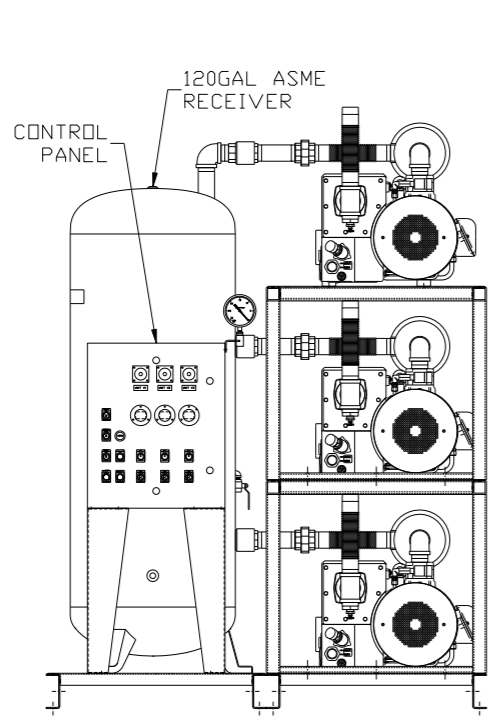
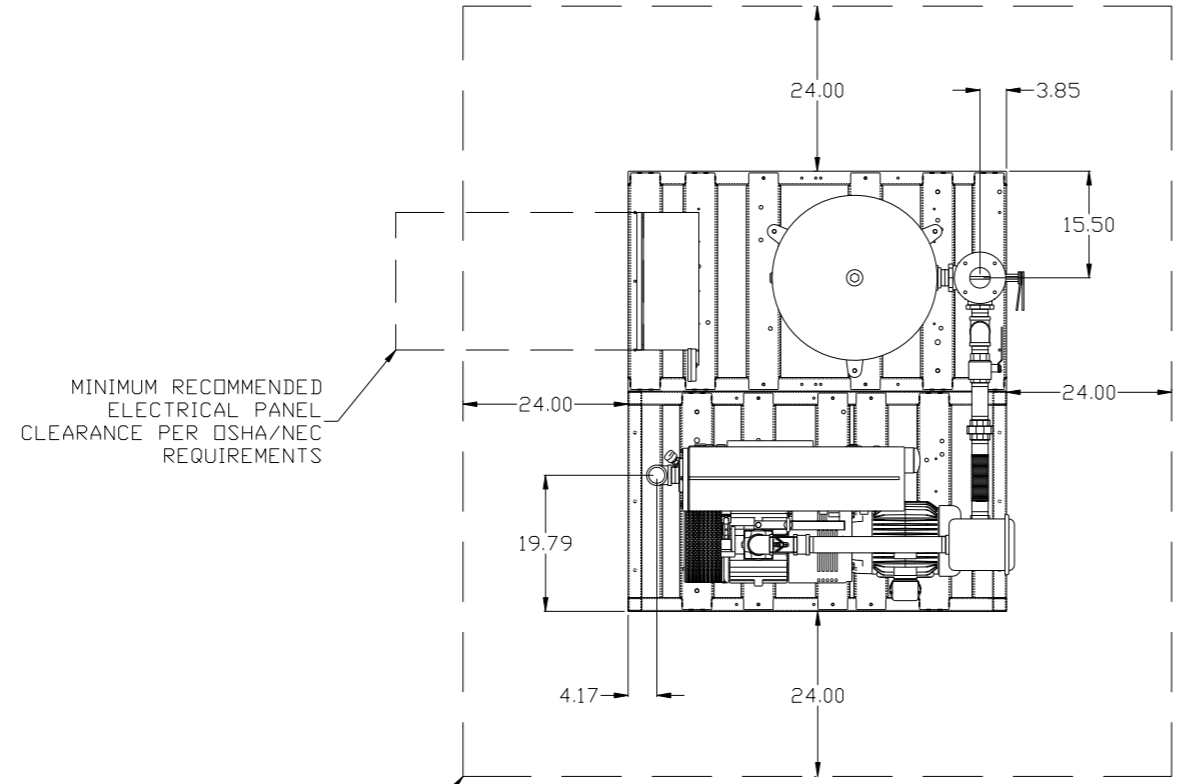


8 7 6 5 4 3 2 1

REV	ZONE	REVISION	DATE	ECN	NAME	CHKD
B-1	ALL	RELEASE TO PRODUCTION	2/29/08	21881	AEK	GES
B-2	1 ALL	MOVED PRESSURE GAUGE TO PANEL	3/19/08	21881	AEK	GES
B-3	ALL	SWITCHES TO SHORT TABLETOP; ADDED ADDITIONAL LAYOUT	3/26/08	21881	AEK	GES
B-4	ALL	MOVED ALL PUMPS TO THE RIGHT SIDE OF THE PANEL	4/23/08	21881	AEK	GES
C-1	2 ALL	REMOVED LOW OIL LIGHT OPTION	8/12/08	21907	AEK	GES
D-1	1 ALL	REMOVED VACUUM SWITCHES FROM CONTROL PANEL	10/19/09	22127	AEK	GES
E-1	ALL	ADDED SHIP LEGS	01/23/11	22546	DMS	GES
F-1	2 ALL	MOVED TEMP SWITCH TO PUMP	4/24/12	22772	AEK	DMS
G-1	ALL	CHANGED 3" BY-PASS/IN TO BUTTERFLY VALVES	8/8/12	PXEC0006	AEK	DMS
H-1	2 ALL 2 30 ALL	ADDED SOURCE VALVE INFORMATION ADDED SIGHT GAUGE MADE HIGH TEMP STANDARD ON BASIC CONTROLS	5/13/14	PXEC0067	AEK	GES
J-1	ALL	ADDED PPM SHEETS	4/16/15	PXEC0093	AEK	GES
K-1	1 ALL	UPDATED TO NEW RA SERIES PUMP	8/11/16	PXEC0148	AEK	GES
L-1	1 ALL	ADDED DSP BUILD LAYOUT	8/24/16	PXEC0139	AEK	GES

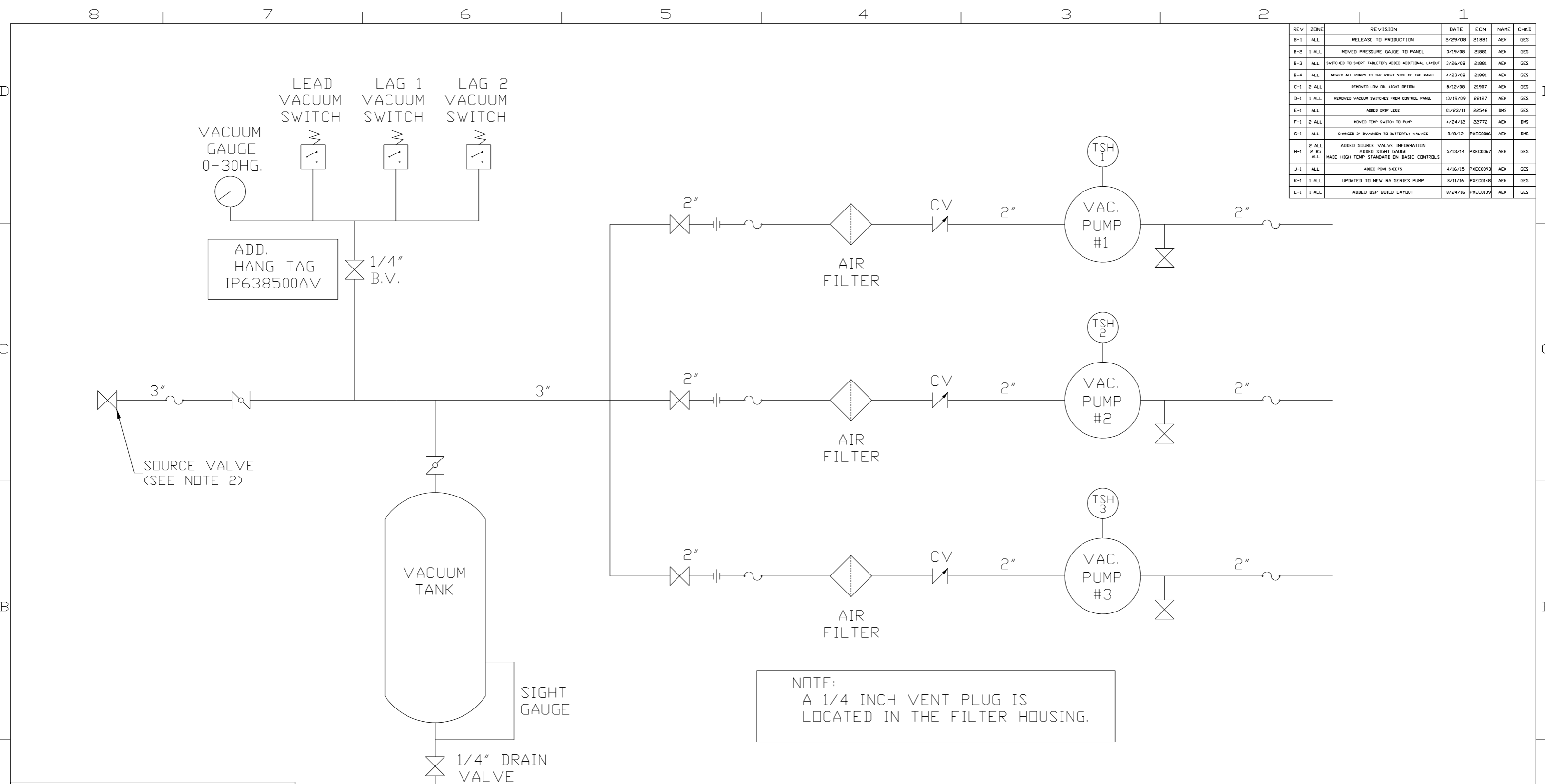


NOTE: SYSTEM DESIGNED IN COMPLIANCE WITH U.S. NFPA '99, LATEST EDITION.

<b>SYMBOL LEGEND</b> ⊖ = MINUS DRAFT ⊕ = PLUS DRAFT HRC = BRINELL HARDNESS		= ADDITIONAL CONTROL REQ'D = BRINELL HARDNESS		Drawings to conform to the current revision of the following ANSI standards: Y14.3 Multi and sectional view dsgs. Y14.5M Dimensioning and tolerancing
TOLERANCES NOT SPECIFIED .XX ± .XXX ± <DEG> ±		AUTOCAD REL2008 LT INCH		DO NOT SCALE DRAWING FOR DIMENSIONS Sheet 1 of 2 SCALE 1:14
<b>CONFIDENTIAL DISCLOSURE</b> This drawing is the property of POWEREX, INC. of the SCOTT FELTZER COMPANY and subject to return on demand. Its contents are confidential and must not be copied or submitted to outside parties for use or examination.				
DRAWN BY AEK		CHECKED BY GES		APPROVED BY ENGINEERING MFG/MRKTG DMS RJR
MATERIAL N/A		2/29/08 2/29/08 2/29/08 2/29/08		POWEREX 150 PRODUCTION DRIVE, HARRISON, OHIO 45030 Ph 888-769-7979 FAX (513) 367-3125
PART NAME 10HP VACUUM 120GAL TRIPLEX			DWG NO VPT1004	
				SIZE D

8 7 6 5 4 3 2 1

REV	ZONE	REVISION	DATE	ECN	NAME	CHKD
B-1	ALL	RELEASE TO PRODUCTION	2/29/08	21881	AEK	GES
B-2	1 ALL	MOVED PRESSURE GAUGE TO PANEL	3/19/08	21881	AEK	GES
B-3	ALL	SWITCHES TO SHORT TABLETOP; ADDED ADDITIONAL LAYOUT	3/26/08	21881	AEK	GES
B-4	ALL	MOVED ALL PUMPS TO THE RIGHT SIDE OF THE PANEL	4/23/08	21881	AEK	GES
C-1	2 ALL	REMOVED LOW OIL LIGHT OPTION	8/12/08	21907	AEK	GES
D-1	1 ALL	REMOVED VACUUM SWITCHES FROM CONTROL PANEL	10/19/09	22127	AEK	GES
E-1	ALL	ADDED SHIP LEGS	01/23/11	22546	DMS	GES
F-1	2 ALL	MOVED TEMP SWITCH TO PUMP	4/24/12	22772	AEK	DMS
G-1	ALL	CHANGED 3" BV/RANDM TO BUTTERFLY VALVES	8/8/12	PXEC0006	AEK	DMS
H-1	2 ALL 2 30 ALL	ADDED SOURCE VALVE INFORMATION ADDED SIGHT GAUGE MADE HIGH TEMP STANDARD ON BASIC CONTROLS	5/13/14	PXEC0067	AEK	GES
J-1	ALL	ADDED PIMI SHEETS	4/16/15	PXEC0093	AEK	GES
K-1	1 ALL	UPDATED TO NEW RA SERIES PUMP	8/11/16	PXEC0148	AEK	GES
L-1	1 ALL	ADDED DSP BUILD LAYOUT	8/24/16	PXEC0139	AEK	GES



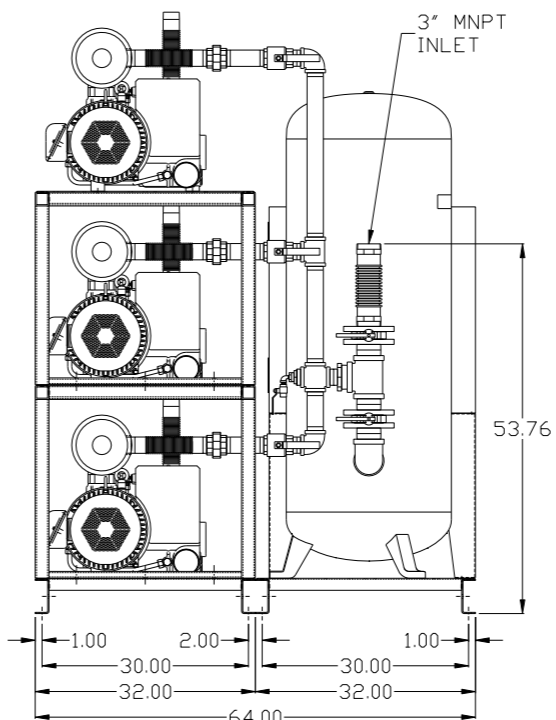
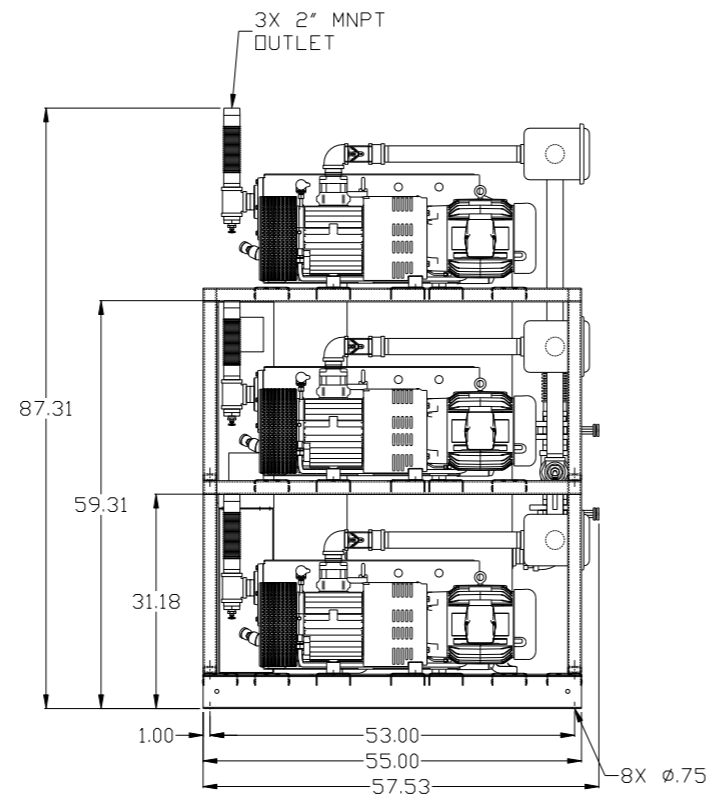
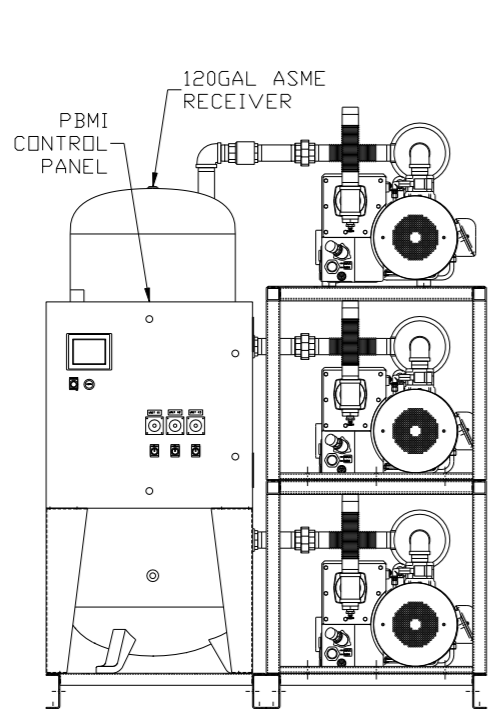
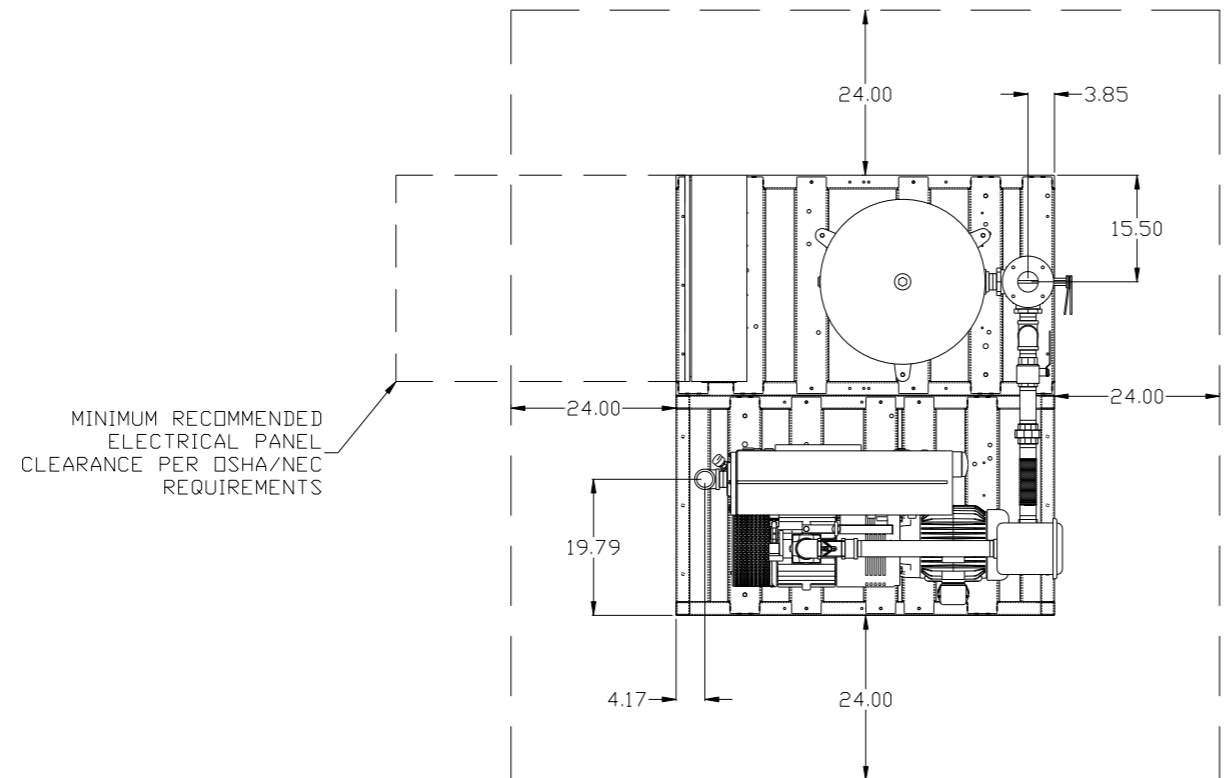
NOTE:  
A 1/4 INCH VENT PLUG IS  
LOCATED IN THE FILTER HOUSING.

LEGEND	
	TEMP. SWITCH
	VACUUM SWITCH
	AIR FILTER
	BALL VALVE
	BUTTERFLY VALVE
	CHECK VALVE
	FLEX LINE
	UNION

NOTES:  
1) TSH - TEMPERATURE SWITCH HIGH  
2) PER NFPA THE SYSTEM WILL REQUIRE A SOURCE VALVE (SUPPLIED BY OTHERS).

SYMBOL LEGEND			ADDITIONAL CONTROL REQ'D	Drawings to conform to the current revision of the following ANSI standards:
	MINUS DRAFT		BRINELL HARDNESS	Y14.3 Multi and sectional view dsgs. Y14.5M Dimensioning and tolerancing
TOLERANCES NOT SPECIFIED		DO NOT SCALE DRAWING FOR DIMENSIONS		
.XX ±	±	AUTOCAD REL2008 LT		SCALE 1:14
.XXX ±	±	INCH		Sheet 2 of 2
<<DEG> ±	±			
CONFIDENTIAL DISCLOSURE This drawing is the property of POWEREX, INC. OF THE SCOTT FETZER COMPANY and subject to return on demand. Its contents are confidential and must not be copied or submitted to outside parties for use or examination.				
DRAWN BY	CHECKED BY	APPROVED BY	ENGINEERING MFG/MRKTG	
AEK	GES	DMS	RJR	
2/29/08	2/29/08	2/29/08	2/29/08	
MATERIAL		N/A		
PART NAME		TRIPLEX VAC PACKAGE		
FLOW SCHEMATIC		VPT1004		
DWG NO		SIZE D		

REV	ZONE	REVISION	DATE	ECN	NAME	CHKD
J-1	ALL	ADDED PBMI SHEETS	4/16/15	PXEC0093	AEK	GES
K-1	I ALL	UPDATED TO NEW RA SERIES PUMP	8/11/16	PXEC0148	AEK	GES
L-1	I ALL	ADDED DSP BUILD LAYOUT	8/24/16	PXEC0139	AEK	GES

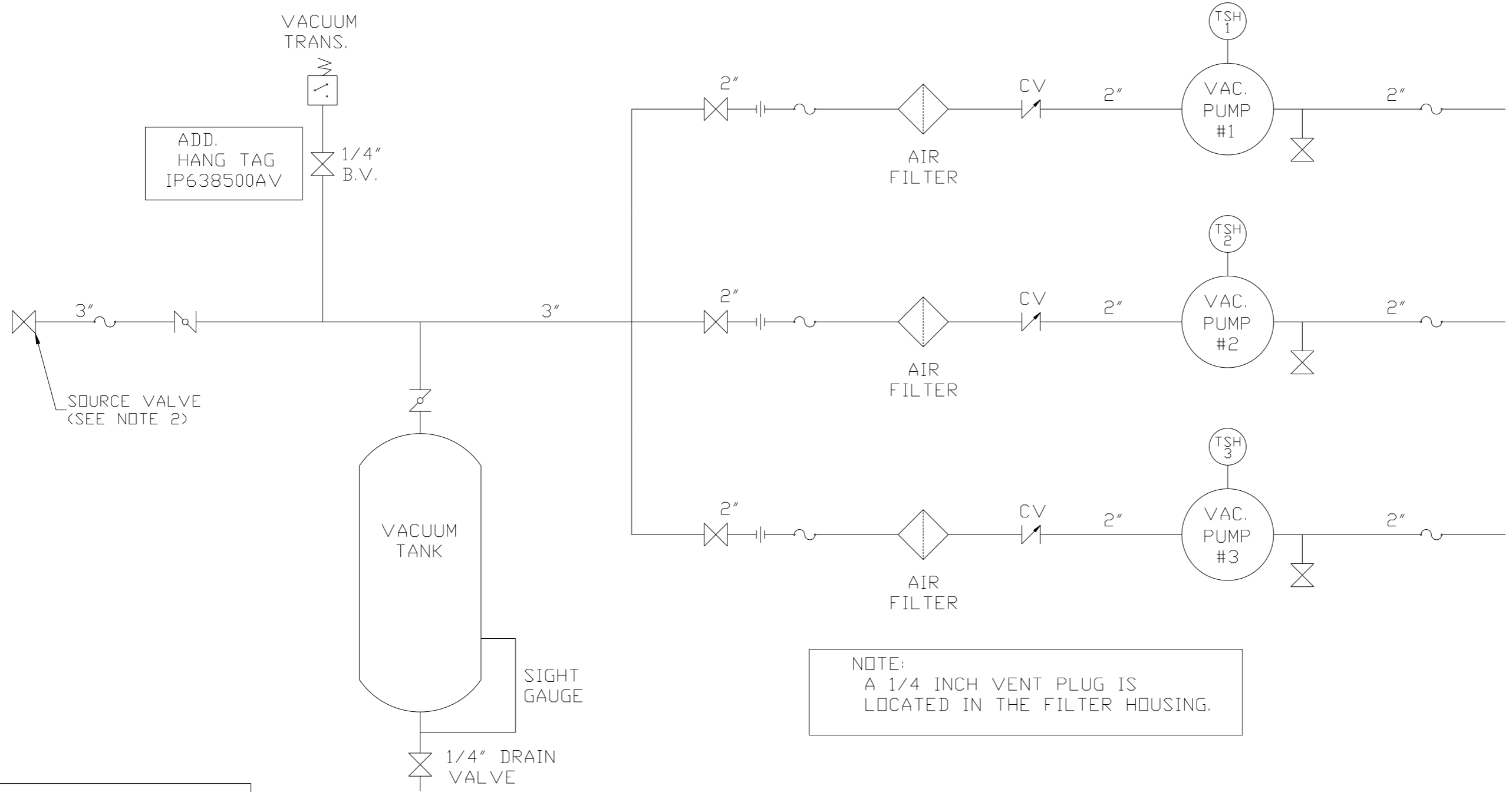


NOTE: SYSTEM DESIGNED IN COMPLIANCE WITH U.S. NFPA '99, LATEST EDITION.

SYMBOL LEGEND		= ADDITIONAL CONTROL REQ'D		Drawings to conform to the current revision of the following ANSI standards:	
$\ominus$	MINUS DRAFT	$\oplus$	PLUS DRAFT	Y14.3	Multi and sectional view dgs.
$\oplus$	PLUS DRAFT	$\text{HRC}$	BRINELL HARDNESS	Y14.5M	Dimensioning and tolerancing
TOLERANCES NOT SPECIFIED		AUTOCAD REL2014 LT		DO NOT SCALE DRAWING FOR DIMENSIONS	
.XX	$\pm$	INCH		Sheet 1 of 2	SCALE 1:14
.XXX	$\pm$	CONFIDENTIAL DISCLOSURE			
$\angle$ (DEG)	$\pm$	This drawing is the property of POWEREX, INC. of the SCOTT FEITZER COMPANY and subject to return on demand. Its contents are confidential and must not be copied or submitted to outside parties for use or examination.			
DRAWN BY		CHECKED BY	APPROVED BY	MFG/MKTG	
AEK		GES	GES	RJR	
4/16/15		4/16/15	4/16/15	4/16/15	
MATERIAL		N/A			
PART NAME		10HP VACUUM 120GAL TRIPLEX			
DWG NO		VPT1004		SIZE D	

REV	ZONE	REVISION	DATE	ECN	NAME	CHKD
J-1	ALL	ADDED PBM SHEETS	4/16/15	PXEC0093	AEK	GES
K-1	1 ALL	UPDATED TO NEW RA SERIES PUMP	8/11/16	PXEC0148	AEK	GES
L-1	1 ALL	ADDED DSP BUILD LAYOUT	8/24/16	PXEC0139	AEK	GES

8 7 6 5 4 3 2 1



ADD.  
HANG TAG  
IP638500AV

SOURCE VALVE  
(SEE NOTE 2)

VACUUM  
TANK

SIGHT  
GAUGE

1/4" DRAIN  
VALVE

NOTE:  
A 1/4 INCH VENT PLUG IS  
LOCATED IN THE FILTER HOUSING.

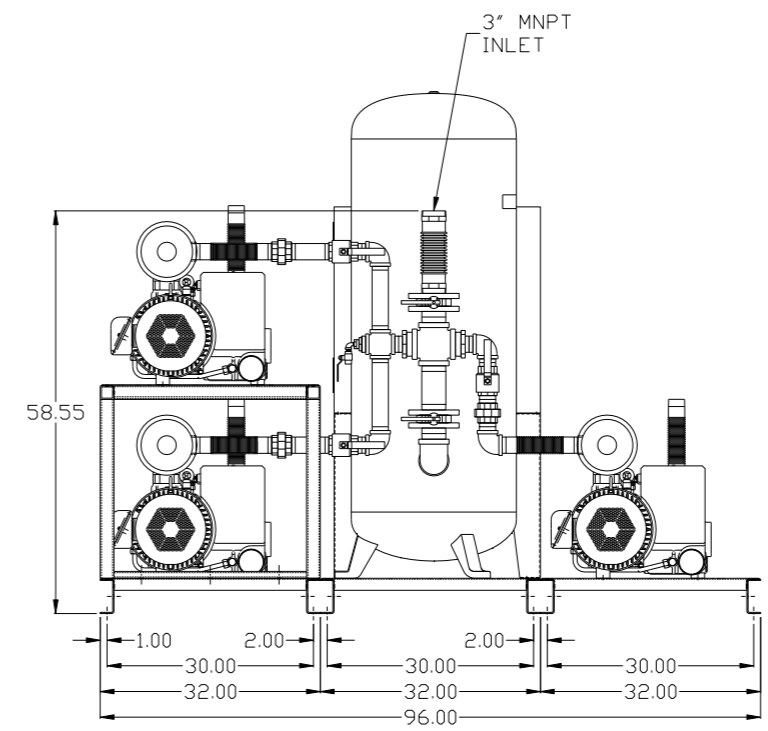
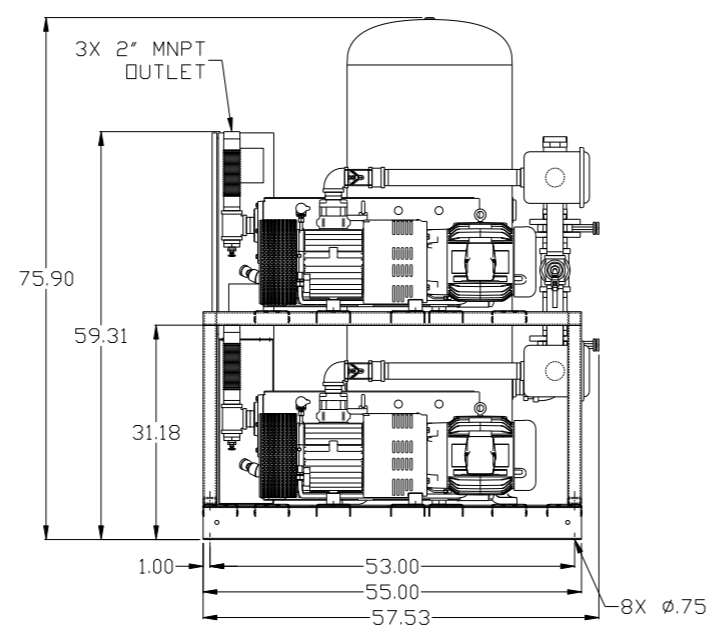
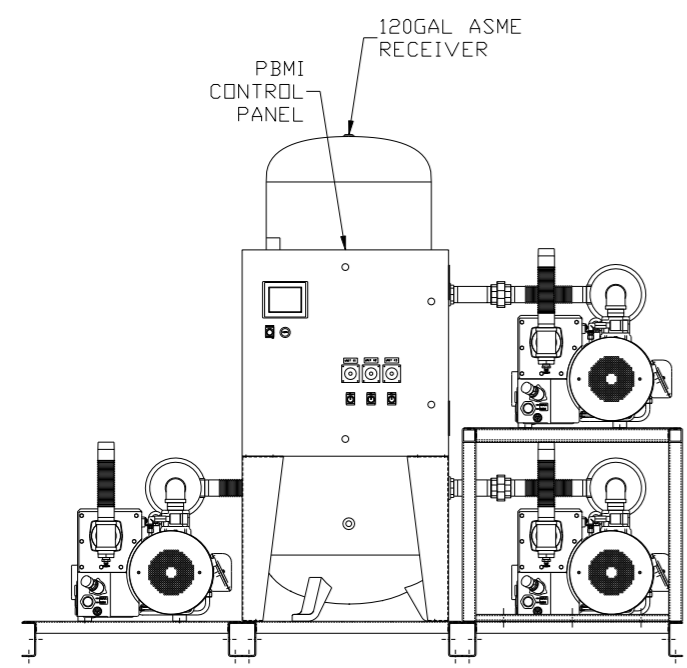
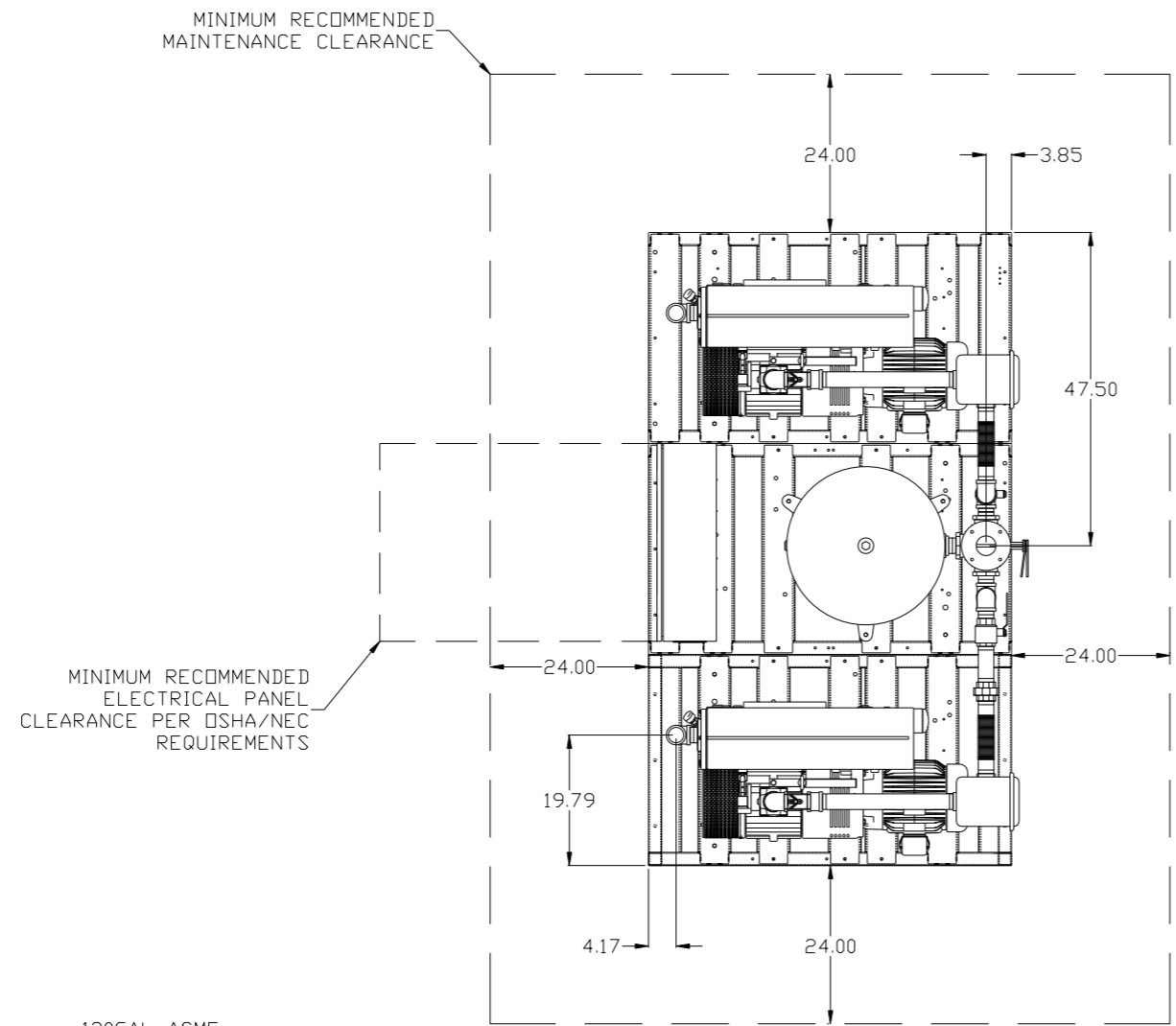
LEGEND	
	TEMP. SWITCH
	AIR FILTER
	BALL VALVE
	BUTTERFLY VALVE
	VACUUM SWITCH
	CHECK VALVE
	FLEX LINE
	UNION

NOTES:  
1) TSH - TEMPERATURE SWITCH HIGH  
2) PER NFPA THE SYSTEM WILL REQUIRE A SOURCE VALVE (SUPPLIED BY OTHERS).

SYMBOL LEGEND			ADDITIONAL CONTROL REQ'D	Drawings to conform to the current revision of the following ANSI standards: Y14.3 Multi and sectional view dgs. Y14.5M Dimensioning and tolerancing
	MINUS DRAFT		BRINELL HARDNESS	
TOLERANCES NOT SPECIFIED		AUTOCAD REL2014 LT	DO NOT SCALE DRAWING FOR DIMENSIONS	
.XX ±	.XXX ±	<<DEG> ±	INCH	SCALE 1:14
CONFIDENTIAL DISCLOSURE This drawing is the property of POWEREX, INC. or the SCOTT FETZER COMPANY and subject to return on demand. Its contents are confidential and must not be copied or submitted to outside parties for use or examination.		DRAWN BY	CHECKED BY	APPROVED BY
		AEK	GES	KMD RJR
		4/16/15	4/16/15	4/16/15 4/16/15
MATERIAL N/A				
PART NAME		150 PRODUCTION DRIVE, HARRISON, OHIO 45030 Ph: 888-769-7979 FAX: (513) 367-3125		
TRIPLEX VAC PACKAGE		DWG NO		SIZE
FLOW SCHEMATIC		VPT1004		D

8 7 6 5 4 3 2 1

REV	ZONE	REVISION	DATE	ECN	NAME	CHKD
L-1	1 ALL	ADDED DSP BUILD LAYOUT	8/24/16	PXEC0139	AEK	GES



NOTE: SYSTEM DESIGNED IN COMPLIANCE WITH U.S. NFPA '99, LATEST EDITION.

<b>SYMBOL LEGEND</b> ⊖ = MINUS DRAFT ⊕ = PLUS DRAFT ∅ = ADDITIONAL CONTROL REQ'D Ⓢ = BRINELL HARDNESS		Drawings to conform to the current revision of the following ANSI standards: Y14.3 Multi and sectional view dsgs. Y14.5M Dimensioning and tolerancing	
TOLERANCES NOT SPECIFIED .XX ± .XXX ± <DEG> ±		DO NOT SCALE DRAWING FOR DIMENSIONS Sheet 1 of 2 SCALE 1:14	
CONFIDENTIAL DISCLOSURE This drawing is the property of POWEREX, INC. of the SCOTT FEITZER COMPANY and subject to return on demand. Its contents are confidential and must not be copied or submitted to outside parties for use or examination.		AUTOCAD REL2014 LT INCH	
MATERIAL N/A		DRAWN BY: AEK CHECKED BY: GES APPROVED BY: ENGINEERING MFG/MKTG: GES, RJR 8/23/16 8/23/16 8/23/16 8/23/16	
PART NAME 10HP VACUUM 120GAL TRIPLEX		DWG NO: VPT1004 SIZE: D	

DSP LISTED LAYOUT