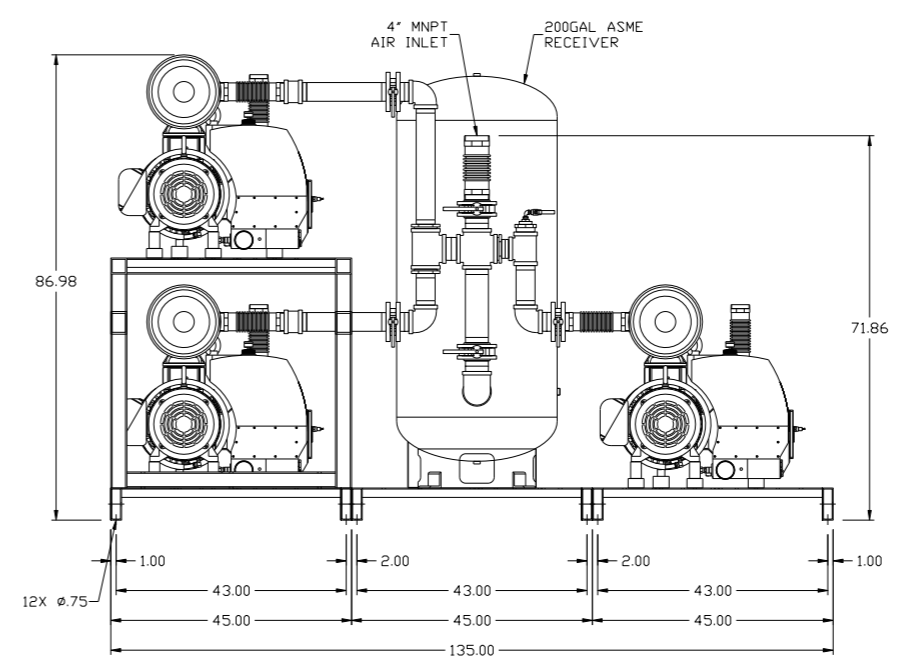
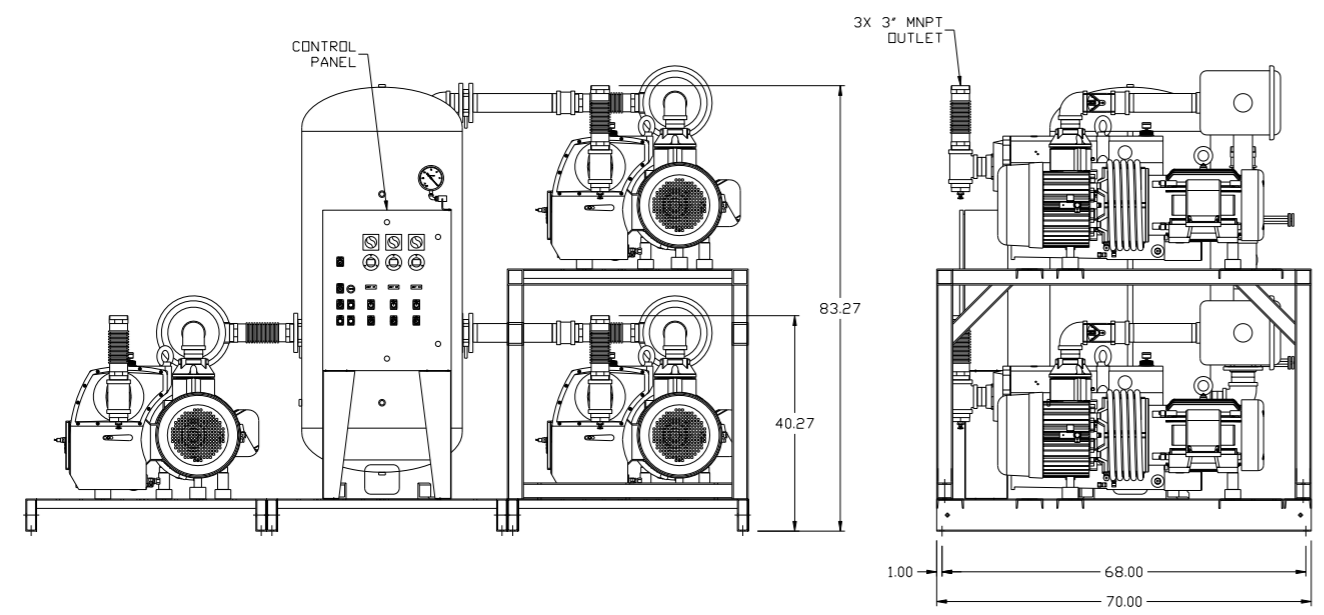
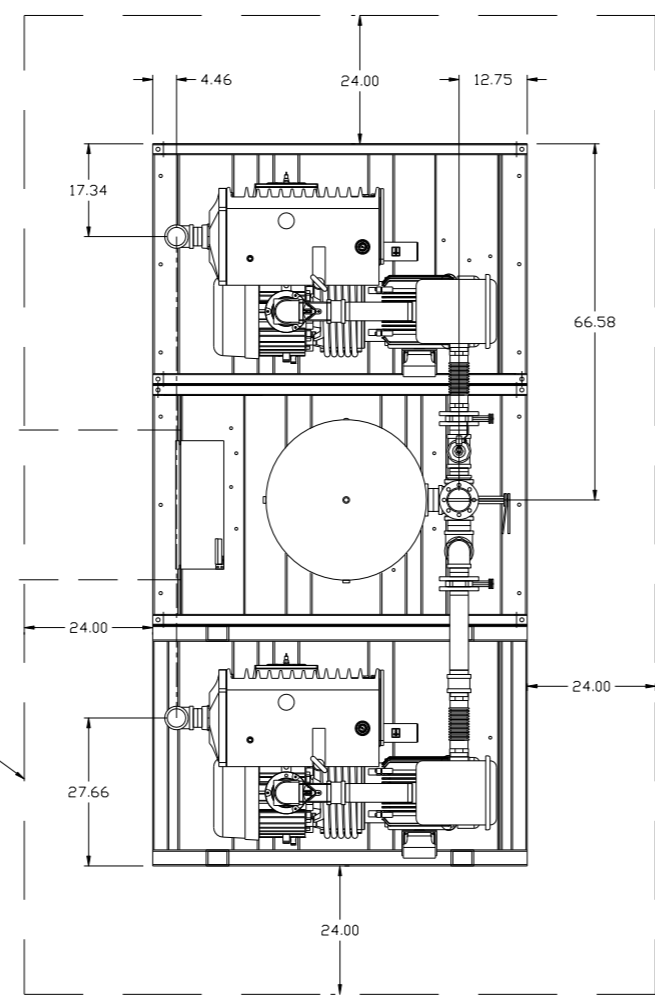


8 7 6 5 4 3 2 1

REV	ZONE	REVISION	DATE	ECN	NAME	CHKD
B-1	ALL	RELEASE TO PRODUCTION	4/24/08	21881	AEK	GES
C-1	2 ALL	REMOVED LOW OIL LIGHT OPTION	8/15/08	21907	AEK	GES
D-1	1 ALL	REMOVED VACUUM SWITCHES FROM CONTROL PANEL	10/19/09	22127	AEK	GES
E-1	1 ALL 1 ADD 2 REMOVE	CORRECTED INLET FLEX LENGTH ADDED SKID WIDTH DIMS ADDED DRIP LEG	10/5/10	22348	AEK	GES
F-1	2 ALL 286 ALL ALL ALL	ADDED SOURCE VALVE INFORMATION MADE HIGH TEMP STANDARD ON BASIC CONTROLS ADDED SIGHT GAUGE CHANGED BALL VALVE/ANION TO BUTTERFLY VALVES REMOVED MULTIPLE VOLTAGE SHEETS ADDED P&ID SHEETS	10/12/15	PXEC0093	AEK	GES

MINIMUM RECOMMENDED ELECTRICAL PANEL CLEARANCE PER OSHA/NEC REQUIREMENTS

MINIMUM RECOMMENDED MAINTENANCE CLEARANCE

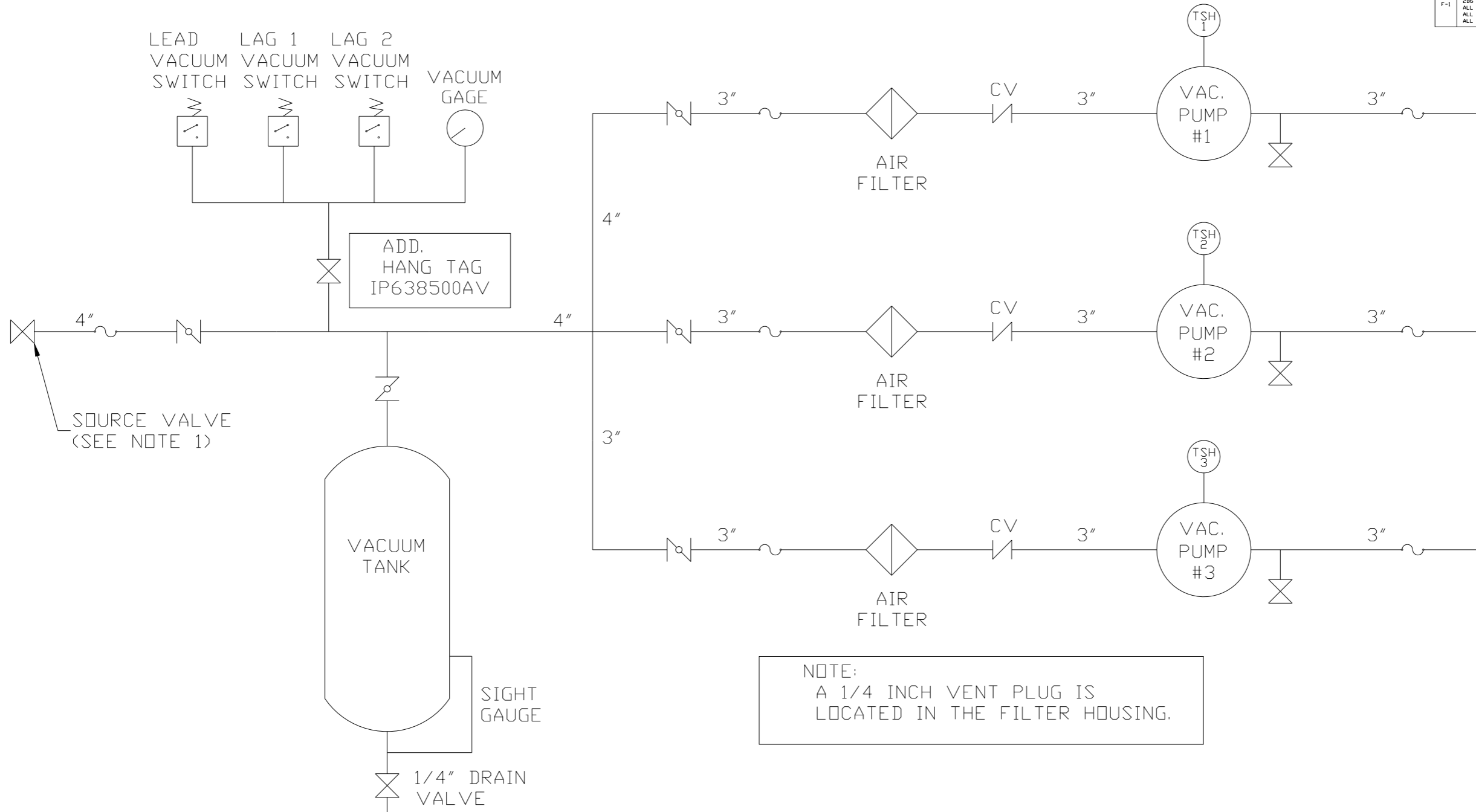


NOTE: SYSTEM DESIGNED IN COMPLIANCE WITH U.S. NFPA '99, LATEST EDITION.

SYMBOL LEGEND ⊖ = MINUS DRAFT ⊕ = PLUS DRAFT TOLERANCES NOT SPECIFIED .XX ± .XXX ± \angle (DEG.) ±		= ADDITIONAL CONTROL REQ'D = BRINELL HARDNESS		Drawings to conform to the current revision of the following ANSI standards: Y14.3 Multi and sectional view dsgs. Y14.5M Dimensioning and tolerancing	
AUTOCAD REL2008 LT INCH		DO NOT SCALE DRAWING FOR DIMENSIONS Sheet 1 of 2 SCALE 1:18		CONFIDENTIAL DISCLOSURE This drawing is the property of POWEREX, INC. of the SCOTT FETZER COMPANY and subject to return on demand. Its contents are confidential and must not be copied or submitted to outside parties for use or examination.	
DRAWN BY AEK		CHECKED BY GES		APPROVED BY ENGINEERING MFG/MKTG DMS RJR	
MATERIAL N/A		DATE 4/24/08		DATE 4/24/08 4/24/08 4/24/08	
PART NAME 15HP VACUUM PACKAGE 200GAL TRIPLEX		 150 PRODUCTION DRIVE, HARRISON, OHIO 45030 Ph 888-769-7979 FAX (513) 367-3125		DWG NO VPT1505	
				SIZE D	

8 7 6 5 4 3 2 1

REV	ZONE	REVISION	DATE	ECN	NAME	CHKD
B-1	ALL	RELEASE TO PRODUCTION	4/24/08	21881	AEK	GES
C-1	2	REMOVED LOW OIL LIGHT OPTION	8/15/08	21907	AEK	GES
D-1	1	REMOVED VACUUM SWITCHES FROM CONTROL PANEL	10/19/09	22127	AEK	GES
E-1	1 ALL 1 ADD 1 REMOVE	CORRECTED INLET FLEX LENGTH ADDED SKID WIDTH DIMS ADDED DRIP LEG	10/5/10	22348	AEK	GES
F-1	2 ALL ALL ALL ALL	ADDED SOURCE VALVE INFORMATION MADE HIGH TEMP STANDARD ON BASIC CONTROLS ADDED SIGHT GAUGE CHANGED BALL VALVE/UNION TO BUTTERFLY VALVES REMOVED MULTIPLE VOLTAGE SHEETS ADDED P&ID SHEETS	10/12/15	PXEC0093	AEK	GES



NOTE:
A 1/4 INCH VENT PLUG IS
LOCATED IN THE FILTER HOUSING.

LEGEND	
	TEMP. SWITCH
	VACUUM SWITCH
	AIR FILTER
	BALL VALVE
	BUTTERFLY VALVE
	CHECK VALVE
	FLEX LINE
	UNION

NOTES:
1) TSH - TEMPERATURE SWITCH HIGH
1) PER NFPA THE SYSTEM WILL REQUIRE A SOURCE VALVE (SUPPLIED BY OTHERS).

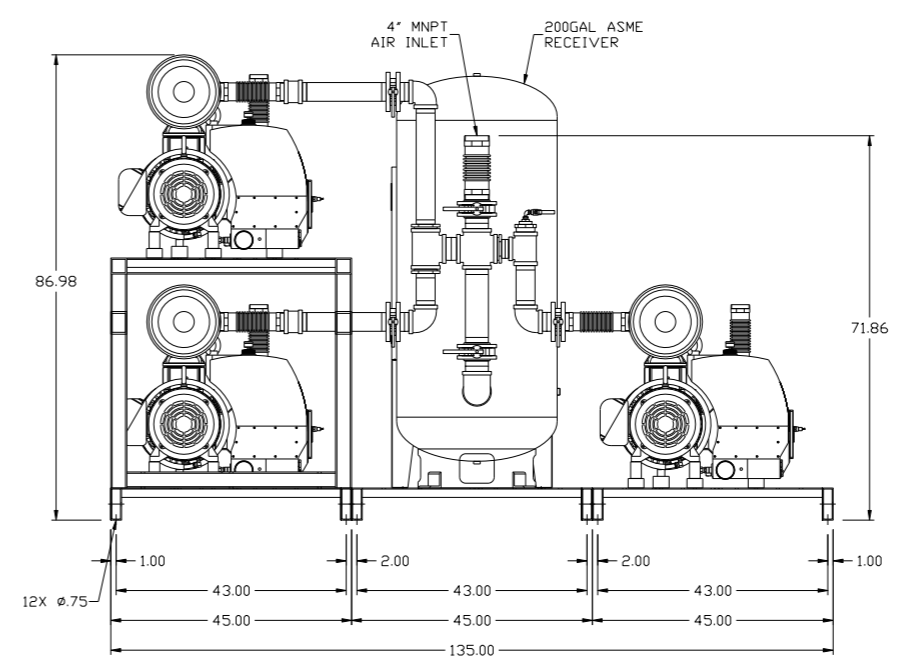
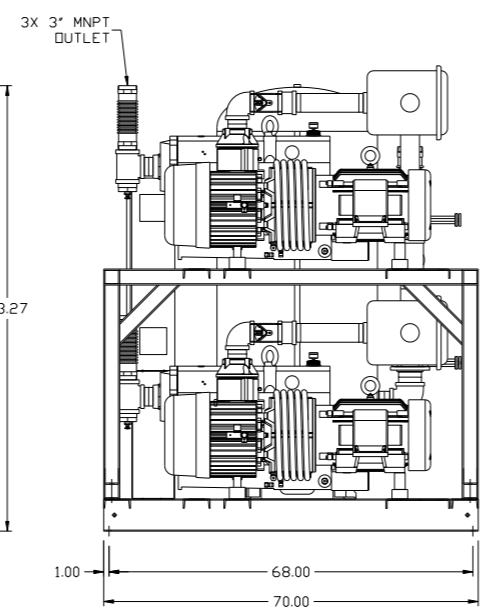
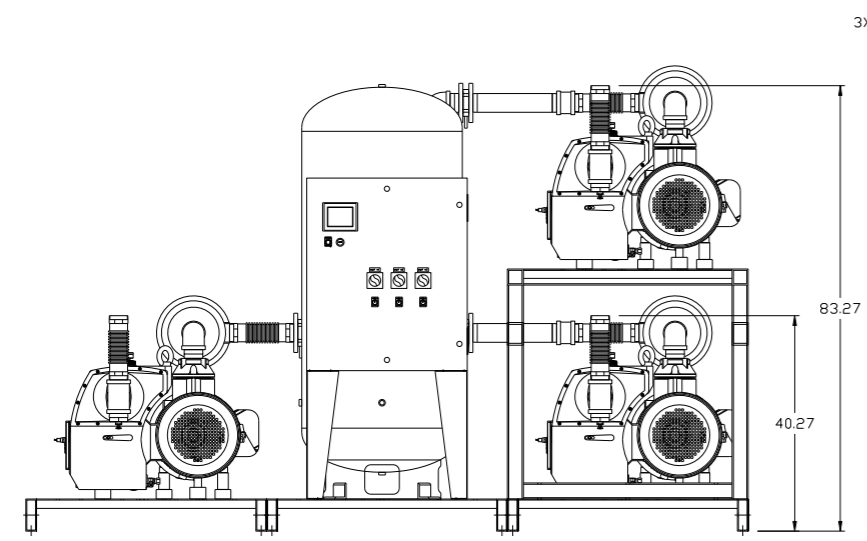
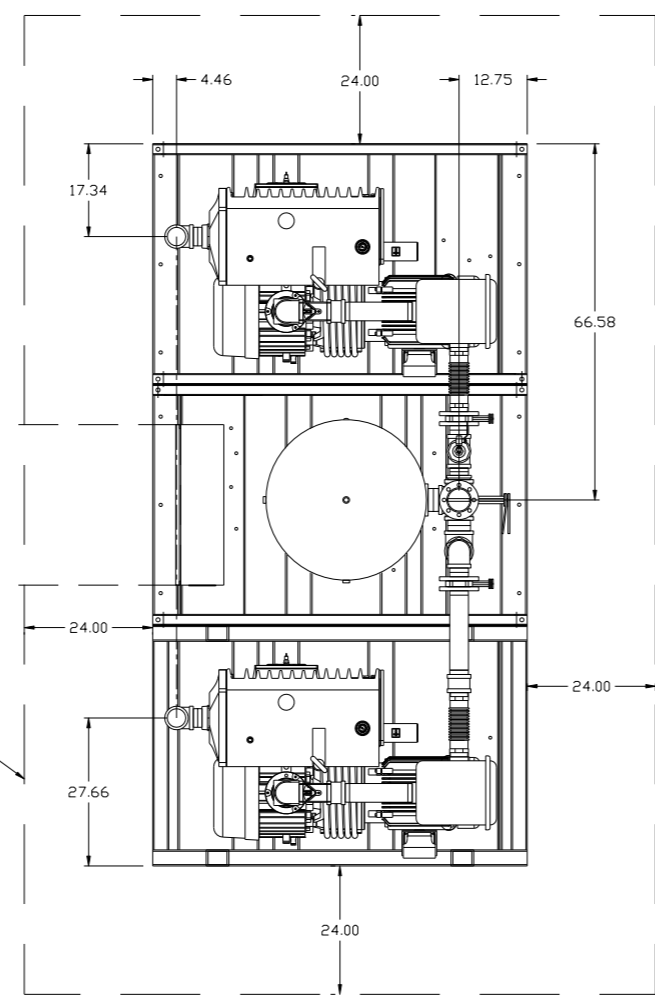
SYMBOL LEGEND			= ADDITIONAL CONTROL REQ'D	Drawings to conform to the current revision of the following ANSI standards: Y14.3 Multi and sectional view dgs. Y14.5M Dimensioning and tolerancing
	= MINUS DRAFT		= BRINELL HARDNESS	
TOLERANCES NOT SPECIFIED		AUTOCAD REL2008 LT	DO NOT SCALE DRAWING FOR DIMENSIONS	
.XX ±		INCH	Sheet 2 of 2	SCALE 1:18
CONFIDENTIAL DISCLOSURE This drawing is the property of POWEREX, INC. of the SCOTT FETZER COMPANY and subject to return on demand. Its contents are confidential and must not be copied or submitted to outside parties for use or examination.				
DRAWN BY	CHECKED BY	APPROVED BY	ENGINEERING MFG/MRKTG	
AEK	GES	DMS	RJR	
4/24/08	4/24/08	4/24/08	4/24/08	
MATERIAL N/A				
PART NAME		150 PRODUCTION DRIVE, HARRISON, OHIO 45030 Ph: 888-769-7979 FAX: (513) 367-3125		
TRIPLEX VACUUM FLOW SCHEMATIC		DWG NO	VPT1505	SIZE D

8 7 6 5 4 3 2 1

REV	ZONE	REVISION	DATE	ECN	NAME	CHKD
2	ALL	ADDED SOURCE VALVE INFORMATION				
1	ALL	MADE HIGH TEMP STANDARD ON BASIC CONTROLS				
F-1	ALL	ADDED SIGHT GAUGE	10/12/15	PXEC0093	AEK	GES
	ALL	CHANGED BALL VALVE/ANION TO BUTTERFLY VALVES				
	ALL	REMOVED MULTIPLE VOLTAGE SHEETS				
	ALL	ADDED PBM1 SHEETS				

MINIMUM RECOMMENDED ELECTRICAL PANEL CLEARANCE PER OSHA/NEC REQUIREMENTS

MINIMUM RECOMMENDED MAINTENANCE CLEARANCE



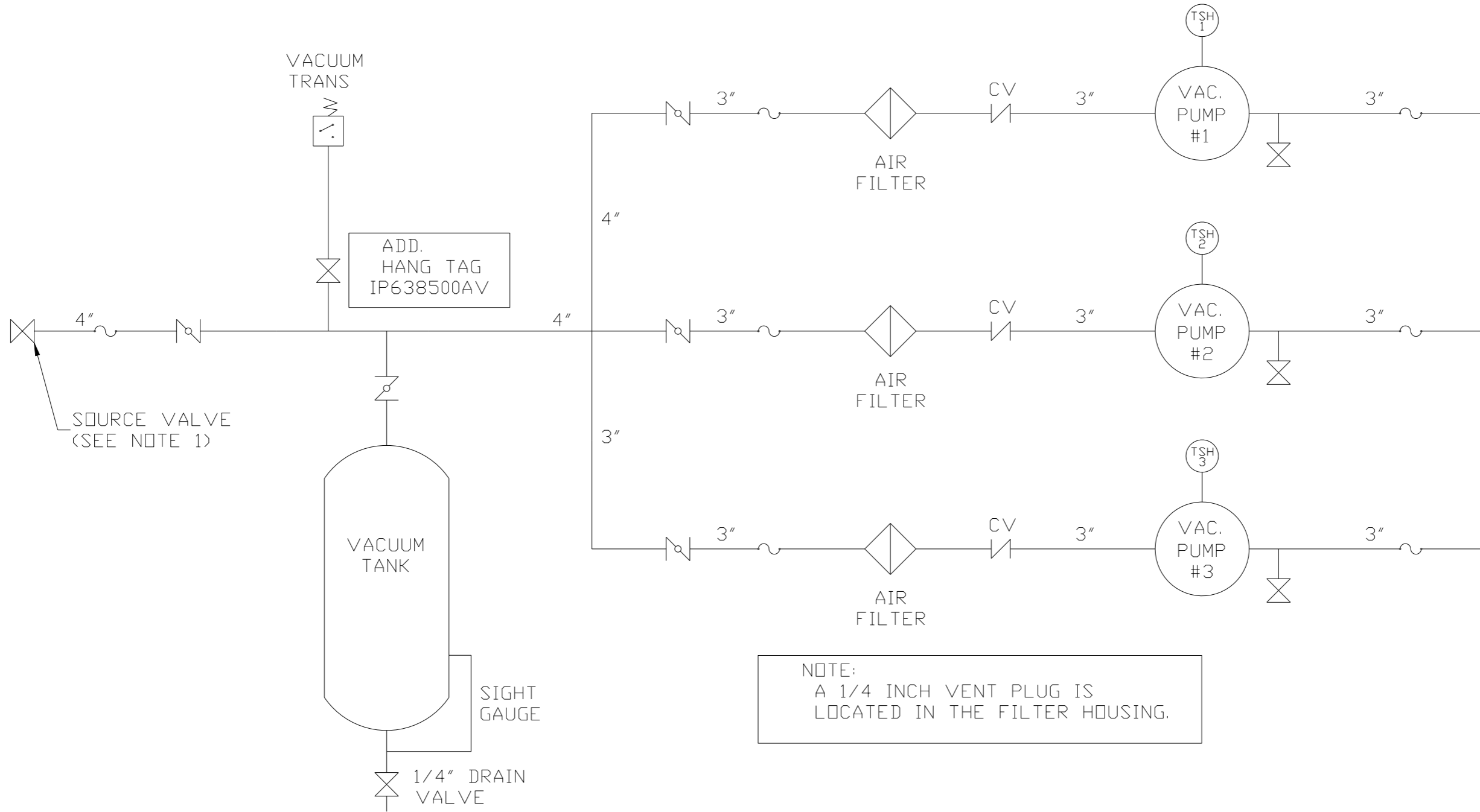
NOTE: SYSTEM DESIGNED IN COMPLIANCE WITH U.S. NFPA '99, LATEST EDITION.

SYMBOL LEGEND ⊖ = MINUS DRAFT ⊕ = PLUS DRAFT Ⓢ = BRINELL HARDNESS ⊕ = ADDITIONAL CONTROL REQ'D Ⓢ = BRINELL HARDNESS		Drawings to conform to the current revision of the following ANSI standards: Y14.3 Multi and sectional view dgs. Y14.5M Dimensioning and tolerancing	
TOLERANCES NOT SPECIFIED .XX ± .XXX ± \angle (DEG.) ±		AUTOCAD REL2008 LT INCH DO NOT SCALE DRAWING FOR DIMENSIONS Sheet 1 of 2 SCALE 1:18	
CONFIDENTIAL DISCLOSURE This drawing is the property of POWEREX, INC. of the SCOTT FETZER COMPANY and subject to return on demand. Its contents are confidential and must not be copied or submitted to outside parties for use or examination.			
DRAWN BY AEK		CHECKED BY GES	
10/12/15		APPROVED BY ENGINEERING MFG/MKTG KMD RJR 10/12/15 10/12/15	
MATERIAL N/A			
PART NAME 15HP VACUUM PACKAGE 200GAL TRIPLEX		 150 PRODUCTION DRIVE, HARRISON, OHIO 45030 Ph: 888-769-7979 FAX: (513) 367-3125	
DWG NO VPT1505		SIZE D	

8 7 6 5 4 3 2 1

VPT1505B.dwg

REV	ZONE	REVISION	DATE	ECN	NAME	CHKD
2	ALL	ADDED SOURCE VALVE INFORMATION				
1	ALL	MADE HIGH TEMP STANDARD ON BASIC CONTROLS				
1	ALL	ADDED SIGHT GAUGE				
F-1	ALL	CHANGED BALL VALVE/UNION TO BUTTERFLY VALVES	10/12/15	PXEC0093	AEK	GES
1	ALL	REMOVED MULTIPLE VOLTAGE SHEETS				
1	ALL	ADDED PBMI SHEETS				



NOTE:
A 1/4 INCH VENT PLUG IS
LOCATED IN THE FILTER HOUSING.

LEGEND	
	TEMP. SWITCH
	AIR FILTER
	BALL VALVE
	BUTTERFLY VALVE
	VACUUM SWITCH
	CHECK VALVE
	FLEX LINE
	UNION

NOTES:
1) TSH - TEMPERATURE SWITCH HIGH
1) PER NFPA THE SYSTEM WILL REQUIRE A SOURCE VALVE (SUPPLIED BY OTHERS).

SYMBOL LEGEND			= ADDITIONAL CONTROL REQ'D	Drawings to conform to the current revision of the following ANSI standards
	= MINUS DRAFT		= BRINELL HARDNESS	Y14.3 Multi and sectional view dsgs. Y14.5M Dimensioning and tolerancing
TOLERANCES NOT SPECIFIED		AUTOCAD REL2008 LT	DO NOT SCALE DRAWING FOR DIMENSIONS	
.XX ±		INCH	Sheet 2 of 2	SCALE 1:18
.XXX ±				
< < DEG > ±				
CONFIDENTIAL DISCLOSURE This drawing is the property of POWEREX, INC. of the SCOTT FETZER COMPANY and subject to return on demand. Its contents are confidential and must not be copied or submitted to outside parties for use or examination.				
DRAWN BY	CHECKED BY	ENGINEERING	APPROVED BY	MFG/MKTG
AEK	GES	KMD	RJR	
10/12/15	10/12/15	10/12/15	10/12/15	
MATERIAL		N/A		
PART NAME		TRIPLEX VACUUM FLOW SCHEMATIC		
DWG NO		VPT1505		
SIZE		D		