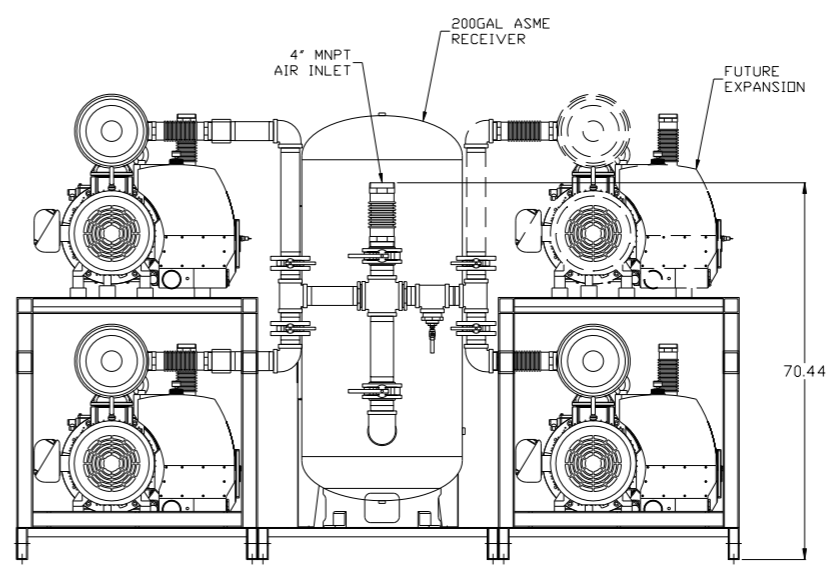
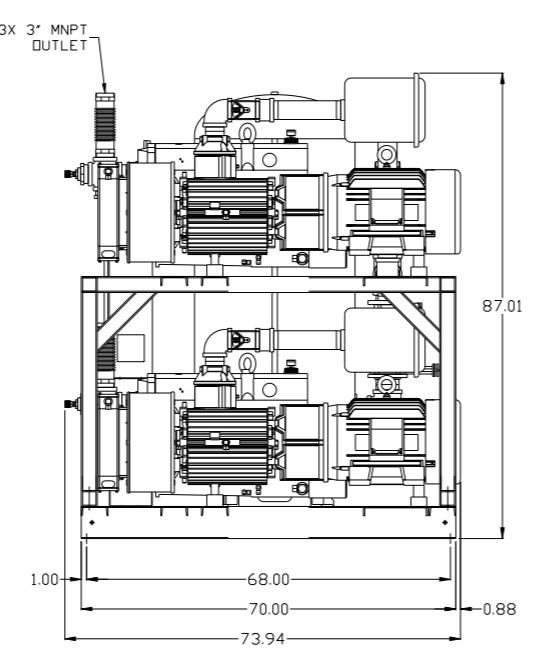
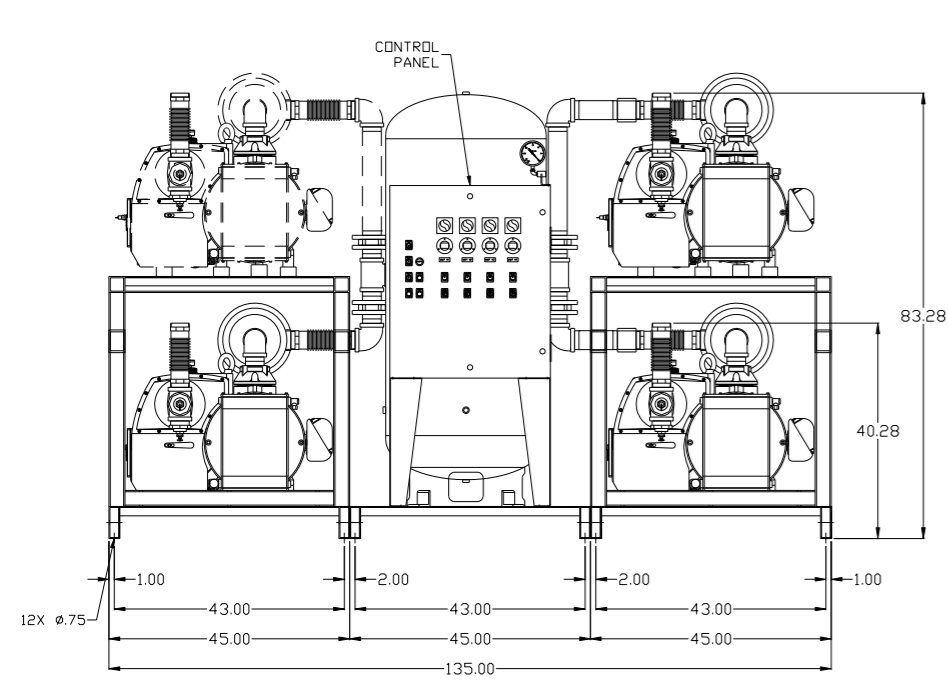
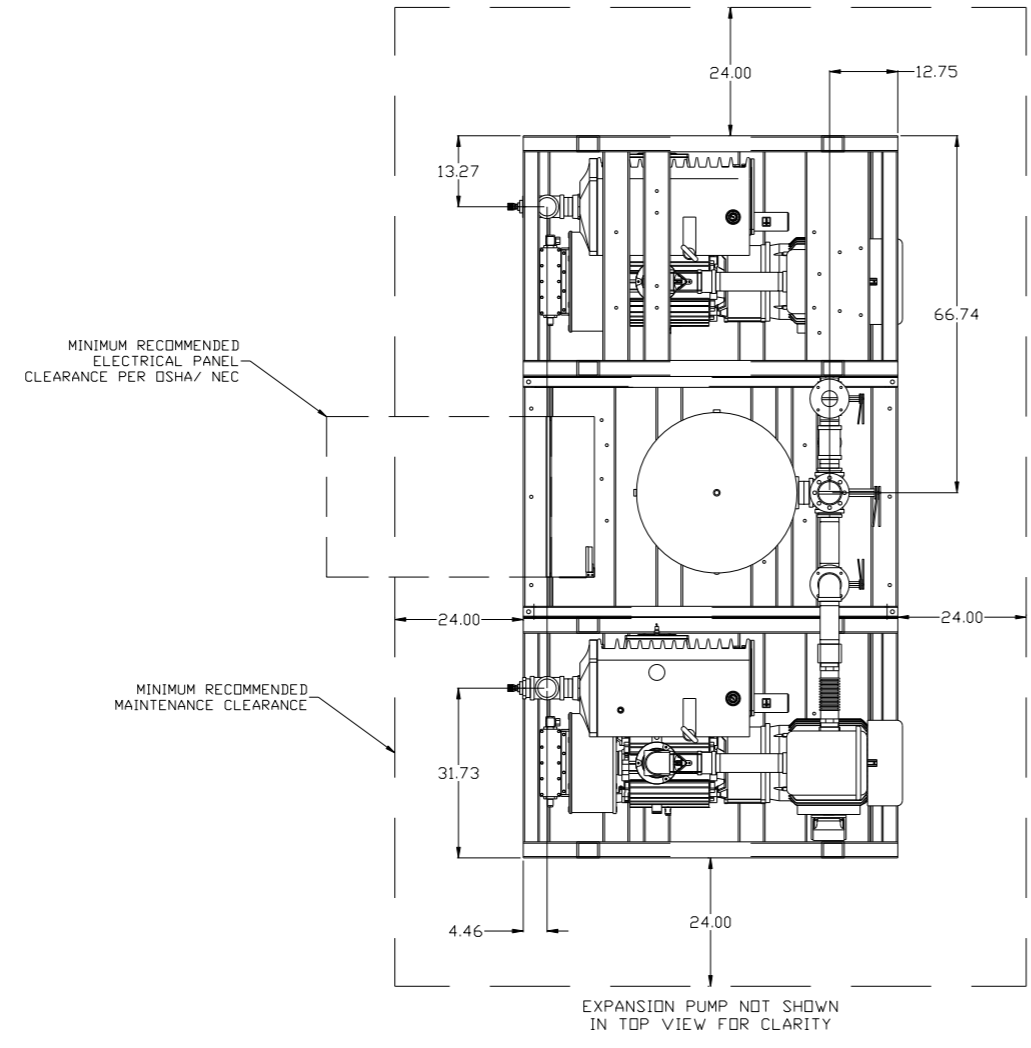


8 7 6 5 4 3 2 1

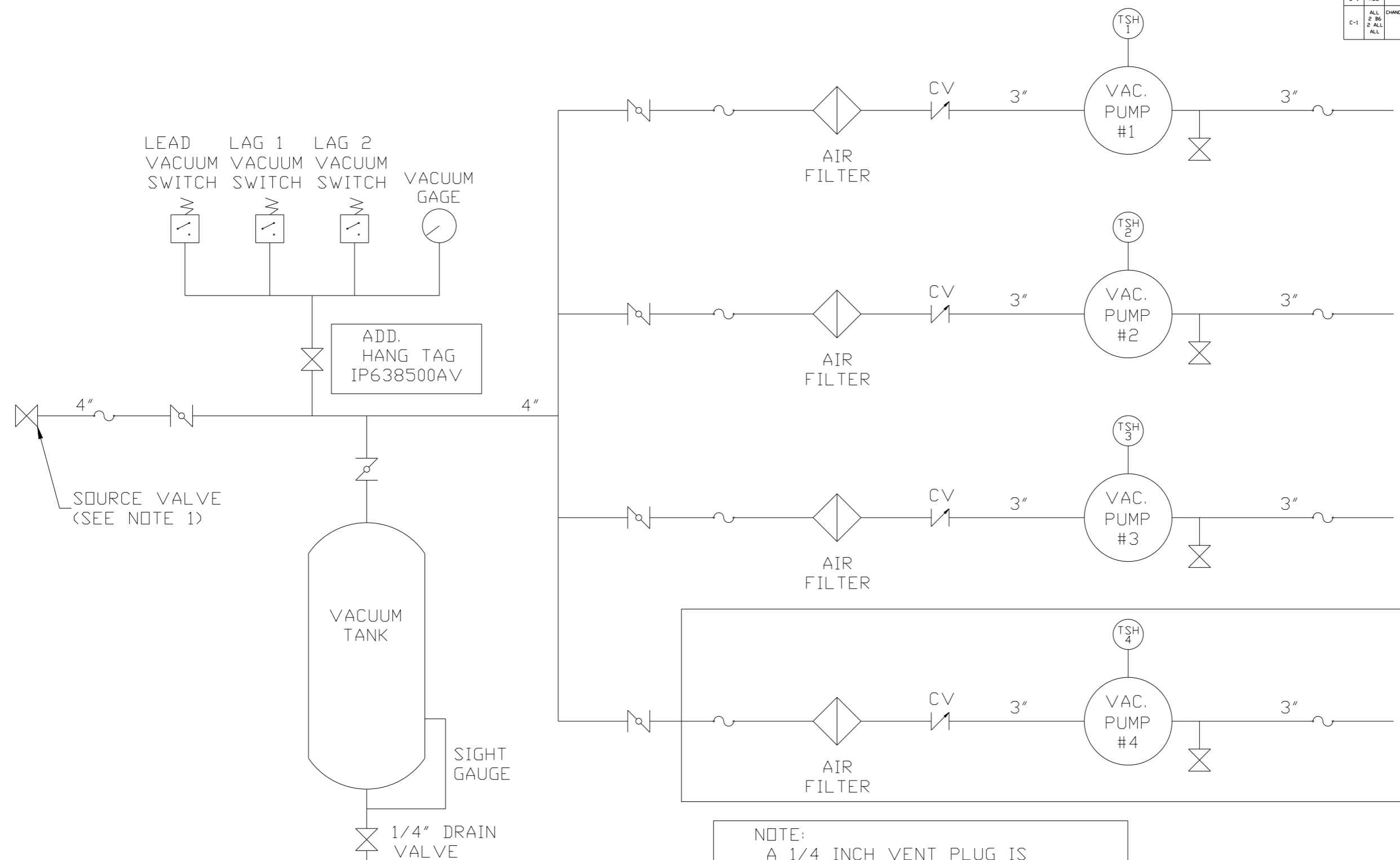
REV	ZONE	REVISION	DATE	ECN	NAME	CHKD
B-1	ALL	RELEASE TO PRODUCTION	10/28/09	22126	AEK	GES
C-1	ALL	CHANGED BALL VALVE/UNION TO BUTTERFLY VALVE	9/25/13	PXEC0028	AEK	GES
	2	ADDED SIGHT GAUGE				
	ALL	ADDED SOURCE VALVE INFORMATION ADDED P&ID/H&I SHEETS				



SYMBOL LEGEND ⊖ = MINUS DRAFT ⊕ = PLUS DRAFT Ⓢ = ADDITIONAL CONTROL REQ'D Ⓢ = BRINELL HARDNESS		Drawings to conform to the current revision of the following ANSI standards: Y14.3 Multi and sectional view dgs. Y14.5M Dimensioning and tolerancing	
TOLERANCES NOT SPECIFIED .XX ± .XXX ± \angle (DEG) ±		DO NOT SCALE DRAWING FOR DIMENSIONS Sheet 1 of 2 SCALE 1:18	
CONFIDENTIAL DISCLOSURE This drawing is the property of POWEREX, INC. of the SCOTT FETZER COMPANY and subject to return on demand. Its contents are confidential and must not be copied or submitted to outside parties for use or examination.		DRAWN BY: AEK CHECKED BY: GES APPROVED BY: DMS, TZ 10/28/09 10/28/09 10/28/09 10/28/09	
MATERIAL: N/A		 150 PRODUCTION DRIVE, HARRISON, OHIO 45030 Ph: 888-769-7979 FAX: (513) 367-3125	
PART NAME: 25HP TRIPLEX EXP 200GAL VAC PKG		DWG NO: VPT2505-EXP SIZE: D	

8 7 6 5 4 3 2 1

REV	ZONE	REVISION	DATE	ECN	NAME	CHKD
B-1	ALL	RELEASE TO PRODUCTION	10/28/09	22126	AEK	GES
C-1	ALL	CHANGED BALL VALVE/UNION TO BUTTERFLY VALVE	9/25/13	PXEC0028	AEK	GES
	2 B6	ADDED SIGHT GAUGE				
	2 ALL	ADDED SOURCE VALVE INFORMATION				
	ALL	ADDED P&ID/H&I SHEETS				



NOTE:
A 1/4 INCH VENT PLUG IS LOCATED IN THE FILTER HOUSING.

FUTURE EXPANSION

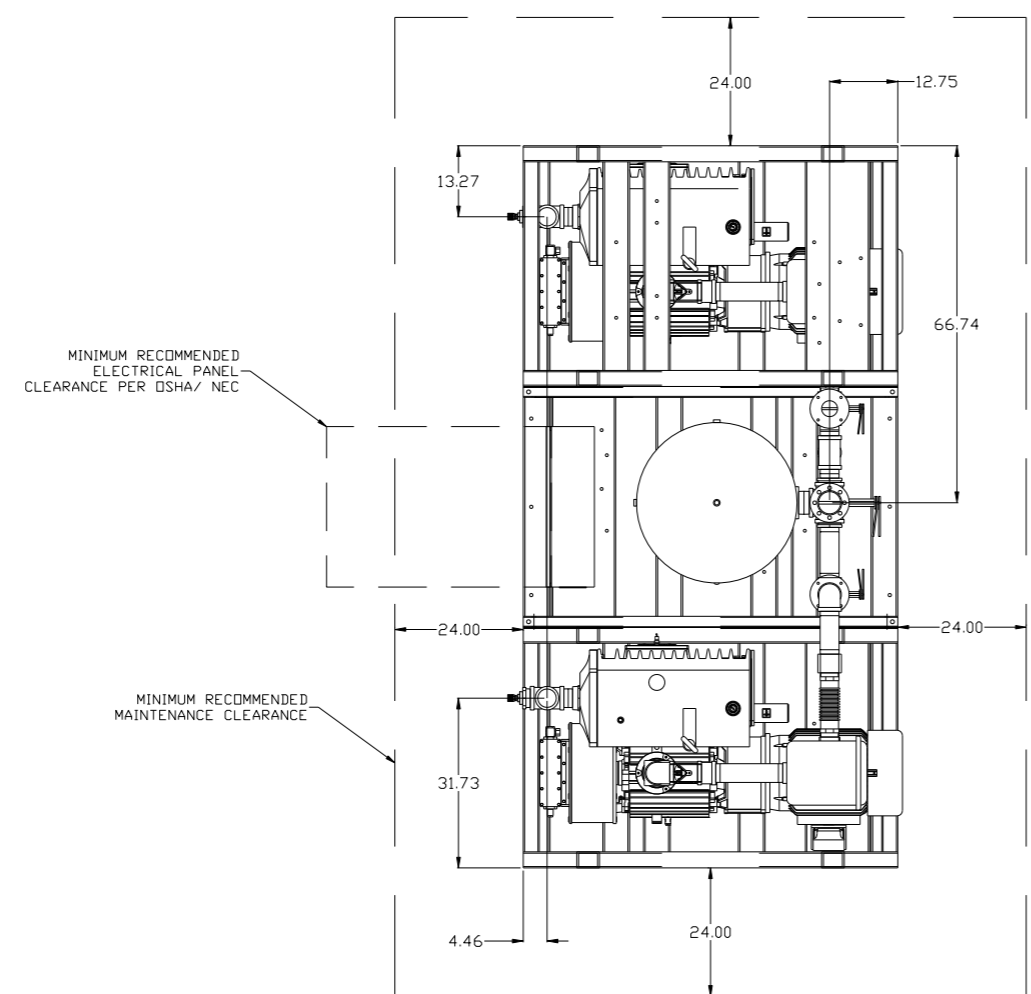
LEGEND	
	TEMP. SWITCH
	VACUUM SWITCH
	AIR FILTER
	BALL VALVE
	BUTTERFLY VALVE
	CHECK VALVE
	FLEX LINE
	UNION

NOTES:
1) TSH - TEMPERATURE SWITCH HIGH
1) PER NFPA THE SYSTEM WILL REQUIRE A SOURCE VALVE (SUPPLIED BY OTHERS).

SYMBOL LEGEND			ADDITIONAL CONTROL REQ'D	Drawings to conform to the current revision of the following ANSI standards
	MINUS DRAFT		BRINELL HARDNESS	Y14.3 Multi and sectional view dsgs. Y14.5M Dimensioning and tolerancing
TOLERANCES NOT SPECIFIED		AUTOCAD REL2008 LT	DO NOT SCALE DRAWING FOR DIMENSIONS	
.XX ±	.XXX ±	<DEG> ±	INCH	SCALE 1:18
CONFIDENTIAL DISCLOSURE This drawing is the property of POWEREX, INC. of the SCOTT FETZER COMPANY and subject to return on demand. Its contents are confidential and must not be copied or submitted to outside parties for use or examination.				
DRAWN BY	CHECKED BY	APPROVED BY	MFG/MRKTG	
AEK	GES	DMS	TZ	
10/28/09	10/28/09	10/28/09	10/28/09	
MATERIAL N/A				
PART NAME TRIPLEX EXP VAC PKG FLOW SCHEMATIC		150 PRODUCTION DRIVE, HARRISON, OHIO 45030 Ph: 888-769-7979 FAX: (513) 367-3125		
DWG NO VPT2505-EXP		SIZE D		

8 7 6 5 4 3 2 1

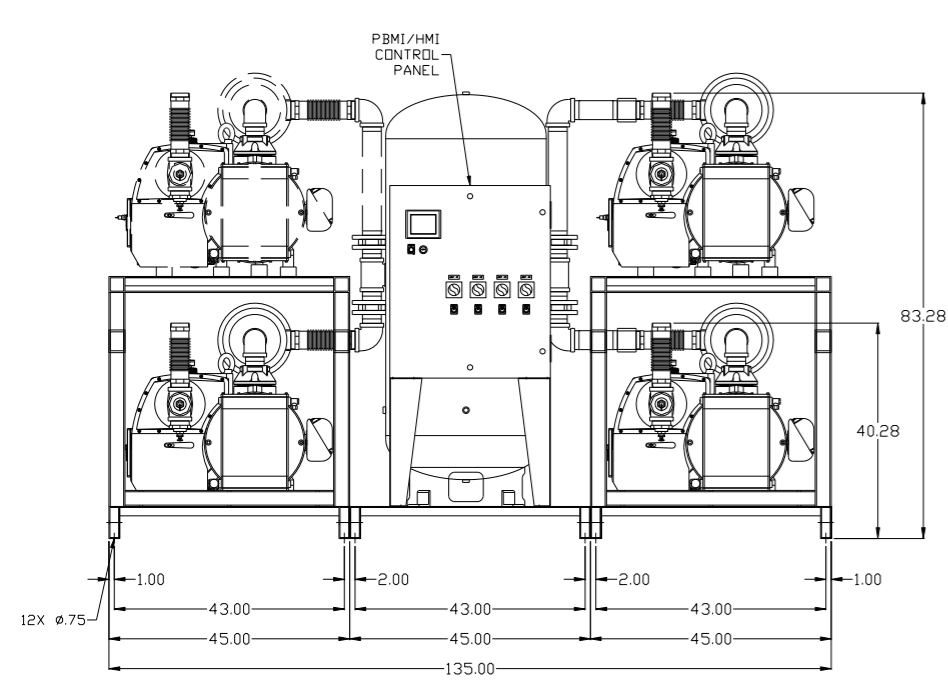
REV	ZONE	REVISION	DATE	ECN	NAME	CHKD
C-1	ALL	CHANGED BALL VALVE/UNION TO BUTTERFLY VALVE	9/25/13	PXEC0028	AEK	GES
	2	ADDED SIGHT GAUGE				
	2	ADDED SOURCE VALVE INFORMATION				
	ALL	ADDED PBM/HMI SHEETS				



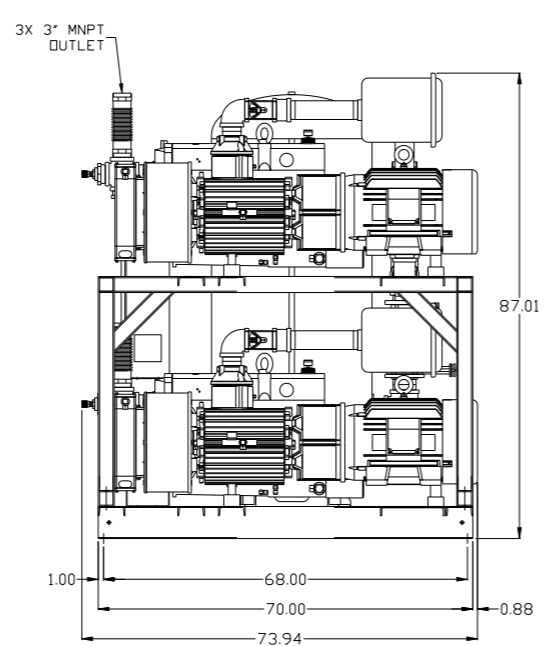
MINIMUM RECOMMENDED ELECTRICAL PANEL CLEARANCE PER OSHA/NEC

MINIMUM RECOMMENDED MAINTENANCE CLEARANCE

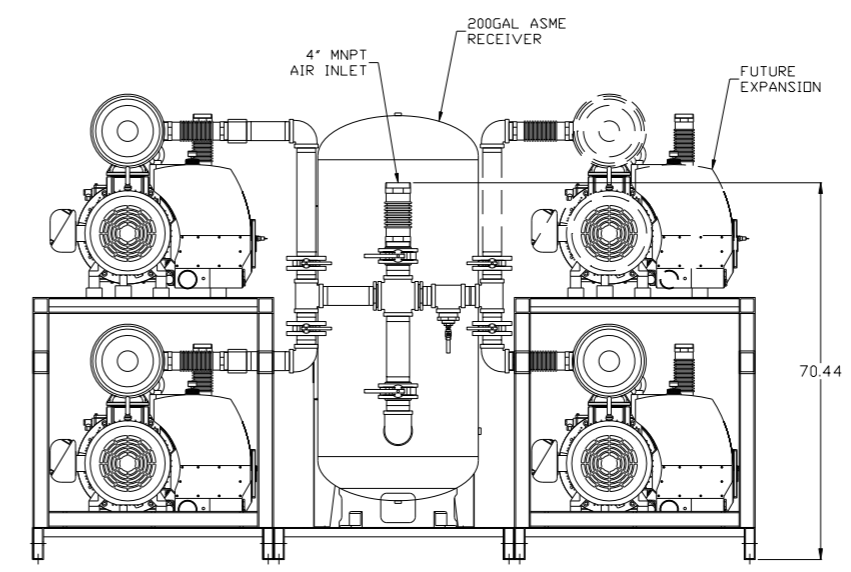
EXPANSION PUMP NOT SHOWN IN TOP VIEW FOR CLARITY



PBM/HMI CONTROL PANEL



3X 3" MNPT OUTLET



200GAL ASME RECEIVER

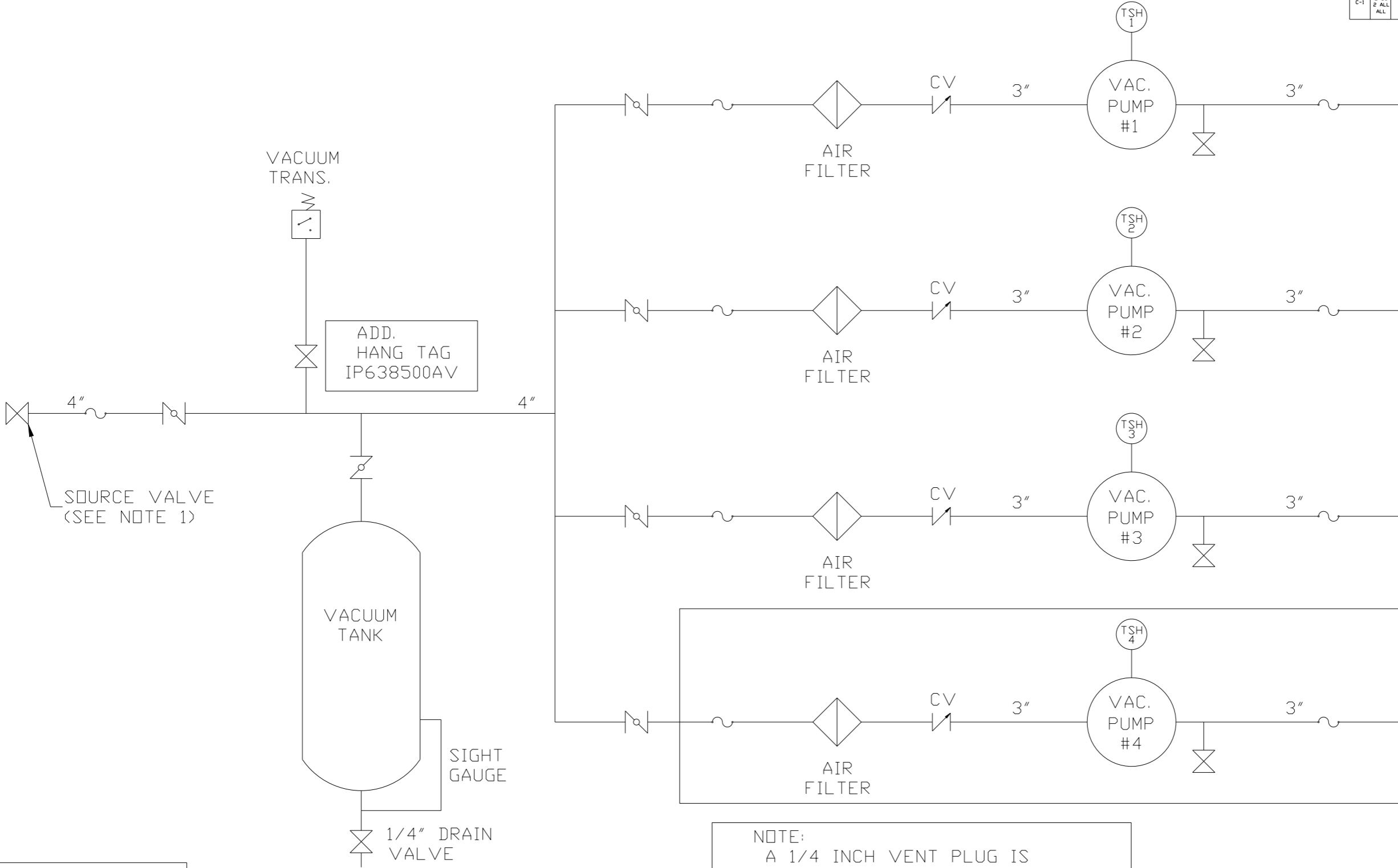
4" MNPT AIR INLET

FUTURE EXPANSION

SYMBOL LEGEND ⊖ = MINUS DRAFT ⊕ = PLUS DRAFT Ⓢ = ADDITIONAL CONTROL REQ'D Ⓢ = BRINELL HARDNESS		Drawings to conform to the current revision of the following ANSI standards: Y14.3 Multi and sectional view dsgs. Y14.5M Dimensioning and tolerancing	
TOLERANCES NOT SPECIFIED .XX ± .XXX ± <DEG> ±		DO NOT SCALE DRAWING FOR DIMENSIONS Sheet 1 of 2 SCALE 1:18	
CONFIDENTIAL DISCLOSURE This drawing is the property of POWEREX, INC. of the SCOTT FETZER COMPANY and subject to return on demand. Its contents are confidential and must not be copied or submitted to outside parties for use or examination.		AUTOCAD REL2008 LT INCH	
DRAWN BY: AEK CHECKED BY: GES 9/25/13		APPROVED BY: DMS, RJR 9/25/13, 9/25/13, 9/25/13, 9/25/13	
MATERIAL: N/A PART NAME: 25HP TRIPLEX EXP 200GAL VAC PKG		 150 PRODUCTION DRIVE, HARRISON, OHIO 45030 Ph: 888-769-7979 FAX: (513) 367-3125 DWG NO: VPT2505-EXP SIZE: D	

8 7 6 5 4 3 2 1

REV	ZONE	REVISION	DATE	ECN	NAME	CHKD
C-1	ALL	CHANGED BALL VALVE/UNION TO BUTTERFLY VALVE	9/25/13	PXEC0028	AEK	GES
	2	ADDED SIGHT GAUGE				
	2	ADDED SOURCE VALVE INFORMATION				
	ALL	ADDED PBM/HMI SHEETS				



ADD.
HANG TAG
IP638500AV

NOTE:
A 1/4 INCH VENT PLUG IS
LOCATED IN THE FILTER HOUSING.

LEGEND	
	TEMP. SWITCH
	AIR FILTER
	BALL VALVE
	BUTTERFLY VALVE
	VACUUM SWITCH
	CHECK VALVE
	FLEX LINE
	UNION

NOTES:
1) TSH - TEMPERATURE SWITCH HIGH
1) PER NFPA THE SYSTEM WILL REQUIRE A SOURCE VALVE (SUPPLIED BY OTHERS).

SYMBOL LEGEND		= ADDITIONAL CONTROL REQ'D		Drawings to conform to the current revision of the following ANSI standards	
= MINUS DRAFT		= BRINELL HARDNESS		Y14.3 Multi and sectional view dgs. Y14.5M Dimensioning and tolerancing	
= PLUS DRAFT					
TOLERANCES NOT SPECIFIED		AUTOCAD REL2008 LT		DO NOT SCALE DRAWING FOR DIMENSIONS	
.XX ±		INCH		Sheet 2 of 2	
.XXX ±				SCALE 1:18	
<DEG> ±					
CONFIDENTIAL DISCLOSURE					
This drawing is the property of POWEREX, INC. of the SCOTT FETZER COMPANY and subject to return on demand. Its contents are confidential and must not be copied or submitted to outside parties for use or examination.					
DRAWN BY		CHECKED BY		APPROVED BY	
AEK		GES		DMS RJR	
9/25/13		9/25/13		9/25/13 9/25/13	
MATERIAL N/A					
PART NAME					
TRIPLEX EXP VAC PKG					
FLOW SCHEMATIC					
DWG NO				SIZE	
VPT2505-EXP				D	