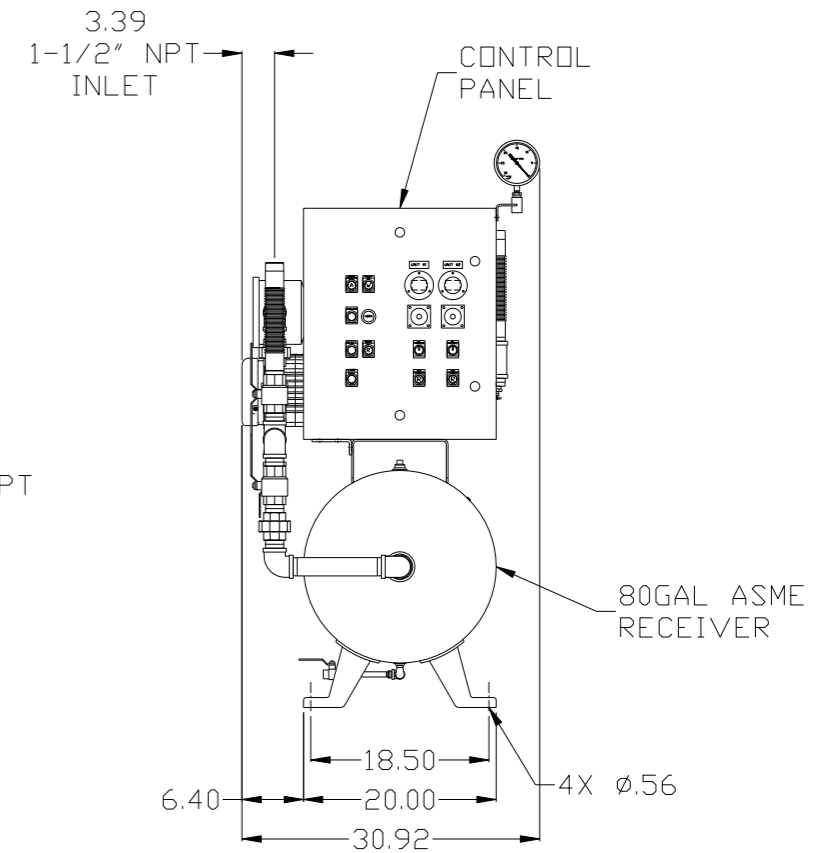
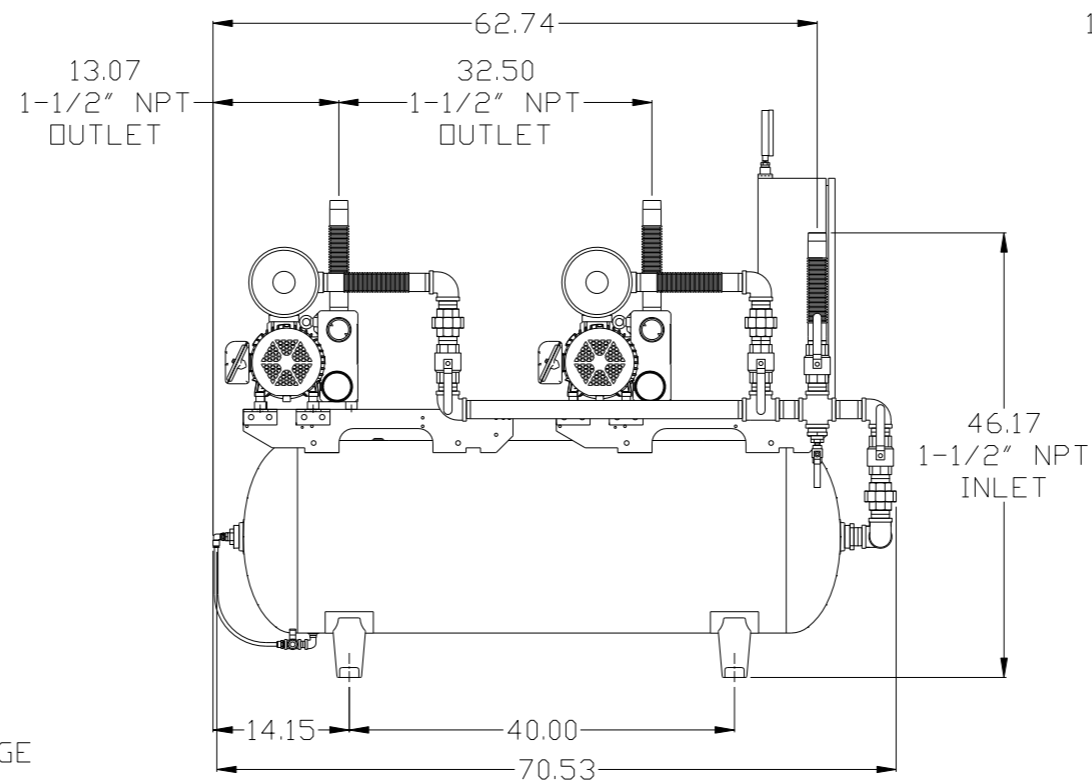
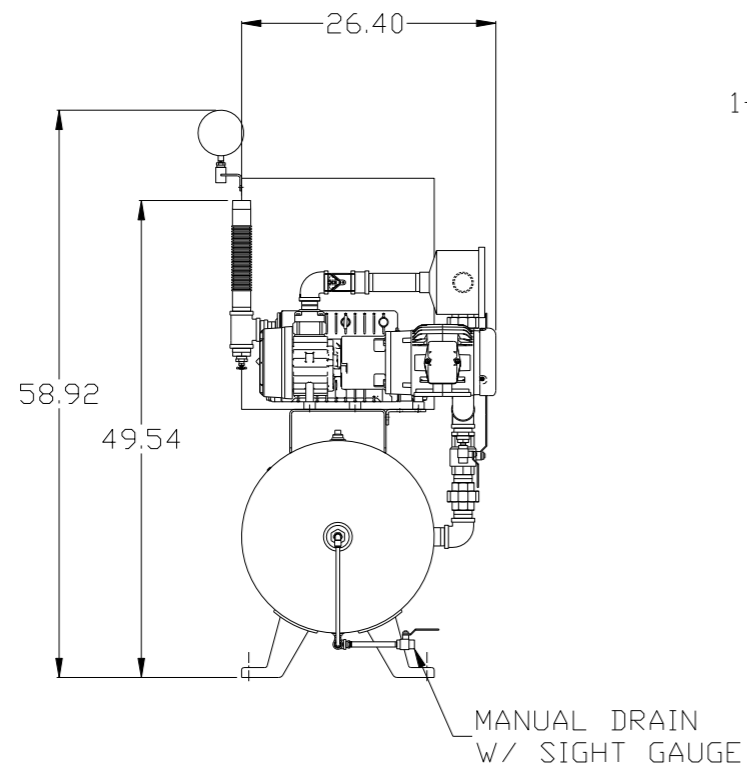


REV	ZONE	REVISION	DATE	ECN	NAME	CHKD
B-1	ALL	RELEASE FOR PRODUCTION	2/27/08	21881	AEK	GES
B-2	ALL	UPDATED LAYOUT & FLOW TO CURRENT STANDARD	3/17/08	21881	AEK	GES
B-3	2 B6 1 ALL	REMOVED SIGHT GAUGE FROM FLOW MOUNTED PUMP USING STANDARD BRACKETS	4/28/08	21881	AEK	GES
C-1	2 C3	REMOVED LOW OIL LIGHT OPTION	7/18/08	21907	AEK	GES
C-2	1 ALL	MOVED INLET PLUMBING TO MOTOR SIDE	8/29/08	21907	AEK	GES
D-1	1 ALL	ADJUSTED INLET LOCATION PER NEC	6/3/09	22127	AEK	GES
D-2	1 ALL	REMOVED VACUUM SWITCHES FROM CONTROL PANEL	10/29/09	22127	AEK	GES
E-1	2 C3	ADDED DRIP LEG	3/16/10	22348	AEK	DMS
F-1	ALL	ADDED PBM SHEETS	11/21/11	22610	AEK	GES
G-1	2 C3.03	MOVED VACUUM SWITCH TO PUMP	4/26/12	22772	AEK	DMS
H-1	2 B5 2 ALL	ADDED SIGHT GAUGE ADDED SOURCE VALVE INFORMATION	10/10/12	22723	AEK	DMS
J-1	ALL	MADE HIGH TEMP STANDARD ON BASIC CONTROLS	1/13/14	PXEC0067	AEK	GES
K-1	1 ALL	UPDATED PUMP TO CURRENT BUILD	8/31/16	PXEC0148	AEK	DMS

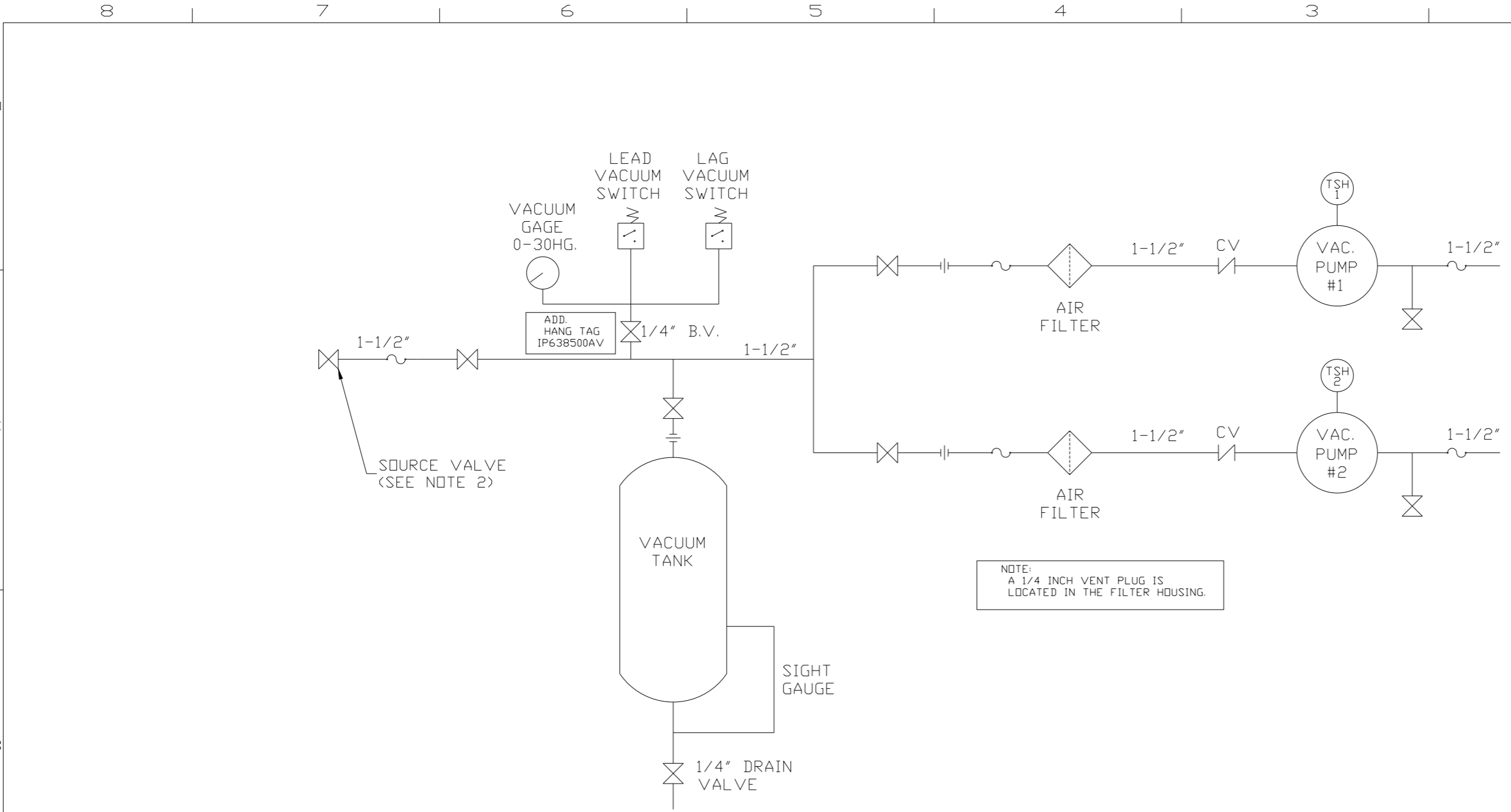


NOTE: SYSTEM DESIGNED IN COMPLIANCE WITH U.S. NFPA '99, LATEST EDITION.

NOTE: A MINIMUM OF 24" CLEARANCE IS RECOMMENDED AROUND THE ENTIRE UNIT.

<b>SYMBOL LEGEND</b> ⊖ = MINUS DRAFT ⊕ = PLUS DRAFT HRC = BRINELL HARDNESS		= ADDITIONAL CONTROL REQ'D = BRINELL HARDNESS		Drawings to conform to the current revision of the following ANSI standards: Y14.3 Multi and sectional view dgs. Y14.5M Dimensioning and tolerancing
TOLERANCES NOT SPECIFIED .XX ± .XXX ± <DEG> ±		AUTOCAD REL2008 LT INCH		DO NOT SCALE DRAWING FOR DIMENSIONS Sheet 1 of 2 SCALE 1:10
<b>CONFIDENTIAL DISCLOSURE</b> This drawing is the property of POWEREX, INC. of the SCOTT FITZGER COMPANY and subject to return on demand. Its contents are confidential and must not be copied or submitted to outside parties for use or examination.				
DRAWN BY AEK		CHECKED BY GES		APPROVED BY ENGINEERING MFG/MRKTG DMS RJR
MATERIAL N/A		DATE 2/27/08		DATE 2/27/08 2/27/08 2/27/08
PART NAME 1. 5HP. VACUUM 80GAL. DUPLEX		 150 PRODUCTION DRIVE, HARRISON, OHIO 45030 Ph: 888-769-7979 FAX: (513) 367-3125		DWG NO VTDO153 SIZE D

REV	ZONE	REVISION	DATE	ECN	NAME	CHKD
B-1	ALL	RELEASE FOR PRODUCTION	2/27/08	21881	AEK	GES
B-2	ALL	UPDATED LAYOUT & FLOW TO CURRENT STANDARD	3/17/08	21881	AEK	GES
B-3	2 B6 1 ALL	REMOVED SIGHT GAUGE FROM FLOW MOUNTED SPECIAL MOUNTING BRACKET; MOVED MOTOR FEET MOUNTED PUMP USING STANDARD BRACKETS	4/28/08	21881	AEK	GES
C-1	2 C3	REMOVED LOW OIL LIGHT OPTION	7/18/08	21907	AEK	GES
C-2	1 ALL	MOVED INLET PLUMBING TO MOTOR SIDE	8/29/08	21907	AEK	GES
D-1	1 ALL	ADJUSTED INLET LOCATION PER NEC	6/3/09	22127	AEK	GES
D-2	1 ALL	REMOVED VACUUM SWITCHES FROM CONTROL PANEL	10/29/09	22127	AEK	GES
E-1	2 C3	ADDED DRIP LEG	3/16/10	22348	AEK	DMS
F-1	ALL	ADDED PBM SHEETS	11/21/11	22610	AEK	GES
G-1	2 C3.03	MOVED VACUUM SWITCH TO PUMP	4/26/12	22772	AEK	DMS
H-1	2 B5 2 ALL	ADDED SIGHT GAUGE ADDED SOURCE VALVE INFORMATION	10/10/12	22723	AEK	DMS
J-1	ALL	MADE HIGH TEMP STANDARD DN BASIC CONTROLS	1/13/14	PXEC0067	AEK	GES
K-1	1 ALL	UPDATED PUMP TO CURRENT BUILD	8/31/16	PXEC0148	AEK	DMS



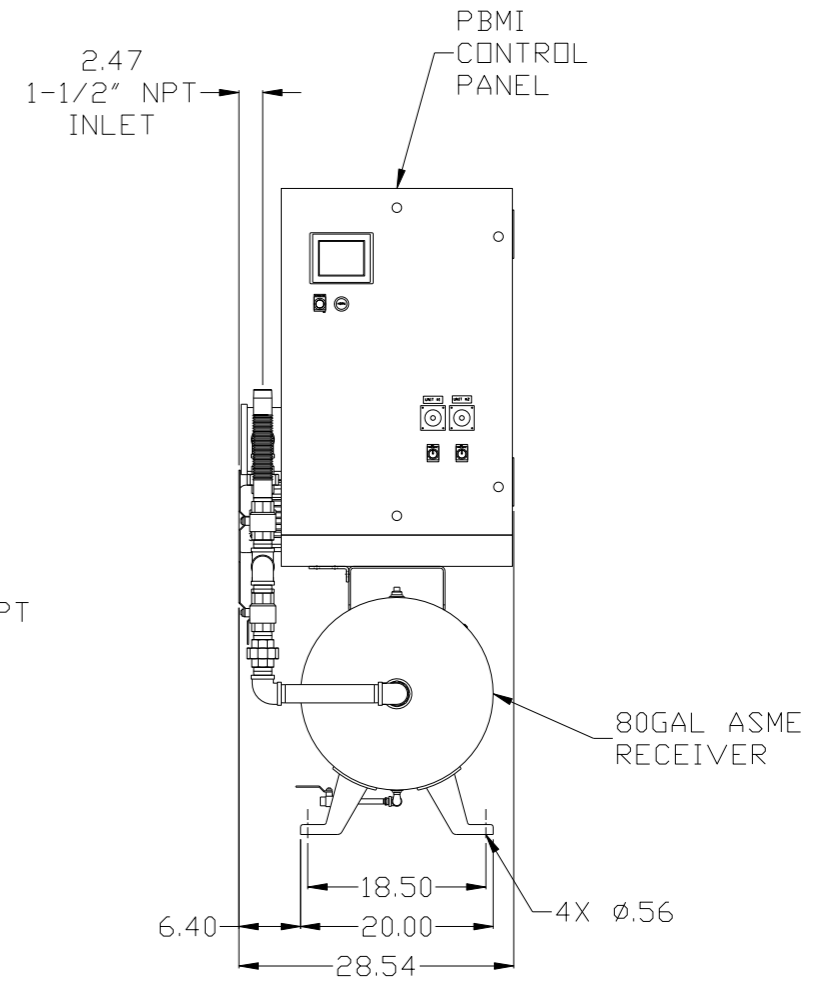
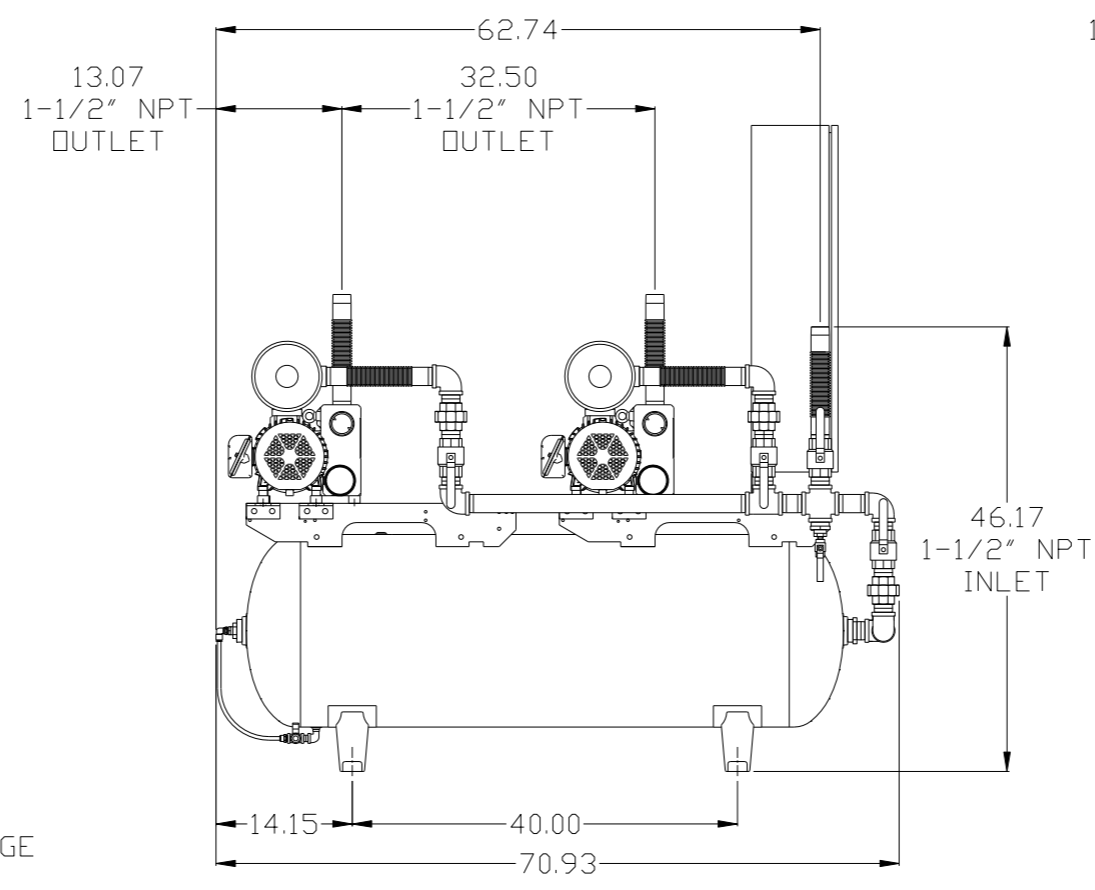
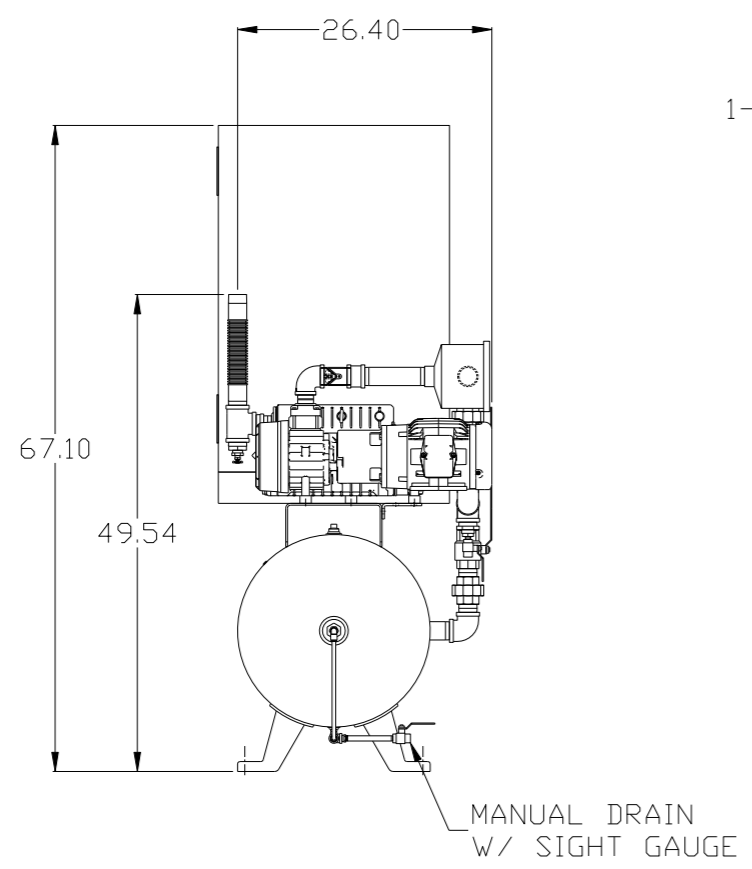
NOTE:  
A 1/4 INCH VENT PLUG IS  
LOCATED IN THE FILTER HOUSING.

LEGEND	
	TEMP. SWITCH
	AIR FILTER
	BALL VALVE
	VACUUM SWITCH
	CHECK VALVE
	FLEX LINE
	UNION

NOTES:  
1) TSH - TEMPERATURE SWITCH HIGH  
2) PER NFPA THE SYSTEM WILL REQUIRE A SOURCE VALVE (SUPPLIED BY OTHERS).

SYMBOL LEGEND			ADDITIONAL CONTROL REQ'D	Drawings to conform to the current revision of the following ANSI standards:	
	MINUS DRAFT		BRINELL HARDNESS	Y14.3 Multi and sectional view dsgs. Y14.5M Dimensioning and tolerancing	
TOLERANCES NOT SPECIFIED		AUTOCAD REL2008 LT	DO NOT SCALE DRAWING FOR DIMENSIONS		
.XX ±	.XXX ±	INCH	Sheet 2 of 2	SCALE 1:10	
CONFIDENTIAL DISCLOSURE This drawing is the property of POWEREX, INC. of the SCOTT FITZGER COMPANY and subject to return on demand. Its contents are confidential and must not be copied or submitted to outside parties for use or examination.					
DRAWN BY	CHECKED BY	APPROVED BY	ENGINEERING	MFG/MRKTG	
AEK	GES	DMS	RJR		
2/27/08	2/27/08	2/27/08	2/27/08	2/27/08	
MATERIAL		N/A			
PART NAME		 150 PRODUCTION DRIVE, HARRISON, OHIO 45030 Ph: 888-769-7979 FAX: (513) 367-3125			
DUPLUX VACUUM FLOW SCHEMATIC		DWG NO	VTDO153		SIZE D

REV	ZONE	REVISION	DATE	ECN	NAME	CHKD
F-1	ALL	ADDED PBMI SHEETS	11/21/11	22610	AEK	GES
G-1	2 C3.03	MOVED VACUUM SWITCH TO PUMP	4/26/12	22772	AEK	DMS
H-1	2 B5 2 ALL	ADDED SIGHT GAUGE ADDED SOURCE VALVE INFORMATION	10/10/12	22723	AEK	DMS
J-1	ALL	MADE HIGH TEMP STANDARD DN BASIC CONTROLS	1/13/14	PXEC0067	AEK	GES
K-1	1 ALL	UPDATED PUMP TO CURRENT BUILD	8/31/16	PXEC0148	AEK	DMS

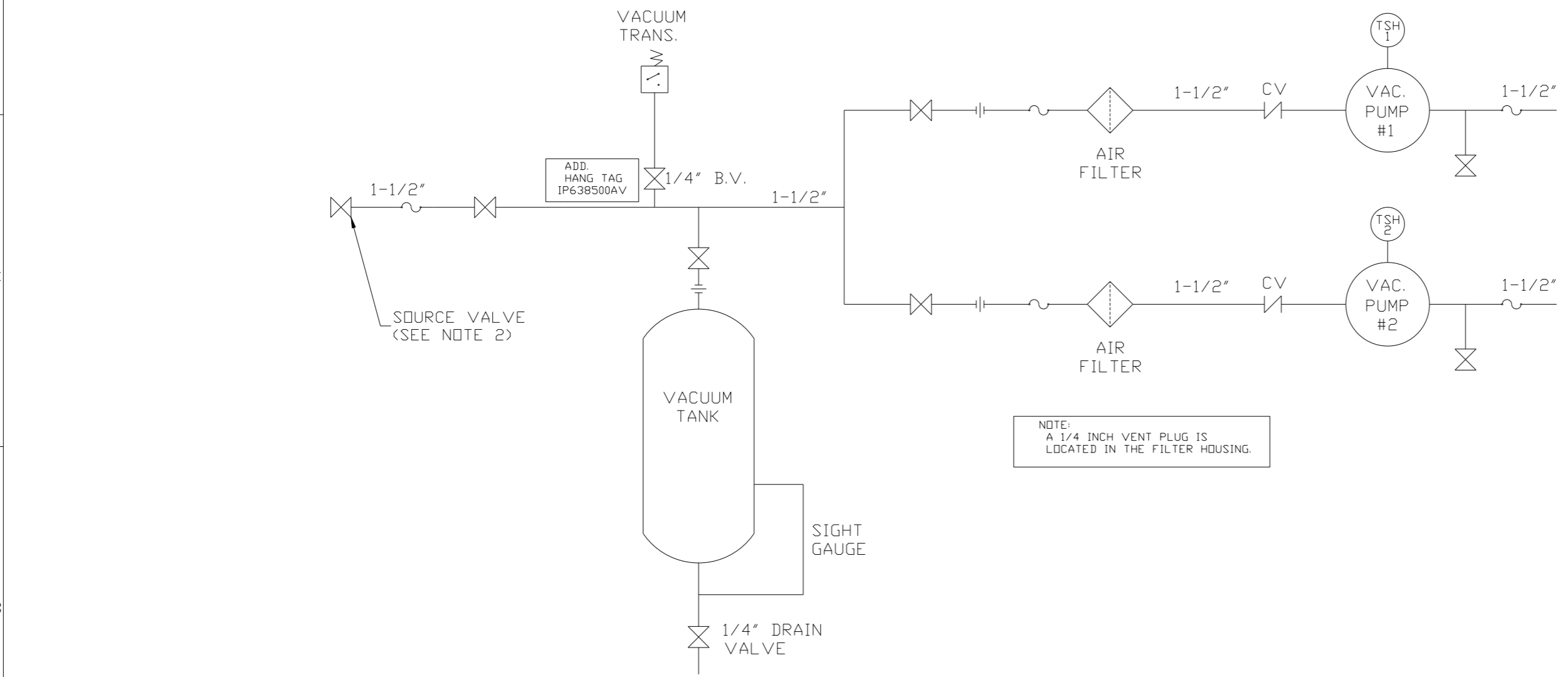


NOTE: SYSTEM DESIGNED IN COMPLIANCE WITH U.S. NFPA '99, LATEST EDITION.

NOTE: A MINIMUM OF 24" CLEARANCE IS RECOMMENDED AROUND THE ENTIRE UNIT.

<b>SYMBOL LEGEND</b> ⊖ = MINUS DRAFT ⊕ = PLUS DRAFT ⊕ = ADDITIONAL CONTROL REQ'D HRC = BRINELL HARDNESS		Drawings to conform to the current revision of the following ANSI standards: Y14.3 Multi and sectional view dgs. Y14.5M Dimensioning and tolerancing	
TOLERANCES NOT SPECIFIED .XX ± .XXX ± <math>\angle</math> (DEG) ±		AUTOCAD REL2008 LT <b>INCH</b> DO NOT SCALE DRAWING FOR DIMENSIONS Sheet 1 of 2 SCALE 1:10	
<b>CONFIDENTIAL DISCLOSURE</b> This drawing is the property of POWEREX, INC. of the SCOTT FETZER COMPANY and subject to return on demand. Its contents are confidential and must not be copied or submitted to outside parties for use or examination.			
DRAWN BY AEK		CHECKED BY GES	
11/21/11		11/21/11	
APPROVED BY DMS		APPROVED BY RJR	
11/21/11		11/21/11	
MATERIAL N/A		<b>POWEREX</b> 150 PRODUCTION DRIVE, HARRISON, OHIO 45030 Ph: 888-769-7979 FAX: (513) 367-3125	
PART NAME 1. 5HP. VACUUM 80GAL. DUPLEX		DWG NO <b>VTDO153</b> SIZE <b>D</b>	

REV	ZONE	REVISION	DATE	ECN	NAME	CHKD
F-1	ALL	ADDED P&ID SHEETS	11/21/11	22610	AEK	GES
G-1	2 (3.03)	MOVED VACUUM SWITCH TO PUMP	4/26/12	22772	AEK	DMS
H-1	2 BS 2 ALL	ADDED SIGHT GAUGE ADDED SOURCE VALVE INFORMATION	10/10/12	22723	AEK	DMS
J-1	ALL	MADE HIGH TEMP STANDARD IN BASIC CONTROLS	1/13/14	PXEC0067	AEK	GES
K-1	1 ALL	UPDATED PUMP TO CURRENT BUILD	8/31/16	PXEC0148	AEK	DMS



NOTE:  
A 1/4 INCH VENT PLUG IS  
LOCATED IN THE FILTER HOUSING.

LEGEND	
	TEMP. SWITCH
	AIR FILTER
	BALL VALVE
	VACUUM SWITCH
	CHECK VALVE
	FLEX LINE
	UNION

NOTES:  
1) TSH - TEMPERATURE SWITCH HIGH  
2) PER NFPA THE SYSTEM WILL REQUIRE A SOURCE VALVE (SUPPLIED BY OTHERS).

SYMBOL LEGEND			= ADDITIONAL CONTROL REQ'D		Drawings to conform to the current revision of the following ANSI standards: Y14.3 Multi and sectional view dgs. Y14.5M Dimensioning and tolerancing
	= MINUS DRAFT		= BRINELL HARDNESS		
TOLERANCES NOT SPECIFIED		AUTOCAD REL2008 LT	DO NOT SCALE DRAWING FOR DIMENSIONS		
.XX ±		INCH	Sheet 2 of 2	SCALE 1:10	
CONFIDENTIAL DISCLOSURE This drawing is the property of POWEREX, INC. of the SCOTT FITZGER COMPANY and subject to return on demand. Its contents are confidential and must not be copied or submitted to outside parties for use or examination.		DRAWN BY AEK	CHECKED BY GES	APPROVED BY ENGINEERING DMS	MFG/MKTG RJR
MATERIAL N/A		11/21/11	11/21/11	11/21/11	11/21/11
PART NAME DUPLEX VACUUM FLOW SCHEMATIC				SIZE D	
		DWG NO VTDO153		VT0153Bdwg	