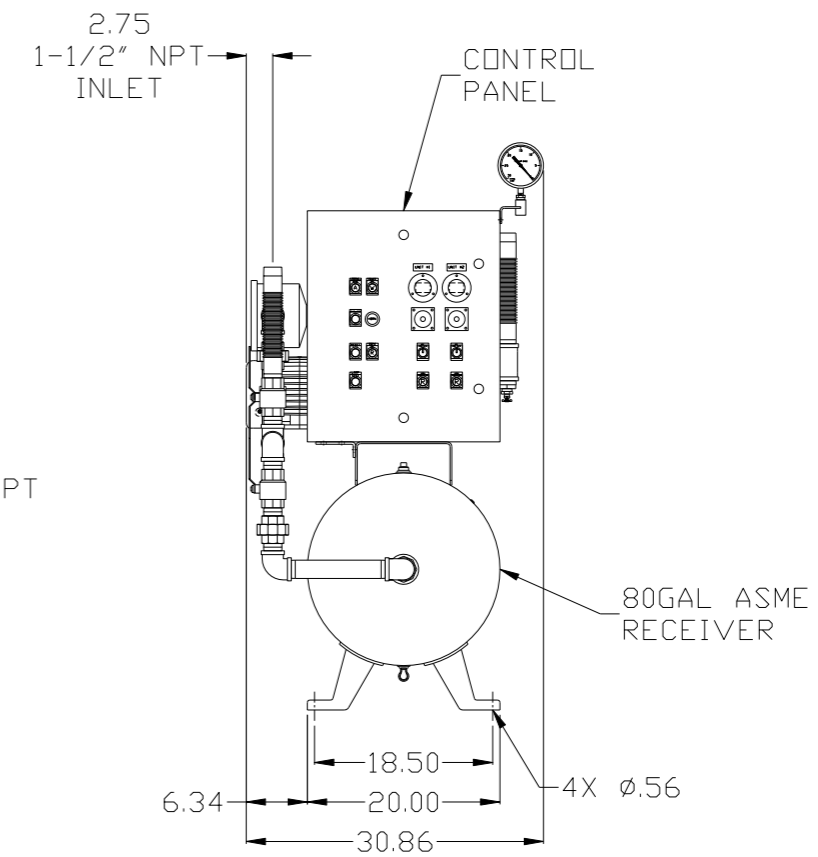
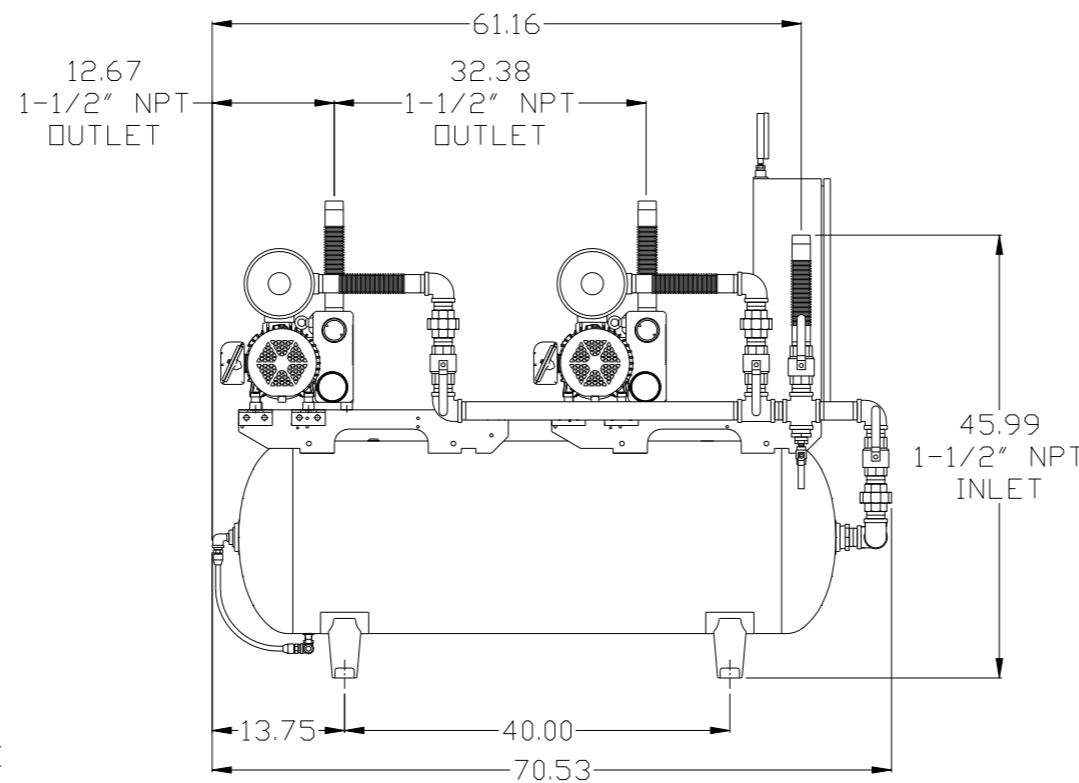
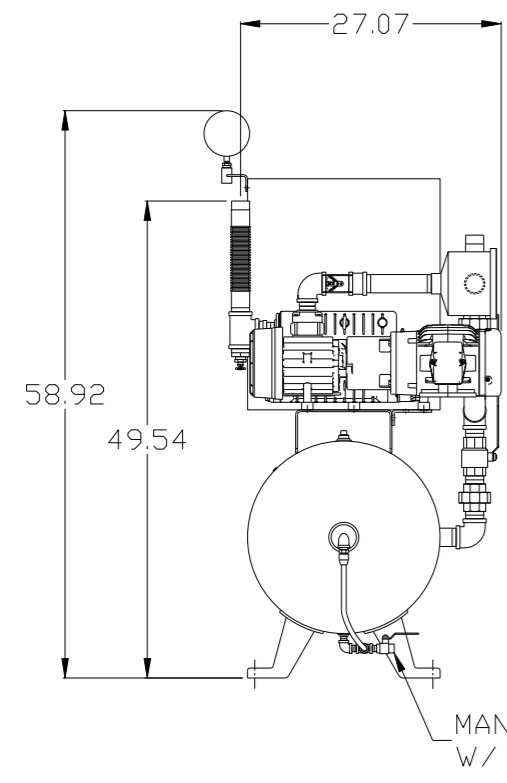
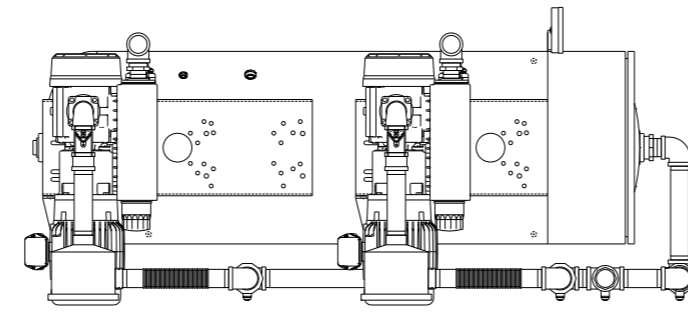


8 7 6 5 4 3 2 1

REV	ZONE	REVISION	DATE	ECN	NAME	CHKD
B-1	ALL	RELEASE FOR PRODUCTION	1/3/08	21906	AEK	DMS
C-1	ALL	ADDED HANG TAG AND ISOLATED VAC SWITCHES CHANGED DULET TO 1 1/2"	2/8/08	21907	AEK	GES
D-1	2 ALL	REMOVED VENT PLUGS, ADDED FILTER NOTE	3/6/08	21881	AEK	GES
D-2	ALL	UPDATED LAYOUT & FLOW TO CURRENT STANDARD	3/17/08	21881	AEK	GES
D-3	2 B6 1 ALL 1 ALL	REMOVED SIGHT GAUGE FROM FLOW REMOVED SPECIAL MOUNTING BRACKET, MOVED MOTOR FEET MOUNTED PUMP USING STANDARD BRACKETS	4/29/08	21881	AEK	GES
E-1	2 ALL	REMOVED LOW OIL LIGHT OPTION	7/18/08	21907	AEK	GES
E-2	1 ALL	RELOCATED PLUMBING TO MOTOR SIDE OF UNIT	9/9/08	21907	AEK	GES
F-1	1 ALL	ADJUSTED INLET LOCATION	1/12/09	22127	AEK	GES
F-2	1 ALL	ADJUSTED INLET LOCATION PER NEC	6/15/09	22127	AEK	DMS
F-3	ALL	ADDED OPTIONAL BUILD SHEET	10/28/09	22127	AEK	GES
G-1	2 C3	ADDED DRIP LEG	3/16/10	22348	AEK	DMS
H-1	ALL	ADDED PBM SHEETS REMOVED OPTIONAL BUILD SHEET	11/21/11	22546	AEK	GES
J-1	2 C3	CORRECTED HI TEMP SWITCH LOCATION	3/26/12	22772	AEK	DMS
K-1	ALL 2 B5 2 ALL	CHANGED HIGH TEMP TO STANDARD OPTION FOR BASIC CONTROLS ADDED SIGHT GAUGE ADDED SOURCE VALVE INFORMATION	2/20/14	PXEC0067	AEK	GES
L-1	ALL	ADDED TOP VIEW	10/22/15	PXEC0093	AEK	GES
M-1	1 ALL	UPDATED TO NEW RA SERIES PUMP	7/12/16	PXEC0148	AEK	GES



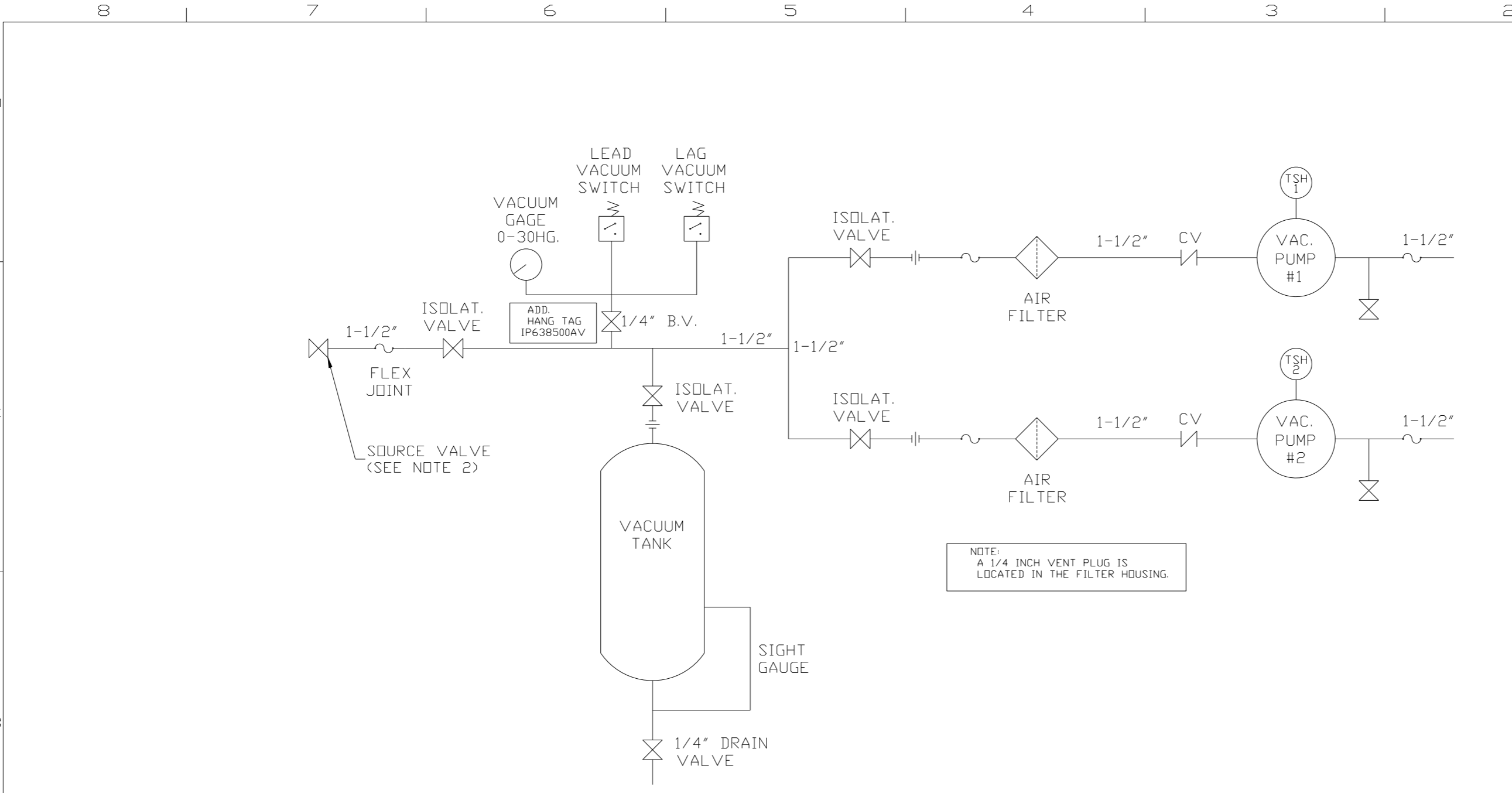
NOTE: SYSTEM DESIGNED IN COMPLIANCE WITH U.S. NFPA '99, LATEST EDITION.

NOTE: A MINIMUM OF 24" CLEARANCE IS RECOMMENDED AROUND THE ENTIRE UNIT.

SYMBOL LEGEND ⊖ = MINUS DRAFT ⊕ = PLUS DRAFT HRC = BRINELL HARDNESS		= ADDITIONAL CONTROL REQ'D = BRINELL HARDNESS		Drawings to conform to the current revision of the following ANSI standards: Y14.3 Multi and sectional view dgs. Y14.5M Dimensioning and tolerancing
TOLERANCES NOT SPECIFIED .XX ± .XXX ± \angle(DEG) ±		AUTOCAD REL2008 LT INCH		DO NOT SCALE DRAWING FOR DIMENSIONS Sheet 1 of 2 SCALE 1:10
CONFIDENTIAL DISCLOSURE This drawing is the property of POWEREX, INC. of the SCOTT FITZGER COMPANY and subject to return on demand. Its contents are confidential and must not be copied or submitted to outside parties for use or examination.				
DRAWN BY AEK		CHECKED BY DMS		APPROVED BY ENGINEERING MFG/MKTG DMS RJR
MATERIAL N/A		DATE 1/3/08		DATE 1/3/08 1/3/08 1/3/08 1/3/08
PART NAME 2HP VAC DUPLEX 80GAL TANK MOUNT		 150 PRODUCTION DRIVE, HARRISON, OHIO 45030 Ph 888-769-7979 FAX (513) 367-3125		DWG NO VTDO203 SIZE D

8 7 6 5 4 3 2 1

REV	ZONE	REVISION	DATE	ECN	NAME	CHKD
B-1	ALL	RELEASE FOR PRODUCTION	1/3/08	21906	AEK	DMS
C-1	ALL	ADDED HANG TAG AND ISOLATED VAC SWITCHES CHANGED DULET TO 1 1/2"	2/8/08	21907	AEK	GES
D-1	2 ALL	REMOVED VENT PLUGS; ADDED FILTER NOTE	3/6/08	21881	AEK	GES
D-2	ALL	UPDATED LAYOUT & FLOW TO CURRENT STANDARD	3/17/08	21881	AEK	GES
D-3	2 B6 1 ALL 1 ALL	REMOVED SIGHT GAUGE FROM FLOW REMOVED SPECIAL MOUNTING BRACKET; MOVED MOTOR FEET MOUNTED PUMP USING STANDARD BRACKETS	4/29/08	21881	AEK	GES
E-1	2 ALL	REMOVED LOW OIL LIGHT OPTION	7/18/08	21907	AEK	GES
E-2	1 ALL	RELOCATED PLUMBING TO MOTOR SIDE OF UNIT	9/9/08	21907	AEK	GES
F-1	1 ALL	ADJUSTED INLET LOCATION	1/12/09	22127	AEK	GES
F-2	1 ALL	ADJUSTED INLET LOCATION PER NEC	6/15/09	22127	AEK	DMS
F-3	ALL	ADDED OPTIONAL BUILD SHEET	10/28/09	22127	AEK	GES
G-1	2 C3	ADDED DRIP LEG	3/16/10	22348	AEK	DMS
H-1	ALL	ADDED PBM SHEETS REMOVED OPTIONAL BUILD SHEET	11/21/11	22546	AEK	GES
J-1	2 C3	CORRECTED HI TEMP SWITCH LOCATION	3/26/12	22772	AEK	DMS
K-1	ALL 2 B5 2 ALL	CHANGED HIGH TEMP TO STANDARD OPTION FOR BASIC CONTROLS ADDED SOURCE GAUGE ADDED SOURCE VALVE INFORMATION	2/20/14	PXEC0067	AEK	GES
L-1	ALL	ADDED TOP VIEW	10/22/15	PXEC0093	AEK	GES
M-1	1 ALL	UPDATED TO NEW RA SERIES PUMP	7/12/16	PXEC0148	AEK	GES



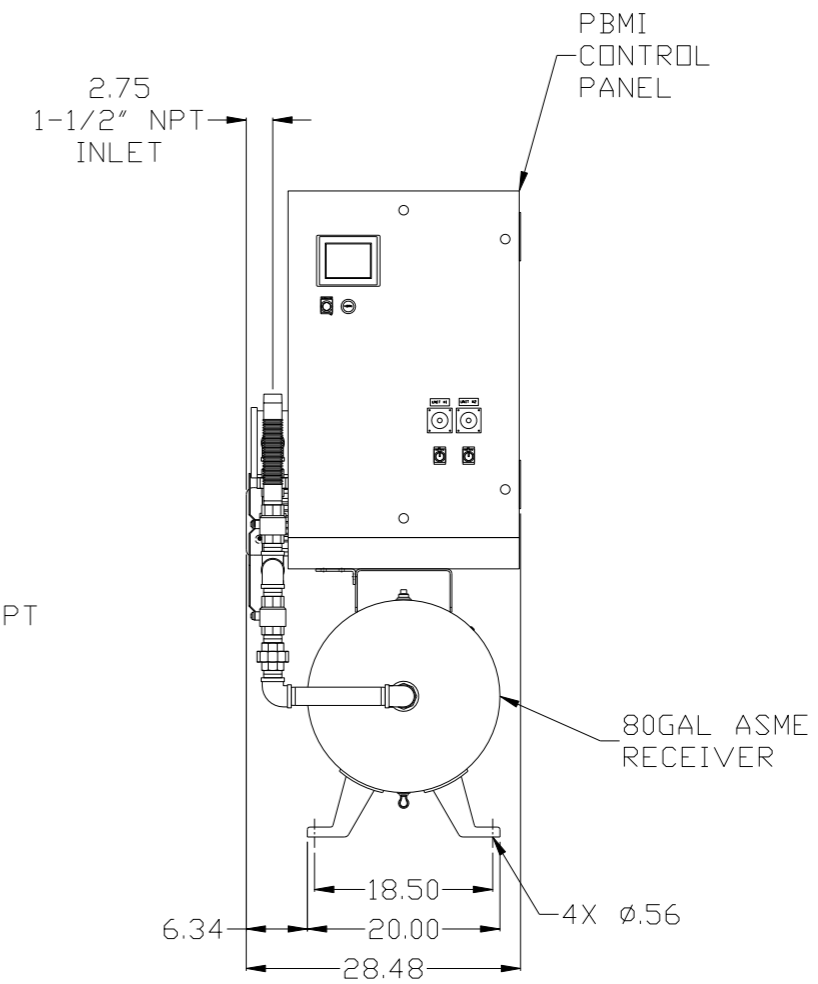
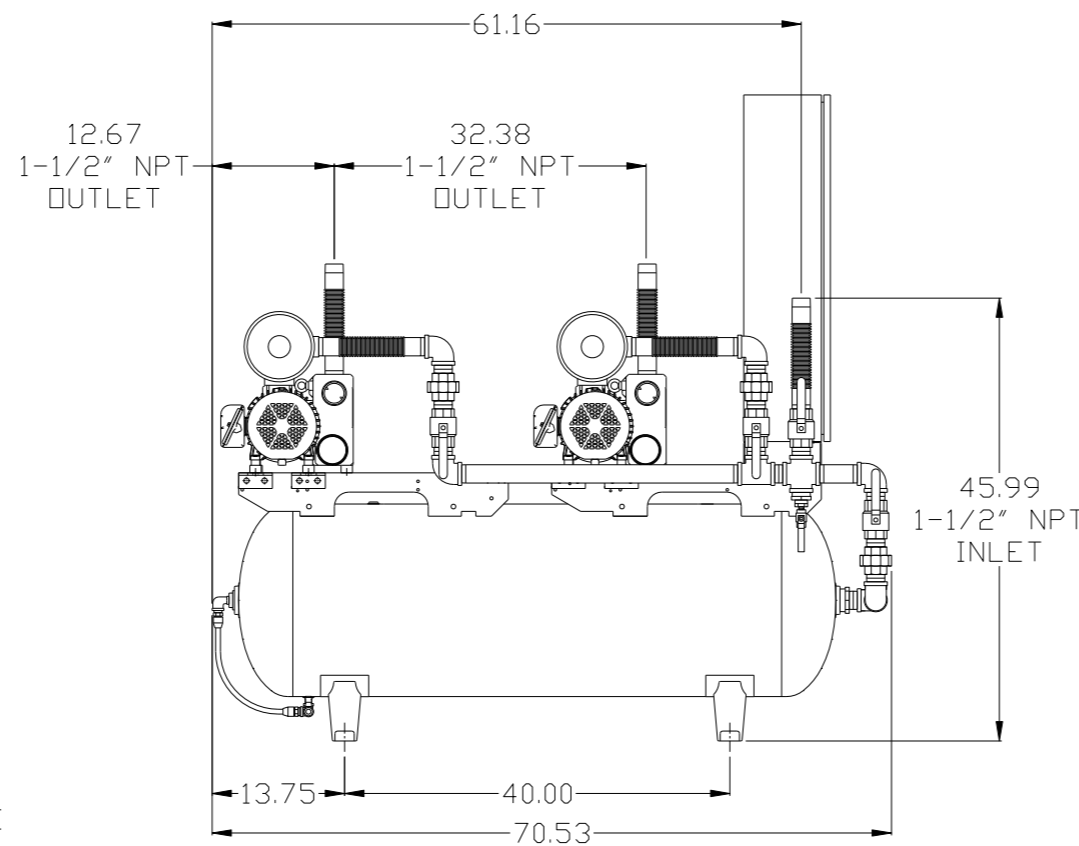
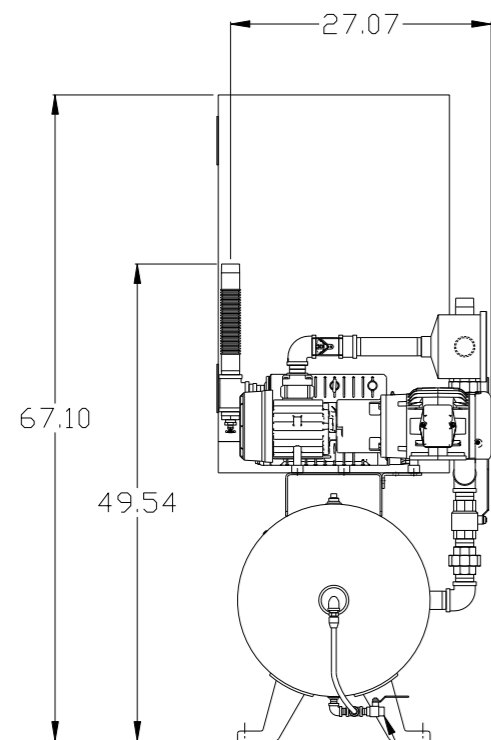
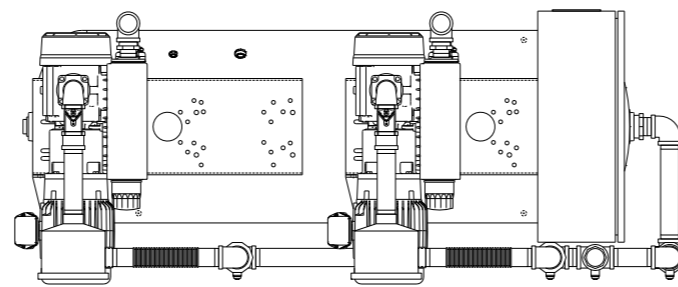
NOTE:
A 1/4 INCH VENT PLUG IS
LOCATED IN THE FILTER HOUSING.

LEGEND	
	TEMP. SWITCH
	AIR FILTER
	BALL VALVE
	VACUUM SWITCH
	CHECK VALVE
	FLEX LINE
	UNION

NOTES:
1) TSH - TEMPERATURE SWITCH HIGH
2) PER NFPA THE SYSTEM WILL REQUIRE A SOURCE VALVE (SUPPLIED BY OTHERS).

SYMBOL LEGEND			= ADDITIONAL CONTROL REQ'D		Drawings to conform to the current revision of the following ANSI standards: Y14.3 Multi and sectional view dgs. Y14.5M Dimensioning and tolerancing
	= MINUS DRAFT		= BRINELL HARDNESS		
TOLERANCES NOT SPECIFIED		AUTOCAD REL2008 LT	DO NOT SCALE DRAWING FOR DIMENSIONS		
.XX ±		INCH	Sheet 2 of 2	SCALE 1:10	
CONFIDENTIAL DISCLOSURE This drawing is the property of POWEREX, INC. of the SCOTT FITZGER COMPANY and subject to return on demand. Its contents are confidential and must not be copied or submitted to outside parties for use or examination.		DRAWN BY	CHECKED BY	APPROVED BY	ENGINEERING MFG/MRKTG
		AEK	DMS	DMS	RJR
		1/3/08	1/3/08	1/3/08	1/3/08
MATERIAL		N/A			
PART NAME		DUPLIX VACUUM FLOW SCHEMATIC			
DWG NO		VTDO203		SIZE D	

REV	ZONE	REVISION	DATE	ECN	NAME	CHKD
H-1	ALL	ADDED PBMI SHEETS REMOVED OPTIONAL BUILD SHEET	11/21/11	22546	AEK	GES
J-1	2 C3	CORRECTED HI TEMP SWITCH LOCATION	3/26/12	22772	AEK	DMS
K-1	ALL 2 B5 2 ALL	CHANGED HIGH TEMP TO STANDARD OPTION FOR BASIC CONTROLS ADDED SIGHT GAUGE ADDED SOURCE VALVE INFORMATION	2/20/14	PXEC0067	AEK	GES
L-1	ALL	ADDED TOP VIEW	10/22/15	PXEC0093	AEK	GES
M-1	1 ALL	UPDATED TO NEW RA SERIES PUMP	7/12/16	PXEC0148	AEK	GES



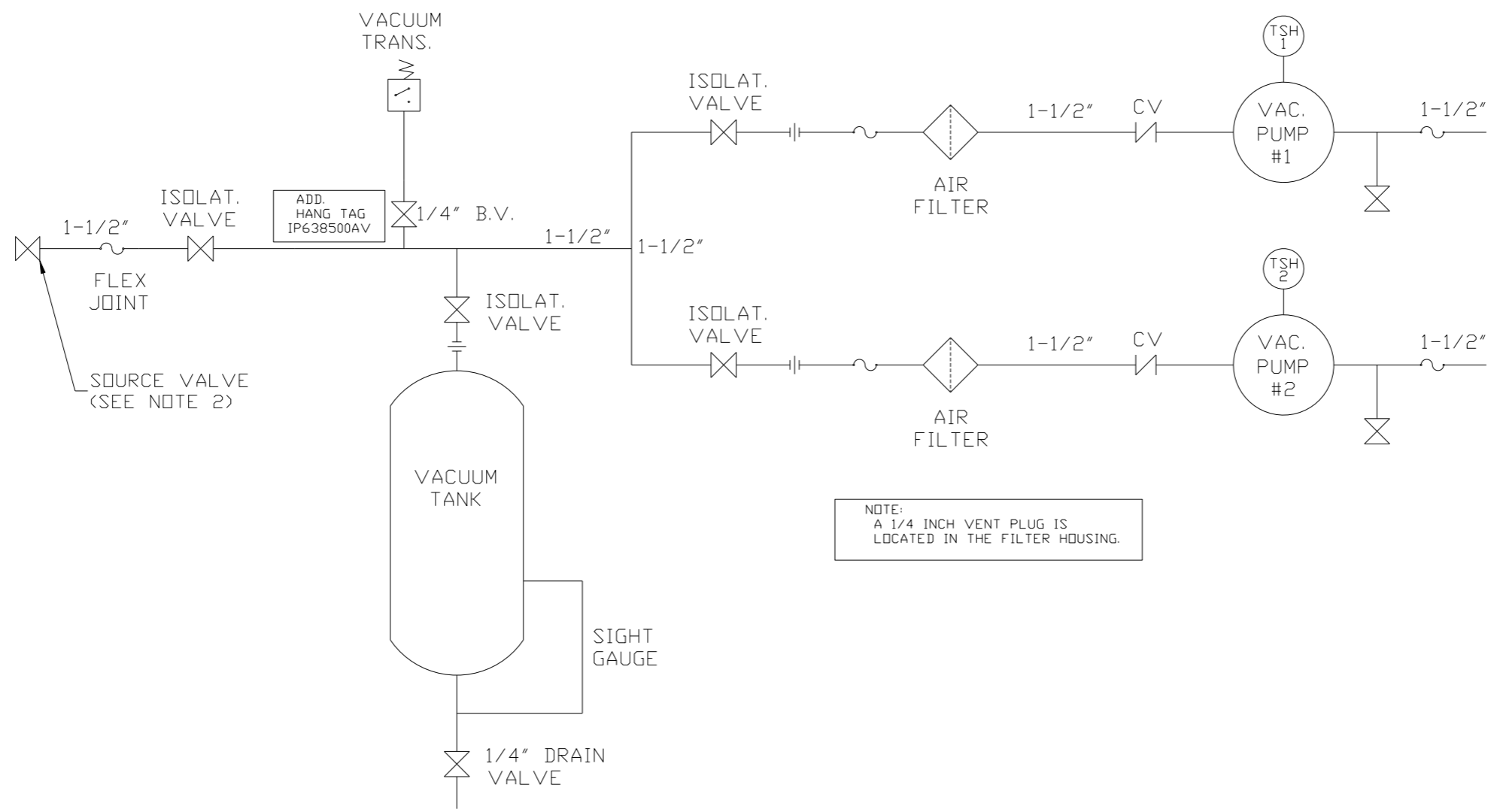
MANUAL DRAIN
W/ SIGHT GAUGE

NOTE: SYSTEM DESIGNED IN
COMPLIANCE WITH U.S. NFPA '99,
LATEST EDITION.

NOTE: A MINIMUM OF 24\"/>

SYMBOL LEGEND ⊖ = MINUS DRAFT ⊕ = PLUS DRAFT ⊕ = BRINELL HARDNESS		= ADDITIONAL CONTROL REQ'D = BRINELL HARDNESS		Drawings to conform to the current revision of the following ANSI standards: Y14.3 Multi and sectional view dgs. Y14.5M Dimensioning and tolerancing	
TOLERANCES NOT SPECIFIED .XX ± .XXX ± <<DEG> ±		AUTOCAD REL2008 LT INCH		DO NOT SCALE DRAWING FOR DIMENSIONS Sheet 1 of 2 SCALE 1:10	
CONFIDENTIAL DISCLOSURE This drawing is the property of POWEREX, INC. of the SCOTT FITZGER COMPANY and subject to return on demand. Its contents are confidential and must not be copied or submitted to outside parties for use or examination.					
DRAWN BY AEK		CHECKED BY GES		APPROVED BY ENGINEERING MFG/MKTG DMS RJR	
11/21/11		11/21/11		11/21/11 11/21/11	
MATERIAL N/A		POWEREX 150 PRODUCTION DRIVE, HARRISON, OHIO 45030 Ph: 888-769-7979 FAX: (513) 367-3125		SIZE VTDO203 D	

REV	ZONE	REVISION	DATE	ECN	NAME	CHKD
H-1	ALL	ADDED P&MI SHEETS REMOVED OPTIONAL BUILD SHEET	11/21/11	22546	AEK	GES
J-1	2 C3	CORRECTED HI TEMP SWITCH LOCATION	3/26/12	22772	AEK	DMS
K-1	ALL 2 B5 2 ALL	CHANGED HIGH TEMP TO STANDARD OPTION FOR BASIC CONTROLS ADDED SIGHT GAUGE ADDED SOURCE VALVE INFORMATION	2/20/14	PXEC0067	AEK	GES
L-1	ALL	ADDED TOP VIEW	10/22/15	PXEC0093	AEK	GES
M-1	1 ALL	UPDATED TO NEW RA SERIES PUMP	7/12/16	PXEC0148	AEK	GES



NOTE:
A 1/4 INCH VENT PLUG IS
LOCATED IN THE FILTER HOUSING.

LEGEND

	TEMP. SWITCH		VACUUM SWITCH
	AIR FILTER		CHECK VALVE
	BALL VALVE		FLEX LINE
			UNION

NOTES:
1) TSH - TEMPERATURE SWITCH HIGH
2) PER NFPA THE SYSTEM WILL REQUIRE A SOURCE VALVE (SUPPLIED BY OTHERS).

SYMBOL LEGEND			ADDITIONAL CONTROL REQ'D	Drawings to conform to the current revision of the following ANSI standards:	
	MINUS DRAFT		BRINELL HARDNESS	Y14.3 Multi and sectional view dgs. Y14.5M Dimensioning and tolerancing	
TOLERANCES NOT SPECIFIED		AUTOCAD REL2008 LT	DO NOT SCALE DRAWING FOR DIMENSIONS		
.XX ±	.XXX ±	<DEG> ±	INCH	Sheet 2 of 2	SCALE 1:10
CONFIDENTIAL DISCLOSURE This drawing is the property of POWEREX, INC. of the SCOTT FITZGER COMPANY and subject to return on demand. Its contents are confidential and must not be copied or submitted to outside parties for use or examination.					
DRAWN BY	CHECKED BY	APPROVED BY	MFG/MRKTG		
AEK	GES	DMS	RJR		
11/21/11	11/21/11	11/21/11	11/21/11		
MATERIAL			N/A		
PART NAME			DUPLX VACUUM FLOW SCHEMATIC		
DWG NO			VTDO203		
SIZE			D		