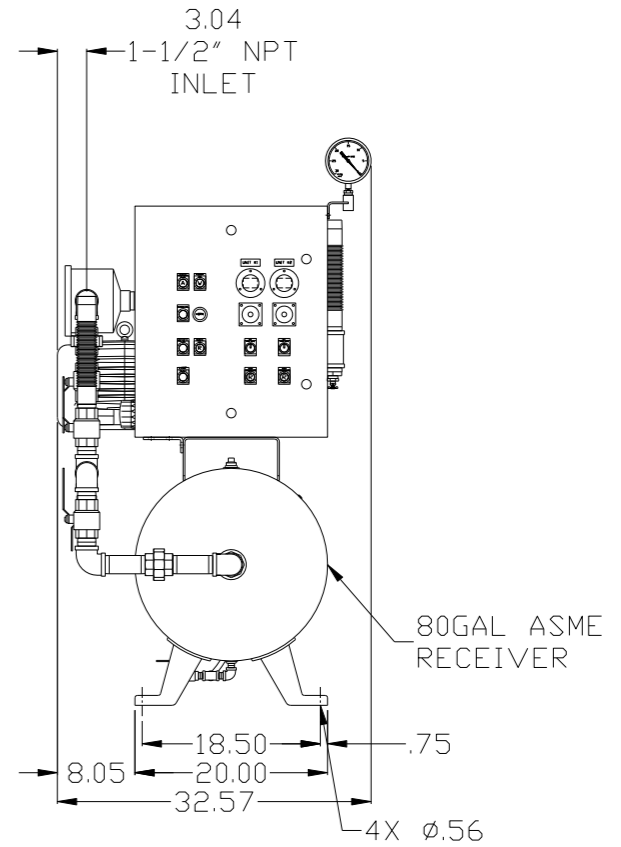
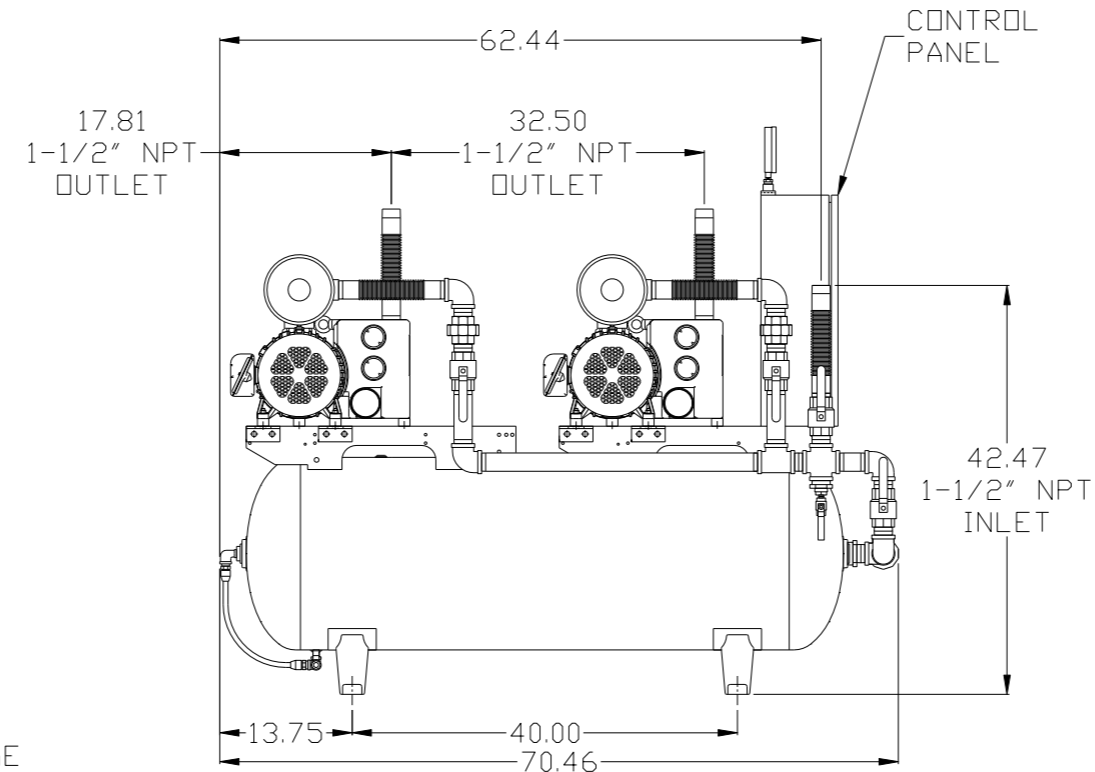
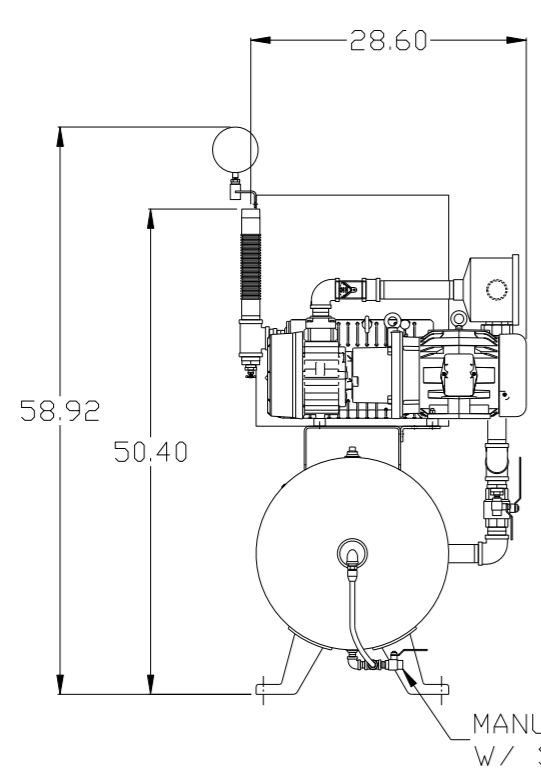


8 7 6 5 4 3 2 1

REV	ZONE	REVISION	DATE	ECN	NAME	CHKD
B-1	ALL	RELEASE FOR PRODUCTION	2/8/08	21881	AEK	GES
B-2	ALL	UPDATED LAYOUT & FLOW TO CURRENT STANDARD	3/17/08	21881	AEK	GES
B-3	2 B6 1 ALL	REMOVED SIGHT GAUGE FROM FLOW MOUNTED SPECIAL MOUNTING BRACKET, MOVED MOTOR FEET MOUNTED PUMP USING STANDARD BRACKETS	4/29/08	21881	AEK	GES
C-1	2 ALL	REMOVED LOW OIL LIGHT OPTION	7/22/08	21907	AEK	GES
C-2	1 ALL	MOVED INLET PLUMBING TO MOTOR SIDE OF PUMPS	9/11/08	21907	AEK	GES
D-1	1 ALL	RELOCATED SYSTEM INLET PER PRODUCTION REQUEST	4/15/09	22127	AEK	GES
E-1	1 ALL	REMOVED VACUUM SWITCHES FROM CONTROL PANEL	12/29/09	22127	AEK	JA
F-1	2 C3	ADDED DRIP LEG	3/10/10	22348	AEK	DMS
G-1	ALL	ADDED PBM SHEETS	11/21/11	22610	AEK	GES
H-1	2 C3	MOVED HIGH TEMP PROBE TO PUMP	7/25/12	22772	AEK	DMS
J-1	2 B5 2 ALL	ADDED SIGHT GAUGE ADDED SOURCE VALVE INFORMATION	11/27/12	22723	AEK	DMS
K-1	ALL	CHANGED HIGH TEMP TO STANDARD OPTION FOR BASIC CONTROLS	7/23/13	PXEC0048	AEK	GES
L-1	1 ALL	UPDATED TO NEW RA SERIES PUMP	6/30/16	PXEC0148	AEK	GES



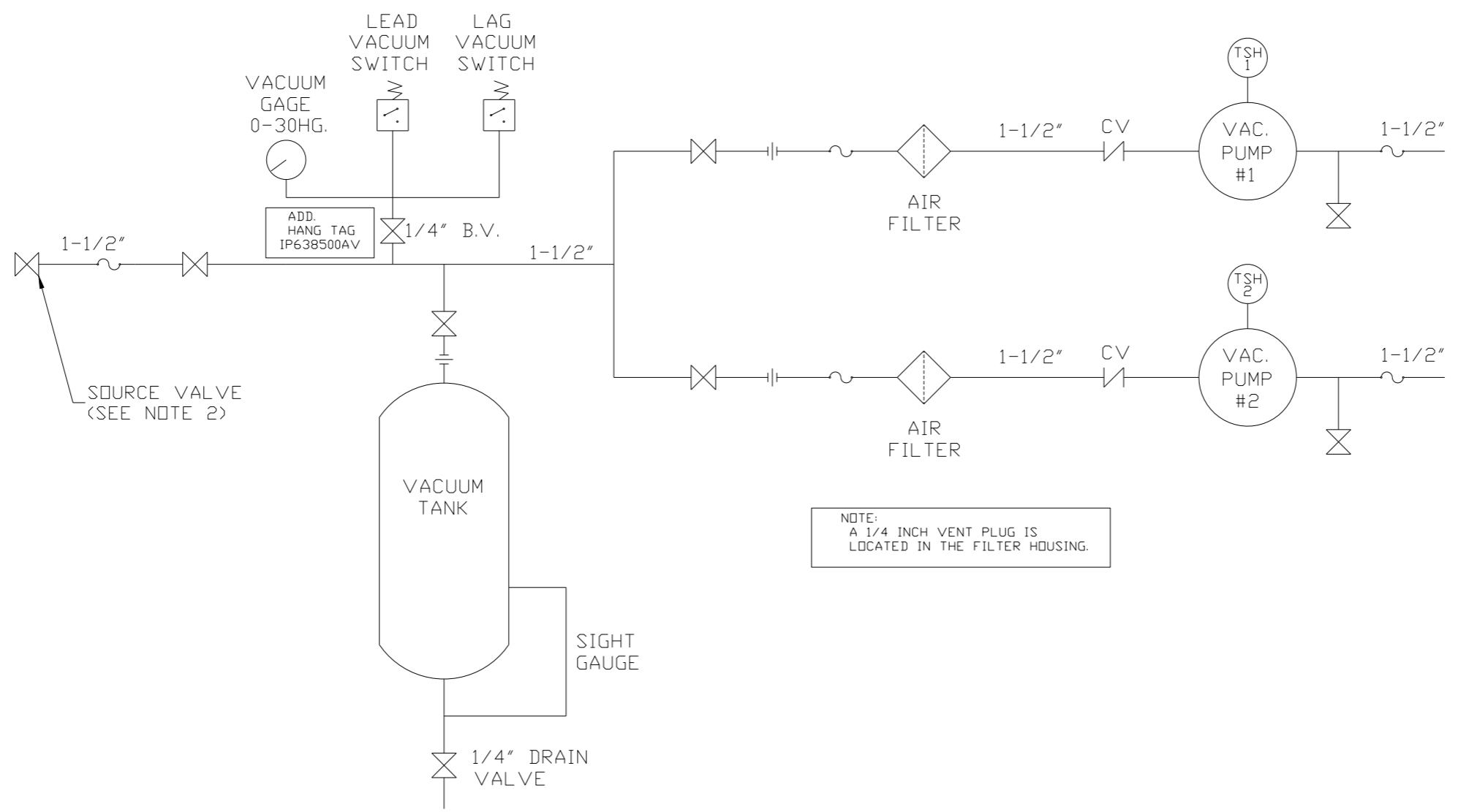
NOTE: SYSTEM DESIGNED IN COMPLIANCE WITH U.S. NFPA '99, LATEST EDITION.

NOTE: A MINIMUM OF 24" CLEARANCE IS RECOMMENDED AROUND THE ENTIRE UNIT.

SYMBOL LEGEND ⊖ = MINUS DRAFT ⊕ = PLUS DRAFT ⊕ = ADDITIONAL CONTROL REQ'D HRC = BRINELL HARDNESS		Drawings to conform to the current revision of the following ANSI standards: Y14.3 Multi and sectional view dgs. Y14.5M Dimensioning and tolerancing	
TOLERANCES NOT SPECIFIED .XX ± .XXX ± \angle (DEG.) ±		AUTOCAD REL2008 LT INCH	
CONFIDENTIAL DISCLOSURE This drawing is the property of POWEREX, INC. of the SCOTT FITZGER COMPANY and subject to return on demand. Its contents are confidential and must not be copied or submitted to outside parties for use or examination.		DO NOT SCALE DRAWING FOR DIMENSIONS Sheet 1 of 2 SCALE 1:10	
DRAWN BY: AEK CHECKED BY: GES APPROVED BY: ENGINEERING: DMS, MFG/MRKTG: RJR 2/8/08 2/8/08 2/8/08 2/8/08		POWEREX 150 PRODUCTION DRIVE, HARRISON, OHIO 45030 Ph: 888-769-7979 FAX: (513) 367-3125	
MATERIAL: N/A PART NAME: 3HP. VACUUM 80GAL. DUPLEX		DWG NO: VTDO303 SIZE: D	

8 7 6 5 4 3 2 1

REV	ZONE	REVISION	DATE	ECN	NAME	CHKD
B-1	ALL	RELEASE FOR PRODUCTION	2/8/08	21881	AEK	GES
B-2	ALL	UPDATED LAYOUT & FLOW TO CURRENT STANDARD	3/17/08	21881	AEK	GES
B-3	2 B6 1 ALL	REMOVED SIGHT GAUGE FROM FLOW MOUNTED SPECIAL MOUNTING BRACKET; MOVED MOTOR FEET MOUNTED PUMP USING STANDARD BRACKETS	4/29/08	21881	AEK	GES
C-1	2 ALL	REMOVED LOW OIL LIGHT OPTION	7/22/08	21907	AEK	GES
C-2	1 ALL	MOVED INLET PLUMBING TO MOTOR SIDE OF PUMPS	9/11/08	21907	AEK	GES
D-1	1 ALL	RELOCATED SYSTEM INLET PER PRODUCTION REQUEST	4/15/09	22127	AEK	GES
E-1	1 ALL	REMOVED VACUUM SWITCHES FROM CONTROL PANEL	12/29/09	22127	AEK	JA
F-1	2 C3	ADDED DRIP LEG	3/10/10	22348	AEK	DMS
G-1	ALL	ADDED PBM SHEETS	11/21/11	22610	AEK	GES
H-1	2 C3	MOVED HIGH TEMP PROBE TO PUMP	7/25/12	22772	AEK	DMS
J-1	2 B5 2 ALL	ADDED SIGHT GAUGE ADDED SOURCE VALVE INFORMATION	11/27/12	22723	AEK	DMS
K-1	ALL	CHANGED HIGH TEMP TO STANDARD OPTION FOR BASIC CONTROLS	7/23/13	PXEC0048	AEK	GES
L-1	1 ALL	UPDATED TO NEW RA SERIES PUMP	6/30/16	PXEC0148	AEK	GES



NOTE:
A 1/4 INCH VENT PLUG IS
LOCATED IN THE FILTER HOUSING.

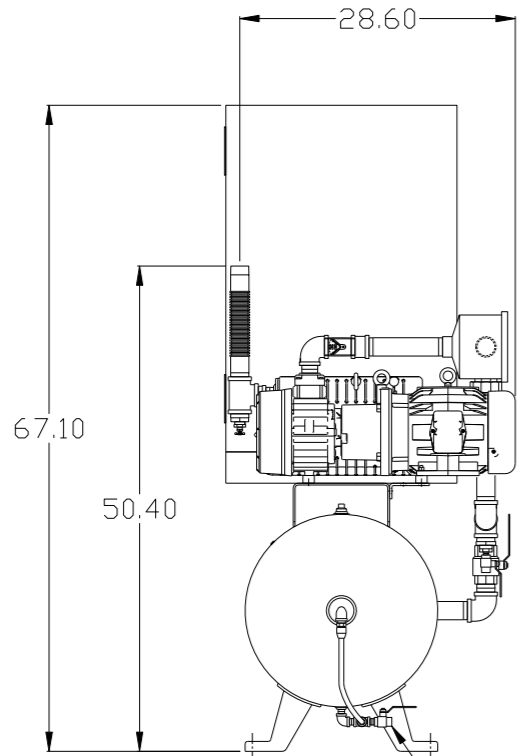
NOTES:
1) TSH - TEMPERATURE SWITCH HIGH
2) PER NFPA THE SYSTEM WILL REQUIRE A SOURCE VALVE (SUPPLIED BY OTHERS).

LEGEND	
	TEMP. SWITCH
	AIR FILTER
	BALL VALVE
	VACUUM SWITCH
	CHECK VALVE
	FLEX LINE
	UNION

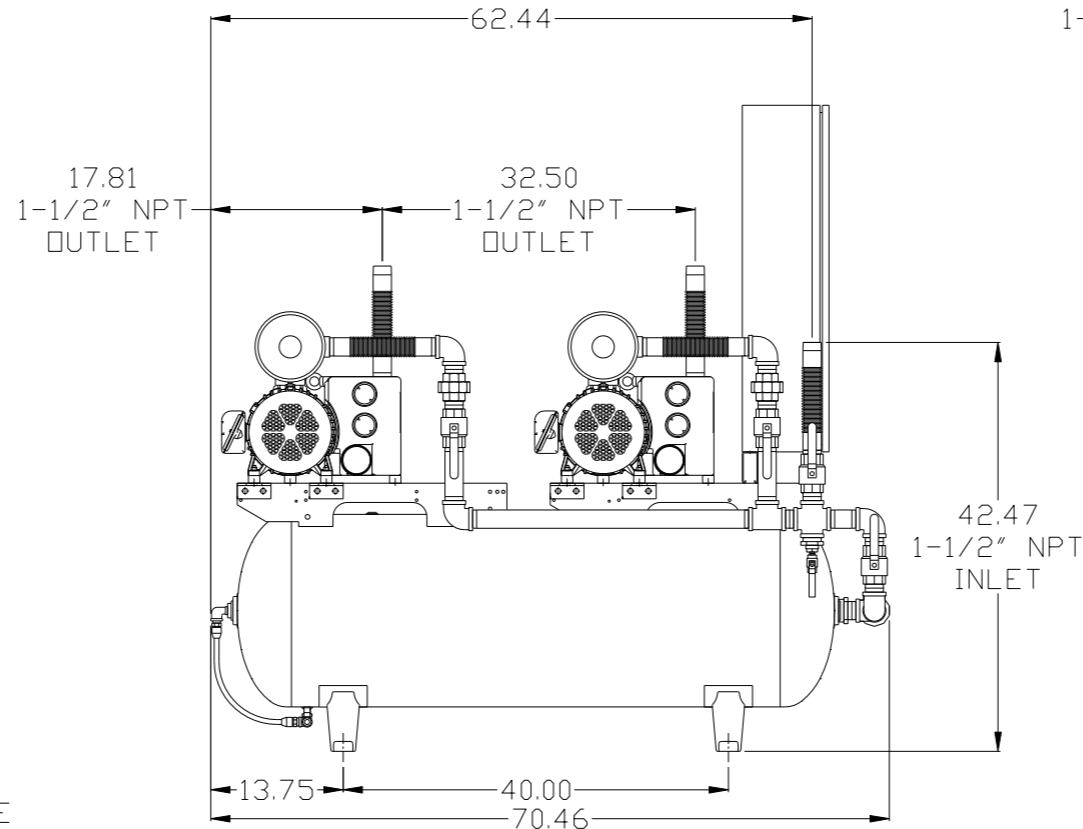
SYMBOL LEGEND			= ADDITIONAL CONTROL REQ'D	Drawings to conform to the current revision of the following ANSI standards:
	= MINUS DRAFT		= BRINELL HARDNESS	Y14.3 Multi and sectional view dgs. Y14.5M Dimensioning and tolerancing
TOLERANCES NOT SPECIFIED		AUTOCAD REL2008 LT	DO NOT SCALE DRAWING FOR DIMENSIONS	
.XX ±	.XXX ±	INCH	Sheet 2 of 2	SCALE 1:10
CONFIDENTIAL DISCLOSURE This drawing is the property of POWEREX, INC. of the SCOTT FITZGER COMPANY and subject to return on demand. Its contents are confidential and must not be copied or submitted to outside parties for use or examination.				
DRAWN BY	CHECKED BY	APPROVED BY	ENGINEERING	MFG/MRKTG
AEK	GES	DMS	RJR	
2/8/08	2/8/08	2/8/08	2/8/08	2/8/08
MATERIAL		N/A		
PART NAME		VACUUM TANKMOUNT DUPLX SCHEMATIC		
DWG NO		VTDO303		
SIZE		D		

8 7 6 5 4 3 2 1

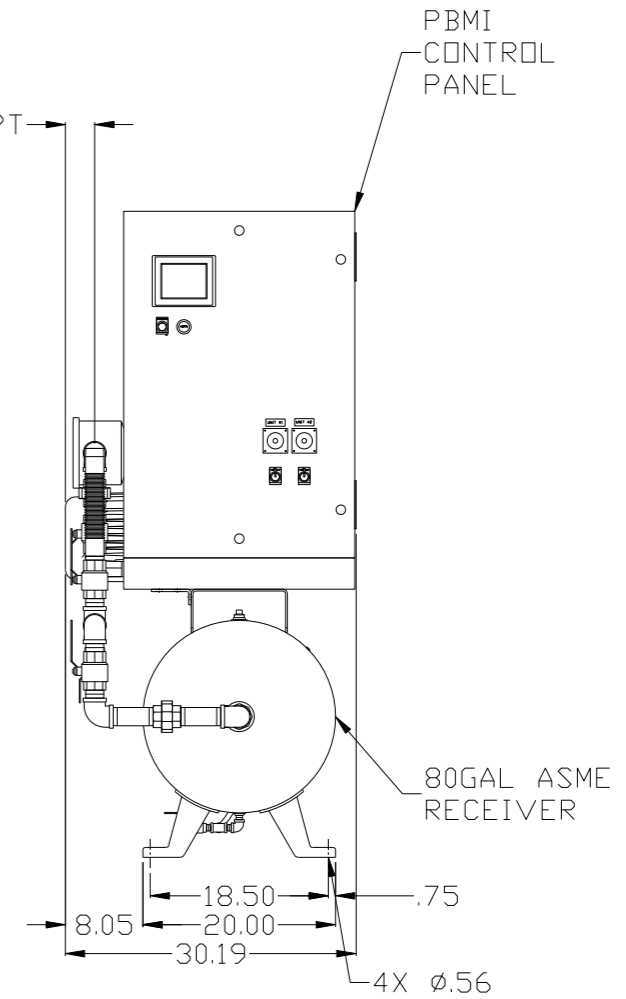
REV	ZONE	REVISION	DATE	ECN	NAME	CHKD
G-1	ALL	ADDED PBMI SHEETS	11/21/11	22610	AEK	GES
H-1	2 C3	MOVED HIGH TEMP PROBE TO PUMP	7/25/12	22772	AEK	DMS
J-1	2 B5 2 ALL	ADDED SIGHT GAUGE ADDED SOURCE VALVE INFORMATION	11/27/12	22723	AEK	DMS
K-1	ALL	CHANGED HIGH TEMP TO STANDARD OPTION FOR BASIC CONTROLS	7/23/13	PXEC0048	AEK	GES
L-1	1 ALL	UPDATED TO NEW RA SERIES PUMP	6/30/16	PXEC0048	AEK	GES



MANUAL DRAIN
W/ SIGHT GAUGE



3.04
1-1/2" NPT
INLET



PBMI
CONTROL
PANEL

80GAL ASME
RECEIVER

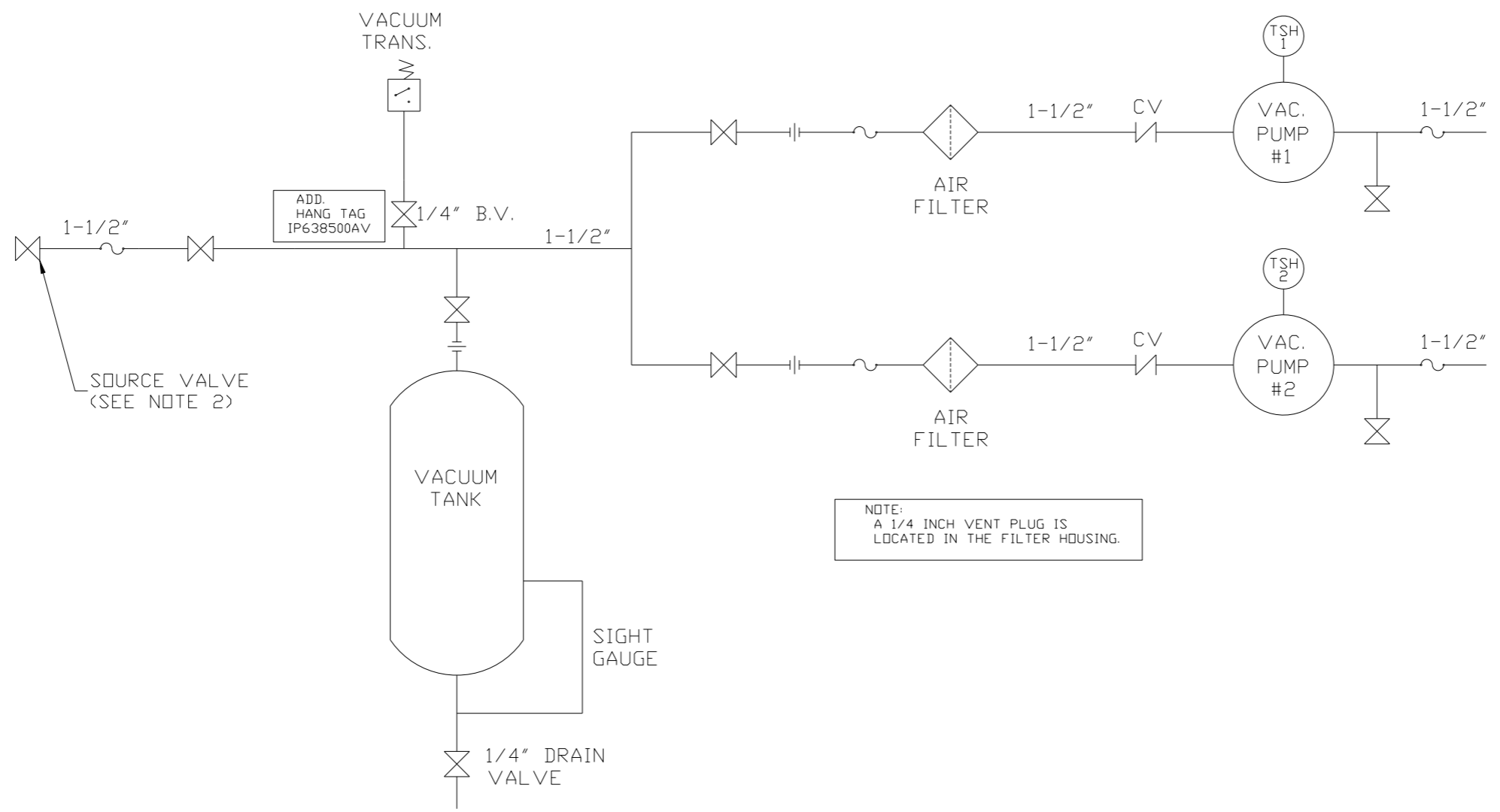
NOTE: SYSTEM DESIGNED IN
COMPLIANCE WITH U.S. NFPA '99,
LATEST EDITION.

NOTE: A MINIMUM OF 24" CLEARANCE IS
RECOMMENDED AROUND THE ENTIRE UNIT.

SYMBOL LEGEND ⊖ = MINUS DRAFT ⊕ = PLUS DRAFT ⊕ = ADDITIONAL CONTROL REQ'D HRC = BRINELL HARDNESS		Drawings to conform to the current revision of the following ANSI standards: Y14.3 Multi and sectional view dgs. Y14.5M Dimensioning and tolerancing	
TOLERANCES NOT SPECIFIED .XX ± .XXX ± <DEG> ±		AUTOCAD REL2008 LT INCH DO NOT SCALE DRAWING FOR DIMENSIONS Sheet 1 of 2 SCALE 1:10	
CONFIDENTIAL DISCLOSURE This drawing is the property of POWEREX, INC. of the SCOTT FITZGER COMPANY and subject to return on demand. Its contents are confidential and must not be copied or submitted to outside parties for use or examination.			
DRAWN BY AEK		CHECKED BY GES	
APPROVED BY DMS		ENGINEERING RJR	
11/21/11		11/21/11	
MATERIAL N/A		POWEREX 150 PRODUCTION DRIVE, HARRISON, OHIO 45030 Ph 888-769-7979 FAX (513) 367-3125	
PART NAME 3HP. VACUUM 80GAL. DUPLEX		DWG NO VTDO303 SIZE D	

8 7 6 5 4 3 2 1

REV	ZONE	REVISION	DATE	ECN	NAME	CHKD
G-1	ALL	ADDED PBM1 SHEETS	11/21/11	22610	AEK	GES
H-1	2 C3	MOVED HIGH TEMP PROBE TO PUMP	7/25/12	22772	AEK	DMS
J-1	2 B5 2 ALL	ADDED SIGHT GAUGE ADDED SOURCE VALVE INFORMATION	11/27/12	22723	AEK	DMS
K-1	ALL	CHANGED HIGH TEMP TO STANDARD OPTION FOR BASIC CONTROLS	7/23/13	PXEC0048	AEK	GES
L-1	1 ALL	UPDATED TO NEW RA SERIES PUMP	6/30/16	PXEC0148	AEK	GES



NOTE:
A 1/4 INCH VENT PLUG IS
LOCATED IN THE FILTER HOUSING.

NOTES:
1) TSH - TEMPERATURE SWITCH HIGH
2) PER NFPA THE SYSTEM WILL REQUIRE A SOURCE VALVE (SUPPLIED BY OTHERS).

LEGEND	
	TEMP. SWITCH
	AIR FILTER
	BALL VALVE
	VACUUM SWITCH
	CHECK VALVE
	FLEX LINE
	UNION

SYMBOL LEGEND			= ADDITIONAL CONTROL REQ'D	Drawings to conform to the current revision of the following ANSI standards:
	= MINUS DRAFT		= BRINELL HARDNESS	Y14.3 Multi and sectional view dgs. Y14.5M Dimensioning and tolerancing
TOLERANCES NOT SPECIFIED		AUTOCAD REL2008 LT	DO NOT SCALE DRAWING FOR DIMENSIONS	
.XX ±	.XXX ±	INCH	Sheet 2 of 2	SCALE 1:10
CONFIDENTIAL DISCLOSURE This drawing is the property of POWEREX, INC. of the SCOTT FETZER COMPANY and subject to return on demand. Its contents are confidential and must not be copied or submitted to outside parties for use or examination.				
DRAWN BY	CHECKED BY	APPROVED BY	ENGINEERING MFG/MKTG	
AEK	GES	DMS	RJR	
11/21/11	11/21/11	11/21/11	11/21/11	
MATERIAL		N/A		
PART NAME		VACUUM TANKMOUNT DUPLX SCHEMATIC		
DWG NO		VTDO303		
SIZE		D		