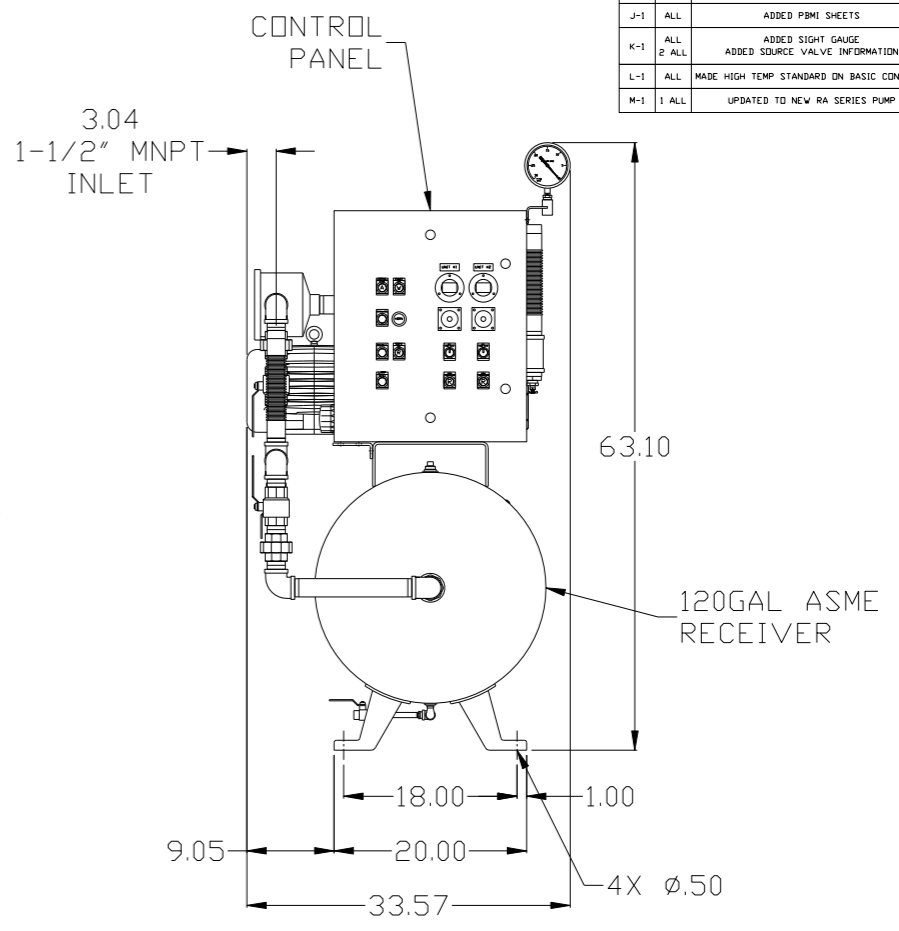
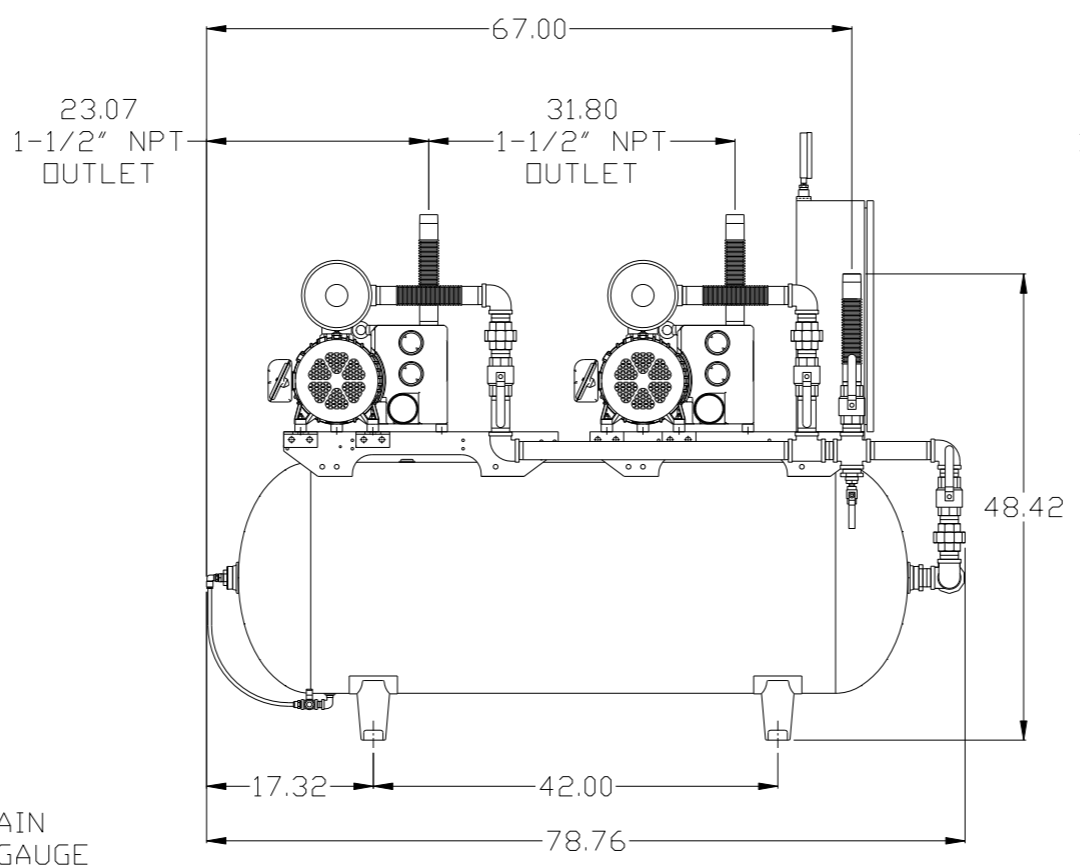
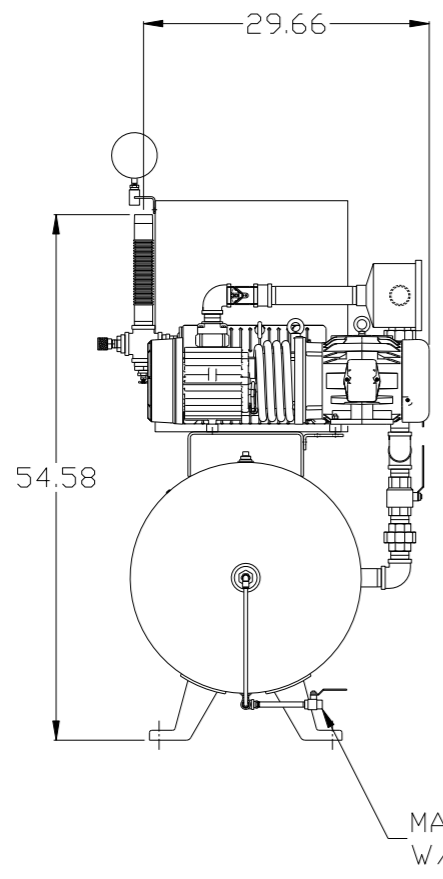


8 7 6 5 4 3 2 1

REV	ZONE	REVISION	DATE	ECN	NAME	CHKD
B-1	ALL	RELEASE FOR PRODUCTION	1/3/08	21906	AEK	DMS
C-1	2 DS 1 ALL	ADDED ISO VALVE & HANG TAG CHANGED FROM GH TANK TO STD 120 GAL	02/08/08	21907	DMS	GES
D-1	2 ALL	REMOVED VENT PLUG; ADDED FILTER NOTE	3/6/08	21881	AEK	GES
D-2	ALL	UPDATED LAYOUT & FLOW TO CURRENT STANDARD	3/17/08	21881	AEK	GES
D-3	2 B6 1 ALL 1 ALL	REMOVED SIGHT GAUGE FROM FLOW REMOVED SPECIAL MOUNTING BRACKET; MOVED MOTOR FEET MOUNTED PUMP USING STANDARD BRACKETS	4/29/08	21881	AEK	GES
E-1	ALL	MOVED INLET PLUMBING TO MOTOR SIDE REMOVED LOW OIL SWITCH OPTION	9/12/08	21907	AEK	GES
F-1	1 C4	ADDED PANEL TO LEFT VIEW	1/12/09	22127	AEK	GES
F-2	1 ALL	ADJUSTED INLET LOCATION PER NEC	8/7/09	22127	AEK	DMS
F-3	1 ALL	REMOVED VACUUM SWITCHES FROM PANEL	10/13/09	22127	AEK	GES
G-1	2 C2	ADDED DRIP LEG	3/16/10	22348	AEK	DMS
H-1	1 C8	CORRECTED PUMP CALLOUT FROM 3HP TO 5HP	1/25/11	22546	AEK	DMS
J-1	ALL	ADDED P&ID SHEETS	11/21/11	22610	AEK	GES
K-1	ALL 2 ALL	ADDED SIGHT GAUGE ADDED SOURCE VALVE INFORMATION	5/24/13	PXEC0030	AEK	GES
L-1	ALL	MADE HIGH TEMP STANDARD DN BASIC CONTROLS	7/3/14	PXEC0048	AEK	GES
M-1	1 ALL	UPDATED TO NEW RA SERIES PUMP	9/1/16	PXEC0148	AEK	GES



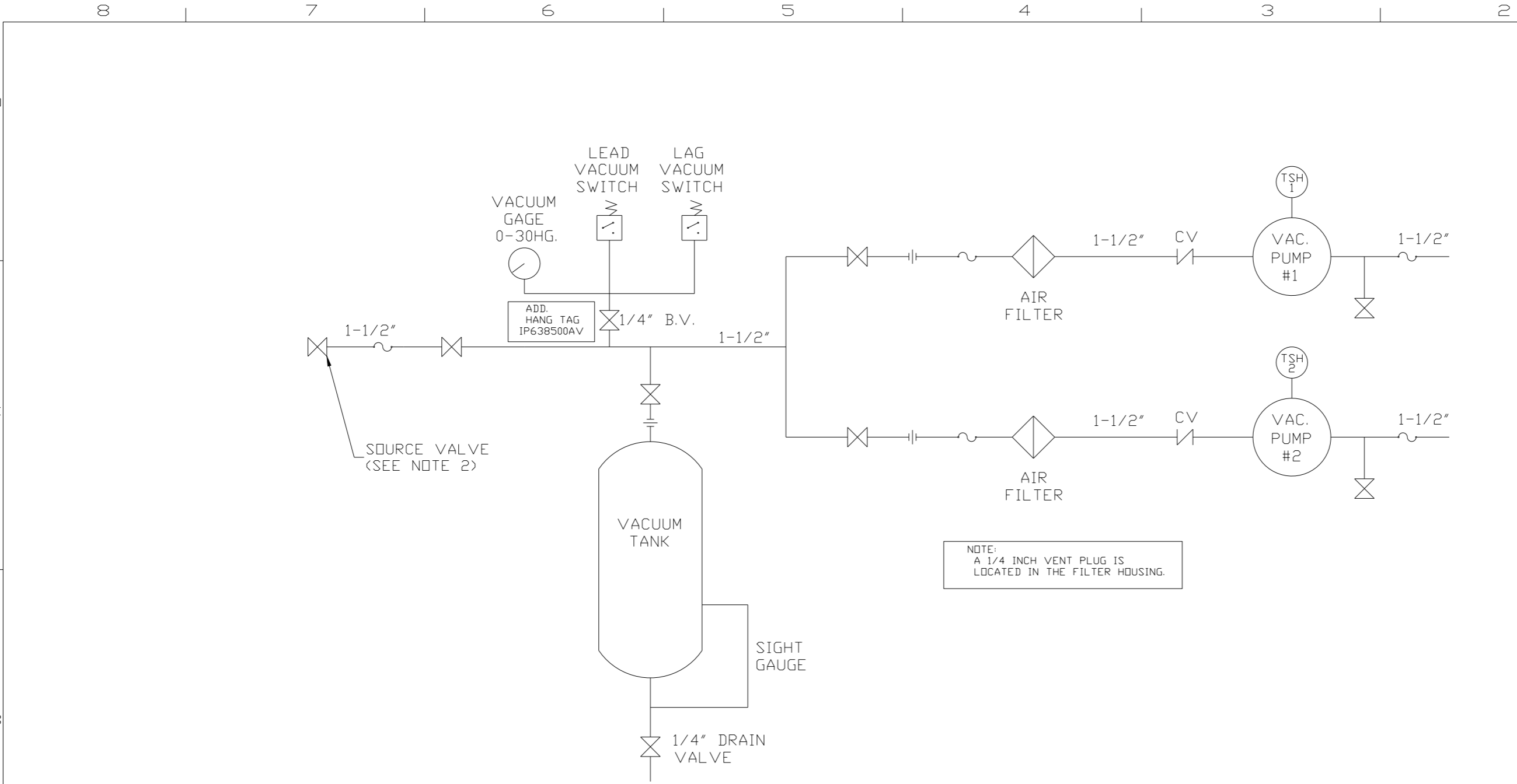
NOTE: SYSTEM DESIGNED IN COMPLIANCE WITH U.S. NFPA '99, LATEST EDITION.

NOTE: A MINIMUM OF 24" CLEARANCE IS RECOMMENDED AROUND THE ENTIRE UNIT.

SYMBOL LEGEND ⊖ = MINUS DRAFT ⊕ = PLUS DRAFT TOLERANCES NOT SPECIFIED .XX ± .XXX ± \angle (DEG) ±		= ADDITIONAL CONTROL REQ'D = BRINELL HARDNESS	Drawings to conform to the current revision of the following ANSI standards: Y14.3 Multi and sectional view dgs. Y14.5M Dimensioning and tolerancing
AUTOCAD REL2008 LT INCH		DO NOT SCALE DRAWING FOR DIMENSIONS SCALE: 1:10 Sheet 1 of 2	
CONFIDENTIAL DISCLOSURE This drawing is the property of POWEREX, INC. of the SCOTT FITZGER COMPANY and subject to return on demand. Its contents are confidential and must not be copied or submitted to outside parties for use or examination.			
DRAWN BY: AEK 1/3/08	CHECKED BY: DMS 1/3/08	APPROVED BY: DMS 1/3/08	MFG/MKTG: RJR 1/3/08
MATERIAL: N/A		 150 PRODUCTION DRIVE, HARRISON, OHIO 45030 Ph: 888-769-7979 FAX: (513) 367-3125	
PART NAME: 5HP. VACUUM 120GAL. DUPLEX		DWG NO: VTDO404	SIZE: D

8 7 6 5 4 3 2 1

REV	ZONE	REVISION	DATE	ECN	NAME	CHKD
B-1	ALL	RELEASE FOR PRODUCTION	1/3/08	21906	AEK	DMS
C-1	2 DS 1 ALL	ADDED ISO VALVE & HANG TAG CHANGED FROM GH TANK TO STD 120 GAL	02/08/08	21907	DMS	GES
D-1	2 ALL	REMOVED VENT PLUG; ADDED FILTER NOTE	3/6/08	21881	AEK	GES
D-2	ALL	UPDATED LAYOUT & FLOW TO CURRENT STANDARD	3/17/08	21881	AEK	GES
D-3	2 B6 1 ALL 1 ALL	REMOVED SIGHT GAUGE FROM FLOW REMOVED SPECIAL MOUNTING BRACKET; MOVED MOTOR FEET MOUNTED PUMP USING STANDARD BRACKETS	4/29/08	21881	AEK	GES
E-1	ALL	MOVED INLET PLUMBING TO MOTOR SIDE REMOVED LOW OIL SWITCH OPTION	9/12/08	21907	AEK	GES
F-1	1 C4	ADDED PANEL TO LEFT VIEW	1/12/09	22127	AEK	GES
F-2	1 ALL	ADJUSTED INLET LOCATION PER NEC	8/7/09	22127	AEK	DMS
F-3	1 ALL	REMOVED VACUUM SWITCHES FROM PANEL	10/13/09	22127	AEK	DMS
G-1	2 C2	ADDED DRIP LEG	3/16/10	22348	AEK	GES
H-1	1 C8	CORRECTED PUMP CALLOUT FROM 3HP TO 5HP	1/25/11	22546	AEK	DMS
J-1	ALL	ADDED P&ID SHEETS	11/21/11	22610	AEK	GES
K-1	ALL 2 ALL	ADDED SIGHT GAUGE ADDED SOURCE VALVE INFORMATION	5/24/13	PXEC0030	AEK	GES
L-1	ALL	MADE HIGH TEMP STANDARD IN BASIC CONTROLS	7/3/14	PXEC0048	AEK	GES
M-1	1 ALL	UPDATED TO NEW RA SERIES PUMP	9/1/16	PXEC0148	AEK	GES



ADD.
HANG TAG
IP638500AV

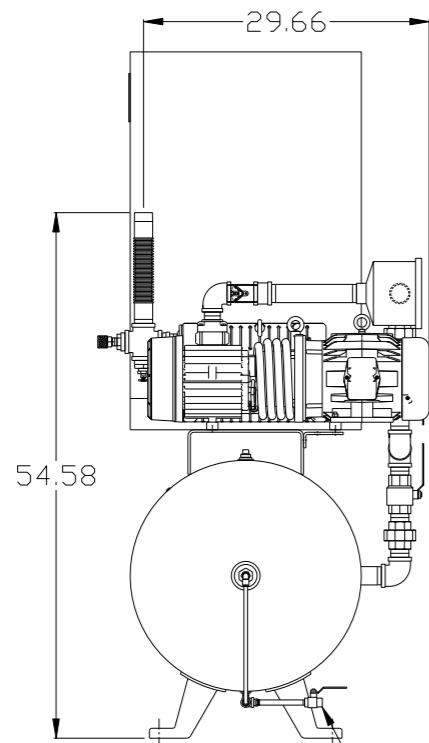
NOTE:
A 1/4 INCH VENT PLUG IS
LOCATED IN THE FILTER HOUSING.

LEGEND	
	TEMP. SWITCH
	AIR FILTER
	BALL VALVE
	VACUUM SWITCH
	CHECK VALVE
	FLEX LINE
	UNION

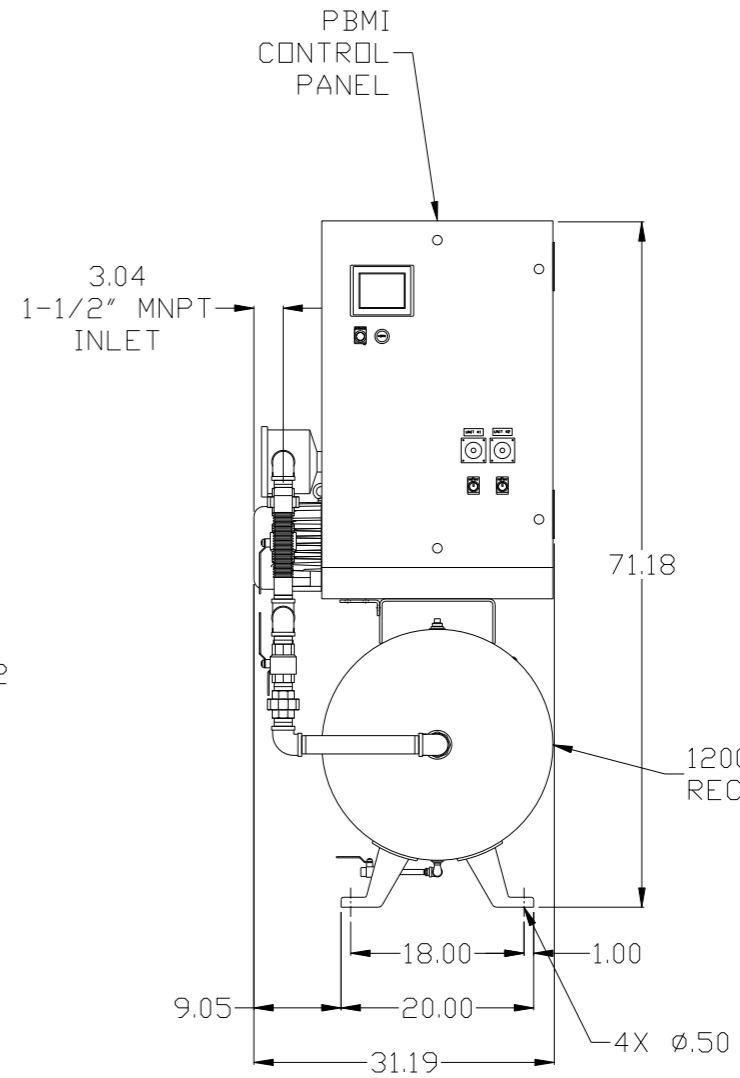
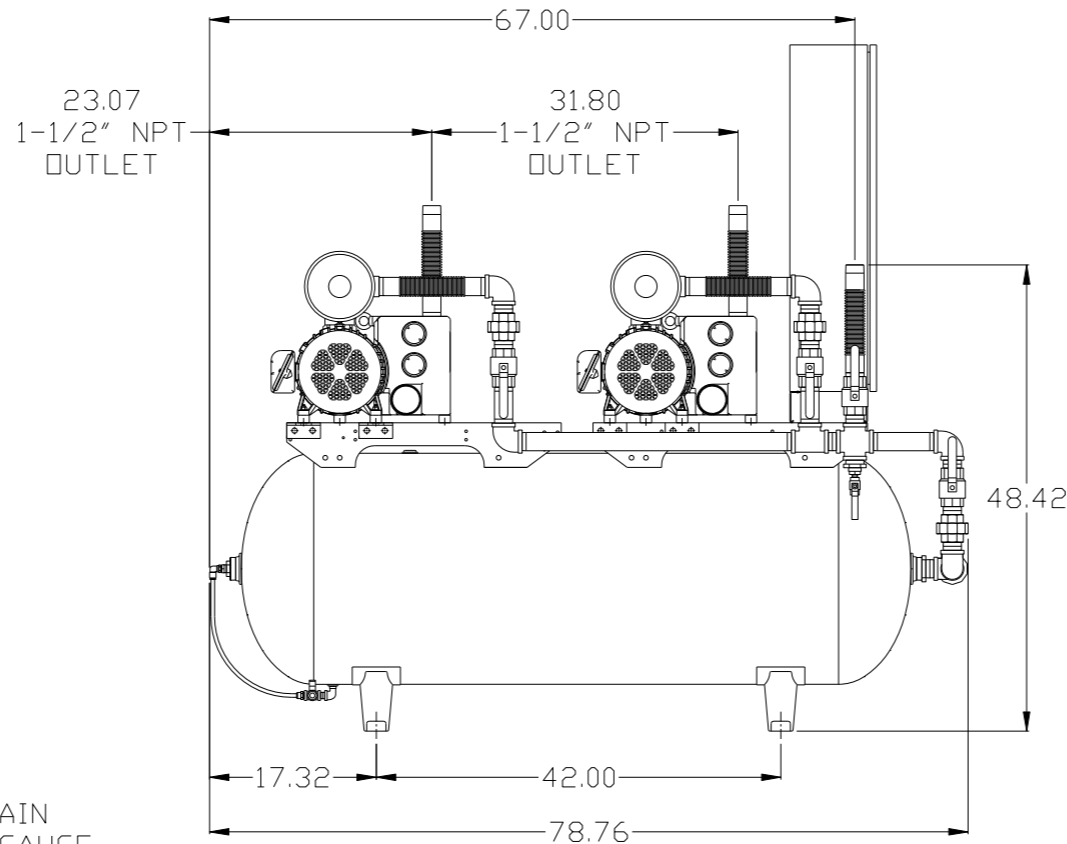
NOTES:
1) TSH - TEMPERATURE SWITCH HIGH
2) PER NFPA THE SYSTEM WILL REQUIRE A SOURCE VALVE (SUPPLIED BY OTHERS).

SYMBOL LEGEND			ADDITIONAL CONTROL REQ'D	Drawings to conform to the current revision of the following ANSI standards: Y14.3 Multi and sectional view dgs. Y14.5M Dimensioning and tolerancing
	MINUS DRAFT		BRINELL HARDNESS	
TOLERANCES NOT SPECIFIED		AUTOCAD REL2008 LT	DO NOT SCALE DRAWING FOR DIMENSIONS	
.XX ±	.XXX ±	INCH	Sheet 2 of 2	SCALE 1:10
CONFIDENTIAL DISCLOSURE This drawing is the property of POWEREX, INC. of the SCOTT FITZGER COMPANY and subject to return on demand. Its contents are confidential and must not be copied or submitted to outside parties for use or examination.		DRAWN BY AEK	CHECKED BY DMS	APPROVED BY ENGINEERING MFG/MRKTG DMS RJR
MATERIAL N/A		1/3/08	1/3/08	1/3/08 1/3/08
PART NAME DUPLEX VAC TANKMOUNT FLOW SCHEMATIC		 150 PRODUCTION DRIVE, HARRISON, OHIO 45030 Ph: 888-769-7979 FAX: (513) 367-3125		DWG NO VTDO404 SIZE D

REV	ZONE	REVISION	DATE	ECN	NAME	CHKD
J-1	ALL	ADDED PBMI SHEETS	11/21/11	22610	AEK	GES
K-1	ALL	ADDED SIGHT GAUGE	5/24/13	PXEC0030	AEK	GES
L-1	ALL	MADE HIGH TEMP STANDARD ON BASIC CONTROLS	7/3/14	PXEC0048	AEK	GES
M-1	ALL	UPDATED TO NEW RA SERIES PUMP	9/1/16	PXEC0148	AEK	GES



MANUAL DRAIN
W/ SIGHT GAUGE



PBMI
CONTROL
PANEL

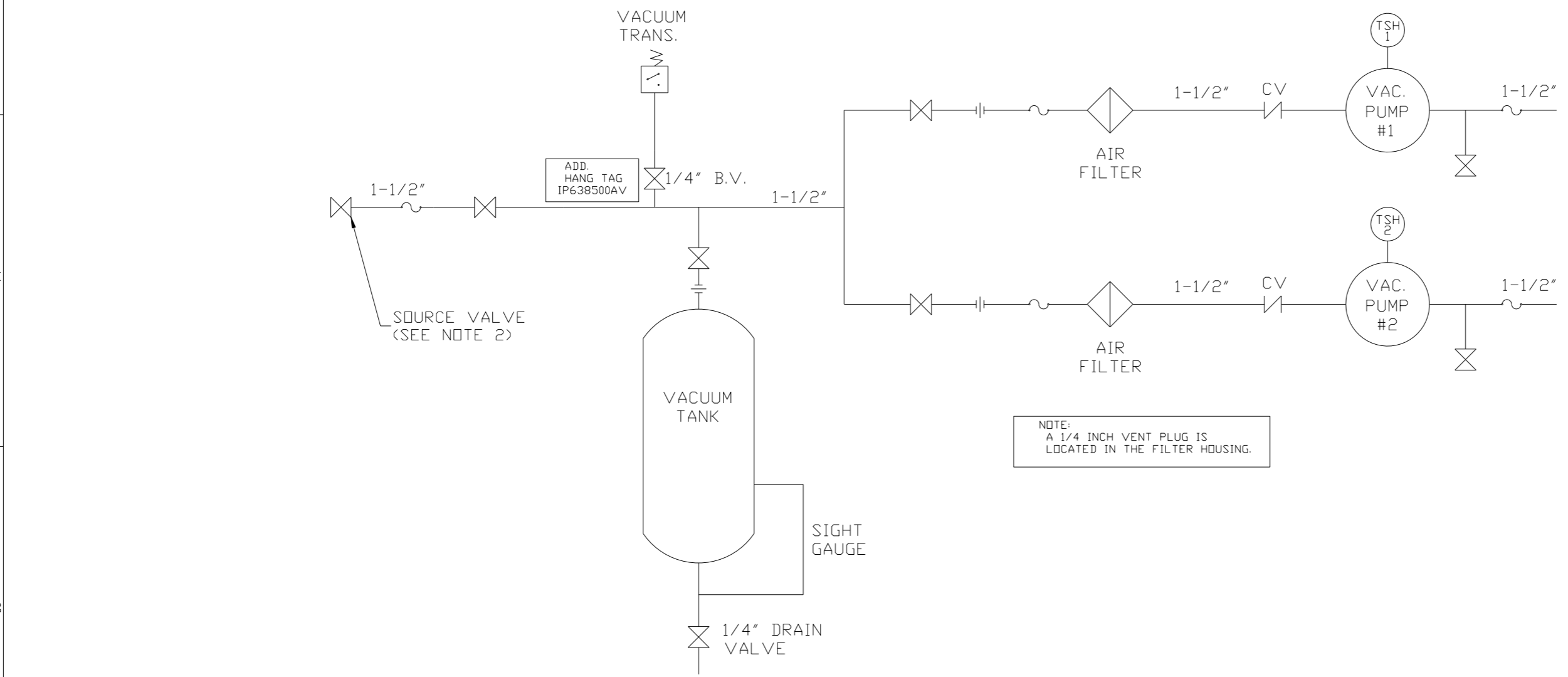
120GAL ASME
RECEIVER

NOTE: SYSTEM DESIGNED IN
COMPLIANCE WITH U.S. NFPA '99,
LATEST EDITION.

NOTE: A MINIMUM OF 24" CLEARANCE IS
RECOMMENDED AROUND THE ENTIRE UNIT.

SYMBOL LEGEND		= ADDITIONAL CONTROL REQ'D		Drawings to conform to the current revision of the following ANSI standards:	
⊖	= MINUS DRAFT	⊕	= PLUS DRAFT	⊖	= BRINELL HARDNESS
TOLERANCES NOT SPECIFIED		AUTOCAD REL2008 LT		DO NOT SCALE DRAWING FOR DIMENSIONS	
.XX	±	INCH		Sheet 1 of 2	SCALE 1:10
.XXX	±	CONFIDENTIAL DISCLOSURE			
<<DEG>> ±		This drawing is the property of POWEREX, INC. of the SCOTT FITZGER COMPANY and subject to return on demand. Its contents are confidential and must not be copied or submitted to outside parties for use or examination.			
MATERIAL		N/A		DRAWN BY: AEK, CHECKED BY: GES, APPROVED BY: DMS, RJR	
PART NAME		5HP. VACUUM		11/21/11 11/21/11 11/21/11 11/21/11	
		120GAL. DUPLEX		POWEREX 150 PRODUCTION DRIVE, HARRISON, OHIO 45030 Ph: 888-769-7979 FAX: (513) 367-3125	
DWG NO		VTDO404		SIZE D	

REV	ZONE	REVISION	DATE	ECN	NAME	CHKD
J-1	ALL	ADDED PBM1 SHEETS	11/21/11	22610	AEK	GES
K-1	ALL	ADDED SIGHT GAUGE	5/24/13	PXEC0030	AEK	GES
L-1	ALL	MADE HIGH TEMP STANDARD ON BASIC CONTROLS	7/3/14	PXEC0048	AEK	GES
M-1	ALL	UPDATED TO NEW RA SERIES PUMP	9/1/16	PXEC0148	AEK	GES



NOTE:
A 1/4 INCH VENT PLUG IS
LOCATED IN THE FILTER HOUSING.

LEGEND	
	TEMP. SWITCH
	AIR FILTER
	BALL VALVE
	VACUUM SWITCH
	CHECK VALVE
	FLEX LINE
	UNION

NOTES:
1) TSH - TEMPERATURE SWITCH HIGH
2) PER NFPA THE SYSTEM WILL REQUIRE A SOURCE VALVE (SUPPLIED BY OTHERS).

SYMBOL LEGEND			ADDITIONAL CONTROL REQ'D	Drawings to conform to the current revision of the following ANSI standards:	
	MINUS DRAFT		BRINELL HARDNESS	Y14.3 Multi and sectional view dgs. Y14.5M Dimensioning and tolerancing	
TOLERANCES NOT SPECIFIED		AUTOCAD REL2008 LT	DO NOT SCALE DRAWING FOR DIMENSIONS		
.XX ±	.XXX ±	<DEG> ±	INCH	Sheet 2 of 2	SCALE 1:10
CONFIDENTIAL DISCLOSURE This drawing is the property of POWEREX, INC. of the SCOTT FITZGER COMPANY and subject to return on demand. Its contents are confidential and must not be copied or submitted to outside parties for use or examination.					
DRAWN BY	CHECKED BY	APPROVED BY	ENGINEERING	MFG/MRKTG	
AEK	GES	DMS	RJR		
11/21/11	11/21/11	11/21/11	11/21/11	11/21/11	11/21/11
MATERIAL			N/A		
PART NAME			DUPLX VAC TANKMOUNT		
FLOW SCHEMATIC			VTDO404		
DWG NO			SIZE D		