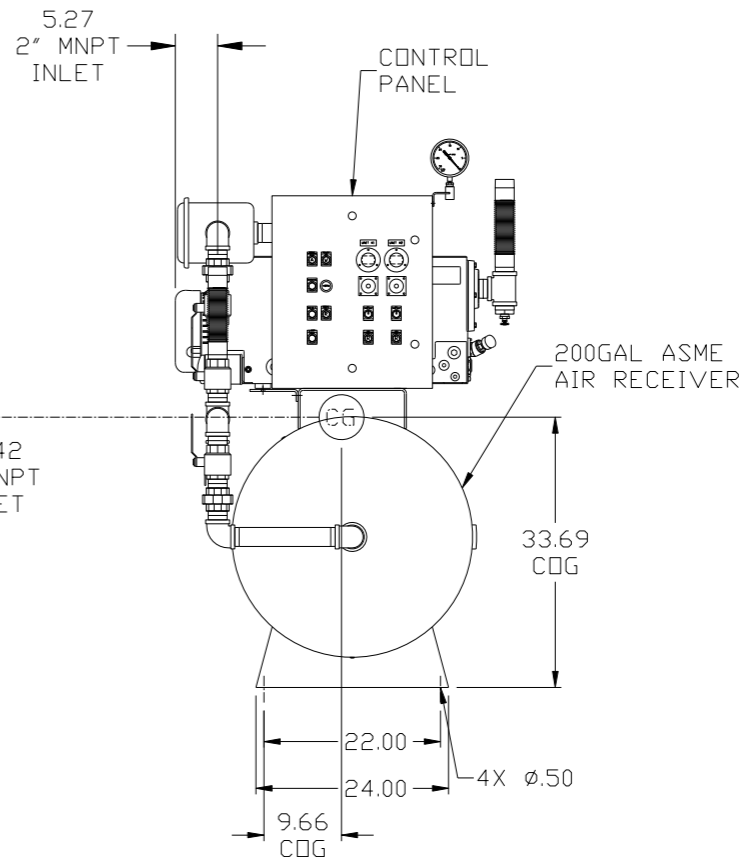
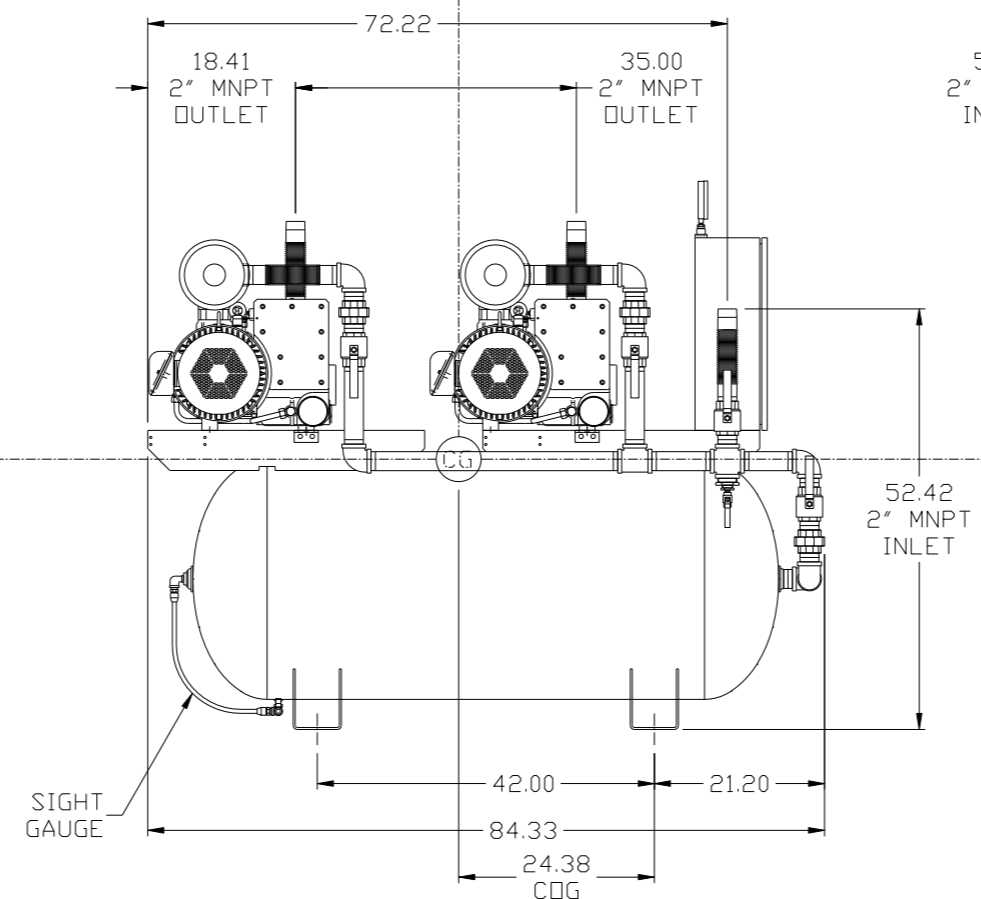
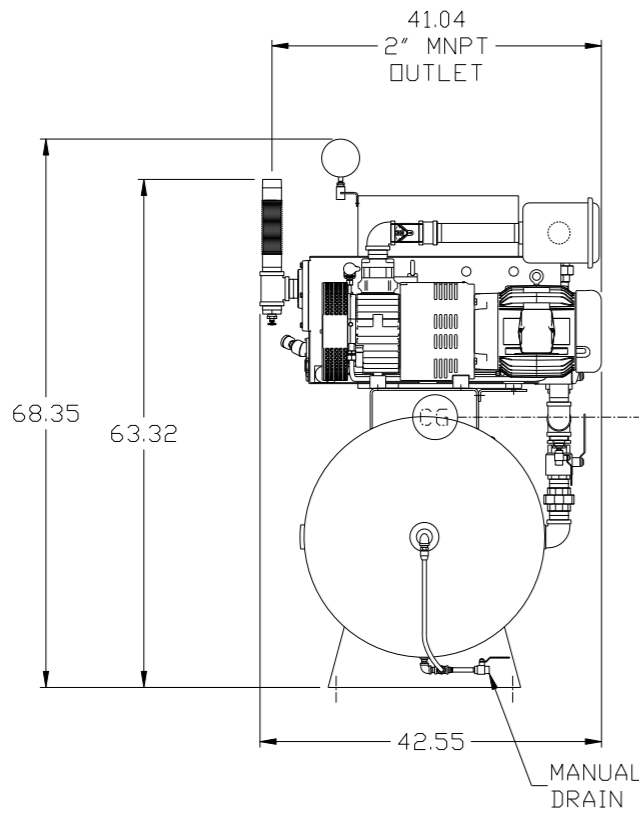
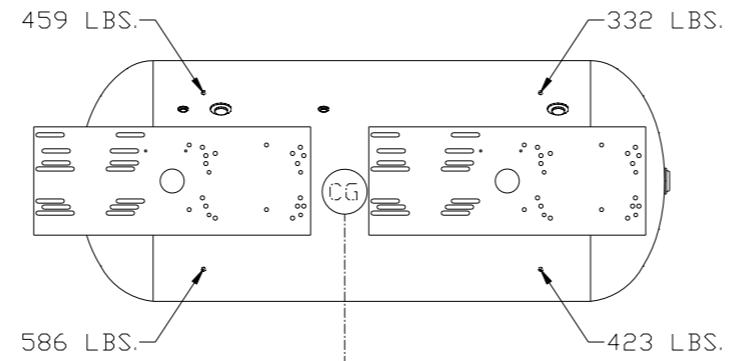


REV	ZONE	REVISION	DATE	ECN	NAME	CHKD
B-1	ALL	RELEASE TO PRODUCTION	2/15/08	21881	AEK	GES
B-2	ALL	UPDATED LAYOUT & FLOW TO CURRENT STANDARD	3/17/08	21881	AEK	GES
B-3	B-5	REMOVED THE SIGHT GAUGE	04/12/08	21907	DMS	GES
B-4	2 ALL	REMOVED LOW OIL LIGHT OPTION	7/18/08	21907	AEK	GES
B-5	1 ALL	MOVED INLET PLUMBING TO MOTOR SIDE	9/11/08	21907	AEK	GES
C-1	1 ALL	ADJUSTED INLET LOCATION	1/12/09	22127	AEK	GES
C-2	1 ALL	RELOCATED SYSTEM INLET PER PRODUCTION	4/30/09	22127	AEK	GES
C-3	1 ALL	REMOVED VACUUM SWITCHES FROM CONTRL PANEL	12/7/09	22127	AEK	GES
D-1	2 C3.D3	ADDED DRIP LEG	3/16/10	22348	AEK	DMS
E-1	1 ALL	ADDED COG / LEG LOAD INFO	3/29/11	22546	AEK	GES
F-1	ALL	ADDED PBMI SHEETS	11/21/11	22610	AEK	GES
G-1	2 C3.D3	MOVED TEMP SWITCH TO PUMP	5/16/12	22772	AEK	DMS
H-1	ALL	ADDED SIGHT GAUGE	10/19/12	22723	AEK	DMS
J-1	ALL	CHANGED HIGH TEMP TO STANDARD OPTION FOR BASIC CONTROLS	9/23/13	PXEC0048	AEK	GES
K-1	1 ALL	UPDATED TO RA SERIES PUMP	10/6/16	PXEC0148	AEK	GES



COG INFORMATION:
TOTAL WEIGHT: 1800 LBS
C.O.G. DIMENSIONS
X (FRONT): -24.38"
Y (RIGHT): 9.66"
Z (HEIGHT): 33.69"

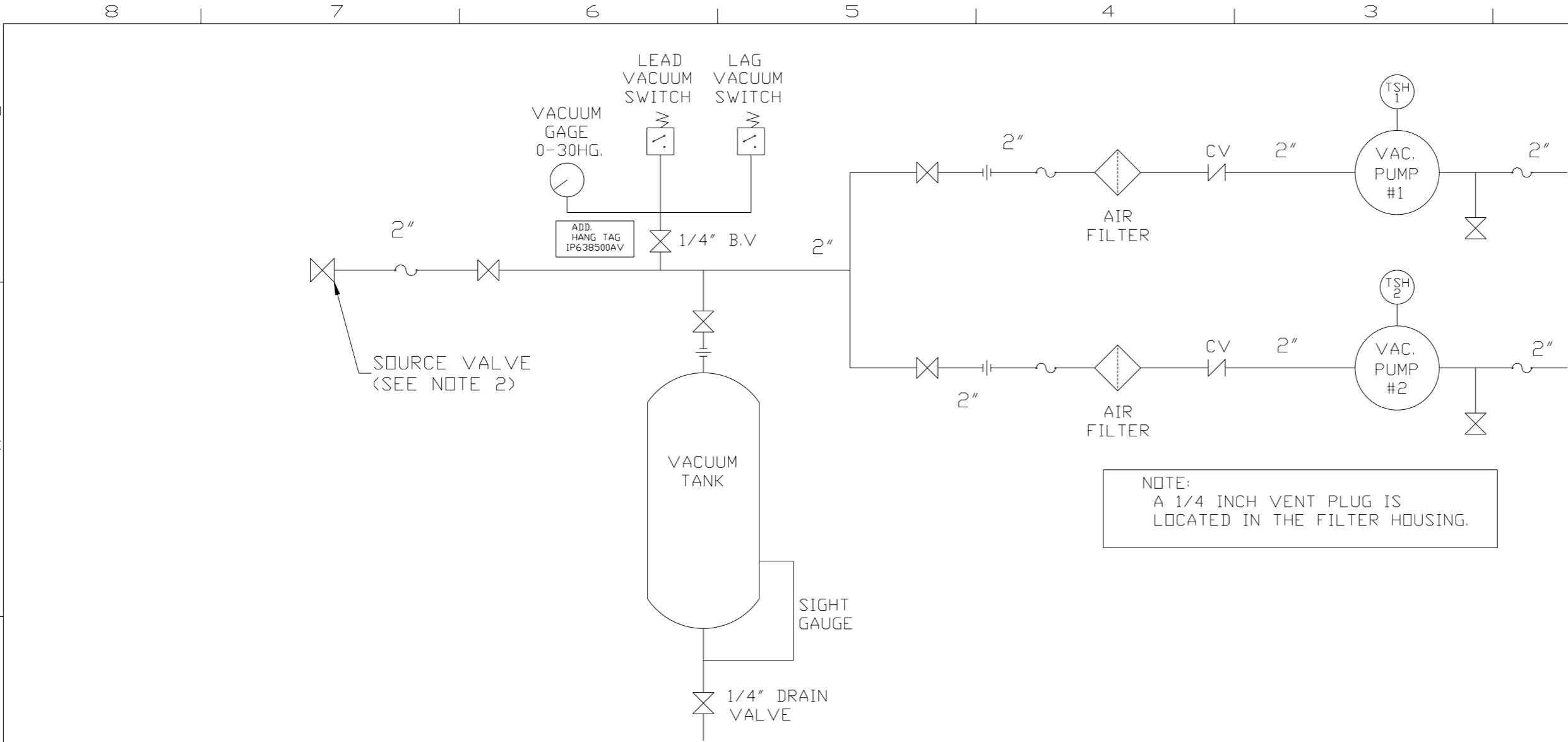
NOTE: A MINIMUM OF 24" CLEARANCE IS RECOMMENDED AROUND THE ENTIRE UNIT.

NOTE: SYSTEM DESIGNED IN COMPLIANCE WITH U.S. NFPA '99, LATEST EDITION.

denotes center of gravity (CG)

SYMBOL LEGEND ⊖ = MINUS DRAFT ⊕ = PLUS DRAFT TOLERANCES NOT SPECIFIED .XX ± .XXX ± < (DEG) ±		⊕ = ADDITIONAL CONTROL REQ'D HRC = BRINELL HARDNESS	Drawings to conform to the current revision of the following ANSI standards: Y14.3 Multi and sectional view dgs. Y14.5M Dimensioning and tolerancing
AUTOCAD REL2008 LT INCH		DO NOT SCALE DRAWING FOR DIMENSIONS Sheet 1 of 2 SCALE 1:12	
CONFIDENTIAL DISCLOSURE This drawing is the property of POWEREX, INC. of the SCOTT FETZER COMPANY and subject to return on demand. Its contents are confidential and must not be copied or submitted to outside parties for use or examination.		DRAWN BY AEK	CHECKED BY GES
MATERIAL N/A		APPROVED BY ENGINEERING DMS	APPROVED BY MFG/MKTG DG
PART NAME 7.5HP VACUUM 200GAL DUPLEX		DATE 2/15/08	DATE 2/15/08
DWG NO VTD0755		DATE 2/15/08	

REV	ZONE	REVISION	DATE	ECN	NAME	CHKD
B-1	ALL	RELEASE FOR PRODUCTION	2/15/08	21881	AEK	GES
B-2	ALL	UPDATED LAYOUT & FLOW TO CURRENT STANDARD	3/17/08	21881	AEK	GES
B-3	B-5	REMOVED THE SIGHT GAUGE	04/12/08	21907	DMS	GES
B-4	2 ALL	REMOVED LOW OIL LIGHT OPTION	7/18/08	21907	AEK	GES
B-5	1 ALL	MOVED INLET PLUMBING TO MOTOR SIDE	9/11/08	21907	AEK	GES
C-1	1 ALL	ADJUSTED INLET LOCATION	1/12/09	22127	AEK	GES
C-2	1 ALL	RELOCATED SYSTEM INLET PER PRODUCTION	4/30/09	22127	AEK	GES
C-3	1 ALL	REMOVED VACUUM SWITCHES FROM CONTRL PANEL	12/7/09	22127	AEK	GES
D-1	2 C3.D3	ADDED DRIP LEG	3/16/10	22348	AEK	DMS
E-1	1 ALL	ADDED CDG / LEG LOAD INFO	3/29/11	22546	AEK	GES
F-1	ALL	ADDED P&MI SHEETS	11/21/11	22610	AEK	GES
G-1	2 C3.D3	MOVED TEMP SWITCH TO PUMP	5/16/12	22772	AEK	DMS
H-1	ALL	ADDED SIGHT GAUGE	10/19/12	22723	AEK	DMS
H-2	2 ALL	ADDED SOURCE VALVE INFORMATION	10/19/12	22723	AEK	DMS
J-1	ALL	CHANGED HIGH TEMP TO STANDARD OPTION FOR BASIC CONTROLS	9/23/13	PXEC0048	AEK	GES
K-1	1 ALL	UPDATED TO RA SERIES PUMP	10/6/16	PXEC0148	AEK	GES



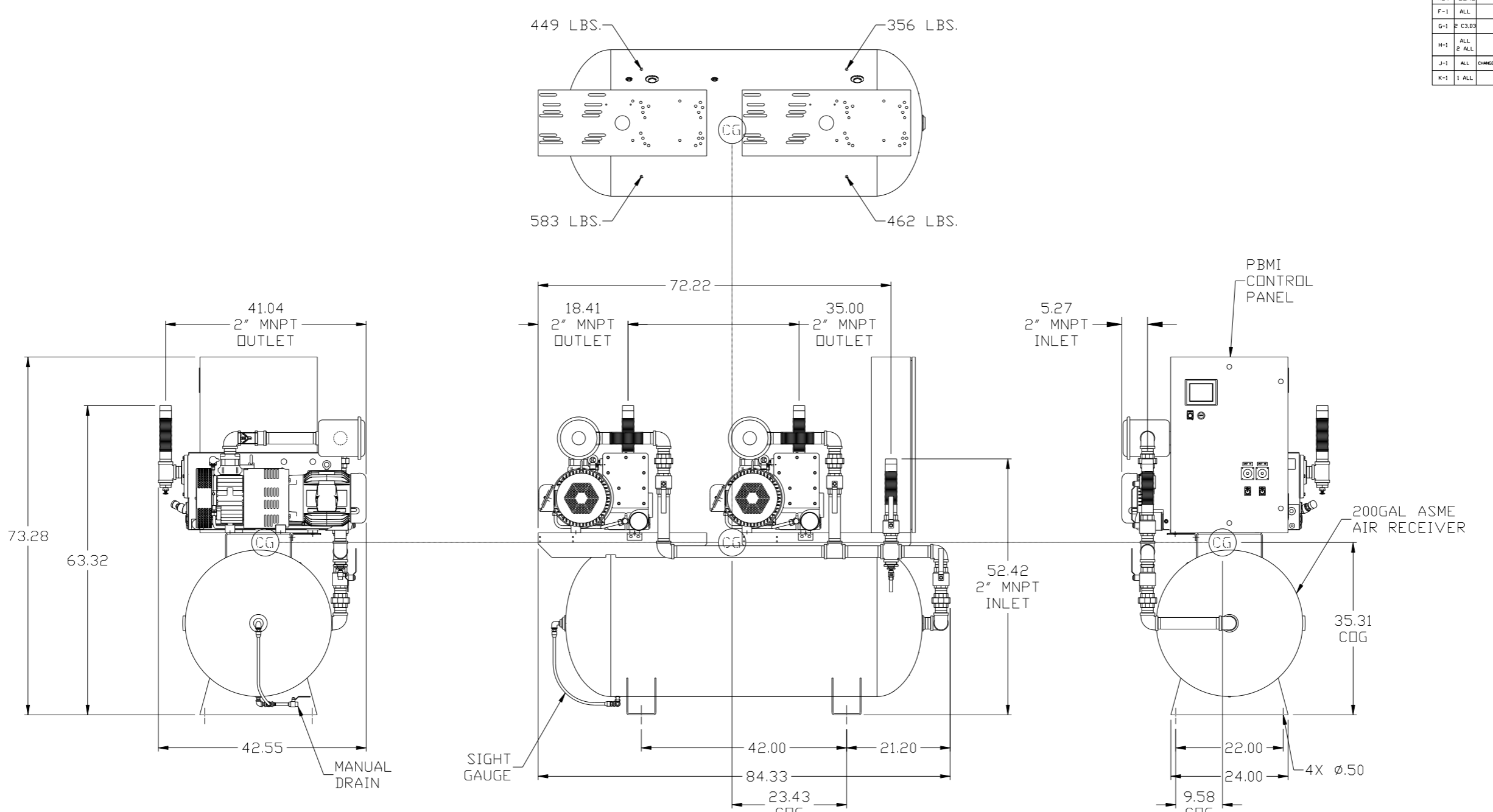
NOTE:
A 1/4 INCH VENT PLUG IS
LOCATED IN THE FILTER HOUSING.

LEGEND	
	TEMP. SWITCH
	AIR FILTER
	BALL VALVE
	VACUUM SWITCH
	CHECK VALVE
	FLEX LINE
	UNION

NOTE:
1) TSH - TEMPERATURE SWITCH HIGH
2) PER NFPA THE SYSTEM WILL REQUIRE A SOURCE VALVE (SUPPLIED BY OTHERS).

SYMBOL LEGEND			= ADDITIONAL CONTROL REQ'D		Drawings to conform to the current revision of the following ANSI standards:	
	= MINUS DRAFT		= BRINELL HARDNESS		Y14.3 Multi and sectional view dgs. Y14.5M Dimensioning and tolerancing	
TOLERANCES NOT SPECIFIED		AUTOCAD REL2008 LT	DO NOT SCALE DRAWING FOR DIMENSIONS			
.XX ±		INCH	Sheet 2 of 2	SCALE 1:12		
CONFIDENTIAL DISCLOSURE This drawing is the property of POWEREX, INC. of the SCOTT FETZER COMPANY and subject to return on demand. Its contents are confidential and must not be copied or submitted to outside parties for use or examination.						
DRAWN BY	CHECKED BY	APPROVED BY	ENGINEERING MFG/MRKTG			
AEK	GES	DMS	DG			
2/15/08	2/15/08	2/15/08	2/15/08			
MATERIAL		N/A				
PART NAME		DUPLX VAC TANK MOUNT				
FLOW SCHEMATIC		VTDO755				
SIZE		D				

REV	ZONE	REVISION	DATE	ECN	NAME	CHKD
F-1	ALL	ADDED PBMI SHEETS	11/21/11	22610	AEK	GES
G-1	2 C3.D3	MOVED TEMP SWITCH TO PUMP	5/16/12	22772	AEK	DMS
H-1	ALL	ADDED SIGHT GAUGE	10/19/12	22723	AEK	DMS
J-1	ALL	ADDED SOURCE VALVE INFORMATION	9/23/13	PXEC0048	AEK	GES
K-1	1 ALL	UPDATED TO RA SERIES PUMP	10/6/16	PXEC0148	AEK	GES



COG INFORMATION:
TOTAL WEIGHT: 1850 LBS
C.O.G. DIMENSIONS
X (FRONT): -23.43"
Y (RIGHT): 9.58"
Z (HEIGHT): 35.31"

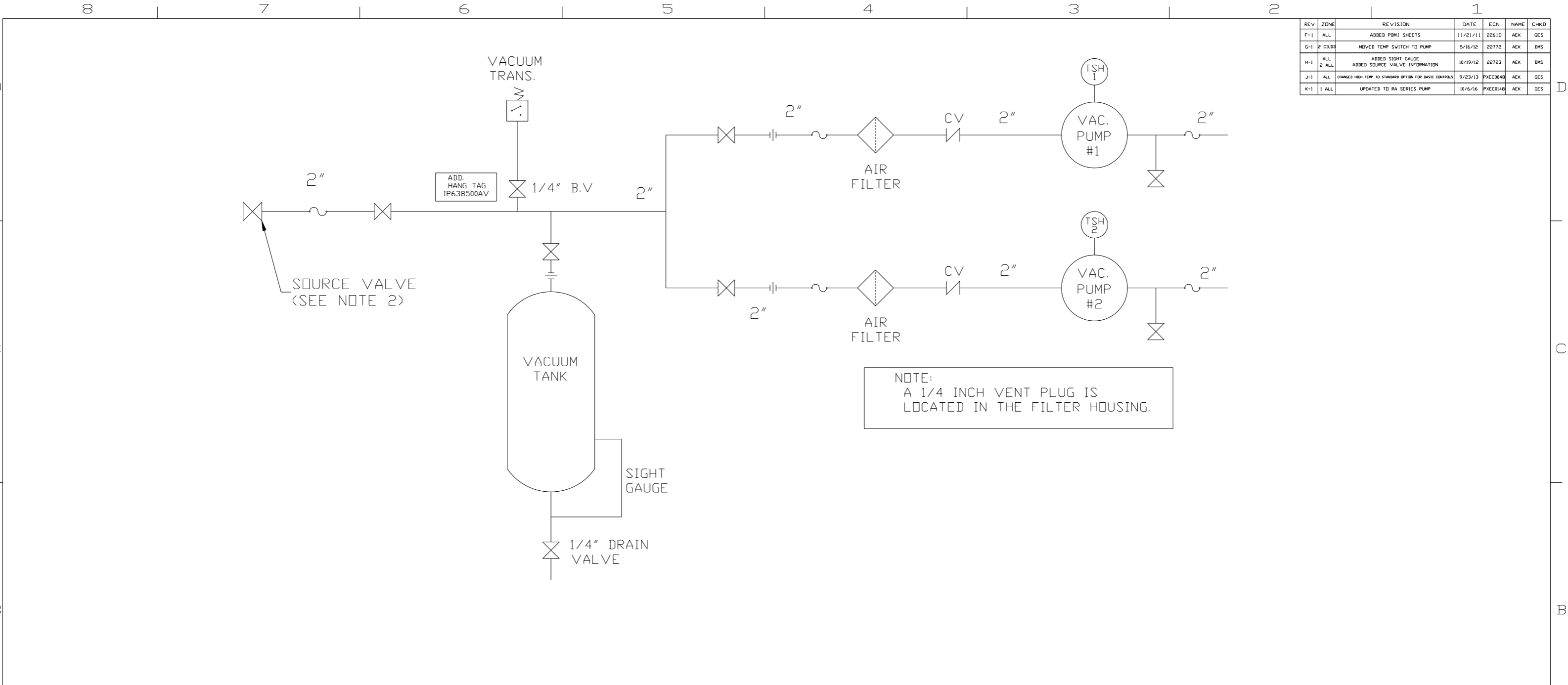
NOTE: A MINIMUM OF 24" CLEARANCE IS RECOMMENDED AROUND THE ENTIRE UNIT.

NOTE: SYSTEM DESIGNED IN COMPLIANCE WITH U.S. NFPA '99, LATEST EDITION.

denotes center of gravity (CG)

SYMBOL LEGEND		= ADDITIONAL CONTROL REQ'D		Drawings to conform to the current revision of the following ANSI standards:	
⊖	= MINUS DRAFT	⊕	= PLUS DRAFT	Y14.3 Multi and sectional view dgs. Y14.5M Dimensioning and tolerancing	
TOLERANCES NOT SPECIFIED		AUTOCAD REL2008 LT		DO NOT SCALE DRAWING FOR DIMENSIONS	
.XX ±	.XXX ±	INCH		Sheet 1 of 2	SCALE 1:12
CONFIDENTIAL DISCLOSURE This drawing is the property of POWEREX, INC. of the SCOTT FETZER COMPANY and subject to return on demand. Its contents are confidential and must not be copied or submitted to outside parties for use or examination.					
DRAWN BY	CHECKED BY	APPROVED BY	ENGINEERING	MFG/MRKTG	
AEK	GES	DMS	RJR		
11/21/11	11/21/11	11/21/11	11/21/11		
MATERIAL		N/A			
PART NAME		7.5HP VACUUM 200GAL DUPLEX			
DWG NO		VTDO755			
SIZE		D			

REV	ZONE	REVISION	DATE	ECN	NAME	CHKD
F-1	ALL	ADDED PBM1 SHEETS	11/21/11	22610	AEK	GES
G-1	2	MOVED TEMP SWITCH TO PUMP	5/16/12	22772	AEK	DMS
H-1	ALL	ADDED SIGHT GAUGE	10/19/12	22723	AEK	DMS
J-1	ALL	ADDED SOURCE VALVE INFORMATION	9/23/13	PXEC0048	AEK	GES
K-1	1	UPDATED TO RA SERIES PUMP	10/6/16	PXEC0148	AEK	GES



NOTE:
A 1/4 INCH VENT PLUG IS
LOCATED IN THE FILTER HOUSING.

LEGEND	
	TEMP. SWITCH
	AIR FILTER
	BALL VALVE
	VACUUM SWITCH
	CHECK VALVE
	FLEX LINE
	UNION

NOTE:
1) TSH - TEMPERATURE SWITCH HIGH
2) PER NFPA THE SYSTEM WILL REQUIRE A SOURCE VALVE (SUPPLIED BY OTHERS).

SYMBOL LEGEND			ADDITIONAL CONTROL REQ'D	Drawings to conform to the current revision of the following ANSI standards:
	MINUS DRAFT		BRINELL HARDNESS	Y14.3 Multi and sectional view dsgs. Y14.5M Dimensioning and tolerancing
TOLERANCES NOT SPECIFIED		AUTOCAD REL2008 LT	DO NOT SCALE DRAWING FOR DIMENSIONS	
.XX ±	.XXX ±	INCH	Sheet 2 of 2	SCALE 1:12
CONFIDENTIAL DISCLOSURE This drawing is the property of POWEREX, INC. of the SCOTT FETZER COMPANY and subject to return on demand. Its contents are confidential and must not be copied or submitted to outside parties for use or examination.		DRAWN BY AEK	CHECKED BY GES	APPROVED BY ENGINEERING MFG/MRKTG DMS RJR
MATERIAL N/A		11/21/11	11/21/11	11/21/11
PART NAME DUPLEX VAC TANK MOUNT FLOW SCHEMATIC		 150 PRODUCTION DRIVE, HARRISON, OHIO 45030 Ph: 888-769-7979 FAX: (513) 367-3125		SIZE D
		DWG NO VTDO755		