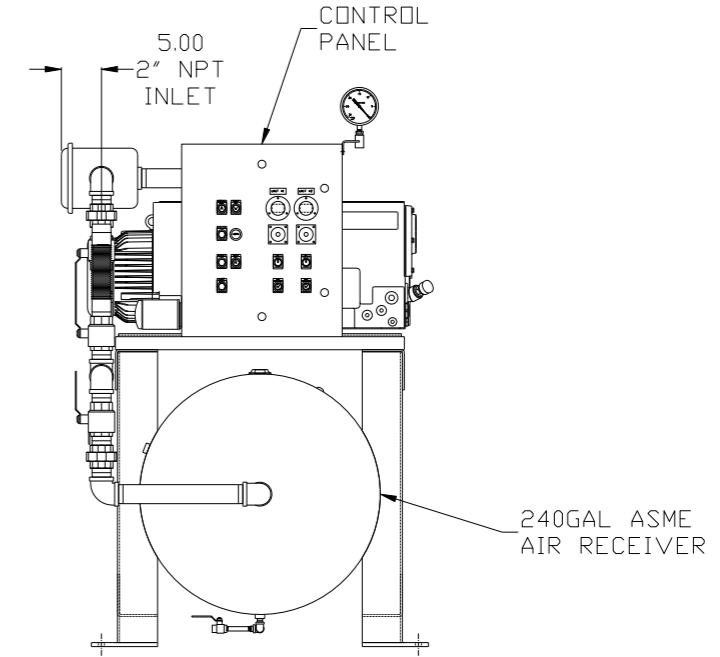
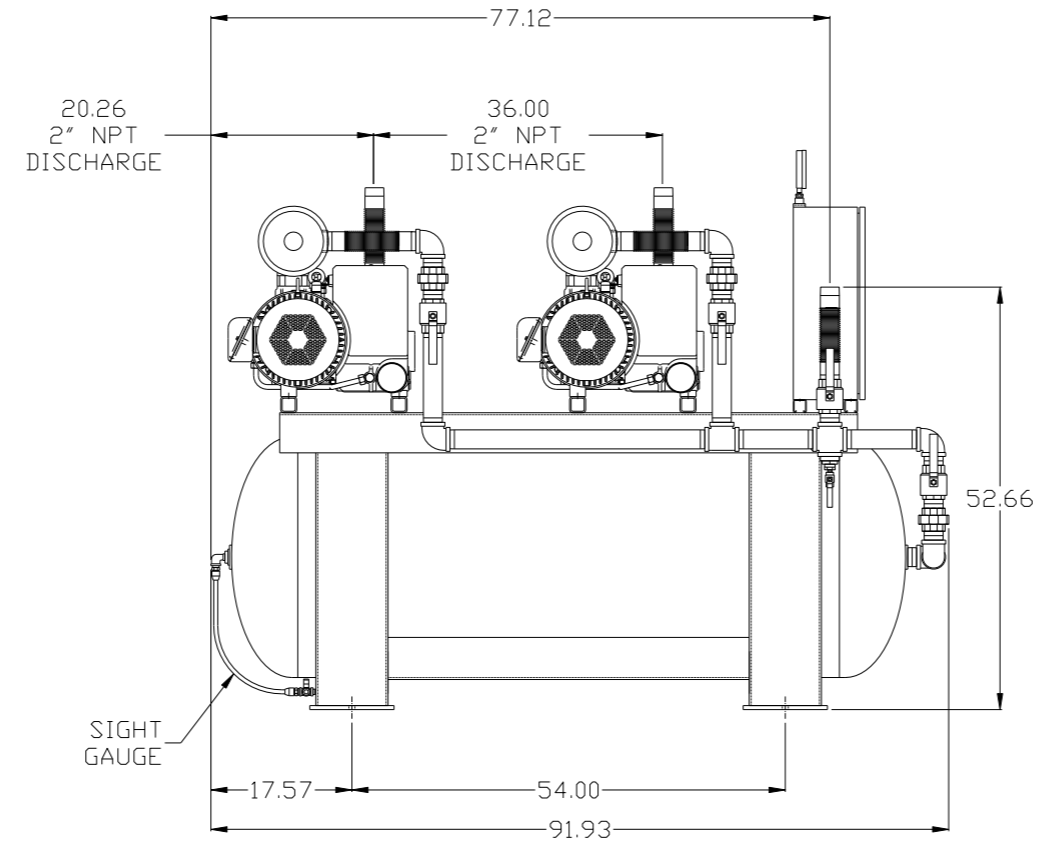
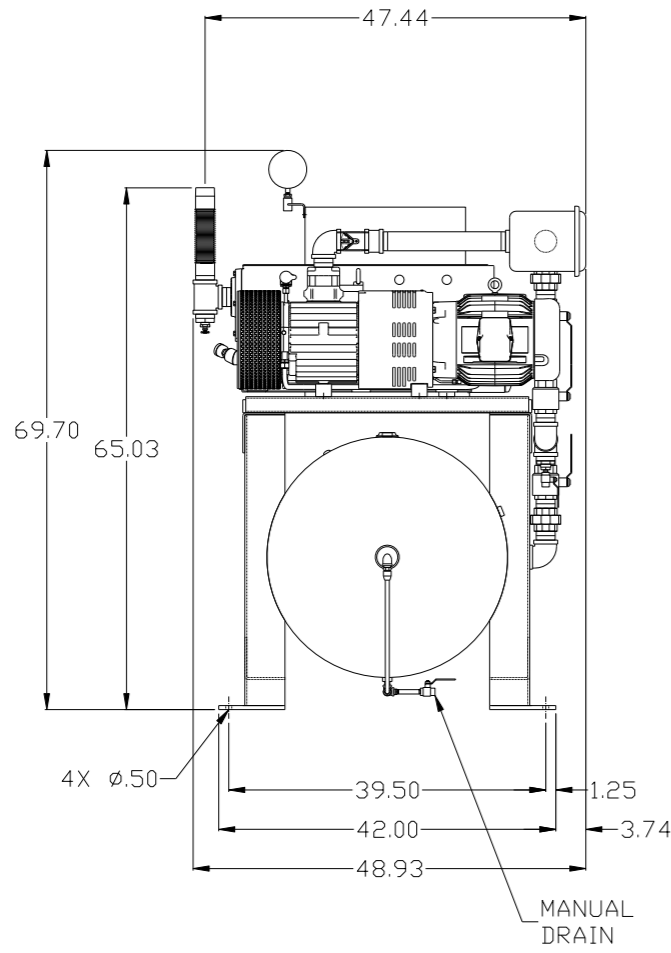


REV	ZONE	REVISION	DATE	ECN	NAME	CHKD
B-1	ALL	RELEASE FOR PRODUCTION	2/27/08	21881	AEK	GES
B-2	ALL	UPDATED LAYOUT & FLOW TO CURRENT STANDARD	3/17/08	21881	AEK	GES
B-3	2 C6	REMOVED SIGHT GAUGE	4/29/08	21881	AEK	GES
C-1	1 C2	REPLACED PUMP MNTG TRAY(AM0390AV) W/ AM06700AV	6/10/08	21906	AEK	GES
D-1	2 ALL	REMOVED LOW OIL LIGHT OPTION	7/18/08	21907	AEK	GES
D-2	ALL	REMOVED OPTIONAL LAYOUT MOVED INLET PLUMBING TO MOTOR SIDE	9/17/08	21907	AEK	GES
D-3	1 ALL	REPLACED PUMP MOUNTING PLATE W/ 2" SS STEEL TUBE	12/17/08	21907	AEK	GES
E-1	1 ALL	RELOCATED SYSTEM INLET PER PRODUCTION	4/27/09	22127	AEK	GES
E-2	1 C2	REMOVED VACUUM SWITCHES FROM CONTROL PANEL	10/16/09	22127	AEK	DMS
F-1	2 C2	ADDED DRIP LEG	3/16/10	22348	AEK	DMS
G-1	ALL	ADDED PBM SHEETS	11/21/11	22610	AEK	GES
H-1	ALL	ADDED SIGHT GAUGE	2/8/13	PXEC0030	AEK	DMS
H-2	2 ALL	ADDED SOURCE VALVE INFORMATION	2/8/13	PXEC0030	AEK	DMS
J-1	ALL	MADE HIGH TEMP STANDARD ON BASIC CONTROLS	6/20/14	PXEC0048	AEK	GES
K-1	1 ALL	UPDATED TO RA SERIES PUMP	10/10/16	PXEC0148	AEK	GES

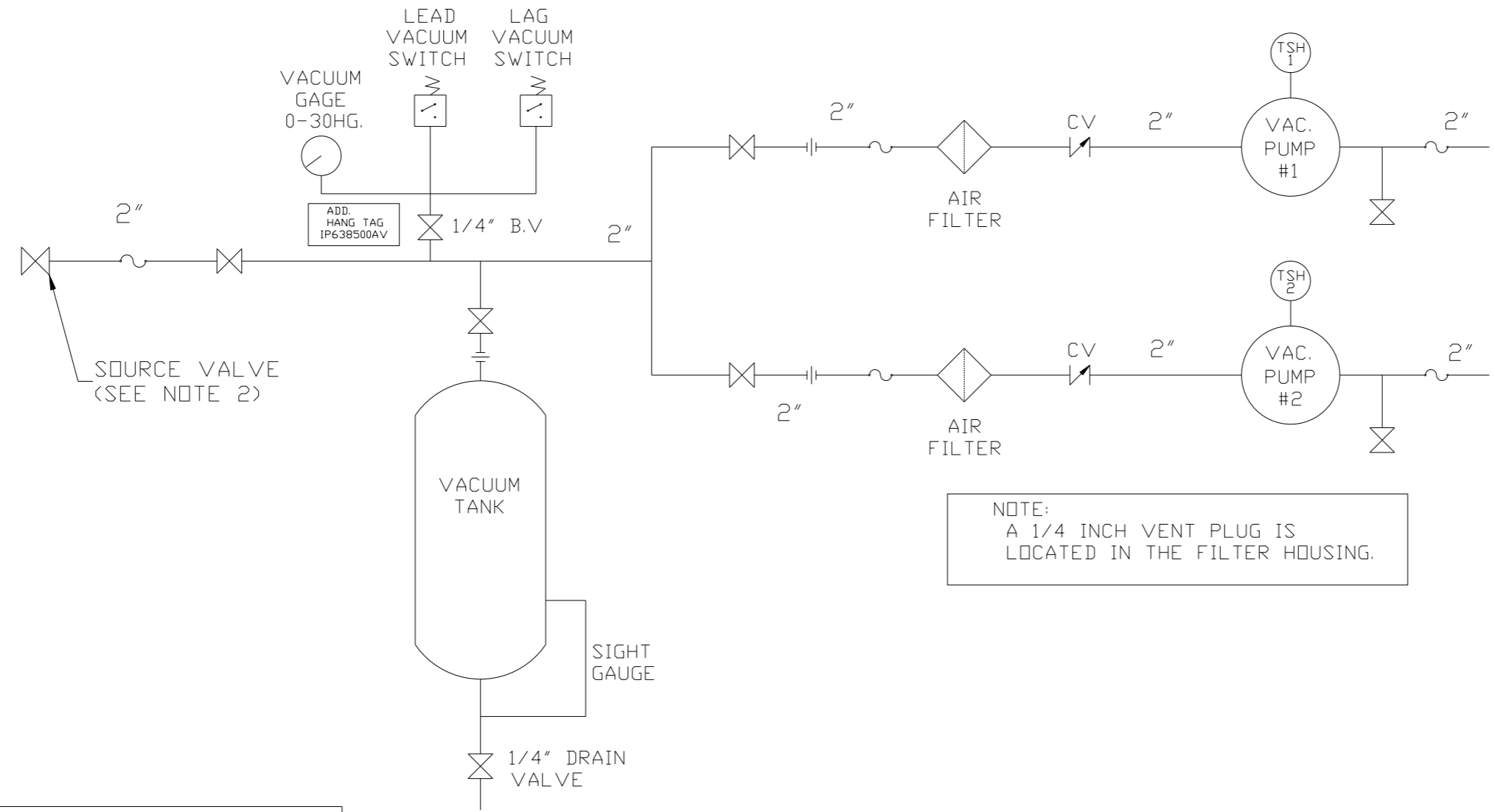


NOTE: SYSTEM DESIGNED IN COMPLIANCE WITH U.S. NFPA '99, LATEST EDITION.

SYMBOL LEGEND ⊖ = MINUS DRAFT ⊕ = PLUS DRAFT TOLERANCES NOT SPECIFIED .XX ± .XXX ± \angle (DEG.) ±		= ADDITIONAL CONTROL REQ'D = BRINELL HARDNESS		Drawings to conform to the current revision of the following ANSI standards: Y14.3 Multi and sectional view dgs. Y14.5M Dimensioning and tolerancing
AUTOCAD REL2008 LT INCH		DO NOT SCALE DRAWING FOR DIMENSIONS Sheet 1 of 2 SCALE 1:12		
CONFIDENTIAL DISCLOSURE This drawing is the property of POWEREX, INC. of the SCOTT FETZER COMPANY and subject to return on demand. Its contents are confidential and must not be copied or submitted to outside parties for use or examination.				
DRAWN BY AEK	CHECKED BY GES	APPROVED BY DMS	MFG/MRKTG RJR	
2/27/08	2/27/08	2/27/08	2/27/08	
MATERIAL N/A		 150 PRODUCTION DRIVE, HARRISON, OHIO 45030 Ph: 888-769-7979 FAX: (513) 367-3125		
PART NAME 10HP VACUUM 240 GAL DUPLEX		DWG NO VTD1006	SIZE D	

NOTE: A MINIMUM OF 24" CLEARANCE IS RECOMMENDED AROUND THE ENTIRE UNIT.

REV	ZONE	REVISION	DATE	ECN	NAME	CHKD
B-1	ALL	RELEASE FOR PRODUCTION	2/27/08	21881	AEK	GES
B-2	ALL	UPDATED LAYOUT & FLOW TO CURRENT STANDARD	3/17/08	21881	AEK	GES
B-3	2 C6	REMOVED SIGHT GAUGE	4/29/08	21881	AEK	GES
C-1	1 C2	REPLACED PUMP MNTG TRAY(AM0390AV) W/ AM06720AV	6/10/08	21906	AEK	GES
D-1	2 ALL	REMOVED LOW OIL LIGHT OPTION	7/18/08	21907	AEK	GES
D-3	1 ALL	REPLACED PUMP MOUNTING PLATE W/ 2" SS STEEL TUBE	12/17/08	21907	AEK	GES
E-1	1 ALL	RELOCATED SYSTEM INLET PER PRODUCTION	4/27/09	22127	AEK	GES
E-2	1 C2	REMOVED VACUUM SWITCHES FROM CONTROL PANEL	10/16/09	22127	AEK	DMS
F-1	2 C2	ADDED DRIP LEG	3/16/10	22348	AEK	DMS
G-1	ALL	ADDED PBM SHEETS	11/21/11	22610	AEK	GES
H-1	ALL	ADDED SIGHT GAUGE	2/8/13	PXEC0030	AEK	DMS
H-2	ALL	ADDED SOURCE VALVE INFORMATION	2/8/13	PXEC0030	AEK	DMS
J-1	ALL	MADE HIGH TEMP STANDARD DN BASIC CONTROLS	6/20/14	PXEC0048	AEK	GES
K-1	1 ALL	UPDATED TO RA SERIES PUMP	10/10/16	PXEC0148	AEK	GES



NOTE:
A 1/4 INCH VENT PLUG IS
LOCATED IN THE FILTER HOUSING.

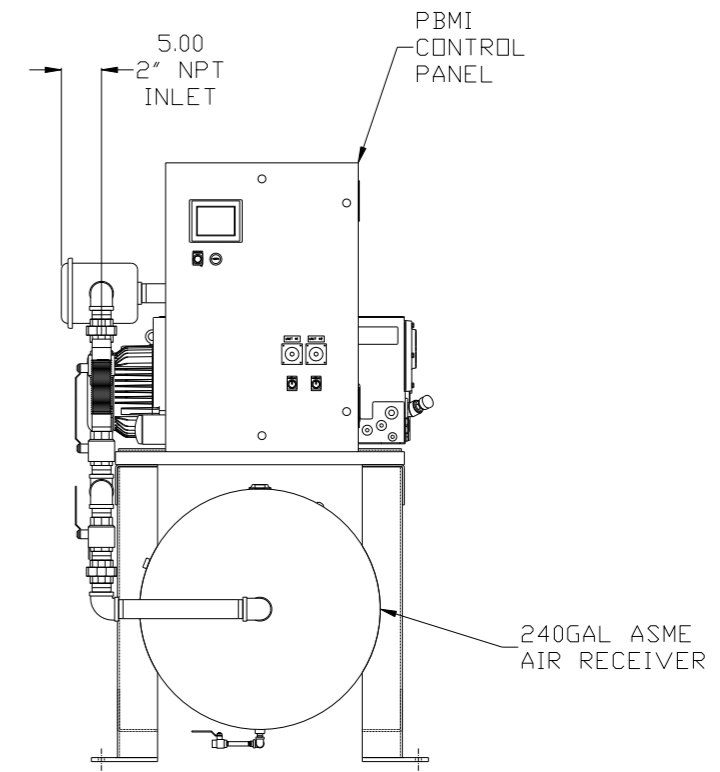
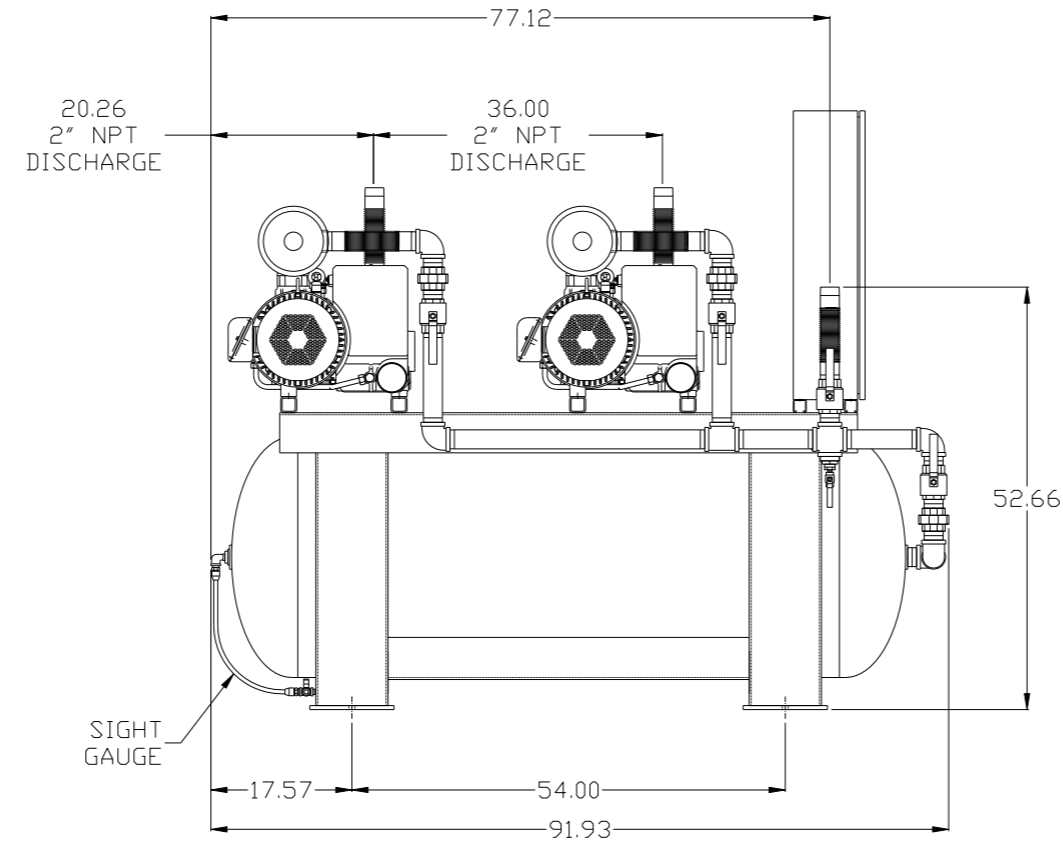
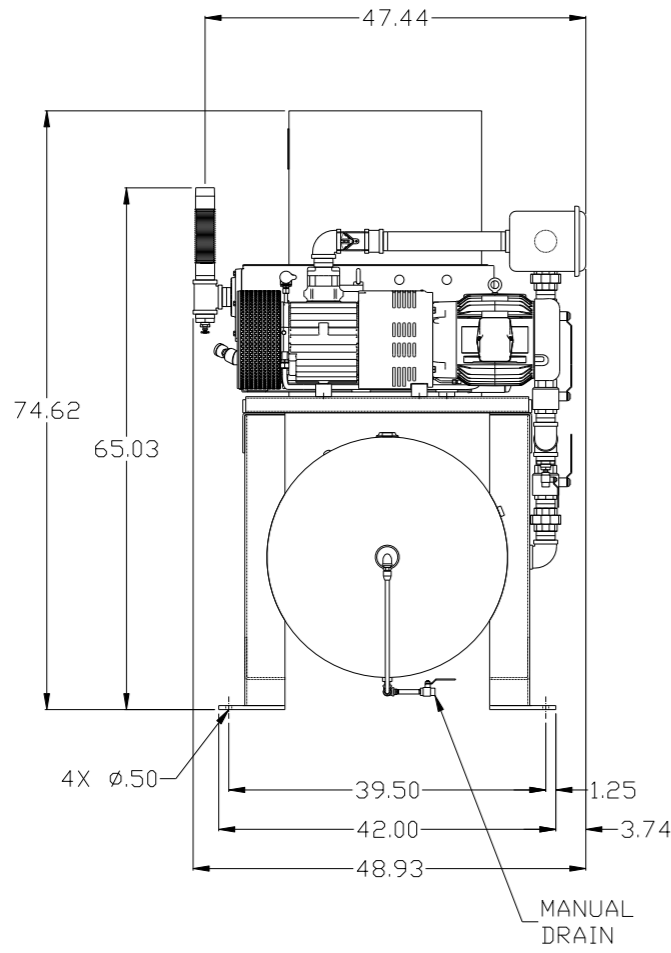
LEGEND	
	TEMP. SWITCH
	AIR FILTER
	BALL VALVE
	VACUUM SWITCH
	CHECK VALVE
	FLEX LINE
	UNION

NOTE:
1) TSH - TEMPERATURE SWITCH HIGH
2) PER NFPA THE SYSTEM WILL REQUIRE A SOURCE VALVE (SUPPLIED BY OTHERS).

SYMBOL LEGEND			ADDITIONAL CONTROL REQ'D	Drawings to conform to the current revision of the following ANSI standards:	
	MINUS DRAFT		BRINELL HARDNESS	Y14.3 Multi and sectional view dsgs. Y14.5M Dimensioning and tolerancing	
TOLERANCES NOT SPECIFIED		AUTOCAD REL2008 LT	DO NOT SCALE DRAWING FOR DIMENSIONS		
.XX ±	.XXX ±	INCH	Sheet 2 of 2	SCALE 1:12	
CONFIDENTIAL DISCLOSURE This drawing is the property of POWEREX, INC. OF THE SCOTT FETZER COMPANY and subject to return on demand. Its contents are confidential and must not be copied or submitted to outside parties for use or examination.					
DRAWN BY	CHECKED BY	APPROVED BY	ENGINEERING	MFG/MRKTG	
AEK	GES	DMS	RJR		
2/27/08	2/27/08	2/27/08	2/27/08	2/27/08	
MATERIAL		N/A			
PART NAME		VACUUM TANKMOUNT DUPLEX SCHEMATIC			
DWG NO		VTD1006		SIZE D	

8 7 6 5 4 3 2 1

REV	ZONE	REVISION	DATE	ECN	NAME	CHKD
G-1	ALL	ADDED PBMI SHEETS	11/21/11	22610	AEK	GES
H-1	ALL	ADDED SIGHT GAUGE	2/8/13	PXEC0030	AEK	DMS
J-1	ALL	MADE HIGH TEMP STANDARD ON BASIC CONTROLS	6/20/14	PXEC0048	AEK	GES
K-1	ALL	UPDATED TO RA SERIES PUMP	10/10/16	PXEC0148	AEK	GES



NOTE: SYSTEM DESIGNED IN COMPLIANCE WITH U.S. NFPA '99, LATEST EDITION.

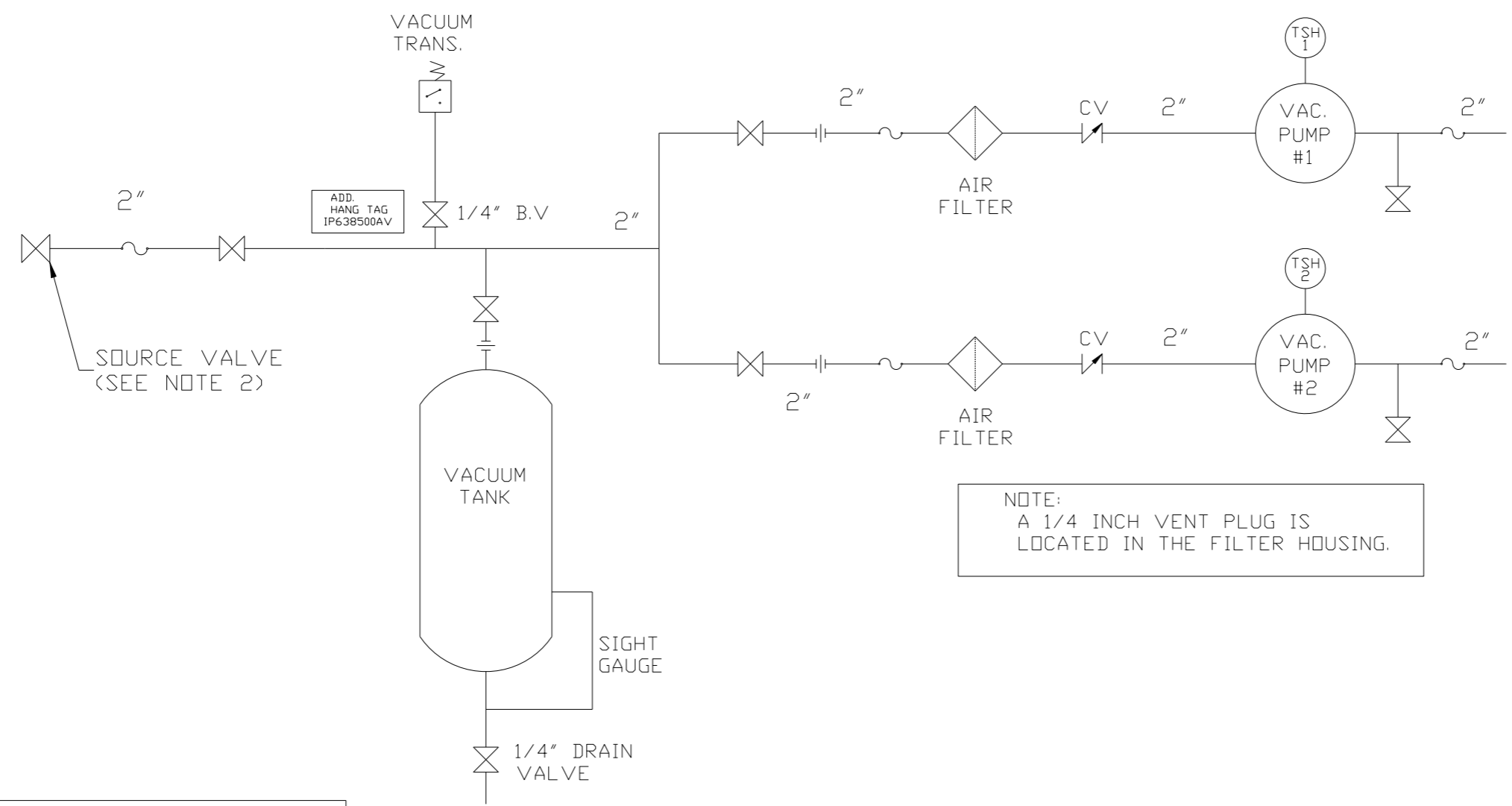
SYMBOL LEGEND ⊖ = MINUS DRAFT ⊕ = PLUS DRAFT TOLERANCES NOT SPECIFIED .XX ± .XXX ± \angle (DEG.) ±		= ADDITIONAL CONTROL REQ'D = BRINELL HARDNESS	Drawings to conform to the current revision of the following ANSI standards: Y14.3 Multi and sectional view dgs. Y14.5M Dimensioning and tolerancing
AUTOCAD REL2008 LT INCH		DO NOT SCALE DRAWING FOR DIMENSIONS Sheet 1 of 2 SCALE 1:12	
CONFIDENTIAL DISCLOSURE This drawing is the property of POWEREX, INC. of the SCOTT FETZER COMPANY and subject to return on demand. Its contents are confidential and must not be copied or submitted to outside parties for use or examination.			
DRAWN BY AEK	CHECKED BY GES	APPROVED BY ENGINEERING DMS MFG/MKTG RJR	11/21/11 11/21/11 11/21/11 11/21/11
MATERIAL N/A		 150 PRODUCTION DRIVE, HARRISON, OHIO 45030 Ph: 888-769-7979 FAX: (513) 367-3125	
PART NAME 10HP VACUUM 240 GAL DUPLEX		DWG NO VTD1006	SIZE D

NOTE: A MINIMUM OF 24" CLEARANCE IS RECOMMENDED AROUND THE ENTIRE UNIT.

8 7 6 5 4 3 2 1

VTD1006B.dwg

REV	ZONE	REVISION	DATE	ECN	NAME	CHKD
H-1	ALL	ADDED PBM1 SHEETS	11/21/11	22610	AEK	GES
H-1	ALL	ADDED SIGHT GAUGE	2/8/13	PXEC0030	AEK	DMS
J-1	ALL	MADE HIGH TEMP STANDARD ON BASIC CONTROLS	6/20/14	PXEC0048	AEK	GES
K-1	ALL	UPDATED TO RA SERIES PUMP	10/10/16	PXEC0148	AEK	GES



NOTE:
A 1/4 INCH VENT PLUG IS
LOCATED IN THE FILTER HOUSING.

LEGEND	
	TEMP. SWITCH
	AIR FILTER
	BALL VALVE
	VACUUM SWITCH
	CHECK VALVE
	FLEX LINE
	UNION

NOTE:
1) TSH - TEMPERATURE SWITCH HIGH
2) PER NFPA THE SYSTEM WILL REQUIRE A SOURCE VALVE (SUPPLIED BY OTHERS).

SYMBOL LEGEND			ADDITIONAL CONTROL REQ'D	Drawings to conform to the current revision of the following ANSI standards:	
	MINUS DRAFT		BRINELL HARDNESS	Y14.3 Multi and sectional view dgs. Y14.5M Dimensioning and tolerancing	
TOLERANCES NOT SPECIFIED		AUTOCAD REL2008 LT	DO NOT SCALE DRAWING FOR DIMENSIONS		
.XX ±	.XXX ±	INCH	Sheet 2 of 2	SCALE 1:12	
CONFIDENTIAL DISCLOSURE This drawing is the property of POWEREX, INC. of the SCOTT FETZER COMPANY and subject to return on demand. Its contents are confidential and must not be copied or submitted to outside parties for use or examination.					
DRAWN BY	CHECKED BY	APPROVED BY	ENGINEERING MFG/MRKTG		
AEK	GES	DMS	RJR		
11/21/11	11/21/11	11/21/11	11/21/11		
MATERIAL		N/A			
PART NAME		VACUUM TANKMOUNT DUPLEX SCHEMATIC			
DWG NO		VTD1006		SIZE D	