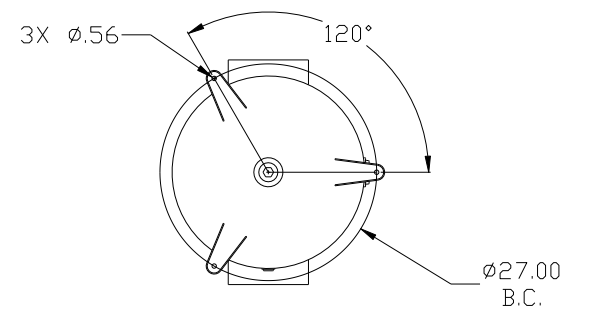
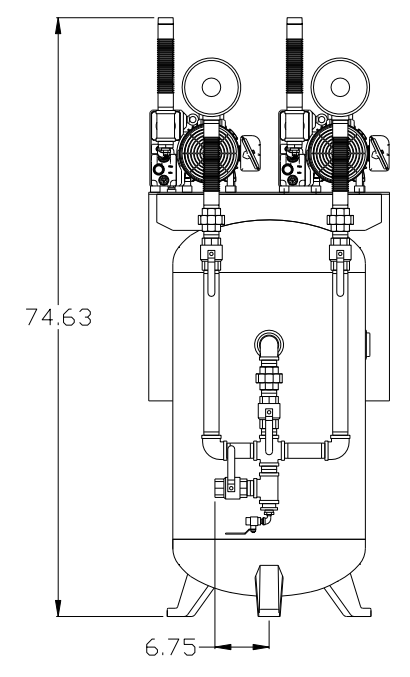
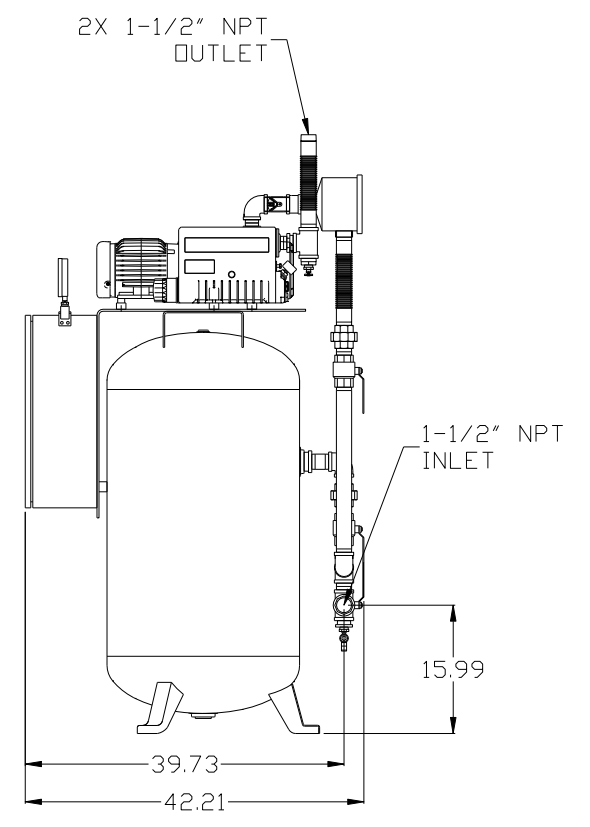
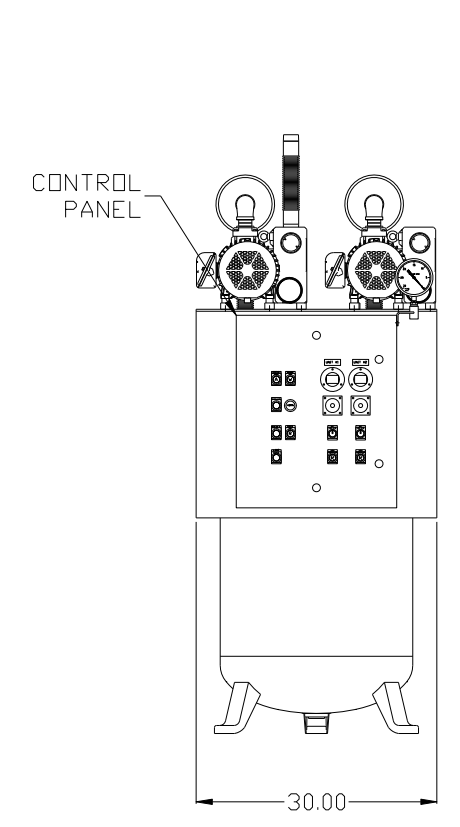
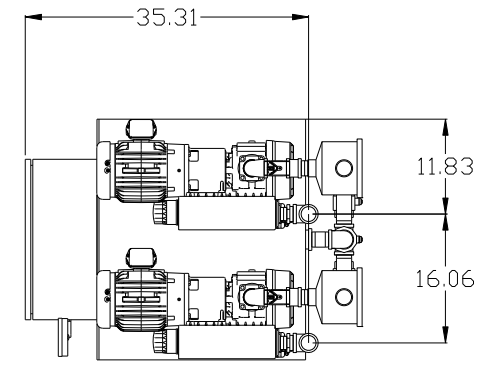


8 7 6 5 4 3 2 1

REV	ZONE	REVISION	DATE	ECN	NAME	CHKD
B-1	ALL	RELEASE FOR PRODUCTION	2/27/08	21881	AEK	GES
B-2	ALL	UPDATED LAYOUT & FLOW TO CURRENT STANDARD	3/17/08	21881	AEK	GES
B-3	1 ALL	REMOVED VERT VAC FRAME FROM DESIGN	4/21/08	21881	AEK	GES
C-1	1 ALL	REMOVED VACUUM SWITCHES FROM CONTROL PANEL	10/26/09	22127	AEK	GES
D-1	2 CS 2 CS	ADDED BRIP LEG REMOVED LOW OIL LIGHT OPTION	3/16/10	22390	AEK	DMS
E-1	1 ALL	UPDATED TO ARO630 RECEIVER	5/7/10	22348	AEK	GES
F-1	ALL	ADDED P&MI SHEETS	12/12/11	22610	AEK	GES
G-1	1 ALL	CORRECTED INLET SPUS LOCATION ON STANDARD CONFIGURATION	6/18/12	22723	AEK	GES
H-1	2 CS 2 ALL	ADDED SIGHT GAUGE ADDED SOURCE VALVE INFORMATION	3/14/13	PXEC0030	AEK	GES
J-1	1 ALL	UPDATED TO NEW RA SERIES PUMP	6/24/16	PXEC0148	AEK	GES



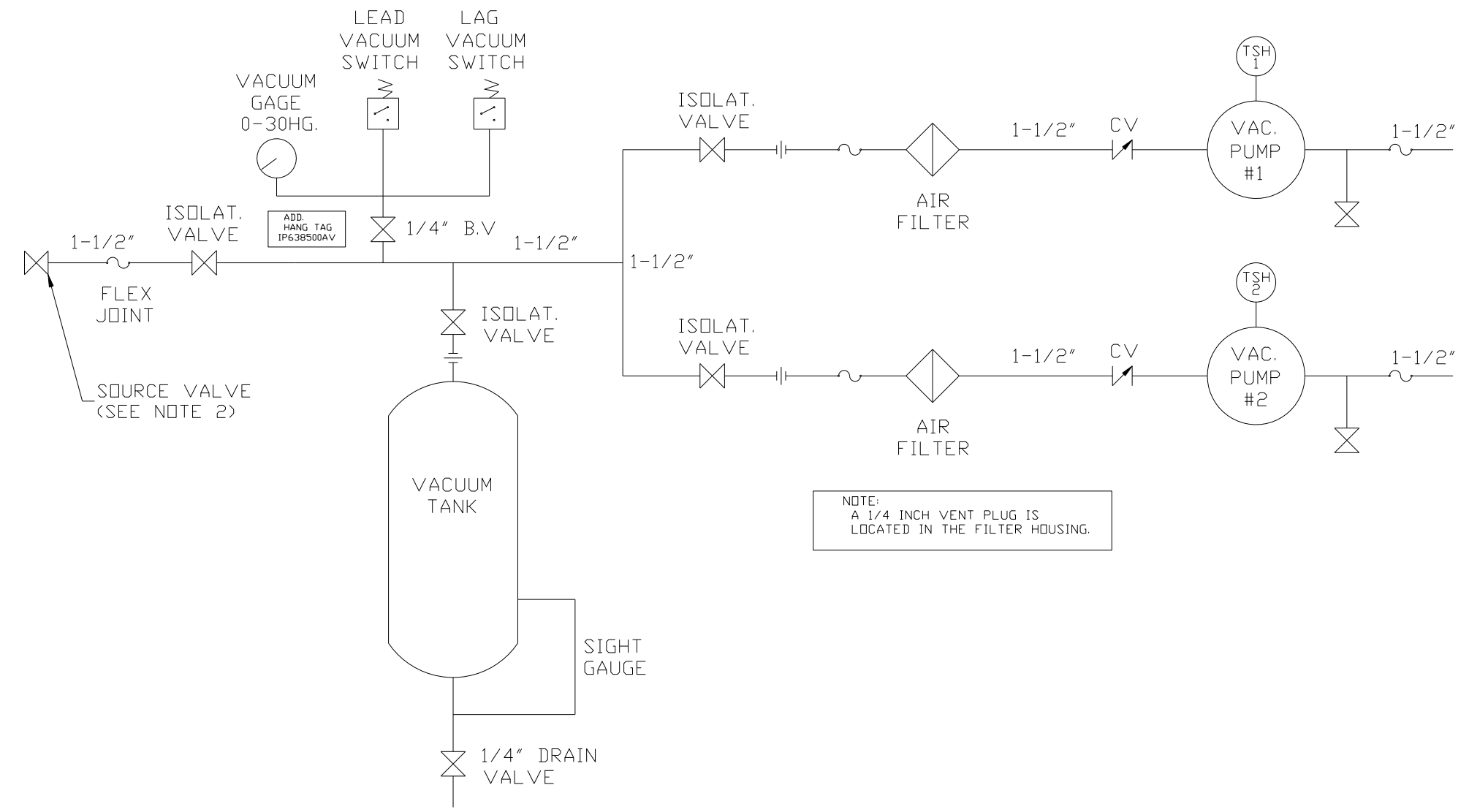
NOTE: SYSTEM DESIGNED IN COMPLIANCE WITH U.S. NFPA '99, LATEST EDITION.

<b>SYMBOL LEGEND</b> ⊖ = MINUS DRAFT ⊕ = PLUS DRAFT ⊕ = ADDITIONAL CONTROL REQ'D ⊕ = BRINELL HARDNESS		Drawings to conform to the current revision of the following ANSI standards: Y14.3 Multi and sectional view dgs. Y14.5M Dimensioning and tolerancing	
TOLERANCES NOT SPECIFIED .XX ± .XXX ± << DEG > ±		<b>DO NOT SCALE DRAWING FOR DIMENSIONS</b> AUTOCAD REL2008 LT INCH Sheet 1 of 2 SCALE 1:12	
<b>CONFIDENTIAL DISCLOSURE</b> This drawing is the property of POWEREX, INC. of the SCOTT FETZER COMPANY and subject to return on demand. Its contents are confidential and must not be copied or submitted to outside parties for use or examination.			
DRAWN BY AEK		CHECKED BY GES	
APPROVED BY 2/27/08		ENGINEERING DMS 2/27/08	
MATERIAL N/A		<b>POWEREX</b> 150 PRODUCTION DRIVE, HARRISON, OHIO 45030 Ph: 888-769-7979 FAX: (513) 367-3125	
PART NAME DUPLEX VACUUM		DWG NO VVTD0153	
1.5HP 80 GAL VERT		SIZE D	

NOTE: A MINIMUM OF 24" CLEARANCE IS RECOMMENDED AROUND THE ENTIRE UNIT.

8 7 6 5 4 3 2 1

REV	ZONE	REVISION	DATE	ECN	NAME	CHKD
B-1	ALL	RELEASE TO PRODUCTION	2/27/08	21881	AEK	GES
B-2	ALL	UPDATED LAYOUT & FLOW TO CURRENT STANDARD	3/17/08	21881	AEK	GES
B-3	1 ALL	REMOVED VERT VAC FRAME FROM DESIGN	4/21/08	21881	AEK	GES
C-1	1 ALL	REMOVED VACUUM SWITCHES FROM CONTROL PANEL	10/26/09	22127	AEK	GES
D-1	2 CS 2 CS	ADDED BRIP LEG REMOVED LOW OIL LIGHT OPTION	3/16/10	22390	AEK	DMS
E-1	1 ALL	UPDATED TO ARO630 RECEIVER	5/7/10	22348	AEK	GES
F-1	ALL	ADDED P&MI SHEETS	12/12/11	22610	AEK	GES
G-1	1 ALL	CORRECTED INLET SPUG LOCATION ON STANDARD CONFIGURATION	6/18/12	22723	AEK	GES
H-1	2 CS 2 ALL	ADDED SIGHT GAUGE ADDED SOURCE VALVE INFORMATION	3/14/13	PXEC0030	AEK	GES
J-1	1 ALL	UPDATED TO NEW RA SERIES PUMP	6/24/16	PXEC0148	AEK	GES



NOTE:  
A 1/4 INCH VENT PLUG IS  
LOCATED IN THE FILTER HOUSING.

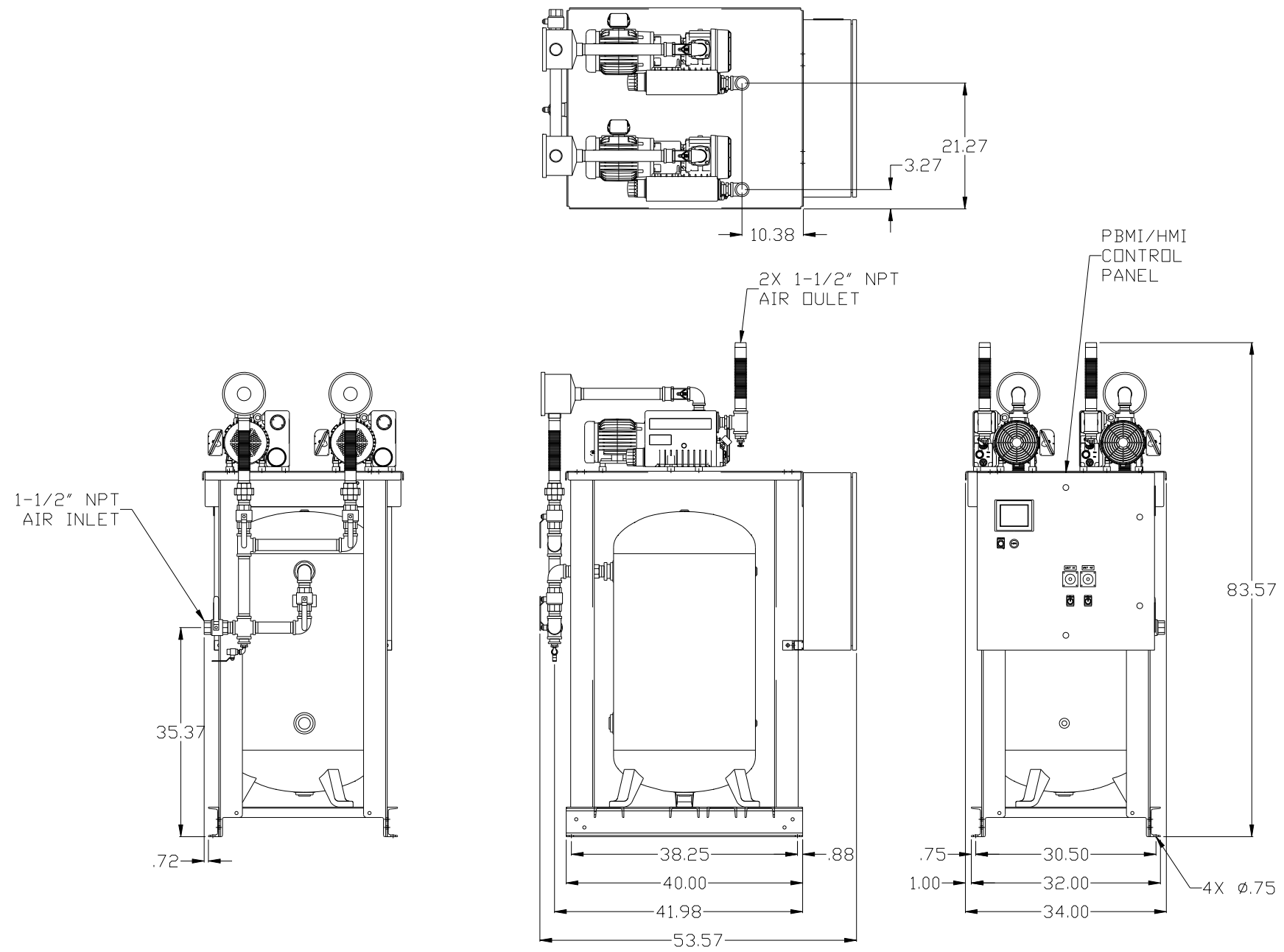
LEGEND

	TEMP. SWITCH		VACUUM SWITCH
	AIR FILTER		CHECK VALVE
	BALL VALVE		FLEX LINE
			UNION

NOTES:  
1) TSH - TEMPERATURE SWITCH HIGH  
2) PER NFPA THE SYSTEM WILL REQUIRE A SOURCE VALVE (SUPPLIED BY OTHERS).

SYMBOL LEGEND			ADDITIONAL CONTROL REQ'D	Drawings to conform to the current revision of the following ANSI standards:	
	MINUS DRAFT		BRINELL HARDNESS	Y14.3 Multi and sectional view dsgs. Y14.5M Dimensioning and tolerancing	
TOLERANCES NOT SPECIFIED		AUTOCAD REL2008 LT	DO NOT SCALE DRAWING FOR DIMENSIONS		
.XX ±	.XXX ±	INCH	Sheet 2 of 2	SCALE 1:12	
CONFIDENTIAL DISCLOSURE This drawing is the property of POWEREX, INC. OF THE SCOTT FETZER COMPANY and subject to return on demand. Its contents are confidential and must not be copied or submitted to outside parties for use or examination.					
DRAWN BY	CHECKED BY	APPROVED BY	ENGINEERING	MFG/MRKTG	
AEK	GES	DMS	RJR		
2/27/08	2/27/08	2/27/08	2/27/08		
MATERIAL		N/A			
PART NAME		DUPLX VAC TANK MOUNT			
FLOW SCHEMATIC		VVTDO153			
DWG NO		VVTDO153		SIZE D	

REV	ZONE	REVISION	DATE	ECN	NAME	CHKD
F-1	ALL	ADDED PBMI SHEETS	12/12/11	22610	AEK	GES
G-1	1 ALL	CORRECTED INLET SPUD LOCATION ON STANDARD CONFIGURATION	6/18/12	22723	AEK	GES
H-1	2 CS	ADDED SIGHT GAUGE	3/14/13	PXEC0030	AEK	GES
	2 ALL	ADDED SOURCE VALVE INFORMATION				
J-1	1 ALL	UPDATED TO NEW RA SERIES PUMP	6/24/16	PXEC0148	AEK	GES

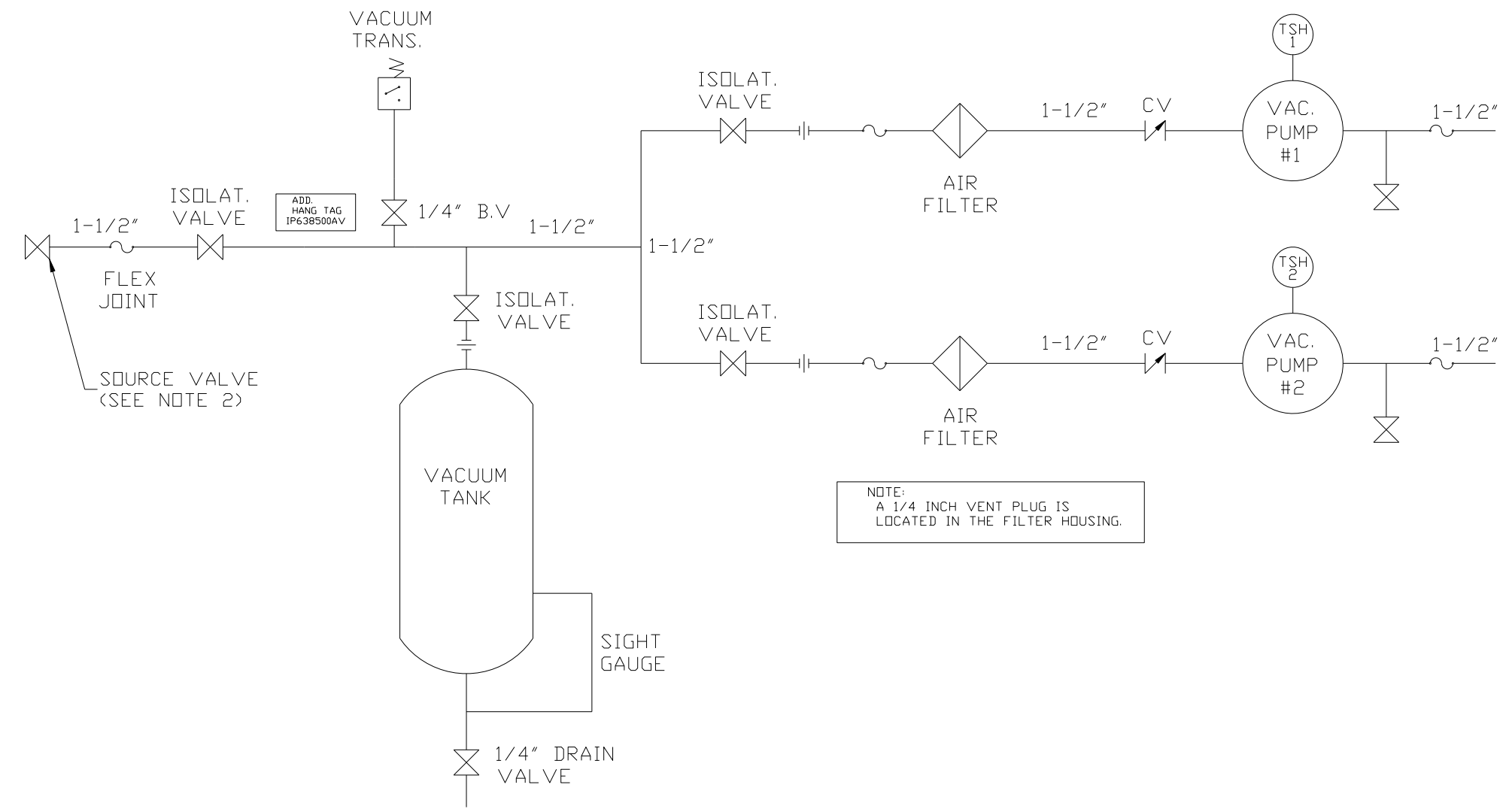


NOTE: SYSTEM DESIGNED IN COMPLIANCE WITH U.S. NFPA '99, LATEST EDITION.

NOTE: A MINIMUM OF 24" CLEARANCE IS RECOMMENDED AROUND THE ENTIRE UNIT.

SYMBOL LEGEND		= ADDITIONAL CONTROL REQ'D		Drawings to conform to the current revision of the following ANSI standards:	
⊖	MINUS DRAFT	⊕	PLUS DRAFT	⊖	BRINELL HARDNESS
TOLERANCES NOT SPECIFIED		AUTOCAD REL2008 LT		DO NOT SCALE DRAWING FOR DIMENSIONS	
.XX ±		INCH		Sheet 1 of 2	SCALE 1:12
CONFIDENTIAL DISCLOSURE: This drawing is the property of POWEREX, INC. of the SCOTT FETZER COMPANY and subject to return on demand. Its contents are confidential and must not be copied or submitted to outside parties for use or examination.					
DRAWN BY		CHECKED BY		APPROVED BY	
AEK		GES		DMS RJR	
12/12/11		12/12/11		12/12/11	
MATERIAL		N/A		 150 PRODUCTION DRIVE, HARRISON, OHIO 45030 Ph: 888-769-7979 FAX: (513) 367-3125	
PART NAME		DUPLEX VACUUM		SIZE	
1.5HP 80 GAL VERT		DWG NO		VVTDO153	

REV	ZONE	REVISION	DATE	ECN	NAME	CHKD
F-1	ALL	ADDED PBM1 SHEETS	12/12/11	22610	AEK	GES
G-1	1 ALL	CORRECTED INLET SPUD LOCATION ON STANDARD CONFIGURATION	6/18/12	22723	AEK	GES
H-1	2 CS 2 ALL	ADDED SIGHT GAUGE ADDED SOURCE VALVE INFORMATION	3/14/13	PXEC0030	AEK	GES
J-1	1 ALL	UPDATED TO NEW RA SERIES PUMP	6/24/16	PXEC0148	AEK	GES



NOTE:  
A 1/4 INCH VENT PLUG IS  
LOCATED IN THE FILTER HOUSING.

LEGEND

	TEMP. SWITCH		VACUUM SWITCH
	AIR FILTER		CHECK VALVE
	BALL VALVE		FLEX LINE
			UNION

NOTES:  
1) TSH - TEMPERATURE SWITCH HIGH  
2) PER NFPA THE SYSTEM WILL REQUIRE A SOURCE VALVE (SUPPLIED BY OTHERS).

<b>SYMBOL LEGEND</b> = MINUS DRAFT = PLUS DRAFT = ADDITIONAL CONTROL REQ'D = BRINELL HARDNESS		Drawings to conform to the current revision of the following ANSI standards: Y14.3 Multi and sectional view dgs. Y14.5M Dimensioning and tolerancing	
TOLERANCES NOT SPECIFIED .XX ± .XXX ± <math>\angle</math> (DEG.) ±		AUTOCAD REL2008 LT <b>INCH</b> DO NOT SCALE DRAWING FOR DIMENSIONS Sheet 2 of 2 SCALE 1:12	
<b>CONFIDENTIAL DISCLOSURE</b> This drawing is the property of POWEREX, INC. of the SCOTT FETZER COMPANY and subject to return on demand. Its contents are confidential and must not be copied or submitted to outside parties for use or examination.			
DRAWN BY AEK		CHECKED BY GES	
12/12/11		12/12/11 12/12/11 12/12/11	
MATERIAL N/A		 150 PRODUCTION DRIVE, HARRISON, OHIO 45030 Ph: 888-769-7979 FAX: (513) 367-3125	
PART NAME VACUUM TANKMOUNT DUPLEX		DWG NO VVTD0153	
		SIZE D	