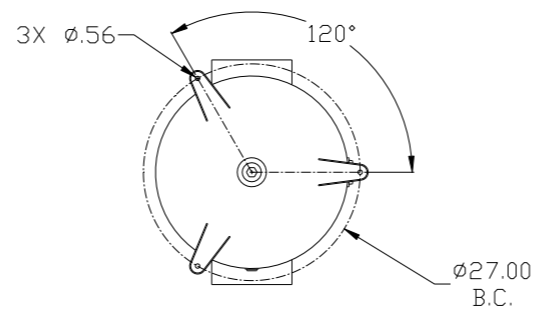
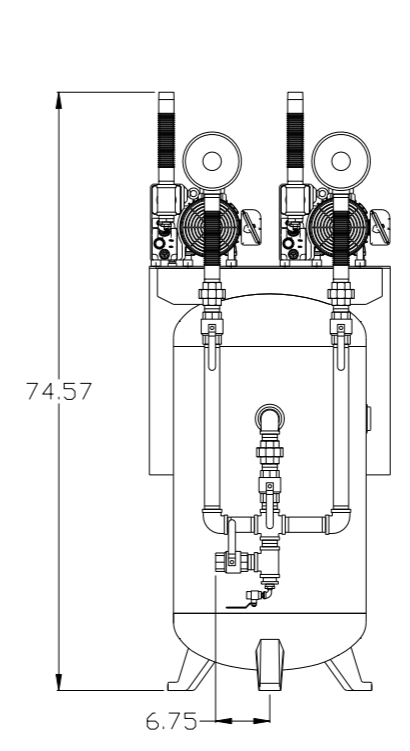
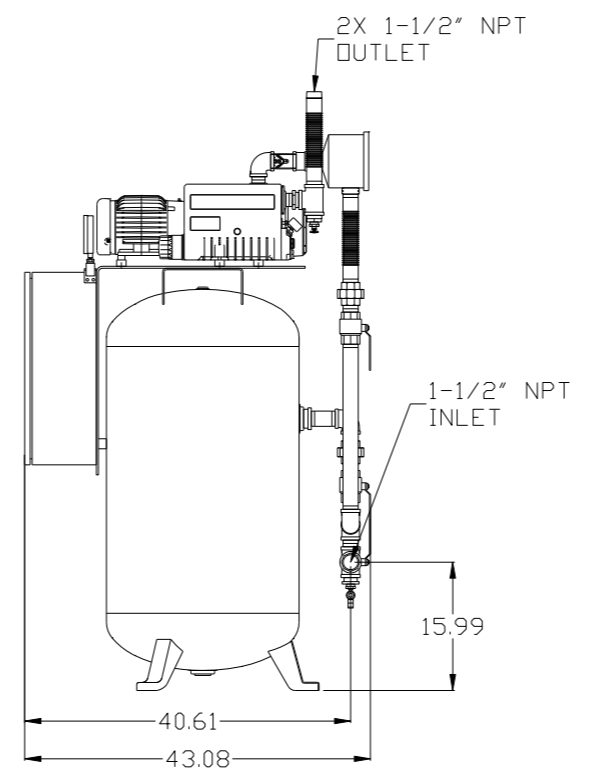
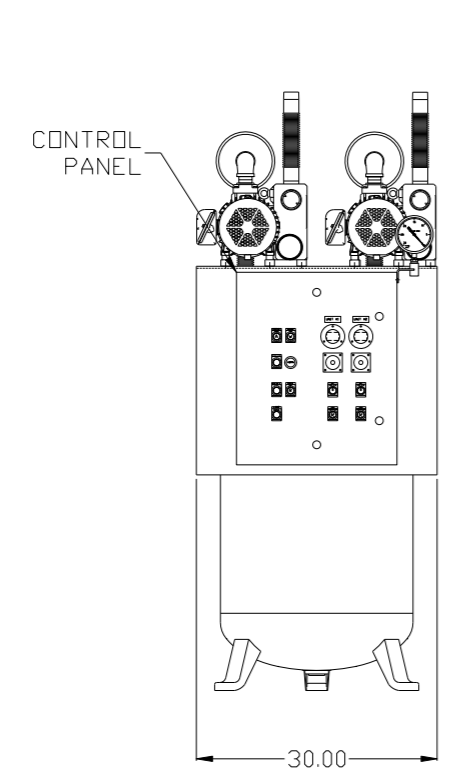
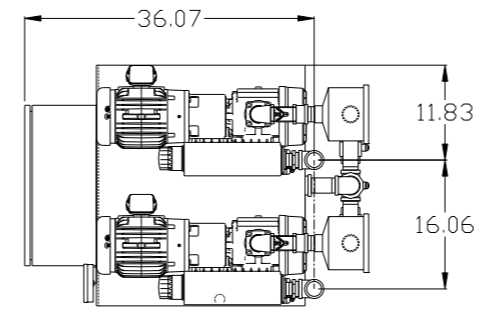


8 7 6 5 4 3 2 1

REV	ZONE	REVISION	DATE	ECN	NAME	CHKD
B-1	ALL	RELEASE FOR PRODUCTION	2/14/08	21881	AEK	GES
B-2	ALL	UPDATED LAYOUT & FLOW TO CURRENT STANDARD	3/17/08	21881	AEK	GES
B-3	1 ALL	REMOVED VERT VAC FRAME FROM DESIGN	4/21/08	21881	AEK	GES
C-1	2 ALL	REMOVED LOW OIL LEVEL SWITCH OPTION	8/21/08	21907	AEK	GES
C-2	AS. DS	ADDED UNIONS FOR DISASSEMBLY DURING INSTALLATION	8/27/08	21907	AEK	GES
D-1	1 ALL	CORRECTED MOUNTING PLATE & PUMP LOCATION PER PRODUCTION REQUEST	1/9/09	22127	AEK	DMS
D-2	1 ALL	REMOVED VACUUM SWITCHES FROM CONTROL PANEL	10/26/09	22127	AEK	GES
E-1	2 CS, DS	ADDED DRIP LEG	3/16/10	22390	AEK	DMS
F-1	1 ALL	UPDATED TO ARO630 RECEIVER	5/7/10	22348	AEK	GES
G-1	ALL	ADDED PBM SHEETS	12/12/11	22610	AEK	GES
H-1	1 ALL	CORRECTED INLET SPUD LOCATION ON STANDARD CONFIGURATION	6/18/12	22723	AEK	GES
J-1	2 CS	ADDED SIGHT GAUGE	11/15/12	22723	AEK	DMS
K-1	ALL	MADE HIGH TEMP STANDARD ON BASIC CONTROLS	10/17/13	PXEC0030	AEK	GES
L-1	1 ALL	UPDATED TO NEW RA SERIES PUMP	8/29/16	PXEC0148	AEK	GES



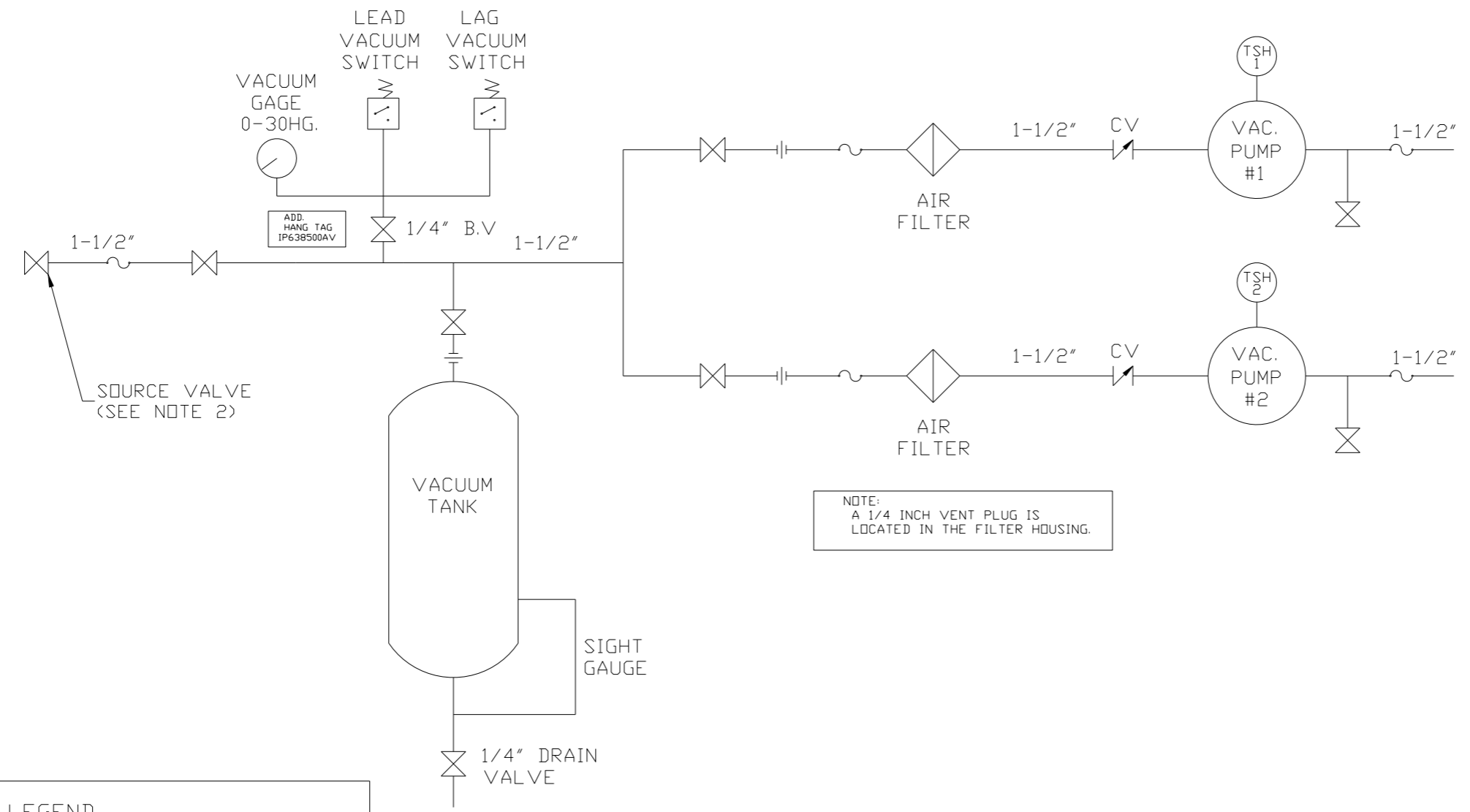
NOTE: SYSTEM DESIGNED IN COMPLIANCE WITH U.S. NFPA '99, LATEST EDITION.

SYMBOL LEGEND ⊖ = MINUS DRAFT ⊕ = PLUS DRAFT HRC = ADDITIONAL CONTROL REQ'D HB = BRINELL HARDNESS		Drawings to conform to the current revision of the following ANSI standards: Y14.3 Multi and sectional view dgs. Y14.5M Dimensioning and tolerancing	
TOLERANCES NOT SPECIFIED .XX ± .XXX ± << DEG > ±		AUTOCAD REL2008 LT INCH	
DO NOT SCALE DRAWING FOR DIMENSIONS Sheet 1 of 2 SCALE 1:12		CONFIDENTIAL DISCLOSURE This drawing is the property of POWEREX, INC. of the SCOTT FETZER COMPANY and subject to return on demand. Its contents are confidential and must not be copied or submitted to outside parties for use or examination.	
MATERIAL N/A		DRAWN BY: AEK CHECKED BY: GES APPROVED BY: ENGINEERING DATES: 2/14/08, 2/14/08, 2/14/08, 2/14/08	
PART NAME DUPLEX VACUUM 2. OHP 80 GAL VERT		 150 PRODUCTION DRIVE, HARRISON, OHIO 45030 Ph: 888-769-7979 FAX: (513) 367-3125	
DWG NO VVTD0203		SIZE D	

NOTE: A MINIMUM OF 24" CLEARANCE IS RECOMMENDED AROUND THE ENTIRE UNIT.

8 7 6 5 4 3 2 1

REV	ZONE	REVISION	DATE	ECN	NAME	CHKD
B-1	ALL	RELEASE TO PRODUCTION	2/27/08	21881	AEK	GES
B-2	ALL	UPDATED LAYOUT & FLOW TO CURRENT STANDARD	3/17/08	21881	AEK	GES
B-3	1 ALL	REMOVED VERT VAC FRAME FROM DESIGN	4/21/08	21881	AEK	GES
C-1	2 ALL	REMOVED LOW OIL LEVEL SWITCH OPTION	8/21/08	21907	AEK	GES
C-2	AS. DS	ADDED UNIONS FOR DISASSEMBLY DURING INSTALLATION	8/27/08	21907	AEK	GES
D-1	1 ALL	CORRECTED MOUNTING PLATE & PUMP LOCATION PER PRODUCTION REQUEST	1/9/09	22127	AEK	DMS
D-2	1 ALL	REMOVED VACUUM SWITCHES FROM CONTROL PANEL	10/26/09	22127	AEK	GES
E-1	2 C3.03	ADDED DRIP LEG	3/16/10	22390	AEK	DMS
F-1	1 ALL	UPDATED TO AR0630 RECEIVER	5/7/10	22348	AEK	GES
G-1	ALL	ADDED P&ID SHEETS	12/12/11	22610	AEK	GES
H-1	1 ALL	CORRECTED INLET SPUR LOCATION ON STANDARD CONFIGURATION	6/18/12	22723	AEK	GES
J-1	2 CS	ADDED SIGHT GAUGE ADDED SOURCE VALVE INFORMATION	11/15/12	22723	AEK	DMS
K-1	ALL	MADE HIGH TEMP STANDARD ON BASIC CONTROLS	10/17/13	PXEC0030	AEK	GES
L-1	1 ALL	UPDATED TO NEW RA SERIES PUMP	8/29/16	PXEC0148	AEK	GES



NOTE:
A 1/4 INCH VENT PLUG IS
LOCATED IN THE FILTER HOUSING.

LEGEND

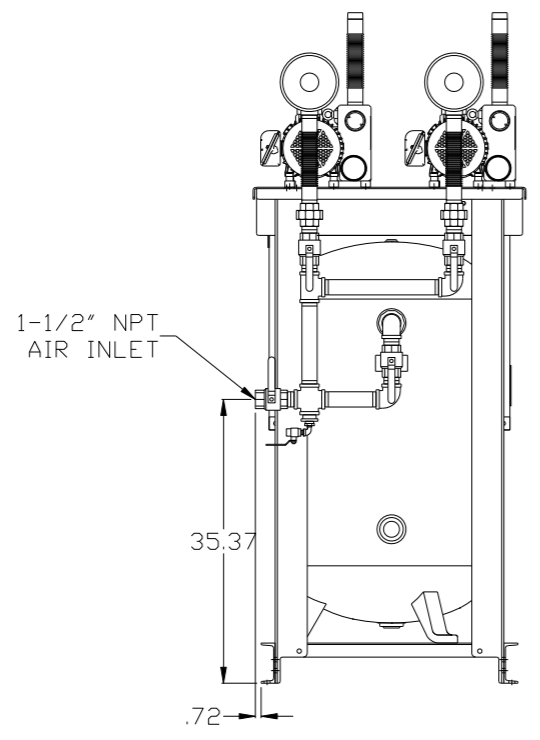
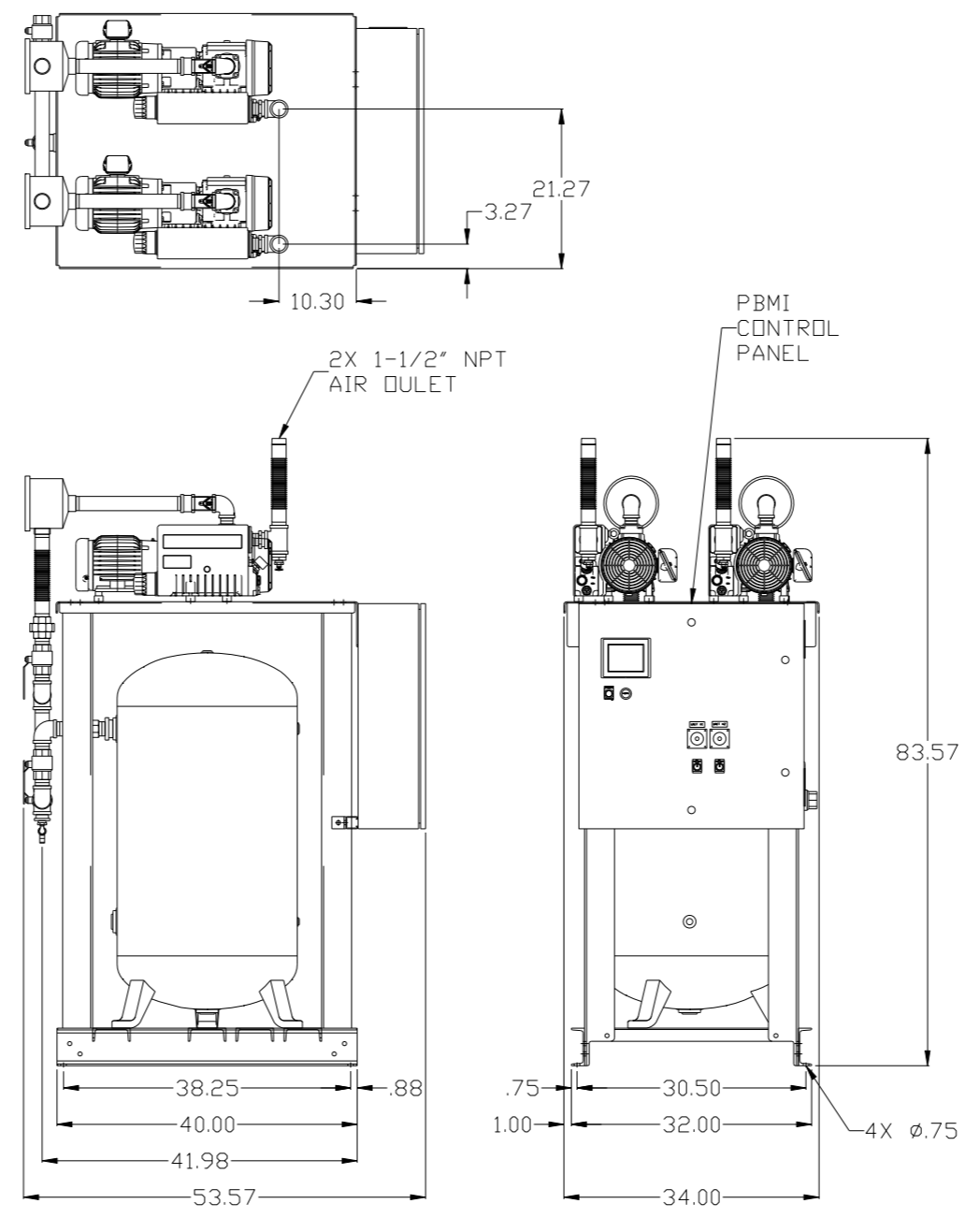
	TEMP. SWITCH		VACUUM SWITCH
	LOW OIL LEVEL SW.		CHECK VALVE
	AIR FILTER		FLEX LINE
	BALL VALVE		UNION
	SOLENOID VALVE		

NOTES:
1) TSH - TEMPERATURE SWITCH HIGH
2) PER NFPA THE SYSTEM WILL REQUIRE A SOURCE VALVE (SUPPLIED BY OTHERS).

SYMBOL LEGEND			= ADDITIONAL CONTROL REQ'D		Drawings to conform to the current revision of the following ANSI standards: Y14.3 Multi and sectional view dsgs. Y14.5M Dimensioning and tolerancing
	= MINUS DRAFT		= BRINELL HARDNESS		
TOLERANCES NOT SPECIFIED		AUTOCAD REL2008 LT	DO NOT SCALE DRAWING FOR DIMENSIONS		
.XX ±	.XXX ±	INCH	Sheet 2 of 2	SCALE 1:12	
CONFIDENTIAL DISCLOSURE This drawing is the property of POWEREX, INC. OF THE SCOTT FETZER COMPANY and subject to return on demand. Its contents are confidential and must not be copied or submitted to outside parties for use or examination.					
DRAWN BY	CHECKED BY	APPROVED BY	ENGINEERING	MFG/MRKTG	
AEK	GES	DMS	RJR		
2/27/08	2/27/08	2/27/08	2/27/08	2/27/08	
MATERIAL		N/A			
PART NAME		DUPLX VAC TANK MOUNT			
FLOW SCHEMATIC		VVT0203			
SIZE		D			

8 7 6 5 4 3 2 1

REV	ZONE	REVISION	DATE	ECN	NAME	CHKD
G-1	ALL	ADDED PBMI SHEETS	12/12/11	22610	AEK	GES
H-1	1 ALL	CORRECTED INLET SPUD LOCATION ON STANDARD CONFIGURATION	6/18/12	22723	AEK	GES
J-1	2 CS 2 ALL	ADDED SIGHT GAUGE ADDED SOURCE VALVE INFORMATION	11/15/12	22723	AEK	DMS
K-1	ALL	MADE HIGH TEMP STANDARD DN BASIC CONTROLS	10/17/13	PXEC0030	AEK	GES
L-1	1 ALL	UPDATED TO NEW RA SERIES PUMP	8/29/16	PXEC0148	AEK	GES



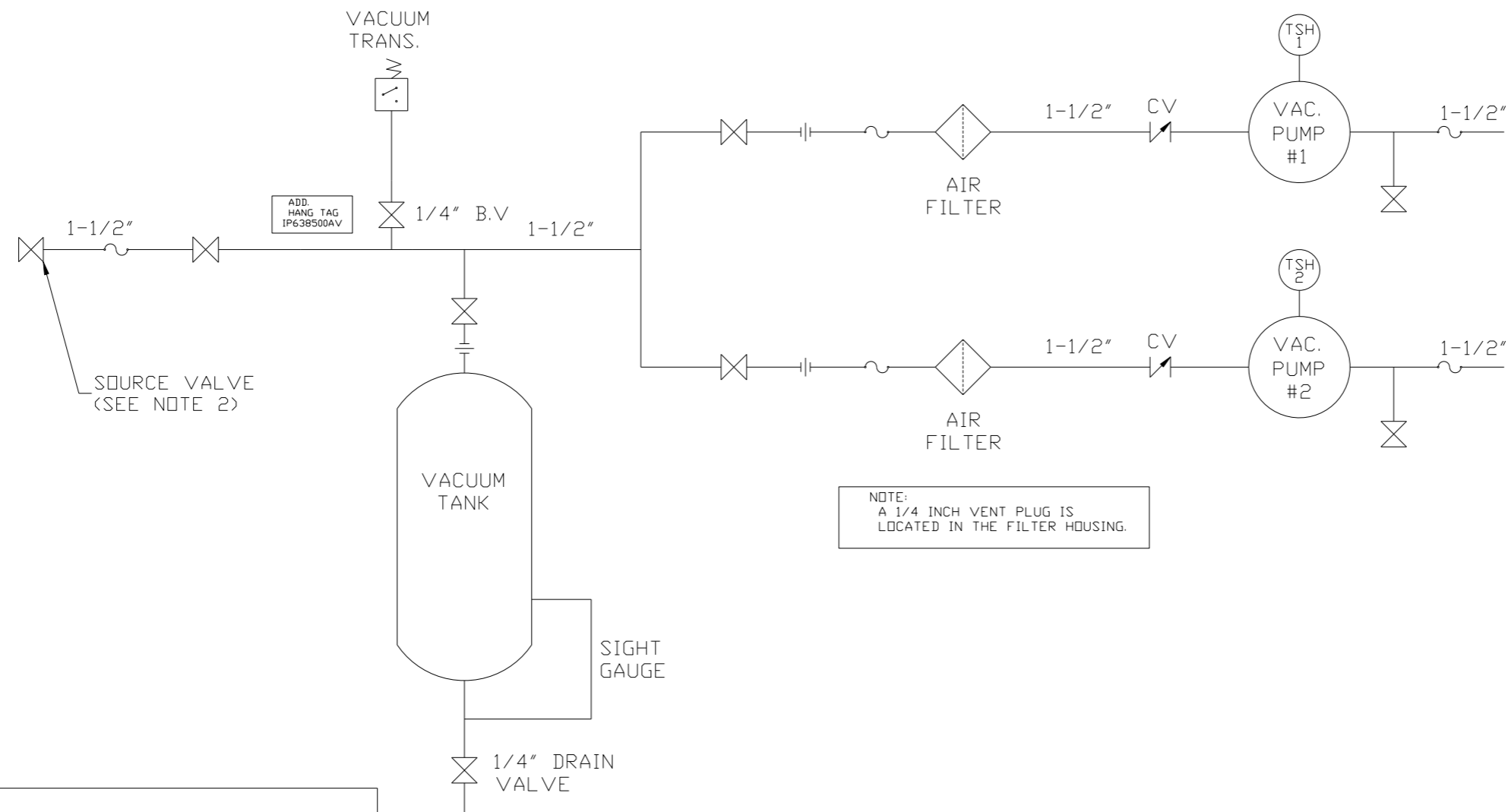
NOTE: SYSTEM DESIGNED IN COMPLIANCE WITH U.S. NFPA '99, LATEST EDITION.

SYMBOL LEGEND ⊖ = MINUS DRAFT ⊕ = PLUS DRAFT ⊕ = ADDITIONAL CONTROL REQ'D HRC = BRINELL HARDNESS		Drawings to conform to the current revision of the following ANSI standards: Y14.3 Multi and sectional view dgs. Y14.5M Dimensioning and tolerancing	
TOLERANCES NOT SPECIFIED .XX ± .XXX ± \angle (DEG) ±		DO NOT SCALE DRAWING FOR DIMENSIONS SCALE: 1:12 Sheet 1 of 2	
CONFIDENTIAL DISCLOSURE This drawing is the property of POWEREX, INC. of the SCOTT FETZER COMPANY and subject to return on demand. Its contents are confidential and must not be copied or submitted to outside parties for use or examination.		DRAWN BY: AEK CHECKED BY: GES APPROVED BY: DMS, RJR 12/12/11 12/12/11 12/12/11 12/12/11	
MATERIAL: N/A		POWEREX 150 PRODUCTION DRIVE, HARRISON, OHIO 45030 Ph: 888-769-7979 FAX: (513) 367-3125	
PART NAME: DUPLEX VACUUM 2HP 80 GAL VERT		DWG NO: VVTD0203 SIZE: D	

NOTE: A MINIMUM OF 24" CLEARANCE IS RECOMMENDED AROUND THE ENTIRE UNIT.

8 7 6 5 4 3 2 1

REV	ZONE	REVISION	DATE	ECN	NAME	CHKD
G-1	ALL	ADDED PBM1 SHEETS	12/12/11	22610	AEK	GES
H-1	1 ALL	CORRECTED INLET SPUD LOCATION ON STANDARD CONFIGURATION	6/18/12	22723	AEK	GES
J-1	2 CS 2 ALL	ADDED SIGHT GAUGE ADDED SOURCE VALVE INFORMATION	11/15/12	22723	AEK	DMS
K-1	ALL	MADE HIGH TEMP STANDARD DN BASIC CONTROLS	10/17/13	PXEC0030	AEK	GES
L-1	1 ALL	UPDATED TO NEW RA SERIES PUMP	8/29/16	PXEC0148	AEK	GES



NOTE:
A 1/4 INCH VENT PLUG IS
LOCATED IN THE FILTER HOUSING.

LEGEND

	TEMP. SWITCH		VACUUM SWITCH
	LOW OIL LEVEL SW.		CHECK VALVE
	AIR FILTER		FLEX LINE
	BALL VALVE		UNION
	SOLENOID VALVE		

NOTES:
1) TSH - TEMPERATURE SWITCH HIGH
2) PER NFPA THE SYSTEM WILL REQUIRE A SOURCE VALVE (SUPPLIED BY OTHERS).

SYMBOL LEGEND			= ADDITIONAL CONTROL REQ'D		Drawings to conform to the current revision of the following ANSI standards:		
⊖ = MINUS DRAFT			= BRINELL HARDNESS		Y14.3 Multi and sectional view dsgs. Y14.5M Dimensioning and tolerancing		
⊕ = PLUS DRAFT						DO NOT SCALE DRAWING FOR DIMENSIONS	
TOLERANCES NOT SPECIFIED		AUTOCAD REL2008 LT	Sheet 2 of 2		SCALE 1:12		
.XX ±							
.XXX ±							
<ANGLE> ±							
CONFIDENTIAL DISCLOSURE		DRAWN BY		CHECKED BY	APPROVED BY		
This drawing is the property of POWEREX, INC. of the SCOTT FETZER COMPANY and subject to return on demand. Its contents are confidential and must not be copied or submitted to outside parties for use or examination.		AEK		GES	DMS RJR		
		12/12/11		12/12/11	12/12/11 12/12/11		
MATERIAL		N/A				150 PRODUCTION DRIVE, HARRISON, OHIO 45030 Ph: 888-769-7979 FAX: (513) 367-3125	
PART NAME		DUPLEX VAC TANK MOUNT		DWG NO		SIZE	
FLOW SCHEMATIC				VVTD0203		D	