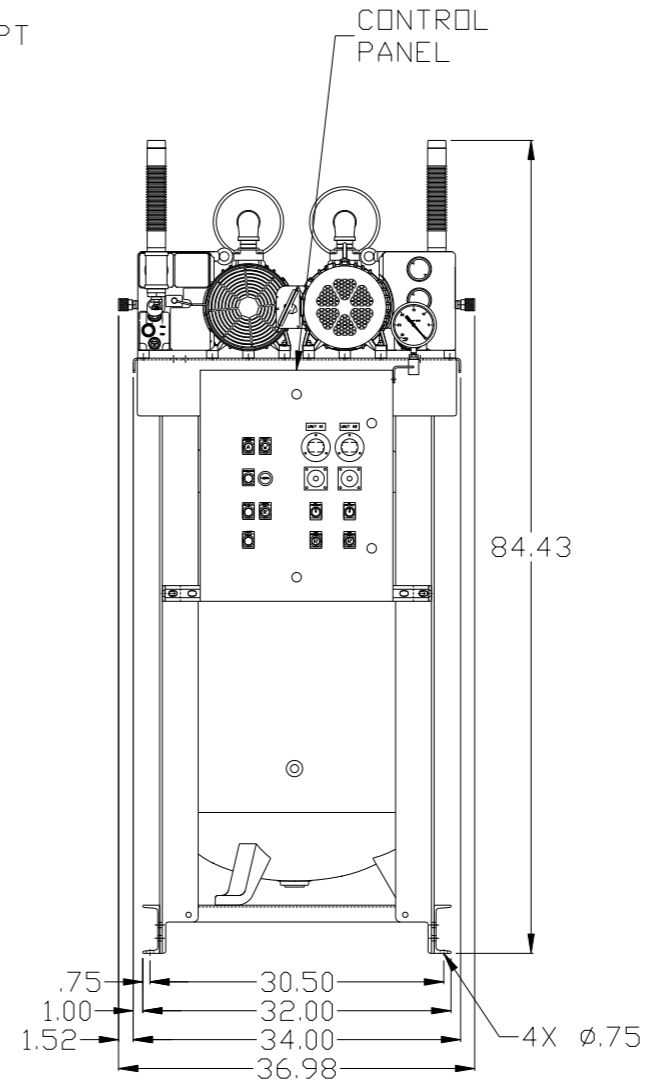
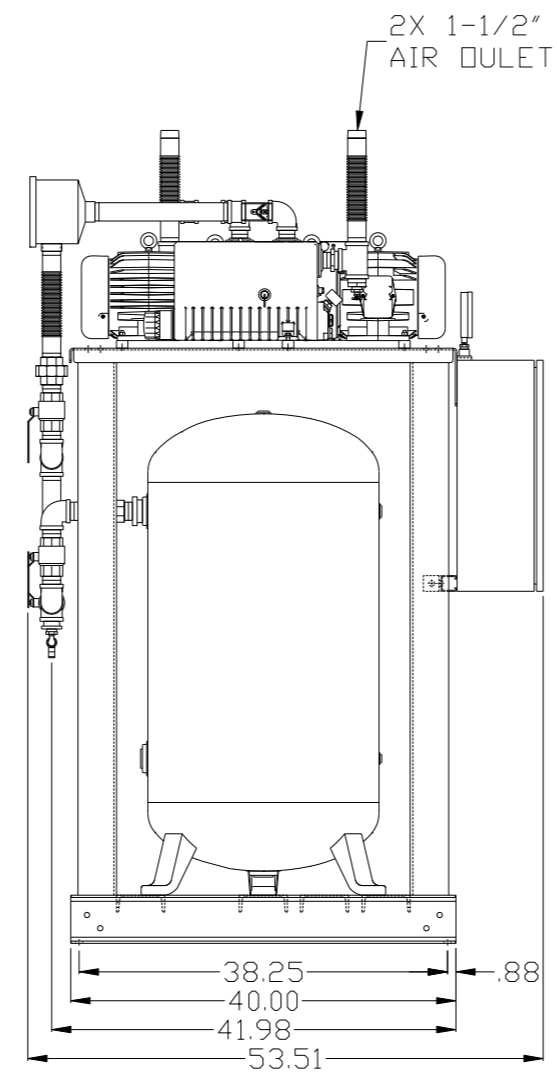
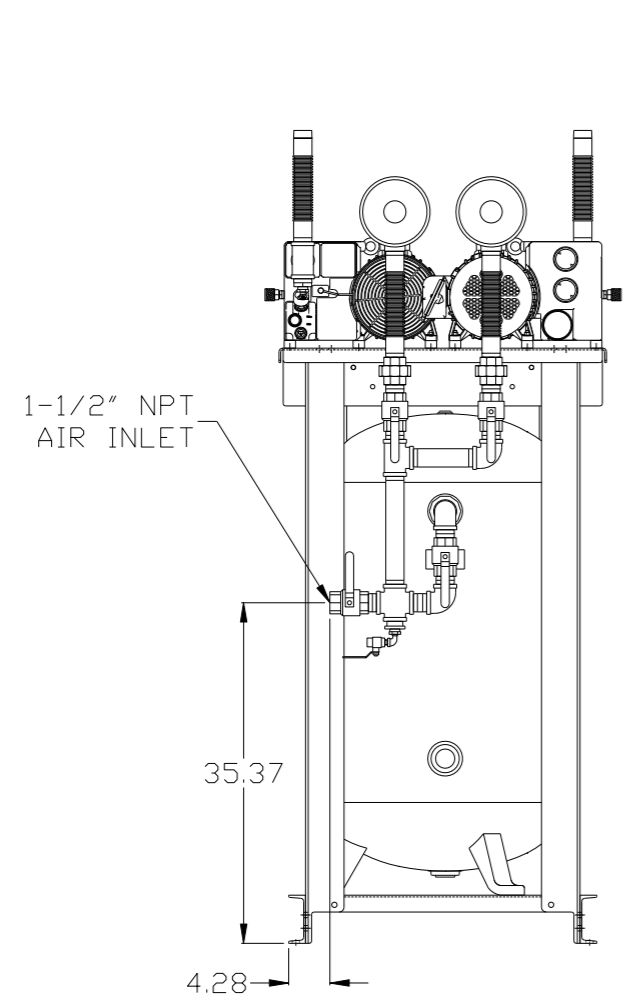
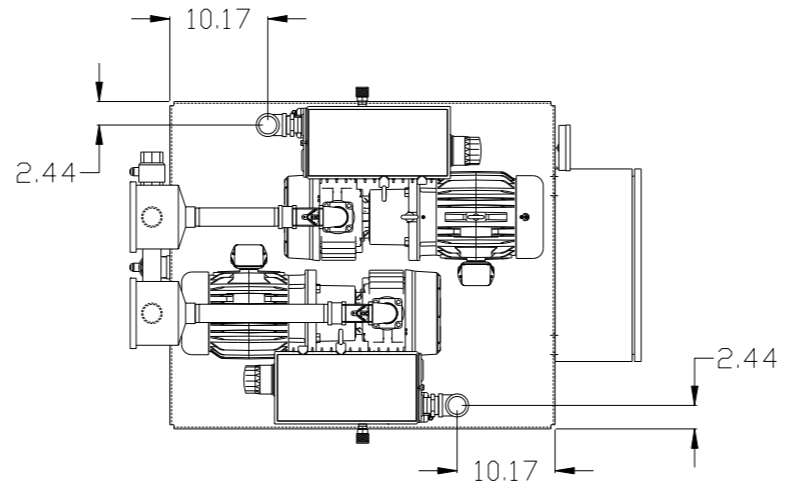


8 7 6 5 4 3 2 1

REV	ZONE	REVISION	DATE	ECN	NAME	CHKD
B-1	ALL	RELEASE FOR PRODUCTION	12/17/07	21668	AEK	DMS
C-1	2 B6 1 ALL	ADDED HANG TAG AND ISO VALVE REBREW LAYOUT TO CURRENT STANDARD.	2/27/08	21881	AEK	GES
C-2	C-4	REMOVED VENT PLUG ADDED FILTER NOTE	02/29/08	21881	DMS	GES
C-3	C-6	REMOVED SIGHT GAUGE	07/17/08	21881	DMS	GES
C-4	2 ALL	REMOVED LOW OIL LIGHT OPTION	8/14/08	21907	AEK	GES
D-1	ALL	CHANGED BUILD TO REFLECT AMB00100AJ FRAME ASSY	3/8/09	22170	AEK	GES
E-1	1 ALL	REMOVED VACUUM SWITCHES FROM CONTROL PANEL	10/26/09	22127	AEK	GES
F-1	2 C3.3	ADDED DRIP LEG	3/16/10	22348	AEK	DMS
G-1	ALL	ADDED P&MI SHEETS	12/12/11	22610	AEK	GES
H-1	2 ALL	MOVED TEMP SWITCH TO PUMP	4/23/12	22772	AEK	DMS
J-1	2 CS 2 ALL	ADDED SIGHT GAUGE ADDED SOURCE VALVE INFORMATION	10/18/12	22723	AEK	DMS
K-1	ALL	MADE HIGH TEMP STANDARD DN BASIC CONTROLS	7/16/13	PXEC0048	AEK	GES
L-1	1 ALL	UPDATED TO NEW RA SERIES PUMP	7/1/16	PXEC0048	AEK	GES



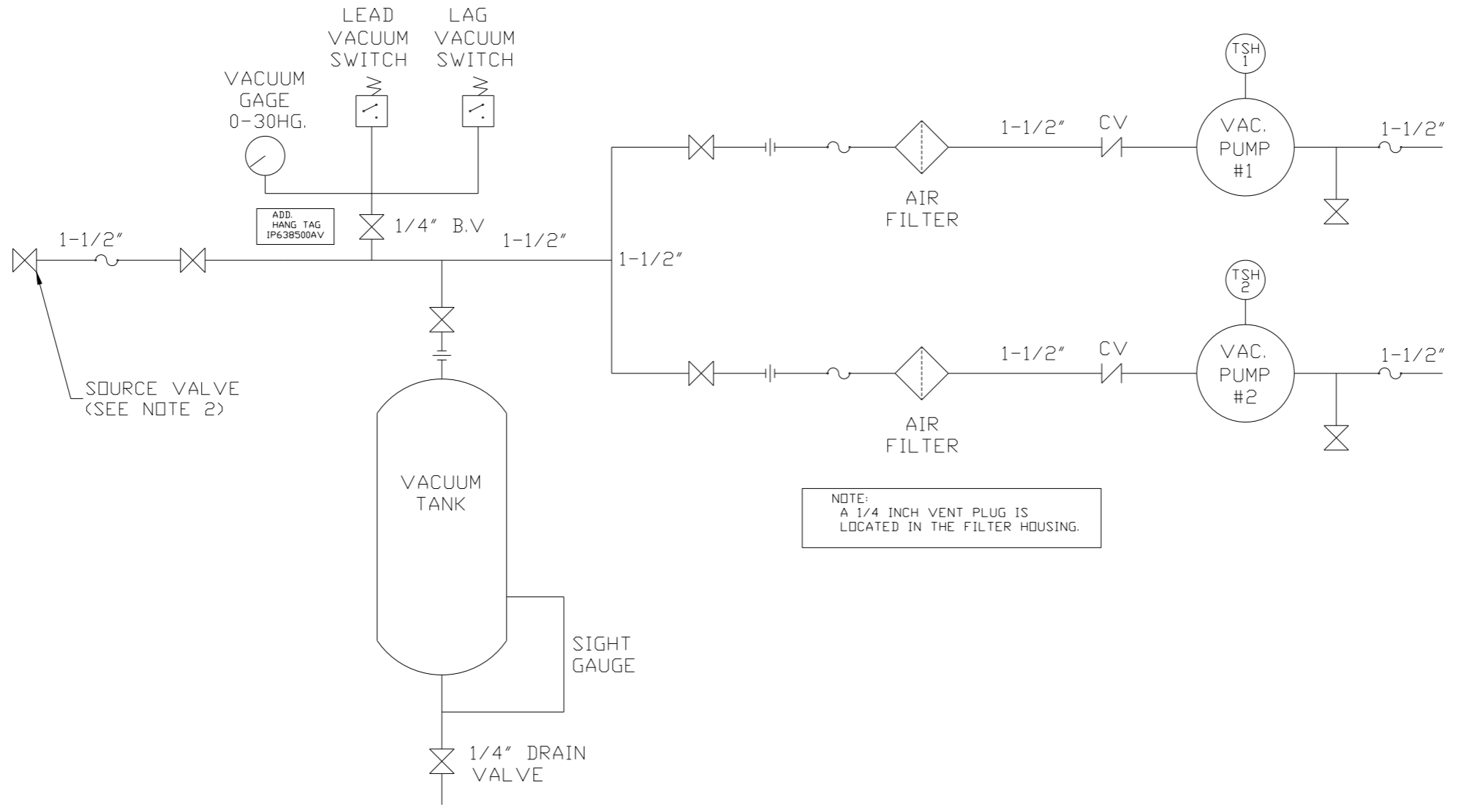
NOTE: A MINIMUM OF 24" CLEARANCE IS RECOMMENDED AROUND THE ENTIRE UNIT.

NOTE: SYSTEM DESIGNED IN COMPLIANCE WITH U.S. NFPA '99, LATEST EDITION.

SYMBOL LEGEND ⊖ = MINUS DRAFT ⊕ = PLUS DRAFT ⊕ = ADDITIONAL CONTROL REQ'D HRC = BRINELL HARDNESS		Drawings to conform to the current revision of the following ANSI standards: Y14.3 Multi and sectional view dgs. Y14.5M Dimensioning and tolerancing	
TOLERANCES NOT SPECIFIED .XX ± .XXX ± << DEG >> ±		AUTOCAD REL2008 LT INCH	
DO NOT SCALE DRAWING FOR DIMENSIONS Sheet 1 of 2		SCALE 1:10	
CONFIDENTIAL DISCLOSURE This drawing is the property of POWEREX, INC. of the SCOTT FETZER COMPANY and subject to return on demand. Its contents are confidential and must not be copied or submitted to outside parties for use or examination.			
DRAWN BY AEK	CHECKED BY DMS	APPROVED BY DMS	MFG/MKTG JJ
12/17/07	12/17/07	12/17/07	12/17/07
MATERIAL N/A		 150 PRODUCTION DRIVE, HARRISON, OHIO 45030 Ph: 888-769-7979 FAX: (513) 367-3125	
PART NAME DUPLEX VACUUM 3HP 80 GAL VERT		DWG NO VVTDO303	SIZE D

8 7 6 5 4 3 2 1

REV	ZONE	REVISION	DATE	ECN	NAME	CHKD
B-1	ALL	RELEASE FOR PRODUCTION	12/17/07	21668	AEK	DMS
C-1	2 B6 1 ALL	ADDED HANG TAG AND ISO VALVE REDEW LAYOUT TO CURRENT STANDARD.	2/27/08	21881	AEK	GES
C-2	C-4	REMOVED VENT PLUG ADDED FILTER NOTE	02/29/08	21881	DMS	GES
C-3	C-6	REMOVED SIGHT GAUGE	07/17/08	21881	DMS	GES
C-4	2 ALL	REMOVED LOW OIL LIGHT OPTION	8/14/08	21907	AEK	GES
D-1	ALL	CHANGED BUILD TO REFLECT AMB01000AJ FRAME ASSY	3/8/09	22170	AEK	GES
E-1	1 ALL	REMOVED VACUUM SWITCHES FROM CONTROL PANEL	10/26/09	22127	AEK	GES
F-1	2 C3.32	ADDED DRIP LEG	3/16/10	22348	AEK	DMS
G-1	ALL	ADDED P&MI SHEETS	12/12/11	22610	AEK	GES
H-1	2 ALL	MOVED TEMP SWITCH TO PUMP	4/23/12	22772	AEK	DMS
J-1	2 C5 2 ALL	ADDED SIGHT GAUGE ADDED SOURCE VALVE INFORMATION	10/18/12	22723	AEK	DMS
K-1	ALL	MADE HIGH TEMP STANDARD DN BASIC CONTROLS	7/16/13	PXEC0048	AEK	GES
L-1	1 ALL	UPDATED TO NEW RA SERIES PUMP	7/1/16	PXEC0148	AEK	GES



NOTE:
A 1/4 INCH VENT PLUG IS
LOCATED IN THE FILTER HOUSING.

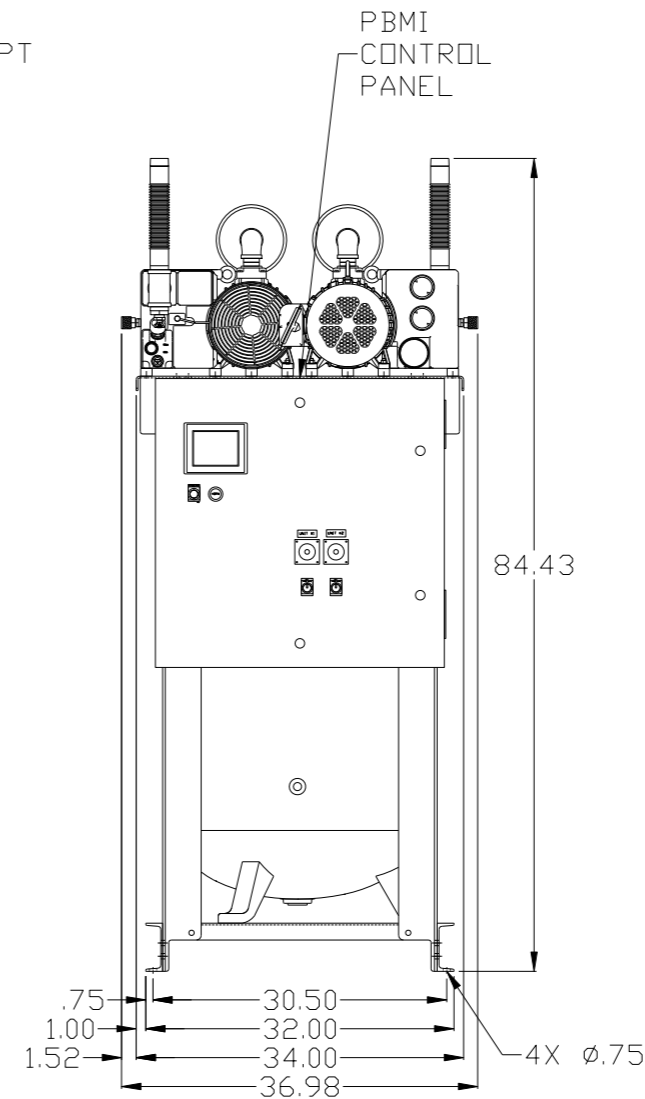
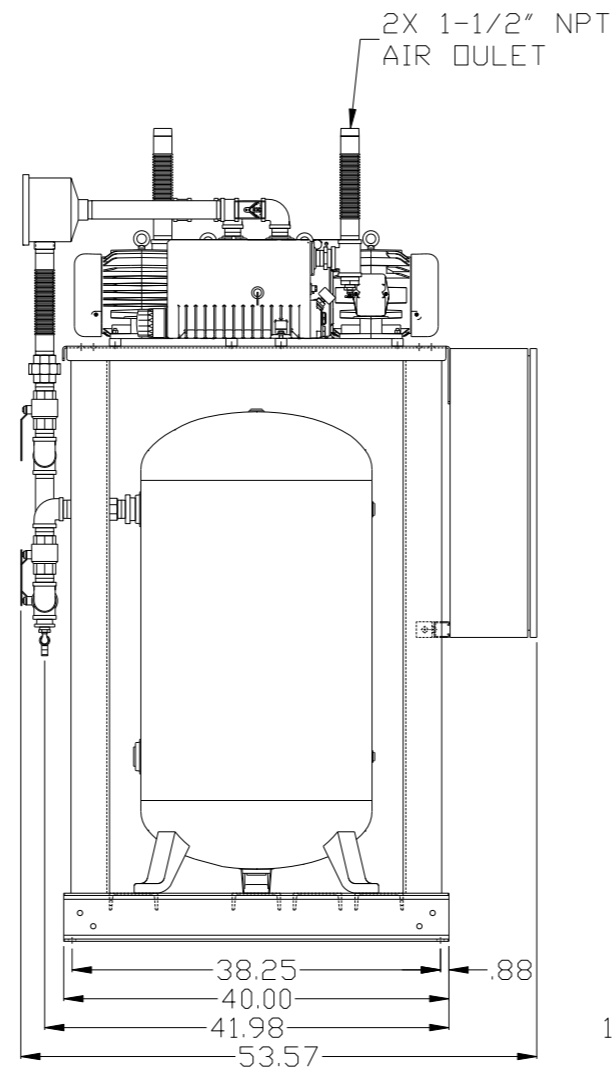
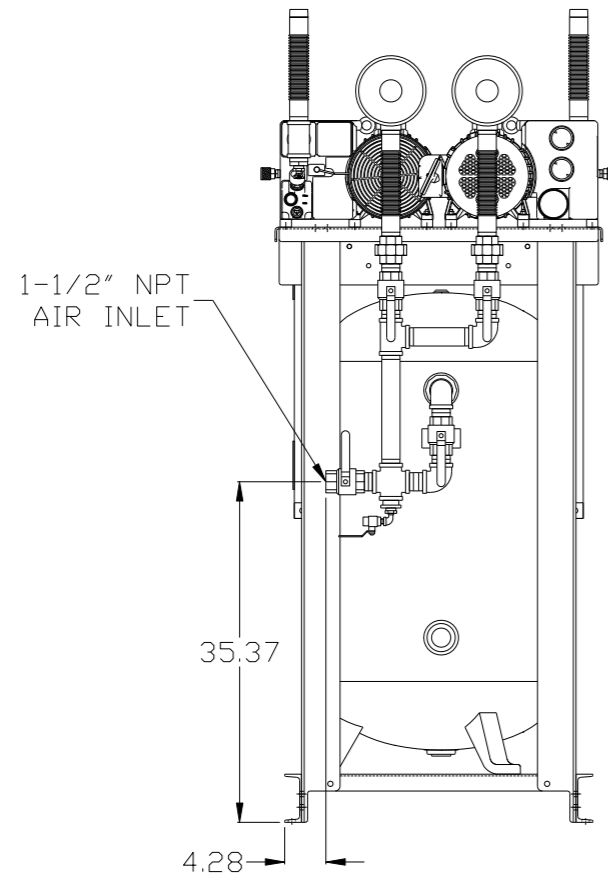
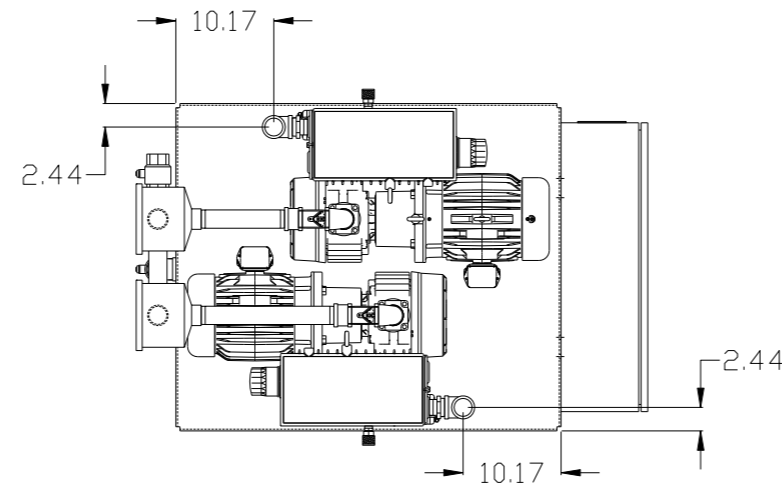
NOTES:
1) TSH - TEMPERATURE SWITCH HIGH
2) PER NFPA THE SYSTEM WILL REQUIRE A SOURCE VALVE (SUPPLIED BY OTHERS).

LEGEND

	TEMP. SWITCH		VACUUM SWITCH
	AIR FILTER		CHECK VALVE
	BALL VALVE		FLEX LINE
			UNION

SYMBOL LEGEND			ADDITIONAL CONTROL REQ'D	Drawings to conform to the current revision of the following ANSI standards:	
	MINUS DRAFT		BRINELL HARDNESS	Y14.3 Multi and sectional view dgs. Y14.5M Dimensioning and tolerancing	
TOLERANCES NOT SPECIFIED		AUTOCAD REL2008 LT	DO NOT SCALE DRAWING FOR DIMENSIONS		
.XX ±	.XXX ±	INCH	Sheet 2 of 2	SCALE 1:10	
CONFIDENTIAL DISCLOSURE This drawing is the property of POWEREX, INC. of the SCOTT FETZER COMPANY and subject to return on demand. Its contents are confidential and must not be copied or submitted to outside parties for use or examination.					
DRAWN BY	CHECKED BY	APPROVED BY	ENGINEERING	MFG/MRKTG	
AEK	DMS	DMS	JJ		
12/17/07	12/17/07	12/17/07	12/17/07		
MATERIAL		N/A			
PART NAME		DUPLX VAC TANK MOUNT			
FLOW SCHEMATIC		DWG NO VVTDO303			
		SIZE D			

REV	ZONE	REVISION	DATE	ECN	NAME	CHKD
G-1	ALL	ADDED PBMI SHEETS	12/12/11	22610	AEK	GES
H-1	2 ALL	MOVED TEMP SWITCH TO PUMP	4/23/12	22772	AEK	DMS
J-1	2 CS 2 ALL	ADDED SIGHT GAUGE ADDED SOURCE VALVE INFORMATION	10/18/12	22723	AEK	DMS
K-1	ALL	MADE HIGH TEMP STANDARD IN BASIC CONTROLS	7/16/13	PXEC0048	AEK	GES
L-1	1 ALL	UPDATED TO NEW RA SERIES PUMP	7/1/16	PXEC0048	AEK	GES

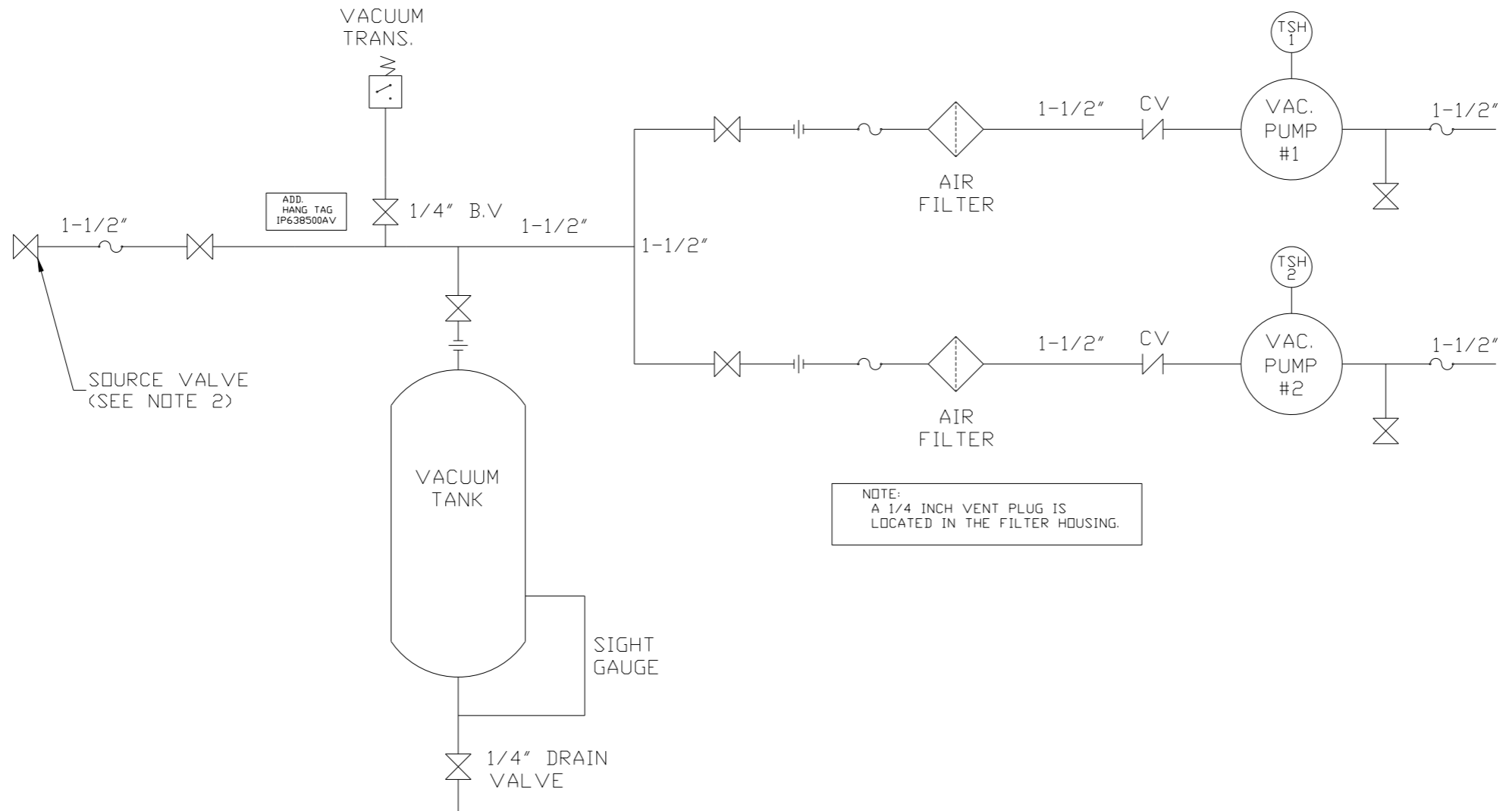


NOTE: SYSTEM DESIGNED IN COMPLIANCE WITH U.S. NFPA '99, LATEST EDITION.

NOTE: A MINIMUM OF 24" CLEARANCE IS RECOMMENDED AROUND THE ENTIRE UNIT.

SYMBOL LEGEND ⊖ = MINUS DRAFT ⊕ = PLUS DRAFT ∅ = ADDITIONAL CONTROL REQ'D HRC = BRINELL HARDNESS		Drawings to conform to the current revision of the following ANSI standards: Y14.3 Multi and sectional view dsgs. Y14.5M Dimensioning and tolerancing	
TOLERANCES NOT SPECIFIED .XX ± .XXX ± <<DEG> ±		AUTOCAD REL2008 LT INCH DO NOT SCALE DRAWING FOR DIMENSIONS Sheet 1 of 2 SCALE 1:10	
CONFIDENTIAL DISCLOSURE This drawing is the property of POWEREX, INC. OF THE SCOTT FETZER COMPANY and subject to return on demand. Its contents are confidential and must not be copied or submitted to outside parties for use or examination.			
DRAWN BY AEK 12/12/11		CHECKED BY GES 12/12/11	
APPROVED BY DMS 12/12/11		APPROVED BY RJR 12/12/11	
MATERIAL N/A		 150 PRODUCTION DRIVE, HARRISON, OHIO 45030 Ph: 888-769-7979 FAX: (513) 367-3125	
PART NAME DUPLEX VACUUM 3HP 80 GAL VERT		DWG NO VVTDO303 SIZE D	

REV	ZONE	REVISION	DATE	ECN	NAME	CHKD
G-1	ALL	ADDED PBM1 SHEETS	12/12/11	22610	AEK	GES
H-1	2 ALL	MOVED TEMP SWITCH TO PUMP	4/23/12	22772	AEK	DMS
J-1	2 CS 2 ALL	ADDED SIGHT GAUGE ADDED SOURCE VALVE INFORMATION	10/18/12	22723	AEK	DMS
K-1	ALL	MADE HIGH TEMP STANDARD IN BASIC CONTROLS	7/16/13	PXEC0048	AEK	GES
L-1	1 ALL	UPDATED TO NEW RA SERIES PUMP	7/1/16	PXEC0148	AEK	GES



NOTE:
A 1/4 INCH VENT PLUG IS
LOCATED IN THE FILTER HOUSING.

LEGEND

	TEMP. SWITCH		VACUUM SWITCH
	AIR FILTER		CHECK VALVE
	BALL VALVE		FLEX LINE
			UNION

NOTES:
1) TSH - TEMPERATURE SWITCH HIGH
2) PER NFPA THE SYSTEM WILL REQUIRE A SOURCE VALVE (SUPPLIED BY OTHERS).

SYMBOL LEGEND			ADDITIONAL CONTROL REQ'D	Drawings to conform to the current revision of the following ANSI standards:	
	MINUS DRAFT		BRINELL HARDNESS	Y14.3 Multi and sectional view dsgs. Y14.5M Dimensioning and tolerancing	
TOLERANCES NOT SPECIFIED		AUTOCAD REL2008 LT	DO NOT SCALE DRAWING FOR DIMENSIONS		
.XX ±	.XXX ±	INCH	Sheet 2 of 2	SCALE 1:10	
CONFIDENTIAL DISCLOSURE This drawing is the property of POWEREX, INC. OF THE SCOTT FETZER COMPANY and subject to return on demand. Its contents are confidential and must not be copied or submitted to outside parties for use or examination.					
DRAWN BY	CHECKED BY	ENGINEERING	MFG/MRKTG		
AEK	GES	DMS	RJR		
12/12/11	12/12/11	12/12/11	12/12/11		
MATERIAL		N/A			
PART NAME		DUPLX VAC TANK MOUNT			
FLOW SCHEMATIC		DWG NO VVTDO303			
		SIZE D			