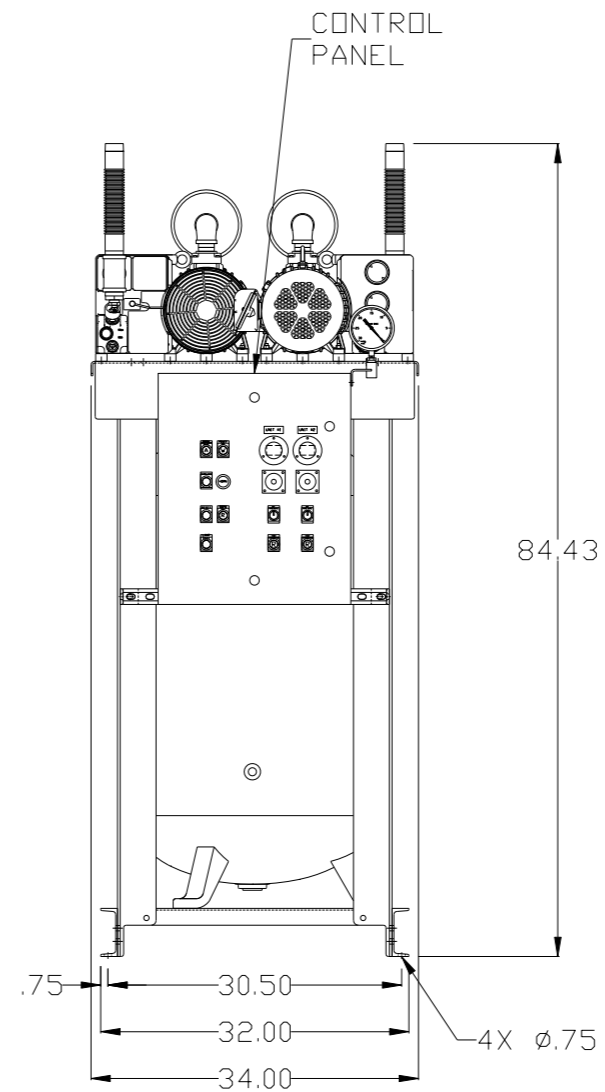
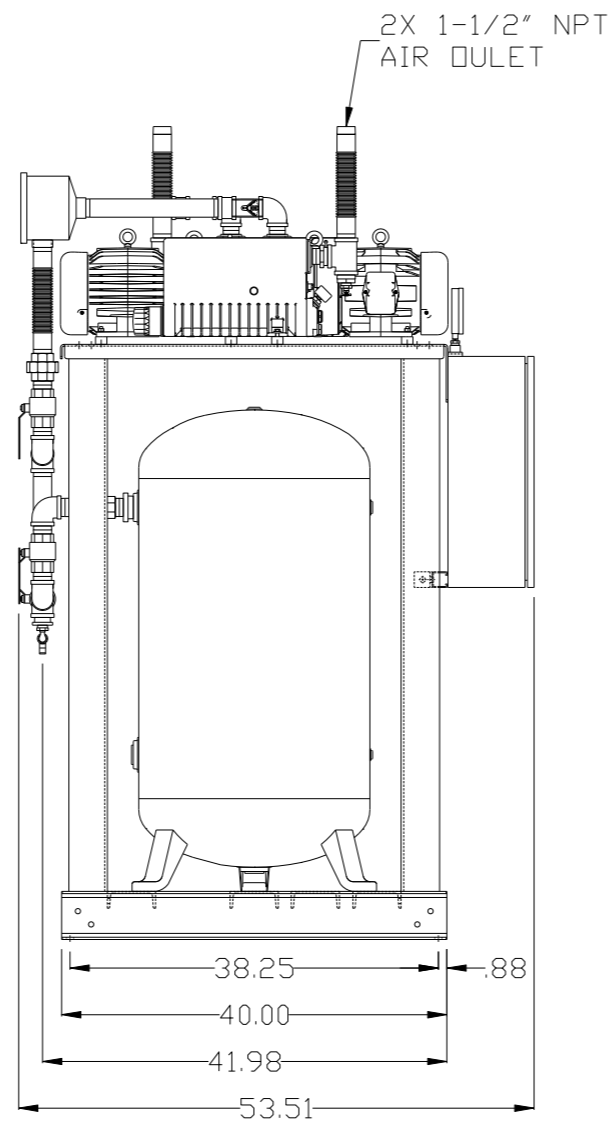
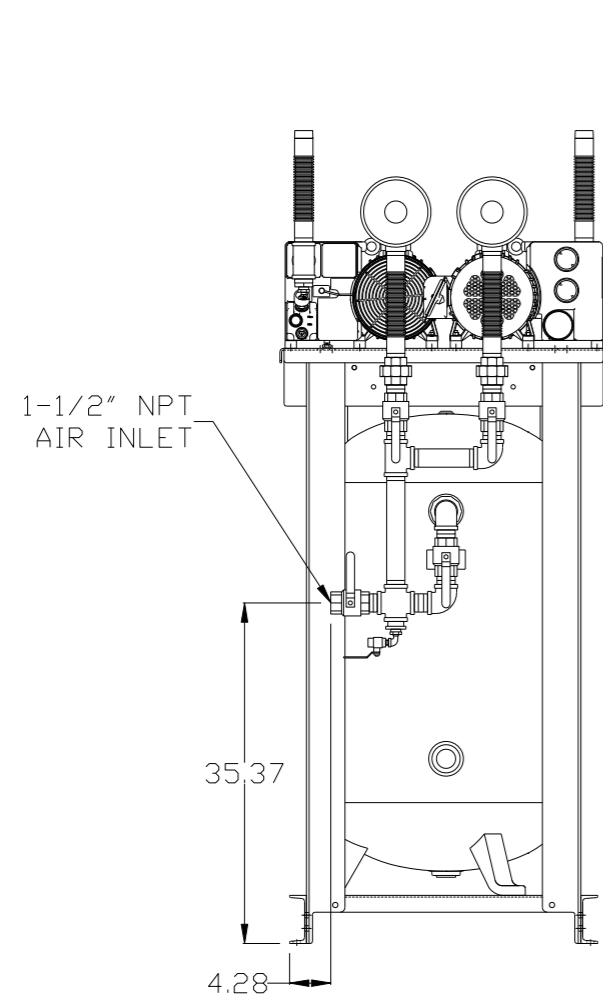
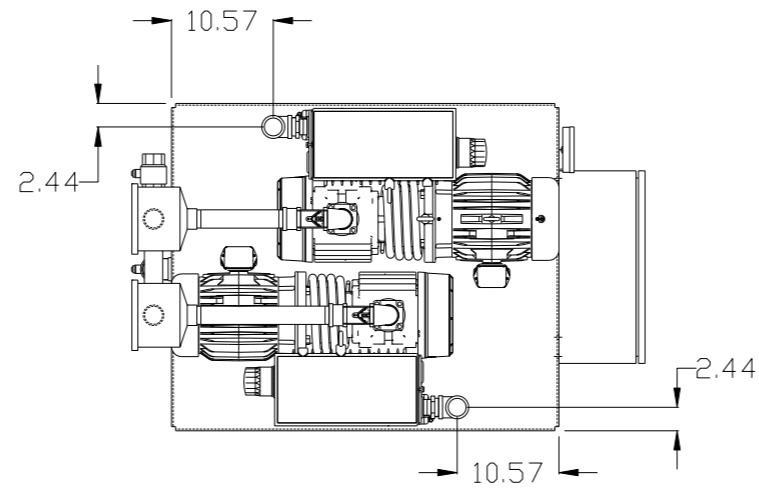


REV	ZONE	REVISION	DATE	ECN	NAME	CHKD
A-1	ALL	RELEASE FOR SUBMITTAL	5/28/08	21906	AEK	GES
B-1	ALL	CHANGED BUILD TO REFLECT AMB00100AJ FRAME ASSY	3/8/09	22170	AEK	GES
C-1	1 ALL	REMOVED VACUUM SWITCHES FROM CONTROL PANEL	10/23/09	22127	AEK	DMS
D-1	2 C3.03	ADDED DRIP LEG	3/16/10	22348	AEK	DMS
E-1	ALL	ADDED PBM SHEETS	12/12/11	22610	AEK	GES
F-1	2 C3.03	MOVED TEMP SWITCH TO PUMP	4/24/12	22772	AEK	DMS
G-1	2 C5 2 ALL	ADDED SIGHT GAUGE ADDED SOURCE VALVE INFORMATION	3/14/13	PXEC0030	AEK	GES
G-2	ALL	MADE HIGH TEMP STANDARD ON BASIC BUILD	11/13/13	PXEC0030	AEK	GES
H-1	1 ALL	UPDATED TO NEW RA SERIES PUMP	6/29/16	PXEC0148	AEK	GES

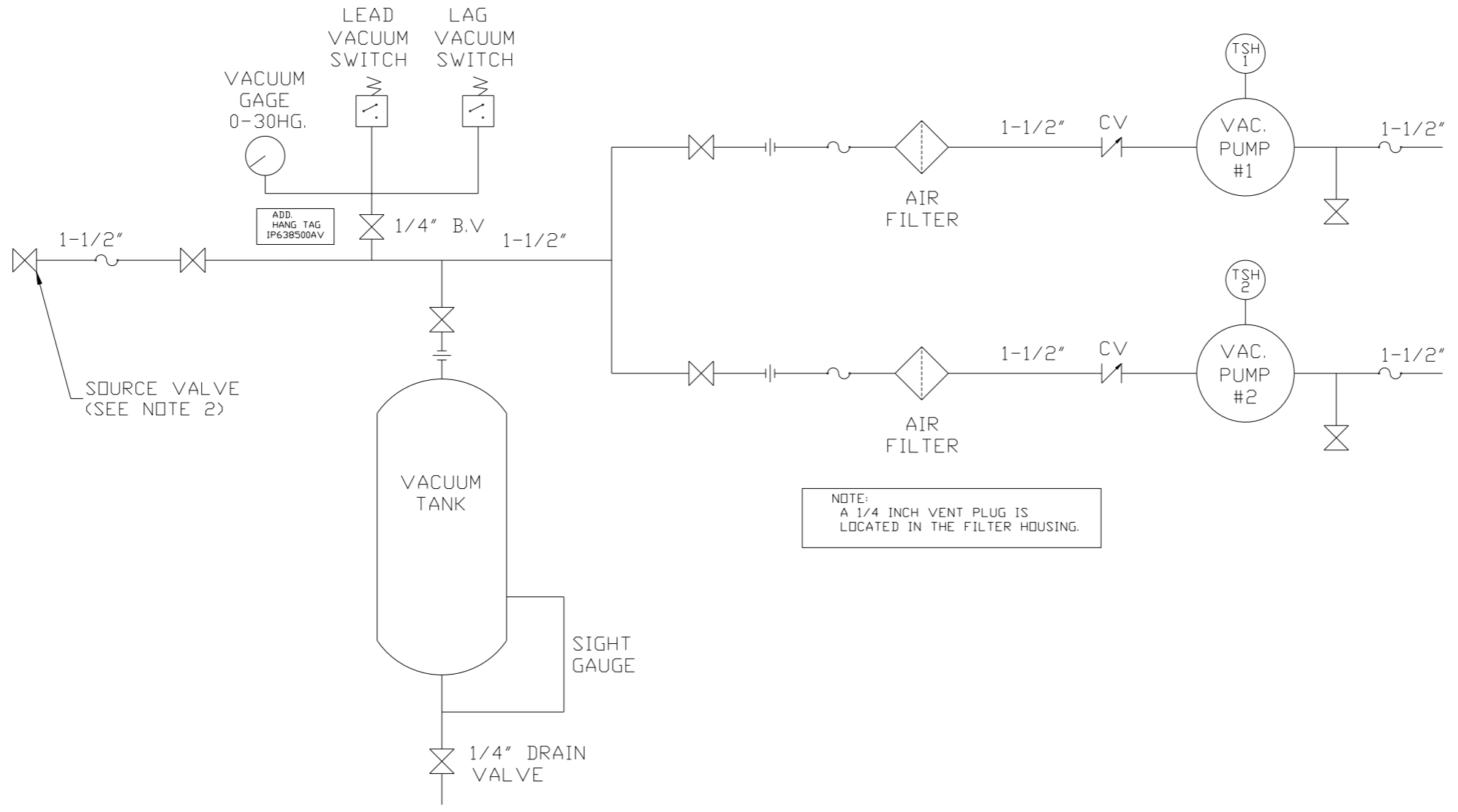


NOTE: SYSTEM DESIGNED IN COMPLIANCE WITH U.S. NFPA '99, LATEST EDITION.

NOTE: A MINIMUM OF 24" CLEARANCE IS RECOMMENDED AROUND THE ENTIRE UNIT.

SYMBOL LEGEND		AUTOCAD REL2008 LT		DO NOT SCALE DRAWING FOR DIMENSIONS	
⊖ = MINUS DRAFT	⊕ = PLUS DRAFT	⊕ = ADDITIONAL CONTROL REQ'D	⊕ = BRINELL HARDNESS	Drawings to conform to the current revision of the following ANSI standards: Y14.3 Multi and sectional view dgs, Y14.5M Dimensioning and tolerancing	
TOLERANCES NOT SPECIFIED		INCH		Sheet 1 of 2	
.XX ±				SCALE 1:10	
.XXX ±					
\angle (DEG.) ±					
CONFIDENTIAL DISCLOSURE		DRAWN BY		CHECKED BY	
This drawing is the property of POWEREX, INC. of the SCOTT FETZER COMPANY and subject to return on demand. Its contents are confidential and must not be copied or submitted to outside parties for use or examination.		AEK		GES	
		5/28/08		5/28/08	
				5/28/08	
				5/28/08	
MATERIAL		N/A		APPROVED BY ENGINEERING MFG/MRKTG	
PART NAME		DUPLX VACUUM		DMS	
5HP 80 GAL VERT		N/A		DG	
		DWG NO		VVTDO403	
		SIZE		D	

REV	ZONE	REVISION	DATE	ECN	NAME	CHKD
A-1	ALL	RELEASE FOR SUBMITTAL	5/28/08	21906	AEK	GES
B-1	ALL	CHANGED BUILD TO REFLECT AMB00100AJ FRAME ASSY	3/8/09	22170	AEK	GES
C-1	1 ALL	REMOVED VACUUM SWITCHES FROM CONTROL PANEL	10/23/09	22127	AEK	DMS
D-1	2 C3.03	ADDED DRIP LEG	3/16/10	22348	AEK	DMS
E-1	ALL	ADDED P&MI SHEETS	12/12/11	22610	AEK	GES
F-1	2 C3.03	MOVED TEMP SWITCH TO PUMP	4/24/12	22772	AEK	DMS
G-1	2 C5 2 ALL	ADDED SIGHT GAUGE ADDED SOURCE VALVE INFORMATION	3/14/13	PXEC0030	AEK	GES
G-2	ALL	MADE HIGH TEMP STANDARD ON BASIC BUILD	11/13/13	PXEC0030	AEK	GES
H-1	1 ALL	UPDATED TO NEW RA SERIES PUMP	6/29/16	PXEC0148	AEK	GES



NOTE:
A 1/4 INCH VENT PLUG IS
LOCATED IN THE FILTER HOUSING.

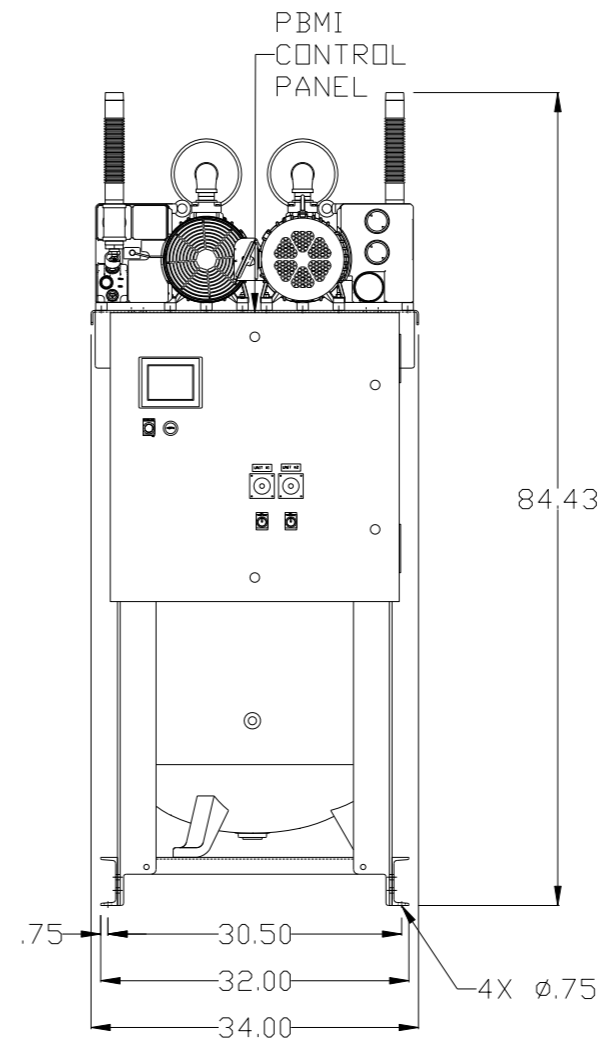
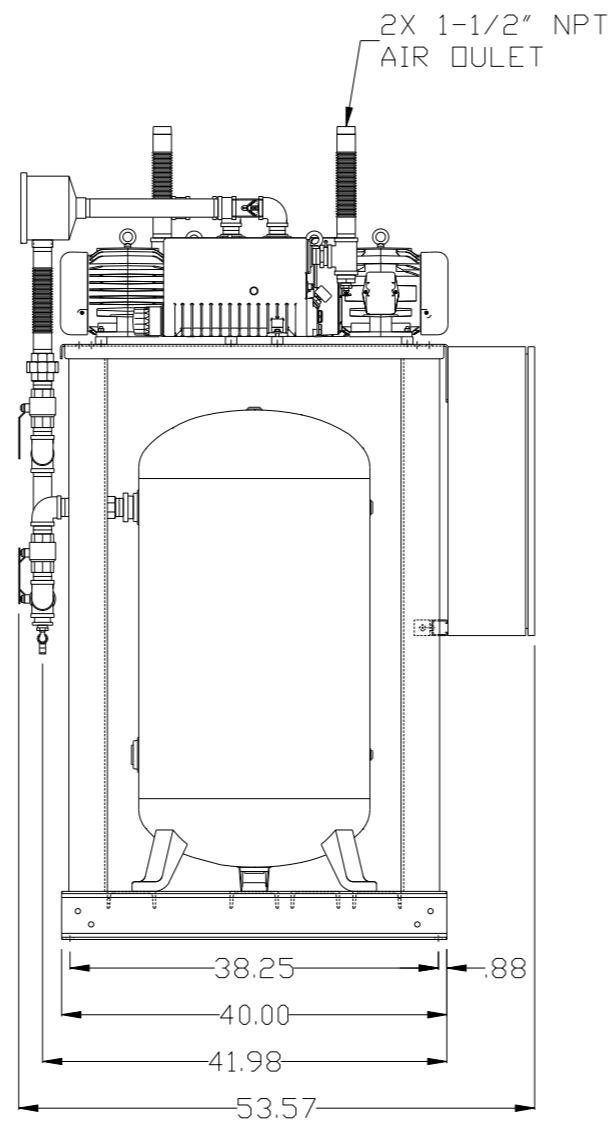
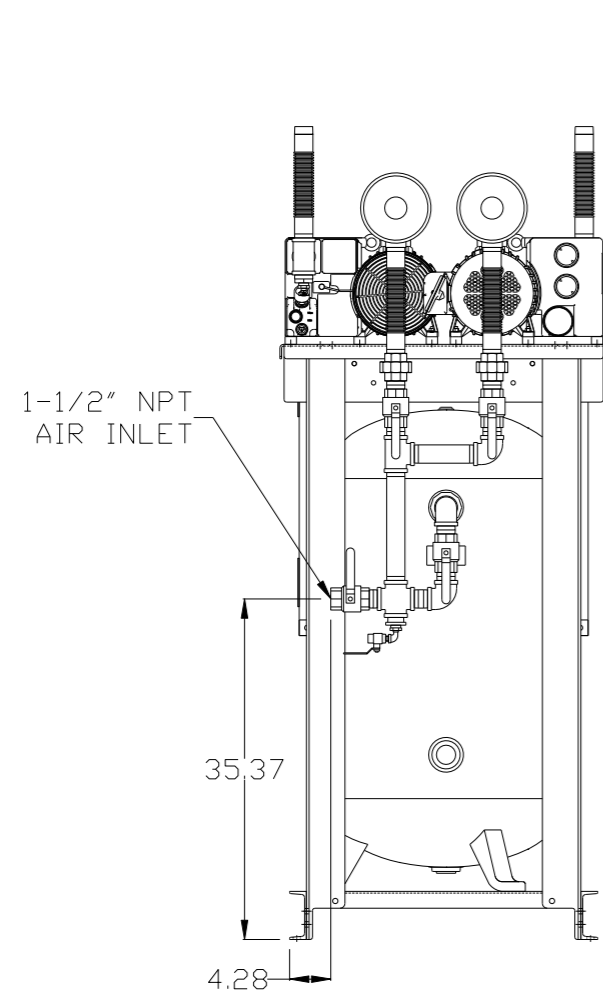
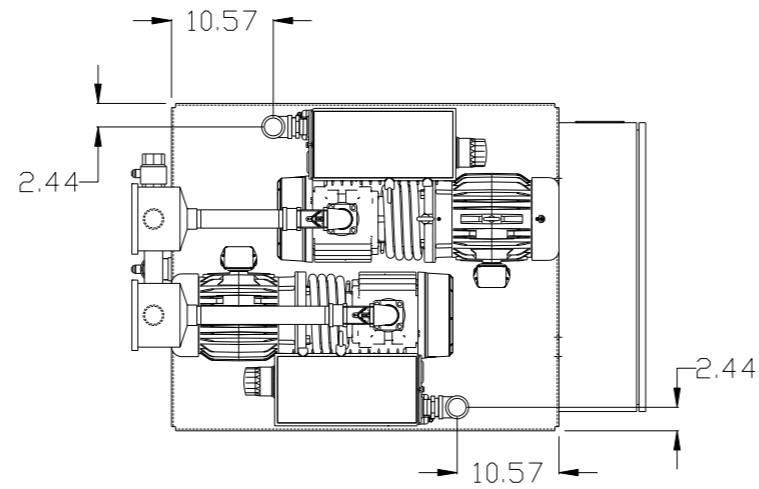
LEGEND

	TEMP. SWITCH		VACUUM SWITCH
	AIR FILTER		CHECK VALVE
	BALL VALVE		FLEX LINE
			UNION

NOTES:
1) TSH - TEMPERATURE SWITCH HIGH
2) PER NFPA THE SYSTEM WILL REQUIRE A SOURCE VALVE (SUPPLIED BY OTHERS).

SYMBOL LEGEND			ADDITIONAL CONTROL REQ'D	Drawings to conform to the current revision of the following ANSI standards:	
	MINUS DRAFT		BRINELL HARDNESS	Y14.3 Multi and sectional view dsgs. Y14.5M Dimensioning and tolerancing	
TOLERANCES NOT SPECIFIED		AUTOCAD REL2008 LT	DO NOT SCALE DRAWING FOR DIMENSIONS		
.XX ±	.XXX ±	INCH	Sheet 2 of 2	SCALE 1:10	
CONFIDENTIAL DISCLOSURE This drawing is the property of POWEREX, INC. of the SCOTT FETZER COMPANY and subject to return on demand. Its contents are confidential and must not be copied or submitted to outside parties for use or examination.					
DRAWN BY	CHECKED BY	APPROVED BY	ENGINEERING	MFG/MRKTG	
AEK	GES	DMS	DG		
5/28/08	5/28/08	5/28/08	5/28/08		
MATERIAL		N/A			
PART NAME		 150 PRODUCTION DRIVE, HARRISON, OHIO 45030 Ph: 888-769-7979 FAX: (513) 367-3125			
DWG NO		VVTDO403		SIZE D	
DUPLX VACUUM FLOW SCHEMATIC					

REV	ZONE	REVISION	DATE	ECN	NAME	CHKD
E-1	ALL	ADDED PBMI SHEETS	12/12/11	22610	AEK	GES
F-1	2 C3.03	MOVED TEMP SWITCH TO PUMP	4/24/12	22772	AEK	DMS
G-1	2 C5 2 ALL	ADDED SIGHT GAUGE ADDED SOURCE VALVE INFORMATION	3/14/13	PXEC0030	AEK	GES
G-2	ALL	MADE HIGH TEMP STANDARD ON BASIC BUILD	11/13/13	PXEC0030	AEK	GES
H-1	1 ALL	UPDATED TO NEW RA SERIES PUMP	6/29/16	PXEC0148	AEK	GES

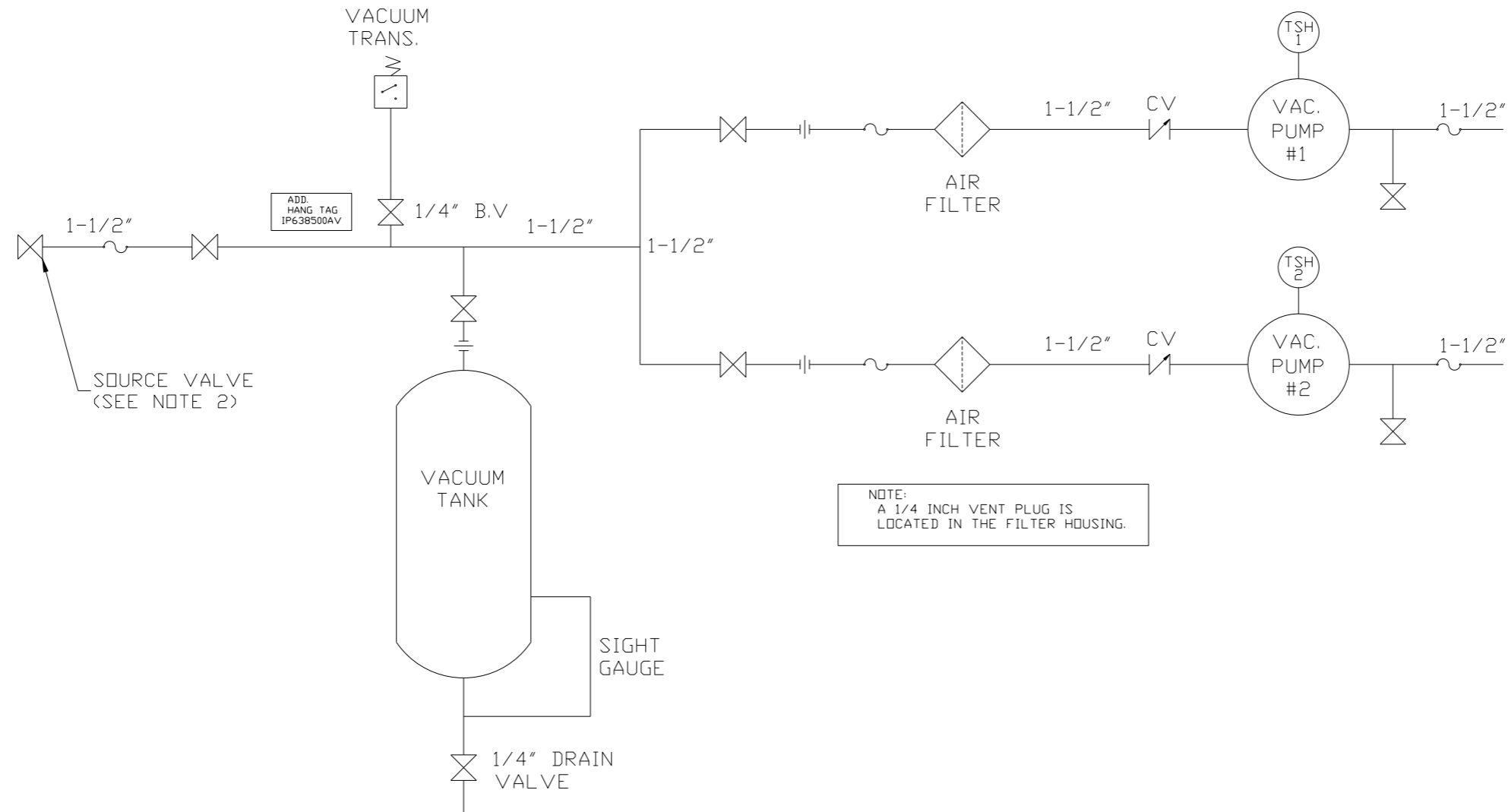


NOTE: A MINIMUM OF 24" CLEARANCE IS RECOMMENDED AROUND THE ENTIRE UNIT.

NOTE: SYSTEM DESIGNED IN COMPLIANCE WITH U.S. NFPA '99, LATEST EDITION.

SYMBOL LEGEND		= ADDITIONAL CONTROL REQ'D		Drawings to conform to the current revision of the following ANSI standards:	
\ominus	MINUS DRAFT	\oplus	PLUS DRAFT	HRC	BRINELL HARDNESS
TOLERANCES NOT SPECIFIED		AUTOCAD REL2008 LT		DO NOT SCALE DRAWING FOR DIMENSIONS	
.XX	\pm	INCH		Sheet 1 of 2	SCALE 1:10
.XXX	\pm	CONFIDENTIAL DISCLOSURE			
\angle (DEG.)	\pm	This drawing is the property of POWEREX, INC. OF THE SCOTT FETZER COMPANY and subject to return on demand. Its contents are confidential and must not be copied or submitted to outside parties for use or examination.			
DRAWN BY		CHECKED BY		APPROVED BY	
AEK		GES		DMS RJR	
12/12/11		12/12/11		12/12/11 12/12/11	
MATERIAL		N/A			
PART NAME		DUPLIX VACUUM			
5HP 80 GAL VERT		DWG NO		VVTDO403	
		SIZE		D	

REV	ZONE	REVISION	DATE	ECN	NAME	CHKD
E-1	ALL	ADDED PBM1 SHEETS	12/12/11	22610	AEK	GES
F-1	2 C3.03	MOVED TEMP SWITCH TO PUMP	4/24/12	22772	AEK	DMS
G-1	2 C5 2 ALL	ADDED SIGHT GAUGE ADDED SOURCE VALVE INFORMATION	3/14/13	PXEC0030	AEK	GES
G-2	ALL	MADE HIGH TEMP STANDARD ON BASIC BUILD	11/13/13	PXEC0030	AEK	GES
H-1	1 ALL	UPDATED TO NEW RA SERIES PUMP	6/29/16	PXEC0148	AEK	GES



NOTE:
A 1/4 INCH VENT PLUG IS
LOCATED IN THE FILTER HOUSING.

LEGEND

	TEMP. SWITCH		VACUUM SWITCH
	AIR FILTER		CHECK VALVE
	BALL VALVE		FLEX LINE
			UNION

NOTES:
1) TSH - TEMPERATURE SWITCH HIGH
2) PER NFPA THE SYSTEM WILL REQUIRE A SOURCE VALVE (SUPPLIED BY OTHERS).

SYMBOL LEGEND			ADDITIONAL CONTROL REQ'D	Drawings to conform to the current revision of the following ANSI standards:	
	MINUS DRAFT		BRINELL HARDNESS	Y14.3 Multi and sectional view dsgs. Y14.5M Dimensioning and tolerancing	
TOLERANCES NOT SPECIFIED		AUTOCAD REL2008 LT	DO NOT SCALE DRAWING FOR DIMENSIONS		
.XX ±	.XXX ±	INCH	Sheet 2 of 2	SCALE 1:10	
CONFIDENTIAL DISCLOSURE This drawing is the property of POWEREX, INC. of the SCOTT FETZER COMPANY and subject to return on demand. Its contents are confidential and must not be copied or submitted to outside parties for use or examination.					
DRAWN BY		CHECKED BY	APPROVED BY		ENGINEERING MFG/MRKTG
AEK		GES	DMS		RJR
12/12/11		12/12/11	12/12/11		12/12/11
MATERIAL		N/A			
PART NAME		DUPLIX VACUUM FLOW SCHEMATIC			
DWG NO		VVTDO403		SIZE D	