

REV	ZONE	REVISION	DATE	ECN	NAME	CHKD
B-1	ALL	RELEASE TO PRODUCTION	2/23/15	PXEC005	JBE	DMS
C-1	ALL	CORRECTED SEPARATOR DRAIN LINES TO 1/4"				
	2	ADDED NOTE TO REMOVE SEPARATOR FLDAT				
	1	CORRECTED VIEW POSITIONING				
	1	ADDED OVERALL DIMENSIONS	01/04/16	PXEC0167	MJD	GES
	1	ADDED OUTLINE FOR RECOMMENDED CLEARANCES				
	1	UPDATED INLET TREE				

MINIMUM RECOMMENDED ELECTRICAL PANEL CLEARANCE PER OSHA/NEC REQUIREMENTS

8X Ø0.75

MINIMUM RECOMMENDED MAINTENANCE CLEARANCE

INLET 3"

2X DESICCANT DRYER W/ DEW POINT MONITOR, OPTIONAL CARBON MONOXIDE MONITOR, PRE FILTER, AFTER FILTER & OPTIONAL CHARCOAL FILTER.

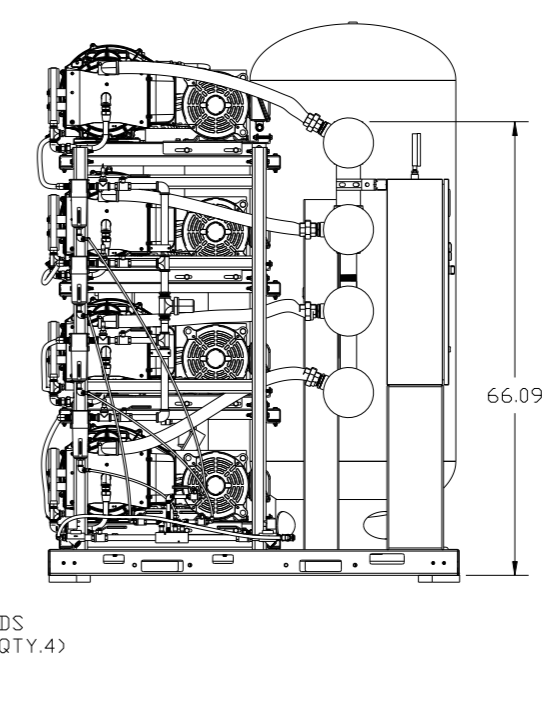
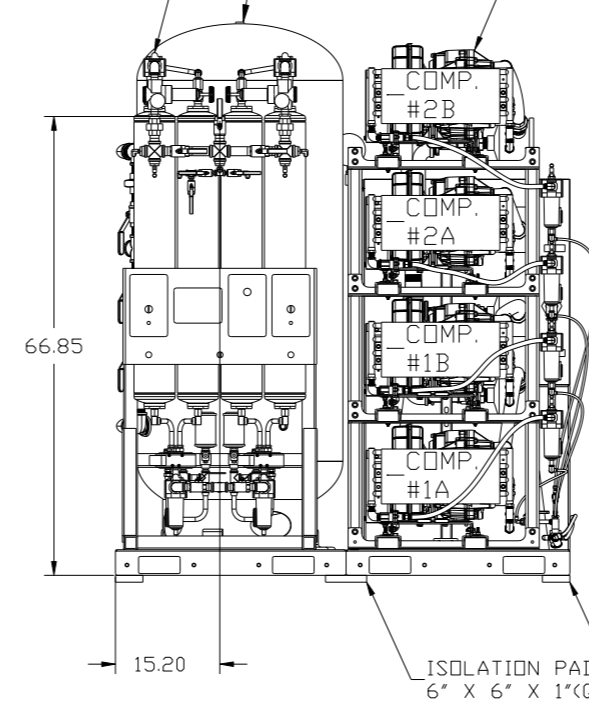
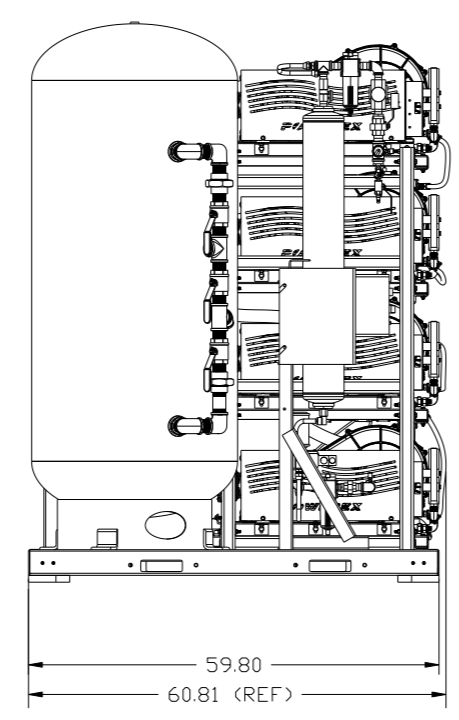
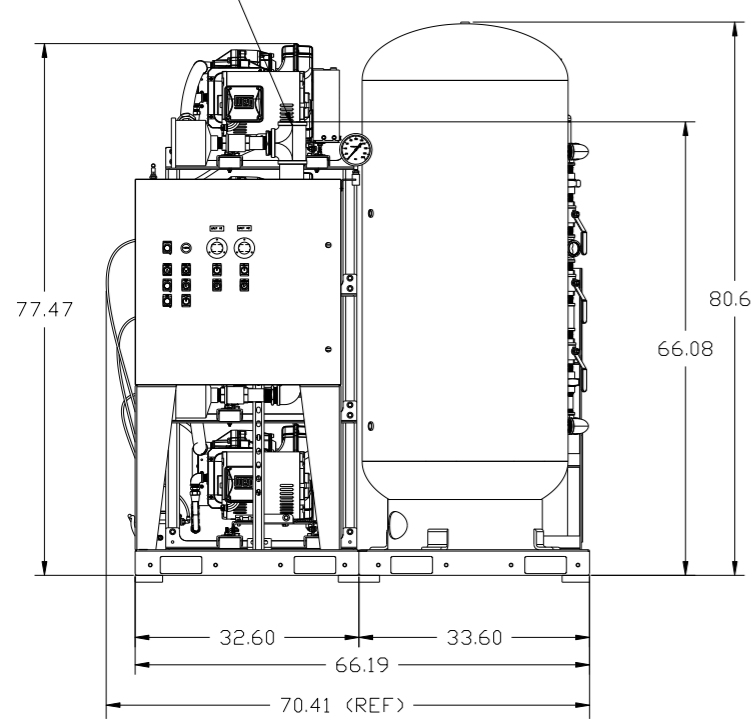
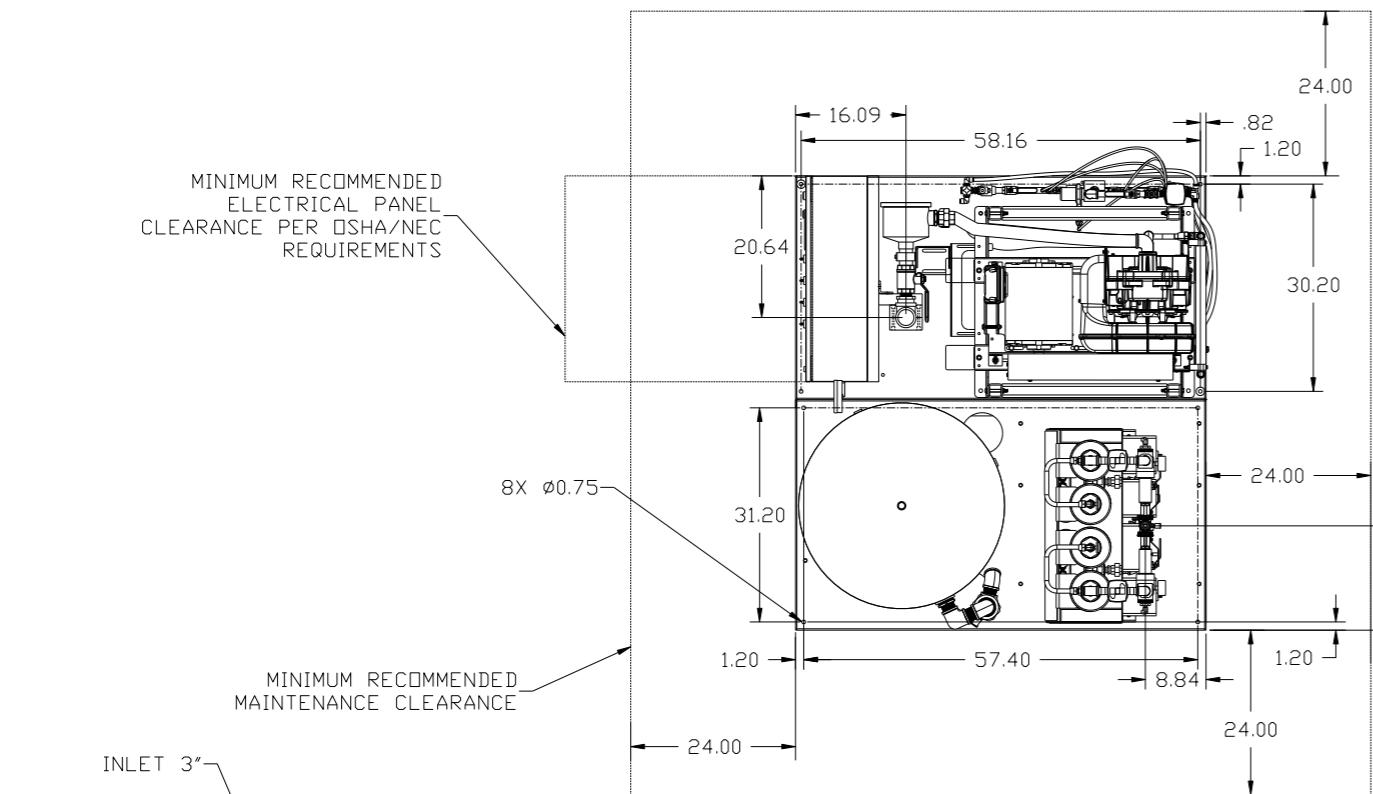
200 GALLON ASME AIR RECEIVER INTERNALLY LINED

2X 15HP OILLESS SCROLL AIR END

ISOLATION PADS 4" X 4" X 1"(QTY.4)

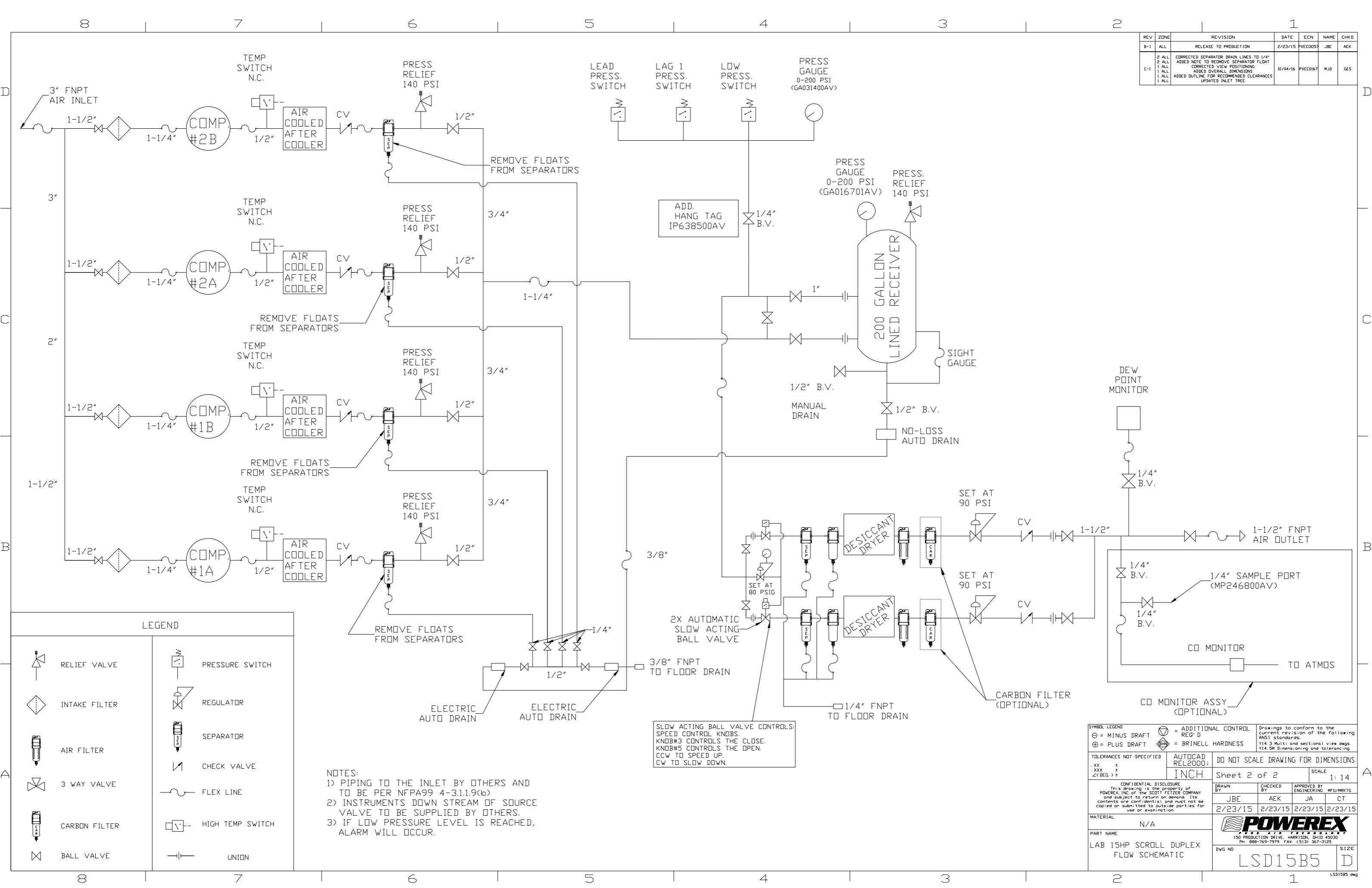
ISOLATION PADS 6" X 6" X 1"(QTY.2)

NOTE: SYSTEM DESIGNED IN COMPLIANCE WITH US NFPA'99, LATEST EDITION.



SYMBOL LEGEND		DRAWINGS TO CONFORM TO THE CURRENT REVISION OF THE FOLLOWING ANSI STANDARDS:	
⊖	= MINUS DRAFT	⊕	= ADDITIONAL CONTROL REQ'D
⊕	= PLUS DRAFT	HRC	= BRINELL HARDNESS
TOLERANCES NOT SPECIFIED		DO NOT SCALE DRAWING FOR DIMENSIONS	
.XX ±	AUTOCAD REL2000	Sheet 1 of 2	
.XXX ±	INCH	SCALE 1:14	
<<BEG>> ±			
CONFIDENTIAL DISCLOSURE: This drawing is the property of POWEREX, INC. of the SCOTT FETZER COMPANY and is subject to return on demand. Its contents are confidential and must not be copied or submitted to outside parties for use or examination.		DRAWN BY	CHECKED BY
		JBE	AEK
		APPROVED BY	ENGINEERING MFG/MKTG
		2/23/15	2/23/15 2/23/15 2/23/15
MATERIAL		N/A	
PART NAME		LAB DUPLEX SCROLL 15HP, 200GAL. BASEMOUNT DUPLEX DESICCANT	
DWG NO		LSD15B5	
		SIZE D	

REV	ZONE	REVISION	DATE	ECN	NAME	CHKD
B-1	ALL	RELEASE TO PRODUCTION	2/23/15	PKEC0057	JBE	AEK
C-1	2 ALL	CORRECTED SEPARATOR BRAIN LINES TO 1/4"				
	2 ALL	ADDED NOTE TO REMOVE SEPARATOR FLOAT				
	1 ALL	CORRECTED VIEW POSITIONING				
	1 ALL	ADDED OVERALL DIMENSIONS	01/04/16	PKEC0167	MJD	GES
	1 ALL	ADDED OUTLINE FOR RECOMMENDED CLEARANCES				
	1 ALL	UPDATED INLET TREE				



LEGEND	
	RELIEF VALVE
	INTAKE FILTER
	AIR FILTER
	3 WAY VALVE
	CARBON FILTER
	BALL VALVE
	PRESSURE SWITCH
	REGULATOR
	SEPARATOR
	CHECK VALVE
	FLEX LINE
	HIGH TEMP SWITCH
	UNION

NOTES:
 1) PIPING TO THE INLET BY OTHERS AND TO BE PER NFPA99 4-3.1.1.9(b)
 2) INSTRUMENTS DOWN STREAM OF SOURCE VALVE TO BE SUPPLIED BY OTHERS.
 3) IF LOW PRESSURE LEVEL IS REACHED, ALARM WILL OCCUR.

SLOW ACTING BALL VALVE CONTROLS SPEED CONTROL KNOBS. KNOB#3 CONTROLS THE CLOSE. KNOB#5 CONTROLS THE OPEN. CCW TO SPEED UP. CW TO SLOW DOWN.

SYMBOL LEGEND		TOLERANCES NOT SPECIFIED		AUTOCAD REL2000:		DO NOT SCALE DRAWING FOR DIMENSIONS	
	MINUS DRAFT		ADDITIONAL CONTROL	INCH		Sheet 2 of 2	
	PLUS DRAFT		BRINELL HARDNESS	SCALE 1:14		DRAWN BY: JBE	
<small>CONFIDENTIAL DISCLOSURE: This drawing is the property of POWEREX, INC. of the SCOTT FETZER COMPANY and subject to return on demand. Its contents are confidential and must not be copied or submitted to outside parties for use or examination.</small>				<small>Checked by: AEK</small> <small>Approved by: JA</small>	<small>Checked by: AEK</small> <small>Approved by: JA</small>	<small>Checked by: CT</small> <small>Approved by: CT</small>	<small>Checked by: CT</small> <small>Approved by: CT</small>
MATERIAL: N/A				 <small>150 PRODUCTION DRIVE, HARRISON, OHIO 45030 Ph: 888-769-7979 FAX: (513) 367-3125</small>			
PART NAME: LAB 15HP SCROLL DUPLEX FLOW SCHEMATIC				DWG NO: LSD15B5		SIZE: D	

REV	ZONE	REVISION	DATE	ECN	NAME	CHKD
B-1	ALL	RELEASE TO PRODUCTION	2/23/15	PXEC0057	JBE	DMS
C-1	2 ALL	CORRECTED SEPARATOR DRAIN LINES TO 1/4"				
	2 ALL	ADDED NOTE TO REMOVE SEPARATOR FLDAT				
	1 ALL	CORRECTED VIEW POSITIONING	01/04/16	PXEC0167	MJD	GES
	1 ALL	ADDED OVERALL DIMENSIONS				
	1 ALL	ADDED OUTLINE FOR RECOMMENDED CLEARANCES				
	1 ALL	UPDATED INLET TREE				

MINIMUM RECOMMENDED ELECTRICAL PANEL CLEARANCE PER OSHA/NEC REQUIREMENTS

MINIMUM RECOMMENDED MAINTENANCE CLEARANCE

2X DESICCANT DRYER W/ OPTIONAL CARBON MONOXIDE MONITOR, PRE FILTER, AFTER FILTER & OPTIONAL CHARCOAL FILTER.


200 GALLON ASME AIR RECEIVER INTERNALLY LINED

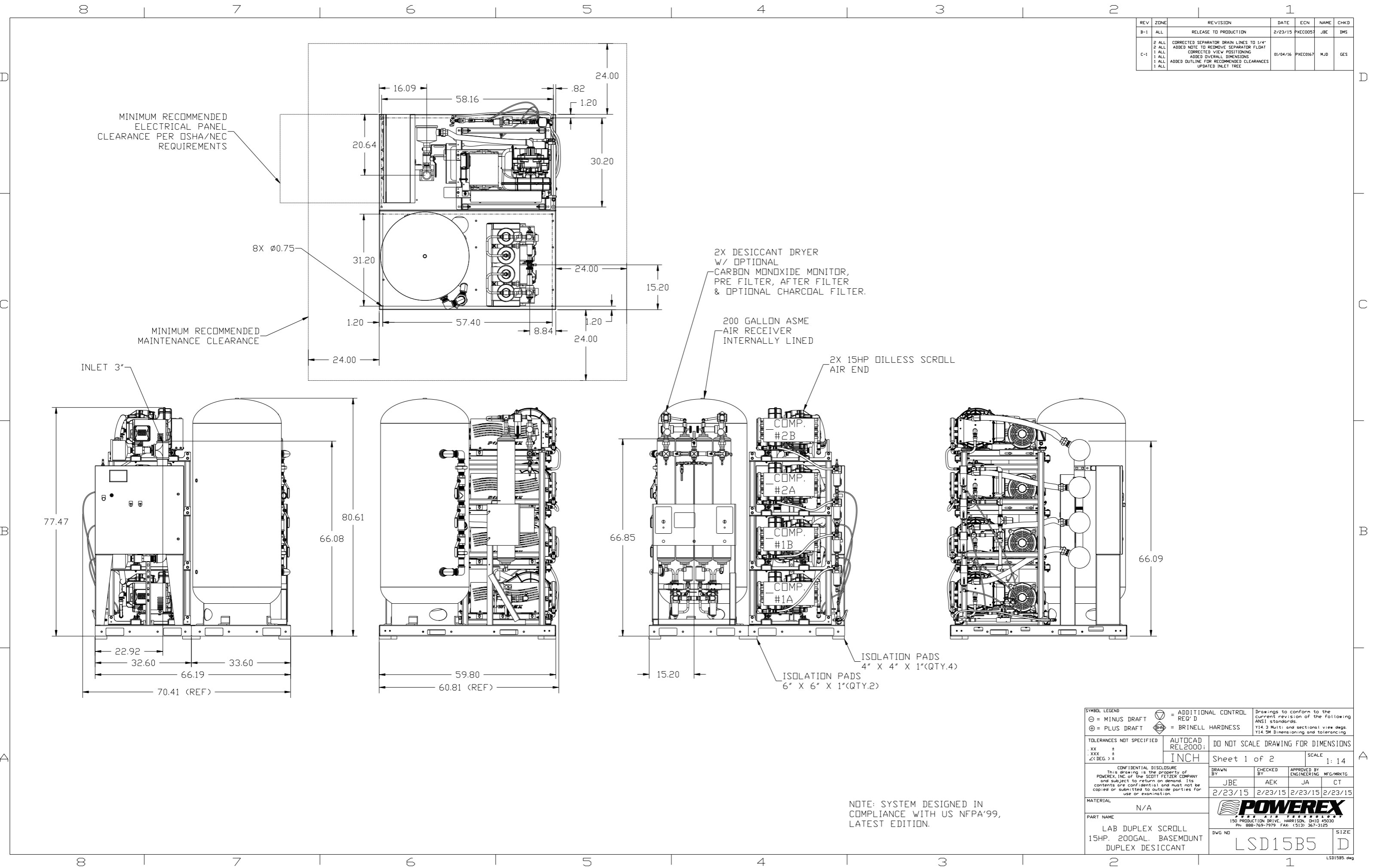
2X 15HP OILLESS SCROLL AIR END

ISOLATION PADS 4" X 4" X 1"(QTY.4)

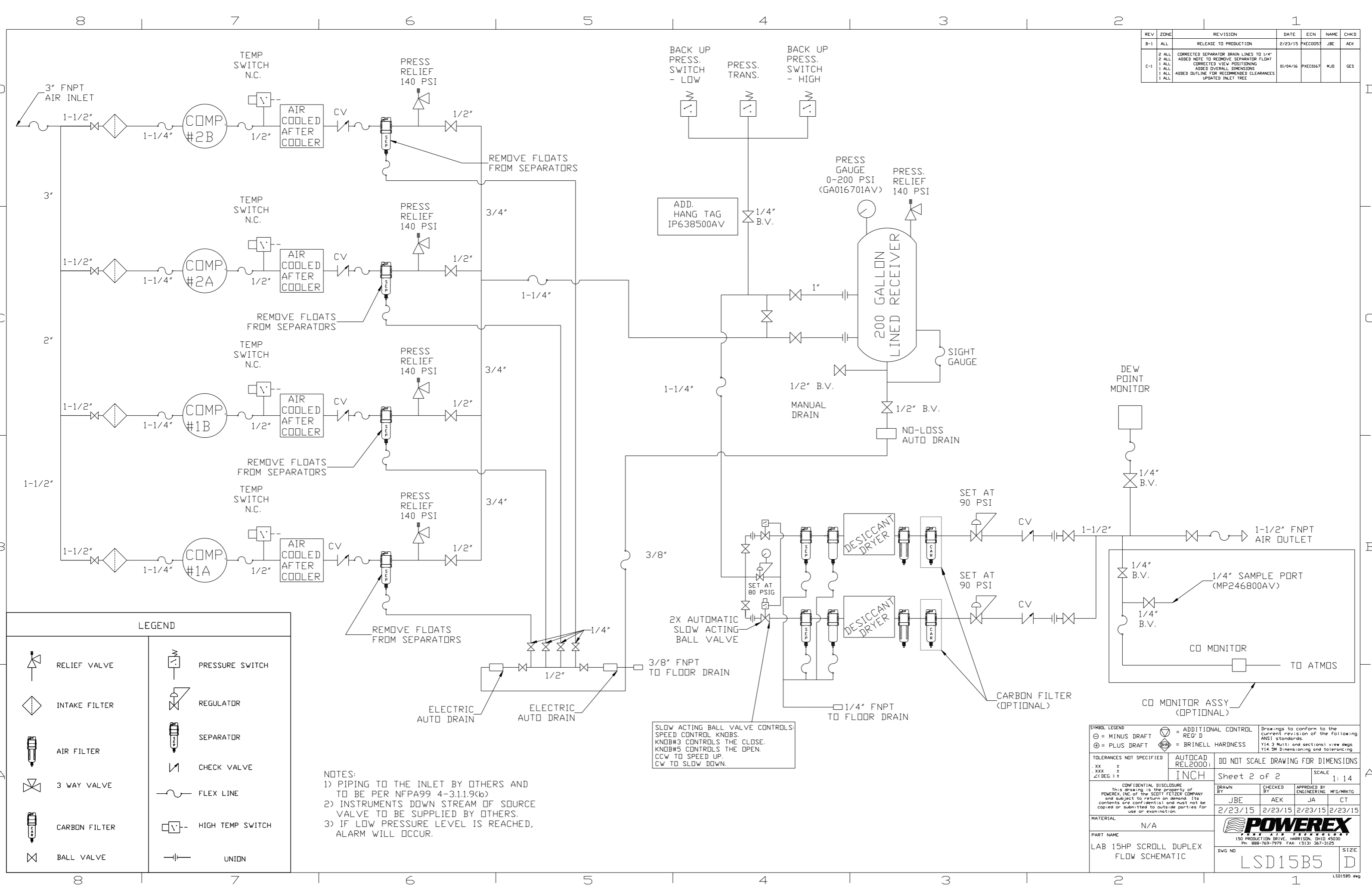
ISOLATION PADS 6" X 6" X 1"(QTY.2)

NOTE: SYSTEM DESIGNED IN COMPLIANCE WITH US NFPA'99, LATEST EDITION.

SYMBOL LEGEND ⊖ = MINUS DRAFT ⊕ = PLUS DRAFT ⊕ = BRINELL HARDNESS		ADDITIONAL CONTROL REQ'D = BRINELL HARDNESS		Drawings to conform to the current revision of the following ANSI standards: Y14.3 Multi and sectional view dsgs Y14.5M Dimensioning and tolerancing	
TOLERANCES NOT SPECIFIED: .XX ± .XXX ± <DEG. > ±		AUTOCAD REL2000 INCH		DO NOT SCALE DRAWING FOR DIMENSIONS Sheet 1 of 2 SCALE 1: 14	
CONFIDENTIAL DISCLOSURE This drawing is the property of POWEREX, INC. of the SCOTT FEITZER COMPANY and subject to return on demand. Its contents are confidential and must not be copied or submitted to outside parties for use or examination.		DRAWN BY JBE	CHECKED BY AEK	APPROVED BY ENGINEERING JA	MFG/MRKTG CT
MATERIAL N/A		DATE 2/23/15	DATE 2/23/15	DATE 2/23/15	DATE 2/23/15
PART NAME LAB DUPLEX SCROLL 15HP, 200GAL. BASEMOUNT DUPLEX DESICCANT		 150 PRODUCTION DRIVE, HARRISON, OHIO 45030 Ph: 888-769-7979 FAX: (513) 367-3125		DWG NO LSD15B5	



REV	ZONE	REVISION	DATE	ECN	NAME	CHKD
B-1	ALL	RELEASE TO PRODUCTION	2/23/15	PXEC0057	JBE	AEK
C-1	ALL	CORRECTED SEPARATOR DRAIN LINES TO 1/4"				
	ALL	ADDED NOTE TO REMOVE SEPARATOR FLOAT				
	ALL	CORRECTED VIEW POSITIONING				
	ALL	ADDED OVERALL DIMENSIONS	01/04/16	PXEC0167	MJD	GES
	ALL	ADDED OUTLINE FOR RECOMMENDED CLEARANCES				
	ALL	UPDATED INLET TREE				



LEGEND

	RELIEF VALVE		PRESSURE SWITCH
	INTAKE FILTER		REGULATOR
	AIR FILTER		SEPARATOR
	3 WAY VALVE		CHECK VALVE
	CARBON FILTER		FLEX LINE
	BALL VALVE		HIGH TEMP SWITCH
			UNION

NOTES:
 1) PIPING TO THE INLET BY OTHERS AND TO BE PER NFPA99 4-3.1.1.9(b)
 2) INSTRUMENTS DOWN STREAM OF SOURCE VALVE TO BE SUPPLIED BY OTHERS.
 3) IF LOW PRESSURE LEVEL IS REACHED, ALARM WILL OCCUR.

SLOW ACTING BALL VALVE CONTROLS SPEED CONTROL KNOBS. KNOB#3 CONTROLS THE CLOSE. KNOB#5 CONTROLS THE OPEN. CW TO SPEED UP. CCW TO SLOW DOWN.

SYMBOL LEGEND		TOLERANCES NOT SPECIFIED		DO NOT SCALE DRAWING FOR DIMENSIONS	
⊖	MINUS DRAFT	.XX	±	INCH	Sheet 2 of 2
⊕	PLUS DRAFT	.XXX	±	SCALE	1:14
⊖	ADDITIONAL CONTROL REQ'D	<DEG.	±		
⊕	BRINELL HARDNESS				
<small>CONFIDENTIAL DISCLOSURE: This drawing is the property of POWEREX, INC. of the SCOTT FETZER COMPANY and subject to return on demand. Its contents are confidential and must not be copied or submitted to outside parties for use or examination.</small>					
<small>Drawings to conform to the current revision of the following ANSI standards: Y14.3 Multi and sectional view dsgs. Y14.5M Dimensioning and tolerancing</small>		<small>DO NOT SCALE DRAWING FOR DIMENSIONS</small>			
<small>CONFIDENTIAL DISCLOSURE</small>		<small>AUTOCAD REL2000</small>		<small>SCALE 1:14</small>	
<small>DRWN BY: JBE</small>		<small>CHECKED BY: AEK</small>		<small>APPROVED BY: MFG/MRKTG</small>	
<small>DATE: 2/23/15</small>		<small>DATE: 2/23/15</small>		<small>DATE: 2/23/15</small>	
<small>MATERIAL: N/A</small>					
<small>PART NAME: LAB 15HP SCROLL DUPLEX FLOW SCHEMATIC</small>		<small>150 PRODUCTION DRIVE, HARRISON, OHIO 45030 Ph: 888-769-7979 Fax: (513) 367-3129</small>			
<small>DWG NO: LSD15B5</small>		<small>SIZE: D</small>		<small>DATE: 2/23/15</small>	