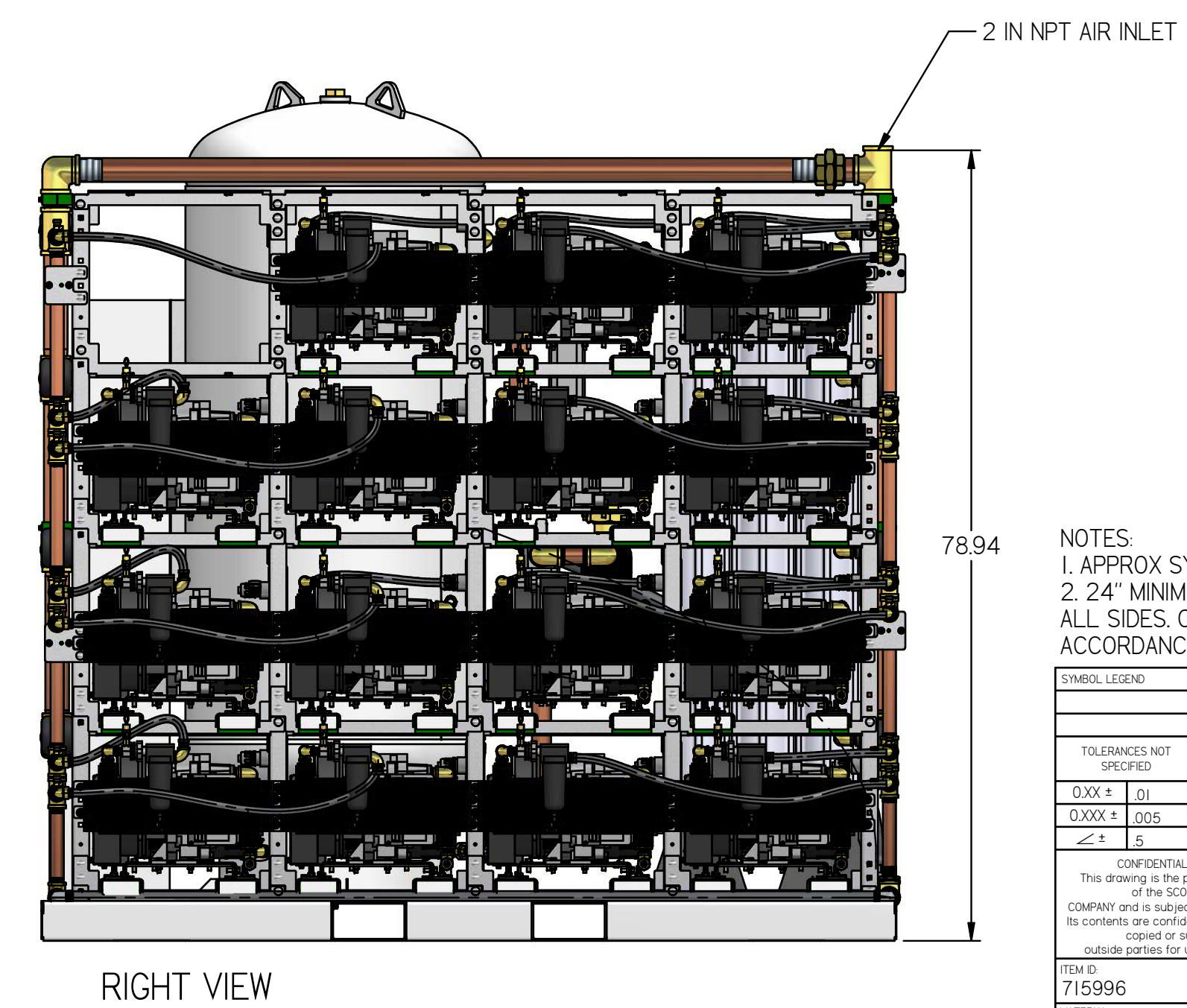
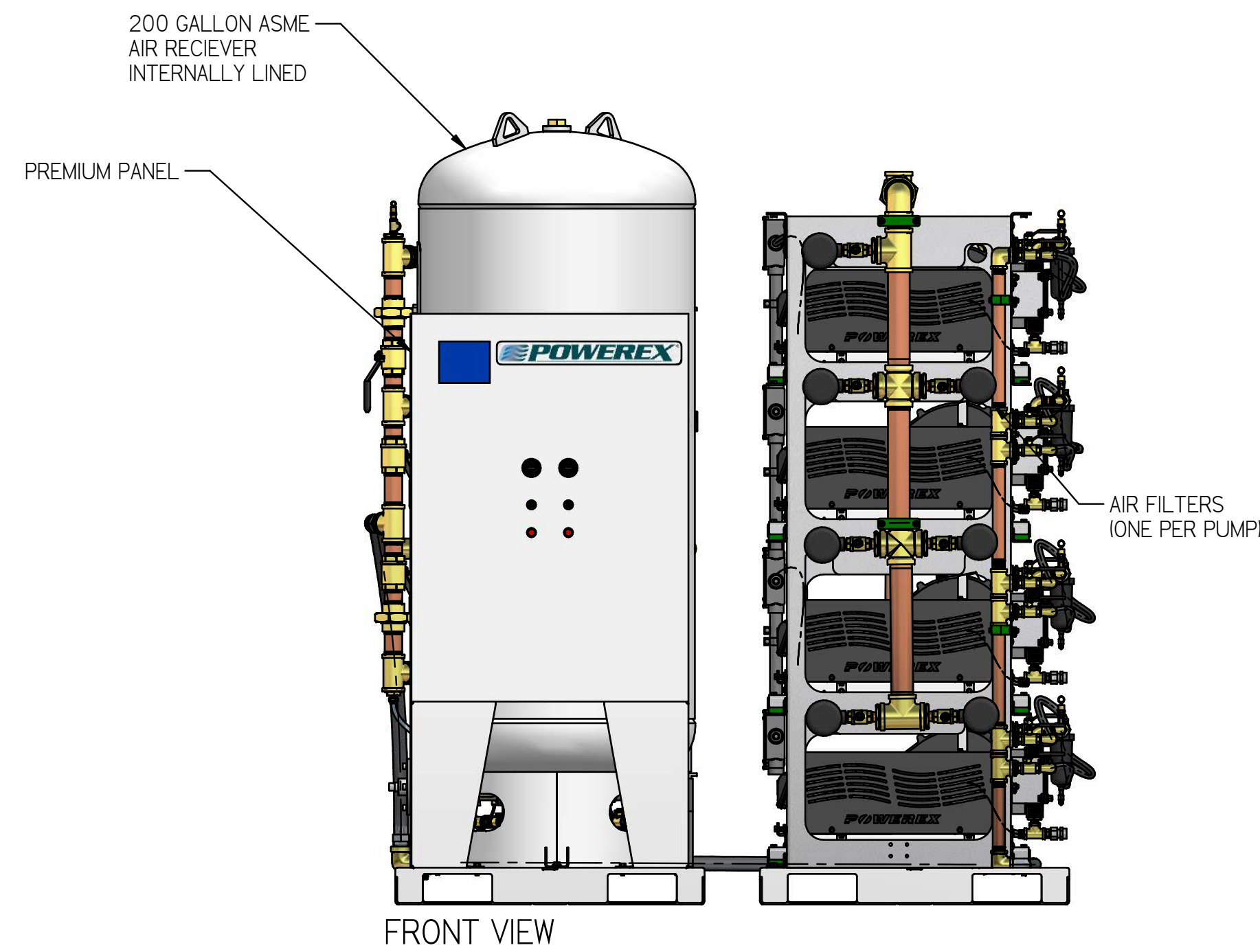
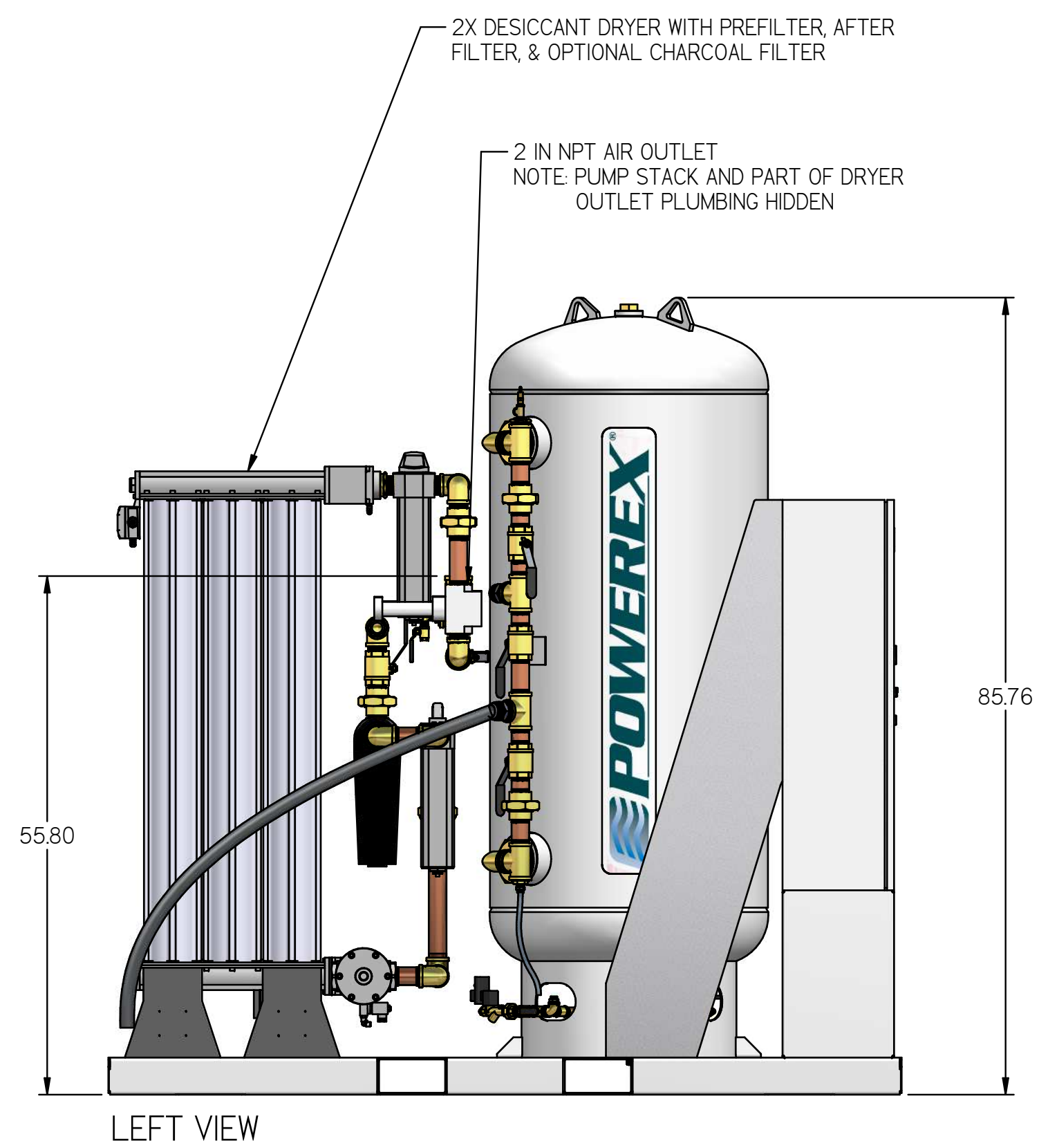
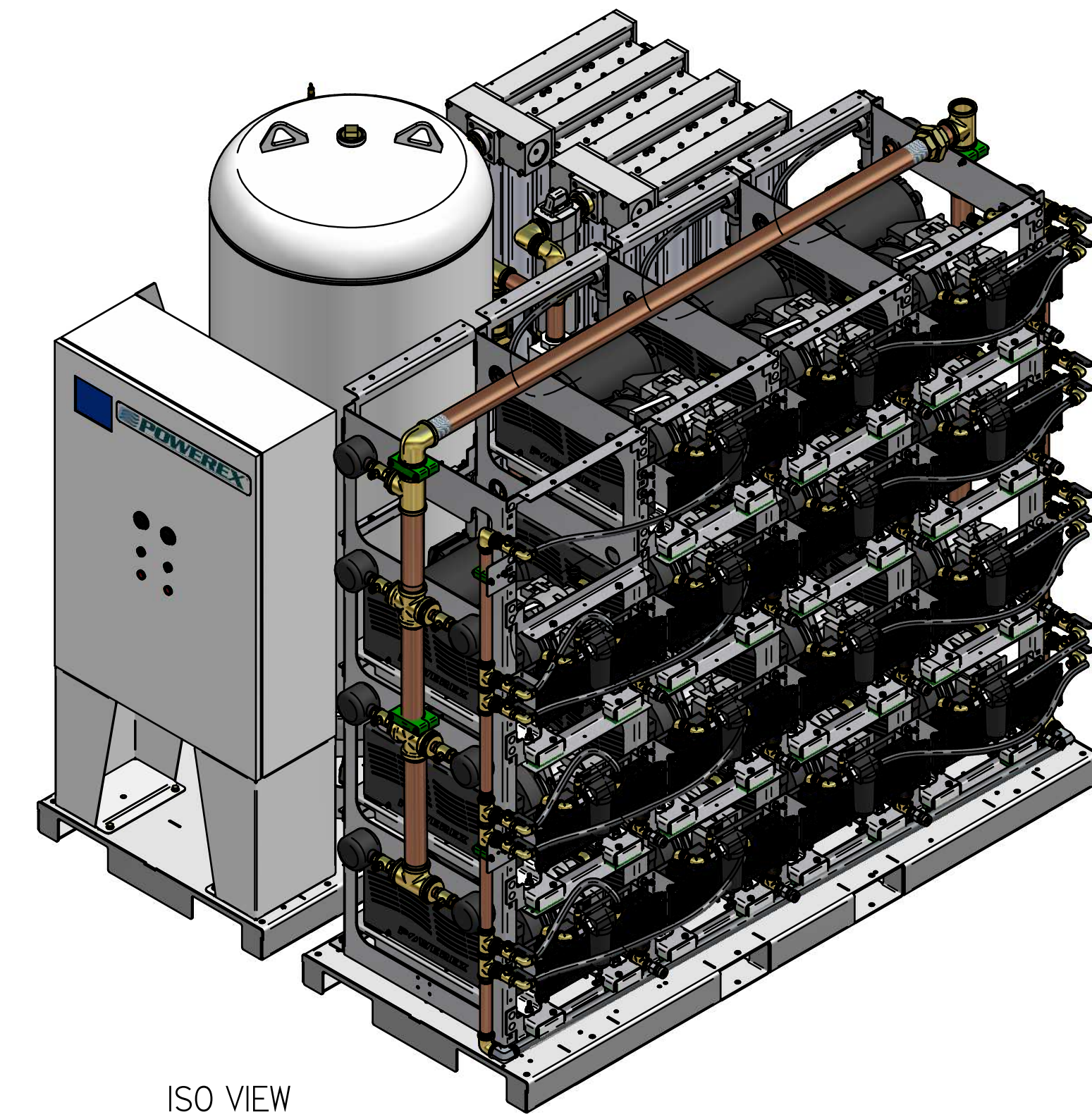
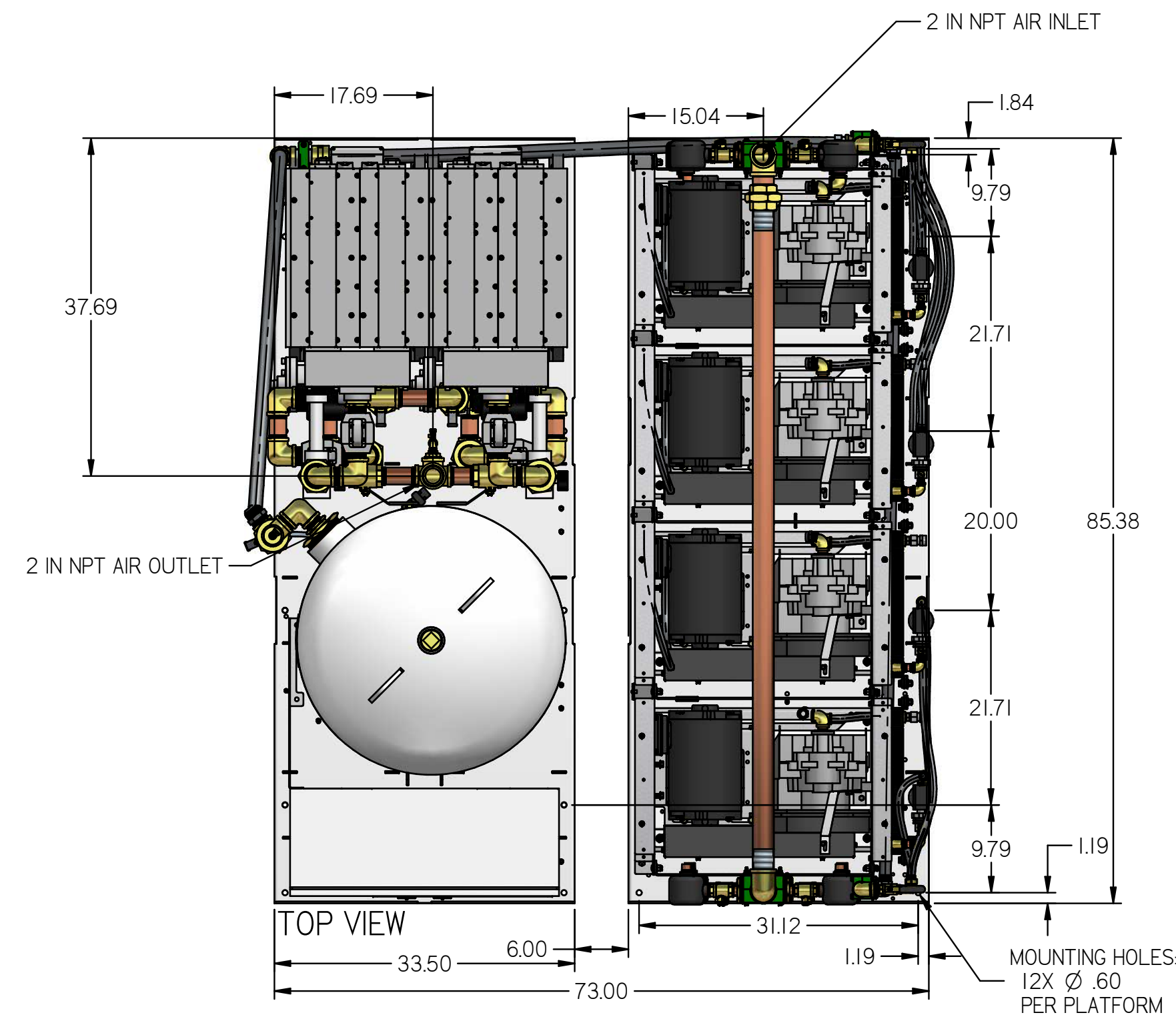


# LSP15A5

LAB SCROLL 15 HP  
PENTAPLEX WITH 200  
GALLON AIR RECIEVER

REVISION NOTES		
DESCRIPTION	ECN	PR/NOR
PRODUCTION RELEASE	PXECO169	N/A



- NOTES:
- APPROX SYSTEM WEIGHT: 6768 LB
  - 24" MINIMUM MAINTENANCE CLEARANCE RECOMMENDED ALL SIDES. CLEARANCE FOR CONTROL PANELS SHALL BE IN ACCORDANCE WITH OSHA/NEC REQUIREMENTS

SYMBOL LEGEND		DRAWINGS TO CONFORM TO CURRENT REVISION OF THE FOLLOWING ANSI STANDARDS:	
TOLERANCES NOT SPECIFIED	SOLID EDGE DRAWING	Y14.3 MULTI AND SECTIONAL VIEW DIMS	Y14.5 DIMENSIONING AND TOLERANCING
0.XXX ± .01		DO NOT SCALE DRAWING FOR DIMENSIONS	
0.XXX ± .005	INCH	SHEET 1 OF 4	SCALE 1:1.4, 2.9
<small>CONFIDENTIAL DISCLOSURE</small> This drawing is the property of POWEREX of the SCOTT FETTER COMPANY and is subject to return on demand. Its contents are confidential and must not be copied or submitted to outside parties for use or examination.		AUTHOR	APPROVALS ON FILE IN PLM
TITLE: 715996 MATERIAL: SEE PART DRAWINGS	ASoulek	ORIGINATION DATE: 11/5/2018	
DESCRIPTION: LAB SCROLL 15 HP PENTAPLEX WITH 200 GALLON AIR RECIEVER	DRAWING NUMBER: LSP15A5	REVISION: B	SIZE: D

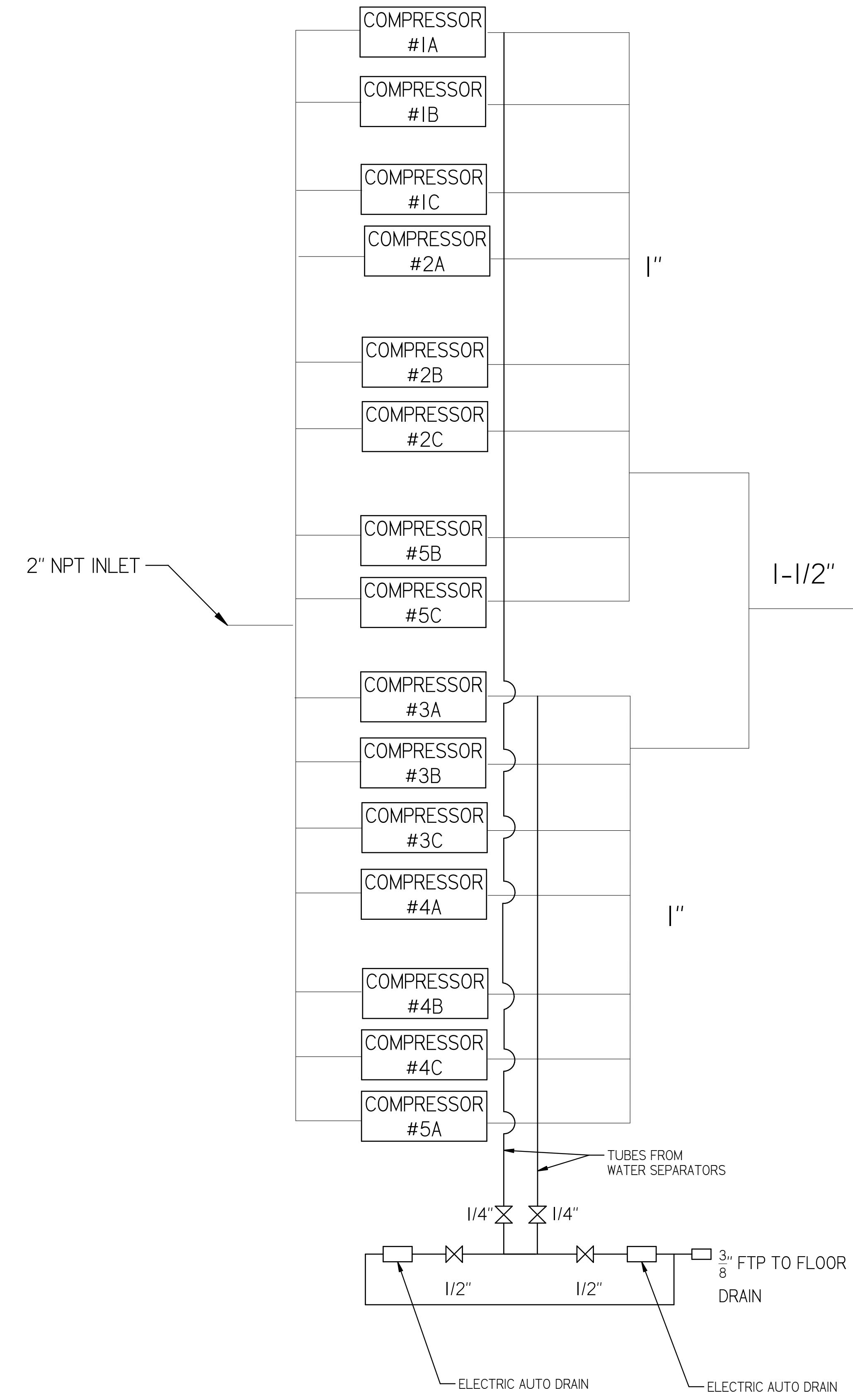




REVISION NOTES		
DESCRIPTION	ECN	PR/NOR
PRODUCTION RELEASE	PXECO169	N/A

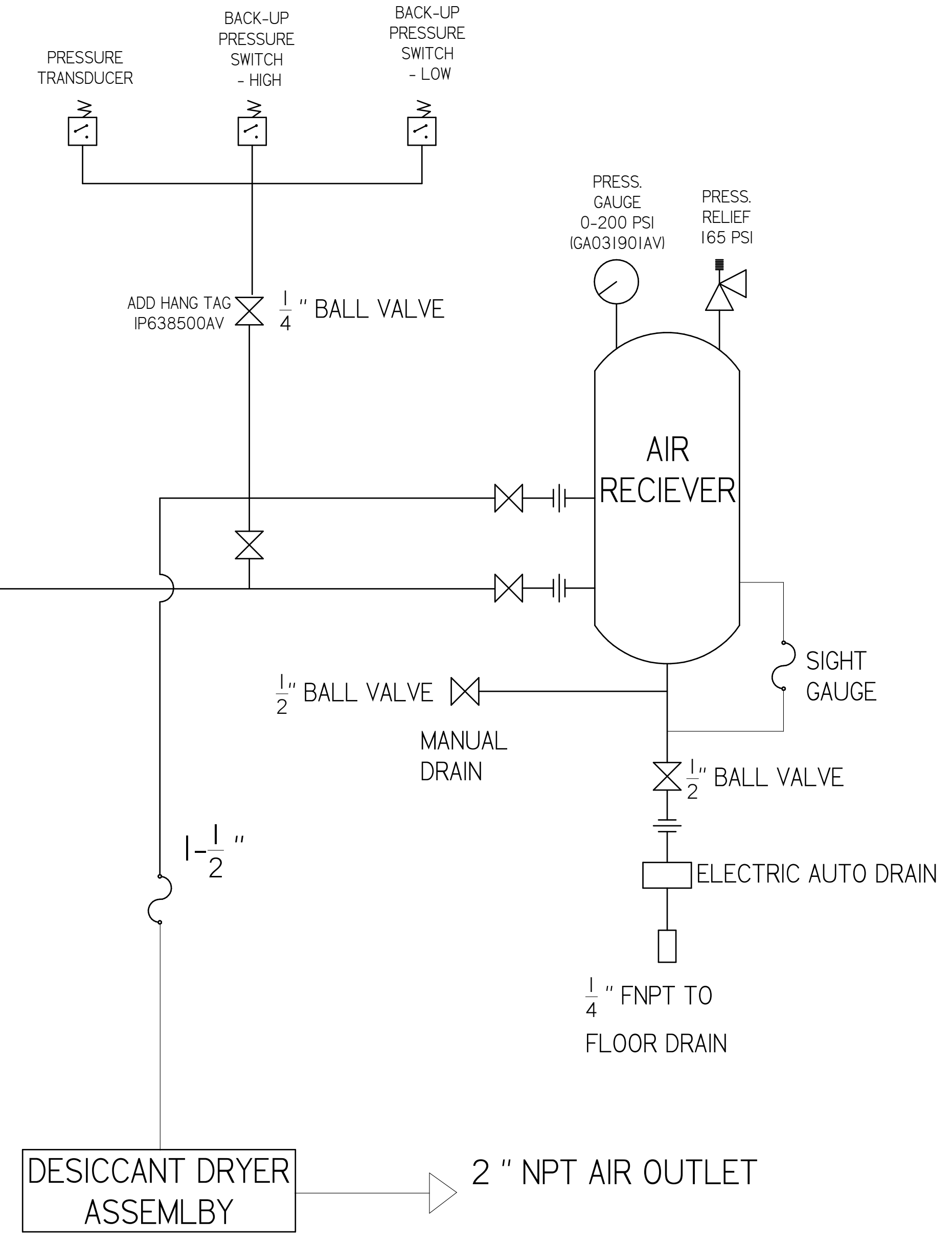
# LSP15A5

LAB SCROLL 15 HP  
PENTAPLEX WITH 200  
GALLON AIR RECIEVER  
FLOW DIAGRAM



NOTE: PLEXES ARRANGED AS SHOWN BELOW  
VIEW FROM AFTERCOOLER SIDE OF PUMP STACK

	5A	5B	5C
4A	3A	2A	1A
4B	3B	2B	1B
4C	3C	2C	1C

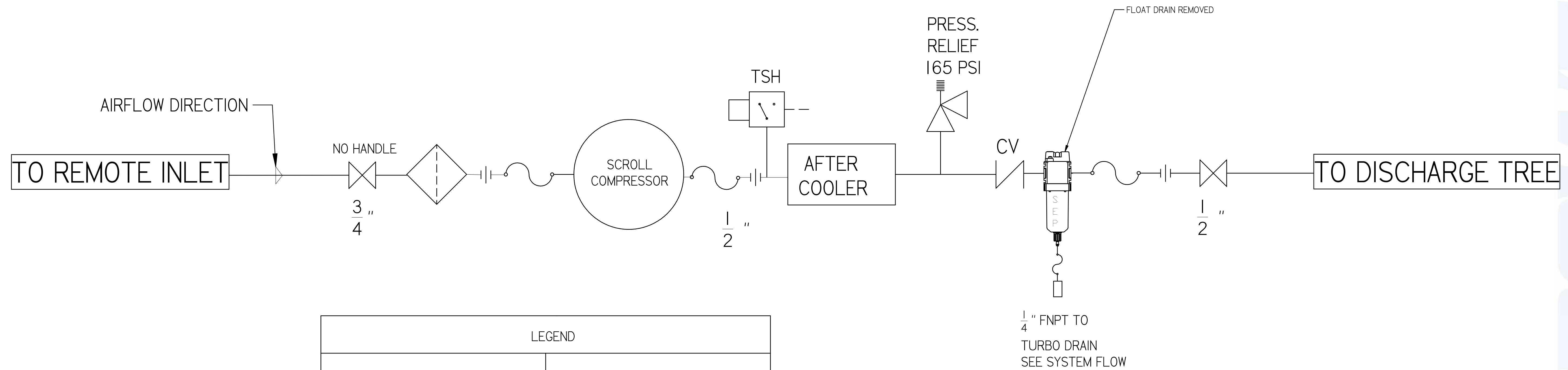


SYMBOL LEGEND		DRAWINGS TO CONFORM TO CURRENT REVISION OF THE FOLLOWING ANSI STANDARDS:	
TOLERANCES NOT SPECIFIED:		Y14.3 MULTI- AND SECTIONAL VIEW DIMS	
0.XXX ± .01	SOLID EDGE DRAWING	DO NOT SCALE DRAWING FOR DIMENSIONS	
0.XXX ± .005		SHEET 2 OF 4	SCALE 1:1
∠ ± .5	INCH	APPROVALS ON FILE IN PLM	
<small>CONFIDENTIAL DISCLOSURE</small> This drawing is the property of POWEREX of the SCOTT FETTER COMPANY and is subject to return on demand. Its contents are confidential and must not be copied or submitted to outside parties for use or examination.		Auteur	ORIGINATION DATE
<small>CONFIDENTIAL DISCLOSURE</small> This drawing is the property of POWEREX of the SCOTT FETTER COMPANY and is subject to return on demand. Its contents are confidential and must not be copied or submitted to outside parties for use or examination.		ASoulek	11/5/2018
ITEM NO: 715996 MATERIAL: SEE PART DRAWINGS			
DESCRIPTION: LAB SCROLL 15 HP PENTAPLEX WITH 200 GALLON AIR RECIEVER		DRAWING NUMBER: LSP15A5	REVISION: B
			SIZE: D

REVISION NOTES		
DESCRIPTION	ECN	PR/NOR
PRODUCTION RELEASE	PXECO169	N/A

# LSP15A5

LAB SCROLL 15 HP  
PENTAPLEX WITH 200  
GALLON AIR RECIEVER  
LAB COMPRESSOR  
FLOW DIAGRAM



LEGEND	
	RELIEF VALVE
	INTAKE FILTER
	AIR FILTER
	3 WAY VALVE
	CARBON FILTER
	BALL VALVE
	PRESSURE SWITCH
	REGULATOR
	SEPARATOR
	CHECK VALVE
	FLEX LINE
	TSH HIGH TEMP SWITCH

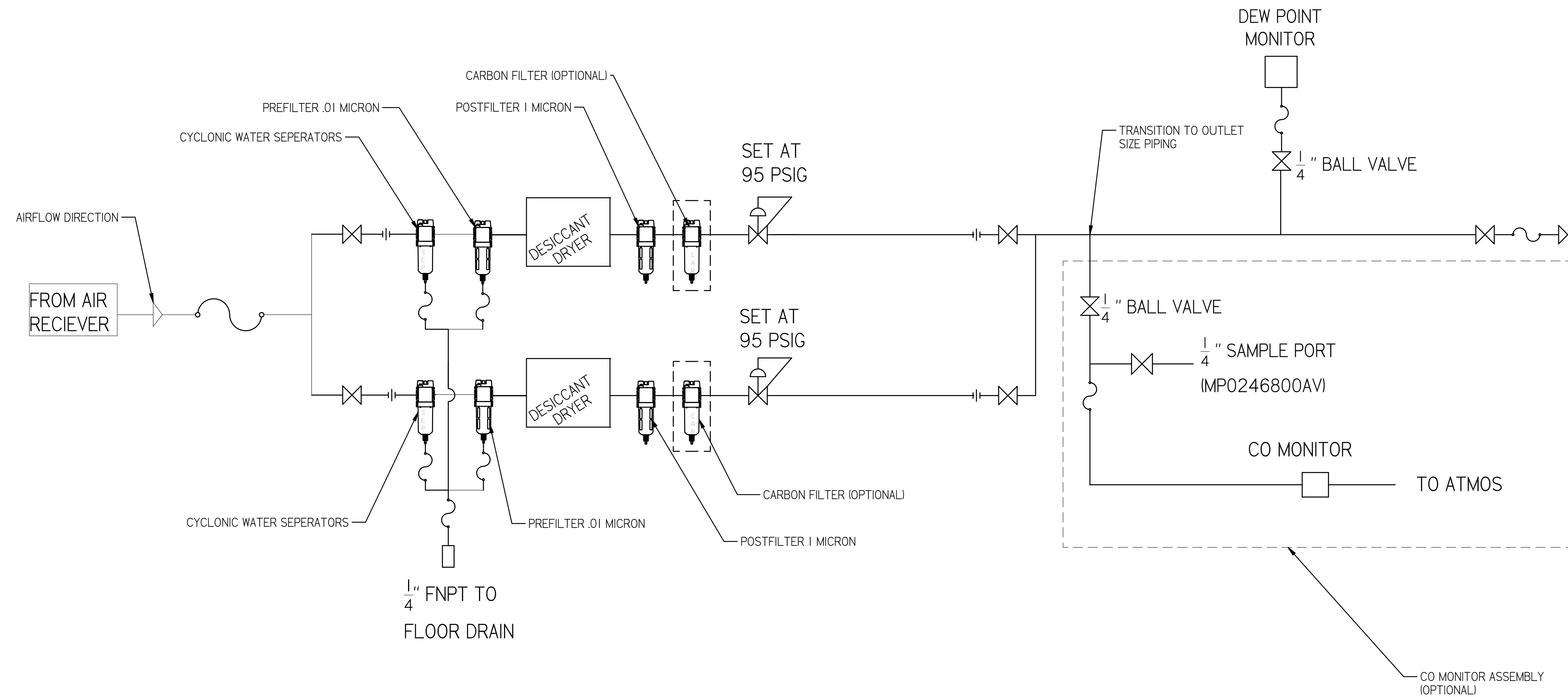
SYMBOL LEGEND	DRAWINGS TO CONFORM TO CURRENT REVISION OF THE FOLLOWING ANSI STANDARDS:		
	Y14.3 MULTI-VIEW	Y14.3 SECTIONAL VIEW	Y14.5 DIMENSIONING AND TOLERANCING
TOLERANCES NOT SPECIFIED	SOLID EDGE DRAWING	DO NOT SCALE DRAWING FOR DIMENSIONS	
0.001 ± .001			
0.005 ± .005			
0.010 ± .010			
0.020 ± .020			
0.050 ± .050			
0.100 ± .100			
0.200 ± .200			
0.500 ± .500			
1.000 ± 1.000			
2.000 ± 2.000			
5.000 ± 5.000			
10.000 ± 10.000			
20.000 ± 20.000			
50.000 ± 50.000			
100.000 ± 100.000			
CONFIDENTIAL DISCLOSURE: This drawing is the property of POWEREX of the SCOTT FETTER COMPANY and is subject to return on demand. Its contents are confidential and must not be copied or submitted to outside parties for use or examination.	AUTHOR	ORIGINATION DATE	APPROVALS ON FILE IN PLM
	ASoulek	11/5/2018	
ITEM NO: 715996			
MATERIAL: SEE PART DRAWINGS	150 PRODUCTION DRIVE, HARRISON OH 45030 (888) 768-7079		
DESCRIPTION: LAB SCROLL 15 HP PENTAPLEX WITH 200 GALLON AIR RECIEVER	DRAWING NUMBER: LSP15A5	REVISION: B	SIZE: D

REVISION NOTES		
DESCRIPTION	ECN	PR/NOR
PRODUCTION RELEASE	PXECO169	N/A

# LSP15A5

LAB SCROLL 15 HP  
PENTAPLEX WITH 200  
GALLON AIR RECIEVER

## LAB DRYER FLOW DIAGRAM



PIPE SIZE CHART		
PUMP COUNT	DRYER PLUMBING SIZE	OUTLET PIPE SIZE
2	1/2"	1/2"
3	1/2"	1"
4	1"	1-1/4"
6	1"	1-1/2"
8	1"	1-1/2"
9	1"	1-1/2"
12	1-1/2"	2"
15	1-1/2"	2"
18	1-1/2"	2"

SYMBOL LEGEND		DRAWINGS TO CONFORM TO CURRENT REVISION OF THE FOLLOWING ANSI STANDARDS: #14.3 MULTI AND SECTIONAL VIEW DIMS #14.5 DIMENSIONING AND TOLERANCING	
TOLERANCES NOT SPECIFIED	SOLID EDGE DRAWING	DO NOT SCALE DRAWING FOR DIMENSIONS	
0.XXX ± .01	INCH	SHEET 4 OF 4	SCALE 1:1
0.XXX ± .005			
± .5			
<small>CONFIDENTIAL DISCLOSURE</small> This drawing is the property of POWEREX of the SCOTT FETTER COMPANY and is subject to return on demand. Its contents are confidential and must not be copied or submitted to outside parties for use or examination.		AUTHOR	ORIGINATION DATE
<small>FROM FILE:</small> 715996		ASoulek	11/5/2018
<small>MATERIAL:</small> SEE PART DRAWINGS			
<small>DESCRIPTION:</small> LAB SCROLL 15 HP PENTAPLEX WITH 200 GALLON AIR RECIEVER		<small>DRAWING NUMBER:</small> LSP15A5	<small>REVISION:</small> B
			<small>SIZE:</small> D

