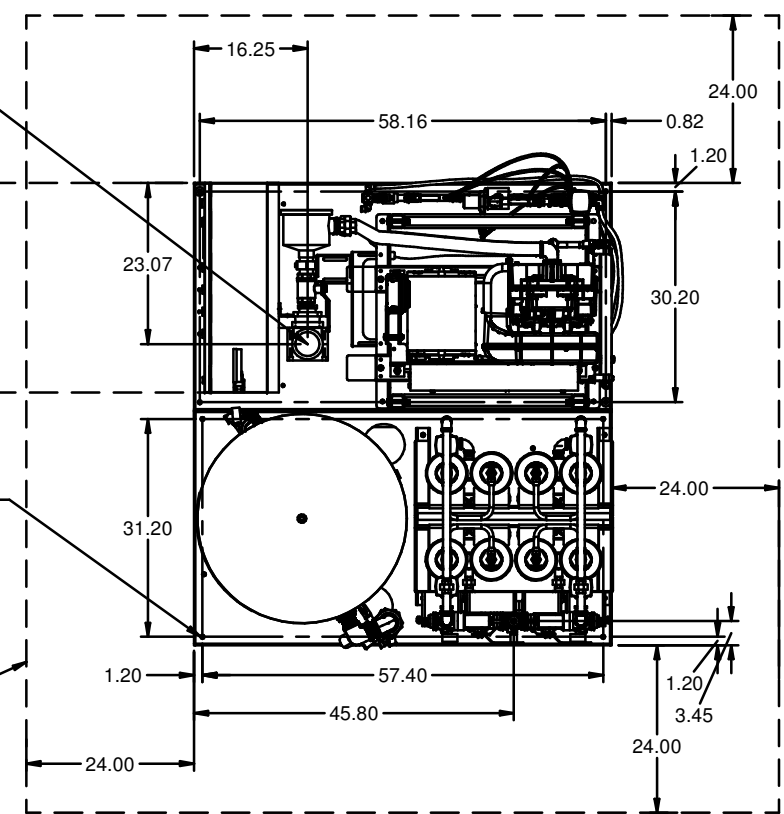


REV	ZONE	REVISION	DATE	ECN	NAME	CHKD
B-1	ALL	RELEASE TO PRODUCTION	2/23/18		MAH	GES

MINIMUM RECOMMENDED ELECTRICAL PANEL CLEARANCE PER OSHA/NEC REQUIREMENTS

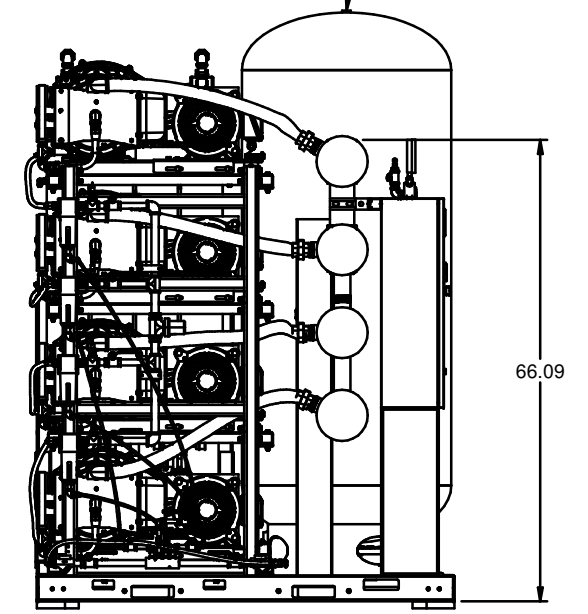
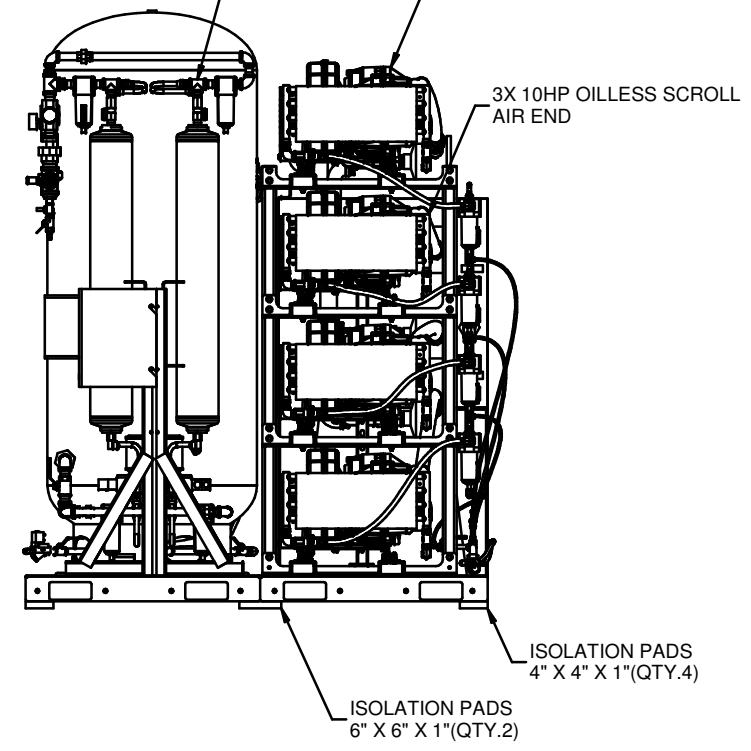
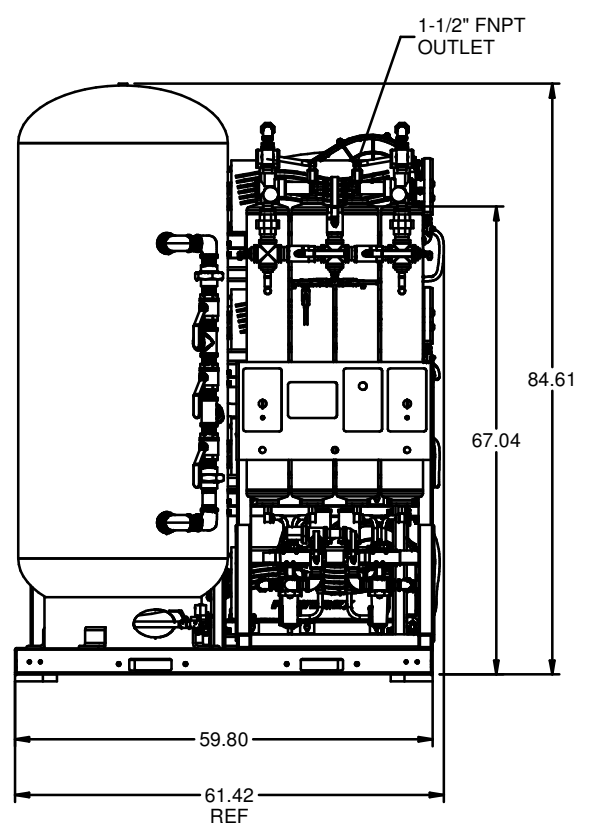
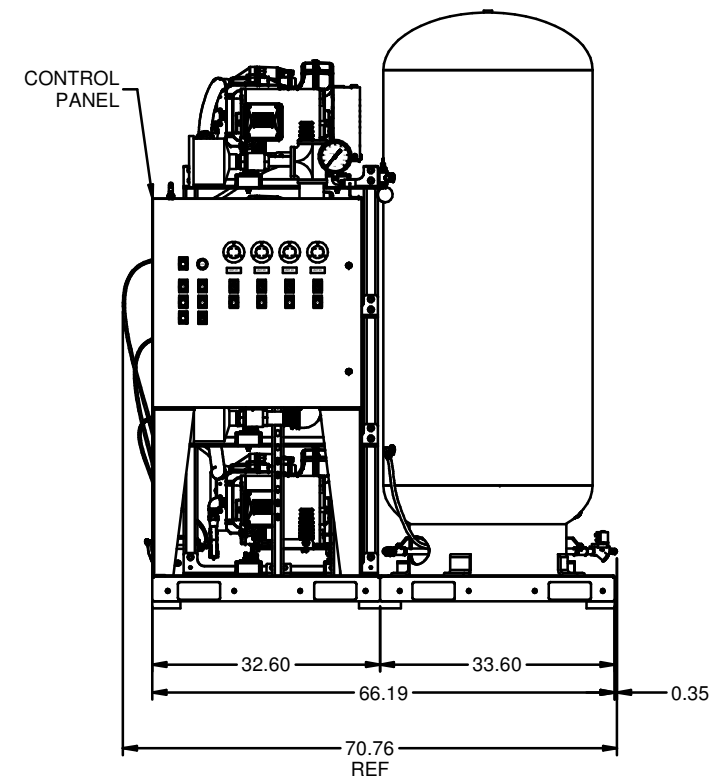
MINIMUM RECOMMENDED MAINTENANCE CLEARANCE



2X DESICCANT DRYERS W/ DEW POINT MONITOR, CARBON MONOXIDE MONITOR, PRE FILTER, AFTER FILTER & OPTIONAL CHARCOAL FILTER.

FUTURE EXPANSION BASEMOUNT

200 GALLON ASME AIR RECEIVER INTERNALLY LINED

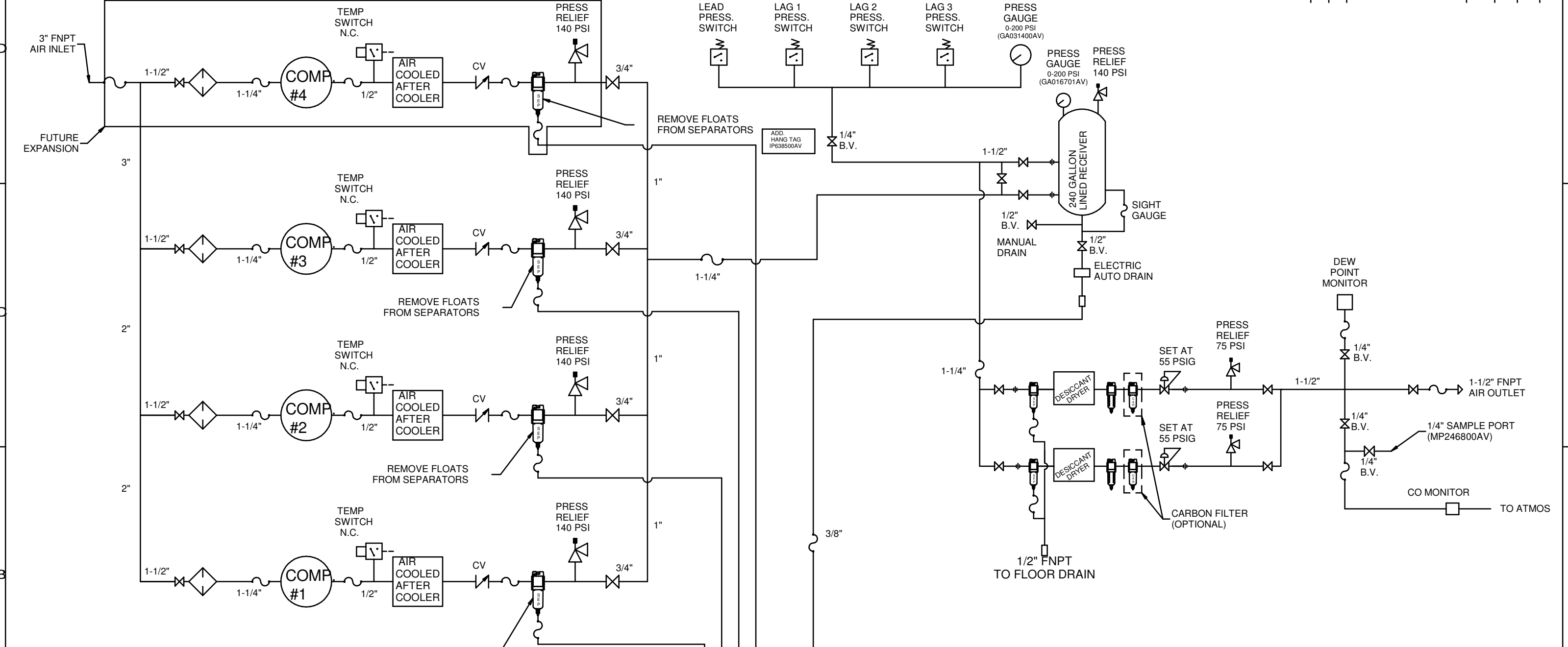


NOTE: SYSTEM DESIGNED IN COMPLIANCE WITH US NFPA'99, LATEST EDITION.

TOLERANCES NOT SPECIFIED XX ± XXX ± \angle (REG.) ±	AUTOCAD REL2014 L1 INCH	DO NOT SCALE DRAWING FOR DIMENSIONS Sheet 1 of 2 SCALE 1:14
CONFIDENTIAL DISCLOSURE This drawing is the property of POWEREX, INC. or the SCOTT FETZER COMPANY and subject to return on demand. The contents are confidential and must not be copied or submitted to outside parties for use or examination.	ADDITIONAL CONTROL REQ'D BRINELL HARDNESS	Drawings to conform to the current revision of the following ANSI standards: Y14.3 Multi and sectional view dgs. Y14.9 Dimensioning and tolerancing
MATERIAL N/A	DRAWN BY MAH	CHECKED BY GES
PART NAME TRIPLEX MED SCROLL EXPANDABLE 10HP 200GAL BASEMOUNT DUPLEX DESICCANT	APPROVED BY KMD	MATERIALS DFG
DWG NO MST10B5-EX4	DATE 2/23/18	DATE 2/23/18
SIZE D	DATE 2/23/18	DATE 2/23/18



REV	ZONE	REVISION	DATE	ECN	NAME	CHKD
B-1	ALL	RELEASE TO PRODUCTION	2/23/18	PROCESS	MAH	GES



LEGEND

	RELIEF VALVE		PRESSURE SWITCH
	INTAKE FILTER		REGULATOR
	AIR FILTER		SEPARATOR
	CARBON FILTER		CHECK VALVE
	BALL VALVE		FLEX LINE
			HIGH TEMP SWITCH
			UNION

- NOTES:**
- 1) WITHOUT EXPANSION: IF LAG 2 COMPRESSOR IS ENERGIZED, ALARM WILL OCCUR.
WITH EXPANSION: IF LAG 3 COMPRESSOR IS ENERGIZED, ALARM WILL OCCUR.
 - 2) PIPING TO THE INLET BY OTHERS AND TO BE PER NFPA99 4-3.1.1.9(b)
 - 3) INSTRUMENTS DOWN STREAM OF SOURCE VALVE TO BE SUPPLIED BY OTHERS.

<p>SYMBOL LEGEND</p> <p>⊖ = MINUS DRAFT ⊕ = PLUS DRAFT</p>	<p>⊖ = ADDITIONAL CONTROL REQ'D ⊕ = BRINELL HARDNESS</p>	<p>Drawings to conform to the current revision of the following ANSI standards: 1:4 Multi and sectional view degs. 1:8 3rd angle dimension and tolerancing</p>
<p>TOLERANCES NOT SPECIFIED</p> <p>XX ± XXX ± ▲ REG. ±</p>	<p>AUTOCAD REL2014 LT</p> <p>DO NOT SCALE DRAWING FOR DIMENSIONS</p> <p>Sheet 2 of 2</p> <p>SCALE 1:14</p>	
<p>CONFIDENTIAL DISCLOSURE This drawing is the property of POWEREX, INC. or the SCOTT FETZER COMPANY and subject to return to sender. Its contents are confidential and must not be copied or submitted to outside parties for use on any other job.</p>		
<p>MATERIAL N/A</p>	<p>DRAWN BY MAH</p>	<p>CHECKED BY GES</p>
<p>PART NAME TRIPLEX MED SCROLL EXPANDABLE PACKAGE FLOW SCHEMATIC</p>	<p>POWEREX</p> <p>DWG NO MST10B5-EX4</p>	
		<p>SIZE D</p>

REV	ZONE	REVISION	DATE	ECN	NAME	CHKD
B-1	ALL	RELEASE TO PRODUCTION	2/23/18	PRE3250	MAH	GES

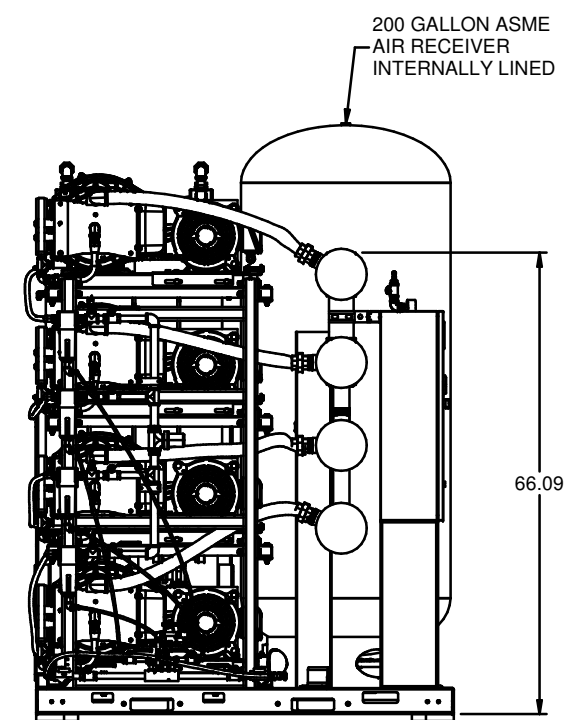
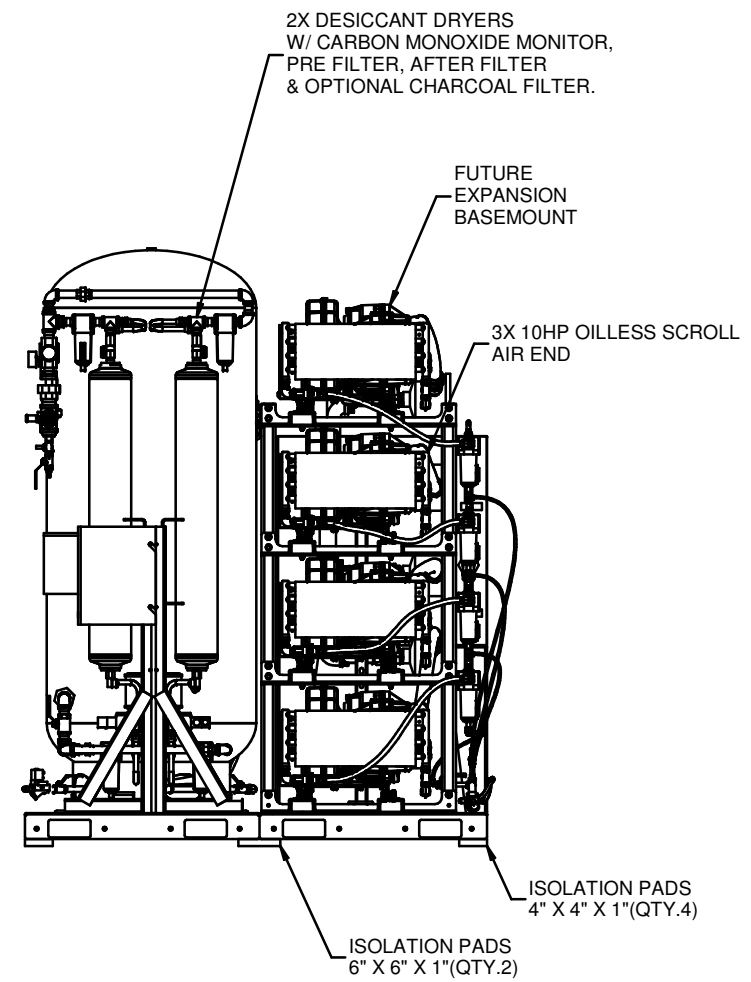
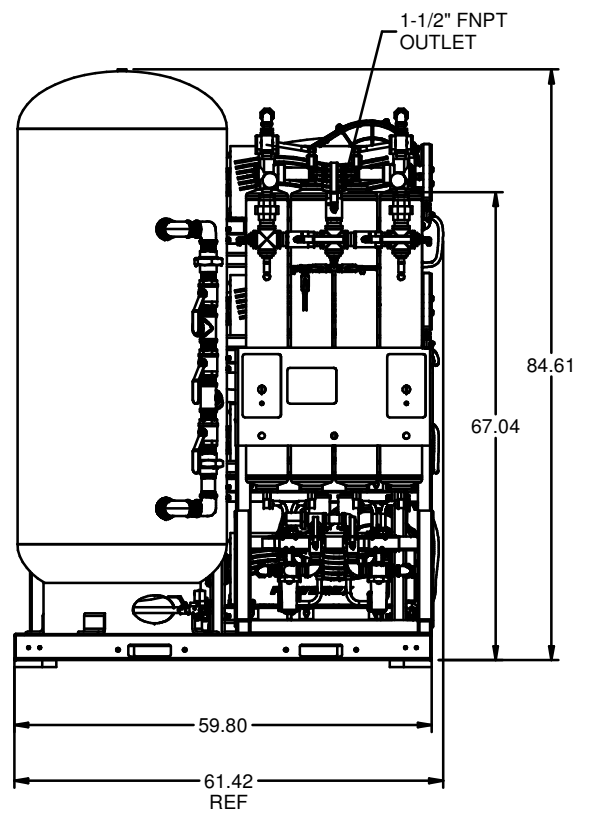
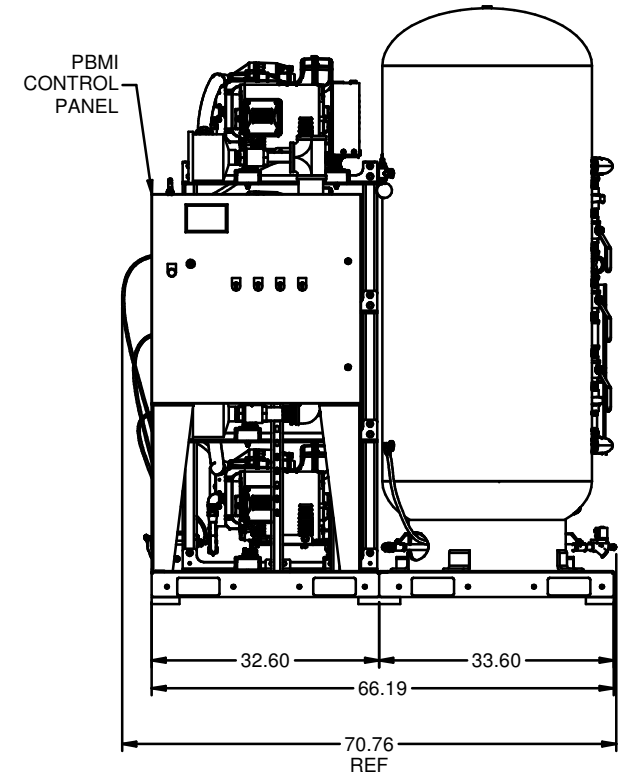
MINIMUM RECOMMENDED ELECTRICAL PANEL CLEARANCE PER OSHA/NEC REQUIREMENTS

MINIMUM RECOMMENDED MAINTENANCE CLEARANCE

2X DESICCANT DRYERS W/ CARBON MONOXIDE MONITOR, PRE FILTER, AFTER FILTER & OPTIONAL CHARCOAL FILTER.

FUTURE EXPANSION BASEMOUNT

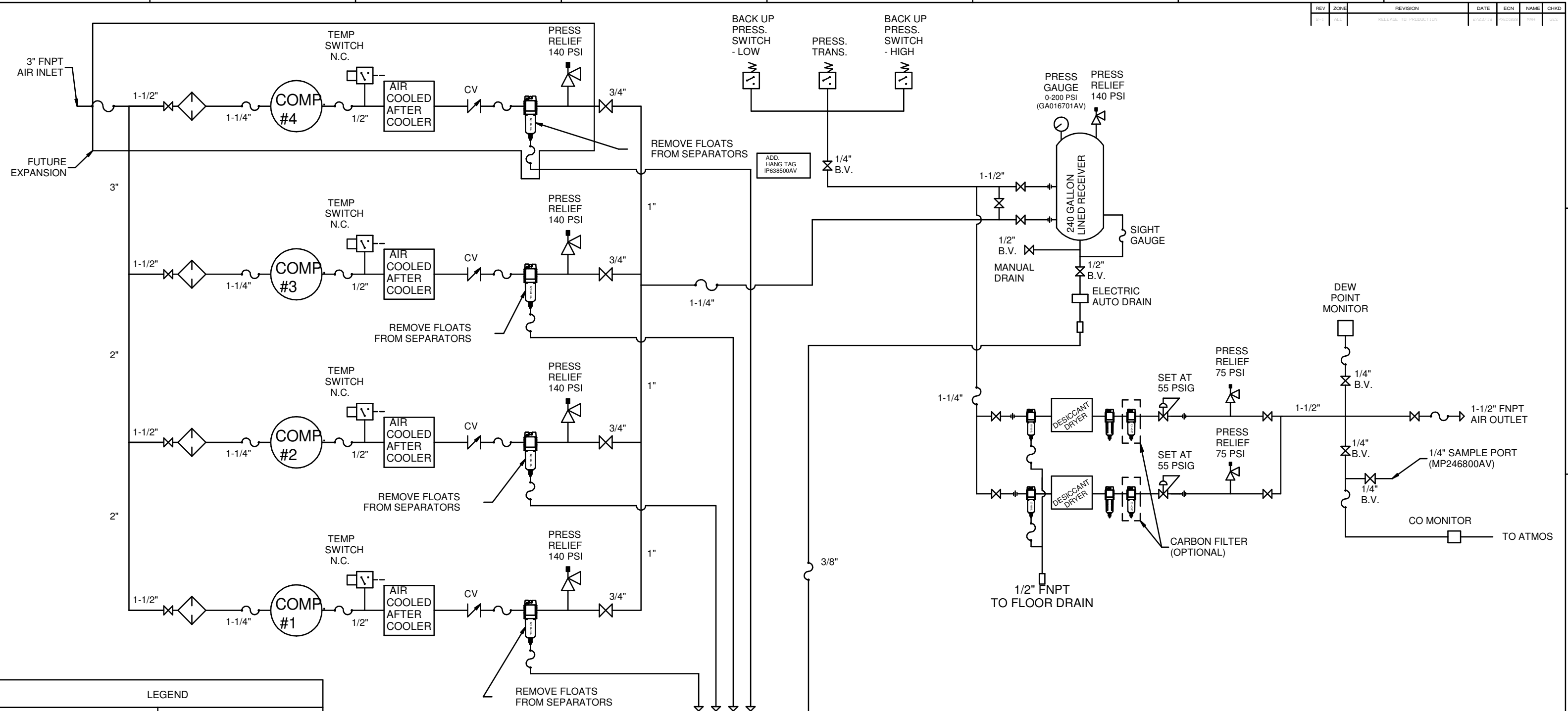
200 GALLON ASME AIR RECEIVER INTERNALLY LINED



NOTE: SYSTEM DESIGNED IN COMPLIANCE WITH US NFPA'99, LATEST EDITION.

TOLERANCES NOT SPECIFIED: XX ± XXX ± 2 DEC ±	AUTOCAD REL2014 LT INCH	DO NOT SCALE DRAWING FOR DIMENSIONS Sheet 1 of 2 SCALE 1:14
CONFIDENTIAL DISCLOSURE This drawing is the property of POWEREX, INC. of the SCOTT FETZER COMPANY and subject to return on demand. Its contents are confidential and must not be copied or submitted to outside parties for use or reproduction.	DRAWN BY: MAH CHECKED BY: GES APPROVED BY: KMD, DFG DATE: 2/23/18	POWEREX TRIPLEX MED SCROLL EXPANDABLE 10HP 200GAL BASEMOUNT DUPLEX DESICCANT MW1005-EX4

REV	ZONE	REVISION	DATE	ECN	NAME	CHKD
3-1	ALL	RELEASE TO PRODUCTION	2/23/18		MAH	GES



LEGEND

	RELIEF VALVE		PRESSURE SWITCH
	INTAKE FILTER		REGULATOR
	AIR FILTER		SEPARATOR
	CARBON FILTER		CHECK VALVE
	BALL VALVE		FLEX LINE
			HIGH TEMP SWITCH
			UNION

- NOTES:**
- 1) WITHOUT EXPANSION: IF LAG 2 COMPRESSOR IS ENERGIZED, ALARM WILL OCCUR.
WITH EXPANSION: IF LAG 3 COMPRESSOR IS ENERGIZED, ALARM WILL OCCUR.
 - 2) PIPING TO THE INLET BY OTHERS AND TO BE PER NFPA99 4-3.1.1.9(b)
 - 3) INSTRUMENTS DOWN STREAM OF SOURCE VALVE TO BE SUPPLIED BY OTHERS.

<ul style="list-style-type: none"> MINUS DRAFT PLUS DRAFT 	<ul style="list-style-type: none"> ADDITIONAL CONTROL REQ'D BRINELL HARDNESS 	Drawings to conform to the current revision of the following ANSI standards: Y14.3 Multi and sectional viewings Y14.9 Dimensioning and tolerancing
TOLERANCES NOT SPECIFIED XXX .5 Z REG .2	AUTOCAD REL2014 LT INCH	DO NOT SCALE DRAWING FOR DIMENSIONS Sheet 2 of 2 SCALE 1:14
<small>CONFIDENTIAL DISCLOSURE: This drawing is the property of POWEREX, Inc. of the SCOTT PETERZ COMPANY and subject to return on demand. Its contents are confidential and must not be copied or submitted to outside parties for use or reproduction.</small>		
DRAWN BY: MAH CHECKED BY: GES APPROVED BY: KMD, DFG	2/23/18 2/23/18 2/23/18 2/23/18	 15000 Highway 118 • Houston, TX 77058 Ph: 888-769-7979 Fax: (513) 367-3125
MATERIAL: N/A PART NAME: TRIPLEX MED SCROLL EXPANDABLE PACKAGE FLOW SCHEMATIC	DWG NO: MST10B5-EX4	SIZE: D