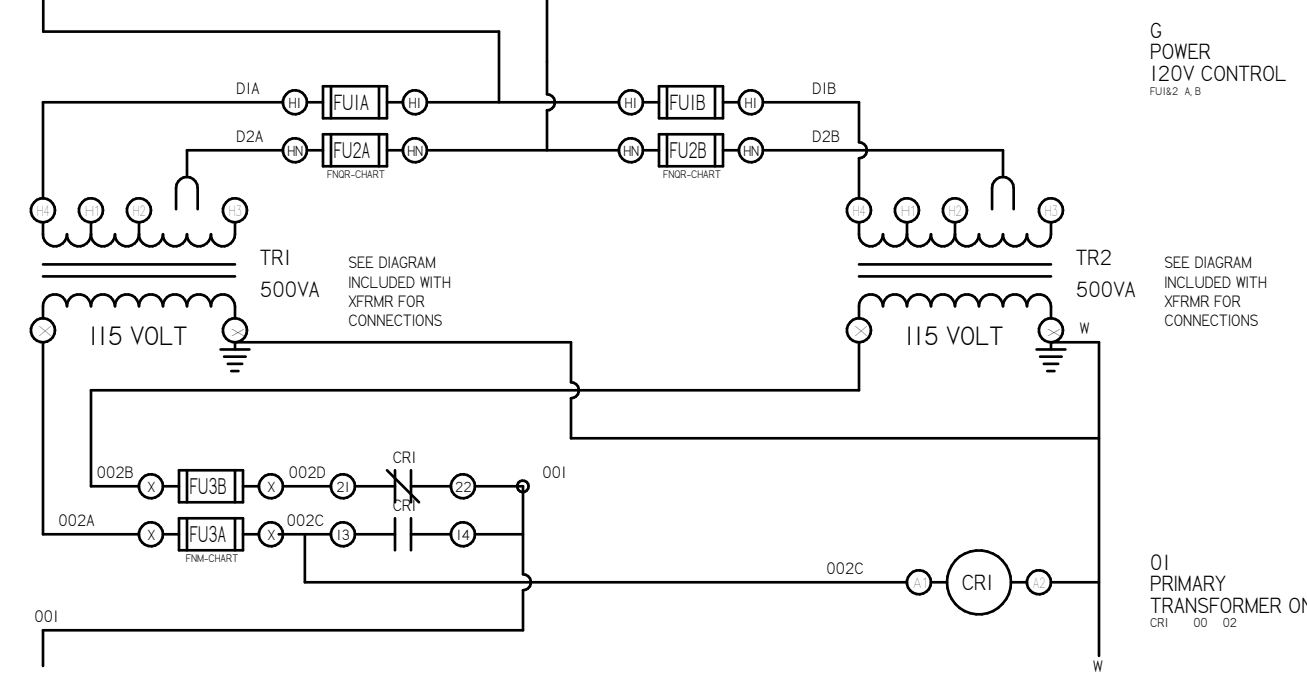
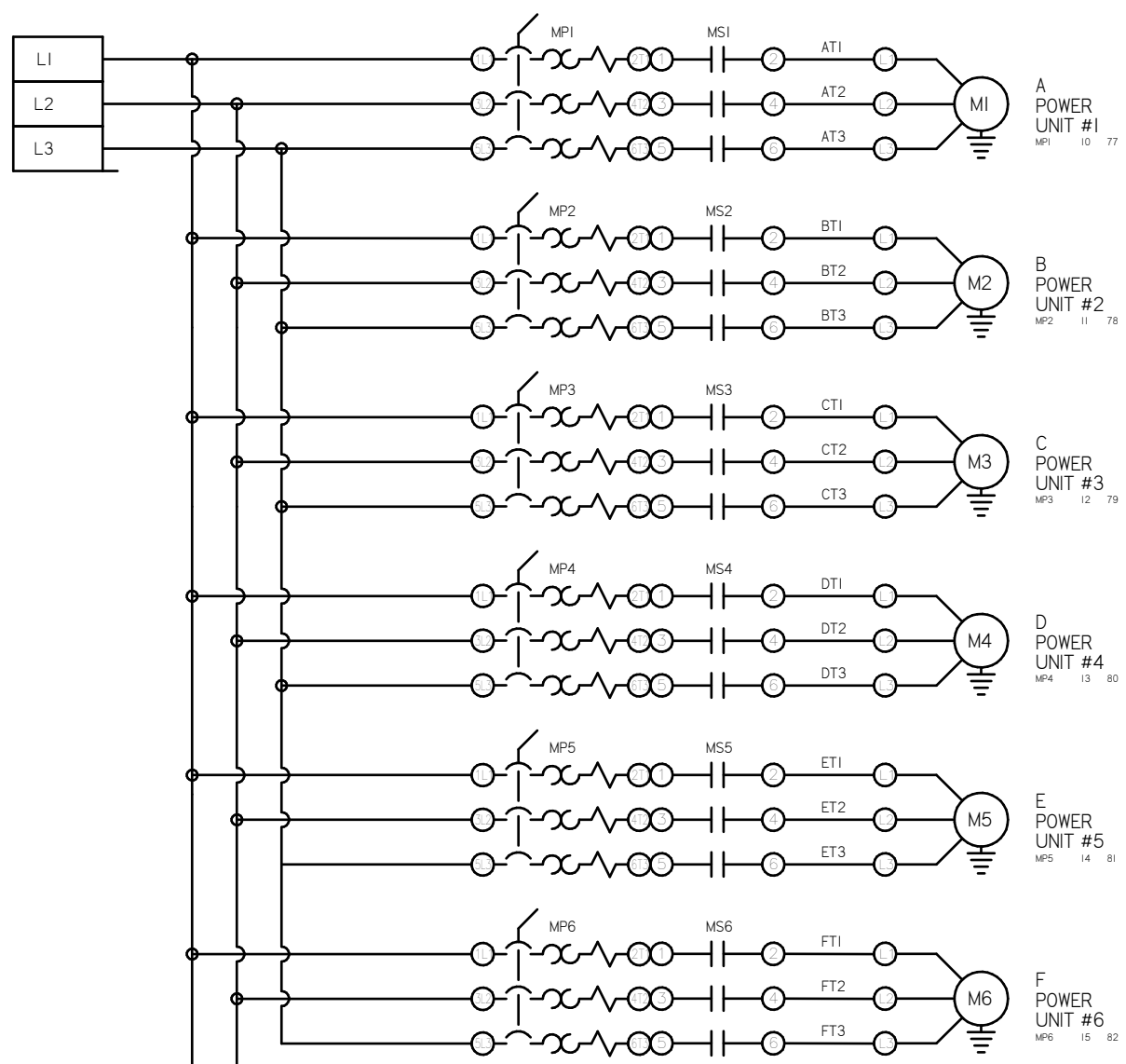


REV	REVISION	DATE	ECN	NAME	CHKD
B-1	RELEASE TO PRODUCTION	10/16/15	PXEC0092	AJL	KMD
C	ADDED FAN WIRING	8/27/18	PXEC0169	AKH	KMD



OPTIONAL:

SINGLE CYLINDER AND SCROLL PUMPS

DOUBLE-CYLINDER PUMPS

BACNET, WEBSVR, TRIPLE-CYLINDER PUMPS



CONFIDENTIAL DISCLOSURE
This drawing is the property of the CAMPBELL GROUP of the SCOTT FETZER COMPANY and subject to return on demand. Its contents are confidential and must not be copied or submitted to outside parties for use or examination.

DRAWN BY	CHECKED BY	ENGINEERING APPROVAL
AJL	KMD	KMD
10/16/15	10/16/15	10/16/15

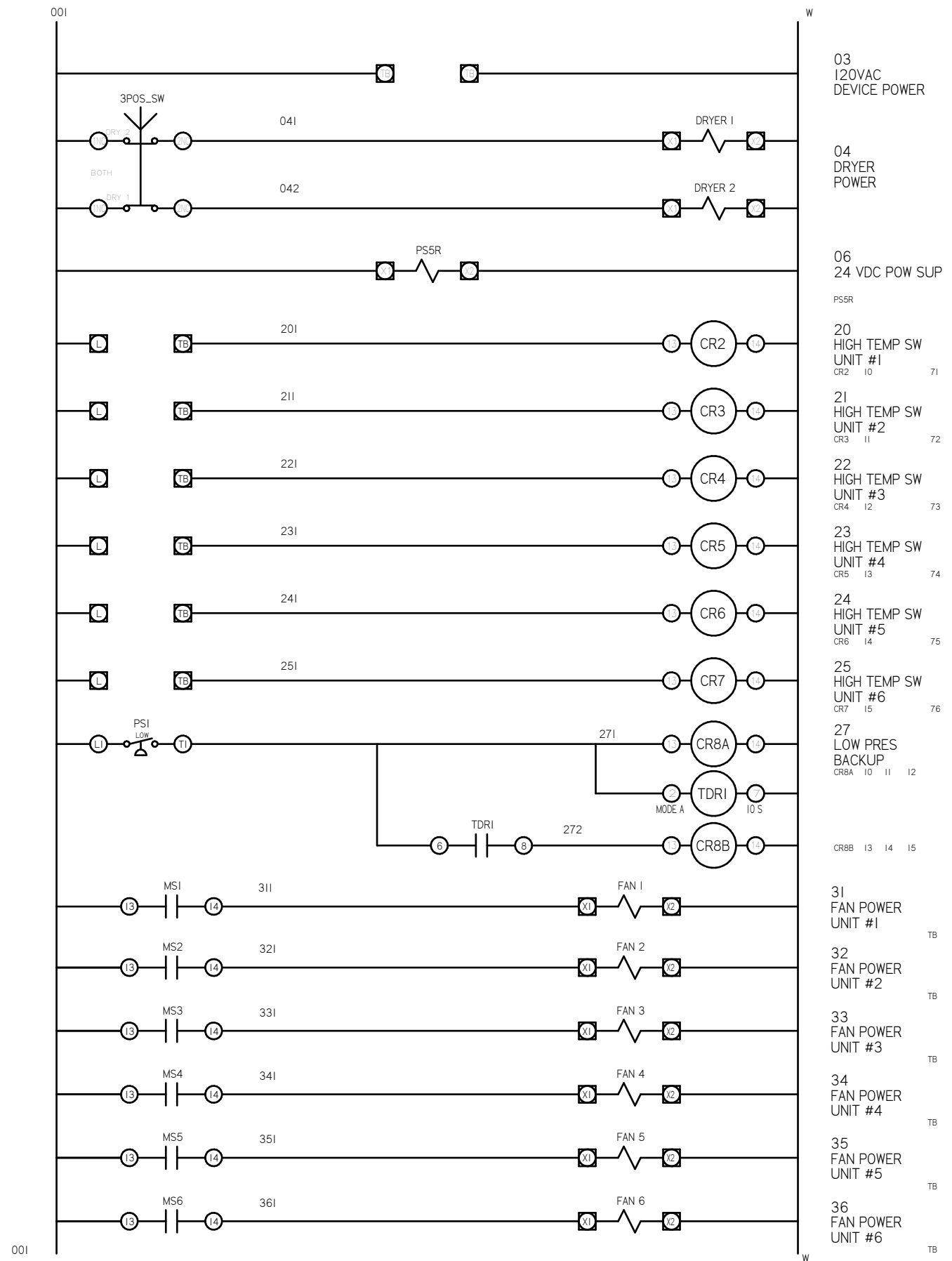
PANEL TYPE
HEX LAB COMP
HMI, NFPA

DWG. TYPE
WIRING

DWG. NO.
PXMI-LA616

SHEET	SIZE
W-1	B

REV	REVISION	DATE	ECN	NAME	CHKD
B-1	RELEASE TO PRODUCTION	10/16/15	22545	AJL	KMD
C	ADDED FAN WIRING	8/27/18	PXEC0165	AKH	KMD



OPTIONAL:	SINGLE CYLINDER AND SCROLLPUMPS	<input checked="" type="checkbox"/>
	DOUBLE-CYLINDER PUMPS	<input type="checkbox"/>
BACNET, WEBSVR,	TRIPLE-CYLINDER PUMPS	<input type="checkbox"/>



CONFIDENTIAL DISCLOSURE:
This drawing is the property of the CAMPBELL GROUP of the SCOTT FETZER COMPANY and subject to return on demand. Its contents are confidential and must not be copied or submitted to outside parties for use or examination.

DRAWN BY	CHECKED BY	ENGINEERING APPROVAL
AJL	KMD	KMD
10/16/15	10/16/15	10/16/15

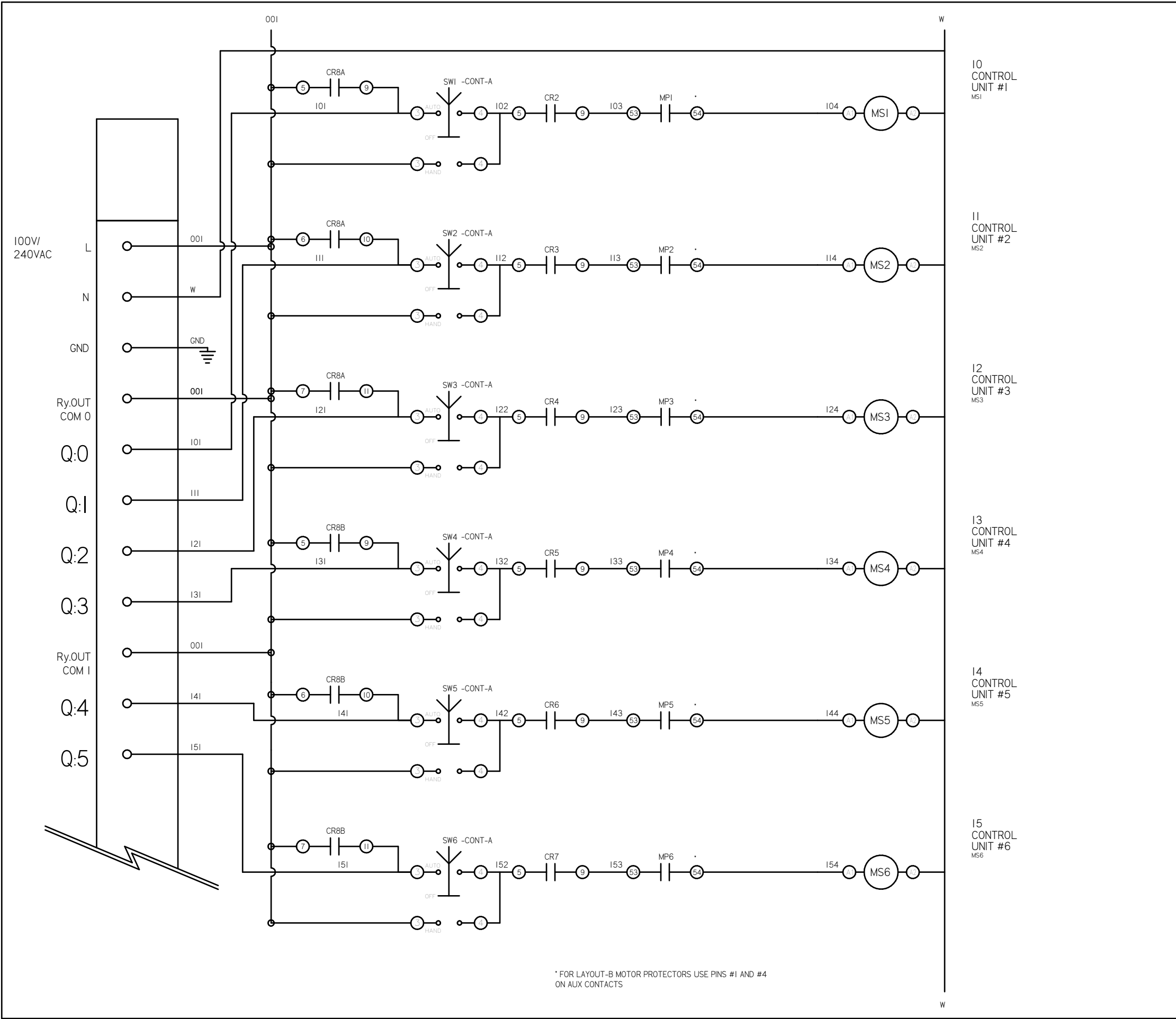
PANEL TYPE
HEX LAB COMP
HMI, NFPA

DWG. TYPE
WIRING

DWG. NO.
PXMI-LA616

SHEET W-2	SIZE B
--------------	-----------

REV	REVISION	DATE	ECN	NAME	CHKD
B-1	RELEASE TO PRODUCTION	10/16/15	22545	AJL	KMD
C	ADDED FAN WIRING	8/27/18	PXEC0165	AKH	KMD



* FOR LAYOUT-B MOTOR PROTECTORS USE PINS #1 AND #4 ON AUX CONTACTS

OPTIONAL:	SINGLE CYLINDER AND SCROLL PUMPS	<input checked="" type="checkbox"/>
	DOUBLE-CYLINDER PUMPS	<input type="checkbox"/>
BACNET, WEBSVR,	TRIPLE-CYLINDER PUMPS	<input type="checkbox"/>



CONFIDENTIAL DISCLOSURE:
This drawing is the property of the CAMPBELL GROUP of the SCOTT FETZER COMPANY and subject to return on demand. Its contents are confidential and must not be copied or submitted to outside parties for use or examination.

DRAWN BY	CHECKED BY	ENGINEERING APPROVAL
AJL	KMD	KMD
10/16/15	10/16/15	10/16/15

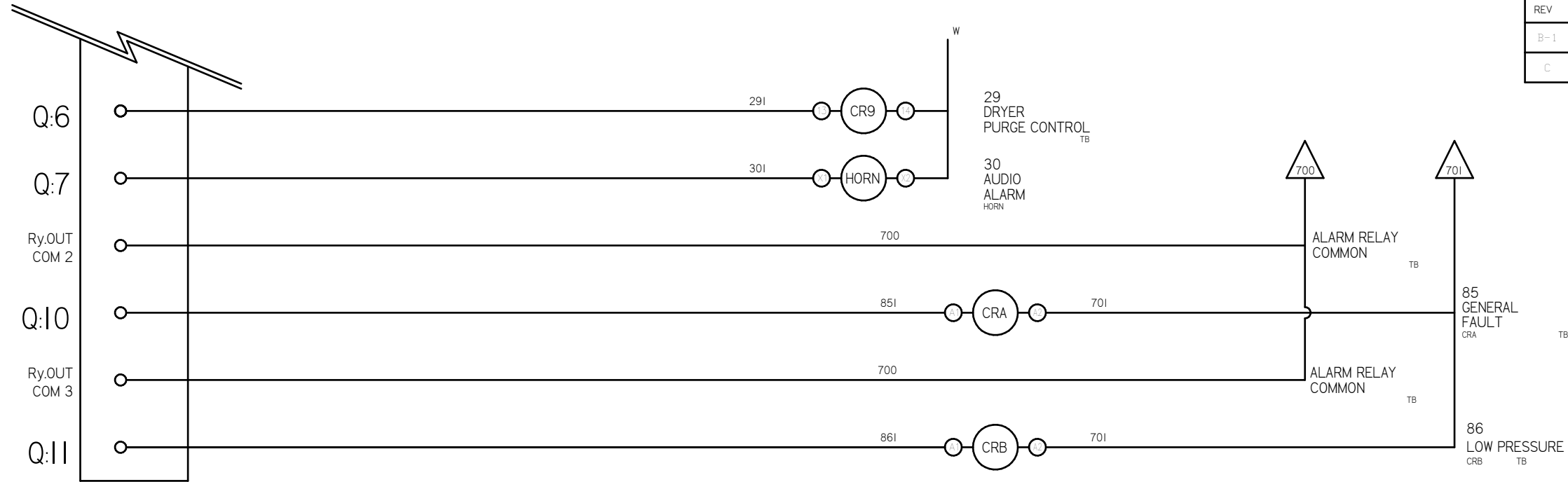
PANEL TYPE
HEX LAB COMP
HMI, NFPA

DWG. TYPE WIRING

DWG. NO. PXMI-LA616


SHEET	SIZE
W-3	B

REV	REVISION	DATE	ECN	NAME	CHKD
B-1	RELEASE TO PRODUCTION	09/05/11	22545	AJL	KMD
C	ADDED FAN WIRING	8/27/18	PXEC0169	AKH	KMD



OPTIONAL:

BACNET, WEBSVR,



CONFIDENTIAL DISCLOSURE:
This drawing is the property of the CAMPBELL GROUP of the SCOTT FETZER COMPANY and subject to return on demand. Its contents are confidential and must not be copied or submitted to outside parties for use or examination.

DRAWN BY	CHECKED BY	ENGINEERING APPROVAL
AJL	KMD	KMD
09/05/11	04/26/13	04/26/13

PANEL TYPE
HEX LAB COMP
HMI, NFPA

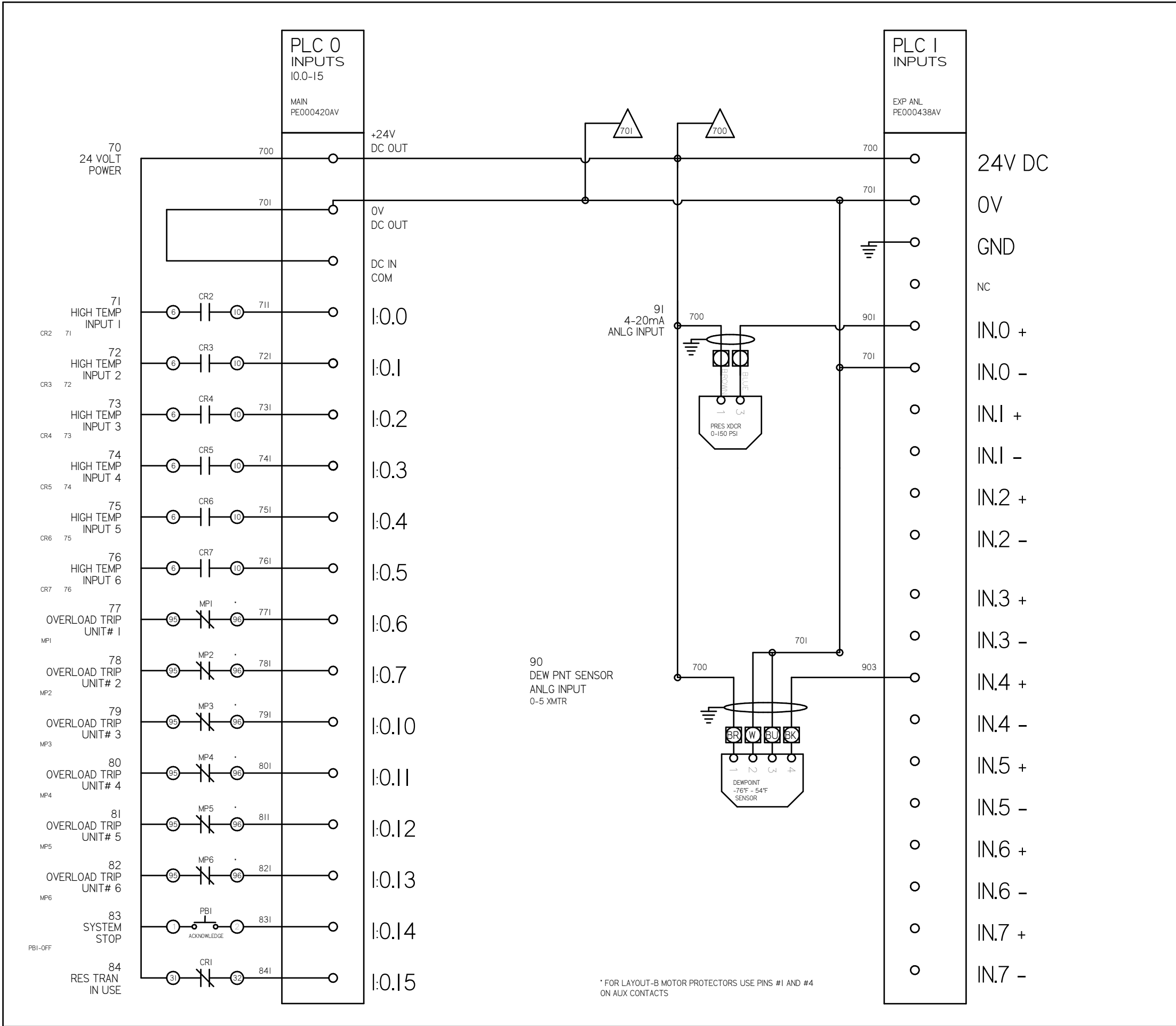
DWG. TYPE WIRING

DWG. NO.
PXMI-LA616

SHEET	SIZE
W-4	B

PXMI-LA616 B1

REV	REVISION	DATE	ECN	NAME	CHKD
B-1	RELEASE TO PRODUCTION	10/16/15	22545	AJL	KMD
C	ADDED FAN WIRING	8/27/18	PXEC0169	AKH	KMD



OPTIONAL:	SINGLE CYLINDER AND SCROLLPUMPS	<input checked="" type="checkbox"/>
	DOUBLE-CYLINDER PUMPS	<input type="checkbox"/>
	TRIPLE-CYLINDER PUMPS	<input type="checkbox"/>



CONFIDENTIAL DISCLOSURE
This drawing is the property of the CAMPBELL GROUP of the SCOTT FETZER COMPANY and subject to return on demand. Its contents are confidential and must not be copied or submitted to outside parties for use or examination.

DRAWN BY	CHECKED BY	ENGINEERING APPROVAL
AJL	KMD	KMD
10/16/15	10/16/15	10/16/15

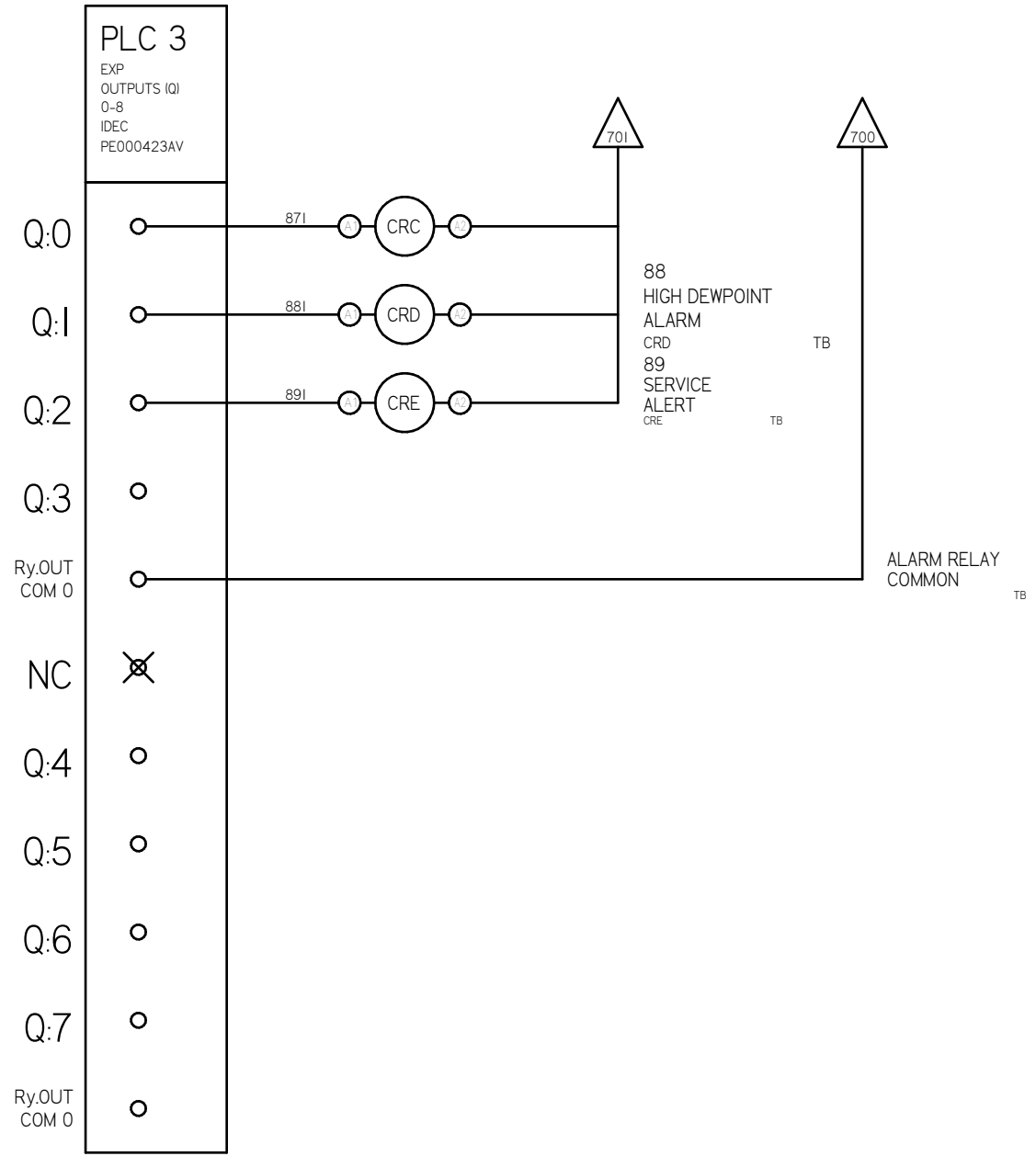
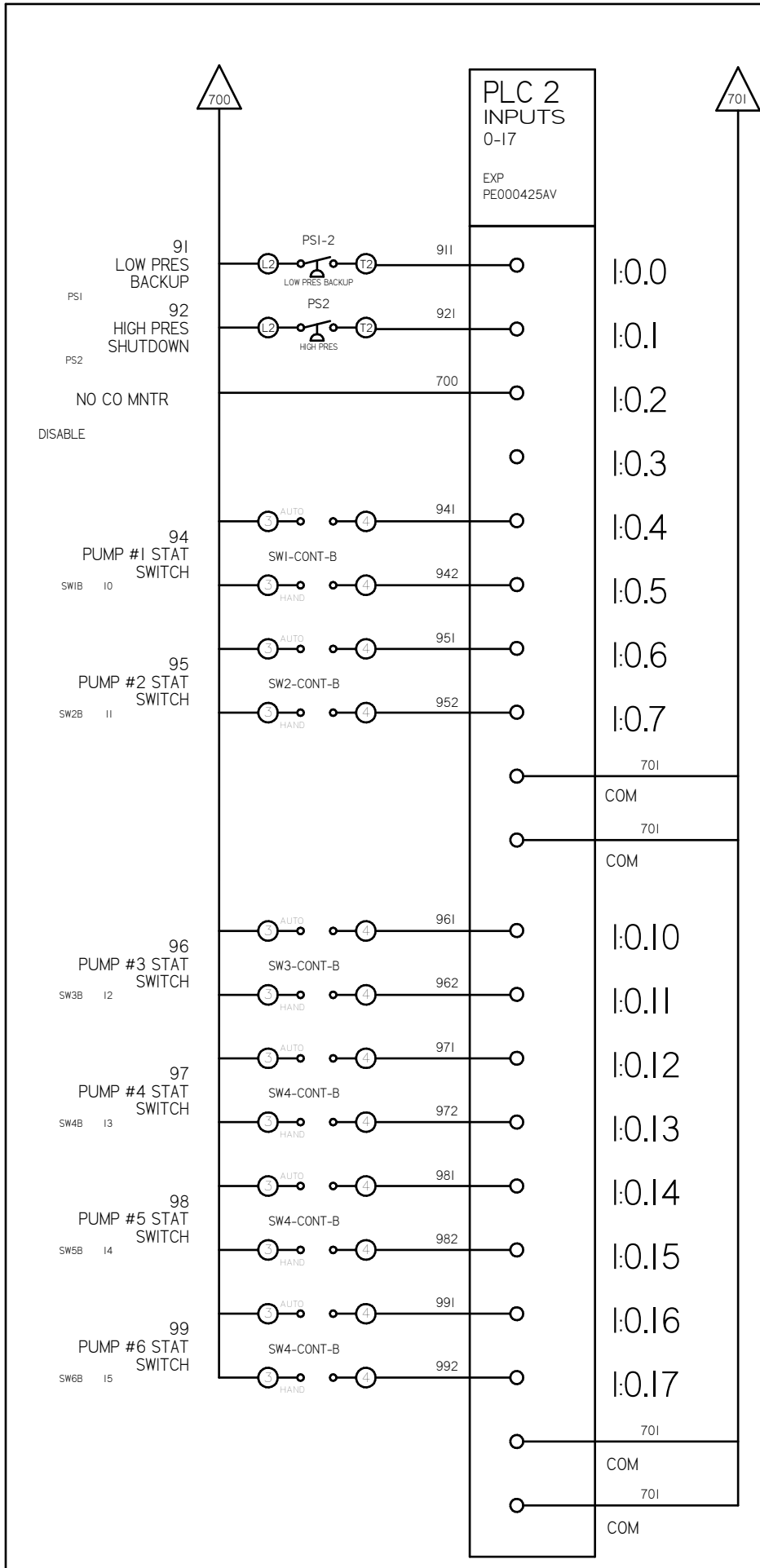
PANEL TYPE
HEX LAB COMP
HMI, NFPA

DWG. TYPE
WIRING

DWG. NO.
PXMI-LA616

SHEET W-5	SIZE B
--------------	-----------

REV	REVISION	DATE	ECN	NAME	CHKD
B-1	RELEASE TO PRODUCTION	10/16/15	22545	AJL	KMD
C	ADDED FAN WIRING	8/27/18	PXEC0165	AKH	KMD



OPTIONAL:

SINGLE CYLINDER AND SCROLLPUMPS	<input checked="" type="checkbox"/>
DOUBLE-CYLINDER PUMPS	<input type="checkbox"/>
BACNET, WEBSRVR, TRIPLE-CYLINDER PUMPS	<input type="checkbox"/>



CONFIDENTIAL DISCLOSURE:
This drawing is the property of the CAMPBELL GROUP of the SCOTT FETZER COMPANY and subject to return on demand. Its contents are confidential and must not be copied or submitted to outside parties for use or examination.

DRAWN BY	CHECKED BY	ENGINEERING APPROVAL
AJL	KMD	KMD
10/16/15	10/16/15	10/16/15

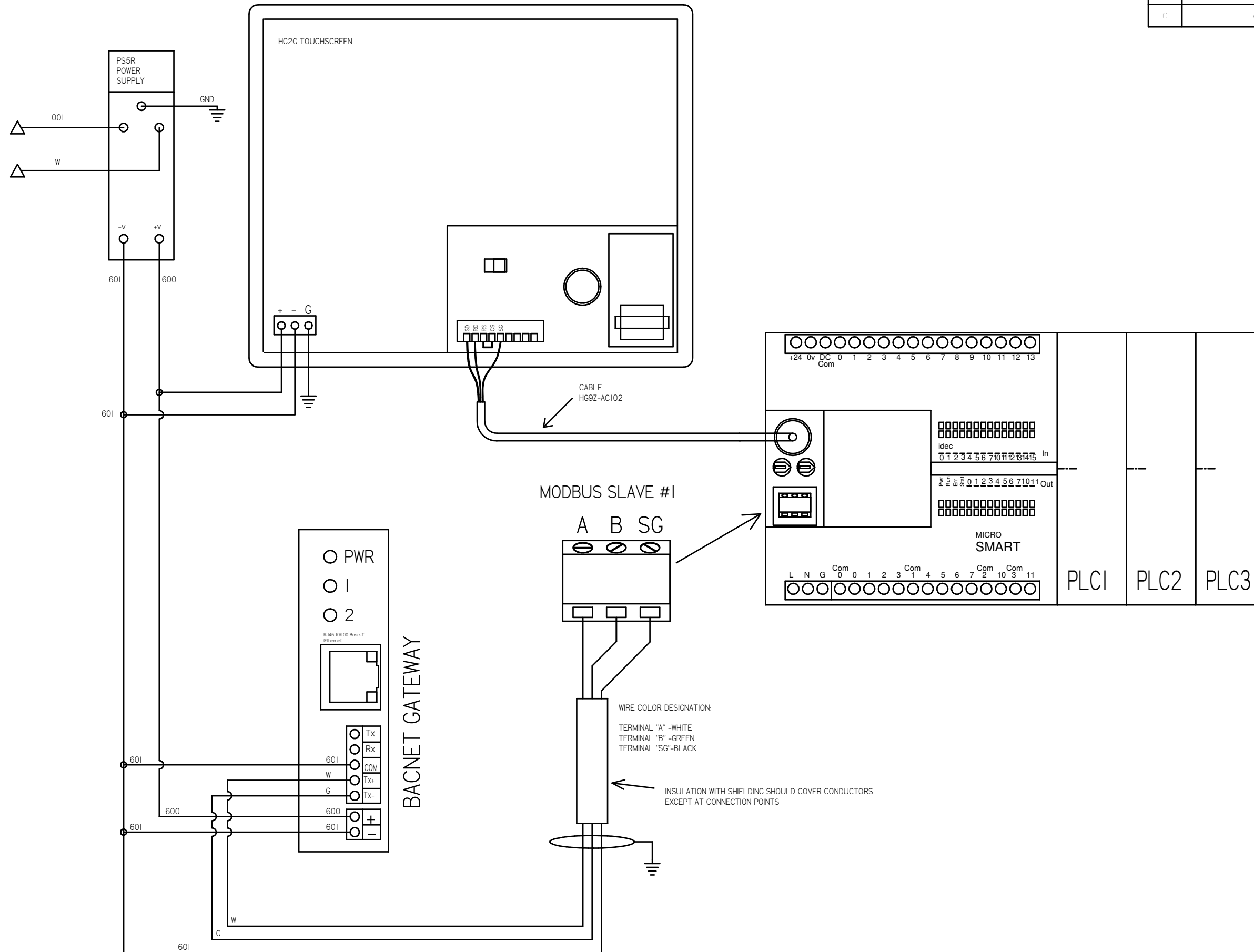
PANEL TYPE
HEX LAB COMP
HMI, NFPA

DWG. TYPE
WIRING

DWG. NO.
PXMI-LA616

SHEET	SIZE
W-6	B

REV	REVISION	DATE	ECN	NAME	CHKD
B-1	RELEASE TO PRODUCTION	10/16/15	22545	AJL	KMD
C	ADDED FAN WIRING	8/27/18	PXEC0165	AKH	KMD



OPTIONAL:

SINGLE CYLINDER AND SCROLLPUMPS	<input checked="" type="checkbox"/>
DOUBLE-CYLINDER PUMPS	<input type="checkbox"/>
TRIPLE-CYLINDER PUMPS	<input type="checkbox"/>



CONFIDENTIAL DISCLOSURE
 This drawing is the property of the CAMPBELL GROUP of the SCOTT FETZER COMPANY and subject to return on demand. Its contents are confidential and must not be copied or submitted to outside parties for use or examination.

DRAWN BY	CHECKED BY	ENGINEERING APPROVAL
AJL	KMD	KMD
10/16/15	10/16/15	10/16/15

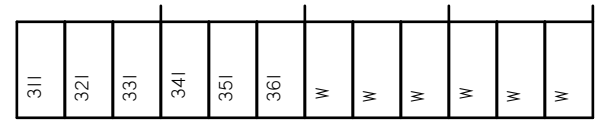
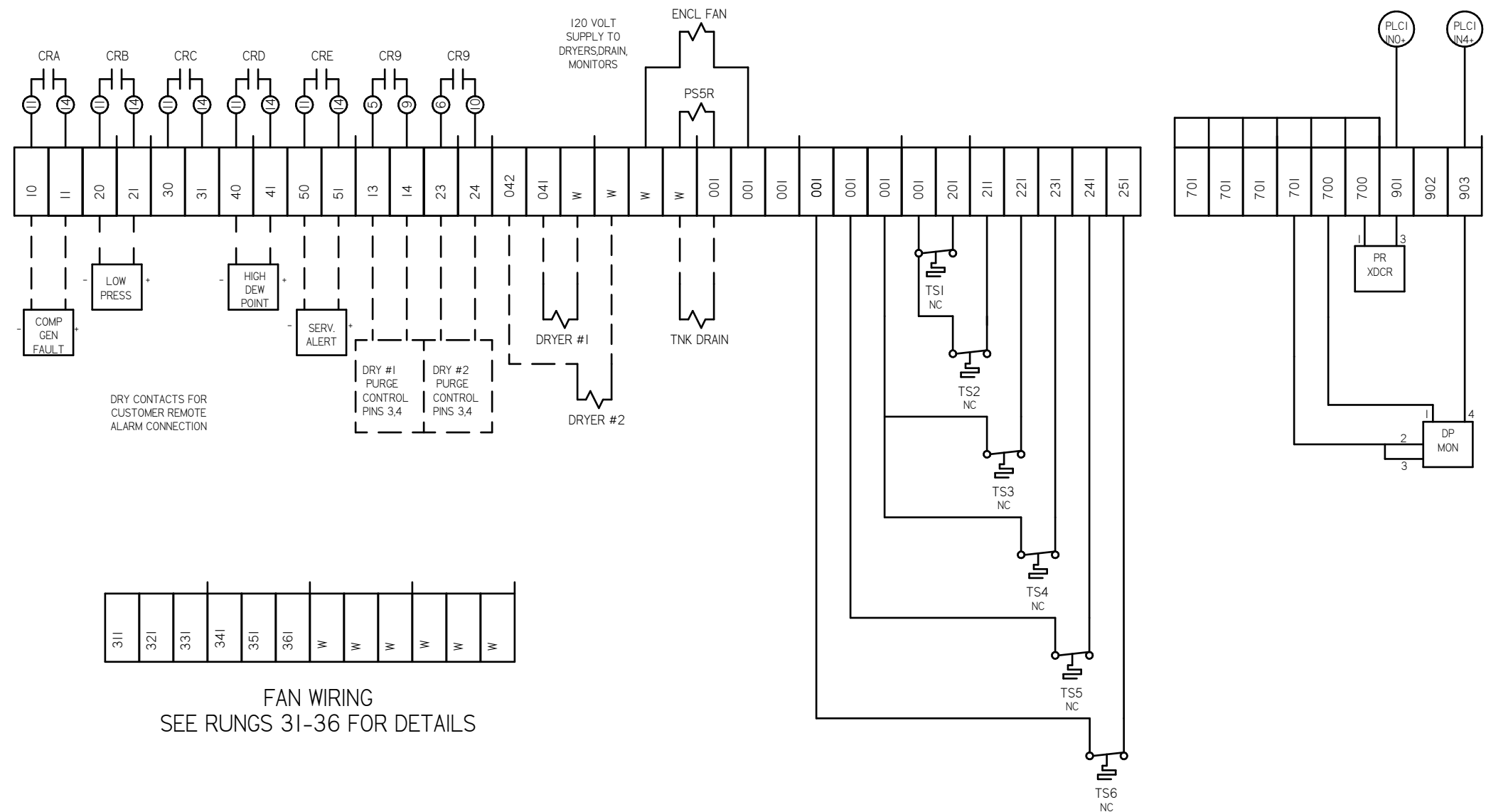
PANEL TYPE
 HEX LAB COMP
 HMI, NFPA

DWG. TYPE
 WIRING

DWG. NO.
 PXMI-LA616

SHEET	SIZE
W-7	B

REV	REVISION	DATE	ECN	NAME	CHKD
B-1	RELEASE TO PRODUCTION	10/16/15	22545	AJL	DMS
C	ADDED FAN WIRING	8/27/18	PXEC0169	AKH	KMD



- FIELD WIRING NOTES:
1. PANEL GROUND MUST BE CONNECTED TO EARTH GROUND.
 2. TRANSFORMER IS SIZED FOR LOADS SHOWN ON DRAWING ONLY.
 3. FIELD WIRING INDICATED BY -----. WIRE TO BE COPPER RATED AT 75° C.
 4. ALL ALARM DRY CONTACTS ARE CLOSED FOR NORMAL OPERATION AND OPEN IN ALARM.
 5. DRY CONTACT RATING: 30V DC/2A (resistive load, inductive load L/R = 7 ms)
 6. USE CAT-5 CABLE W/RJ45 CONNECTOR FOR ETHERNET CONNECTION TO COMMUNICATION NETWORK OR BAS SYSTEM

OPTIONAL:

SINGLE CYLINDER AND SCROLLPUMPS	<input checked="" type="checkbox"/>
DOUBLE-CYLINDER PUMPS	<input type="checkbox"/>
TRIPLE-CYLINDER PUMPS	<input type="checkbox"/>

BACNET, WEBSVR,



CONFIDENTIAL DISCLOSURE:
This drawing is the property of the CAMPBELL GROUP of the SCOTT FETZER COMPANY and subject to return on demand. Its contents are confidential and must not be copied or submitted to outside parties for use or examination.

DRAWN BY	CHECKED BY	ENGINEERING APPROVAL
AJL	DMS	DMS
10/16/15	10/16/15	10/16/15

PANEL TYPE
HEX LAB COMP
HMI, NFPA

DWG. TYPE WIRING

DWG. NO. PXMI-LA616

SHEET W-8 SIZE B

REV	REVISION	DATE	ECN	NAME	CHKD
B-1	RELEASE TO PRODUCTION	10/16/15	22545	AJL	KMD
C	ADDED FAN WIRING	8/27/18	PXEC0169	AKH	KMD

- NOTES:
- RECOMMENDED TIGHTENING TORQUES FOR WIRE TERMINALS:
208-575 VOLT POWER 35 POUND INCHES
120 VOLT POWER AND CONTROL VOLTAGE 15 POUND INCHES
 - PANEL GROUND MUST BE CONNECTED TO EARTH GROUND
 - INSTALLER TO PROVIDE MAIN DISCONNECTING DEVICE WITH SHORT CIRCUIT PROTECTION FOR THIS ELECTRICAL ASSEMBLY. SEE TABLE I.
 - ALL WIRES MUST BE LABELED ON BOTH ENDS
 - TRANSFORMER IS SIZED FOR LOADS SHOWN ON DRAWING ONLY. DO NOT CONNECT ANY OTHER DEVICES
 - △ INDICATES A DRAWING WIRE CONNECTION TO ANOTHER PAGE.
- FIELD WIRING NOTES ON PAGE W-8.

TABL-1	P/N	MOTOR FULL LOAD AMPS	TOTAL FULL LOAD AMPS	NON-TIME DELAY FUSE	TIME DELAY FUSE	INVERSE-TIME CIRCUIT BREAKER
208V (3Ø)	02AJ	4.1	26.6	35	30	35
	12AJ	4.5	29	40	35	40
	22AJ	6	38	50	45	50
	32AJ	8.5	53	70	60	70
	52AJ	14	86	125	100	110
	72AJ	20.5	125	175	150	175
	A2AJ *	27.4	166.4	225	200	225
	F2AJ *	41.1	248.6	350	300	350
230V (3Ø)	03AJ	3.6	23.6	35	30	30
	13AJ	4.4	28.4	40	35	40
	23AJ	5.8	36.8	50	45	50
	33AJ	7.7	48.2	70	60	70
	53AJ	12.7	78.2	110	90	100
	73AJ	18.5	113	150	150	150
	A3AJ	24.8	150.8	225	175	200
	F3AJ *	37.2	225.2	300	300	300
460V (3Ø)	04AJ	1.8	12.8	20	15	20
	14AJ	2.2	15.2	20	20	20
	24AJ	2.9	19.4	30	25	25
	34AJ	3.9	25.4	35	30	35
	54AJ	6.3	39.8	60	45	50
	74AJ	9.3	57.8	80	70	80
	A4AJ	12.4	76.4	110	90	100
	F4AJ	18.6	113.6	175	150	150
380V (3Ø) 50HZ	08AJ					
	18AJ					
	28AJ	3.4	22.4	30	25	30
	38AJ	4.6	29.6	40	35	40
	58AJ	7.7	48.2	70	60	70
	78AJ	11.1	68.6	100	80	90
	A8AJ	14.9	91.4	125	110	125
F8AJ	22.1	134.6	200	175	175	
575V (3Ø)	07AJ	1.1	8.6	15	10	15
	17AJ					
	27AJ	2.3	15.8	25	20	20
	37AJ	3.1	20.6	30	25	30
	57AJ	5.1	32.6	45	40	45
	77AJ	6.9	43.4	60	50	60
	A7AJ	9.9	61.4	90	70	80
F7AJ	14.9	91.4	125	125	125	

VOLTAGE	WIRE NUMBERS	GAUGE	COLOR
120 VAC	01-699	16-18 AWG	RED/BLK
0VAC	W	16-18 AWG	WHT/BLK
24VDC	700-799	16-18 AWG	PURPLE
0VDC	701	16-18 AWG	PURPLE
GND	-	VARIES	GREEN
CUSTOMER SUPPLY	01-99	16 AWG	YELLOW

FUSE TYPE	208 VOLT	230 VOLT	460 VOLT	575 VOLT
FUI,2A FUI,2B	FNQR 6A	5A	5A	4A
FU3AB	FNM 7A	7A	7A	7A

OPTIONAL:



CONFIDENTIAL DISCLOSURE:
This drawing is the property of the CAMPBELL GROUP of the SCOTT FETZER COMPANY and subject to return on demand. Its contents are confidential and must not be copied or submitted to outside parties for use or examination.

DRAWN BY	CHECKED BY	ENGINEERING APPROVAL
AJL	KMD	KMD
10/16/15	10/16/15	10/16/15

PANEL TYPE
HEX LAB COMP
HMI, NFPA

DWG. TYPE
DATA

DWG. NO.
PXMI-LA616

SHEET
D-1

SIZE
B

SEQUENCE OF OPERATIONS

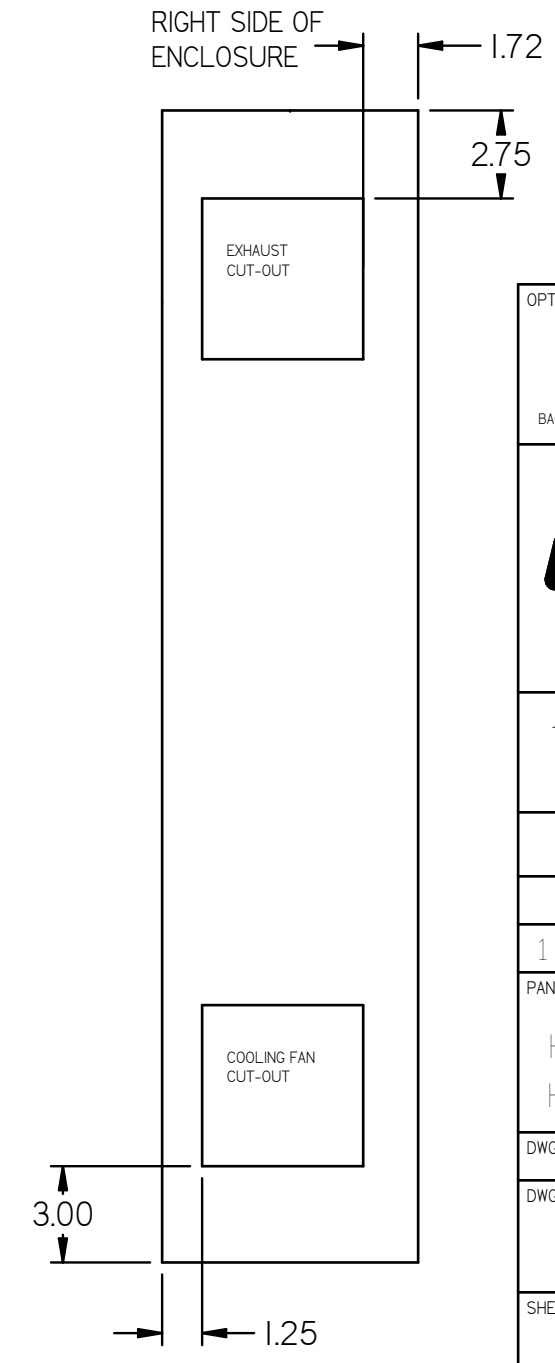
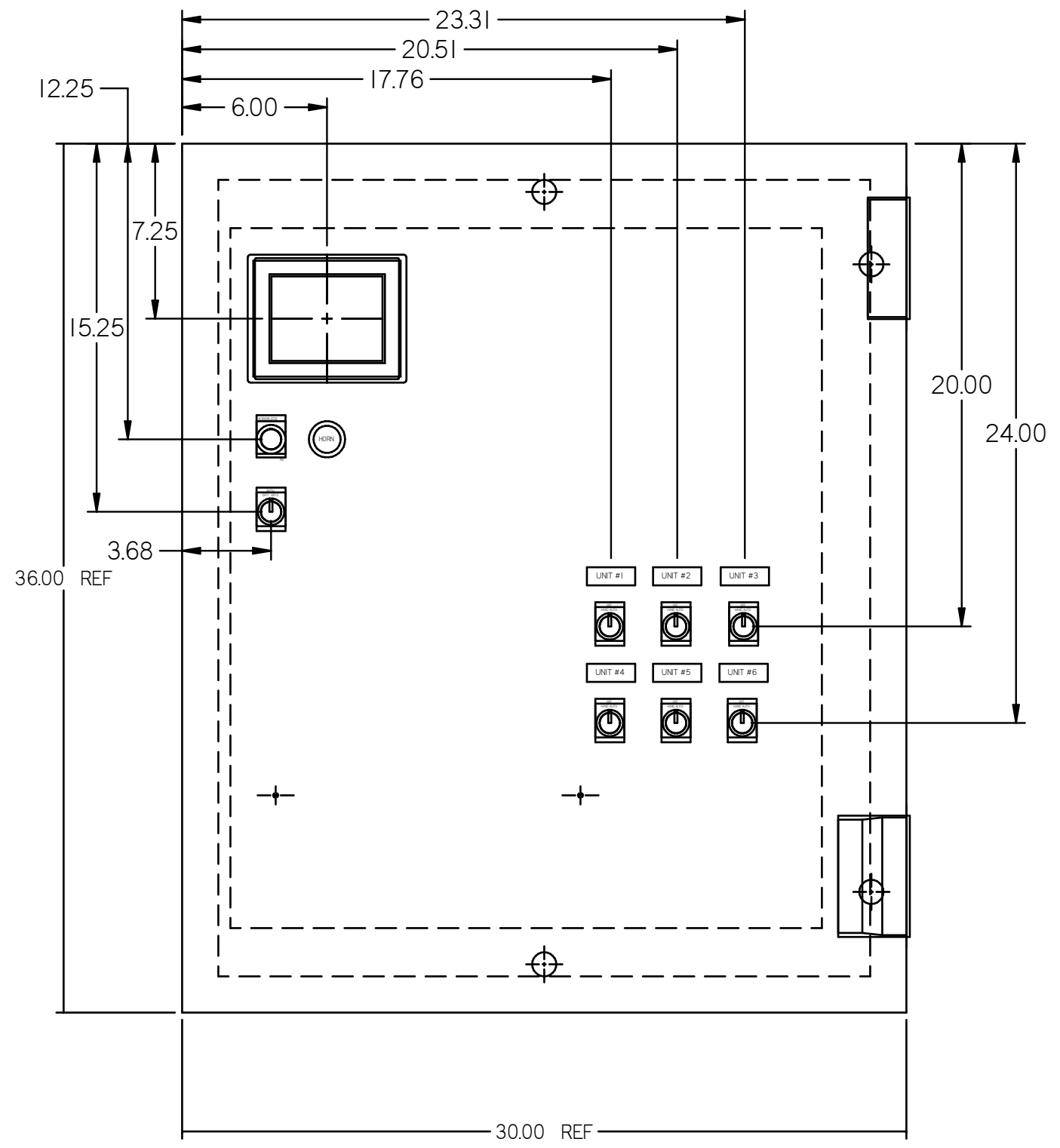
During normal operation the PBMI controller will signal the Lead compressor to run when pressure drops below lead cut-in set-point and stop when the pressure reaches the lead cut-out set-point. Lead alternation to the next pump, will occur with each lead run signal or every 10-minutes (which ever happens first). If demand cannot be satisfied by the lead pump, the lag pump(s) will start and stop based upon the lag cut-in and cut-out set-points. When more than one pump is running, lead alternation will occur when the lowest cut-out set-point is satisfied, or after 10-minutes (which ever happens first). The HOA switch's place the pump in the following modes: Hand-turns pump on to run continuous. Off-disables pump from running. Auto-places pump in the "ready mode" and will start and stop based on sequence described above.

All plex configurations include a hardwired Back-up pressure switch circuit should a control failure occur. This circuit will call all pumps on and off based on the reserve pressure switch set-points.

Expandable systems include all control devices, operators, and programming for the maximum number of pumps (or plex) required. To expand the system: navigate to the "service screen" and enter the number of pumps.

Additional information and descriptions can be accessed through the HMI "service info" screen by pressing Sequence of Operations button.

REV	REVISION	DATE	ECN	NAME	CHKD
B-1	RELEASE TO PRODUCTION	10/16/15	22545	CHR	KMD
C	ADDED FAN WIRING	8/27/18	PXEC0165	AKH	KMD



- OPTIONAL:
- SINGLE CYLINDER AND SCROLLPUMPS
 - DOUBLE-CYLINDER PUMPS
 - BACNET, WEBSVR, TRIPLE-CYLINDER PUMPS



CONFIDENTIAL DISCLOSURE:
This drawing is the property of the CAMPBELL GROUP of the SCOTT FETZER COMPANY and subject to return on demand. Its contents are confidential and must not be copied or submitted to outside parties for use or examination.

DRAWN BY	CHECKED BY	ENGINEERING APPROVAL
CHR	KMD	KMD
10/16/15	10/16/15	10/16/15

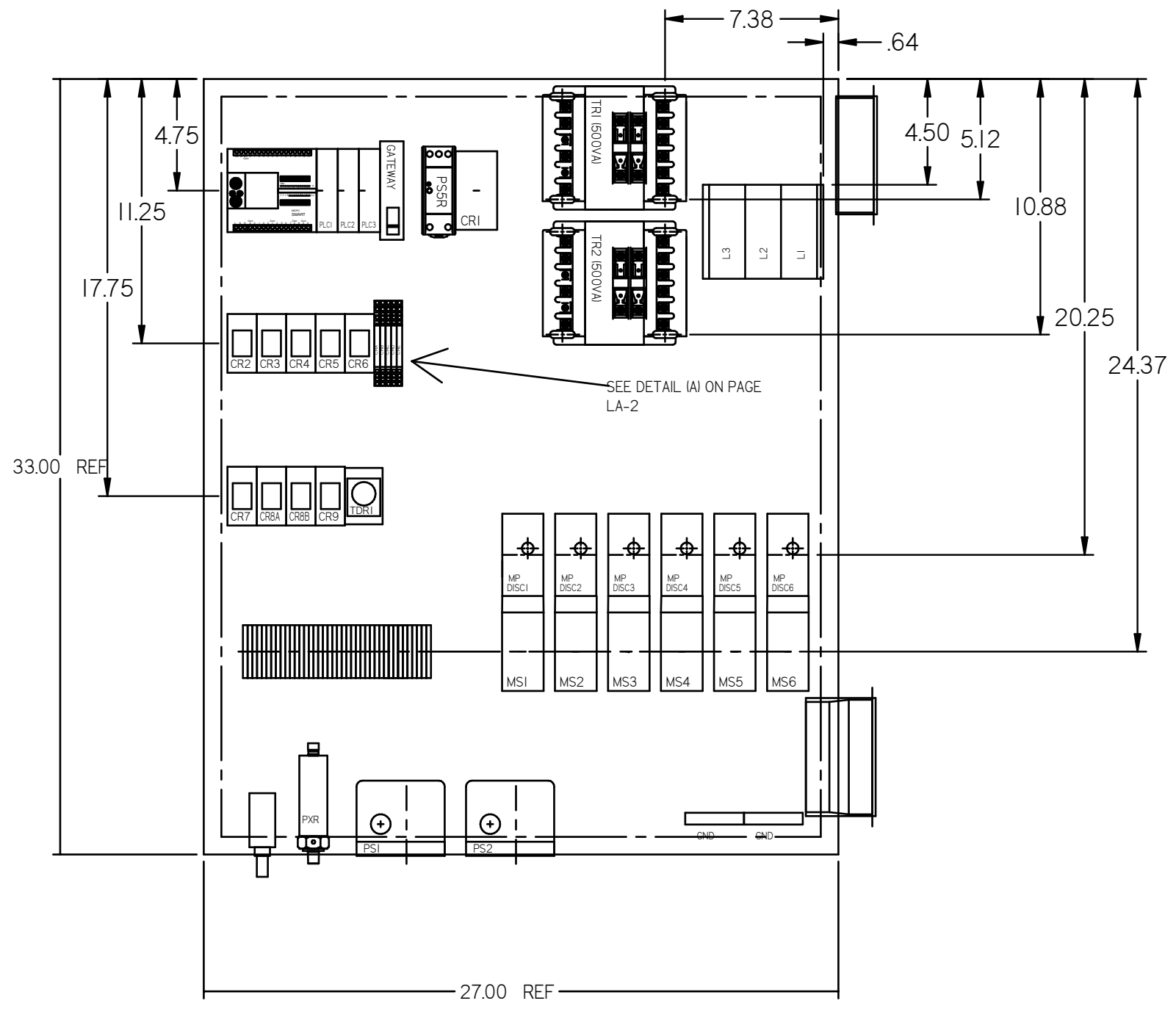
PANEL TYPE
HEX LAB COMP
HMI, NFPA

DWG. TYPE LAYOUT A

DWG. NO.
PXMI-LA616

SHEET	SIZE
LA-1	B

REV	REVISION	DATE	ECN	NAME	CHKD
B-1	RELEASE TO PRODUCTION	10/16/15	22545	AJL	KMD
C	ADDED FAN WIRING	8/27/18	PXEC0165	AKH	KMD



	<input type="checkbox"/>	<input type="checkbox"/>	<input type="checkbox"/>	<input type="checkbox"/>	<input type="checkbox"/>	<input type="checkbox"/>
	<input type="checkbox"/>	<input type="checkbox"/>	<input type="checkbox"/>	<input type="checkbox"/>	<input type="checkbox"/>	<input type="checkbox"/>
CRA	<input type="checkbox"/>	<input type="checkbox"/>	<input type="checkbox"/>	<input type="checkbox"/>	<input type="checkbox"/>	<input type="checkbox"/>
CRB	<input type="checkbox"/>	<input type="checkbox"/>	<input type="checkbox"/>	<input type="checkbox"/>	<input type="checkbox"/>	<input type="checkbox"/>
CRC	<input type="checkbox"/>	<input type="checkbox"/>	<input type="checkbox"/>	<input type="checkbox"/>	<input type="checkbox"/>	<input type="checkbox"/>
CRD	<input type="checkbox"/>	<input type="checkbox"/>	<input type="checkbox"/>	<input type="checkbox"/>	<input type="checkbox"/>	<input type="checkbox"/>
CRE	<input type="checkbox"/>	<input type="checkbox"/>	<input type="checkbox"/>	<input type="checkbox"/>	<input type="checkbox"/>	<input type="checkbox"/>

OPTIONAL:

SINGLE CYLINDER AND SCROLL PUMPS	<input checked="" type="checkbox"/>
DOUBLE-CYLINDER PUMPS	<input type="checkbox"/>
BACNET, WEBSVR, TRIPLE-CYLINDER PUMPS	<input type="checkbox"/>



CONFIDENTIAL DISCLOSURE:
This drawing is the property of the CAMPBELL GROUP of the SCOTT FETZER COMPANY and subject to return on demand. Its contents are confidential and must not be copied or submitted to outside parties for use or examination.

DRAWN BY	CHECKED BY	ENGINEERING APPROVAL
AJL	KMD	KMD
10/16/15	10/16/15	10/16/15

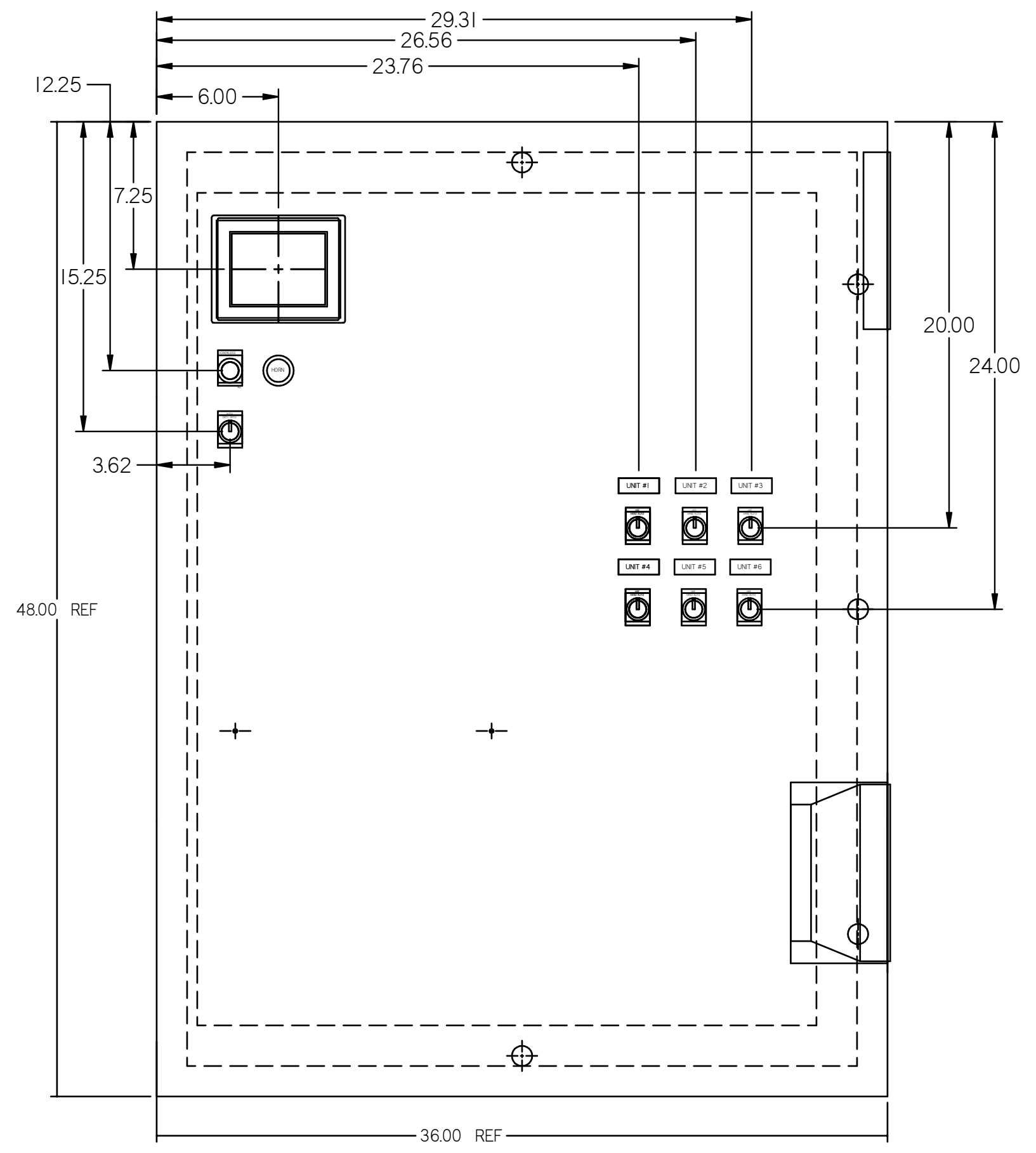
PANEL TYPE
HEX LAB COMP
HMI, NFPA

DWG. TYPE LAYOUT A

DWG. NO.
PXMI-LA616


SHEET LA-2	SIZE B
---------------	-----------

REV	REVISION	DATE	ECN	NAME	CHKD
B-1	RELEASE TO PRODUCTION	10/16/15	22545	AJL	KMD
C	ADDED FAN WIRING	8/27/18	PXEC0165	AKH	KMD



OPTIONAL:

BACNET, WEBSVR,



CONFIDENTIAL DISCLOSURE:
This drawing is the property of the CAMPBELL GROUP of the SCOTT FETZER COMPANY and subject to return on demand. Its contents are confidential and must not be copied or submitted to outside parties for use or examination.

DRAWN BY	CHECKED BY	ENGINEERING APPROVAL
AJL	KMD	KMD
10/16/15	10/16/15	10/16/15

PANEL TYPE
HEX LAB COMP
HMI, NFPA

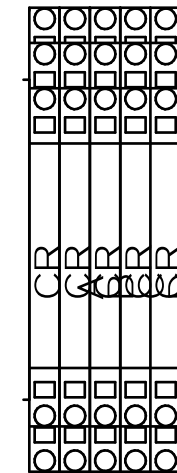
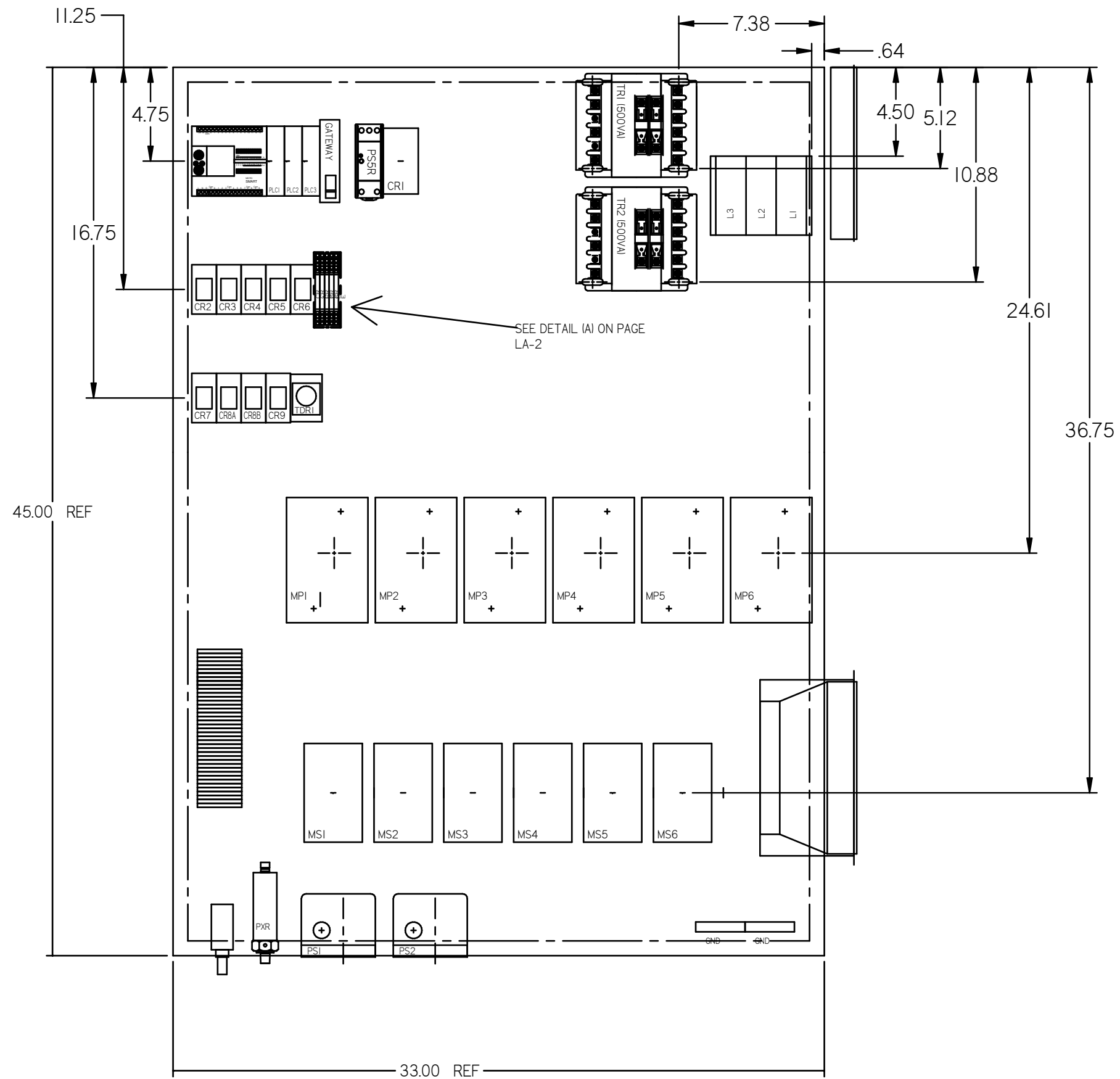
DWG. TYPE LAYOUT B

DWG. NO. PXMI-LA616

SHEET	SIZE
LB-1	B

PXMI-LA616 B1

REV	REVISION	DATE	ECN	NAME	CHKD
B-1	RELEASE TO PRODUCTION	10/16/15	22545	AJL	KMD
C	ADDED FAN WIRING	8/27/18	PXEC0169	AKH	KMD



OPTIONAL:

BACNET, WEBSVR.



CONFIDENTIAL DISCLOSURE:
This drawing is the property of the CAMPBELL GROUP of the SCOTT FETZER COMPANY and subject to return on demand. Its contents are confidential and must not be copied or submitted to outside parties for use or examination.

DRAWN BY	CHECKED BY	ENGINEERING APPROVAL
AJL	KMD	KMD
10/16/15	10/16/15	10/16/15

PANEL TYPE

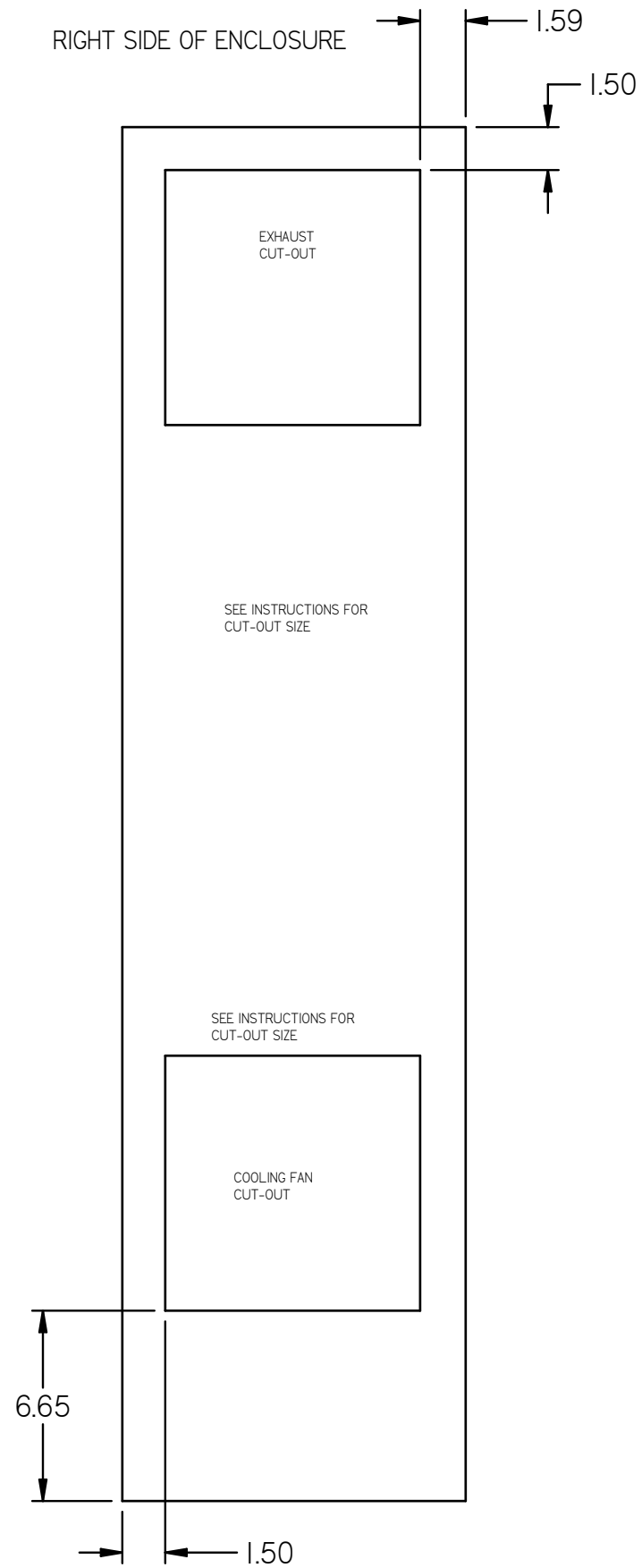
HEX LAB COMP
HMI, NFPA

DWG. TYPE LAYOUT B

DWG. NO.
PXMI-LA616

SHEET	SIZE
LB-2	B

REV	REVISION	DATE	ECN	NAME	CHKD
B-1	RELEASE TO PRODUCTION	10/16/15	22545	AJL	KMD
C	ADDED FAN WIRING	8/27/18	PXEC0169	AKH	KMD



OPTIONAL:

BACNET, WEBSVR,



CONFIDENTIAL DISCLOSURE
 This drawing is the property of the CAMPBELL GROUP of the SCOTT FETZER COMPANY and subject to return on demand. Its contents are confidential and must not be copied or submitted to outside parties for use or examination.

DRAWN BY	CHECKED BY	ENGINEERING APPROVAL
AJL	KMD	KMD
10/16/15	10/16/15	10/16/15

PANEL TYPE

HEX LAB COMP
 HMI, NFPA

DWG. TYPE LAYOUT B

DWG. NO. PXMI-LA616

SHEET	SIZE
LB-3	B