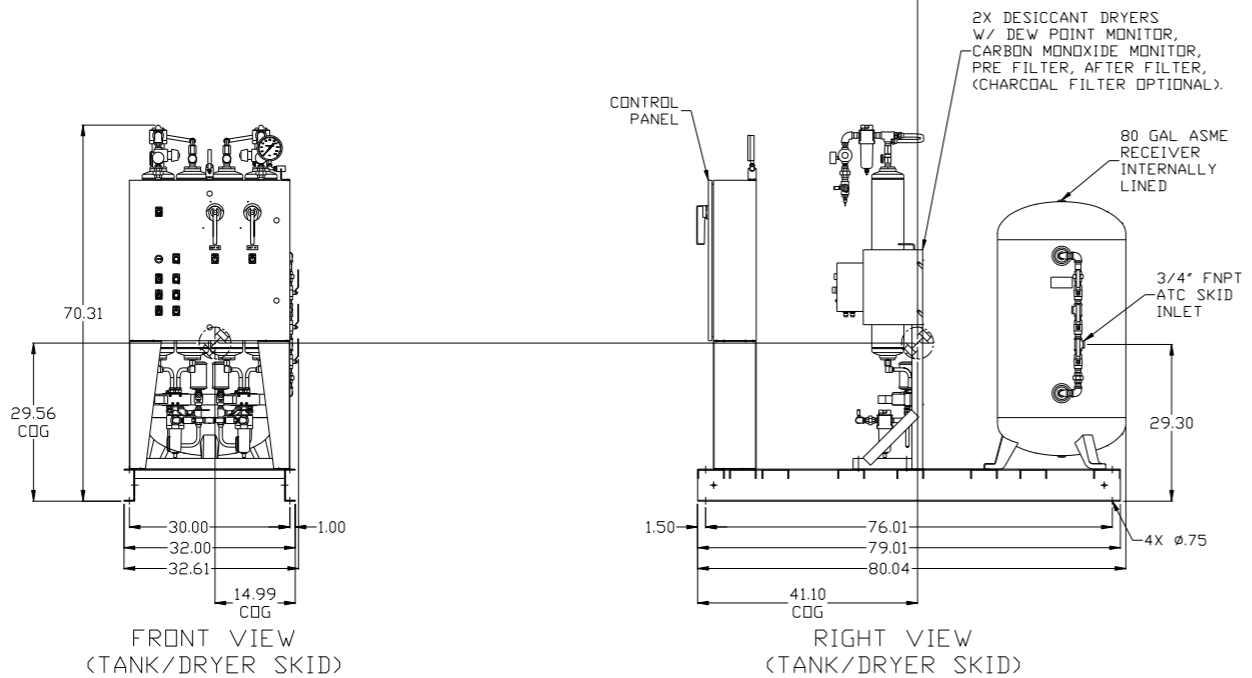
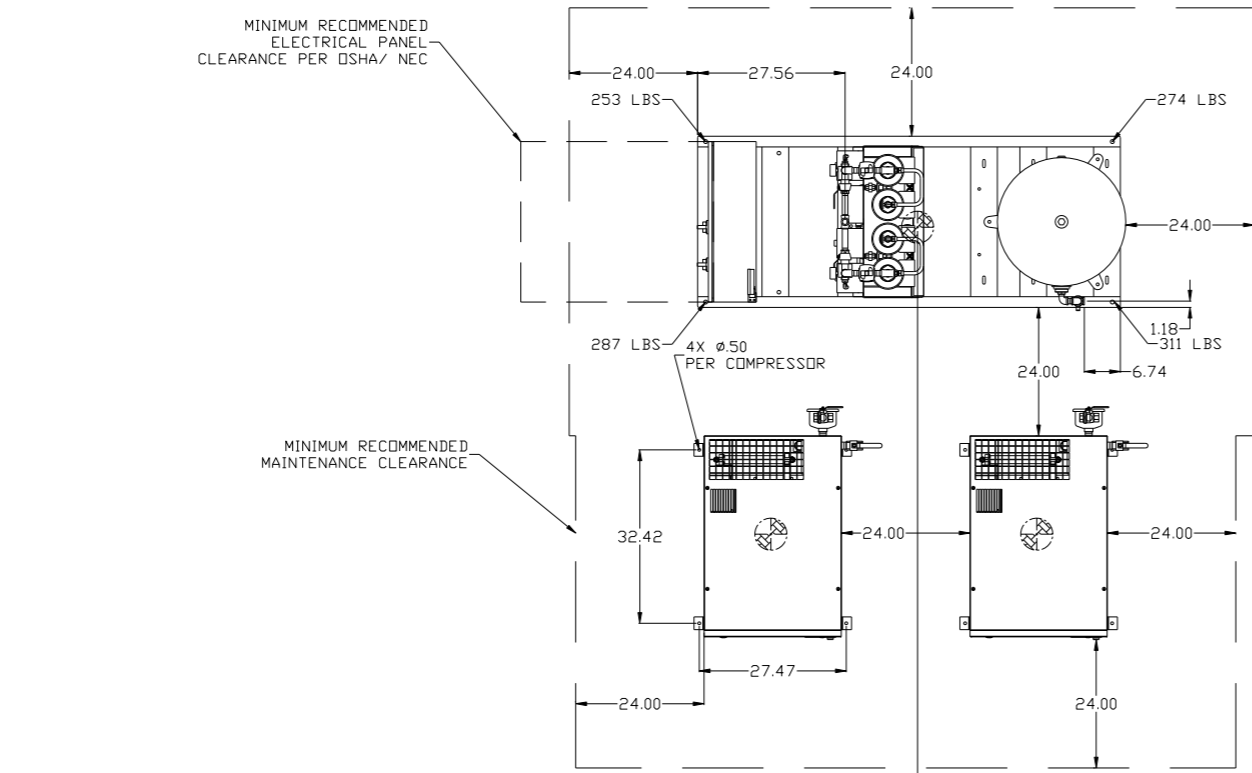


REV	ZONE	REVISION	DATE	ECN	NAME	CHKD
B-1	ALL	RELEASE TO PRODUCTION	9/24/07	21668	AEK	GES
C-1	ALL	UPDATED BUILD & FLOW TO CURRENT STANDARD	6/3/08	21907	AEK	GES
C-2	ALL	CORRECTED AIR INLET ORIENTATION PLUMBING	10/23/08	21907	AEK	GES
D-1	ALL	UPDATED TO NEW POWEREX DRYER	8/19/09	22120	AEK	GES
E-1	ALL	REMOTE INLET CHANGED TO 1 INCH	02/05/10	22348	DMS	GES
F-1	1 ALL	UPDATED TO NEW ENCLOSURE DESIGN	6/18/10	22394	AEK	GES
G-1	2 ALL	UPDATED/ADDED FLEX LINES	10/23/12	PXEC0009	AEK	KMB
H-1	1 ALL 1 ALL 2 CS 1 ALL	ADDED CENTER OF GRAVITY INFORMATION UPDATED TO CURRENT MASTER CONTROL PANEL ADDED RESERVE PRESSURE SWITCH ADDED ATC SKID INLET LOCATION	9/24/13	PXEC0030	AEK	GES
J-1	ALL	ADDED TANK LINING	4/2/18	PXEC0229	GES	MAH

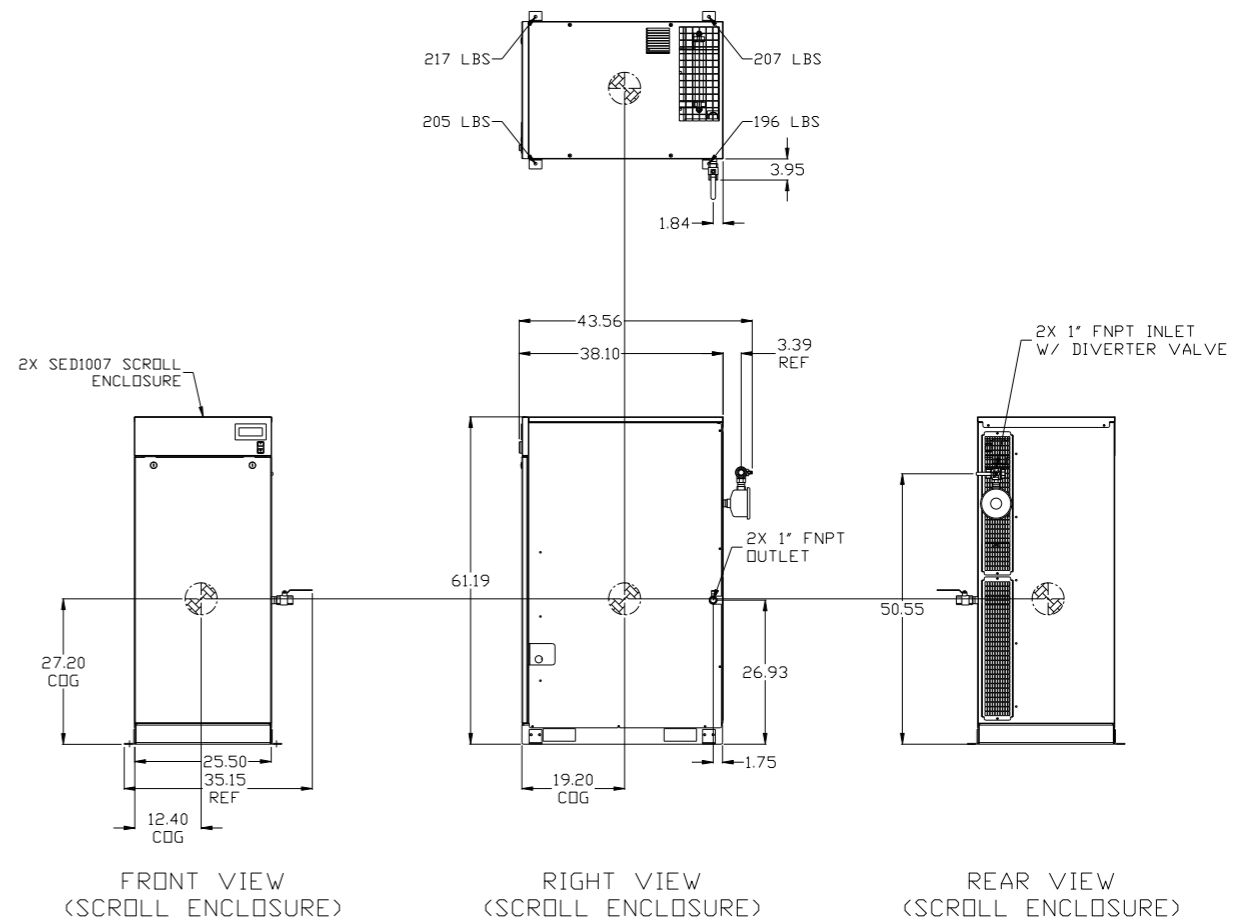
MINIMUM RECOMMENDED ELECTRICAL PANEL CLEARANCE PER OSHA/ NEC

MINIMUM RECOMMENDED MAINTENANCE CLEARANCE



FRONT VIEW (TANK/DRYER SKID)

RIGHT VIEW (TANK/DRYER SKID)



FRONT VIEW (SCROLL ENCLOSURE)

RIGHT VIEW (SCROLL ENCLOSURE)

REAR VIEW (SCROLL ENCLOSURE)

SED1007 SCROLL ENCLOSURE:
TOTAL WEIGHT: 825 LBS

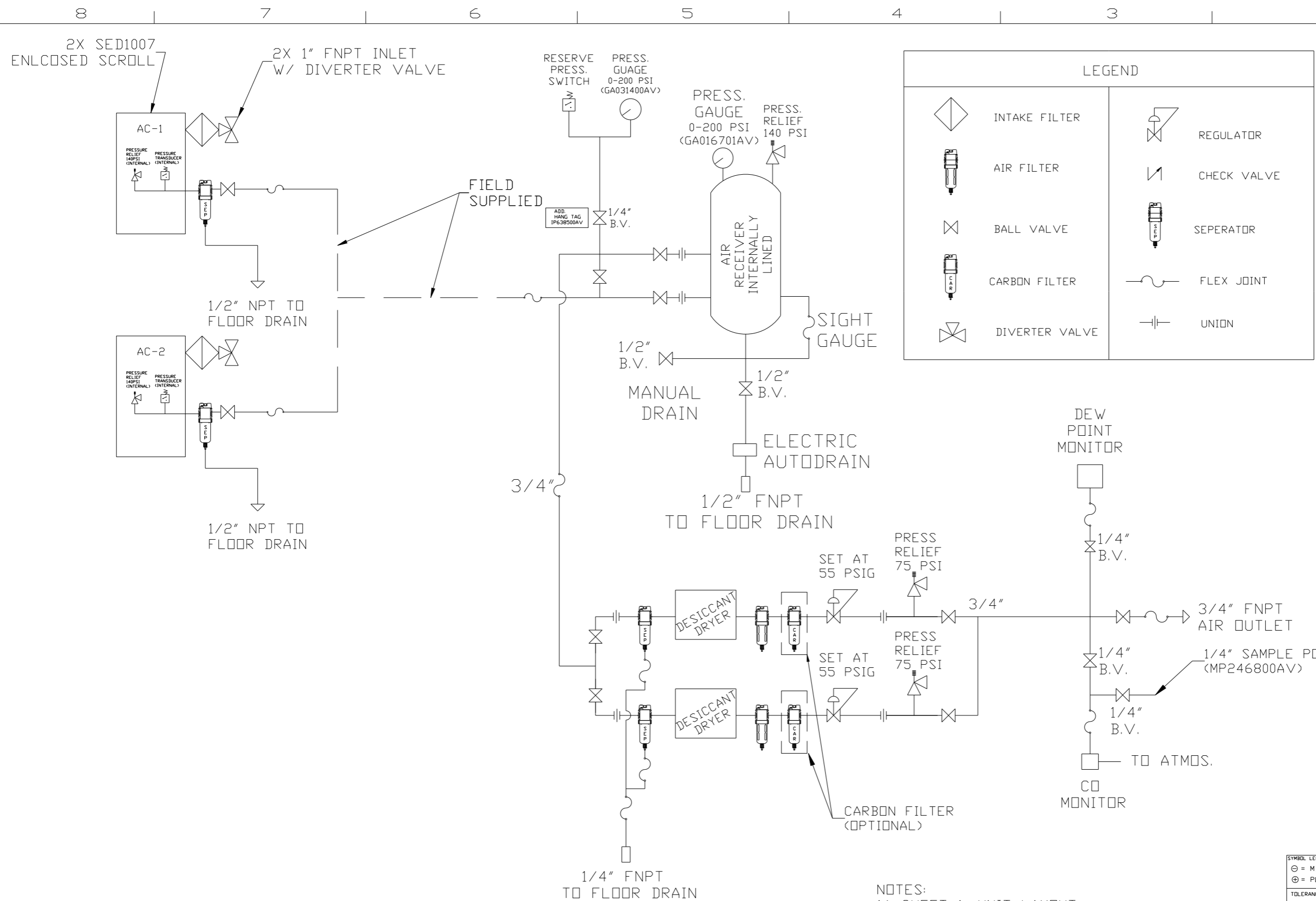
AIR TREATMENT SKID:
TOTAL WEIGHT: 1125 LBS

DENOTES CENTER OF GRAVITY

NOTES:

- 1.) SHEET 1, UNIT LAYOUT.
- 2.) SHEET 2, UNIT FLOW SCHEMATIC.
- 3.) INLET CONNECTIONS: 1" FNPT X 2.
- 4.) OUTLET CONNECTION: 3/4" FNPT X 1.
- 5.) POWER CONNECTION: 1- 208, 230, OR 460 VOLT
- 6.) WHEN PACKAGE IS INSTALLED INTO THE FACILITY, MAKE SURE THAT THE INSTALLER REFERENCES TABLE 110.26 (A) (1) FOR MINIMUM WORKING AREA.

SYMBOL LEGEND		= ADDITIONAL CONTROL REQ'D		Drawings to conform to the current revision of the following ANSI standards:	
⊖	MINUS DRAFT	⊕	PLUS DRAFT	⊖	BRINELL HARDNESS
TOLERANCES NOT SPECIFIED		AUTOCAD REL2008 LT		DO NOT SCALE DRAWING FOR DIMENSIONS	
.XX ±		INCH		Sheet 1 of 2	SCALE 1:18
.XXX ±					
<<DEG>> ±					
CONFIDENTIAL DISCLOSURE		DRAWN BY		CHECKED BY	
This drawing is the property of POWEREX, INC. of the SCOTT FETZER COMPANY and subject to return on demand. Its contents are confidential and must not be copied or submitted to outside parties for use or examination.		AEK		GES	
		9/24/07		9/24/07	
MATERIAL		APPROVED BY		ENGINEERING MFG/MKTG	
N/A		DMS		DB	
		9/24/07		9/24/07	
PART NAME		DRAWN BY		APPROVED BY	
MEDICAL SCROLL		AEK		DMS	
10HP DUPLEX		9/24/07		9/24/07	
		MATERIAL		SCALE	
N/A		N/A		1:18	
DWG NO		SIZE			
MSED100		D			



REV	ZONE	REVISION	DATE	ECN	NAME	CHKD
B-1	ALL	RELEASE TO PRODUCTION	9/24/07	21668	AEK	GES
C-1	ALL	UPDATED BUILD & FLOW TO CURRENT STANDARD	6/3/08	21907	AEK	GES
C-2	ALL	CORRECTED AIR INLET ORIENTATION PLUMBING	10/23/08	21907	AEK	GES
D-1	ALL	UPDATED TO NEW POWEREX DRYER	8/19/09	22120	AEK	GES
E-1	ALL	REMOTE INLET CHANGED TO 1 INCH	02/05/10	22348	DMS	GES
F-1	1 ALL	UPDATED TO NEW ENCLOSURE DESIGN	6/18/10	22394	AEK	GES
G-1	2 ALL	UPDATED/ADDED FLEX LINES	10/23/12	PXEC0009	AEK	KMB
H-1	1 ALL 1 ALL 2 CS 1 ALL	ADDED CENTER OF GRAVITY INFORMATION UPDATED TO CURRENT MASTER CONTROL PANEL ADDED RESERVE PRESSURE SWITCH ADDED ATC SKID INLET LOCATION	9/24/13	PXEC0030	AEK	GES
J-1	ALL	ADDED TANK LINING	4/2/18	PXEC0229	GES	MAH

LEGEND	
	INTAKE FILTER
	AIR FILTER
	BALL VALVE
	CARBON FILTER
	DIVERTER VALVE
	REGULATOR
	CHECK VALVE
	SEPERATOR
	FLEX JOINT
	UNION

- NOTES:
 1.) SHEET 1, UNIT LAYOUT.
 2.) SHEET 2, UNIT FLOW SCHEMATIC.
 3.) INLET CONNECTIONS: 1" FNPT X 2.
 4.) OUTLET CONNECTION: 3/4" FNPT X 1.
 5.) POWER CONNECTION: 1- 208, 230, OR 460 VOLT

SYMBOL LEGEND ⊖ = MINUS DRAFT ⊕ = PLUS DRAFT ○ = ADDITIONAL CONTROL REQ'D ○ = BRINELL HARDNESS		Drawings to conform to the current revision of the following ANSI standards: Y14.3 Multi and sectional view dgs. Y14.5M Dimensioning and tolerancing
TOLERANCES NOT SPECIFIED .XX ± .XXX ± << DEG > ±	AUTOCAD REL2008 LT INCH	DO NOT SCALE DRAWING FOR DIMENSIONS Sheet 2 of 2 SCALE 1:18
CONFIDENTIAL DISCLOSURE This drawing is the property of POWEREX, INC. of the SCOTT FETZER COMPANY and subject to return on demand. Its contents are confidential and must not be copied or submitted to outside parties for use or examination.		
DRAWN BY AEK	CHECKED BY GES	APPROVED BY ENGINEERING MFG/MRKTG DMS DB
MATERIAL N/A		DATE 9/24/07
PART NAME ENCLOSED SCROLL FLOW SCHEMATIC		 150 PRODUCTION DRIVE, HARRISON, OHIO 45030 Ph 888-769-7979 FAX (513) 367-3125
DWG NO MSED100		SIZE D