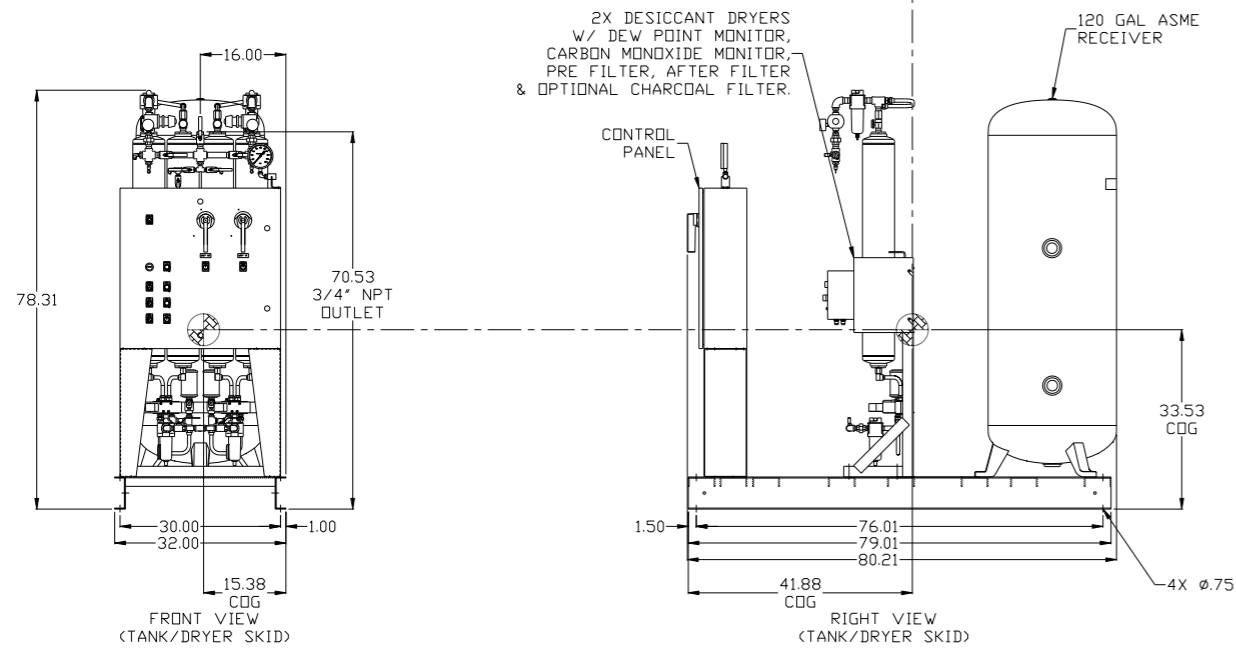


REV	ZONE	REVISION	DATE	ECN	NAME	CHKD
B-1	ALL	RELEASE TO PRODUCTION	9/28/07	21668	AEK	GES
C-1	ALL	UPDATED BUILD & FLOW TO CURRENT STANDARD	6/3/08	21907	AEK	GES
C-2	ALL	CORRECTED INLET PLUMBING & ORIENTATION	10/23/08	21907	AEK	GES
D-1	ALL	UPDATED TO NEW POWEREX DRYER	8/19/09	22120	AEK	GES
E-1	1 ALL	UPDATED TO NEW ENCLOSURE DESIGN	6/18/10	22394	AEK	GES
F-1	1 ALL	ADDED CENTER OF GRAVITY INFORMATION	11/19/12	22723	AEK	KMB
G-1	2 DB	ADDED RESERVE PRESSURE SWITCH	7/17/17	PXEC0187	AEK	GES

MINIMUM RECOMMENDED ELECTRICAL PANEL CLEARANCE PER OSHA/NEC REQUIREMENTS

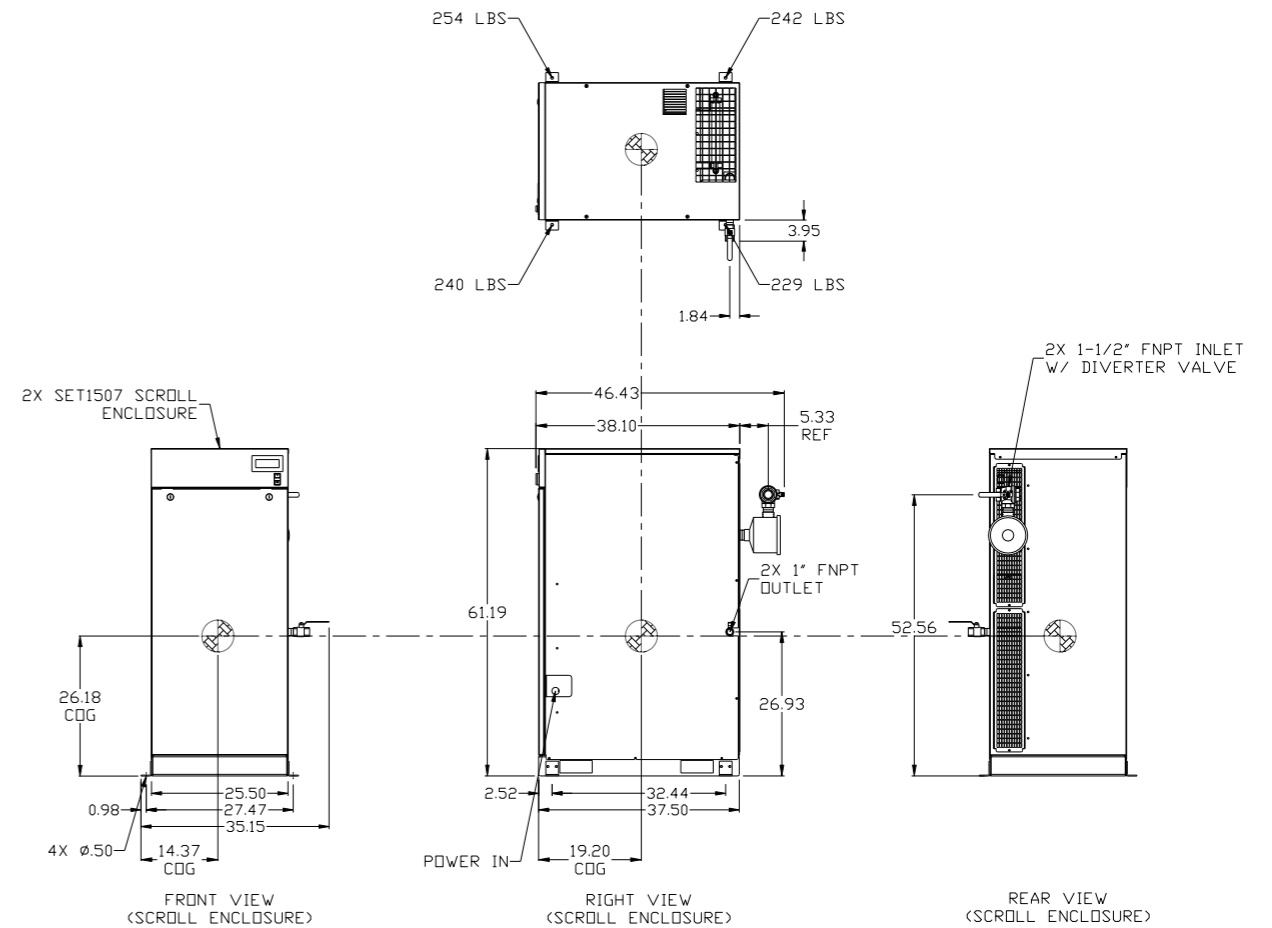
MINIMUM RECOMMENDED MAINTENANCE CLEARANCE



SET1507 SCROLL ENCLOSURE:  
TOTAL WEIGHT: 965 LBS

AIR TREATMENT SKID:  
TOTAL WEIGHT: 1170 LBS

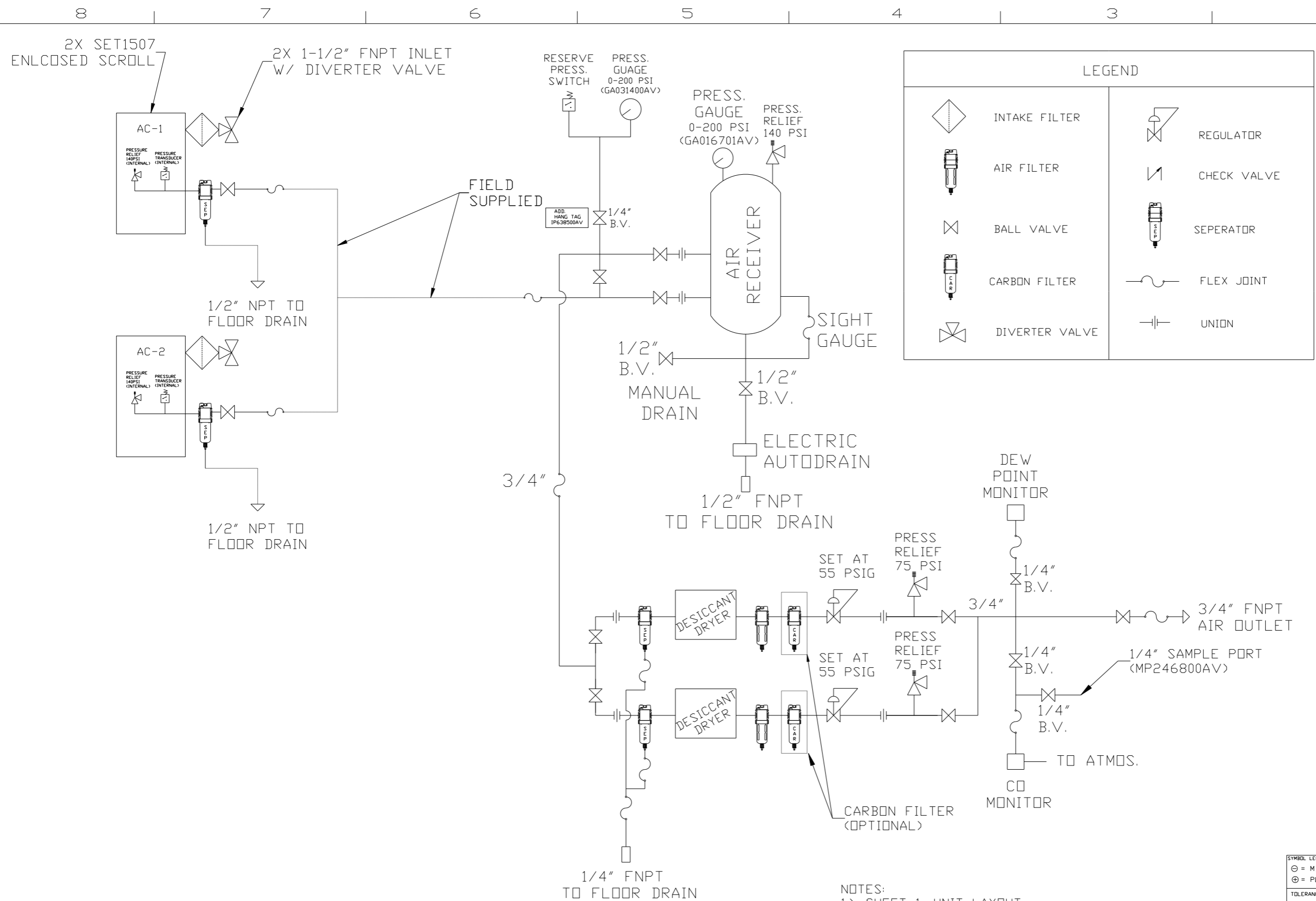
DENOTES CENTER OF GRAVITY



NOTES:

- 1) SHEET 1, UNIT LAYOUT.
- 2) SHEET 2, UNIT FLOW SCHEMATIC.
- 3) INLET CONNECTIONS: 1-1/2" FNPT X 2.
- 4) OUTLET CONNECTION: 3/4" FNPT X 1.
- 5) POWER CONNECTION: 1- 208, 230, OR 460 VOLT
- 6) WHEN PACKAGE IS INSTALLED INTO THE FACILITY, MAKE SURE THAT THE INSTALLER REFERENCES TABLE 110.26 (A) (1) FOR MINIMUM WORKING AREA.

SYMBOL LEGEND		= ADDITIONAL CONTROL REQ'D		Drawings to conform to the current revision of the following ANSI standards	
⊖	MINUS DRAFT	⊕	PLUS DRAFT	⊖	ANSI Y14.3 Multi and sectional view dgs.
⊕	PLUS DRAFT	⊖	MINUS DRAFT	⊖	ANSI Y14.5M Dimensioning and tolerancing
⊖	MINUS DRAFT	⊕	PLUS DRAFT	⊖	ANSI Y14.3 Multi and sectional view dgs.
⊕	PLUS DRAFT	⊖	MINUS DRAFT	⊖	ANSI Y14.5M Dimensioning and tolerancing
TOLERANCES NOT SPECIFIED		AUTOCAD REL2008 LT		DO NOT SCALE DRAWING FOR DIMENSIONS	
.XX ±		INCH		Sheet 1 of 2	
.XXX ±				SCALE 1:18	
<DEG> ±					
CONFIDENTIAL DISCLOSURE		DRAWN BY		CHECKED BY	
This drawing is the property of POWEREX, INC. of the SCOTT FEITZER COMPANY and subject to return on demand. Its contents are confidential and must not be copied or submitted to outside parties for use or examination.		AEK		GES	
		9/28/07		9/28/07	
		9/28/07		9/28/07	
MATERIAL		N/A		APPROVED BY	
PART NAME		MEDICAL SCROLL		ENGINEERING MFG/MKTG	
		15HP DUPLEX		DMS DB	
DWG NO		MSED150		SIZE	
				D	



REV	ZONE	REVISION	DATE	ECN	NAME	CHKD
B-1	ALL	RELEASE TO PRODUCTION	9/28/07	21668	AEK	GES
C-1	ALL	UPDATED BUILD & FLOW TO CURRENT STANDARD	6/3/08	21907	AEK	GES
C-2	ALL	CORRECTED INLET PLUMBING & ORIENTATION	10/23/08	21907	AEK	GES
D-1	ALL	UPDATED TO NEW POWEREX DRYER	8/19/09	22120	AEK	GES
E-1	1 ALL	UPDATED TO NEW ENCLOSURE DESIGN	6/18/10	22394	AEK	GES
F-1	1 ALL	ADDED CENTER OF GRAVITY INFORMATION	11/19/12	22723	AEK	KMB
G-1	2 DB	ADDED RESERVE PRESSURE SWITCH	7/17/17	PXEC0187	AEK	GES

LEGEND	
	INTAKE FILTER
	AIR FILTER
	BALL VALVE
	CARBON FILTER
	DIVERTER VALVE
	REGULATOR
	CHECK VALVE
	SEPERATOR
	FLEX JOINT
	UNION

- NOTES:
- 1.) SHEET 1, UNIT LAYOUT.
  - 2.) SHEET 2, UNIT FLOW SCHEMATIC.
  - 3.) INLET CONNECTIONS: 1-1/2" FNPT X 2.
  - 4.) OUTLET CONNECTION: 3/4" FNPT X 1.
  - 5.) POWER CONNECTION: 1- 208, 230, OR 460 VOLT

SYMBOL LEGEND		= ADDITIONAL CONTROL REQ'D		Drawings to conform to the current revision of the following ANSI standards:	
= MINUS DRAFT		= BRINELL HARDNESS		Y14.3 Multi and sectional view dgs.	
= PLUS DRAFT				Y14.5M Dimensioning and tolerancing	
TOLERANCES NOT SPECIFIED	AUTOCAD REL2008 LT	DO NOT SCALE DRAWING FOR DIMENSIONS		SCALE	
.XX ±	INCH	Sheet 2 of 2		1:18	
.XXX ±					
<<DEG> ±					
CONFIDENTIAL DISCLOSURE		DRAWN BY		CHECKED BY	
This drawing is the property of POWEREX, INC. of the SCOTT FETZER COMPANY and subject to return on demand. Its contents are confidential and must not be copied or submitted to outside parties for use or examination.		AEK		GES	
		APPROVED BY		ENGINEERING MFG/MRKTG	
		9/28/07		9/28/07 9/28/07 9/28/07	
MATERIAL		N/A		POWEREX	
PART NAME		ENCLOSED SCROLL		150 PRODUCTION DRIVE, HARRISON, OHIO 45030	
		FLOW SCHEMATIC		Ph: 888-769-7979 FAX: (513) 367-3125	
		DWG NO		MSED150	
				SIZE D	